

82°35'W 82°30'W 82°25'W 82°20'W 82°15'W 82°10'W 82°5'W 82°0'W

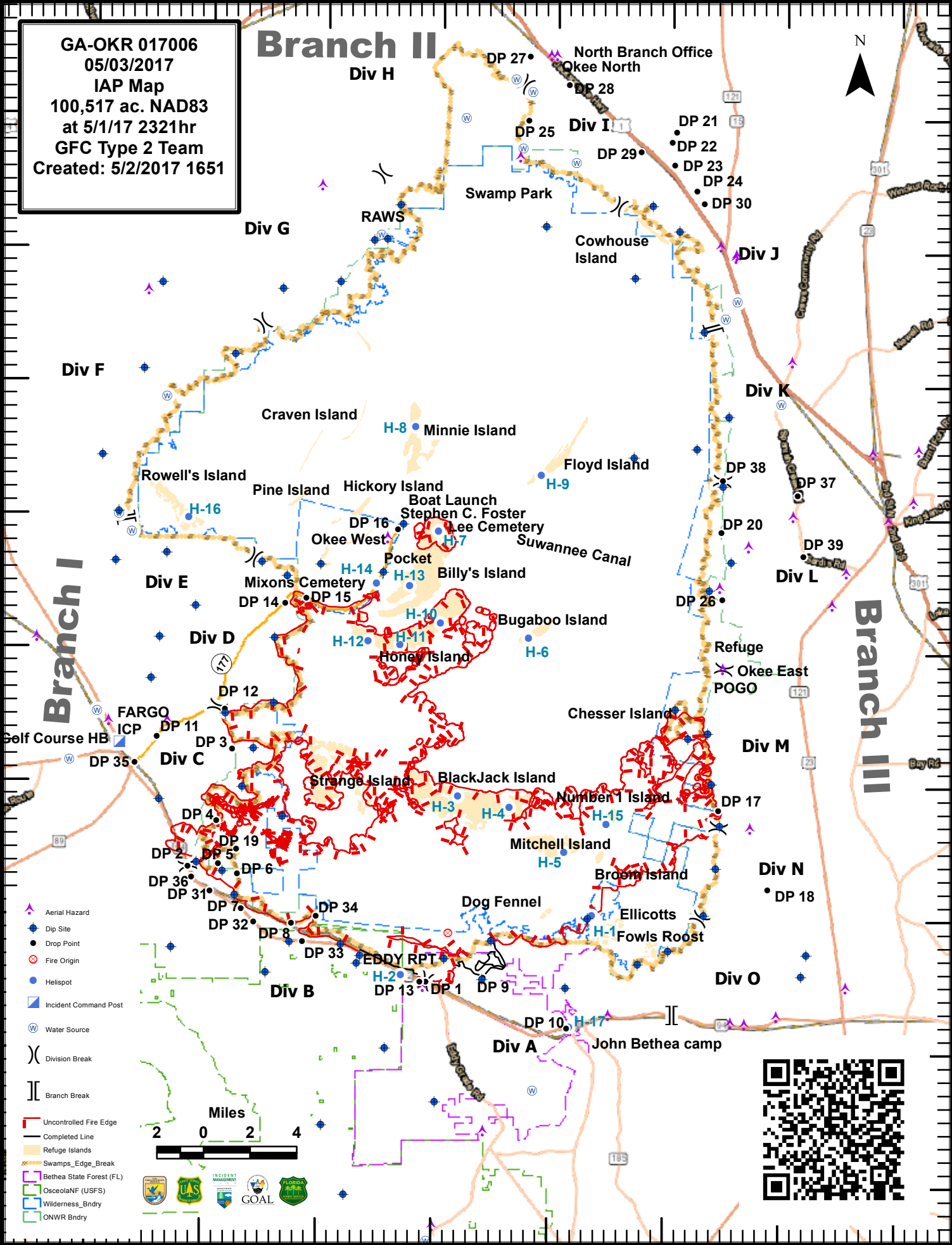
GA-OKR 017006
05/03/2017
IAP Map
100,517 ac. NAD83
at 5/1/17 2321hr
GFC Type 2 Team
Created: 5/2/2017 1651

Branch II



31°5'N
31°0'N
30°55'N
30°50'N
30°45'N
30°40'N
30°35'N
30°30'N
30°25'N

31°5'N
31°0'N
30°55'N
30°50'N
30°45'N
30°40'N
30°35'N
30°30'N
30°25'N



- Aerial Hazard
- Dip Site
- Drop Point
- Fire Origin
- Helispot
- Incident Command Post
- Water Source
- Division Break
- Branch Break
- Uncontrolled Fire Edge
- Completed Line
- Refuge Islands
- Swamps_Edge_Break
- Bethea State Forest (FL)
- OsceolaNF (USFS)
- Wilderness_Bndry
- ONWR Bndry



82°35'W 82°30'W 82°25'W 82°20'W 82°15'W 82°10'W 82°5'W 82°0'W