

**West Mims Fire**  
**GA-OKR 017006**  
**05/05/2017**  
**Air Operations**  
**111,650 Ac**  
**IR as of 05/3/2017 2254 hr**

West Mims	Incident Data Points	Label	Latitude	Longitude
DP-1	Drop Point	DP-1	30 52.62360	82 75.96800
DP-2	Drop Point	DP-2	30 52.62070	82 77.18850
DP-3	Drop Point	DP-3	30 42.26494	82 32.10800
DP-4	Drop Point	DP-4	30 42.18110	82 32.68850
DP-5	Drop Point	DP-5	30 30.96770	82 32.68850
DP-6	Drop Point	DP-6	30 30.96210	82 32.68850
DP-7	Drop Point	DP-7	30 30.96210	82 32.68850
DP-8	Drop Point	DP-8	30 34.79218	82 34.79218
DP-9	Drop Point	DP-9	30 30.96210	82 32.68850
DP-10	Drop Point	DP-10	30 50.93104	82 34.13820
DP-11	Drop Point	DP-11	30 42.69000	82 32.68850
DP-12	Drop Point	DP-12	30 42.70000	82 32.68850
DP-13	Drop Point	DP-13	30 32.53500	82 32.73200
DP-14	Drop Point	DP-14	30 42.70000	82 32.68850
DP-15	Drop Point	DP-15	30 46.93206	82 32.68850
DP-16	Drop Point	DP-16	30 46.93206	82 32.68850
DP-17	Drop Point	DP-17	30 46.93206	82 32.68850
DP-18	Drop Point	DP-18	30 51.78133	82 32.68850
DP-19	Drop Point	DP-19	30 30.96210	82 32.68850
DP-20	Drop Point	DP-20	30 45.53642	82 30.94845
DP-21	Drop Point	DP-21	31 4.93774	82 30.94845
DP-22	Drop Point	DP-22	31 4.93774	82 30.94845
DP-23	Drop Point	DP-23	31 5.29816	82 30.94845
DP-24	Drop Point	DP-24	31 5.29816	82 30.94845
DP-25	Drop Point	DP-25	31 4.93774	82 30.94845
DP-26	Drop Point	DP-26	30 47.02700	82 32.68850
DP-27	Drop Point	DP-27	31 4.93774	82 30.94845
DP-28	Drop Point	DP-28	31 4.93774	82 30.94845
DP-29	Drop Point	DP-29	31 4.93774	82 30.94845
DP-30	Drop Point	DP-30	31 1.86238	82 30.94845
DP-31	Drop Point	DP-31	30 50.96802	82 32.68850
DP-32	Drop Point	DP-32	30 50.96802	82 32.68850
DP-33	Drop Point	DP-33	30 50.96802	82 32.68850
DP-34	Drop Point	DP-34	30 50.96802	82 32.68850
DP-35	Drop Point	DP-35	30 40.70253	82 30.94845
DP-36	Drop Point	DP-36	30 50.96802	82 32.68850
DP-37	Drop Point	DP-37	30 50.96802	82 32.68850
DP-38	Drop Point	DP-38	30 50.96802	82 32.68850
DP-39	Drop Point	DP-39	30 44.24802	82 32.70661
DP-40	Drop Point	DP-40	30 44.24802	82 32.70661
H-1	Helispot	H-1	30 41.20000	82 72.39842
H-2	Helispot	H-2	30 41.20000	82 72.39842
H-3	Helispot	H-3	30 52.80007	82 47.26803
H-4	Helispot	H-4	30 42.70000	82 32.68850
H-5	Helispot	H-5	30 39.19794	82 32.68850
H-6	Helispot	H-6	30 47.49034	82 30.94845
H-7	Helispot	H-7	30 49.49236	82 4.60862
H-8	Helispot	H-8	30 49.49236	82 4.60862
H-9	Helispot	H-9	30 51.62211	82 2.47796
H-10	Helispot	H-10	30 46.04284	82 2.12445
H-11	Helispot	H-11	30 42.70000	82 32.68850
H-12	Helispot	H-12	30 45.34815	82 37.40808
H-13	Helispot	H-13	30 35.36015	82 32.68850
H-14	Helispot	H-14	30 47.50796	82 33.85650
H-15	Helispot	H-15	30 39.57106	82 37.74547
H-16	Helispot	H-16	30 46.96703	82 38.74843
H-17	Helispot	H-17	30 50.96217	82 40.35791
R-1	Repeater	R-1	30 46.96703	82 38.74843
EDV 417	Repeater	EDV 417	30 52.53000	82 34.51287
Clear East	Repeater	Clear East	30 44.24802	82 31.52525
Clear North	Repeater	Clear North	31 2.70779	82 4.82029
NFC-2	Repeater	NFC-2	30 58.80073	82 23.81533

**Legend**

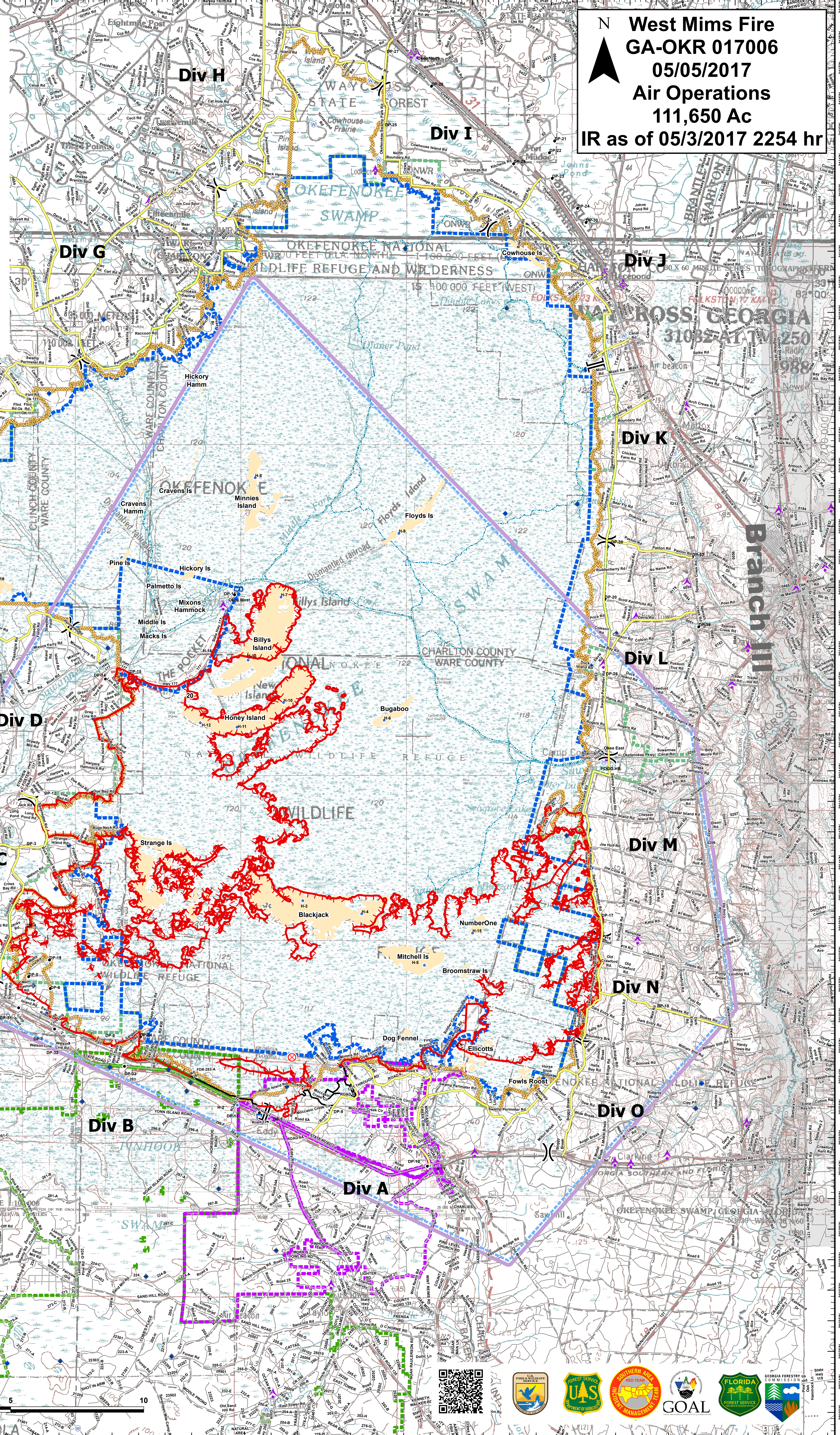
- Uncontoured Fire Edge
- Completed Line
- Aerial Hazard
- Dip Site
- Drop Point
- ⊗ Fire Origin
- Helibase
- Hot Spot
- ⊗ Incident Command Post
- ⊗ Mobile Weather Unit
- ⊗ Pump
- ⊗ Repeater
- ⊗ Water Source
- ⊗ Division Break
- ⊗ Branch Break
- Minor Roads
- Swamps\_Edge\_Break
- canoe\_tails
- Betha State Forest (FL)
- Okefenokee (USFS)
- Wilderness\_Bridy
- ONWR

Created: 5/5/2017 7:12  
 SA Red Team GIS  
 Datum: NAD83

**Scale**

0 5 10 Miles

**Logos**



**Logos and QR Code**