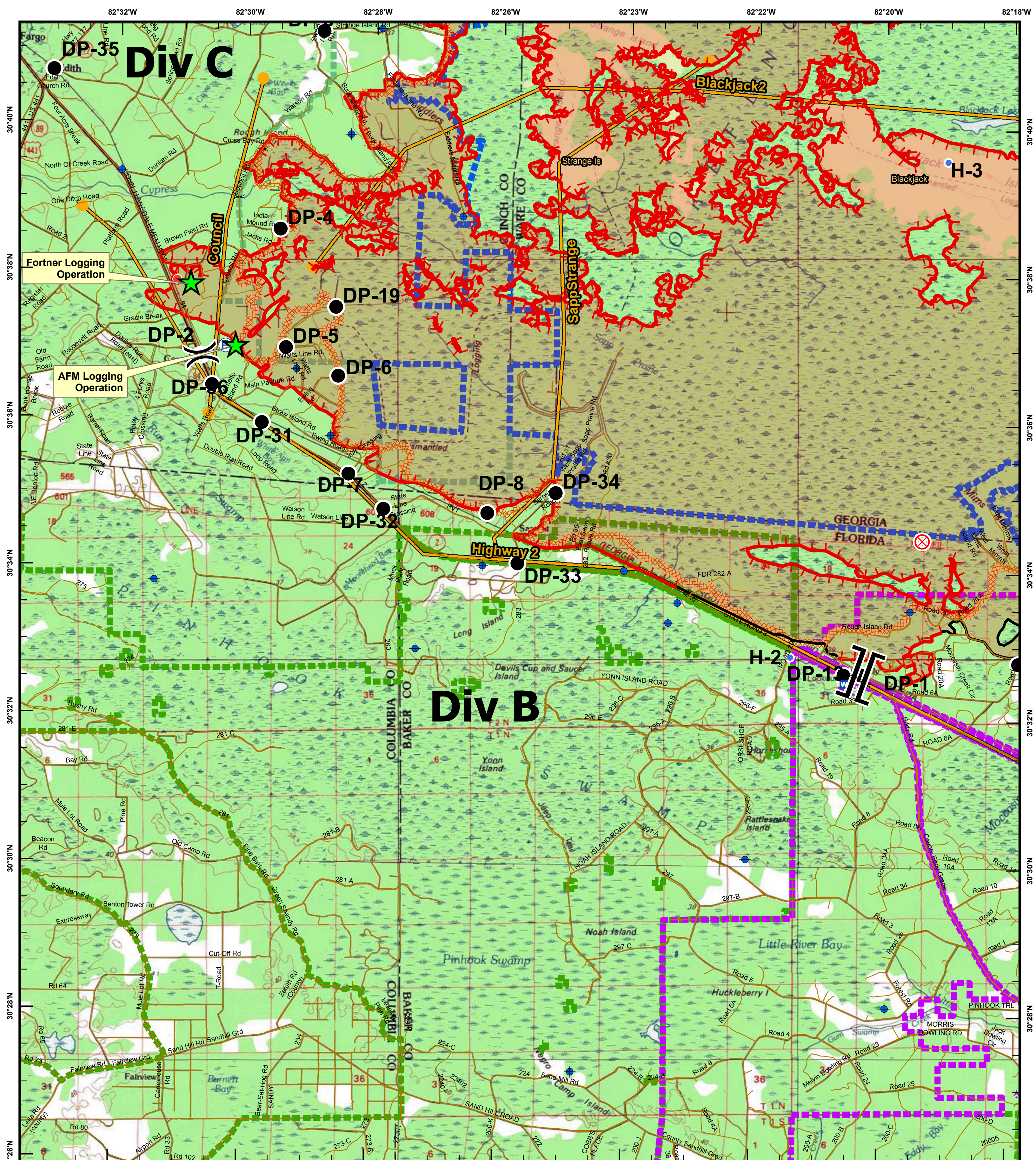


<ul style="list-style-type: none"> Aerial Hazard Dip Site Drop Point Fire Origin Helispot Mobile Weather Unit Repeater Water Source 	<ul style="list-style-type: none"> Division Break Branch Break Completed Line Bridges canoe_trails Management Action Point Heat Perimeter Refuge Islands Swamps_Edge_Break Other Roads 	<ul style="list-style-type: none"> Bethesda State Forest (FL) OsceolaNF (USFS) Wilderness_Bndry ONWR Bndry 	<div style="text-align: center;"> </div>		<div style="border: 1px solid black; padding: 5px;"> <p style="text-align: center;">West Mims Fire GA-OKR 017006 05/05/2017 Div A Operations Map</p> <p style="text-align: center;">IR as of 05/3/2017 2254 Hrs 111,650 ac.</p> </div>
---	--	--	--	--	--



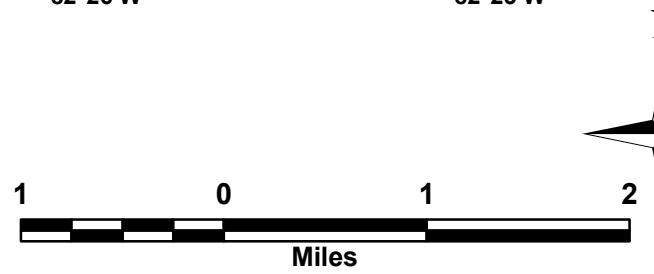


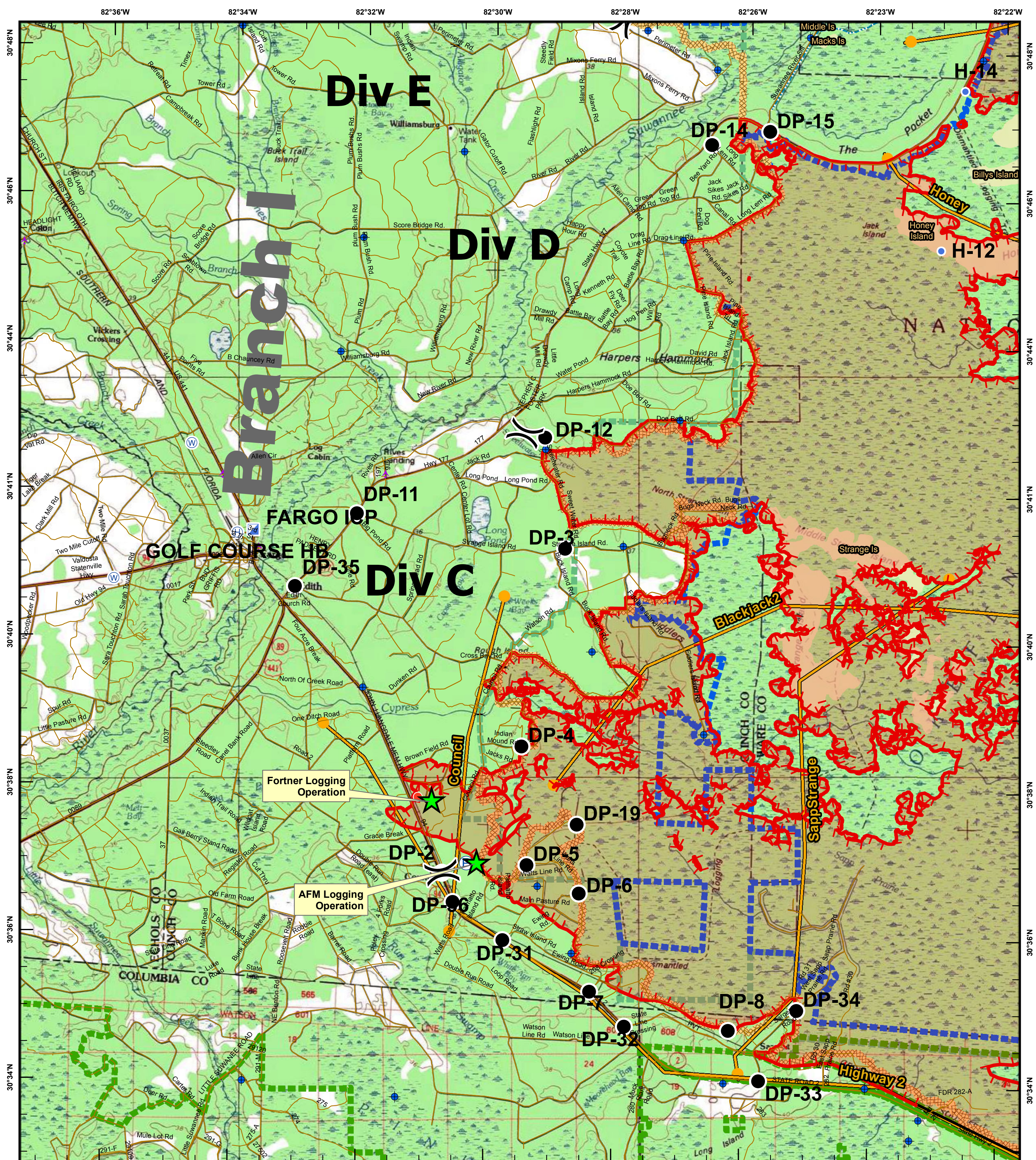
West Mims Fire
GA-OKR 017006
05/05/2017
Div B Operations Map
 IR as of 05/3/2017 2254 Hrs
 111,650 ac.

- Aerial Hazard
- Dip Site
- Drop Point
- Fire Origin
- Helispot
- Hot Spot
- Mobile Weather Unit
- Pump
- Repeater

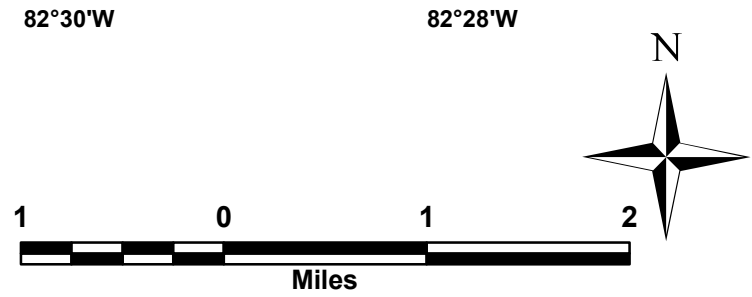
- Division Break
- Completed Line
- Bridges
- Management Action Point
- Heat Perimeter
- Refuge Islands
- Branch Break
- Swamps_Edge_Break

- Bethesda State Forest (FL)
- OsceolaNF (USFS)
- Wilderness_Bndry
- ONWR Bndry



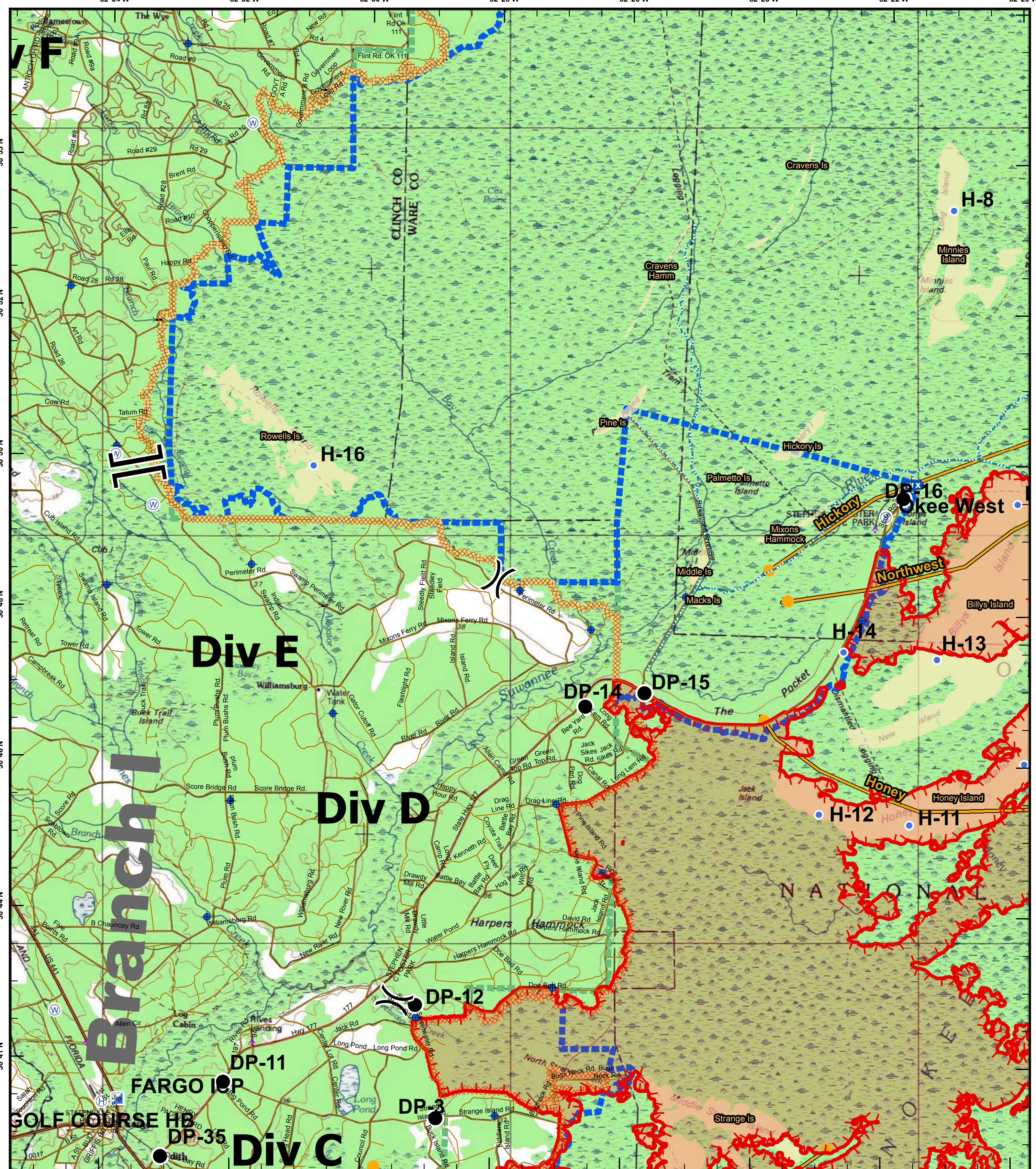


- Aerial Hazard
- Pump
- Uncontrolled Fire Edge
- Repeater
- Completed Line
- Drop Point
- Water Source
- Bridges
- Helibase
- Helispot
- Hot Spot
- Incident Command Post
- Division Break
- Management Action Point
- Heat Perimeter
- Refuge Islands
- Swamps_Edge_Break
- Other Roads
- OsceolaNF (USFS)
- Wilderness_Bndry
- ONWR Bndry

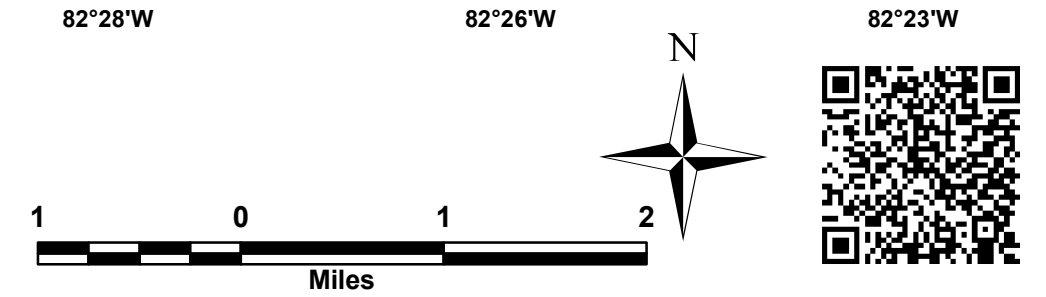


West Mims Fire
GA-OKR 017006
05/05/2017
Div C Operations Map
 IR as of 05/3/2017 2254 Hrs
 111,650 ac.



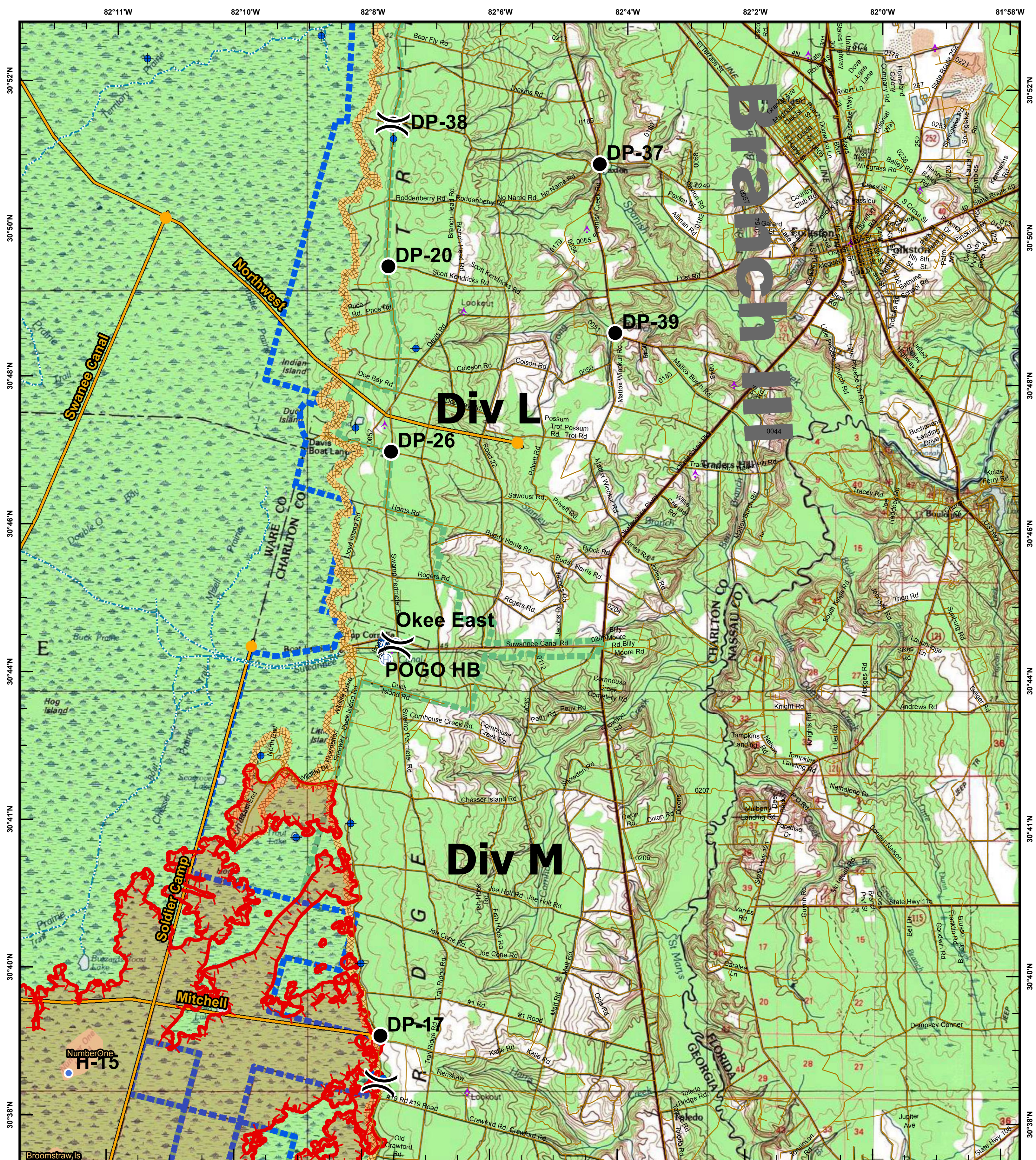


- Aerial Hazard
- Dip Site
- Drop Point
- Helibase
- Helispot
- Incident Command Post
- Mobile Weather Unit
- Repeater
- Water Source
- Division Break
- Branch Break
- Swamps_Edge_Break
- Wilderness_Bndry
- ONWR_Bndry
- Other Roads
- Uncontrolled Fire Edge
- Bridges
- canoe_trails
- Management Action Point
- Heat Perimeter
- Refuge Islands
- Swamps_Edge_Break
- Wilderness_Bndry
- ONWR_Bndry



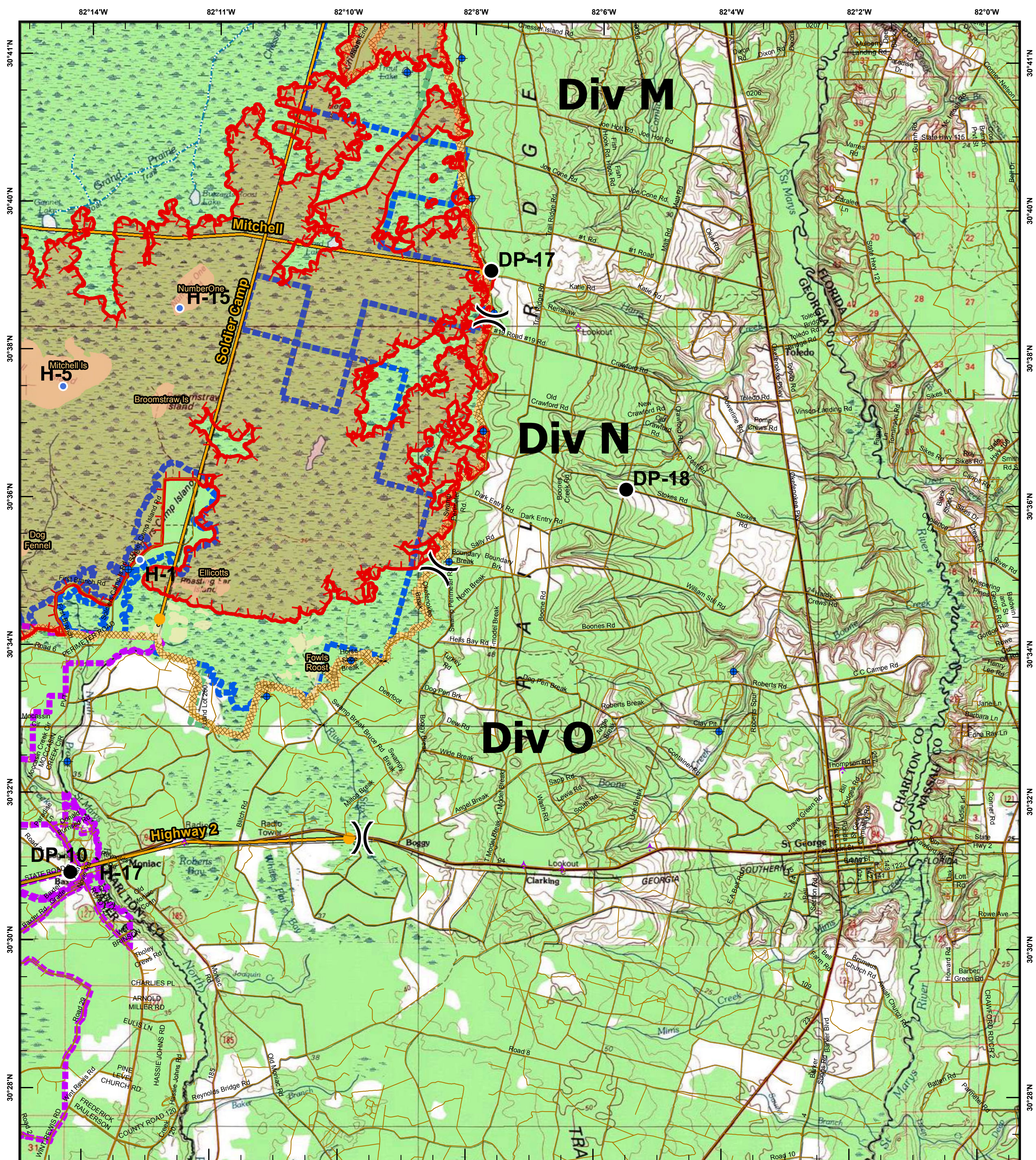
West Mims Fire
GA-OKR 017006
05/05/2017
Div D Operations Map
 IR as of 05/3/2017 2254 Hrs
 111,650 ac.





West Mims Fire
GA-OKR 017006
05/05/2017
Div M Operations Map

IR as of 05/3/2017 2254 Hrs
 111,650 ac.



<ul style="list-style-type: none"> Aerial Hazard Dip Site Drop Point Helispot 	<ul style="list-style-type: none"> Division Break Bridges Management Action Point Heat Perimeter Refuge Islands Swamps_Edge_Break 	<ul style="list-style-type: none"> Uncontrolled Fire Edge canoe_trails Heat Perimeter Refuge Islands Swamps_Edge_Break 	<ul style="list-style-type: none"> Betha State Forest (FL) Wilderness_Bndry ONWR Bndry
---	---	--	--

1 0 1 2

Miles

West Mims Fire
GA-OKR 017006
05/05/2017
Div N/O Operations Map

IR as of 05/3/2017 2254 Hrs
 111,650 ac.