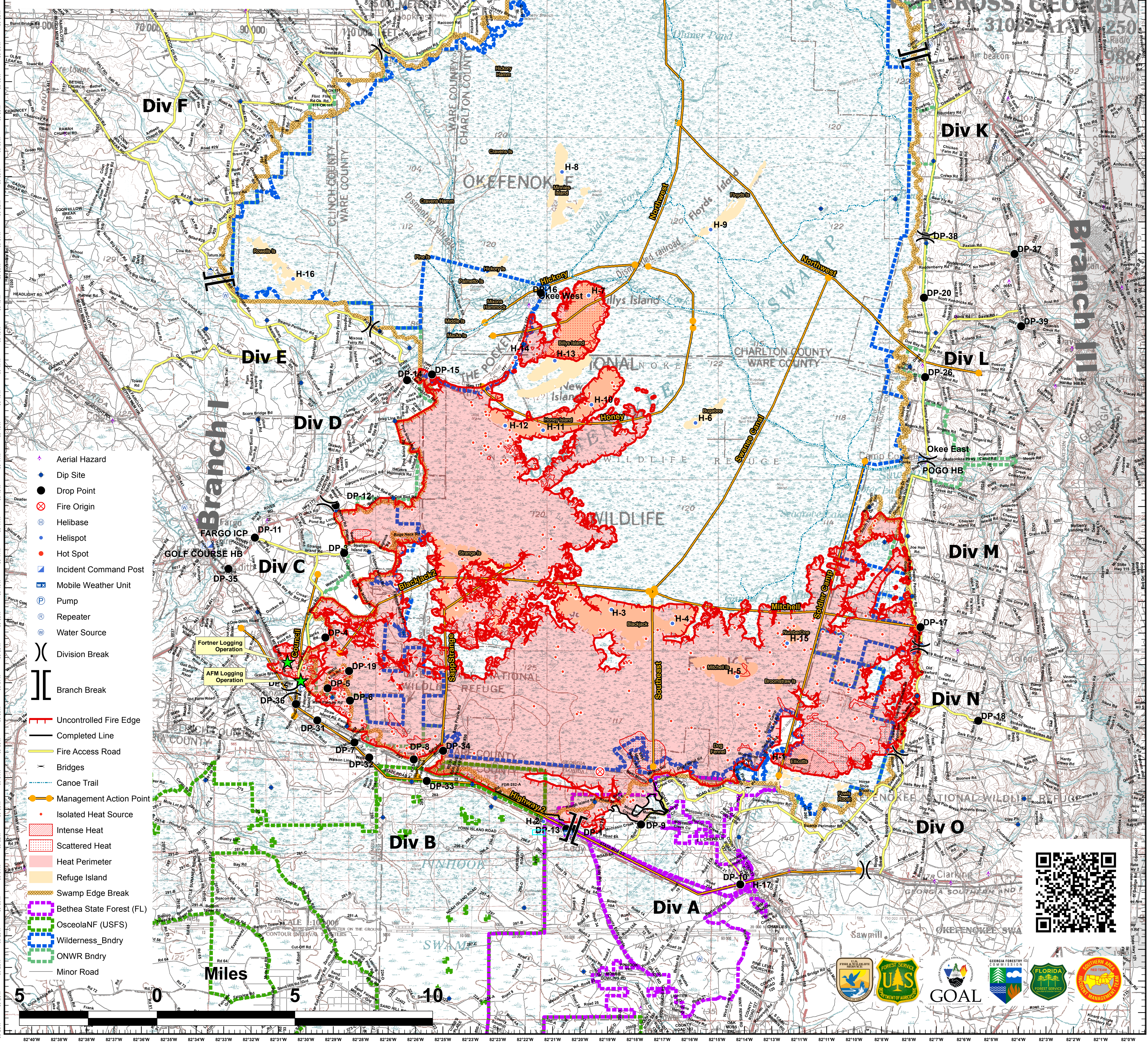


# West Mims Fire GA-OKR 017006 05/05/2017 Operations Map

IR as of  
5/3/2017 2254 Hrs  
111,650 ac.

West Mims	Incident Data Points	Label	Latitude West	Longitude North
DP-1	Drop Point	DP-1	30 35.621600	82 17.548000
DP-2	Drop Point	DP-2	30 36.85073	82 17.58322
DP-3	Drop Point	DP-3	30 41.25494	82 32.10600
DP-4	Drop Point	DP-4	30 38.57932	82 29.17200
DP-5	Drop Point	DP-5	30 38.98978	82 31.68833
DP-6	Drop Point	DP-6	30 36.59233	82 5.58167
DP-7	Drop Point	DP-7	30 35.26622	82 15.10416
DP-8	Drop Point	DP-8	30 34.79518	82 25.59737
DP-9	Drop Point	DP-9	30 33.78655	82 27.92889
DP-10	Drop Point	DP-10	30 30.92574	82 14.21382
DP-11	Drop Point	DP-11	30 41.69900	82 5.15418
DP-12	Drop Point	DP-12	30 42.79500	82 22.18801
DP-13	Drop Point	DP-13	30 38.59600	82 7.72600
DP-14	Drop Point	DP-14	30 46.74234	82 26.60088
DP-15	Drop Point	DP-15	30 46.93236	82 25.68432
DP-16	Drop Point	DP-16	30 46.93236	82 25.68432
DP-17	Drop Point	DP-17	30 38.20854	82 7.72600
DP-18	Drop Point	DP-18	30 38.17833	82 7.60615
DP-19	Drop Point	DP-19	30 37.52281	82 20.47050
DP-20	Drop Point	DP-20	30 49.53562	82 19.94815
DP-21	Drop Point	DP-21	31 4.57174	82 24.85484
DP-22	Drop Point	DP-22	31 4.13184	82 31.68833
DP-23	Drop Point	DP-23	31 3.29316	82 38.04565
DP-24	Drop Point	DP-24	31 2.32039	82 34.27047
DP-25	Drop Point	DP-25	31 4.91493	82 7.15982
DP-26	Drop Point	DP-26	30 41.02704	82 7.15982
DP-27	Drop Point	DP-27	31 7.31548	82 5.15871
DP-28	Drop Point	DP-28	31 6.26388	82 39.81175
DP-29	Drop Point	DP-29	31 3.75533	82 39.27316
DP-30	Drop Point	DP-30	30 48.84030	82 7.52316
DP-31	Drop Point	DP-31	30 35.94852	82 33.63322
DP-32	Drop Point	DP-32	30 34.79715	82 34.21358
DP-33	Drop Point	DP-33	30 34.08115	82 25.20924
DP-34	Drop Point	DP-34	31 1.82021	82 31.68833
DP-35	Drop Point	DP-35	30 40.70233	82 15.30961
DP-37	Drop Point	DP-37	30 50.04824	82 15.06342
DP-38	Drop Point	DP-38	30 51.46919	82 7.86281
DP-39	Drop Point	DP-39	30 49.84030	82 31.68833
DP-36	Drop Point	DP-36	30 36.46194	82 30.53136
Pogo HB	Helibase	Pogo HB	30 44.21802	82 32.70661
Golf Course	Golf Course	Golf Course	30 41.42000	82 7.15982
H-1	Helispot	H-1	30 39.16033	82 7.19264
H-2	Helispot	H-2	30 33.85007	82 31.68833
H-3	Helispot	H-3	30 39.57093	82 1.16282
H-4	Helispot	H-4	30 39.35758	82 39.37394
H-5	Helispot	H-5	30 37.49934	82 39.38713
H-6	Helispot	H-6	30 45.50424	82 31.68833
H-7	Helispot	H-7	30 49.49226	82 4.60862
H-8	Helispot	H-8	30 53.38788	82 2.27744
H-9	Helispot	H-9	30 51.62212	82 2.87396
H-10	Helispot	H-10	30 48.04845	82 13.56822
H-11	Helispot	H-11	30 45.21770	82 12.43378
H-12	Helispot	H-12	30 45.34615	82 17.80308
H-13	Helispot	H-13	30 47.41952	82 29.97332
H-14	Helispot	H-14	30 42.60784	82 31.68833
H-15	Helispot	H-15	30 38.57104	82 37.75457
H-16	Helispot	H-16	30 49.89720	82 39.97443
H-Betha	Helispot	H-17	30 30.95627	82 40.35973
Okeke West	Repeater	Okeke West	30 33.55000	82 14.51287
EDDY RPT	Repeater	EDDY RPT	30 32.55000	82 14.51287
Okeke East	Repeater	Okeke East	30 44.42533	82 11.35735
Okeke North	Repeater	Okeke North	31 7.10379	82 8.57809
NFC-2	Repeater	NFC-2	30 36.85073	82 25.81333



- Aerial Hazard
- Dip Site
- Drop Point
- Fire Origin
- Helibase
- Helispot
- Hot Spot
- Incident Command Post
- Mobile Weather Unit
- Pump
- Repeater
- Water Source
- Division Break
- Branch Break
- Uncontrolled Fire Edge
- Completed Line
- Fire Access Road
- Bridges
- Canoe Trail
- Management Action Point
- Isolated Heat Source
- Intense Heat
- Scattered Heat
- Heat Perimeter
- Refuge Island
- Swamp Edge Break
- Bethea State Forest (FL)
- OsceolaNF (USFS)
- Wilderness\_Bndry
- ONWR Bndry
- Minor Road

