

82°34'W 82°32'W 82°30'W 82°28'W 82°26'W 82°23'W 82°22'W 82°20'W

(H) Helibase
 (●) Helispot
 (●) Hot Spot
 (□) Incident Command Post
 (WX) Mobile Weather Unit
 (P) Pump
 (—) Uncontrolled Fire Edge
 (—) Completed Line

(—) Division Break
 (—) Branch Break

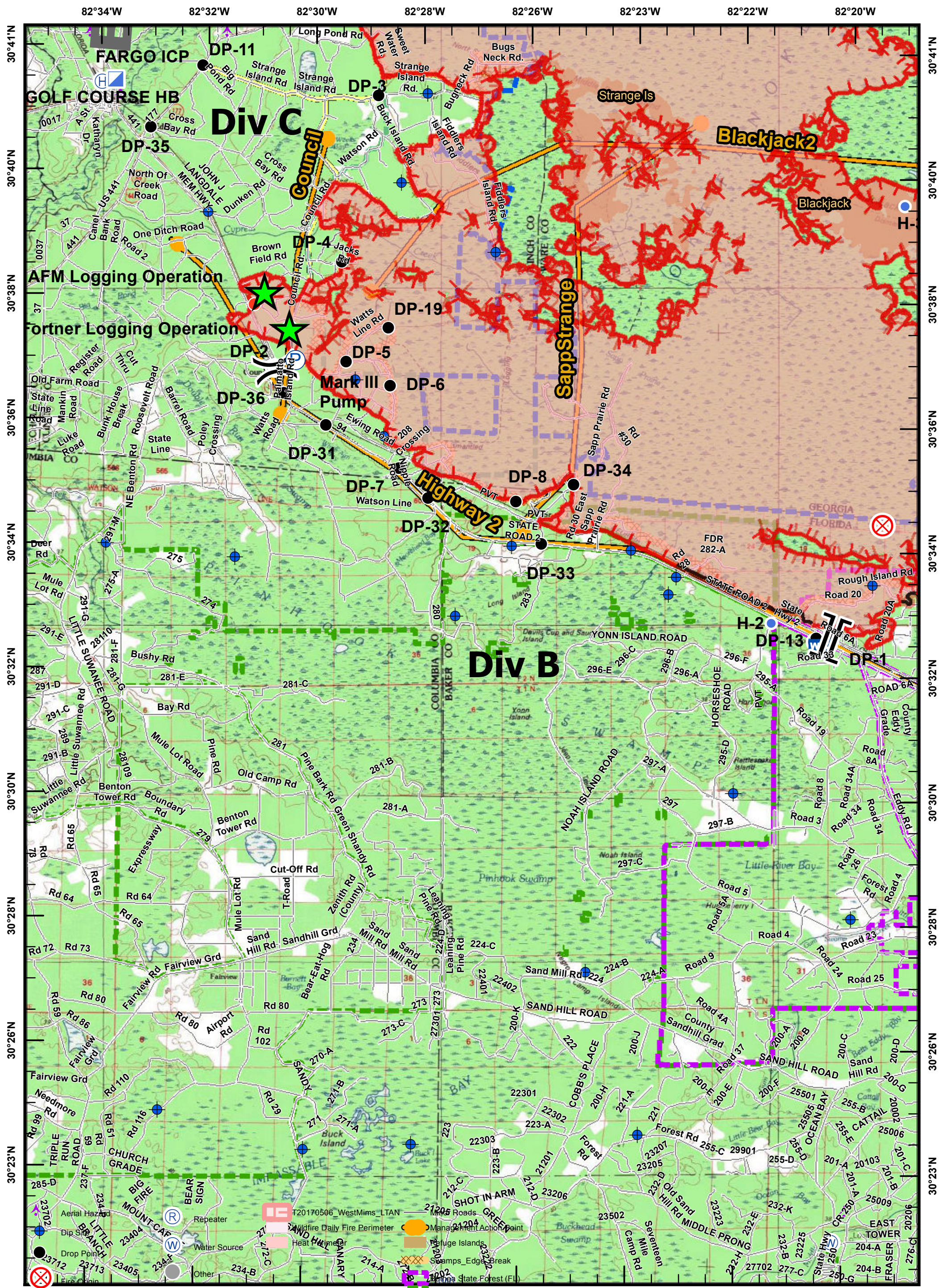
T20170506_WestMims_LTAN
 Wildfire Daily Fire Perimeter
 Heat Perimeter
 Management Action Point
 Refuge Islands
 Swamps Edge Break

Watson Line
 Minor Road
 Trails
 TShelters
 Wetlands
 Wilderness Bndry
 FDR 282-A

Created: 5/6/2017 1803hrs
 SA Red Team GIS

U.S. Forest Service
 GOAL
 Florida Department of Agriculture and Forestry

0 1 2
 West Mims Fire
 GA-OKR-017006
 05/06/2017
 Night Shift
 Page 1 IAP MapBook
 Estimated 5/6/2017 1650 Hrs
 135,391 ac.



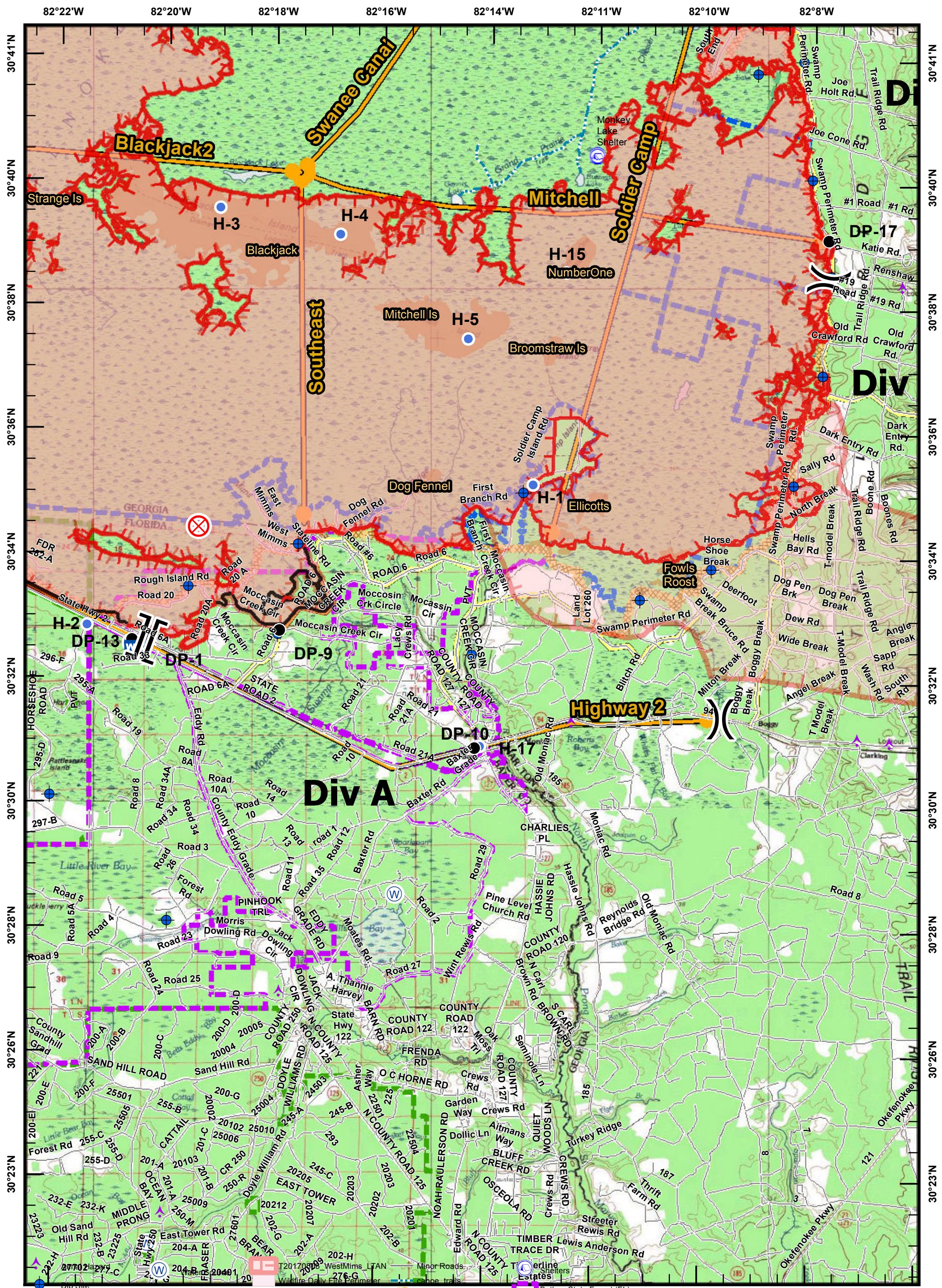
- 82°34'W
 - 82°32'W
 - 82°30'W
 - 82°28'W
 - 82°26'W
 - 82°23'W
 - 82°22'W
 - 82°20'W
- 30°41'N
 - 30°40'N
 - 30°38'N
 - 30°36'N
 - 30°34'N
 - 30°32'N
 - 30°30'N
 - 30°28'N
 - 30°26'N
 - 30°23'N
- Helibase
 - Helispot
 - Hot Spot
 - Incident Command Post
 - Mobile Weather Unit
 - Pump
 - Uncontrolled Fire Edge
 - Completed Line
- Division Break
 - Branch Break
 - Osceola NF (USFS)
 - Wilderness_Bndry
 - ONWR Bndry
 - Fire Access Road
 - Management Action Point
 - Fuge Islands
 - Swamps_Edge
 - Florida State Forest (FL)

Created: 5/6/2017 1803hrs
SA Red Team GIS

0 1 2

West Mims Fire
GA-OKR-017006
05/06/2017
Night Shift

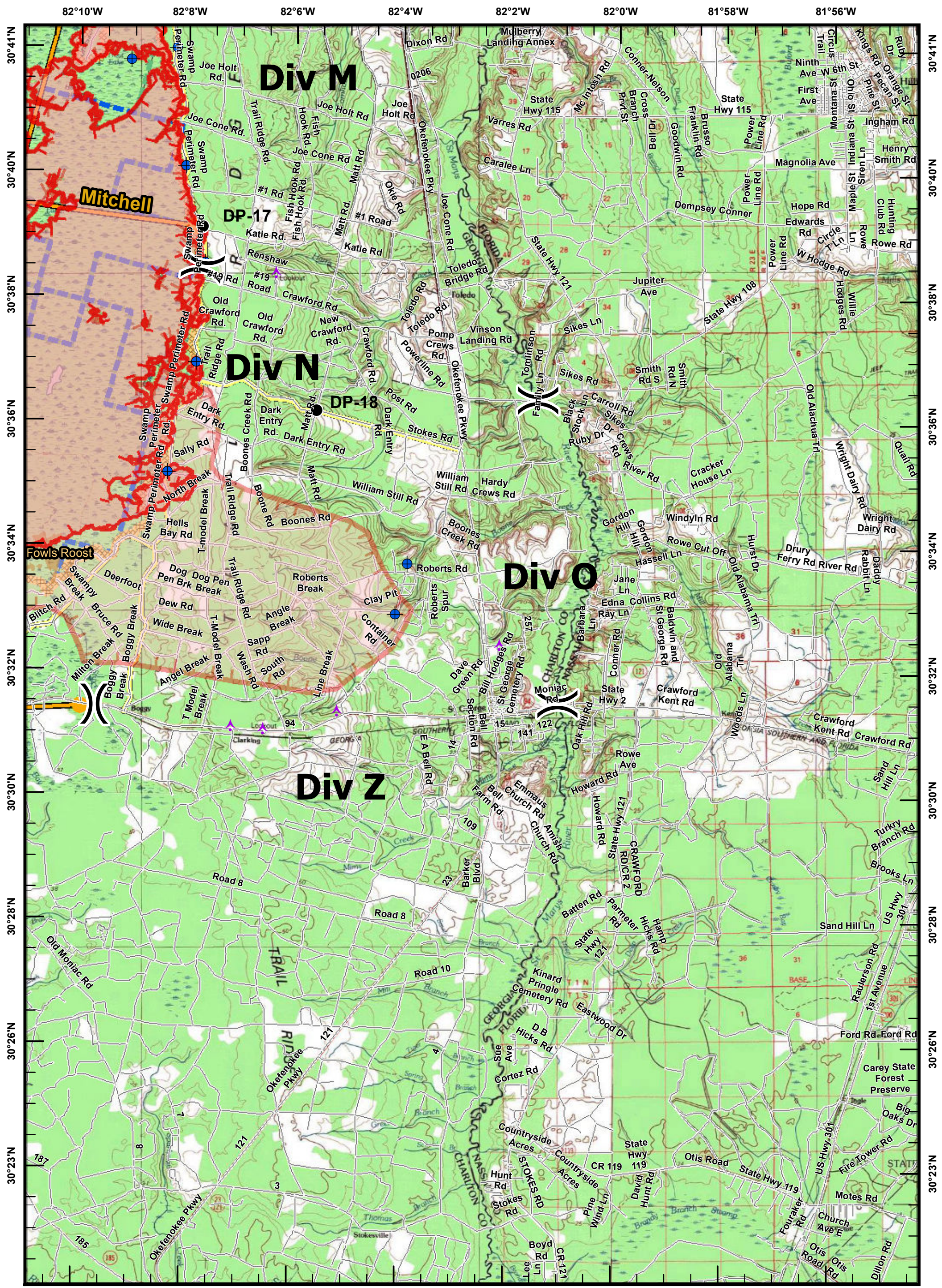
Page 2 IAP MapBook
Estimated 5/6/2017 1650 Hrs
135,391 ac.



- Drop Point
- Fire Origin
- Helispot
- Mobile Weather Unit
- Repeater
- Uncontrolled Fire Edge
- Completed Line

- Weat Perimeter
- Management Point
- Refuge Islands
- Swamps_Edge_Break
- Bethea State Forest (FL)
- Osceola NF (USFS)
- Wilderness Bndry
- ONWR Bndry
- Fire Access Road

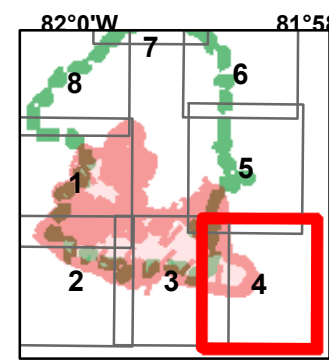
West Mims Fire
GA-OKR-017006
05/06/2017
Night Shift
 Page 3 IAP MapBook
 Estimated 5/6/2017 1650 Hrs
 135,391 ac.



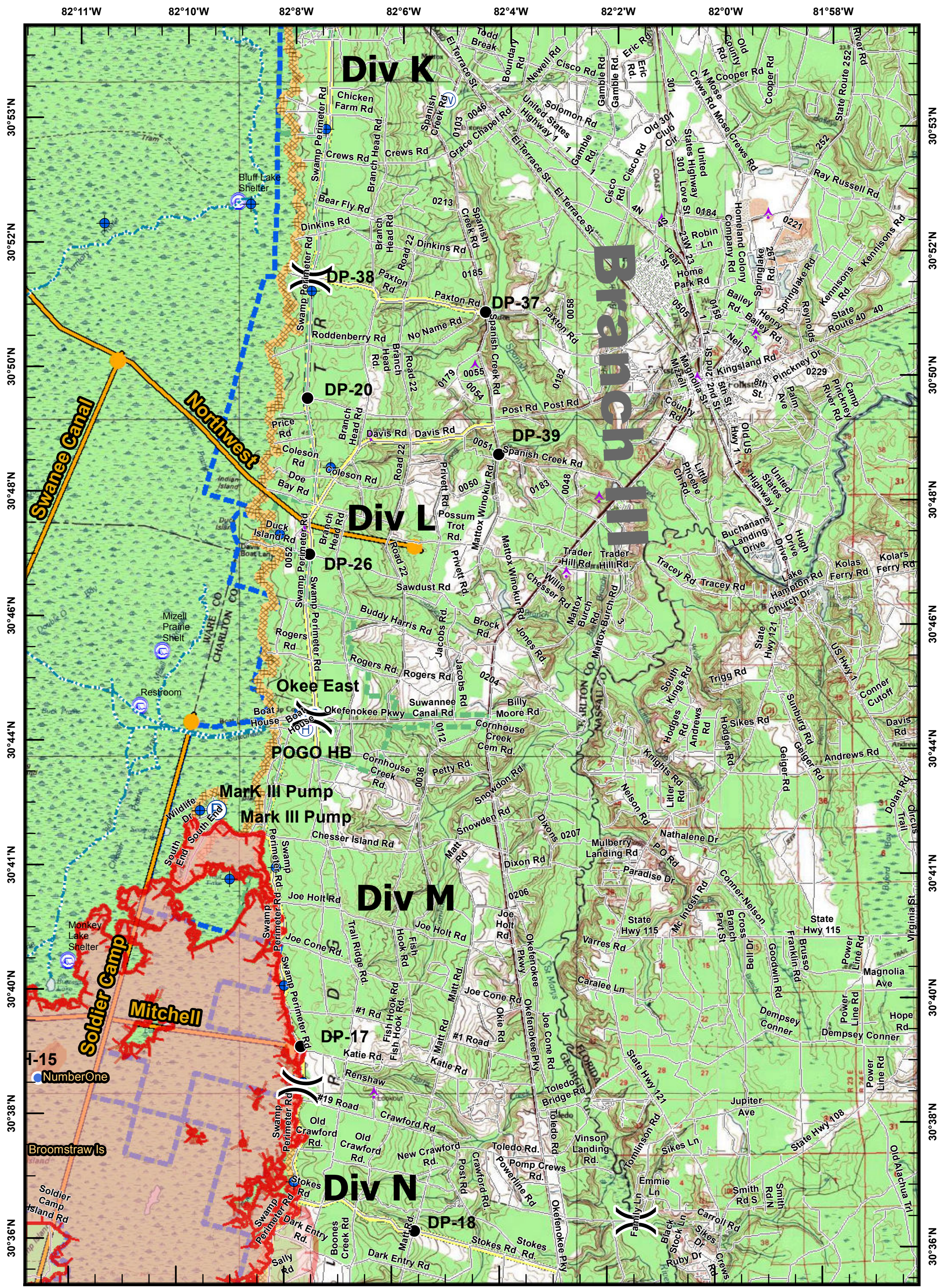
- Aerial Hazard
- Dip Site
- Drop Point
- Uncontrolled Fire Edge
- Division Break
- T20170506_WestMims_LTAN
- Wildfire Daily Fire Perimeter
- Heat Perimeter
- Minor Roads
- Management Action Point
- Refuge Islands
- Swamps_Edge_Break
- Wilderness Bndry
- Fire Access Road

- T20170506_WestMims_LTAN
- Wildfire Daily Fire Perimeter
- Heat Perimeter
- Minor Roads
- Management Action Point
- Refuge Islands
- Swamps_Edge_Break
- Wilderness Bndry
- Fire Access Road

Created: 5/6/2017 1804hrs
 SA Red Team GIS

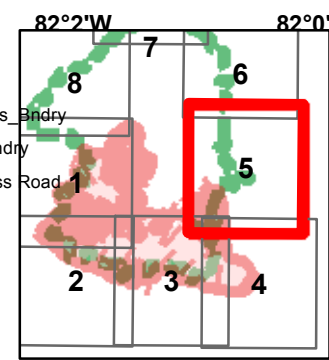


West Mims Fire
 GA-OKR-017006
 05/06/2017
 Night Shift
 Page 4 IAP MapBook
 Estimated 5/6/2017 1650 Hrs
 135,391 ac.



- Aerial Hazard
- Dip Site
- Drop Point
- Helibase
- Helispot
- Mobile Weather Unit
- Pump
- Repeater
- Water Source
- Division Break
- Uncontrolled Fire Edge

- T20170506_WestMims_LTAN
- Wildfire Daily Fire Perimeter
- Heat Perimeter
- Minor Roads
- canoe_trails
- Management Action Point
- Refuge Islands
- Swamps_Edge_Break
- Shelters
- Wilderness Bndry
- ONWR Bndry
- Fire Access Road



West Mims Fire
GA-OKR-017006
05/06/2017
Night Shift
 Page 5 IAP MapBook
 Estimated 5/6/2017 1650 Hrs
 135,391 ac.