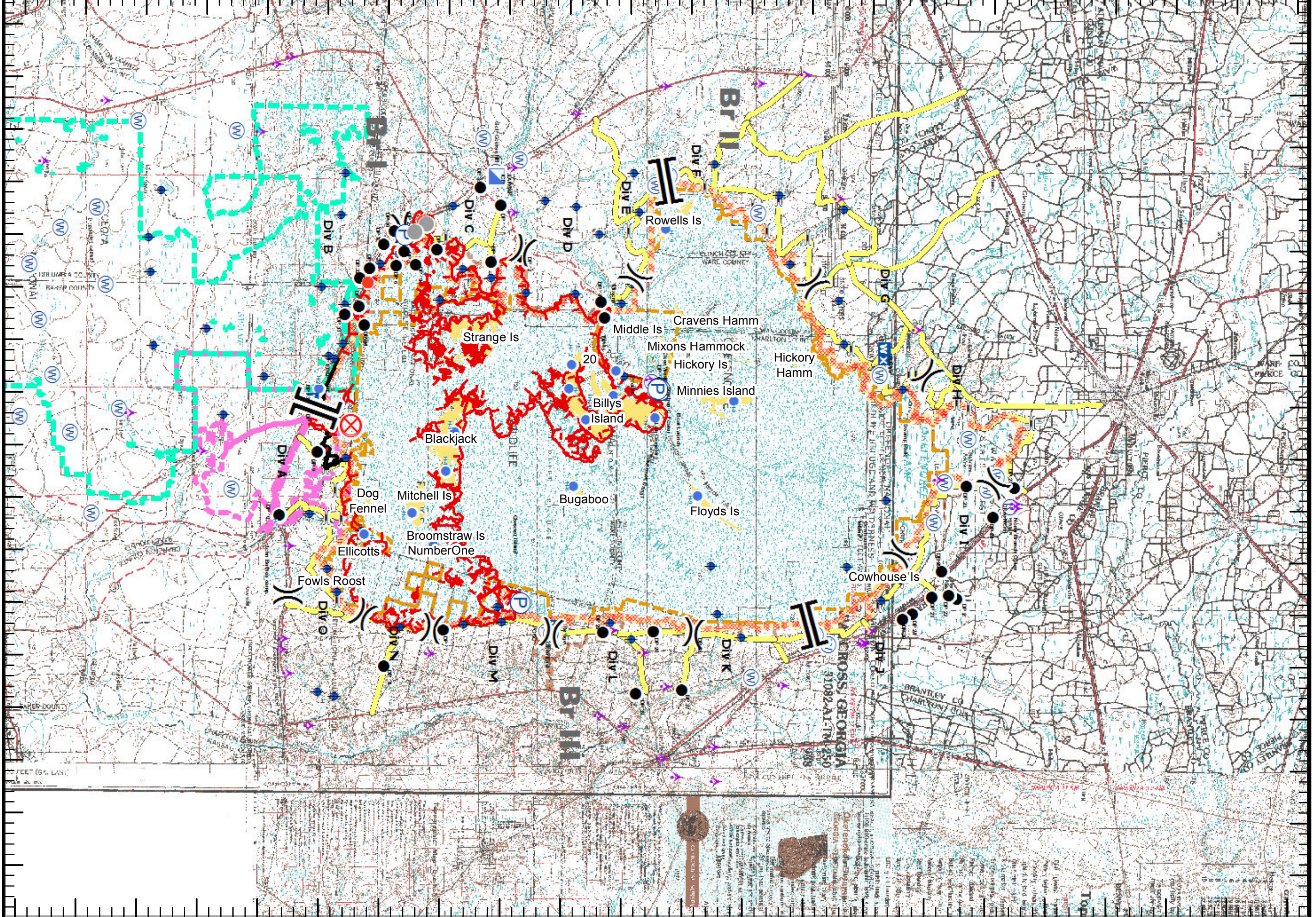
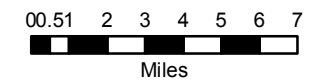


30°18'N 30°21'N 30°24'N 30°27'N 30°30'N 30°33'N 30°36'N 30°39'N 30°42'N 30°45'N 30°48'N 30°51'N 30°54'N 30°57'N 31°0'N 31°3'N 31°6'N 31°9'N 31°12'N 31°15'N 31°18'N 31°21'N

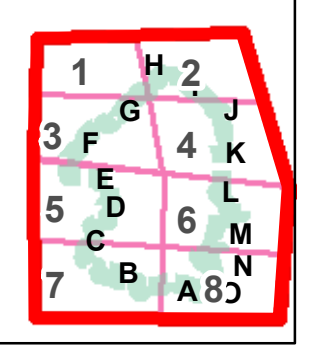
West Mims Fire
GA-OKR 017006
05/06/2017
116,571 ac.NAD1983
@ 5/5/2017 1530 hr



- Aerial Hazard
- Dip Site
- Drop Point
- Fire Origin
- Helibase
- Helispot
- Hot Spot
- Incident Command Post
- Mobile Weather Unit
- Pump
- Repeater
- Water Source
- Division Break
- Branch Break
- Fire Access Roads
- Uncontrolled Fire Edge
- Completed Line
- bridges_NAD83
- Refuge Islands
- USFS
- John Bethea SF
- Wilderness
- ONWR Boundary
- Swamps Edge Break

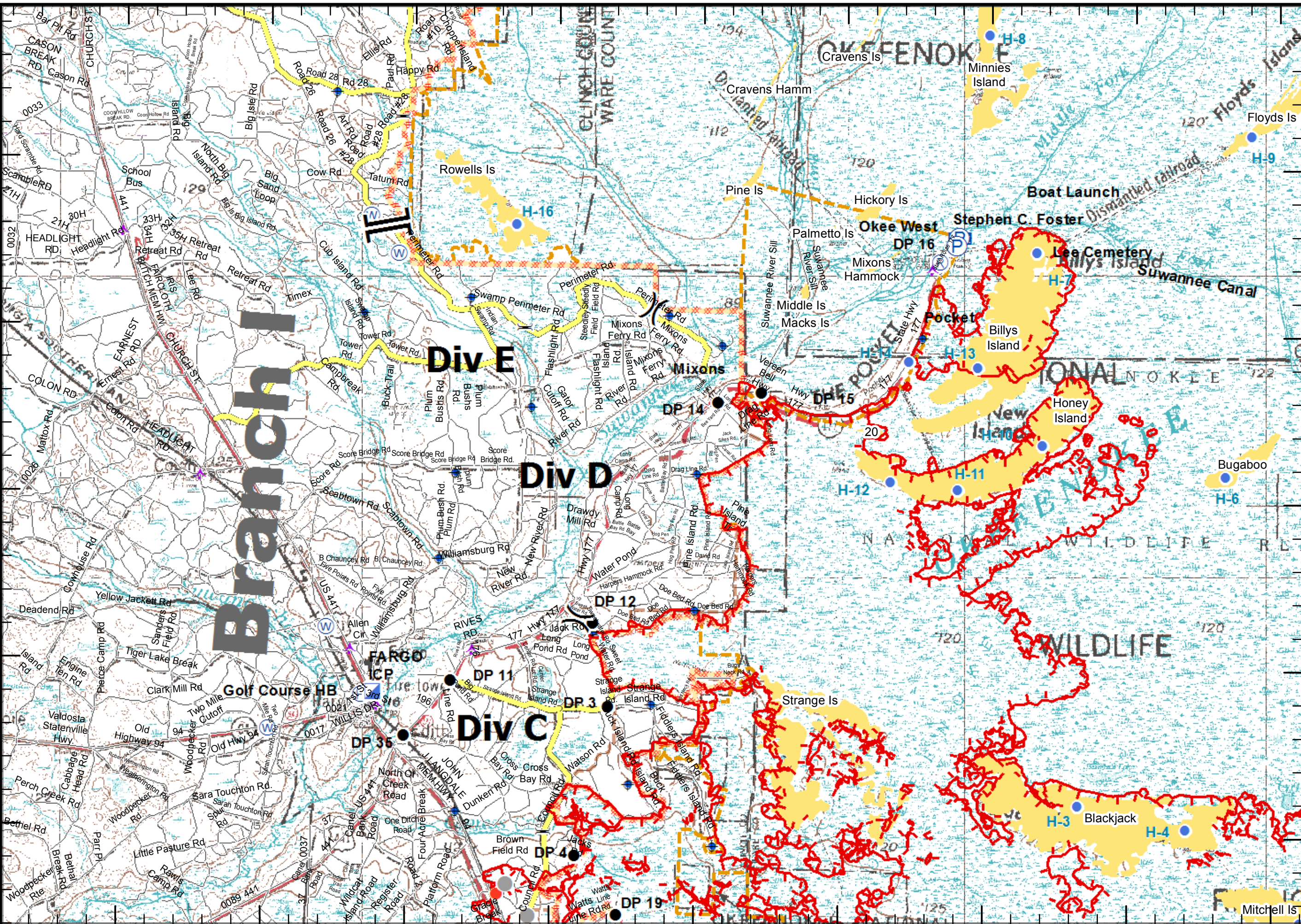


Page Overview
SA Red Team GIS



82°39'W 82°36'W 82°33'W 82°30'W 82°27'W 82°24'W 82°21'W 82°18'W 82°15'W

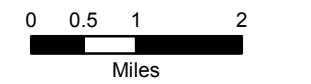
30°51'N 30°48'N 30°45'N 30°42'N 30°39'N



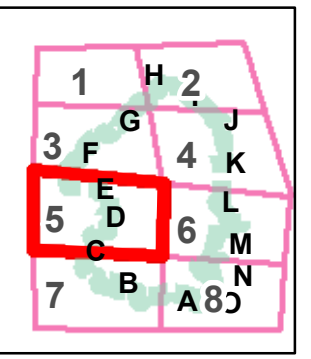
West Mims Fire
GA-OKR 017006
05/06/2017
116,571 ac.NAD1983
@ 5/5/2017 1530 hr

- Aerial Hazard
- Dip Site
- Drop Point
- Fire Origin
- Helibase
- Helispot
- Hot Spot
- Incident Command Post
- Mobile Weather Unit
- Pump
- Repeater
- Water Source
- Division Break
- Branch Break

- Fire Access Roads
- Uncontrolled Fire Edge
- Completed Line
- bridges_NAD83
- Refuge Islands
- USFS
- John Bethea SF
- Wilderness
- ONWR Boundary
- Swamps Edge Break

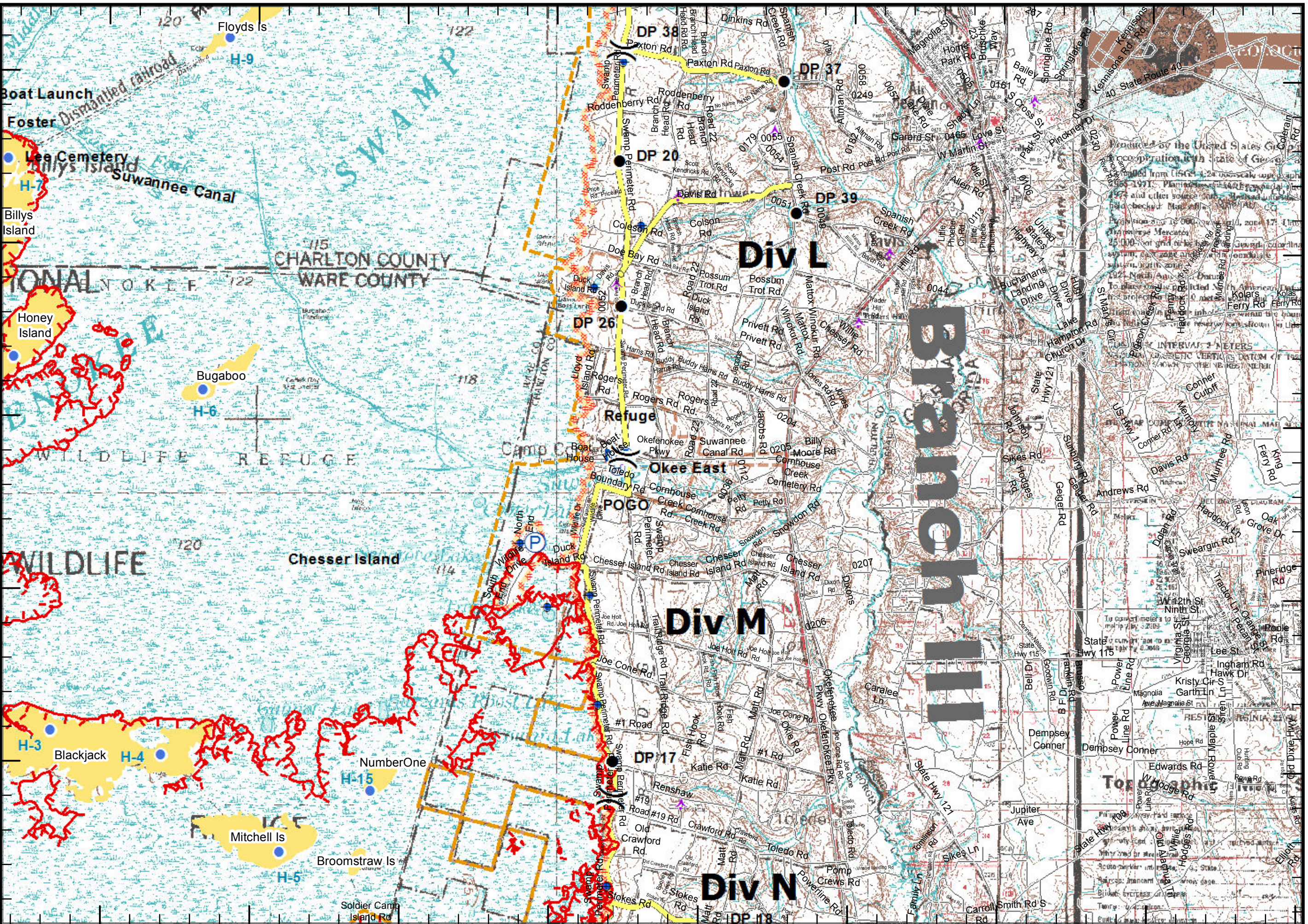


Page 5
SA Red Team GIS



82°18'W 82°15'W 82°12'W 82°9'W 82°6'W 82°3'W 82°0'W 81°57'W

30°51'N 30°48'N 30°45'N 30°42'N 30°39'N



West Mims Fire
GA-OKR 017006
05/06/2017
116,571 ac.NAD1983
@ 5/5/2017 1530 hr

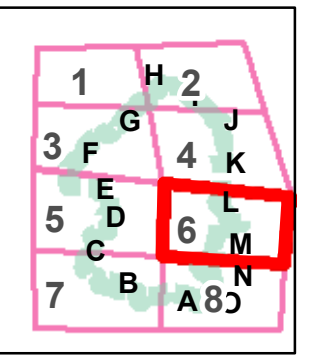
- Aerial Hazard
- Dip Site
- Drop Point
- Fire Origin
- Helibase
- Helispot
- Hot Spot
- Incident Command Post
- Mobile Weather Unit
- Pump
- Repeater
- Water Source

- Division Break
- Branch Break

- Fire Access Roads
- Uncontrolled Fire Edge
- Completed Line
- bridges_NAD83
- Refuge Islands
- USFS
- John Bethea SF
- Wilderness
- ONWR Boundary
- Swamps Edge Break

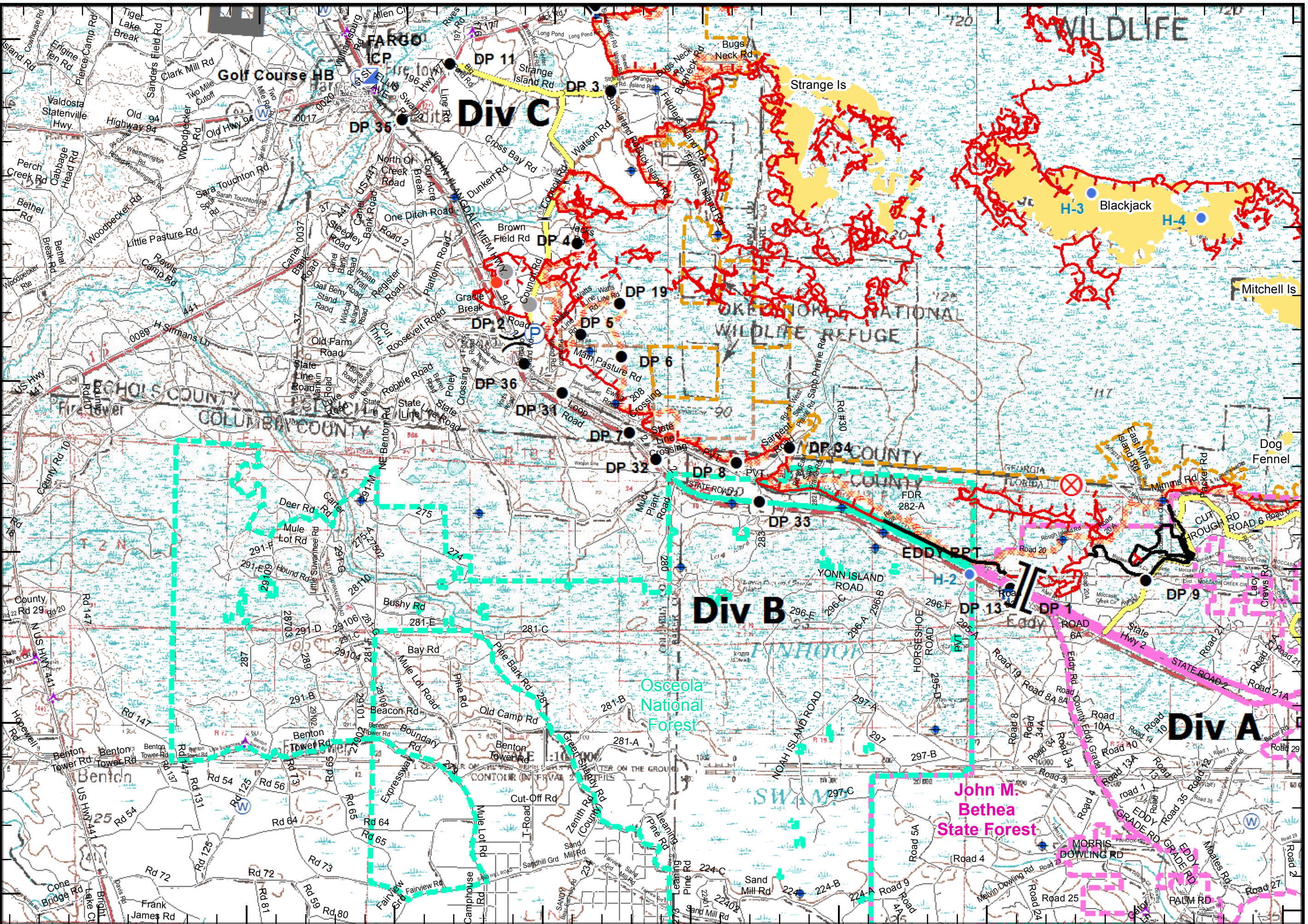


Page 6
SA Red Team GIS



82°39'W 82°36'W 82°33'W 82°30'W 82°27'W 82°24'W 82°21'W 82°18'W 82°15'W

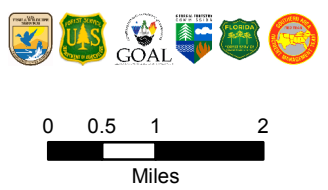
30°42'N 30°39'N 30°36'N 30°33'N 30°30'N 30°27'N



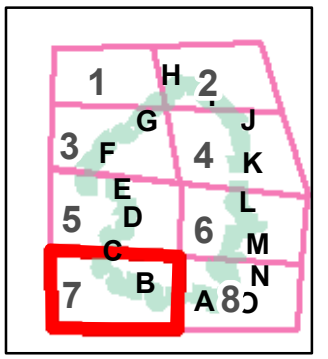
West Mims Fire
GA-OKR 017006
05/06/2017
116,571 ac.NAD1983
@ 5/5/2017 1530 hr

- Aerial Hazard
- Dip Site
- Drop Point
- Fire Origin
- Helibase
- Helispot
- Hot Spot
- Incident Command Post
- Mobile Weather Unit
- Pump
- Repeater
- Water Source
- Division Break
- Branch Break

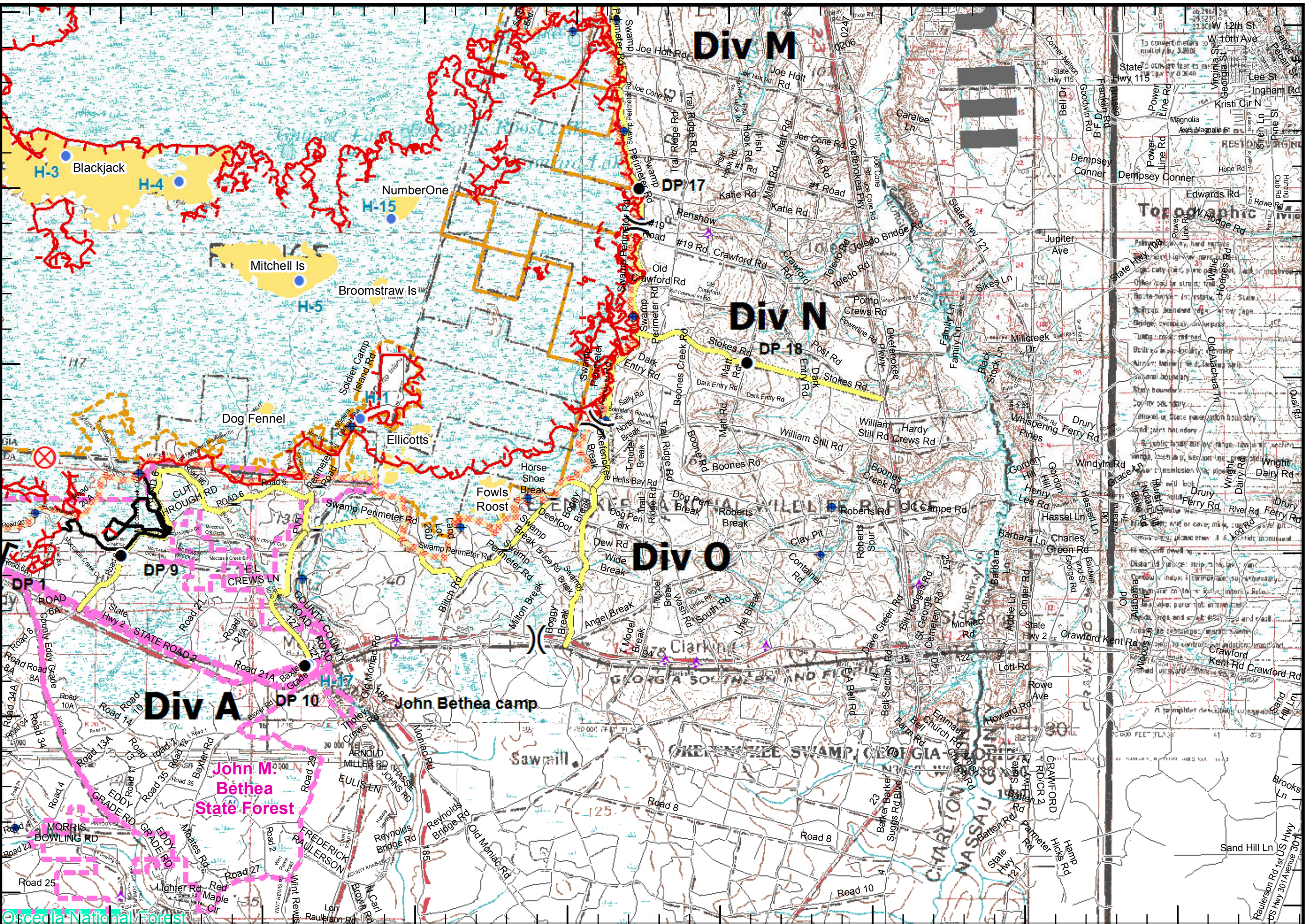
- Fire Access Roads
- Uncontrolled Fire Edge
- Completed Line
- bridges_NAD83
- Refuge Islands
- USFS
- John Bethea SF
- Wilderness
- ONWR Boundary
- Swamps Edge Break



Page 7
SA Red Team GIS



West Mims Fire
GA-OKR 017006
05/06/2017
116,571 ac.NAD1983
@ 5/5/2017 1530 hr



- Aerial Hazard
- Dip Site
- Drop Point
- Fire Origin
- Helibase
- Helispot
- Hot Spot
- Incident Command Post
- Mobile Weather Unit
- Pump
- Repeater
- Water Source
- Division Break
- Branch Break
- Fire Access Roads
- Uncontrolled Fire Edge
- Completed Line
- bridges_NAD83
- Refuge Islands
- USFS
- John Bethea SF
- Wilderness
- ONWR Boundary
- Swamps Edge Break



Page 8
SA Red Team GIS

