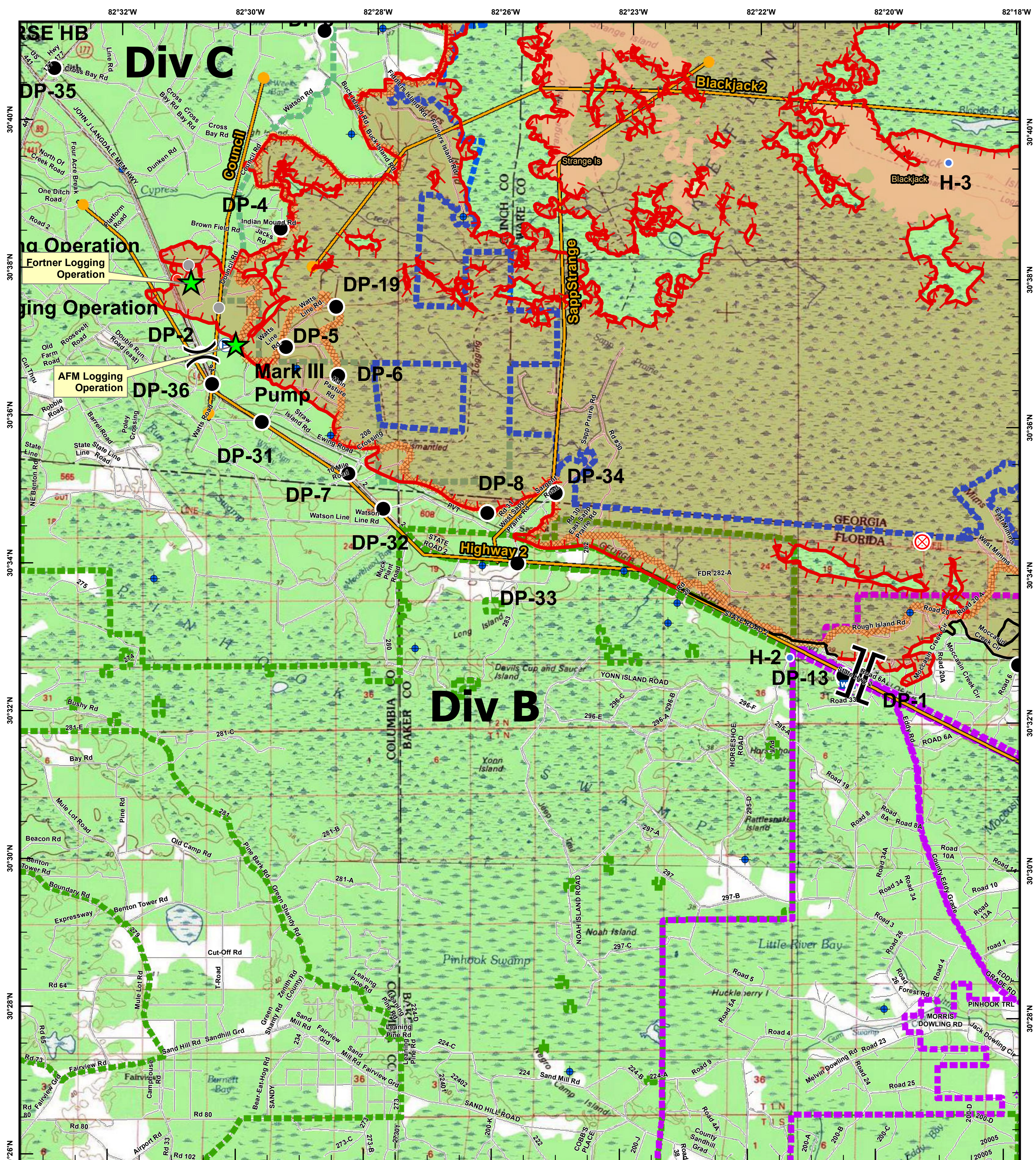


<ul style="list-style-type: none"> Aerial Hazard Dip Site Drop Point Fire Origin Helispot Mobile Weather Unit Repeater Water Source 	<ul style="list-style-type: none"> Uncontrolled Fire Edge Completed Line Bridges canoe_trails Management Action Point Heat Perimeter Refuge Islands Swamps_Edge_Break 	<ul style="list-style-type: none"> Division Break Branch Break Bethea State Forest (FL) OsceolaNF (USFS) Wilderness_Bndry ONWR Bndry Minor Roads
---	---	--

Miles

West Mims Fire
GA-OKR 017006
05/06/2017
Div A Operations Map

IIR as of
5/5/2017 2117 Hrs
118,741 ac.

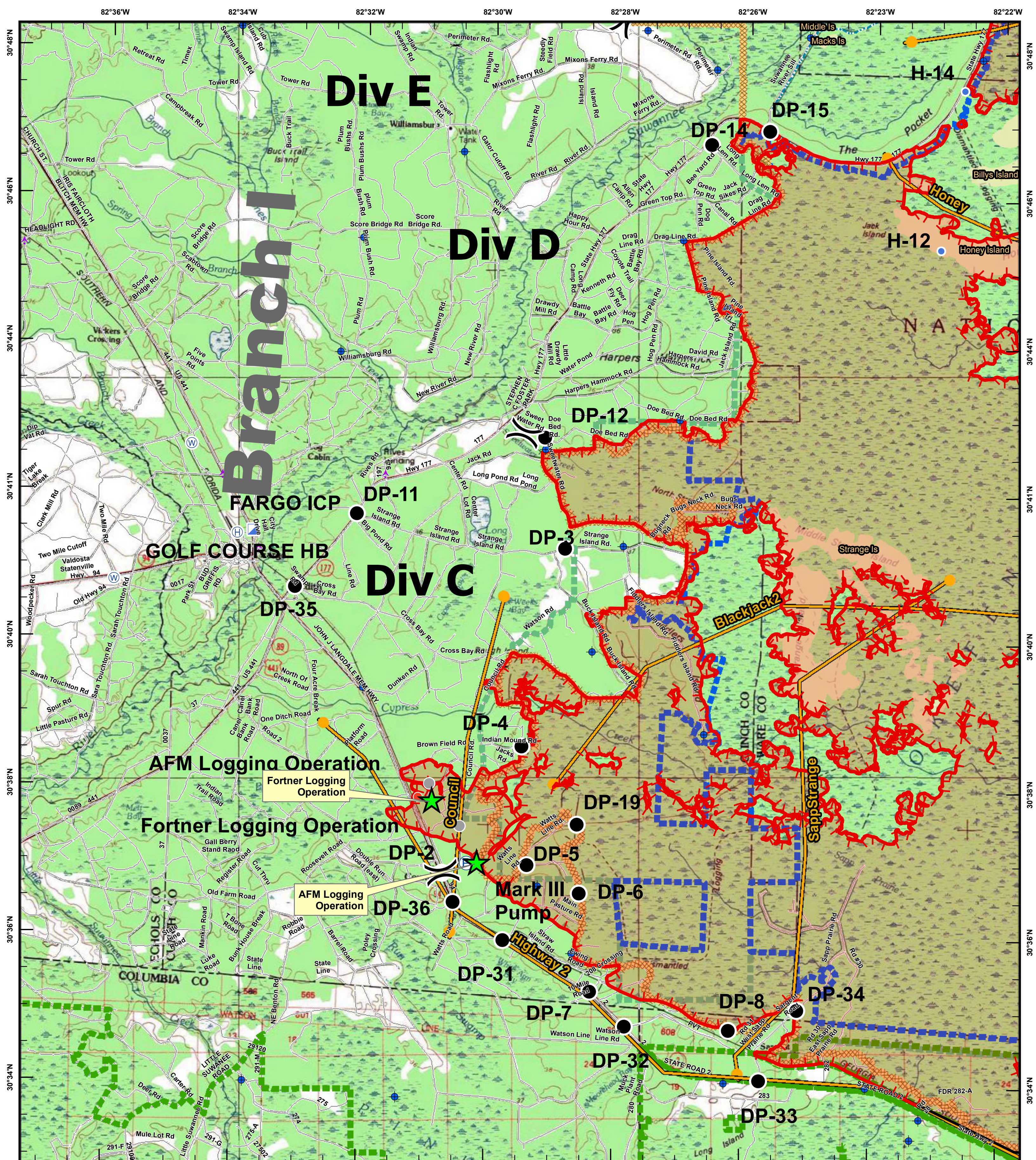


<ul style="list-style-type: none"> Aerial Hazard Dip Site Drop Point Fire Origin Helispot Hot Spot Mobile Weather Unit Pump 	<ul style="list-style-type: none"> Other Division Break Branch Break 	<ul style="list-style-type: none"> Uncontrolled Fire Edge Completed Line Bridges Management Action Point Heat Perimeter Refuge Islands Swamps_Edge_Break 	<ul style="list-style-type: none"> Bethea State Forest (FL) OsceolaNF (USFS) Wilderness_Bndry ONWR Bndry Minor Roads
---	--	--	--

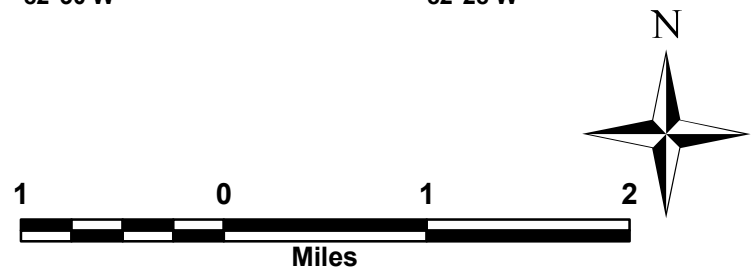
Miles

West Mims Fire
GA-OKR 017006
05/06/2017
Div B Operations Map

IIR as of
5/5/2017 2117 Hrs
118,741 ac.



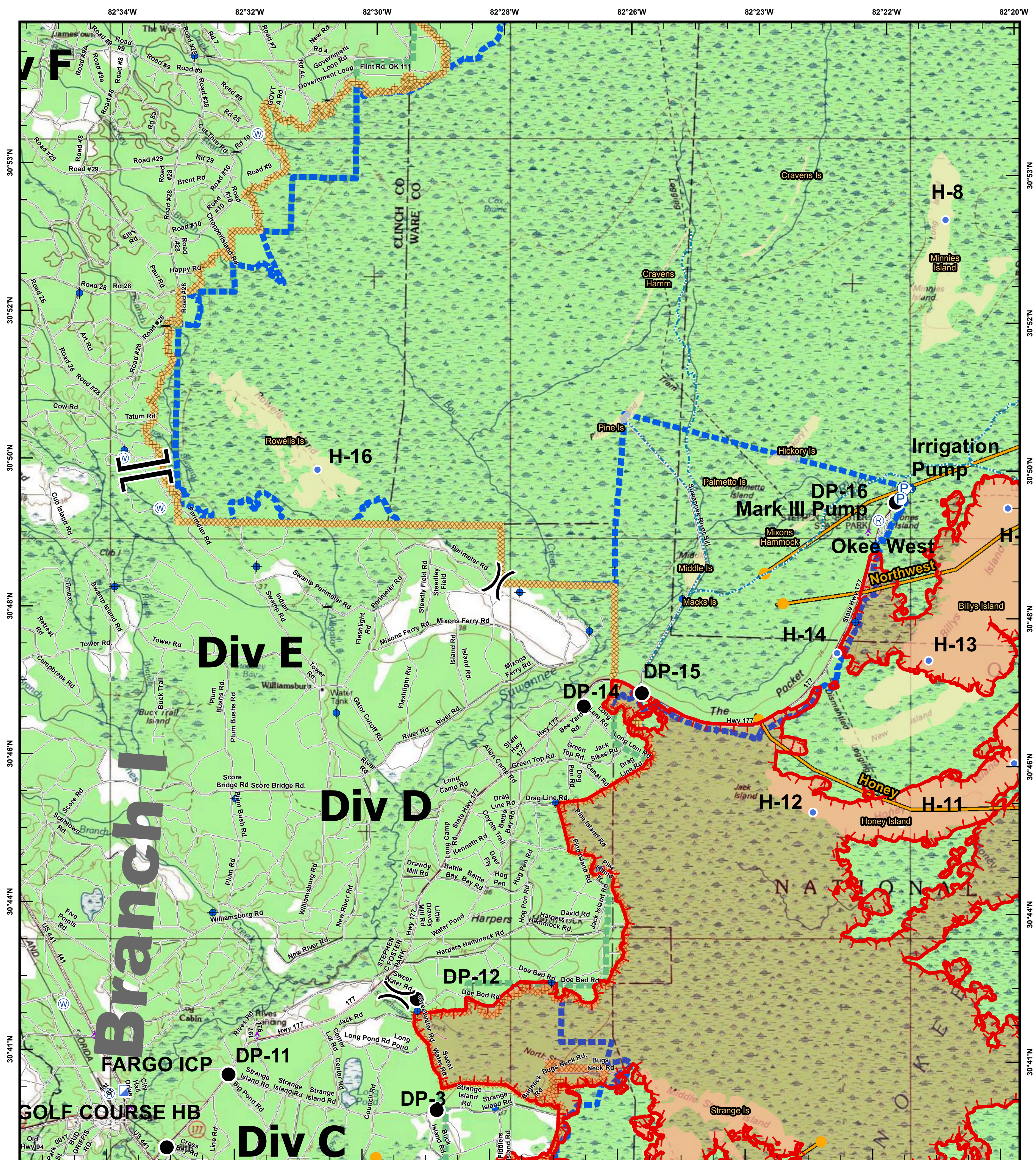
- Aerial Hazard
- Pump
- Uncontrolled Fire Edge
- Repeater
- Completed Line
- Dip Site
- Water Source
- Bridges
- Drop Point
- Other
- Management Action Point
- Helibase
- Helispot
- Hot Spot
- Incident Command Post
- Division Break
- Swamps_Edge_Break
- OsceolaNF (USFS)
- Wilderness_Bndry
- ONWR Bndry
- Minor Roads



West Mims Fire
 GA-OKR 017006
 05/06/2017
 Div C Operations Map

IIR as of
 5/5/2017 2117 Hrs
 118,741 ac.



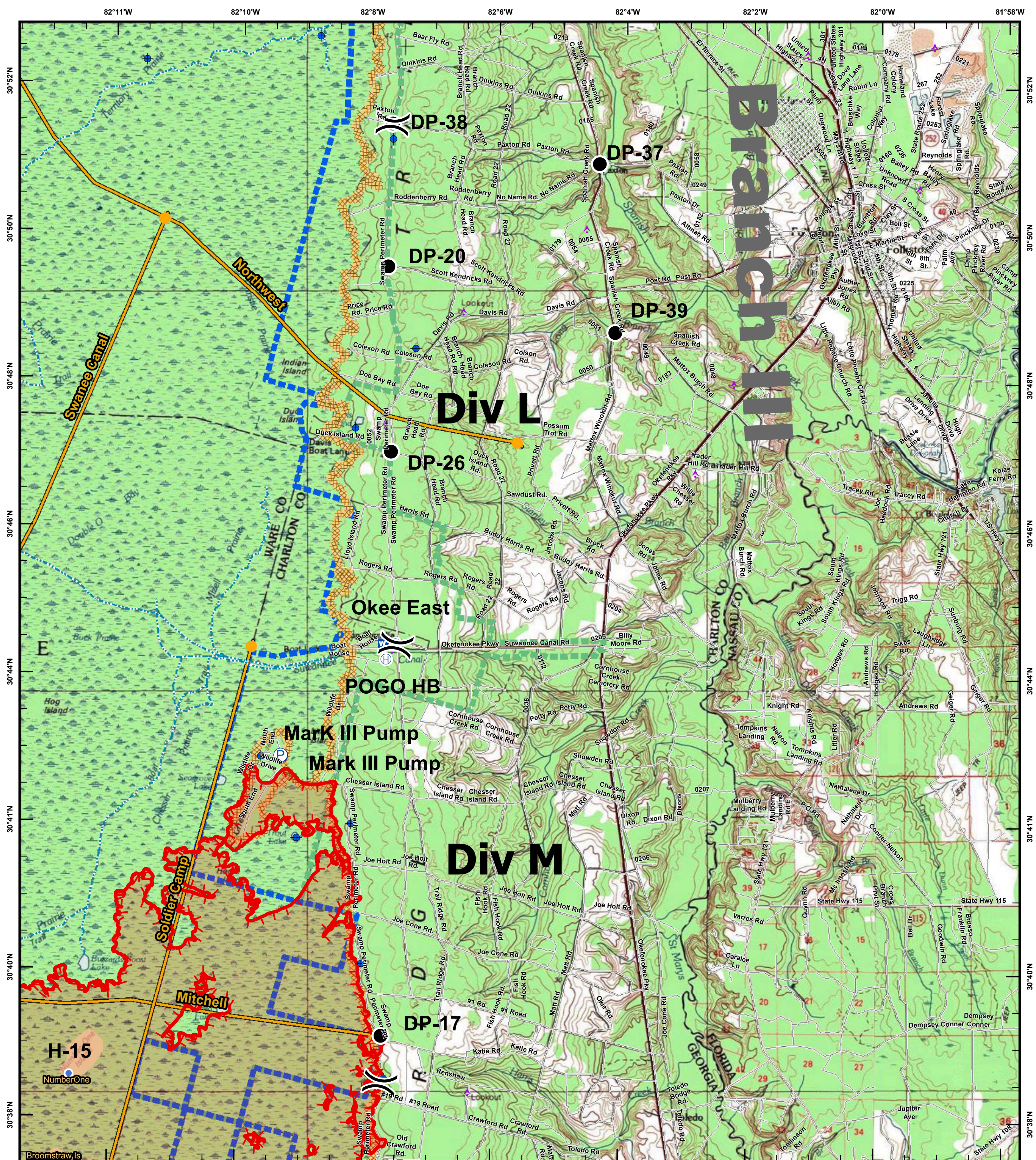


<ul style="list-style-type: none"> Aerial Hazard Dip Site Drop Point Helibase Helispot Incident Command Post Mobile Weather Unit Pump 	<ul style="list-style-type: none"> Water Source Division Break Branch Break Swamps_Edge_Break Wilderness_Bndry ONWR_Bndry Minor Roads 	<ul style="list-style-type: none"> Uncontrolled Fire Edge Bridges canoe_trails Management Action Point Heat Perimeter Refuge Islands
---	---	--

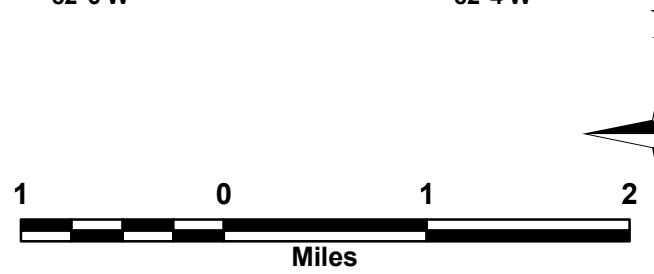
Miles

West Mims Fire
GA-OKR 017006
05/06/2017
Div D Operations Map

IIR as of
5/5/2017 2117 Hrs
118,741 ac.



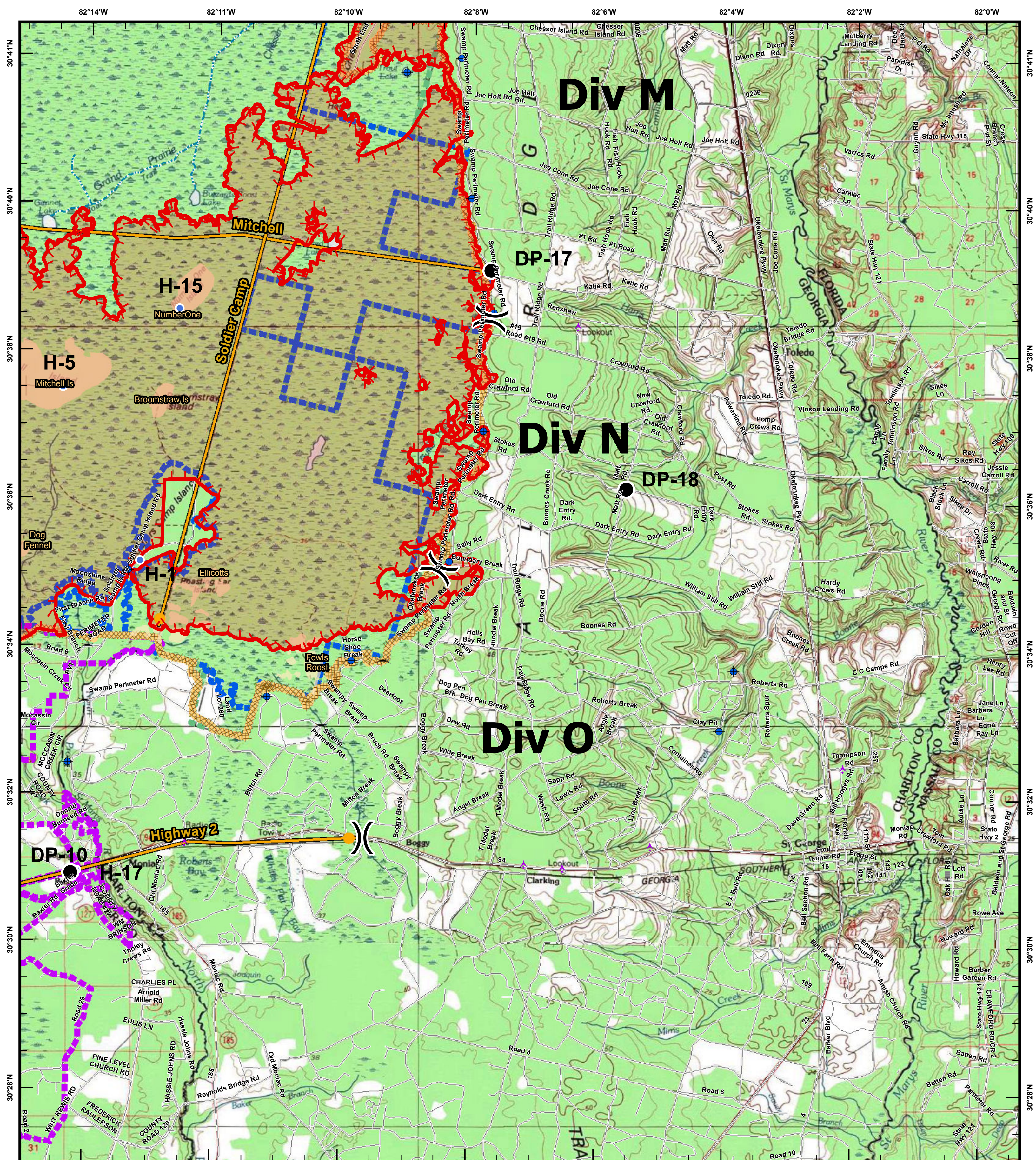
- Aerial Hazard
- Dip Site
- Drop Point
- Helibase
- Helispot
- Mobile Weather Unit
- Pump
- Repeater
- Division Break
- Uncontrolled Fire Edge
- canoe_trails
- Management Action Point
- Heat Perimeter
- Refuge Islands
- Swamps_Edge_Break
- Wilderness_Bndry
- ONWR Bndry
- Minor Roads



West Mims Fire
GA-OKR 017006
05/06/2017
Div M Operations Map

IIR as of
5/5/2017 2117 Hrs
118,741 ac.





<ul style="list-style-type: none"> Aerial Hazard Dip Site Drop Point Helispot 	<ul style="list-style-type: none"> Uncontrolled Fire Edge Bridges Management Action Point Heat Perimeter Refuge Islands Swamps_Edge_Break 	<ul style="list-style-type: none"> Betha State Forest (FL) Wilderness_Bndry ONWR Bndry Minor Roads
---	---	--

Miles

West Mims Fire
GA-OKR 017006
05/06/2017
Div N/O Operations Map

IIR as of
5/5/2017 2117 Hrs
118,741 ac.