

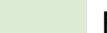


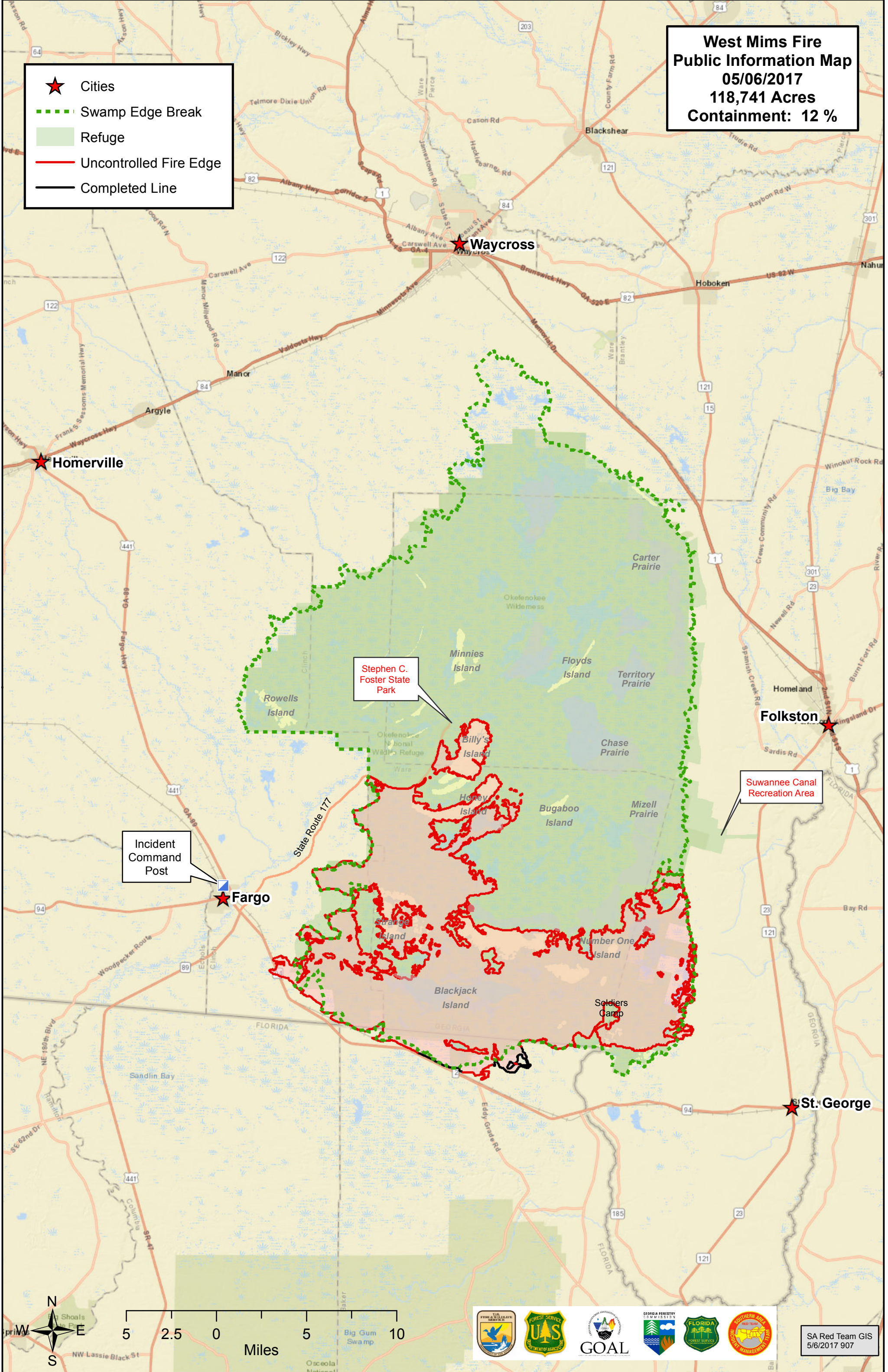


**West Mims Fire
Public Information Map
05/06/2017
118,741 Acres
Containment: 12 %**

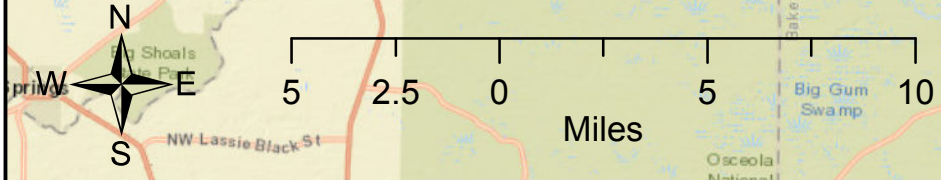
-  Cities
-  Swamp Edge Break
-  Refuge
-  Uncontrolled Fire Edge
-  Completed Line



Incident Command Post

Stephen C. Foster State Park

Suwannee Canal Recreation Area



SA Red Team GIS
5/6/2017 907