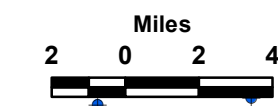
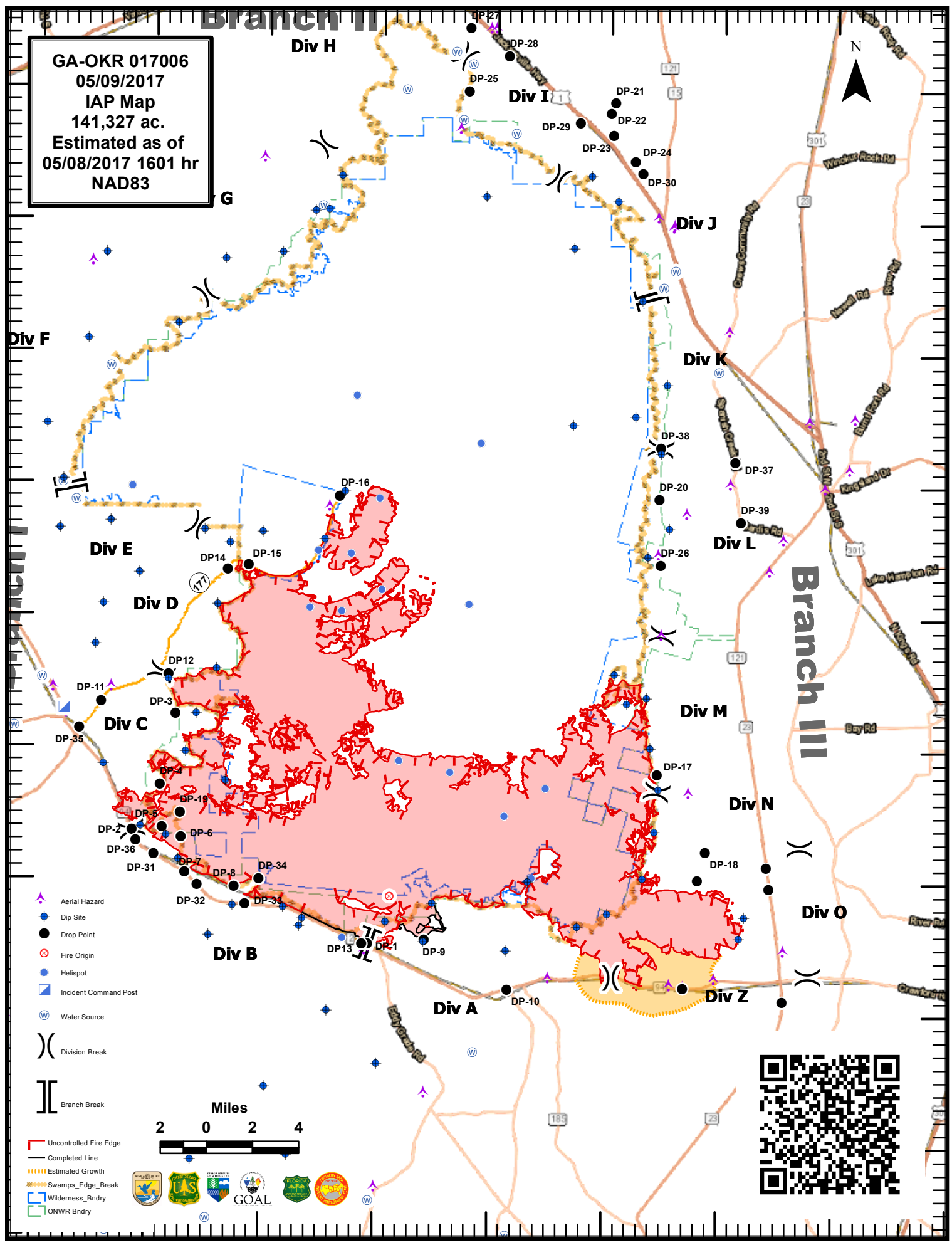


82°35'W 82°30'W 82°25'W 82°20'W 82°15'W 82°10'W 82°5'W 82°0'W

31°5'N 31°0'N 30°55'N 30°50'N 30°45'N 30°40'N 30°35'N 30°30'N 30°25'N

31°5'N 31°0'N 30°55'N 30°50'N 30°45'N 30°40'N 30°35'N 30°30'N 30°25'N

GA-OKR 017006
05/09/2017
IAP Map
141,327 ac.
Estimated as of
05/08/2017 1601 hr
NAD83



82°35'W 82°30'W 82°25'W 82°20'W 82°15'W 82°10'W 82°5'W 82°0'W 81°55'W