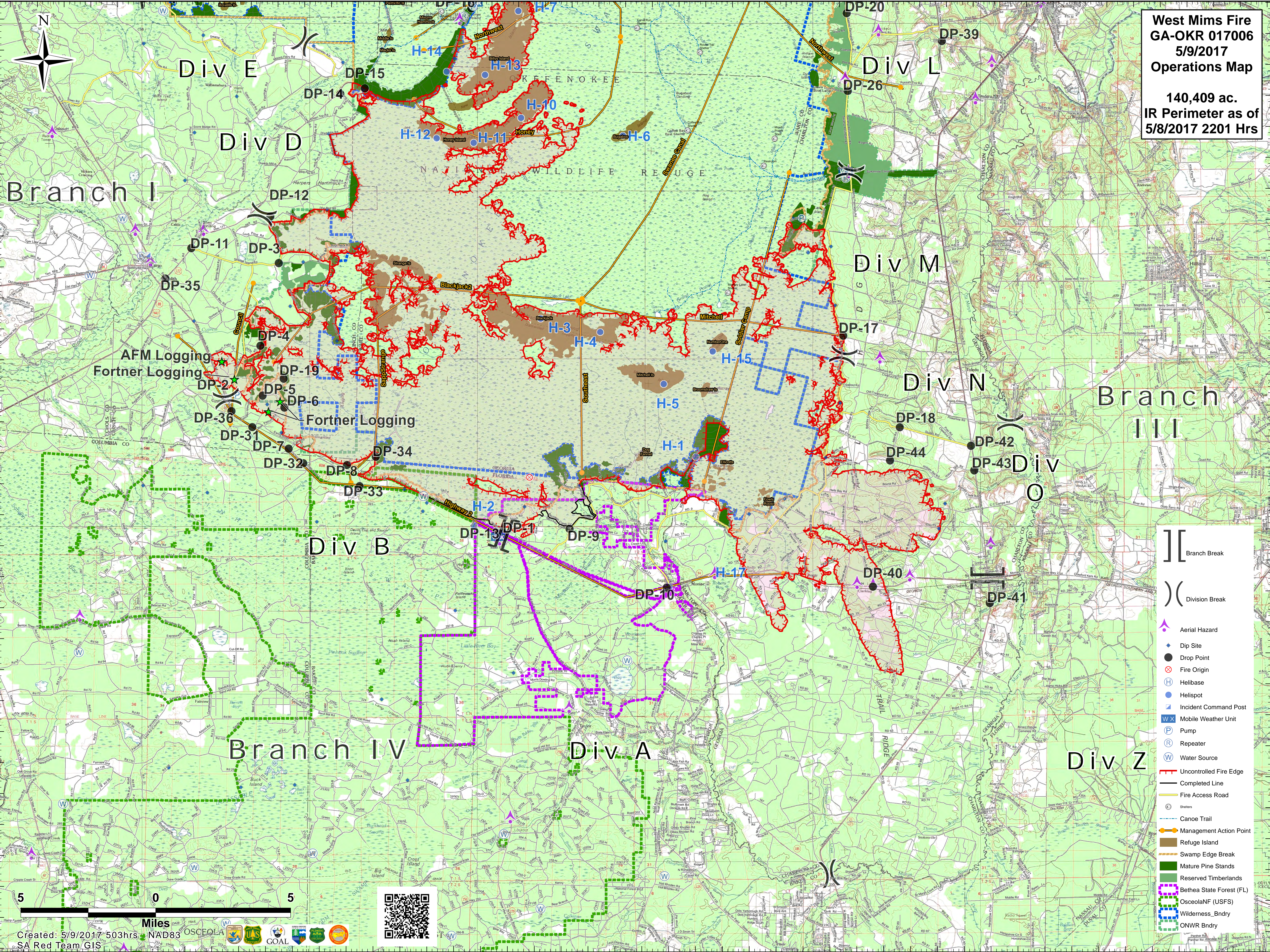


**West Mims Fire**  
**GA-OKR 017006**  
**5/9/2017**  
**Operations Map**

140,409 ac.  
 IR Perimeter as of  
 5/8/2017 2201 Hrs



- [ ] Branch Break
- ) ( Division Break
- ▲ Aerial Hazard
- Dip Site
- Drop Point
- ⊗ Fire Origin
- H Helibase
- Helispot
- ⊠ Incident Command Post
- W X Mobile Weather Unit
- P Pump
- R Repeater
- W Water Source
- Uncontrolled Fire Edge
- Completed Line
- Fire Access Road
- ⊙ Shelters
- Canoe Trail
- Management Action Point
- Refuge Island
- Swamp Edge Break
- Mature Pine Stands
- Reserved Timberlands
- Bethea State Forest (FL)
- OsceolaNF (USFS)
- Wilderness\_Bndry
- ONWR Bndry