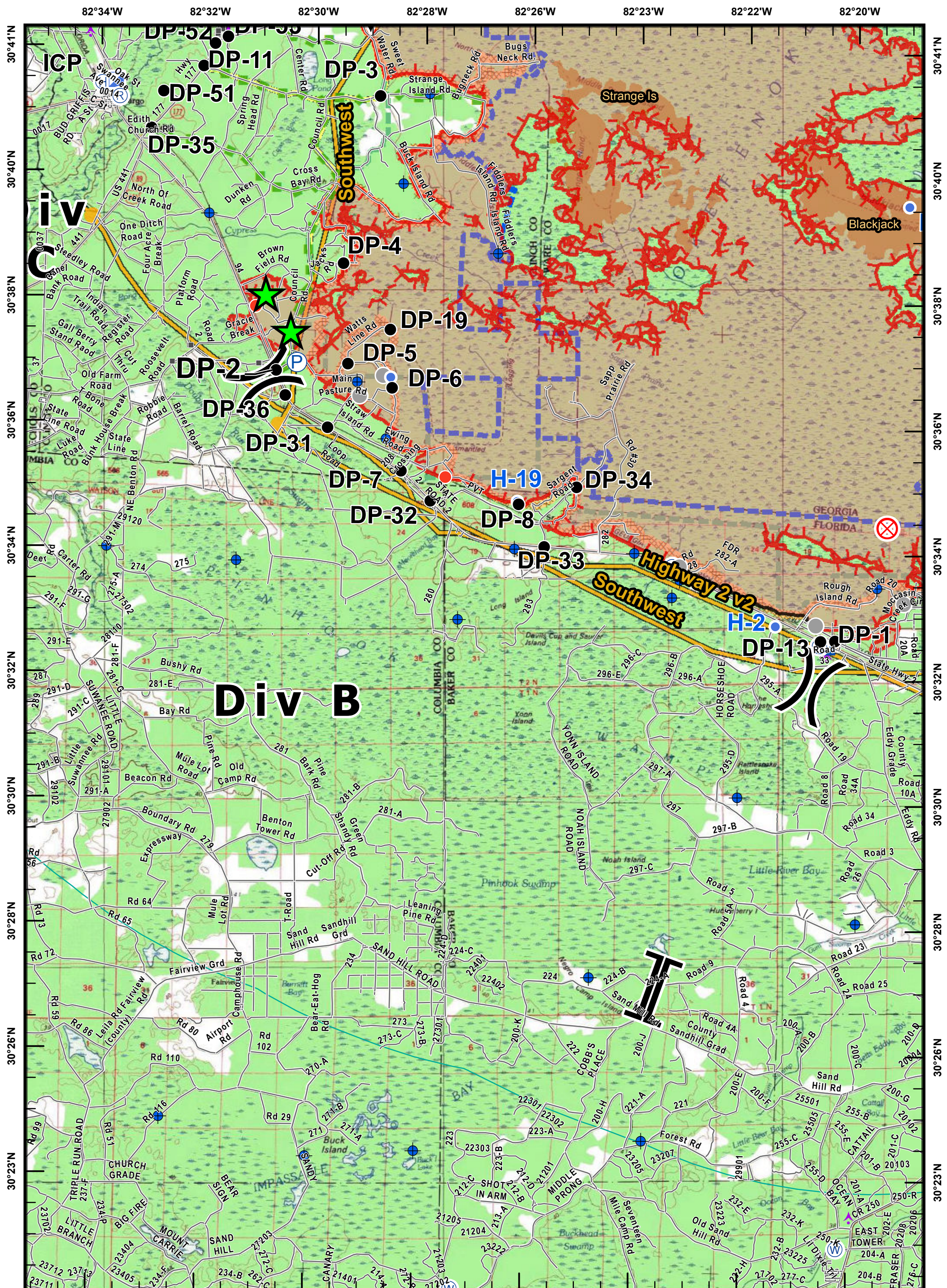
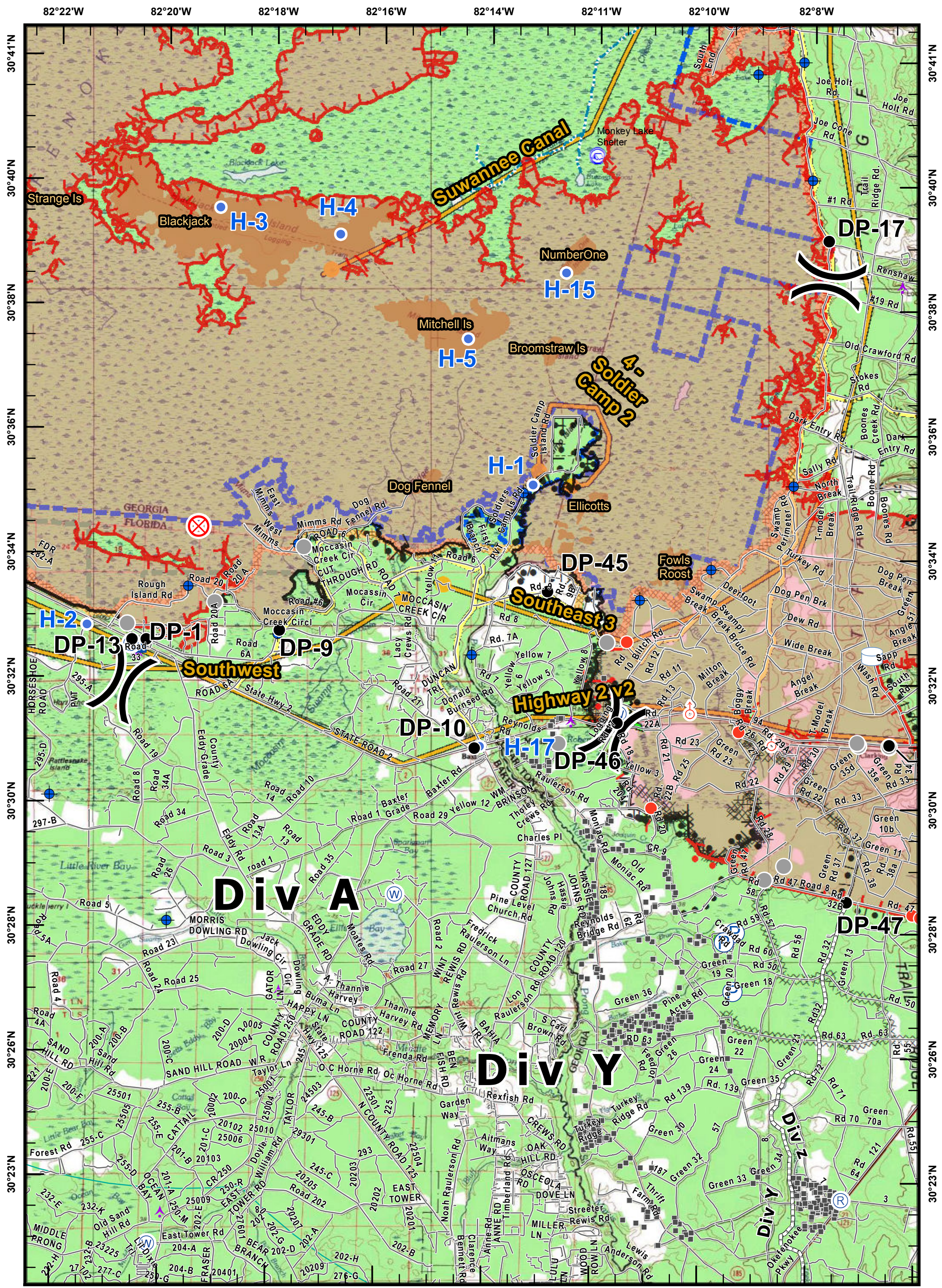


<ul style="list-style-type: none"> Aerial Hazard Dip Site Drop Point Fire Origin Helibase Helispot 	<ul style="list-style-type: none"> Camp Incident Command Post Structure Pump Repeater Water Source 	<ul style="list-style-type: none"> Staging Area Division Break Branch Break Uncontrolled Fire Edge Completed Line 	<ul style="list-style-type: none"> Completed Dozer Line Completed Burnout Escape Route Swamp Edge Break Management Action Point Refuge Island Fire Access Road 		<p>West Mims Fire GA-OKR-017006 05/17/2017 Day Shift Page 1 IAP MapBook Estimated 5/15/2017 1000 Hrs 152,231 ac.</p>
--	--	---	--	--	--

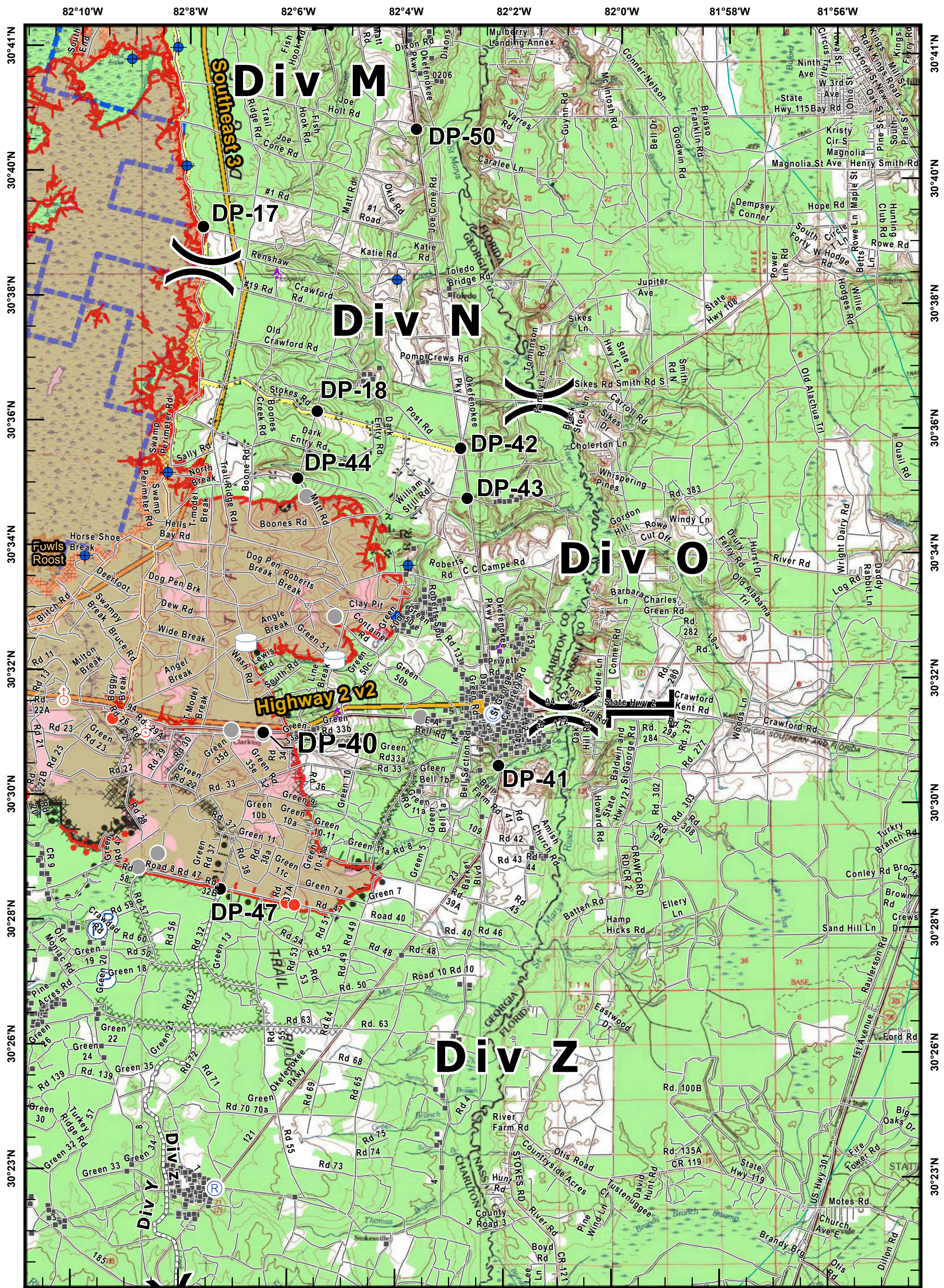


<ul style="list-style-type: none"> Aerial Hazard Dip Site Drop Point Fire Origin Helibase Helispot 	<ul style="list-style-type: none"> Camp Incident Command Post Structure Pump Repeater Water Source 	<ul style="list-style-type: none"> Staging Area Division Break Branch Break Uncontrolled Fire Edge Completed Line 	<ul style="list-style-type: none"> Completed Dozer Line Completed Burnout Escape Route Swamp Edge Break Management Action Point Refuge Island Fire Access Road 	<div style="display: flex; align-items: center;"> <div style="margin-left: 10px;"> <p>0 1 2 Miles</p> <p>West Mims Fire GA-OKR-017006 05/17/2017 Day Shift</p> <p>Page 2 IAP MapBook Estimated 5/15/2017 1000 Hrs 152,231 ac.</p> </div> </div>
--	--	---	--	--

Created: 5/17/2017 425hrs
SA Red Team GIS



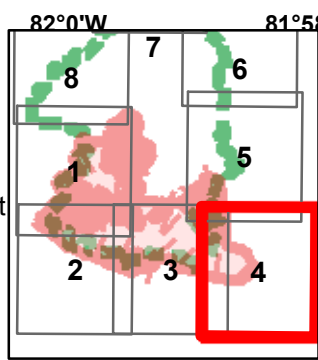
<ul style="list-style-type: none"> Aerial Hazard Dip Site Drop Point Fire Origin Helibase Helispot 	<ul style="list-style-type: none"> Camp Incident Command Post Structure Pump Repeater Water Source 	<ul style="list-style-type: none"> Staging Area Division Break Branch Break Uncontrolled Fire Edge Completed Line 	<ul style="list-style-type: none"> Completed Dozer Line Completed Burnout Escape Route Swamp Edge Break Management Action Point Refuge Island Fire Access Road 		<p>Scale: 0 to 2 Miles</p> <p>West Mims Fire GA-OKR-017006 05/17/2017 Day Shift Page 3 IAP MapBook Estimated 5/15/2017 1000 Hrs 152,231 ac.</p>
--	--	---	--	--	---



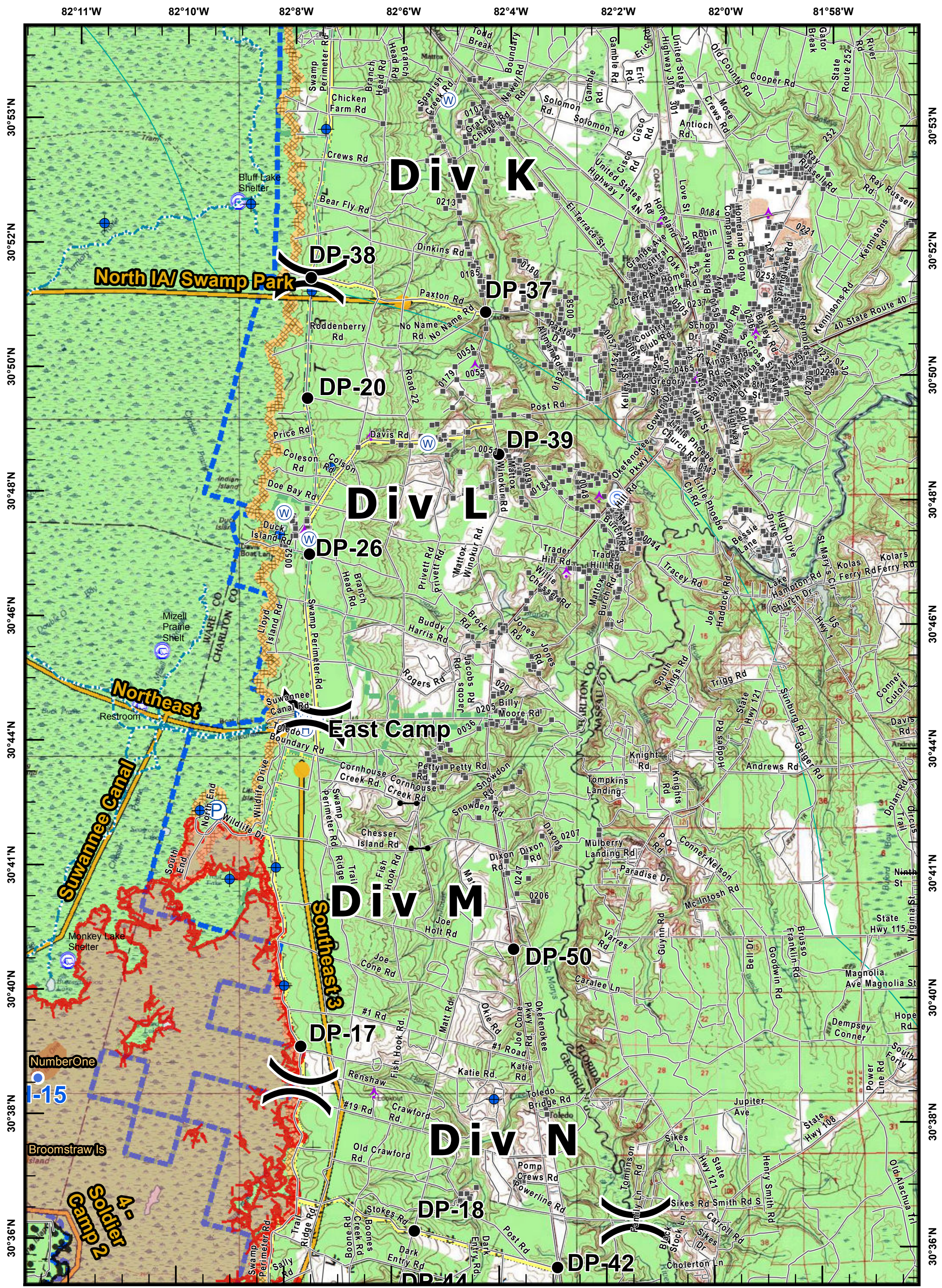
- Aerial Hazard
- Dip Site
- Drop Point
- Fire Origin
- Helibase
- Helispot
- Camp
- Incident Command Post
- Structure
- Pump
- Repeater
- Water Source

- Staging Area
- Division Break
- Branch Break
- Uncontrolled Fire Edge
- Completed Line
- Completed Dozer Line
- Completed Burnout
- Escape Route
- Swamp Edge Break
- Management Action Point
- Refuge Island
- Fire Access Road

- Staging Area
- Division Break
- Branch Break
- Uncontrolled Fire Edge
- Completed Line
- Completed Dozer Line
- Completed Burnout
- Escape Route
- Swamp Edge Break
- Management Action Point
- Refuge Island
- Fire Access Road



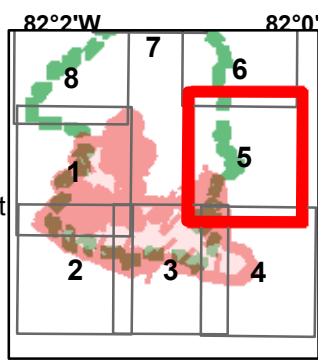
West Mims Fire
GA-OKR-017006
05/17/2017
Day Shift
 Page 4 IAP MapBook
 Estimated 5/15/2017 1000 Hrs
 152,231 ac.



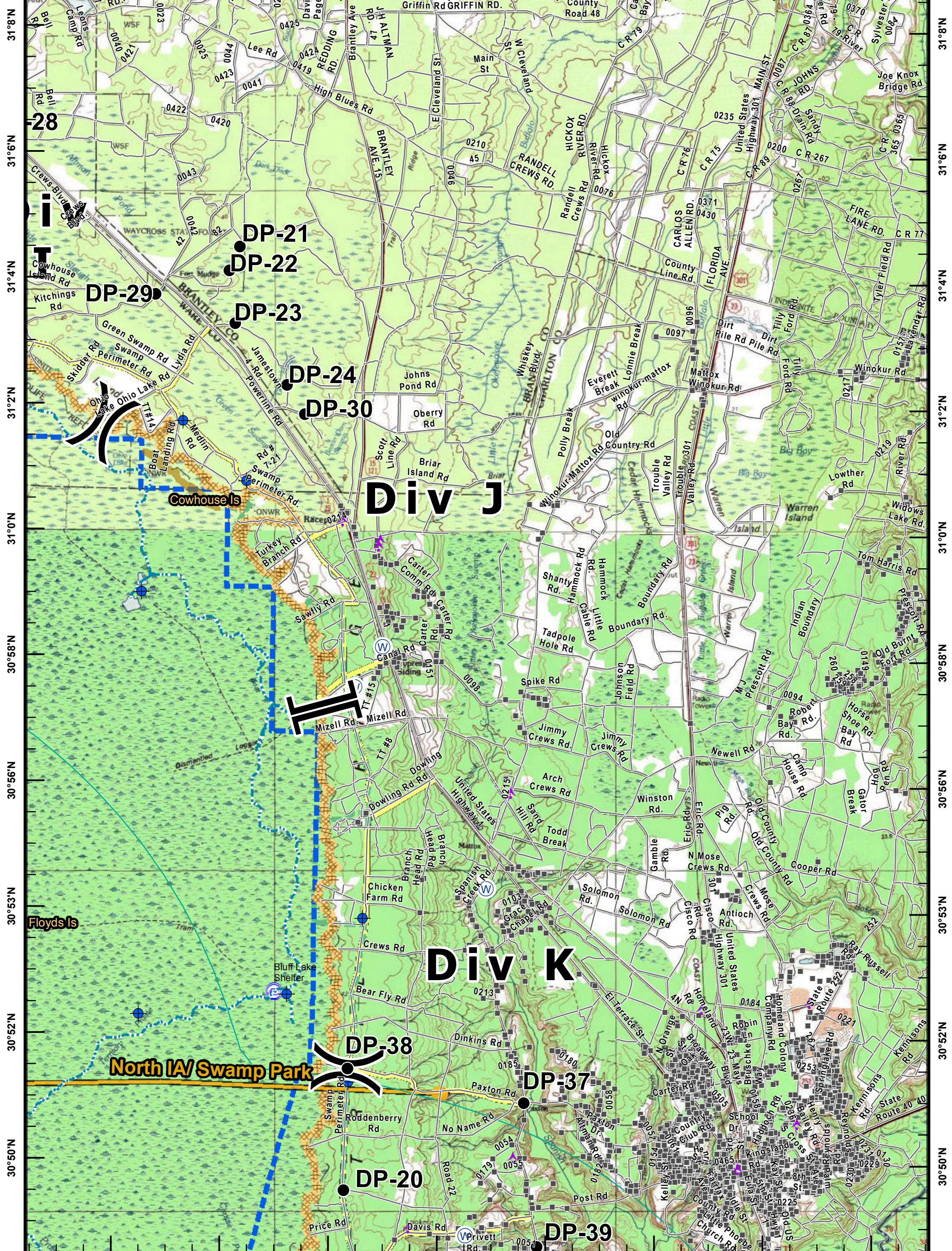
- Aerial Hazard
- Dip Site
- Drop Point
- Fire Origin
- Helibase
- Helispot
- Camp
- Incident Command Post
- Structure
- Pump
- Repeater
- Water Source

- Staging Area
- Division Break
- Branch Break
- Uncontrolled Fire Edge
- Completed Line

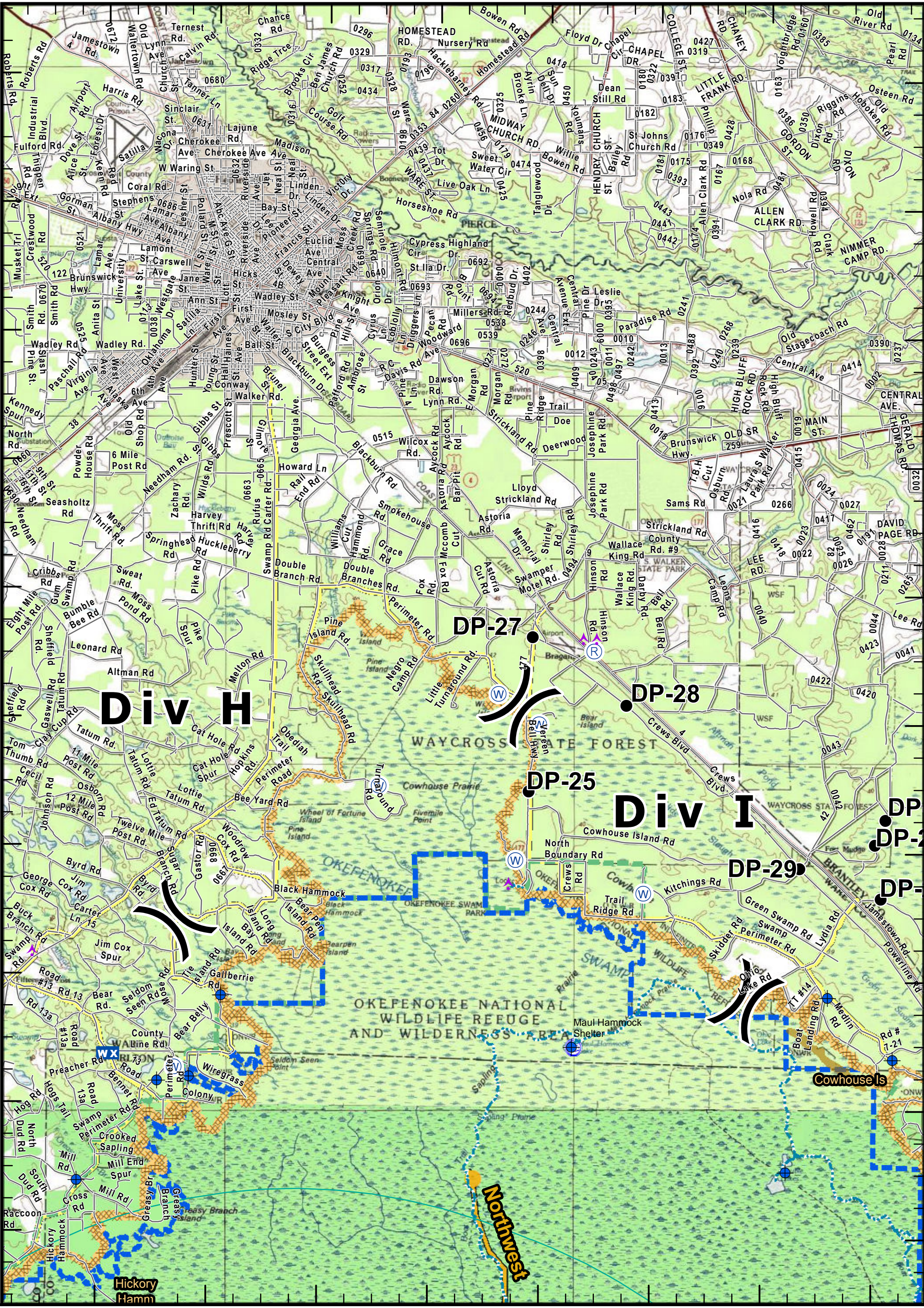
- Completed Dozer Line
- Escape Route
- Swamp Edge Break
- Management Action Point
- Refuge Island
- Fire Access Road



0 1 2
 Miles
West Mims Fire
GA-OKR-017006
05/17/2017
Day Shift
 Page 5 IAP MapBook
 Estimated 5/15/2017 1000 Hrs
 152,231 ac.



<ul style="list-style-type: none"> Aerial Hazard Dip Site Drop Point Fire Origin Helibase Helispot 	<ul style="list-style-type: none"> Camp Incident Command Post Structure Pump Repeater Water Source 	<ul style="list-style-type: none"> Staging Area Division Break Branch Break Uncontrolled Fire Edge Completed Line 	<ul style="list-style-type: none"> Completed Dozer Line Completed Burnout Escape Route Swamp Edge Break Management Action Point Refuge Island Fire Access Road 	<p>82°11'W 82°10'W 82°8'W 82°6'W 82°4'W 82°2'W 82°0'W 81°58'W</p> <p>Miles</p> <p>West Mims Fire GA-OKR-017006 05/17/2017 Day Shift Page 6 IAP MapBook Estimated 5/15/2017 1000 Hrs 152,231 ac.</p>
--	--	---	--	---



Div H

Div I

DP-27

DP-28

DP-25

DP-29

DP-30

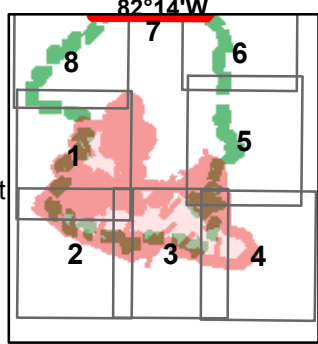
DP-31

Northwest

Hickory Hamm

Cowhouse Is

- Aerial Hazard
- Camp
- Staging Area
- Completed Dozer Line
- Dip Site
- Incident Command Post
- Division Break
- Completed Burnout
- Drop Point
- Structure
- Branch Break
- Escape Route
- Fire Origin
- Pump
- Swamp Edge Break
- Helibase
- Repeater
- Management Action Point
- Uncontrolled Fire Edge
- Refuge Island
- Helispot
- Water Source
- Completed Line
- Fire Access Road



1 0 1 2 Miles

West Mims Fire

GA-OKR-017006

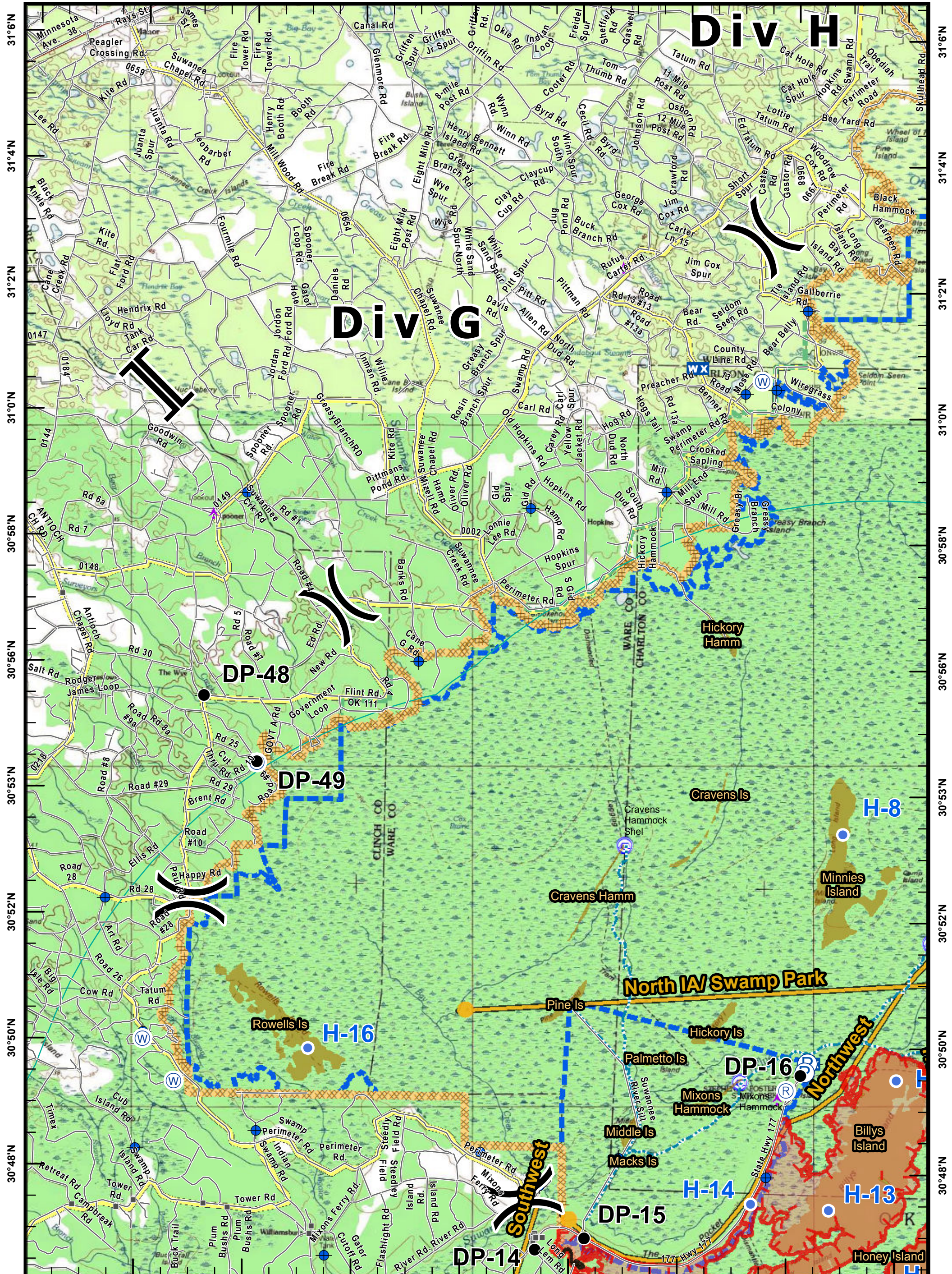
05/17/2017

Day Shift

 Page 7 IAP MapBook

 Estimated 5/15/2017 1000 Hrs

 152,231 ac.



<ul style="list-style-type: none"> Aerial Hazard Dip Site Drop Point Fire Origin Helibase Helispot 	<ul style="list-style-type: none"> Camp Incident Command Post Structure Pump Repeater Water Source 	<ul style="list-style-type: none"> Staging Area Division Break Branch Break Uncontrolled Fire Edge Completed Line 	<ul style="list-style-type: none"> Completed Dozer Line Completed Burnout Escape Route Swamp Edge Break Management Action Point Refuge Island Fire Access Road 		<p>West Mims Fire GA-OKR-017006 05/17/2017 Day Shift Page 8 IAP MapBook Estimated 5/15/2017 1000 Hrs 152,231 ac.</p>
--	--	---	--	--	--