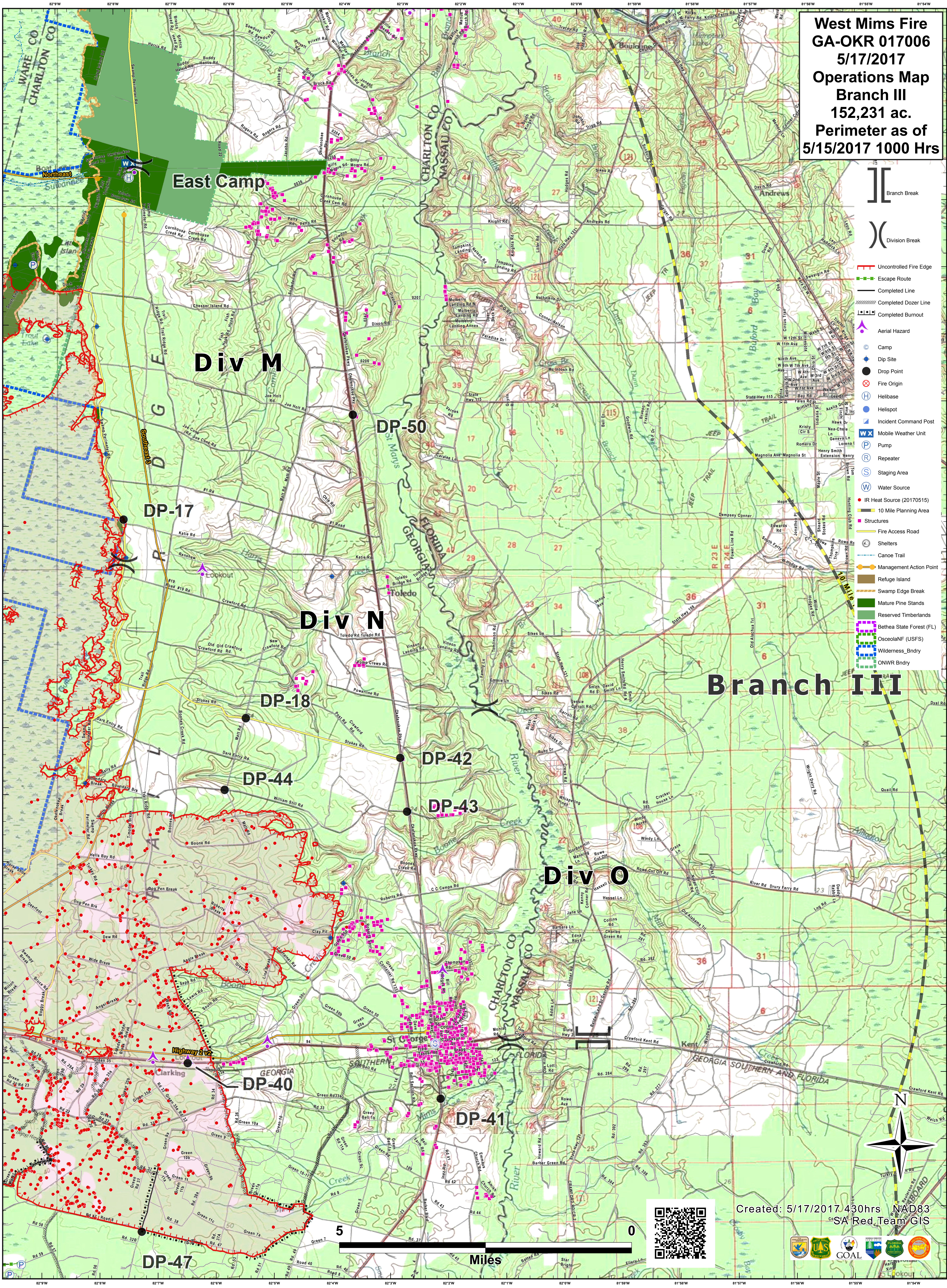


West Mims Fire
GA-OKR 017006
5/17/2017
Operations Map
Branch III
152,231 ac.
Perimeter as of
5/15/2017 1000 Hrs



- Branch Break
- Division Break
- Uncontrolled Fire Edge
- Escape Route
- Completed Line
- Completed Dozer Line
- Completed Burnout
- Aerial Hazard
- Camp
- Dip Site
- Drop Point
- Fire Origin
- Helibase
- Helispot
- Incident Command Post
- Mobile Weather Unit
- Pump
- Repeater
- Staging Area
- Water Source
- IR Heat Source (20170515)
- 10 Mile Planning Area
- Structures
- Fire Access Road
- Shelters
- Canoe Trail
- Management Action Point
- Refuge Island
- Swamp Edge Break
- Mature Pine Stands
- Reserved Timberlands
- Bethae State Forest (FL)
- OsceolaNF (USFS)
- Wilderness_Bndry
- ONWR Bndry

Branch III

East Camp

Div M

Div N

Div O

DP-17

DP-50

DP-18

DP-42

DP-44

DP-43

DP-40

DP-41

DP-47



Created: 5/17/2017 4:30hrs NAD83
 SA Red Team GIS

