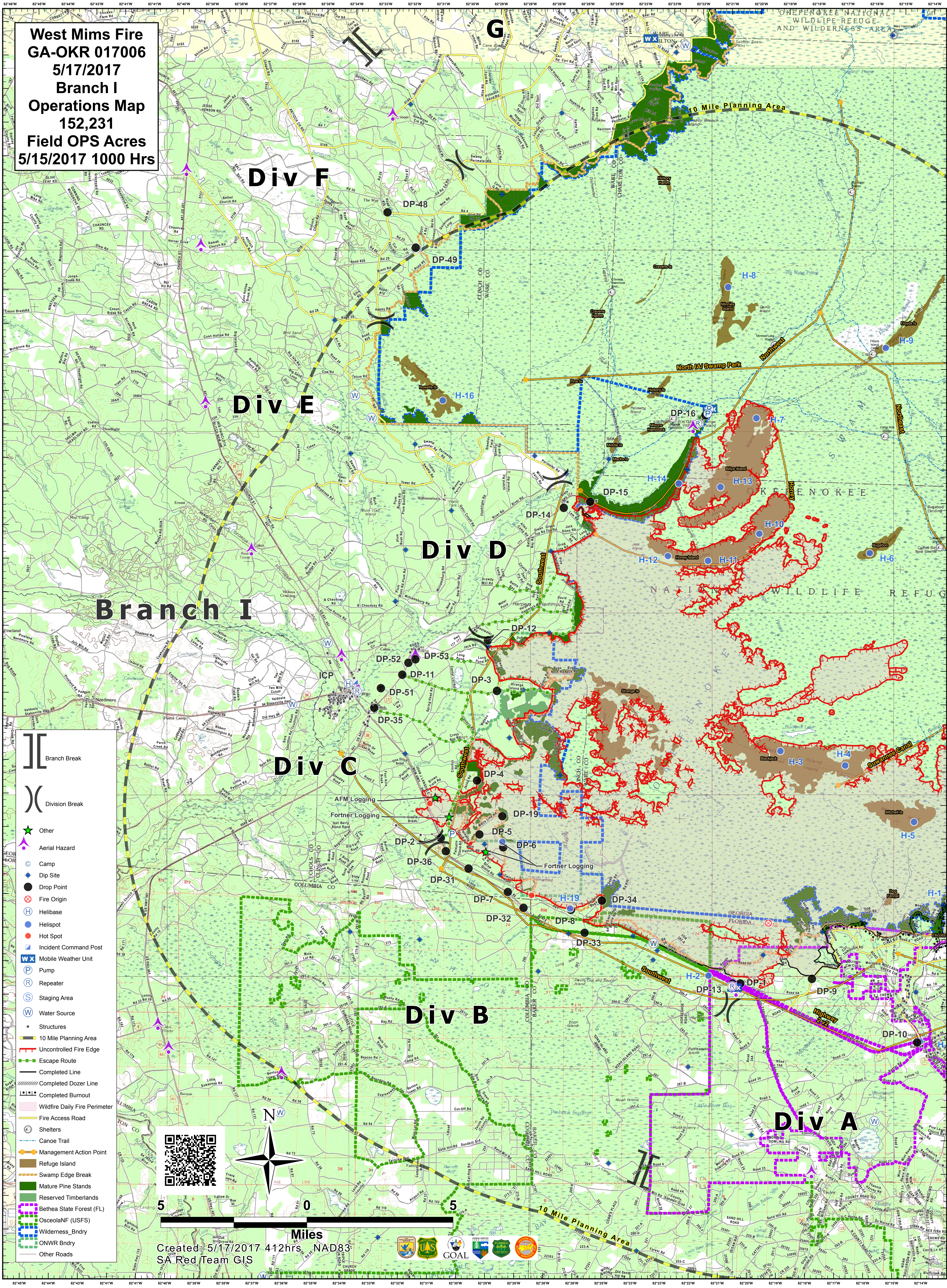
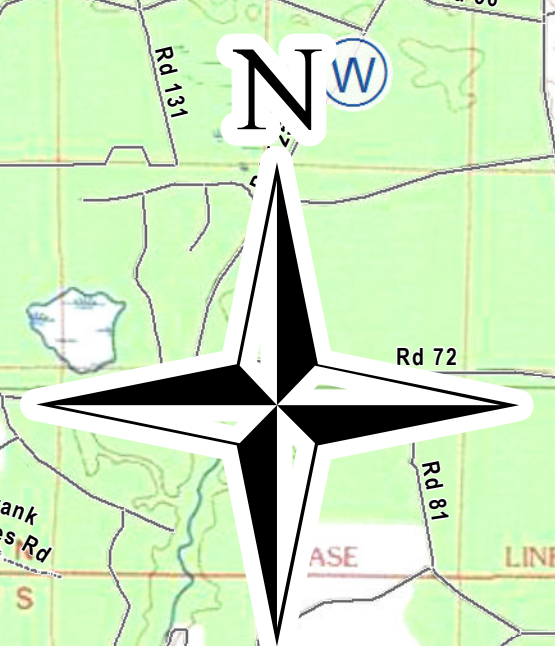


West Mims Fire
GA-OKR 017006
5/17/2017
Branch I
Operations Map
152,231
Field OPS Acres
5/15/2017 1000 Hrs



- Branch Break
- Division Break
- Other
- Aerial Hazard
- Camp
- Dip Site
- Drop Point
- Fire Origin
- Helibase
- Helispot
- Hot Spot
- Incident Command Post
- Mobile Weather Unit
- Pump
- Repeater
- Staging Area
- Water Source
- Structures
- 10 Mile Planning Area
- Uncontrolled Fire Edge
- Escape Route
- Completed Line
- Completed Dozer Line
- Completed Burnout
- Wildfire Daily Fire Perimeter
- Fire Access Road
- Shelters
- Canoe Trail
- Management Action Point
- Refuge Island
- Swamp Edge Break
- Mature Pine Stands
- Reserved Timberlands
- Bethesda State Forest (FL)
- Osceola/NL (USFS)
- Wilderness_Bndry
- ONWR Bndry
- Other Roads



Created: 5/17/2017 412hrs NAD83
 SA Red Team GIS

