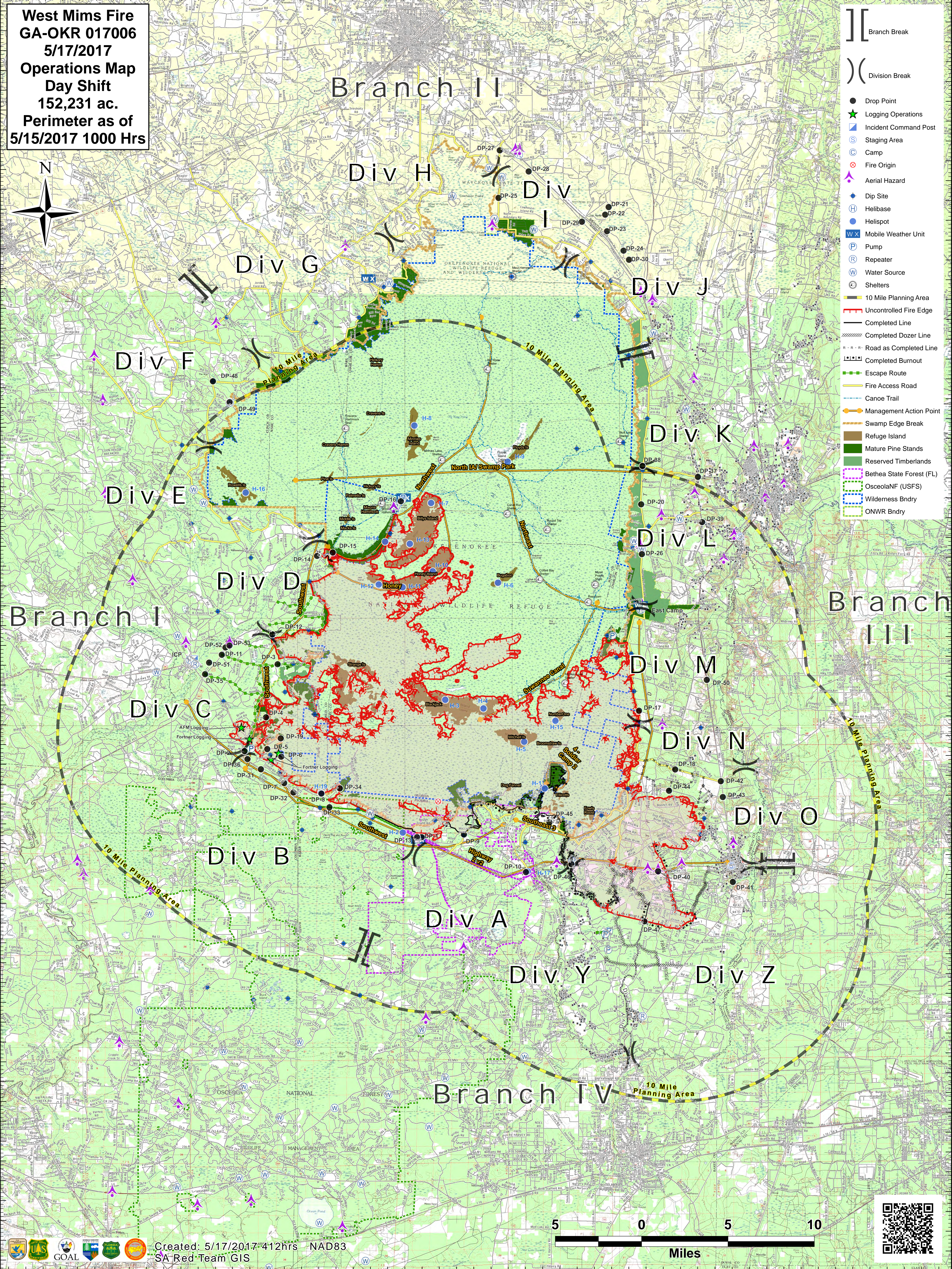


West Mims Fire
GA-OKR 017006
5/17/2017
Operations Map
Day Shift
152,231 ac.
Perimeter as of
5/15/2017 1000 Hrs



- [[Branch Break
-) Division Break
- Drop Point
- ★ Logging Operations
- ⓘ Incident Command Post
- Ⓢ Staging Area
- ⓐ Camp
- ⊗ Fire Origin
- ⚡ Aerial Hazard
- ◆ Dip Site
- Ⓜ Helibase
- Ⓜ Helispot
- Ⓜ Mobile Weather Unit
- Ⓜ Pump
- Ⓜ Repeater
- Ⓜ Water Source
- Ⓜ Shelters
- 10 Mile Planning Area
- Uncontrolled Fire Edge
- Completed Line
- Completed Dozer Line
- R-R-R Road as Completed Line
- Completed Burnout
- Escape Route
- Fire Access Road
- Canoe Trail
- Management Action Point
- Swamp Edge Break
- Refuge Island
- Mature Pine Stands
- Reserved Timberlands
- Bethea State Forest (FL)
- OsceolaNF (USFS)
- Wilderness Bndry
- ONWR Bndry



Created: 5/17/2017 4:12hrs NAD83
 SA Red Team GIS

