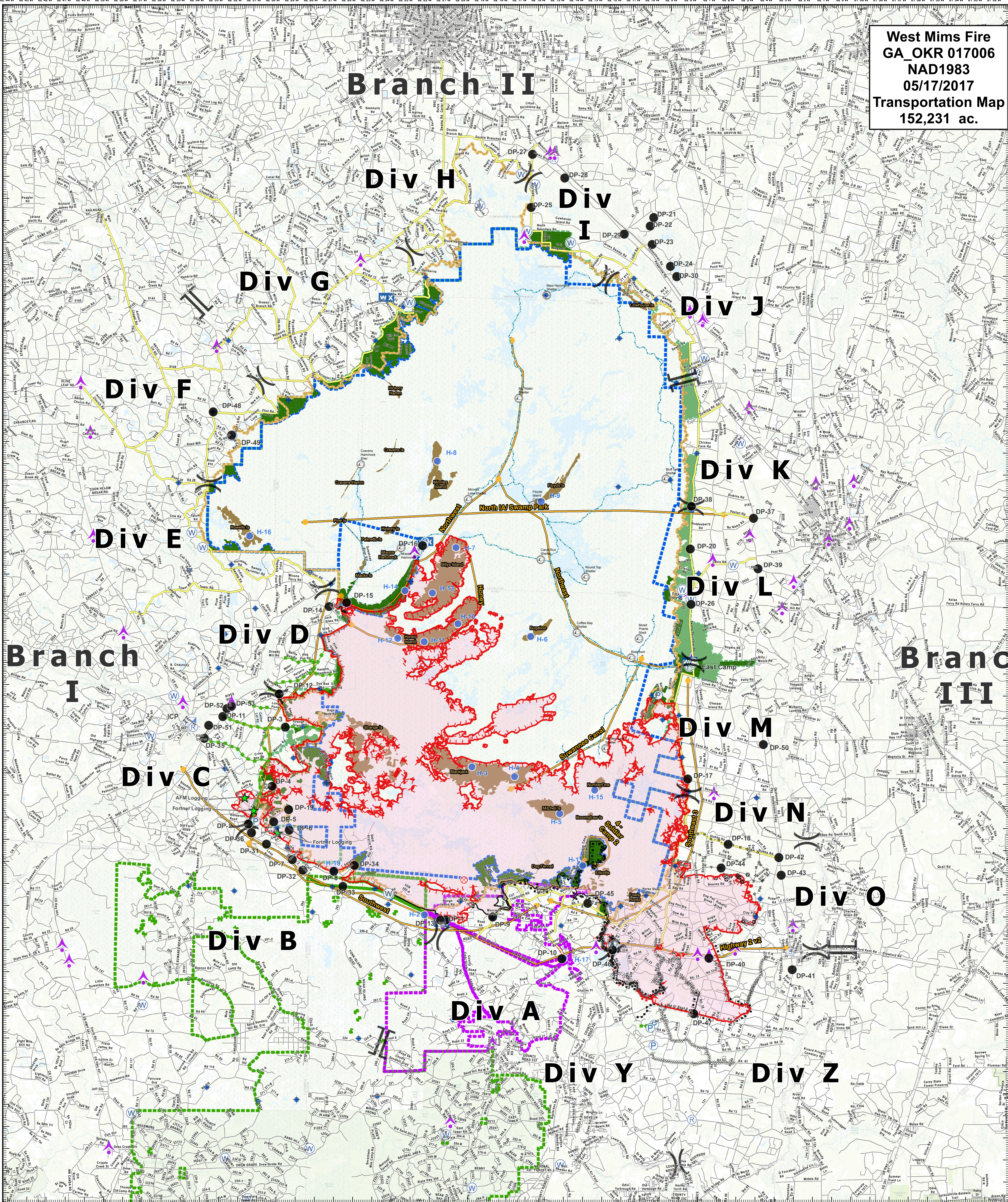
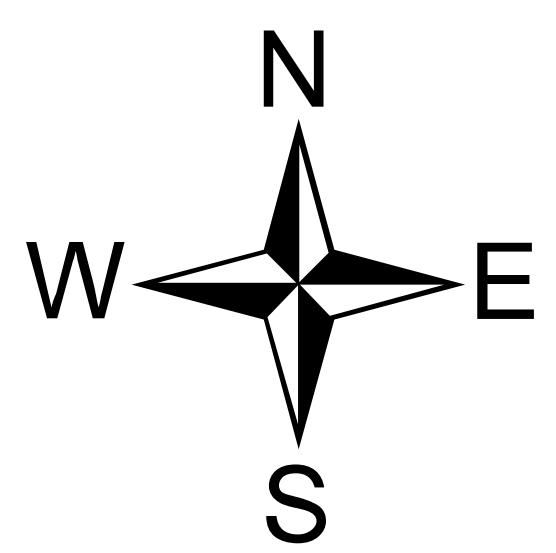


West Mims Fire
 GA_OKR 017006
 NAD1983
 05/17/2017
 Transportation Map
 152,231 ac.



- Drop Point
- Incident Command Post
- Ⓜ Helibase
- Uncontrolled Fire Edge
- Management Action Point
- Labels
- Ⓢ Staging Area
- Helispot
- Completed Line
- Swamp Edge Break
- Ⓜ Branch Break
- Ⓢ Camp
- Ⓜ Mobile Weather Unit
- Ⓢ Completed Dozer Line
- Other Roads
- Ⓜ Fire Origin
- Ⓢ Pump
- Road as Completed Line
- Wildfire Daily Fire Perimeter
- Ⓜ Aerial Hazard
- Ⓢ Repeater
- Active Burnout
- Refuge Island
- Ⓜ Dip Site
- Ⓢ Water Source
- Ⓢ Completed Burnout
- Mature Pine Stands
- Reserved Timberlands
- ★ Logging Operations
- Ⓢ Shelter
- Ⓢ Planned Secondary Line
- Bethea State Forest (FL)
- OsceolaNF (USFS)
- Wilderness Bndry
- ONWR Bndry
- Escape Route
- Fire Access Road
- Canoe Trail



Fire Perimeter as of
 5/15/17 1000
 Source: IR &
 Field Collection

