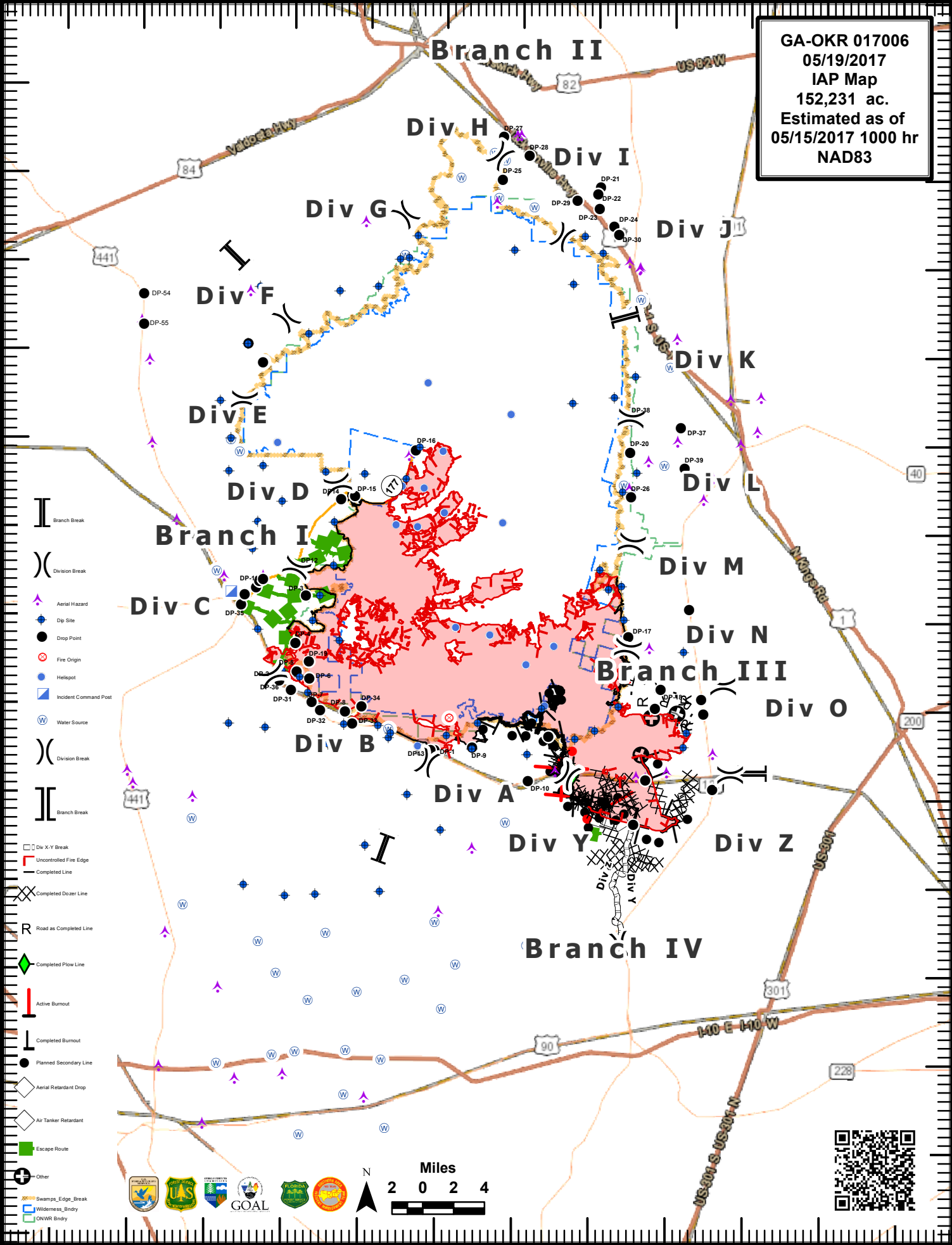


82°45'W 82°40'W 82°35'W 82°30'W 82°25'W 82°20'W 82°15'W 82°10'W 82°5'W 82°0'W 81°55'W 81°50'W

31°10'N 31°05'N 31°00'N 30°55'N 30°50'N 30°45'N 30°40'N 30°35'N 30°30'N 30°25'N 30°20'N 30°15'N 30°10'N 30°5'N

31°15'N 31°10'N 31°05'N 31°00'N 30°55'N 30°50'N 30°45'N 30°40'N 30°35'N 30°30'N 30°25'N 30°20'N 30°15'N 30°10'N 30°5'N

GA-OKR 017006
05/19/2017
IAP Map
152,231 ac.
Estimated as of
05/15/2017 1000 hr
NAD83



- Branch Break
- Division Break
- Aerial Hazard
- Dip Site
- Dimp Point
- Fire Origin
- Heliport
- Incident Command Post
- Water Source
- Division Break
- Branch Break
- Div X-Y Break
- Uncontrolled Fire Edge
- Completed Line
- Completed Dozer Line
- Road as Completed Line
- Completed Plow Line
- Active Burnout
- Completed Burnout
- Planned Secondary Line
- Aerial Retardant Drop
- Air Tanker Retardant
- Escape Route
- Other
- Swamps_Edge_Break
- Wilderness_Bndry
- ONWR Bndry

