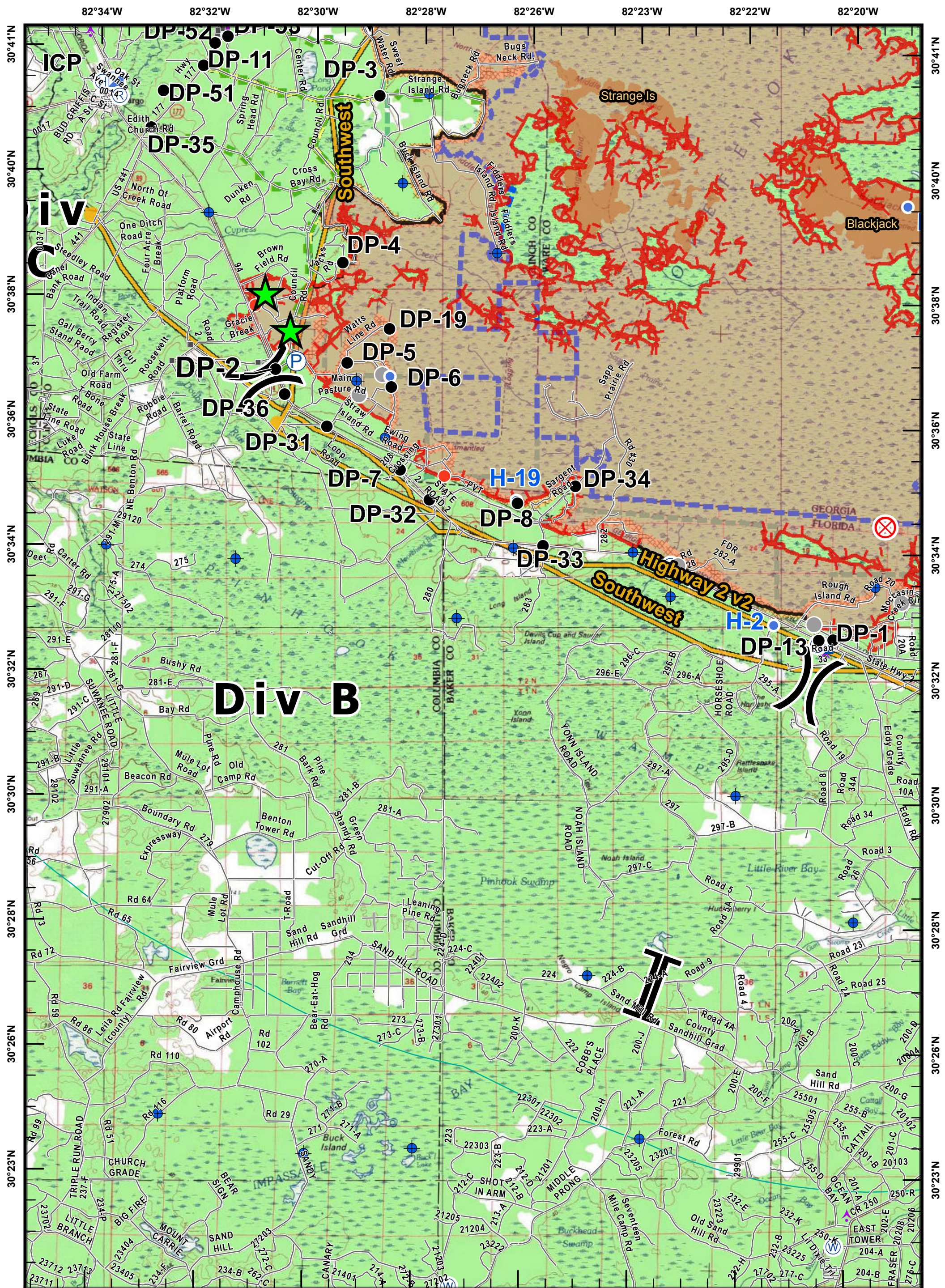


<ul style="list-style-type: none"> Aerial Hazard Dip Site Drop Point Fire Origin Helibase Helispot 	<ul style="list-style-type: none"> Camp Incident Command Post Structure Pump Repeater Water Source 	<ul style="list-style-type: none"> Staging Area Division Break Branch Break Uncontrolled Fire Edge Completed Line 	<ul style="list-style-type: none"> Completed Dozer Line Escape Route Swamp Edge Break Management Action Point Refuge Island Fire Access Road 		<p>West Mims Fire GA-OKR-017006 05/19/2017</p> <p>Page 1 IAP MapBook Estimated 5/15/2017 1000 Hrs 152,231 ac.</p>
--	--	---	--	--	--

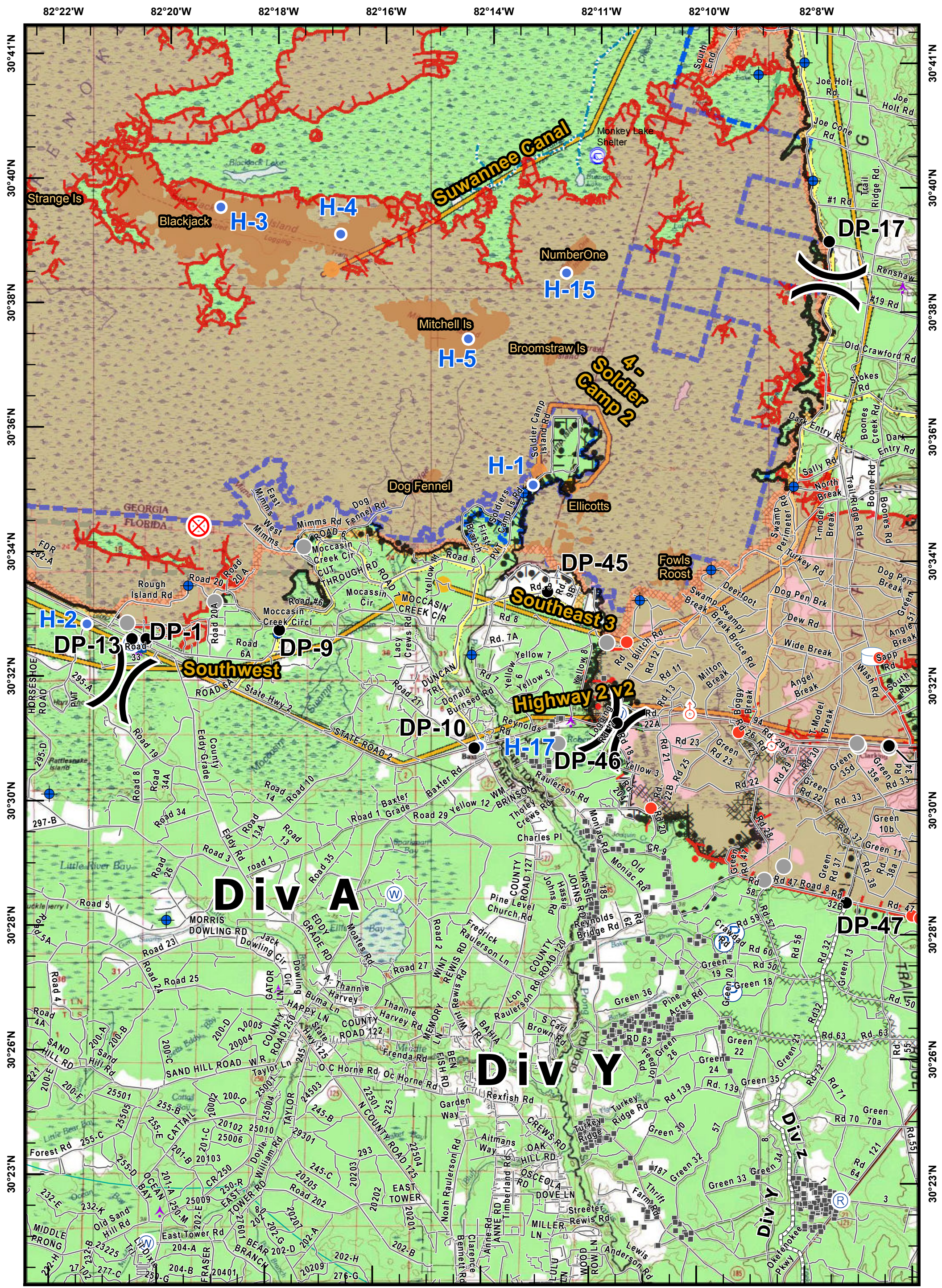


82°34'W	82°32'W	82°30'W	82°28'W	82°26'W	82°23'W	82°22'W	82°20'W
Aerial Hazard	Camp	Staging Area	Completed Dozer Line	Completed Burnout	Escape Route	Swamp Edge Break	Management Action Point
Dip Site	Incident Command Post	Division Break	Uncontrolled Fire Edge	Refuge Island	Fire Access Road		
Drop Point	Structure	Branch Break	Completed Line				
Fire Origin	Pump	Repeater	Water Source				
Helibase	Helispot						

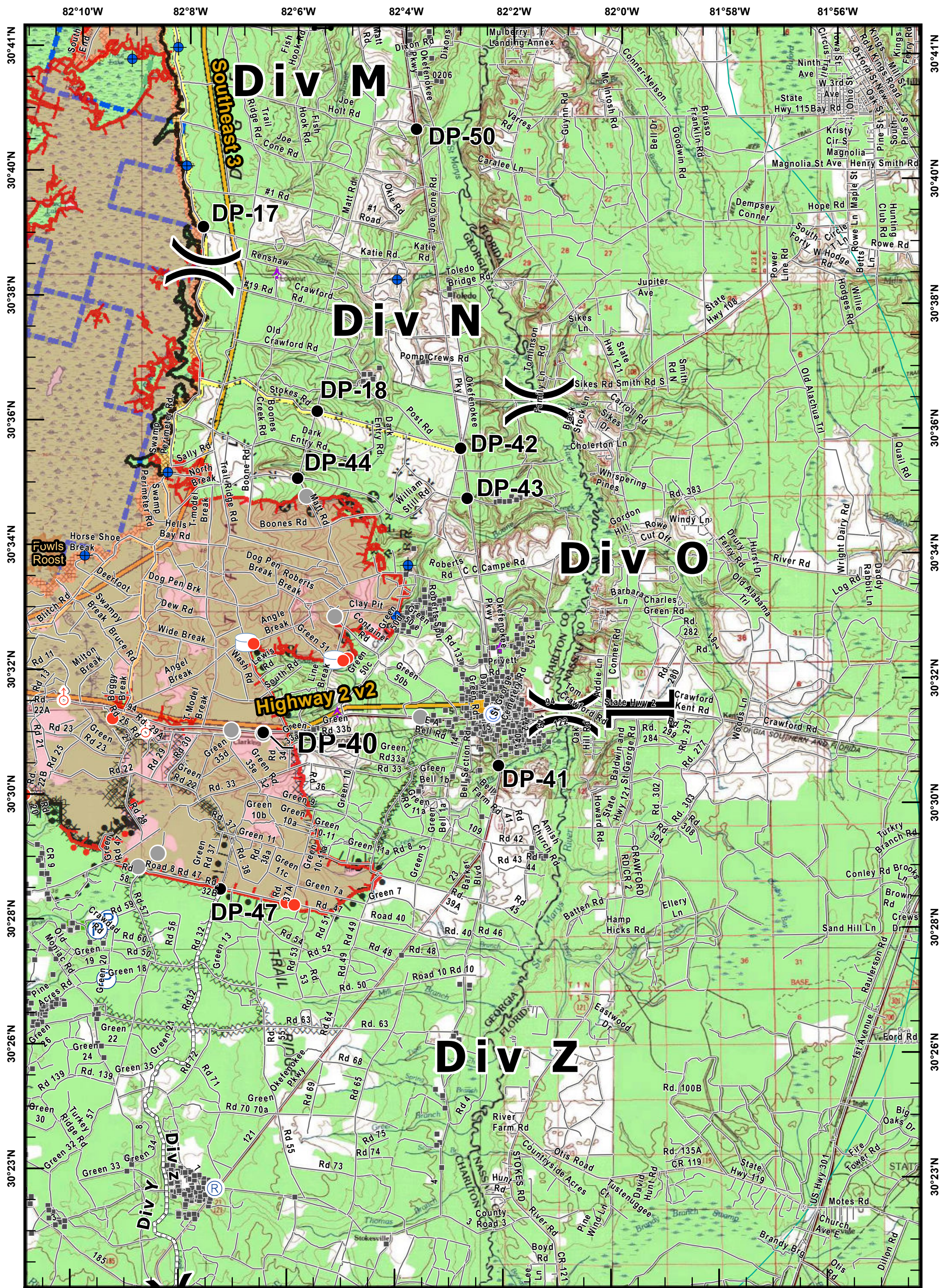
Created: 5/18/2017 1749hrs
SA Red Team GIS

West Mims Fire
GA-OKR-017006
05/19/2017

Page 2 IAP MapBook
Estimated 5/15/2017 1000 Hrs
152,231 ac.

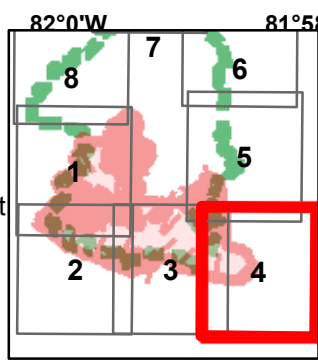


<ul style="list-style-type: none"> Aerial Hazard Dip Site Drop Point Fire Origin Helibase Helispot 	<ul style="list-style-type: none"> Camp Incident Command Post Structure Pump Repeater Water Source 	<ul style="list-style-type: none"> Staging Area Division Break Branch Break Uncontrolled Fire Edge Completed Line 	<ul style="list-style-type: none"> Completed Dozer Line Completed Burnout Escape Route Swamp Edge Break Management Action Point Refuge Island Fire Access Road 		<p>Scale: 0 to 2 Miles</p> <p>West Mims Fire GA-OKR-017006 05/19/2017</p> <p>Page 3 IAP MapBook Estimated 5/15/2017 1000 Hrs 152,231 ac.</p>
--	--	---	--	--	---



- 82°10'W
 - 82°8'W
 - 82°6'W
 - 82°4'W
 - 82°2'W
 - 82°0'W
 - 81°58'W
 - 81°56'W
- Aerial Hazard
 - Dip Site
 - Drop Point
 - Fire Origin
 - Helibase
 - Helispot
 - Camp
 - Incident Command Post
 - Structure
 - Pump
 - Repeater
 - Water Source
 - Staging Area
 - Division Break
 - Branch Break
 - Uncontrolled Fire Edge
 - Completed Line
 - Completed Dozer Line
 - Completed Burnout
 - Escape Route
 - Swamp Edge Break
 - Management Action Point
 - Refuge Island
 - Fire Access Road

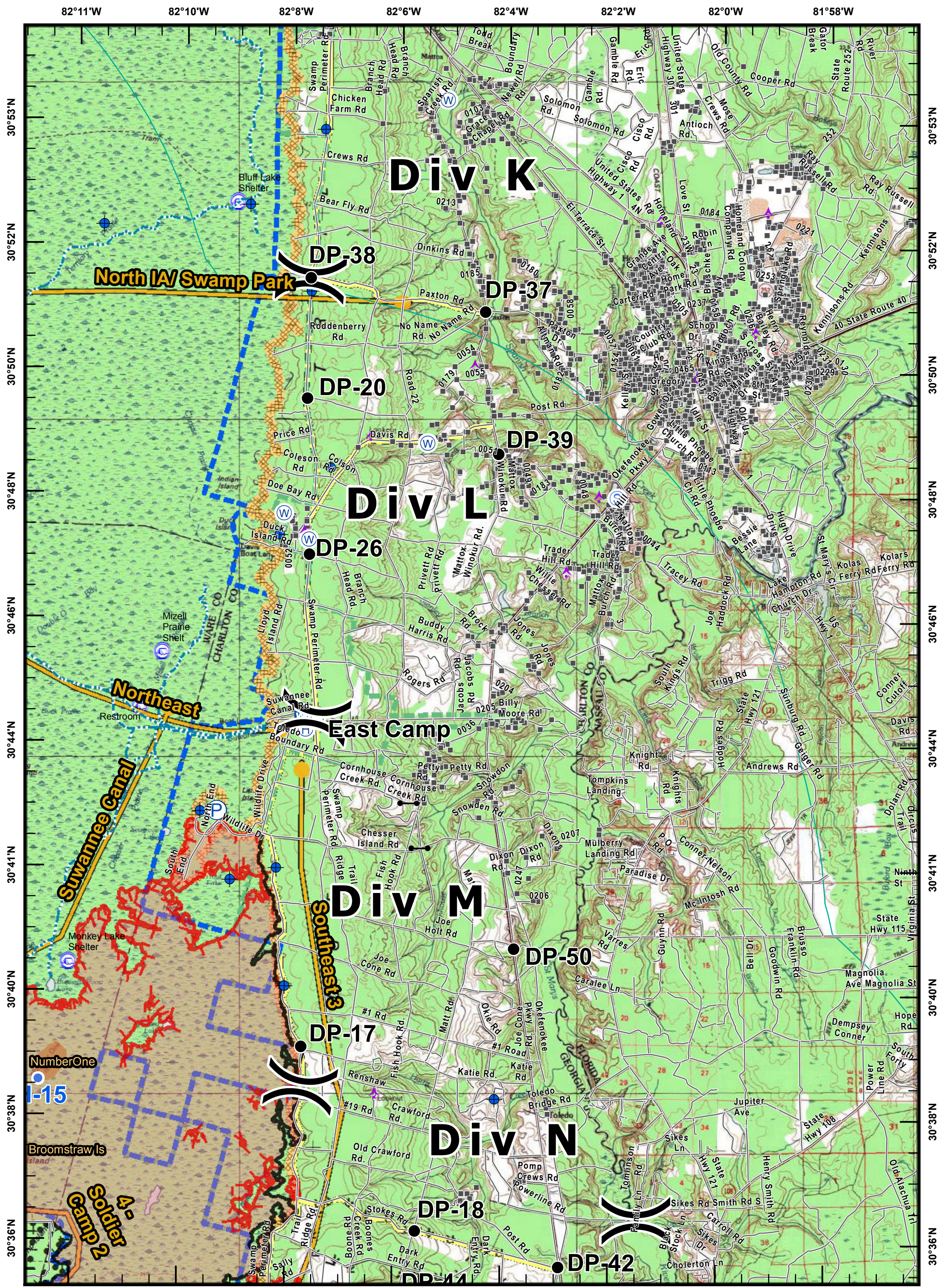
Created: 5/18/2017 1750hrs
SA Red Team GIS



0 1 2
Miles

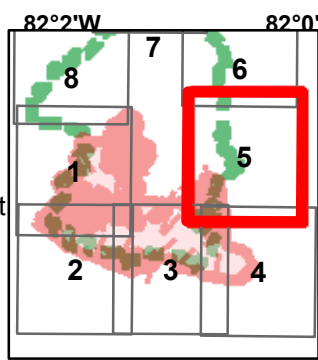
West Mims Fire
GA-OKR-017006
05/19/2017

Page 4 IAP MapBook
Estimated 5/15/2017 1000 Hrs
152,231 ac.



- Aerial Hazard
- Dip Site
- Drop Point
- Fire Origin
- Helibase
- Helispot
- Camp
- Incident Command Post
- Structure
- Pump
- Repeater
- Water Source
- Staging Area
- Division Break
- Branch Break
- Uncontrolled Fire Edge
- Completed Line
- Completed Dozer Line
- Completed Burnout
- Escape Route
- Swamp Edge Break
- Management Action Point
- Refuge Island
- Fire Access Road

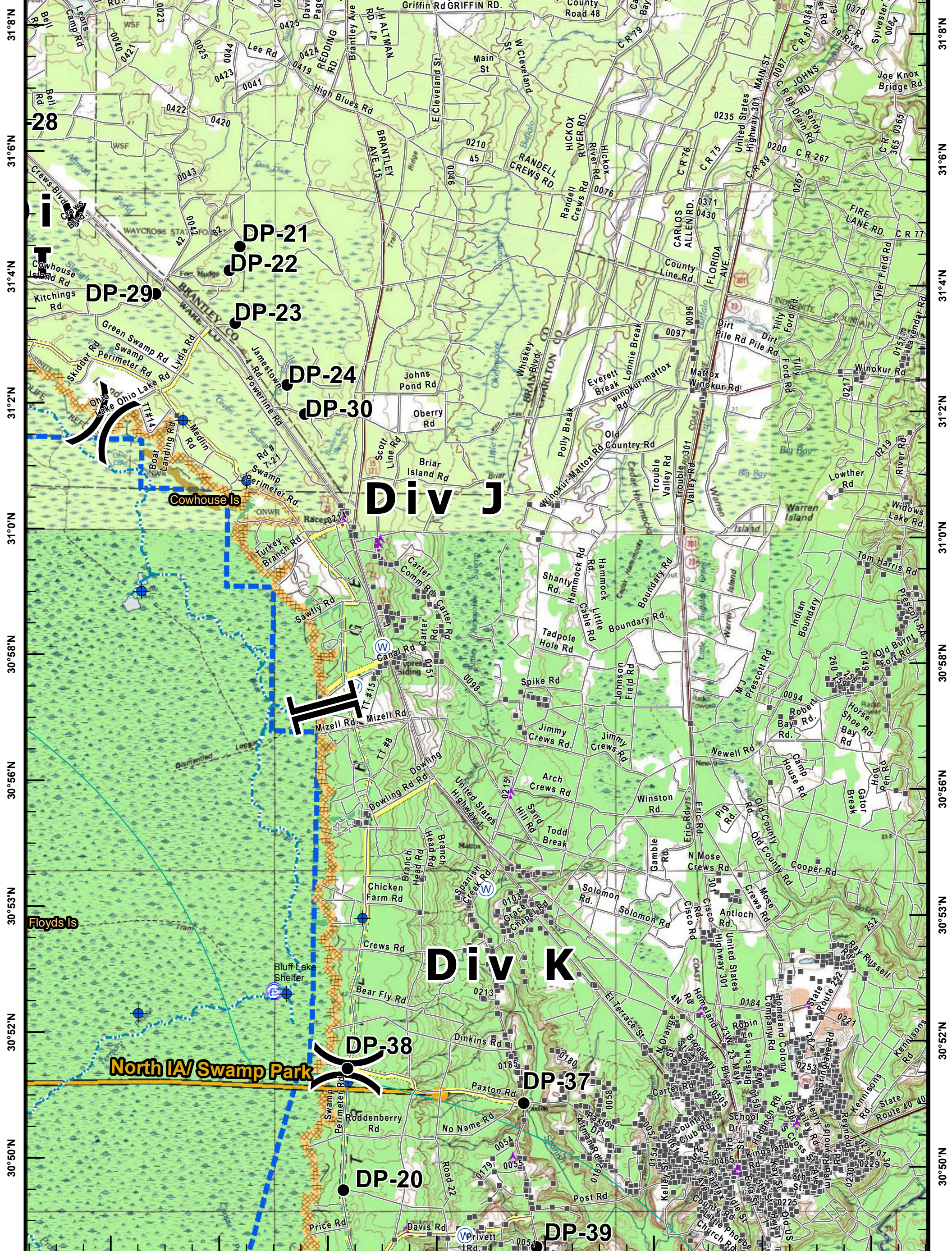
Created: 5/18/2017 1750hrs
SA Red Team GIS



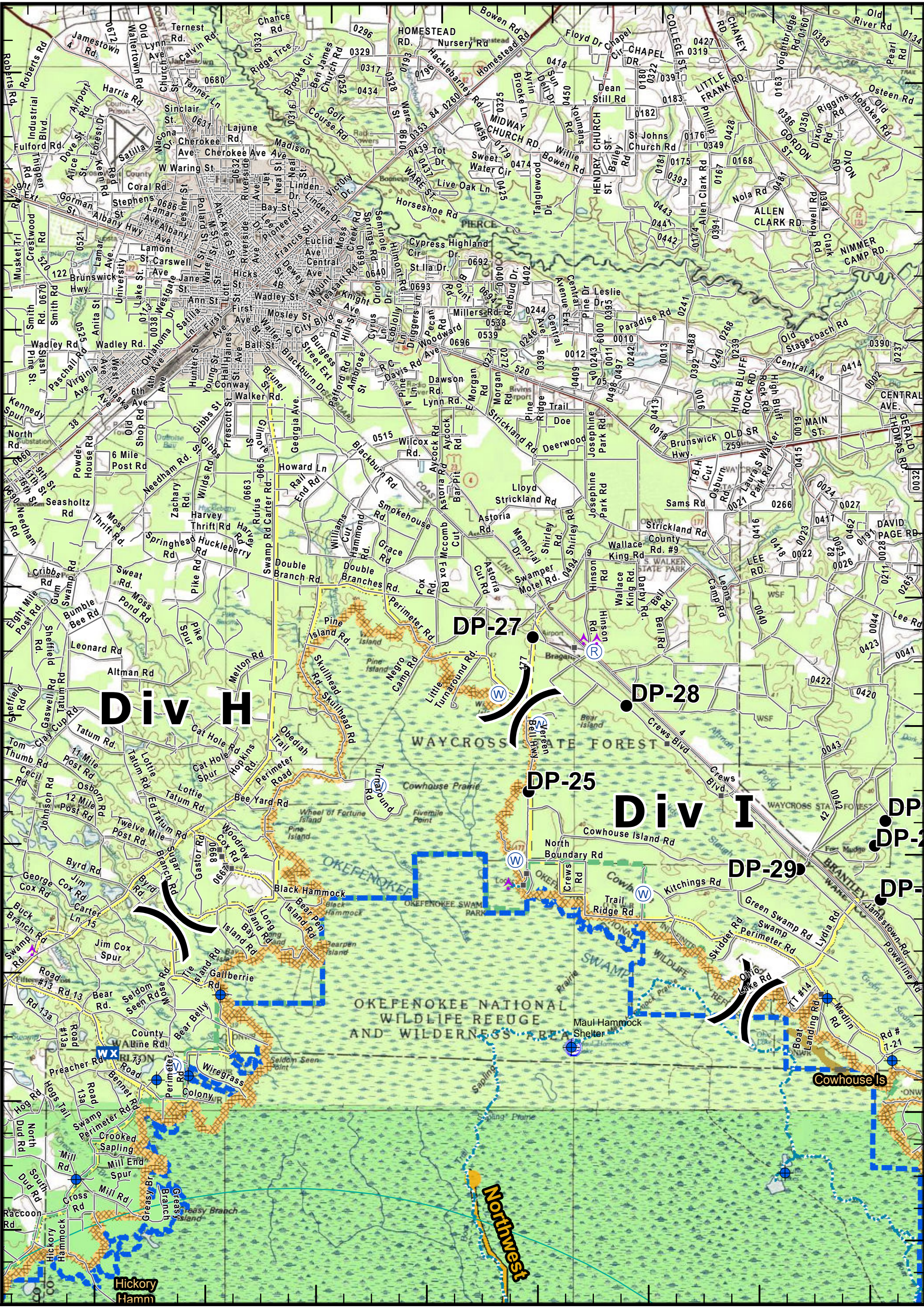
0 1 2 Miles

West Mims Fire
GA-OKR-017006
05/19/2017

Page 5 IAP MapBook
Estimated 5/15/2017 1000 Hrs
152,231 ac.



<ul style="list-style-type: none"> Aerial Hazard Dip Site Drop Point Fire Origin Helibase Helispot 	<ul style="list-style-type: none"> Camp Incident Command Post Structure Pump Repeater Water Source 	<ul style="list-style-type: none"> Staging Area Division Break Branch Break Uncontrolled Fire Edge Completed Line 	<ul style="list-style-type: none"> Completed Dozer Line Completed Burnout Escape Route Swamp Edge Break Management Action Point Refuge Island Fire Access Road 	<p>82°11'W 82°10'W 82°8'W 82°6'W 82°4'W 82°2'W 82°0'W 81°58'W</p> <p>Miles</p> <p>West Mims Fire GA-OKR-017006 05/19/2017</p> <p>Page 6 IAP MapBook Estimated 5/15/2017 1000 Hrs 152,231 ac.</p>
--	--	---	--	---



Div H

Div I

DP-27

DP-28

DP-25

DP-29

DP-30

DP-31

OKEFENOKEE NATIONAL WILDLIFE REFUGE AND WILDERNESS AREA

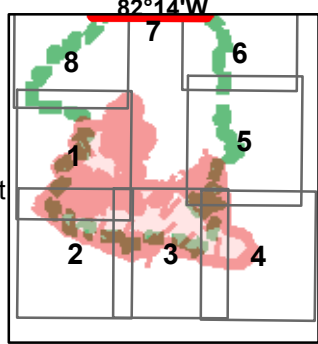
WAYCROSS STATE FOREST

Cowhouse Is

Hickory Hamm

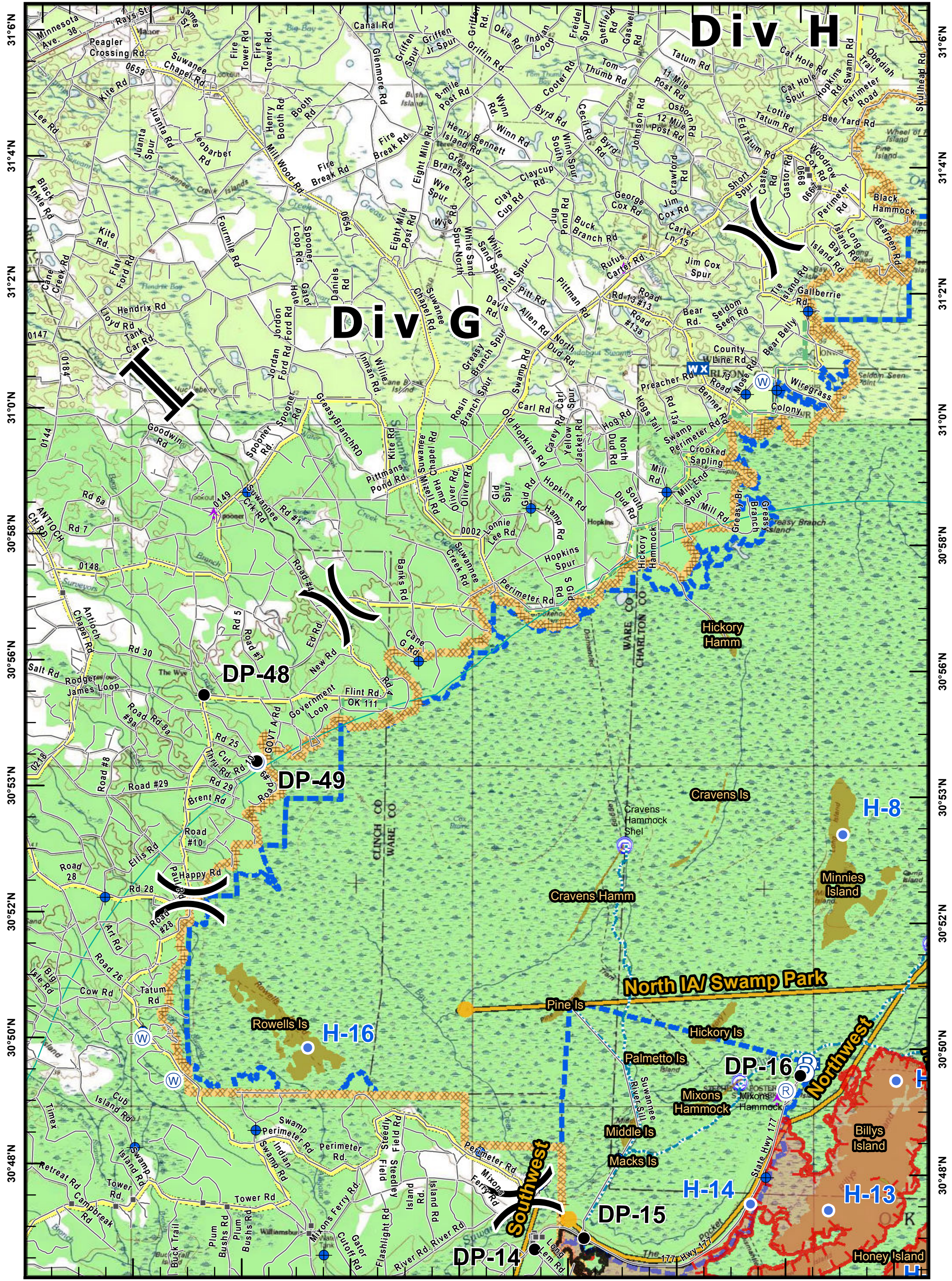
Northwest

- ✦ Aerial Hazard
- Dip Site
- Drop Point
- ⊗ Fire Origin
- ⊕ Helibase
- Helispot
- Ⓢ Camp
- ▣ Incident Command Post
- ◆ Structure
- Ⓟ Pump
- Ⓡ Repeater
- Ⓜ Water Source
- Ⓢ Staging Area
-) Division Break
-] Branch Break
- Uncontrolled Fire Edge
- Completed Line
- ▨ Completed Dozer Line
- Completed Burnout
- Escape Route
- ▨ Swamp Edge Break
- ▨ Management Action Point
- ▨ Refuge Island
- Fire Access Road



West Mims Fire
GA-OKR-017006
05/19/2017

Page 7 IAP MapBook
 Estimated 5/15/2017 1000 Hrs
 152,231 ac.



<ul style="list-style-type: none"> Aerial Hazard Dip Site Drop Point Fire Origin Helibase Helispot 	<ul style="list-style-type: none"> Camp Incident Command Post Structure Pump Repeater Water Source 	<ul style="list-style-type: none"> Staging Area Division Break Branch Break Uncontrolled Fire Edge Completed Line 	<ul style="list-style-type: none"> Completed Dozer Line Completed Burnout Escape Route Swamp Edge Break Management Action Point Refuge Island Fire Access Road 		<p>West Mims Fire GA-OKR-017006 05/19/2017</p> <p>Page 8 IAP MapBook Estimated 5/15/2017 1000 Hrs 152,231 ac.</p>
--	--	---	--	--	--