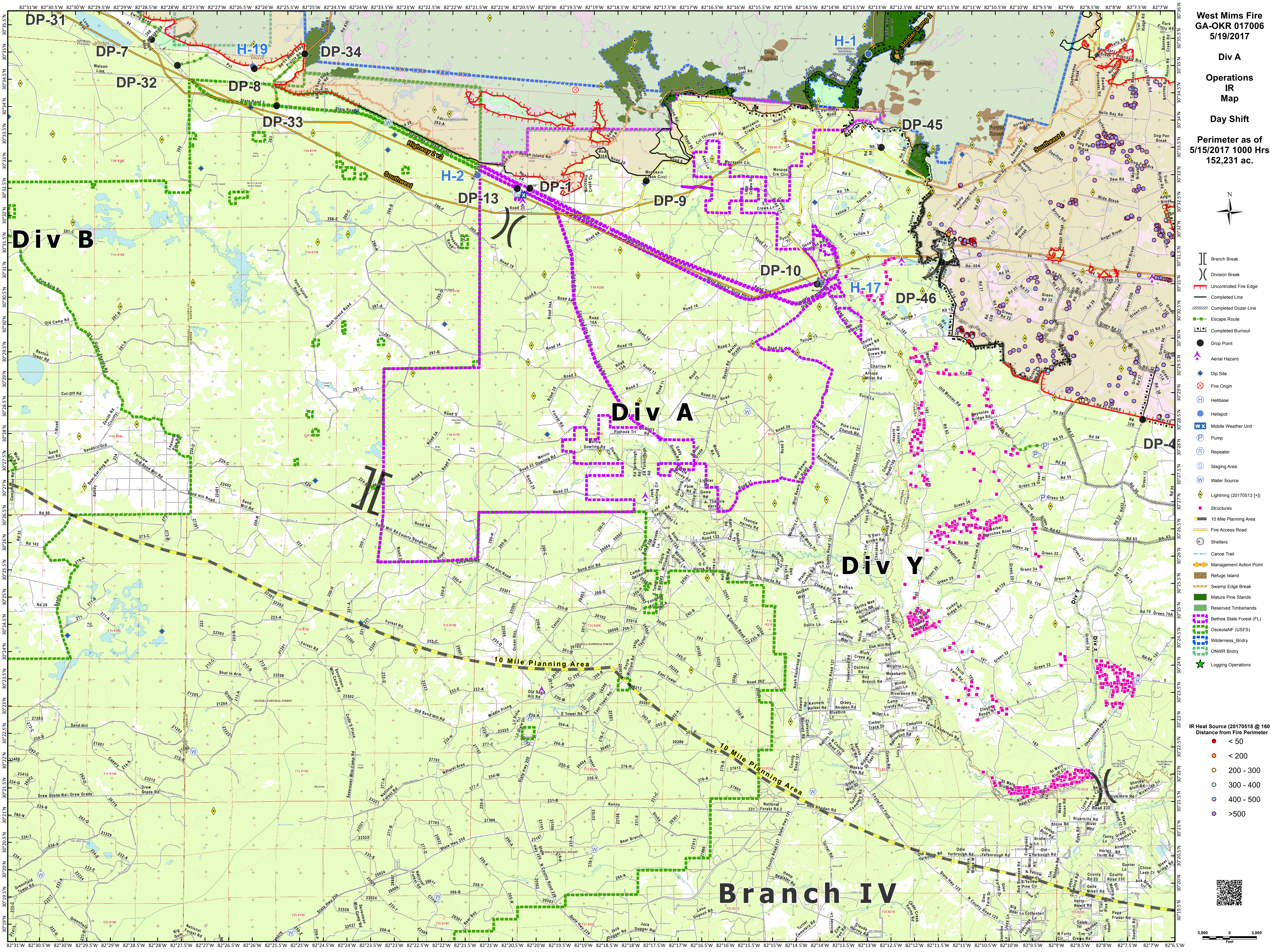


- Branch Break
- Division Break
- Uncontrolled Fire Edge
- Completed Line
- Completed Dozer Line
- Escape Route
- Completed Burnout
- Drop Point
- Aerial Hazard
- Dip Site
- Fire Origin
- Helibase
- Helispot
- Mobile Weather Unit
- Pump
- Repeater
- Staging Area
- Water Source
- Lightning (20170513 (+))
- Structures
- 10 Mile Planning Area
- Fire Access Road
- Shelters
- Canoe Trail
- Management Action Point
- Refuge Island
- Swamp Edge Break
- Mature Pine Stands
- Reserved Timberlands
- Bethesda State Forest (FL)
- OsceolaNF (USFS)
- Wilderness\_Bndry
- ONWR Bndry
- Logging Operations

- IR Heat Source (20170518 @ 1600)  
Distance from Fire Perimeter
- < 50
  - < 200
  - 200 - 300
  - 300 - 400
  - 400 - 500
  - >500



# Branch IV