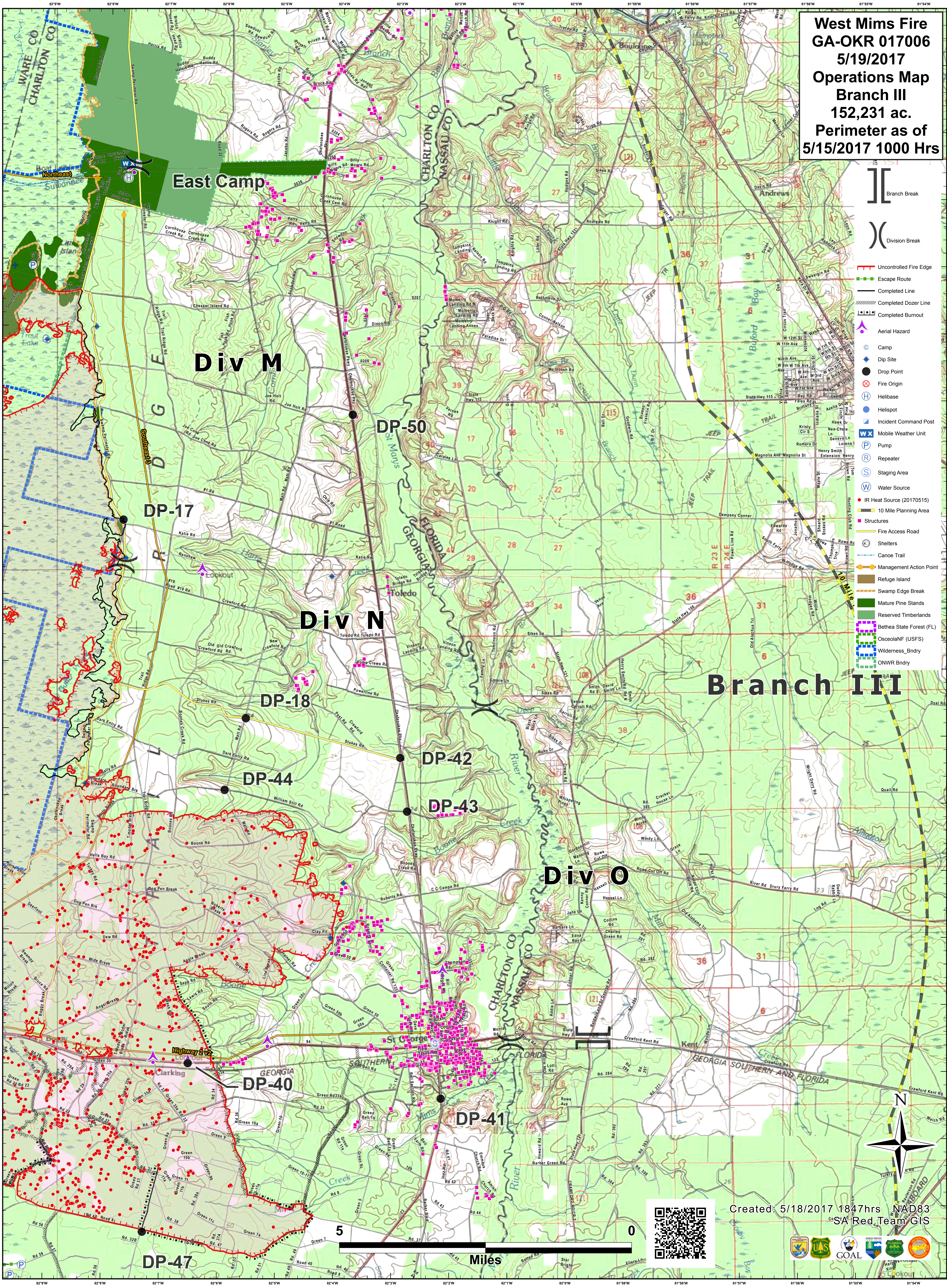
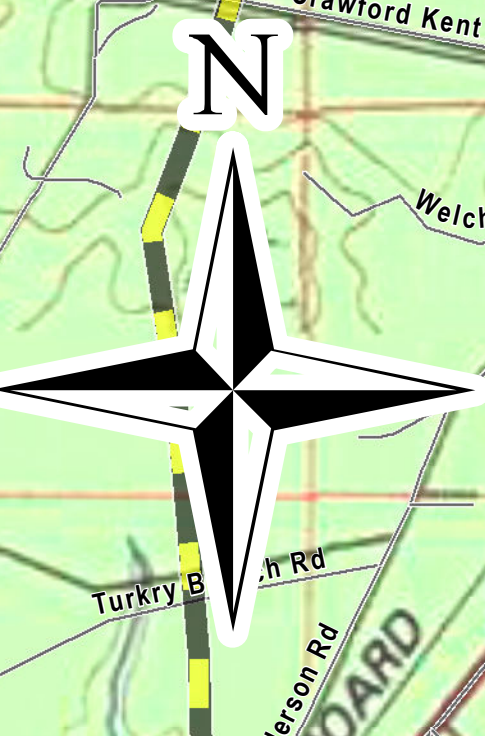


**West Mims Fire**  
**GA-OKR 017006**  
**5/19/2017**  
**Operations Map**  
**Branch III**  
**152,231 ac.**  
**Perimeter as of**  
**5/15/2017 1000 Hrs**



- Branch Break
- Division Break
- Uncontrolled Fire Edge
- Escape Route
- Completed Line
- Completed Dozer Line
- Completed Burnout
- Aerial Hazard
- Camp
- Dip Site
- Drop Point
- Fire Origin
- Helibase
- Helispot
- Incident Command Post
- Mobile Weather Unit
- Pump
- Repeater
- Staging Area
- Water Source
- IR Heat Source (20170515)
- 10 Mile Planning Area
- Structure
- Shelters
- Canoe Trail
- Management Action Point
- Refuge Island
- Swamp Edge Break
- Mature Pine Stands
- Reserved Timberlands
- Bethae State Forest (FL)
- OsceolaNF (USFS)
- Wilderness\_Bndry
- ONWR Bndry

**Branch III**



Created: 5/18/2017 1847hrs NAD83  
 SA Red Team GIS



5 Miles

DP-47

DP-41

DP-43

DP-44

DP-42

DP-18

DP-17

DP-50

East Camp

Div M

Div N

Div O

WARE CO  
 CHARLTON CO

CHARLTON CO  
 NASSAU CO

CHARLTON CO  
 NASSAU CO  
 FLORIDA

GEORGIA SOUTHERN AND FLORIDA