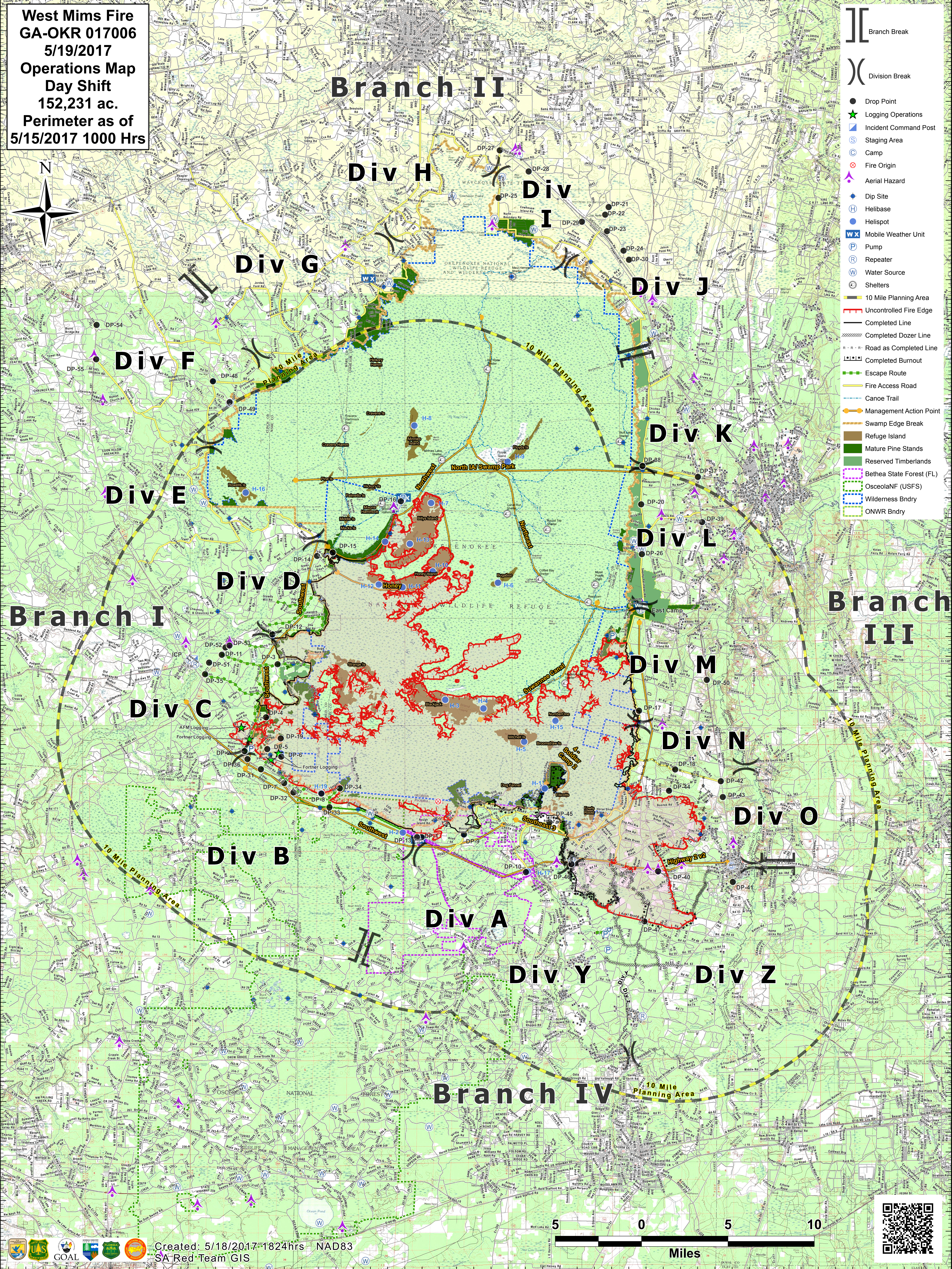


West Mims Fire
GA-OKR 017006
5/19/2017
Operations Map
Day Shift
152,231 ac.
Perimeter as of
5/15/2017 1000 Hrs



- Branch Break
- Division Break
- Drop Point
- Logging Operations
- Incident Command Post
- Staging Area
- Camp
- Fire Origin
- Aerial Hazard
- Dip Site
- Helibase
- Helispot
- Mobile Weather Unit
- Pump
- Repeater
- Water Source
- Shelters
- 10 Mile Planning Area
- Uncontrolled Fire Edge
- Completed Line
- Completed Dozer Line
- Road as Completed Line
- Completed Bypass
- Escape Route
- Fire Access Road
- Canoe Trail
- Management Action Point
- Swamp Edge Break
- Refuge Island
- Mature Pine Stands
- Reserved Timberlands
- Bethesda State Forest (FL)
- OsceolaNF (USFS)
- Wilderness Bndry
- ONWR Bndry



Created: 5/18/2017 1824hrs NAD83
 SA Red-Team GIS

