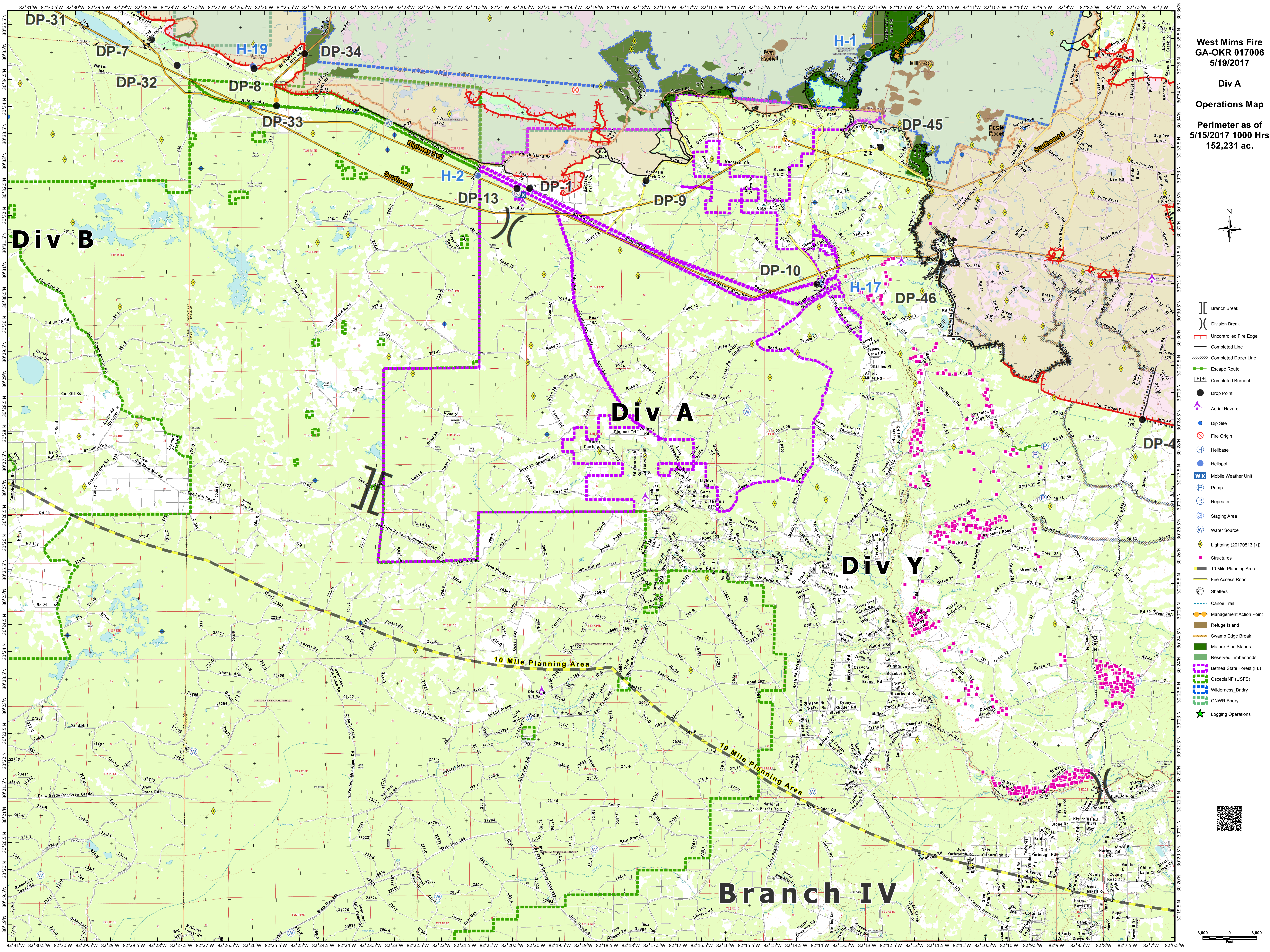


- Branch Break
- Division Break
- Uncontrolled Fire Edge
- Completed Line
- Completed Dozer Line
- Escape Route
- Completed Burnout
- Drop Point
- Aerial Hazard
- Dip Site
- Fire Origin
- Helibase
- Helispot
- Mobile Weather Unit
- Pump
- Repeater
- Staging Area
- Water Source
- Lightning (20170513 (+))
- Structures
- 10 Mile Planning Area
- Fire Access Road
- Shelters
- Canoe Trail
- Management Action Point
- Refuge Island
- Swamp Edge Break
- Mature Pine Stands
- Reserved Timberlands
- Bethesda State Forest (FL)
- OsceolaNF (USFS)
- Wilderness_Bndry
- ONWR Bndry
- Logging Operations



82°31'W 82°30.5'W 82°30'W 82°29.5'W 82°29'W 82°28.5'W 82°28'W 82°27.5'W 82°27'W 82°26.5'W 82°26'W 82°25.5'W 82°25'W 82°24.5'W 82°24'W 82°23.5'W 82°23'W 82°22.5'W 82°22'W 82°21.5'W 82°21'W 82°20.5'W 82°20'W 82°19.5'W 82°19'W 82°18.5'W 82°18'W 82°17.5'W 82°17'W 82°16.5'W 82°16'W 82°15.5'W 82°15'W 82°14.5'W 82°14'W 82°13.5'W 82°13'W 82°12.5'W 82°12'W 82°11.5'W 82°11'W 82°10.5'W 82°10'W 82°9.5'W 82°9'W 82°8.5'W 82°8'W 82°7.5'W 82°7'W

30°35.5'N 30°35'N 30°34.5'N 30°34'N 30°33.5'N 30°33'N 30°32.5'N 30°32'N 30°31.5'N 30°31'N 30°30.5'N 30°30'N 30°29.5'N 30°29'N 30°28.5'N 30°28'N 30°27.5'N 30°27'N 30°26.5'N 30°26'N 30°25.5'N 30°25'N 30°24.5'N 30°24'N 30°23.5'N 30°23'N 30°22.5'N 30°22'N 30°21.5'N 30°21'N 30°20.5'N 30°20'N 30°19.5'N 30°19'N 30°18.5'N 30°18'N 30°17.5'N 30°17'N 30°16.5'N 30°16'N 30°15.5'N 30°15'N 30°14.5'N 30°14'N 30°13.5'N 30°13'N 30°12.5'N 30°12'N 30°11.5'N 30°11'N 30°10.5'N 30°10'N 30°9.5'N 30°9'N 30°8.5'N 30°8'N 30°7.5'N 30°7'N