

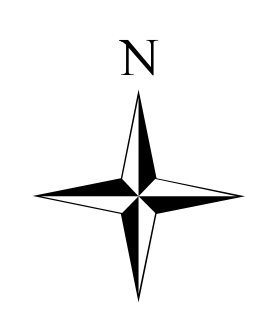
**Div O**

**Div Y**

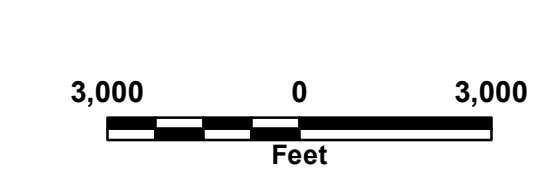
**Div Z**

**Branch IV**

- Branch Break
- Completed Line
- Completed Dozer Line
- Road as Completed Line
- Escape Route
- Completed Burnout
- Drop Point
- Aerial Hazard
- Dip Site
- Fire Origin
- Helibase
- Helispot
- Mobile Weather Unit
- Pump
- Repeater
- Staging Area
- Water Source
- Lightning 20170513 (+)
- Structures
- 10 Mile Planning Area
- Fire Access Road
- Shelters
- Logging Operations
- Canoe Trail
- Management Action Point
- Swamp Edge Break
- Refuge Island
- Mature Pine Stands
- Reserved Timberlands
- Bethea State Forest (FL)
- OsceolaNF (USFS)
- Wilderness\_Bndry
- ONWR Bndry



152,231 ac.



Perimeter as of  
5/15/2017 1000 Hrs

**West Mims Fire**  
**GA-OKR 017006**  
**5/19/2017**

**Div Y / Z**  
**Operations Map**