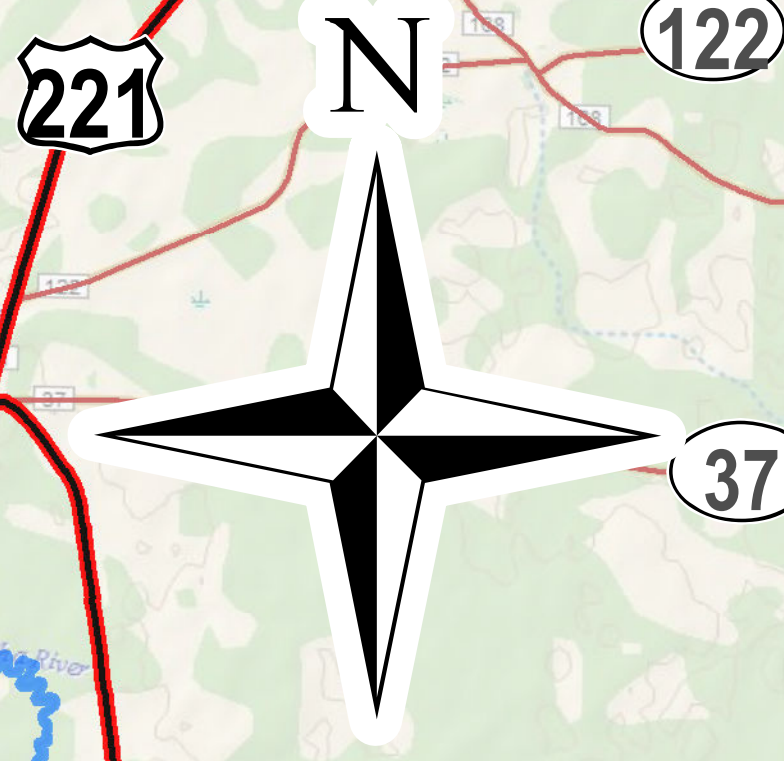
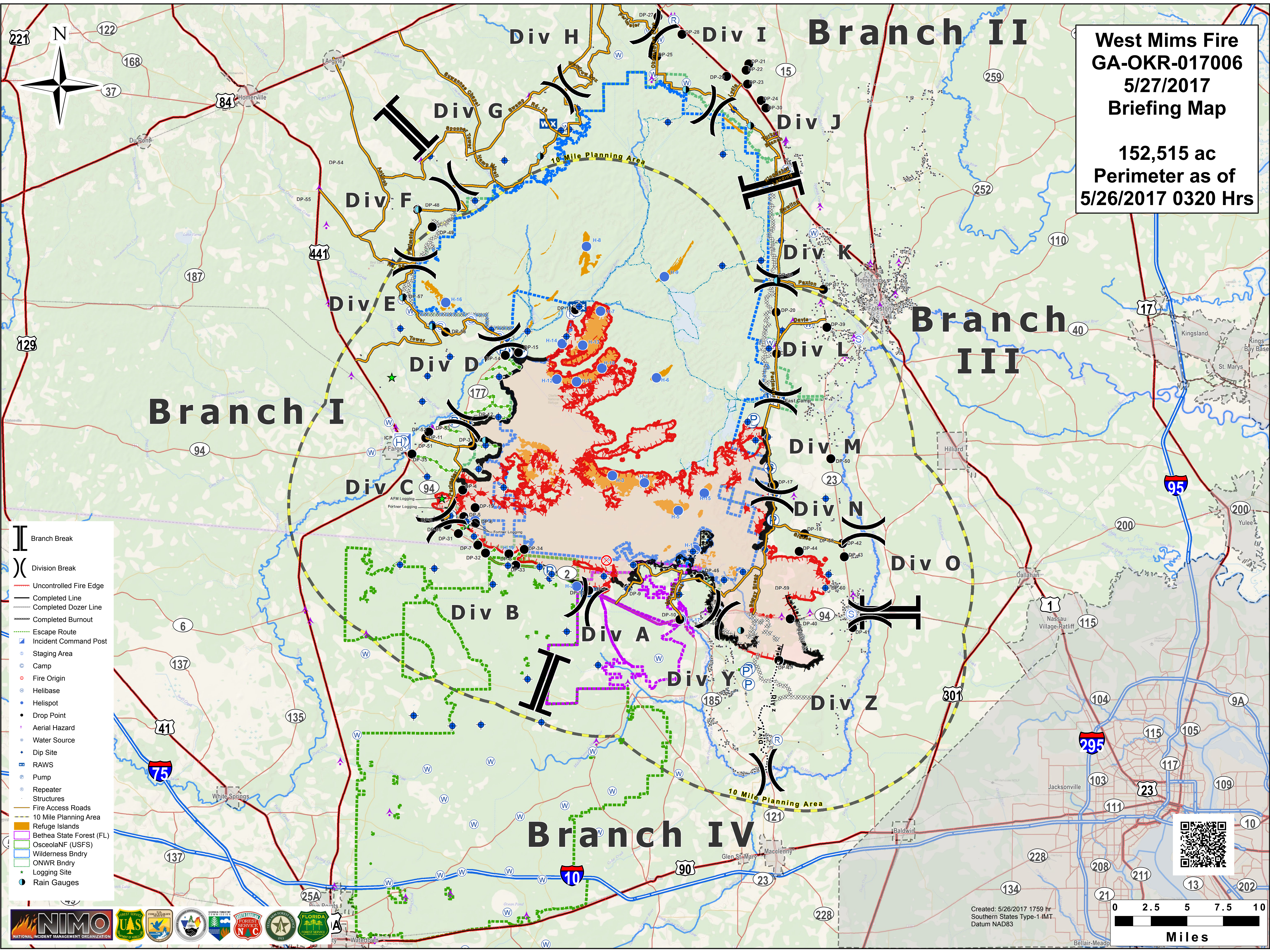


West Mims Fire
GA-OKR-017006
5/27/2017
Briefing Map

152,515 ac
Perimeter as of
5/26/2017 0320 Hrs



- Branch Break
- Division Break
- Uncontrolled Fire Edge
- Completed Line
- Completed Dozer Line
- Completed Burnout
- Escape Route
- Incident Command Post
- Staging Area
- Camp
- Fire Origin
- Helibase
- Helispot
- Drop Point
- Aerial Hazard
- Water Source
- Dip Site
- RAWS
- Pump
- Repeater Structures
- Fire Access Roads
- 10 Mile Planning Area
- Refuge Islands
- Bethea State Forest (FL)
- OsceolaNF (USFS)
- Wilderness Bndry
- ONWR Bndry
- Logging Site
- Rain Gauges



Created: 5/26/2017 1759 hr
 Southern States Type-1 IMT
 Datum NAD83

0 2.5 5 7.5 10
Miles