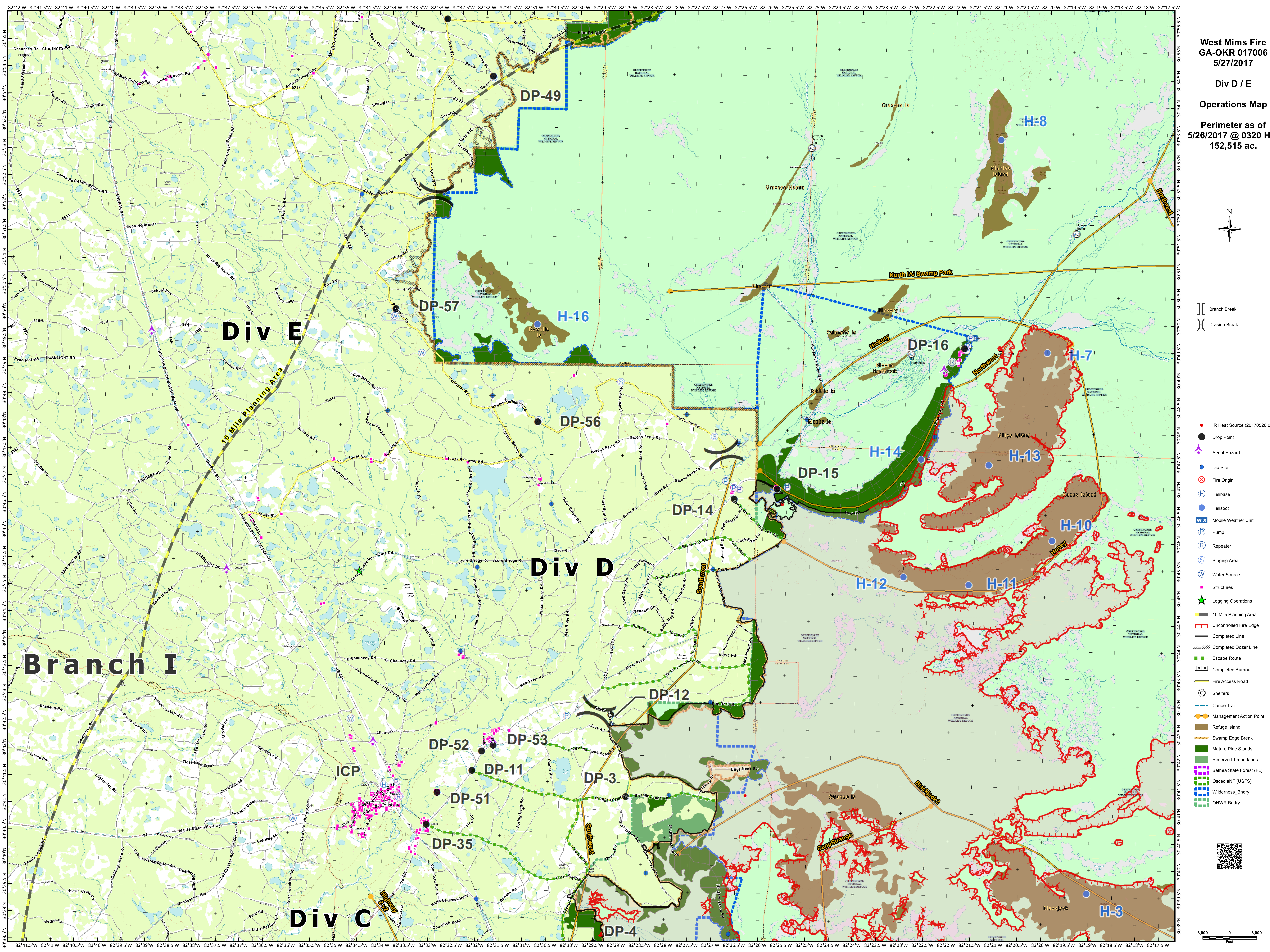


- IR Heat Source (20170526 0320)
- Drop Point
- ▲ Aerial Hazard
- ◆ Dip Site
- ⊗ Fire Origin
- ⊕ Helibase
- Helispot
- WX Mobile Weather Unit
- P Pump
- R Repeater
- S Staging Area
- W Water Source
- Structures
- ★ Logging Operations
- 10 Mile Planning Area
- Uncontrolled Fire Edge
- Completed Line
- Completed Dozer Line
- Escape Route
- Completed Burnout
- Fire Access Road
- Shelters
- Canoe Trail
- Management Action Point
- Refuge Island
- Swamp Edge Break
- Mature Pine Stands
- Reserved Timberlands
- Bethesda State Forest (FL)
- OsceolaNF (USFS)
- Wilderness_Bndry
- ONWR Bndry



Div E

Div D

Branch I

Div C

10 Mile Planning Area

DP-49

DP-57

H-16

DP-56

DP-16

H-7

DP-15

H-14

H-13

H-10

H-12

H-11

DP-14

DP-12

DP-52

DP-53

DP-11

DP-3

DP-51

DP-35

DP-4

ICP