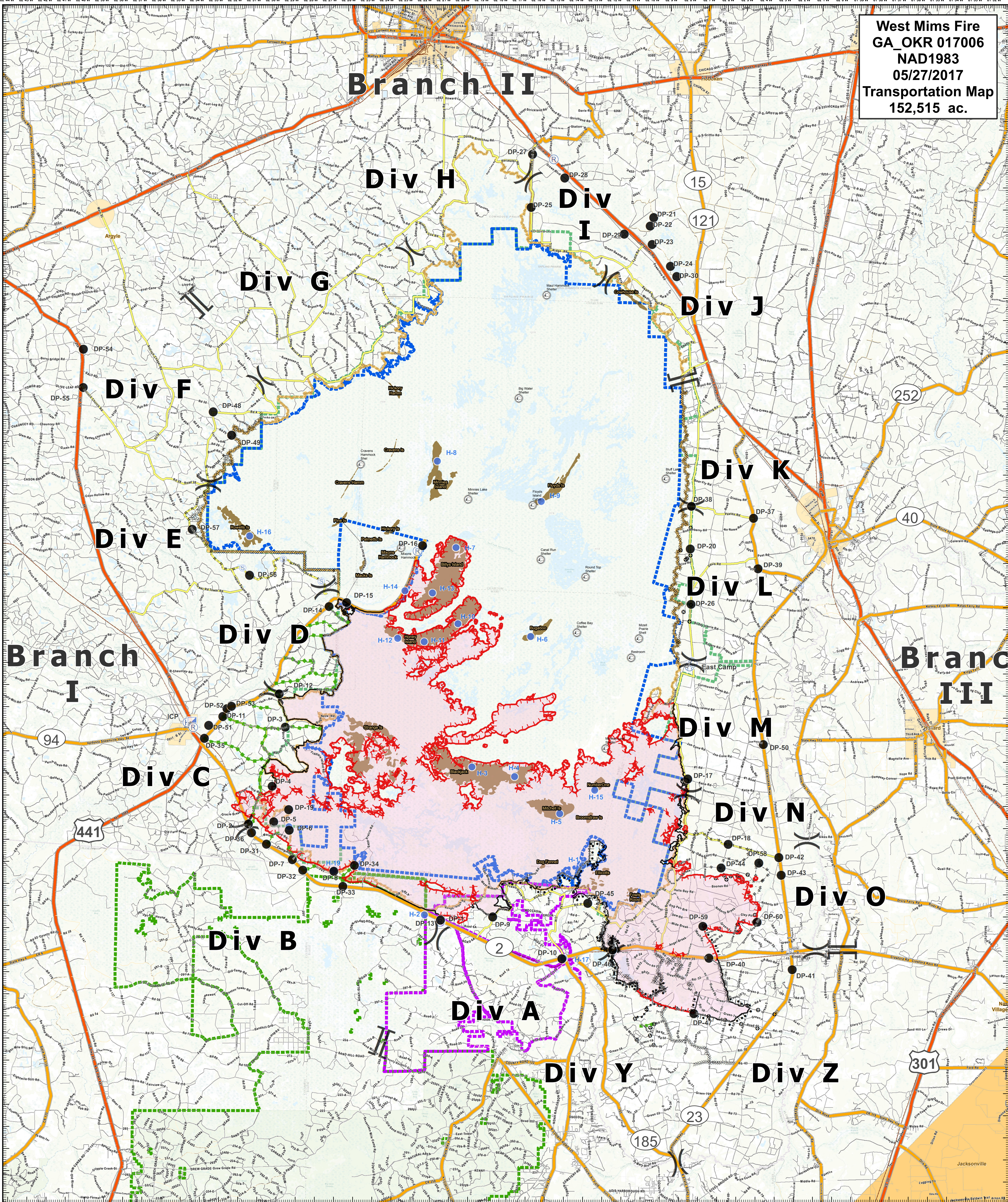
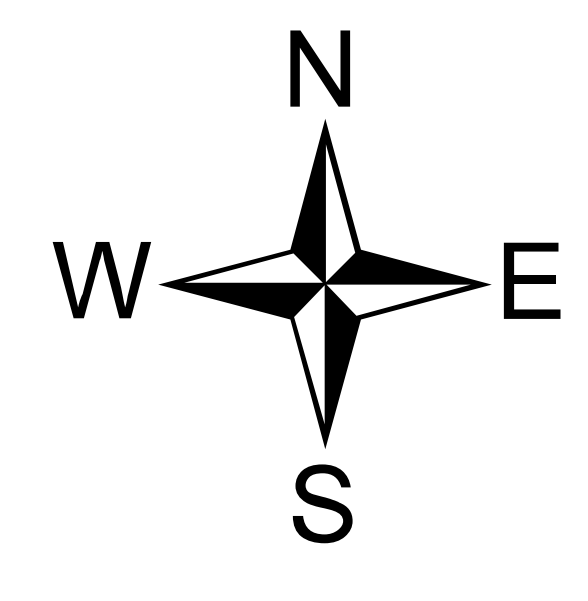


West Mims Fire  
 GA\_OKR 017006  
 NAD1983  
 05/27/2017  
 Transportation Map  
 152,515 ac.



- Drop Point
- Staging Area
- Camp
- Helibase
- Helispot
- Repeater
- || Branch Break
- ) Division Break
- Incident Command Post
- Uncontrolled Fire Edge
- Completed Line
- Completed Dozer Line
- Road as Completed Line
- Completed Burnout
- Planned Secondary Line
- Escape Route
- Other
- Wildfire Daily Fire Perimeter
- Fire Access Road
- Refuge Island
- Swamp Edge Break
- Bethel State Forest (FL)
- Ocala/NF (USFS)
- Wilderness Bndry
- ONWR Bndry
- Other Roads
- Highway
- Major Road
- Local Road
- Minor Road
- Shelters



Fire Perimeter as of  
 5/26/2017 @ 0320  
 Source: IR &  
 Field Collection

