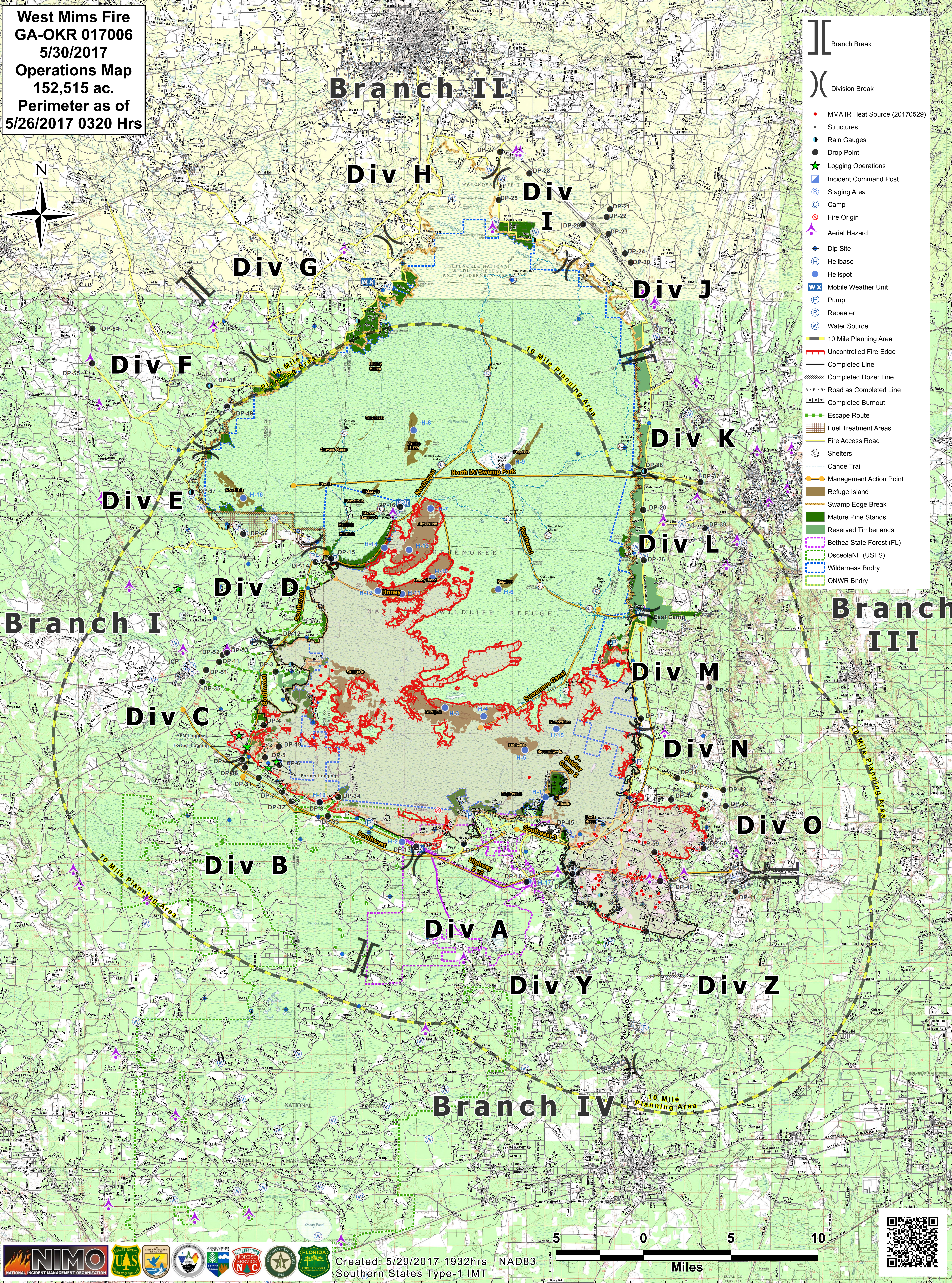
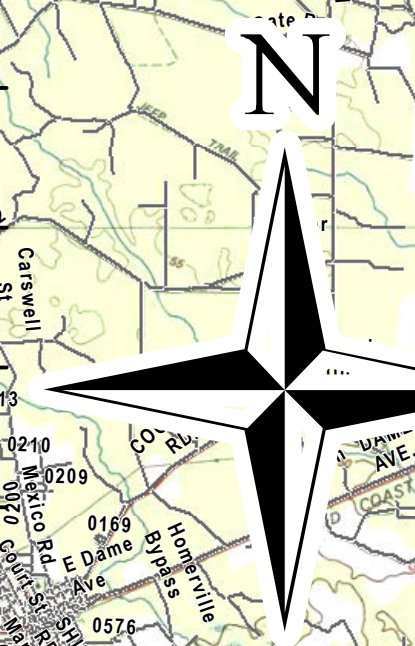


West Mims Fire
GA-OKR 017006
5/30/2017
Operations Map
152,515 ac.
Perimeter as of
5/26/2017 0320 Hrs

Branch II

- Branch Break
- Division Break
- MMA IR Heat Source (20170529)
- Structures
- Rain Gauges
- Drop Point
- Logging Operations
- Incident Command Post
- Staging Area
- Camp
- Fire Origin
- Aerial Hazard
- Dip Site
- Helibase
- Helispot
- Mobile Weather Unit
- Pump
- Repeater
- Water Source
- 10 Mile Planning Area
- Uncontrolled Fire Edge
- Completed Line
- Completed Dozer Line
- Road as Completed Line
- Completed Burnout
- Escape Route
- Fuel Treatment Areas
- Fire Access Road
- Shelters
- Canoe Trail
- Management Action Point
- Refuge Island
- Swamp Edge Break
- Mature Pine Stands
- Reserved Timberlands
- Bethesda State Forest (FL)
- OsceolaNF (USFS)
- Wilderness Bndry
- ONWR Bndry



Created: 5/29/2017 1932hrs NAD83
 Southern States Type-1 IMT

