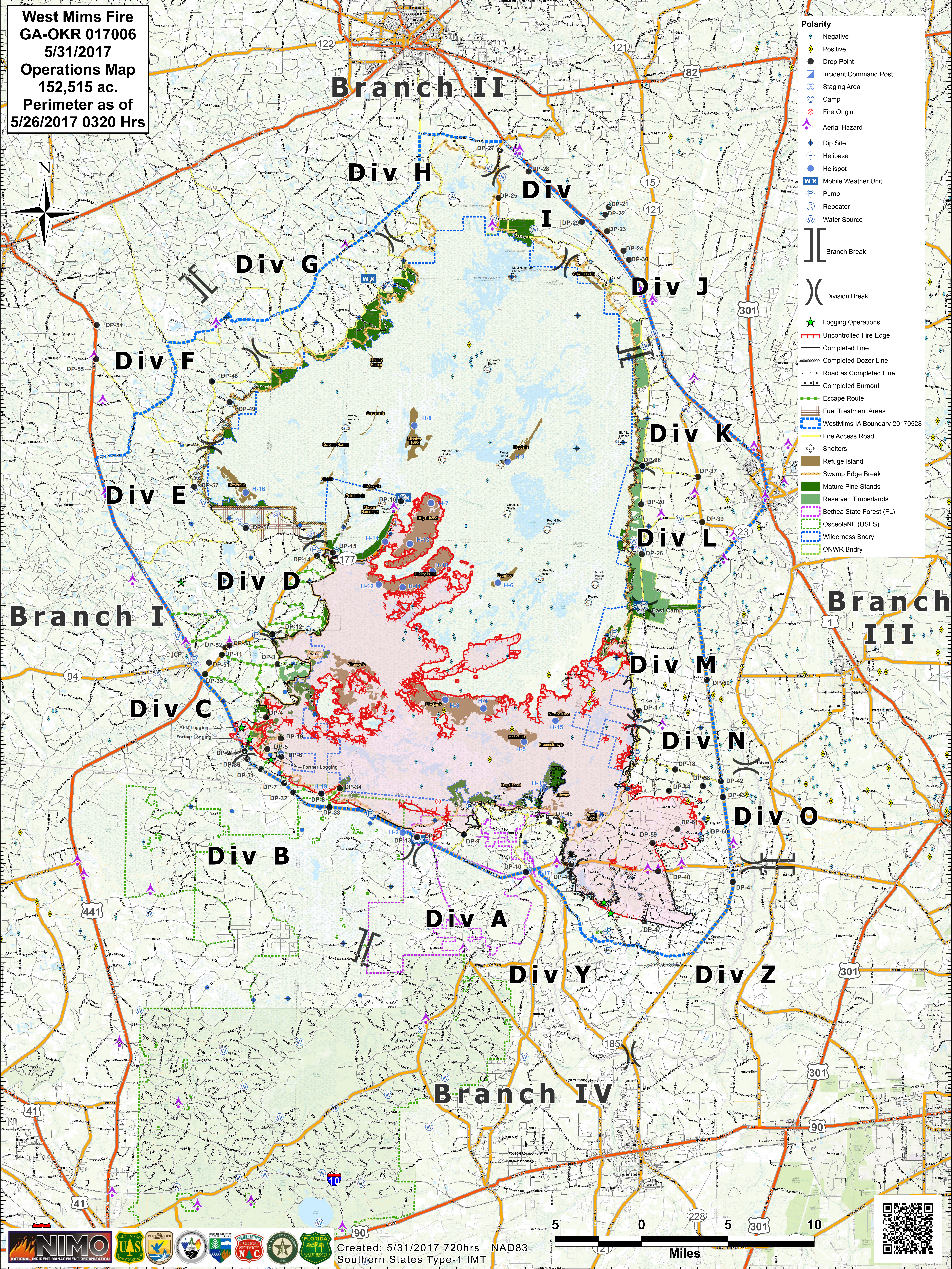
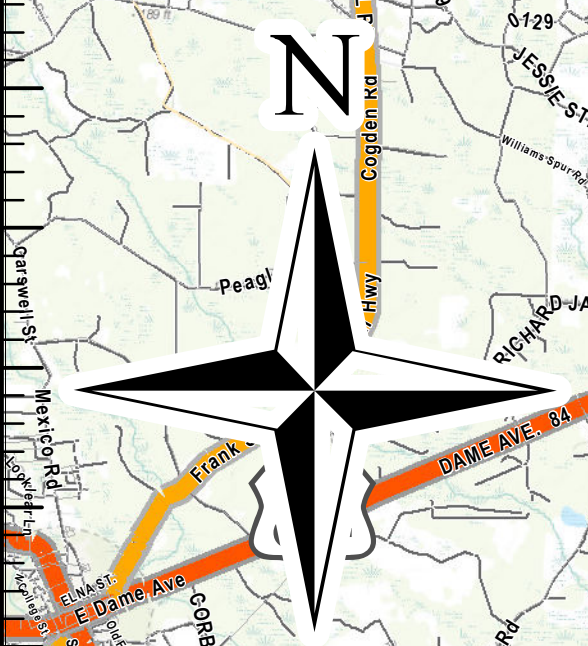


**West Mims Fire**  
**GA-OKR 017006**  
**5/31/2017**  
**Operations Map**  
**152,515 ac.**  
**Perimeter as of**  
**5/26/2017 0320 Hrs**

- Polarity**
- ◆ Negative
  - ◆ Positive
  - Drop Point
  - Incident Command Post
  - Staging Area
  - Camp
  - ⊗ Fire Origin
  - ▲ Aerial Hazard
  - ◆ Dip Site
  - Helibase
  - Helispot
  - W Mobile Weather Unit
  - P Pump
  - R Repeater
  - W Water Source
  - | Branch Break
  - ) Division Break
  - ★ Logging Operations
  - Uncontrolled Fire Edge
  - Completed Line
  - Completed Dozer Line
  - Road as Completed Line
  - Completed Burnout
  - Escape Route
  - Fuel Treatment Areas
  - WestMims IA Boundary 20170528
  - Fire Access Road
  - Shelters
  - Refuge Island
  - Swamp Edge Break
  - Mature Pine Stands
  - Reserved Timberlands
  - Bethea State Forest (FL)
  - OsceolaNF (USFS)
  - Wilderness Bndry
  - ONWR Bndry



Created: 5/31/2017 720hrs NAD83  
 Southern States Type-1 IMT

