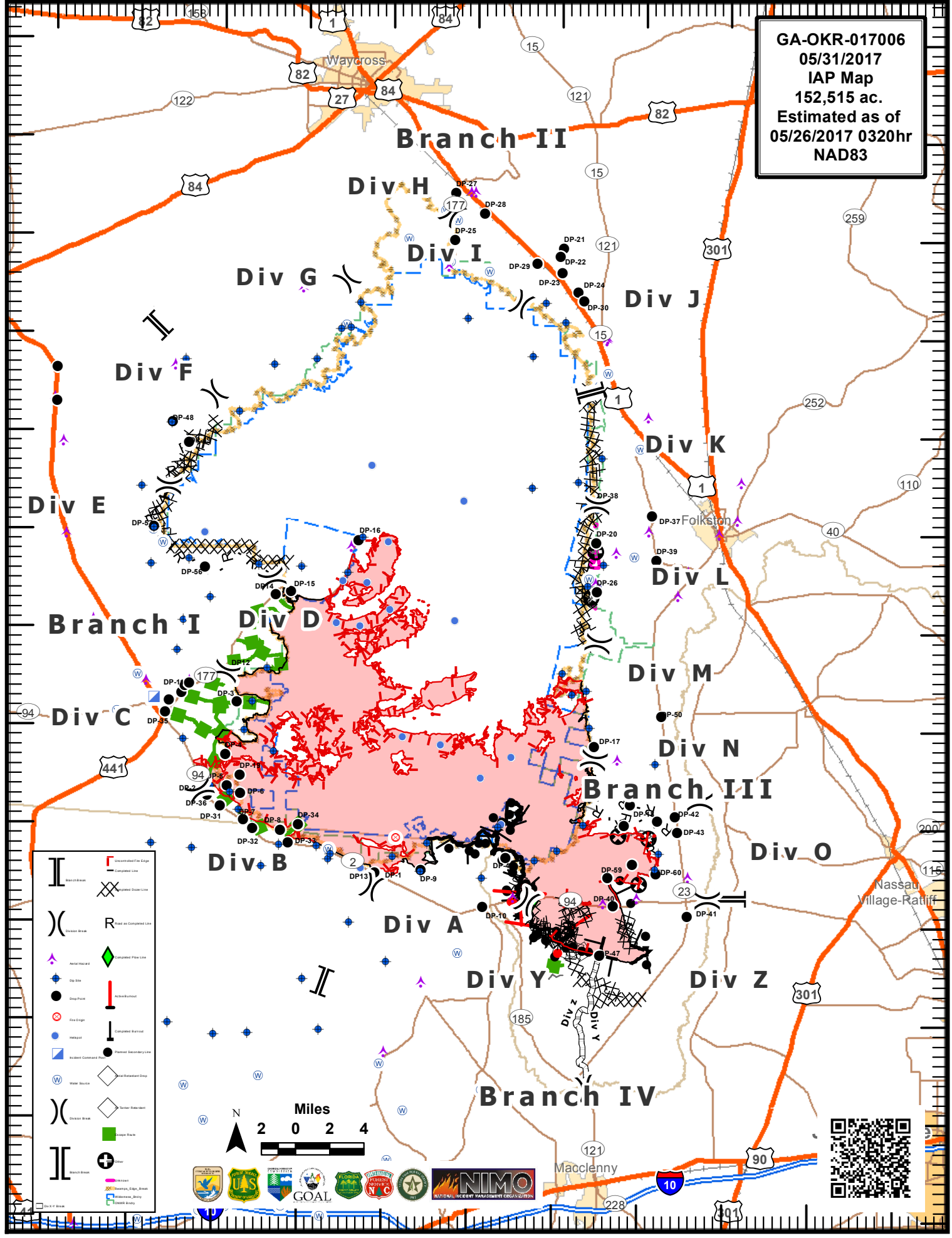


82°40'W 82°35'W 82°30'W 82°25'W 82°20'W 82°15'W 82°10'W 82°5'W 82°0'W 81°55'W 81°50'W

31°15'N 31°10'N 31°5'N 31°0'N 30°55'N 30°50'N 30°45'N 30°40'N 30°35'N 30°30'N 30°25'N 30°20'N 30°15'N

GA-OKR-017006  
05/31/2017  
IAP Map  
152,515 ac.  
Estimated as of  
05/26/2017 0320hr  
NAD83



	Uncontested Fire Edge
	Complete Line
	Disputed Line
	Riser on Contested Line
	Aerial Hazard
	Drop Site
	Drop Point
	Fire Origin
	Helipad
	Incident Command Post
	Water Source
	Disputed Break
	Branch Break
	Uncontested Fire Edge
	Complete Line
	Disputed Line
	Riser on Contested Line
	Aerial Hazard
	Drop Site
	Drop Point
	Fire Origin
	Helipad
	Incident Command Post
	Water Source
	Disputed Break
	Branch Break
	Uncontested Fire Edge
	Complete Line
	Disputed Line
	Riser on Contested Line
	Aerial Hazard
	Drop Site
	Drop Point
	Fire Origin
	Helipad
	Incident Command Post
	Water Source
	Disputed Break
	Branch Break

