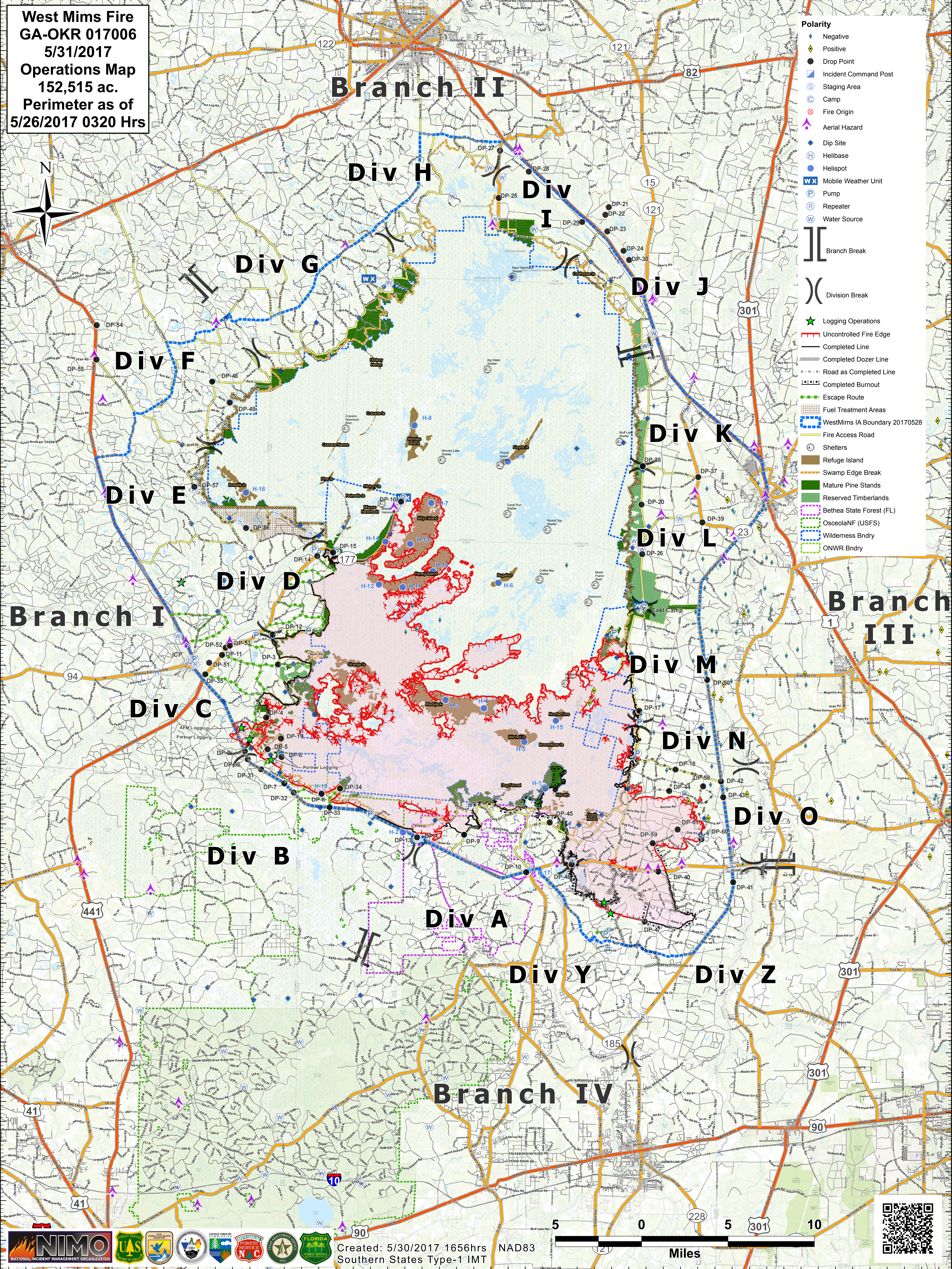
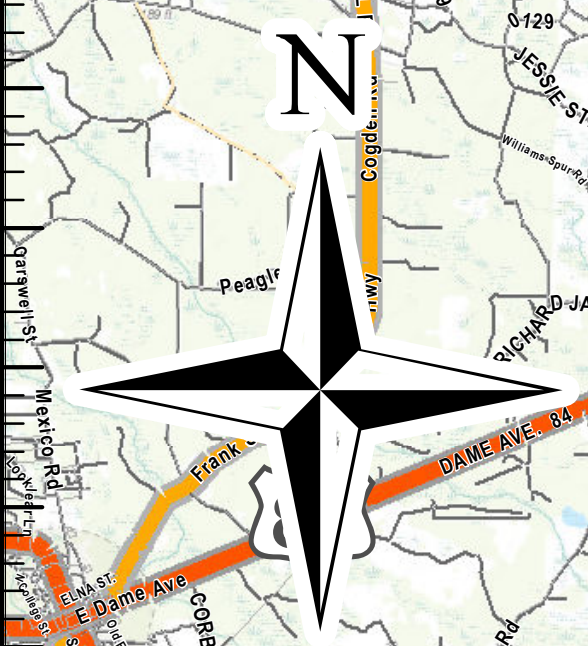


West Mims Fire
GA-OKR 017006
5/31/2017
Operations Map
152,515 ac.
Perimeter as of
5/26/2017 0320 Hrs

- Polarity**
- ◆ Negative
 - ◆ Positive
 - Drop Point
 - Incident Command Post
 - Staging Area
 - Camp
 - ⊗ Fire Origin
 - ▲ Aerial Hazard
 - ◆ Dip Site
 - Helibase
 - Helispot
 - WX Mobile Weather Unit
 - P Pump
 - R Repeater
 - W Water Source
 -]] Branch Break
 -) Division Break
 - ★ Logging Operations
 - Uncontrolled Fire Edge
 - Completed Line
 - Completed Dozer Line
 - Road as Completed Line
 - Completed Burnout
 - Escape Route
 - Fuel Treatment Areas
 - WestMims IA Boundary 20170528
 - Fire Access Road
 - Shelters
 - Refuge Island
 - Swamp Edge Break
 - Mature Pine Stands
 - Reserved Timberlands
 - Bethea State Forest (FL)
 - OsceolaNF (USFS)
 - Wilderness Bndry
 - ONWR Bndry



Created: 5/30/2017 1656hrs NAD83
 Southern States Type-1 IMT

