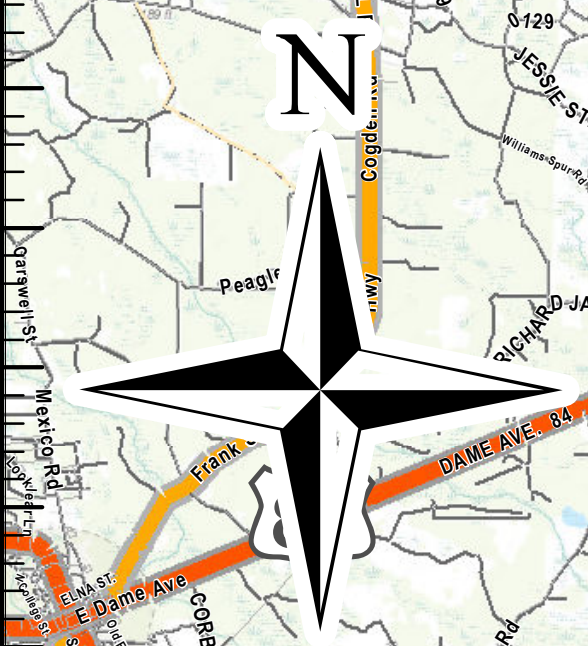
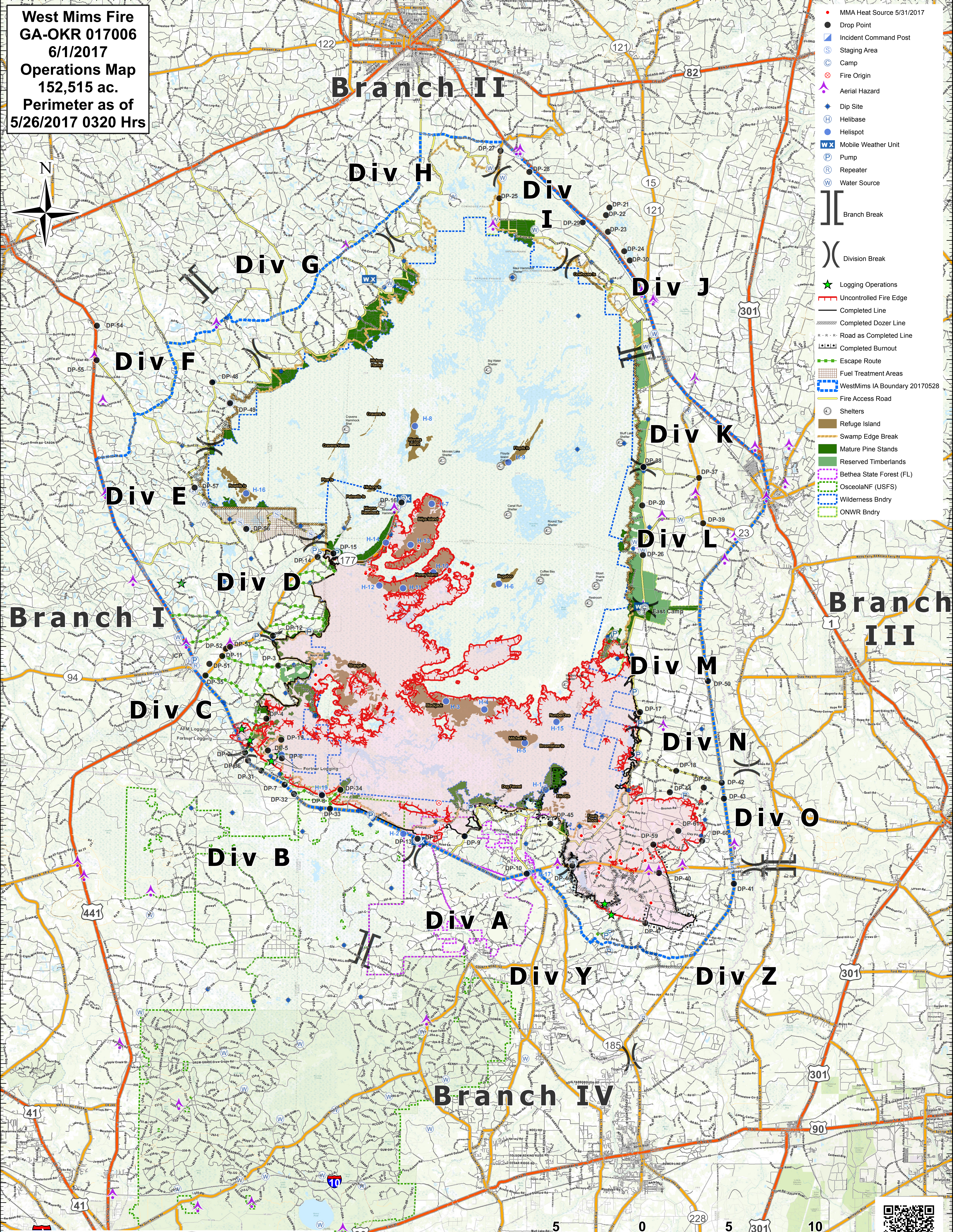


West Mims Fire
GA-OKR 017006
6/1/2017
Operations Map
152,515 ac.
Perimeter as of
5/26/2017 0320 Hrs



- MMA Heat Source 5/31/2017
- Drop Point
- Incident Command Post
- Staging Area
- Camp
- Fire Origin
- ▲ Aerial Hazard
- ◆ Dip Site
- Helibase
- Helispot
- W Mobile Weather Unit
- P Pump
- R Repeater
- W Water Source
- || Branch Break
-) Division Break
- ★ Logging Operations
- Uncontrolled Fire Edge
- Completed Line
- Completed Dozer Line
- Road as Completed Line
- Completed Burnout
- Escape Route
- Fuel Treatment Areas
- WestMims IA Boundary 20170528
- Fire Access Road
- Shelters
- Refuge Island
- Swamp Edge Break
- Mature Pine Stands
- Reserved Timberlands
- Bethea State Forest (FL)
- OsceolaNF (USFS)
- Wilderness Bndry
- ONWR Bndry



Created: 5/31/2017 1837hrs NAD83
 Southern States Type-1 IMT

