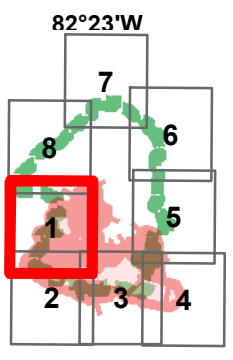


- | | | | |
|---------------|-----------------------|------------------------|----------------------|
| Aerial Hazard | Camp | Staging Area | Completed Dozer Line |
| Dip Site | Incident Command Post | Division Break | Completed Burnout |
| Drop Point | Structure | Branch Break | Escape Route |
| Fire Origin | Pump | Uncontrolled Fire Edge | Swamp Edge Break |
| Helibase | Repeater | Completed Line | Fire Access Road |
| Helispot | Water Source | Refuge Island | Rain Gauges |

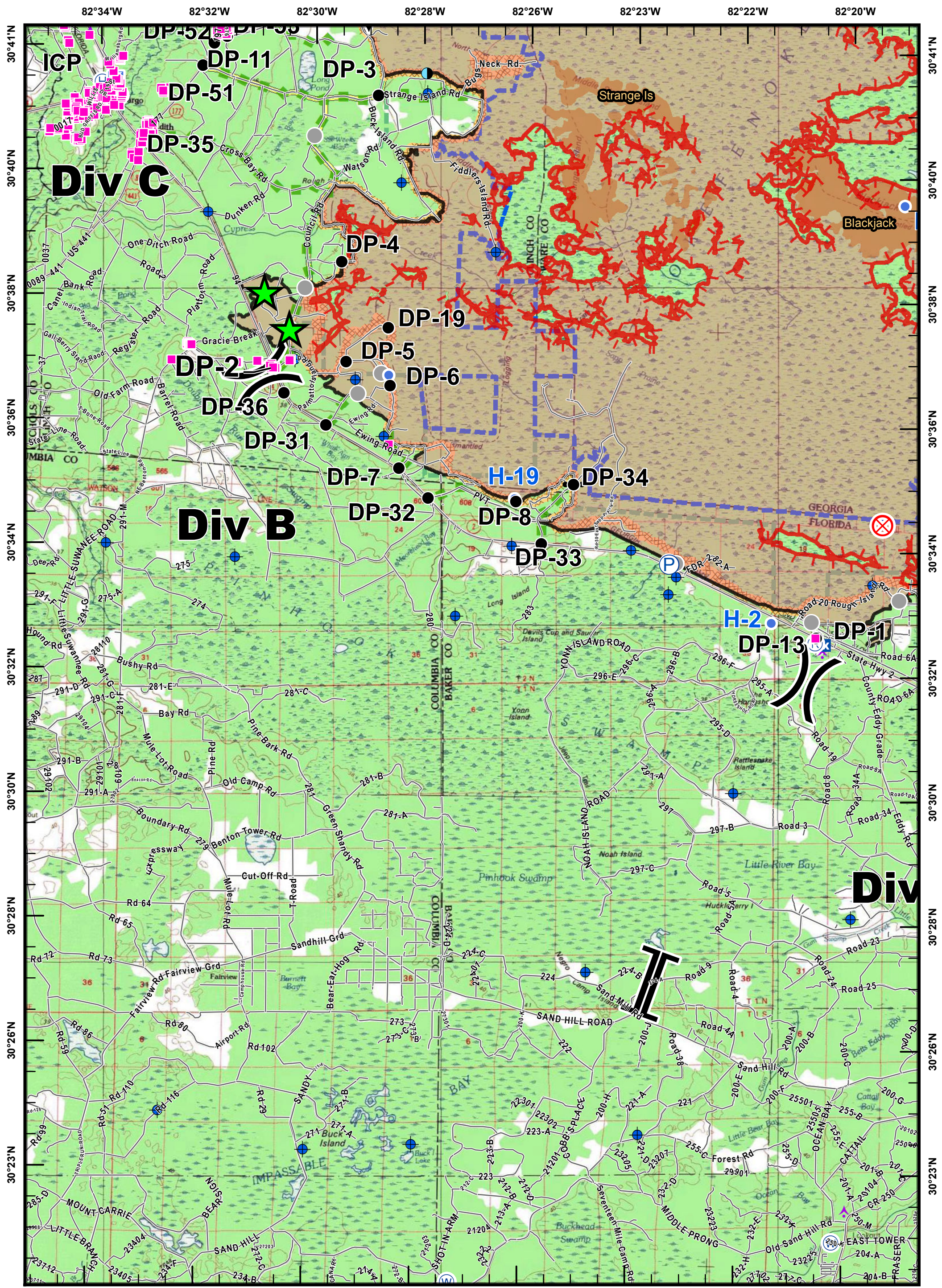


Scale: 0 to 2 Miles

West Mims Fire
GA-OKR-017006
06/04/2017

Page 1 IAP Map Book
 Estimated 5/26/2017 0320 Hrs
 152,515 ac.

Created: 6/3/2017 1736hrs
 Southern States Type-1 IMT

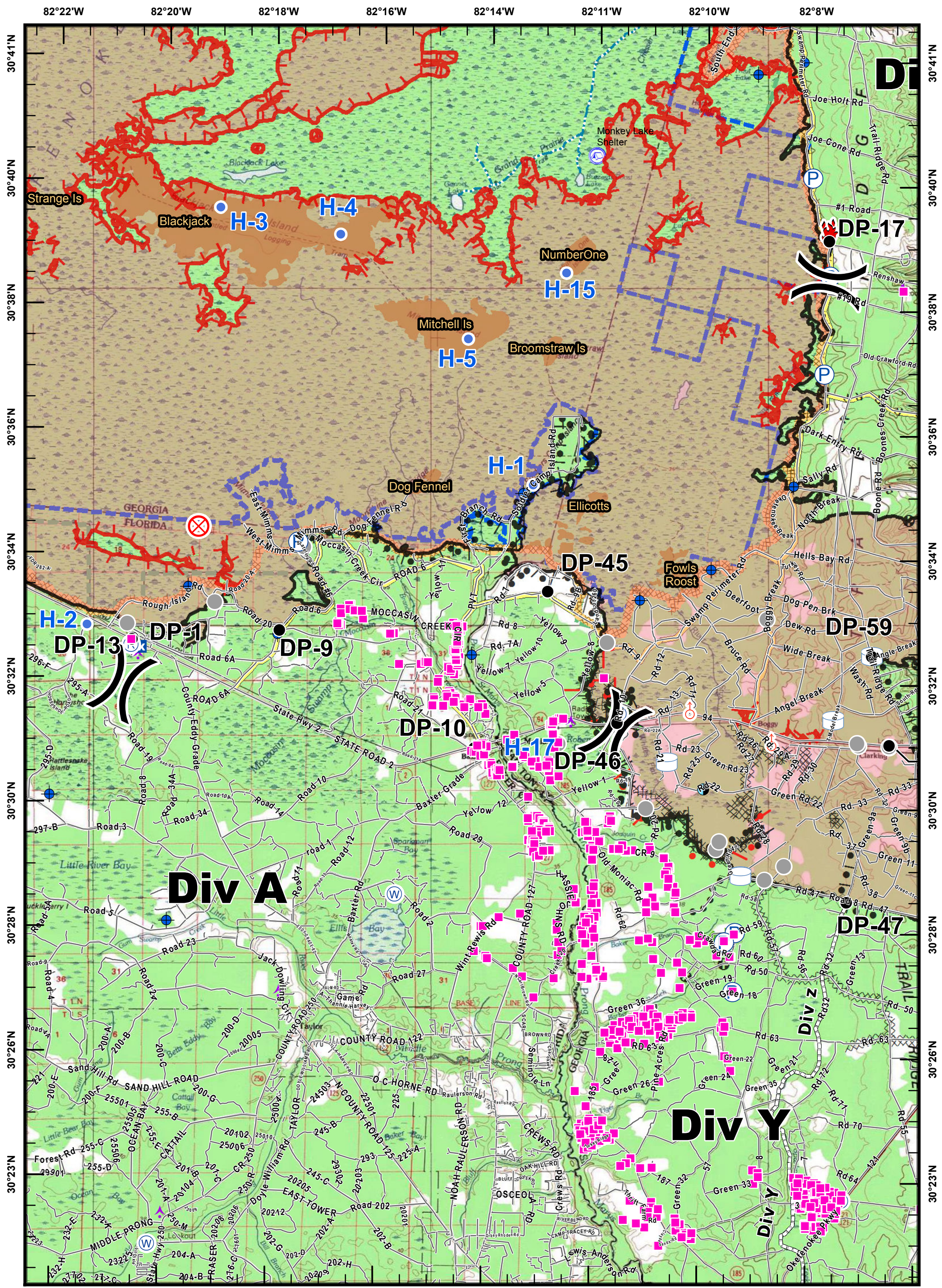


<ul style="list-style-type: none"> Aerial Hazard Dip Site Drop Point Fire Origin Helibase Helispot 	<ul style="list-style-type: none"> Camp Incident Command Post Structure Pump Repeater Water Source Rain Gauges 	<ul style="list-style-type: none"> Staging Area Division Break Branch Break Uncontrolled Fire Edge Completed Line 	<ul style="list-style-type: none"> Completed Dozer Line Completed Burnout Escape Route Swamp Edge Break Fire Access Road Refuge Island
--	--	---	--

West Mims Fire
GA-OKR-017006
06/04/2017

Page 2 IAP Map Book
 Estimated 5/26/2017 0320 Hrs
 152,515 ac.

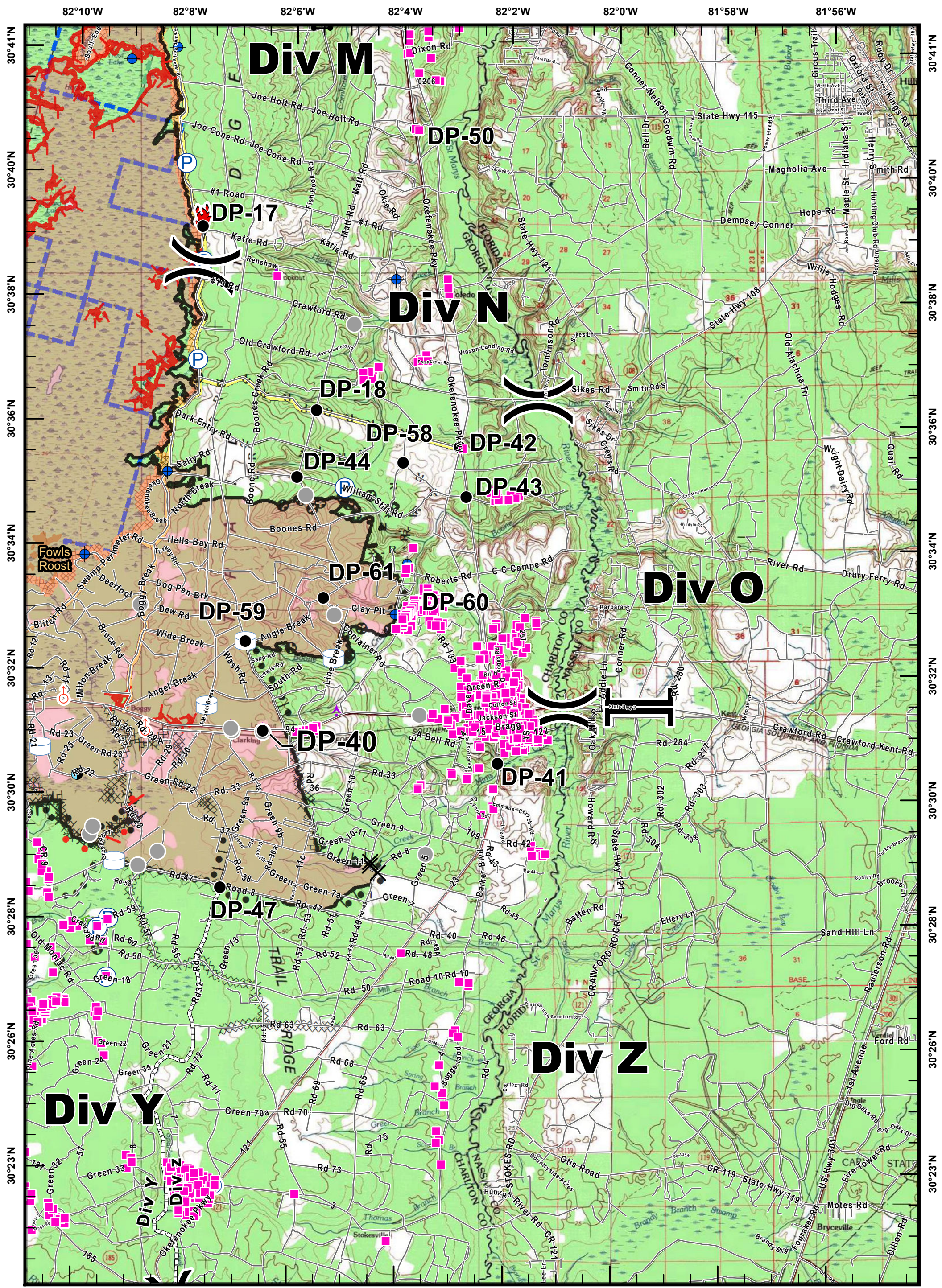
Created: 6/3/2017 1737hrs
 Southern States Type-1 IMT



<ul style="list-style-type: none"> Aerial Hazard Dip Site Drop Point Fire Origin Helibase Helispot 	<ul style="list-style-type: none"> Camp Incident Command Post Structure Pump Repeater Water Source Rain Gauges 	<ul style="list-style-type: none"> Staging Area Division Break Branch Break Uncontrolled Fire Edge Completed Line 	<ul style="list-style-type: none"> Completed Dozer Line Completed Burnout Escape Route Swamp Edge Break Fire Access Road Refuge Island
--	--	---	--

West Mims Fire
GA-OKR-017006
06/04/2017

Page 3 IAP Map Book
 Estimated 5/26/2017 0320 Hrs
 152,515 ac. Created: 6/3/2017 1737hrs
 Southern States Type-1 IMT



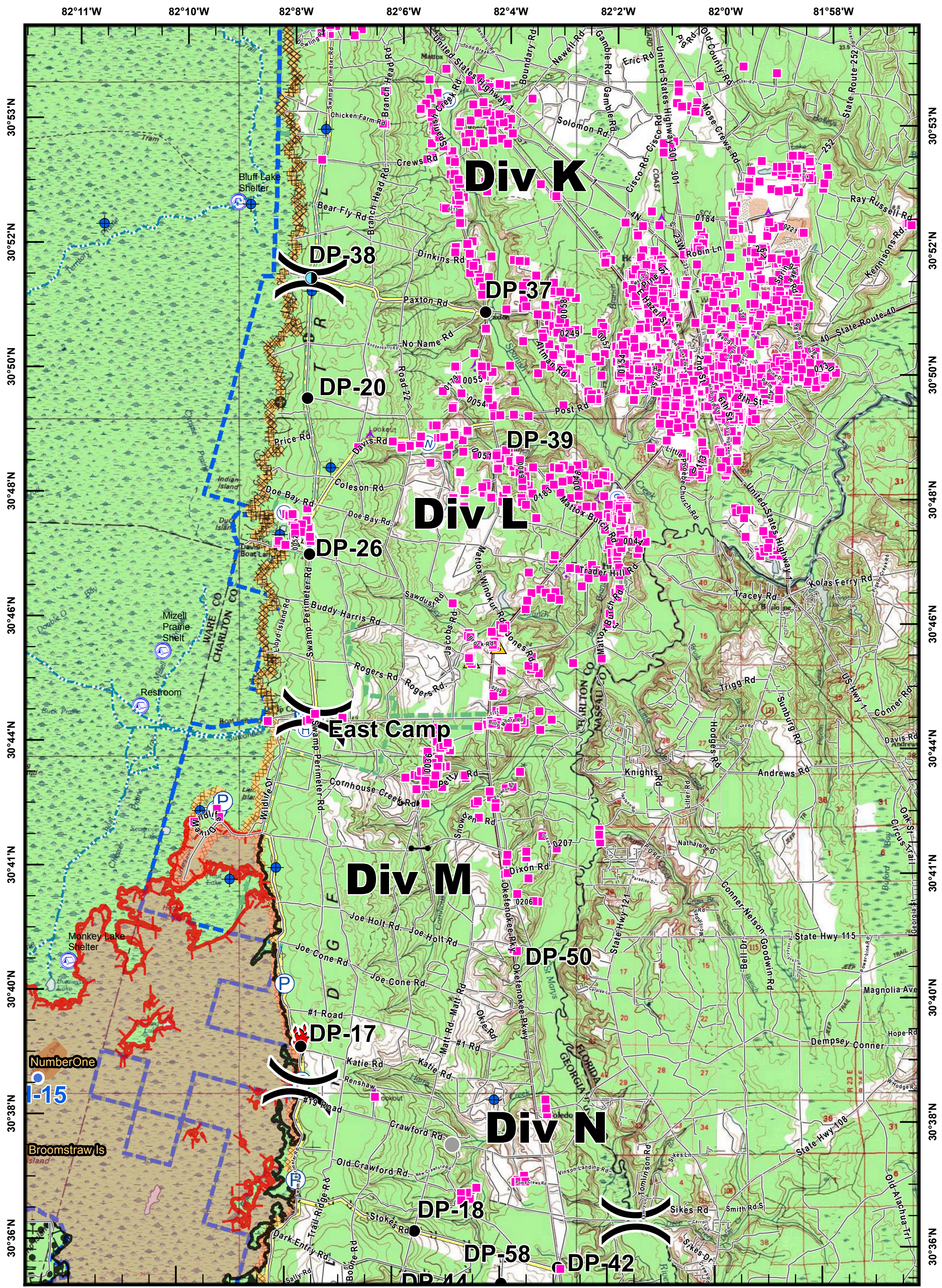
- | | | | |
|--|--|---|--|
| <ul style="list-style-type: none"> Aerial Hazard Dip Site Drop Point Fire Origin Helibase Helispot | <ul style="list-style-type: none"> Camp Incident Command Post Structure Pump Repeater Water Source Rain Gauges | <ul style="list-style-type: none"> Staging Area Division Break Branch Break Uncontrolled Fire Edge Completed Line | <ul style="list-style-type: none"> Completed Dozer Line Completed Burnout Escape Route Swamp Edge Break Fire Access Road Refuge Island |
|--|--|---|--|

Miles

West Mims Fire
GA-OKR-017006
06/04/2017

Page 4 IAP Map Book
Estimated 5/26/2017 0320 Hrs
152,515 ac.

Created: 6/3/2017 1737hrs
Southern States Type-1 IMT

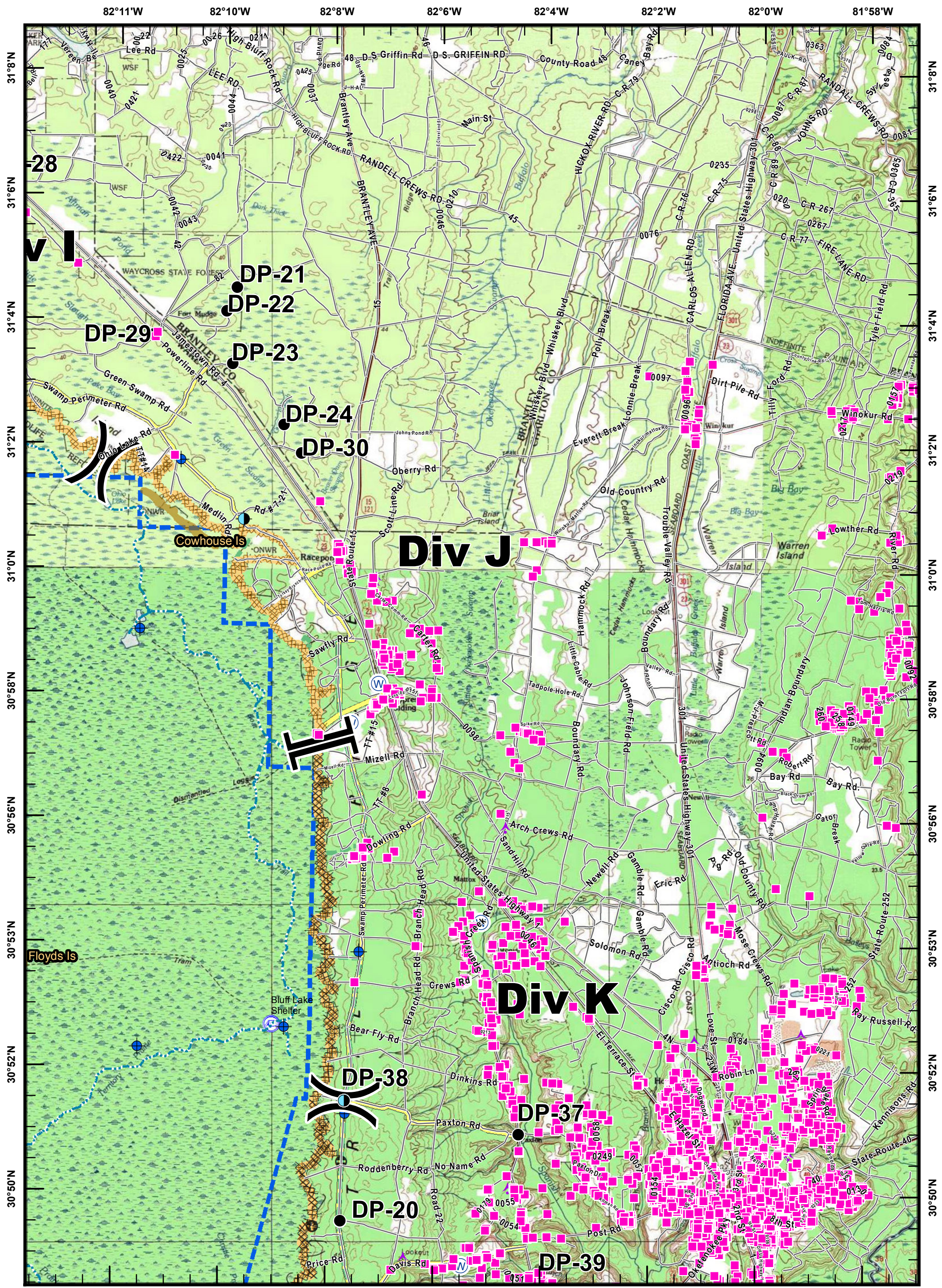


<ul style="list-style-type: none"> Aerial Hazard Dip Site Drop Point Fire Origin Helibase Helispot 	<ul style="list-style-type: none"> Camp Incident Command Post Pump Repeater Water Source Rain Gauges 	<ul style="list-style-type: none"> Staging Area Division Break Branch Break Uncontrolled Fire Edge Completed Line 	<ul style="list-style-type: none"> Completed Dozer Line Completed Burnout Escape Route Swamp Edge Break Fire Access Road Refuge Island
--	--	---	--

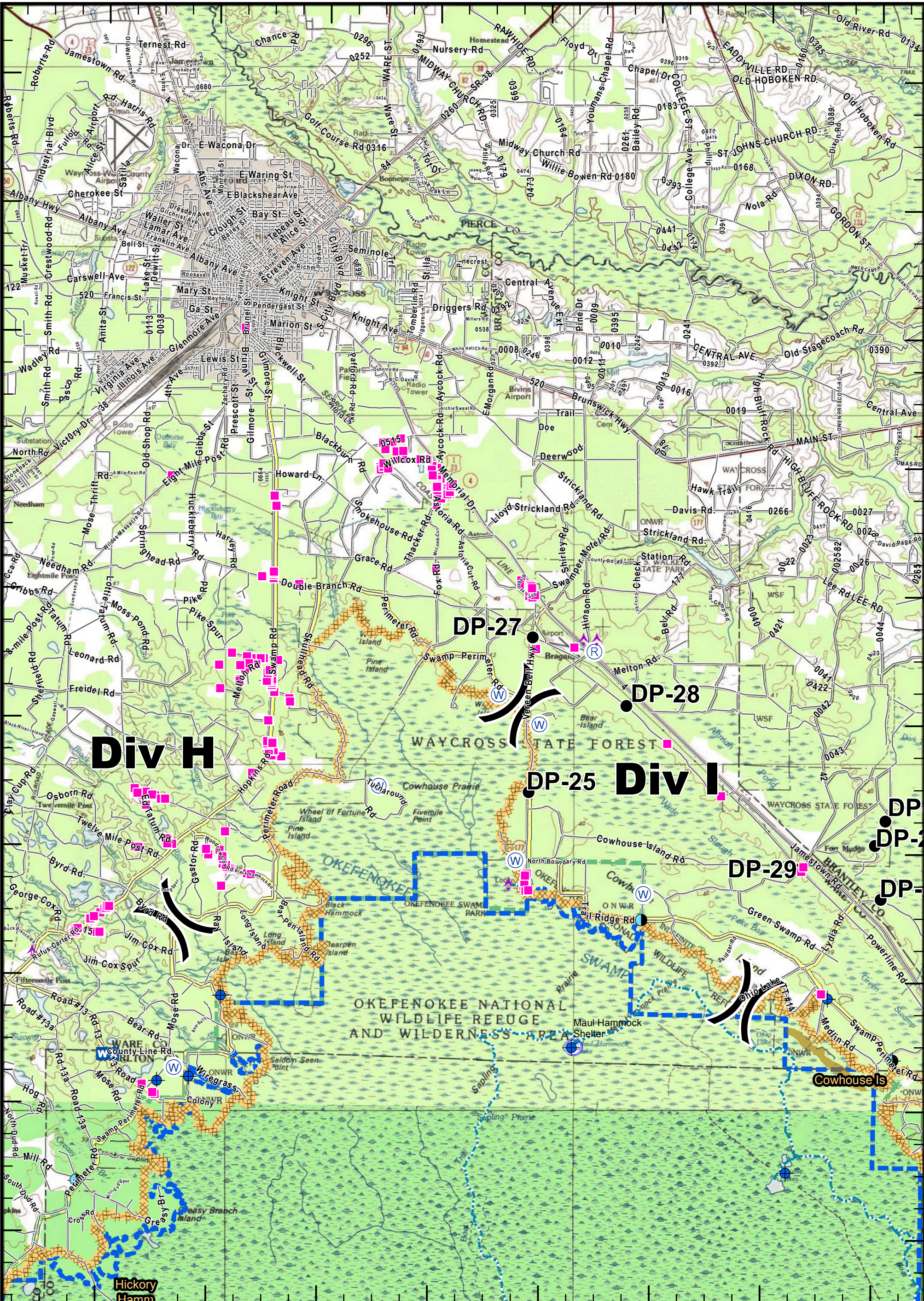
West Mims Fire
GA-OKR-017006
06/04/2017

Page 5 IAP Map Book
 Estimated 5/26/2017 0320 Hrs
 152,515 ac.

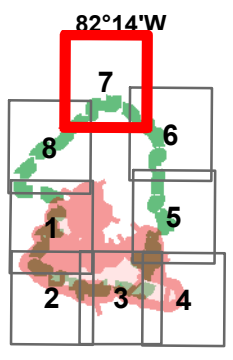
Created: 6/3/2017 1738hrs
 Southern States Type-1 IMT



<ul style="list-style-type: none"> Aerial Hazard Dip Site Drop Point Fire Origin Helibase Helispot 	<ul style="list-style-type: none"> Camp Incident Command Post Structure Pump Repeater Water Source Rain Gauges 	<ul style="list-style-type: none"> Staging Area Division Break Branch Break Uncontrolled Fire Edge Completed Line 	<ul style="list-style-type: none"> Completed Dozer Line Escape Route Fire Access Road Refuge Island 		<p>Scale: 1 0 1 2 Miles</p> <p>West Mims Fire GA-OKR-017006 06/04/2017</p> <p>Page 6 IAP Map Book Estimated 5/26/2017 0320 Hrs 152,515 ac.</p> <p>Created: 6/3/2017 1738hrs Southern States Type-1 IMT</p>
--	--	---	--	--	--



- Aerial Hazard
- Camp
- Staging Area
- Completed Dozer Line
- Dip Site
- Incident Command Post
- Division Break
- Completed Burnout
- Drop Point
- Structure
- Branch Break
- Escape Route
- Fire Origin
- Pump
- Swamp Edge Break
- Repeater
- Uncontrolled Fire Edge
- Fire Access Road
- Refuge Island
- Helibase
- Water Source
- Completed Line
- Rain Gauges
- Helispot

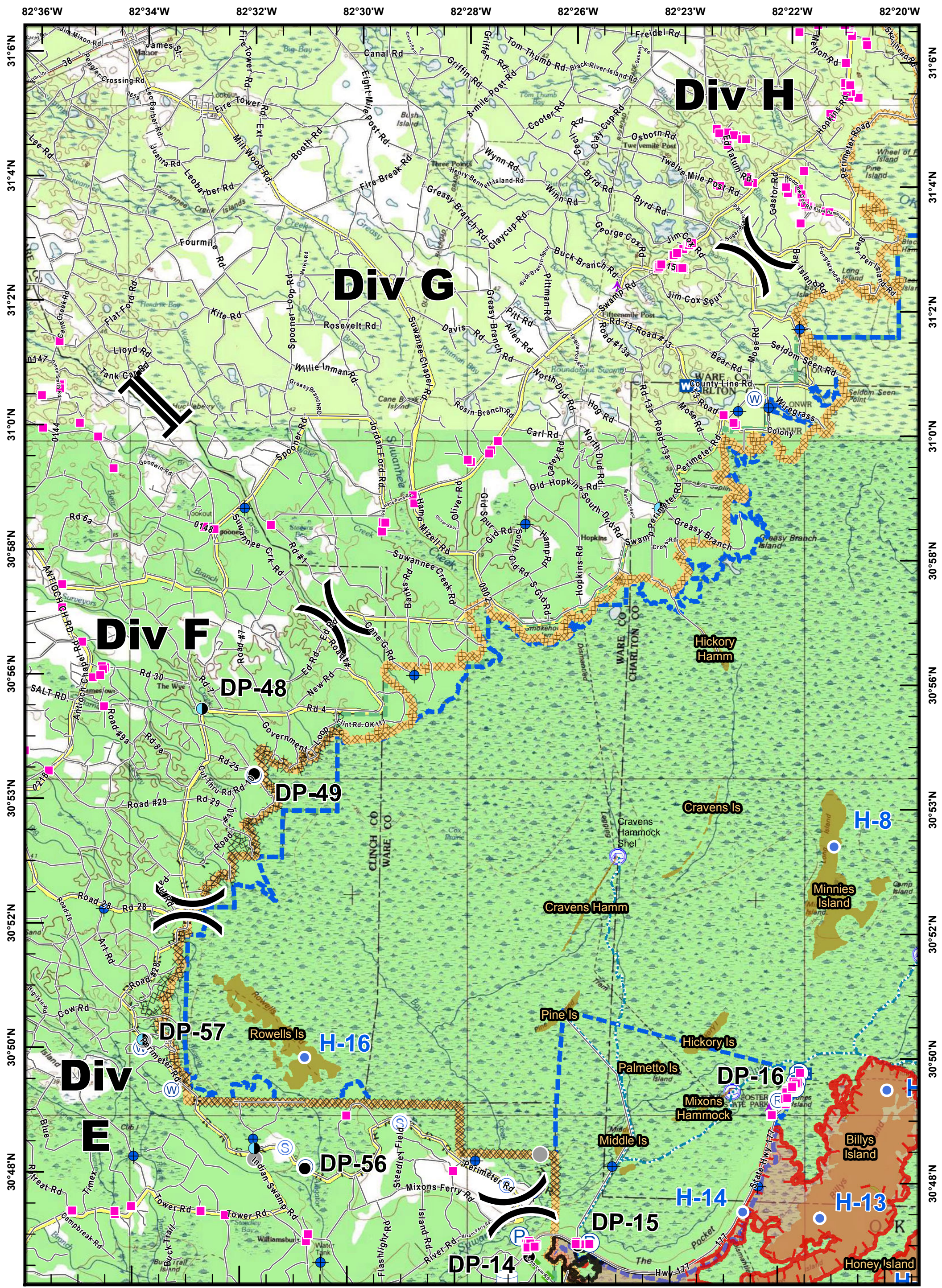


1 0 1 2
Miles

N
W E S

West Mims Fire
GA-OKR-017006
06/04/2017

Page 7 IAP Map Book
Estimated 5/26/2017 0320 Hrs
152,515 ac. Created: 6/3/2017 1739hrs
Southern States Type-1 IMT



<ul style="list-style-type: none"> Aerial Hazard Dip Site Drop Point Fire Origin Helibase Helispot 	<ul style="list-style-type: none"> Camp Incident Command Post Structure Pump Repeater Water Source Rain Gauges 	<ul style="list-style-type: none"> Staging Area Division Break Branch Break Uncontrolled Fire Edge Completed Line 	<ul style="list-style-type: none"> Completed Dozer Line Completed Burnout Escape Route Swamp Edge Break Fire Access Road Refuge Island
--	--	---	--

West Mims Fire
GA-OKR-017006
06/04/2017

Page 8 IAP Map Book
 Estimated 5/26/2017 0320 Hrs
 152,515 ac. Created: 6/3/2017 1739hrs
 Southern States Type-1 IMT