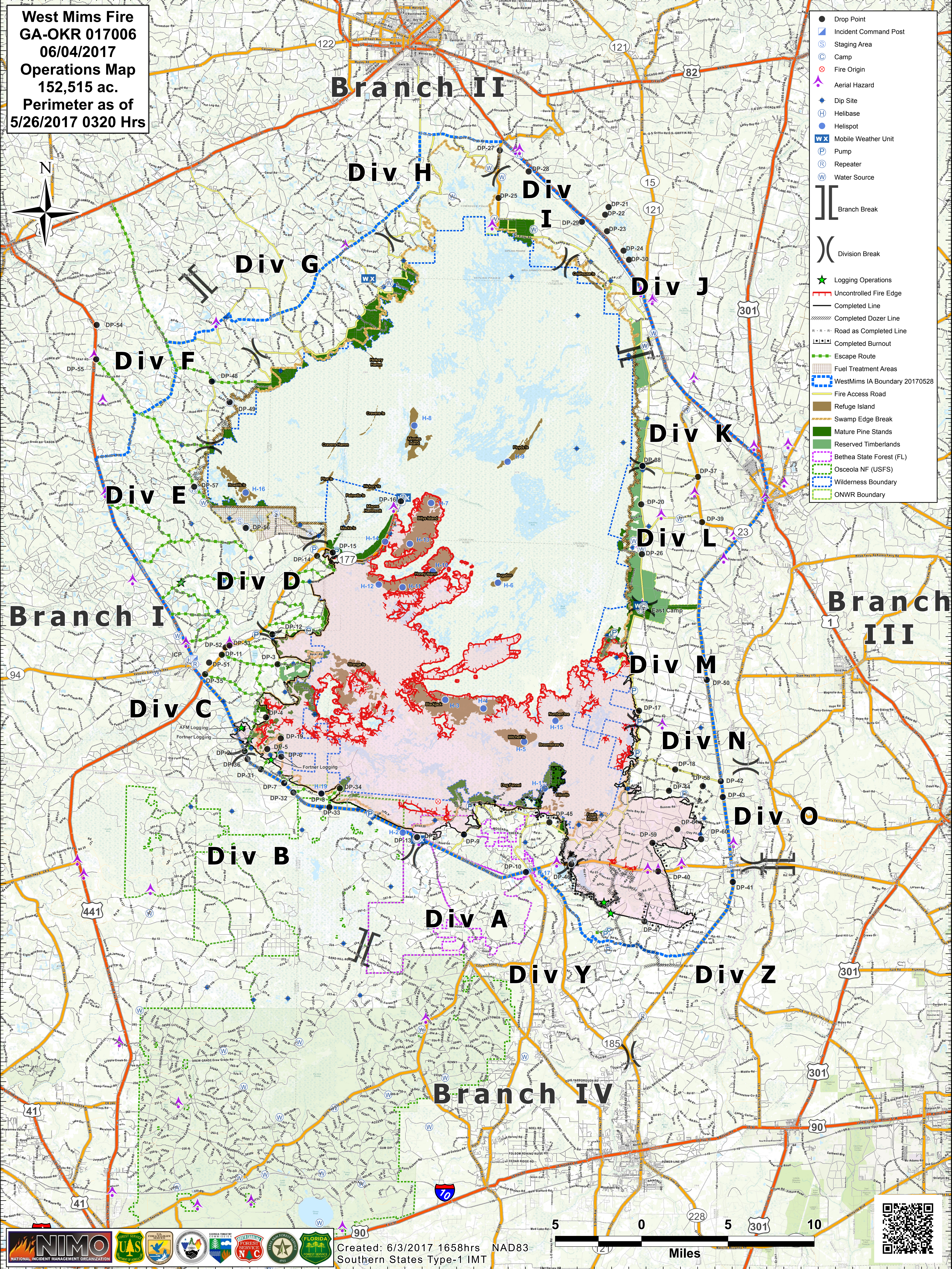


**West Mims Fire**  
**GA-OKR 017006**  
**06/04/2017**  
**Operations Map**  
**152,515 ac.**  
**Perimeter as of**  
**5/26/2017 0320 Hrs**

- Drop Point
- Incident Command Post
- ⊙ Staging Area
- ⊙ Camp
- ⊙ Fire Origin
- ▲ Aerial Hazard
- ◆ Dip Site
- ⊙ Helibase
- ⊙ Helispot
- W X Mobile Weather Unit
- ⊙ Pump
- ⊙ Repeater
- ⊙ Water Source
- ]] Branch Break
- ) Division Break
- ★ Logging Operations
- Uncontrolled Fire Edge
- Completed Line
- Completed Dozer Line
- R - R - Road as Completed Line
- Completed Burnout
- Escape Route
- Fuel Treatment Areas
- WestMims IA Boundary 20170528
- Fire Access Road
- Refuge Island
- Swamp Edge Break
- Mature Pine Stands
- Reserved Timberlands
- Bethea State Forest (FL)
- Osceola NF (USFS)
- Wilderness Boundary
- ONWR Boundary



Created: 6/3/2017 1658hrs NAD83  
 Southern States Type-1 IMT

