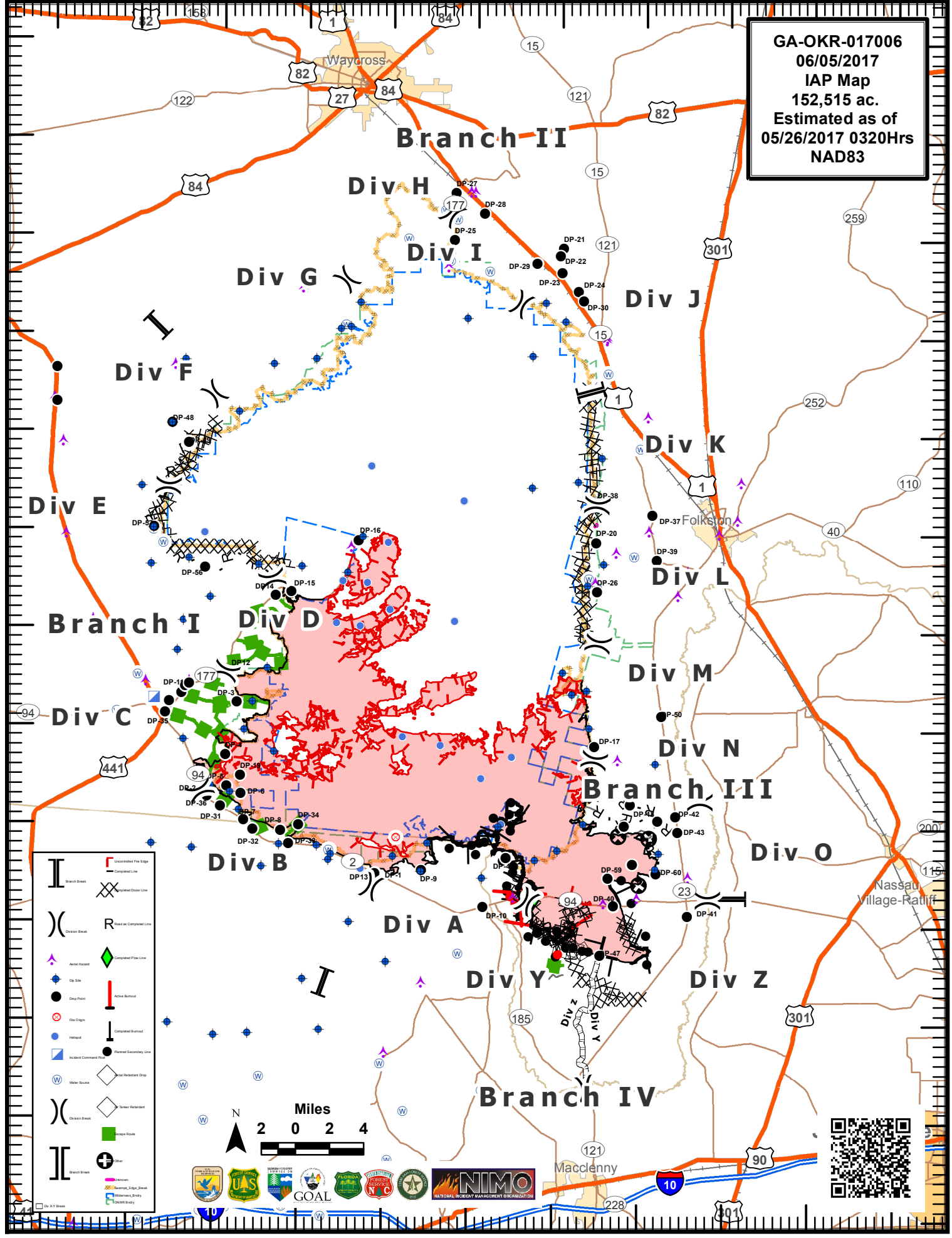


82°40'W 82°35'W 82°30'W 82°25'W 82°20'W 82°15'W 82°10'W 82°5'W 82°0'W 81°55'W 81°50'W

31°15'N 31°10'N 31°5'N 31°0'N 30°55'N 30°50'N 30°45'N 30°40'N 30°35'N 30°30'N 30°25'N 30°20'N 30°15'N

GA-OKR-017006
06/05/2017
IAP Map
152,515 ac.
Estimated as of
05/26/2017 0320Hrs
NAD83



	Uncontrolled Fire Edge
	Completed Line
	Retard as Completed Line
	Completed Fire Line
	Active Burn
	Completed Burn
	Normal Secondary Line
	Fire Retardant Drop
	Air Retardant Drop
	Stem Retention
	Stem Retention
	Stem Retention
	Other

