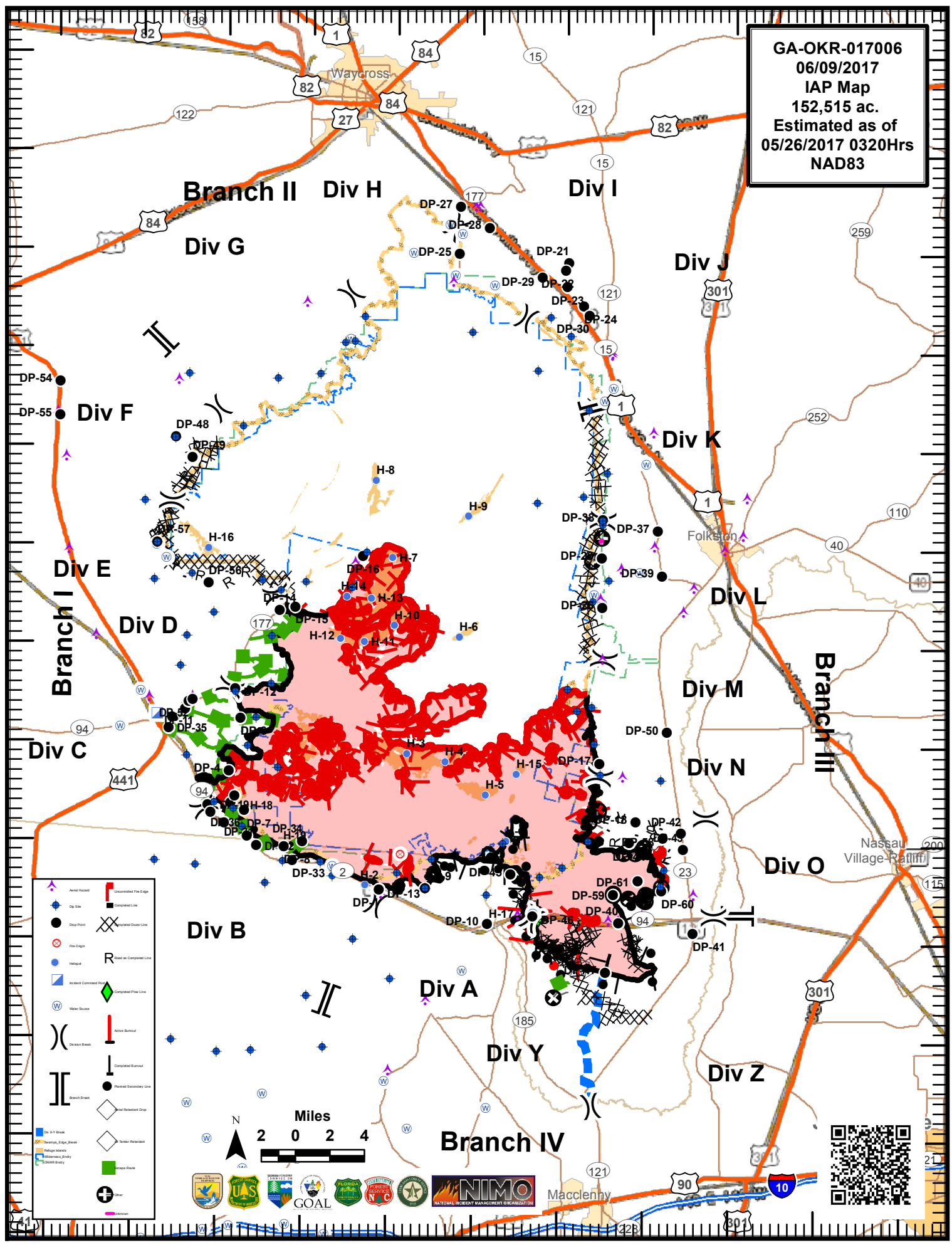


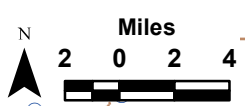
82°40'W 82°35'W 82°30'W 82°25'W 82°20'W 82°15'W 82°10'W 82°5'W 82°0'W 81°55'W 81°50'W

31°15'N 31°10'N 31°05'N 31°00'N 30°55'N 30°50'N 30°45'N 30°40'N 30°35'N 30°30'N 30°25'N 30°20'N 30°15'N

GA-OKR-017006  
06/09/2017  
IAP Map  
152,515 ac.  
Estimated as of  
05/26/2017 0320Hrs  
NAD83



- Aerial Hazard
- Drop Point
- File Origin
- Hotspot
- Included Command Point
- Water Source
- Division Break
- Branch Break
- On Air Break
- Resource Edge Break
- Hotspot
- Waterman Body
- 1200M Story
- Unpermitted Fire Edge
- Completed Line
- Unpermitted Clear Line
- Reset as Completed Line
- Completed Prior Line
- Active Burned
- Completed Burned
- Threat Secondary Line
- On Statement Strip
- Order Restored
- Scrape Pile
- Unknown



31°15'N 31°10'N 31°05'N 31°00'N 30°55'N 30°50'N 30°45'N 30°40'N 30°35'N 30°30'N 30°25'N 30°20'N 30°15'N

82°40'W 82°35'W 82°30'W 82°25'W 82°20'W 82°15'W 82°10'W 82°5'W 82°0'W 81°55'W 81°50'W