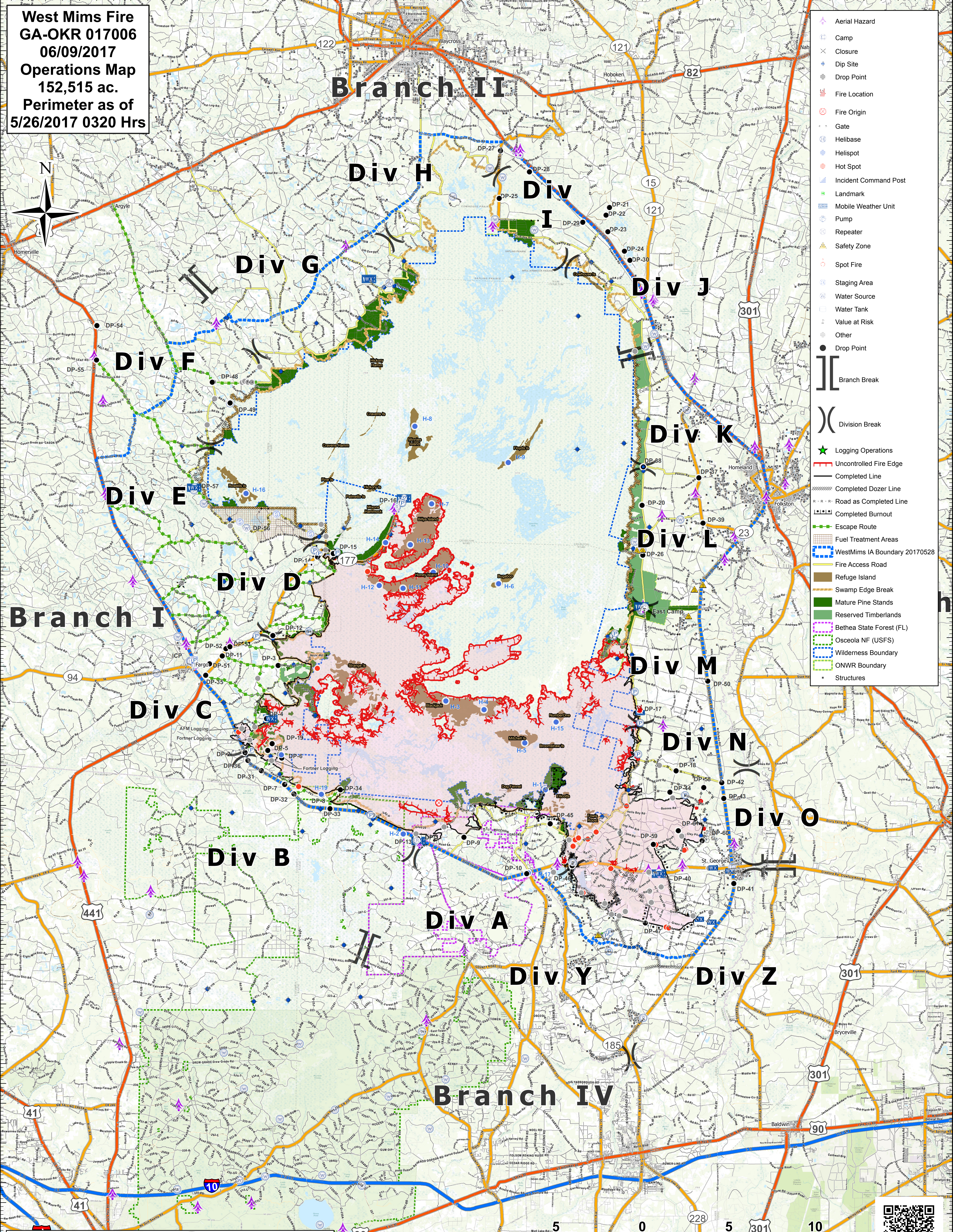


**West Mims Fire**  
**GA-OKR 017006**  
**06/09/2017**  
**Operations Map**  
**152,515 ac.**  
**Perimeter as of**  
**5/26/2017 0320 Hrs**



- Aerial Hazard
- Camp
- Closure
- Dip Site
- Drop Point
- Fire Location
- Fire Origin
- Gate
- Helibase
- Helispot
- Hot Spot
- Incident Command Post
- Landmark
- Mobile Weather Unit
- Pump
- Repeater
- Safety Zone
- Spot Fire
- Staging Area
- Water Source
- Water Tank
- Value at Risk
- Other
- Drop Point
- Branch Break
- Division Break
- Logging Operations
- Uncontrolled Fire Edge
- Completed Line
- Completed Dozer Line
- Road as Completed Line
- Completed Burnout
- Escape Route
- Fuel Treatment Areas
- WestMims IA Boundary 20170528
- Fire Access Road
- Refuge Island
- Swamp Edge Break
- Mature Pine Stands
- Reserved Timberlands
- Bethea State Forest (FL)
- Osceola NF (USFS)
- Wilderness Boundary
- ONWR Boundary
- Structures



Created: 6/8/2017 1851hrs NAD83  
 Southern States Type-1 IMT

