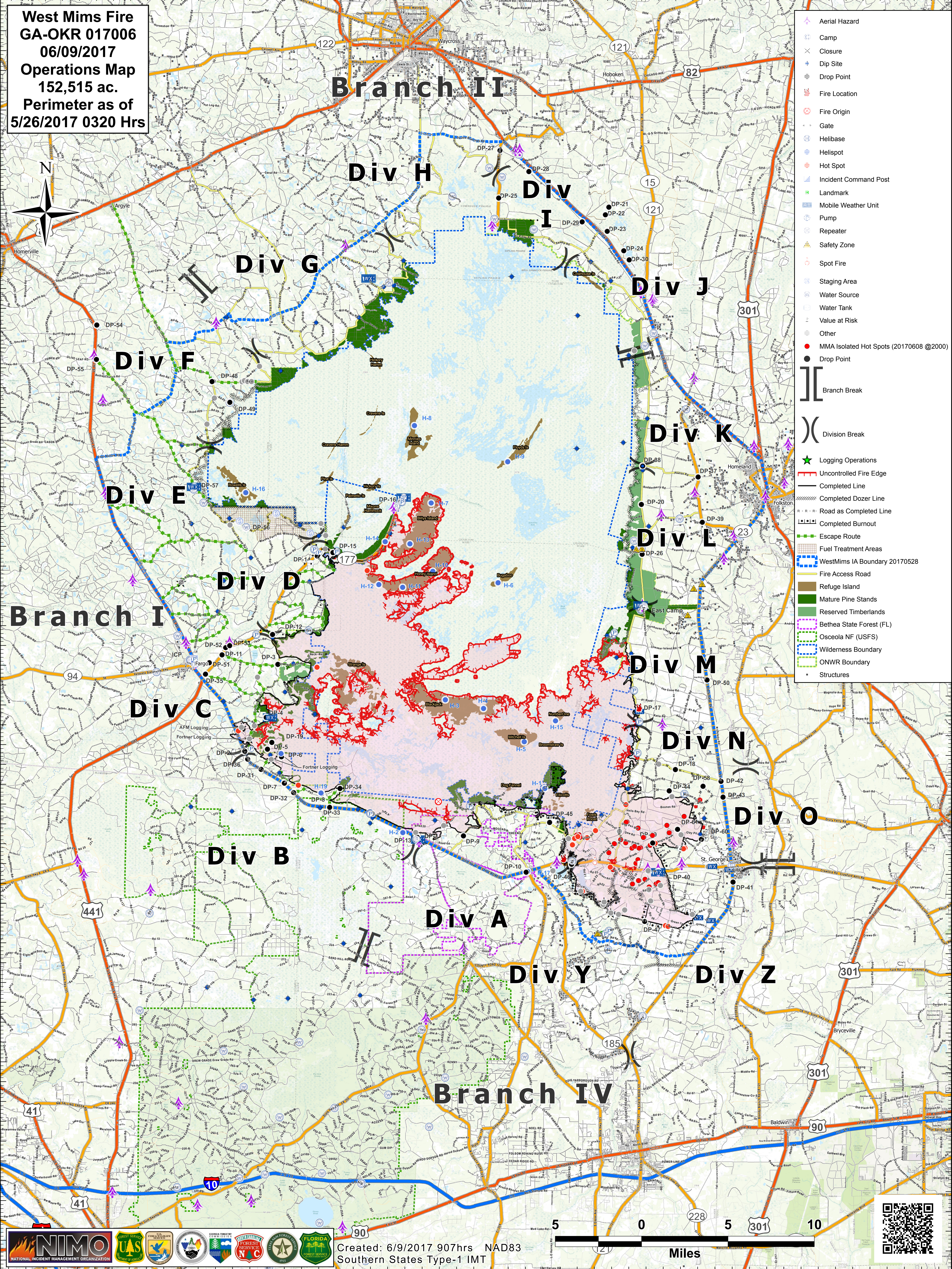
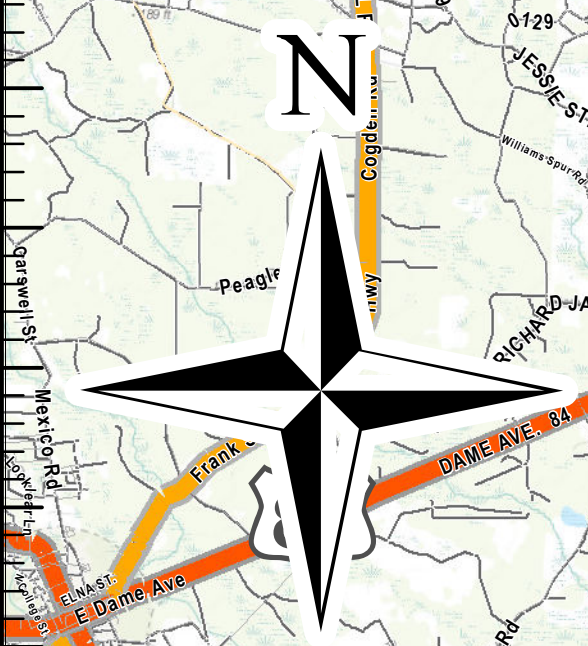


West Mims Fire
GA-OKR 017006
06/09/2017
Operations Map
152,515 ac.
Perimeter as of
5/26/2017 0320 Hrs



- Aerial Hazard
- Camp
- Closure
- Dip Site
- Drop Point
- Fire Location
- Fire Origin
- Gate
- Helibase
- Helispot
- Hot Spot
- Incident Command Post
- Landmark
- Mobile Weather Unit
- Pump
- Repeater
- Safety Zone
- Spot Fire
- Staging Area
- Water Source
- Water Tank
- Value at Risk
- Other
- MMA Isolated Hot Spots (20170608 @2000)
- Drop Point
- Branch Break
- Division Break
- Logging Operations
- Uncontrolled Fire Edge
- Completed Line
- Completed Dozer Line
- Road as Completed Line
- Completed Burnout
- Escape Route
- Fuel Treatment Areas
- WestMims IA Boundary 20170528
- Fire Access Road
- Refuge Island
- Mature Pine Stands
- Reserved Timberlands
- Bethesda State Forest (FL)
- Osceola NF (USFS)
- Wilderness Boundary
- ONWR Boundary
- Structures



Created: 6/9/2017 907hrs NAD83
 Southern States Type-1 IMT

