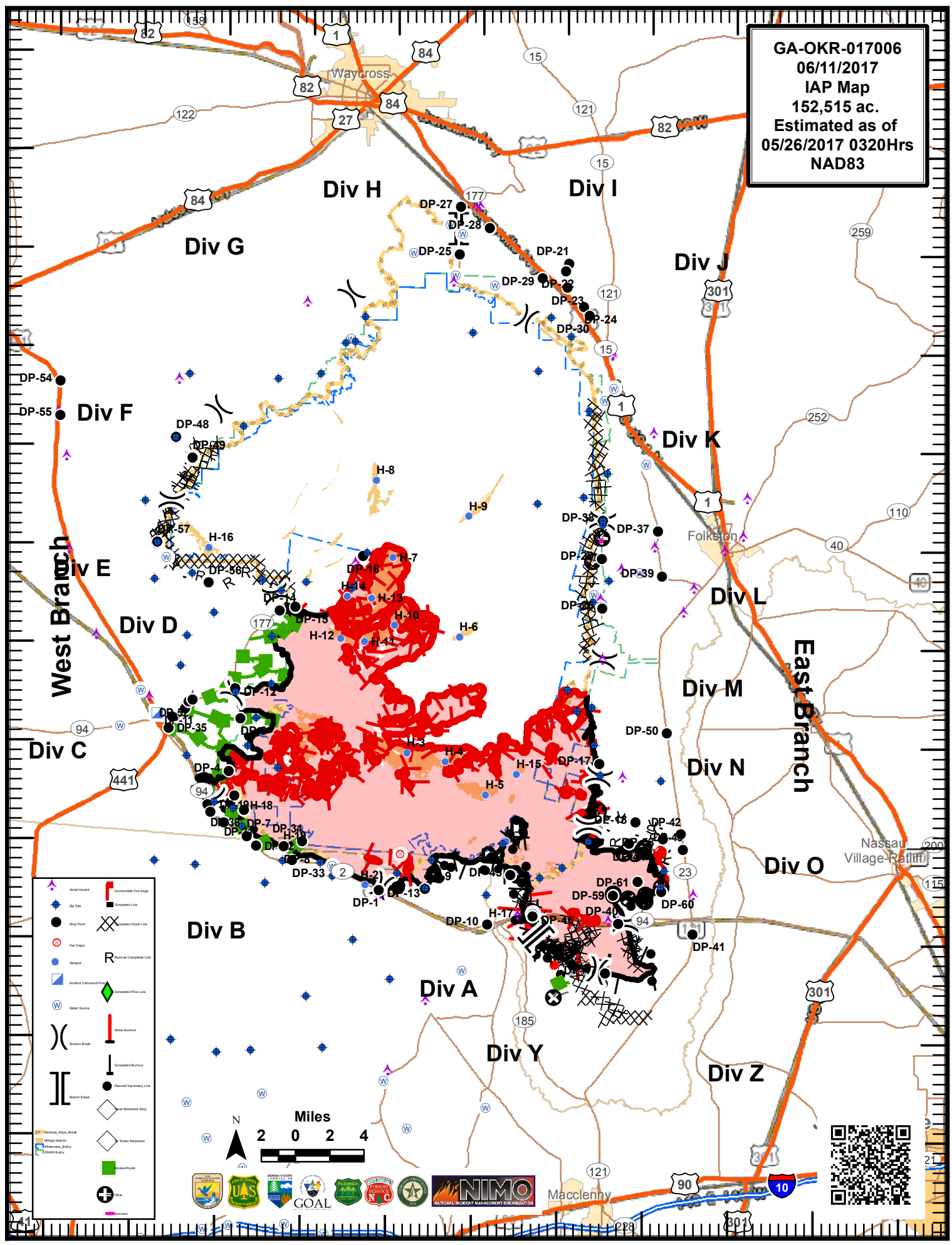


82°40'W 82°35'W 82°30'W 82°25'W 82°20'W 82°15'W 82°10'W 82°5'W 82°0'W 81°55'W 81°50'W

31°15'N 31°10'N 31°05'N 31°00'N 30°55'N 30°50'N 30°45'N 30°40'N 30°35'N 30°30'N 30°25'N 30°20'N 30°15'N

GA-OKR-017006
06/11/2017
IAP Map
152,515 ac.
Estimated as of
05/26/2017 0320Hrs
NAD83



Div G

Div H

Div I

Div J

Div F

Div K

West Branch

Div D

Div L

East Branch

Div C

Div M

Div N

Div B

Div A

Div Y

Div Z



82°40'W 82°35'W 82°30'W 82°25'W 82°20'W 82°15'W 82°10'W 82°5'W 82°0'W 81°55'W 81°50'W