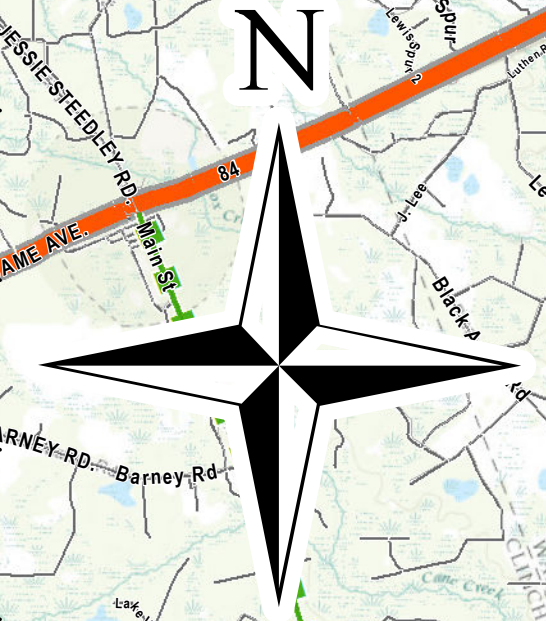
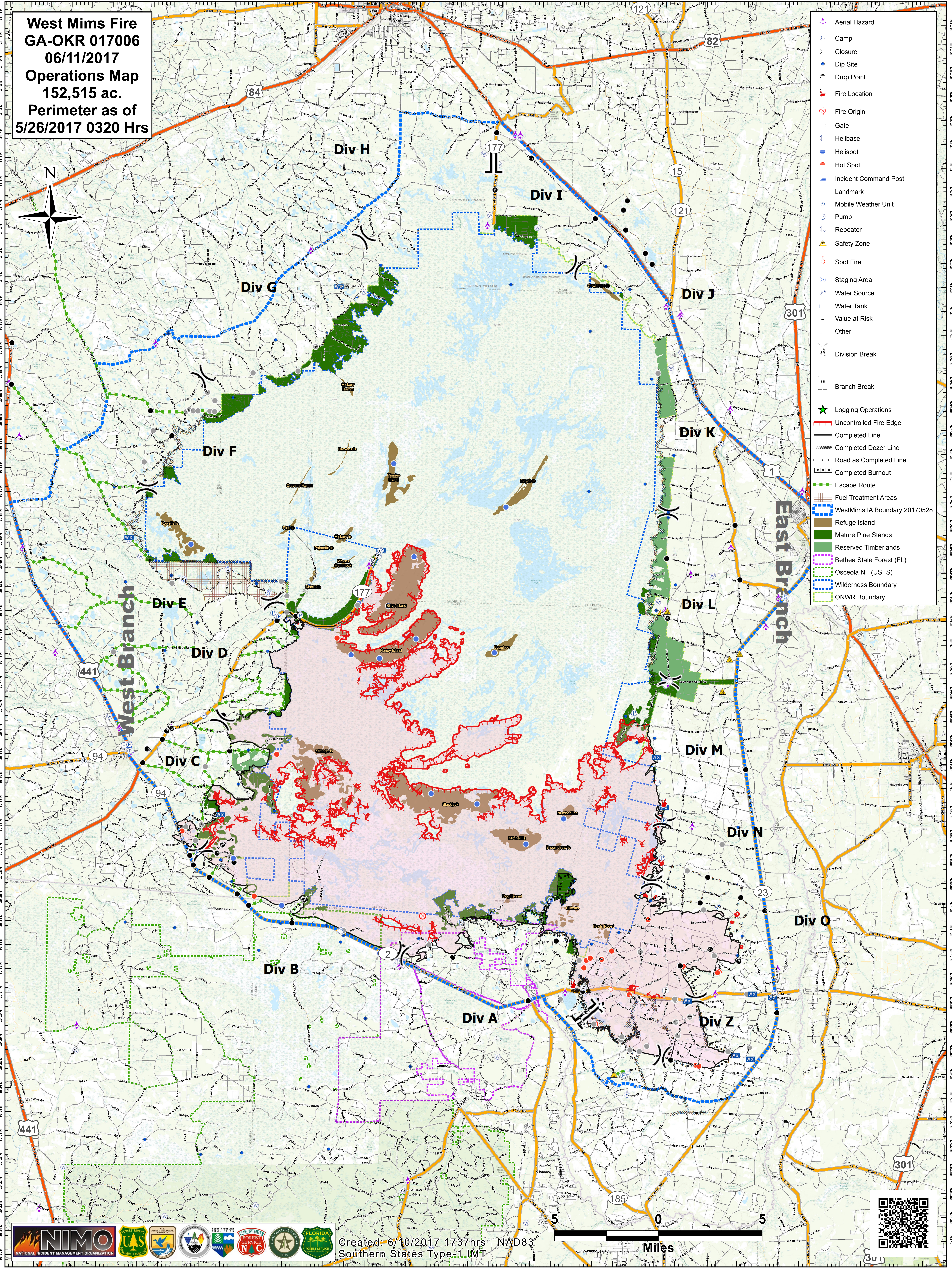


West Mims Fire
GA-OKR 017006
06/11/2017
Operations Map
152,515 ac.
Perimeter as of
5/26/2017 0320 Hrs



- Aerial Hazard
 - Camp
 - Closure
 - Dip Site
 - Drop Point
 - Fire Location
 - Fire Origin
 - Gate
 - Helibase
 - Helispot
 - Hot Spot
 - Incident Command Post
 - Landmark
 - Mobile Weather Unit
 - Pump
 - Repeater
 - Safety Zone
 - Spot Fire
 - Staging Area
 - Water Source
 - Water Tank
 - Value at Risk
 - Other
-
- Division Break
 - Branch Break
 - Logging Operations
 - Uncontrolled Fire Edge
 - Completed Line
 - Completed Dozer Line
 - Road as Completed Line
 - Completed Burnout
 - Escape Route
 - Fuel Treatment Areas
 - WestMims IA Boundary 20170528
 - Refuge Island
 - Mature Pine Stands
 - Reserved Timberlands
 - Bethesda State Forest (FL)
 - Osceola NF (USFS)
 - Wilderness Boundary
 - ONWR Boundary



West Branch

East Branch



Created: 6/10/2017 1737hrs NAD83
 Southern States Type 1 IMT

