

# West Mims Fire

## Incident Action Plan

*Day*

Operational Period

May 13, 2017

0730 – 1930



QR for IAP



GA-OKR-017006

FWS FFF2000000KYJ70

USFS PRKYJ717\_1502 (P)

NPS PFFSKJ7017.00.1

QR for Maps



### Schedule

0730 Morning Briefing  
1200 C & G  
1500 Pre Planning Meeting  
1700 Planning Meeting  
1800 Night Briefing @ Bethea



## INCIDENT OBJECTIVES (ICS 202)

<b>1. Incident Name:</b>	<b>2. Operational Period: DAY SHIFT 0830-2030</b>	
WEST MIMS	Date/Time From: 05/13/2017 0730 SAT	Date/Time To: 05/13/2017 1930 SAT
<b>3. Objective(s):</b>		
<ul style="list-style-type: none"> <li>• Provide for the safety and security of incident personnel and public in all incident operations through sound risk assessment and hazard mitigations.</li> <li>• Maintain a positive working relationship with all adjacent landowners, cooperators State and Federal partners. Inform, involve and communicate incident planning and operations with all partners.</li> <li>• Confine all fires that are within the Okefenokee National Wildlife Refuge, inside the Refuge and/or inside the swamp edge break if possible. Aggressively suppress all fire outside the swamp edge boundary.</li> <li>• In cooperation with local timberland owners, use full suppression strategies and tactics to minimize damage to private timberlands and improvements and to prevent fires outside the Refuge from entering the Refuge.</li> <li>• Assist in management and suppression of additional fires (new starts or breakouts) in the vicinity as approved by Agency Administrators and Unified Incident Commanders.</li> <li>• Protect all cultural and archeological sites and structures within the refuge.</li> <li>• Manage the fires cost-effectively consistent with the values at risk.</li> <li>• Implement structure protection as necessary for at-risk facilities and communities.</li> <li>• Coordinate suppression actions with assigned Refuge Resource Advisors to protect endangered species.</li> <li>• Conduct all operations in a harassment-free environment. There will be a no tolerance atmosphere for harassment, alcohol, or illegal drug use. Everyone will be treated with dignity and respect.</li> </ul>		
<b>4. Operational Period Command Emphasis:</b>		
Branch IV Keep fire East of the North Prong of St Mary's river; West of Nassau county Florida; and North of Baker county Florida Branch III Keep fire North of Hwy 94, West of St Mary's River, and South of #19 road Keep fire within the Okefenokee Refuge Swamp Edge Break Boundary. Respond to initial attack fires on new starts within: *South of Suwannee Canal *Within the Okefenokee jurisdictional boundaries *Within state properties inside Perimeter Road		
<b>General Situational Awareness:</b>		
Utilize confine, contain, and point source protection strategies and tactics that commit operations personnel only where and when they can be successful, under conditions where important values at risk are protected with the least exposure.		
<b>5. Site Safety Plan Required?</b> Yes <input type="checkbox"/> No <input checked="" type="checkbox"/>		
<b>Approved Site Safety Plan(s) Located at:</b>		
<b>6. Incident Action Plan</b> (the items checked below are included in this Incident Action Plan):		
<input checked="" type="checkbox"/> ICS 202 <input checked="" type="checkbox"/> ICS 203 <input checked="" type="checkbox"/> ICS 204 <input checked="" type="checkbox"/> ICS 205 <input type="checkbox"/> ICS 205A <input checked="" type="checkbox"/> ICS 206	<input type="checkbox"/> ICS 207 <input checked="" type="checkbox"/> ICS 208 <input checked="" type="checkbox"/> ICS 220 <input checked="" type="checkbox"/> Map/Chart <input checked="" type="checkbox"/> Weather Forecast/Tides/Currents	<b>Other Attachments:</b> <input checked="" type="checkbox"/> PIO MESSAGE <input checked="" type="checkbox"/> FINANCE MESSAGE <input checked="" type="checkbox"/> TENTATIVE DEMOB <input checked="" type="checkbox"/> MAP
<b>7. Prepared by:</b> BRIAN ELDREDGE	<b>Position/Title:</b> PSC1	<b>Signature:</b>
<b>8. Approved by Incident Commander:</b>		<b>Signature:</b>
<b>ICS 202</b>	<b>IAP Page</b>	<b>Date/Time:</b>

## ORGANIZATION ASSIGNMENT LIST (ICS 203)

<b>1. Incident Name:</b>		<b>2. Operational Period:</b> DAY SHIFT 0830-2030	
WEST MIMS		Date/Time From: 05/13/2017 0730	Date/Time To: 05/13/2017 1930
		SAT	SAT
<b>3. Incident Commander(s) and Command Staff:</b>		ANALYST; AIR RESOURCE ADVISOR	
IC/UC	MICHAEL DUEITT; BUCK KLINE; RICK DOLAN MIKE GOICOECHEA (T)	FILBERT (T) DAN BYRD; THSP-ARA	
		<b>6. Logistics Section:</b>	
		CHIEF	JOHNNY SMITH; RICK BARRETT (T)
SAFETY OFFICER	BRAD LIDELL; MICHAEL COOK; TONY RIVERS (T); CHARLIE PATTERSON (T)	LOGS CHIEF EAST	MICHAEL BURCHARD
INFORMATION OFFICER	CATHERINE HIBBARD; BONNIE STRAWSER; MICHAEL DAVIS (T)	SERVICE BRANCH DIRECTOR	JOE WALKER
LIAISON OFFICER	JD LEE, KEITH LAWRENCE ANDY GASTON	SUPPLY UNIT	MARK MORGAN
		FACILITIES UNIT	ISH ENNIS
		GROUND SUPPORT UNIT	PATRICK WRIGHT; CHARLES WEATHERS
<b>4. Agency/Organization Representative(s):</b>		COMMUNICATIONS UNIT	JERRY PATRICK; BARRY STEARNS (T)
<b>Agency/Organization</b>	<b>Name</b>	MEDICAL UNIT	FRED ALDER
GFC PROTECTION	FRANK SORRELLS	COMT	RAY ADAMS; ROY FORTENBERRY
OKE REF MGR/ASSIST	MICHAEL LUSK; SARA CLARDY	FOOD UNIT	ANDREW BOGGS
OKE REF FMO	REESE KERBOW	ORDM	NINA GAINEY; LISA MEEKINS (T)
GOAL	JIM BARRETT	RCDM	JOHN HAWKINS; JIM GACEY; MARC PRATT (T)
FLDOF	JOHN RAULERSON	EQPM	KIRBY HENNINSEN; JASON MCHAN
GEMA	DIANE ADAMS	RADO	
NORFOLK SOUTHERN	CHAD EDWARDS	<b>7. Operations Section:</b>	
CLINCH CO EMA	WILL JOYCE; RANDY PATTEN	OPS SECTION CHIEF	JIM DURRWACHTER; LARRY SMITH (T) SHANNON BOWMAN (T)
CHARLTON CO EMA	BRUCE YOUNG	PLANNING OPS	STEVE WEAVER JEREMY BRAND (T)
GADOT	TREVOR BROWN	NIGHT OPS SECTION CHIEF (BRANCH I)	JAMES SCHWARTZ
<b>5. Planning Section:</b>		NIGHT OPS SECTION CHIEF (BRANCH III & VI)	PETE MYERS
CHIEF	BRIAN ELDREDGE TERRY PIERCE	<b>Branch</b>	<b>I</b>
PSC2	JASON BRAUNSTEIN (T)	BRANCH DIRECTOR DAY	DARRELL MILLER
RESOURCES UNIT	MISSY FORDER; DONNA THOMAS TIFFANY PATE	DIVISION/GROUP	DIV B TIM STILTNER; DAVID QUESINBERRY (T)
STATUS CHECKIN	CARLA ROBERTS; SUE SOBIESKI; SHANEEN MOORE (T); BRANDEN TOLVER (T)	DIVISION/GROUP	DIV C BERT PLANTE; ROBERT CLAYTOR (T)
SITUATION UNIT	TERRY BOWERMAN KEVIN HIERS (T)	DIVISION/GROUP	DIV D JOEL BURGETT, SHELLY CROOK GREG TOLL
DEMOBILIZATION UNIT	KAREN DAVIS, DAVID BROWN DALE WINE (T)	DIVISION/GROUP	FL FFS CONTINGENCY GLEN DAVIS; JOHN RAULERSON
DOCUMENTATION UNIT	JAN FLEMING	DIVISION/GROUP	WEST ROAD MAINTENANCE CHARLES DAVIS
ITSS	TONY FARMER, CORY NICOLSON TERRANCE CHAPLIN (T)	DIVISION/GROUP	DIV NIGHT B/C PAUL MANCUSO
TRAINING SPECIALIST	LARRY MOORE, JR	DIVISION/GROUP	DIV NIGHT D/E RUSSELL COPP
GIS SPECIALIST	ANDREW THOMPSON, DAVID JONES KEVIN WINTER		
INCIDENT METEOROLOGIST	JOE GOUDSWARD		
FIRE BEHAVIOR	GARY JARVIS; KELLY CAGLE, MATT		
<b>9. Prepared By:</b>	<b>Name:</b> DONNA THOMAS	<b>Position/Title:</b> RESL	<b>Signature:</b>
ICS 203	IAP Page	<b>Date/Time:</b> 05/12/2017 2000	

## ORGANIZATION ASSIGNMENT LIST (ICS 203)

<b>1. Incident Name:</b>		<b>2. Operational Period:</b> DAY SHIFT 0830-2030	
WEST MIMS		Date/Time From: 05/13/2017 0730	SAT Date/Time To: 05/13/2017 1930 SAT
DIVISION/GROUP	NIGHT STRUCTURE	CHRIS OBRIEN	PROCUREMENT UNIT
<b>Branch</b>	<b>II</b>		JAMES MEREDITH; THERESA HOOD
<b>Branch</b>	<b>III</b>		CONTRACTING OFFICER THERESA HOOD
PLANNING OPERATIONS CHIEF	DAVE WALKER		COST UNIT CAROLYN DETWILER; JENNY CROSS (T)
BRANCH DIRECTOR	RON SMITH		TIME UNIT JEAN FRICK
BRANCH DIRECTOR NIGHT	ROBERT TRINCADO		COMPENSATION UNIT VERMA COLEMAN STACEY EATON (T)
DIVISION/GROUP	M/N	BRIAN BROWNING, JASON LAGO SAM MCFARLAND, SUNBEAR VIERRA	LOCAL FINANCE LIAISON REGGIE LANIER
DIVISION/GROUP	O	ROBERT THORP BRANDON HUGHES (T)	
DIVISION/GROUP	IA	DONNIE HARRIS	
DIVISION/GROUP	DIV NIGHT M/N	UNSTAFFED	
DIVISION/GROUP	DIV NIGHT O	MICHAEL CACHERO	
<b>Branch</b>	<b>IV</b>		
PLANNING OPERATIONS CHIEF	DAVE WALKER		
BRANCH DIRECTOR	STEVE MILLER		
NIGHT BRANCH DIRECTOR	ROBERT LAENG		
DIVISION/GROUP	A	JAMES ROURKS	
DIVISION/GROUP	Y	JOE MORRIS	
DIVISION/GROUP	Z	TRENT INGRAM	
DIVISION/GROUP	DAY STRUCTURE PROTECTION	CRAIG ROBERTSON RANDY JONES	
DIVISION/GROUP	CONTINGENCY	BLAIR JOINER CHAD WILLIAMSON	
ROAD MAINTENANCE BRANCH III AND IV	CHARLES DAVIS		
DIVISION/GROUP	DIV NIGHT A	JOHN MOLVE	
DIVISION/GROUP	DIV NIGHT Z	SHANE STURGILL	
DIVISION/GROUP	NIGHT STRUCTURE PROTECTION	HAROLD KIBBE JOHN ALLBRIGHT (T)	
<b>7b. Air Operations Branch:</b>			
AIR OPS BRANCH DIRECTOR	TIMOTHY FAUST		
AIR SUPPORT GROUP SUPERVISOR	JOHN MASON		
AIR ATTACK SUPERVISOR	MARK NUNEZ; CHRIS WORREL; MIKE BOT (T) DEREK WHEELER (T)		
HEB1 POGO	MARC RUDKIN		
<b>8. Finance/Administration Section:</b>			
CHIEF	BONNY JOHNSON		
<b>9. Prepared By:</b>	<b>Name:</b> DONNA THOMAS	<b>Position/Title:</b> RESL	<b>Signature:</b>
ICS 203	IAP Page	<b>Date/Time:</b> 05/12/2017 2000	



**To: All Incident Personnel, West Mims Fire 2017**

As the Unified Command Incident Commanders, we have a policy of “zero tolerance” of inappropriate behavior during incident operations. Any form of harassment, discriminatory practices, or disrespectful behavior will not be tolerated. Known or reported acts will be dealt with appropriately.

We are particularly concerned about the perception that alcohol has a place in any of the Incident facilities. It is not appropriate to indulge in alcoholic beverages during any fire assignment.

The National Team from the Southern Region has a policy of “NO ALCOHOL” from the time of dispatch until the time of physical release from the Incident. Members of the Team voluntarily comply with this policy; all incident personnel will be expected to do so also.

We endorse, support, and expect an attitude of mutual respect for all Incident personnel and the public we serve. We also, endorse the attitude and work ethic that places “Safety First, every time on every Incident.” We expect nothing less.

/s/ Mike Dueitt /s/ Rick Dolan /s/ Trent Ingram Incident Commanders
--



# Fire Weather Forecast



**FORECAST NO: 29**  
**PREDICTION FOR: Saturday Shifts**  
**SHIFT DATE: May 13, 2017**  
**FORECAST ISSUED: 1800 May 12, 2017**

**NAME OF FIRE: West Mims Fire**  
**UNIT: Okefenokee National Wildlife Refuge**  
**Incident Meteorologist: Angie Enyedi/Joe Goudswaard 240-778-5279**

## **WEATHER WATCH OUT: THUNDERSTORM POTENTIAL TODAY THEN COLD FRONT PASSAGE**

**DISCUSSION:** Cloudy skies, more mild temperatures, and higher humidity are expected compared to recent days across the West Mims in advance of a cold front. Scattered showers and thunderstorms will near the fire area during the morning, then a second round of thunderstorms is possible in the late afternoon. SW winds will increase to 10-15 mph with gusts up to 25 mph today. The cold front will push south of the fire complex after midnight tonight, which will bring a wind shift from the west to the north through sunrise as rain chances gradually decrease.

### **TODAY (SATURDAY DAY SHIFT):**

- WEATHER: Cloudy and breezy. Scattered passing showers and thunderstorms. Lightning and erratic wind shifts can be expected from thunderstorms, even well away from where the storm is producing rainfall.
- WIND (20 FT): SW winds 10-15 mph, gusts up to 25 mph. Higher gust potential from thunderstorm outflows.
- MAX TEMPERATURES: 84-87
- LAL: 3
- MIXING HEIGHT: 5200
- MIN RH: 40-50%
- DISPERSION (MAX): 85
- CHANCE RAIN: 40%
- RAINFALL: up to 0.25"
- TRANSPORT WINDS: WSW 25-30 mph

### **TONIGHT (SATURDAY NIGHT SHIFT):**

- WEATHER: Mostly cloudy with a chance of a thunderstorm before midnight, then a low chance of passing showers midnight to sunrise. Winds will shift after midnight from W to N following the frontal passage.
- WIND (20 FT): WSW 5-10 mph shifting N after midnight through sunrise 5-10 mph.
- MIN TEMPERATURES: 60-65
- LAL: 1
- MAX RH: 90-100%
- CHANCE OF RAIN: 30%
- MAX LVORI: 6
- RAINFALL: up to 0.25"

### **HOURLY WEATHER FORECAST (LST) Saturday 1000 through Sunday 0800**

Time	1000	1200	1400	1600	1800	2000	2200	2400	0200	0400	0600	0800
Temp °F	76	83	86	85	81	76	71	68	66	62	61	64
RH %	67	55	43	50	55	85	90	95	100	100	100	95
Wind Dir	SW	SW	SW	SW	SW	SW	WSW	WSW	W	VRB	NNW	N
Wind Spd mph	10	12	14	13	11	8	5	5	4	3	4	4
Wind Gst mph	15	20	22	24	20	15	8	7	6	6	7	7
Rain Chance%	30	30	40	40	40	30	30	30	20	20	10	10
Weather	Tstm	Tstm	Tstm	Tstm	Tstm	Tstm	Shwr	Shwr	Shwr	Shwr	Shwr	Shwr

Tstm = Thunderstorm

Shwr = Shower

### **SUNDAY:**

- WEATHER: Decreasing clouds becoming mostly sunny by afternoon. A small chance of a morning shower.
- WIND (20 FT): NNE 5-10 mph becoming E in the afternoon.
- MAX TEMPERATURES: 84-89
- LAL: 1
- MIXING HEIGHT: 5500
- MIN RH: 30-40%
- DISPERSION (MAX): 55
- CHANCE RAIN: 20%
- RAINFALL: < 0.10"
- TRANSPORT WINDS: NNE 10 mph

**Sunrise Saturday: 6:37 am**

**Sunset Saturday: 8:16 pm**

**Sunrise Sunday: 6:36 am**

### **RAWS Observations:**

Jones  
Island



Eddy  
Tower



OKE  
East



OKE  
NW



**FIRE BEHAVIOR FORECAST**

<b>FORECAST NUMBER: #24</b>	<b>TYPE OF FIRE: Wildland</b>
<b>FIRE NAME: West Mims</b>	<b>OPERATIONAL PERIOD: 05/13/2017</b>
<b>DATE ISSUED: 05/12/2017</b>	<b>TIME ISSUED: 1800</b>
<b>UNIT: Okfeenokee National Wildlife Refuge</b>	<b>Written: Kelly Cagle FBAN (t) Signed: Gary Jarvis FBAN</b>

**FUEL ASSUMPTIONS:** Timber with shrub understory (pine plantation) will be the most active fuel type. Re-burn potential is very high. Current fuel conditions are favorable for very active to extreme fire behavior within all fuel types. Expect all fuels to burn readily, including those that appear green. Once fire becomes established, expect it to continue to run until it runs out of fuel.

**The fuel moisture for today is:**  
 Calculated 1 hr fuel 7%, 10 hr fuel 7%, 100 hr fuel 14%

**ERC levels have been trending at or above 97 Percentile KBDI – 733**

**Critical fire behavior thresholds:** 1 HR Fuel Moisture <6%, RHs below 40% and a Dispersion Index greater than 60.

**WEATHER:** Cloudy and breezy. Scattered passing showers and T storms. Lightning and erratic wind shifts can be expected from T storms even well away from where the storm is producing rainfall.  
 Winds (20 ft):SW 10-15 with gusts to 25. Higher gusts near thunderstorms. Temps 84-87 RH 40-50%  
 Chance of Rain 40% Amount: Up to .25” Mixing Ht 5200 Transport Winds WSW 25-30 Dispersion 85

**General Fire Behavior Forecast: Extreme burning conditions! Winds are forecast to increase today, which will add to an already volatile fuel situation. Expect rapid development and intense fire behavior in any areas of available fuel. Long range spotting and high rates of spread will occur once fire is established in areas of pine plantation with shrub understory. Control lines will be tested. This fire on multiple occasions has produced flame lengths in excess of 100 feet and spotting distances of 1 mile.**

**SPECIFICS:** With southwesterly winds, re-burn will be pushed towards containment lines in Divisions M N O. Fire in actual swamp is pushing towards Divisions M L K and could reach Swamp Edge Break today. Fire will remain active with potential in Divisions A Z.  
 Other divisions – smoldering, creeping, and re-burn. Reb-burn potential is very high.  
 Initial Attack – Expect rapid development and high intensity on any new starts.

**PREDICTIONS FOR MOST ACTIVE TIME OF PEAK BURNING PERIOD USING WEATHER FROM INCIDENT IMET**

<b>Fuel Model</b>	<b>Fire Behavior</b>
SH 3 (shrub in the swamp)	ROS 13 to 30 ch/hr FL 4 to 7 feet average
7 (Timber w/shrub palmetto)	ROS 44 to 87 ch/hr FL 8 to 11 feet average
8 Timber Litter (Pine needles in re-burn areas)	ROS 2 to 5 ch/hr FL 2 to 3 ft. (higher Flame lengths should be expected where shrub component remains and consumes)
Spotting	Spotting of a quarter of a mile or greater is possible today
Probability of Ignition	60%

**AIR OPERATIONS:** Passing showers and thunderstorms will temporarily lower ceilings and visibility. Lightning and gusty, erratic winds are possible today.

**FIRE BEHAVIOR SAFETY:** Thunderstorms could impact the fire area today. Outflow winds could increase fire behavior and lightning could pose a threat to your safety!

## Division/Group Assignment List (ICS 204 WF)

<b>1. Incident Name:</b>			<b>3.</b>			
WEST MIMS			<b>I</b>		<b>B</b>	
<b>2. Operational Period:</b> DAY SHIFT 0830-2030						
Date/Time From: 05/13/2017 0730 SAT		Date/Time To: 05/13/2017 1930 SAT				
<b>4. Operations Personnel</b>						
<b>PLANNING OPERATIONS CHIEF</b>		STEVE WEAVER JEREMY BRAND (T)		<b>OPERATIONS CHIEF</b>		JIM DURRWACHTER L. SMITH (T); S. BOWMAN (T)
<b>BRANCH DIRECTOR</b>		DARRELL MILLER		<b>DIVISION/GROUP SUPERVISOR</b>		TIM STILTNER, DAVID QUISENBERRY (T)
<b>SAFETY</b>		BRAD LIDELL; MIKE COOK TONY RIVERS (T)		<b>AIR OPS BRANCH DIRECTOR</b>		TIM FAUST
<b>5. Resources Assigned this Period</b>						
Strike Team / Task Force / Resource Designator		LWD	Leader	Number Persons	Drop Off PT./Time	Pick Up PT./Time
STEQ O-498		05/25	WILLIE MICHAEL HOGGARD	1	DP 2/0800	DP 2/2000
STEN O-325		05/19	JOE FOWLER	1	DP 2/0800	DP 2/2000
TFLD O-359		05/21	TRAVIS WRIGHT	1	DP 2/0800	DP 2/2000
TFLD (T) O-340		05/20	BRAD WHITTINGTON	1	DP 2/0800	DP 2/2000
ENG6 - AR-OZF - PH - E-641 E-76		05/21	MIKE KOCH	3	DP 2/0800	DP 2/2000
ENG6- SMR #4461 E-1		05/26	MEGAN BIEBER	2	DP 2/0800	DP 2/2000
ENG6 - NC-POR PLE1 E-2		05/21	ANTHONY DAVIS	2	DP 2/0800	DP 2/2000
ENG6 SOUTHEAST FOREST RESOURCES E-58		05/30	HAWTHORNE	3	DP 2/0800	DP 2/2000
WTS1- SUPPORT WILDLANDS FIRE SERVICE I E-132		05/14	DAVID SWEENY	1	DP 2/0800	DP 2/2000
STEN O-353		05/21	ANDREW C MILLER	1	DP 2/0800	DP 2/2000
ENG6 - SCS #14248 E-148		05/15	JEREMY GANTT	2	DP 2/0800	DP 2/2000
ENG6 - WILDLANDS FIRE SERVICE - D65331 - 1 E-144		05/24	MICHAEL MADISON	2	DP 2/0800	DP 2/2000
SOF2 O-252 208-954-4105		05/31	CHRIS CHURCH	1	DP 2/0800	DP 2/2000
EMPF E-316 619-933-5546		05/16	MARTIN CORRILO	1	DP 2/0800	DP 2/2000
STPS O-18.10		05/17	BILL KORNRUMPH	1	DP 2/0800	DP 2/2000
<b>6. Control Operations/Work Assignments:</b>						
<b>8. Division/Group Communication Summary</b>						
Function	Channel	RX Frequency N/W	RX Tone/NAC	TX Frequency N/W	TX Tone/NAC	Mode
COMMAND	2	159.1200N	NONE	151.3700N	100.0	A
AIR TO GROUND	4	169.2000N	NONE	169.2000N	NONE	A
TACTICAL	9	159.2850N	NONE	159.2850N	156.7	A
AIR TO GROUND	14	166.6750N	NONE	166.6750N	NONE	A
AIR TO GROUND	15	169.1500N	NONE	169.1500N	NONE	A
AIR GUARD	16	168.6250N	NONE	168.6250N	110.9	A
<b>9. Prepared By (Resource Unit Leader)</b>			<b>Approved By (Planning Section Chief)</b>		<b>Date</b>	<b>Time</b>
DONNA THOMAS			BRIAN ELDREDGE		05/12/2017	0951



## Division/Group Assignment List (ICS 204 WF)

<b>1. Incident Name:</b>			<b>3.</b>			
WEST MIMS			<b>I</b>	<b>B</b>		
<b>2. Operational Period:</b> DAY SHIFT 0830-2030						
Date/Time From: 05/13/2017 0730 SAT		Date/Time To: 05/13/2017 1930 SAT				
<b>4. Operations Personnel</b>						
<b>PLANNING OPERATIONS CHIEF</b>		STEVE WEAVER JEREMY BRAND (T)		<b>OPERATIONS CHIEF</b>		JIM DURRWACHTER L. SMITH (T); S. BOWMAN (T)
<b>BRANCH DIRECTOR</b>		DARRELL MILLER		<b>DIVISION/GROUP SUPERVISOR</b>		TIM STILTNER, DAVID QUISENBERRY (T)
<b>SAFETY</b>		BRAD LIDELL; MIKE COOK TONY RIVERS (T)		<b>AIR OPS BRANCH DIRECTOR</b>		TIM FAUST
<b>6. Control Operations/Work Assignments:</b>						
<b>Purpose: Keep fire North of GA 94/FL 2</b>						
<b>Task: Patrol and mop up within 50 ft of fire perimeter. Respond to any new starts within Div. Determine and report contained line to Planning OSC1.</b>						
<b>End State: Confine fire perimeter to reduce threats and minimize damage to private timberlands and resources values at risk.</b>						
<b>7. Special Instructions:</b>						
Ensure LCES is in place before operations begin and stay hydrated. Drive defensively and with lights on at all times. Identify escape routes.						
Medical Emergency Channel: Command ETA for Ambulance to Scene: Air: 10 mins Ground: 15 mins Approved Helispot: Drop Point 1 Lat: N 30 30.929 Long: W 82 14.174 <b>Primary</b> - Ambulance is ground contact with air ambulance <b>Secondary</b> - IWI- IC or approved person will use channel 16 (Air Guard) for ground contact with air ambulance						
<b>8. Division/Group Communication Summary</b>						
Function	Channel	RX Frequency N/W	RX Tone/NAC	TX Frequency N/W	TX Tone/NAC	Mode
COMMAND	2	159.1200N	NONE	151.3700N	100.0	A
AIR TO GROUND	4	169.2000N	NONE	169.2000N	NONE	A
TACTICAL	9	159.2850N	NONE	159.2850N	156.7	A
AIR TO GROUND	14	166.6750N	NONE	166.6750N	NONE	A
AIR TO GROUND	15	169.1500N	NONE	169.1500N	NONE	A
AIR GUARD	16	168.6250N	NONE	168.6250N	110.9	A
<b>9. Prepared By (Resource Unit Leader)</b>			<b>Approved By (Planning Section Chief)</b>		<b>Date</b>	<b>Time</b>
DONNA THOMAS			BRIAN ELDREDGE		05/12/2017	0951

## Division/Group Assignment List (ICS 204 WF)

<b>1. Incident Name:</b>			<b>3.</b>			
WEST MIMS			<b>I</b>		<b>C</b>	
<b>2. Operational Period:</b> DAY SHIFT 0830-2030						
Date/Time From: 05/13/2017 0730 SAT		Date/Time To: 05/13/2017 1930 SAT				
<b>4. Operations Personnel</b>						
<b>PLANNING OPERATIONS CHIEF</b>		STEVE WEAVER JEREMY BRAND (T)		<b>OPERATIONS CHIEF</b>		
				JIM DURRWACHTER L. SMITH (T), S. BOWMAN (T)		
<b>BRANCH DIRECTOR</b>		DARRELL MILLER		<b>DIVISION/GROUP SUPERVISOR</b>		
				BERT PLANTE, ROBERT CLAYTOR (T)		
<b>SAFETY</b>		BRAD LIDELL, MICHAEL COOK TONY RIVERS (T)		<b>AIR OPS BRANCH DIRECTOR</b>		
				TIM FAUST		
<b>5. Resources Assigned this Period</b>						
Strike Team / Task Force / Resource Designator		LWD	Leader	Number Persons	Drop Off PT./Time	Pick Up PT./Time
CREW - T2IA - PATRICK ENVIRONMENTAL, INC. - NCC - 20A C-11		05/22	WADE KEMP	20	DP 3/0800	DP 3/2000
ENG6 - WILDLANDS FIRE SRVC INC-162856 - 22 E-146		05/22	BRIAN TERRY	3	DP 3/0800	DP 3/2000
ENG6 E-454		05/21	TYLER GALLAGHER	2	DP 3/0800	DP 3/2000
ENG6 - 61 - VASHP E-450		05/21	JOE JARRELLS	3	DP 3/0800	DP 3/2000
ENG6-ATTACK-ONE FIRE MGMT SRVC INC E-457		05/21	WAYNE TAYLOR	2	DP 3/0800	DP 3/2000
ENG6 SHOAL CREEK - E651 E-78		05/24	WILLIAM LAYFIELD	3	DP 3/0800	DP 3/2000
ENG6 - WILDLANDS FIRE SRVC INC - A57267 - 8 E-459		05/21	DOUG SCOTT	3	DP 3/0800	DP 3/2000
ENG4 - NC-NCS - PP-1434 - D3 E-542		05/23	WALTER GORDON	2	DP 3/0800	DP 3/2000
WTS2 - SUPPORT TIPTON & YOUNG E-135		05/31	KEN SWAIN	1	DP 3/0800	DP 3/2000
WTS2 SUPPORT STRICKLANDS TRACTOR E-265		05/21	LUCIUS CORBITT	1	DP 3/0800	DP 3/2000
TFLD O-349		05/22	JEFF GOYINGS	1	DP 3/0800	DP 3/2000
TFLD O-418		05/23	PAUL AMUNDSON	1	DP 3/0800	DP 3/2000
DOZ2 E-512		05/24	WESLEY WHISENHUNT	1	DP 3/0800	DP 3/2000
STEQ O-558		05/25	DUKE CAMPBELL	1	DP 3/0800	DP 3/2000
TPL2 E-669		05/25	JIMMY ANDERSON	2	DP 3/0800	DP 3/2000
<b>8. Division/Group Communication Summary</b>						
Function	Channel	RX Frequency N/W	RX Tone/NAC	TX Frequency N/W	TX Tone/NAC	Mode
COMMAND	2	159.1200N	NONE	151.3700N	100.0	A
AIR TO GROUND	4	169.2000N	NONE	169.2000N	NONE	A
TACTICAL	6	159.3900N	NONE	159.3900N	156.7	A
TACTICAL	12	159.4425N	NONE	159.4425N	NONE	A
AIR TO GROUND	14	166.6750N	NONE	166.6750N	NONE	A
AIR TO GROUND	15	169.1500N	NONE	169.1500N	NONE	A
AIR GUARD	16	168.6250N	NONE	168.6250N	110.9	A
<b>9. Prepared By (Resource Unit Leader)</b>			<b>Approved By (Planning Section Chief)</b>		<b>Date</b>	<b>Time</b>
DONNA THOMAS			BRIAN ELDREDGE		05/12/2017	0951

## Division/Group Assignment List (ICS 204 WF)

<b>1. Incident Name:</b>			<b>3.</b>			
WEST MIMS			<b>Branch:</b>		<b>Division/Group:</b>	
<b>2. Operational Period:</b> DAY SHIFT 0830-2030			<b>I</b>		<b>C</b>	
Date/Time From: 05/13/2017 0730 SAT		Date/Time To: 05/13/2017 1930 SAT				
<b>4. Operations Personnel</b>						
<b>PLANNING OPERATIONS CHIEF</b>		STEVE WEAVER JEREMY BRAND (T)		<b>OPERATIONS CHIEF</b>		JIM DURRWACHTER L. SMITH (T), S. BOWMAN (T)
<b>BRANCH DIRECTOR</b>		DARRELL MILLER		<b>DIVISION/GROUP SUPERVISOR</b>		BERT PLANTE, ROBERT CLAYTOR (T)
<b>SAFETY</b>		BRAD LIDELL, MICHAEL COOK TONY RIVERS (T)		<b>AIR OPS BRANCH DIRECTOR</b>		TIM FAUST
<b>5. Resources Assigned this Period</b>						
Strike Team / Task Force / Resource Designator		LWD	Leader	Number Persons	Drop Off PT./Time	Pick Up PT./Time
TPL2 E-668		05/25	CLIFF LEWIS	2	DP 3/0800	DP 3/2000
TPL2 E-670		05/25	MATT DUGGAN	2	DP 3/0800	DP 3/2000
DOZ2 - OK-OKS ECU #2178 E-503		05/24	WILLIAM OWENS	1	DP 3/0800	DP 3/2000
EMPF - E-375            470-532-8807		05/16	GARY ALLEN FORD	1	DP 3/0800	DP 3/2000
SOF2 - O-244            229-561-2259		05/13	MICKEY BUNTON	1	DP 3/0800	DP 3/2000
SOF2 O-541		05/25	LOUIE CASAUS	1	DP 3/0800	DP 3/2000
<b>6. Control Operations/Work Assignments:</b>						
<b>Purpose:</b> Keep fire East of swamp edge break.						
<b>Task:</b> Patrol and mop up within 50 ft of fire perimeter. Respond to any new starts within Div. Prep fireline around logging debris as needed coordinating control operations with logging operators. Determine and report contained line to Planning OSC1.						
<b>End State:</b> Confine fire perimeter to reduce threats and minimize damage to private timberlands and resources values at risk.						
<b>7. Special Instructions:</b>						
Ensure LCES is in place before operations begin and stay hydrated. Drive defensively and with lights on at all times. Identify escape routes. Logging operations are continuing. Stay clear of cutting areas. Please be mindful of logging operations that will be ongoing. Ensure that all personnel stay clear of felling operations. Pay attention for potential reburn in logging area. Work with Gilyard Logging foreman on any suppression						
<b>8. Division/Group Communication Summary</b>						
Function	Channel	RX Frequency N/W	RX Tone/NAC	TX Frequency N/W	TX Tone/NAC	Mode
COMMAND	2	159.1200N	NONE	151.3700N	100.0	A
AIR TO GROUND	4	169.2000N	NONE	169.2000N	NONE	A
TACTICAL	6	159.3900N	NONE	159.3900N	156.7	A
TACTICAL	12	159.4425N	NONE	159.4425N	NONE	A
AIR TO GROUND	14	166.6750N	NONE	166.6750N	NONE	A
AIR TO GROUND	15	169.1500N	NONE	169.1500N	NONE	A
AIR GUARD	16	168.6250N	NONE	168.6250N	110.9	A
<b>9. Prepared By (Resource Unit Leader)</b>			<b>Approved By (Planning Section Chief)</b>		<b>Date</b>	<b>Time</b>
DONNA THOMAS			BRIAN ELDREDGE		05/12/2017	0951

## Division/Group Assignment List (ICS 204 WF)

<b>1. Incident Name:</b>			<b>3.</b>			
WEST MIMS			<b>I</b>	<b>C</b>		
<b>2. Operational Period:</b> DAY SHIFT 0830-2030						
Date/Time From: 05/13/2017 0730 SAT		Date/Time To: 05/13/2017 1930 SAT				
<b>4. Operations Personnel</b>						
<b>PLANNING OPERATIONS CHIEF</b>		STEVE WEAVER JEREMY BRAND (T)		<b>OPERATIONS CHIEF</b>		JIM DURRWACHTER L. SMITH (T), S. BOWMAN (T)
<b>BRANCH DIRECTOR</b>		DARRELL MILLER		<b>DIVISION/GROUP SUPERVISOR</b>		BERT PLANTE, ROBERT CLAYTOR (T)
<b>SAFETY</b>		BRAD LIDELL, MICHAEL COOK TONY RIVERS (T)		<b>AIR OPS BRANCH DIRECTOR</b>		TIM FAUST
<b>7. Special Instructions:</b>						
<p><b>actions within the logging area.</b></p> <p>Additional Resources: Superior Pine Tractor Plow D6; SP-83, SP-85, SP-87</p> <p>Medical Emergency Channel: Command ETA for Ambulance to Scene: Air: 10 mins Ground: 25 mins Approved Helispot: Drop Point 3 Lat: N 30 41.257 Long: W 82 28.833</p> <p><b>Primary</b> - Ambulance is ground contact with air ambulance <b>Secondary</b> - IWI- IC or approved person will use channel 16 (Air Guard) for ground contact with air ambulance</p>						
<b>8. Division/Group Communication Summary</b>						
Function	Channel	RX Frequency N/W	RX Tone/NAC	TX Frequency N/W	TX Tone/NAC	Mode
COMMAND	2	159.1200N	NONE	151.3700N	100.0	A
AIR TO GROUND	4	169.2000N	NONE	169.2000N	NONE	A
TACTICAL	6	159.3900N	NONE	159.3900N	156.7	A
TACTICAL	12	159.4425N	NONE	159.4425N	NONE	A
AIR TO GROUND	14	166.6750N	NONE	166.6750N	NONE	A
AIR TO GROUND	15	169.1500N	NONE	169.1500N	NONE	A
AIR GUARD	16	168.6250N	NONE	168.6250N	110.9	A
<b>9. Prepared By (Resource Unit Leader)</b>			<b>Approved By (Planning Section Chief)</b>		<b>Date</b>	<b>Time</b>
DONNA THOMAS			BRIAN ELDREDGE		05/12/2017	0951

## Division/Group Assignment List (ICS 204 WF)

<b>1. Incident Name:</b>			<b>3.</b>			
WEST MIMS			<b>Branch:</b>		<b>Division/Group:</b>	
<b>2. Operational Period:</b> DAY SHIFT 0830-2030			<b>I</b>		<b>D</b>	
Date/Time From: 05/13/2017 0730 SAT		Date/Time To: 05/13/2017 1930 SAT				
<b>4. Operations Personnel</b>						
<b>PLANNING OPERATIONS CHIEF</b>		STEVE WEAVER JEREMY BRAND (T)		<b>OPERATIONS CHIEF</b>		JIM DURRWACHTER L. SMITH (T); S. BOWMAN; (T)
<b>BRANCH DIRECTOR</b>		DARRELL MILLER		<b>DIVISION/GROUP SUPERVISOR</b>		JOE BURGETTE, GREG TOLL SHELLY CROOK
<b>SAFETY</b>		BRAD LIDDEL, MICHAEL COOK TONY RIVERS (T)		<b>AIR OPS BRANCH DIRECTOR</b>		TIM FAUST
<b>5. Resources Assigned this Period</b>						
Strike Team / Task Force / Resource Designator		LWD	Leader	Number Persons	Drop Off PT./Time	Pick Up PT./Time
TFLD O-255		05/13	TROY HELMS	1	DP 3/0800	DP 3/2000
COLQUIT 86 SUPPLY TRUCK 10-460 E-118		05/21	EDWARD WILEY	1	DP 3/0800	DP 3/2000
ENG6 - OSCEOLA - 641 E-157		05/28	JASON MARTIN	3	DP 3/0800	DP 3/2000
ENG6 - WILDLANDS FIRE SERVICE E-262		06/03	CHAD ANDERSON	2	DP 3/0800	DP 3/2000
ENG6 - ATLANTIC WILDFIRE RESOURCES E-264		05/20	SAMUEL ELKINS	3	DP 3/0800	DP 3/2000
STEN O-360		05/21	ERIC WARD		DP 3/0800	DP 3/2000
ENG6 - WILDLANDS FIRE SERVICE INC - 339712-9 E-458		05/21	IRVIN SAUL	3	DP 3/0800	DP 3/2000
TFLD O-416		05/23	CHAD HYATT	1	DP 3/0800	DP 3/2000
TFLD O-511		05/14	KEVIN TOMLINSON	1	DP 3/0800	DP 3/2000
TPL3 - WILDLANDS FIRE SERVICE INC - 75659 E-525		05/24	RONNIE OUIMETTE	2	DP 3/0800	DP 3/2000
TFLD O-419		05/23	GEORGE M LIBERCAJT	1	DP 3/0800	DP 3/2000
DOZ2 TIPTON & YOUNG CONST. COMP. E-506		05/23	ETHAN TIPTON	2	DP 3/0800	DP 3/2000
TPL2 - TIPTON & YOUNG CONST. COMP. E-509		05/23			DP 3/0800	DP 3/2000
DOZ3 KY-KYS-311 650J E-510		05/24	JERRY BROWN	2	DP 3/0800	DP 3/2000
KY DOZER-312 650J E-511		05/24	CHRISTOPHER ADAMS	2	DP 3/0800	DP 3/2000
<b>8. Division/Group Communication Summary</b>						
Function	Channel	RX Frequency N/W	RX Tone/NAC	TX Frequency N/W	TX Tone/NAC	Mode
COMMAND	2	159.1200N	NONE	151.3700N	100.0	A
AIR TO GROUND	4	169.2000N	NONE	169.2000N	NONE	A
TACTICAL	6	159.3900N	NONE	159.3900N	156.7	A
TACTICAL	13	159.4125N	NONE	159.4125N	NONE	A
AIR TO GROUND	14	166.6750N	NONE	166.6750N	NONE	A
AIR TO GROUND	15	169.1500N	NONE	169.1500N	NONE	A
AIR GUARD	16	168.6250N	NONE	168.6250N	110.9	A
<b>9. Prepared By (Resource Unit Leader)</b>			<b>Approved By (Planning Section Chief)</b>		<b>Date</b>	<b>Time</b>
DONNA THOMAS			BRIAN ELDREDGE		05/12/2017	0951

## Division/Group Assignment List (ICS 204 WF)

<b>1. Incident Name:</b>			<b>3.</b>			
WEST MIMS			<b>Branch:</b>		<b>Division/Group:</b>	
<b>2. Operational Period:</b> DAY SHIFT 0830-2030			<b>I</b>		<b>D</b>	
Date/Time From: 05/13/2017 0730 SAT		Date/Time To: 05/13/2017 1930 SAT				
<b>4. Operations Personnel</b>						
<b>PLANNING OPERATIONS CHIEF</b>		STEVE WEAVER JEREMY BRAND (T)		<b>OPERATIONS CHIEF</b>		JIM DURRWACHTER L. SMITH (T); S. BOWMAN; (T)
<b>BRANCH DIRECTOR</b>		DARRELL MILLER		<b>DIVISION/GROUP SUPERVISOR</b>		JOE BURGETTE, GREG TOLL SHELLY CROOK
<b>SAFETY</b>		BRAD LIDDEL, MICHAEL COOK TONY RIVERS (T)		<b>AIR OPS BRANCH DIRECTOR</b>		TIM FAUST
<b>5. Resources Assigned this Period</b>						
Strike Team / Task Force / Resource Designator		LWD	Leader	Number Persons	Drop Off PT./Time	Pick Up PT./Time
TPL3 - WILDLANDS FIRE SERVICE INC - 83627 E-464		05/21	DAVID PLAGEMANN	2	DP 3/0800	DP 3/2000
TPL3 - WILDLANDS FIRE SERVICE INC - 92622 E-466		05/21	CHADWICK SLAYTON	2	DP 3/0800	DP 3/2000
ATTACK ONE FIRE E-463		05/21	JEREMIAH CATES	1	DP 3/0800	DP 3/2000
STEQ O-376		05/22	JAMIE MILLER	1	DP 3/0800	DP 3/2000
EMPF E-375 470-532-8807		05/17	GARY ALLEN FORD	1	DP 3/0800	DP 3/2000
SOF2 O-244 229-561-2259		05/13	MICKEY BUNTON	1	DP 3/0800	DP 3/2000
SOF2 O-541		05/25	LOUIE CAS AUS	1	DP 3/0800	DP 3/2000
SOF2 (T) O-281.59		05/16	CHARLES E PATTERSON	1	DP 3/0800	DP 3/2000
<b>6. Control Operations/Work Assignments:</b>						
Purpose: Keep fire South of Suwannee Canal.						
Task: Coordinate monitoring Billies Island by air with Air Tactical Group Supervisor. Assure structure protection is in place Patrol and mop up within 50' of fire perimeter Respond to any new starts within division Determine and report contained line to Planning Operations Section Chief. DIV E and DIV F are to obtain situational awareness for their respective divisions that are currently unstaffed.						
End State: Confine fire perimeter to reduce threats and minimize damage to private timberlands and resource values at risk.						
<b>8. Division/Group Communication Summary</b>						
Function	Channel	RX Frequency N/W	RX Tone/NAC	TX Frequency N/W	TX Tone/NAC	Mode
COMMAND	2	159.1200N	NONE	151.3700N	100.0	A
AIR TO GROUND	4	169.2000N	NONE	169.2000N	NONE	A
TACTICAL	6	159.3900N	NONE	159.3900N	156.7	A
TACTICAL	13	159.4125N	NONE	159.4125N	NONE	A
AIR TO GROUND	14	166.6750N	NONE	166.6750N	NONE	A
AIR TO GROUND	15	169.1500N	NONE	169.1500N	NONE	A
AIR GUARD	16	168.6250N	NONE	168.6250N	110.9	A
<b>9. Prepared By (Resource Unit Leader)</b>			<b>Approved By (Planning Section Chief)</b>		<b>Date</b>	<b>Time</b>
DONNA THOMAS			BRIAN ELDREDGE		05/12/2017	0951

## Division/Group Assignment List (ICS 204 WF)

<b>1. Incident Name:</b>			<b>3.</b>			
WEST MIMS			<b>I</b>	<b>D</b>		
<b>2. Operational Period:</b> DAY SHIFT 0830-2030						
Date/Time From: 05/13/2017 0730 SAT		Date/Time To: 05/13/2017 1930 SAT				
<b>4. Operations Personnel</b>						
<b>PLANNING OPERATIONS CHIEF</b>		STEVE WEAVER JEREMY BRAND (T)		<b>OPERATIONS CHIEF</b>		JIM DURRWACHTER L. SMITH (T); S. BOWMAN; (T)
<b>BRANCH DIRECTOR</b>		DARRELL MILLER		<b>DIVISION/GROUP SUPERVISOR</b>		JOE BURGETTE, GREG TOLL SHELLY CROOK
<b>SAFETY</b>		BRAD LIDDEL, MICHAEL COOK TONY RIVERS (T)		<b>AIR OPS BRANCH DIRECTOR</b>		TIM FAUST
<b>6. Control Operations/Work Assignments:</b>						
<b>7. Special Instructions:</b>						
<p><b>Ensure LCES is in place before operations begin and stay hydrated. Drive defensively and with lights on at all times. Identify escape routes.</b></p> <p>Medical Emergency Channel: Command                      ETA for Ambulance to Scene:                      Air: 10 mins                      Ground: 25 mins                      Approved Helispot: Drop Point 3                      Lat: N 30 41.257                      Long: W 82 28.833</p> <p><b>Primary</b> - Ambulance is ground contact with air ambulance  <b>Secondary</b> - IWI- IC or approved person will use channel 16 (Air Guard) for ground contact with air ambulance</p>						
<b>8. Division/Group Communication Summary</b>						
Function	Channel	RX Frequency N/W	RX Tone/NAC	TX Frequency N/W	TX Tone/NAC	Mode
COMMAND	2	159.1200N	NONE	151.3700N	100.0	A
AIR TO GROUND	4	169.2000N	NONE	169.2000N	NONE	A
TACTICAL	6	159.3900N	NONE	159.3900N	156.7	A
TACTICAL	13	159.4125N	NONE	159.4125N	NONE	A
AIR TO GROUND	14	166.6750N	NONE	166.6750N	NONE	A
AIR TO GROUND	15	169.1500N	NONE	169.1500N	NONE	A
AIR GUARD	16	168.6250N	NONE	168.6250N	110.9	A
<b>9. Prepared By (Resource Unit Leader)</b>			<b>Approved By (Planning Section Chief)</b>		<b>Date</b>	<b>Time</b>
DONNA THOMAS			BRIAN ELDREDGE		05/12/2017	0951

## Division/Group Assignment List (ICS 204 WF)

<b>1. Incident Name:</b>			<b>3.</b>				
WEST MIMS			<b>I</b>	<b>Branch:</b>		<b>Division/Group:</b>	
<b>2. Operational Period:</b> DAY SHIFT 0830-2030				<b>FL FFS CONTINGENCY</b>			
Date/Time From: 05/13/2017 0730 SAT	Date/Time To: 05/13/2017 1930 SAT						
<b>4. Operations Personnel</b>							
<b>PLANNING OPERATIONS CHIEF</b>		STEVE WEAVER JEREMY BRAND (T)		<b>OPERATIONS CHIEF</b>		JIM DURRWACHTER L. SMITH (T), S. BOWMAN (T)	
<b>BRANCH DIRECTOR</b>		DARRELL MILLER		<b>DIVISION/GROUP SUPERVISOR</b>		GLENN DAVIS JOHN RAULERSON	
<b>SAFETY</b>		BRAD LIDELL; MIKE COOK TONY RIVERS (T)		<b>AIR OPS BRANCH DIRECTOR</b>		TIM FAUST	
<b>5. Resources Assigned this Period</b>							
Strike Team / Task Force / Resource Designator		LWD	Leader	Number Persons	Drop Off PT./Time	Pick Up PT./Time	
STDZ			ANDY LAMBORN	1	JOHN BETHEA/0800	JOHN BETHEA/2000	
TPL2 JOHN BETHEA				1	JOHN BETHEA/0800	JOHN BETHEA/2000	
TPL2				1	JOHN BETHEA/0800	JOHN BETHEA/2000	
DOZ2				1	JOHN BETHEA/0800	JOHN BETHEA/2000	
DOZ2				1	JOHN BETHEA/0800	JOHN BETHEA/2000	
DOZ2				1	JOHN BETHEA/0800	JOHN BETHEA/2000	
DOZ1				1	JOHN BETHEA/0800	JOHN BETHEA/2000	
TPL CALHOUN 61		05/21	WHITE		JOHN BETHEA/0800	JOHN BETHEA/2000	
TPL DOOLY 62		05/21	HOLCUMB		JOHN BETHEA/0800	JOHN BETHEA/2000	
TPL HOUSTON 61		05/21	SIDLE		JOHN BETHEA/0800	JOHN BETHEA/2000	
ENG6				2	JOHN BETHEA/0800	JOHN BETHEA/2000	
STEQ		05/21	MARTY FORE		JOHN BETHEA/0800	JOHN BETHEA/2000	
<b>6. Control Operations/Work Assignments:</b>							
<p><b>Purpose:</b> To provide suppression support for incident.</p> <p><b>Task:</b> Resources are staged at John Bethea State Forest headquarters. Resources are ready upon calling for IA or extended attack.</p> <p><b>End State:</b> Ready support resources to respond to protect structures, timberland and resource values at risk.</p>							
<b>8. Division/Group Communication Summary</b>							
Function	Channel	RX Frequency N/W	RX Tone/NAC	TX Frequency N/W	TX Tone/NAC	Mode	
AIR TO GROUND	4	169.2000N	NONE	169.2000N	NONE	A	
TACTICAL	6	159.3900N	NONE	159.3900N	156.7	A	
AIR TO GROUND	14	166.6750N	NONE	166.6750N	NONE	A	
AIR TO GROUND	15	169.1500N	NONE	169.1500N	NONE	A	
AIR GUARD	16	168.6250N	NONE	168.6250N	110.9	A	
<b>9. Prepared By (Resource Unit Leader)</b>			<b>Approved By (Planning Section Chief)</b>			<b>Date</b>	<b>Time</b>
DONNA THOMAS			BRIAN ELDREDGE			05/12/2017	0951



## Division/Group Assignment List (ICS 204 WF)

<b>1. Incident Name:</b>			<b>3.</b>						
WEST MIMS			<b>I</b>	<b>Branch:</b>		<b>Division/Group:</b>			
<b>2. Operational Period:</b> DAY SHIFT 0830-2030				<b>FL FFS CONTINGENCY</b>					
Date/Time From: 05/13/2017 0730 SAT		Date/Time To: 05/13/2017 1930 SAT							
<b>4. Operations Personnel</b>									
<b>PLANNING OPERATIONS CHIEF</b>		STEVE WEAVER JEREMY BRAND (T)		<b>OPERATIONS CHIEF</b>		JIM DURRWACHTER L. SMITH (T), S. BOWMAN (T)			
<b>BRANCH DIRECTOR</b>		DARRELL MILLER		<b>DIVISION/GROUP SUPERVISOR</b>		GLENN DAVIS JOHN RAULERSON			
<b>SAFETY</b>		BRAD LIDELL; MIKE COOK TONY RIVERS (T)		<b>AIR OPS BRANCH DIRECTOR</b>		TIM FAUST			
<b>7. Special Instructions:</b>									
<p>Ensure LCES are in place before operations begin. Drive defensively and with lights on at all times. Assure common communication per IAP Commo Plan is established before engagement.</p> <p>Contact Rick Dolan, FL FSS Unified IC 352-222-4420 when activating contingency resources.</p> <p>STEQ (Gregory) with 3 Type 4 Tractor Plows.</p>									
<b>8. Division/Group Communication Summary</b>									
Function	Channel	RX Frequency N/W	RX Tone/NAC	TX Frequency N/W	TX Tone/NAC	Mode			
AIR TO GROUND	4	169.2000N	NONE	169.2000N	NONE	A			
TACTICAL	6	159.3900N	NONE	159.3900N	156.7	A			
AIR TO GROUND	14	166.6750N	NONE	166.6750N	NONE	A			
AIR TO GROUND	15	169.1500N	NONE	169.1500N	NONE	A			
AIR GUARD	16	168.6250N	NONE	168.6250N	110.9	A			
<b>9. Prepared By (Resource Unit Leader)</b>			<b>Approved By (Planning Section Chief)</b>			<b>Date</b>		<b>Time</b>	
DONNA THOMAS			BRIAN ELDREDGE			05/12/2017		0951	

## Division/Group Assignment List (ICS 204 WF)

<b>1. Incident Name:</b>			<b>3.</b>				
WEST MIMS			<b>I</b>	<b>Branch:</b>		<b>Division/Group:</b>	
<b>2. Operational Period:</b> DAY SHIFT 0830-2030				<b>WEST ROAD MAINTENANCE</b>			
Date/Time From: 05/13/2017 0730 SAT		Date/Time To: 05/13/2017 1930 SAT					
<b>4. Operations Personnel</b>							
<b>OPERATIONS CHIEF</b>		JIM DURRWACHTER L. SMITH (T), S. BOWMAN (T)		<b>BRANCH DIRECTOR</b>			
<b>THSP ROADS</b>				<b>AIR ATTACK SUPERVISOR</b>			
<b>5. Resources Assigned this Period</b>							
Strike Team / Task Force / Resource Designator		LWD	Leader	Number Persons	Drop Off PT./Time	Pick Up PT./Time	
GRADER - R.O.T. RANCH CONSTRUCTION E-234		05/20	ROBBY WORRELL	1	DP 10/0800	DP 10/2000	
TFLD - O-308		05/16	CHARLES DAVIS	1	DP 10/0800	DP 10/2000	
GRADER - WILDLANDS FIRE SERVICE INC - 6198TE E-136		05/22	CARSON SWEENEY	1	DP 10/0800	DP 10/2000	
ROAD GRADER - T1 - TIPTON & YOUNG CONSTRUCTION COMPANY E-419		05/20	MAC EVANS	1	DP 10/0800	DP 10/2000	
HEQB O-290		05/16	WES VANDENABEELE	1	DP 10/0800	DP 10/2000	
HEQB O-355		05/21	RON ROCKIS	1	DP 10/0800	DP 10/2000	
<b>6. Control Operations/Work Assignments:</b>							
<b>Purpose:</b> To keep roads accessible for access to fire perimeter.							
<b>Task:</b> Assess single lane bridges and culverts for safety and maintenance needs. Provide adequate signage for traffic safety. All DIVS to assess Rd maintenance needs for OSC prioritization. OSC to give list of priority road needs to road maintenance leader / boss/.							
<b>End State:</b> Access Roads are in a safe, travel worthy condition for suppression activities, and coordinated with private landowners as appropriate.							
<b>7. Special Instructions:</b>							
<b>8. Division/Group Communication Summary</b>							
Function	Channel	RX Frequency N/W	RX Tone/NAC	TX Frequency N/W	TX Tone/NAC	Mode	
AIR TO GROUND	4	169.2000N	NONE	169.2000N	NONE	A	
COMMAND	5	159.4650N	NONE	151.1450N	123.0	A	
TACTICAL	6	159.3900N	NONE	159.3900N	156.7	A	
TACTICAL	7	154.3025N	NONE	154.3025N	156.7	A	
<b>9. Prepared By (Resource Unit Leader)</b>			<b>Approved By (Planning Section Chief)</b>		<b>Date</b>	<b>Time</b>	
DONNA THOMAS			BRIAN ELDREDGE		05/12/2017	0951	

## Division/Group Assignment List (ICS 204 WF)

<b>1. Incident Name:</b>			<b>3.</b>			
WEST MIMS			<b>III</b>		<b>INITIAL ATTACK</b>	
<b>2. Operational Period:</b> DAY SHIFT 0830-2030						
Date/Time From: 05/13/2017 0730 SAT		Date/Time To: 05/13/2017 1930 SAT				
<b>4. Operations Personnel</b>						
<b>PLANNING OPERATIONS CHIEF</b>		STEVE WEAVER, DAVE WALKER JEREMY BRAND (T)		<b>OPERATIONS CHIEF</b>		JIM DURRWACHTER L. SMITH(T), S. BOWMAN (T)
<b>BRANCH DIRECTOR</b>		RON SMITH		<b>DIVISION/GROUP SUPERVISOR</b>		DONNIE HARRIS
<b>SAFETY</b>		TOMMY HAWKINS		<b>AIR OPS BRANCH DIRECTOR</b>		TIM FAUST
<b>5. Resources Assigned this Period</b>						
Strike Team / Task Force / Resource Designator		LWD	Leader	Number Persons	Drop Off PT./Time	Pick Up PT./Time
ICT4			CORY BRYANT	1	/0800	/2000
TFLD O-205		05/15	ADAM MCCULLOUGH	1	/0800	/2000
DOZ2 OKE-54 E-34 IA			F. PRIVETT	1	/0800	/2000
OKE 56 - TPL E-35 IA			WES ALLIE	1	/0800	/2000
ENGINE - T6 - OK-4261 E-36 IA		05/22	B. HORNSBY	2	/0800	/2000
SC-CSR - TPL 223 E-240 CONT			UNSTAFFED	1	/0800	/2000
NC PXI - TPL E-131 CONT		05/14	J. SWAIN	1	/0800	/2000
ENGINE - T6 - SC-CRR-E262 E-237 IA		05/21	ROBERT ASKINS	2	/0800	/2000
DOZ2 - GA-SAR-922 IA E-122		05/21	C. JOHNSON	1	/0800	/2000
SOF2(T) O-281.59		05/15	CHARLES E PATTERSON	1	/0800	/2000
<b>6. Control Operations/Work Assignments:</b>						
<p><b>Purpose:</b> Establish communication with OKR/GA and FL State.                  Ensure timely response on any IA within OKR jurisdictional boundaries and vicinity.                  Assist as approved by Agency Administrators and Unified Incident Commanders.</p> <p><b>Task:</b> Coordinate with OKR duty officer for notification of reported new ignitions.                  Coordinate initial attack action with assigned aviation and/or ground assets.                  Determine IA resource repositioning across OKR.                  Establish common communication per IAP before engagement.</p> <p><b>End State:</b> Protect human life                  Minimize damage to public and private property</p>						
<b>8. Division/Group Communication Summary</b>						
Function	Channel	RX Frequency N/W	RX Tone/NAC	TX Frequency N/W	TX Tone/NAC	Mode
COMMAND	3	159.1200N	NONE	151.3700N	82.5	A
AIR TO GROUND	4	169.2000N	NONE	169.2000N	NONE	A
TACTICAL	8	163.7125N	NONE	163.7125N	NONE	A
AIR TO GROUND	14	166.6750N	NONE	166.6750N	NONE	A
AIR TO GROUND	15	169.1500N	NONE	169.1500N	NONE	A
AIR GUARD	16	168.6250N	NONE	168.6250N	110.9	A
<b>9. Prepared By (Resource Unit Leader)</b>			<b>Approved By (Planning Section Chief)</b>		<b>Date</b>	<b>Time</b>
DONNA THOMAS			BRIAN ELDREDGE		05/12/2017	0951

## Division/Group Assignment List (ICS 204 WF)

<b>1. Incident Name:</b>			<b>3.</b>			
WEST MIMS			<b>III</b>	<b>INITIAL ATTACK</b>		
<b>2. Operational Period:</b> DAY SHIFT 0830-2030						
Date/Time From: 05/13/2017 0730 SAT		Date/Time To: 05/13/2017 1930 SAT				
<b>4. Operations Personnel</b>						
<b>PLANNING OPERATIONS CHIEF</b>		STEVE WEAVER, DAVE WALKER JEREMY BRAND (T)		<b>OPERATIONS CHIEF</b>		JIM DURRWACHTER L. SMITH(T), S. BOWMAN (T)
<b>BRANCH DIRECTOR</b>		RON SMITH		<b>DIVISION/GROUP SUPERVISOR</b>		DONNIE HARRIS
<b>SAFETY</b>		TOMMY HAWKINS		<b>AIR OPS BRANCH DIRECTOR</b>		TIM FAUST
<b>6. Control Operations/Work Assignments:</b>						
Minimize environmental damage to protect threatened species.						
<b>7. Special Instructions:</b>						
<p>Contact Resource Advisors for any cultural or archeological needs, as well as, RCW concerns.                  Ensure LCES is in place before operations begin &amp; stay hydrated.                  Drive defensively and with lights on at all times.                  Communications: Use the tactical channel for the division you are in.                  Staging on east side at Refuge office.</p> <p>Contact Buck Kline, GFC Unified IC 912-678-2694 when activating GFC contingency resources that are unassigned.</p>						
<b>8. Division/Group Communication Summary</b>						
Function	Channel	RX Frequency N/W	RX Tone/NAC	TX Frequency N/W	TX Tone/NAC	Mode
COMMAND	3	159.1200N	NONE	151.3700N	82.5	A
AIR TO GROUND	4	169.2000N	NONE	169.2000N	NONE	A
TACTICAL	8	163.7125N	NONE	163.7125N	NONE	A
AIR TO GROUND	14	166.6750N	NONE	166.6750N	NONE	A
AIR TO GROUND	15	169.1500N	NONE	169.1500N	NONE	A
AIR GUARD	16	168.6250N	NONE	168.6250N	110.9	A
<b>9. Prepared By (Resource Unit Leader)</b>			<b>Approved By (Planning Section Chief)</b>		<b>Date</b>	<b>Time</b>
DONNA THOMAS			BRIAN ELDREDGE		05/12/2017	0951

## Division/Group Assignment List (ICS 204 WF)

<b>1. Incident Name:</b>				<b>3.</b>			
WEST MIMS				<b>III</b>		<b>M/N</b>	
<b>2. Operational Period:</b> DAY SHIFT 0830-2030							
Date/Time From: 05/13/2017 0730 SAT		Date/Time To: 05/13/2017 1930 SAT					
<b>4. Operations Personnel</b>							
<b>PLANNING OPERATIONS CHIEF</b>		STEVE WEAVER, DAVE WALKER JEREMY BRAND (T)		<b>OPERATIONS CHIEF</b>		JIM DURRWACHTER L. SMITH (T), S. BOWMAN (T)	
<b>BRANCH DIRECTOR</b>		RON SMITH		<b>DIVISION/GROUP SUPERVISOR</b>		BRIAN BROWNING, JASON LAGO (T) SAM MCFARLAND, SUNBEAR VIERRA	
<b>SAFETY</b>		LARRY CONNELL		<b>AIR OPS BRANCH DIRECTOR</b>		TIM FAUST	
<b>5. Resources Assigned this Period</b>							
Strike Team / Task Force / Resource Designator		LWD	Leader	Number Persons	Drop Off PT./Time	Pick Up PT./Time	
WT2 WET 'N RED, LLC - 58592 E-365		05/16	ALLEN WEST	2	/0800	/2000	
ENG6 - ATTACK ONE FIRE MGMT SERV E-257		05/28	JOHN HOELLERICH	2	/0800	/2000	
ENG6 - SCHOLL FIRE & FUELS MGMT. E-263		05/19	BEN HAYS	3	/0800	/2000	
ENG6 - AR-OZF - SYL - E-671 E-283		05/24	TONY REBO	3	/0800	/2000	
TFLD O-385		05/23	MARVIN ROYBAL	1	/0800	/2000	
TPL4 - MSR2 E-594		05/24	JAMES BATES	1	/0800	/2000	
STEQ O-512		05/25	JASON HARRIS	1	/0800	/2000	
TPL2 E-666		05/25	STEVEN JOHNSON	2	/0800	/2000	
TPL2 E-665		05/25	ERIC SMITH	2	/0800	/2000	
TPL2 E-667		05/25	DAVIS STEEDLEY	2	/0800	/2000	
SOF2 O-195 520-591-2434		05/29	JOHN MCGEE	1	/0800	/2000	
EMPF O-174 616-403-1873			LINDA KRAMER	1	/0800	/2000	
HEQB O-510		05/25	KEVIN J DITMANSON	1	/0800	/2000	
TX FOREST SERVICE TRACTOR PLOW -T4 E-471		05/25	TIM GILL	2	/0800	/2000	
TRACTOR PLOW - T4 - UNIT #8191 - HUNTSVILLE E-570		05/25	CROCKETT PEGODA	2	/0800	/2000	
<b>6. Control Operations/Work Assignments:</b>							
<b>8. Division/Group Communication Summary</b>							
Function	Channel	RX Frequency N/W	RX Tone/NAC	TX Frequency N/W	TX Tone/NAC	Mode	
COMMAND	3	159.1200N	NONE	151.3700N	82.5	A	
AIR TO GROUND	4	169.2000N	NONE	169.2000N	NONE	A	
TACTICAL	10	168.3500N	NONE	168.3500N	NONE	A	
AIR TO GROUND	14	166.6750N	NONE	166.6750N	NONE	A	
AIR TO GROUND	15	169.1500N	NONE	169.1500N	NONE	A	
AIR GUARD	16	168.6250N	NONE	168.6250N	110.9	A	
<b>9. Prepared By (Resource Unit Leader)</b>			<b>Approved By (Planning Section Chief)</b>			<b>Date</b>	<b>Time</b>
DONNA THOMAS			BRIAN ELDREDGE			05/12/2017	0951

## Division/Group Assignment List (ICS 204 WF)

<b>1. Incident Name:</b>			<b>3.</b>			
WEST MIMS			<b>III</b>	<b>Division/Group:  M/N</b>		
<b>2. Operational Period:</b> DAY SHIFT 0830-2030						
Date/Time From:	Date/Time To:					
05/13/2017 0730 SAT	05/13/2017 1930 SAT					
<b>4. Operations Personnel</b>						
<b>PLANNING OPERATIONS CHIEF</b>	STEVE WEAVER, DAVE WALKER JEREMY BRAND (T)		<b>OPERATIONS CHIEF</b>	JIM DURRWACHTER L. SMITH (T), S. BOWMAN (T)		
<b>BRANCH DIRECTOR</b>	RON SMITH		<b>DIVISION/GROUP SUPERVISOR</b>	BRIAN BROWNING, JASON LAGO (T) SAM MCFARLAND, SUNBEAR VIERRA		
<b>SAFETY</b>	LARRY CONNELL		<b>AIR OPS BRANCH DIRECTOR</b>	TIM FAUST		
<b>6. Control Operations/Work Assignments:</b>						
<p><b>Purpose: Keep fire West of Swamp edge break and South of Suwannee Canal in DIV M and South of Crawford Rd in DIV N.</b></p> <p><b>Task: Patrol and mop up within 50 ft of fire perimeter. Respond to any new starts within Div. Prep for strategic firing of control lines. Determine and report contained line to Planning OSC1. DIV L and DIV K are to obtain situational awareness for their respective divisions that are currently unstaffed.</b></p> <p><b>End State: Confine fire perimeter to reduce threats and minimize damage to private timberlands and resources values at risk.</b></p>						
<b>7. Special Instructions:</b>						
<p><b>Ensure LCES is in place before operations begin and stay hydrated. Drive defensively and with lights on at all times. Identify escape routes.</b></p> <p>Medical Emergency Channel: Command ETA for Ambulance to Scene: Air: 7 mins Ground: 15 mins Approved Helispot: POGO Helibase Lat: N 30 44.26 Long: W 82 07.69 <b>Primary</b> - Ambulance is ground contact with air ambulance <b>Secondary</b> - IWI- IC or approved person will use channel 16 (Air Guard) for ground contact with air ambulance</p>						
<b>8. Division/Group Communication Summary</b>						
Function	Channel	RX Frequency N/W	RX Tone/NAC	TX Frequency N/W	TX Tone/NAC	Mode
COMMAND	3	159.1200N	NONE	151.3700N	82.5	A
AIR TO GROUND	4	169.2000N	NONE	169.2000N	NONE	A
TACTICAL	10	168.3500N	NONE	168.3500N	NONE	A
AIR TO GROUND	14	166.6750N	NONE	166.6750N	NONE	A
AIR TO GROUND	15	169.1500N	NONE	169.1500N	NONE	A
AIR GUARD	16	168.6250N	NONE	168.6250N	110.9	A
<b>9. Prepared By (Resource Unit Leader)</b>			<b>Approved By (Planning Section Chief)</b>		<b>Date</b>	<b>Time</b>
DONNA THOMAS			BRIAN ELDREDGE		05/12/2017	0951

## Division/Group Assignment List (ICS 204 WF)

<b>1. Incident Name:</b>				<b>3.</b>					
WEST MIMS				<b>III</b>		<b>O</b>			
<b>2. Operational Period:</b> DAY SHIFT 0830-2030									
Date/Time From: 05/13/2017 0730 SAT		Date/Time To: 05/13/2017 1930 SAT							
<b>4. Operations Personnel</b>									
<b>PLANNING OPERATIONS CHIEF</b>		STEVE WEAVER, DAVE WALKER JEREMY BRAND (T)		<b>OPERATIONS CHIEF</b>		JIM DURRWACHTER L. SMITH (T), S. BOWMAN (T)			
<b>BRANCH DIRECTOR</b>		RON SMITH		<b>DIVISION/GROUP SUPERVISOR</b>		ROBERT G THORP BRANDON HUGHES (T)			
<b>SAFETY</b>		LARRY CONNELL		<b>AIR OPS BRANCH DIRECTOR</b>		TIM FAUST			
<b>5. Resources Assigned this Period</b>									
Strike Team / Task Force / Resource Designator		LWD	Leader	Number Persons	Drop Off PT./Time	Pick Up PT./Time			
TFLD O-260		05/18	CODY HOLLOWAY	1	DP 42/0800	DP 42/2000			
ENG6 - UNIT #9060 - AMARILLO E-119		05/18	RANDALL FUCHS	3	DP 42/0800	DP 42/2000			
ENG3 - UNIT #9830 - LUBBOCK TF8 E-121		05/17	JEFF WEBB	5	DP 42/0800	DP 42/2000			
TPL5 - UNIT #9892 - WOLFFORTH TF8 E-123		05/18	NATHAN SMITH	2	DP 42/0800	DP 42/2000			
TPL5 - UNIT #9693 - SMITHVILLE E-124		05/18	MIKE ADAMS	2	DP 42/0800	DP 42/2000			
ENG6 - FWS - 462 E-261		05/21	REBECCA GOOSMAN	3	DP 42/0800	DP 42/2000			
TFLD O-274 325-276-1713		05/17	SHANE CRIMM	1	DP 42/0800	DP 42/2000			
ENG6 - UNIT #9360 - MCGREGOR TF3 E-120		05/17	JASON MYERS	3	DP 42/0800	DP 42/2000			
ENG3 - UNIT #9530 - FT STOCKTON TF5 E-122		05/17	JARED ( WICHITA FALLS FD) BURCHETT	5	DP 42/0800	DP 42/2000			
ENG6 - 151 TEXAS FIRE RESOURCES E-260		05/19	LARRY WEAVER	3	DP 42/0800	DP 42/2000			
TPL4 - UNIT #8394 - JASPER E-125		05/17	JOSH MIZRANY	2	DP 42/0800	DP 42/2000			
TPL5 - UNIT #8591 - WOODVILLE E-126		05/17	CHARLES CORLEY	2	DP 42/0800	DP 42/2000			
<b>8. Division/Group Communication Summary</b>									
Function	Channel	RX Frequency N/W	RX Tone/NAC	TX Frequency N/W	TX Tone/NAC	Mode			
AIR TO GROUND	4	169.2000N	NONE	169.2000N	NONE	A			
COMMAND	5	159.4650N	NONE	151.1450N	123.0	A			
TACTICAL	8	163.7125N	NONE	163.7125N	NONE	A			
AIR TO GROUND	14	166.6750N	NONE	166.6750N	NONE	A			
AIR TO GROUND	15	169.1500N	NONE	169.1500N	NONE	A			
AIR GUARD	16	168.6250N	NONE	168.6250N	110.9	A			
<b>9. Prepared By (Resource Unit Leader)</b>			<b>Approved By (Planning Section Chief)</b>			<b>Date</b>		<b>Time</b>	
DONNA THOMAS			BRIAN ELDREDGE			05/12/2017		0951	

## Division/Group Assignment List (ICS 204 WF)

<b>1. Incident Name:</b>			<b>3.</b>			
WEST MIMS			<b>III</b>		<b>O</b>	
<b>2. Operational Period:</b> DAY SHIFT 0830-2030						
Date/Time From: 05/13/2017 0730 SAT		Date/Time To: 05/13/2017 1930 SAT				
<b>4. Operations Personnel</b>						
<b>PLANNING OPERATIONS CHIEF</b>		STEVE WEAVER, DAVE WALKER JEREMY BRAND (T)		<b>OPERATIONS CHIEF</b>		
				JIM DURRWACHTER L. SMITH (T), S. BOWMAN (T)		
<b>BRANCH DIRECTOR</b>		RON SMITH		<b>DIVISION/GROUP SUPERVISOR</b>		
				ROBERT G THORP BRANDON HUGHES (T)		
<b>SAFETY</b>		LARRY CONNELL		<b>AIR OPS BRANCH DIRECTOR</b>		
				TIM FAUST		
<b>5. Resources Assigned this Period</b>						
Strike Team / Task Force / Resource Designator		LWD	Leader	Number Persons	Drop Off PT./Time	Pick Up PT./Time
STEQ O-371		05/19	MICHAEL HENDERSON	1	DP 42/0800	DP 42/2000
TPL3 - GFC1067 E-370		05/20	KEVIN ANDERSON	1	DP 42/0800	DP 42/2000
TPL2 - GFC3307 E-371		05/20	BENJI ANDERSON	1	DP 42/0800	DP 42/2000
TPL2 - GFC3295 E-372		05/15	SAMUEL LITTLE	1	DP 42/0800	DP 42/2000
WT2 - BONNELL SAND & GRAVEL I E-366		05/23	JOE BONNELL	1	DP 42/0800	DP 42/2000
MODULE - SUPPRESSION - BIA SUPPRESSION MODULE #2 O-522		05/26	SCOTTY KOPEPAWSSAH	12	DP 42/0800	DP 42/2000
CREW - T1 - PIKE IHC C-9		05/21	JOHN ALLBRIGHT	20	DP 42/0800	DP 42/2000
EMPF W/UTV O-346 229--561-4224		05/20	DEAN CARPENTER	1	DP 42/0800	DP 42/2000
SOF2 O-195		05/27	JOHN MCGEE	1	DP 42/0800	DP 42/2000
<b>6. Control Operations/Work Assignments:</b>						
<p><b>Task:</b> Anchor suppression work at fire perimeter in O. Prep lines and coordinate strategic firing with Unified IC's, as appropriate. Coordinate with Structure Protection group supervisor on triage of structures for point protection. Continue dozer line construction as appropriate to establish or strengthen containment lines.</p> <p><b>Purpose:</b> To keep fire confined and contained.</p>						
<b>8. Division/Group Communication Summary</b>						
Function	Channel	RX Frequency N/W	RX Tone/NAC	TX Frequency N/W	TX Tone/NAC	Mode
AIR TO GROUND	4	169.2000N	NONE	169.2000N	NONE	A
COMMAND	5	159.4650N	NONE	151.1450N	123.0	A
TACTICAL	8	163.7125N	NONE	163.7125N	NONE	A
AIR TO GROUND	14	166.6750N	NONE	166.6750N	NONE	A
AIR TO GROUND	15	169.1500N	NONE	169.1500N	NONE	A
AIR GUARD	16	168.6250N	NONE	168.6250N	110.9	A
<b>9. Prepared By (Resource Unit Leader)</b>		<b>Approved By (Planning Section Chief)</b>		<b>Date</b>		<b>Time</b>
DONNA THOMAS		BRIAN ELDREDGE		05/12/2017		0951



## Division/Group Assignment List (ICS 204 WF)

<b>1. Incident Name:</b>			<b>3.</b>			
WEST MIMS			<b>III</b>	<b>O</b>		
<b>2. Operational Period:</b> DAY SHIFT 0830-2030						
Date/Time From:	Date/Time To:					
05/13/2017 0730 SAT	05/13/2017 1930 SAT					
<b>4. Operations Personnel</b>						
<b>PLANNING OPERATIONS CHIEF</b>	STEVE WEAVER, DAVE WALKER JEREMY BRAND (T)		<b>OPERATIONS CHIEF</b>	JIM DURRWACHTER L. SMITH (T), S. BOWMAN (T)		
<b>BRANCH DIRECTOR</b>	RON SMITH		<b>DIVISION/GROUP SUPERVISOR</b>	ROBERT G THORP BRANDON HUGHES (T)		
<b>SAFETY</b>	LARRY CONNELL		<b>AIR OPS BRANCH DIRECTOR</b>	TIM FAUST		
<b>6. Control Operations/Work Assignments:</b>						
<p>Keep fire West of St Mary's River. To protect outlying structures.</p> <p>End State: Contain fire perimeter within boundaries of DIV O. Protect City of St. George residents and private property. Minimize damage to both public and private infrastructure. Protect resource values at risk.</p>						
<b>7. Special Instructions:</b>						
<p>Ensure LCES are in place before operations begin and stay hydrated. Drive defensively and with lights on at all times. Identify escape routes.</p> <p>Medical Emergency Channel: Command ETA for Ambulance to Scene: Air: 10 mins Ground: 15 mins Approved Helispot: POGO Helibase Lat: N 30 44.26 Long: W 82 07.69</p> <p><b>Primary</b> - Ambulance is ground contact with air ambulance <b>Secondary</b> - IWI- IC or approved person will use channel 16 (Air Guard) for ground contact with air ambulance</p>						
<b>8. Division/Group Communication Summary</b>						
Function	Channel	RX Frequency N/W	RX Tone/NAC	TX Frequency N/W	TX Tone/NAC	Mode
AIR TO GROUND	4	169.2000N	NONE	169.2000N	NONE	A
COMMAND	5	159.4650N	NONE	151.1450N	123.0	A
TACTICAL	8	163.7125N	NONE	163.7125N	NONE	A
AIR TO GROUND	14	166.6750N	NONE	166.6750N	NONE	A
AIR TO GROUND	15	169.1500N	NONE	169.1500N	NONE	A
AIR GUARD	16	168.6250N	NONE	168.6250N	110.9	A
<b>9. Prepared By (Resource Unit Leader)</b>		<b>Approved By (Planning Section Chief)</b>		<b>Date</b>	<b>Time</b>	
DONNA THOMAS		BRIAN ELDREDGE		05/12/2017	0951	

## Division/Group Assignment List (ICS 204 WF)

<b>1. Incident Name:</b>			<b>3.</b>			
WEST MIMS			<b>Branch:</b>		<b>Division/Group:</b>	
<b>2. Operational Period:</b> DAY SHIFT 0830-2030			<b>IV</b>		<b>A</b>	
Date/Time From: 05/13/2017 0730 SAT		Date/Time To: 05/13/2017 1930 SAT				
<b>4. Operations Personnel</b>						
<b>PLANNING OPERATIONS CHIEF</b>		STEVE WEAVER, DAVE WALKER JEREMY BRAND (T)		<b>OPERATIONS CHIEF</b>		JIM DURRWACHTER L. SMITH (T), S. BOWMAN (T)
<b>BRANCH DIRECTOR</b>		RON SMITH		<b>DIVISION/GROUP SUPERVISOR</b>		JAMES ROURKS
<b>AIR OPS BRANCH DIRECTOR</b>		TIM FAUST		<b>SAFETY</b>		LARRY CONNELL
<b>5. Resources Assigned this Period</b>						
Strike Team / Task Force / Resource Designator		LWD	Leader	Number Persons	Drop Off PT./Time	Pick Up PT./Time
STEN O-358		05/21	HANS RUDOLF	1	DP 2/0800	DP 2/2000
TFLD O-197			ERIK M JOHNSON	1	DP 2/0800	DP 2/2000
MODULE O-311		05/18	RONALD ESQUIBEL	10	DP 2/0800	DP 2/2000
ENG3 - WEST METRO - BRUSH 39 E-277		05/22	BRADLEY NELSON	4	DP 2/0800	DP 2/2000
ENG3 - DEER MOUNTAIN FPD - ENGINE 12 E-280		06/06	JOSEPH CRAIG WATTS	3	DP 2/0800	DP 2/2000
ENG6 - KNF - FSD3 - 631 E-285		05/17	EDWIN FARRAND	5	DP 2/0800	DP 2/2000
ENG6 - TGF FORESTRY AND FIRE, INC. - C94783 - E E-287		05/23	JASON SARTIN	3	DP 2/0800	DP 2/2000
WTS2 - SUPPORT TIPTON & YOUNG CONSTRUCT E-347		05/16	JIM VICK	1	DP 2/0800	DP 2/2000
ENG6 - WILDLANDS FIRE SERVICE INC - C93328 - 5 E-539		05/24	DAVID HOGREFE	3	DP 2/0800	DP 2/2000
<b>8. Division/Group Communication Summary</b>						
Function	Channel	RX Frequency N/W	RX Tone/NAC	TX Frequency N/W	TX Tone/NAC	Mode
AIR TO GROUND	4	169.2000N	NONE	169.2000N	NONE	A
COMMAND	5	159.4650N	NONE	151.1450N	123.0	A
TACTICAL	6	159.3900N	NONE	159.3900N	156.7	A
TACTICAL	7	154.3025N	NONE	154.3025N	156.7	A
AIR TO GROUND	14	166.6750N	NONE	166.6750N	NONE	A
AIR TO GROUND	15	169.1500N	NONE	169.1500N	NONE	A
AIR GUARD	16	168.6250N	NONE	168.6250N	110.9	A
<b>9. Prepared By (Resource Unit Leader)</b>			<b>Approved By (Planning Section Chief)</b>		<b>Date</b>	<b>Time</b>
DONNA THOMAS			BRIAN ELDREDGE		05/12/2017	0951

## Division/Group Assignment List (ICS 204 WF)

<b>1. Incident Name:</b>			<b>3.</b>			
WEST MIMS			<b>IV</b>		<b>A</b>	
<b>2. Operational Period:</b> DAY SHIFT 0830-2030						
Date/Time From: 05/13/2017 0730 SAT		Date/Time To: 05/13/2017 1930 SAT				
<b>4. Operations Personnel</b>						
<b>PLANNING OPERATIONS CHIEF</b>		STEVE WEAVER, DAVE WALKER JEREMY BRAND (T)		<b>OPERATIONS CHIEF</b>		JIM DURRWACHTER L. SMITH (T), S. BOWMAN (T)
<b>BRANCH DIRECTOR</b>		RON SMITH		<b>DIVISION/GROUP SUPERVISOR</b>		JAMES ROURKS
<b>AIR OPS BRANCH DIRECTOR</b>		TIM FAUST		<b>SAFETY</b>		LARRY CONNELL
<b>5. Resources Assigned this Period</b>						
Strike Team / Task Force / Resource Designator		LWD	Leader	Number Persons	Drop Off PT./Time	Pick Up PT./Time
TFLD - O-256		05/14	ANDREW PASCARELLA, JASON GILLIS (T)	1	DP 2/0800	DP 2/2000
ENG6 MURRAY 86 E-61		05/26	KENNETH HARKINS	2	DP 2/0800	DP 2/2000
ENG6 - GFC4201278 E-706					DP 2/0800	DP 2/2000
ENG6 - 6171 E-77		05/22	MARK CLAY	3	DP 2/0800	DP 2/2000
ENG6 FRANKLIN 86 E-59		05/26	DOUGLAS SLAY	2	DP 2/0800	DP 2/2000
ENG6 CHATTOOGA 86 E-60		05/26	BRANDON CORNETT	2	DP 2/0800	DP 2/2000
ENG6 - NC-NCS - PK-7795 E-533		05/24	MICHAEL BLAKE	2	DP 2/0800	DP 2/2000
ENG6 - WILLIAMS WILDLAND FIRE SERVICES, LLC - C E-143		05/17	MICHAEL MCNAUGHTON	3	DP 2/0800	DP 2/2000
WT - STRICKLANDS TRACTOR & SUPPLY E-272		05/13	LUCIUS CORBITT	1	DP 2/0800	DP 2/2000
STEQ O-251		05/13	R.T. LUMPKIN	1	DP 2/0800	DP 2/2000
TPL4 MARION 70 -GFC3284 E-82		05/13	CHRIS DUNN	1	DP 2/0800	DP 2/2000
TPL4 CRAWFORD 71 - GFC1455 E-84		05/13	BRANDON JONES	1	DP 2/0800	DP 2/2000
TPL4 1326 E-343		05/13	DOUG REDDING	1	DP 2/0800	DP 2/2000
<b>8. Division/Group Communication Summary</b>						
Function	Channel	RX Frequency N/W	RX Tone/NAC	TX Frequency N/W	TX Tone/NAC	Mode
AIR TO GROUND	4	169.2000N	NONE	169.2000N	NONE	A
COMMAND	5	159.4650N	NONE	151.1450N	123.0	A
TACTICAL	6	159.3900N	NONE	159.3900N	156.7	A
TACTICAL	7	154.3025N	NONE	154.3025N	156.7	A
AIR TO GROUND	14	166.6750N	NONE	166.6750N	NONE	A
AIR TO GROUND	15	169.1500N	NONE	169.1500N	NONE	A
AIR GUARD	16	168.6250N	NONE	168.6250N	110.9	A
<b>9. Prepared By (Resource Unit Leader)</b>			<b>Approved By (Planning Section Chief)</b>		<b>Date</b>	<b>Time</b>
DONNA THOMAS			BRIAN ELDREDGE		05/12/2017	0951

## Division/Group Assignment List (ICS 204 WF)

<b>1. Incident Name:</b>			<b>3.</b>			
WEST MIMS			<b>IV</b>		<b>A</b>	
<b>2. Operational Period:</b> DAY SHIFT 0830-2030						
Date/Time From: 05/13/2017 0730 SAT		Date/Time To: 05/13/2017 1930 SAT				
<b>4. Operations Personnel</b>						
<b>PLANNING OPERATIONS CHIEF</b>		STEVE WEAVER, DAVE WALKER JEREMY BRAND (T)		<b>OPERATIONS CHIEF</b>		JIM DURRWACHTER L. SMITH (T), S. BOWMAN (T)
<b>BRANCH DIRECTOR</b>		RON SMITH		<b>DIVISION/GROUP SUPERVISOR</b>		JAMES ROURKS
<b>AIR OPS BRANCH DIRECTOR</b>		TIM FAUST		<b>SAFETY</b>		LARRY CONNELL
<b>5. Resources Assigned this Period</b>						
Strike Team / Task Force / Resource Designator		LWD	Leader	Number Persons	Drop Off PT./Time	Pick Up PT./Time
STEQ O-258		05/16	TODD M MILAM	1	DP 2/0800	DP 2/2000
TPL4 - GFC3204 E-404		05/16	DAVID COTTLES	1	DP 2/0800	DP 2/2000
TPL4 - GFC3226 E-405		05/16	BRANDON CHAFIN	1	DP 2/0800	DP 2/2000
TPL4 - GFC1467 E-406		05/26	BRYANT JENSON	1	DP 2/0800	DP 2/2000
ENG6-E631 E-56		05/24	DANIEL CASTO	3	DP 2/0800	DP 2/2000
TENDER-WATER - T1 - VIN# E-588					DP 2/0800	DP 2/2000
EMPF E-374 6      602-376-9812		05/16	PAUL PUGH	1	DP 2/0800	DP 2/2000
SOF2 O-516		05/25	RON GARCIA	1	DP 2/0800	DP 2/2000
<b>6. Control Operations/Work Assignments:</b>						
Purpose: Keep fire North of FL 2 between DP1 and DP46.						
Task: Patrol and mop up within 50 ft of fire perimeter. Respond to any new starts within Div. Determine and report contained line to Planning OSC1.						
End State: Confine fire perimeter to reduce threats and minimize damage to private timberlands and resources values at risk.						
<b>8. Division/Group Communication Summary</b>						
Function	Channel	RX Frequency N/W	RX Tone/NAC	TX Frequency N/W	TX Tone/NAC	Mode
AIR TO GROUND	4	169.2000N	NONE	169.2000N	NONE	A
COMMAND	5	159.4650N	NONE	151.1450N	123.0	A
TACTICAL	6	159.3900N	NONE	159.3900N	156.7	A
TACTICAL	7	154.3025N	NONE	154.3025N	156.7	A
AIR TO GROUND	14	166.6750N	NONE	166.6750N	NONE	A
AIR TO GROUND	15	169.1500N	NONE	169.1500N	NONE	A
AIR GUARD	16	168.6250N	NONE	168.6250N	110.9	A
<b>9. Prepared By (Resource Unit Leader)</b>			<b>Approved By (Planning Section Chief)</b>		<b>Date</b>	<b>Time</b>
DONNA THOMAS			BRIAN ELDREDGE		05/12/2017	0951

## Division/Group Assignment List (ICS 204 WF)

<b>1. Incident Name:</b>			<b>3.</b>			
WEST MIMS			<b>IV</b>	<b>A</b>		
<b>2. Operational Period:</b> DAY SHIFT 0830-2030						
Date/Time From:	Date/Time To:					
05/13/2017 0730 SAT	05/13/2017 1930 SAT					
<b>4. Operations Personnel</b>						
<b>PLANNING OPERATIONS CHIEF</b>	STEVE WEAVER, DAVE WALKER JEREMY BRAND (T)		<b>OPERATIONS CHIEF</b>	JIM DURRWACHTER L. SMITH (T), S. BOWMAN (T)		
<b>BRANCH DIRECTOR</b>	RON SMITH		<b>DIVISION/GROUP SUPERVISOR</b>	JAMES ROURKS		
<b>AIR OPS BRANCH DIRECTOR</b>	TIM FAUST		<b>SAFETY</b>	LARRY CONNELL		
<b>6. Control Operations/Work Assignments:</b>						
<b>7. Special Instructions:</b>						
<p>Ensure LCES is in place before operations begin and stay hydrated. Drive defensively and with lights on at all times. Identify escape routes. Bridge near DP 9 restricted to pickups - No engines. Bridge on swamp perimeter road just east of first Branch has steep drop offs - 1 lane travel - watch for barricades.</p> <p>DIVS Chad Williamson STEQ with 3 T2 Tractor Plow STEQ with 4 T3 Tractor Plow</p> <p>Medical Emergency Channel: Command ETA for Ambulance to Scene: Air: 10 mins Ground: 15 mins Approved Helispot: Drop Point 1 Lat: N 30 30.929 Long: W 82 14.174 <b>Primary</b> - Ambulance is ground contact with air ambulance <b>Secondary</b> - IWI- IC or approved person will use channel 16 (Air Guard) for ground contact with air ambulance</p>						
<b>8. Division/Group Communication Summary</b>						
Function	Channel	RX Frequency N/W	RX Tone/NAC	TX Frequency N/W	TX Tone/NAC	Mode
AIR TO GROUND	4	169.2000N	NONE	169.2000N	NONE	A
COMMAND	5	159.4650N	NONE	151.1450N	123.0	A
TACTICAL	6	159.3900N	NONE	159.3900N	156.7	A
TACTICAL	7	154.3025N	NONE	154.3025N	156.7	A
AIR TO GROUND	14	166.6750N	NONE	166.6750N	NONE	A
AIR TO GROUND	15	169.1500N	NONE	169.1500N	NONE	A
AIR GUARD	16	168.6250N	NONE	168.6250N	110.9	A
<b>9. Prepared By (Resource Unit Leader)</b>			<b>Approved By (Planning Section Chief)</b>		<b>Date</b>	<b>Time</b>
DONNA THOMAS			BRIAN ELDREDGE		05/12/2017	0951

## Division/Group Assignment List (ICS 204 WF)

<b>1. Incident Name:</b>		<b>3.</b>				
WEST MIMS		<b>IV</b>		<b>CONTINGENCY</b>		
<b>2. Operational Period:</b> DAY SHIFT 0830-2030						
Date/Time From: 05/13/2017 0730 SAT	Date/Time To: 05/13/2017 1930 SAT					
<b>4. Operations Personnel</b>						
<b>PLANNING OPERATIONS CHIEF</b>	STEVE WEAVER, DAVE WALKER JEREMY BRAND (T)	<b>OPERATIONS CHIEF</b>	JIM DURRWACHTER L. SMITH (T), S. BOWMAN (T)			
<b>BRANCH DIRECTOR</b>	STEVE MILLER	<b>DIVISION/GROUP SUPERVISOR</b>	BLAIR JOINER (GA) CHAD WILLIAMSON (FL)			
<b>AIR ATTACK SUPERVISOR</b>	TIM FAUST	<b>SAFETY</b>	BRAD LIDELL, MIKE COOK TONY RIVERS (T)			
<b>5. Resources Assigned this Period</b>						
Strike Team / Task Force / Resource Designator	LWD	Leader	Number Persons	Drop Off PT./Time	Pick Up PT./Time	
GEORGIA						
STEQ		JAMEY SMITH				
TPL ATKINSON 60/70		HARPER				
TPL BRANTLEY 62/72		EDGY				
TPL CLINCH 62/72		BROWN				
STEQ		THEO CRADDOCK				
TPL BEH HILL 60/70		ASH				
TPL MITCHELL 60/70		SINGLETON				
TPL EARLY 60/70		STANIFER				
TPL BROOKS 62/72		HARDEN				
ENG6 COWETTA 86		EVANS & BUTTS				
ENG6 JONES 86		SAUNDERS & PRESCOTT				
ENG6 MCDUFFIE 86		PEEBLES & ELLSION				
STEQ		TIM CROSBY				
TPL APPLING 62/72		YAWN				
TPL LOWNDES 63/73		STONE				
TPL BACON 61/71		TAYLOR				
<b>8. Division/Group Communication Summary</b>						
Function	Channel	RX Frequency N/W	RX Tone/NAC	TX Frequency N/W	TX Tone/NAC	Mode
AIR TO GROUND	4	169.2000N	NONE	169.2000N	NONE	A
TACTICAL	6	159.3900N	NONE	159.3900N	156.7	A
AIR TO GROUND	14	166.6750N	NONE	166.6750N	NONE	A
AIR TO GROUND	15	169.1500N	NONE	169.1500N	NONE	A
AIR GUARD	16	168.6250N	NONE	168.6250N	110.9	A
<b>9. Prepared By (Resource Unit Leader)</b>		<b>Approved By (Planning Section Chief)</b>		<b>Date</b>	<b>Time</b>	
DONNA THOMAS		BRIAN ELDREDGE		05/12/2017	0951	

## Division/Group Assignment List (ICS 204 WF)

<b>1. Incident Name:</b>			<b>3.</b>			
WEST MIMS			<b>IV</b>		<b>CONTINGENCY</b>	
<b>2. Operational Period:</b> DAY SHIFT 0830-2030						
Date/Time From: 05/13/2017 0730 SAT		Date/Time To: 05/13/2017 1930 SAT				
<b>4. Operations Personnel</b>						
<b>PLANNING OPERATIONS CHIEF</b>		STEVE WEAVER, DAVE WALKER JEREMY BRAND (T)		<b>OPERATIONS CHIEF</b>		JIM DURRWACHTER L. SMITH (T), S. BOWMAN (T)
<b>BRANCH DIRECTOR</b>		STEVE MILLER		<b>DIVISION/GROUP SUPERVISOR</b>		BLAIR JOINER (GA) CHAD WILLIAMSON (FL)
<b>AIR ATTACK SUPERVISOR</b>		TIM FAUST		<b>SAFETY</b>		BRAD LIDELL, MIKE COOK TONY RIVERS (T)
<b>5. Resources Assigned this Period</b>						
Strike Team / Task Force / Resource Designator		LWD	Leader	Number Persons	Drop Off PT./Time	Pick Up PT./Time
FLORIDA						
STEQ			SMITHERMAN			
TPL GAINESVILLE 50			SMITH			
TPL GAINESVILLE 36			DISNEY			
TPL FIELD OPS 36			WILLIAMS			
TPL FIELD OPS 34			DEHOFF			
ENG6 HAMBERSHAM 86			ANDERSON & BROWN			
ENG6 POLK 86			RUMLEY & ROLAND			
ENG6 TATTNAIL 86			BOULINEAU & JONES			
<b>6. Control Operations/Work Assignments:</b>						
Purpose: To provide suppression support for incident						
Task: Resources are ready upon call for IA or extended attack						
End Shift: Ready support resources available to respond to protect structures, timberland and other resource values at risk.						
<b>7. Special Instructions:</b>						
<ul style="list-style-type: none"> <li>Staged at Jon Bethea, resources are assigned as needed</li> <li>GA resources report to staging on swing shift hours 1200-2400</li> </ul>						
<b>8. Division/Group Communication Summary</b>						
Function	Channel	RX Frequency N/W	RX Tone/NAC	TX Frequency N/W	TX Tone/NAC	Mode
AIR TO GROUND	4	169.2000N	NONE	169.2000N	NONE	A
TACTICAL	6	159.3900N	NONE	159.3900N	156.7	A
AIR TO GROUND	14	166.6750N	NONE	166.6750N	NONE	A
AIR TO GROUND	15	169.1500N	NONE	169.1500N	NONE	A
AIR GUARD	16	168.6250N	NONE	168.6250N	110.9	A
<b>9. Prepared By (Resource Unit Leader)</b>			<b>Approved By (Planning Section Chief)</b>		<b>Date</b>	<b>Time</b>
DONNA THOMAS			BRIAN ELDREDGE		05/12/2017	0951

## Division/Group Assignment List (ICS 204 WF)

<b>1. Incident Name:</b>			<b>3.</b>			
WEST MIMS			<b>IV</b>		<b>Division/Group:</b>	
<b>2. Operational Period:</b> DAY SHIFT 0830-2030					<b>STRUCTURE PROTECTION</b>	
Date/Time From: 05/13/2017 0730 SAT		Date/Time To: 05/13/2017 1930 SAT				
<b>4. Operations Personnel</b>						
<b>PLANNING OPERATIONS CHIEF</b>		STEVE WEAVER, DAVE WALKER JEREMY BRAND (T)		<b>OPERATIONS CHIEF</b>		
<b>BRANCH DIRECTOR</b>		RON SMITH		<b>STRUCTURE PROTECTION</b>		
<b>SAFETY</b>		LARRY CONNELL CHARLIE PATTERSON (T)		JIM DURRWACHTER, SHANNON BOWMAN (T) , L. SMITH (T)  CRAIG ROBERTSON;RANDY JONES		
<b>5. Resources Assigned this Period</b>						
Strike Team / Task Force / Resource Designator		LWD	Leader	Number Persons	Drop Off PT./Time	Pick Up PT./Time
CREW - T2IA - NMCIF - ACOMA #1 C-12		05/25	ANDREW M HENRY	21		
STEN O-327		05/19	LARRY BLYTHE	1		
ENG6 - OK-CNA #0861 E-411		05/19	RUBEN CHUCKLUCK	3		
ENG6 - OK-OSA #0661 E-412		05/19	ROSS WALKER	3		
ENG6 OK-WEA #1061 E-413		05/19	ALAN PRATT	3		
ENG6 NC-ECA #5261 E-414		05/19	CHARLES PARRISH	3		
ENG6 - NC-ECA #5262 E-415		05/19	MARIO ESQUIVEL	3		
ENG6 - E483		05/24	TONY REBO	4		
TFLD O-352		05/19	DENNIS WILSON	1		
ENG3 E-422		05/21	BRENT KISSICK	5		
ENG3 E-423		05/20	DUSTIN LOPEZ	5		
DOZ3 E-449		05/19	STEVE BATTLE	1		
HEQB O-275		05/14	CHARLES DANIELS	1		
JD 6415 - ROT RANCH E-73		05/14	DARYL	1		
MAST ROT RANCH E-74		05/14	PARISH	1		
LOWBOY - ROT RANCH E-75		05/14				
FUEL TRUCK		05/14		1		
<b>8. Division/Group Communication Summary</b>						
Function	Channel	RX Frequency N/W	RX Tone/NAC	TX Frequency N/W	TX Tone/NAC	Mode
AIR TO GROUND	4	169.2000N	NONE	169.2000N	NONE	A
COMMAND	5	159.4650N	NONE	151.1450N	123.0	A
TACTICAL	13	159.4125N	NONE	159.4125N	NONE	A
AIR TO GROUND	14	166.6750N	NONE	166.6750N	NONE	A
AIR TO GROUND	15	169.1500N	NONE	169.1500N	NONE	A
AIR GUARD	16	168.6250N	NONE	168.6250N	110.9	A
<b>9. Prepared By (Resource Unit Leader)</b>			<b>Approved By (Planning Section Chief)</b>		<b>Date</b>	<b>Time</b>
DONNA THOMAS			BRIAN ELDREDGE		05/12/2017	0951



## Division/Group Assignment List (ICS 204 WF)

<b>1. Incident Name:</b>			<b>3.</b>			
WEST MIMS			<b>IV</b>		<b>Division/Group: STRUCTURE PROTECTION</b>	
<b>2. Operational Period:</b> DAY SHIFT 0830-2030						
Date/Time From: 05/13/2017 0730 SAT		Date/Time To: 05/13/2017 1930 SAT				
<b>4. Operations Personnel</b>						
<b>PLANNING OPERATIONS CHIEF</b>		STEVE WEAVER, DAVE WALKER JEREMY BRAND (T)		<b>OPERATIONS CHIEF</b>		JIM DURRWACHTER, SHANNON BOWMAN (T) , L. SMITH (T)
<b>BRANCH DIRECTOR</b>		RON SMITH		<b>STRUCTURE PROTECTION</b>		CRAIG ROBERTSON; RANDY JONES
<b>SAFETY</b>		LARRY CONNELL CHARLIE PATTERSON (T)				
<b>5. Resources Assigned this Period</b>						
Strike Team / Task Force / Resource Designator		LWD	Leader	Number Persons	Drop Off PT./Time	Pick Up PT./Time
STEQ O-421		05/23	MARIO MARQUEZ	1		
TPL3 - ORANGE SPRINGS CONSTRUCTION, INC - E-481		05/19	LESLIE JETER	2		
SOF2 O-281.59		05/15	CHARLES E PATTERSON (T)	1		
<b>6. Control Operations/Work Assignments:</b>						
Purpose: Ensure timely response to protect human life, property and public and private infrastructure.						
Task: Protect city of St. George residents and private property. Affirm contact procedures with Charlton County and Sheriff Dept to assure effective communication in event of or post community evacuation needs. Implement structure protection efforts within DIV Z, A and Branch III, DIV O, N and M as needed. Coordinate with County EMS to determine special needs for road access.						
End State: Maintain communications with appropriate emergency management and Law Enforcement to protect public. Confine fire perimeter to reduce threats to structures, utilities and other values at risk.						
<b>7. Special Instructions:</b>						
Coordinate with Charlton County Structure Group. Jesse Jordon 912-816-6063 located at St George Elementary School.						
<b>8. Division/Group Communication Summary</b>						
Function	Channel	RX Frequency N/W	RX Tone/NAC	TX Frequency N/W	TX Tone/NAC	Mode
AIR TO GROUND	4	169.2000N	NONE	169.2000N	NONE	A
COMMAND	5	159.4650N	NONE	151.1450N	123.0	A
TACTICAL	13	159.4125N	NONE	159.4125N	NONE	A
AIR TO GROUND	14	166.6750N	NONE	166.6750N	NONE	A
AIR TO GROUND	15	169.1500N	NONE	169.1500N	NONE	A
AIR GUARD	16	168.6250N	NONE	168.6250N	110.9	A
<b>9. Prepared By (Resource Unit Leader)</b>			<b>Approved By (Planning Section Chief)</b>		<b>Date</b>	<b>Time</b>
DONNA THOMAS			BRIAN ELDREDGE		05/12/2017	0951

## Division/Group Assignment List (ICS 204 WF)

<b>1. Incident Name:</b>			<b>3.</b>			
WEST MIMS			<b>Branch:</b>		<b>Division/Group:</b>	
<b>2. Operational Period:</b> DAY SHIFT 0830-2030			<b>IV</b>		<b>Y</b>	
Date/Time From: 05/13/2017 0730 SAT		Date/Time To: 05/13/2017 1930 SAT				
<b>4. Operations Personnel</b>						
<b>PLANNING OPERATIONS CHIEF</b>		STEVE WEAVER, DAVE WALKER JEREMY BRAND (T)		<b>OPERATIONS CHIEF</b>		JIM DURRWACHTER L. SMITH (T), S. BOWMAN (T)
<b>BRANCH DIRECTOR</b>		RON SMITH		<b>DIVISION/GROUP SUPERVISOR</b>		JOE MORRIS
<b>AIR ATTACK SUPERVISOR</b>		TIM FAUST		<b>SAFETY</b>		LARRY CONNELL
<b>5. Resources Assigned this Period</b>						
Strike Team / Task Force / Resource Designator		LWD	Leader	Number Persons	Drop Off PT./Time	Pick Up PT./Time
TFLD O-508		05/25	LISA M GOWE	1	DP 46/0800	DP 46/2000
MODULE FWS - BALCONES O-440		05/23	ROB VERNACHIA	7	DP 46/0800	DP 46/2000
STEN O-423		05/23	MATT SMITH	1	DP 46/0800	DP 46/2000
ENG6 MURRAY 86 - 4201016 E-61		05/26	KENNETH HARKINS	2	DP 46/0800	DP 46/2000
ENG6 FRANKLIN 86 - GFC4202065 E-59		05/26	DOUGLAS SLAY	2	DP 46/0800	DP 46/2000
ENG6 CHATTOOGA 86 E-60		05/26	ETHAN BEAID	2	DP 46/0800	DP 46/2000
ENG6 NMSNF - ENGINE 661 E-604		05/26	LARRY MARTINEZ	3	DP 46/0800	DP 46/2000
ENGINE - T6 - BANKHEAD E611 E-654		05/26	GARY CRAIG MOORE	3	DP 46/0800	DP 46/2000
STEQ O-357		05/21	JASON ODOM	1	DP 46/0800	DP 46/2000
STEQ (T) O-372		05/19	JOE N BRINSON JR	1	DP 46/0800	DP 46/2000
DOZ2 - 750K - VIN# 242515 E-505		05/25	BRIAN JENKINS	1	DP 46/0800	DP 46/2000
DOZER - T2 - 650K - VIN# 271777 E-528		05/25	KURT HALL	1	DP 46/0800	DP 46/2000
DOZ2 - 750K - VIN# 271777 E-530		05/25	GREG DAVIS	1	DP 46/0800	DP 46/2000
WT - 357 - PB 350505 HASSELL E-476		05/26	ROBERT EDENFIELD		DP 46/0800	DP 46/2000
DOZ2 - JD 750K - VIN# 268173 E-504		05/25	JAIME EDENFIELD	1	DP 46/0800	DP 46/2000
SOF2 O-461		05/24	LARRY KLOCK	1	DP 46/0800	DP 46/2000
<b>8. Division/Group Communication Summary</b>						
Function	Channel	RX Frequency N/W	RX Tone/NAC	TX Frequency N/W	TX Tone/NAC	Mode
AIR TO GROUND	4	169.2000N	NONE	169.2000N	NONE	A
COMMAND	5	159.4650N	NONE	151.1450N	123.0	A
TACTICAL	7	154.3025N	NONE	154.3025N	156.7	A
TACTICAL	12	159.4425N	NONE	159.4425N	NONE	A
AIR TO GROUND	14	166.6750N	NONE	166.6750N	NONE	A
AIR TO GROUND	15	169.1500N	NONE	169.1500N	NONE	A
AIR GUARD	16	168.6250N	NONE	168.6250N	110.9	A
<b>9. Prepared By (Resource Unit Leader)</b>			<b>Approved By (Planning Section Chief)</b>		<b>Date</b>	<b>Time</b>
DONNA THOMAS			BRIAN ELDREDGE		05/12/2017	2000

## Division/Group Assignment List (ICS 204 WF)

<b>1. Incident Name:</b>			<b>3.</b>			
WEST MIMS			<b>IV</b>	<b>Y</b>		
<b>2. Operational Period:</b> DAY SHIFT 0830-2030						
Date/Time From:	SAT	Date/Time To:	SAT			
05/13/2017 0730		05/13/2017 1930				
<b>4. Operations Personnel</b>						
<b>PLANNING OPERATIONS CHIEF</b>	STEVE WEAVER, DAVE WALKER JEREMY BRAND (T)		<b>OPERATIONS CHIEF</b>	JIM DURRWACHTER L. SMITH (T), S. BOWMAN (T)		
<b>BRANCH DIRECTOR</b>	RON SMITH		<b>DIVISION/GROUP SUPERVISOR</b>	JOE MORRIS		
<b>AIR ATTACK SUPERVISOR</b>	TIM FAUST		<b>SAFETY</b>	LARRY CONNELL		
<b>6. Control Operations/Work Assignments:</b>						
Purpose: Keep fire East and North of DP 46 to DP 47						
Patrol and mop up within 50 ft of fire perimeter. Respond to any new starts within Div. Determine and report contained line to Planning OSC1.						
End State: Confine fire perimeter to reduce threats and minimize damage to private timberlands and resources values at risk.						
<b>7. Special Instructions:</b>						
<b>8. Division/Group Communication Summary</b>						
Function	Channel	RX Frequency N/W	RX Tone/NAC	TX Frequency N/W	TX Tone/NAC	Mode
AIR TO GROUND	4	169.2000N	NONE	169.2000N	NONE	A
COMMAND	5	159.4650N	NONE	151.1450N	123.0	A
TACTICAL	7	154.3025N	NONE	154.3025N	156.7	A
TACTICAL	12	159.4425N	NONE	159.4425N	NONE	A
AIR TO GROUND	14	166.6750N	NONE	166.6750N	NONE	A
AIR TO GROUND	15	169.1500N	NONE	169.1500N	NONE	A
AIR GUARD	16	168.6250N	NONE	168.6250N	110.9	A
<b>9. Prepared By (Resource Unit Leader)</b>			<b>Approved By (Planning Section Chief)</b>		<b>Date</b>	<b>Time</b>
DONNA THOMAS			BRIAN ELDREDGE		05/12/2017	2000

## Division/Group Assignment List (ICS 204 WF)

<b>1. Incident Name:</b>			<b>3.</b>			
WEST MIMS			<b>Branch:</b>		<b>Division/Group:</b>	
<b>2. Operational Period:</b> DAY SHIFT 0830-2030			<b>IV</b>		<b>Z</b>	
Date/Time From: 05/13/2017 0730 SAT		Date/Time To: 05/13/2017 1930 SAT				
<b>4. Operations Personnel</b>						
<b>PLANNING OPERATIONS CHIEF</b>		STEVE WEAVER; DAVE WALKER JEREMY BRAND (T)		<b>OPERATIONS CHIEF</b>		PETER L MYERS
<b>BRANCH DIRECTOR</b>		STEVE MILLER		<b>DIVISION/GROUP SUPERVISOR</b>		TRENT INGRAM
<b>SAFETY</b>		LARRY CONNELL		<b>AIR ATTACK SUPERVISOR</b>		TIMOTHY FAUST
<b>5. Resources Assigned this Period</b>						
Strike Team / Task Force / Resource Designator		LWD	Leader	Number Persons	Drop Off PT./Time	Pick Up PT./Time
STEN O-354		05/20	MARTIN CASSELLIUS	1	DP 40/0800	DP 40/2000
ENG6 - NC-NCS - PJ-9126 E-455		05/21	ASHLEY KING	2	DP 40/0800	DP 40/2000
ENG6 - NC-NCS - PJ-9244 E-485		05/21	JASON O'NEAL	2	DP 40/0800	DP 40/2000
HEQB O-356		05/20	LANDON CHASE BASS	1	DP 40/0800	DP 40/2000
TFLD O-350		05/20	NATHANIEL TODD NIGHTINGALE	1	DP 40/0800	DP 40/2000
TFLD O-351		05/20	MICHAEL SEAN STANAWAY	1	DP 40/0800	DP 40/2000
TPL3 - WILDLANDS FIRE SRVC INC - 99744 E-465		05/21	NIC COOKSEY	2	DP 40/0800	DP 40/2000
STEN O-414		05/24	TIEGE DOWNES	1	DP 40/0800	DP 40/2000
ENG6 - REDBIRD E6171 E-447		05/21	RUPERT NOWLIN	2	DP 40/0800	DP 40/2000
ENG6 - NC-NCS - PP-7115 E-456		05/21	ROBERT WHITE	2	DP 40/0800	DP 40/2000
ENG6 - OLF - E-692 E-482		05/22	LYNDSEY KUPFER	4	DP 40/0800	DP 40/2000
ENG6 - NC-NCS - PJ-7956 E-484		05/21	JOSEPH BRANDON WEBB	2	DP 40/0800	DP 40/2000
ENGINE - T6 - NC-NCS - PJ-9218 E-486		05/21	JOHN KESSLER	2	DP 40/0800	DP 40/2000
STEQ O-357		05/21	JASON ODOM	1	DP 40/0800	DP 40/2000
<b>8. Division/Group Communication Summary</b>						
Function	Channel	RX Frequency N/W	RX Tone/NAC	TX Frequency N/W	TX Tone/NAC	Mode
AIR TO GROUND	4	169.2000N	NONE	169.2000N	NONE	A
COMMAND	5	159.4650N	NONE	151.1450N	123.0	A
TACTICAL	11	163.1000N	NONE	163.1000N	NONE	A
AIR TO GROUND	14	166.6750N	NONE	166.6750N	NONE	A
AIR TO GROUND	15	169.1500N	NONE	169.1500N	NONE	A
AIR GUARD	16	168.6250N	NONE	168.6250N	110.9	A
<b>9. Prepared By (Resource Unit Leader)</b>			<b>Approved By (Planning Section Chief)</b>		<b>Date</b>	<b>Time</b>
MISSY FORDER			BRIAN ELDREDGE		05/12/2017	0951

## Division/Group Assignment List (ICS 204 WF)

<b>1. Incident Name:</b>			<b>3.</b>			
WEST MIMS			<b>Branch:</b>		<b>Division/Group:</b>	
<b>2. Operational Period:</b> DAY SHIFT 0830-2030			<b>IV</b>		<b>Z</b>	
Date/Time From: 05/13/2017 0730 SAT		Date/Time To: 05/13/2017 1930 SAT				
<b>4. Operations Personnel</b>						
<b>PLANNING OPERATIONS CHIEF</b>		STEVE WEAVER; DAVE WALKER JEREMY BRAND (T)		<b>OPERATIONS CHIEF</b>		PETER L MYERS
<b>BRANCH DIRECTOR</b>		STEVE MILLER		<b>DIVISION/GROUP SUPERVISOR</b>		TRENT INGRAM
<b>SAFETY</b>		LARRY CONNELL		<b>AIR ATTACK SUPERVISOR</b>		TIMOTHY FAUST
<b>5. Resources Assigned this Period</b>						
Strike Team / Task Force / Resource Designator		LWD	Leader	Number Persons	Drop Off PT./Time	Pick Up PT./Time
TPL2 OK-56 E-35		04/20	JEFF SWAIN	1	DP 40/0800	DP 40/2000
STEQ O-300		05/16	JAMES MASHBURN	1	DP 40/0800	DP 40/2000
HEQB (T) O-372		05/19	JOE N BRINSON JR	1	DP 40/0800	DP 40/2000
TPL3 - GFC3288 E-367		05/16	ROB MORE	1	DP 40/0800	DP 40/2000
TPL3 - GFC3234 E-368		05/16	BRANDON DAVIS	1	DP 40/0800	DP 40/2000
TPL5 - GFC3219 E-369		05/16	RUSSELL FOWLER	1	DP 40/0800	DP 40/2000
WT2 - VIN# 009542 E-409		05/23	DALE GAY	1	DP 40/0800	DP 40/2000
ENG6 - ATTACK-ONE FIRE MANAGEMENT SERVICES INC E-537		05/23	WES COLEMAN	2	DP 40/0800	DP 40/2000
ENG6 - NC-NCS - PJ-7577 E-532		05/23	BRETT EVANS	2	DP 40/0800	DP 40/2000
TPL3 - NC-NCS - 3X65 E-569		05/24	DANIEL TAYLER	2	DP 40/0800	DP 40/2000
TPL3 - NC-NCS - 3X77 E-568		05/24	DENNIS LEE REES	2	DP 40/0800	DP 40/2000
ENG6 - BOULDER COUNTY SHERIFF - ENGINE 6532 E-538		05/24	PETER KORETZ	3	DP 40/0800	DP 40/2000
ENG6 - FOUR MILE FD - BRUSH 4632 E-540		05/24	ZACH LITTLEFIELD	3	DP 40/0800	DP 40/2000
TFLD O-417		05/24	ERIC R HUGHES	1	DP 40/0800	DP 40/2000
TFLD O-508		05/25	LISA M GOWE	1	DP 40/0800	DP 40/2000
<b>8. Division/Group Communication Summary</b>						
Function	Channel	RX Frequency N/W	RX Tone/NAC	TX Frequency N/W	TX Tone/NAC	Mode
AIR TO GROUND	4	169.2000N	NONE	169.2000N	NONE	A
COMMAND	5	159.4650N	NONE	151.1450N	123.0	A
TACTICAL	11	163.1000N	NONE	163.1000N	NONE	A
AIR TO GROUND	14	166.6750N	NONE	166.6750N	NONE	A
AIR TO GROUND	15	169.1500N	NONE	169.1500N	NONE	A
AIR GUARD	16	168.6250N	NONE	168.6250N	110.9	A
<b>9. Prepared By (Resource Unit Leader)</b>			<b>Approved By (Planning Section Chief)</b>		<b>Date</b>	<b>Time</b>
MISSY FORDER			BRIAN ELDREDGE		05/12/2017	0951

## Division/Group Assignment List (ICS 204 WF)

<b>1. Incident Name:</b>			<b>3.</b>			
WEST MIMS			<b>Branch:</b>		<b>Division/Group:</b>	
<b>2. Operational Period:</b> <b>DAY SHIFT 0830-2030</b>			<b>IV</b>		<b>Z</b>	
Date/Time From: 05/13/2017 0730                    SAT		Date/Time To: 05/13/2017 1930                    SAT				
<b>4. Operations Personnel</b>						
<b>PLANNING OPERATIONS CHIEF</b>		STEVE WEAVER; DAVE WALKER JEREMY BRAND (T)		<b>OPERATIONS CHIEF</b>		PETER L MYERS
<b>BRANCH DIRECTOR</b>		STEVE MILLER		<b>DIVISION/GROUP SUPERVISOR</b>		TRENT INGRAM
<b>SAFETY</b>		LARRY CONNELL		<b>AIR ATTACK SUPERVISOR</b>		TIMOTHY FAUST
<b>5. Resources Assigned this Period</b>						
Strike Team / Task Force / Resource Designator		LWD	Leader	Number Persons	Drop Off PT./Time	Pick Up PT./Time
MODULE - WILDLAND FIRE - SW SAGUARO NP O-477		05/21	JASON THIVENER	10	DP 40/0800	DP 40/2000
ENG6 - BUSH FIRE - VIN# 260743 E-541		05/24	ROBBIE ROBERTSON	3	DP 40/0800	DP 40/2000
ENG6 - NMSNF - ESPANOLA RD - ENGINE 661 E- 604		05/26	LARRY MARTINEZ	3	DP 40/0800	DP 40/2000
ENG6 - ENG T6 - NMN6S - ENG 61 E-611		05/26	MICHAEL BALIZAN	3	DP 40/0800	DP 40/2000
EMG6 - ENGINE - T6 - LANE ENTERPRISES, INC. - A05558 - 217 E-608		05/26	DAVID LANE	3	DP 40/0800	DP 40/2000
ENG6 ENGINE - T6 - LANE ENTERPRISES, INC. - D07568 - 218 E-609		05/26	BARBARA STEVENS	3	DP 40/0800	DP 40/2000
EMPF E-314		05/17	STAN BANGS	1	DP 40/0800	DP 40/2000
SOF2 O-492		05/25	TIMOTHY OLIVERIUS	1	DP 40/0800	DP 40/2000
<b>6. Control Operations/Work Assignments:</b>						
Purpose: Keep fire North and West between DP 47 and DP 40.						
Task: Prep control lines with dozers to establish or strengthen containment. Coordinate strategic firing with unified ICs. Coordinate with Structure Protection specialist on triage of structures for point protection. Utilize aviation assets to protect human life and property supporting ground assets.						
End State: Contain fire perimeter to minimize damage to both public and private infrastructure and protect resource values at risk.						
<b>7. Special Instructions:</b>						
Medical Emergency Channel: Command ETA for Ambulance to Scene: Air: 7 mins Ground: 15 mins						
<b>8. Division/Group Communication Summary</b>						
Function	Channel	RX Frequency N/W	RX Tone/NAC	TX Frequency N/W	TX Tone/NAC	Mode
AIR TO GROUND	4	169.2000N	NONE	169.2000N	NONE	A
COMMAND	5	159.4650N	NONE	151.1450N	123.0	A
TACTICAL	11	163.1000N	NONE	163.1000N	NONE	A
AIR TO GROUND	14	166.6750N	NONE	166.6750N	NONE	A
AIR TO GROUND	15	169.1500N	NONE	169.1500N	NONE	A
AIR GUARD	16	168.6250N	NONE	168.6250N	110.9	A
<b>9. Prepared By (Resource Unit Leader)</b>			<b>Approved By (Planning Section Chief)</b>		<b>Date</b>	<b>Time</b>
MISSY FORDER			BRIAN ELDREDGE		05/12/2017	0951

## Division/Group Assignment List (ICS 204 WF)

<b>1. Incident Name:</b>			<b>3.</b>			
WEST MIMS			<b>IV</b>		<b>Z</b>	
<b>2. Operational Period:</b> DAY SHIFT 0830-2030						
Date/Time From: 05/13/2017 0730 SAT		Date/Time To: 05/13/2017 1930 SAT				
<b>4. Operations Personnel</b>						
<b>PLANNING OPERATIONS CHIEF</b>		STEVE WEAVER; DAVE WALKER JEREMY BRAND (T)		<b>OPERATIONS CHIEF</b>		PETER L MYERS
<b>BRANCH DIRECTOR</b>		STEVE MILLER		<b>DIVISION/GROUP SUPERVISOR</b>		TRENT INGRAM
<b>SAFETY</b>		LARRY CONNELL		<b>AIR ATTACK SUPERVISOR</b>		TIMOTHY FAUST
<b>7. Special Instructions:</b>						
<p>Approved Helispot: POGO Helibase                  Lat: N 30 44.26                  Long: W 82 07.69  <b>Primary</b> - Ambulance is ground contact with air ambulance  <b>Secondary</b> - IWI- IC or approved person will use channel 16 (Air Guard) for ground contact with air ambulance</p> <p>2 - TPL Okie - O/H Donnie Harris DIVS                  1 - 1050 KG - with operator GFC                  1 - Appalachia 750 (Lease) with operator                  DIVS Blair Joiner                  STEQ with 3-T2 Tractor Plow                  STEQ (Weaver) with 4-T3 Tractor Plow</p>						
<b>8. Division/Group Communication Summary</b>						
Function	Channel	RX Frequency N/W	RX Tone/NAC	TX Frequency N/W	TX Tone/NAC	Mode
AIR TO GROUND	4	169.2000N	NONE	169.2000N	NONE	A
COMMAND	5	159.4650N	NONE	151.1450N	123.0	A
TACTICAL	11	163.1000N	NONE	163.1000N	NONE	A
AIR TO GROUND	14	166.6750N	NONE	166.6750N	NONE	A
AIR TO GROUND	15	169.1500N	NONE	169.1500N	NONE	A
AIR GUARD	16	168.6250N	NONE	168.6250N	110.9	A
<b>9. Prepared By (Resource Unit Leader)</b>			<b>Approved By (Planning Section Chief)</b>		<b>Date</b>	<b>Time</b>
MISSY FORDER			BRIAN ELDREDGE		05/12/2017	0951

**AIR OPERATIONS SUMMARY (ICS220)**

Prepared by: John Mason

Prepared Date: 5/12/2017

Prepared Time: 18:00

<b>1. INCIDENT NAME:</b> West Mims	<b>2. OPS PERIOD DATE:</b> 5/13/17	<b>START TIME:</b> 0900	<b>END TIME:</b> 2030	<b>SUNRISE:</b> 0634	<b>SUNSET TIME:</b> 2014 (Folkston)
<b>3. REMARKS Safety Notes: Hazards (SEE AND AVOID GENERAL AVIATION TRAFFIC AND AERIAL HAZARDS)</b>  -Maintain clear communications; confirm that drop location is clear; ground personnel state: "Clear to Drop" -Incident Aircraft conduct flight following with Pogo Helibase when ATGS is not up. -Aerial Ignition Group: Helicopter 7HX with PLDO; FIRB, Joe Chastain.  <b>ORDERING/FLIGHT REQUESTS</b> -Request Helicopter water drops through Air Attack -Request aerial ignition through Operations -Request Tankers/Retardant through Air Attack -Requests for Reconnaissance missions must go through Operations for pre-approval			<b>4. READY ALERT AIRCRAFT:</b>  <b>7HX</b>  Call 911 to request LIFEFLIGHT aircraft.		<b>5. TFR:</b> 7/1766; Surface to 3500' MSL; See NOTAM for full description. Frequency 120.8500
<b>E-MAIL AIRCRAFT COSTS DAILY AT END OF SHIFT TO: john_mason@fws.gov</b>					

6. PERSONNEL	NAME	PHONE #	7. FREQUENCIES	AM	FM	8. FIXED-WING- Type/ Make-Model/ N#/ Base
AOBD AOBD -Deputy	Tim Faust Brad Bernardy  Air Ops Desk	702-271-6055 601-540-6528  912-637-5133	A/A - Fixed Wing A/A - Rotor / TFR  A/G (Request) A/G 66 (Primary) A/G 72 (Secondary)	120.3500 120.8500		AIR ATTACK – ATGS – Mark Nunez / AC690 / N690RA / LCQ 805-975-5227 ATGS(T) – Derek Wheeler 530-355-3274 ATGS – Chris Worrel / Kodiak / N420Q / LCQ 850-447-4597 ATGS(T) – Mike Bot 623-696-8532
ASGS	John Mason	478-951-7319				LEAD – ASM – Bravo xx As assigned
HEB2 - Pogo HEB1 - Lake City HEB1(T) - Lake City	Marc 'Boomer' Rudkin Nate Alexander Angie Ruble	307-287-0440 406-491-0878 573-241-0604	Deck/TOLC (Pogo) Deck (Lake City)		168.0500 163.100	TANKERS – As available (T-41) BAE146 / N471NA / LCQ (Off Fridays) (T-1) BAE146 / N473NA / LCQ (Off Sundays) (T-3) BAE146 / N475NA / LCQ (Off Tuesdays) (T-2) BAE146 / N474NA / LCQ (Off Mondays) (T-164) RJ-85A / N374AC / LCQ (Off Thursdays) (T-911) DC-10 / N17085 / CHA
	Pogo Helibase	912-496-4415				
	Lake City Helibase	561-512-6333	Air Guard		168.625 (110.9)	

**9. HELICOPTER** Remarks Box Legend: C=Cargo P=Passengers B=Bucket SN=Snorkel R=Rappel H=Hoist SH=Short Haul ME=Medical Evacuation/ Extraction Exu=Exclusive Use

FAA N#	T Y	MAKE/ MODEL	BASE	START	READY to FLY	REMARKS	FAA N#	T Y	MAKE/ MODEL	BASE	START	READY to FLY	REMARKS
27HX	3	Bell 407	Pogo (3GE1)	0700	0830	P, B Exu	611CK (701)	1	SH-3H / S-61	Lake City (LCQ)	0700	0730	SN Exu
351FW	3	AS350 B-2	Pogo (3GE1)	0700	0830	P, B Exu	612CK (702)	1	SH-3H / S-61	Lake City (LCQ)	0700	0730	SN CWN
471CH	1	CH-47D	Lake City (LCQ)	0700	0730	SN Exu	13FH	1	UH-60A	Lake City (LCQ)	0700	0730	B Exu
161KA	1	K-1200	Lake City (LCQ)	0700	0730	B Exu	137BH	1	S70A-27	Lake City (LCQ)	0700	0730	B *On Loan
699RH	1	K-1200	Lake City (LCQ)	0700	0730	B Exu	472CH	1	CH-47D	Lake City (LCQ)	0700	0730	SN *On Loan



# INCIDENT RADIO COMMUNICATIONS PLAN (ICS 205)

<b>1. Incident Name:</b>			<b>2. Date/Time Prepared:</b>			<b>3. Operational Period: DAY SHIFT 0830-2030</b>				
WEST MIMS			Date: 05/12/2017 Time: 1723			Date/Time From: 05/13/2017 0730 SAT			Date/Time To: 05/13/2017 1930 SAT	
<b>4. Basic Radio Channel Use:</b>										
Zone Group	Ch #	Function	Channel Name/Trunked Radio System Talkgroup	Assignment	RX Freq	RX Tone/NAC	TX Freq	TX Tone/NAC	Mode (A,D, or M)	Remarks
1	1	COMMAND	WEST OKEE REP		167.1250N	156.7	163.1500N	156.7	M	STEPHEN FOSTER STATE PARK
1	2	COMMAND	S. FOSTER	DIV B, C, D	159.1200N	NONE	151.3700N	100.0	A	WEST
1	3	COMMAND	CORNELIA	DIV M/N, IA	159.1200N	NONE	151.3700N	82.5	A	EAST
1	4	AIR TO GROUND	A/G REQUEST	ALL DIVISIONS	169.2000N	NONE	169.2000N	NONE	A	BY REQUEST ONLY
1	5	COMMAND	GFC EDDY	MIMS ICP, DIV A, O,	159.4650N	NONE	151.1450N	123.0	A	DIV Y, Z, ROAD MAINTENANCE, STRUCTURE
1	6	TACTICAL	GFC TAC1	DIV A, C, D,	159.3900N	NONE	159.3900N	156.7	A	FL FFS CONTINGENCY, ROAD MAINTENANCE
1	7	TACTICAL	V FIRE 26	DIV A, Y	154.3025N	NONE	154.3025N	156.7	A	
1	8	TACTICAL	OSCEOLA PROJECT	DIV O, IA	163.7125N	NONE	163.7125N	NONE	A	
1	9	TACTICAL	COMPACT	DIV B	159.2850N	NONE	159.2850N	156.7	A	
1	10	TACTICAL	REFUGE TAC 1	DIV M/N	168.3500N	NONE	168.3500N	NONE	A	
1	11	TACTICAL	REFUGE TAC 2	DIV Z	163.1000N	NONE	163.1000N	NONE	A	
1	12	TACTICAL	FFS 199	DIV C, Y	159.4425N	NONE	159.4425N	NONE	A	
1	13	TACTICAL	FFS 200	DIV D, STRUCTURE	159.4125N	NONE	159.4125N	NONE	A	
1	14	AIR TO GROUND	AIR TO GRD 66	A/G PRIMARY	166.6750N	NONE	166.6750N	NONE	A	AIR / GROUND TACTICAL
1	15	AIR TO GROUND	AIR TO GRD 72	A/G SECONDARY	169.1500N	NONE	169.1500N	NONE	A	AIR / GROUND TACTICAL
1	16	AIR GUARD	AIR GUARD	ALL DIVISIONS	168.6250N	NONE	168.6250N	110.9	A	EMERGENCY AIRCRAFT COMMS
<b>5. Special Instructions:</b>										
<b>6. Prepared By</b> (Communications Unit Leader)				Name: JERRY W. PATRICK				Signature:		
ICS 205				IAP Page				Date/Time: 05/12/2017 1723		

**PHONE LIST - WEST MIMS FIRE**

<b>Position</b>	<b>Name</b>	<b>Phone Number</b>	<b>Position</b>	<b>Name</b>	<b>Phone Number</b>
<b>UNIFIED COMMAND</b>			<b>Telephone lines at ICP</b>		
Red Team IC	Mike Dueitt	850-228-0320	Information/PIO		912-637-5132
Red Team IC(t)	Michael Goicochea	406-865-0975	Air Ops		912-637-5133
GA Forest Commision IC	Buck Kline	912-678-2694	Ordering		912-637-5107
Florida Forest Service IC	Rick Dolan	352-353-5101	Ordering		912-637-5136
Liason Officer	Keith Lawrence	803-522-5264	Ordering Fax		912-637-5104
Liason Officer	J.D.Lee	239-340-4626	Supply		912-637-5138
<b>PUBLIC INFORMATION</b>	Land Line	912-637-5108	Ground Support		912-637-5105
<b>Information Desk</b>		904-452-4627	Information		912-637-5108
Public Information	Catherine Hibbard	413-531-4276	Finance		912-637-5109
Public Information	Bonnie Strawser	252-423-0815	Finance Fax		912-637-5110
Refuge Public Info	Susie Heisey	912-286-3110	Operations		912-637-5112
<b>AGENCY REPRESENTATIVES</b>			Plans		912-637-5115
Refuge FMO	Reese Kerbow	912-276-0167	Checkin		912-637-5137
Refuge AFMO	Reggie Forcine	912-614-4041	Demob		912-637-5113
Refuge Manager	Mike Lusk	912-390-2193	Communications		912-637-5116
DNR Agency Liaison	SGT. Patrick Dupree	404-694-5596			
Ware Co EMA	Bill Parham	229-425-4549			
Clinch Co EMA	Will Joyce	912-520-8581	<b>LAND OWNERS AND OTHER CONTACTS</b>		
Lanier Co EMA	Randy Patten	229-482-5070	Steve Davis	Am Forest Mgmt	912-614-1828
Charlton Co EMA	Bruce Young	912-390-2022	Allen C. Cross	Rayonier US Forest	904-796-7929
Charlton Co Sheriff's Office	Inv. Clay Burnsel	912-276-2628	Dave Gather	Okie Electric	912-390-9755
Georgia EMA	Diane Adams	912-266-5421	Chad Edwards	Railroad Contact	540-797-9918
NC Forest Service	Greg Smith	828-230-8527	Steve Magnolia	FD Coordinator	904-537-5853
<b>PLANNING</b>	Land Line		Terri Jenkins	FWS FD/VFD Contact	912-313-4225
PSC ICP	Brian Eldredge	208-869-6362	Ned Neenan	Legacy Forestry	352-317-0738
PSC Eastside Camp	Terry Pierce	423-596-2694	Ken Zaydel	Social Circle FD	404-205-2738
Fire Behavior Analyst	Gary Jarvis	251-288-1084			
THSP-ARA	Dan Byrd	240-778-5278			
IMET	Angie Enyedi	904-318-4041			
FWS READ	Carl Schmidt	478-365-2088			
FWS READ	Daniel Barrant	352-490-1959			
FWS READ	Howard McClough	912-276-0552			
FWS READ	Erin Daughtrey	912-223-6752			
SITL	Terry Bowerman	423-552-3323			
SITL(t)	Kevin Hiers	229-560-8861			
GISS	Andrew Thompson	706-399-6459			
<b>Finance</b>	General	912-637-5109			
Chief	Bonny Johnson	859-556-1572			
FSC2	Reggie Lanier	912-314-1085			
Comp/Claims	Verma Coleman	470-532-8798			
Procurment	James Meredith	470-532-8810			
Time	Jean Frick	828-361-5361			





## HEALTH AND SAFETY MESSAGE

*“We don’t plan on luck to be safe, we plan on sound risk management and good decisions”....the Red Team*

<b>INCIDENT:</b> West Mims Fire	<b>DATE:</b> Saturday May 13, 2017
<b>Major Hazards &amp; Risks:</b> Critical Fire Behavior, Aviation, Heavy Equipment, Hygiene	
<p><b>Fire Behavior:</b> <i>The fire weather conditions may be a notch down from the past few days, however; there will be a cold front passage coming through the fire around midnight tonight. <b>Winds will be shifting today from the SW to the WNW and overnight to the ENE.</b> Know the location of all personnel throughout the shift. Be heads up to the shifting winds, don’t let them catch you off guard. Be looking ahead to how the winds out of the east will affect your lines especially on the west side of the fire.</i></p> <p><b>Aviation:</b> <i>There are many aircraft operating on this incident. Make sure you know the protocol for ordering them on the air-to-ground request channel 4. Give brief accurate instructions including the lat and long to air attack. <b>Aviation protocols are critical, especially with so many missions.</b> Use aircraft when necessary, but don’t depend on them for your safety.</i></p> <p><b>Heavy Equipment:</b> <i>Identify and clarify the travel routes for equipment. Be careful when parking along highways especially when pulling off and on the pavement <b>“Watch for Traffic”.</b> Be sure there is sufficient road clearance and capacity, especially over bridges. When working around heavy equipment make sure to have eye contact with the operator when crossing their path. Stay 2.5 tree lengths away when equipment is pushing trees over.</i></p> <p><b>Hygiene:</b> <i>So far we have we have had little camp crud. This is a trend we want to continue. Make sure to wash your hands after using the restroom and before eating. If you start to not feel well go to medical right a way to head off a potential illness.</i></p>	
<p><b>YOU notice wind CHANGE!</b></p>	<p><b>Be Heads-Up for potential thunderstorms and cold front passage.</b></p> <ul style="list-style-type: none"> <li>• Lightning LAL 3 <ul style="list-style-type: none"> <li>○ Take shelter in your vehicle or building</li> </ul> </li> <li>• Shifting Winds <ul style="list-style-type: none"> <li>○ Your flanking fire could now be your head fire</li> </ul> </li> <li>• If we get a wetting rain watch your footing especially climbing on equipment</li> <li>• Remember to use your IRPG.</li> </ul>

*Red Team Safety Officers: Brad, Mike, Tony, Larry & Ivan*

## INCIDENT SAFETY ANALYSIS 215A

West Mims Fire - Saturday, May 13, 2017

8. Location	9. Hazard	6. Control or Abatement Action (Engineering, Administrative, PPE, Avoidance, Education, etc)
ALL	Extreme Fire Behavior	<ul style="list-style-type: none"> <li>~ Share weather observations with all personnel assigned to division.</li> <li>~ Establish LCES.</li> <li>~ Establish "Trigger Points" to withdraw.</li> <li>~ Use "Risk Management" process prior to engaging in suppression actions, refer to page 1, IRPG.</li> <li>~ Review Fuel Advisory for FL and southeastern GA.</li> </ul>
ALL	Helicopter Operations	<ul style="list-style-type: none"> <li>~ Helicopter operations should be used for priority missions.</li> <li>~ Stay clear of all bucket drops when suppression actions are in place and allow 1 minute prior to re-entry.</li> <li>~ Pilots or air supervisor ensure ground resources are clear before bucket drops.</li> <li>~ Monitor A-G communications.</li> <li>~ Follow aviation safety guidelines in IRPG and IHOG.</li> <li>~ Ground resources advise pilot of local power lines and local visibility issues.</li> </ul>
ALL	Cold Front Passage	<ul style="list-style-type: none"> <li>~ Watch for wind shifts during the frontal passage.</li> <li>~ Beware of possible lower RH's after the cold front passes if temperatures increase.</li> <li>~ Cold fronts generally move from northwest to southeast.</li> <li>~ The air behind a cold front is noticeably colder and drier than the air ahead of it.</li> </ul>
All	Train Traffic	<ul style="list-style-type: none"> <li>~ Observe warning signs when crossing tracks.</li> <li>~ If no warning lights are posted, bring vehicle to a complete stop and check for incoming trains before crossing.</li> <li>~ Use caution when crossing tracks with low vehicles or trailers.</li> <li>~ Contact CSX to ensure awareness to fire resource locations.</li> </ul>
A, B, C, D, E, F, O, Y, Z, Contingency, IA	Power Utilities	<ul style="list-style-type: none"> <li>~ Notify all personnel of down electrical lines.</li> <li>~ Refer to the IRPG page 24 for Power Line Safety.</li> <li>~ Always treat downed wires as energized.</li> <li>~ Identify and avoid high tension transmission lines.</li> <li>~ In high winds or areas of dense smoke, avoid areas under power lines.</li> <li>~ Be aware of utility restoration in your work area.</li> </ul>
ALL	Air Operations	<ul style="list-style-type: none"> <li>~ Follow "Aviation Watch-Out Situations" on page 44, IRPG.</li> <li>~ Don't plan on air resources for medical transport or resupply.</li> <li>~ Ensure positive communication with all air resources.</li> <li>~ Ensure communications are established with operators.</li> <li>~ During airtanker operations clear the drop zone before approach of the lead plane.</li> </ul>
All	Structure Protection & HAZMAT	<ul style="list-style-type: none"> <li>~ Review "Wildland Urban Interface" Watch outs, IRPG page 12.</li> <li>~ Use "Structure Assessment" checklist, IRPG pages 13-15.</li> <li>~ Follow "HAZMAT Incident Operations" on pages 34-36 in IRPG.</li> <li>~ Identify and avoid damaged gas service near structures.</li> </ul>
B, C, O	Logging Operations	<ul style="list-style-type: none"> <li>~ Stay clear of active cutting operations.</li> <li>~ If re-burns occur, stop cutting operations before entering the area.</li> <li>~ Use caution when logging equipment is in the area or traveling on the roads.</li> <li>~ Maintain communication with logging operation during operational period.</li> </ul>
ALL & ICPs	Driving & Traffic	<ul style="list-style-type: none"> <li>~ Practice "Defensive Driving" techniques traveling on all roads and city streets.</li> <li>~ Use spotters when backing.</li> <li>~ Honk horn to alert personnel when backing.</li> <li>~ Keep clutter off dash and inside cab.</li> <li>~ Follow Driving LCES (Lights, Chock blocks, Emergency brake, Seat belts).</li> <li>~ Always use headlights.</li> <li>~ Yield to pedestrians and bicycles.</li> <li>~ Observe posted speed limits.</li> <li>~ Use the 3 second rule for following distance when driving.</li> <li>~ Use chock blocks, turn wheels into hill.</li> <li>~ Avoid distractions (eating, cell phones, radio).</li> <li>~ Ensure that windshields are kept clean of dust and bugs.</li> <li>~ Use caution when traveling on roads that are impacted by smoke or dusty conditions.</li> <li>~ When feasible, coordinate travel to and from the hotels to ensure two or more personnel travel together to mitigate long distances.</li> </ul>
ALL	Hazard Trees	<ul style="list-style-type: none"> <li>~ Follow "Hazard Tree Safety" guidelines, IRPG page 22.</li> <li>~ Post lookouts, or use a spotter in mop-up areas with personnel.</li> <li>~ Don't park vehicles or take breaks in high concentrations of hazard trees.</li> <li>~ Establish trigger points for disengagement during high wind events.</li> <li>~ Remember that the hazard zone extends a minimum of 2 1/2 tree heights.</li> <li>~ When working in bay areas, be aware of cypress trees. There are reports of them beginning to fall, due to burned out root systems.</li> </ul>

ALL	Fireline Hazards	<ul style="list-style-type: none"> <li>~ Establish and continue to validate LCES.</li> <li>~ Avoid radiant heat by wearing appropriate PPE correctly.</li> <li>~ Use correct tool for task assigned.</li> <li>~ Follow power line safety protocol as outlined on page 22 in IRPG.</li> <li>~ Flag and isolate all HAZMAT and alert all personnel working in Division.</li> <li>~ Follow WUI recommendations on pages 10-11 in IRPG.</li> </ul>
ALL	Injury & Medical Emergency	<ul style="list-style-type: none"> <li>~ Assist injured employee and provide appropriate medical care.</li> <li>~ Use EMT's on Division for initial care.</li> <li>~ Follow medical protocol as outlined in ICS-206 &amp; IRPG Pgs 99-108</li> </ul>
ALL	Firing Operations & Devices	<ul style="list-style-type: none"> <li>~ Only personnel trained in the use of each device will be authorized to use firing equipment.</li> <li>~ Ensure all personnel are aware of firing operation that may affect them.</li> <li>~ Wear appropriate PPE.</li> <li>~ Ensure aerial/ground ignition plans have been adequately developed and personnel are briefed.</li> </ul>
ALL	Communications	<ul style="list-style-type: none"> <li>~ Maintain communication with aviation resources, and suppression organization.</li> <li>~ Ensure all know frequency and protocol for contacting resources.</li> <li>~ Use clear terminology, ask questions and ensure good understanding, especially with new resources.</li> <li>~ Utilize the ICS 205.</li> <li>~ Utilize human repeaters when working in dead spots.</li> <li>~ Know who you will contact in case of an emergency and practice the IWI protocol and 9 Line</li> <li>~ Use magnetic antenna mounts on vehicles</li> </ul>
ALL	Heavy Equipment Operations	<ul style="list-style-type: none"> <li>~ Ensure communications are established with operators.</li> <li>~ Use hand signals if other communications are unavailable.</li> <li>~ Maintain a 50'-100' exclusion area around equipment and increase it to 1 1/2 times tree height when in timber.</li> <li>~ Use a spotter when backing.</li> </ul>
ALL	Night Operations	<ul style="list-style-type: none"> <li>~ Maintain high visibility in work area and wear vest while in roadway.</li> <li>~ Use glow sticks to mark hazards.</li> <li>~ Ensure personnel have a personal light (headlamp) and red strobe to ensure visibility.</li> <li>~ Watch for signs of fatigue.</li> <li>~ Take breaks away from areas of known hazard.</li> </ul>
ALL	Indirect Fire line	<ul style="list-style-type: none"> <li>~ Post lookouts, identify escape routes and safety zones (IRPG pg. 6).</li> <li>~ Review "Strategy/Indirect Attack" (IRPG pg. 77).</li> </ul>
ALL	Wildlife	<ul style="list-style-type: none"> <li>~ Watch out for wildlife inside fire area and along roadways including bears, alligators, snakes, hogs, and deer.</li> <li>~ Clean up all debris and trash during each operational period.</li> <li>~ Don't feed or harass the animals.</li> </ul>
ALL	Severe Weather	<ul style="list-style-type: none"> <li>~ Review and follow Thunderstorm Safety guidelines in IRPG page 21.</li> <li>~ Observe 30/30 Rule for lightning safety.....page 21, IRPG.</li> <li>~ Establish "Trigger Points" to withdraw, and ensure all know rally site.</li> <li>~ Use "Risk Management" process to determine retreat criteria and actions.</li> <li>~ Carry rain gear and extra food and water if weather limits retreat to ICP. Adhere to direction found in Tornado Safety and Evacuation Plan</li> </ul>
ALL	ATV/UTV use	<ul style="list-style-type: none"> <li>~ Ensure equipment is inspected and safe to use</li> <li>~ Restrict UTV's to max width of 50" on ATV trails due to width and severe outsloped conditions.</li> <li>~ Ensure operator is trained and certified to operate.</li> <li>~ Ensure operator has proper PPE according to the Red Book and/or RMA.</li> <li>~ At a minimum a hardhat should be worn at all times. If your agency requires more advanced helmets and protection, follow your agency policy.</li> </ul>
ALL	Bees, Ticks, Mosquitoes, Spiders, Chiggers	<ul style="list-style-type: none"> <li>~ Canvas crew members for those with known allergic reactions to stings.</li> <li>~ Ensure crew members have medication pens if needed.</li> <li>~ Perform daily self inspection.</li> <li>~ Use repellent as necessary.</li> <li>~ Advanced Life Support, multi-dose epi and airway protection</li> <li>~ Keep affected area clean and bandaged.</li> <li>~ Be extra careful wen eating and/or drinking to avoid stings to mouth and throat.</li> </ul>

# MEDICAL PLAN (ICS 206 WF)

<b>Incident/Project Name</b>		<b>1. Operational Period</b>					
West Mims Fire		Date/Time <b>5/13/2017 0730hrs to 0730 hrs</b>					
<b>2. Ambulance Services</b>							
<b>Name</b>	<b>Complete Address</b>	<b>Phone</b>		<b>Advanced Life Support (ALS)</b>			
Clinch County EMS	1050 Valdosta Highway Homerville GA	911		YES			
Charelston County EMS	321 Georgia Ave. St. George, GA	911		YES			
<b>3. Air Ambulance Services</b>							
<b>Name</b>	<b>Phone</b>	<b>Type of Aircraft &amp; Capability</b>					
Air Methods	888-763-1010	AS 350 With night vision capabilities					
Air Evac	888-269-6006	206 L1+ With Night Vision capability					
Trauma 1	800-223-4878	Bell 407 & EC153 both with night vision capability					
<b>4. Hospitals</b>							
	<b>DD° MM.MMM' N - Lat DD° MM.MMM' W - Long</b>	<b>Travel Time Air Gnd</b>		<b>Phone</b>	<b>Helipad Yes No</b>	<b>Level of Care Facility</b>	
Satilla Regional 410 Darling Ave. Waycross GA 31501	Lat: N 31° 13.452	15 mins	45 mins	912-283-3030	<input checked="" type="checkbox"/>	<input type="checkbox"/>	Level III
	Long: W 82° 20.875						
	VHF:						
Clinch Memorial 1050 Valdosta Hwy Homerville GA 31634	Lat: N 31° 01.975	20 mins	30 mins	912-487-5211	<input checked="" type="checkbox"/>	<input type="checkbox"/>	Level IV
	Long: W 82° 45.850						
	VHF:						
Ed Frazier Hospital 159 N. 3 <sup>rd</sup> St. MacClenny FL 32063	Lat: N 30° 28.482	15 mins	45 mins	904-259-3151	<input checked="" type="checkbox"/>	<input type="checkbox"/>	Level IV
	Long: W 82° 11.896						
	VHF:						
Shands Jacksonville 655 West 8 <sup>th</sup> Str Jacksonville FL 32209	Lat: N 30° 20.890	45 mins	90 mins	904-383-1015	<input checked="" type="checkbox"/>	<input type="checkbox"/>	Level I Burn Center Level I Trauma Center
	Long: W 81° 39.862						
	VHF:						
<b>5. Division   Branch   Group   Area Location Capability</b>							
Division A		Paul Pugh EMPF		(602)376-9812			
Division B		Martin Carillo EMPF		(619)933-5546			
Division C,D		Gary Allen Ford EMPF		(470)532-8807			
Division M,N		Linda Kramer EMPF		(616)403-1873			
Division O		Dean Carpenter EMPF with UTV		(229)561-4224			
Division Z		Stan Bangs EMPF		(602)980-6108			
Night Division B/C		Kathy Nemmers EMPF		(602)885-3115			
Night Division D		Alyse Guitierrez		(602)505-9082			
Night Division A		Michael Koepke EMPF		(928)249-0541			
Night Division Z		Kyle Port EMPF		(602)410-6788			
Branch 1 Amb./ 24 hr.		Clinch Co. EMS		( 470)-532-8806			
Branch 3 Amb./24hr.		Golden Isles		(912)602-9224			

**IWI IC Responsibilities:**

- Take charge of the scene – inform the Division Supervisor and Communications that you are the IWI IC and establish radio communications (frequencies, channels). Identify the emergency name – Division A medical, Fish Meadows medical, Highway 21 accident.
- Assign or begin patient assessment (9 Line) and first aid. Request additional medical resources on division/branch or across incident. Transmit 9 Line patient information to Communications.
- Determine patient transportation through consultation with line medical personnel and Medical Unit Leader. Consider transportation time, risk to personnel, destination facility and available operational resources. If air transport is chosen, implement the plan for alternative transportation in the event aircraft cannot complete the mission. Order transportation resources through Communications as early as possible.
- Notify Communications as resources arrive and any patient status changes. Names of injured or deceased individuals will not be transmitted on the radio.
- Initiate documentation for future investigation; if a line safety officer is available, assign them to lead documentation. Do not move deceased individuals, gear or personal effects except to accomplish rescue work or protect the safety of others. Obtain written documentation of witnesses. The Unit Log, ICS 214, may be used for the initial documentation, but a subsequent narrative will be required.
- As appropriate, conduct an After Action Review to determine successes, areas to improve and lessons learned.

<b>6. Prepared By (Medical Unit Leader)</b>	<b>7. Date/Time</b>	<b>8. Reviewed By (Safety Officer)</b>	<b>9. Date/Time</b>
Fred Adler MEDL/ Matt Laricos MEDL(T)	5/12/2017	Tony Rivers SOF1	5/12/2017

## **Don't feed the alligators!!**

There are many interesting characters in the Okefenokee NWR, other than firefighters. One that you are likely to see, famous for swamp living, is the alligator. On the brink of extinction in the 1960s, the gator is now flourishing.

Alligators are often seen basking on sunny banks or roadsides in cool weather, and are plentiful in the swamp and Suwannee Canal year-round. Mama gators are the only reptiles that care for both the eggs and the young; the orange-and-black striped babies can often be seen riding on mama's back or head! Gators "bellow" in spring and summer, a deep growl that establishes territory or attracts a mate.

Now that it is mating season for alligators, be careful if you are near water, as the reptiles may be feistier than other times of the year. Additionally, they will be more concentrated in low water, which is the current refuge condition. Remember, alligators are often fully or partially submerged and not always easy to see.



**Fire Information – Phone: 904-452-4627**

**Text your photos/videos to 252-216-8667 or email: [okefirepio@gmail.com](mailto:okefirepio@gmail.com)**

Follow Us on Facebook: @Okefenokee National Wildlife Refuge #westmimsfire #okefenokee

Inciweb: <https://inciweb.nwccg.gov/incident/5153/>



## Finance Notes

For **ALL** resources:

- Please turn in CTRs and/or shift tickets **daily**.
- Record all of the meal breaks taken during your operational period, with a minimum of one during each shift. If no meal break is recorded, justification must be included in remarks.
- **Document the reason for Hazard Pay or other differential** (i.e., Environmental Pay) in remarks. The most common reasons for Hazard Pay are:
  - Helicopter ground operations under hovering helicopter (attaching slingloads)
  - Uncontrolled fireline duty (line construction, patrol, mop up, felling, etc).  
*This **does not** include personnel engaged in logistical support, service, and non-suppression activities, e.g., media tours to the fireline, incident personnel driving to the fire to observe activities, drivers delivering tools or personnel.*
  - Limited control flights
- **Document and mitigate excessive shifts:** If you must work more than 16 hours in an operational period, record why in remarks. In succeeding shifts, show that you mitigated the fatigue by taking off one hour for each two that you worked over 16.
- **Include your request number** (i.e., E-1, O-1, C-1) on CTRs and shift tickets. For shift tickets, put the number in the upper right hand corner.

The following resources need to **see or call into Finance**:

E-224: Michael Stokes

E-262: Wildland Fire Service

E-340: Tipton & Young

Andrew Carr, Oklahoma Forestry Services

If you would like your **time faxed or e-mailed to your home unit** at the end of the pay period, please add the necessary information to your CTR.

## DEMOB LIST

05/13/2017

### EQUIPMENT

E-349	(PU)	WILCOX 31, MICHAEL
E-341	(PU)	DOUGLAS, RONNIE

### OVERHEAD

O-190	(PU)	ENYEDI, ANGELA BROYLES
O-197	(TFLD)	JOHNSON, ERIK M
O-229	(SEC2)	STILES, DAN
O-245	(RCDM)	HAWKINS, JOHN
O-257	(STEQ)	BLOODWORTH, MICHAEL

05/14/2017

### EQUIPMENT

E-95.3	(TROP)	BEASLEY, BRANDON
--------	--------	------------------

### OVERHEAD

O-22	(INBA)	WATERS, RODGER D
O-174	(EMPF)	KRAMER, LINDA
O-244	(SOF2)	BUNTON, MICKEY
O-247	(SEC1)	BROWN, PEGGY D
O-251	(STEQ)	LUMPKIN, RT
O-250	(STEQ)	CALLOWAY, LONNIE
O-254	(EQPM)	SMITH, ROBERT
O-255	(TFLD)	HELMS, TROY
O-281.49	(LSC2)	BARRETT, RICHARD

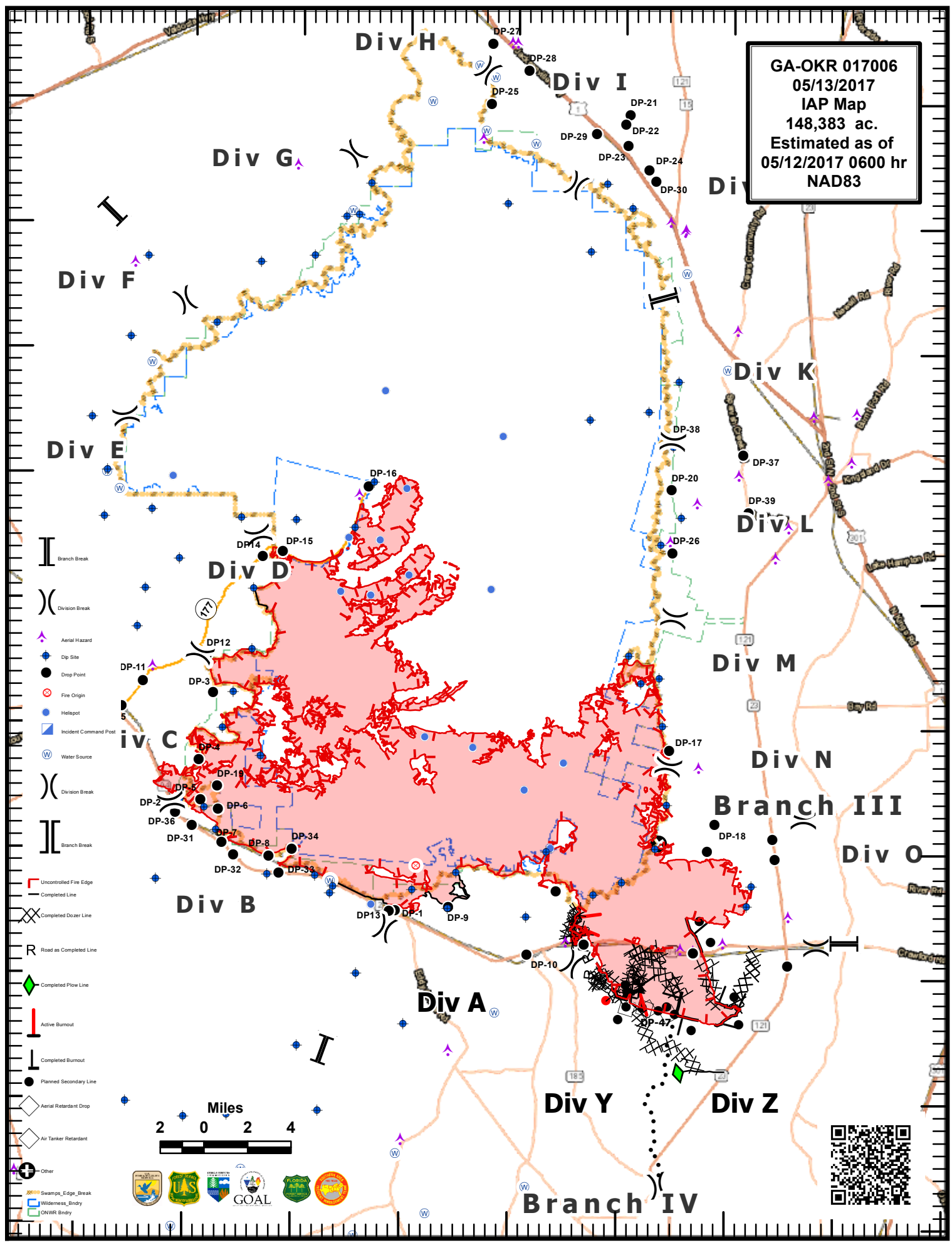
IF YOU ARE TO FLY HOME PLEASE CONTACT DEMOB AT LEAST 3 DAYS BEFORE FLIGHT TIME.  
PHONE # 1-912-637-5113    EMAIL [demobwestmimsfire@gmail.com](mailto:demobwestmimsfire@gmail.com)

82°35'W 82°30'W 82°25'W 82°20'W 82°15'W 82°10'W 82°5'W 82°0'W

31°5'N 31°0'N 30°55'N 30°50'N 30°45'N 30°40'N 30°35'N 30°30'N 30°25'N 30°20'N

31°5'N 31°0'N 30°55'N 30°50'N 30°45'N 30°40'N 30°35'N 30°30'N 30°25'N 30°20'N

GA-OKR 017006  
05/13/2017  
IAP Map  
148,383 ac.  
Estimated as of  
05/12/2017 0600 hr  
NAD83



82°35'W 82°30'W 82°25'W 82°20'W 82°15'W 82°10'W 82°5'W 82°0'W 81°55'W





# MEDICAL PLAN (ICS 206 WF)

## Medical Incident Report

**FOR ALL MEDICAL EMERGENCIES: IDENTIFY ON SCENE INCIDENT COMMANDER BY NAME AND POSITION AND ANNOUNCE "MEDICAL EMERGENCY" TO INITIATE RESPONSE FROM IMT COMMUNICATIONS/DISPATCH.**

**Use items one through nine to communicate situation to communications/dispatch.**

### 1. CONTACT COMMUNICATIONS/DISPATCH

*Ex: "Communications, Div. Alpha. Stand-by for Priority Medical Incident Report." (If life threatening request designated frequency be cleared for emergency traffic.)*

### 2. INCIDENT STATUS: Provide incident summary and command structure.

<b>Nature of Injury/Illness</b>		<i>Describe the injury (Ex: Broken leg with bleeding)</i>
Incident Name		<i>Geographic Name + "Medical" (Ex: Trout Meadow Medical)</i>
Incident Commander		<i>Name of IC</i>
Patient Care		<i>Name of Care Provider (Ex: EMT Smith)</i>

### 3. INITIAL PATIENT ASSESSMENT: Complete this section for each patient. This is only a brief, initial assessment. Provide additional patient info after completing this 9 Line Report.

Number of Patients:	Male / Female	Age:	Weight:
Conscious? <input type="checkbox"/> YES <input type="checkbox"/> <b>NO = MEDEVAC!</b>			
Breathing? <input type="checkbox"/> YES <input type="checkbox"/> <b>NO = MEDEVAC!</b>			
Mechanism of Injury: <i>What caused the injury?</i>			
Lat/Long (Datum WGS84) <i>Ex: N 40° 42.45' x W 123° 03.24'</i>			

### 4. SEVERITY OF EMERGENCY, TRANSPORT PRIORITY

SEVERITY	TRANSPORT PRIORITY
<input type="checkbox"/> <b>URGENT-RED Life threatening injury or illness.</b> <i>Ex: Unconscious, difficulty breathing, bleeding severely, 2° – 3° burns more than 4 palm sizes, heat stroke, disoriented.</i>	Ambulance or MEDEVAC helicopter. Evacuation need is <b>IMMEDIATE.</b>
<input type="checkbox"/> <b>PRIORITY-YELLOW Serious Injury or illness.</b> <i>Ex: Significant trauma, not able to walk, 2° – 3° burns not more than 1-2 palm sizes.</i>	Ambulance or consider air transport if at remote location. Evacuation may be <b>DELAYED.</b>
<input type="checkbox"/> <b>ROUTINE-GREEN</b> Not a life threatening injury or illness. <i>Ex: Sprains, strains, minor heat-related illness.</i>	Non-Emergency. Evacuation considered <b>Routine of Convenience.</b>

### 5. TRANSPORT PLAN:

<b>Air Transport:</b> (Agency Aircraft Preferred)			
<input type="checkbox"/> Helispot	<input type="checkbox"/> Short-haul/Hoist	<input type="checkbox"/> Life Flight	<input type="checkbox"/> Other
<b>Ground Transport:</b>			
<input type="checkbox"/> Self-Extract	<input type="checkbox"/> Carry-Out	<input type="checkbox"/> Ambulance	<input type="checkbox"/> Other

### 6. ADDITIONAL RESOURCE/EQUIPMENT NEEDS:

<input type="checkbox"/> Paramedic/EMT(s)	<input type="checkbox"/> Crew(s)	<input type="checkbox"/> SKED/Backboard/C-Collar
<input type="checkbox"/> Burn Sheet(s)	<input type="checkbox"/> Oxygen	<input type="checkbox"/> Trauma Bag
<input type="checkbox"/> Medication(s)	<input type="checkbox"/> IV/Fluid(s)	<input type="checkbox"/> Cardiac Monitor/AED
<input type="checkbox"/> Other (i.e. splints, rope rescue, wheeled litter)		

### 7. COMMUNICATIONS:

Function	Channel Name/Number	Receive (Rx)	Tone/NAC *	Transmit (Tx)	Tone/NAC *
<i>Ex: Command</i>	<i>Forest Rpt, Ch. 2</i>	<i>168.3250</i>	<i>110.9</i>	<i>171.4325</i>	<i>110.9</i>
COMMAND					
AIR-TO-GRND					
TACTICAL					

\*(NAC for digital radio system)

### 8. EVACUATION LOCATION:

Lat/Long (Datum WGS84) <i>EX: N 40 42.45' x W 123 03.24'</i>	
Patient's ETA to Evacuation Location:	
Helispot/Extraction Size and Hazards:	

### 9. CONTINGENCY:

<b>Considerations:</b> <i>If primary options fail, what actions can be implemented in conjunction with primary evacuation method? Be thinking ahead...</i>	<b>REMEMBER:</b> <b>Confirm ETA's of resources ordered</b> <b>Act according to your level of training</b> <b>Be Alert. Keep Calm. Think Clearly. Act Decisively.</b>
--	--