

# West Mims Fire

## Schedule

0730 Morning Briefing  
1200 C & G  
1500 Pre Planning Meeting  
1700 Planning Meeting  
1800 Night Briefing @ Bethea

## INCIDENT ACTION PLAN

**Operational Periods**  
**May 10, 2017 to May 11, 2017**  
**0730 – 1930/1930 – 0730**

QR for IAP



GA-OKR-017006  
FWS FFF2000000KYJ70  
USFS PRKYJ717\_1502 (P)  
NPS PFFSKJ7017.00.1

QR for Maps



## INCIDENT OBJECTIVES (ICS 202)

<b>1. Incident Name:</b>	<b>2. Operational Period: DAY SHIFT 0830-2030</b>	
WEST MIMS	Date/Time From: 05/10/2017 0830      WED	Date/Time To: 05/10/2017 2030      WED
<b>3. Objective(s):</b>		
<ul style="list-style-type: none"> <li>• Provide for the safety and security of incident personnel and public in all incident operations through sound risk assessment and hazard mitigations.</li> <li>• Maintain a positive working relationship with all adjacent landowners, cooperators State and Federal partners. Inform, involve and communicate incident planning and operations with all partners.</li> <li>• Confine all fires that are within the Okefenokee National Wildlife Refuge, inside the Refuge and/or inside the swamp edge break if possible. Aggressively suppress all fire outside the swamp edge boundary.</li> <li>• In cooperation with local timberland owners, use full suppression strategies and tactics to minimize damage to private timberlands and improvements and to prevent fires outside the Refuge from entering the Refuge.</li> <li>• Assist in management and suppression of additional fires (new starts or breakouts) in the vicinity as approved by Agency Administrators and Unified Incident Commanders.</li> <li>• Protect all cultural and archeological sites and structures within the refuge.</li> <li>• Manage the fires cost-effectively consistent with the values at risk.</li> <li>• Implement structure protection as necessary for at-risk facilities and communities.</li> <li>• Coordinate suppression actions with assigned Refuge Resource Advisors to protect endangered species.</li> <li>• Conduct all operations in a harassment-free environment. There will be a no tolerance atmosphere for harassment, alcohol, or illegal drug use. Everyone will be treated with dignity and respect.</li> </ul>		
<b>4. Operational Period Command Emphasis:</b>		
Branch IV Keep fire East of the North Prong of St Mary's river; West of Nassau county Florida; and North of Baker county Florida Branch III Keep fire North of Hwy 94, West of St Mary's River, and South of #19 road Keep fire within the Okefenokee Refuge Swamp Edge Break Boundary. Respond to initial attack fires on new starts within: *South of Suwannee Canal *Within the Okefenokee jurisdictional boundaries *Within state properties inside Perimeter Road		
<b>General Situational Awareness:</b>		
Utilize confine, contain, and point source protection strategies and tactics that commit operations personnel only where and when they can be successful, under conditions where important values at risk are protected with the least exposure.		
<b>5. Site Safety Plan Required?</b> Yes <input type="checkbox"/> No <input checked="" type="checkbox"/>		
<b>Approved Site Safety Plan(s) Located at:</b>		
<b>6. Incident Action Plan</b> (the items checked below are included in this Incident Action Plan):		
<input checked="" type="checkbox"/> ICS 202 <input checked="" type="checkbox"/> ICS 203 <input checked="" type="checkbox"/> ICS 204 <input checked="" type="checkbox"/> ICS 205 <input type="checkbox"/> ICS 205A <input checked="" type="checkbox"/> ICS 206	<input type="checkbox"/> ICS 207 <input checked="" type="checkbox"/> ICS 208 <input checked="" type="checkbox"/> ICS 220 <input checked="" type="checkbox"/> Map/Chart <input checked="" type="checkbox"/> Weather Forecast/Tides/Currents	Other Attachments: <input checked="" type="checkbox"/> PIO MESSAGE <input checked="" type="checkbox"/> FINANCE MESSAGE <input checked="" type="checkbox"/> TENTATIVE DEMOB <input checked="" type="checkbox"/> MAP
<b>7. Prepared by:</b> BRIAN ELDREDGE      Position/Title:      PSC1	Signature:	
<b>8. Approved by Incident Commander:</b>	Name:      MIKE DUEITT	Signature:
<b>ICS 202</b>	<b>IAP Page</b>	Date/Time:      05/09/2017 2000

## ORGANIZATION ASSIGNMENT LIST (ICS 203)

<b>1. Incident Name:</b> WEST MIMS		<b>2. Operational Period:</b> DAY SHIFT 0830-2030	
		Date/Time From: 05/10/2017 0830	Date/Time To: 05/10/2017 2030
		WED	WED
<b>3. Incident Commander(s) and Command Staff:</b>		<b>6. Logistics Section:</b>	
IC/UC	MICHAEL DUEITT; BUCK KLINE; RICK DOLAN MIKE GOICOECHEA (T)	CHIEF	JOHNNY SMITH; RICK BARRETT (T)
SAFETY OFFICER	BRAD LIDELL; MICHAEL COOK; TONY RIVERS (T); CHARLIE PATTERSON (T)	LOGS CHIEF EAST	MICHAEL BURCHARD
INFORMATION OFFICER	CATHERINE HIBBARD; BONNIE STRAWSER; MICHAEL DAVIS (T)	SERVICE BRANCH DIRECTOR	JOE WALKER
LIAISON OFFICER	JD LEE KEITH LAWRENCE	SUPPLY UNIT	MARK MORGAN
THSP	ROAD MAINTENANCE MIKE JOHNSON	FACILITIES UNIT	ISH ENNIS
<b>4. Agency/Organization Representative(s):</b>		GROUND SUPPORT UNIT	PATRICK WRIGHT; CHARLES WEATHERS
<b>Agency/Organization</b>	<b>Name</b>	COMMUNICATIONS UNIT	JERRY PATRICK; BARRY STEARNS (T)
GFC PROTECTION	FRANK SORRELLS	MEDICAL UNIT	FRED ALDER
OKE REF MGR/ASSIST	MICHAEL LUSK; SARA CLARDY	COMT	RAY ADAMS; ROY FORTENBERRY
OKE REF FMO	REESE KERBOW	FOOD UNIT	ANDREW BOGGS
GOAL	JIM BARRETT	ORDM	NINA GAINEY; LISA MEEKINS (T)
FLDOF	JOHN RAULERSON	RCDM	JOHN HAWKINS; JIM GACEY; MARC PRATT (T)
GEMA	DIANE ADAMS	EQPM	KIRBY HENNINSEN; JASON MCHAN
NORFOLK SOUTHERN	CHAD EDWARDS	RADO	
CLINCH CO EMA	WILL JOYCE; RANDY PATTEN	<b>7. Operations Section:</b>	
GADOT	TREVOR BROWN	OPS SECTION CHIEF	VICKI EDGE; LARRY SMITH (T)
CHARLTON CO EMA	BRUCE YOUNG	FIELD OPS	JAMES DURRWACHTER; SHANNON BOWMAN (T)
<b>5. Planning Section:</b>		PLANNING OPS	STEVE WEAVER; JEREMY BRAND (T)
CHIEF	BRIAN ELDREDGE	NIGHT OPS SECTION CHIEF (BRANCH I)	JAMES SCHWARTZ
PSC2	JIM LINARDOS	NIGHT OPS SECTION CHIEF (BRANCH III)	PETE MYERS
RESOURCES UNIT	MISSY FORDER; DONNA THOMAS	<b>Branch</b>	<b>I</b>
STATUS CHECKIN	CARLA ROBERTS; SUE SOBIESKI; SHANEEN MOORE (T); BRANDEN TOLVER (T)	BRANCH DIRECTOR	DARRELL MILLER;
SITUATION UNIT	TERRY BOWERMAN KEVIN HIERS (T)	DIVISION/GROUP	DIV B TIM STILTNER; DAVID QUESINBERRY (T)
DEMOBILIZATION UNIT	KAREN DAVIS	DIVISION/GROUP	DIV C BERT PLANTE; ROBERT CLAYTOR (T)
DOCUMENTATION UNIT	GORDON MARTIN	DIVISION/GROUP	DIV D JOEL BURGETT
ITSS	TONY FARMER TERRANCE CHAPLIN (T)	DIVISION/GROUP	FL FFS CONTINGENCY GLEN DAVIS; JOHN RAULERSON
TRAINING SPECIALIST	SEAN WOLF; GREG SEAMON	DIVISION/GROUP	DIV NIGHT PAUL MANCUSO RUSSELL COPP
GIS SPECIALIST	ANDREW THOMPSON, DAVID JONES JORDAN HERRIN (T)	<b>Branch</b>	<b>II</b>
INCIDENT METEOROLOGIST	ANGELA ENYEDI	<b>Branch</b>	<b>III</b>
FIRE BEHAVIOR ANALYST; AIR RESOURCE ADVISOR	GARY JARVIS; MATT FILBERT (T) T. WICKMAN; THSP-ARA	BRANCH DIRECTOR	RON SMITH
		BRANCH DIRECTOR NIGHT	ROBERT TRINCADO
		DIVISION/GROUP	M/N JOHN A JOHANSON; BRIAN BROWNING
<b>9. Prepared By:</b>	<b>Name:</b> MISSY FORDER	<b>Position/Title:</b> RESL	<b>Signature:</b>
ICS 203	IAP Page	<b>Date/Time:</b> 05/09/2017 1730	

## ORGANIZATION ASSIGNMENT LIST (ICS 203)

<b>1. Incident Name:</b>		<b>2. Operational Period:</b> DAY SHIFT 0830-2030	
WEST MIMS		Date/Time From: 05/10/2017 0830 WED	Date/Time To: 05/10/2017 2030 WED
DIVISION/GROUP		JASON LAGO	
DIVISION/GROUP	O	ROBERT THORP	
DIVISION/GROUP	IA	DONNIE HARRIS	
DIVISION/GROUP	DIV NIGHT	SHANE STURGILL MICHAEL CACHERO	
<b>Branch</b>	<b>I &amp; III</b>		
THSP - ROAD MAINTENANCE	MIKE JOHNSON		
<b>Branch</b>	<b>IV</b>		
BRANCH DIRECTOR	STEVE MILLER		
DIVISION/GROUP	A	RON ROURKS	
DIVISION/GROUP	Z	TRENT INGRAM	
DIVISION/GROUP	DAY STRUCTURE PROTECTION	CRAIG ROBERTSON	
DIVISION/GROUP	CONTINGENCY	BLAIR JOINER	
DIVISION/GROUP	NIGHT A	JOHN MOLVE	
DIVISION/GROUP	NIGHT Z	BRYCE SCOTT THOMAS	
DIVISION/GROUP	NIGHT STRUCTURE PROTECTION	HAROLD L KIBBE JOHN ALLBRIGHT (T)	
<b>7b. Air Operations Branch:</b>			
AIR OPS BRANCH DIRECTOR	TIMOTHY FAUST		
AIR SUPPORT GROUP SUPERVISOR	JOHN MASON		
AIR ATTACK SUPERVISOR	MARK NUNEZ; CHRIS WORREL; MIKE BOT (T) DEREK WHEELER (T)		
HEB1 POGO	MARC RUDKIN		
<b>8. Finance/Administration Section:</b>			
CHIEF	BONNY JOHNSON		
PROCUREMENT UNIT	JAMES MEREDITH; THERESA HOOD		
CONTRACTING OFFICER	THERESA HOOD		
COST UNIT	CAROLYN DETWILER; JENNY CROSS (T)		
TIME UNIT	JEAN FRICK		
COMPENSATION UNIT	VERMA COLEMAN STACEY EATON (T)		
LOCAL FINANCE LIAISON	REGGIE LANIER		
<b>9. Prepared By:</b>	<b>Name:</b> MISSY FORDER	<b>Position/Title:</b> RESL	<b>Signature:</b>
ICS 203	IAP Page	<b>Date/Time:</b> 05/09/2017 1730	



**To: All Incident Personnel, West Mims Fire 2017**

As the Unified Command Incident Commanders, we have a policy of “zero tolerance” of inappropriate behavior during incident operations. Any form of harassment, discriminatory practices, or disrespectful behavior will not be tolerated. Known or reported acts will be dealt with appropriately.

We are particularly concerned about the perception that alcohol has a place in any of the Incident facilities. It is not appropriate to indulge in alcoholic beverages during any fire assignment.

The National Team from the Southern Region has a policy of “NO ALCOHOL” from the time of dispatch until the time of physical release from the Incident. Members of the Team voluntarily comply with this policy; all incident personnel will be expected to do so also.

We endorse, support, and expect an attitude of mutual respect for all Incident personnel and the public we serve. We also, endorse the attitude and work ethic that places “Safety First, every time on every Incident.” We expect nothing less.

/s/ Mike Dueitt
/s/ Rick Dolan
/s/ Trent Ingram
Incident Commanders



# Fire Weather Forecast



**FORECAST NO: 26**  
**PREDICTION FOR: Wednesday Shifts**  
**SHIFT DATE: May 10, 2017**  
**FORECAST ISSUED: 1800 May 9, 2017**

**NAME OF FIRE: West Mims Fire**  
**UNIT: Okefenokee National Wildlife Refuge**  
**Incident Meteorologist: Angie Enyedi**  
**904-318-4041**

**DISCUSSION:** High pressure will settle farther south of the fire zone which will bring a prevailing light westerly flow through the early afternoon with speeds generally 5-8 mph with gusts up to 15 mph. This pattern will continue very hot and dry conditions, with daytime high temperatures rising to near record values in the mid 90s and minimum humidity near 20%. The west coast sea breeze will push across the fire zone in the late afternoon then collide with the east coast sea breeze across the eastern tier of the fire area during the early evening which will cause varied wind directions.

### TODAY (WEDNESDAY DAY SHIFT):

- WEATHER: Near record high temperatures. Mostly sunny and very dry.
  - WIND (20 FT): W 5-10 mph, gusts to 15 mph by midday. Sea breeze will vary wind direction late afternoon and early evening.
  - MAX TEMPERATURES: 93-97
  - LAL: 1
  - MIXING HEIGHT: 7300
- CHANCE RAIN: 0%  
 MIN RH: 18-23%  
 DISPERSION (MAX): 75  
 TRANSPORT WINDS: W 10-15 mph

### HOURLY WEATHER FORECAST (LST)

Time	1000	1200	1400	1600	1800	2000
Temp °F	81	85	92	95	90	83
RH %	37	25	20	18	21	32
Wind Dir	WNW	WNW	W	WSW	WSW	VRB
Wind Spd mph	5	7	8	8	7	7
Wind Gst mph	10	13	15	15	12	10

VRB = Variable (shifting wind directions)

### TONIGHT (WEDNESDAY NIGHT SHIFT):

- WEATHER: Clear and warmer with light winds.
  - WIND (20 FT): Light and variable in evening. Becoming WSW after midnight ≤ 3 mph.
  - MIN TEMPERATURES: 55-60
  - LAL: 1
- MAX RH: 90-100%  
 MAX LVORI: 8  
 CHANCE OF RAIN: 0%

### HOURLY WEATHER FORECAST (LST)

Time	2200	2400	0200	0400	0600	0800
Temp °F	74	69	66	61	58	64
RH %	60	72	80	85	95	88
Wind Dir	VRB	VRB	W	W	W	WNW
Wind Spd mph	6	5	< 3	< 3	< 3	< 3

### THURSDAY:

- WEATHER: Hot with near record high temperatures. Mostly sunny and continued dry.
  - WIND (20 FT): WNW 5-10 mph, gusts to 15-20 mph by midday.
  - MAX TEMPERATURES: 91-96
  - LAL: 1
  - MIXING HEIGHT: 7500
- MIN RH: 20-25%  
 DISPERSION (MAX): 77  
 TRANSPORT WINDS: W 15-20 mph

**Sunrise Wednesday: 6:39 am**

**Sunset Wednesday: 8:14 pm**

**Sunrise Thursday: 6:38 am**

### RAWS Observations:



### FIRE BEHAVIOR FORECAST

<b>FORECAST NUMBER: #21</b>	<b>TYPE OF FIRE: Wildland</b>
<b>FIRE NAME: West Mims</b>	<b>OPERATIONAL PERIOD: 05/10/2017</b>
<b>DATE ISSUED: 05/09/2017</b>	<b>TIME ISSUED: 1800</b>
<b>UNIT: Okfeenokee National Wildlife Refuge</b>	<b>Written: Kelly Cagle FBAN (t) Signed: Gary Jarvis FBAN</b>

**FUEL ASSUMPTIONS:** Timber with shrub understory (pine plantation) will be the most active fuel type. Re-burn potential is very high. Current fuel conditions are favorable for very active fire behavior within all fuel types. Expect all fuels to burn readily, including those that appear green. Once fire becomes established, expect it to continue to run until it runs out of fuel.

**The fuel moisture for today is:**

Calculated 1 hr fuel 2%,      10 hr fuel 6%,      100 hr fuel 14%

**ERC levels have been trending at or above 97 Percentile      KBDI – 721**

**Critical fire behavior thresholds:** 1 HR Fuel Moisture <6%, RHs below 40% and a Dispersion Index greater than 60.

**WEATHER:** Near record high temps. Mostly sunny and very dry. West winds at 5-10 mph with gusts to 15 by midday. Sea breeze will vary wind direction during late afternoon and early evening.

Max temp : 91 – 97      Min RH 18-23%      LAL 1      Chance Rain 0%

Dispersion 75      Mixing Height: 7200      Transport Winds: West 10-15 mph

**General Fire Behavior Forecast: Extreme burning conditions! Expect rapid development and intense fire behavior in any areas of available fuel. Long range spotting and high rates of spread will occur once fire is established in areas of pine plantation with shrub understory. Control lines will be tested. Unburned or dirty burn pockets along bends in control lines are high potential for escape. Potential exists for plume dominated fire and associated column collapse. This fire has produced flame lengths in excess of 100 feet and spotting distances of 1 mile.**

**SPECIFICS:** With westerly winds, re-burn will be pushed towards containment lines in Divisions M N O.

**Fire will remain very active in Divisions A Z**

**Other divisions – smoldering, creeping, and re-burn. Reb-burn potential is very high.**

**PREDICTIONS FOR MOST ACTIVE TIME OF PEAK BURNING PERIOD USING WEATHER FROM INCIDENT IMET**

Fuel Model	Fire Behavior
SH 3 (shrub in the swamp)	ROS 10 to 15 ch/hr (.1 mph) FL 4 to 8 feet average
7 (Timber w/shrub palmetto)	ROS 40 to 70 ch/hr, (.5 to .9 mph) FL 8-12 feet average
8 Timber Litter (Pine needles in re-burn areas)	ROS 2 to 4 ch/hr (<.1 mph), FL 1-2 ft. (higher Flame lengths should be expected where shrub component remains)
Spotting	Spotting of a quarter to half mile should be expected. Spotting of 1 mile has occurred during afternoon runs.
Probability of Ignition	100%

**AIR OPERATIONS:** There is a possibility of low level inversion that may produce lingering smoke impacts. This could affect aviation operations early, but should clear out by mid morning.

**FIRE BEHAVIOR SAFETY:** Escape routes and safety zones are critical with fuel conditions and fire behavior that is present on this fire.

## Division/Group Assignment List (ICS 204 WF)

<b>1. Incident Name:</b>			<b>3.</b>			
WEST MIMS			<b>Branch:</b>		<b>Division/Group:</b>	
<b>2. Operational Period:</b> DAY SHIFT 0830-2030			<b>I</b>		<b>B</b>	
Date/Time From: 05/10/2017 0830 WED		Date/Time To: 05/10/2017 2030 WED				
<b>4. Operations Personnel</b>						
<b>PLANNING OPERATIONS CHIEF</b>		STEVE WEAVER JEREMY BRAND (T)		<b>OPERATIONS CHIEF</b>		VICKA EDGE; JIM DURRWACHTER L. SMITH (T); S. BOWMAN (T)
<b>BRANCH DIRECTOR</b>		DARRELL MILLER		<b>DIVISION/GROUP SUPERVISOR</b>		TIM STILTNER, DAVID QUISENBERRY (T)
<b>SAFETY</b>		BRAD LIDELL; MIKE COOK TONY RIVERS (T)		<b>AIR OPS BRANCH DIRECTOR</b>		TIM FAUST
<b>5. Resources Assigned this Period</b>						
Strike Team / Task Force / Resource Designator		LWD	Leader	Number Persons	Drop Off PT./Time	Pick Up PT./Time
STEN O-325		05/19	JOE FOWLER	1	DP#2/1000	DP#2/2000
TFLD (T) O-340		05/20	BRAD WHITTINGTON	1	DP#2/1000	DP#2/2000
ENG6 - AR-OZF - PH - E-641 E-76		05/21	MIKE KOCK	3	DP#2/1000	DP#2/2000
ENG6- SMR #4461 E-1		05/12	TRAVIS L. POLLARD	2	DP#2/1000	DP#2/2000
ENG6 - NC-POR PLE1 E-2		05/21	ANTHONY DAVIS	2	DP#2/1000	DP#2/2000
ENG6 SOUTHEAST FOREST RESOURCES E-58		05/30	HAWTHORNE	3	DP#2/1000	DP#2/2000
WTS1- SUPPORT WILDLANDS FIRE SERVICE I E-132		05/14	DAVID SWEENY	1	DP#2/1000	DP#2/2000
TFLD O-359		05/21	TRAVIS WRIGHT	1	DP#2/1000	DP#2/2000
STEN O-353		05/21	ANDREW C MILLER	1	DP#2/1000	DP#2/2000
ENG6 - SCS #14248 E-148		05/15	JEREMY GANTT	2	DP#2/1000	DP#2/2000
ENG6 - WILDLANDS FIRE SERVICE - D65331 - 1 E-144		05/18	DUSTY KREBSBACH	2	DP#2/1000	DP#2/2000
SOF2 O-252 208-954-4105		05/14	CHRIS CHURCH	1	DP#2/1000	DP#2/2000
EMPF E-316 619-933-5546		05/16	MARTIN CORRILO	1	DP#2/1000	DP#2/2000
<b>6. Control Operations/Work Assignments:</b>						
<b>Purpose: Keep fire North of GA 94/FL 2</b>						
<b>Task: Patrol and mop up within 50 ft of fire perimeter. Respond to any new starts within Div.</b>						
<b>8. Division/Group Communication Summary</b>						
Function	Channel	RX Frequency N/W	RX Tone/NAC	TX Frequency N/W	TX Tone/NAC	Mode
COMMAND	2	159.12		151.37	100	A
AIR TO GROUND	4	169.2000N	NONE	169.2000N	NONE	A
TACTICAL	9	159.285	CSQ	159.2850	156.7	A
AIR TO GROUND	14	166.675	CSQ	166.6750	CSQ	A
AIR TO GROUND	15	169.1500	CSQ	169.1500	CSQ	A
AIR GUARD	16	168.6250	NONE	168.6250	110.9	A
<b>9. Prepared By (Resource Unit Leader)</b>			<b>Approved By (Planning Section Chief)</b>		<b>Date</b>	<b>Time</b>
DONNA THOMAS			BRIAN ELDREDGE		05/08/2017	2346



## Division/Group Assignment List (ICS 204 WF)

<b>1. Incident Name:</b>			<b>3.</b>			
WEST MIMS			<b>I</b>	<b>Division/Group:  B</b>		
<b>2. Operational Period:</b> DAY SHIFT 0830-2030						
Date/Time From:	05/10/2017 0830	WED	Date/Time To:	05/10/2017 2030	WED	
<b>4. Operations Personnel</b>						
<b>PLANNING OPERATIONS CHIEF</b>	STEVE WEAVER JEREMY BRAND (T)		<b>OPERATIONS CHIEF</b>	VICKA EDGE; JIM DURRWACHTER L. SMITH (T); S. BOWMAN (T)		
<b>BRANCH DIRECTOR</b>	DARRELL MILLER		<b>DIVISION/GROUP SUPERVISOR</b>	TIM STILTNER, DAVID QUISENBERRY (T)		
<b>SAFETY</b>	BRAD LIDELL; MIKE COOK TONY RIVERS (T)		<b>AIR OPS BRANCH DIRECTOR</b>	TIM FAUST		
<b>6. Control Operations/Work Assignments:</b>						
<b>Determine and report contained line to Planning OSC1.</b>						
<b>End State: Confine fire perimeter to reduce threats and minimize damage to private timberlands and resources values at risk.</b>						
<b>7. Special Instructions:</b>						
Ensure LCES are in place before operations begin & stay hydrated. Drive defensively and with lights on at all times. Identify escape routes.						
Medical Emergency Channel: Command ETA for Ambulance to Scene: Air: 10 mins Ground: 15 mins Approved Helispot: Drop Point 1 Lat: N 30 30.929 Long: W 82 14.174 <b>Primary</b> - Ambulance is ground contact with air ambulance <b>Secondary</b> - IWI- IC or approved person will use channel 16 (Air Guard) for ground contact with air ambulance						
<b>8. Division/Group Communication Summary</b>						
Function	Channel	RX Frequency N/W	RX Tone/NAC	TX Frequency N/W	TX Tone/NAC	Mode
COMMAND	2	159.12		151.37	100	A
AIR TO GROUND	4	169.2000N	NONE	169.2000N	NONE	A
TACTICAL	9	159.285	CSQ	159.2850	156.7	A
AIR TO GROUND	14	166.675	CSQ	166.6750	CSQ	A
AIR TO GROUND	15	169.1500	CSQ	169.1500	CSQ	A
AIR GUARD	16	168.6250	NONE	168.6250	110.9	A
<b>9. Prepared By (Resource Unit Leader)</b>			<b>Approved By (Planning Section Chief)</b>		<b>Date</b>	<b>Time</b>
DONNA THOMAS			BRIAN ELDREDGE		05/08/2017	2346

## Division/Group Assignment List (ICS 204 WF)

<b>1. Incident Name:</b>			<b>3.</b>			
WEST MIMS			<b>Branch:</b>		<b>Division/Group:</b>	
<b>2. Operational Period:</b> DAY SHIFT 0830-2030			<b>I</b>		<b>C</b>	
Date/Time From: 05/10/2017 0830	WED	Date/Time To: 05/10/2017 2030	WED			
<b>4. Operations Personnel</b>						
<b>PLANNING OPERATIONS CHIEF</b>		STEVE WEAVER JEREMY BRAND (T)		<b>OPERATIONS CHIEF</b>		
				VICTA EDGE; JIM DURRWACHTER L. SMITH (T), S. BOWMAN (T)		
<b>BRANCH DIRECTOR</b>		DARRELL MILLER		<b>DIVISION/GROUP SUPERVISOR</b>		
				BERT PLANTE, ROBERT CLAYTOR (T)		
<b>SAFETY</b>		BRAD LIDELL, MICHAEL COOK TONY RIVERS (T)		<b>AIR OPS BRANCH DIRECTOR</b>		
				TIM FAUST		
<b>5. Resources Assigned this Period</b>						
Strike Team / Task Force / Resource Designator		LWD	Leader	Number Persons	Drop Off PT./Time	Pick Up PT./Time
TFLD - O-86		05/09	DANIEL CEDENO	1	DP#3/1000	DP#3/2000
ENG6 - WILDLANDS FIRE SRVC INC-162856 - 22 E-146		05/22	BRIAN TERRY	3	DP#3/1000	DP#3/2000
ENG6 E-454		05/21	TYLER GALLAGHER		DP#3/1000	DP#3/2000
ENG6 - 61 - VASHP E-450		05/21	JOE JARRELLS		DP#3/1000	DP#3/2000
ENG6-ATTACK-ONE FIRE MGMT SRVC INC E-457		05/21	WAYNE TAYLOR	2	DP#3/1000	DP#3/2000
ENG6 SHOAL CREEK - E651 E-78		05/18	JSCOTT LAYFIELD	3		
TFLD - O-250		05/12	LONNIE CALLOWAY	1	DP#3/1000	DP#3/2000
TPL3 DODGE 71 E-93		05/12	JAMES L. GIBBS JR.	1	DP#3/1000	DP#3/2000
TPL2 LONG 72 - E-94		05/12	TERRY HAZARD	1	DP#3/1000	DP#3/2000
TPL3 EMANUEL 70 E-95		05/12	FRANKLIN BEASLEY	1	DP#3/1000	DP#3/2000
TPL3 - ATTACK ONE FIRE E-463		05/21	JEREMIAH CATES	1	DP#3/1000	DP#3/2000
TPL3 - WILDLANDS FIRE SERVICE INC - 83627 E- 464		05/21	PAUL MCDAVID	2	DP#3/1000	DP#3/2000
TPL3 - WILDLANDS FIRE SERVICE INC - 92622 E- 466		05/21	CHAD SLAYTON	2	DP#3/1000	DP#3/2000
WTS2 - SUPPORT TIPTON & YOUNG E-135		05/31	KEN SWAIN	1	DP#3/1000	DP#3/2000
WTS2 SUPPORT STRICKLANDS TRACTOR E-265		05/21	LUCIUS CORBITT	1	DP#3/1000	DP#3/2000
<b>8. Division/Group Communication Summary</b>						
Function	Channel	RX Frequency N/W	RX Tone/NAC	TX Frequency N/W	TX Tone/NAC	Mode
COMMAND	2	159.12		151.37	100	A
AIR TO GROUND	4	169.2000N	NONE	169.2000N	NONE	A
TRAVEL	6	159.390	CSQ	159.3900	156.7	A
TACTICAL	12	159.4425	CSQ	159.4425	CSQ	A
AIR TO GROUND	14	166.675	CSQ	166.6750	CSQ	A
AIR TO GROUND	15	169.1500	CSQ	169.1500	CSQ	A
AIR GUARD	16	168.6250	NONE	168.6250	110.9	A
<b>9. Prepared By (Resource Unit Leader)</b>			<b>Approved By (Planning Section Chief)</b>		<b>Date</b>	<b>Time</b>
MISSY FORDER			BRIAN ELDREDGE		05/08/2017	2346

## Division/Group Assignment List (ICS 204 WF)

<b>1. Incident Name:</b>			<b>3.</b>			
WEST MIMS			<b>Branch:</b>		<b>Division/Group:</b>	
<b>2. Operational Period:</b> DAY SHIFT 0830-2030			<b>I</b>		<b>C</b>	
Date/Time From: 05/10/2017 0830 WED		Date/Time To: 05/10/2017 2030 WED				
<b>4. Operations Personnel</b>						
<b>PLANNING OPERATIONS CHIEF</b>		STEVE WEAVER JEREMY BRAND (T)		<b>OPERATIONS CHIEF</b>		VICTA EDGE; JIM DURRWACHTER L. SMITH (T), S. BOWMAN (T)
<b>BRANCH DIRECTOR</b>		DARRELL MILLER		<b>DIVISION/GROUP SUPERVISOR</b>		BERT PLANTE, ROBERT CLAYTOR (T)
<b>SAFETY</b>		BRAD LIDELL, MICHAEL COOK TONY RIVERS (T)		<b>AIR OPS BRANCH DIRECTOR</b>		TIM FAUST
<b>5. Resources Assigned this Period</b>						
Strike Team / Task Force / Resource Designator		LWD	Leader	Number Persons	Drop Off PT./Time	Pick Up PT./Time
EMPF - E-375	470-532-8807	05/16	GARY ALLEN FORD	1	DP#3/1000	DP#3/2000
SOF2 - O-244	229-561-2259	05/13	MICKEY BUNTON	1	DP#3/1000	DP#3/2000
STEQ O-376		05/21	JAMIE MILLER	1	DP#3/1000	DP#3/2000
TFLD O-349		05/22	JEFF GOYINGS	1		
CREW - T2IA - PATRICK ENVIRONMENTAL, INC. - NCC - 20A C-11		05/22	WADE KEMP	20		
<b>6. Control Operations/Work Assignments:</b>						
<b>Purpose: Keep fire East of swamp edge break</b>						
<b>Task: Patrol and mop up within 50 ft of fire perimeter. Respond to any new starts within Div. Prep fireline around logging debris as needed coordinating with logging operators. Determine and report contained line to Planning OSC1.</b>						
<b>End State: Confine fire perimeter to reduce threats and minimize damage to private timberlands and resources values at risk.</b>						
<b>7. Special Instructions:</b>						
Ensure LCES are in place before operations begin & stay hydrated. Drive defensively and with lights on at all times. Identify escape routes. Logging operations have started. Stay clear of cutting areas. DOZ1 w/KG Blade Ware 76, E-138, Hilton Bennett is working with Gilyard Logging Operations on Fortner Property. Please be mindful of logging operations that will be ongoing. Ensure that all personnel stay clear of felling operations. Pay attention for potential reburn in logging area. Work with Gilyard Logging foreman on any suppression actions within the logging						
<b>8. Division/Group Communication Summary</b>						
Function	Channel	RX Frequency N/W	RX Tone/NAC	TX Frequency N/W	TX Tone/NAC	Mode
COMMAND	2	159.12		151.37	100	A
AIR TO GROUND	4	169.2000N	NONE	169.2000N	NONE	A
TRAVEL	6	159.390	CSQ	159.3900	156.7	A
TACTICAL	12	159.4425	CSQ	159.4425	CSQ	A
AIR TO GROUND	14	166.675	CSQ	166.6750	CSQ	A
AIR TO GROUND	15	169.1500	CSQ	169.1500	CSQ	A
AIR GUARD	16	168.6250	NONE	168.6250	110.9	A
<b>9. Prepared By (Resource Unit Leader)</b>			<b>Approved By (Planning Section Chief)</b>		<b>Date</b>	<b>Time</b>
MISSY FORDER			BRIAN ELDREDGE		05/08/2017	2346

## Division/Group Assignment List (ICS 204 WF)

<b>1. Incident Name:</b>			<b>3.</b>			
WEST MIMS			<b>I</b>	<b>C</b>		
<b>2. Operational Period:</b> DAY SHIFT 0830-2030						
Date/Time From: 05/10/2017 0830 WED		Date/Time To: 05/10/2017 2030 WED				
<b>4. Operations Personnel</b>						
<b>PLANNING OPERATIONS CHIEF</b>		STEVE WEAVER JEREMY BRAND (T)		<b>OPERATIONS CHIEF</b>		VICTA EDGE; JIM DURRWACHTER L. SMITH (T), S. BOWMAN (T)
<b>BRANCH DIRECTOR</b>		DARRELL MILLER		<b>DIVISION/GROUP SUPERVISOR</b>		BERT PLANTE, ROBERT CLAYTOR (T)
<b>SAFETY</b>		BRAD LIDELL, MICHAEL COOK TONY RIVERS (T)		<b>AIR OPS BRANCH DIRECTOR</b>		TIM FAUST
<b>7. Special Instructions:</b>						
<p><b>area.</b></p> <p>Additional Resources: Superior Pine Tractor Plow D6; SP-83, SP-85, SP-87</p> <p>Medical Emergency Channel: Command ETA for Ambulance to Scene: Air: 10 mins Ground: 25 mins Approved Helispot: Drop Point 3 Lat: N 30 41.257 Long: W 82 28.833</p> <p><b>Primary</b> - Ambulance is ground contact with air ambulance <b>Secondary</b> - IWI- IC or approved person will use channel 16 (Air Guard) for ground contact with air ambulance</p>						
<b>8. Division/Group Communication Summary</b>						
Function	Channel	RX Frequency N/W	RX Tone/NAC	TX Frequency N/W	TX Tone/NAC	Mode
COMMAND	2	159.12		151.37	100	A
AIR TO GROUND	4	169.2000N	NONE	169.2000N	NONE	A
TRAVEL	6	159.390	CSQ	159.3900	156.7	A
TACTICAL	12	159.4425	CSQ	159.4425	CSQ	A
AIR TO GROUND	14	166.675	CSQ	166.6750	CSQ	A
AIR TO GROUND	15	169.1500	CSQ	169.1500	CSQ	A
AIR GUARD	16	168.6250	NONE	168.6250	110.9	A
<b>9. Prepared By (Resource Unit Leader)</b>			<b>Approved By (Planning Section Chief)</b>		<b>Date</b>	<b>Time</b>
MISSY FORDER			BRIAN ELDREDGE		05/08/2017	2346

## Division/Group Assignment List (ICS 204 WF)

<b>1. Incident Name:</b>			<b>3.</b>			
WEST MIMS			<b>Branch:</b>		<b>Division/Group:</b>	
<b>2. Operational Period:</b> DAY SHIFT 0830-2030			<b>I</b>		<b>D</b>	
Date/Time From: 05/10/2017 0830 WED		Date/Time To: 05/10/2017 2030 WED				
<b>4. Operations Personnel</b>						
<b>PLANNING OPERATIONS CHIEF</b>		STEVE WEAVER JEREMY BRAND (T)		<b>OPERATIONS CHIEF</b>		VICTA EDGE, JIM DURRWACHTER L. SMITH (T); S. BOWMAN; (T)
<b>BRANCH DIRECTOR</b>		DARRELL MILLER		<b>DIVISION/GROUP SUPERVISOR</b>		JOE BURGETTE,
<b>SAFETY</b>		BRAD LIDDEL, MICHAEL COOK TONY RIVERS (T)		<b>AIR OPS BRANCH DIRECTOR</b>		TIM FAUST
<b>5. Resources Assigned this Period</b>						
Strike Team / Task Force / Resource Designator		LWD	Leader	Number Persons	Drop Off PT./Time	Pick Up PT./Time
TFLD O-255		05/13	TROY HELMS	1	DP3/1000	DP3/2000
COLQUIT 86 SUPPLY TRUCK E-118		05/21	CHRIS	1	DP3/1000	DP3/2000
ENG6 - OSCEOLA - 641 E-157		05/14	JASON MARTIN	3	DP3/1000	DP3/2000
ENG6 - WILDLANDS FIRE SERVICE E-262		05/20	CHAD ANDERSON	2	DP3/1000	DP3/2000
ENG6 - ATLANTIC WILDFIRE RESOURCES E-264		05/20	SAMUEL ELKINS	3	DP3/1000	DP3/2000
EMPF E-375 470-532-8807		05/17	GARY ALLEN FORD	1	DP3/1000	DP3/2000
SOF2 O-244 229-561-2259		05/13	MICKEY BUNTON	1	DP3/1000	DP3/2000
STEN O-360		05/21	ERIC WARD		DP3/1000	DP3/2000
ENG6 - WILDLANDS FIRE SERVICE INC - 339712-9 E-458		05/21	IRVIN SAUL	3	DP3/1000	DP3/2000
<b>6. Control Operations/Work Assignments:</b>						
<b>Purpose: Keep fire South of Suwannee Canal.</b>						
<b>Task: Coordinate monitoring Billies Island by air with Air Tactical Group Supervisor.</b>						
<b>Assure structure protection is in place</b>						
<b>Patrol and mop up within 50' of fire perimeter</b>						
<b>Respond to any new starts within division</b>						
<b>Determine and report contained line to Planning Operations Section Chief.</b>						
<b>End State: Confine fire perimeter to reduce threats and minimize damage to private timberlands and resource values at risk.</b>						
<b>8. Division/Group Communication Summary</b>						
Function	Channel	RX Frequency N/W	RX Tone/NAC	TX Frequency N/W	TX Tone/NAC	Mode
COMMAND	2	159.12		151.37	100	A
AIR TO GROUND	4	169.2000N	NONE	169.2000N	NONE	A
TRAVEL	6	159.390	CSQ	159.3900	156.7	A
TACTICAL	13	159.4125	CSQ	159.4125	CSQ	A
AIR TO GROUND	14	166.675	CSQ	166.6750	CSQ	A
AIR TO GROUND	15	169.1500	CSQ	169.1500	CSQ	A
AIR GUARD	16	168.6250	NONE	168.6250	110.9	A
<b>9. Prepared By (Resource Unit Leader)</b>			<b>Approved By (Planning Section Chief)</b>		<b>Date</b>	<b>Time</b>
DONNA THOMAS			BRIAN ELDREDGE		05/08/2017	2346

## Division/Group Assignment List (ICS 204 WF)

<b>1. Incident Name:</b>			<b>3.</b>			
WEST MIMS			<b>I</b>		<b>D</b>	
<b>2. Operational Period:</b> DAY SHIFT 0830-2030						
Date/Time From: 05/10/2017 0830 WED		Date/Time To: 05/10/2017 2030 WED				
<b>4. Operations Personnel</b>						
<b>PLANNING OPERATIONS CHIEF</b>		STEVE WEAVER JEREMY BRAND (T)		<b>OPERATIONS CHIEF</b>		VICTA EDGE, JIM DURRWACHTER L. SMITH (T); S. BOWMAN; (T)
<b>BRANCH DIRECTOR</b>		DARRELL MILLER		<b>DIVISION/GROUP SUPERVISOR</b>		JOE BURGETTE,
<b>SAFETY</b>		BRAD LIDDEL, MICHAEL COOK TONY RIVERS (T)		<b>AIR OPS BRANCH DIRECTOR</b>		TIM FAUST
<b>6. Control Operations/Work Assignments:</b>						
<b>7. Special Instructions:</b>						
<p><b>Ensure LCES are in place before operations begin &amp; stay hydrated. Drive defensively and with lights on at all times. Identify escape routes.</b></p> <p>Medical Emergency Channel: Command            ETA for Ambulance to Scene:            Air: 10 mins            Ground: 25 mins            Approved Helispot: Drop Point 3            Lat: N 30 41.257            Long: W 82 28.833</p> <p><b>Primary</b> - Ambulance is ground contact with air ambulance  <b>Secondary</b> - IWI- IC or approved person will use channel 16 (Air Guard) for ground contact with air ambulance</p>						
<b>8. Division/Group Communication Summary</b>						
Function	Channel	RX Frequency N/W	RX Tone/NAC	TX Frequency N/W	TX Tone/NAC	Mode
COMMAND	2	159.12		151.37	100	A
AIR TO GROUND	4	169.2000N	NONE	169.2000N	NONE	A
TRAVEL	6	159.390	CSQ	159.3900	156.7	A
TACTICAL	13	159.4125	CSQ	159.4125	CSQ	A
AIR TO GROUND	14	166.675	CSQ	166.6750	CSQ	A
AIR TO GROUND	15	169.1500	CSQ	169.1500	CSQ	A
AIR GUARD	16	168.6250	NONE	168.6250	110.9	A
<b>9. Prepared By (Resource Unit Leader)</b>			<b>Approved By (Planning Section Chief)</b>		<b>Date</b>	<b>Time</b>
DONNA THOMAS			BRIAN ELDREDGE		05/08/2017	2346

## Division/Group Assignment List (ICS 204 WF)

<b>1. Incident Name:</b>				<b>3.</b>			
WEST MIMS				<b>I</b>		<b>Division/Group: FL FFS CONTINGENCY</b>	
<b>2. Operational Period:</b> DAY SHIFT 0830-2030							
Date/Time From: 05/10/2017 0830		Date/Time To: 05/10/2017 2030					
WED		WED					
<b>4. Operations Personnel</b>							
<b>PLANNING OPERATIONS CHIEF</b>		STEVE WEAVER JEREMY BRAND (T)		<b>OPERATIONS CHIEF</b>		VICTA EDGE; JIM DURRWACHTER L. SMITH (T), S. BOWMAN (T)	
<b>BRANCH DIRECTOR</b>		DARRELL MILLER		<b>DIVISION/GROUP SUPERVISOR</b>		GLENN DAVIS JOHN RAULERSON	
<b>SAFETY</b>		BRAD LIDELL; MIKE COOK TONY RIVERS (T)		<b>AIR OPS BRANCH DIRECTOR</b>		TIM FAUST	
<b>5. Resources Assigned this Period</b>							
Strike Team / Task Force / Resource Designator		LWD	Leader	Number Persons	Drop Off PT./Time	Pick Up PT./Time	
STDZ			ANDY LAMBORN	1	JOHN BETHEA/0800	JOHN BETHEA/2000	
TPL2 JOHN BETHEA				1	JOHN BETHEA/0800	JOHN BETHEA/2000	
TPL2				1	JOHN BETHEA/0800	JOHN BETHEA/2000	
DOZ2				1	JOHN BETHEA/0800	JOHN BETHEA/2000	
DOZ2				1	JOHN BETHEA/0800	JOHN BETHEA/2000	
DOZ2				1	JOHN BETHEA/0800	JOHN BETHEA/2000	
DOZ1				1	JOHN BETHEA/0800	JOHN BETHEA/2000	
TPL CALHOUN 61		05/22	WHITE		JOHN BETHEA/0800	JOHN BETHEA/2000	
TPL DOOLY 62		05/22	HOLCUMB		JOHN BETHEA/0800	JOHN BETHEA/2000	
TPL HOUSTON 61		05/22	SIDLE		JOHN BETHEA/0800	JOHN BETHEA/2000	
ENG6				2	JOHN BETHEA/0800	JOHN BETHEA/2000	
STEQ		05/22	MARTY FORE		JOHN BETHEA/0800	JOHN BETHEA/2000	
<b>6. Control Operations/Work Assignments:</b>							
<b>Purpose:</b> To provide suppression support for incident							
<b>Task:</b> Resources are staged at John Bethea State Forest headquarters. Resources are ready upon calling for IA or extended attack							
<b>End State:</b> Ready support resources to respond to protect structures, timberland and resources values at risk.							
<b>8. Division/Group Communication Summary</b>							
Function	Channel	RX Frequency N/W	RX Tone/NAC	TX Frequency N/W	TX Tone/NAC	Mode	
AIR TO GROUND	4	169.2000N	NONE	169.2000N	NONE	A	
TRAVEL	6	159.390	CSQ	159.3900	156.7	A	
AIR TO GROUND	14	166.675	CSQ	166.6750	CSQ	A	
AIR TO GROUND	15	169.1500	CSQ	169.1500	CSQ	A	
AIR GUARD	16	168.6250	NONE	168.6250	110.9	A	
<b>9. Prepared By (Resource Unit Leader)</b>			<b>Approved By (Planning Section Chief)</b>			<b>Date</b>	<b>Time</b>
DONNA THOMAS			BRIAN ELDREDGE			05/08/2017	2346

## Division/Group Assignment List (ICS 204 WF)

<b>1. Incident Name:</b>			<b>3.</b>			
WEST MIMS			<b>I</b>	<b>Division/Group:</b>		
<b>2. Operational Period:</b> DAY SHIFT 0830-2030				<b>FL FFS CONTINGENCY</b>		
Date/Time From: 05/10/2017 0830	WED	Date/Time To: 05/10/2017 2030		WED		
<b>4. Operations Personnel</b>						
<b>PLANNING OPERATIONS CHIEF</b>	STEVE WEAVER JEREMY BRAND (T)		<b>OPERATIONS CHIEF</b>	VICTA EDGE; JIM DURRWACHTER L. SMITH (T), S. BOWMAN (T)		
<b>BRANCH DIRECTOR</b>	DARRELL MILLER		<b>DIVISION/GROUP SUPERVISOR</b>	GLENN DAVIS JOHN RAULERSON		
<b>SAFETY</b>	BRAD LIDELL; MIKE COOK TONY RIVERS (T)		<b>AIR OPS BRANCH DIRECTOR</b>	TIM FAUST		
<b>7. Special Instructions:</b>						
<p>Ensure LCES are in place before operations begin. Drive defensively and with lights on at all times. Assure common communication per IAP Commo Plan is established before engagement.</p> <p>Contact Rick Dolan, FL FSS Unified IC 352-222-4420 when activating contingency resources.</p> <p>STEQ (Gregory) with 3 Type 4 Tractor Plows.</p>						
<b>8. Division/Group Communication Summary</b>						
Function	Channel	RX Frequency N/W	RX Tone/NAC	TX Frequency N/W	TX Tone/NAC	Mode
AIR TO GROUND	4	169.2000N	NONE	169.2000N	NONE	A
TRAVEL	6	159.390	CSQ	159.3900	156.7	A
AIR TO GROUND	14	166.675	CSQ	166.6750	CSQ	A
AIR TO GROUND	15	169.1500	CSQ	169.1500	CSQ	A
AIR GUARD	16	168.6250	NONE	168.6250	110.9	A
<b>9. Prepared By (Resource Unit Leader)</b>			<b>Approved By (Planning Section Chief)</b>		<b>Date</b>	<b>Time</b>
DONNA THOMAS			BRIAN ELDREDGE		05/08/2017	2346



## Division/Group Assignment List (ICS 204 WF)

<b>1. Incident Name:</b>			<b>3.</b>			
WEST MIMS			<b>Branch:</b>		<b>Division/Group:</b>	
<b>2. Operational Period:</b>			<b>I</b>		<b>NIGHT SHIFT</b>	
Date/Time From: 05/10/2017 2000      WED		Date/Time To: 05/11/2017 0800      THU				
<b>4. Operations Personnel</b>						
<b>OPERATIONS CHIEF</b>		JAMES SCHWARTZ		<b>BRANCH DIRECTOR</b>		
<b>SAFETY</b>		KEVIN LABELLA		<b>DIVISION/GROUP SUPERVISOR</b>		
				PAUL MANCUSO; RUSSELL COPP CHRIS O'BRIEN		
<b>5. Resources Assigned this Period</b>						
Strike Team / Task Force / Resource Designator		LWD	Leader	Number Persons	Drop Off PT./Time	Pick Up PT./Time
STEQ - O-257		05/12	MICHAEL BLOODWORTH	1	DP#3/2000	DP#3/0800
TPL4 BLECKLEY 71 E-70		05/12	WILLIAM SHELAR	1	DP#3/2000	DP#3/0800
TPL4 EVANS 72 E-71		05/12	ASHLEY SIKES	1	DP#3/2000	DP#3/0800
TPL4 CANDLER 71 E-72		05/12	JOSEPH HILLIARD	1	DP#3/2000	DP#3/0800
ENG6 - CRANE'S WILDLAND FIRE RESPONSE E-150		05/19	MICHAEL THOMAS	2	DP#3/2000	DP#3/0800
ENG6 - PATRICK ENVIRONMENTAL E95 E-147		05/21	NAIL RAFIKOV	3	DP#3/2000	DP#3/0800
ENG6 - PATRICK ENVIRONMENTAL E94 E-151		05/18	RIDGLEY	3	DP#3/2000	DP#3/0800
ENG6 - #9663 - SMITHVILLE TF6 E-259		05/13	GOLDEN W POWELL	3	DP#3/2000	DP#3/0800
ENG6 - NC-NCF E-691 E-255		05/20	CODY TROUT	3	DP#3/2000	DP#3/0800
ENG6 - NC-NCF E-621 E-256		05/20	JASON BOONE	3	DP#3/2000	DP#3/0800
EMPF E-342	928-249-0541	05/13	MICHAEL KOEPKE	1	DP#3/2000	DP#3/0800
EMPF E-352		05/16	KATHY NEMMERS	1	DP#3/2000	DP#3/0800
<b>6. Control Operations/Work Assignments:</b>						
<p><b>Purpose:</b> Provide transitional support to day shift operations. Keep fire within fire control lines.</p> <p><b>Task:</b> Patrol lines in Div B,C,D Monitor fire activity and take appropriate action</p> <p><b>End State:</b> Confine fire consistent with protecting structures, private timberlands, and resource values at risk</p>						
<b>7. Special Instructions:</b>						
<p>Contact Night Incident Communications for any needs. Brief/Debrief at John M Bethea State Forest with all night Divisions. Identify escape routes. Loggers will be camping at the cutting area. Patrol logging operation area for potential reburn. Work with the logging foreman on any suppression action needs within the logging area.</p>						
<b>8. Division/Group Communication Summary</b>						
Function	Channel	RX Frequency N/W	RX Tone/NAC	TX Frequency N/W	TX Tone/NAC	Mode
AIR TO GROUND	4	169.2000N	NONE	169.2000N	NONE	A
COMMAND	5	159.4650	CSQ	151.1450	123.0	A
TRAVEL	6	159.3900	CSQ	159.3900	156.7	A
AIR GUARD	16	168.6250	NONE	168.6250	110.9	A
<b>9. Prepared By (Resource Unit Leader)</b>			<b>Approved By (Planning Section Chief)</b>		<b>Date</b>	<b>Time</b>
DONNA THOMAS			BRIAN ELDREDGE		05/08/2017	2346

## Division/Group Assignment List (ICS 204 WF)

<b>1. Incident Name:</b>			<b>3.</b>			
WEST MIMS			<b>I</b>	<b>Division/Group:  NIGHT SHIFT</b>		
<b>2. Operational Period:</b> <b>NIIGHT SHIFT 2000-0800</b>						
Date/Time From:	Date/Time To:					
05/10/2017 2000                      WED	05/11/2017 0800                      THU					
<b>4. Operations Personnel</b>						
<b>OPERATIONS CHIEF</b>	JAMES SCHWARTZ		<b>BRANCH DIRECTOR</b>			
<b>SAFETY</b>	KEVIN LABELLA		<b>DIVISION/GROUP SUPERVISOR</b>		PAUL MANCUSO; RUSSELL COPP CHRIS O'BRIEN	
<b>7. Special Instructions:</b>						
<p>Medical Emergency Channel: Command  ETA for Ambulance to Scene:  Ground: 25 mins  Approved Helispot: Drop Point 3  Lat: N 30 41.257  Long: W 82 28.833</p>						
<b>8. Division/Group Communication Summary</b>						
Function	Channel	RX Frequency N/W	RX Tone/NAC	TX Frequency N/W	TX Tone/NAC	Mode
AIR TO GROUND	4	169.2000N	NONE	169.2000N	NONE	A
COMMAND	5	159.4650	CSQ	151.1450	123.0	A
TRAVEL	6	159.3900	CSQ	159.3900	156.7	A
AIR GUARD	16	168.6250	NONE	168.6250	110.9	A
<b>9. Prepared By (Resource Unit Leader)</b>			<b>Approved By (Planning Section Chief)</b>		<b>Date</b>	<b>Time</b>
DONNA THOMAS			BRIAN ELDREDGE		05/08/2017	2346

## Division/Group Assignment List (ICS 204 WF)

<b>1. Incident Name:</b>			<b>3.</b>			
WEST MIMS			<b>Branch:</b>		<b>Division/Group:</b>	
<b>2. Operational Period:</b> <b>DAY SHIFT 0830-2030</b>			<b>III</b>		<b>M/N</b>	
Date/Time From: 05/10/2017 0830	WED	Date/Time To: 05/10/2017 2030	WED			
<b>4. Operations Personnel</b>						
<b>PLANNING OPERATIONS CHIEF</b>		STEVE WEAVER JEREMY BRAND (T)		<b>OPERATIONS CHIEF</b>		
<b>BRANCH DIRECTOR</b>		RON SMITH		<b>DIVISION/GROUP SUPERVISOR</b>		
<b>SAFETY</b>		TOMMY HAWKINS		<b>AIR OPS BRANCH DIRECTOR</b>		
				VICTA EDGE, JIM DURRWACHTER L. SMITH (T), S. BOWMAN (T)		
				JOHN HOHANSON, BRIAN BROWNING JASON LAGO (T)		
				TIM FAUST		
<b>5. Resources Assigned this Period</b>						
Strike Team / Task Force / Resource Designator		LWD	Leader	Number Persons	Drop Off PT./Time	Pick Up PT./Time
WATER TENDER - SUPPORT - T2 WET 'N RED, LLC - 58592 E-365		05/16	ALLEN WEST	2	/1000	/2000
WATER TENDER - SUPPORT - T2 - BONNELL SAND & GRAVEL, I E-366		05/16	JOE BONNELL	1	/1000	/2000
ENG6 - ATTACK ONE FIRE MGMT SERV E-257		05/28	JOHN HOELLERICH	2	/1000	/2000
ENG6 - SCHOLL FIRE & FUELS MGMT. E-263		05/19	BEN HAYS	3	/1000	/2000
ENG6 - AR-OZF - SYL - E-671 E-283		05/10	DONALD P WAYMAN	3	/1000	/2000
STEQ O-201		05/23	DERRICK W DUNCAN	1	/1000	/2000
TPL2 WAYNE 63 E-292		05/23	JONATHAN KYLE HERRIN	1	/1000	/2000
TPL2 CHARLTON 70 E-293		05/23	KENNETH HARRIS	1	/1000	/2000
TPL2 ECHOLS 70 E-294		05/23	WILLIAM KYLER REGISTER	1	/1000	/2000
EMPF O-174 616-403-1873		05/12	LINDA KRAMER	1	/1000	/2000
SOF2 O-195 520-591-2434		05/11	JOHN MCGEE	1	/1000	/2000
<b>6. Control Operations/Work Assignments:</b>						
<p><b>Purpose: Keep fire West of Swamp edge break and South of Suwannee Canal in DIV M and South of Crawford Rd in DIV N</b></p> <p><b>Task: Patrol and mop up within 50 ft of fire perimeter. Respond to any new starts within Div. Prep for strategic firing of control lines. Determine and report contained line to Planning OSC1.</b></p>						
<b>8. Division/Group Communication Summary</b>						
Function	Channel	RX Frequency N/W	RX Tone/NAC	TX Frequency N/W	TX Tone/NAC	Mode
COMMAND	3	159.120		151.370	82.5	A
AIR TO GROUND	4	169.2000N	NONE	169.2000N	NONE	A
TACTICAL	10	168.350	CSQ	168.350	CSQ	A
AIR TO GROUND	14	166.675	CSQ	166.6750	CSQ	A
AIR TO GROUND	15	169.1500	CSQ	169.1500	CSQ	A
AIR GUARD	16	168.6250	NONE	168.6250	110.9	A
<b>9. Prepared By (Resource Unit Leader)</b>			<b>Approved By (Planning Section Chief)</b>		<b>Date</b>	<b>Time</b>
DONNA THOMAS			BRIAN ELDREDGE		05/08/2017	2346

## Division/Group Assignment List (ICS 204 WF)

<b>1. Incident Name:</b>			<b>3.</b>			
WEST MIMS			<b>III</b>		<b>M/N</b>	
<b>2. Operational Period:</b> DAY SHIFT 0830-2030						
Date/Time From: 05/10/2017 0830 WED		Date/Time To: 05/10/2017 2030 WED				
<b>4. Operations Personnel</b>						
<b>PLANNING OPERATIONS CHIEF</b>		STEVE WEAVER JEREMY BRAND (T)		<b>OPERATIONS CHIEF</b>		VICTA EDGE, JIM DURRWACHTER L. SMITH (T), S. BOWMAN (T)
<b>BRANCH DIRECTOR</b>		RON SMITH		<b>DIVISION/GROUP SUPERVISOR</b>		JOHN HOHANSON, BRIAN BROWNING JASON LAGO (T)
<b>SAFETY</b>		TOMMY HAWKINS		<b>AIR OPS BRANCH DIRECTOR</b>		TIM FAUST
<b>6. Control Operations/Work Assignments:</b>						
End State: Confine fire perimeter to reduce threats and minimize damage to private timberlands and resources values at risk						
<b>7. Special Instructions:</b>						
Ensure LCES are in place before operations begin and stay hydrated. Drive defensively and with lights on at all times. Identify escape routes.						
<p>Medical Emergency Channel: Command                      ETA for Ambulance to Scene:                      Air: 7 mins                      Ground: 15 mins                      Approved Helispot: POGO Helibase                      Lat: N 30 44.26                      Long: W 82 07.69</p> <p><b>Primary</b> - Ambulance is ground contact with air ambulance  <b>Secondary</b> - IWI- IC or approved person will use channel 16 (Air Guard) for ground contact with air ambulance</p>						
<b>8. Division/Group Communication Summary</b>						
Function	Channel	RX Frequency N/W	RX Tone/NAC	TX Frequency N/W	TX Tone/NAC	Mode
COMMAND	3	159.120		151.370	82.5	A
AIR TO GROUND	4	169.2000N	NONE	169.2000N	NONE	A
TACTICAL	10	168.350	CSQ	168.350	CSQ	A
AIR TO GROUND	14	166.675	CSQ	166.6750	CSQ	A
AIR TO GROUND	15	169.1500	CSQ	169.1500	CSQ	A
AIR GUARD	16	168.6250	NONE	168.6250	110.9	A
<b>9. Prepared By (Resource Unit Leader)</b>			<b>Approved By (Planning Section Chief)</b>		<b>Date</b>	<b>Time</b>
DONNA THOMAS			BRIAN ELDREDGE		05/08/2017	2346

## Division/Group Assignment List (ICS 204 WF)

<b>1. Incident Name:</b>			<b>3.</b>			
WEST MIMS			<b>Branch:</b>		<b>Division/Group:</b>	
<b>2. Operational Period:</b> <b>DAY SHIFT 0830-2030</b>			<b>III</b>		<b>O</b>	
Date/Time From: 05/10/2017 0830           WED		Date/Time To: 05/10/2017 2030           WED				
<b>4. Operations Personnel</b>						
<b>PLANNING OPERATIONS CHIEF</b>		STEVE WEAVER JEREMY BRAND (T)		<b>OPERATIONS CHIEF</b>		VICTA EDGE, JIM DURRWACHTER L. SMITH (T), S. BOWMAN (T)
<b>BRANCH DIRECTOR</b>		RON SMITH		<b>DIVISION/GROUP SUPERVISOR</b>		ROBERT G THORP BRANDON HUGHES (T)
<b>SAFETY</b>		TOMMY HAWKINS		<b>AIR OPS BRANCH DIRECTOR</b>		TIM FAUST
<b>5. Resources Assigned this Period</b>						
Strike Team / Task Force / Resource Designator		LWD	Leader	Number Persons	Drop Off PT./Time	Pick Up PT./Time
CREW - T1 - PIKE IHC C-9		05/21	JOHN ALLBRIGHT	20	42/1000	42/2000
TFLD O-260		05/18	CODY HOLLOWAY	1	42/1000	42/2000
ENG6 - UNIT #9060 - AMARILLO E-119		05/18	RANDALL FUCHS	3	42/1000	42/2000
ENG6 - FWS - 462 E-261		05/21	REBECCA GOOSMAN	3	42/1000	42/2000
ENG6 - KY-CGP - WFM2 E-258		05/10	EDDIE CAPPS	3	42/1000	42/2000
TPL5 - UNIT #9892 - WOLFFORTH TF8 E-123		05/18	NATHAN SMITH	2	42/1000	42/2000
TPL5 - UNIT #9693 - SMITHVILLE E-124		05/18	MIKE ADAMS	2	42/1000	42/2000
TFLD O-274 325-276-1713		05/18	SHANE CRIMM	1	42/1000	42/2000
ENG6 - UNIT #9360 - MCGREGOR TF3 E-120		05/18	JASON MYERS	3	42/1000	42/2000
ENG6 - 151 TEXAS FIRE RESOURCES E-260		05/20	LARRY WEAVER	3	42/1000	42/2000
TPL4 - UNIT #8394 - JASPER E-125		05/18	JOSH MIZRANY	2	42/1000	42/2000
TPL5 - UNIT #8591 - WOODVILLE E-126		05/18	CHARLES CORLEY	2	42/1000	42/2000
STEQ O-371		05/20	MICHAEL HENDERSON	1		
TPL3 - GFC1067 E-370		05/21	KEVIN ANDERSON	1	42/1000	42/2000
TPL2 - GFC3307 E-371		05/21	BENJI ANDERSON	1	42/1000	42/2000
<b>8. Division/Group Communication Summary</b>						
Function	Channel	RX Frequency N/W	RX Tone/NAC	TX Frequency N/W	TX Tone/NAC	Mode
AIR TO GROUND	4	169.2000N	NONE	169.2000N	NONE	A
COMMAND	5	159.465	CSQ	151.1450	123.0	A
TACTICAL	8	163.7125	CSQ	163.7125	CSQ	A
AIR TO GROUND	14	166.675	CSQ	166.6750	CSQ	A
AIR TO GROUND	15	169.1500	CSQ	169.1500	CSQ	A
AIR GUARD	16	168.6250	NONE	168.6250	110.9	A
<b>9. Prepared By (Resource Unit Leader)</b>			<b>Approved By (Planning Section Chief)</b>		<b>Date</b>	<b>Time</b>
DONNA THOMAS			BRIAN ELDREDGE		05/08/2017	2346

## Division/Group Assignment List (ICS 204 WF)

<b>1. Incident Name:</b>				<b>3.</b>			
WEST MIMS				<b>Branch:</b>		<b>Division/Group:</b>	
<b>2. Operational Period:</b> DAY SHIFT 0830-2030				<b>III</b>		<b>O</b>	
Date/Time From: 05/10/2017 0830 WED		Date/Time To: 05/10/2017 2030 WED					
<b>4. Operations Personnel</b>							
<b>PLANNING OPERATIONS CHIEF</b>		STEVE WEAVER JEREMY BRAND (T)		<b>OPERATIONS CHIEF</b>		VICTA EDGE, JIM DURRWACHTER L. SMITH (T), S. BOWMAN (T)	
<b>BRANCH DIRECTOR</b>		RON SMITH		<b>DIVISION/GROUP SUPERVISOR</b>		ROBERT G THORP BRANDON HUGHES (T)	
<b>SAFETY</b>		TOMMY HAWKINS		<b>AIR OPS BRANCH DIRECTOR</b>		TIM FAUST	
<b>5. Resources Assigned this Period</b>							
Strike Team / Task Force / Resource Designator		LWD	Leader	Number Persons	Drop Off PT./Time	Pick Up PT./Time	
TPL2 - GFC3295 E-372		05/21	SAMUEL LITTLE	1	42/1000	42/2000	
HEQB O-275		05/14	CHARLES DANIELS	1	42/1000	42/2000	
ROT RANCH EXCAVATOR W/ MASTICATOR E-74		05/14	PARISH	5	42/1000	42/2000	
ROT RANCH TRACTOR/CUTTER E-73		05/14	DARYL	1	42/1000	42/2000	
STEQ - O-300		05/22	JAMES MASHBURN	1	42/1000	42/2000	
TPL3 - GFC3288 - E-367		05/16	ROB MORE	1	42/1000	42/2000	
TPL3 - GFC3234 - E-368		05/15	BRANDON DAVIS	1	42/1000	42/2000	
TPL3 - GFC3219 - E-369		05/15	RUSSELL FOWLER	1	42/1000	42/2000	
STEN O-327		05/19	LARRY BLYTHE	1	42/1000	42/2000	
STEQ O-258		05/16	TODD MILAM	1	42/1000	42/2000	
TPL4 - GFC3204 E-404		05/16	DAVID COTTLES	1	42/1000	42/2000	
TPL4 - GFC3226 E-405		05/16	BRANDON CHAFIN	1	42/1000	42/2000	
TPL4 - GFC1467 E-406		05/16	CHARLES WATSON	1	42/1000	42/2000	
EMPF W/UTV O-346 229--561-4224		05/17	DEAN CARPENTER	1	42/1000	42/2000	
SOF2 O-195		05/21	JOHN MCGEE	1	42/1000	42/2000	
<b>8. Division/Group Communication Summary</b>							
Function	Channel	RX Frequency N/W	RX Tone/NAC	TX Frequency N/W	TX Tone/NAC	Mode	
AIR TO GROUND	4	169.2000N	NONE	169.2000N	NONE	A	
COMMAND	5	159.465	CSQ	151.1450	123.0	A	
TACTICAL	8	163.7125	CSQ	163.7125	CSQ	A	
AIR TO GROUND	14	166.675	CSQ	166.6750	CSQ	A	
AIR TO GROUND	15	169.1500	CSQ	169.1500	CSQ	A	
AIR GUARD	16	168.6250	NONE	168.6250	110.9	A	
<b>9. Prepared By (Resource Unit Leader)</b>			<b>Approved By (Planning Section Chief)</b>			<b>Date</b>	<b>Time</b>
DONNA THOMAS			BRIAN ELDREDGE			05/08/2017	2346

## Division/Group Assignment List (ICS 204 WF)

<b>1. Incident Name:</b>			<b>3.</b>			
WEST MIMS			<b>III</b>		<b>O</b>	
<b>2. Operational Period:</b> DAY SHIFT 0830-2030						
Date/Time From: 05/10/2017 0830 WED		Date/Time To: 05/10/2017 2030 WED				
<b>4. Operations Personnel</b>						
<b>PLANNING OPERATIONS CHIEF</b>		STEVE WEAVER JEREMY BRAND (T)		<b>OPERATIONS CHIEF</b>		VICTA EDGE, JIM DURRWACHTER L. SMITH (T), S. BOWMAN (T)
<b>BRANCH DIRECTOR</b>		RON SMITH		<b>DIVISION/GROUP SUPERVISOR</b>		ROBERT G THORP BRANDON HUGHES (T)
<b>SAFETY</b>		TOMMY HAWKINS		<b>AIR OPS BRANCH DIRECTOR</b>		TIM FAUST
<b>6. Control Operations/Work Assignments:</b>						
<p><b>Task: Anchor suppression work at fire perimeter in O. Prep lines and coordinate strategic firing with Unified IC's, as appropriate. Coordinate with Structure Protection group supervisor on triage of structures for point protection. Continue dozer line construction as appropriate to establish or strengthen containment.</b></p> <p><b>Purpose: To keep fire confined and contained Keep fire West of St Mary's River To protect outlying structures</b></p> <p><b>End State: Contain fire perimeter within boundaries of DIV O. Protect City of St. George residents and private property. Minimize damage to both public and private infrastructure. Protect resource values at risk.</b></p>						
<b>7. Special Instructions:</b>						
<p><b>Ensure LCES are in place before operations begin and stay hydrated. Drive defensively and with lights on at all times. Identify escape routes.</b></p> <p>Medical Emergency Channel: Command ETA for Ambulance to Scene: Air: 10 mins Ground: 15 mins Approved Helispot: POGO Helibase Lat: N 30 44.26 Long: W 82 07.69 <b>Primary</b> - Ambulance is ground contact with air ambulance <b>Secondary</b> - IWI- IC or approved person will use channel 16 (Air Guard) for ground contact with air ambulance</p>						
<b>8. Division/Group Communication Summary</b>						
Function	Channel	RX Frequency N/W	RX Tone/NAC	TX Frequency N/W	TX Tone/NAC	Mode
AIR TO GROUND	4	169.2000N	NONE	169.2000N	NONE	A
COMMAND	5	159.465	CSQ	151.1450	123.0	A
TACTICAL	8	163.7125	CSQ	163.7125	CSQ	A
AIR TO GROUND	14	166.675	CSQ	166.6750	CSQ	A
AIR TO GROUND	15	169.1500	CSQ	169.1500	CSQ	A
AIR GUARD	16	168.6250	NONE	168.6250	110.9	A
<b>9. Prepared By (Resource Unit Leader)</b>			<b>Approved By (Planning Section Chief)</b>		<b>Date</b>	<b>Time</b>
DONNA THOMAS			BRIAN ELDREDGE		05/08/2017	2346

## Division/Group Assignment List (ICS 204 WF)

<b>1. Incident Name:</b>				<b>3.</b>			
WEST MIMS				<b>III</b>		<b>INITIAL ATTACK</b>	
<b>2. Operational Period:</b> DAY SHIFT 0830-2030							
Date/Time From: 05/10/2017 0830		Date/Time To: 05/10/2017 2030					
WED		WED					
<b>4. Operations Personnel</b>							
<b>PLANNING OPERATIONS CHIEF</b>		STEVE WEAVER JEREMY BRAND (T)		<b>OPERATIONS CHIEF</b>		VICTA EDGE; JIM DURRWACHTER L. SMITH(T), S. BOWMAN (T)	
<b>BRANCH DIRECTOR</b>		RON SMITH		<b>DIVISION/GROUP SUPERVISOR</b>		DONNIE HARRIS	
<b>SAFETY</b>		TOMMY HAWKINS		<b>AIR OPS BRANCH DIRECTOR</b>		TIM FAUST	
<b>5. Resources Assigned this Period</b>							
Strike Team / Task Force / Resource Designator		LWD	Leader	Number Persons	Drop Off PT./Time	Pick Up PT./Time	
ICT4			CORY BRYANT	1	/0800	/2000	
TFLD O-205		05/08	ADAM MCCULLOUGH	1	/0800	/2000	
HEQB O-187 (DAY OFF 5/7)		05/20	PRIVETT	1	/0800	/2000	
DOZ2 OKE-54 E-34 IA		05/20	BROWN	1	/0800	/2000	
OKE 56 - TPL E-35 IA		05/20	JEFF SWAIN	1	/0800	/2000	
ENGINE - T6 - OK-4261 E-36 IA		05/22	DIMAGGIO	2	/0800	/2000	
SC-CSR - TPL 223 E-240 CONT			UNSTAFFED	1	/0800	/2000	
NC PXI - TPL E-131 CONT		05/15	POWELL	1	/0800	/2000	
ENGINE - T6 - SC-CRR-E262 E-237 IA		05/22	ROBERT ASKINS	2	/0800	/2000	
DOZ2 - GA-SAR-922 IA			WAYNE SMITH	1	/0800	/2000	
SOF2(T) O-281.59		05/15	CHARLES E PATTERSON	1			
<b>6. Control Operations/Work Assignments:</b>							
<p><b>Purpose:</b> Ensure communication with OKR/GA and FL State          Ensure timely response on any IA within OKR jurisdictional boundaries and vicinity          Assist as approved by Agency Administrators and Unified Incident Commanders.</p> <p><b>Task:</b> Coordinate with OKR duty officer for notification of reported new ignitions          Coordinate initial attack action with assigned aviation and/or ground assets.          Determine IA resource repositioning across OKR          Establish common communication per IAP before engagement.</p>							
<b>8. Division/Group Communication Summary</b>							
Function	Channel	RX Frequency N/W	RX Tone/NAC	TX Frequency N/W	TX Tone/NAC	Mode	
COMMAND	3	159.120		151.370	82.5	A	
AIR TO GROUND	4	169.2000N	NONE	169.2000N	NONE	A	
TACTICAL	8	163.7125	CSQ	163.7125	CSQ	A	
AIR TO GROUND	14	166.675	CSQ	166.6750	CSQ	A	
AIR TO GROUND	15	169.1500	CSQ	169.1500	CSQ	A	
AIR GUARD	16	168.6250	NONE	168.6250	110.9	A	
<b>9. Prepared By (Resource Unit Leader)</b>			<b>Approved By (Planning Section Chief)</b>			<b>Date</b>	<b>Time</b>
DONNA THOMAS			BRIAN ELDREDGE			05/08/2017	2346



## Division/Group Assignment List (ICS 204 WF)

<b>1. Incident Name:</b>			<b>3.</b>			
WEST MIMS			<b>III</b>	<b>INITIAL ATTACK</b>		
<b>2. Operational Period:</b> DAY SHIFT 0830-2030						
Date/Time From: 05/10/2017 0830 WED		Date/Time To: 05/10/2017 2030 WED				
<b>4. Operations Personnel</b>						
<b>PLANNING OPERATIONS CHIEF</b>		STEVE WEAVER JEREMY BRAND (T)		<b>OPERATIONS CHIEF</b>		VICTA EDGE; JIM DURRWACHTER L. SMITH(T), S. BOWMAN (T)
<b>BRANCH DIRECTOR</b>		RON SMITH		<b>DIVISION/GROUP SUPERVISOR</b>		DONNIE HARRIS
<b>SAFETY</b>		TOMMY HAWKINS		<b>AIR OPS BRANCH DIRECTOR</b>		TIM FAUST
<b>6. Control Operations/Work Assignments:</b>						
<p>End State: Protect human life                  Minimize damage to public and private property                  Minimize environmental damage to protect habitat species.</p>						
<b>7. Special Instructions:</b>						
<p>Contact Resource Advisors for any cultural or archeological needs, as well as, RCW concerns.                  Ensure LCES are in place before operations begin &amp; stay hydrated.                  Drive defensively and with lights on at all times.                  Communications: Use the tactical channel for the division you are in.                  Staging on east side at Refuge office.</p> <p>Contact Buck Kline, GFC Unified IC +23-678-2694 when activating GFC contingency resources that are unassigned.</p>						
<b>8. Division/Group Communication Summary</b>						
Function	Channel	RX Frequency N/W	RX Tone/NAC	TX Frequency N/W	TX Tone/NAC	Mode
COMMAND	3	159.120		151.370	82.5	A
AIR TO GROUND	4	169.2000N	NONE	169.2000N	NONE	A
TACTICAL	8	163.7125	CSQ	163.7125	CSQ	A
AIR TO GROUND	14	166.675	CSQ	166.6750	CSQ	A
AIR TO GROUND	15	169.1500	CSQ	169.1500	CSQ	A
AIR GUARD	16	168.6250	NONE	168.6250	110.9	A
<b>9. Prepared By (Resource Unit Leader)</b>			<b>Approved By (Planning Section Chief)</b>		<b>Date</b>	<b>Time</b>
DONNA THOMAS			BRIAN ELDREDGE		05/08/2017	2346

## Division/Group Assignment List (ICS 204 WF)

<b>1. Incident Name:</b>			<b>3.</b>			
WEST MIMS			<b>Branch:</b>		<b>Division/Group:</b>	
<b>2. Operational Period:</b>			<b>III</b>			
<b>NIIGHT SHIFT 2000-0800</b>						
Date/Time From: 05/10/2017 2000      WED		Date/Time To: 05/11/2017 0800      THU				
<b>4. Operations Personnel</b>						
<b>OPERATIONS CHIEF</b>		BILL WOODYARD PETE MYERS		<b>BRANCH DIRECTOR</b>		
				ROBERT TRINCADO		
<b>SAFETY</b>		STEVE SMESTED		<b>DIVISION/GROUP SUPERVISOR</b>		
				SHANE STURGILL; MICHAEL CACHERO		
<b>5. Resources Assigned this Period</b>						
Strike Team / Task Force / Resource Designator		LWD	Leader	Number Persons	Drop Off PT./Time	Pick Up PT./Time
ENG3 - WILDLANDS FIRE SERVICE INC - 892627 - 16 E-276		05/21	TYSON HUNT	3	DP#18/2000	DP#18/0800
ENG3 - FAIRMOUNT - ENGINE 34 E-278		05/24	JOHNNIE T MACY	3	DP#18/2000	DP#18/0800
ENG6 - CROSS TIMBERS FIRE MANAGEMENT - C03703 - E-284		05/10	SCOTT WHITE	3	DP#18/2000	DP#18/0800
STEQ O-225		05/15	HAYDEN S. HOLT O-225	1	DP#18/2000	DP#18/0800
TPL4 TIFT 70 GFC3212 E-297		05/15	TAYLOR D. BROWN	1	DP#18/2000	DP#18/0800
TPL5 MILLER 71 GFC1018 E-298		05/15	GABRIEL A LOWRY	1	DP#18/2000	DP#18/0800
TPL3 WORTH 71 - GFC4203318 E-296		05/15	SAMUEL J. REYNOLDS	1	DP#18/2000	DP#18/0800
WT2 E-313		05/17	WOODY BARGERON		DP#18/2000	DP#18/0800
WT2 E-340		05/17	DEVIN MCHZLEY		DP#18/2000	DP#18/0800
EMPF O-388      602-410-6788		05/30	KYLE PORT	1	DP#18/2000	DP#18/0800
TPL2 - FORESTRY COMPANY, THE INC - N03202 E-461		05/21	SAVELL SCHMIDT	1	DP#18/2000	DP#18/0800
TFLD O-384		05/21	RICHARD SACK	1	DP#18/2000	DP#18/0800
<b>6. Control Operations/Work Assignments:</b>						
<b>Purpose:</b> Provide transitional support to day shift operations. Keep fire within fire control lines.						
<b>Task:</b> Patrol lines in Div O, N, M Monitor fire activity and take appropriate action						
<b>End State:</b> Confine fire consistant with protecting structures, private timberlands, and resource values at risk						
<b>7. Special Instructions:</b>						
Ensure LCES are in place before operations begin and stay hydrated. Drive defensively and with lights on at all times. Identify escape routes.						
<b>8. Division/Group Communication Summary</b>						
Function	Channel	RX Frequency N/W	RX Tone/NAC	TX Frequency N/W	TX Tone/NAC	Mode
COMMAND	3	159.120		151.370	82.5	A
COMMAND	4	169.2000N	NONE	169.2000N	NONE	A
TACTICAL	8	163.7125	CSQ	163.7125	CSQ	A
AIR GUARD	16	168.6250	NONE	168.6250	110.9	A
<b>9. Prepared By (Resource Unit Leader)</b>			<b>Approved By (Planning Section Chief)</b>		<b>Date</b>	<b>Time</b>
DONNA THOMAS			BRIAN ELDREDGE		05/08/2017	2346

## Division/Group Assignment List (ICS 204 WF)

<b>1. Incident Name:</b>		<b>3.</b>	
WEST MIMS		<b>III</b>	<b>NIGHT SHIFT</b>
<b>2. Operational Period:</b> <span style="float: right;"><b>NIIGHT SHIFT 2000-0800</b></span>			
Date/Time From: 05/10/2017 2000      WED	Date/Time To: 05/11/2017 0800      THU		
<b>4. Operations Personnel</b>			
<b>OPERATIONS CHIEF</b>	BILL WOODYARD PETE MYERS	<b>BRANCH DIRECTOR</b>	ROBERT TRINCADO
<b>SAFETY</b>	STEVE SMESTED	<b>DIVISION/GROUP SUPERVISOR</b>	SHANE STURGILL; MICHAEL CACHERO

**7. Special Instructions:**

Medical Emergency Channel: Command  
 ETA for Ambulance to Scene:  
 Ground: 15 mins  
 Approved Helispot: POGO Helibase  
 Lat: N 30 44.26  
 Long: W 82 07.69

8. Division/Group Communication Summary						
Function	Channel	RX Frequency N/W	RX Tone/NAC	TX Frequency N/W	TX Tone/NAC	Mode
COMMAND	3	159.120		151.370	82.5	A
COMMAND	4	169.2000N	NONE	169.2000N	NONE	A
TACTICAL	8	163.7125	CSQ	163.7125	CSQ	A
AIR GUARD	16	168.6250	NONE	168.6250	110.9	A

<b>9. Prepared By (Resource Unit Leader)</b>	<b>Approved By (Planning Section Chief)</b>	<b>Date</b>	<b>Time</b>
DONNA THOMAS	BRIAN ELDREDGE	05/08/2017	2346

## Division/Group Assignment List (ICS 204 WF)

<b>1. Incident Name:</b>			<b>3.</b>			
WEST MIMS			<b>I &amp; III</b>		<b>ROAD MAINTENANCE</b>	
<b>2. Operational Period:</b> DAY SHIFT 0830-2030						
Date/Time From: 05/10/2017 0830 WED		Date/Time To: 05/10/2017 2030 WED				
<b>4. Operations Personnel</b>						
<b>OPERATIONS CHIEF</b>		VICTA EDGE, JIM DURRWACHTER L. SMITH (T), S. BOWMAN (T)		<b>BRANCH DIRECTOR</b>		
<b>THSP ROADS</b>		MIKE JOHNSON		<b>AIR ATTACK SUPERVISOR</b>		
<b>5. Resources Assigned this Period</b>						
Strike Team / Task Force / Resource Designator		LWD	Leader	Number Persons	Drop Off PT./Time	Pick Up PT./Time
GRADER - R.O.T. RANCH CONSTRUCTION E-234		05/20	ROBBY WORRELL	1	10/1000	10/2000
HEQB O-290		05/16	WESTON VANDENABEELE	1	10/1000	10/2000
HEQB - O-308		05/16	CHARLES DAVIS	1	10/1000	10/2000
GRADER - WILDLANDS FIRE SERVICE INC - 6198TE E-136		05/22	CARSON SWEENEY	1	10/1000	10/2000
ROAD GRADER - T1 - TIPTON & YOUNG CONSTRUCTION COMPANY E-419		05/20		1	10/1000	10/2000
<b>6. Control Operations/Work Assignments:</b>						
<b>Purpose:</b> To keep roads accessible for access to fire perimeter						
<b>Task:</b> Assess single lane bridges and culverts for safety and maintenance needs. Provide adequate signage for traffic safety. All DIVS to assess Rd maintenance needs for OSC prioritization. OSC to give list of priority road needs to road maintenance leader / boss/						
<b>End State:</b> Access Roads are in a safe travel worthy condition for suppression activities coordinated with private landowners as appropriate.						
<b>7. Special Instructions:</b>						
<b>8. Division/Group Communication Summary</b>						
Function	Channel	RX Frequency N/W	RX Tone/NAC	TX Frequency N/W	TX Tone/NAC	Mode
AIR TO GROUND	4	169.2000N	NONE	169.2000N	NONE	A
COMMAND	5	159.465	CSQ	151.1450	123.0	A
TRAVEL	6	159.390	CSQ	159.3900	156.7	A
TACTICAL	7	154.3025	CSQ	154.3025	156.7	A
<b>9. Prepared By (Resource Unit Leader)</b>			<b>Approved By (Planning Section Chief)</b>		<b>Date</b>	<b>Time</b>
DONNA THOMAS			BRIAN ELDREDGE		05/08/2017	2346

## Division/Group Assignment List (ICS 204 WF)

<b>1. Incident Name:</b>				<b>3.</b>			
WEST MIMS				<b>Branch:</b>		<b>Division/Group:</b>	
<b>2. Operational Period:</b> DAY SHIFT 0830-2030				<b>IV</b>		<b>A</b>	
Date/Time From: 05/10/2017 0830 WED		Date/Time To: 05/10/2017 2030 WED					
<b>4. Operations Personnel</b>							
<b>PLANNING OPERATIONS CHIEF</b>		STEVE WEAVER JEREMY BRAND (T)		<b>OPERATIONS CHIEF</b>		VICTA EDGE, JIM DURRWACHTER L. SMITH (T), S. BOWMAN (T)	
<b>BRANCH DIRECTOR</b>		STEVE MILLER		<b>DIVISION/GROUP SUPERVISOR</b>		JAMES ROURKES	
<b>AIR OPS BRANCH DIRECTOR</b>		TIM FAUST		<b>SAFETY</b>		TOMMY HAWKINS	
<b>5. Resources Assigned this Period</b>							
Strike Team / Task Force / Resource Designator		LWD	Leader	Number Persons	Drop Off PT./Time	Pick Up PT./Time	
CREW - T1 - ASHEVILLE HOTSHOTS C-8		05/10	MIKE HONEYCUTT	18	DP#2/1000	DP#2/2000	
CREW T1 - PIKE IHC C-9		05/21	JOHN ALLBRIGHT	20	DP#2/1000	DP#2/2000	
MODULE O-311		05/18	RONALD ESQUIBEL	10	DP#2/1000	DP#2/2000	
TFLD O-197		05/12	ERIK M JOHNSON	1	DP#2/1000	DP#2/2000	
ENG3 - WEST METRO - BRUSH 39 E-277		05/22	BRADLEY NELSON	4	DP#2/1000	DP#2/2000	
ENG3 - DEER MOUNTAIN FPD - ENGINE 12 E-280		05/15	JOSEPH CRAIG WATTS	3	DP#2/1000	DP#2/2000	
ENG6 - KNF - FSD3 - 631 E-285		05/17	EDWIN FARRAND	5	DP#2/1000	DP#2/2000	
ENG6 - TGF FORESTRY AND FIRE, INC. - C94783 - E E-287		05/23	JASON SARTIN	3	DP#2/1000	DP#2/2000	
WTS2 - SUPPORT TIPTON & YOUNG CONSTRUCT E-347		05/16	JIM VICK	1	DP#2/1000	DP#2/2000	
TFLD - O-256		05/14	ANDREW PASCARELLA, JASON GILLIS (T)	1	DP#2/1000	DP#2/2000	
ENG6 MURRAY 86 E-61		05/12	KEVIN E CLINE	2	DP#2/1000	DP#2/2000	
ENG6 LUMPKIN 86 E-40		05/12	PAYTON TURNER	2	DP#2/1000	DP#2/2000	
ENG6 - 6171 E-77		05/22	MARK CLAY	3	DP#2/1000	DP#2/2000	
ENG6 FRANKLIN 86 E-59		05/12	RUSTY CARROLL	2	DP#2/1000	DP#2/2000	
ENG6 CHATTOOGA 86 E-60		05/12	TONY KEENE	2	DP#2/1000	DP#2/2000	
<b>8. Division/Group Communication Summary</b>							
Function	Channel	RX Frequency N/W	RX Tone/NAC	TX Frequency N/W	TX Tone/NAC	Mode	
AIR TO GROUND	4	169.2000N	NONE	169.2000N	NONE	A	
COMMAND	5	159.465	CSQ	151.1450	123.0	A	
TRAVEL	6	159.390	CSQ	159.3900	156.7	A	
TACTICAL	7	154.3025	CSQ	154.3025	156.7	A	
AIR TO GROUND	14	166.675	CSQ	166.6750	CSQ	A	
AIR TO GROUND	15	169.1500	CSQ	169.1500	CSQ	A	
AIR GUARD	16	168.6250	NONE	168.6250	110.9	A	
<b>9. Prepared By (Resource Unit Leader)</b>			<b>Approved By (Planning Section Chief)</b>			<b>Date</b>	<b>Time</b>
DONNA THOMAS			BRIAN ELDREDGE			05/08/2017	2346

## Division/Group Assignment List (ICS 204 WF)

<b>1. Incident Name:</b>				<b>3.</b>			
WEST MIMS				<b>IV</b>		<b>A</b>	
<b>2. Operational Period:</b> DAY SHIFT 0830-2030							
Date/Time From: 05/10/2017 0830 WED		Date/Time To: 05/10/2017 2030 WED					
<b>4. Operations Personnel</b>							
<b>PLANNING OPERATIONS CHIEF</b>		STEVE WEAVER JEREMY BRAND (T)		<b>OPERATIONS CHIEF</b>		VICTA EDGE, JIM DURRWACHTER L. SMITH (T), S. BOWMAN (T)	
<b>BRANCH DIRECTOR</b>		STEVE MILLER		<b>DIVISION/GROUP SUPERVISOR</b>		JAMES ROURKES	
<b>AIR OPS BRANCH DIRECTOR</b>		TIM FAUST		<b>SAFETY</b>		TOMMY HAWKINS	
<b>5. Resources Assigned this Period</b>							
Strike Team / Task Force / Resource Designator		LWD	Leader	Number Persons	Drop Off PT./Time	Pick Up PT./Time	
ENG6-E631 E-56		05/10	KENDALL SLOAN	3	DP#2/1000	DP#2/2000	
ENG6 - WILLIAMS WILDLAND FIRE SERVICES, LLC - C E-143		05/17	MICHAEL MCNAUGHTON	3	DP#2/1000	DP#2/2000	
STEQ O-200		05/23	JAMES DONNY REWIS	1	DP#2/1000	DP#2/2000	
TPL3 JEFF DAVIS 71 E-289		05/23	DAVID REWIS	1	DP#2/1000	DP#2/2000	
TPL2 COFFEE 73 E-290		05/23	HANK JOINER	1	DP#2/1000	DP#2/2000	
TPL2 PIERCE 70 E-291		05/23	JIM J DURRANCE	1	DP#2/1000	DP#2/2000	
STEQ O-357		05/21	JASON ODOM	1	DP#2/1000	DP#2/2000	
STEQ O-251		05/13	R.T. LUMPKIN	1	DP#2/1000	DP#2/2000	
STEN O-327		05/19	LARRY BLYTHE	1	DP#2/1000	DP#2/2000	
HEQB O-275		05/14	CHARLES DANIELS	1	DP#2/1000	DP#2/2000	
STEN O-358		05/21	HANS RUDOLF	1	DP#2/1000	DP#2/2000	
TPL4 MARION 70 -GFC3284 E-82		05/11	CHRIS DUNN	1			
TPL4 CRAWFORD 71 - GFC1455 E-84		05/11	BRANDON JONES	1			
TPL4 1326 E-343		05/12	DOUG REDDING	1			
WT - STRICKLANDS TRACTOR & SUPPLY E-272		05/13	LUCIUS CORBITT	1			
EMPF E-374 6 602-376-9812		05/16	PAUL PUGH	1	DP#2/1000	DP#2/2000	
<b>8. Division/Group Communication Summary</b>							
Function	Channel	RX Frequency N/W	RX Tone/NAC	TX Frequency N/W	TX Tone/NAC	Mode	
AIR TO GROUND	4	169.2000N	NONE	169.2000N	NONE	A	
COMMAND	5	159.465	CSQ	151.1450	123.0	A	
TRAVEL	6	159.390	CSQ	159.3900	156.7	A	
TACTICAL	7	154.3025	CSQ	154.3025	156.7	A	
AIR TO GROUND	14	166.675	CSQ	166.6750	CSQ	A	
AIR TO GROUND	15	169.1500	CSQ	169.1500	CSQ	A	
AIR GUARD	16	168.6250	NONE	168.6250	110.9	A	
<b>9. Prepared By (Resource Unit Leader)</b>			<b>Approved By (Planning Section Chief)</b>			<b>Date</b>	<b>Time</b>
DONNA THOMAS			BRIAN ELDREDGE			05/08/2017	2346

## Division/Group Assignment List (ICS 204 WF)

<b>1. Incident Name:</b>			<b>3.</b>			
WEST MIMS			<b>IV</b>		<b>A</b>	
<b>2. Operational Period:</b> DAY SHIFT 0830-2030						
Date/Time From: 05/10/2017 0830 WED		Date/Time To: 05/10/2017 2030 WED				
<b>4. Operations Personnel</b>						
<b>PLANNING OPERATIONS CHIEF</b>		STEVE WEAVER JEREMY BRAND (T)		<b>OPERATIONS CHIEF</b>		VICTA EDGE, JIM DURRWACHTER L. SMITH (T), S. BOWMAN (T)
<b>BRANCH DIRECTOR</b>		STEVE MILLER		<b>DIVISION/GROUP SUPERVISOR</b>		JAMES ROURKES
<b>AIR OPS BRANCH DIRECTOR</b>		TIM FAUST		<b>SAFETY</b>		TOMMY HAWKINS
<b>5. Resources Assigned this Period</b>						
Strike Team / Task Force / Resource Designator		LWD	Leader	Number Persons	Drop Off PT./Time	Pick Up PT./Time
SOF2 O-335		05/19	LARRY CONNELL	1	DP#2/1000	DP#2/2000
<b>6. Control Operations/Work Assignments:</b>						
<p><b>Purpose:</b> Keep fire North of FL 2 and east of North Prong St. Marys River</p> <p><b>Task:</b> Patrol and mop up within 50 ft of fire perimeter. Respond to any new starts within Div. Determine and report contained line to Planning OSC1.</p> <p><b>End State:</b> Confine fire perimeter to reduce threats and minimize damage to private timberlands and resources values at risk</p>						
<b>7. Special Instructions:</b>						
<p>Ensure LCES are in place before operations begin &amp; stay hydrated. Drive defensively and with lights on at all times. Identify escape routes. Bridge near DP 9 restricted to pickups - No engines. Bridge on swamp perimeter road just east of first Branch has steep drop offs - 1 lane travel - watch for barricades.</p> <p>DIVS Chad Williamson STEQ with 3 T2 Tractor Plow STEQ with 4 T3 Tractor Plow</p> <p>2 D8 KG Bladed Dozers Rolling Land Clearing (GFC Contract) - reporting to St. George at 1100 with transport and support vehicle.</p> <p>Medical Emergency Channel: Command ETA for Ambulance to Scene: Air: 10 mins</p>						
<b>8. Division/Group Communication Summary</b>						
Function	Channel	RX Frequency N/W	RX Tone/NAC	TX Frequency N/W	TX Tone/NAC	Mode
AIR TO GROUND	4	169.2000N	NONE	169.2000N	NONE	A
COMMAND	5	159.465	CSQ	151.1450	123.0	A
TRAVEL	6	159.390	CSQ	159.3900	156.7	A
TACTICAL	7	154.3025	CSQ	154.3025	156.7	A
AIR TO GROUND	14	166.675	CSQ	166.6750	CSQ	A
AIR TO GROUND	15	169.1500	CSQ	169.1500	CSQ	A
AIR GUARD	16	168.6250	NONE	168.6250	110.9	A
<b>9. Prepared By (Resource Unit Leader)</b>			<b>Approved By (Planning Section Chief)</b>		<b>Date</b>	<b>Time</b>
DONNA THOMAS			BRIAN ELDREDGE		05/08/2017	2346

## Division/Group Assignment List (ICS 204 WF)

<b>1. Incident Name:</b>			<b>3.</b>			
WEST MIMS			<b>IV</b>	<b>A</b>		
<b>2. Operational Period:</b> DAY SHIFT 0830-2030						
Date/Time From:	05/10/2017 0830	WED	Date/Time To:	05/10/2017 2030	WED	
<b>4. Operations Personnel</b>						
<b>PLANNING OPERATIONS CHIEF</b>	STEVE WEAVER JEREMY BRAND (T)		<b>OPERATIONS CHIEF</b>	VICTA EDGE, JIM DURRWACHTER L. SMITH (T), S. BOWMAN (T)		
<b>BRANCH DIRECTOR</b>	STEVE MILLER		<b>DIVISION/GROUP SUPERVISOR</b>	JAMES ROURKES		
<b>AIR OPS BRANCH DIRECTOR</b>	TIM FAUST		<b>SAFETY</b>	TOMMY HAWKINS		
<b>7. Special Instructions:</b>						
<p>Ground: 15 mins                  Approved Helispot: Drop Point 1                  Lat: N 30 30.929                  Long: W 82 14.174  <b>Primary</b> - Ambulance is ground contact with air ambulance  <b>Secondary</b> - IWI- IC or approved person will use channel 16 (Air Guard) for ground contact with air ambulance</p>						
<b>8. Division/Group Communication Summary</b>						
Function	Channel	RX Frequency N/W	RX Tone/NAC	TX Frequency N/W	TX Tone/NAC	Mode
AIR TO GROUND	4	169.2000N	NONE	169.2000N	NONE	A
COMMAND	5	159.465	CSQ	151.1450	123.0	A
TRAVEL	6	159.390	CSQ	159.3900	156.7	A
TACTICAL	7	154.3025	CSQ	154.3025	156.7	A
AIR TO GROUND	14	166.675	CSQ	166.6750	CSQ	A
AIR TO GROUND	15	169.1500	CSQ	169.1500	CSQ	A
AIR GUARD	16	168.6250	NONE	168.6250	110.9	A
<b>9. Prepared By (Resource Unit Leader)</b>			<b>Approved By (Planning Section Chief)</b>		<b>Date</b>	<b>Time</b>
DONNA THOMAS			BRIAN ELDREDGE		05/08/2017	2346



## Division/Group Assignment List (ICS 204 WF)

<b>1. Incident Name:</b>			<b>3.</b>			
WEST MIMS			<b>Branch:</b>		<b>Division/Group:</b>	
<b>2. Operational Period:</b> DAY SHIFT 0830-2030			<b>IV</b>		<b>Z</b>	
Date/Time From: 05/10/2017 0830 WED		Date/Time To: 05/10/2017 2030 WED				
<b>4. Operations Personnel</b>						
<b>PLANNING OPERATIONS CHIEF</b>		STEVE WEAVER JEREMY BRAND (T)		<b>OPERATIONS CHIEF</b>		VICTA EDGE; JIM DURRWACHTER L. SMITH (T) ; S. BOWMAN (T);
<b>BRANCH DIRECTOR</b>		STEVE MILLER		<b>DIVISION/GROUP SUPERVISOR</b>		TRENT INGRAM
<b>AIR ATTACK SUPERVISOR</b>		TIMOTHY FAUST		<b>SAFETY</b>		TOMMY HAWKINS
<b>5. Resources Assigned this Period</b>						
Strike Team / Task Force / Resource Designator		LWD	Leader	Number Persons	Drop Off PT./Time	Pick Up PT./Time
STEN O-354		05/20	MARTIN CASSELLIUS	1	40/1000	40/2000
ENG6 - NC-NCS - PJ-9126 E-455		05/21	ASHLEY KING	2	40/1000	40/2000
ENG6 - NC-NCS - PJ-9244 E-485		05/21	JASON O'NEAL	2	40/1000	40/2000
HEQB O-356		05/20	LANDON CHASE BASS	1	40/1000	40/2000
STEQ O-343		05/20	AARON LEE GAY	1	40/1000	40/2000
TFLD O-350		05/20	NATHANIEL TODD NIGHTINGALE	1	40/1000	40/2000
TFLD O-351		05/20	MICHAEL SEAN STANAWAY	1	40/1000	40/2000
TPL3 - WILDLANDS FIRE SRVC INC - 99744 E-465		05/21	NIC COOKSEY	2	40/1000	40/2000
ENG6 - REDBIRD E6171 E-447		05/21	RUPERT NOWLIN	2	40/1000	40/2000
ENG6 - NC-NCS - PP-7115 E-456		05/21	ROBERT WHITE	2	40/1000	40/2000
ENG6 - OLF - E-692 E-482		05/22	LYNDSEY KUPFER	4	40/1000	40/2000
ENG6 - NC-NCS - PJ-7956 E-484		05/21	JOSEPH BRANDON WEBB	2	40/1000	40/2000
ENGINE - T6 - NC-NCS - PJ-9218 E-486		05/21	JOHN KESSLER	2	40/1000	40/2000
STEQ O-357		05/21	JASON ODOM	1		
TPL3 - GFC3288 E-367		05/16	ROB MORE	1		
TPL3 - GFC3234 E-368		05/16	BRANDON DAVIS	1		
TPL5 - GFC3219 E-369		05/16	RUSSELL FOWLER	1		
<b>8. Division/Group Communication Summary</b>						
Function	Channel	RX Frequency N/W	RX Tone/NAC	TX Frequency N/W	TX Tone/NAC	Mode
AIR TO GROUND	4	169.2000N	NONE	169.2000N	NONE	A
COMMAND	5	159.465	CSQ	151.1450	123.0	A
TACTICAL	11	163.100	CSQ	163.1000	CSQ	A
AIR TO GROUND	14	166.675	CSQ	166.6750	CSQ	A
AIR TO GROUND	15	169.1500	CSQ	169.1500	CSQ	A
AIR GUARD	16	168.6250	NONE	168.6250	110.9	A
<b>9. Prepared By (Resource Unit Leader)</b>			<b>Approved By (Planning Section Chief)</b>		<b>Date</b>	<b>Time</b>
MISSY FORDER			BRIAN ELDREDGE		05/08/2017	2346

## Division/Group Assignment List (ICS 204 WF)

<b>1. Incident Name:</b>			<b>3.</b>			
WEST MIMS			<b>IV</b>		<b>Z</b>	
<b>2. Operational Period:</b> DAY SHIFT 0830-2030						
Date/Time From: 05/10/2017 0830 WED		Date/Time To: 05/10/2017 2030 WED				
<b>4. Operations Personnel</b>						
<b>PLANNING OPERATIONS CHIEF</b>		STEVE WEAVER JEREMY BRAND (T)		<b>OPERATIONS CHIEF</b>		VICTA EDGE; JIM DURRWACHTER L. SMITH (T) ; S. BOWMAN (T);
<b>BRANCH DIRECTOR</b>		STEVE MILLER		<b>DIVISION/GROUP SUPERVISOR</b>		TRENT INGRAM
<b>AIR ATTACK SUPERVISOR</b>		TIMOTHY FAUST		<b>SAFETY</b>		TOMMY HAWKINS
<b>7. Special Instructions:</b>						
<p>2 - TPL Okie - O/H Donnie Harris DIVS                  1 - 1050 KG - with operator GFC                  1 - Appalachia 750 (Lease) with operator                  DIVS Blair Joiner                  STEQ with 3-T2 Tractor Plow                  STEQ (Weaver) with 4-T3 Tractor Plow</p>						
<b>8. Division/Group Communication Summary</b>						
Function	Channel	RX Frequency N/W	RX Tone/NAC	TX Frequency N/W	TX Tone/NAC	Mode
AIR TO GROUND	4	169.2000N	NONE	169.2000N	NONE	A
COMMAND	5	159.465	CSQ	151.1450	123.0	A
TACTICAL	11	163.100	CSQ	163.1000	CSQ	A
AIR TO GROUND	14	166.675	CSQ	166.6750	CSQ	A
AIR TO GROUND	15	169.1500	CSQ	169.1500	CSQ	A
AIR GUARD	16	168.6250	NONE	168.6250	110.9	A
<b>9. Prepared By (Resource Unit Leader)</b>			<b>Approved By (Planning Section Chief)</b>		<b>Date</b>	<b>Time</b>
MISSY FORDER			BRIAN ELDREDGE		05/08/2017	2346

## Division/Group Assignment List (ICS 204 WF)

<b>1. Incident Name:</b>			<b>3.</b>				
WEST MIMS			<b>IV</b>	<b>Branch:</b>		<b>Division/Group:</b>	
<b>2. Operational Period:</b> DAY SHIFT 0830-2030				<b>STRUCTURE PROTECTION</b>			
Date/Time From: 05/10/2017 0830	WED	Date/Time To: 05/10/2017 2030				WED	
<b>4. Operations Personnel</b>							
<b>PLANNING OPERATIONS CHIEF</b>		STEVE WEAVER JEREMY BRAND (T)		<b>OPERATIONS CHIEF</b>		VICTA EDGE, JIM DURRWACHTER L. SMITH (T) S.BOWMAN (T)	
<b>BRANCH DIRECTOR</b>		STEVEN MILLER		<b>STRUCTURE PROTECTION</b>		CRAIG ROBERTSON; SUNBEAR VIERRA	
<b>SAFETY</b>		CHARLIE PATTERSON (T)					
<b>5. Resources Assigned this Period</b>							
Strike Team / Task Force / Resource Designator		LWD	Leader	Number Persons	Drop Off PT./Time	Pick Up PT./Time	
STEN O-327		05/19	LARRY BLYTHE	1			
ENG6 - OK-CNA #0861 E-411		05/19	RUBEN CHUCKLUCK	3			
ENG6 - OK-OSA #0661 E-412		05/19	ROSS WALKER	3			
ENG6 OK-WEA #1061 E-413		05/19	ALAN PRATT	3			
ENG6 NC-ECA #5261 E-414		05/19	CHARLES PARRISH	3			
ENG6 - NC-ECA #5262 E-415		05/19	MARIO ESQUIVEL	3			
ENG6 - E483		05/20	JUSTIN M ERICKSON	4			
ENG3 UNIT #9830 - LUBBOCK TFS E-121		05/18	JEFF WEBB	5			
ENG3 - UNIT #9530 - FT STOCKTON TFS E-122		05/17	JARED BURCHETT	5			
ENG3 E-422		05/21	BRENT KISSICK				
ENG3 E-423		05/20	DUSTIN LOPEZ				
DOZ3 E-449		05/19	STEVE BATTLE	1			
HEQB O-275		05/14	CHARLES DANIELS	1			
MAST ROT RANCH E-74		05/15	PARISH	1			
JD 6415 - ROT RANCH E-73		05/13	DARYL	1			
TPL3 - ORANGE SPRINGS CONSTRUCTION, INC - E-481		05/19	LESLIE JETER	2			
LOWBOY - ROT RANCH E-75		05/13					
<b>8. Division/Group Communication Summary</b>							
Function	Channel	RX Frequency N/W	RX Tone/NAC	TX Frequency N/W	TX Tone/NAC	Mode	
COMMAND	4	169.2000N	NONE	169.2000N	NONE	A	
COMMAND	5	159.465	CSQ	151.1450	123.0	A	
TACTICAL	13	159.4125	CSQ	159.4125	CSQ	A	
AIR TO GROUND	14	166.675	CSQ	166.6750	CSQ	A	
AIR TO GROUND	15	169.1500	CSQ	169.1500	CSQ	A	
AIR GUARD	16	168.6250	NONE	168.6250	110.9	A	
<b>9. Prepared By (Resource Unit Leader)</b>			<b>Approved By (Planning Section Chief)</b>		<b>Date</b>	<b>Time</b>	
DONNA THOMAS			BRIAN ELDREDGE		05/08/2017	2346	

## Division/Group Assignment List (ICS 204 WF)

<b>1. Incident Name:</b>			<b>3.</b>				
WEST MIMS			<b>IV</b>	<b>Branch:</b>		<b>Division/Group:</b>	
<b>2. Operational Period:</b> DAY SHIFT 0830-2030				<b>STRUCTURE PROTECTION</b>			
Date/Time From: 05/10/2017 0830	WED	Date/Time To: 05/10/2017 2030				WED	
<b>4. Operations Personnel</b>							
<b>PLANNING OPERATIONS CHIEF</b>		STEVE WEAVER JEREMY BRAND (T)		<b>OPERATIONS CHIEF</b>		VICTA EDGE, JIM DURRWACHTER L. SMITH (T) S.BOWMAN (T)	
<b>BRANCH DIRECTOR</b>		STEVEN MILLER		<b>STRUCTURE PROTECTION</b>		CRAIG ROBERTSON; SUNBEAR VIERRA	
<b>SAFETY</b>		CHARLIE PATTERSON (T)					
<b>5. Resources Assigned this Period</b>							
Strike Team / Task Force / Resource Designator		LWD	Leader	Number Persons	Drop Off PT./Time	Pick Up PT./Time	
FUEL TRUCK		05/13		1			
TFLD O-352		05/19	DENNIS WILSON	1			
SOF2 O-281.59		05/15	CHARLES E PATTERSON (T)	1			
<b>6. Control Operations/Work Assignments:</b>							
Purpose: Ensure timely response to protect human life, property and public and private infrastructure.							
Task: Protect city of St. George residents and private property.							
Affirm contact procedures with Charlton County and Sheriff Dept to assure effective communication in event of or post community evacuation needs.							
Implement structure protection efforts within DIV Z, A and Branch III, DIV O, N and M as needed.							
Coordinate with County EMS to determine special needs for road access.							
End State: Maintain communications with appropriate emergency management and Law Enforcement to protect public.							
Confine fire perimeter to reduce threats to structures, utilities and other values at risk							
<b>7. Special Instructions:</b>							
Coordinate with Charlton County Structure Group.							
Jesse Jordon 912-816-6063 and located at St George Elementary School.							
<b>8. Division/Group Communication Summary</b>							
Function	Channel	RX Frequency N/W	RX Tone/NAC	TX Frequency N/W	TX Tone/NAC	Mode	
COMMAND	4	169.2000N	NONE	169.2000N	NONE	A	
COMMAND	5	159.465	CSQ	151.1450	123.0	A	
TACTICAL	13	159.4125	CSQ	159.4125	CSQ	A	
AIR TO GROUND	14	166.675	CSQ	166.6750	CSQ	A	
AIR TO GROUND	15	169.1500	CSQ	169.1500	CSQ	A	
AIR GUARD	16	168.6250	NONE	168.6250	110.9	A	
<b>9. Prepared By (Resource Unit Leader)</b>			<b>Approved By (Planning Section Chief)</b>			<b>Date</b>	<b>Time</b>
DONNA THOMAS			BRIAN ELDREDGE			05/08/2017	2346

## Division/Group Assignment List (ICS 204 WF)

<b>1. Incident Name:</b>				<b>3.</b>			
WEST MIMS				<b>IV</b>		<b>CONTINGENCY</b>	
<b>2. Operational Period:</b> DAY SHIFT 0830-2030							
Date/Time From: 05/10/2017 0830 WED		Date/Time To: 05/10/2017 2030 WED					
<b>4. Operations Personnel</b>							
<b>PLANNING OPERATIONS CHIEF</b>		STEVE WEAVER JEREMY BRAND (T)		<b>OPERATIONS CHIEF</b>		VICTA EDGE, JIM DURRWACHTER L. SMITH (T), S. BOWMAN (T)	
<b>BRANCH DIRECTOR</b>		DARRELL MILLER		<b>DIVISION/GROUP SUPERVISOR</b>		BLAIR JOINER CHAD WILLIAMSON	
<b>AIR ATTACK SUPERVISOR</b>		TIM FAUST		<b>SAFETY</b>		BRAD LIDELL, MIKE COOK TONY RIVERS (T)	
<b>5. Resources Assigned this Period</b>							
Strike Team / Task Force / Resource Designator		LWD	Leader	Number Persons	Drop Off PT./Time	Pick Up PT./Time	
STEQ			JAMEY SMITH				
TPL ATKINSON 60/70			HARPER				
TPL BRANTLEY 62/72			EDGY				
TPL CLINCH 62/72			BROWN				
STEQ			BRAD GREGORY				
TPL3							
TPL3							
TPL3							
TPL3							
ENG6 COWETTA 86			EVANS & BUTTS				
ENG6 JONES 86			SAUNDERS & PRESCOTT				
ENG6 MCDUFFIE 86			PEEBLES & ELLSION				
STEQ			TIM CROSBY				
TPL APPLING 62/72			YAWN				
TPL LOWNDES 63/73			STONE				
TPL BACON 61/71			TAYLOR				
STEQ			SMITHERMAN				
TPL GAINESVILLE 50			SMITH				
<b>8. Division/Group Communication Summary</b>							
Function	Channel	RX Frequency N/W	RX Tone/NAC	TX Frequency N/W	TX Tone/NAC	Mode	
AIR TO GROUND	4	169.2000N	NONE	169.2000N	NONE	A	
TRAVEL	6	159.390	CSQ	159.3900	156.7	A	
AIR TO GROUND	14	166.675	CSQ	166.6750	CSQ	A	
AIR TO GROUND	15	169.1500	CSQ	169.1500	CSQ	A	
AIR GUARD	16	168.6250	NONE	168.6250	110.9	A	
<b>9. Prepared By (Resource Unit Leader)</b>			<b>Approved By (Planning Section Chief)</b>			<b>Date</b>	<b>Time</b>

## Division/Group Assignment List (ICS 204 WF)

<b>1. Incident Name:</b>			<b>3.</b>			
WEST MIMS			<b>IV</b>		<b>CONTINGENCY</b>	
<b>2. Operational Period:</b> <b>DAY SHIFT 0830-2030</b>						
Date/Time From: 05/10/2017 0830            WED		Date/Time To: 05/10/2017 2030            WED				
<b>4. Operations Personnel</b>						
<b>PLANNING OPERATIONS CHIEF</b>		STEVE WEAVER JEREMY BRAND (T)		<b>OPERATIONS CHIEF</b>		VICTA EDGE, JIM DURRWACHTER L. SMITH (T), S. BOWMAN (T)
<b>BRANCH DIRECTOR</b>		DARRELL MILLER		<b>DIVISION/GROUP SUPERVISOR</b>		BLAIR JOINER CHAD WILLIAMSON
<b>AIR ATTACK SUPERVISOR</b>		TIM FAUST		<b>SAFETY</b>		BRAD LIDELL, MIKE COOK TONY RIVERS (T)
<b>5. Resources Assigned this Period</b>						
Strike Team / Task Force / Resource Designator		LWD	Leader	Number Persons	Drop Off PT./Time	Pick Up PT./Time
TPL GAINESVILLE 36			DISNEY			
TPL FIELD OPS 36			WILLIAMS			
TPL FIELD OPS 34			DEHOFF			
ENG6 HAMBERSHAM 86			ANDERSON & BROWN			
ENG6 POLK 86			RUMLEY & ROLAND			
ENG6 TATTNAIL 86			BOULINEAU & JONES			
<b>6. Control Operations/Work Assignments:</b>						
Purpose: To provide suppression support for incident						
Task: Resources are ready upon calling for IA or extended attack						
End Shift: Ready support resources available to respond to protect structures, timberland and other resource values at risk.						
<b>7. Special Instructions:</b>						
<b>8. Division/Group Communication Summary</b>						
Function	Channel	RX Frequency N/W	RX Tone/NAC	TX Frequency N/W	TX Tone/NAC	Mode
AIR TO GROUND	4	169.2000N	NONE	169.2000N	NONE	A
TRAVEL	6	159.390	CSQ	159.3900	156.7	A
AIR TO GROUND	14	166.675	CSQ	166.6750	CSQ	A
AIR TO GROUND	15	169.1500	CSQ	169.1500	CSQ	A
AIR GUARD	16	168.6250	NONE	168.6250	110.9	A
<b>9. Prepared By (Resource Unit Leader)</b>			<b>Approved By (Planning Section Chief)</b>		<b>Date</b>	<b>Time</b>

## Division/Group Assignment List (ICS 204 WF)

<b>1. Incident Name:</b>			<b>3.</b>			
WEST MIMS			<b>IV</b>		<b>Division/Group:  NIGHT - A</b>	
<b>2. Operational Period:</b> <b>NIIGHT SHIFT 2000-0800</b>						
Date/Time From: 05/10/2017 2000                      WED		Date/Time To: 05/11/2017 0800                      THU				
<b>4. Operations Personnel</b>						
<b>BRANCH DIRECTOR</b>				<b>OPERATIONS CHIEF</b>		PETER MYERS
<b>SAFETY</b>		JAMES WILLIAMS		<b>DIVISION/GROUP SUPERVISOR</b>		JOHN MOLVE
<b>5. Resources Assigned this Period</b>						
Strike Team / Task Force / Resource Designator		LWD	Leader	Number Persons	Drop Off PT./Time	Pick Up PT./Time
TFLD O-382		05/21	BRIAN GERMAN	1		
ENG6 - OK- #4 E-451		05/22	ANDREW CARR	2		
ENG6 - OK- #1 E-452		05/22	BROCK HILL	2		
ENG6 - OK-OKS SE #72 E-453		05/22	BRADLEY D WALKER	2		
FIRE TRAX LLC - # 610 E-536		05/23	CARLOS GUTIERREZ	3		
STEQ O-375		05/22	DENNIS HUENERGARDT	1		
EMPF E-315		05/17	STEVEN WOLFSTICH	1		
<b>6. Control Operations/Work Assignments:</b>						
<p><b>Purpose: Keep fire North of FL 2 and East of North Prong of St. Mary's River.</b>  <b>Task: Patrol and mop up within 50 ft of fire perimeter.</b>  <b>Respond to any new starts within Div.</b>  <b>Determine and report contained line to Planning OSC1.</b>  <b>End State: Confine fire perimeter to reduce threats and minimize damage to private timberlands and resources values at risk</b></p>						
<b>7. Special Instructions:</b>						
<p>Ensure LCES is in place before operations begin &amp; stay hydrated. Drive defensively and with lights on at all times. Identify escape routes.          Bridge near DP 9 restricted to pickups - No engines. Bridge on swamp perimeter road just east of first Branch has steep drop offs - 1 lane travel - watch for barricades.</p> <p>DIVS Chad Williamson          STEQ with 3 T2 Tractor Plow          STEQ with 4 T3 Tractor Plow</p> <p>Two D8 KG Bladed Dozers Rolling Land Clearing (GFC Contract) - reporting to St. George at 1100 with transport and support vehicle.</p>						
<b>8. Division/Group Communication Summary</b>						
Function	Channel	RX Frequency N/W	RX Tone/NAC	TX Frequency N/W	TX Tone/NAC	Mode
COMMAND	4	169.2000N	NONE	169.2000N	NONE	A
COMMAND	5	159.465	CSQ	151.1450	123.0	A
TRAVEL	6	159.390	CSQ	159.3900	156.7	A
TACTICAL	7	154.3025	CSQ	154.3025	156.7	A
AIR TO GROUND	14	166.675	CSQ	166.6750	CSQ	A
AIR TO GROUND	15	169.1500	CSQ	169.1500	CSQ	A
AIR GUARD	16	168.6250	NONE	168.6250	110.9	A
<b>9. Prepared By (Resource Unit Leader)</b>			<b>Approved By (Planning Section Chief)</b>		<b>Date</b>	<b>Time</b>
DONNA THOMAS			BRIAN ELDREDGE		05/09/2017	2000

## Division/Group Assignment List (ICS 204 WF)

<b>1. Incident Name:</b>			<b>3.</b>			
WEST MIMS			<b>IV</b>		<b>NIGHT - A</b>	
<b>2. Operational Period:</b> NIIGHT SHIFT 2000-0800						
Date/Time From: 05/10/2017 2000      WED		Date/Time To: 05/11/2017 0800      THU				
<b>4. Operations Personnel</b>						
<b>BRANCH DIRECTOR</b>				<b>OPERATIONS CHIEF</b>		PETER MYERS
<b>SAFETY</b>		JAMES WILLIAMS		<b>DIVISION/GROUP SUPERVISOR</b>		JOHN MOLVE
<b>7. Special Instructions:</b>						
<p>Medical Emergency Channel: Command            ETA for Ambulance to Scene:            Ground: 15 mins            Approved Helispot: Drop Point 1            Lat: N 30 30.929            Long: W 82 14.174  <b>Primary</b> - Ambulance is ground contact with air ambulance  <b>Secondary</b> - IWI- IC or approved person will use channel 16 (Air Guard) for ground contact with air ambulance</p>						
<b>8. Division/Group Communication Summary</b>						
Function	Channel	RX Frequency N/W	RX Tone/NAC	TX Frequency N/W	TX Tone/NAC	Mode
COMMAND	4	169.2000N	NONE	169.2000N	NONE	A
COMMAND	5	159.465	CSQ	151.1450	123.0	A
TRAVEL	6	159.390	CSQ	159.3900	156.7	A
TACTICAL	7	154.3025	CSQ	154.3025	156.7	A
AIR TO GROUND	14	166.675	CSQ	166.6750	CSQ	A
AIR TO GROUND	15	169.1500	CSQ	169.1500	CSQ	A
AIR GUARD	16	168.6250	NONE	168.6250	110.9	A
<b>9. Prepared By (Resource Unit Leader)</b>			<b>Approved By (Planning Section Chief)</b>		<b>Date</b>	<b>Time</b>
DONNA THOMAS			BRIAN ELDREDGE		05/09/2017	2000



## Division/Group Assignment List (ICS 204 WF)

<b>1. Incident Name:</b>			<b>3.</b>			
WEST MIMS			<b>Branch:</b>		<b>Division/Group:</b>	
<b>2. Operational Period:</b> DAY SHIFT 0830-2030			<b>IV</b>		<b>Z</b>	
Date/Time From: 05/10/2017 0830 WED		Date/Time To: 05/10/2017 2030 WED				
<b>4. Operations Personnel</b>						
<b>PLANNING OPERATIONS CHIEF</b>		STEVE WEAVER JEREMY BRAND (T)		<b>OPERATIONS CHIEF</b>		VICTA EDGE; JIM DURRWACHTER L. SMITH (T) ; S. BOWMAN (T);
<b>BRANCH DIRECTOR</b>		STEVE MILLER		<b>DIVISION/GROUP SUPERVISOR</b>		TRENT INGRAM
<b>AIR ATTACK SUPERVISOR</b>		TIMOTHY FAUST		<b>SAFETY</b>		TOMMY HAWKINS
<b>5. Resources Assigned this Period</b>						
Strike Team / Task Force / Resource Designator		LWD	Leader	Number Persons	Drop Off PT./Time	Pick Up PT./Time
TPL2 OK-56 E-35		04/20	JEFF SWAIN	1		
TPL4 - GFC3204 E-404		05/16	DAVID COTTLES	1		
TPL4 - GFC3226 E-405		05/16	BRANDON CHAFIN	1		
TPL4 - GFC1467 E-406		05/16	CHARLES WATSON	1		
HEQB (T) O-372		05/19	JOE N BRINSON JR	1		
SOF2 O-386		05/20	IVAN S CUPP	1	40/1000	40/2000
<b>6. Control Operations/Work Assignments:</b>						
Purpose: Keep fire West of Saint Mary's River.						
Task: Prep control lines with dozers to establish or strengthen containment. Coordinate strategic firing with unified ICs. Coordinate with Structure Protection specialist on triage of structures for point protection. Utilize aviation assets to protect human life and property supporting ground assets.						
End State: Contain fire perimeter to minimize damage to both public and private infrastructure and protect resource values at risk.						
<b>7. Special Instructions:</b>						
Medical Emergency Channel: Command ETA for Ambulance to Scene: Air: 7 mins Ground: 15 mins Approved Helispot: POGO Helibase Lat: N 30 44.26 Long: W 82 07.69 <b>Primary</b> - Ambulance is ground contact with air ambulance <b>Secondary</b> - IWI- IC or approved person will use channel 16 (Air Guard) for ground contact with air ambulance						
<b>8. Division/Group Communication Summary</b>						
Function	Channel	RX Frequency N/W	RX Tone/NAC	TX Frequency N/W	TX Tone/NAC	Mode
AIR TO GROUND	4	169.2000N	NONE	169.2000N	NONE	A
COMMAND	5	159.465	CSQ	151.1450	123.0	A
TACTICAL	11	163.100	CSQ	163.1000	CSQ	A
AIR TO GROUND	14	166.675	CSQ	166.6750	CSQ	A
AIR TO GROUND	15	169.1500	CSQ	169.1500	CSQ	A
AIR GUARD	16	168.6250	NONE	168.6250	110.9	A
<b>9. Prepared By (Resource Unit Leader)</b>			<b>Approved By (Planning Section Chief)</b>		<b>Date</b>	<b>Time</b>
MISSY FORDER			BRIAN ELDREDGE		05/08/2017	2346

## Division/Group Assignment List (ICS 204 WF)

<b>1. Incident Name:</b>			<b>3.</b>				
WEST MIMS			<b>IV</b>		<b>NIGHT - Z</b>		
<b>2. Operational Period:</b> <span style="float: right;"><b>NIIGHT SHIFT 2000-0800</b></span>							
Date/Time From: 05/10/2017 2000      WED		Date/Time To: 05/11/2017 0800      THU					
<b>4. Operations Personnel</b>							
<b>BRANCH DIRECTOR</b>				<b>OPERATIONS CHIEF</b>		PETE MYERS	
<b>SAFETY</b>		JAMES WILLIAMS		<b>DIVISION/GROUP SUPERVISOR</b>		BRYCE THOMAS	
<b>5. Resources Assigned this Period</b>							
Strike Team / Task Force / Resource Designator		LWD	Leader		Number Persons	Drop Off PT./Time	Pick Up PT./Time
EMPF E-315		05/17	STEPHEN WOLFSTITCH		1		
<b>6. Control Operations/Work Assignments:</b>							
Purpose: Keep fire West of Saint Mary's River							
Task: Prep control lines with dozers to establish or strengthen containment. Coordinate strategic firing with unified ICs. Coordinate with Structure Protection specialist on triage of structures for point protection.							
End State: Contain fire perimeter to minimize damage to both public and private infrastructure and protect resource values at risk.							
<b>7. Special Instructions:</b>							
Medical Emergency Channel: Command ETA for Ambulance to Scene: Air: 7 mins Ground: 15 mins Approved Helispot: POGO Helibase Lat: N 30 44.26 Long: W 82 07.69 <b>Primary</b> - Ambulance is ground contact with air ambulance <b>Secondary</b> - IWI- IC or approved person will use channel 16 (Air Guard) for ground contact with air ambulance							
2 - TPL Okie - O/H Donnie Harris DIVS 1 - 1050 KG - with operator GFC 1 - Appalachia 750 (Lease) with operator DIVS Blair Joiner STEQ with 3-T2 Tractor Plow STEQ (Weaver) with 4-T3 Tractor Plow							
<b>8. Division/Group Communication Summary</b>							
Function	Channel	RX Frequency N/W	RX Tone/NAC	TX Frequency N/W	TX Tone/NAC	Mode	
COMMAND	4	169.2000N	NONE	169.2000N	NONE	A	
COMMAND	5	159.465	CSQ	151.1450	123.0	A	
TACTICAL	11	163.100	CSQ	163.1000	CSQ	A	
AIR TO GROUND	14	166.675	CSQ	166.6750	CSQ	A	
AIR TO GROUND	15	169.1500	CSQ	169.1500	CSQ	A	
AIR GUARD	16	168.6250N	NONE	168.6250N	110.9	A	
<b>9. Prepared By (Resource Unit Leader)</b>			<b>Approved By (Planning Section Chief)</b>		<b>Date</b>	<b>Time</b>	
DONNA THOMAS			BRIAN ELDREDGE		05/08/2017	2346	

## Division/Group Assignment List (ICS 204 WF)

<b>1. Incident Name:</b>			<b>3.</b>			
WEST MIMS			<b>IV</b>	<b>Branch:</b>		<b>Division/Group:</b>
<b>2. Operational Period:</b> <b>NIIGHT SHIFT 2000-0800</b>				<b>NIGHT - STRUCTURE</b>		
Date/Time From: 05/10/2017 2000      WED		Date/Time To: 05/11/2017 0800      THU				
<b>4. Operations Personnel</b>						
<b>BRANCH DIRECTOR</b>				<b>OPERATIONS CHIEF</b>		PETE MYERS
<b>SAFETY</b>				<b>DIVISION/GROUP SUPERVISOR</b>		HAROLD KIBBE JOHN ALLBRIGHT (T)
<b>5. Resources Assigned this Period</b>						
Strike Team / Task Force / Resource Designator		LWD	Leader	Number Persons	Drop Off PT./Time	Pick Up PT./Time
<b>6. Control Operations/Work Assignments:</b>						
Purpose: Ensure timely response to protect human life, property, and access.						
Task: Protect city of St. George residents and private property. Establish contact procedures with Charlton County and Sheriff Dept to assure effective communication in event of or post community evacuation needs. Implement structure protection efforts within DIV Z, A, Branch III DIV O and N as needed. Coordinate with County EMS to determine special needs for road control access.						
End State: Maintain communications with appropriate emergency management and Law Enforcement to protect public. Confine fire perimeter to reduce threats to structures, utilities and other values at risk						
<b>7. Special Instructions:</b>						
<b>8. Division/Group Communication Summary</b>						
Function	Channel	RX Frequency N/W	RX Tone/NAC	TX Frequency N/W	TX Tone/NAC	Mode
COMMAND	4	169.2000N	NONE	169.2000N	NONE	A
COMMAND	5	159.465	CSQ	151.1450	123.0	A
TACTICAL	13	159.4125	CSQ	159.4125	CSQ	A
AIR TO GROUND	14	166.675	CSQ	166.6750	CSQ	A
AIR TO GROUND	15	169.1500	CSQ	169.1500	CSQ	A
AIR GUARD	16	168.6250N	NONE	168.6250N	110.9	A
<b>9. Prepared By (Resource Unit Leader)</b>			<b>Approved By (Planning Section Chief)</b>		<b>Date</b>	<b>Time</b>
DONNA THOMAS			BRIAN ELDREDGE		05/09/2017	2000

**AIR OPERATIONS SUMMARY (ICS220)**

Prepared by: John Mason

Prepared Date: 5/9/2017

Prepared Time: 18:00

<b>1. INCIDENT NAME:</b> West Mims	<b>2. OPS PERIOD DATE:</b> 5/10/17	<b>START TIME:</b> 0900	<b>END TIME:</b> 2030	<b>SUNRISE:</b> 0637	<b>SUNSET TIME:</b> 2012 (Folkston)
<b>3. REMARKS Safety Notes: Hazards (SEE AND AVOID GENERAL AVIATION TRAFFIC AND AERIAL HAZARDS)</b>  -Maintain clear communications; confirm that drop location is clear; ground personnel state: "Clear to Drop" -Incident Aircraft conduct flight following with Pogo Helibase when ATGS is not up. -Aerial Ignition Group: Helicopter 7HX with PLDO; FIRB, Joe Chastain.  <b>ORDERING/FLIGHT REQUESTS</b> -Request Helicopter water drops through Air Attack -Request aerial ignition through Operations -Request Tankers/Retardant through Air Attack -Requests for Reconnaissance missions must go through Operations for pre-approval			<b>4. READY ALERT AIRCRAFT:</b>  <u>7HX</u>  Call 911 to request LIFEFLIGHT aircraft.		<b>5. TFR:</b> 7/1766; Surface to 3500' MSL; See NOTAM for full description. Frequency 120.8500
<b>E-MAIL AIRCRAFT COSTS DAILY AT END OF SHIFT TO: john_mason@fws.gov</b>					

6. PERSONNEL	NAME	PHONE #	7. FREQUENCIES	AM	FM	8. FIXED-WING- Type/ Make-Model/ N#/ Base
AOBD	Tim Faust  Air Ops Desk	702-271-6055  912-637-5133	A/A - Fixed Wing A/A - Rotor / TFR  A/G (Request) A/G 66 (Primary) A/G 72 (Secondary)	120.3500 120.8500	   169.2000 166.6750 169.1500	AIR ATTACK – ATGS – Mark Nunez / AC690 / N690RA / LCQ 805-975-5227 ATGS(T) – Derek Wheeler 530-355-3274 ATGS – Chris Worrel / Kodiak / N420Q / LCQ 850-447-4597 ATGS(T) – Mike Bot 623-696-8532
ASGS	John Mason	478-951-7319				LEAD – ASM – Bravo xx As assigned
HEB2 - Pogo HEB1 - Lake City HEB1(T) - Lake City	Eric Verdies Nate Alexander Angie Ruble	805-455-5569 406-491-0878 573-241-0604	Deck/TOLC (Pogo) Deck (Lake City)		168.0500 169.1750	TANKERS – As available (T-41) BAE146 / N471NA / LCQ (Off Fridays) (T-1) BAE146 / N473NA / LCQ (Off Sundays) (T-3) BAE146 / N475NA / LCQ (Off Tuesdays) (T-2) BAE146 / N474NA / LCQ (Off Mondays) (T-164) RJ-85A / N374AC / LCQ (Off Thursdays) (T-911) DC-10 / N17085 / CHA
	Pogo Helibase	912-496-4415				
	Lake City Helibase	561-512-6333	Air Guard		168.625 (110.9)	

**9. HELICOPTER** Remarks Box Legend: C=Cargo P=Passengers B=Bucket SN=Snorkel R=Rappel H=Hoist SH=Short Haul ME=Medical Evacuation/ Extraction Exu=Exclusive Use

FAA N#	T Y	MAKE/ MODEL	BASE	START	READY to FLY	REMARKS	FAA N#	T Y	MAKE/ MODEL	BASE	START	READY to FLY	REMARKS
27HX	3	Bell 407	Pogo (3GE1)	0700	0830	P, B Exu	611CK (701)	1	SH-3H / S-61	Lake City (LCQ)	0700	0730	SN Exu
351FW	3	AS350 B-2	Pogo (3GE1)	0700	0830	P, B Exu	612CK (702)	1	SH-3H / S-61	Lake City (LCQ)	0700	0730	SN CWN
471CH	1	CH-47D	Lake City (LCQ)	0700	0730	SN Exu	13FH	1	UH-60A	Lake City (LCQ)	0700	0730	B Exu
161KA	1	K-1200	Lake City (LCQ)	0700	0730	B Exu	137BH	1	S70A-27	Lake City (LCQ)	0700	0730	B *On Loan
699RH	1	K-1200	Lake City (LCQ)	0700	0730	B Exu	472CH	1	CH-47D	Lake City (LCQ)	0700	0730	SN *On Loan

INCIDENT RADIO COMMUNICATIONS PLAN			Incident Name West Mims Fire NIFC Radio-Group 1			Date/Time Prepared 05/09/2017 1700			Operational Period Date/Time 05/10/17 0830 - 05/11/17 0830	
Ch #	Function	Channel Name/Trunked Radio System Talkgroup	Assignment	RX Freq N or W	RX Tone/NAC	TX Freq N or W	Tx Tone/NAC	Mode A, D or M	Remarks	
1	COMMAND	WEST OKEE REP		167.1250N	156.7	163.1500N	156.7	M	STEPHEN FOSTER STATE PARK	
2	COMMAND	S. FOSTER	DIV B, C, D, FL FFS CONTINGENCY	159.1200N	NONE	151.3700N	100.0	A	WEST	
3	COMMAND	CORNELIA	DIV M/N, IA & BRANCH III-NIGHT	159.1200N	NONE	151.3700N	82.5	A	EAST	
4	AIR TO GROUND	AIR TO GRD REQUEST	ALL DIVISIONS	169.2000N	NONE	169.2000N	NONE	A	BY REQUEST ONLY	
5	COMMAND	GFC EDDY	MIMS ICP, DIV A, O, Z, BRANCH I-NIGHT, ROAD MAINT, STRUCTURE, BRANCH IV CONTINGENCY	159.4650N	NONE	151.1450N	123.0	A	WEST MIMS DISPATCH	
6	TRAVEL	GFC TAC 1	FL FFS CONTINGENCY	159.3900N	NONE	159.3900N	156.7	A	GFC MOBILE TO MOBILE	
7	TACTICAL	V FIRE 26	DIV A & ROAD MAINT	154.3025N	NONE	154.3025N	156.7	A		
8	TACTICAL	OSCEOLA PROJECT	DIV O, IA & BRANCH III-NIGHT	163.7125N	NONE	163.7125N	NONE	A		
9	TACTICAL	COMPACT	DIV B	159.2850N	NONE	159.2850N	156.7	A		
10	TACTICAL	REFUGE TAC 1	DIV M/N, BRANCH IV CONTINGENCY	168.3500N	NONE	168.3500N	NONE	A		
11	TACTICAL	REFUGE TAC 2	DIV Z	163.1000N	NONE	163.1000N	NONE	A		
12	TACTICAL	FFS 199	DIV C	159.4425N	NONE	159.4425N	NONE	A		
13	TACTICAL	FFS 200	DIV D, STRUCTURE	159.4125N	NONE	159.4125N	NONE	A		
14	AIR TO GROUND	AIR TO GRD 66	PRIMARY AIR TO GROUND	166.6750N	NONE	166.6750N	NONE	A	AIR/GROUND TACTICAL	
15	AIR TO GROUND	AIR TO GRD 72	SECONDARY AIR TO GROUND	169.1500N	NONE	169.1500N	NONE	A	AIR/GROUND TACTICAL	
16	AIR GUARD	AIR GUARD	ALL DIVISIONS	168.6250N	NONE	168.6250N	110.9	A	EMERGENCY AIRCRAFT COMMS	
Prepared By (Communications Unit) /s/ Jerry W Patrick COML					Incident Location WEST MIMS County: Clinch State: Georgia Latitude 30 34 28N Longitude 082 19 24W					


The convention calls for frequency lists to show four digits after the decimal place, followed by either an "N" or a "W", depending on whether the frequency is narrow or wide band. Mode refers to either "A" or "D" indicating analog or digital (e.g. Project 25) or "M" indicating mixed mode. All channels are shown as if programmed in a control station, mobile or portable radio. Repeater and base stations must be programmed with the Rx and Tx reversed.





## HEALTH AND SAFETY MESSAGE

*“We don’t plan on luck to be safe, we plan on sound risk management and good decisions”....the Red Team*

<b>INCIDENT:</b> West Mims Fire	<b>DATE:</b> Wednesday, May 10, 2017
<b>Major Hazards &amp; Risks:</b> Extreme Fire Behavior, Aviation, Heavy Equipment, Driving	
<p><b>Fire Behavior:</b> <i>A fuels advisory (<a href="https://www.predictiveservices.nifc.gov/fuels_fire-danger/fuels_advisories.htm">https://www.predictiveservices.nifc.gov/fuels_fire-danger/fuels_advisories.htm</a>) was issued for this area in April and conditions have continued to get drier and hotter. Spotting has a high probability today. <b>The fuels advisory recommends wider control lines and indirect tactics</b> because of higher fire intensities and resistance to control. Take time to <b>identify lookouts, communications, escape routes and safety zones</b>. Be prepared to reassess and disengage early.</i></p> <p><b>Aviation:</b> <i>Over 1,714,483 gallons of water and 352,253 gallons of retardant have fallen from the sky over our incident since May 3. <b>Are you staying clear of drops?</b> Those drops have made a big impact on the fire. Don’t let them make an impact on you. If you need a drop, contact Air Attack on Air to Ground Request. “Clear to drop” is what the pilot wants to hear from the ground contact before releasing the load.</i></p> <p><b>Heavy Equipment:</b> <i>Tractor plows are essential on this fire, <b>but tractors need good operators!</b> If you are an operator, take care of your health and don’t injure yourself. If you are not, do all you can to help them get to their assignment and accomplish their mission. Yield the road, save some parking space and provide extra eyes on fire activity.</i></p> <p><b>Driving:</b> <i>Driving is difficult if you are not rested. Seven hours of rest are barely enough if you get it every day. <b>How many hours of sleep have you gotten in the past week?</b> Unfortunately, you can’t store it; every day’s sleep is important to be ready for our work.</i></p>	
<p style="text-align: center;"><b>Watchout</b></p>  <p style="text-align: center;">2. IN COUNTRY NOT SEEN IN DAYLIGHT</p>	<p style="text-align: center;"><b>Night Operations</b></p> <ul style="list-style-type: none"> <li>Do you have extra lights and batteries?</li> <li>Are travel routes clear &amp; will they support your equipment?</li> <li>Do you have good communications with regular check-ins?</li> <li>Are there WUI concerns?</li> <li>Do you have a plan for an emergency?</li> </ul>

*Red Team Safety Officers: Brad, Mike, Tommy, Tony, Larry & Ivan*

## INCIDENT SAFETY ANALYSIS 215a

West Mims Fire - Wednesday, May 10, 2017

8. Location	9. Hazard	6. Control or Abatement Action (Engineering, Administrative, PPE, Avoidance, Education, etc)
ALL	Extreme Fire Behavior	<ul style="list-style-type: none"> <li>~ Share weather observations with all personnel assigned to division.</li> <li>~ Establish LCES.</li> <li>~ Establish "Trigger Points" to withdraw.</li> <li>~ Use "Risk Management" process prior to engaging in suppression actions, refer to page 1, IRPG.</li> <li>~ Review Fuel Advisory for FL and southeastern GA.</li> </ul>
ALL	Helicopter Operations	<ul style="list-style-type: none"> <li>~ Helicopter operations should be used for priority missions.</li> <li>~ Stay clear of all bucket drops when suppression actions are in place and allow 1 minute prior to re-entry.</li> <li>~ Pilots or air supervisor ensure ground resources are clear before bucket drops.</li> <li>~ Monitor A-G communications.</li> <li>~ Follow aviation safety guidelines in IRPG and IHOG.</li> <li>~ Ground resources advise pilot of local power lines and local visibility issues.</li> </ul>
All	Train Traffic	<ul style="list-style-type: none"> <li>~ Observe warning signs when crossing tracks.</li> <li>~ If no warning lights are posted, bring vehicle to a complete stop and check for incoming trains before crossing.</li> <li>~ Use caution when crossing tracks with low vehicles or trailers.</li> <li>~ Contact CSX to ensure awareness to fire resource locations.</li> </ul>
A, B, C, D, O, Z, Contingency, IA	Power Utilities	<ul style="list-style-type: none"> <li>~ Notify all personnel of down electrical lines.</li> <li>~ Refer to the IRPG page 24 for Power Line Safety.</li> <li>~ Always treat downed wires as energized.</li> <li>~ Identify and avoid high tension transmission lines.</li> <li>~ In high winds or areas of dense smoke, avoid areas under power lines.</li> <li>~ Be aware of utility restoration in your work area.</li> </ul>
ALL	Air Operations	<ul style="list-style-type: none"> <li>~ Follow "Aviation Watch-Out Situations" on page 44, IRPG.</li> <li>~ Don't plan on air resources for medical transport or resupply.</li> <li>~ Ensure positive communication with all air resources.</li> <li>~ Ensure communications are established with operators.</li> <li>~ During airtanker operations clear the drop zone before approach of the lead plane.</li> </ul>
All	Structure Protection & HAZMAT	<ul style="list-style-type: none"> <li>~ Review "Wildland Urban Interface" Watch outs, IRPG page 12.</li> <li>~ Use "Structure Assessment" checklist, IRPG pages 13-15.</li> <li>~ Follow "HAZMAT Incident Operations" on pages 34-36 in IRPG.</li> <li>~ Identify and avoid damaged gas service near structures.</li> </ul>
B, C	Logging Operations	<ul style="list-style-type: none"> <li>~ Stay clear of active cutting operations.</li> <li>~ If re-burns occur, stop cutting operations before entering the area.</li> <li>~ Use caution when logging equipment is in the area or traveling on the roads.</li> <li>~ Maintain communication with logging operation during operational period.</li> </ul>



## INCIDENT SAFETY ANALYSIS 215a

ALL & ICPs	Driving & Traffic	<ul style="list-style-type: none"> <li>~ Practice "Defensive Driving" techniques traveling on all roads and city streets.</li> <li>~ Use spotters when backing.</li> <li>~ Honk horn to alert personnel when backing.</li> <li>~ Keep clutter off dash and inside cab.</li> <li>~ Follow Driving LCES (Lights, Chock blocks, Emergency brake, Seat belts.</li> <li>~ Always use headlights.</li> <li>~ Yield to pedestrians and bicycles.</li> <li>~ Observe posted speed limits.</li> <li>~ Use the 3 second rule for following distance when driving.</li> <li>~ Use chock blocks, turn wheels into hill.</li> <li>~ Avoid distractions (eating, cell phones, radio).</li> <li>~ Ensure that windshields are kept clean of dust and bugs.</li> <li>~ Use caution when traveling on roads that are impacted by smoke or dusty conditions.</li> <li>~ When feasible, coordinate travel to and from the hotels to ensure two or more personnel travel together to mitigate long distances.</li> </ul>
ALL	Hazard Trees	<ul style="list-style-type: none"> <li>~ Follow "Hazard Tree Safety" guidelines, IRPG page 22.</li> <li>~ Post lookouts, or use a spotter in mop-up areas with personnel.</li> <li>~ Don't park vehicles or take breaks in high concentrations of hazard trees.</li> <li>~ Establish trigger points for disengagement during high wind events.</li> <li>~ Remember that the hazard zone extends a minimum of 2 1/2 tree heights.</li> </ul>
ALL	Fireline Hazards	<ul style="list-style-type: none"> <li>~ Establish and continue to validate LCES.</li> <li>~ Avoid radiant heat by wearing appropriate PPE correctly.</li> <li>~ Use correct tool for task assigned.</li> <li>~ Follow power line safety protocol as outlined on page 22 in IRPG.</li> <li>~ Flag and isolate all HAZMAT and alert all personnel working in Division.</li> <li>~ Follow WUI recommendations on pages 10-11 in IRPG.</li> </ul>
ALL	Injury & Medical Emergency	<ul style="list-style-type: none"> <li>~ Assist injured employee and provide appropriate medical care.</li> <li>~ Use EMT's on Division for initial care.</li> <li>~ Follow medical protocol as outlined in ICS-206 &amp; IRPG Pgs 99-108</li> </ul>
ALL	Firing Operations & Devices	<ul style="list-style-type: none"> <li>~ Only personnel trained in the use of each device will be authorized to use firing equipment.</li> <li>~ Ensure all personnel are aware of firing operation that may affect them.</li> <li>~ Wear appropriate PPE.</li> <li>~ Ensure aerial/ground ignition plans have been adequately developed and personnel are briefed.</li> </ul>
ALL	Communications	<ul style="list-style-type: none"> <li>~ Maintain communication with aviation resources, and suppression organization.</li> <li>~ Ensure all know frequency and protocol for contacting resources.</li> <li>~ Use clear terminology, ask questions and ensure good understanding, especially with new resources.</li> <li>~ Utilize the ICS 205.</li> <li>~ Utilize human repeaters when working in dead spots.</li> <li>~ Know who you will contact in case of an emergency and practice the IWI protocol and 9 Line</li> </ul>
ALL	Heavy Equipment Operations	<ul style="list-style-type: none"> <li>~ Ensure communications are established with operators.</li> <li>~ Use hand signals if other communications are unavailable.</li> <li>~ Maintain a 50'-100' exclusion area around equipment and increase it to 1 1/2 times tree height when in timber.</li> <li>~ Use a spotter when backing.</li> </ul>
ALL	Night Operations	<ul style="list-style-type: none"> <li>~ Maintain high visibility in work area and wear vest while in roadway.</li> <li>~ Use glow sticks to mark hazards.</li> <li>~ Ensure personnel have a personal light (headlamp) and red strobe to ensure visibility.</li> <li>~ Watch for signs of fatigue.</li> <li>~ Take breaks away from areas of known hazard.</li> </ul>

## INCIDENT SAFETY ANALYSIS 215a

ALL	Indirect Fire line	<ul style="list-style-type: none"> <li>~ Post lookouts, identify escape routes and safety zones (IRPG pg. 6).</li> <li>~ Review "Strategy/Indirect Attack" (IRPG pg. 77).</li> </ul>
A, O, N, M, Z	Urban Interface	<ul style="list-style-type: none"> <li>~ Review "Wildland Urban Interface" Watch Outs, IRPG, page 12.</li> <li>~ Use "Structure Assessment Checklist", IRPG, pages 12-16.</li> <li>~ Follow "Hazmat Incident Operations", IRPG, pages 34-36.</li> </ul>
ALL	Wildlife	<ul style="list-style-type: none"> <li>~ Watch out for wildlife inside fire area and along roadways including bears, alligators, snakes, hogs, and deer.</li> <li>~ Clean up all debris and trash during each operational period.</li> <li>~ Don't feed or harass the animals.</li> </ul>
A, O, N, M, Z	Fog	<ul style="list-style-type: none"> <li>~ Obey posted speed limits at all times.</li> <li>~ If driving in a convoy, maintain a safe distance between vehicles for emergency stops and distance.</li> <li>~ Don't use high beam lights while driving, it can impair the vision of the driver and oncoming traffic.</li> </ul>
ALL	Bees, Ticks, Mosquitoes, Spiders, Chiggers	<ul style="list-style-type: none"> <li>~ Canvas crew members for those with known allergic reactions to stings.</li> <li>~ Ensure crew members have medication pens if needed.</li> <li>~ Perform daily self inspection.</li> <li>~ Use repellent as necessary.</li> <li>~ Advanced Life Support, multi-dose epi and airway protection</li> <li>~ Keep affected area clean and bandaged.</li> <li>~ Be extra careful when eating and/or drinking to avoid stings to mouth and throat.</li> </ul>

# MEDICAL PLAN (ICS 206 WF)

<b>Incident/Project Name</b>			<b>1. Operational Period</b>							
<b>West Mims Fire</b>			Date/Time <b>5/10/2017 0730hrs to 0730 hrs</b>							
<b>2. Ambulance Services</b>										
<b>Name</b>	<b>Complete Address</b>		<b>Phone</b>		<b>Advanced Life Support (ALS)</b>					
Clinch County EMS	1050 Valdosta Highway Homerville GA		911		YES					
Charelston County EMS	321 Georgia Ave. St. George, GA		911		YES					
<b>3. Air Ambulance Services</b>										
<b>Name</b>	<b>Phone</b>		<b>Type of Aircraft &amp; Capability</b>							
Air Methods	888-763-1010		AS 350 With night vision capabilities							
Air Evac	888-269-6006		206 L1+ With Night Vision capability							
Trauma 1	800-223-4878		Bell 407 & EC153 both with night vision capability							
<b>4. Hospitals</b>										
	<b>DD° MM.MMM' N - Lat DD° MM.MMM' W - Long</b>		<b>Travel Time Air Gnd</b>		<b>Phone</b>		<b>Helipad Yes No</b>		<b>Level of Care Facility</b>	
Satilla Regional 410 Darling Ave. Waycross GA 31501	Lat:	N 31° 13.452	15 mins	45 mins	912-283-3030	<input checked="" type="checkbox"/>	<input type="checkbox"/>	Level III		
	Long:	W 82° 20.875								
	VHF:									
Clinch Memorial 1050 Valdosta Hwy Homerville GA 31634	Lat:	N 31° 01.975	20 mins	30 mins	912-487-5211	<input checked="" type="checkbox"/>	<input type="checkbox"/>	Level IV		
	Long:	W 82° 45.850								
	VHF:									
Ed Frazier Hospital 159 N. 3 <sup>rd</sup> St. MacClenny FL 32063	Lat:	N 30° 28.482	15 mins	45 mins	904-259-3151	<input checked="" type="checkbox"/>	<input type="checkbox"/>	Level IV		
	Long:	W 82° 11.896								
	VHF:									
Shands Jacksonville 655 West 8 <sup>th</sup> Str Jacksonville FL 32209	Lat:	N 30° 20.890	45 mins	90 mins	904-383-1015	<input checked="" type="checkbox"/>	<input type="checkbox"/>	Level I Burn Center Level I Trauma Center		
	Long:	W 81° 39.862								
	VHF:									
<b>5. Division   Branch   Group   Area Location Capability</b>										
Division A			Paul Pugh EMPF (602)376-9812							
Division B			Martin Carillo EMPF (619)933-5546							
Division C,D			Gary Allen Ford EMPF (470)532-8807							
Division M,N			Linda Kramer EMPF (616)403-1873							
Division O			Dean Carpenter EMPF with UTV (229)561-4224							
Division Z			Stan Bangs EMPF (602)980-6108							
Night Shift Branch I			Kathy Nemmers EMPF (602)885-3115							
Night Shift Branch I			Michael Koepke EMPF (928)249-0541							
Night Shift Branch IV			Stephen Wolfstich EMPF (520)508-9807							
Night Shift Branch III			Kyle Port EMPF (602)410-6788							
Branch 1 Amb./ 24 hr.			Clinch Co. EMS ( 470)-532-8806							
Branch 3 Amb./24hr.			Golden Isles (912)602-9224							

**IWI IC Responsibilities:**

- Take charge of the scene – inform the Division Supervisor and Communications that you are the IWI IC and establish radio communications (frequencies, channels). Identify the emergency name – Division A medical, Fish Meadows medical, Highway 21 accident.
- Assign or begin patient assessment (9 Line) and first aid. Request additional medical resources on division/branch or across incident. Transmit 9 Line patient information to Communications.
- Determine patient transportation through consultation with line medical personnel and Medical Unit Leader. Consider transportation time, risk to personnel, destination facility and available operational resources. If air transport is chosen, implement the plan for alternative transportation in the event aircraft cannot complete the mission. Order transportation resources through Communications as early as possible.
- Notify Communications as resources arrive and any patient status changes. Names of injured or deceased individuals will not be transmitted on the radio.
- Initiate documentation for future investigation; if a line safety officer is available, assign them to lead documentation. Do not move deceased individuals, gear or personal effects except to accomplish rescue work or protect the safety of others. Obtain written documentation of witnesses. The Unit Log, ICS 214, may be used for the initial documentation, but a subsequent narrative will be required.
- As appropriate, conduct an After Action Review to determine successes, areas to improve and lessons learned.

<b>6. Prepared By (Medical Unit Leader)</b>	<b>7. Date/Time</b>	<b>8. Reviewed By (Safety Officer)</b>	<b>9. Date/Time</b>
Fred Adler MEDL/ Matt Laricos MEDL(T)	5/9/2017	Michael Cook SOF1	5/9/2017



## Your Information Officers

For most of you, you see us mainly at briefings letting you know where to find lost items and get your mail. By the time our primary work starts you are on the firelines, or in areas ready to move to your assignments. So, what is our primary work? Well that can be a long answer, but what it effectively comes to is to tell your story. It is our job to help folks get reliable information on the fire so your story can be told accurately. Because your story is the story of the fire. The fight to protect people, homes and important resources is your story. Folks see you on the roads as you travel to your assignments, but they rarely have the opportunity to see what you are doing to protect them and their communities. We provide that introduction into your “working” world.

**SO, HOW CAN YOU HELP US HELP YOU?** We would very much appreciate getting photos from you.

Help us out with social media:

1. Send us your pictures and videos
2. Tell us your home unit Facebook page, so we can share some of your posts, and tag your unit in some of our posts!

- 
1. Come by the PIO Yurt or see us at Briefings and airdrop pics
  2. Text pics/videos to 252-216-8667
  3. Email pics and videos to [OkeFirePIO@gmail.com](mailto:OkeFirePIO@gmail.com)

**Fire Information** – Phone: 904-452-4627

**Text your photos/videos to 252-216-8667 or email: [okefirepio@gmail.com](mailto:okefirepio@gmail.com)**

Follow Us on Facebook: @Okefenokee National Wildlife Refuge #westmimsfire #okefenokee

Inciweb: <https://inciweb.nwcg.gov/incident/5153/>

## Finance Notes

For **ALL** resources:

- Please turn in CTRs and/or shift tickets **daily**.
- Record all of the meal breaks taken during your operational period, with a minimum of one during each shift. If no meal break is recorded, justification must be included in remarks.
- **Document the reason for Hazard Pay or other differential** (i.e., Environmental Pay) in remarks. The most common reasons for Hazard Pay are:
  - Helicopter ground operations under hovering helicopter (attaching slingloads)
  - Uncontrolled fireline duty (line construction, patrol, mop up, felling, etc).  
*This **does not** include personnel engaged in logistical support, service, and non-suppression activities, e.g., media tours to the fireline, incident personnel driving to the fire to observe activities, drivers delivering tools or personnel.*
  - Limited control flights
- **Document and mitigate excessive shifts:** If you must work more than 16 hours in an operational period, record why in remarks. In succeeding shifts, show that you mitigated the fatigue by taking off one hour for each two that you worked over 16.
- Include your request number (i.e., E-1, O-1, C-1) on CTRs and shift tickets. For shift tickets, put the number in the upper right hand corner.

DEMOB LIST

05/10/2017

E-56.7,8,9,	end of shift	crew swap	ENG6-E631
E-151		(ENG6)	ENG6-PATRICK E-94
E-258		(ENG6)	ENGINE-T6-KY-CGP-WFM2
E-283.1,2,3	end of shift	crew swap	ENG6-AR-OZF-SLY—E-671
E-284		(ENG6)	ENG6-CROSS TIMBERS FIRE
E-321		(PU)	SANDERS GADNR PICKUP 136141
E-323		(PU)	WILCOX GADNR PICKUP 144825
E-324		(PU)	PENUEL GADNR PICKUP 144822
E-483.9,10,11,12	end of shift	crew swap	ENG6-E-483
OVERHEAD			
O-36		(HEB2)	JACOBS, CHARLES R
O-86		(TFLD)	CEDENO, DANIEL
O-139		(RCDM)	STOGNER, HOWARD
O-186		(STEN)	OJEDA, PAT
O-214		(THSP)	WICKMAN, TRENT
O-200		(STEQ)	REWIS, JAMES DONNY
O-201		(STEQ)	DUNCAN, DERRICK W
O-207		(COMT)	FORTENBERRY, ROY
O-226		(EQPM)	JOHNSON MICHAEL A
O-240		(THSP)	SNEAD, JOSHUA
O-281.7		(OSC1)	EDGE, VICTA B
O-292		(LSC2))	BURCHARD, MICHAEL FRANCIS
O-373		(SEC2)	COX, TONY
O-341		(PIO1)	STRAWSER, BONNIE

05/11/2017

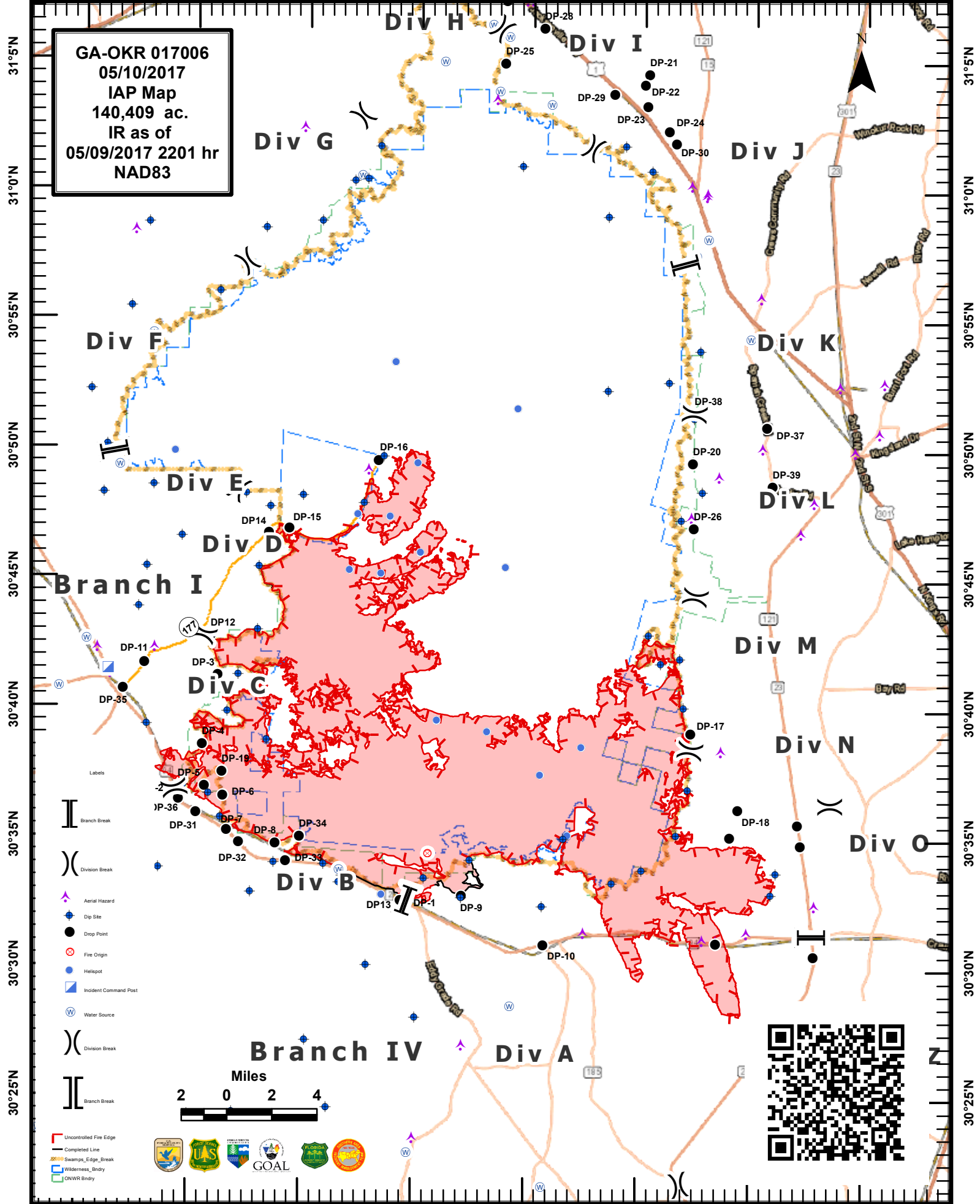
CREWS			
C-8		(HC1)	CREW-T1-ASHEVILLE
C-7		(CC)	CREW-CAMP-PINE KNOT JCC
EQUIPMENT			
E-151		(ENG6)	ENG6-PATRICK-E94
E-258		(ENG6)	ENGINE-T6-KY-CGP-WFM2
E-283		(ENG6)	ENG6-CROSS TIMBERS FIRE
E-483		(ENG6)	ENG6-E483
OVERHEAD			
O-165		(HMGB)	TORREALDAY, JUAN
O-231		(SEC2)	HOBBS, BRIAN
O-228		(RADO)	ZIMMER, MARY J

IF YOU ARE TO FLY HOME PLEASE CONTACT DEMOB AT LEAST 3 DAYS BEFORE FLIGHT TIME.  
 PHONE # 1-912-637-5113 EMAIL [demobwestmimsfire@gmail.com](mailto:demobwestmimsfire@gmail.com)



82°35'W 82°30'W 82°25'W 82°20'W 82°15'W 82°10'W 82°5'W 82°0'W

GA-OKR 017006  
05/10/2017  
IAP Map  
140,409 ac.  
IR as of  
05/09/2017 2201 hr  
NAD83



31°5'N  
31°0'N  
30°55'N  
30°50'N  
30°45'N  
30°40'N  
30°35'N  
30°30'N  
30°25'N

31°5'N  
31°0'N  
30°55'N  
30°50'N  
30°45'N  
30°40'N  
30°35'N  
30°30'N  
30°25'N

82°35'W 82°30'W 82°25'W 82°20'W 82°15'W 82°10'W 82°5'W 82°0'W









## Medical Incident Report- "9 Line"

**FOR ALL MEDICAL EMERGENCIES: IDENTIFY ON SCENE INCIDENT COMMANDER BY NAME AND POSITION AND ANNOUNCE "MEDICAL EMERGENCY" TO INITIATE RESPONSE FROM IMT COMMUNICATIONS/DISPATCH.**

**Use items one through nine to communicate situation to communications/dispatch.**

**1. CONTACT COMMUNICATIONS/DISPATCH**

*Ex: "Communications, Div. Alpha. Stand-by for Priority Medical Incident Report." (If life threatening request designated frequency be cleared for emergency traffic.)*

**2. INCIDENT STATUS: Provide incident summary and command structure.**

<b>Nature of Injury/Illness</b>		<i>Describe the injury (Ex: Broken leg with bleeding)</i>
Incident Name		<i>Geographic Name + "Medical" (Ex: Trout Meadow Medical)</i>
Incident Commander		<i>Name of IC</i>
Patient Care		<i>Name of Care Provider (Ex: EMT Smith)</i>

**3. INITIAL PATIENT ASSESSMENT: Complete this section for each patient. This is only a brief, initial assessment. Provide additional patient info after completing this 9 Line Report.**

Number of Patients:	Male / Female	Age:	Weight:
Conscious? <input type="checkbox"/> YES <input type="checkbox"/> <b>NO = MEDEVAC!</b>			
Breathing? <input type="checkbox"/> YES <input type="checkbox"/> <b>NO = MEDEVAC!</b>			
Mechanism of Injury: <i>What caused the injury?</i>			
Lat/Long (Datum WGS84)			

**4. SEVERITY OF EMERGENCY, TRANSPORT PRIORITY**

SEVERITY	TRANSPORT PRIORITY
<input type="checkbox"/> <b>URGENT-RED Life threatening injury or illness.</b> <i>Ex: Unconscious, difficulty breathing, bleeding severely, 2° – 3° burns more than 4 palm sizes, heat stroke, disoriented.</i>	Ambulance or MEDEVAC helicopter. Evacuation need is <b>IMMEDIATE.</b>
<input type="checkbox"/> <b>PRIORITY-YELLOW Serious Injury or illness.</b> <i>Ex: Significant trauma, not able to walk, 2° – 3° burns not more than 1-2 palm sizes.</i>	Ambulance or consider air transport if at remote location. Evacuation may be <b>DELAYED.</b>
<input type="checkbox"/> <b>ROUTINE-GREEN</b> Not a life threatening injury or illness. <i>Ex: Sprains, strains, minor heat-related illness.</i>	Non-Emergency. Evacuation considered <b>Routine of Convenience.</b>

**5. TRANSPORT PLAN:**

**Air Transport:** (Agency Aircraft Preferred)

<input type="checkbox"/> Helispot	<input type="checkbox"/> Short-haul/Hoist	<input type="checkbox"/> Life Flight	<input type="checkbox"/> Other
<b>Ground Transport:</b>			
<input type="checkbox"/> Self-Extract	<input type="checkbox"/> Carry-Out	<input type="checkbox"/> Ambulance	<input type="checkbox"/> Other

**6. ADDITIONAL RESOURCE/EQUIPMENT NEEDS:**

<input type="checkbox"/> Paramedic/EMT(s)	<input type="checkbox"/> Crew(s)	<input type="checkbox"/> SKED/Backboard/C-Collar
<input type="checkbox"/> Burn Sheet(s)	<input type="checkbox"/> Oxygen	<input type="checkbox"/> Trauma Bag
<input type="checkbox"/> Medication(s)	<input type="checkbox"/> IV/Fluid(s)	<input type="checkbox"/> Cardiac Monitor/AED
<input type="checkbox"/> Other (i.e. splints, rope rescue, wheeled litter)		

**7. COMMUNICATIONS:**

Function	Channel Name/Number	Receive (Rx)	Tone/NAC *	Transmit (Tx)	Tone/NAC *
<i>Ex: Command</i>	<i>Forest Rpt, Ch. 2</i>	<i>168.3250</i>	<i>110.9</i>	<i>171.4325</i>	<i>110.9</i>
COMMAND					
AIR-TO-GRND					
TACTICAL					

\*(NAC for digital radio system)

**8. EVACUATION LOCATION:**

Lat/Long (Datum WGS84) <i>EX: N 40 42.45' x W 123 03.24'</i>	
Patient's ETA to Evacuation Location:	
Helispot/Extraction Size and Hazards:	

**9. CONTINGENCY:**

<b>Considerations:</b> <i>If primary options fail, what actions can be implemented in conjunction with primary evacuation method? Be thinking ahead...</i>	<b>REMEMBER:</b> <b>Confirm ETA's of resources ordered Act according to your level of training Be Alert. Keep Calm. Think Clearly. Act Decisively.</b>
--	--