



# West Mims Fire Incident Action Plan

## Operational Period

Monday, April 24, 2017 0800

to

Tuesday, April 25, 2017 0800

## West Mims Fire Codes

*GA-OKR-017006*

*FWS FFF2000000KYJ70*

*USFS PRKYJ717\_1502 (P)*

GPS Positions to be collected in the following format: Datum: WGS84

Position System: DD MM.mm

IAP QR Code





## INCIDENT MANAGEMENT

T E A M



Letter from GFC Incident Commander:

To: All West Mims Fire Personnel:

As a Georgia Forestry Commission Type 2 Incident Commander, I am committed to a policy of “zero tolerance” of inappropriate behavior during incident operations. Any form of harassment, discriminatory practices, or disrespectful behavior will not be tolerated.

Guidelines on inappropriate behavior both “on Duty” and “off Duty” while assigned are addressed within each agencies policies. Our Team expects all incident personnel to follow established government policies for behavior along with all Illegal drug and alcohol directives.

Our Incident Management Team endorses and supports an attitude of mutual respect for all personnel and the public we serve.

We expect a strong work ethic and an attitude of Safety at all times!  
Sincerely,

/s/ Buck Kline  
Incident Commander  
Georgia Forestry Commission Type 2 Incident Management Team

## INCIDENT OBJECTIVES (ICS 202)

<b>1. Incident Name:</b>	<b>2. Operational Period: DAY SHIFT 0800-2000</b>	
WEST MIMS	Date/Time From: 04/24/2017 0800      MON	Date/Time To: 04/25/2017 0800      TUE
<b>3. Objective(s):</b>		
<ul style="list-style-type: none"> <li>• Provide for the safety and security of incident personnel and public in all incident operations through sound risk assessment and hazard mitigations.</li> <li>• Maintain a positive working relationship with all adjacent landowners, cooperators State and Federal partners. Inform, involve and communicate incident planning and operations with all partners.</li> <li>• Confine all fires that are within the Okefenokee National Wildlife Refuge, inside the Refuge and/or inside the swamp edge break if possible.</li> <li>• In cooperation with local timberland owners, use full suppression strategies and tactics to minimize damage to private timberlands and improvements and to prevent fires outside the Refuge from entering the Refuge.</li> <li>• Assist in management and suppression of additional fires (new starts or breakouts) in the vicinity as approved by Agency Administrators and Unified Incident Commanders.</li> <li>• Protect all cultural and archeological sites and structures within the refuge.</li> <li>• Manage the fires cost-effectively consistent with the values at risk.</li> <li>• Implement structure protection as necessary for at-risk facilities and communities.</li> <li>• Coordinate suppression actions with assigned Refuge Resource Advisors to protect endangered species.</li> <li>• Conduct all operations in a harassment-free environment. There will be a no tolerance atmosphere for harassment, alcohol, or illegal drug use. Everyone will be treated with dignity and respect.</li> </ul>		
<b>4. Operational Period Command Emphasis:</b>		
Keep fire within the Okefenokee Refuge Swamp Edge Break Boundary. Respond to initial attack fires on new starts within: *South of Suwannee Canal *Within the Okefenokee jurisdictional boundaries *Within state properties inside Perimeter Road *North of GA 94/FL 2		
<b>General Situational Awareness:</b>		
Utilize; confine, contain, and point source protection strategies and tactics that commit operations personnel only where and when they can be successful, under conditions where important values at risk are protected with the least exposure.		
<b>5. Site Safety Plan Required?</b> Yes <input type="checkbox"/> No <input checked="" type="checkbox"/>		
<b>Approved Site Safety Plan(s) Located at:</b>		
<b>6. Incident Action Plan</b> (the items checked below are included in this Incident Action Plan):		
<input checked="" type="checkbox"/> ICS 202 <input type="checkbox"/> ICS 207 <input checked="" type="checkbox"/> ICS 203 <input checked="" type="checkbox"/> ICS 208 <input checked="" type="checkbox"/> ICS 204 <input checked="" type="checkbox"/> ICS 220 <input checked="" type="checkbox"/> ICS 205 <input checked="" type="checkbox"/> Map/Chart <input type="checkbox"/> ICS 205A <input checked="" type="checkbox"/> Weather Forecast/Tides/Currents <input checked="" type="checkbox"/> ICS 206	<b>Other Attachments:</b> <input checked="" type="checkbox"/> <u>PIO MESSAGE</u> <input checked="" type="checkbox"/> <u>FINANCE MESSAGE</u> <input checked="" type="checkbox"/> <u>SUPPLY ORDERING</u> <input checked="" type="checkbox"/> <u>TENTATIVE DEMOB</u>	
<b>7. Prepared by:</b> KEITH MURPHY      Position/Title:      RESL	Signature:	
<b>8. Approved by Incident Commander:</b>	Name:	Signature:
<b>ICS 202</b>	<b>IAP Page</b>	Date/Time:

## ORGANIZATION ASSIGNMENT LIST (ICS 203)

<b>1. Incident Name:</b>		<b>2. Operational Period:</b> DAY SHIFT 0800-2000	
WEST MIMS		Date/Time From: 04/24/2017 0800	MON Date/Time To: 04/25/2017 0800 TUE
<b>3. Incident Commander(s) and Command Staff:</b>			
IC/UC	BUCK KLINE; GLEN DAVIS; ROB WOOD; TRENT INGRAM (T)	ORDM	JOHN DUNLAP WILL WALKER (T), MARK EATON (T)
SAFETY OFFICER	RICKY HOLBROOK	RCDM	DENISE CROKER; JESSE ADEAMS (T)
INFORMATION OFFICER	SUSAN GRANBERY; LELAND BASS; HANNAH COWART; BYRON HAIRE	EQPM	KENNETH EDGE JODY PRICE(T), EDDIE HOLGUIN
		RADO	HAMILTON; MENARD; DROZDOWSKI
<b>4. Agency/Organization Representative(s):</b>		<b>7. Operations Section:</b>	
<b>Agency/Organization</b>	<b>Name</b>	OPS SECTION CHIEF	MICHAEL H BRUNSON; SHANNON BOWMAN
GFC PROTECTION	FRANK SORRELLS	FIELD OPS	HEATH MORTON
OKE REF MANAGER	MICHAEL LUSK	<b>Branch</b>	<b>I</b>
OKE REF MANAGER ASSISTANCE	SARA CLARDY	BRANCH DIRECTOR	DARRELL MILLER
GOAL	JIM BARRETT	DIVISION/GROUP	DIV A ALLEN CLAY
FLDOF	JOHN RAULERSON	DIVISION/GROUP	DIV B DOUG BERG WILLIAM C BALCOM (T)
GEMA	DIANE ADAMS	DIVISION/GROUP	DIV C CHRIS ROBERTS
NORFOLK SOUTHERN	CHAD EDWARDS	DIVISION/GROUP	DIV D MARK L BRYANT
GADOT	TREVOR BROWN	DIVISION/GROUP	DIV A/B/C/D NIGHT CHRIS BUCHANAN; RON CALHOUN
<b>5. Planning Section:</b>		DIVISION/GROUP	FIRING GROUP B. JOINER; T. MOBLEY
CHIEF	RHEA COOPER; KEITH MURPHY (T)	DIVISION/GROUP	FL CONT. KEITH OSTEEN
RESOURCES UNIT	JUDY SMITH MARK HARVEY	DIVISION/GROUP	AFUE SEAN WILDHAVER
SITUATION UNIT	BILLY WHITWORTH	<b>Branch</b>	<b>II</b>
SCKN	LISA DUNCAN	DIVISION/GROUP	
DEMOBILIZATION UNIT	JO ANN SMITH	<b>Branch</b>	<b>III</b>
DOCUMENTATION UNIT	SHARON E PHILLIPS	BRANCH DIRECTOR	KEN GREGOR
COMPUTER TECH	RICKY RICKS	DIVISION/GROUP	DIV M JOHN A JOHANSON
TRAINING SPECIALIST	ALTON HOKE	DIVISION/GROUP	DIV N/O ROBERT DINTAMAN
GIS SPECIALIST	ETHAN T ROBERTSON; ANNABETH PURCELL; MICHAEL TORBETT	DIVISION/GROUP	FWS IA/COT REGGIE FORCINE
INCIDENT METEOROLOGIST	RICK DAVIS	<b>7b. Air Operations Branch:</b>	
FIRE BEHAVIOR ANALYST	ROBERT E BURNSIDE	AIR OPS BRANCH DIRECTOR	MICHAEL P KERRIGAN
<b>6. Logistics Section:</b>		AIR ATTACK SUPERVISOR	MARK S NUNEZ; LARRY MARS
CHIEF	TOM LAMBERT; WILLIE BOSTON	ASGS	JOHN MASON
BASE CAMP MGR	VINCE PALANDRI; JASON HARRIS (T)	HEB1	MARC RUDKIN
SUPPLY UNIT	AMY WEAVER	<b>8. Finance/Administration Section:</b>	
FACILITIES UNIT	DENNIS M EVANS; WILLIE C JACKSON	CHIEF	REGGIE LANIER; GRACE REID
GROUND SUPPORT UNIT	TIMOTHY D JONES	PROCUREMENT UNIT	GINA DALLY
COMMUNICATIONS UNIT	CLAUDE GILLELAND	EQUIPMENT TIME	JOE FINCHER; TERESA KEGL
MEDICAL UNIT	JESUS HERNANDEZ, CLINT ROGERS(T)	COST UNIT	JASON P GILLIS
COMT	GEORGE BARBEE	TIME UNIT	LIBBY BAGWELL
FOOD UNIT	VAL NORMAN; B. SMITH (T)	PTRC	DOUG CHASSEREAU
		COMPENSATION UNIT	EILEEN CROUSE
<b>9. Prepared By:</b>		<b>Position/Title:</b> RESL	<b>Signature:</b>
ICS 203	Name: KEITH MURPHY IAP Page	Date/Time: 04/22/2017 1309	



# Fire Weather Forecast

**FORECAST NO: 10**  
**PREDICTION FOR: Monday Shifts**  
**SHIFT DATE: April 24, 2017**  
**FORECAST ISSUED: 1800 April 23, 2017**

**NAME OF FIRE: West Mims Fire**  
**UNIT: Okefenokee National Wildlife Refuge**  
**Incident Meteorologist: Rick Davis**  
**240-778-5277**

**DISCUSSION:** Residual moisture from the overnight weather system will hold over the region this morning, but clearing is expected by the afternoon. Temperatures will not be as warm as the last week, but short durations of RHs in the upper 30s is likely. Moderate surface winds and stronger transport winds aloft will again produce high dispersion values.

**TODAY (SUDAY DAY SHIFT):**

**WEATHER:** Mostly cloudy in the morning, then becoming partly cloudy in the afternoon.  
**WIND (20 FT):** West 6-8 mph the morning, increasing to 10 to 12 mph gusts to around 20 mph in the afternoon.  
**MAX TEMPERATURES:** 78 to 82.  
**MIN RH:** 38-42%.

**LAL:** 1      **Chance Measurable Rain:** 5% before 1000  
**DISPERSION:** 70-75 MAX    **MIXING HEIGHT** 5600 ft    **TRANSPORT WINDS:** W 15 to 20 mph.

**HOURLY WEATHER FORECAST**

Time	1000	1100	1200	1300	1400	1500	1600	1700	1800	1900	2000	2200	2400
Temp °F	70	73	75	76	78	79	81	78	76	73	69	63	61
RH %	66	57	50	45	42	40	38	40	42	48	52	66	72
Wind Dir	W	W	W	W	W	W	W	W	W	W	W	W	W
Wind Spd mph	5	7	8	9	10	11	11	11	11	10	9	7	5
Wind Gst mph	8	10	12	14	16	18	20	20	20	16	14	12	10

**TONIGHT (SUNDAY NIGHT SHIFT):**

**WEATHER:** Mostly clear with areas of smoke and fog.  
**WIND (20 FT):** West 7 to 10 mph with gusts around 15 mph in the evening, decreasing to 4 to 6 mph after midnight.  
**MIN TEMPERATURES:** 51 to 55.  
**MAX RH:** 95 to 100%.    **LVORI** 9 (max).  
**LAL:** 1      **Chance Measurable Rain:** 0%.

**MONDAY:**

**WEATHER:** Areas of morning fog and smoke then becoming mostly sunny.  
**WIND (20 FT):** West 6 to 8 mph in the morning, becoming WNW 8 to 10 mph gusts to around 15 mph.  
**MAX TEMPERATURES:** 83 to 86.  
**MIN RH:** 33-37%.  
**LAL:** 1      **Chance Measurable Rain:** 0%  
**DISPERSION:** 65-70 MAX    **MIXING HEIGHT** 5300    **TRANSPORT WINDS:** W around 15 mph.

Sunrise Sunday: 6:52 am  
Sunset Sunday: 8:05 pm

**RAWS Observations:**



# FIRE BEHAVIOR FORECAST

**FORECAST NUMBER: 05**

**TYPE OF FIRE: Wildfire**

**FIRE NAME: West Mims**

**OPERATIONAL PERIOD: 04/24/2017**

**DATE ISSUED: 04/23/2017**

**TIME ISSUED: 1800**

**UNIT: GA-OKR**

**SIGNED: *Robert E. Burnside***

**Typed/printed: Robert E. Burnside**

## INPUTS

**WEATHER:** Mostly cloudy in the morning then becoming partly cloudy in the afternoon.

**WIND (20 FT):** West 6-8 mph the morning, increasing to 10 to 12 mph gusts to 20 mph in the afternoon.

**MAX TEMPERATURES:** 78 to 82.

**MIN RH:** 38-42%.

**LAL: 1, CWR: 5% before 1000, DISPERSION: 70-75 MAX**

## OUTPUTS

### FIRE BEHAVIOR

#### GENERAL:

West winds will push the fire in a more easterly direction than what we saw yesterday. Fire behavior will be hampered by lingering cloud cover from cold front passage in the morning, but will become active by early afternoon.

With slightly decreased indices, the fire will still move actively, but with slightly less intensity. Expect fire growth up to three miles to the east, and flanking fire to continue moving the fire to the north as well. For short durations anticipate max Rates of Spread up to 30-40 ch/hr and flame lengths of 8-10 ft. By observation it appears that the flanking fire has higher flame lengths and more consistent flaming front as it moves across the landscape. This is likely due to its ability to get more direct sunlight and oxygen, not being hampered by the smoke column.

#### SPECIFIC:

**DIV A/B:** Little to no fire activity along the perimeter. Some internal pockets of unburned fuel continue to consume.

**DIV C:** Limited fire behavior is expected. Burning stump holes and heavy fuels are likely along the containment lines. Wind will push spots interior.

**DIV D:** Winds will be pushing the fire to the east, but strong flanking fire is likely to continue pushing it north, towards the State Park and Hwy 177. If pockets of fuel remain along the swamp edge on the south portion of the division expect backing fire towards the fireline. Any burnout operations should have favorable winds, blowing spots interior. If a burnout is conducted along Hwy177 fire will carry away or parallel to the fire break.

**DIV M/N/O:** Fire continues to move towards these divisions. Suppression actions with heavy helicopters have been successful in slowing projected fire growth to allow crews to finish preparations. Watch for fire to move 2-3 miles closer to these divisions today, barring further suppression actions.

#### AIR OPERATIONS:

No impact to air operations today.

## SAFETY

As crews continue to work the fire's edge remember that fire weakened trees pose a significant risk to firefighters. Before assigning work in timber, scout the area for hazards and activate mitigation measures before continuing.

## Division/Group Assignment List (ICS 204 WF)

<b>1. Incident Name:</b>			<b>3.</b>			
WEST MIMS			<b>Branch:</b>		<b>Division/Group:</b>	
<b>2. Operational Period:</b>			<b>I</b>			
DAY SHIFT 0800-2000			<b>A</b>			
Date/Time From: 04/24/2017 0800      MON		Date/Time To: 04/25/2017 0800      TUE				
<b>4. Operations Personnel</b>						
<b>OPERATIONS CHIEF</b>		MICHAEL H BRUNSON SHANNON BOWMAN		<b>BRANCH DIRECTOR</b>		DARRELL MILLER
<b>FIELD OPS</b>		HEATH MORTON		<b>DIVISION/GROUP SUPERVISOR</b>		ALLEN J CLAY
<b>SAFETY</b>		RICKY HOLBROOK		<b>AOBD</b>		MICHAEL KERRIGAN
<b>5. Resources Assigned this Period</b>						
Strike Team / Task Force / Resource Designator		LWD	Leader		Number Persons	Drop Off PT./Time
ENGINE - T6 - WILLIAMS WILDLAND FIRE SERVICES, LLC - C E-143		05/01	RYAN ROBINSON		3	DP#2/1000
EMTF O-44		04/27	WALTER REED		1	DP#2/1000
<b>6. Control Operations/Work Assignments:</b>						
<p><b>Patrol and mop-up all accessible fire line within 50-feet of fire perimeter.</b>  <b>Provide support for private landowner preparations for fire advance.</b>  <b>Monitor fire activity and check for spots.</b></p>						
<b>7. Special Instructions:</b>						
<p>Ensure LCES are in place before operations begin &amp; stay hydrated.          Drive defensively and with lights on at all times.          Identify escape routes.</p>						
<b>8. Division/Group Communication Summary</b>						
Function	Channel	RX Frequency N/W	RX Tone/NAC	TX Frequency N/W	TX Tone/NAC	Mode
COMMAND	5	159.465N	CSQ	151.1450	123.0	A
TRAVEL	6	159.390N	CSQ	159.3900	156.7	A
TACTICAL	7	154.3025	CSQ	154.3025	156.7	A
AIR TO GROUND	14	166.675N	CSQ	166.6750	CSQ	A
<b>9. Prepared By (Resource Unit Leader)</b>			<b>Approved By (Planning Section Chief)</b>		<b>Date</b>	<b>Time</b>
JUDY SMITH			RHEA COOPER		04/23/2017	1309

## Division/Group Assignment List (ICS 204 WF)

<b>1. Incident Name:</b>			<b>3.</b>			
WEST MIMS			<b>I</b>	<b>Division/Group:  AFUE</b>		
<b>2. Operational Period:</b> DAY SHIFT 0800-2000						
Date/Time From: 04/24/2017 0800	MON	Date/Time To: 04/25/2017 0800	TUE			
<b>4. Operations Personnel</b>						
<b>OPERATIONS CHIEF</b>	MICHAEL H BRUNSON SHANNON BOWMAN		<b>BRANCH DIRECTOR</b>	DARRELL MILLER		
<b>SAFETY</b>	RICKY HOLBROOK		<b>DIVISION/GROUP SUPERVISOR</b>	SEAN WILDHAVER		
<b>5. Resources Assigned this Period</b>						
Strike Team / Task Force / Resource Designator	LWD	Leader	Number Persons	Drop Off PT./Time	Pick Up PT./Time	
AFUE STUDY GROUP			2			
<b>6. Control Operations/Work Assignments:</b>						
<b>7. Special Instructions:</b>						
<b>8. Division/Group Communication Summary</b>						
Function	Channel	RX Frequency N/W	RX Tone/NAC	TX Frequency N/W	TX Tone/NAC	Mode
COMMAND						
TACTICAL						
LOGISTICS						
AIR TO GROUND						
<b>9. Prepared By (Resource Unit Leader)</b>		<b>Approved By (Planning Section Chief)</b>		<b>Date</b>	<b>Time</b>	
JUDY SMITH		RHEA COOPER		04/23/2017	1309	



## Division/Group Assignment List (ICS 204 WF)

<b>1. Incident Name:</b>			<b>3.</b>			
WEST MIMS			<b>Branch:</b>		<b>Division/Group:</b>	
<b>2. Operational Period:</b> DAY SHIFT 0800-2000			<b>I</b>		<b>B</b>	
Date/Time From: 04/24/2017 0800	MON	Date/Time To: 04/25/2017 0800	TUE			
<b>4. Operations Personnel</b>						
<b>OPERATIONS CHIEF</b>		MICHAEL H BRUNSON SHANNON BOWMAN		<b>BRANCH DIRECTOR</b>		
				DARRELL MILLER		
<b>FIELD OPS</b>		HEATH MORTON		<b>DIVISION/GROUP SUPERVISOR</b>		
				DOUG BERG; WILL BALCOM (T)		
<b>SAFETY</b>		RICKY HOLBROOK		<b>AIR OPS BRANCH DIRECTOR</b>		
				MICHAEL KERRIGAN		
<b>5. Resources Assigned this Period</b>						
Strike Team / Task Force / Resource Designator		LWD	Leader	Number Persons	Drop Off PT./Time	Pick Up PT./Time
STEQ		04/25	KENNETH WELLS (T) O-54	1	DP#2/1000	DP#2/2000
BRANTLEY 70 TPL3 - GFC2180 E-89		04/25	CHARLIE VINING E-89.2	1	DP#2/1000	DP#2/2000
CHARLTON 73 TPL2 - GFC1981 E-92		04/25	CRAIG A CARLISLE E-92.2	1	DP#2/1000	DP#2/2000
CLINCH 74 TPL2 - GFC1411 E-90		04/25	MICKEAL WILLIFORD E-90.2	1	DP#2/1000	DP#2/2000
ECHOLS 71 TPL3 - GFC2623 E-91		05/05	DAVID STEEDLEY 91.2	1	DP#2/1000	DP#2/2000
TFLD		05/06	MIKE MARTIN O-177	1	DP#2/1000	DP#2/2000
SHOAL CREEK ENG6 - E651 E-78		04/24	SNYDER	3	DP#2/1000	DP#2/2000
ENG6 - AR-OZF - PH - E-641 E-76		04/24	MICHAEL W KOCH	3	DP#2/1000	DP#2/2000
ENGINE - T6 - SMR #4461 E-1		05/04	GREG TITUS	2	DP#2/1000	DP#2/2000
ENGINE - T6 - NC-POR PLE1 E-2		05/19	AMY MIDGETTE	2	DP#2/1000	DP#2/2000
SOUTHEAST FOREST RESOURCES, 534661 E-58		04/26	J HAWTHORNE	3	DP#2/1000	DP#2/2000
STEN		05/01	HOWARD ODEN O-108	1	DP#2/1000	DP#2/2000
WATER TENDER - SUPPORT - T2 - WILDLANDS FIRE SERVICE I E-134		05/01	RUSTY KREBSBACH	1	DP#2/1000	DP#2/2000
WATER TENDER - SUPPORT - T1 - WILDLANDS FIRE SERVICE I E-132		05/01	DOUG SCOTT	1	DP#2/1000	DP#2/2000
ENGINE - T6 - 104719 E-149		05/01	GRIFFITH WILLIAM	1	DP#2/1000	DP#2/2000
ENGINE - T6 - SCS #14248 E-148		05/01	SAMUEL R ST LOUIS	2	DP#2/1000	DP#2/2000
ENGINE - T6 - WILDLANDS FIRE SERVICE - D65331 - 1 E-144		05/01	GARRISON	2	DP#2/1000	DP#2/2000
<b>8. Division/Group Communication Summary</b>						
Function	Channel	RX Frequency N/W	RX Tone/NAC	TX Frequency N/W	TX Tone/NAC	Mode
COMMAND	5	159.465N	CSQ	151.1450	123.0	A
TACTICAL	9	159.285N	CSQ	159.2850	156.7	A
AIR TO GROUND	14	166.675N	CSQ	166.6750	CSQ	A
AIR TO GROUND	15	169.1500	CSQ	169.1500	CSQ	A
<b>9. Prepared By (Resource Unit Leader)</b>			<b>Approved By (Planning Section Chief)</b>		<b>Date</b>	<b>Time</b>
JUDY SMITH			RHEA COOPER		04/23/2017	1309

## Division/Group Assignment List (ICS 204 WF)

<b>1. Incident Name:</b>			<b>3.</b>				
WEST MIMS			<b>Branch:</b>		<b>Division/Group:</b>		
<b>2. Operational Period:</b> DAY SHIFT 0800-2000			<b>I</b>		<b>B</b>		
Date/Time From: 04/24/2017 0800 MON		Date/Time To: 04/25/2017 0800 TUE					
<b>4. Operations Personnel</b>							
<b>OPERATIONS CHIEF</b>		MICHAEL H BRUNSON SHANNON BOWMAN		<b>BRANCH DIRECTOR</b>		DARRELL MILLER	
<b>FIELD OPS</b>		HEATH MORTON		<b>DIVISION/GROUP SUPERVISOR</b>		DOUG BERG; WILL BALCOM (T)	
<b>SAFETY</b>		RICKY HOLBROOK		<b>AIR OPS BRANCH DIRECTOR</b>		MICHAEL KERRIGAN	
<b>5. Resources Assigned this Period</b>							
Strike Team / Task Force / Resource Designator		LWD	Leader		Number Persons	Drop Off PT./Time	Pick Up PT./Time
HEQB		05/01	AARON O'DELL O-110		1	DP#2/1000	DP#2/2000
EXCAVATOR - T2 - WILDLANDS FIRE SERVICE INC - 113984 - E-159		05/02	DAVID SWEENEY		1	DP#2/1000	DP#2/2000
EXCAVATOR - T2 - ATTACK-ONE FIRE MANAGEMENT SERVICES I E-158		05/01	CASEY MILLER		1	DP#2/1000	DP#2/2000
HEQB		05/03	TIM WILSON O-89		1	DP#2/1000	DP#2/2000
DOZ2 - TIPTON & YOUNG E-153		05/01	AARON TIPTON		1	DP#2/1000	DP#2/2000
DOZ2 - WILDLANDS FIRE - T9332 E-156 OUT OF SERVICE					1	DP#2/1000	DP#2/2000
EMPF		04/27	WALTER REED O-44		1	DP#2/1000	DP#2/2000
SOFR		05/02	STEVEN WILLINGHAM (T) O-114		1	DP#2/1000	DP#2/2000
<b>6. Control Operations/Work Assignments:</b>							
Support firing operations & provide support for preparations by private landowners in advance of fire. Monitor fire activity and check for spots. Patrol and mop-up all accessible fire line within 50-feet of fire perimeter.							
<b>7. Special Instructions:</b>							
Ensure LCES are in place before operations begin & stay hydrated. Drive defensively and with lights on at all times. Identify escape routes.							
<b>8. Division/Group Communication Summary</b>							
Function	Channel	RX Frequency N/W	RX Tone/NAC	TX Frequency N/W	TX Tone/NAC	Mode	
COMMAND	5	159.465N	CSQ	151.1450	123.0	A	
TACTICAL	9	159.285N	CSQ	159.2850	156.7	A	
AIR TO GROUND	14	166.675N	CSQ	166.6750	CSQ	A	
AIR TO GROUND	15	169.1500	CSQ	169.1500	CSQ	A	
<b>9. Prepared By (Resource Unit Leader)</b>			<b>Approved By (Planning Section Chief)</b>		<b>Date</b>	<b>Time</b>	
JUDY SMITH			RHEA COOPER		04/23/2017	1309	

## Division/Group Assignment List (ICS 204 WF)

<b>1. Incident Name:</b>			<b>3.</b>			
WEST MIMS			<b>Branch:</b>		<b>Division/Group:</b>	
<b>2. Operational Period:</b>			I                      C			
DAY SHIFT 0800-2000 Date/Time From: 04/24/2017 0800      MON Date/Time To: 04/25/2017 0800      TUE						
<b>4. Operations Personnel</b>						
<b>OPERATIONS CHIEF</b>		MICHAEL H BRUNSON SHANNON BOWMAN		<b>BRANCH DIRECTOR</b>		DARRELL MILLER
<b>FIELD OPS</b>		HEATH MORTON		<b>DIVISION/GROUP SUPERVISOR</b>		CHRIS ROBERTS
<b>SAFETY</b>		RICKY HOLBROOK		<b>AIR OPS BRANCH DIRECTOR</b>		MICHAEL KERRIGAN
<b>5. Resources Assigned this Period</b>						
Strike Team / Task Force / Resource Designator		LWD	Leader	Number Persons	Drop Off PT./Time	Pick Up PT./Time
TFLD		04/28	STEVEN CAMPBELL O-79	1	DP#3/1000	DP#3/2000
ENGINE - T6 - MEC ENVIORMENTAL - B39955 - E22 E-145		05/02	MICHAEL COVEY	3	DP#3/1000	DP#3/2000
ENGINE - T6 - WILDLANDS FIRE SERVICE INC - 162856 - 22 E-146		05/02	DAN MENA	3	DP#3/1000	DP#3/2000
ENGINE - T6- NCS1 E-205		05/03	BRYN PIPES	2	DP#3/1000	DP#3/2000
ENGINE - T6 - NCS2 E-206		05/03	ANDERSON GARRETT	2	DP#3/1000	DP#3/2000
TFLD		05/02	DANIEL CEDENO O-86	1	DP#3/1000	DP#3/2000
WATER-TENDER-SUPPORT-T2-STRICKLANDS TRACTOR & SUPPLY E-265		05/06	LUCIUS CORBITT	1	DP#3/1000	DP#3/2000
DODGE 71 TPL3 - GFC3188 E-93		04/29	JAMES CARL CRAVEY III	1	DP#3/1000	DP#3/2000
LONG 72 TPL2 - GFC3266 E-94		04/29	DAVID R MASON	1	DP#3/1000	DP#3/2000
WATER TENDER - SUPPORT - T2 - TIPTON & YOUNG CONSTRUCT E-135		05/01	KEN SWAIN	1	DP#3/1000	DP#3/2000
EMANUEL 70 TPL3 - GFC1554 E-95		04/29	CHARLES DOUGLAS CLAXTON	1	DP#3/1000	DP#3/2000
ROAD GRADER - T2 - WILDLANDS FIRE SERVICE INC - 6198TE E-136		05/02	KEITH PARKER		DP#3/1000	DP#3/2000
<b>8. Division/Group Communication Summary</b>						
Function	Channel	RX Frequency N/W	RX Tone/NAC	TX Frequency N/W	TX Tone/NAC	Mode
COMMAND	5	159.465N	CSQ	151.1450	123.0	A
TRAVEL	6	159.390N	CSQ	159.3900	156.7	A
TACTICAL	12	159.4425N	CSQ	159.4425	CSQ	A
AIR TO GROUND	14	166.675N	CSQ	166.6750	CSQ	A
AIR TO GROUND	15	169.1500	CSQ	169.1500	CSQ	A
<b>9. Prepared By (Resource Unit Leader)</b>			<b>Approved By (Planning Section Chief)</b>		<b>Date</b>	<b>Time</b>
JUDY SMITH			RHEA COOPER		04/23/2017	1309

## Division/Group Assignment List (ICS 204 WF)

<b>1. Incident Name:</b>			<b>3.</b>			
WEST MIMS			<b>Branch:</b>		<b>Division/Group:</b>	
<b>2. Operational Period:</b> <b>DAY SHIFT 0800-2000</b>			<b>I</b>		<b>C</b>	
Date/Time From: 04/24/2017 0800                    MON		Date/Time To: 04/25/2017 0800                    TUE				
<b>4. Operations Personnel</b>						
<b>OPERATIONS CHIEF</b>		MICHAEL H BRUNSON SHANNON BOWMAN		<b>BRANCH DIRECTOR</b>		DARRELL MILLER
<b>FIELD OPS</b>		HEATH MORTON		<b>DIVISION/GROUP SUPERVISOR</b>		CHRIS ROBERTS
<b>SAFETY</b>		RICKY HOLBROOK		<b>AIR OPS BRANCH DIRECTOR</b>		MICHAEL KERRIGAN
<b>5. Resources Assigned this Period</b>						
Strike Team / Task Force / Resource Designator		LWD	Leader	Number Persons	Drop Off PT./Time	Pick Up PT./Time
EMTF		04/27	MICHAEL COPLIN O-45	1	DP#3/1000	DP#3/2000
SOFR		04/30	NICK TRESKO	1	DP#3/1000	DP#3/2000
<b>6. Control Operations/Work Assignments:</b>						
Recon potential control lines and examine area for snags or other hazards and identify mitigations. Prep fire line as needed. Provide support for private landowner preparations ahead of fire advance.						
<b>7. Special Instructions:</b>						
Ensure LCES are in place before operations begin & stay hydrated. Drive defensively and with lights on at all times. Identify escape routes.						
<b>8. Division/Group Communication Summary</b>						
Function	Channel	RX Frequency N/W	RX Tone/NAC	TX Frequency N/W	TX Tone/NAC	Mode
COMMAND	5	159.465N	CSQ	151.1450	123.0	A
TRAVEL	6	159.390N	CSQ	159.3900	156.7	A
TACTICAL	12	159.4425N	CSQ	159.4425	CSQ	A
AIR TO GROUND	14	166.675N	CSQ	166.6750	CSQ	A
AIR TO GROUND	15	169.1500	CSQ	169.1500	CSQ	A
<b>9. Prepared By (Resource Unit Leader)</b>			<b>Approved By (Planning Section Chief)</b>		<b>Date</b>	<b>Time</b>
JUDY SMITH			RHEA COOPER		04/23/2017	1309

## Division/Group Assignment List (ICS 204 WF)

<b>1. Incident Name:</b>				<b>3.</b>			
WEST MIMS				<b>I</b>		<b>D</b>	
<b>2. Operational Period:</b> DAY SHIFT 0800-2000							
Date/Time From: 04/24/2017 0800 MON		Date/Time To: 04/25/2017 0800 TUE					
<b>4. Operations Personnel</b>							
<b>OPERATIONS CHIEF</b>		MIKE BRUNSON SHANNON BOWMAN		<b>BRANCH DIRECTOR</b>		DARRELL MILLER	
<b>FIELD OPS</b>		HEATH MORTON		<b>DIVISION/GROUP SUPERVISOR</b>		MARK L BRYANT	
<b>SAFETY</b>		RICKY HOLBROOK		<b>AIR OPS BRANCH DIRECTOR</b>		MICHAEL KERRIGAN	
<b>5. Resources Assigned this Period</b>							
Strike Team / Task Force / Resource Designator		LWD	Leader	Number Persons	Drop Off PT./Time	Pick Up PT./Time	
TFLD		04/28	LORAN ANDERSON O-85	1	DP3/1000	DP3/2000	
ENG6 - AR-OZF - BM - E-651 E-57		04/29	TOMMY STROTHER	4	DP3/1000	DP3/2000	
COLQUIT 86 SUPPLY TRUCK E-118		04/28	JOSEPH C BRINSON	1	DP3/1000	DP3/2000	
ENG6 BALDWIN FORESTRY - A95852 - E-1 E-152		05/01	DAVID BALDWIN	3	DP3/1000	DP3/2000	
ENG6 - OSCEOLA - 641 E-157		04/29	BRYAN HUGGINS	3	DP3/1000	DP3/2000	
CREW - T1- MESA IHC C-4		04/30	PATRICK J MOORE	21	DP3/1000	DP3/2000	
STEQ		04/28	MARK SHUTTERS O-75	1	DP3/1000	DP3/2000	
TPL4 MARION 70 -GFC3284 E-82		04/28	WILLIAM LOVETTE HAGIN	1	DP3/1000	DP3/2000	
TPL4 DOOLY 71 -GFC3287 E-83		04/28	ROGER D POLLOCK	1	DP3/1000	DP3/2000	
TPL4 CRAWFORD 71 - GFC1455 E-84		04/28	WILLIAM JAMES CHESTER	1	DP3/1000	DP3/2000	
HEQB		05/02	JEFF LISSICK O-111	1	DP3/1000	DP3/2000	
ROAD GRADER - E-234		05/02	ROBBIE WARRELL	1	DP3/1000	DP3/2000	
DOZ1 W/KG BLADE WARE 76 E-138		05/01	HILTON BENNETT	1	DP3/1000	DP3/2000	
<b>8. Division/Group Communication Summary</b>							
Function	Channel	RX Frequency N/W	RX Tone/NAC	TX Frequency N/W	TX Tone/NAC	Mode	
COMMAND	5	159.465N	CSQ	151.1450	123.0	A	
TRAVEL	6	159.390N	CSQ	159.3900	156.7	A	
TACTICAL	13	159.4125N	CSQ	159.4125	CSQ	A	
AIR TO GROUND	14	166.675N	CSQ	166.6750	CSQ	A	
AIR TO GROUND	15	169.1500	CSQ	169.1500	CSQ	A	
<b>9. Prepared By (Resource Unit Leader)</b>			<b>Approved By (Planning Section Chief)</b>			<b>Date</b>	<b>Time</b>
JUDY SMITH			RHEA COOPER			04/23/2017	1309

## Division/Group Assignment List (ICS 204 WF)

<b>1. Incident Name:</b>			<b>3.</b>			
WEST MIMS			<b>Branch:</b>		<b>Division/Group:</b>	
<b>2. Operational Period:</b> <b>DAY SHIFT 0800-2000</b>			<b>I</b>		<b>D</b>	
Date/Time From: 04/24/2017 0800	MON	Date/Time To: 04/25/2017 0800	TUE			
<b>4. Operations Personnel</b>						
<b>OPERATIONS CHIEF</b>		MIKE BRUNSON SHANNON BOWMAN		<b>BRANCH DIRECTOR</b>		
<b>FIELD OPS</b>		HEATH MORTON		<b>DIVISION/GROUP SUPERVISOR</b>		
<b>SAFETY</b>		RICKY HOLBROOK		<b>AIR OPS BRANCH DIRECTOR</b>		
				DARRELL MILLER		
				MARK L BRYANT		
				MICHAEL KERRIGAN		
<b>5. Resources Assigned this Period</b>						
Strike Team / Task Force / Resource Designator		LWD	Leader	Number Persons	Drop Off PT./Time	Pick Up PT./Time
EMTP		04/27	MICHAEL COPLIN O-45	1	DP3/1000	DP3/2000
SOFR		04/30	JAMES T WILLIAMS O-82	1	DP3/1000	DP3/2000
<b>6. Control Operations/Work Assignments:</b>						
Recon potential control lines and examine area for snags or other hazards. Prep for structure protection along Hwy 177 and Stephen Foster State Park. Provide support for private landowner preparations ahead of fire advance.						
<b>7. Special Instructions:</b>						
Ensure LCES are in place before operations begin & stay hydrated. Drive defensively and with lights on at all times. Identify escape routes.						
<b>8. Division/Group Communication Summary</b>						
Function	Channel	RX Frequency N/W	RX Tone/NAC	TX Frequency N/W	TX Tone/NAC	Mode
COMMAND	5	159.465N	CSQ	151.1450	123.0	A
TRAVEL	6	159.390N	CSQ	159.3900	156.7	A
TACTICAL	13	159.4125N	CSQ	159.4125	CSQ	A
AIR TO GROUND	14	166.675N	CSQ	166.6750	CSQ	A
AIR TO GROUND	15	169.1500	CSQ	169.1500	CSQ	A
<b>9. Prepared By (Resource Unit Leader)</b>			<b>Approved By (Planning Section Chief)</b>		<b>Date</b>	<b>Time</b>
JUDY SMITH			RHEA COOPER		04/23/2017	1309

## Division/Group Assignment List (ICS 204 WF)

<b>1. Incident Name:</b>			<b>3.</b>			
WEST MIMS			<b>Branch:</b>		<b>Division/Group:</b>	
<b>2. Operational Period:</b>			<b>I</b>		<b>A/B/C/D NIGHT</b>	
Date/Time From: 04/24/2017 2000      MON		Date/Time To: 04/25/2017 0800      TUE				
<b>4. Operations Personnel</b>						
<b>OPERATIONS CHIEF</b>		SHANNON BOWMAN MICHAEL H BRUNSON		<b>BRANCH DIRECTOR</b>		
				DARRELL MILLER		
<b>SAFETY</b>		RICKY HOLBROOK		<b>DIVISION/GROUP SUPERVISOR</b>		
				CHRISTOPHER L BUCHANAN RONALD L CALHOUN		
<b>5. Resources Assigned this Period</b>						
Strike Team / Task Force / Resource Designator		LWD	Leader	Number Persons	Drop Off PT./Time	Pick Up PT./Time
STEQ		04/28	JACKIE BROWN O-61	1	DP#3/2000	DP#3/0800
BLECKLEY 71 TPL4 - GFC3121 E-70		04/28	MULLIS	1	DP#3/2000	DP#3/0800
EVANS 72 TPL4 - GFC1378 E-71		04/25	JOHNSON	1	DP#3/2000	DP#3/0800
CANDLER 71 TPL4 - GFC1181 E-72		04/28	JONES	1	DP#3/2000	DP#3/0800
STEN		05/01	TODD HYATT O-109	1	DP#3/2000	DP#3/0800
ENGINE - T6 - LONDON E6141 E-3		04/28	KEVIN TOMLINSON	3	DP#3/2000	DP#3/0800
ENGINE - T6 - APALACH - 611 E-4		04/24	AARON RADFORD	2	DP#3/2000	DP#3/0800
ENGINE - T6 - WAKULLA- 661 E-5		04/24	TRIXIE LEE SMITH JR	3	DP#3/2000	DP#3/0800
ENGINE - T6 - CRANE'S WILDLAND FIRE RESPONSE - 125996 E-150		05/01	DON CRANE	2	DP#3/2000	DP#3/0800
ENGINE - T6 - PATRICK ENVIRONMENTAL INC - B56463 - E94 E-151		05/01	PHILLIP RIDGLEY	3	DP#3/2000	DP#3/0800
ENGINE - T6 - PATRICK ENVIRONMENTAL INC - C44474 - E95 E-147		05/01	BEN CASTLE	3	DP#3/2000	DP#3/0800
TFLD		04/25	RON CALHOUN O-18.15	1	DP#3/2000	DP#3/0800
ENG6 - UNIT #9663 - SMITHVILLE TF6 E-259		05/06	GOLDEN W POWELL	3	DP#3/2000	DP#3/0800
ENG6 - NC-NCF E-691 E-255		05/06	LONNIE L STALCUP	3	DP#3/2000	DP#3/0800
ENG6 - NC-NCF E-621 E-256		05/06	TIMOTHY SOLESBEE	3	DP#3/2000	DP#3/0800
EMPF		05/01	MICHAEL R CONNOLLY O- 100	1	DP#3/2000	DP#3/0800
EMTP		05/02	BEN PALM	1	DP#3/2000	DP#3/0800
SOFR		05/04	CARSON JONES O-141	1	DP#3/2000	DP#3/0800
<b>6. Control Operations/Work Assignments:</b>						
<b>8. Division/Group Communication Summary</b>						
Function	Channel	RX Frequency N/W	RX Tone/NAC	TX Frequency N/W	TX Tone/NAC	Mode
COMMAND	5	159.4650	CSQ	151.1450	123.0	A
TRAVEL	6	159.3900	CSQ	159.3900	156.7	A
AIR TO GROUND	14	166.6750	CSQ	166.6750	CSQ	A
AIR TO GROUND	15	169.1500	CSQ	169.1500	CSQ	A
<b>9. Prepared By (Resource Unit Leader)</b>			<b>Approved By (Planning Section Chief)</b>		<b>Date</b>	<b>Time</b>
KEITH MURPHY			RHEA COOPER		04/23/2017	1310

## Division/Group Assignment List (ICS 204 WF)

<b>1. Incident Name:</b>			<b>3.</b>			
WEST MIMS			<b>I</b>	<b>Division/Group:  A/B/C/D NIGHT</b>		
<b>2. Operational Period:</b> NIIGHT SHIFT 2000-0800						
Date/Time From:	MON	Date/Time To:	TUE			
04/24/2017 2000		04/25/2017 0800				
<b>4. Operations Personnel</b>						
<b>OPERATIONS CHIEF</b>		SHANNON BOWMAN MICHAEL H BRUNSON	<b>BRANCH DIRECTOR</b>		DARRELL MILLER	
<b>SAFETY</b>		RICKY HOLBROOK	<b>DIVISION/GROUP SUPERVISOR</b>		CHRISTOPHER L BUCHANAN RONALD L CALHOUN	
<b>6. Control Operations/Work Assignments:</b>						
Patrol lines and burned areas in DIV A, B, C, D. Monitor nighttime fire activity.						
<b>7. Special Instructions:</b>						
Contact Night Incident Communications for any needs. Brief/Debrief with DIVS from A, B, C, D or OPS Chief. Identify escape routes.						
<b>8. Division/Group Communication Summary</b>						
Function	Channel	RX Frequency N/W	RX Tone/NAC	TX Frequency N/W	TX Tone/NAC	Mode
COMMAND	5	159.4650	CSQ	151.1450	123.0	A
TRAVEL	6	159.3900	CSQ	159.3900	156.7	A
AIR TO GROUND	14	166.6750	CSQ	166.6750	CSQ	A
AIR TO GROUND	15	169.1500	CSQ	169.1500	CSQ	A
<b>9. Prepared By (Resource Unit Leader)</b>			<b>Approved By (Planning Section Chief)</b>		<b>Date</b>	<b>Time</b>
KEITH MURPHY			RHEA COOPER		04/23/2017	1310



## Division/Group Assignment List (ICS 204 WF)

<b>1. Incident Name:</b>			<b>3.</b>			
WEST MIMS			<b>I</b>		<b>FIRING GROUP</b>	
<b>2. Operational Period:</b> DAY SHIFT 0800-2000						
Date/Time From: 04/24/2017 0800 MON		Date/Time To: 04/25/2017 0800 TUE				
<b>4. Operations Personnel</b>						
<b>OPERATIONS CHIEF</b>		MICHAEL H BRUNSON SHANNON BOWMAN		<b>BRANCH DIRECTOR</b>		DARRELL MILLER
<b>FIELD OPS</b>		HEATH MORTON		<b>DIVISION/GROUP SUPERVISOR</b>		BLAIR H JOINER TRACY N MOBLEY
<b>SAFETY</b>		RICKY HOLBROOK		<b>AIR OPS BRANCH DIRECTOR</b>		MICHAEL KERRIGAN
<b>5. Resources Assigned this Period</b>						
Strike Team / Task Force / Resource Designator		LWD	Leader	Number Persons	Drop Off PT./Time	Pick Up PT./Time
STEQ		04/25	THOMAS WHITLEY O-55	1	DP#2/1000	DP#2/2000
LANIER 71 TPL2 - GFC1444 E-86		04/25	WILLIAM R DASHER E-86.2	1	DP#2/1000	DP#2/2000
ATKINSON 70 TPL2-GFC3292 E-87		04/25	DEREK L HARPER E-87.2	1	DP#2/1000	DP#2/2000
CLINCH 72 TPL2 - GFC3229 E-85		04/25	RICHARD J SQUIRES E-85.2	1	DP#2/1000	DP#2/2000
TPL2 WARE 71 E-88 - UNSTAFFED						
TFLD E-61.1		04/28	ADAM GREESON	1	DP#2/1000	DP#2/2000
MODULE - SUPPRESSION - CHEROKEE IHC SHORT CREW O-63		04/23	CORBITT	16	DP#2/1000	DP#2/2000
MURRAY 86 ENG6 - 4201016 E-61		04/28	ANDY GAMLEN	2	DP#2/1000	DP#2/2000
LUMPKIN 86 ENG6 - GFC4201278 E-40		04/28	WESLEY JOSEPH SISK	2	DP#2/1000	DP#2/2000
FRANKLIN 86 ENG6 - GFC4202065 E-59		04/28	RICHARD ALLEN MATHEWS	2	DP#2/1000	DP#2/2000
CHATTOOGA 86 ENG6 E-60		04/28	TAYLOR K WILLINGHAM	1	DP#2/1000	DP#2/2000
ENGINE-T6-E631 E-56		04/27	BRAD TAYLOR	3	DP#2/1000	DP#2/2000
TFLD		04/27	RODNEY HEARD O-80	1	DP#2/1000	DP#2/2000
WATER TENDER-SUPPORT-T2-STRICKLANDS TRACTOR & AUTO E-272		05/06	DANNY STRICKLAND		DP#2/1000	DP#2/2000
DECATUR 70 TPL4-GFC3285 E-96		04/28	VAN SMITH E-96.2	1	DP#2/1000	DP#2/2000
COOK 71 TPL3 - GFC1517 E-97		04/28	JAMES WALTER SIRMANS	1	DP#2/1000	DP#2/2000
BROOKS 72 TPL2-GFC3294 E-98		04/28	CLAYTON TYLER HARDEN	1	DP#2/1000	DP#2/2000
ENG6 - 6171 E-77		04/24	ERIC GLADNEY	3	DP#2/1000	DP#2/2000
<b>8. Division/Group Communication Summary</b>						
Function	Channel	RX Frequency N/W	RX Tone/NAC	TX Frequency N/W	TX Tone/NAC	Mode
COMMAND	5	159.37		151.12	100	A
TACTICAL	8	163.7125	CSQ	163.7125	CSQ	A
<b>9. Prepared By (Resource Unit Leader)</b>			<b>Approved By (Planning Section Chief)</b>		<b>Date</b>	<b>Time</b>
JUDY SMITH			RHEA COOPER		04/23/2017	1309

## Division/Group Assignment List (ICS 204 WF)

<b>1. Incident Name:</b>			<b>3.</b>			
WEST MIMS			<b>I</b>		<b>FIRING GROUP</b>	
<b>2. Operational Period:</b> DAY SHIFT 0800-2000						
Date/Time From: 04/24/2017 0800 MON		Date/Time To: 04/25/2017 0800 TUE				
<b>4. Operations Personnel</b>						
<b>OPERATIONS CHIEF</b>		MICHAEL H BRUNSON SHANNON BOWMAN		<b>BRANCH DIRECTOR</b>		DARRELL MILLER
<b>FIELD OPS</b>		HEATH MORTON		<b>DIVISION/GROUP SUPERVISOR</b>		BLAIR H JOINER TRACY N MOBLEY
<b>SAFETY</b>		RICKY HOLBROOK		<b>AIR OPS BRANCH DIRECTOR</b>		MICHAEL KERRIGAN
<b>5. Resources Assigned this Period</b>						
Strike Team / Task Force / Resource Designator		LWD	Leader	Number Persons	Drop Off PT./Time	Pick Up PT./Time
SOFR		04/25	SAMMY MCFARLAND O-10	1	DP#2/1000	DP#2/2000
<b>6. Control Operations/Work Assignments:</b>						
Tactical firing operations and provide support for divisions in advance of fire. Monitor fire activity and hold line.						
<b>7. Special Instructions:</b>						
Ensure LCES are in place before operations begin & stay hydrated. Drive defensively and with lights on at all times. Communicate with all adjoining divisions before initiating firing operations. Identify escape routes.						
<b>8. Division/Group Communication Summary</b>						
Function	Channel	RX Frequency N/W	RX Tone/NAC	TX Frequency N/W	TX Tone/NAC	Mode
COMMAND	5	159.37		151.12	100	A
TACTICAL	8	163.7125	CSQ	163.7125	CSQ	A
<b>9. Prepared By (Resource Unit Leader)</b>			<b>Approved By (Planning Section Chief)</b>		<b>Date</b>	<b>Time</b>
JUDY SMITH			RHEA COOPER		04/23/2017	1309

## Division/Group Assignment List (ICS 204 WF)

<b>1. Incident Name:</b>			<b>3.</b>				
WEST MIMS			<b>I</b>	<b>Branch:</b>		<b>Division/Group:</b>	
<b>2. Operational Period:</b> DAY SHIFT 0800-2000				<b>FL FFS CONTINGENCY</b>			
Date/Time From: 04/24/2017 0800 MON	Date/Time To: 04/25/2017 0800 TUE						
<b>4. Operations Personnel</b>							
<b>OPERATIONS CHIEF</b>		MICHAEL H BRUNSON SHANNON BOWMAN		<b>BRANCH DIRECTOR</b>		DARRELL MILLER	
<b>FIELD OPS</b>		HEATH MORTON		<b>DIVISION/GROUP SUPERVISOR</b>		KEITH OSTEEEN	
<b>SAFETY</b>		RICKY HOLBROOK		<b>AIR OPS BRANCH DIRECTOR</b>		MICHAEL KERRIGAN	
<b>5. Resources Assigned this Period</b>							
Strike Team / Task Force / Resource Designator		LWD	Leader	Number Persons	Drop Off PT./Time	Pick Up PT./Time	
TPL2 JOHN BETHEA				1	JOHN BETHEA/0800	JOHN BETHEA/2000	
TPL2				1	JOHN BETHEA/0800	JOHN BETHEA/2000	
DOZ2				1	JOHN BETHEA/0800	JOHN BETHEA/2000	
DOZ2				1	JOHN BETHEA/0800	JOHN BETHEA/2000	
DOZ2				1	JOHN BETHEA/0800	JOHN BETHEA/2000	
DOZ1				1	JOHN BETHEA/0800	JOHN BETHEA/2000	
ENG6				2	JOHN BETHEA/0800	JOHN BETHEA/2000	
ENG6				2	JOHN BETHEA/0800	JOHN BETHEA/2000	
ENG6				2	JOHN BETHEA/0800	JOHN BETHEA/2000	
<b>6. Control Operations/Work Assignments:</b>							
Recon potential control lines & examine area for snags or other hazards. Provide support for private landowner preparations ahead of fire advance. Use the tactical channel for the division you are in.							
<b>7. Special Instructions:</b>							
Ensure LCES are in place before operations begin. Drive defensively and with lights on at all times.							
<b>8. Division/Group Communication Summary</b>							
Function	Channel	RX Frequency N/W	RX Tone/NAC	TX Frequency N/W	TX Tone/NAC	Mode	
TRAVEL	6	159.390N	CSQ	159.3900	156.7	A	
AIR TO GROUND	14	166.675N	CSQ	166.6750	CSQ	A	
AIR TO GROUND	15	169.1500	CSQ	169.1500	CSQ	A	
<b>9. Prepared By (Resource Unit Leader)</b>			<b>Approved By (Planning Section Chief)</b>		<b>Date</b>	<b>Time</b>	
JUDY SMITH			/S/ RHEA COOPER		04/23/2017	1309	

## Division/Group Assignment List (ICS 204 WF)

<b>1. Incident Name:</b>			<b>3.</b>			
WEST MIMS			<b>III</b>		<b>Division/Group:  FWS IA/CONT</b>	
<b>2. Operational Period:</b> <b>DAY SHIFT 0800-2000</b>						
Date/Time From: 04/24/2017 0800                    MON		Date/Time To: 04/25/2017 0800                    TUE				
<b>4. Operations Personnel</b>						
<b>OPERATIONS CHIEF</b>		MICHAEL BRUNSON SHANNON BOWMAN		<b>BRANCH DIRECTOR</b> KEN GREGOR		
<b>FIELD OPS</b>		HEATH MORTON		<b>DIVISION/GROUP SUPERVISOR</b> ROCKY CHESSER		
<b>SAFETY</b>		RICKY HOLBROOK		<b>AIR OPS BRANCH DIRECTOR</b> MICHAEL KERRIGAN		
<b>5. Resources Assigned this Period</b>						
Strike Team / Task Force / Resource Designator		LWD	Leader	Number Persons	Drop Off PT./Time	Pick Up PT./Time
ICT4			ANDY HEISEY	1	/0800	/2000
DOZ2 GA-SAR 922 - IA		04/28	JOHNSON	2	/0800	/2000
DOZ2 OKE-54 E-34 - IA		04/29	BROWN	1	/0800	/2000
OKE 56 - TPL E-35 - IA			ALLIE	1	/0800	/2000
ENGINE - T6 - OK-4261 E-36 - IA			M. SMITH	2	/0800	/2000
OKE ROAD GRAGER - CONT		04/25	BENTLEY	1	/0800	/2000
HEQB - CONT		04/27	R. MCCLAIN	1	/0800	/2000
SC-CSR - TPL 223 E-240 - CONT			PRIVETT	1	/0800	/2000
HEQB - CONT			CORY BRYANT	1	/0800	/2000
NC PXI - TPL E-131 - CONT			POWELL	1	/0800	/2000
<b>6. Control Operations/Work Assignments:</b>						
<p>Recon potential control lines and examine area for snags or other hazards.                      Prep firelines as needed.                      Provide support for private landowner preparations ahead of fire advance.</p>						
<b>7. Special Instructions:</b>						
<p>Contact Reggie Forcine for any cultural or archeological needs, as well as, RCW concerns.                      Ensure LCES are in place before operations begin &amp; stay hydrated.                      Drive defensively and with lights on at all times.                      Communications: Use the tactical channel for the division you are in.                      Staging on east side at Refuge office.</p>						
<b>8. Division/Group Communication Summary</b>						
Function	Channel	RX Frequency N/W	RX Tone/NAC	TX Frequency N/W	TX Tone/NAC	Mode
COMMAND	3	159.120N		151.370N	82.5	A
TACTICAL	8	163.7125	CSQ	163.7125	CSQ	A
AIR TO GROUND	14	166.675N	CSQ	166.6750	CSQ	A
<b>9. Prepared By (Resource Unit Leader)</b>			<b>Approved By (Planning Section Chief)</b>		<b>Date</b>	<b>Time</b>
JUDY SMITH			RHEA COOPER		04/23/2017	1309

## Division/Group Assignment List (ICS 204 WF)

<b>1. Incident Name:</b>			<b>3.</b>			
WEST MIMS			<b>III</b>		<b>M</b>	
<b>2. Operational Period:</b> DAY SHIFT 0800-2000						
Date/Time From: 04/24/2017 0800 MON		Date/Time To: 04/25/2017 0800 TUE				
<b>4. Operations Personnel</b>						
<b>OPERATIONS CHIEF</b>		SHANNON BOWMAN MICHAEL H BRUNSON		<b>BRANCH DIRECTOR</b>		KEN GREGOR
<b>FIELD OPS</b>		HEATH MORTON		<b>DIVISION/GROUP SUPERVISOR</b>		JOHN A JOHANSON BILL KORNRUMPH (STPS)
<b>SAFETY</b>		RICKY HOLBROOK		<b>AIR OPS BRANCH DIRECTOR</b>		MICHAEL KERRIGAN
<b>5. Resources Assigned this Period</b>						
Strike Team / Task Force / Resource Designator		LWD	Leader	Number Persons	Drop Off PT./Time	Pick Up PT./Time
TFLD		05/02	JAMES MCCALLIE O-92	1	/1000	/2000
MODULE - WILDLAND FIRE - FWS - BALCONES O-115		05/01	DARREN PROCTOR	7	/1000	/2000
CREW - T2IA - PR MA #4 C-5		04/27	GABRIEL EDUARDO GUTIERREZ VILLANUEVA	20	/1000	/2000
ENGINE - T6 - UNIT #9360 - MCGREGOR TF3 E-120		05/02	BOE ADLER	3	/1000	/2000
ENGINE - T3 - UNIT #9530 - FT STOCKTON TF5 E-122		05/02	CAMERON TOWNE (T)	5	/1000	/2000
TRACTOR PLOW - T5 - UNIT #8591 - WOODVILLE E-126		05/02	MICHAEL L CARTER JR	2	/1000	/2000
TRACTOR PLOW - T5 - UNIT# 8394 - JASPER E-125		05/02	JIMMIE PRIMROSE	2	/1000	/2000
WATER TENDER - SUPPORT - T1 - WILDLANDS FIRE SERVICE I E-133		05/01	RANDALL EDENFIELD	1	/1000	/2000
SOF1		04/28	BOO WALKER O-140	1	/1000	/2000
<b>6. Control Operations/Work Assignments:</b>						
Recon potential control lines and inspect for snags or other hazards. Prep for structures protections where indicated. Provide support for private landowner preparations ahead of fire advance.						
<b>7. Special Instructions:</b>						
Ensure LCES are in place before operations begin and stay hydrated. Drive defensively and with lights on at all times. Identify escape routes.						
<b>8. Division/Group Communication Summary</b>						
Function	Channel	RX Frequency N/W	RX Tone/NAC	TX Frequency N/W	TX Tone/NAC	Mode
COMMAND	3	159.120N		151.370N	82.5	A
TACTICAL	10	168.350N	CSQ	168.350N	CSQ	A
<b>9. Prepared By (Resource Unit Leader)</b>			<b>Approved By (Planning Section Chief)</b>		<b>Date</b>	<b>Time</b>
JUDY SMITH			RHEA COOPER		04/23/2017	1309

## Division/Group Assignment List (ICS 204 WF)

<b>1. Incident Name:</b>				<b>3.</b>			
WEST MIMS				<b>Branch:</b>		<b>Division/Group:</b>	
<b>2. Operational Period:</b> <b>DAY SHIFT 0800-2000</b>				<b>III</b>		<b>N/O</b>	
Date/Time From: 04/24/2017 0800                    MON		Date/Time To: 04/25/2017 0800                    TUE					
<b>4. Operations Personnel</b>							
<b>OPERATIONS CHIEF</b>		MICHAEL H BRUNSON SHANNON BOWMAN		<b>BRANCH DIRECTOR</b>		KEN GREGOR	
<b>FIELD OPS</b>		HEATH MORTON		<b>DIVISION/GROUP SUPERVISOR</b>		ROB DINTAMAN BILL KORNRUMPH (STPS)	
<b>SAFETY</b>		RICKY HOLBROOK		<b>AIR OPS BRANCH DIRECTOR</b>		MICHAEL KERRIGAN	
<b>5. Resources Assigned this Period</b>							
Strike Team / Task Force / Resource Designator		LWD	Leader	Number Persons	Drop Off PT./Time	Pick Up PT./Time	
TFLD		05/02	STEVEN MOORE O-91	1	DP#1800/1000	DP#18/2000	
ENGINE - T6 - UNIT #9060 - AMARILLO E-119		05/02	WILLIAM B GAGE	2	DP#1800/1000	DP#18/2000	
ENGINE - T3 - UNIT #9830 - LUBBOCK TF8 E-121		05/02	MATTHEW V SCHLAEFER	5	DP#1800/1000	DP#18/2000	
TRACTOR PLOW - T5 - UNIT #9892 - WOLFFORTH TF8 E-123		05/02	KEVIN BOYD	2	DP#1800/1000	DP#18/2000	
TRACTOR PLOW - T5 - UNIT #9693 - SMITHVILLE E-124		05/02	DUSTIN W MORRIS	2	DP#1800/1000	DP#18/2000	
ENG6 - E7566-ATTACK ONE FIRE MGMT SERV E- 257		05/07	JOHN HOELLERICH	2	DP#1800/1000	DP#18/2000	
ENG6 - SCHOLL FIRE & FUELS MANAGEMENT, INC. - 2 E-263		05/07	ROBERT MAHARREY	3			
STPL		05/01	DANIEL KELLEY O-124	1	DP#1800/1000	DP#18/2000	
TRACTOR PLOW - T4 - GFC1075 E-181		05/01	H. TAYLOR	1	DP#1800/1000	DP#18/2000	
MITCHELL 73 TRACTOR PLOW - T4 - GFC3225 E- 182		05/01	B. JENSON	1	DP#1800/1000	DP#18/2000	
GRADY 70 TRACTOR PLOW - T4 - GFC1202 E-183		05/01	B. KIRKSEY	1	DP#1800/1000	DP#18/2000	
HEQB		04/30	BERNHARD BUCKNER O- 90	1	DP#1800/1000	DP#18/2000	
EXCAVATOR W/ MASTICATOR			PARISH	5	DP#1800/1000	DP#18/2000	
BROWNS TC			DARYL	1	DP#1800/1000	DP#18/2000	
<b>8. Division/Group Communication Summary</b>							
Function	Channel	RX Frequency N/W	RX Tone/NAC	TX Frequency N/W	TX Tone/NAC	Mode	
COMMAND	5	159.120N		151.370N	82.5	A	
TACTICAL	8	163.7125	CSQ	163.7125	CSQ	A	
AIR TO GROUND	14	166.675N	CSQ	166.6750	CSQ	A	
<b>9. Prepared By (Resource Unit Leader)</b>			<b>Approved By (Planning Section Chief)</b>			<b>Date</b>	<b>Time</b>
JUDY SMITH			RHEA COOPER			04/23/2017	1309

## Division/Group Assignment List (ICS 204 WF)

<b>1. Incident Name:</b>			<b>3.</b>			
WEST MIMS			<b>III</b>		<b>N/O</b>	
<b>2. Operational Period:</b> DAY SHIFT 0800-2000						
Date/Time From: 04/24/2017 0800 MON		Date/Time To: 04/25/2017 0800 TUE				
<b>4. Operations Personnel</b>						
<b>OPERATIONS CHIEF</b>		MICHAEL H BRUNSON SHANNON BOWMAN		<b>BRANCH DIRECTOR</b>		KEN GREGOR
<b>FIELD OPS</b>		HEATH MORTON		<b>DIVISION/GROUP SUPERVISOR</b>		ROB DINTAMAN BILL KORNRUMPH (STPS)
<b>SAFETY</b>		RICKY HOLBROOK		<b>AIR OPS BRANCH DIRECTOR</b>		MICHAEL KERRIGAN
<b>5. Resources Assigned this Period</b>						
Strike Team / Task Force / Resource Designator		LWD	Leader	Number Persons	Drop Off PT./Time	Pick Up PT./Time
SOF1		04/28	BOO WALKER O-140	1	DP#1800/1000	DP#18/2000
<b>6. Control Operations/Work Assignments:</b>						
Recon potential control lines and inspect for snags or other hazards. Prep for structure protection where indicated. Provide support for private landowner preparations ahead of fire advance.						
<b>7. Special Instructions:</b>						
Ensure LCES are in place before operations begin and stay hydrated. Drive defensively and with lights on at all times. Identify escape routes.						
<b>8. Division/Group Communication Summary</b>						
Function	Channel	RX Frequency N/W	RX Tone/NAC	TX Frequency N/W	TX Tone/NAC	Mode
COMMAND	5	159.120N		151.370N	82.5	A
TACTICAL	8	163.7125	CSQ	163.7125	CSQ	A
AIR TO GROUND	14	166.675N	CSQ	166.6750	CSQ	A
<b>9. Prepared By (Resource Unit Leader)</b>			<b>Approved By (Planning Section Chief)</b>		<b>Date</b>	<b>Time</b>
JUDY SMITH			RHEA COOPER		04/23/2017	1309

**AIR OPERATIONS SUMMARY (ICS220)**

Prepared by: John Mason

Prepared Date: 4/23/2017

Prepared Time: 18:00

<b>1. INCIDENT NAME:</b> West Mims	<b>2. OPS PERIOD DATE:</b> 04/24/17	<b>START TIME:</b> 0800	<b>END TIME:</b> 2000	<b>SUNRISE:</b> 0652	<b>SUNSET TIME:</b> 2002 (Folkston)
<b>3. REMARKS (Safety Notes, Hazards, SEE AND AVOID, GENERAL AVIATION TRAFFIC AND AERIAL HAZARDS)</b>  -Maintain clear communications; confirm that drop location is clear of ground personnel. -Incident Aircraft conduct flight following with Pogo Helibase. -Aerial Ignition Group: Helicopter 7HX with PLDO; FIRB, Shawn Parker.  Pogo Helibase: 912-496-4415  E-MAIL AIRCRAFT COSTS DAILY AT END OF SHIFT TO: <a href="mailto:john_mason@fws.gov">john_mason@fws.gov</a>			<b>4. READY ALERT AIRCRAFT:</b>  <u>7HX</u>  Call 911 to request LIFEFLIGHT aircraft.		<b>5. TFR:</b> 7/4147; Surface to 3500' MSL; See NOTAM for full description. Frequency 120.8500

6. PERSONNEL	NAME	PHONE #	7. FREQUENCIES	AM	FM	8. FIXED-WING- Type/ Make-Model/ N#/ Base
AOBD	Mike Kerrigan	716-957-4705	A/A - Fixed Wing A/A - Rotor/Flt Following/TFR	120.3500 120.8500		AIR ATTACK - ATGS - Mark Nunez / AC690 / N690RA / LCQ 805-975-5227 ATGS - Larry Mars / Kodiak / N420Q / LCQ 479-857-9663
ASGS	John Mason	478-951-7319	A/G 66 A/G 72		166.6750 169.1500	LEAD - ASM (B-6) / C90A / N88XJ / LCQ ASM (B-4) / LCQ ASM (B-28) C90GT / N64GT / LCQ ASM (B-7) C90GT / N513BT / LCQ
HEB1 (Pogo) HEB2 (Lake City)	'Boomer' Marc Rudkin Casey Woodward	307-287-0440 509-899-5434				TANKERS - (T-01) BAE146 / N473NA / LCQ (T-03) BAE146 / N475NA / LCQ (T-41) BAE146 / N471NA / LCQ
	Pogo Helibase	912-496-4415	Deck/TOLC		168.050	
			Air Guard		168.62 (110.9)	

**9. HELICOPTER** Remarks Box Legend: C=Cargo P=Passengers B=Bucket SN=Snorkel R=Rappel H=Hoist SH=Short Haul ME=Medical Evacuation/ Extraction Exu=Exclusive Use

FAA N#	TY	MAKE/ MODEL	BASE	START	READY to FLY	REMARKS	FAA N#	TY	MAKE/ MODEL	BASE	START	READY to FLY	REMARKS
173BH	3	AS350 B3	Pogo	0730	0900	B Exu	4247V	2	S-58JT	Pogo	0730	0900	B CWN
5013G	3	Bell 206 L1	Pogo	0730	0900	B Exu	13FH	1	UH-60A	Lake City (LCQ)	0900	0930	B Exu
27HX	3	Bell 407	Pogo	0730	0900	B Exu	HT1CK	1	SH-3H Sikorsky	Lake City (LCQ)	0900	0930	SN Exu



## SAFETY MESSAGE

WEST MIMS FIRE	April 24, 2017 0800	April 25, 2017 0800
----------------	---------------------	---------------------

Major Hazards and Risks: Driving, Weather, Communication, Fatigue, Accountability

**#10. FIRE FIGHTING ORDER: Fight fire aggressively, having provided for safety first.**

- ❖ **DRIVING:** Drive with **LIGHTS ON**. Watch for narrow bridges, roads and culverts. Pay attention to your surroundings and avoid distractions while driving. Limit use of radios, cell phones, etc. unless absolutely necessary while behind the wheel. **NEVER** text while driving. Do a walk around or use a spotter before moving.
- ❖ **WEATHER:** Stay aware of changing weather conditions. Watch for wind changes and gust. Have a lookout posted. Monitor your local weather conditions.
- ❖ **POOR COMMUNICATIONS:** Even though we have good radio com on most of the fire, there are still locations that may not be covered. Check communications when arriving on scene and if problems are encountered, it may be necessary to ask for additional personnel just to assist with communications. Check batteries in hand-held radios. Use cell phone if necessary.
- ❖ **FATIGUE:** 2-1 Work Ratio—for every 2 hours of work the body needs 1 hour of rest. Bad decisions and accidents start to happen when the brain or your body goes to long without proper rest. Supervisors need to monitor all their firefighters. Take breaks as needed and drink plenty of water.
- ❖ **ACCOUNTABILITY:** Please keep tabs on your folks. Have them check in and check out each day.
- ❖ **INSECTS:** Check yourself for spiders, ticks. If bitten get medical attention. Stay away from bee hives and wildlife, flag any areas of concerns.



**S** top

**T** hink

**O** rganize

**P** roceed

Safety Officer: Ricky Holbrook, Sam McFarland, Nick Tresco, James Williams, Steve Willingham (t), Carson Jones, Charles (Boo) Walker

# INCIDENT RADIO COMMUNICATIONS PLAN (ICS 205)

<b>1. Incident Name:</b>	<b>2. Date/Time Prepared:</b>	<b>3. Operational Period: DAY SHIFT 0800-2000</b>	
WEST MIMS	Date: 04/22/2017 Time: 1309	Date/Time From: 04/24/2017 0800      MON	Date/Time To: 04/25/2017 0800      TUE

**4. Basic Radio Channel Use:**

Zone Group	Ch #	Function	Channel Name/Trunked Radio System Talkgroup	Assignment	RX Freq	RX Tone/NAC	TX Freq	TX Tone/NAC	Mode (A,D, or M)	Remarks
	1	COMMAND	WEST OKEE REP		167.1250	156.7	163.1500	156.7	M	STEPHEN FOSTER STATE PARK
	2	COMMAND	S. FOSTER		159.12		151.37	100	A	WEST
	3	COMMAND	CORNELIA	DIV M	159.120N		151.370N	82.5	A	EAST
	4	COMMAND	BRAGANZA		159.465N		151.145N	114.8	A	NORTH
	5	COMMAND	GFC EDDY	MIMS ICP	159.465N	CSQ	151.1450	123.0	A	WEST MIMS DISPATCH
	6	TRAVEL	GFC TAC1	TRAVEL	159.390N	CSQ	159.3900	156.7	A	GFC MOBILE TO MOBILE
	7	TACTICAL	V FIRE 26	DIV A	154.3025	CSQ	154.3025	156.7	A	
	8	TACTICAL	OSCEOLA PROJECT	DIV N / O	163.7125	CSQ	163.7125	CSQ	A	
	9	TACTICAL	COMPACT	DIV B	159.285N	CSQ	159.2850	156.7	A	
	10	TACTICAL	REFUGE TAC 1	DIV M	168.350N	CSQ	168.350N	CSQ	A	
	11	TACTICAL	REFUGE TAC 2		163.100N	CSQ	163.1000	CSQ	A	
	12	TACTICAL	FFS 199	DIV C	159.4425N	CSQ	159.4425	CSQ	A	
	13	TACTICAL	FFS 200	DIV D	159.4125N	CSQ	159.4125	CSQ	A	
	14	AIR TO GROUND	AIR TO GRD 66		166.675N	CSQ	166.6750	CSQ	A	AIR / GROUND TACTICAL
	15	AIR TO GROUND	AIR TO GRD 72		169.1500	CSQ	169.1500	CSQ	A	AIR / GROUND TACTICAL
	16	AIR GUARD	AIR GUARD		168.6250N	CSQ	168.6250	CSQ	A	EMERGENCY

**5. Special Instructions:**

<b>6. Prepared By</b> (Communications Unit Leader)	Name:	Signature:
ICS 205	IAP Page	Date/Time: 04/22/2017 1309

**PHONE LIST - WEST MIMS FIRE**

<b>Position</b>	<b>Name</b>	<b>Phone Number</b>	<b>Position</b>	<b>Name</b>	<b>Phone Number</b>
<b>COMMAND</b>			<b>OPERATIONS</b>	Land Line	912-637-5112
Incident Commander	Buck Kline	912-678-2694	Ops	Brent McCarty	229-938-8718
Incident Commander (t)	Trent Ingram	229-726-0285	Ops	Shannon Bowman	850-450-0428
Unified IC (Florida FS)	Glen Davis	386-365-4443	Planning Ops	Mike Brunson	706-266-4244
Unified IC (FWS)	Rob Wood	912-346-0978	Field Ops	Heath Morton	423-240-7509
<b>PUBLIC INFORMATION</b>	Land Line	912-637-5108	Branch I Director	Darrell Miller	520-604-7582
<b>Information Desk</b>		904-452-4627	Division A	Allen J. Clay	970-946-1149
Public Information	Susan Granbery	912-515-9203	Division B	Doug Berg	720-987-3697
Public Information (t)	Leland Bass	912-512-3353	Division B (t)	Will Balcomb	928-595-1160
Public Information (t)	Hannah Cowart	904-452-4627	Division C	Chris Roberts	912-213-3138
Refuge Public Info	Susie Heisey	912-286-3110	Division D	Mark Bryant	229-221-1846
<b>SAFETY</b>			Division Swing	Chris Buchanan	478-456-6407
Safety Officer	Ricky Holbrook	936-328-4486	Division Swing	Ron Calhoun	478-290-9755
Safety Officer	Sam McFarland	580-380-9680	Firing Group	Tracey Mobley	706-346-4052
Safety Officer	Nick Tresco	470-365-8807	Firing Group	Blair Jonier	229-237-9026
Safety Officer	Boo Walker	936-544-0348	Florida Contingency	Keith Osteen	
<b>AGENCY REPRESENTATIVES</b>			Branch III Director	Ken Gregor	541-505-4215
FMO	Reese Kerbow	912-276-0167	FWS Contingency	Reggie Forcine	912-614-4041
Refuge Manager	Mike Lusk	912-390-2193	Division M	John A. Johanson	928-595-4448
DNR Agency Liaison	SGT. Patrick Dupree	404-694-5596	Division N/O	Rob Dintaman	928-606-7749
Ware Co EMA	Bill Parham	229-425-4549	Refuge Advisor	Reggie Forcine	912-614-4041
<b>PLANNING</b>	Land Line		<b>AIR OPERATIONS</b>		
Chief	Rhea Cooper	806-632-4687	<b>ATGS</b>	Mark Nunez	805-975-5227
Chief (t)	Keith Murphy	706-318-2967	ATGS	Larry Mars	479-857-9663
Resource Unit Leader	Judy Smith	936-546-1604	AOBD	Mike Kerrigan	716-957-4705
Resource Unit Leader	Mark Harvey	912-637-5112	HEB2	Marc Rudkin	307-287-0440
Situation Unit Leader	Billy Whitworth	936-546-3150	ASGS	John Mason	478-951-7319
Fire Behavior Analyst	Robert Burnside	509-680-0537	<b>LOGISTICS</b>	Land Line	912-637-5107
IMET	Rick Davis	240-778-5277	Chief	Tom Lambert	404-852-6464
GISS	Ethan Robertson	678-552-7342	Chief	Willie Boston	
Demob	Jo Ann Smith	912-637-5113v	Supply Unit	Amy Weaver	770-301-5920
Demob	Jo Ann Smith	912-637-5115f	Facilities Unit	Dennis Evans	478-957-9709
Check In	Lisa Duncan	912-515-5005	Ground Support Unit Leader	Tim Jones	912-512-3357
Training Specialist	Al Hoke		Equipment Mgr.	Ken Edge	478-290-3800
Compter Tech	Ricky Ricks	912-486-4581	Ordering Manager	Will Walker	912-512-3356
FWS READ	Carl Schmidt	478-365-2088	Receiving & Distribution	Denise Croker	770-548-8092
FWS READ	Daniel Barrand	352-490-1959	Base Camp Manager	Jason Harris	912-512-3025
FWS READ	Howard McClough	912-276-0552	Base Camp Manager	Vince Palandri	470-532-8809
FWS READ	Erin Daughtrey	912-223-6752	Communications	Claude Gilleland	678-316-4615
<b>FINANACE</b>	Land Line	912-637-5109	Communications	George Barbee	706-329-0105
Chief	Reggie Lanier	912-314-1085	Communications	Kelly Towe	478-308-4770
Chief	Grace Reid	229-561-0295	RADO	Emily Hamilton	912-515-4035
Time Unit Leader	Libby Bagwell	912-637-5109	Medical Unit Leader	Clint Rogers	912-259-2117
Cost Unit Leader	Jason Gillis		Food Unit Leader	Brantley Smith	912-512-3352
Comp/Claims	Eileen Crouse	470-532-8798	Security Mananger	Jim Maloney	970-216-9858
Equipment Time Recorder	Joe Fincher	229-310-3426	Security Mananger (t)	Pamela Garrison	912-288-7481
Equipment Time Recorder	Teresa Kegl	912-637-5109	Security	Chris Cooley	912-660-9397
Personel Time Recorder	Doug Chassereau	912-687-4112	Security	John Bacca	505-690-3222
			Security	Shaw Davis	912-312-5227

<b>ICS 206 MedPlan</b>	1. Incident Name West Mims Fire	2. Date Prepared 4/22/17	3. Time Prepared 1600	4. Operational Period Day shift/ Night shift	
<b>Incident Ambulances</b>					
	Location			Paramedics Yes No	
Clinch Co. EMS(West Ambulance)	Council RD(470)532-8806			X	
Golden Isles EMS(East Ambulance)	POGO Helibase (912)602-9224			X	
Mike Coplin (Line Paramedic)Medic 1	DIV C&D(912)512-3354 0800-2000 hrs			X	
Walter Reed (Line Paramedic)Medic 2	DIV A&B(912)512-3142 0800-2000 hrs			X	
Ben Palm (Line Paramedic)Medic 3	DIV C&D(229)561-4224 2000-0800 hrs			X	
Mike Connolly (Line Paramedic)Medic 4	DIV A&B(303)746-2926 2000-0800 hrs			X	
Linda Kramer (Line Paramedic)Medic 5	DIV M&N 0800-2000 hrs POGO Helibase(470)532-8799			X	
<b>6. Transportation</b>					
Name	Address	Phone	Paramedics Yes No		
Ware Co. EMS (North Side)	Waycross, GA (911 to activate)	912-281-9467	x		
Baker Co. EMS (South Side)	MacClenny, FL (911 to activate)	904-259-6111	x		
Charlton Co. EMS (East Side)	Folkston, GA (911 to activate)	912-496-3125	x		
<b>B. Air Evacuation Services</b>					
Trauma 1	Jacksonville, FL (800)223-4878 96175 Cessna DR Yulee, FL			X	
LifeFlight	Jacksonville, FL (877)870-7779 (35 mins/air)			x	
Shands CAir	1515 W. Archer RD Gainesville, FL 32608			x	
<b>7. Hospitals</b>					
Name	Address	Travel Time Air Ground	Phone	Helipad Yes No	Burn Center Yes No
Satilla Regional Level III Trauma Cntr	410 Darling Ave Waycross, GA N 31° 13.452 W 82° 20.875	15 min 45 min	912-283-3030	x	x
Clinch Memorial (West Side) Level IV Trauma Cnt	1050 Valdosta Highway Homerville GA	25 min	912-487-5211 ext.4502	x	x
Ed Frazier Hospital (South Side) Level III Trauma Cntr	159 N 3 <sup>rd</sup> Str. MacClenny, FL N 30° 28.482 W 82° 11.896	15 min 30 min	904-259-3151	x	x
Shands Burn Cntr Level I Trauma Cntr	1515 Archer RD Gainesville, FL 32608 N 29 30.360 W 82 20.550	45 min 90 min	352-265-0300	x	X
Shands Hospital Level I Trauma Cntr	655 W 8 <sup>th</sup> STR Jacksonville , FL 32209 N 30 37.500 W81 31.819	45 min 120 min	800-223-4878	x	X
<b>9.HeliSpots</b>					
Pocket HeliSpot (West Side of Fire) N30° 47.50 W82°22.658			Drop Point 1 N30° 30.929 W82°14.174		
Golf Course HeliBase N30° 41.42 W82° 33.97 (Hwy 441 @ Golf Course)			Drop Point2 N30°30.837 W82 30.700		
POGO HeliBase (East Side of Fire) N30°44.26 W82°07.69			Drop Point 3 N30° 41.257 W82°28.833		
Waycross Airport N31° 15.00 W82° 24.02					
Prepared by (Medical Unit Leader) Clint Rogers MEDL(t) Jesus Hernandez MEDL			10. Reviewed by (Safety Officer) RICKY HOLBROOK SOF2		

# 9 Line Medical Incident Report

## Medical Incident Report

**FOR ALL MEDICAL EMERGENCIES: IDENTIFY ON SCENE INCIDENT COMMANDER BY NAME AND POSITION AND ANNOUNCE "MEDICAL EMERGENCY" TO INITIATE RESPONSE FROM IMT COMMUNICATIONS/DISPATCH.**

**Use items one through nine to communicate situation to communications/dispatch.**

**1. CONTACT COMMUNICATIONS/DISPATCH**

*Ex: "Communications, Div. Alpha. Stand-by for Priority Medical Incident Report." (If life threatening request designated frequency be cleared for emergency traffic.)*

**2. INCIDENT STATUS:** *Provide incident summary and command structure.*

<b>Nature of Injury/Illness</b>		<i>Describe the injury (Ex: Broken leg with bleeding)</i>
Incident Name		<i>Geographic Name + "Medical" (Ex: Trout Meadow Medical)</i>
Incident Commander		<i>Name of IC</i>
Patient Care		<i>Name of Care Provider (Ex: EMT Smith)</i>

**3. INITIAL PATIENT ASSESSMENT:** *Complete this section for each patient. This is only a brief, initial assessment. Provide additional patient info after completing this 9 Line Report.*

Number of Patients:	Male / Female	Age:	Weight:
Conscious? <input type="checkbox"/> YES <input type="checkbox"/> <b>NO = MEDEVAC!</b>			
Breathing? <input type="checkbox"/> YES <input type="checkbox"/> <b>NO = MEDEVAC!</b>			
Mechanism of Injury: <i>What caused the injury?</i>			
Lat/Long (Datum WGS84) <i>Ex: N 40° 42.45' x W 123° 03.24'</i>			

**4. SEVERITY OF EMERGENCY, TRANSPORT PRIORITY**

SEVERITY	TRANSPORT PRIORITY
<input type="checkbox"/> <b>URGENT-RED Life threatening injury or illness.</b> <i>Ex: Unconscious, difficulty breathing, bleeding severely, 2° – 3° burns more than 4 palm sizes, heat stroke, disoriented.</i>	Ambulance or MEDEVAC helicopter. Evacuation need is <b>IMMEDIATE.</b>
<input type="checkbox"/> <b>PRIORITY-YELLOW Serious Injury or illness.</b> <i>Ex: Significant trauma, not able to walk, 2° – 3° burns not more than 1-2 palm sizes.</i>	Ambulance or consider air transport if at remote location. Evacuation may be <b>DELAYED.</b>
<input type="checkbox"/> <b>ROUTINE-GREEN</b> Not a life threatening injury or illness. <i>Ex: Sprains, strains, minor heat-related illness.</i>	Non-Emergency. Evacuation considered <b>Routine of Convenience.</b>

**5. TRANSPORT PLAN:**

**Air Transport:** (Agency Aircraft Preferred)

<input type="checkbox"/> Helispot	<input type="checkbox"/> Short-haul/Hoist	<input type="checkbox"/> Life Flight	<input type="checkbox"/> Other
<b>Ground Transport:</b>			
<input type="checkbox"/> Self-Extract	<input type="checkbox"/> Carry-Out	<input type="checkbox"/> Ambulance	<input type="checkbox"/> Other

**6. ADDITIONAL RESOURCE/EQUIPMENT NEEDS:**

<input type="checkbox"/> Paramedic/EMT(s)	<input type="checkbox"/> Crew(s)	<input type="checkbox"/> SKED/Backboard/C-Collar
<input type="checkbox"/> Burn Sheet(s)	<input type="checkbox"/> Oxygen	<input type="checkbox"/> Trauma Bag
<input type="checkbox"/> Medication(s)	<input type="checkbox"/> IV/Fluid(s)	<input type="checkbox"/> Cardiac Monitor/AED
<input type="checkbox"/> Other (i.e. splints, rope rescue, wheeled litter)		

**7. COMMUNICATIONS:**

Function	Channel Name/Number	Receive (Rx)	Tone/NAC *	Transmit (Tx)	Tone/NAC *
<i>Ex: Command</i>	<i>Forest Rpt, Ch. 2</i>	<i>168.3250</i>	<i>110.9</i>	<i>171.4325</i>	<i>110.9</i>
COMMAND					
AIR-TO-GRND					
TACTICAL					

\*(NAC for digital radio system)

**8. EVACUATION LOCATION:**

Lat/Long (Datum WGS84) <i>EX: N 40 42.45' x W 123 03.24'</i>	
Patient's ETA to Evacuation Location:	
Helispot/Extraction Size and Hazards:	

**9. CONTINGENCY:**

**Considerations:** *If primary options fail, what actions can be implemented in conjunction with primary evacuation method? Be thinking ahead...*

**REMEMBER:** Confirm ETA's of resources ordered  
Act according to your level of training  
Be Alert. Keep Calm. Think Clearly. Act Decisively.

NSN 7540-01-119-5628  
50297-102

OPTIONAL FORM 297 (Rev. 7-90)  
USDA/USDI

**EMERGENCY EQUIPMENT SHIFT TICKET**  
NOTE: The responsible Government Officer will update this form each day or shift and make initial and final equipment inspections.

1. AGREEMENT NUMBER Applicable if contractor		2. CONTRACTOR (name) FS FWS, GFC, DOF -	
3. INCIDENT OR PROJECT NAME West Mims		4. INCIDENT NUMBER GA OKR 017006	
6. EQUIPMENT MAKE Ford/Chery/Ram		7. EQUIPMENT MODEL F250, etc	
9. SERIAL NUMBER Unit #		10. LICENSE NUMBER	
12. DATE M/O/DAY/YR		13. EQUIPMENT USE START STOP WORK SPECIAL	
14. REMARKS (released, down time and cause, problems, etc.)		15. EQUIPMENT STATUS a. Inspected and under agreement <input type="checkbox"/> b. Released by Government <input type="checkbox"/> c. Withdrawn by Contractor <input type="checkbox"/> Have you been inspected	
16. INVOICE POSTED BY (Recorder's initials)		17. CONTRACTOR'S OR AUTHORIZED AGENT'S SIGNATURE Operator's Signature	
		18. GOVERNMENT OFFICER'S SIGNATURE Supervisor's Signature	
		19. DATE SIGNED	

**FINANCE**

# Here

**CREW TIME REPORT**

(1) CREW NAME What you are		(2) CREW NUMBER 0 Eor Cjt				
(3) OFFICE RESPONSIBLE FOR FINE OKEE NWTR		(4) FIRE NAME West Mims				
(5) FIRE NUMBER Gt OKR 017006						
RE-MARKS NO.	NAME OF EMPLOYEE	CLASSIFICATION	DATE (6)		DATE (7)	
			ON	OFF	ON	OFF
	Your Name	position	0800	1200	1230	2000
(11) REMARKS Must show Break						

(12) OFFICER-IN-CHARGE (Signature)  
Supervisor Signature

(13) TITLE (Officer-in-Charge)  
SOS. FIVE

(14) NAME (Person Posting to Emergency Time Report)

(15) DATE



## West Mims Fire Information

Lost and Found box has been established in the PIO office.

	<p>InciWeb <a href="https://inciweb.nwcg.gov/incident/5153/">https://inciweb.nwcg.gov/incident/5153/</a></p>
	<p>Facebook <a href="https://www.facebook.com/OkefenokeeWildlifeRefuge">https://www.facebook.com/OkefenokeeWildlifeRefuge</a></p>

**Fire Information Line: 904-452-4627**

#westmimsfire

#okefenokee

Please email us your videos and pictures:

[okefirepio@gmail.com](mailto:okefirepio@gmail.com)

### Fire Information

Phone: 904-452-4627; email: [okefirepio@gmail.com](mailto:okefirepio@gmail.com)

Follow Us on Facebook: @Okefenokee Wildlife Refuge #westmimsfire #okefenokee

Inciweb: <https://inciweb.nwcg.gov/incident/5153/>

Your **Training Specialist** Is Here to Answer Your Questions Relating to Training Assignments, Task Books, and Coaching/Evaluation Matters.



**BE SURE THAT IQCS AND IQS CAN BE UPDATED CORRECTLY!!**

If You Need Evaluation Forms (ICS-225), or  
To See What's Needed For Your NEXT Position.

Visit The **Training Specialist** In the PLANNING SECTION  
Next to CHECK-IN and DEMOB



## How to Get Supplies

- ✓ **Must have a General Message Form (ICS Form 213)**
    - What you are requesting and how many (be specific)
    - Needed Date and Time (ASAP doesn't work)
    - Delivery location or if you will be picking up the order
    - Point of Contact in case there are any questions about the order
    - If item is being positioned on the line (pump kit, sprinkler kit, etc...) provide a location including GPS coordinates
    - Proper Authorization (Legible name and O#)
  - ✓ **Proper Authorization**
    - All accountable property (anything with a serial number such as chainsaws, pump kits, etc...) must have a DIVS (or above) signature and O# on the 213
    - Anything below accountable property must have single resource boss (or above) signature and O# on the 213
- 

- ✓ **Go to Medical Unit for:**
  - Sunscreen
  - Bug Spray
  - Hand Sanitizer
  - MoleSkin
  - Basic Over-the-Counter Medicines
  - Any medical welfare related needs
- ✓ **Go to Communications Unit for:**
  - Batteries
  - Any radio related issues
- ✓ **Go to Ground Support Unit for:**
  - any equipment repair and supply related requests and they will ensure that the proper paperwork is in place
- ✓ **Go to Supply Unit for anything else**

The Logistics Section is here to support you and will work diligently to make sure that you have everything you need to do your jobs in a safe and efficient manner. Do not hesitate to contact us for any incident related service and support needs.

Willie Boston  
LSC

Tom Lambert  
LSC

West Mims Fire  
GA-OKR-017066  
Day/Night  
NAD 83  
UTM Zone 17N

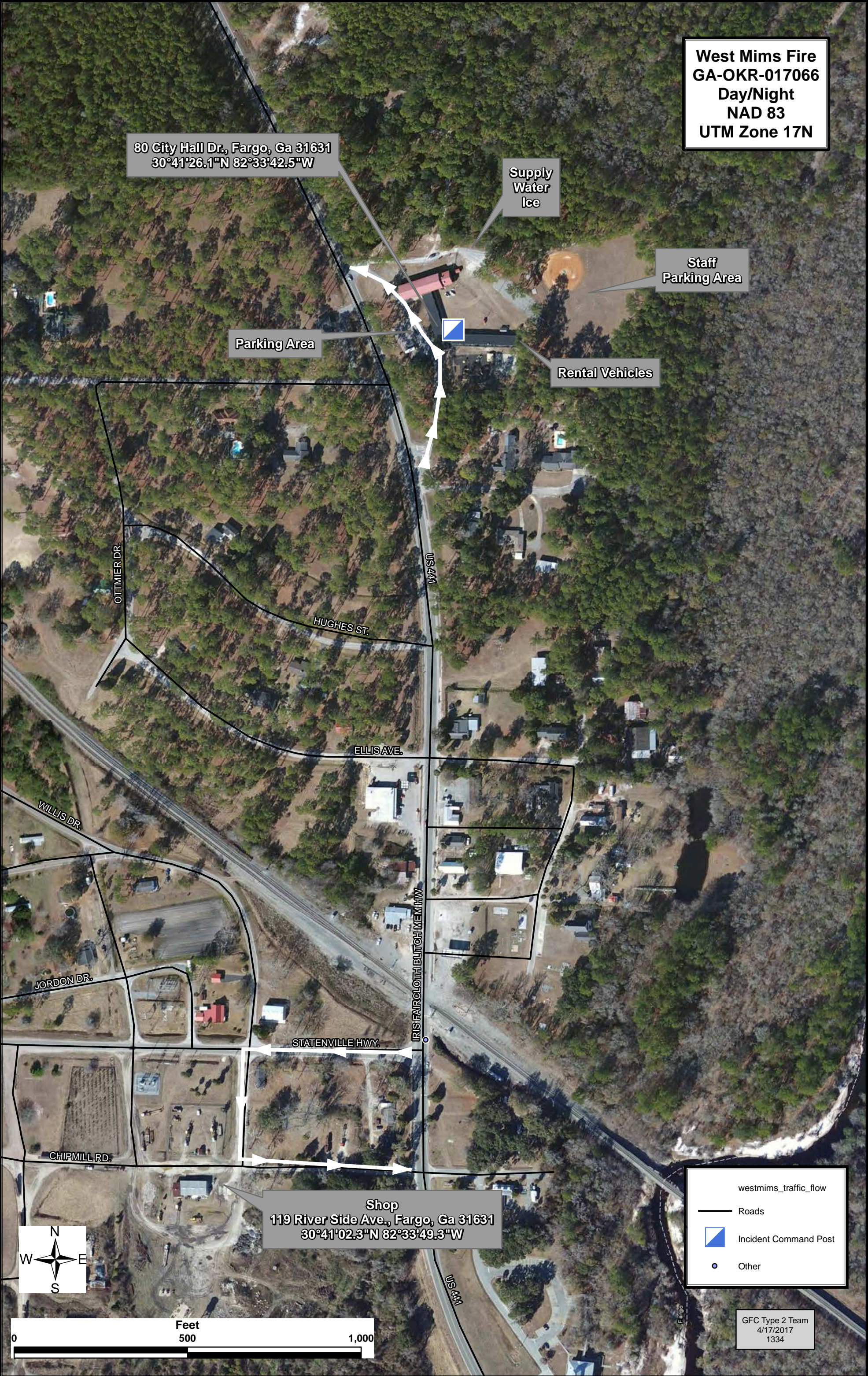
80 City Hall Dr., Fargo, Ga 31631  
30°41'26.1"N 82°33'42.5"W

Supply  
Water  
Ice

Staff  
Parking Area

Parking Area

Rental Vehicles

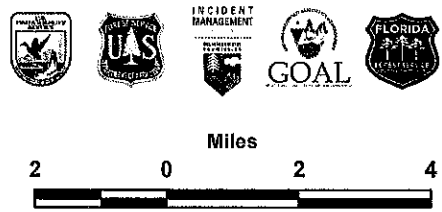


Shop  
119 River Side Ave., Fargo, Ga 31631  
30°41'02.3"N 82°33'49.3"W

westmims\_traffic\_flow  
— Roads  
■ Incident Command Post  
● Other

GFC Type 2 Team  
4/17/2017  
1334

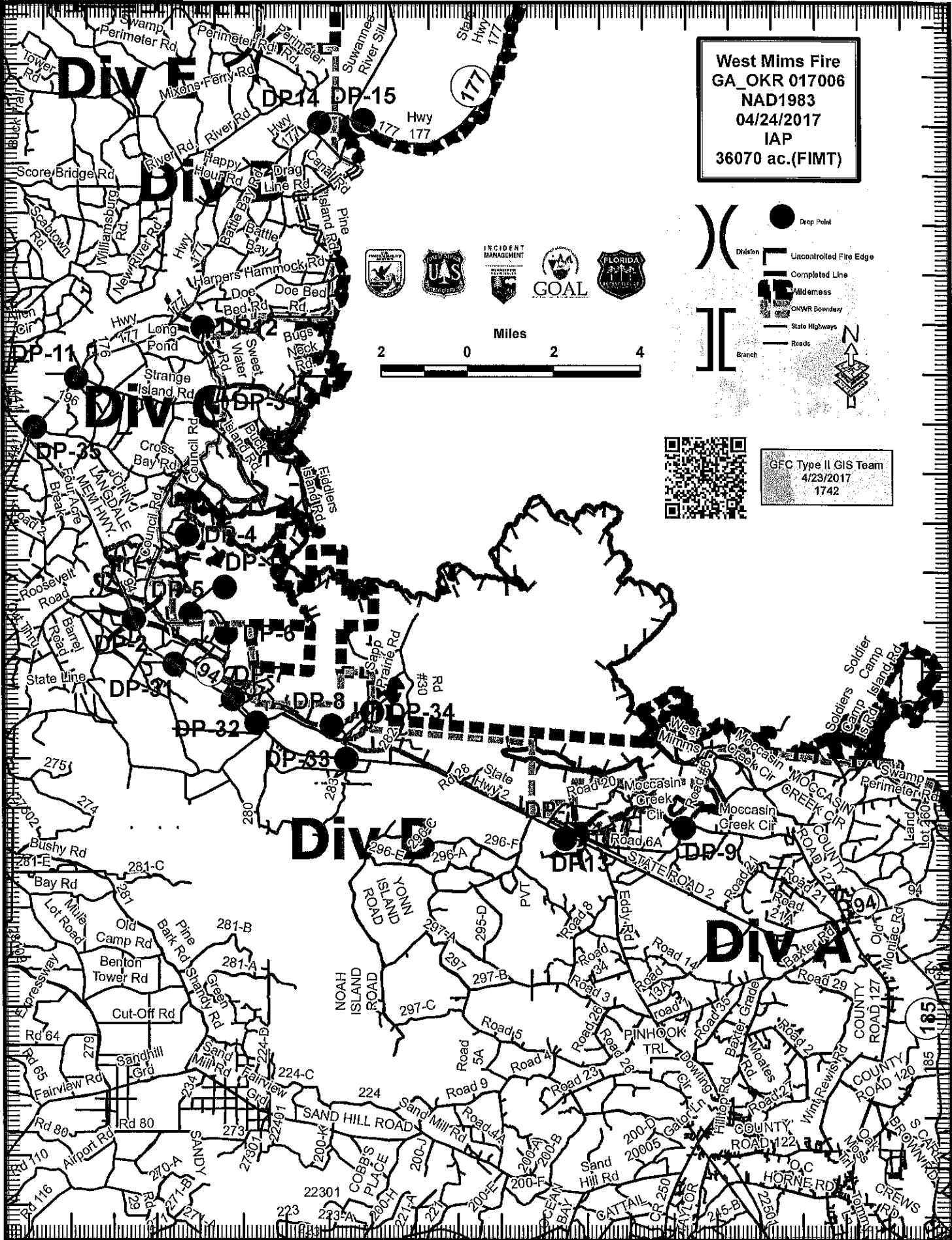
West Mims Fire  
GA\_OKR 017006  
NAD1983  
04/24/2017  
IAP  
36070 ac.(FIMT)

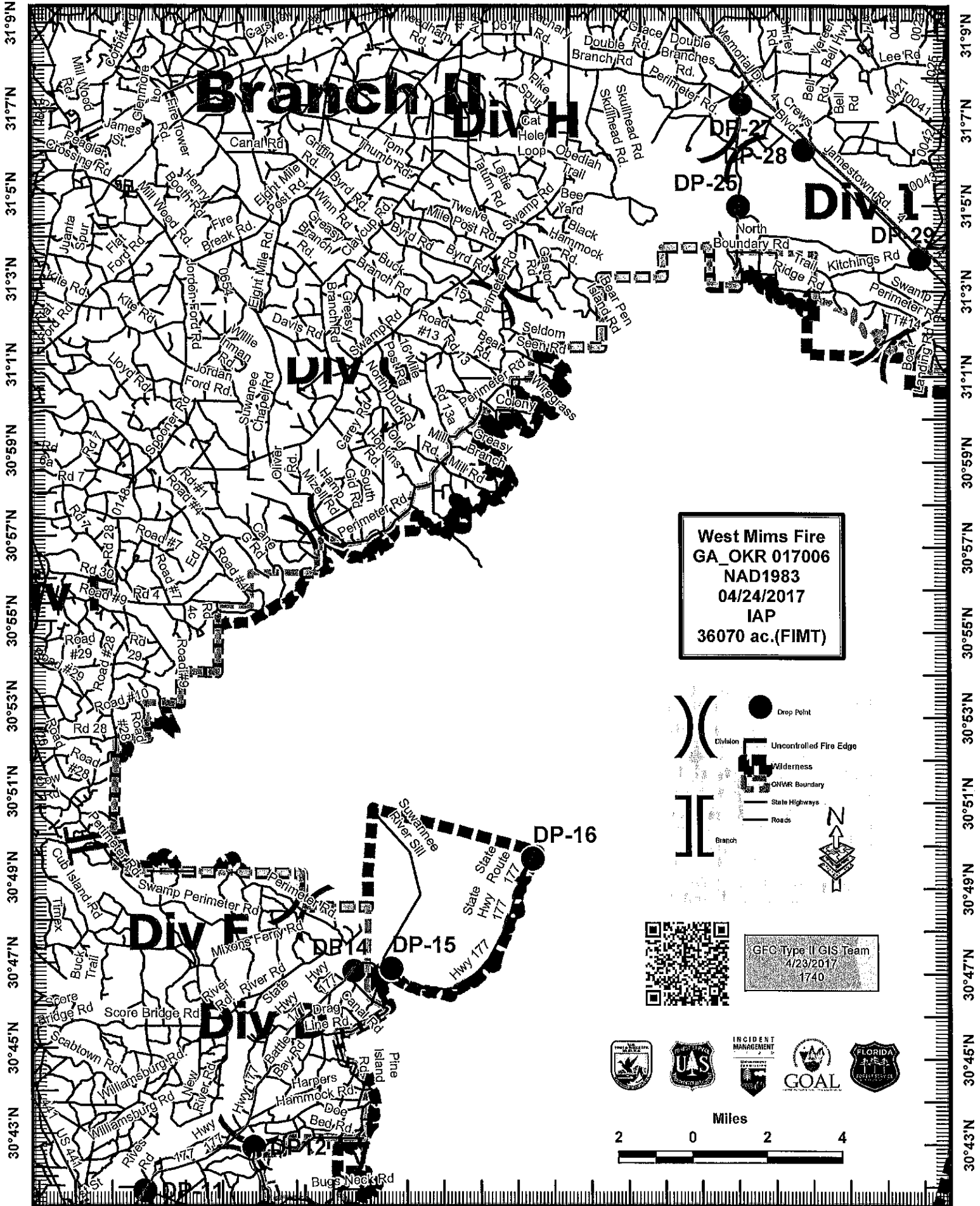


Legend for map symbols: Drop Point, Uncontrolled Fire Edge, Completed Line, Allidmess, CNWR Boundary, State Highways, Roads, Branch. Includes a north arrow.



GFC Type II GIS Team  
4/23/2017  
1742





West Mims Fire  
 GA\_OKR 017006  
 NAD1983  
 04/24/2017  
 IAP  
 36070 ac.(FIMT)

Legend:

- Drop Point
- Division
- Uncontrolled Fire Edge
- Wilderness
- ONWR Boundary
- State Highways
- Roads
- Branch



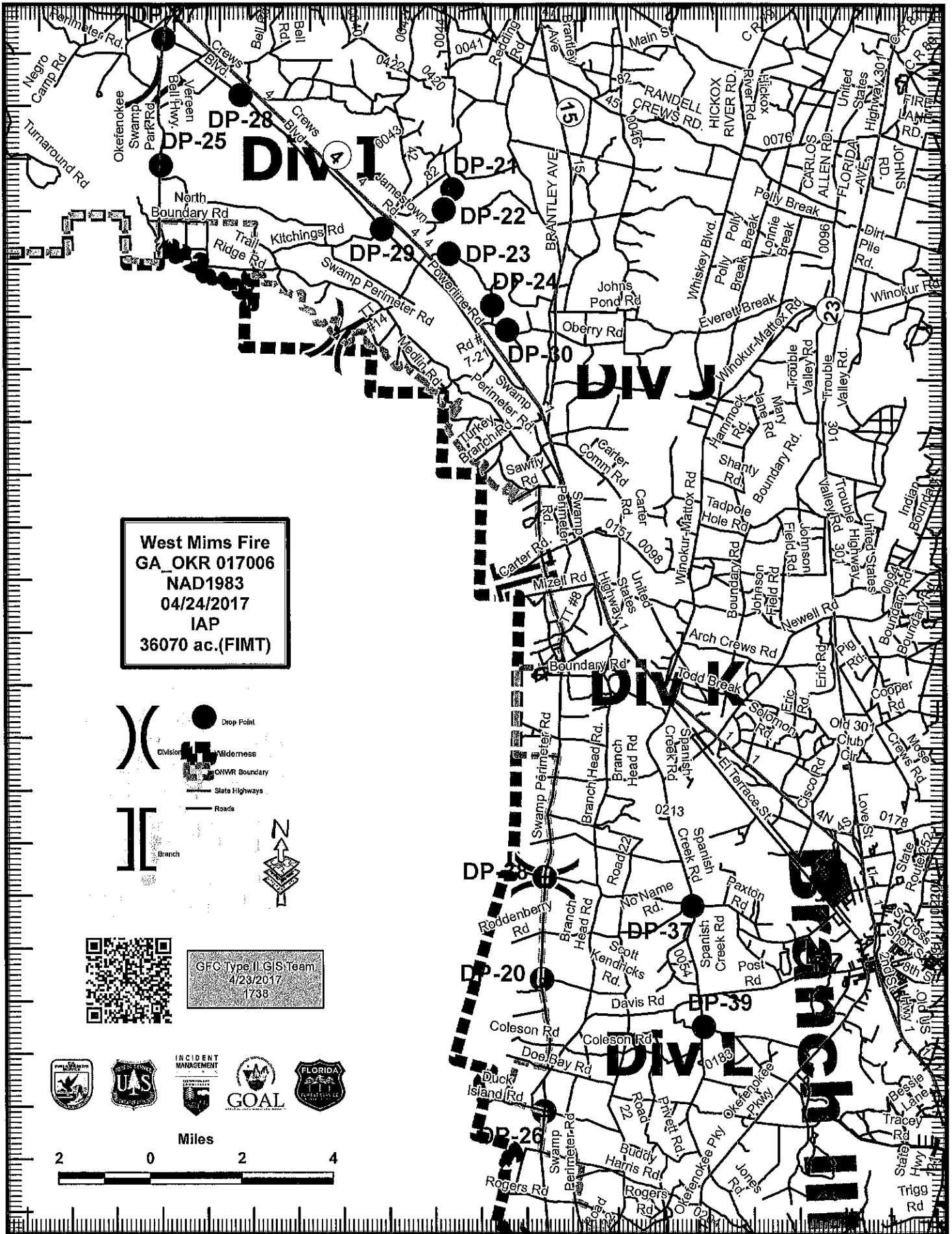
GFC Type II GIS Team  
 4/23/2017  
 1740



82°18'W 82°16'W 82°14'W 82°12'W 82°10'W 82°8'W 82°6'W 82°4'W 82°2'W 82°0'W

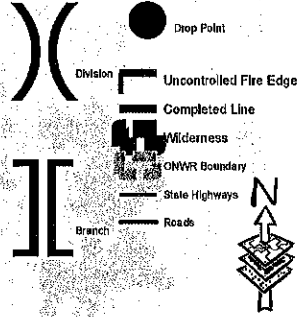
31°7'N 31°6'N 31°5'N 31°4'N 31°3'N 31°2'N 31°1'N 31°0'N 30°58'N 30°56'N 30°54'N 30°52'N 30°50'N 30°48'N 30°46'N

31°8'N 31°7'N 31°6'N 31°5'N 31°4'N 31°3'N 31°2'N 31°1'N 31°0'N 30°58'N 30°56'N 30°54'N 30°52'N 30°50'N 30°48'N 30°46'N

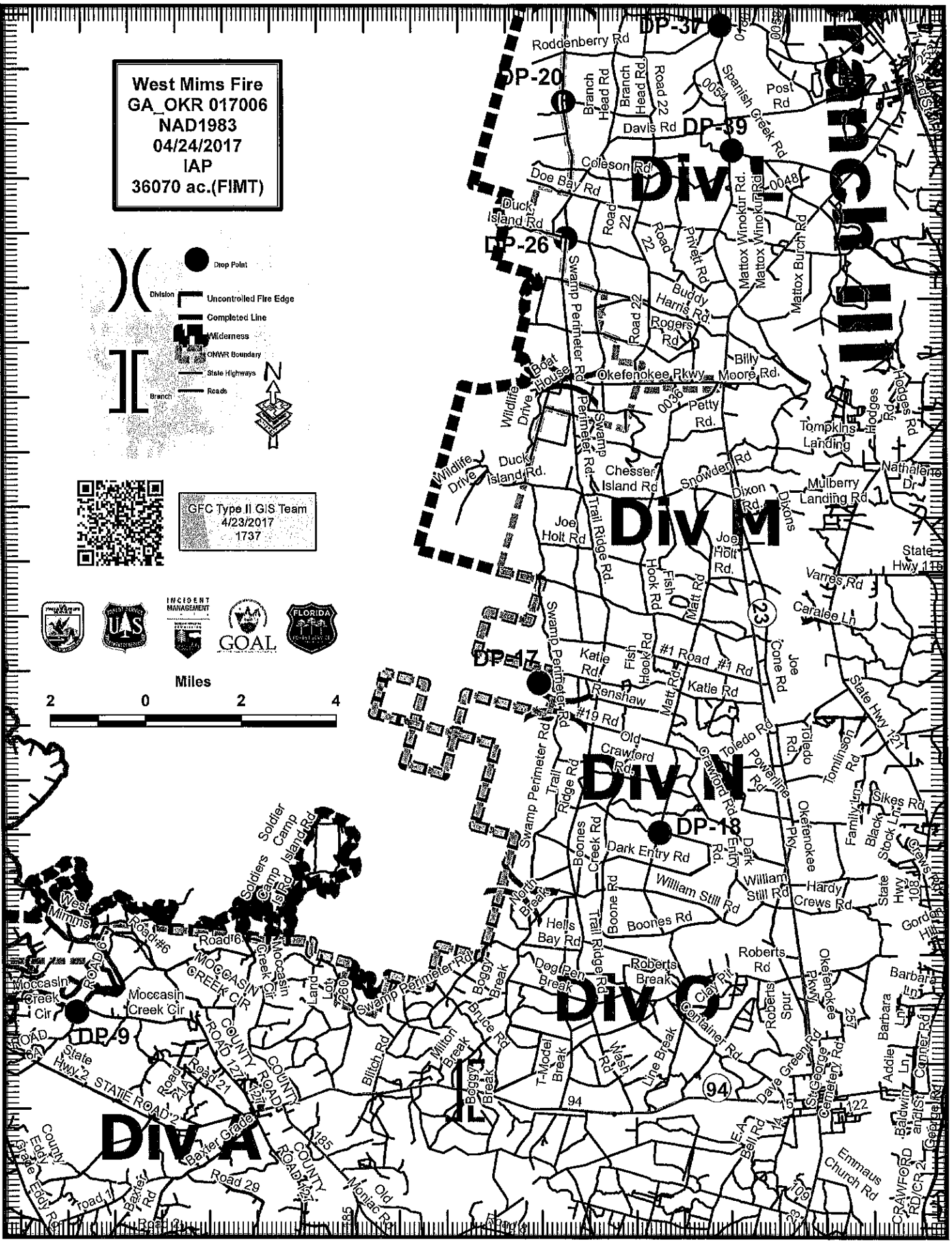


GFC Type II GIS Team  
 4/23/2017  
 1738

West Mims Fire  
GA\_OKR 017006  
NAD1983  
04/24/2017  
IAP  
36070 ac.(FIMT)



GFC Type II GIS Team  
4/23/2017  
1737



## **Demob Message**

Demob Date is the day you travel home with travel completed before 2200.

### **Air Travel**

If you require Air Travel, you must come by or call **Demob, 912-637-5113**, no later than 3 days before you plan to travel. You must provide your name as it appears on your DL and DOB.

**4/25/2017**

**TENTATIVE RELEASE**

**WEST MIMS US-GA-OKR-017006**

OVERHEAD

O-8      0800      (ENGB)      SMITH, MATTHEW G.

04/26/2017

TENTATIVE RELEASE

WEST MIMS US-GA-OKR-017006

**OVERHEAD**

O-107	0600	(DIVS)	BALCOM, WILLIAM C
O-14	0600	(FFT2)	LOWEY, ANTHONY KEGAN
O-18.32	0800	(COMT)	BARBEE, GEORGE BUREN
O-35	0800	(DZOP)	BENTLEY, HARRY
O-18.16	0800	(DIVS)	BRYANT, MARK L
O-29	0800	(SECM)	COOLEY, CHRISTOPHER L
O-13	0800	(FFT2)	DAVIS, GERALD RAY
O-18.23	0800	(SCKN)	DUNCAN, LISA
O-11	0800	(ORDM)	DUNLAP, JOHN
O-18.38	0800	(FACL)	EVANS, DENNIS M
O-18.48	0800	(EQTR)	FINCHER, JOSEPH A
O-18.45	0800	(COST)	GILLIS, JASON P
O-18.27	0800	(TNSP)	HOKE, AL
O-18.35	0800	(GSUL)	JONES, TIMOTHY D
O-21	0800	(FSC2)	LANIER, REGGIE
O-18.12	0800	(DIVS)	MOBLEY, TRACY
O-18.9	0800	(OSC2)	MORTON, JUSTIN H
O-18.14	0800	(DIVS)	ROBERTS, CHRIS
O-54	0800	(STEQ)	WELLS JR, KENNETH MACK



<b>UNIT LOG</b>		1. Incident Name	2. Date Prepared	3. Time Prepared
4. Unit Name/Designators		5. Unit Leader (Name and Position)		6. Operational Period
<b>7. Personnel Roster Assigned</b>				
Name		ICS Position		Home Base
<b>8. Activity Log</b>				
Time		Major Events		
9. Prepared by (Name and Position)				