

West Mims Fire



Incident Action Plan

Operational Periods
May 8, 2017 to May 9, 2017
0830 – 2030/2030 – 0830

QR for IAP



GA-OKR-017006

FWS FFF2000000KYJ70

USFS PRKYJ717_1502 (P)

NPS PFFSKJ7017.00.1

QR for Maps



Schedule

0830 Morning Briefing
1200 C & G
1500 Pre Planning Meeting
1700 Planning Meeting
1900 Night Briefing @ Bethea





To: All Incident Personnel, West Mims Fire 2017

As the Unified Command Incident Commanders, we have a policy of “zero tolerance” of inappropriate behavior during incident operations. Any form of harassment, discriminatory practices, or disrespectful behavior will not be tolerated. Known or reported acts will be dealt with appropriately.

We are particularly concerned about the perception that alcohol has a place in any of the Incident facilities. It is not appropriate to indulge in alcoholic beverages during any fire assignment.

The National Team from the Southern Region has a policy of “NO ALCOHOL” from the time of dispatch until the time of physical release from the Incident. Members of the Team voluntarily comply with this policy; all incident personnel will be expected to do so also.

We endorse, support, and expect an attitude of mutual respect for all Incident personnel and the public we serve. We also, endorse the attitude and work ethic that places “Safety First, every time on every Incident.” We expect nothing less.

/s/ Mike Dueitt
/s/ Rick Dolan
/s/ Trent Ingram
Incident Commanders

FIRE BEHAVIOR FORECAST	
FORECAST NUMBER: #19	TYPE OF FIRE: Wildland
FIRE NAME: West Mims	OPERATIONAL PERIOD: 05/08/2017
DATE ISSUED: 05/07/2017	TIME ISSUED: 1800
UNIT: Okfenokee National Wildlife Refuge	SIGNED: Gary Jarvis FBAN 251.288.1084
FUEL ASSUMPTIONS: Primary fuels consist of shrub, shrub with pine overstory and timber litter. Current fuel conditions are favorable for very active fire behavior within all fuel types. The current drought conditions have led to both live and dead fuel moistures to reach critical levels. Expect all fuels to burn readily, including those that appear green.	
The fuel moisture for today is: Calculated 1 hr fuel 2%, 10 hr fuel 6%, 100 hr fuel 14%	
ERC levels have been above 97 Percentile KBDI 715	
Critical fire behavior thresholds: 1 HR Fuel Moisture <6%, RHs below 40% and a Dispersion Index greater than 60.	
WEATHER: Sunny. Warmer and very dry. WIND (20 FT): NNW 6-8 mph gusts to 15 mph. MAX TEMPERATURES: 87-91 MIN RH: 18-23% LAL: 1 CHANCE RAIN: 0% DISPERSION (MAX): 75 MIXING HEIGHT: 7400 TRANSPORT WINDS: NNW 10-15 mph	
General Fire Behavior Forecast: ... High Potential for large fire growth...EXTREME CONDITIONS Active burning should be expected in all areas of the fire that have available fuel. If the fire gets established in pine plantations very high rates of spread should be expected. Short and long range spotting should be expected ahead of the fire.	
SPECIFIC: DIV A/O: These divisions will be very active today. Fire will continue to burn toward swamp perimeter RD. On the west portion of DIV A, watch for re-burn along the perimeter. Be on the lookout for long range spotting from interior burning. DIV B/C: Re-burn potential is very high today. DIV D/E: Billy's Island will continue flanking and backing to the south at a moderate intensity. DIV M/N/O/Z: This area will be very active today. Winds will push smoke across containment lines. Expect spotting to occur when this happens. The control lines will be tested today due to high winds and low humidity.	
PREDICTIONS FOR MOST ACTIVE TIME OF PEAK BURNING PERIOD USING WEATHER FROM INCIDENT IMET	
Fuel Model	Fire Behavior
Shrub (Swamp)	ROS 10 to 20 ch/hr (.1 to .3 mph), FL 4-6 ft.
Timber w/shrub (palmetto)	ROS 22 to 60 ch/hr, (.3 to .8 mph) FL 6-9 ft
Timber Litter (Pine needles) Reburn	ROS 2 to 6 ch/hr (<.1 mph), FL 2-3 ft
Spotting	.2 miles shrub and .5 miles torching pine
Probability of Ignition	100%
AIR OPERATIONS: No issues for aviation. Clear Sky.	
FIRE BEHAVIOR SAFETY: LCES. Have your lookouts posted, communications in place and tested, escape routes identified and tested and safety zones identified and clearly marked. It's a heads-up day!!!!	

INCIDENT OBJECTIVES (ICS 202)

1. Incident Name:	2. Operational Period: DAY SHIFT 0830-2030	
WEST MIMS	Date/Time From: 05/08/2017 0830 MON	Date/Time To: 05/08/2017 2030 MON
3. Objective(s):		
<ul style="list-style-type: none"> • Provide for the safety and security of incident personnel and public in all incident operations through sound risk assessment and hazard mitigations. • Maintain a positive working relationship with all adjacent landowners, cooperators State and Federal partners. Inform, involve and communicate incident planning and operations with all partners. • Confine all fires that are within the Okefenokee National Wildlife Refuge, inside the Refuge and/or inside the swamp edge break if possible. • In cooperation with local timberland owners, use full suppression strategies and tactics to minimize damage to private timberlands and improvements and to prevent fires outside the Refuge from entering the Refuge. • Assist in management and suppression of additional fires (new starts or breakouts) in the vicinity as approved by Agency Administrators and Unified Incident Commanders. • Protect all cultural and archeological sites and structures within the refuge. • Manage the fires cost-effectively consistent with the values at risk. • Implement structure protection as necessary for at-risk facilities and communities. • Coordinate suppression actions with assigned Refuge Resource Advisors to protect endangered species. • Conduct all operations in a harassment-free environment. There will be a no tolerance atmosphere for harassment, alcohol, or illegal drug use. Everyone will be treated with dignity and respect. 		
4. Operational Period Command Emphasis:		
Branch III keep fire North of Hwy 94, West of St Mary's River, and South of #19 road Keep fire within the Okefenokee Refuge Swamp Edge Break Boundary. Respond to initial attack fires on new starts within: *South of Suwannee Canal *Within the Okefenokee jurisdictional boundaries *Within state properties inside Perimeter Road *North of GA 94/FL 2		
General Situational Awareness:		
Utilize; confine, contain, and point source protection strategies and tactics that commit operations personnel only where and when they can be successful, under conditions where important values at risk are protected with the least exposure.		
5. Site Safety Plan Required? Yes <input type="checkbox"/> No <input checked="" type="checkbox"/>		
Approved Site Safety Plan(s) Located at:		
6. Incident Action Plan (the items checked below are included in this Incident Action Plan):		
<input checked="" type="checkbox"/> ICS 202 <input checked="" type="checkbox"/> ICS 203 <input checked="" type="checkbox"/> ICS 204 <input checked="" type="checkbox"/> ICS 205 <input type="checkbox"/> ICS 205A <input checked="" type="checkbox"/> ICS 206	<input type="checkbox"/> ICS 207 <input checked="" type="checkbox"/> ICS 208 <input checked="" type="checkbox"/> ICS 220 <input checked="" type="checkbox"/> Map/Chart <input checked="" type="checkbox"/> Weather Forecast/Tides/Currents	Other Attachments: <input checked="" type="checkbox"/> PIO MESSAGE <input checked="" type="checkbox"/> FINANCE MESSAGE <input checked="" type="checkbox"/> TENTATIVE DEMOB <input checked="" type="checkbox"/> MAP
7. Prepared by: BRIAN ELDREDGE Position/Title: PSC1	Signature:	
8. Approved by Incident Commander:	Name: MIKE DUEITT	Signature:
ICS 202	IAP Page	Date/Time: 05/07/2017 2000

ORGANIZATION ASSIGNMENT LIST (ICS 203)

1. Incident Name: WEST MIMS		2. Operational Period: DAY SHIFT 0830-2030	
		Date/Time From: 05/08/2017 0830	Date/Time To: 05/08/2017 2030
		MON	MON
3. Incident Commander(s) and Command Staff:		6. Logistics Section:	
IC/UC	MICHAEL DUEITT; BUCK KLINE; RICK DOLAN MIKE GOICOECHEA (T)	CHIEF	JOHNNY SMITH; RICK BARRETT (T)
SAFETY OFFICER	BRAD LIDELL; MICHAEL COOK; TONY RIVERS (T); CHARLIE PATTERSON (T)	LOGS CHIEF EAST	MICHAEL BURCHARD
INFORMATION OFFICER	CATHERINE HIBBARD; BONNIE STRAWSER; MICHAEL DAVIS (T)	SERVICE BRANCH DIRECTOR	JOE WALKER
LIAISON OFFICER	JD LEE KEITH LAWRENCE	SUPPLY UNIT	MARK MORGAN
THSP	ROAD MAINTENANCE MIKE JOHNSON	FACILITIES UNIT	ISH ENNIS
		GROUND SUPPORT UNIT	PATRICK WRIGHT; CHARLES WEATHERS
		COMMUNICATIONS UNIT	JERRY PATRICK; BARRY STEARNS (T)
		MEDICAL UNIT	FRED ALDER
		COMT	RAY ADAMS; ROY FORTENBERRY
		FOOD UNIT	ANDREW BOGGS
		ORDM	NINA GAINEY; LISA MEEKINS (T)
		RCDM	JOHN HAWKINS; JIM GACEY; MARC PRATT (T)
		EQPM	KIRBY HENNINSEN; JASON MCHAN
		RADO	
4. Agency/Organization Representative(s):		7. Operations Section:	
Agency/Organization	Name	OPS SECTION CHIEF	VICKI EDGE; LARRY SMITH (T)
GFC PROTECTION	FRANK SORRELLS	FIELD OPS	JAMES DURRWACHTER; SHANNON BOWMAN (T)
OKE REF MGR/ASSIST	MICHAEL LUSK; SARA CLARDY	PLANNING OPS	STEVE WEAVER; JEREMY BRAND (T)
OKE REF FMO	REESE KERBOW	NIGHT OPS SECTION CHIEF (BRANCH I)	JAMES SCHWARTZ
GOAL	JIM BARRETT	NIGHT OPS SECTION CHIEF (BRANCH III)	BILL WOODYARD
FLDOF	JOHN RAULERSON	Branch	I
GEMA	DIANE ADAMS	BRANCH DIRECTOR	DARRELL MILLER; ROBERT TRINCADO
NORFOLK SOUTHERN	CHAD EDWARDS	DIVISION/GROUP	DIV B TIM STILTNER; DAVID QUESINBERRY (T)
CLINCH CO EMA	WILL JOYCE; RANDY PATTEN	DIVISION/GROUP	DIV C BERT PLANTE; ROBERT CLAYTOR (T)
GADOT	TREVOR BROWN	DIVISION/GROUP	DIV D JOEL BURGETT; HEATHER GRIFFIN (T)
CHARLTON CO EMA	BRUCE YOUNG	DIVISION/GROUP	DIV NIGHT PAUL MANCUSO
		DIVISION/GROUP	DIV NIGHT RUSSELL COPP
5. Planning Section:		Branch	II
CHIEF	BRIAN ELDREDGE	Branch	III
PSC2	JIM LINARDOS	BRANCH DIRECTOR	RON SMITH
RESOURCES UNIT	MISSY FORDER; DONNA THOMAS	DIVISION/GROUP	STRUCTURE PROTECTION CRAIG ROBERTSON BILL KORNRUMPH
STATUS CHECKIN	CARLA ROBERTS; SUE SOBIESKI; SHANEEN MOORE (T); BRANDEN TOLVER (T)	DIVISION/GROUP	DIV A JAMES ROURKS
SITUATION UNIT	TERRY BOWERMAN KEVIN HIERS (T)	DIVISION/GROUP	DIV M/N JOHN A JOHANSON
DEMOBILIZATION UNIT	KAREN DAVIS		
DOCUMENTATION UNIT	GORDON MARTIN		
ITSS	TONY FARMER TERRANCE CHAPLIN (T)		
TRAINING SPECIALIST	SEAN WOLF; GREG SEAMON		
GIS SPECIALIST	ANDREW THOMPSON, DAVID JONES JORDAN HERRIN (T)		
INCIDENT METEOROLOGIST	ANGELA ENYEDI		
FIRE BEHAVIOR ANALYST; AIR RESOURCE ADVISOR	GARY JARVIS; MATT FILBERT (T) T. WICKMAN; THSP-ARA		
9. Prepared By:	Name: DONNA THOMAS	Position/Title: RESL	Signature:
ICS 203	IAP Page	Date/Time: 05/07/2017 2000	

ORGANIZATION ASSIGNMENT LIST (ICS 203)

1. Incident Name:		2. Operational Period: DAY SHIFT 0830-2030	
WEST MIMS		Date/Time From: 05/08/2017 0830 MON	Date/Time To: 05/08/2017 2030 MON
DIVISION/GROUP	DIV O	ROBERT THORP	
DIVISION/GROUP	DIV Z	TRENT INGRAM	
DIVISION/GROUP	IA	DONNIE HARRIS	
DIVISION/GROUP	DIV NIGHT	SHANE STURGILL	
DIVISION/GROUP	DIV NIGHT	MICHAEL CACHERO	
THSP - ROAD MAINTENANCE	MIKE JOHNSON		
7b. Air Operations Branch:			
AIR OPS BRANCH DIRECTOR	TIMOTHY FAUST		
AIR SUPPORT GROUP SUPERVISOR	JOHN MASON		
AIR ATTACK SUPERVISOR	MARK NUNEZ; CHRIS WORREL; MIKE BOT (T)		
HEB1 POGO	RICK JACOBS; COREY LEWIS		
8. Finance/Administration Section:			
CHIEF	BONNY JOHNSON		
PROCUREMENT UNIT	JAMES MEREDITH; THERESA HOOD		
CONTRACTING OFFICER	THERESA HOOD		
COST UNIT	CAROLYN DETWILER; JENNY CROSS (T)		
TIME UNIT	JEAN FRICK		
COMPENSATION UNIT	VERMA COLEMAN STACEY EATON (T)		
LOCAL FINANCE LIAISON	REGGIE LANIER		
9. Prepared By:	Name: DONNA THOMAS	Position/Title: RESL	Signature:
ICS 203	IAP Page	Date/Time: 05/07/2017 2000	

Division/Group Assignment List (ICS 204 WF)

1. Incident Name:			3.			
WEST MIMS			Branch:		Division/Group:	
2. Operational Period: DAY SHIFT 0830-2030			I		B	
Date/Time From: 05/08/2017 0830 MON		Date/Time To: 05/08/2017 2030 MON				
4. Operations Personnel						
PLANNING OPERATIONS CHIEF		STEVE WEAVER JEREMY BRAND (T)		OPERATIONS CHIEF		VICKI EDGE; JIM DURRWACHTER L. SMITH (T); S. BOWMAN (T)
BRANCH DIRECTOR		DARRELL MILLER ROBERT TRINCADO		DIVISION/GROUP SUPERVISOR		TIM STILTNER, DAVID QUISENBERRY (T)
SAFETY		BRAD LIDELL; MIKE COOK TONY RIVERS (T)		AIR OPS BRANCH DIRECTOR		TIM FAUST
5. Resources Assigned this Period						
Strike Team / Task Force / Resource Designator		LWD	Leader	Number Persons	Drop Off PT./Time	Pick Up PT./Time
STEN O-325		05/19	JOE FOWLER	1	DP#2/1000	DP#2/2000
TFLD (T) O-340		05/18	BRAD WHITTINGTON	1	DP#2/1000	DP#2/2000
ENG6 - AR-OZF - PH - E-641 E-76		05/21	MIKE KOCK	3	DP#2/1000	DP#2/2000
ENG6- SMR #4461 E-1		05/12	TRAVIS L. POLLARD	2	DP#2/1000	DP#2/2000
ENG6 - NC-POR PLE1 E-2		05/21	ANTHONY DAVIS	2	DP#2/1000	DP#2/2000
ENG6 SOUTHEAST FOREST RESOURCES E-58		05/12	J HAWTHORNE	3	DP#2/1000	DP#2/2000
WTS1- SUPPORT WILDLANDS FIRE SERVICE I E-132		05/14	DOUG SCOTT	1	DP#2/1000	DP#2/2000
STEN O-353		05/21	ANDREW C MILLER	1		
ENG6 - 104719 E-149		05/08	GRIFFITH WILLIAM	3	DP#2/1000	DP#2/2000
ENG6 - SCS #14248 E-148		05/14	JEREMY GANTT	2	DP#2/1000	DP#2/2000
ENG6 - WILDLANDS FIRE SERVICE - D65331 - 1 E-144		05/12	GARRISON	2	DP#2/1000	DP#2/2000
SOF2 O-252 208-954-4105		05/14	CHRIS CHURCH	1	DP#2/1000	DP#2/2000
EMPF E-316 619-933-5546		05/16	MARTIN CORRILO	1	DP#2/1000	DP#2/2000
6. Control Operations/Work Assignments:						
Purpose: Keep fire North of GA 94/FL 2						
Task: Patrol and mop up within 50 ft of fire perimeter. Respond to any new starts within Div. Determine and report contained line to Planning OSC1.						
8. Division/Group Communication Summary						
Function	Channel	RX Frequency N/W	RX Tone/NAC	TX Frequency N/W	TX Tone/NAC	Mode
COMMAND	2	159.12		151.37	100	A
TACTICAL	9	159.285	CSQ	159.2850	156.7	A
AIR TO GROUND	14	166.675	CSQ	166.6750	CSQ	A
AIR TO GROUND	15	169.1500	CSQ	169.1500	CSQ	A
9. Prepared By (Resource Unit Leader)			Approved By (Planning Section Chief)		Date	Time
DONNA THOMAS			BRIAN ELDREDGE		05/07/2017	2000

Division/Group Assignment List (ICS 204 WF)

1. Incident Name:			3.			
WEST MIMS			I	B		
2. Operational Period: DAY SHIFT 0830-2030						
Date/Time From: 05/08/2017 0830	MON	Date/Time To: 05/08/2017 2030	MON			
4. Operations Personnel						
PLANNING OPERATIONS CHIEF	STEVE WEAVER JEREMY BRAND (T)		OPERATIONS CHIEF	VICKI EDGE; JIM DURRWACHTER L. SMITH (T); S. BOWMAN (T)		
BRANCH DIRECTOR	DARRELL MILLER ROBERT TRINCADO		DIVISION/GROUP SUPERVISOR	TIM STILTNER, DAVID QUISENBERRY (T)		
SAFETY	BRAD LIDELL; MIKE COOK TONY RIVERS (T)		AIR OPS BRANCH DIRECTOR	TIM FAUST		
6. Control Operations/Work Assignments:						
End State: Confine fire perimeter to reduce threats and minimize damage to private timberlands and resources values at risk.						
7. Special Instructions:						
Ensure LCES are in place before operations begin & stay hydrated. Drive defensively and with lights on at all times. Identify escape routes.						
Medical Emergency Channel: Command ETA for Ambulance to Scene: Air: 10 mins Ground: 15 mins Approved Helispot: Drop Point 1 Lat: N 30 30.929 Long: W 82 14.174 Primary - Ambulance is ground contact with air ambulance Secondary - IWI- IC or approved person will use channel 16 (Air Guard) for ground contact with air ambulance						
8. Division/Group Communication Summary						
Function	Channel	RX Frequency N/W	RX Tone/NAC	TX Frequency N/W	TX Tone/NAC	Mode
COMMAND	2	159.12		151.37	100	A
TACTICAL	9	159.285	CSQ	159.2850	156.7	A
AIR TO GROUND	14	166.675	CSQ	166.6750	CSQ	A
AIR TO GROUND	15	169.1500	CSQ	169.1500	CSQ	A
9. Prepared By (Resource Unit Leader)			Approved By (Planning Section Chief)		Date	Time
DONNA THOMAS			BRIAN ELDREDGE		05/07/2017	2000

Division/Group Assignment List (ICS 204 WF)

1. Incident Name:			3.			
WEST MIMS			Branch:		Division/Group:	
2. Operational Period: DAY SHIFT 0830-2030			I		C	
Date/Time From: 05/08/2017 0830 MON		Date/Time To: 05/08/2017 2030 MON				
4. Operations Personnel						
PLANNING OPERATIONS CHIEF		STEVE WEAVER JEREMY BRAND (T)		OPERATIONS CHIEF		VICTA EDGE; JIM DURRWACHTER L. SMITH (T), S. BOWMAN (T)
BRANCH DIRECTOR		DARRELL MILLER ROBERT TRINCADO		DIVISION/GROUP SUPERVISOR		BERT PLANTE, ROBERT CLAYTOR (T)
SAFETY		BRAD LIDELL, MICHAEL COOK TONY RIVERS (T)		AIR OPS BRANCH DIRECTOR		TIM FAUST
5. Resources Assigned this Period						
Strike Team / Task Force / Resource Designator		LWD	Leader	Number Persons	Drop Off PT./Time	Pick Up PT./Time
TFLD - O-86		05/09	DANIEL CEDENO	1	DP#3/1000	DP#3/2000
ENG6 - WILDLANDS FIRE SRVC INC-162856 - 22 E-146		05/09	DAN MENA	3	DP#3/1000	DP#3/2000
ENG6 E-454		05/21	TYLER GALLAGHER		DP#3/1000	DP#3/2000
ENG6 - 61 - VASHP E-450		05/21	JOE JARRELLS		DP#3/1000	DP#3/2000
WTS2 SUPPORT STRICKLANDS TRACTOR E-265		05/21	LUCIUS CORBITT	1	DP#3/1000	DP#3/2000
WTS2 - SUPPORT TIPTON & YOUNG E-135		05/08	KEN SWAIN	1	DP#3/1000	DP#3/2000
TFLD - O-250		05/12	LONNIE CALLOWAY	1	DP#3/1000	DP#3/2000
TPL3 DODGE 71 E-93		05/12	JAMES L. GIBBS JR.	1	DP#3/1000	DP#3/2000
TPL2 LONG 72 - E-94		05/12	TERRY HAZARD	1	DP#3/1000	DP#3/2000
TPL3 EMANUEL 70 E-95		05/12	FRANKLIN BEASLEY	1	DP#3/1000	DP#3/2000
EMPF - E-375 470-532-8807		05/16	GARY ALLEN FORD	1	DP#3/1000	DP#3/2000
SOF2 - O-244 229-561-2259		05/13	MICKEY BUNTON	1	DP#3/1000	DP#3/2000
6. Control Operations/Work Assignments:						
Purpose: Keep fire East of swamp edge break						
Task: Patrol and mop up within 50 ft of fire perimeter. Respond to any new starts within Div. Prep fireline around logging debris as needed coordinating with logging operators. Determine and report contained line to Planning OSC1.						
8. Division/Group Communication Summary						
Function	Channel	RX Frequency N/W	RX Tone/NAC	TX Frequency N/W	TX Tone/NAC	Mode
COMMAND	2	159.12		151.37	100	A
TRAVEL	6	159.390	CSQ	159.3900	156.7	A
TACTICAL	12	159.4425	CSQ	159.4425	CSQ	A
AIR TO GROUND	14	166.675	CSQ	166.6750	CSQ	A
AIR TO GROUND	15	169.1500	CSQ	169.1500	CSQ	A
9. Prepared By (Resource Unit Leader)			Approved By (Planning Section Chief)		Date	Time
MISSY FORDER			BRIAN ELDREDGE		05/07/2017	2000

Division/Group Assignment List (ICS 204 WF)

1. Incident Name:			3.			
WEST MIMS			I	C		
2. Operational Period: DAY SHIFT 0830-2030						
Date/Time From:	MON	Date/Time To:	MON			
05/08/2017 0830		05/08/2017 2030				
4. Operations Personnel						
PLANNING OPERATIONS CHIEF	STEVE WEAVER JEREMY BRAND (T)		OPERATIONS CHIEF	VICTA EDGE; JIM DURRWACHTER L. SMITH (T), S. BOWMAN (T)		
BRANCH DIRECTOR	DARRELL MILLER ROBERT TRINCADO		DIVISION/GROUP SUPERVISOR	BERT PLANTE, ROBERT CLAYTOR (T)		
SAFETY	BRAD LIDELL, MICHAEL COOK TONY RIVERS (T)		AIR OPS BRANCH DIRECTOR	TIM FAUST		
6. Control Operations/Work Assignments:						
End State: Confine fire perimeter to reduce threats and minimize damage to private timberlands and resources values at risk.						
7. Special Instructions:						
<p>Ensure LCES are in place before operations begin & stay hydrated. Drive defensively and with lights on at all times. Identify escape routes. Logging operations have started. Stay clear of cutting areas. DOZ1 w/KG Blade Ware 76, E-138, Hilton Bennett is working with Gilyard Logging Operations on Fortner Property. Please be mindful of logging operations that will be ongoing. Ensure that all personnel stay clear of felling operations. Pay attention for potential reburn in logging area. Work with Gilyard Logging foreman on any suppression actions within the logging area.</p> <p>Medical Emergency Channel: Command ETA for Ambulance to Scene: Air: 10 mins Ground: 25 mins Approved Helispot: Drop Point 3 Lat: N 30 41.257 Long: W 82 28.833</p> <p>Primary - Ambulance is ground contact with air ambulance Secondary - IWI- IC or approved person will use channel 16 (Air Guard) for ground contact with air ambulance</p>						
8. Division/Group Communication Summary						
Function	Channel	RX Frequency N/W	RX Tone/NAC	TX Frequency N/W	TX Tone/NAC	Mode
COMMAND	2	159.12		151.37	100	A
TRAVEL	6	159.390	CSQ	159.3900	156.7	A
TACTICAL	12	159.4425	CSQ	159.4425	CSQ	A
AIR TO GROUND	14	166.675	CSQ	166.6750	CSQ	A
AIR TO GROUND	15	169.1500	CSQ	169.1500	CSQ	A
9. Prepared By (Resource Unit Leader)			Approved By (Planning Section Chief)		Date	Time
MISSY FORDER			BRIAN ELDREDGE		05/07/2017	2000

Division/Group Assignment List (ICS 204 WF)

1. Incident Name:			3.			
WEST MIMS			Branch:		Division/Group:	
2. Operational Period: DAY SHIFT 0830-2030			I		D	
Date/Time From: 05/08/2017 0830	MON	Date/Time To: 05/08/2017 2030	MON			
4. Operations Personnel						
PLANNING OPERATIONS CHIEF		STEVE WEAVER JEREMY BRAND (T)		OPERATIONS CHIEF		
BRANCH DIRECTOR		DARRELL MILLER ROBERT TRINCADO (T)		DIVISION/GROUP SUPERVISOR		
SAFETY		BRAD LIDDEL, MICHAEL COOK TONY RIVERS (T)		AIR OPS BRANCH DIRECTOR		
				VICTA EDGE, JIM DURRWACHTER L. SMITH (T); S. BOWMAN; (T)		
				JOE BURGETTE,		
				TIM FAUST		
5. Resources Assigned this Period						
Strike Team / Task Force / Resource Designator		LWD	Leader	Number Persons	Drop Off PT./Time	Pick Up PT./Time
TFLD O-255		05/13	TROY HELMS	1	DP3/1000	DP3/2000
COLQUIT 86 SUPPLY TRUCK E-118		05/21	CHRIS	1	DP3/1000	DP3/2000
ENG6 - OSCEOLA - 641 E-157		05/14	JASON MARTIN	3	DP3/1000	DP3/2000
ENG6 - WILDLANDS FIRE SERVICE E-262		05/20	CHAD ANDERSON	2	DP3/1000	DP3/2000
ENG6 - ATLANTIC WILDFIRE RESOURCES E-264		05/20	SAMUEL ELKINS	3	DP3/1000	DP3/2000
EMPF E-375 470-532-8807		05/17	GARY ALLEN FORD	1	DP3/1000	DP3/2000
SOF2 O-244 229-561-2259		05/13	MICKEY BUNTON	1	DP3/1000	DP3/2000
STEN O-360		05/21	ERIC WARD			
6. Control Operations/Work Assignments:						
Purpose: Keep fire South of Suwannee Canal.						
Task: Coordinate monitoring Billies Island by air with Air Tactical Group Supervisor.						
Assure structure protection is in place						
Patrol and mop up within 50' of fire perimeter						
Respond to any new starts within division						
Determine and report contained line to Planning Operations Section Chief.						
End State: Confine fire perimeter to reduce threats and minimize damage to private timberlands and resource values at risk.						
7. Special Instructions:						
Ensure LCES are in place before operations begin & stay hydrated. Drive defensively and with lights on at all times. Identify escape routes.						
8. Division/Group Communication Summary						
Function	Channel	RX Frequency N/W	RX Tone/NAC	TX Frequency N/W	TX Tone/NAC	Mode
COMMAND	2	159.12		151.37	100	A
TRAVEL	6	159.390	CSQ	159.3900	156.7	A
TACTICAL	13	159.4125	CSQ	159.4125	CSQ	A
AIR TO GROUND	14	166.675	CSQ	166.6750	CSQ	A
AIR TO GROUND	15	169.1500	CSQ	169.1500	CSQ	A
9. Prepared By (Resource Unit Leader)			Approved By (Planning Section Chief)		Date	Time
DONNA THOMAS			BRIAN ELDREDGE		05/07/2017	2000

Division/Group Assignment List (ICS 204 WF)

1. Incident Name:			3.			
WEST MIMS			I	D		
2. Operational Period: DAY SHIFT 0830-2030						
Date/Time From:	MON	Date/Time To:	MON			
05/08/2017 0830		05/08/2017 2030				
4. Operations Personnel						
PLANNING OPERATIONS CHIEF	STEVE WEAVER JEREMY BRAND (T)		OPERATIONS CHIEF	VICTA EDGE, JIM DURRWACHTER L. SMITH (T); S. BOWMAN; (T)		
BRANCH DIRECTOR	DARRELL MILLER ROBERT TRINCADO (T)		DIVISION/GROUP SUPERVISOR	JOE BURGETTE,		
SAFETY	BRAD LIDDEL, MICHAEL COOK TONY RIVERS (T)		AIR OPS BRANCH DIRECTOR	TIM FAUST		
7. Special Instructions:						
<p>Medical Emergency Channel: Command ETA for Ambulance to Scene: Air: 10 mins Ground: 25 mins Approved Helispot: Drop Point 3 Lat: N 30 41.257 Long: W 82 28.833 Primary - Ambulance is ground contact with air ambulance Secondary - IWI- IC or approved person will use channel 16 (Air Guard) for ground contact with air ambulance</p>						
8. Division/Group Communication Summary						
Function	Channel	RX Frequency N/W	RX Tone/NAC	TX Frequency N/W	TX Tone/NAC	Mode
COMMAND	2	159.12		151.37	100	A
TRAVEL	6	159.390	CSQ	159.3900	156.7	A
TACTICAL	13	159.4125	CSQ	159.4125	CSQ	A
AIR TO GROUND	14	166.675	CSQ	166.6750	CSQ	A
AIR TO GROUND	15	169.1500	CSQ	169.1500	CSQ	A
9. Prepared By (Resource Unit Leader)			Approved By (Planning Section Chief)		Date	Time
DONNA THOMAS			BRIAN ELDREDGE		05/07/2017	2000

Division/Group Assignment List (ICS 204 WF)

1. Incident Name:			3.			
WEST MIMS			I		Division/Group: FL FFS CONTINGENCY	
2. Operational Period: DAY SHIFT 0830-2030						
Date/Time From: 05/08/2017 0830 MON		Date/Time To: 05/08/2017 2030 MON				
4. Operations Personnel						
PLANNING OPERATIONS CHIEF		STEVE WEAVER JEREMY BRAND (T)		OPERATIONS CHIEF		
BRANCH DIRECTOR		DARRELL MILLER ROBERT TRINCADO		DIVISION/GROUP SUPERVISOR		
SAFETY		BRAD LIDELL; MIKE COOK TONY RIVERS (T)		AIR OPS BRANCH DIRECTOR		
				VICTA EDGE; JIM DURRWACHTER L. SMITH (T), S. BOWMAN (T)		
				GLENN DAVIS JOHN RAULERSON		
				TIM FAUST		
5. Resources Assigned this Period						
Strike Team / Task Force / Resource Designator		LWD	Leader	Number Persons	Drop Off PT./Time	Pick Up PT./Time
STDZ			ANDY LAMBORN	1	JOHN BETHEA/0800	JOHN BETHEA/2000
TPL2 JOHN BETHEA				1	JOHN BETHEA/0800	JOHN BETHEA/2000
TPL2				1	JOHN BETHEA/0800	JOHN BETHEA/2000
DOZ2				1	JOHN BETHEA/0800	JOHN BETHEA/2000
DOZ2				1	JOHN BETHEA/0800	JOHN BETHEA/2000
DOZ2				1	JOHN BETHEA/0800	JOHN BETHEA/2000
DOZ1				1	JOHN BETHEA/0800	JOHN BETHEA/2000
ENG6				2	JOHN BETHEA/0800	JOHN BETHEA/2000
SOF2 O-253		05/16	KEVIN LABELLA	1	/0800	/2000
6. Control Operations/Work Assignments:						
Purpose: To provide suppression support for incident						
Task: Resources are staged at John Bethea State Forest headquarters. Resources are ready upon calling						
End State: Ready support resources to respond to protect structures, timberland and resources values at risk.						
7. Special Instructions:						
Ensure LCES are in place before operations begin. Drive defensively and with lights on at all times.						
Contact Rick Dolan, FL FSS Unified IC 352-222-4420 when activating contingency resources.						
8. Division/Group Communication Summary						
Function	Channel	RX Frequency N/W	RX Tone/NAC	TX Frequency N/W	TX Tone/NAC	Mode
TRAVEL	6	159.390	CSQ	159.3900	156.7	A
AIR TO GROUND	14	166.675	CSQ	166.6750	CSQ	A
AIR TO GROUND	15	169.1500	CSQ	169.1500	CSQ	A
9. Prepared By (Resource Unit Leader)			Approved By (Planning Section Chief)		Date	Time
DONNA THOMAS			BRIAN ELDREDGE		05/07/2017	2000

Division/Group Assignment List (ICS 204 WF)

1. Incident Name:			3.			
WEST MIMS			I & III		Division/Group: ROAD MAINTENANCE	
2. Operational Period: DAY SHIFT 0830-2030						
Date/Time From: 05/08/2017 0830 MON		Date/Time To: 05/08/2017 2030 MON				
4. Operations Personnel						
OPERATIONS CHIEF		VICTA EDGE, JIM DURRWACHTER L. SMITH (T), S. BOWMAN (T)		BRANCH DIRECTOR		
THSP ROADS		MIKE JOHNSON		AIR ATTACK SUPERVISOR		
5. Resources Assigned this Period						
Strike Team / Task Force / Resource Designator		LWD	Leader	Number Persons	Drop Off PT./Time	Pick Up PT./Time
WET 'N RED, LLC - 58592 E-365		05/16	ALLEN WEST	14	10/1000	10/2000
WATER TENDER - SUPPORT - T2 - BONNELL SAND & GRAVEL, I E-366		05/16	JOE BONNELL	1	10/1000	10/2000
GRADER - R.O.T. RANCH CONSTRUCTION E-234		05/04	TRAVIS WORRELL		10/1000	10/2000
HEQB O-290		05/16	WESTON VANDENABEELE	1	10/1000	10/2000
HEQB - O-308		05/16	CHARLES DAVIS	1	10/1000	10/2000
GRADER - WILDLANDS FIRE SERVICE INC - 6198TE E-136		05/12	HEATH PARKER		10/1000	10/2000
ROAD GRADER - T1 - TIPTON & YOUNG CONSTRUCTION COMPANY E-419		05/20		1	10/1000	10/2000
6. Control Operations/Work Assignments:						
<p>Purpose: To keep roads accessible for access to fire perimeter</p> <p>Task: Maintain Soldier Island, Moccasin Creek, Council Rd, and Rd 6 in Div A as priority Assess single lane bridges and culverts for safety and maintenance needs. Provide adequate signage for traffic safety. All DIVS to assess Rd maintenance needs for OSC prioritization.</p> <p>End State: Access Roads are in a safe travel worthy condition for suppression activities coordinated with private landowners as appropriate.</p>						
7. Special Instructions:						
8. Division/Group Communication Summary						
Function	Channel	RX Frequency N/W	RX Tone/NAC	TX Frequency N/W	TX Tone/NAC	Mode
COMMAND	5	159.465	CSQ	151.1450	123.0	A
TRAVEL	6	159.390	CSQ	159.3900	156.7	A
TACTICAL	7	154.3025	CSQ	154.3025	156.7	A
9. Prepared By (Resource Unit Leader)			Approved By (Planning Section Chief)		Date	Time
DONNA THOMAS			BRIAN ELDREDGE		05/07/2017	2000

Division/Group Assignment List (ICS 204 WF)

1. Incident Name:			3.			
WEST MIMS			Branch:		Division/Group:	
2. Operational Period: DAY SHIFT 0830-2030			III		A	
Date/Time From: 05/08/2017 0830 MON		Date/Time To: 05/08/2017 2030 MON				
4. Operations Personnel						
PLANNING OPERATIONS CHIEF		STEVE WEAVER JEREMY BRAND (T)		OPERATIONS CHIEF		VICTA EDGE, JIM DURRWACHTER L. SMITH (T), S. BOWMAN (T)
BRANCH DIRECTOR		RON SMITH		DIVISION/GROUP SUPERVISOR		JAMES ROURKES
AIR OPS BRANCH DIRECTOR		TIM FAUST		SAFETY		BRAD LIDELL; MIKE COOK TONY RIVERS (T)
5. Resources Assigned this Period						
Strike Team / Task Force / Resource Designator		LWD	Leader	Number Persons	Drop Off PT./Time	Pick Up PT./Time
MODULE O-311		05/18	RONALD ESQUIBEL	10	DP#2/1000	DP#2/2000
CREW - T1 - ASHEVILLE HOTSHOTS C-8		05/10	MIKE HONEYCUTT	18	DP#2/1000	DP#2/2000
TFLD O-197		05/12	ERIK M JOHNSON	1	DP#2/1000	DP#2/2000
ENG3 - WEST METRO - BRUSH 39 E-277		05/08	ANTHONY P LODICE	4	DP#2/1000	DP#2/2000
ENG3 - DEER MOUNTAIN FPD - ENGINE 12 E-280		05/15	JOSEPH CRAIG WATTS	3	DP#2/1000	DP#2/2000
ENG6 - KNF - FSD3 - 631 E-285		05/17	EDWIN FARRAND	5	DP#2/1000	DP#2/2000
ENG6 - TGF FORESTRY AND FIRE, INC. - C94783 - E E-287		05/09	JASON SARTIN	3	DP#2/1000	DP#2/2000
WTS2 - SUPPORT TIPTON & YOUNG CONSTRUCT E-347		05/16	JIM VICK	1	DP#2/1000	DP#2/2000
TFLD - O-256		05/14	ANDREW PASCARELLA, JASON GILLIS (T)	1	DP#2/1000	DP#2/2000
ENG6 MURRAY 86 E-61		05/12	KEVIN E CLINE	2	DP#2/1000	DP#2/2000
ENG6 LUMPKIN 86 E-40		05/12	PAYTON TURNER	2	DP#2/1000	DP#2/2000
ENG6 - 6171 E-77		05/08	DAVID L GIBSON	3	DP#2/1000	DP#2/2000
ENG6 FRANKLIN 86 E-59		05/12	RUSTY CARROLL	2	DP#2/1000	DP#2/2000
ENG6 CHATTOOGA 86 E-60		05/12	TONY KEENE	2	DP#2/1000	DP#2/2000
ENG6-E631 E-56		05/10	KENDALL SLOAN	3	DP#2/1000	DP#2/2000
ENG6 - WILLIAMS WILDLAND FIRE SERVICES, LLC - C E-143		05/17	MICHAEL MCNAUGHTON	3	DP#2/1000	DP#2/2000
STEQ O-200		05/09	JAMES DONNY REWIS	1	DP#2/1000	DP#2/2000
8. Division/Group Communication Summary						
Function	Channel	RX Frequency N/W	RX Tone/NAC	TX Frequency N/W	TX Tone/NAC	Mode
COMMAND	5	159.465	CSQ	151.1450	123.0	A
TRAVEL	6	159.390	CSQ	159.3900	156.7	A
TACTICAL	7	154.3025	CSQ	154.3025	156.7	A
AIR TO GROUND	14	166.675	CSQ	166.6750	CSQ	A
AIR TO GROUND	15	169.1500	CSQ	169.1500	CSQ	A
9. Prepared By (Resource Unit Leader)			Approved By (Planning Section Chief)		Date	Time
DONNA THOMAS			BRIAN ELDREDGE		05/07/2017	2000

Division/Group Assignment List (ICS 204 WF)

1. Incident Name:			3.			
WEST MIMS			III		A	
2. Operational Period: DAY SHIFT 0830-2030						
Date/Time From: 05/08/2017 0830 MON		Date/Time To: 05/08/2017 2030 MON				
4. Operations Personnel						
PLANNING OPERATIONS CHIEF		STEVE WEAVER JEREMY BRAND (T)		OPERATIONS CHIEF		VICTA EDGE, JIM DURRWACHTER L. SMITH (T), S. BOWMAN (T)
BRANCH DIRECTOR		RON SMITH		DIVISION/GROUP SUPERVISOR		JAMES ROURKES
AIR OPS BRANCH DIRECTOR		TIM FAUST		SAFETY		BRAD LIDELL; MIKE COOK TONY RIVERS (T)
5. Resources Assigned this Period						
Strike Team / Task Force / Resource Designator		LWD	Leader	Number Persons	Drop Off PT./Time	Pick Up PT./Time
TPL3 JEFF DAVIS 71 E-289		05/09	DAVID REWIS	1	DP#2/1000	DP#2/2000
TPL2 COFFEE 73 E-290		05/09	HANK JOINER	1	DP#2/1000	DP#2/2000
TPL2 PIERCE 70 E-291		05/09	JIM J DURRANCE	1	DP#2/1000	DP#2/2000
EMPF E-374 6 602-376-9812		05/16	PAUL PUGH	1	DP#2/1000	DP#2/2000
SOFR O-335		05/19	LARRY CONNELL	1		
6. Control Operations/Work Assignments:						
<p>Purpose: Keep fire North of FL 2 Task: Patrol and mop up within 50 ft of fire perimeter. Respond to any new starts within Div. Determine and report contained line to Planning OSC1. End State: Confine fire perimeter to reduce threats and minimize damage to private timberlands and resources values at risk</p>						
7. Special Instructions:						
<p>Ensure LCES are in place before operations begin & stay hydrated. Drive defensively and with lights on at all times. Identify escape routes. Bridge near DP 9 restricted to pickups - No engines. Bridge on swamp perimeter road just east of first Branch has steep drop offs - 1 lane travel - watch for barricades. Medical Emergency Channel: Command ETA for Ambulance to Scene: Air: 10 mins Ground: 15 mins Approved Helispot: Drop Point 1 Lat: N 30 30.929 Long: W 82 14.174 Primary - Ambulance is ground contact with air ambulance Secondary - IWI- IC or approved person will use channel 16 (Air Guard) for ground contact with air ambulance</p>						
8. Division/Group Communication Summary						
Function	Channel	RX Frequency N/W	RX Tone/NAC	TX Frequency N/W	TX Tone/NAC	Mode
COMMAND	5	159.465	CSQ	151.1450	123.0	A
TRAVEL	6	159.390	CSQ	159.3900	156.7	A
TACTICAL	7	154.3025	CSQ	154.3025	156.7	A
AIR TO GROUND	14	166.675	CSQ	166.6750	CSQ	A
AIR TO GROUND	15	169.1500	CSQ	169.1500	CSQ	A
9. Prepared By (Resource Unit Leader)			Approved By (Planning Section Chief)		Date	Time
DONNA THOMAS			BRIAN ELDREDGE		05/07/2017	2000

Division/Group Assignment List (ICS 204 WF)

1. Incident Name:			3.			
WEST MIMS			III		INITIAL ATTACK	
2. Operational Period: DAY SHIFT 0830-2030						
Date/Time From: 05/08/2017 0830 MON		Date/Time To: 05/08/2017 2030 MON				
4. Operations Personnel						
PLANNING OPERATIONS CHIEF		STEVE WEAVER JEREMY BRAND (T)		OPERATIONS CHIEF		VICTA EDGE; JIM DURRWACHTER L. SMITH(T), S. BOWMAN (T)
BRANCH DIRECTOR		RON SMITH		DIVISION/GROUP SUPERVISOR		DONNIE HARRIS
SAFETY		BRAD LIDELL, MICHAEL COOK TONY RIVERS (T)		AIR OPS BRANCH DIRECTOR		TIM FAUST
5. Resources Assigned this Period						
Strike Team / Task Force / Resource Designator		LWD	Leader	Number Persons	Drop Off PT./Time	Pick Up PT./Time
ICT4			CORY BRYANT	1	/0800	/2000
TFLD O-205		05/09	ADAM MCCULLOUGH	1	/0800	/2000
HEQB O-187 (DAY OFF 5/7)		05/20	PRIVETT	1	/0800	/2000
DOZ2 OKE-54 E-34 IA		05/20	BROWN	1	/0800	/2000
OKE 56 - TPL E-35 IA		05/20	JEFF SWAIN	1	/0800	/2000
ENGINE - T6 - OK-4261 E-36 IA		05/07	DIMAGGIO	2	/0800	/2000
SC-CSR - TPL 223 E-240 CONT		04/25	UNSTAFFED	1	/0800	/2000
NC PXI - TPL E-131 CONT		05/14	UNSTAFFED	1	/0800	/2000
ENGINE - T6 - SC-CRR-E262 E-237 IA		05/07	CLIFF BERGER	2	/0800	/2000
DOZ2 - GA-SAR-922 IA			WAYNE SMITH	1	/0800	/2000
SOFR O-281.59		05/16	CHARLES E PATTERSON	1		
6. Control Operations/Work Assignments:						
<p>Purpose: Ensure communication with OKR/GA and FL State Ensure timely response on any IA within OKR jurisdictional boundaries and vicinity Assist as approved by Agency Administrators and Unified Incident Commanders.</p> <p>Task: Coordinate with OKR duty officer for notification of reported new ignitions Coordinate initial attack action with assigned aviation and/or ground assets. Determine IA resource repositioning across OKR</p> <p>End State: Protect human life Minimize damage to public and private property Minimize environmental damage to protect habitat species.</p>						
8. Division/Group Communication Summary						
Function	Channel	RX Frequency N/W	RX Tone/NAC	TX Frequency N/W	TX Tone/NAC	Mode
COMMAND	3	159.120		151.370	82.5	A
TACTICAL	8	163.7125	CSQ	163.7125	CSQ	A
AIR TO GROUND	14	166.675	CSQ	166.6750	CSQ	A
AIR TO GROUND	15	169.1500	CSQ	169.1500	CSQ	A
9. Prepared By (Resource Unit Leader)			Approved By (Planning Section Chief)		Date	Time
DONNA THOMAS			BRIAN ELDREDGE		05/07/2017	2000

Division/Group Assignment List (ICS 204 WF)

1. Incident Name:			3.			
WEST MIMS			III	INITIAL ATTACK		
2. Operational Period: DAY SHIFT 0830-2030						
Date/Time From:	MON	Date/Time To:	MON			
05/08/2017 0830		05/08/2017 2030				
4. Operations Personnel						
PLANNING OPERATIONS CHIEF	STEVE WEAVER JEREMY BRAND (T)		OPERATIONS CHIEF	VICTA EDGE; JIM DURRWACHTER L. SMITH(T), S. BOWMAN (T)		
BRANCH DIRECTOR	RON SMITH		DIVISION/GROUP SUPERVISOR	DONNIE HARRIS		
SAFETY	BRAD LIDELL, MICHAEL COOK TONY RIVERS (T)		AIR OPS BRANCH DIRECTOR	TIM FAUST		
6. Control Operations/Work Assignments:						
7. Special Instructions:						
<p>Contact Reggie Forcine for any cultural or archeological needs, as well as, RCW concerns. Ensure LCES are in place before operations begin & stay hydrated. Drive defensively and with lights on at all times. Communications: Use the tactical channel for the division you are in. Staging on east side at Refuge office.</p> <p>Contact Trent Ingram, GFC Unified IC 229-726-0285 when activating GFC contingency resources that are unassigned.</p>						
8. Division/Group Communication Summary						
Function	Channel	RX Frequency N/W	RX Tone/NAC	TX Frequency N/W	TX Tone/NAC	Mode
COMMAND	3	159.120		151.370	82.5	A
TACTICAL	8	163.7125	CSQ	163.7125	CSQ	A
AIR TO GROUND	14	166.675	CSQ	166.6750	CSQ	A
AIR TO GROUND	15	169.1500	CSQ	169.1500	CSQ	A
9. Prepared By (Resource Unit Leader)			Approved By (Planning Section Chief)		Date	Time
DONNA THOMAS			BRIAN ELDREDGE		05/07/2017	2000

Division/Group Assignment List (ICS 204 WF)

1. Incident Name:			3.			
WEST MIMS			III		M/N	
2. Operational Period: DAY SHIFT 0830-2030						
Date/Time From: 05/08/2017 0830 MON		Date/Time To: 05/08/2017 2030 MON				
4. Operations Personnel						
PLANNING OPERATIONS CHIEF		STEVE WEAVER JEREMY BRAND (T)		OPERATIONS CHIEF		VICTA EDGE, JIM DURRWACHTER L. SMITH (T), S. BOWMAN (T)
BRANCH DIRECTOR		RON SMITH		DIVISION/GROUP SUPERVISOR		JOHN JOHANSON, LWD - 5/9
SAFETY		BRAD LIDELL, MICHAEL COOK TONY RIVERS (T)		AIR OPS BRANCH DIRECTOR		TIM FAUST
5. Resources Assigned this Period						
Strike Team / Task Force / Resource Designator		LWD	Leader	Number Persons	Drop Off PT./Time	Pick Up PT./Time
ENG6 - ATTACK ONE FIRE MGMT SERV E-257		05/14	JOHN HOELLERICH	2	/1000	/2000
ENG6 - SCHOLL FIRE & FUELS MGMT. E-263		05/19	BEN HAYS	3	/1000	/2000
ENG6 - AR-OZF - SYL - E-671 E-283		05/10	DONALD P WAYMAN	3	/1000	/2000
STEQ O-201		05/08	DERRICK W DUNCAN	1	/1000	/2000
TPL2 WAYNE 63 E-292		05/08	JONATHAN KYLE HERRIN	1	/1000	/2000
TPL2 CHARLTON 70 E-293		05/08	KENNETH HARRIS	1	/1000	/2000
TPL2 ECHOLS 70 E-294		05/08	WILLIAM KYLER REGISTER	1	/1000	/2000
EMPF O-174 616-403-1873		05/12	LINDA KRAMER	1	/1000	/2000
SOF2 O-195 520-591-2434		05/10	JOHN MCGEE	1	/1000	/2000
6. Control Operations/Work Assignments:						
<p>Purpose: Keep fire West of Swamp edge break and South of Suwannee Canal in DIV M and South of Crawford Rd in DIV N</p> <p>Task: Patrol and mop up within 50 ft of fire perimeter. Respond to any new starts within Div. Prep for strategic firing of control lines. Determine and report contained line to Planning OSC1.</p> <p>End State: Confine fire perimeter to reduce threats and minimize damage to private timberlands and resources values at risk</p>						
7. Special Instructions:						
<p>Ensure LCES are in place before operations begin and stay hydrated. Drive defensively and with lights on at all times. Identify escape routes.</p> <p>Medical Emergency Channel: Command ETA for Ambulance to Scene: Air: 7 mins</p>						
8. Division/Group Communication Summary						
Function	Channel	RX Frequency N/W	RX Tone/NAC	TX Frequency N/W	TX Tone/NAC	Mode
COMMAND	3	159.120		151.370	82.5	A
TACTICAL	10	168.350	CSQ	168.350	CSQ	A
AIR TO GROUND	14	166.675	CSQ	166.6750	CSQ	A
AIR TO GROUND	15	169.1500	CSQ	169.1500	CSQ	A
9. Prepared By (Resource Unit Leader)			Approved By (Planning Section Chief)		Date	Time
DONNA THOMAS			BRIAN ELDREDGE		05/07/2017	2000

Division/Group Assignment List (ICS 204 WF)

1. Incident Name:			3.			
WEST MIMS			III	Division/Group: M/N		
2. Operational Period: DAY SHIFT 0830-2030						
Date/Time From:	MON	Date/Time To:	MON			
05/08/2017 0830		05/08/2017 2030				
4. Operations Personnel						
PLANNING OPERATIONS CHIEF	STEVE WEAVER JEREMY BRAND (T)		OPERATIONS CHIEF	VICTA EDGE, JIM DURRWACHTER L. SMITH (T), S. BOWMAN (T)		
BRANCH DIRECTOR	RON SMITH		DIVISION/GROUP SUPERVISOR	JOHN JOHANSON, LWD - 5/9		
SAFETY	BRAD LIDELL, MICHAEL COOK TONY RIVERS (T)		AIR OPS BRANCH DIRECTOR	TIM FAUST		
7. Special Instructions:						
<p>Ground: 15 mins Approved Helispot: POGO Helibase Lat: N 30 44.26 Long: W 82 07.69 Primary - Ambulance is ground contact with air ambulance Secondary - IWI- IC or approved person will use channel 16 (Air Guard) for ground contact with air ambulance</p>						
8. Division/Group Communication Summary						
Function	Channel	RX Frequency N/W	RX Tone/NAC	TX Frequency N/W	TX Tone/NAC	Mode
COMMAND	3	159.120		151.370	82.5	A
TACTICAL	10	168.350	CSQ	168.350	CSQ	A
AIR TO GROUND	14	166.675	CSQ	166.6750	CSQ	A
AIR TO GROUND	15	169.1500	CSQ	169.1500	CSQ	A
9. Prepared By (Resource Unit Leader)			Approved By (Planning Section Chief)		Date	Time
DONNA THOMAS			BRIAN ELDREDGE		05/07/2017	2000

Division/Group Assignment List (ICS 204 WF)

1. Incident Name:			3.			
WEST MIMS			Branch:		Division/Group:	
2. Operational Period: DAY SHIFT 0830-2030			III		O	
Date/Time From: 05/08/2017 0830 MON		Date/Time To: 05/08/2017 2030 MON				
4. Operations Personnel						
PLANNING OPERATIONS CHIEF		STEVE WEAVER JEREMY BRAND (T)		OPERATIONS CHIEF		VICTA EDGE, JIM DURRWACHTER L. SMITH (T), S. BOWMAN (T)
BRANCH DIRECTOR		RON SMITH		DIVISION/GROUP SUPERVISOR		ROBERT G THORP BRANDON HUGHES (T)
SAFETY		BRAD LIDELL, MICHAEL COOK TONY RIVERS (T)		AIR OPS BRANCH DIRECTOR		TIM FAUST
5. Resources Assigned this Period						
Strike Team / Task Force / Resource Designator		LWD	Leader	Number Persons	Drop Off PT./Time	Pick Up PT./Time
CREW - T1 - PIKE IHC C-9		05/21	JOHN ALLBRIGHT		42/1000	42/2000
MODULE - CHEROKEE IHC C-6		05/09	R. HOPKINS	10	42/1000	42/2000
TFLD O-260		05/18	CODY HOLLOWAY	1	42/1000	42/2000
ENG6 - UNIT #9060 - AMARILLO E-119		05/18	RANDALL FUCHS	3	42/1000	42/2000
TPL5 - UNIT #9892 - WOLFFORTH TF8 E-123		05/18	NATHAN SMITH	2	42/1000	42/2000
TPL5 - UNIT #9693 - SMITHVILLE E-124		05/18	MIKE ADAMS	2	42/1000	42/2000
HEQB O-275		05/14	CHARLES DANIELS	1	42/1000	42/2000
ROT RANCH EXCAVATOR W/ MASTICATOR E-74		05/14	PARISH	5	42/1000	42/2000
ROT RANCH TRACTOR/CUTTER E-73		05/14	DARYL	1	42/1000	42/2000
TFLD O-274 325-276-1713		05/18	SHANE CRIMM	1	42/1000	42/2000
ENG6 - UNIT #9360 - MCGREGOR TF3 E-120		05/17	JASON MYERS	3	42/1000	42/2000
STEN O-327		05/19	LARRY BLYTHE	1	42/1000	42/2000
TPL4 - UNIT #8394 - JASPER E-125		05/17	JOSH MIZRANY	2	42/1000	42/2000
TPL5 - UNIT #8591 - WOODVILLE E-126		05/17	CHARLES CORLEY	2	42/1000	42/2000
TPL3 - GFC1067 E-370		05/21	KEVIN ANDERSON	1	42/1000	42/2000
TPL2 - GFC3307 E-371		05/21	BENJI ANDERSON	1	42/1000	42/2000
TPL2 - GFC3295 E-372		05/21	SAMUEL LITTLE	1	42/1000	42/2000
STEQ - O-300		05/22	JAMES MASHBURN	1	42/1000	42/2000
8. Division/Group Communication Summary						
Function	Channel	RX Frequency N/W	RX Tone/NAC	TX Frequency N/W	TX Tone/NAC	Mode
COMMAND	5	159.465	CSQ	151.1450	123.0	A
TACTICAL	8	163.7125	CSQ	163.7125	CSQ	A
AIR TO GROUND	14	166.675	CSQ	166.6750	CSQ	A
AIR TO GROUND	15	169.1500	CSQ	169.1500	CSQ	A
9. Prepared By (Resource Unit Leader)			Approved By (Planning Section Chief)		Date	Time
DONNA THOMAS			BRIAN ELDREDGE		05/07/2017	2000

Division/Group Assignment List (ICS 204 WF)

1. Incident Name:			3.			
WEST MIMS			Branch:		Division/Group:	
2. Operational Period: DAY SHIFT 0830-2030			III		O	
Date/Time From: 05/08/2017 0830 MON		Date/Time To: 05/08/2017 2030 MON				
4. Operations Personnel						
PLANNING OPERATIONS CHIEF		STEVE WEAVER JEREMY BRAND (T)		OPERATIONS CHIEF		VICTA EDGE, JIM DURRWACHTER L. SMITH (T), S. BOWMAN (T)
BRANCH DIRECTOR		RON SMITH		DIVISION/GROUP SUPERVISOR		ROBERT G THORP BRANDON HUGHES (T)
SAFETY		BRAD LIDELL, MICHAEL COOK TONY RIVERS (T)		AIR OPS BRANCH DIRECTOR		TIM FAUST
5. Resources Assigned this Period						
Strike Team / Task Force / Resource Designator		LWD	Leader	Number Persons	Drop Off PT./Time	Pick Up PT./Time
STEQ O-357		05/21	JASON ODOM	1	42/1000	42/2000
TPL3 - GFC3288 - E-367		05/16	ROB MORE	1	42/1000	42/2000
TPL3 - GFC3234 - E-368		05/15	BRANDON DAVIS	1	42/1000	42/2000
TPL3 - GFC3219 - E-369		05/15	RUSSELL FOWLER	1	42/1000	42/2000
STEQ O-251		05/13	R.T. LUMPKIN	1	42/1000	42/2000
ENG6 - 151 TEXAS FIRE RESOURCES E-260		05/20	LARRY WEAVER	3	42/1000	42/2000
ENG6 - FWS - 462 E-261		05/07	CHRISTOPHER NOTHSTINE	3	42/1000	42/2000
ENG6 - KY-CGP - WFM2 E-258		05/10	CHARLES EDDIE CAPPS	3	42/1000	42/2000
STEQ O-258		05/16	TODD MILAM	1	42/1000	42/2000
TPL4 - GFC3204 E-404		05/16	DAVID COTTLES	1	42/1000	42/2000
TPL4 - GFC3226 E-405		05/16	BRANDON CHAFIN	1	42/1000	42/2000
TPL4 - GFC1467 E-406		05/16	CHARLES WATSON	1	42/1000	42/2000
EMPF E-314 602-980-6108		05/17	STAN BANGS	1	42/1000	42/2000
SOF2 O-166 406-599-7259		05/08	PHIL PERKINS	1	42/1000	42/2000
SOF2 O-386		05/21	IVAN S CUPP	1	42/1000	42/2000
6. Control Operations/Work Assignments:						
<p>Task: Anchor suppression work at fire perimeter in O. Prep lines and coordinate strategic firing with Unified IC's, as appropriate. Coordinate with Structure Protection group supervisor on triage of structures for point protection. Continue dozer line construction as appropriate to establish or strengthen containment.</p> <p>Purpose: To keep fire confined and contained</p>						
8. Division/Group Communication Summary						
Function	Channel	RX Frequency N/W	RX Tone/NAC	TX Frequency N/W	TX Tone/NAC	Mode
COMMAND	5	159.465	CSQ	151.1450	123.0	A
TACTICAL	8	163.7125	CSQ	163.7125	CSQ	A
AIR TO GROUND	14	166.675	CSQ	166.6750	CSQ	A
AIR TO GROUND	15	169.1500	CSQ	169.1500	CSQ	A
9. Prepared By (Resource Unit Leader)			Approved By (Planning Section Chief)		Date	Time
DONNA THOMAS			BRIAN ELDREDGE		05/07/2017	2000

Division/Group Assignment List (ICS 204 WF)

1. Incident Name:			3.			
WEST MIMS			III	O		
2. Operational Period: DAY SHIFT 0830-2030						
Date/Time From: 05/08/2017 0830	MON	Date/Time To: 05/08/2017 2030	MON			
4. Operations Personnel						
PLANNING OPERATIONS CHIEF	STEVE WEAVER JEREMY BRAND (T)		OPERATIONS CHIEF	VICTA EDGE, JIM DURRWACHTER L. SMITH (T), S. BOWMAN (T)		
BRANCH DIRECTOR	RON SMITH		DIVISION/GROUP SUPERVISOR	ROBERT G THORP BRANDON HUGHES (T)		
SAFETY	BRAD LIDELL, MICHAEL COOK TONY RIVERS (T)		AIR OPS BRANCH DIRECTOR	TIM FAUST		
6. Control Operations/Work Assignments:						
<p>West of St Mary's River in DIV O To protect outlying structures</p> <p>End State: Contain fire perimeter within boundaries of DIV O. Protect City of St. George residents and private property. Minimize damage to both public and private infrastructure. Protect resource values at risk.</p>						
7. Special Instructions:						
<p>Ensure LCES are in place before operations begin and stay hydrated. Drive defensively and with lights on at all times. Identify escape routes. Medical Emergency Channel: Command ETA for Ambulance to Scene: Air: 10 mins Ground: 15 mins Approved Helispot: POGO Helibase Lat: N 30 44.26 Long: W 82 07.69 Primary - Ambulance is ground contact with air ambulance Secondary - IW/ IC or approved person will use channel 16 (Air Guard) for ground contact with air ambulance</p>						
8. Division/Group Communication Summary						
Function	Channel	RX Frequency N/W	RX Tone/NAC	TX Frequency N/W	TX Tone/NAC	Mode
COMMAND	5	159.465	CSQ	151.1450	123.0	A
TACTICAL	8	163.7125	CSQ	163.7125	CSQ	A
AIR TO GROUND	14	166.675	CSQ	166.6750	CSQ	A
AIR TO GROUND	15	169.1500	CSQ	169.1500	CSQ	A
9. Prepared By (Resource Unit Leader)			Approved By (Planning Section Chief)		Date	Time
DONNA THOMAS			BRIAN ELDREDGE		05/07/2017	2000

Division/Group Assignment List (ICS 204 WF)

1. Incident Name:			3.			
WEST MIMS			III		Division/Group: STRUCTURE PROTECTION	
2. Operational Period: DAY SHIFT 0830-2030						
Date/Time From: 05/08/2017 0830 MON		Date/Time To: 05/08/2017 2030 MON				
4. Operations Personnel						
PLANNING OPERATIONS CHIEF		STEVE WEAVER JEREMY BRAND (T)		OPERATIONS CHIEF		VICTA EDGE, JIM DURRWACHTER L. SMITH (T) S.BOWMAN (T)
BRANCH DIRECTOR		RON SMITH		STRUCTURE PROTECTION		BILL KORNRUMPH CRAIG ROBERTSON
SAFETY		CHARLIE PATTERSON				
5. Resources Assigned this Period						
Strike Team / Task Force / Resource Designator		LWD	Leader	Number Persons	Drop Off PT./Time	Pick Up PT./Time
STEN O-327		05/19	LARRY BLYTHE	1		
ENG6 - OK-CNA #0861 E-411		05/19	RUBEN CHUCKLUCK	3		
ENG6 - OK-OSA #0661 E-412		05/19	ROSS WALKER	3		
ENG6 OK-WEA #1061 E-413		05/19	ALAN PRATT	3		
ENG6 NC-ECA #5261 E-414		05/19	CHARLES PARRISH	3		
ENG6 - NC-ECA #5262 E-415		05/19	MARIO ESQUIVEL	3		
ENG6 - E483		05/20	JUSTIN M ERICKSON	4		
ENG3 UNIT #9830 - LUBBOCK TFS E-121		05/18	JEFF WEBB	5		
ENG3 - UNIT #9530 - FT STOCKTON TFS E-122		05/17	JARED BURCHETT	5		
ENG3 E-422		05/21	BRENT KISSICK			
ENG3 E-423		05/20	DUSTIN LOPEZ			
TPL4 - MARION 70 E-82		05/11	CHRIS DUNN	1		
TPL4 CRAWFORD 71 E-84		05/11	BRANDON JONES	1		
TPL4 CRAWFORD 70 E-343		05/12	DOUG REDDING	1		
DOZ3 E-449		05/20				
SOF2 O-281.59		05/16	CHARLES E PATTERSON	1		
8. Division/Group Communication Summary						
Function	Channel	RX Frequency N/W	RX Tone/NAC	TX Frequency N/W	TX Tone/NAC	Mode
COMMAND	5	159.465	CSQ	151.1450	123.0	A
TACTICAL	13	159.4125	CSQ	159.4125	CSQ	A
AIR TO GROUND	14	166.675	CSQ	166.6750	CSQ	A
AIR TO GROUND	15	169.1500	CSQ	169.1500	CSQ	A
9. Prepared By (Resource Unit Leader)			Approved By (Planning Section Chief)		Date	Time
DONNA THOMAS			BRIAN ELDREDGE		05/07/2017	2000

Division/Group Assignment List (ICS 204 WF)

1. Incident Name:			3.				
WEST MIMS			III	Branch:		Division/Group:	
2. Operational Period: DAY SHIFT 0830-2030				III		STRUCTURE PROTECTION	
Date/Time From: 05/08/2017 0830	MON	Date/Time To: 05/08/2017 2030	MON				
4. Operations Personnel							
PLANNING OPERATIONS CHIEF		STEVE WEAVER JEREMY BRAND (T)		OPERATIONS CHIEF		VICTA EDGE, JIM DURRWACHTER L. SMITH (T) S.BOWMAN (T)	
BRANCH DIRECTOR		RON SMITH		STRUCTURE PROTECTION		BILL KORNRUMPH CRAIG ROBERTSON	
SAFETY		CHARLIE PATTERSON					
5. Resources Assigned this Period							
Strike Team / Task Force / Resource Designator		LWD	Leader	Number Persons	Drop Off PT./Time	Pick Up PT./Time	
6. Control Operations/Work Assignments:							
Purpose: Ensure timely response to protect human life property and access.							
Task: Protect city of St. George residents and private property. Affirm contact procedures with Charlton County and Sheriff Dept to assure effective communication in event of or post community evacuation needs. Implement structure protection efforts within DIV Z, O, N as needed. Coordinate with County EMS to determine special needs for road access.							
End State: Maintain communications with appropriate emergency management and Law Enforcement to protect public. Confine fire perimeter to reduce threats to structures, utilities and other values at risk							
7. Special Instructions:							
8. Division/Group Communication Summary							
Function	Channel	RX Frequency N/W	RX Tone/NAC	TX Frequency N/W	TX Tone/NAC	Mode	
COMMAND	5	159.465	CSQ	151.1450	123.0	A	
TACTICAL	13	159.4125	CSQ	159.4125	CSQ	A	
AIR TO GROUND	14	166.675	CSQ	166.6750	CSQ	A	
AIR TO GROUND	15	169.1500	CSQ	169.1500	CSQ	A	
9. Prepared By (Resource Unit Leader)			Approved By (Planning Section Chief)		Date	Time	
DONNA THOMAS			BRIAN ELDREDGE		05/07/2017	2000	

Division/Group Assignment List (ICS 204 WF)

1. Incident Name:			3.			
WEST MIMS			III		Z	
2. Operational Period: DAY SHIFT 0830-2030						
Date/Time From: 05/08/2017 0830 MON		Date/Time To: 05/08/2017 2030 MON				
4. Operations Personnel						
PLANNING OPERATIONS CHIEF		STEVE WEAVER JEREMY BRAND (T)		OPERATIONS CHIEF		VICTA EDGE; JIM DURRWACHTER L. SMITH (T) ; S. BOWMAN (T);
BRANCH DIRECTOR		RON SMITH		DIVISION/GROUP SUPERVISOR		TRENT INGRAM
AIR ATTACK SUPERVISOR		TIMOTHY FAUST		SAFETY		BRAD LIDELL, MICHAEL COOK TONY RIVERS (T)
5. Resources Assigned this Period						
Strike Team / Task Force / Resource Designator		LWD	Leader	Number Persons	Drop Off PT./Time	Pick Up PT./Time
STEN O-354		05/20	MARTIN CASSELLIUS	1	40/1000	40/2000
ENG6 - NC-NCS - PJ-9126 E-455		05/21	ASHLEY KING	2	40/1000	40/2000
ENG6 - NC-NCS - PJ-9244 E-485		05/21	JASON O'NEAL	2	40/1000	40/2000
HEQB O-356		05/20	LANDON CHASE BASS	1	40/1000	40/2000
STEQ O-343		05/20	AARON LEE GAY	1	40/1000	40/2000
TFLD O-350		05/20	NATHANIEL TODD NIGHTINGALE	1	40/1000	40/2000
TFLD O-351		05/20	MICHAEL SEAN STANAWAY	1	40/1000	40/2000
SOF2 O-166		05/08	PHILLIP PERKINS	1	40/1000	40/2000
SOF2 O-386		05/21	IVAN S CUPP	1	40/1000	40/2000
6. Control Operations/Work Assignments:						
Purpose: To keep fire confined and contained North of GA 94 in DIV Z.						
Task: Prep infrastructure along GA Hwy 94. Prep lines and coordinate strategic firing with Unified IC's as appropriate. Coordinate with structure protection group supervisor on triage of structures for point protection. Continue dozer line construction as appropriate to establish or strengthen containment. Utilize aviation assets to protect human life and property						
End State: Contain fire perimeter within boundaries of DIV Z. Minimize damage to both public and private infrastructure. Protect resource values at risk.						
7. Special Instructions:						
Medical Emergency Channel: Command ETA for Ambulance to Scene: Air: 7 mins Ground: 15 mins Approved Helispot: POGO Helibase						
8. Division/Group Communication Summary						
Function	Channel	RX Frequency N/W	RX Tone/NAC	TX Frequency N/W	TX Tone/NAC	Mode
COMMAND	5	159.465	CSQ	151.1450	123.0	A
TACTICAL	11	163.100	CSQ	163.1000	CSQ	A
AIR TO GROUND	14	166.675	CSQ	166.6750	CSQ	A
AIR TO GROUND	15	169.1500	CSQ	169.1500	CSQ	A
9. Prepared By (Resource Unit Leader)			Approved By (Planning Section Chief)		Date	Time
MISSY FORDER			BRIAN ELDREDGE		05/07/2017	2000

Division/Group Assignment List (ICS 204 WF)

1. Incident Name:			3.			
WEST MIMS			III	Z		
2. Operational Period: DAY SHIFT 0830-2030						
Date/Time From:	MON	Date/Time To:	MON			
05/08/2017 0830		05/08/2017 2030				
4. Operations Personnel						
PLANNING OPERATIONS CHIEF	STEVE WEAVER JEREMY BRAND (T)		OPERATIONS CHIEF	VICTA EDGE; JIM DURRWACHTER L. SMITH (T) ; S. BOWMAN (T);		
BRANCH DIRECTOR	RON SMITH		DIVISION/GROUP SUPERVISOR	TRENT INGRAM		
AIR ATTACK SUPERVISOR	TIMOTHY FAUST		SAFETY	BRAD LIDELL, MICHAEL COOK TONY RIVERS (T)		
7. Special Instructions:						
Lat: N 30 44.26 Long: W 82 07.69 Primary - Ambulance is ground contact with air ambulance Secondary - IWI- IC or approved person will use channel 16 (Air Guard) for ground contact with air ambulance						
8. Division/Group Communication Summary						
Function	Channel	RX Frequency N/W	RX Tone/NAC	TX Frequency N/W	TX Tone/NAC	Mode
COMMAND	5	159.465	CSQ	151.1450	123.0	A
TACTICAL	11	163.100	CSQ	163.1000	CSQ	A
AIR TO GROUND	14	166.675	CSQ	166.6750	CSQ	A
AIR TO GROUND	15	169.1500	CSQ	169.1500	CSQ	A
9. Prepared By (Resource Unit Leader)			Approved By (Planning Section Chief)		Date	Time
MISSY FORDER			BRIAN ELDREDGE		05/07/2017	2000

Division/Group Assignment List (ICS 204 WF)

1. Incident Name:			3.			
WEST MIMS			Branch:		Division/Group:	
2. Operational Period:			I		NIGHT SHIFT	
Date/Time From: 05/08/2017 2000 MON		Date/Time To: 05/09/2017 0800 TUE				
4. Operations Personnel						
OPERATIONS CHIEF		JAMES SCHWARTZ		BRANCH DIRECTOR		
SAFETY		KEVIN LABELLA		DIVISION/GROUP SUPERVISOR		PAUL MANCUSO; RUSSELL COPP
5. Resources Assigned this Period						
Strike Team / Task Force / Resource Designator		LWD	Leader	Number Persons	Drop Off PT./Time	Pick Up PT./Time
STEQ - O-257		05/12	MICHAEL BLOODWORTH	1	DP#3/2000	DP#3/0800
TPL4 BLECKLEY 71 E-70		05/12	WILLIAM SHELAR	1	DP#3/2000	DP#3/0800
TPL4 EVANS 72 E-71		05/12	ASHLEY SIKES	1	DP#3/2000	DP#3/0800
TPL4 CANDLER 71 E-72		05/12	JOSEPH HILLIARD	1	DP#3/2000	DP#3/0800
ENG6 - CRANE'S WILDLAND FIRE RESPONSE E-150		05/12	MICHAEL THOMAS	2	DP#3/2000	DP#3/0800
ENG6 - PATRICK ENVIRONMENTAL E95 E-147		05/14	NAIL RAFIKOV	3	DP#3/2000	DP#3/0800
ENG6 - PATRICK ENVIRONMENTAL E94 E-151		05/11	RIDGLEY	3	DP#3/2000	DP#3/0800
STEN O-186		05/09	PAT OJEDA	1	DP#3/2000	DP#3/0800
ENG6 - #9663 - SMITHVILLE TF6 E-259		05/13	GOLDEN W POWELL	3	DP#3/2000	DP#3/0800
ENG6 - NC-NCF E-691 E-255		05/20	CODY TROUT	3	DP#3/2000	DP#3/0800
ENG6 - NC-NCF E-621 E-256		05/20	JASON BOONE	3	DP#3/2000	DP#3/0800
EMPF E-342 928-249-0541		05/13	MICHAEL KOEPKE	1	DP#3/2000	DP#3/0800
EMPF E-352		05/16	KATHY NEMMERS	1	DP#3/2000	DP#3/0800
6. Control Operations/Work Assignments:						
<p>Purpose: Provide transitional support to day shift operations. Keep fire within fire control lines.</p> <p>Task: Patrol lines in Div B,C,D Monitor fire activity and take appropriate action</p> <p>End State: Confine fire consistant with protecting structures, private timberlands, and resource values at risk</p>						
7. Special Instructions:						
<p>Contact Night Incident Communications for any needs. Brief/Debrief with DIVS from A, B, C, D or OPS Chief. Identify escape routes. Loggers will be camping at the cutting area. Patrol logging operation area for potential reburn. Work with the logging foreman on any suppression action needs within the logging area.</p> <p>Medical Emergency Channel: Command</p>						
8. Division/Group Communication Summary						
Function	Channel	RX Frequency N/W	RX Tone/NAC	TX Frequency N/W	TX Tone/NAC	Mode
COMMAND	5	159.4650	CSQ	151.1450	123.0	A
TRAVEL	6	159.3900	CSQ	159.3900	156.7	A
9. Prepared By (Resource Unit Leader)			Approved By (Planning Section Chief)		Date	Time
DONNA THOMAS			BRIAN ELDREDGE		05/07/2017	2000

Division/Group Assignment List (ICS 204 WF)

1. Incident Name:				3.			
WEST MIMS				I	Division/Group:		
2. Operational Period: NIIGHT SHIFT 2000-0800					NIGHT SHIFT		
Date/Time From: 05/08/2017 2000 MON		Date/Time To: 05/09/2017 0800 TUE					
4. Operations Personnel							
OPERATIONS CHIEF		JAMES SCHWARTZ		BRANCH DIRECTOR			
SAFETY		KEVIN LABELLA		DIVISION/GROUP SUPERVISOR		PAUL MANCUSO; RUSSELL COPP	
7. Special Instructions:							
<p>ETA for Ambulance to Scene: Air: 10 mins Ground: 25 mins Approved Helispot: Drop Point 3 Lat: N 30 41.257 Long: W 82 28.833</p>							
8. Division/Group Communication Summary							
Function	Channel	RX Frequency N/W	RX Tone/NAC	TX Frequency N/W	TX Tone/NAC	Mode	
COMMAND	5	159.4650	CSQ	151.1450	123.0	A	
TRAVEL	6	159.3900	CSQ	159.3900	156.7	A	
9. Prepared By (Resource Unit Leader)			Approved By (Planning Section Chief)			Date	Time
DONNA THOMAS			BRIAN ELDREDGE			05/07/2017	2000

Division/Group Assignment List (ICS 204 WF)

1. Incident Name:				3.			
WEST MIMS				Branch:		Division/Group:	
2. Operational Period: NIIGHT SHIFT 2000-0800				III		NIGHT SHIFT	
Date/Time From: 05/08/2017 2000 MON		Date/Time To: 05/09/2017 0800 TUE					
4. Operations Personnel							
OPERATIONS CHIEF		BILL WOODYARD		BRANCH DIRECTOR		ROBERT TRINCADO	
SAFETY		STEVE SMESTED		DIVISION/GROUP SUPERVISOR		SHANE STURGILL; MICHAEL CACHERO	
5. Resources Assigned this Period							
Strike Team / Task Force / Resource Designator		LWD	Leader	Number Persons	Drop Off PT./Time	Pick Up PT./Time	
STEN O-179		05/08	DOUG T NIEMYNSKI	1	DP#18/2000	DP#18/0800	
ENG3 - WILDLANDS FIRE SERVICE INC - 892627 - 16 E-276		05/21	TYSON HUNT	3	DP#18/2000	DP#18/0800	
ENG3 - FAIRMOUNT - ENGINE 34 E-278		05/08	JOHNNIE T MACY	3	DP#18/2000	DP#18/0800	
ENG3 - ENGINE - 4-62 (USFS) E-279		05/08	LAWRENCE D BADGER	4	DP#18/2000	DP#18/0800	
ENG6 - CROSS TIMBERS FIRE MANAGEMENT - C03703 - E-284		05/10	SCOTT WHITE	3	DP#18/2000	DP#18/0800	
ENG6 - FIRE MANAGEMENT SERVICES 351086 E-286		05/09	MARSHALL SQUIER	3	DP#18/2000	DP#18/0800	
STEQ O-225		05/08	HAYDEN S. HOLT O-225	1	DP#18/2000	DP#18/0800	
TPL4 TIFT 70 GFC3212 E-297		05/08	TAYLOR D. BROWN	1	DP#18/2000	DP#18/0800	
TPL5 MILLER 71 GFC1018 E-298		05/08	GABRIEL A LOWRY	1	DP#18/2000	DP#18/0800	
TPL3 WORTH 71 - GFC4203318 E-296		05/08	SAMUEL J. REYNOLDS	1	DP#18/2000	DP#18/0800	
WT2 E-313		05/17	WOODY BARGERON		DP#18/2000	DP#18/0800	
WT2 E-340		05/17	DEVIN MCHZLEY		DP#18/2000	DP#18/0800	
EMPF O-315 520-580-9807		05/17	STEPHEN WOLFSTITCH	1	DP#18/2000	DP#18/0800	
TPL2 - FORESTRY COMPANY, THE INC - N03202 E-461		05/21	SAVELL SCHMIDT	1	DP#18/2000	DP#18/0800	
TFLD O-384		05/21	RICHARD SACK	1	DP#18/2000	DP#18/0800	
6. Control Operations/Work Assignments:							
<p>Purpose: Provide transitional support to day shift operations. Keep fire within fire control lines.</p> <p>Task: Patrol lines in Div A, O, N, M Monitor fire activity and take appropriate action</p> <p>End State: Confine fire consistant with protecting structures, private timberlands, and resource values at risk</p>							
7. Special Instructions:							
8. Division/Group Communication Summary							
Function	Channel	RX Frequency N/W	RX Tone/NAC	TX Frequency N/W	TX Tone/NAC	Mode	
COMMAND	3	159.120		151.370	82.5	A	
TACTICAL	8	163.7125	CSQ	163.7125	CSQ	A	
9. Prepared By (Resource Unit Leader)			Approved By (Planning Section Chief)			Date	Time
DONNA THOMAS			BRIAN ELDREDGE			05/07/2017	2000

Division/Group Assignment List (ICS 204 WF)

1. Incident Name:			3.			
WEST MIMS			III	Division/Group: NIGHT SHIFT		
2. Operational Period: NIIGHT SHIFT 2000-0800						
Date/Time From:	MON	Date/Time To:	TUE			
05/08/2017 2000		05/09/2017 0800				
4. Operations Personnel						
OPERATIONS CHIEF	BILL WOODYARD		BRANCH DIRECTOR	ROBERT TRINCADO		
SAFETY	STEVE SMESTED		DIVISION/GROUP SUPERVISOR	SHANE STURGILL; MICHAEL CACHERO		
7. Special Instructions:						
<p>Ensure LCES are in place before operations begin and stay hydrated. Drive defensively and with lights on at all times. Identify escape routes.</p> <p>Medical Emergency Channel: Command ETA for Ambulance to Scene: Air: 7 mins Ground: 15 mins Approved Helispot: POGO Helibase Lat: N 30 44.26 Long: W 82 07.69</p>						
8. Division/Group Communication Summary						
Function	Channel	RX Frequency N/W	RX Tone/NAC	TX Frequency N/W	TX Tone/NAC	Mode
COMMAND	3	159.120		151.370	82.5	A
TACTICAL	8	163.7125	CSQ	163.7125	CSQ	A
9. Prepared By (Resource Unit Leader)			Approved By (Planning Section Chief)		Date	Time
DONNA THOMAS			BRIAN ELDREDGE		05/07/2017	2000

AIR OPERATIONS SUMMARY (ICS220)

Prepared by: John Mason

Prepared Date: 5/7/2017

Prepared Time: 18:00

1. INCIDENT NAME: West Mims	2. OPS PERIOD DATE: 5/8/17	START TIME: 0900	END TIME: 2030	SUNRISE: 0638	SUNSET TIME: 2011 (Folkston)
3. REMARKS Safety Notes: Hazards (SEE AND AVOID GENERAL AVIATION TRAFFIC AND AERIAL HAZARDS) -Maintain clear communications; confirm that drop location is clear of ground personnel. -Incident Aircraft conduct flight following with Pogo Helibase when ATGS is not up. -Aerial Ignition Group: Helicopter 7HX with PLDO; FIRB, Joe Chastain. ORDERING/FLIGHT REQUESTS -Request Helicopter water drops through Air Attack -Request aerial ignition through Operations -Request Tankers/Retardant through Air Attack -Requests for Reconnaissance missions must go through Operations for pre-approval E-MAIL AIRCRAFT COSTS DAILY AT END OF SHIFT TO: john_mason@fws.gov			4. READY ALERT AIRCRAFT: <u>7HX</u> Call 911 to request LIFEFLIGHT aircraft.		5. TFR: 7/1342; Surface to 3500' MSL; See NOTAM for full description. Frequency 120.8500

6. PERSONNEL	NAME	PHONE #	7. FREQUENCIES	AM	FM	8. FIXED-WING- Type/ Make-Model/ N#/ Base
AOBD	Tim Faust	702-271-6055	A/A - Fixed Wing A/A - Rotor / TFR	120.3500 120.8500		AIR ATTACK – ATGS – Mark Nunez / AC690 / N690RA / LCQ 805-975-5227 ATGS(T) – Derek Wheeler 530-355-3274 ATGS – Chris Worrel / Kodiak / N420Q / LCQ 850-447-4597 ATGS(T) – Mike Bot 623-696-8532
ASGS	John Mason	478-951-7319	A/G 66 (Primary) A/G 72 (Secondary)		166.6750 169.1500	LEAD – ASM – B6, B7 As assigned
HEB2 - Pogo HEB1 - Lake City HEB1(T) - Lake City	Rick Jacobs Nate Alexander Angie Ruble	334-428-3042 406-491-0878 573-241-0604	Deck/TOLC (Pogo) Deck (Lake City)		168.0500 169.1750	TANKERS – As available (T-41) BAE146 / N471NA / LCQ (Off Fridays) (T-1) BAE146 / N473NA / LCQ (Off Sundays) (T-3) BAE146 / N475NA / LCQ (Off Tuesdays) (T-2) BAE146 / N474NA / LCQ (T-164) RJ-85A / N374AC / LCQ
	Pogo Helibase	912-496-4415				
	Lake City Helibase	561-512-6333	Air Guard		168.625 (110.9)	

9. HELICOPTER Remarks Box Legend: C=Cargo P=Passengers B=Bucket SN=Snorkel R=Rappel H=Hoist SH=Short Haul ME=Medical Evacuation/Extraction Exu=Exclusive Use

FAA N#	T Y	MAKE/ MODEL	BASE	START	READY to FLY	REMARKS	FAA N#	T Y	MAKE/ MODEL	BASE	START	READY to FLY	REMARKS
27HX	3	Bell 407	Pogo (3GE1)	0730	0900	P, B Exu	611CK (701)	1	SH-3H / S-61	Lake City (LCQ)	0700	0730	SN Exu
351FW	3	AS350 B-2	Pogo (3GE1)	0730	0900	P, B Exu	612CK (702)	1	SH-3H / S-61	Lake City (LCQ)	0700	0730	SN CWN
471CH	1	CH-47D	Lake City (LCQ)	0700	0730	SN Exu	13FH	1	UH-60A	Lake City (LCQ)	0700	0730	B Exu
161KA	1	K-1200	Lake City (LCQ)	0700	0730	B Exu	137BH	1	S70A-27	Lake City (LCQ)	0700	0730	B <i>*On Loan</i>
699RH	1	K-1200	Lake City (LCQ)	0700	0730	B Exu	472CH	1	CH-47D	Lake City (LCQ)	0700	0730	SN <i>*On Loan</i>

INCIDENT RADIO COMMUNICATIONS PLAN		Incident Name West Mims Fire NIFC Radio-Group 1				Date/Time Prepared 05/07/2017 1630		Operational Period Date/Time 05/08/17 0830 - 05/09/17 0830		
Ch #	Function	Channel Name/Trunked Radio System Talkgroup	Assignment	RX Freq N or W	RX Tone/NAC	TX Freq N or W	Tx Tone/NAC	Mode A, D or M	Remarks	
1	COMMAND	WEST OKEE REP		167.1250N	156.7	163.1500N	156.7	M	STEPHEN FOSTER STATE PARK	
2	COMMAND	S. FOSTER	DIV B, C & D	159.1200N	NONE	151.3700N	100.0	A	WEST	
3	COMMAND	CORNELIA	DIV M/N, IA & BRANCH III-NIGHT	159.1200N	NONE	151.3700N	82.5	A	EAST	
4	COMMAND	BRAGANZA		159.4650N	NONE	151.1450N	114.8	A	NORTH	
5	COMMAND	GFC EDDY	MIMS ICP, DIV A, O, Z BRANCH I-NIGHT, ROAD MAINT, STRUCTURE	159.4650N	NONE	151.1450N	123.0	A	WEST MIMS DISPATCH	
6	TRAVEL	GFC TAC 1	TRAVEL	159.3900N	NONE	159.3900N	156.7	A	GFC MOBILE TO MOBILE	
7	TACTICAL	V FIRE 26	DIV A & ROAD MAINT	154.3025N	NONE	154.3025N	156.7	A		
8	TACTICAL	OSCEOLA PROJECT	DIV O, IA & BRANCH III-NIGHT	163.7125N	NONE	163.7125N	NONE	A		
9	TACTICAL	COMPACT	DIV B	159.2850N	NONE	159.2850N	156.7	A		
10	TACTICAL	REFUGE TAC 1	DIV M/N	168.3500N	NONE	168.3500N	NONE	A		
11	TACTICAL	REFUGE TAC 2	DIV Z	163.1000N	NONE	163.1000N	NONE	A		
12	TACTICAL	FFS 199	DIV C	159.4425N	NONE	159.4425N	NONE	A		
13	TACTICAL	FFS 200	DIV D, STRUCTURE	159.4125N	NONE	159.4125N	NONE	A		
14	AIR TO GROUND	AIR TO GRD 66	PRIMARY AIR TO GROUND	166.6750N	NONE	166.6750N	NONE	A	AIR/GROUND TACTICAL	
15	AIR TO GROUND	AIR TO GRD 72	SECONDARY AIR TO GROUND	169.1500N	NONE	169.1500N	NONE	A	AIR/GROUND TACTICAL	
16	AIR GUARD	AIR GUARD	ALL DIVISIONS	168.6250N	NONE	168.6250N	110.9	A	EMERGENCY AIRCRAFT COMMS	
Prepared By (Communications Unit) /s/ Jerry W Patrick COML					Incident Location WEST MIMS County: Clinch State: Georgia Latitude 30 34 28N Longitude 082 19 24W					

The convention calls for frequency lists to show four digits after the decimal place, followed by either an "N" or a "W", depending on whether the frequency is narrow or wide band. Mode refers to either "A" or "D" indicating analog or digital (e.g. Project 25) or "M" indicating mixed mode. All channels are shown as if programmed in a control station, mobile or portable radio. Repeater and base stations must be programmed with the Rx and Tx reversed.


PHONE LIST - WEST MIMS FIRE

Position	Name	Phone Number	Position	Name	Phone Number
UNIFIED COMMAND			OPERATIONS		
Red Team IC	Mike Dueitt	850-228-0320	Lead Ops	Land Line	912-637-5112
Red Team IC(t)	Michael Goicochea	406-865-0975	Lead Ops (t)	Victa Edge	706-270-4568
GA Forest Commision IC	Trent Ingram	229-726-0285	Planning Ops	Larry Smith	337-526-0128
Florida Forest Service IC	Rick Dolan	352-353-5101	Planning Ops (t)	Steve Weaver	828-360-2476
Liason Officer	Keith Lawrence	803-522-5264	Field Ops	Jeremy Brand	256-589-5098
Liason Officer	J.D.Lee	239-340-4626	Field Ops (t)	Jim Durrwachter	229-561-3477
PUBLIC INFORMATION	Land Line	912-637-5108	Branch I Director	Shannon Bowman	850-490-0428
Information Desk		904-452-4627	Division B	Darrell Miller	520-604-7582
Public Information	Catherine Hibbard	413-531-4276	Division C	Tim Stiltner	904-210-6731
Public Information	Bonnie Strawser	252-423-0815	Division D	Bert Plant	732-904-5935
Refuge Public Info	Susie Heisey	912-286-3110	Branch I Night	Joe Burgette	303-548-0854
AGENCY REPRESENTATIVES			Division Night	Jamie Schwartz	540-903-7193
Refuge FMO	Reese Kerbow	912-276-0167	Division Night	Paul Mancuso	402-651-4068
Refuge Manager	Mike Lusk	912-390-2193	Division Night	Russell Copp	928-606-3820
DNR Agency Liaison	SGT. Patrick Dupree	404-694-5596	IA Group	Donnie Harris	252-475-8012
Ware Co EMA	Bill Parham	229-425-4549	Road Maint Group	Mike Johnson	270-348-0088
Clinch Co EMA	Will Joyce	912-520-8581	Branch III Director	Ron Smith	601-466-7153
Lanier Co EMA	Randy Patten	229-482-5070	Division A	James Rourkes	386-623-7137
Charlton Co EMA	Bruce Young	912-390-2022	Division M	John Johanson	928-595-4448
Charlton Co Sheriff's Office	Inv. Clay Burnsel	912-276-2628	Division N/O	Robert Thorp	719-207-0096
Georgia EMA	Diane Adams	912-266-5421	Structure Prot Specialist	Bill Kornrump	505-463-8412
PLANNING	Land Line		Structure Prot Specialist	Craig Robertson	505-353-7124
Chief	Brian Eldredge	208-869-6362	Branch III Night	Bill Woodyard	706-859-1497
Fire Behavior Analyst	Gary Jarvis	251-288-1084	Division Night	Shane Sturgill	423-202-6567
THSP-ARA	Trent Wickman	218-341-8646	Division Night	Michael Cachero(t)	520-538-5382
IMET	Angie Enyedi	904-318-4041	Refuge Advisor	Reggie Forcine	912-614-4041
FWS READ	Carl Schmidt	478-365-2088	Florida Contingency	Keith Osteen	
FWS READ	Daniel Barrant	352-490-1959	FWS Contingency	Rocky Chesser	912-276-3232
FWS READ	Howard McClough	912-276-0552	FWS Contingency	Reggie Forcine	912-614-4041
FWS READ	Erin Daughtrey	912-223-6752	FFS Contingency	John Raulerson	386-292-5652
FINANCE	Land Line	912-637-5109	FFS Contingency	Andy Lamborn	383-365-4441
Chief	Bonny Johnson	859-556-1572	AIR OPERATIONS		
Comp/Claims	Verma Coleman	470-532-8798	AOBD	Timothy Faust	702-271-6055
			ATGS	Chris Worrell	850-447-4597
			ATGS	Mark Nunez	805-975-5227
			ATGS(t)	Derek Wheeler	530-355-3274
			ATGS(t)	Mike Bot	623-696-8532
			ASGS	John Mason	478-951-7319
			HEB2-Pogo	Rick Jacobs	334-428-3042
			HEB1 - Lake City	Corey Lewis	605-517-9042
			HEB1 (t) - Lake City	Angie Ruble	573-241-0604
			SAFETY		
			Safety Officer	Mike Cook	205-272-2426
			Safety Officer	Brad Lidell	812-583-5543
			Safety Officer	Tony Rivers	318-771-1316
			Safety Officer	Tommy Hawkins	706-676-7538
			LOGISTICS		
LAND OWNERS			Communications Unit	24 Hour	912-637-5116
Steve Davis	912-614-1828		Supply Unit	Mark Morgan	404-825-6922
Allen C. Cross	904-796-7929		Ordering Manager	Nina Gainey	205-243-8816
			Ground Support Unit Leader	Pat Wright	803-295-2819
			Communications	Jerry Patrick	601-942-2786
			Communications	Barry Stearns (t)	954-553-6544
			Medical Unit Leader	Fred Adler	479-238-6064
			Food Unit Leader	Andy Boggs	208-661-9451
			Security Manager	Tom Neal	618-201-2111
Ver 07May17					



HEALTH AND SAFETY MESSAGE

“We don’t plan on luck to be safe, we plan on sound risk management and good decisions”....the Red Team

INCIDENT: West Mims Fire	DATE: Monday, May 8, 2017
Major Hazards & Risks: Extreme Fire Behavior, Aviation, Heavy Equipment, Driving	
<p>Fire Behavior: <i>This is the fourth day of extreme fire behavior. Fuels continue to dry. Today, the relative humidity will promote significant probability of ignition. Be diligent to identify spots and be aware of additional spotting as you initiate control actions or respond to new starts. LCES must be established before engagement. Set Management Action Points and be prepared to disengage and reassess early if necessary.</i></p> <p>Aviation: <i>Expect a lot of aviation use today. Division resources should be prepared to communicate needs clearly on the assigned air to ground frequencies. Aviation resources should follow protocols and be prepared for a long day of work. Pilots have authority for final approval of all missions and will request ground clearance before water drops. Speak up if you see something that could be an aviation hazard.</i></p> <p>Heavy Equipment: <i>We have heavy equipment from many organizations and with a variety of abilities. Operators and equipment bosses should match the abilities to the job and be clear on mission assignments. Know your travel routes, both capacity and clearances, especially on bridges. Stay clear of equipment work areas.</i></p> <p>Driving: <i>Road hazards will increase with Monday work and school traffic. We can’t accomplish our mission unless we reach the fire, so drive cautiously. Clear your dash for better visibility, clear your floor for better braking and clear your mind for better driving.</i></p>	
<p style="text-align: center;">Watchout</p>  <p>16.GETTING FREQUENT SPOT FIRES ACROSS LINE</p>	<p style="text-align: center;">Risk Management IRPG Pg 1</p> <p style="text-align: center;">Identify hazards Assess hazards Develop controls & make risk decisions Implement controls Supervise & evaluate</p>

Red Team Safety Officers: Brad, Mike, Tommy, Tony, Larry & Ivan

INCIDENT SAFETY ANALYSIS 215a

West Mims Fire - Monday, May 08, 2017

8. Location	9. Hazard	6. Control or Abatement Action (Engineering, Administrative, PPE, Avoidance, Education, etc)
ALL	Extreme Fire Behavior	<ul style="list-style-type: none"> ~ Share weather observations with all personnel assigned to division. ~ Establish LCES. ~ Establish "Trigger Points" to withdraw. ~ Use "Risk Management" process prior to engaging in suppression actions, refer to page 1, IRPG. ~ Review Fuel Advisory for FL and southeastern GA.
ALL	Helicopter Operations	<ul style="list-style-type: none"> ~ Helicopter operations should be used for priority missions. ~ Stay clear of all bucket drops when suppression actions are in place and allow 1 minute prior to re-entry. ~ Pilots or air supervisor ensure ground resources are clear before bucket drops. ~ Monitor A-G communications. ~ Follow aviation safety guidelines in IRPG and IHOG. ~ Ground resources advise pilot of local power lines and local visibility issues.
All	Train Traffic	<ul style="list-style-type: none"> ~ Observe warning signs when crossing tracks. ~ If no warning lights are posted, bring vehicle to a complete stop and check for incoming trains before crossing. ~ Use caution when crossing tracks with low vehicles or trailers. ~ Contact CSX to ensure awareness to fire resource locations.
A, B, C, D, O, Z, Contingency, IA	Power Utilities	<ul style="list-style-type: none"> ~ Notify all personnel of down electrical lines. ~ Refer to the IRPG page 24 for Power Line Safety. ~ Always treat downed wires as energized. ~ Identify and avoid high tension transmission lines. ~ In high winds or areas of dense smoke, avoid areas under power lines. ~ Be aware of utility restoration in your work area.
ALL	Air Operations	<ul style="list-style-type: none"> ~ Follow "Aviation Watch-Out Situations" on page 44, IRPG. ~ Don't plan on air resources for medical transport or resupply. ~ Ensure positive communication with all air resources. ~ Ensure communications are established with operators. ~ During airtanker operations clear the drop zone before approach of the lead plane.
All	Structure Protection & HAZMAT	<ul style="list-style-type: none"> ~ Review "Wildland Urban Interface" Watch outs, IRPG page 12. ~ Use "Structure Assessment" checklist, IRPG pages 13-15. ~ Follow "HAZMAT Incident Operations" on pages 34-36 in IRPG. ~ Identify and avoid damaged gas service near structures.
B, C	Logging Operations	<ul style="list-style-type: none"> ~ Stay clear of active cutting operations. ~ If re-burns occur, stop cutting operations before entering the area. ~ Use caution when logging equipment is in the area or traveling on the roads. ~ Maintain communication with logging operation during operational period.

INCIDENT SAFETY ANALYSIS 215a

ALL & ICPs	Driving & Traffic	<ul style="list-style-type: none"> ~ Practice "Defensive Driving" techniques traveling on all roads and city streets. ~ Use spotters when backing. ~ Honk horn to alert personnel when backing. ~ Keep clutter off dash and inside cab. ~ Follow Driving LCES (Lights, Chock blocks, Emergency brake, Seat belts. ~ Always use headlights. ~ Yield to pedestrians and bicycles. ~ Observe posted speed limits. ~ Use the 3 second rule for following distance when driving. ~ Use chock blocks, turn wheels into hill. ~ Avoid distractions (eating, cell phones, radio). ~ Ensure that windshields are kept clean of dust and bugs. ~ Use caution when traveling on roads that are impacted by smoke or dusty conditions. ~ When feasible, coordinate travel to and from the hotels to ensure two or more personnel travel together to mitigate long distances.
ALL	Hazard Trees	<ul style="list-style-type: none"> ~ Follow "Hazard Tree Safety" guidelines, IRPG page 22. ~ Post lookouts, or use a spotter in mop-up areas with personnel. ~ Don't park vehicles or take breaks in high concentrations of hazard trees. ~ Establish trigger points for disengagement during high wind events. ~ Remember that the hazard zone extends a minimum of 2 1/2 tree heights.
ALL	Fireline Hazards	<ul style="list-style-type: none"> ~ Establish and continue to validate LCES. ~ Avoid radiant heat by wearing appropriate PPE correctly. ~ Use correct tool for task assigned. ~ Follow power line safety protocol as outlined on page 22 in IRPG. ~ Flag and isolate all HAZMAT and alert all personnel working in Division. ~ Follow WUI recommendations on pages 10-11 in IRPG.
ALL	Injury & Medical Emergency	<ul style="list-style-type: none"> ~ Assist injured employee and provide appropriate medical care. ~ Use EMT's on Division for initial care. ~ Follow medical protocol as outlined in ICS-206 & IRPG Pgs 99-108
ALL	Firing Operations & Devices	<ul style="list-style-type: none"> ~ Only personnel trained in the use of each device will be authorized to use firing equipment. ~ Ensure all personnel are aware of firing operation that may affect them. ~ Wear appropriate PPE. ~ Ensure aerial/ground ignition plans have been adequately developed and personnel are briefed.
ALL	Communications	<ul style="list-style-type: none"> ~ Maintain communication with aviation resources, and suppression organization. ~ Ensure all know frequency and protocol for contacting resources. ~ Use clear terminology, ask questions and ensure good understanding, especially with new resources. ~ Utilize the ICS 205. ~ Utilize human repeaters when working in dead spots. ~ Know who you will contact in case of an emergency and practice the IWI protocol and 9 Line
ALL	Heavy Equipment Operations	<ul style="list-style-type: none"> ~ Ensure communications are established with operators. ~ Use hand signals if other communications are unavailable. ~ Maintain a 50'-100' exclusion area around equipment and increase it to 1 1/2 times tree height when in timber. ~ Use a spotter when backing.
ALL	Night Operations	<ul style="list-style-type: none"> ~ Maintain high visibility in work area and wear vest while in roadway. ~ Use glow sticks to mark hazards. ~ Ensure personnel have a personal light (headlamp) and red strobe to ensure visibility. ~ Watch for signs of fatigue. ~ Take breaks away from areas of known hazard.

INCIDENT SAFETY ANALYSIS 215a

ALL	Indirect Fire line	<ul style="list-style-type: none"> ~ Post lookouts, identify escape routes and safety zones (IRPG pg. 6). ~ Review "Strategy/Indirect Attack" (IRPG pg. 77).
A, O, N, M, Z	Urban Interface	<ul style="list-style-type: none"> ~ Review "Wildland Urban Interface" Watch Outs, IRPG, page 12. ~ Use "Structure Assessment Checklist", IRPG, pages 12-16. ~ Follow "Hazmat Incident Operations", IRPG, pages 34-36.
ALL	Wildlife	<ul style="list-style-type: none"> ~ Watch out for wildlife inside fire area and along roadways including bears, alligators, snakes, hogs, and deer. ~ Clean up all debris and trash during each operational period. ~ Don't feed or harass the animals.
ALL	Bees, Ticks, Mosquitoes, Spiders, Chiggers	<ul style="list-style-type: none"> ~ Canvas crew members for those with known allergic reactions to stings. ~ Ensure crew members have medication pens if needed. ~ Perform daily self inspection. ~ Use repellent as necessary. ~ Advanced Life Support, multi-dose epi and airway protection. ~ Keep affected area clean and bandaged. ~ Be extra careful when eating and/or drinking to avoid stings to mouth and throat.

MEDICAL PLAN (ICS 206 WF)

Incident/Project Name		1. Operational Period					
West Mims Fire		Date/Time 5/8/2017 0800hrs to 0800 hrs					
2. Ambulance Services							
Name	Complete Address	Phone	Advanced Life Support (ALS) Yes No				
Clinch County EMS	1050 Valdosta Highway Homerville GA	911	YES				
Charelston County EMS	321 Georgia Ave. St. George, GA	911	YES				
3. Air Ambulance Services							
Name	Phone	Type of Aircraft & Capability					
Air Methods	888-763-1010	AS 350 With night vision capabilities					
Air Evac	888-269-6006	206 L1+ With Night Vision capability					
Trauma 1	800-223-4878	Bell 407 & EC153 both with night vision capability					
4. Hospitals							
	DD° MM.MMM' N - Lat DD° MM.MMM' W - Long	Travel Time Air Gnd		Phone	Helipad Yes No		Level of Care Facility
	Lat: Long: VHF:	N 31° 13.452 W 82° 20.875	15 mins 45 mins		912-283-3030	<input checked="" type="checkbox"/> <input type="checkbox"/>	
Satilla Regional 410 Darling Ave. Waycross GA 31501	Lat: Long: VHF:	N 31° 01.975 W 82° 45.850	20 mins 30 mins	912-487-5211	<input checked="" type="checkbox"/> <input type="checkbox"/>	Level IV	
	Lat: Long: VHF:	N 30° 28.482 W 82° 11.896	15 mins 45 mins	904-259-3151	<input checked="" type="checkbox"/> <input type="checkbox"/>	Level IV	
	Lat: Long: VHF:	N 30° 20.890 W 81° 39.862	45 mins 90 mins	904-383-1015	<input checked="" type="checkbox"/> <input type="checkbox"/>	Level I Burn Center Level I Trauma Center	
5. Division Branch Group		Area Location Capability					
Division A		Paul Pugh EMPF (602)376-9812					
Division B		Martin Carillo EMPF (619)933-5546					
Division C,D		Gary Allen Ford EMPF (470)532-8807					
Division M		Linda Kramer EMPF (616)403-1873					
Division N,O		Stan Bangs EMPF (602)980-6108					
Roving		Dean Carpenter EMPF with UTV (479)-236-1174					
Night Shift Branch 1		Kathy Nemmers EMPF (602)885-3115					
Night Shift Branch 1		Michael Koepke EMPF (928)249-0541					
Night Shift Branch III		Stephen Wolfstich EMPF (520)508-9807					
Branch 1 Amb./24 hr.		Clinch Co. EMS (470)-532-8806					
Branch 3 Amb./24hr.		Golden Isles (912)602-9224					

IWI IC Responsibilities:

- Take charge of the scene – inform the Division Supervisor and Communications that you are the IWI IC and establish radio communications (frequencies, channels). Identify the emergency name – Division A medical, Fish Meadows medical, Highway 21 accident.
- Assign or begin patient assessment (9 Line) and first aid. Request additional medical resources on division/branch or across incident. Transmit 9 Line patient information to Communications.
- Determine patient transportation through consultation with line medical personnel and Medical Unit Leader. Consider transportation time, risk to personnel, destination facility and available operational resources. If air transport is chosen, implement the plan for alternative transportation in the event aircraft cannot complete the mission. Order transportation resources through Communications as early as possible.
- Notify Communications as resources arrive and any patient status changes. Names of injured or deceased individuals will not be transmitted on the radio.
- Initiate documentation for future investigation; if a line safety officer is available, assign them to lead documentation. Do not move deceased individuals, gear or personal effects except to accomplish rescue work or protect the safety of others. Obtain written documentation of witnesses. The Unit Log, ICS 214, may be used for the initial documentation, but a subsequent narrative will be required.
- As appropriate, conduct an After Action Review to determine successes, areas to improve and lessons learned.

6. Prepared By (Medical Unit Leader)	7. Date/Time	8. Reviewed By (Safety Officer)	9. Date/Time
Fred Adler MEDL / Ben Palm MEDL	5/6/2017	Tony Rivers (t)	5/7/2017

MEDICAL PLAN (ICS 206 WF)

Medical Incident Report

FOR ALL MEDICAL EMERGENCIES: IDENTIFY ON SCENE INCIDENT COMMANDER BY NAME AND POSITION AND ANNOUNCE "MEDICAL EMERGENCY" TO INITIATE RESPONSE FROM IMT COMMUNICATIONS/DISPATCH.

Use items one through nine to communicate situation to communications/dispatch.

1. CONTACT COMMUNICATIONS/DISPATCH

Ex: "Communications, Div. Alpha. Stand-by for Priority Medical Incident Report." (If life threatening request designated frequency be cleared for emergency traffic.)

2. INCIDENT STATUS: Provide incident summary and command structure.

Nature of Injury/Illness		Describe the injury (Ex: Broken leg with bleeding)
Incident Name		Geographic Name + "Medical" (Ex: Trout Meadow Medical)
Incident Commander		Name of IC
Patient Care		Name of Care Provider (Ex: EMT Smith)

3. INITIAL PATIENT ASSESSMENT: Complete this section for each patient. This is only a brief, initial assessment. Provide additional patient info after completing this 9 Line Report.

Number of Patients:	Male / Female	Age:	Weight:
Conscious? <input type="checkbox"/> YES <input type="checkbox"/> NO = MEDEVAC!		Breathing? <input type="checkbox"/> YES <input type="checkbox"/> NO = MEDEVAC!	
Mechanism of Injury: <i>What caused the injury?</i>			
Lat/Long (Datum WGS84) <i>Ex: N 40° 42.45' x W 123° 03.24'</i>			

4. SEVERITY OF EMERGENCY, TRANSPORT PRIORITY

SEVERITY	TRANSPORT PRIORITY
<input type="checkbox"/> URGENT-RED Life threatening injury or illness. <i>Ex: Unconscious, difficulty breathing, bleeding severely, 2° – 3° burns more than 4 palm sizes, heat stroke, disoriented.</i>	Ambulance or MEDEVAC helicopter. Evacuation need is IMMEDIATE.
<input type="checkbox"/> PRIORITY-YELLOW Serious Injury or illness. <i>Ex: Significant trauma, not able to walk, 2° – 3° burns not more than 1-2 palm sizes.</i>	Ambulance or consider air transport if at remote location. Evacuation may be DELAYED.
<input type="checkbox"/> ROUTINE-GREEN Not a life threatening injury or illness. <i>Ex: Sprains, strains, minor heat-related illness.</i>	Non-Emergency. Evacuation considered Routine of Convenience.

5. TRANSPORT PLAN:

Air Transport: (Agency Aircraft Preferred)			
<input type="checkbox"/> Helispot	<input type="checkbox"/> Short-haul/Hoist	<input type="checkbox"/> Life Flight	<input type="checkbox"/> Other
Ground Transport:			
<input type="checkbox"/> Self-Extract	<input type="checkbox"/> Carry-Out	<input type="checkbox"/> Ambulance	<input type="checkbox"/> Other

6. ADDITIONAL RESOURCE/EQUIPMENT NEEDS:

<input type="checkbox"/> Paramedic/EMT(s)	<input type="checkbox"/> Crew(s)	<input type="checkbox"/> SKED/Backboard/C-Collar
<input type="checkbox"/> Burn Sheet(s)	<input type="checkbox"/> Oxygen	<input type="checkbox"/> Trauma Bag
<input type="checkbox"/> Medication(s)	<input type="checkbox"/> IV/Fluid(s)	<input type="checkbox"/> Cardiac Monitor/AED
<input type="checkbox"/> Other (i.e. splints, rope rescue, wheeled litter)		

7. COMMUNICATIONS:

Function	Channel Name/Number	Receive (Rx)	Tone/NAC *	Transmit (Tx)	Tone/NAC *
<i>Ex: Command</i>	<i>Forest Rpt, Ch. 2</i>	<i>168.3250</i>	<i>110.9</i>	<i>171.4325</i>	<i>110.9</i>
COMMAND					
AIR-TO-GRND					
TACTICAL					

*(NAC for digital radio system)

8. EVACUATION LOCATION:

Lat/Long (Datum WGS84) <i>EX: N 40 42.45' x W 123 03.24'</i>	
Patient's ETA to Evacuation Location:	
Helispot/Extraction Size and Hazards:	

9. CONTINGENCY:

Considerations: <i>If primary options fail, what actions can be implemented in conjunction with primary evacuation method? Be thinking ahead...</i>	REMEMBER: Confirm ETA's of resources ordered Act according to your level of training Be Alert. Keep Calm. Think Clearly. Act Decisively.
--	--

MEDICAL PLAN (ICS 206 WF)

DEMOB LIST

05/08/2017

EQUIPMENT

E-260		(ENG6)	ENG6-151 TEXAS FIRE
E-76.1,2	END OF SHIFT	crew swap	YONILES, ROBERT J
E-260		(ENG6)	ENG6-151 TEXAS FIRE
E-261		(ENG6)	ENG6-FWS-462
E-264		(ENG6)	ENG6-E264-ATLWILDFIRE
E-276		(ENG3)	ENG3-WILDLANDS FIRE SERVICE
E-277.1,2,3,4	END OF SHIFT	crew swap	LODICE, HEINL, CULLUM, BLACKMER

OVERHEAD

O-37		(THSP)	NETTLES, MIKE
O-105		(FFT2)	KRATZ, MICHAEL KEVIN
O-166		(SOF2)	PERKINS, PHILLIP
O-175		(SITL)	MOCK, JOSEPH KEVIN
O-180		(ORDM)	ZABKA, RONALD
O-199	END OF SHIFT	(STEN)	MAYHALL, MATHEW
O-202	END OF SHIFT	(HECM)	ASHBY, ARLINGTON
O-166	END OF SHIFT	(SOF2)	PERKINS, PHILLIP
O-236	END OF SHIFT	(HMGB)	PHILLIPS, DAVE W
O-264	END OF SHIFT	(SEC2)	SMITH, WILL
O-270	END OF SHIFT	(SEC2)	RIDLEY, CHRIS

05/09/2017

E-149		(ENG6)	ENG6-GRIFFITH AUTO SHOP
E-237.1,2,3		crew swap	ENG6-FWS-E262
E-278.1,2,3		crew swap	ENG3-FAIRMOUNT-ENG34
E-279		(ENG3)	ENG3-ENGINE-4-62
E-395		(PU)	PICKUP-DNR136144

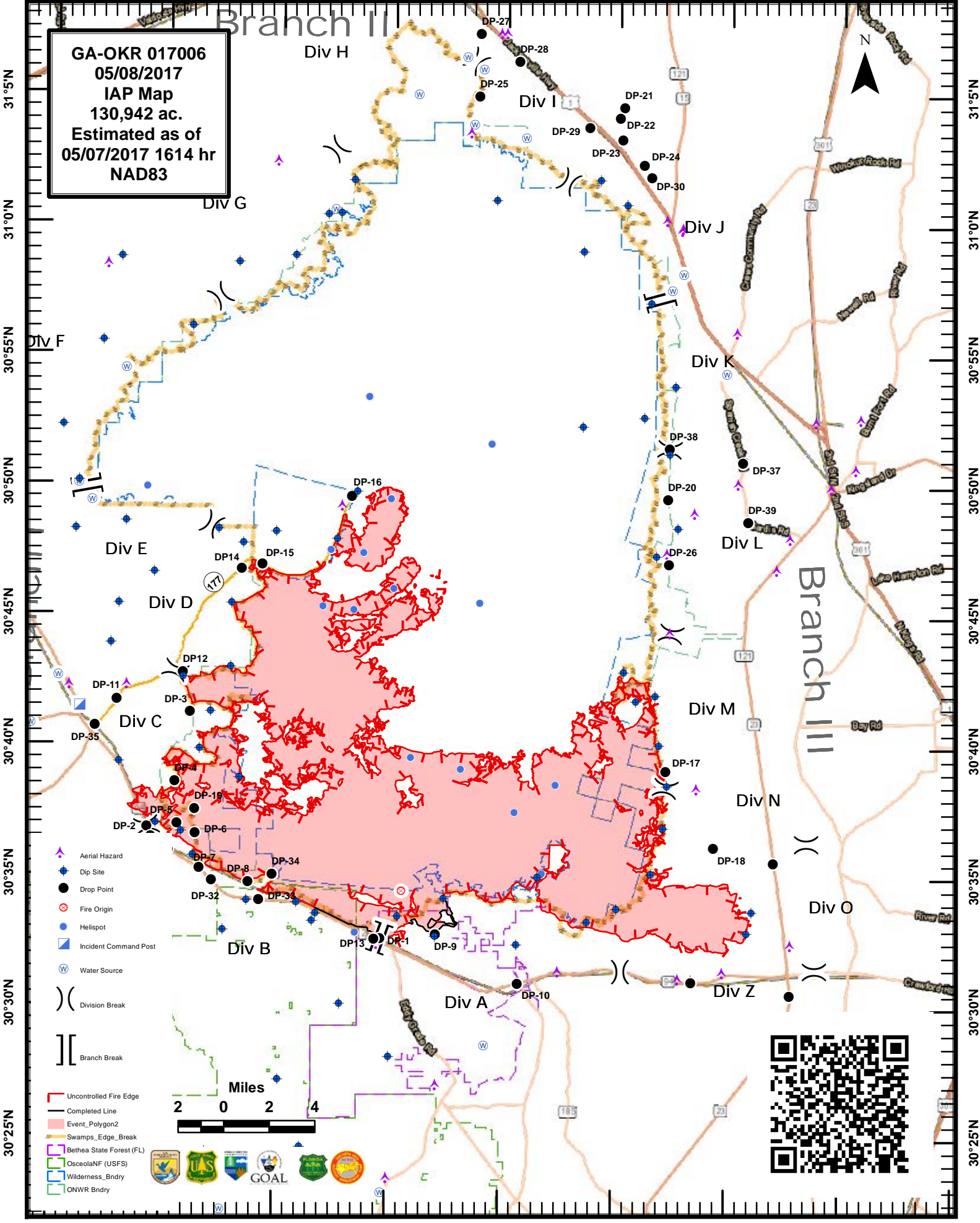
OVERHEAD

O-1	END OF SHIFT	(HECM)	ABERNATHY, JOHN MICHAEL
O-94		(DIVS)	JOHANSON, JOHN A
O-197		(TFLD)	JOHNSON, ERIK M

IF YOU ARE TO FLY HOME PLEASE CONTACT DEMOB AT LEAST 3 DAYS BEFORE FLIGHT TIME.
PHONE#1-912-637-5113 EMAIL demobwestmimsfire@gmail.com

82°35'W 82°30'W 82°25'W 82°20'W 82°15'W 82°10'W 82°5'W 82°0'W

GA-OKR 017006
05/08/2017
IAP Map
130,942 ac.
Estimated as of
05/07/2017 1614 hr
NAD83



31°5'N
31°0'N
30°55'N
30°50'N
30°45'N
30°40'N
30°35'N
30°30'N
30°25'N

31°5'N
31°0'N
30°55'N
30°50'N
30°45'N
30°40'N
30°35'N
30°30'N
30°25'N

- Aerial Hazard
- Dip Site
- Drop Point
- Fire Origin
- Helispot
- Incident Command Post
- Water Source
- Division Break
- Branch Break

- Uncontrolled Fire Edge
- Completed Line
- Event_Polygon2
- Swamps_Edge_Break
- Bethea State Forest (FL)
- OsceolaNF (USFS)
- Wilderness_Bndry
- ONWR Bndry



82°35'W 82°30'W 82°25'W 82°20'W 82°15'W 82°10'W 82°5'W 82°0'W 81°55'W

Medical Incident Report- "9 Line"

FOR ALL MEDICAL EMERGENCIES: IDENTIFY ON SCENE INCIDENT COMMANDER BY NAME AND POSITION AND ANNOUNCE "MEDICAL EMERGENCY" TO INITIATE RESPONSE FROM IMT COMMUNICATIONS/DISPATCH.

Use items one through nine to communicate situation to communications/dispatch.

1. CONTACT COMMUNICATIONS/DISPATCH

Ex: "Communications, Div. Alpha. Stand-by for Priority Medical Incident Report." (If life threatening request designated frequency be cleared for emergency traffic.)

2. INCIDENT STATUS: Provide incident summary and command structure.

Nature of Injury/Illness		<i>Describe the injury (Ex: Broken leg with bleeding)</i>
Incident Name		<i>Geographic Name + "Medical" (Ex: Trout Meadow Medical)</i>
Incident Commander		<i>Name of IC</i>
Patient Care		<i>Name of Care Provider (Ex: EMT Smith)</i>

3. INITIAL PATIENT ASSESSMENT: Complete this section for each patient. This is only a brief, initial assessment. Provide additional patient info after completing this 9 Line Report.

Number of Patients:	Male / Female	Age:	Weight:
Conscious? <input type="checkbox"/> YES <input type="checkbox"/> NO = MEDEVAC!			
Breathing? <input type="checkbox"/> YES <input type="checkbox"/> NO = MEDEVAC!			
Mechanism of Injury: <i>What caused the injury?</i>			
Lat/Long (Datum WGS84)			

4. SEVERITY OF EMERGENCY, TRANSPORT PRIORITY

SEVERITY	TRANSPORT PRIORITY
<input type="checkbox"/> URGENT-RED Life threatening injury or illness. <i>Ex: Unconscious, difficulty breathing, bleeding severely, 2° – 3° burns more than 4 palm sizes, heat stroke, disoriented.</i>	Ambulance or MEDEVAC helicopter. Evacuation need is IMMEDIATE.
<input type="checkbox"/> PRIORITY-YELLOW Serious Injury or illness. <i>Ex: Significant trauma, not able to walk, 2° – 3° burns not more than 1-2 palm sizes.</i>	Ambulance or consider air transport if at remote location. Evacuation may be DELAYED.
<input type="checkbox"/> ROUTINE-GREEN Not a life threatening injury or illness. <i>Ex: Sprains, strains, minor heat-related illness.</i>	Non-Emergency. Evacuation considered Routine of Convenience.

5. TRANSPORT PLAN:

Air Transport: (Agency Aircraft Preferred)

<input type="checkbox"/> Helispot	<input type="checkbox"/> Short-haul/Hoist	<input type="checkbox"/> Life Flight	<input type="checkbox"/> Other
Ground Transport:			
<input type="checkbox"/> Self-Extract	<input type="checkbox"/> Carry-Out	<input type="checkbox"/> Ambulance	<input type="checkbox"/> Other

6. ADDITIONAL RESOURCE/EQUIPMENT NEEDS:

<input type="checkbox"/> Paramedic/EMT(s)	<input type="checkbox"/> Crew(s)	<input type="checkbox"/> SKED/Backboard/C-Collar
<input type="checkbox"/> Burn Sheet(s)	<input type="checkbox"/> Oxygen	<input type="checkbox"/> Trauma Bag
<input type="checkbox"/> Medication(s)	<input type="checkbox"/> IV/Fluid(s)	<input type="checkbox"/> Cardiac Monitor/AED
<input type="checkbox"/> Other (i.e. splints, rope rescue, wheeled litter)		

7. COMMUNICATIONS:

Function	Channel Name/Number	Receive (Rx)	Tone/NAC *	Transmit (Tx)	Tone/NAC *
<i>Ex: Command</i>	<i>Forest Rpt, Ch. 2</i>	<i>168.3250</i>	<i>110.9</i>	<i>171.4325</i>	<i>110.9</i>
COMMAND					
AIR-TO-GRND					
TACTICAL					

*(NAC for digital radio system)

8. EVACUATION LOCATION:

Lat/Long (Datum WGS84) <i>EX: N 40 42.45' x W 123 03.24'</i>	
Patient's ETA to Evacuation Location:	
Helispot/Extraction Size and Hazards:	

9. CONTINGENCY:

Considerations: <i>If primary options fail, what actions can be implemented in conjunction with primary evacuation method? Be thinking ahead...</i>	REMEMBER: Confirm ETA's of resources ordered Act according to your level of training Be Alert. Keep Calm. Think Clearly. Act Decisively.
--	--