

DAY INCIDENT ACTION PLAN



WEST MIMS FIRE

**OPERATIONAL PERIOD
MAY 15, 2017
0730-1930**

QR for IAP



GA-OKR-017006
FWS FFF2000000KYJ70
USFS PRKYJ717_1502 (P)
NPS PFFSKJ7017.00.1

QR for Maps



Schedule

0730 Morning Briefing
1200 C & G
1500 Pre Planning Meeting
1700 Planning Meeting
1800 Night Briefing @ Bethea



INCIDENT OBJECTIVES (ICS 202)

1. Incident Name:	2. Operational Period: DAY SHIFT 0830-2030	
WEST MIMS	Date/Time From: 05/15/2017 0730 MON	Date/Time To: 05/15/2017 1930 MON
3. Objective(s):		
<ul style="list-style-type: none"> • Provide for the safety and security of incident personnel and public in all incident operations through sound risk assessment and hazard mitigations. • Maintain a positive working relationship with all adjacent landowners, cooperators State and Federal partners. Inform, involve and communicate incident planning and operations with all partners. • Confine all fires that are within the Okefenokee National Wildlife Refuge, inside the Refuge and/or inside the swamp edge break if possible. Aggressively suppress all fire outside the swamp edge boundary. • In cooperation with local timberland owners, use full suppression strategies and tactics to minimize damage to private timberlands and improvements and to prevent fires outside the Refuge from entering the Refuge. • Assist in management and suppression of additional fires (new starts or breakouts) in the vicinity as approved by Agency Administrators and Unified Incident Commanders. • Protect all cultural and archeological sites and structures within the refuge. • Manage the fires cost-effectively consistent with the values at risk. • Implement structure protection as necessary for at-risk facilities and communities. • Coordinate suppression actions with assigned Refuge Resource Advisors to protect endangered species. • Conduct all operations in a harassment-free environment. There will be a no tolerance atmosphere for harassment, alcohol, or illegal drug use. Everyone will be treated with dignity and respect. 		
4. Operational Period Command Emphasis:		
Branch IV Keep fire East of the North Prong of St Mary's river; West of Nassau county Florida; and North of Baker county Florida Branch III Keep fire North of Hwy 94, West of St Mary's River, and South of #19 road Keep fire within the Okefenokee Refuge Swamp Edge Break Boundary. Respond to initial attack fires on new starts within: *South of Suwannee Canal *Within the Okefenokee jurisdictional boundaries *Within state properties inside Perimeter Road		
General Situational Awareness:		
Utilize confine, contain, and point source protection strategies and tactics that commit operations personnel only where and when they can be successful, under conditions where important values at risk are protected with the least exposure.		
5. Site Safety Plan Required? Yes <input type="checkbox"/> No <input checked="" type="checkbox"/>		
Approved Site Safety Plan(s) Located at:		
6. Incident Action Plan (the items checked below are included in this Incident Action Plan):		
<input checked="" type="checkbox"/> ICS 202 <input checked="" type="checkbox"/> ICS 203 <input checked="" type="checkbox"/> ICS 204 <input checked="" type="checkbox"/> ICS 205 <input type="checkbox"/> ICS 205A <input checked="" type="checkbox"/> ICS 206	<input type="checkbox"/> ICS 207 <input checked="" type="checkbox"/> ICS 208 <input checked="" type="checkbox"/> ICS 220 <input checked="" type="checkbox"/> Map/Chart <input checked="" type="checkbox"/> Weather Forecast/Tides/Currents	Other Attachments: <input checked="" type="checkbox"/> PIO MESSAGE <input checked="" type="checkbox"/> FINANCE MESSAGE <input checked="" type="checkbox"/> TENTATIVE DEMOB <input checked="" type="checkbox"/> MAP
7. Prepared by: BRIAN ELDREDGE Position/Title: PSC1	Signature:	
8. Approved by Incident Commander:	Name: MIKE DUEITT	Signature:
ICS 202	IAP Page	Date/Time: 05/14/2017 2000

ORGANIZATION ASSIGNMENT LIST (ICS 203)

1. Incident Name:		2. Operational Period: DAY SHIFT 0830-2030	
WEST MIMS		Date/Time From: 05/15/2017 0730	MON Date/Time To: 05/15/2017 1930 MON
3. Incident Commander(s) and Command Staff:		FIRE BEHAVIOR ANALYST; AIR RESOURCE ADVISOR	
IC/UC	MICHAEL DUEITT; BUCK KLINE; RICK DOLAN, MIKE GOICOECHEA (T)	GARY JARVIS; KELLY CAGLE, MATT FILBERT (T) DAN BYRD; THSP-ARA	
SAFETY OFFICER	BRAD LIDELL; MICHAEL COOK; TONY RIVERS (T); CHARLIE PATTERSON (T)	6. Logistics Section:	
INFORMATION OFFICER	CATHERINE HIBBARD; BONNIE STRAWSER; MICHAEL DAVIS (T)	CHIEF	JOHNNY SMITH
LIAISON OFFICER	JD LEE, KEITH LAWRENCE ANDY GASTON	LOGS CHIEF EAST	MICHAEL BURCHARD MARK MORGAN (T)
4. Agency/Organization Representative(s):		SERVICE BRANCH DIRECTOR	JOE WALKER
Agency/Organization	Name	SUPPLY UNIT	TEDDY MESSENGER - W RON ZABKA - E
GFC PROTECTION	FRANK SORRELLS	FACILITIES UNIT	ISH ENNIS
OKE REF MGR/ASSIST	MICHAEL LUSK; SARA CLARDY	GROUND SUPPORT UNIT	PATRICK WRIGHT; CHARLES WEATHERS
OKE REF FMO	REESE KERBOW	COMMUNICATIONS UNIT	JERRY PATRICK; BARRY STEARNS (T)
GOAL	JIM BARRETT	MEDICAL UNIT	FRED ALDER
FLDOF	JOHN RAULERSON	COMT	RAY ADAMS; ROY FORTENBERRY
GEMA	DIANE ADAMS	FOOD UNIT	ANDREW BOGGS
NORFOLK SOUTHERN	CHAD EDWARDS	ORDM	NINA GAINEY; LISA MEEKINS (T)
CLINCH CO EMA	WILL JOYCE; RANDY PATTEN	RCDM	JOHN HAWKINS; JIM GACEY; MARC PRATT (T)
CHARLTON CO EMA	BRUCE YOUNG	EQPM	KIRBY HENNINSSSEN; JASON MCHAN
GADOT	TREVOR BROWN	RADO	
5. Planning Section:		7. Operations Section:	
CHIEF	BRIAN ELDREDGE TERRY PIERCE	OPS SECTION CHIEF	JIM DURRWACHTER; LARRY SMITH (T) SHANNON BOWMAN (T)
PSC2	JASON BRAUNSTEIN (T)	PLANNING OPS	STEVE WEAVER, BEALE MONDAY (T) DAVE WALKER, MIKE DAVIS (T)
RESOURCES UNIT	MISSY FORDER; DONNA THOMAS TIFFANY PATE; SCOTT WELLS; JEFF TURNER (T)	NIGHT OPS SECTION CHIEF (BRANCH I)	JAMES SCHWARTZ
STATUS CHECKIN	CARLA ROBERTS; SUE SOBIESKI; SHANEEN MOORE (T); BRANDEN TOLVER (T)	NIGHT OPS SECTION CHIEF (BRANCH III & VI)	PETE MYERS
SITUATION UNIT	TERRY BOWERMAN KEVIN HIERS (T)	Branch	I
DEMOBILIZATION UNIT	KAREN DAVIS, DAVID BROWN DALE WINE (T)	BRANCH DIRECTOR DAY	DARRELL MILLER
DOCUMENTATION UNIT	JAN FLEMING	DIVISION/GROUP	DIV B TIM STILTNER; DAVID QUESINBERRY (T)
ITSS	TONY FARMER, CORY NICOLSON TERRANCE CHAPLIN (T)	DIVISION/GROUP	DIV C BERT PLANTE; ROBERT CLAYTOR (T)
TRAINING SPECIALIST	LARRY MOORE, JR BRAD STEWART	DIVISION/GROUP	DIV D JOEL BURGETT
GIS SPECIALIST	ANDREW THOMPSON, DAVID JONES KEVIN WINTER, JORDAN HERRIN (T)	DIVISION/GROUP	DIV E GREG TOLL SHELLY CROOK
INCIDENT METEOROLOGIST	JOE GOUDSWARD	DIVISION/GROUP	FL FFS CONTINGENCY GLEN DAVIS; JOHN RAULERSON
		DIVISION/GROUP	WEST ROAD ROB DAVIS
9. Prepared By:	Name: DONNA THOMAS	Position/Title: RESL	Signature:
ICS 203	IAP Page	Date/Time: 05/14/2017 2000	

ORGANIZATION ASSIGNMENT LIST (ICS 203)

1. Incident Name:		2. Operational Period: DAY SHIFT 0830-2030	
WEST MIMS		Date/Time From: 05/15/2017 0730 MON	Date/Time To: 05/15/2017 1930 MON
DIVISION/GROUP	MAINTENANCE	ROB DAVIS	SUPERVISOR DEREK WHEELER (T)
DIVISION/GROUP	DIV NIGHT B/C	PAUL MANCUSO	HEB1 POGO MARC RUDKIN
DIVISION/GROUP	DIV NIGHT D/E	RUSSELL COPP	8. Finance/Administration Section:
DIVISION/GROUP	NIGHT STRUCTURE	CHRIS OBRIEN	
Branch	II		
CHIEF		BONNY JOHNSON	
DEPUTY		JAMES MEREDITH	
PROCUREMENT UNIT		P. J. VILHAUER	
CONTRACTING OFFICER		THERESA HOOD	
COST UNIT		CAROLYN DETWILER; JENNY CROSS (T)	
TIME UNIT		JEAN FRICK	
COMPENSATION UNIT		VERMA COLEMAN STACEY EATON (T)	
LOCAL FINANCE LIAISON		REGGIE LANIER	
PLANNING OPERATIONS CHIEF	DAVE WALKER MIKE DAVIS (T)		
BRANCH DIRECTOR	RON SMITH		
BRANCH DIRECTOR NIGHT	ROBERT LAENG		
DIVISION/GROUP	IA	DONNIE HARRIS	
DIVISION/GROUP	M/N	BRIAN BROWNING SAM MCFARLAND, SUNBEAR VIERRA	
DIVISION/GROUP	O	ROBERT THORP BRANDON HUGHES (T)	
DIVISION/GROUP	DIV NIGHT M/N	UNSTAFFED	
DIVISION/GROUP	DIV NIGHT O	MICHAEL CACHERO	
Branch	IV		
PLANNING OPERATIONS CHIEF	DAVE WALKER MIKE DAVIS (T)		
BRANCH DIRECTOR	STEVE MILLER		
NIGHT BRANCH DIRECTOR	ROBERT TRINCADO BRYCE THOMAS (T)		
DIVISION/GROUP	A	JAMES ROURKS	
DIVISION/GROUP	CONTINGENCY	BLAIR JOINER CHAD WILLIAMSON	
DIVISION/GROUP	DAY STRUCTURE PROTECTION	CRAIG ROBERTSON RANDY JONES	
DIVISION/GROUP	Y	JOE MORRIS	
DIVISION/GROUP	Z	JIMMY FLANNAGAN	
DIVISION/GROUP	DIV NIGHT A/Y	JOHN MOLVE	
DIVISION/GROUP	NIGHT STRUCTURE PROTECTION	HAROLD KIBBE JOHN ALLBRIGHT (T)	
DIVISION/GROUP	DIV NIGHT Z	SHANE STURGILL	
7b. Air Operations Branch:			
AIR OPS BRANCH DIRECTOR	TIM FAUST		
DEPUTY AIR OPS BRANCH DIRECTOR	BRAD BERNARDY		
AIR SUPPORT GROUP SUPERVISOR	JOHN MASON		
AIR ATTACK	MARK NUNEZ; CHRIS WORREL		
9. Prepared By:	Name: DONNA THOMAS	Position/Title: RESL	Signature:
ICS 203	IAP Page	Date/Time: 05/14/2017 2000	



To: All Incident Personnel, West Mims Fire 2017

As the Unified Command Incident Commanders, we have a policy of “zero tolerance” of inappropriate behavior during incident operations. Any form of harassment, discriminatory practices, or disrespectful behavior will not be tolerated. Known or reported acts will be dealt with appropriately.

We are particularly concerned about the perception that alcohol has a place in any of the Incident facilities. It is not appropriate to indulge in alcoholic beverages during any fire assignment.

The National Team from the Southern Region has a policy of “NO ALCOHOL” from the time of dispatch until the time of physical release from the Incident. Members of the Team voluntarily comply with this policy; all incident personnel will be expected to do so also.

We endorse, support, and expect an attitude of mutual respect for all Incident personnel and the public we serve. We also, endorse the attitude and work ethic that places “Safety First, every time on every Incident.” We expect nothing less.

/s/ Mike Dueitt
/s/ Rick Dolan
/s/ Buck Kline
Incident Commanders



Fire Weather Forecast



FORECAST NO: 33
PREDICTION FOR: Monday Shift
SHIFT DATE: May 15, 2017
FORECAST ISSUED: 1800 May 14, 2017

NAME OF FIRE: West Mims Fire
UNIT: Okefenokee National Wildlife Refuge
Incident Meteorologist: Joe Goudsward 240-778-5279

DISCUSSION: High pressure will continue to build in across the area for the next several days. This will result in hot and dry conditions during the operational period. Areas of low clouds and fog will persist through mid-morning. Temperatures are expected to climb back into the 90s this afternoon with humidity dropping into the 20s. NE winds will gradually shift to more of an easterly direction.

TODAY (MONDAY DAY SHIFT):

- WEATHER: Morning low clouds and fog, otherwise mainly clear skies.
- WIND (20 FT): NE 3 to 6 mph, turning to the E by afternoon and increasing slightly to 4 to 7 mph.
- MAX TEMPERATURES: 90-94 MIN RH: 23-28%
- LAL: 1 CHANCE OF RAIN: 0% DISPERSION (MAX): 50
- MIXING HEIGHT: 6700 RAINFALL: 0 TRANSPORT WINDS: E 10 mph

TONIGHT (MONDAY NIGHT SHIFT):

- WEATHER: Mostly clear .Patchy fog developing towards morning.
- WIND (20 FT): East 3 to 6 mph in the evening, becoming calm by morning.
- MIN TEMPERATURES: 59-64 MAX RH:95-100% MAX LVORI: 8
- LAL: 1 CHANCE OF RAIN: 0% RAINFALL: 0

HOURLY WEATHER FORECAST (LST) Monday 1000 through Tuesday 0800

Time	1000	1200	1400	1600	1800	2000	2200	2400	0200	0400	0600	0800
Temp °F	62	81	88	93	87	80	72	70	64	62	60	63
RH %	67	58	31	26	32	42	60	77	84	97	100	95
Wind Dir	NE	NE	NE	E	E	E	E	ESE	ESE	Calm	Calm	Calm
Wind Spd mph	3	5	7	7	6	4	3	3	3	Calm	Calm	Calm
Wind Gst mph												
Rain Chance%	0	0	0	0	0	0	0	0	0	0	0	0
Weather												

TUESDAY:

- WEATHER: Patchy fog in the morning, otherwise becoming mostly clear.
- WIND (20 FT): Calm in the morning, becoming SE 4 to 8 mph in the afternoon.
- MAX TEMPERATURES: 92-96 MIN RH: 23-28%
- LAL: 1 CHANCE RAIN: 0% DISPERSION (MAX): 60
- MIXING HEIGHT: 6800 RAINFALL: 0 TRANSPORT WINDS: SE 10 mph

Sunrise Monday: 6:36 am

Sunset Monday: 8:18 pm

Sunrise Tuesday: 6:35 am

RAWS Observations:

Jones Island



Eddy Tower



OKE East



OKE NW



FIRE BEHAVIOR FORECAST

FORECAST NUMBER: #26	TYPE OF FIRE: Wildland
FIRE NAME: West Mims	OPERATIONAL PERIOD: 05/15/2017
DATE ISSUED: 05/14/2017	TIME ISSUED: 1800
UNIT: Okefenokee National Wildlife Refuge	Written: Kelly Cagle FBAN (t) Signed: Gary Jarvis FBAN

FUEL ASSUMPTIONS: Timber with shrub understory (pine plantation) will be the most active fuel type. Current fuel conditions are favorable for very active fire behavior within all fuel types. Expect all fuels to burn readily, including those that appear green. Re-burn potential is very high. Recent moisture will be short-lived.

The fuel moisture for today is:

Calculated 1 hr fuel 4%, 10 hr fuel 7%, 100 hr fuel 15%

ERC levels have fallen with recent rain, but will quickly rebound with return of dry weather.

Critical fire behavior thresholds: 1 HR Fuel Moisture <6%, RHs below 40% and a Dispersion Index greater than 60.

- **WEATHER:** Morning low clouds and fog. Otherwise mainly clear skies. Wind (20ft): NE 3 to 6. Turning East by afternoon 4 to 7 mph. Max temp: 90-94 Min RH: 23-28% LAL 1
- **Chance of Rain: 0 %** Amount: 0 Mixing Ht: 6700 Transport Wind Speed: E at 10mph
- **Dispersion: 50**

General Fire Behavior Forecast: Fuels should begin to dry enough to readily carry fire-especially in open stands with abundant sunshine. Expect by early-afternoon most fuels will be available to contribute to fire spread. Remember – these fuels were extremely conditioned from weeks of dry weather. They will return to contributors rather quickly. Significant activity is possible, with spotting and sustained runs. Initial attack is high probability. New starts could organize quickly and begin to move – especially in areas just north and west of the fire.

SPECIFICS: All divisions- Smoldering and Creeping in previously burned areas. Potential for re-burn returns. Unburned pockets of interior fuels could begin to consume as well. Major fire activity in Okefenokee Swamp is not expected today, but some activity quite possible. Initial Attack should plan for activity. Reference lightning map. New fires have potential to develop deceptively quickly.

PREDICTIONS FOR MOST ACTIVE TIME OF PEAK BURNING PERIOD USING WEATHER FROM INCIDENT IMET

Fuel Model	Fire Behavior
SH 3 (shrub in the swamp)	ROS 4 to 8 ch/hr (less than .1 mph) FL 2 to 4 feet average
7 (Timber w/shrub palmetto)	ROS 20 to 30 ch/hr (.25 to .35 mph) FL 5 to 9 feet average
8 Timber Litter (Pine needles in re-burn areas)	ROS 2 to 3 ch/hr (less than .1 mph) FL 1 to 2 ft. (higher Flame lengths could be expected where shrub component remains and consumes)
Spotting	.1 to .2 miles could not be ruled out
Probability of Ignition	79%

AIR OPERATIONS: Areas of low clouds and fog are likely to persist through mid-morning. Visibility likely to be impacted early.

FIRE BEHAVIOR SAFETY: Okefenokee Swamp is famous for producing fires that come alive after substantial rainfall. In fact – that is almost the norm. Do not be complacent about this particular fire. It has enormous potential.

Division/Group Assignment List (ICS 204 WF)

1. Incident Name:			3.			
WEST MIMS			Branch:		Division/Group:	
2. Operational Period: DAY SHIFT 0830-2030			I		B	
Date/Time From: 05/15/2017 0730 MON		Date/Time To: 05/15/2017 1930 MON				
4. Operations Personnel						
PLANNING OPERATIONS CHIEF		STEVE WEAVER BEALE MONDAY (T)		OPERATIONS CHIEF		JIM DURRWACHTER L. SMITH (T); S. BOWMAN (T)
BRANCH DIRECTOR		DARRELL MILLER		DIVISION/GROUP SUPERVISOR		TIM STILTNER, DAVID QUISENBERRY (T)
SAFETY		BRAD LIDELL; MIKE COOK TONY RIVERS (T)		AIR TACTICAL GROUP SUPERVISOR		CHRIS WORRELL
5. Resources Assigned this Period						
Strike Team / Task Force / Resource Designator		LWD	Leader	Number Persons	Drop Off PT./Time	Pick Up PT./Time
STEQ O-498		05/25	WILLIE MICHAEL HOGGARD	1	ICP/0730	ICP/1930
STEN O-325		05/19	JOE FOWLER	1	ICP/0730	ICP/1930
TFLD O-359		05/21	TRAVIS WRIGHT	1	ICP/0730	ICP/1930
TFLD (T) O-340		05/20	BRAD WHITTINGTON	1	ICP/0730	ICP/1930
ENG6 - AR-OZF - PH - E-641 E-76		05/21	MIKE KOCH	3	ICP/0730	ICP/1930
ENG6- SMR #4461 E-1		05/26	MEGAN BIEBER	2	ICP/0730	ICP/1930
ENG6 - NC-POR PLE1 E-2		05/21	ANTHONY DAVIS	2	ICP/0730	ICP/1930
ENG6 SOUTHEAST FOREST RESOURCES E-58		05/30	HAWTHORNE	3	ICP/0730	ICP/1930
WTS1- SUPPORT WILDLANDS FIRE SERVICE I E-132		05/15	DAVID SWEENY	1	ICP/0730	ICP/1930
STEN O-353		05/21	ANDREW C MILLER	1	ICP/0730	ICP/1930
ENG6 - SCS #14248 E-148		05/15	JEREMY GANTT	2	ICP/0730	ICP/1930
ENG6 - WILDLANDS FIRE SERVICE - D65331 - 1 E-144		05/24	MICHAEL MADISON	2	ICP/0730	ICP/1930
EMPF E-316 619-933-5546		05/16	MARTIN CORRILO	1	ICP/0730	ICP/1930
STPS O-18.10		05/16	BILL KORNRUMPH	1	ICP/0730	ICP/1930
SOF2 O-252 208-954-4105		05/31	CHRIS CHURCH	1	ICP/0730	ICP/1930
6. Control Operations/Work Assignments:						
8. Division/Group Communication Summary						
Function	Channel	RX Frequency N/W	RX Tone/NAC	TX Frequency N/W	TX Tone/NAC	Mode
COMMAND	2	159.1200N	NONE	151.3700N	100.0	A
AIR TO GROUND	4	169.2000N	NONE	169.2000N	NONE	A
TACTICAL	9	159.2850N	NONE	159.2850N	156.7	A
AIR TO GROUND	14	166.6750N	NONE	166.6750N	NONE	A
AIR TO GROUND	15	169.1500N	NONE	169.1500N	NONE	A
AIR GUARD	16	168.6250N	NONE	168.6250N	110.9	A
9. Prepared By (Resource Unit Leader)			Approved By (Planning Section Chief)		Date	Time
DONNA THOMAS			BRIAN ELDREDGE		05/14/2017	2000

Division/Group Assignment List (ICS 204 WF)

1. Incident Name:			3.			
WEST MIMS			I	B		
2. Operational Period: DAY SHIFT 0830-2030						
Date/Time From: 05/15/2017 0730	MON	Date/Time To: 05/15/2017 1930	MON			
4. Operations Personnel						
PLANNING OPERATIONS CHIEF		STEVE WEAVER BEALE MONDAY (T)		OPERATIONS CHIEF		JIM DURRWACHTER L. SMITH (T); S. BOWMAN (T)
BRANCH DIRECTOR		DARRELL MILLER		DIVISION/GROUP SUPERVISOR		TIM STILTNER, DAVID QUISENBERRY (T)
SAFETY		BRAD LIDELL; MIKE COOK TONY RIVERS (T)		AIR TACTICAL GROUP SUPERVISOR		CHRIS WORRELL
6. Control Operations/Work Assignments:						
Purpose: Keep fire North of GA 94/FL 2						
Task: Patrol and mop up within 50 ft of fire perimeter. Respond to any new starts within Div. Determine and report contained line to Planning OSC1.						
End State: Confine fire perimeter to reduce threats and minimize damage to private timberlands and resources values at risk.						
7. Special Instructions:						
Ensure LCES is in place before operations begin and stay hydrated. Drive defensively and with lights on at all times. Identify escape routes.						
Medical Emergency Channel: Command ETA for Ambulance to Scene: Air: 10 mins Ground: 15 mins Approved Helispot: Drop Point 1 Lat: N 30 30.929 Long: W 82 14.174 Primary - Ambulance is ground contact with air ambulance Secondary - IWI- IC or approved person will use channel 16 (Air Guard) for ground contact with air ambulance						
8. Division/Group Communication Summary						
Function	Channel	RX Frequency N/W	RX Tone/NAC	TX Frequency N/W	TX Tone/NAC	Mode
COMMAND	2	159.1200N	NONE	151.3700N	100.0	A
AIR TO GROUND	4	169.2000N	NONE	169.2000N	NONE	A
TACTICAL	9	159.2850N	NONE	159.2850N	156.7	A
AIR TO GROUND	14	166.6750N	NONE	166.6750N	NONE	A
AIR TO GROUND	15	169.1500N	NONE	169.1500N	NONE	A
AIR GUARD	16	168.6250N	NONE	168.6250N	110.9	A
9. Prepared By (Resource Unit Leader)			Approved By (Planning Section Chief)		Date	Time
DONNA THOMAS			BRIAN ELDREDGE		05/14/2017	2000

Division/Group Assignment List (ICS 204 WF)

1. Incident Name:			3.			
WEST MIMS			Branch:		Division/Group:	
2. Operational Period: DAY SHIFT 0830-2030			I		C	
Date/Time From: 05/15/2017 0730 MON		Date/Time To: 05/15/2017 1930 MON				
4. Operations Personnel						
PLANNING OPERATIONS CHIEF		STEVE WEAVER BEALE MONDAY (T)		OPERATIONS CHIEF		JIM DURRWACHTER L. SMITH (T), S. BOWMAN (T)
BRANCH DIRECTOR		DARRELL MILLER		DIVISION/GROUP SUPERVISOR		BERT PLANTE, ROBERT CLAYTOR (T)
SAFETY		BRAD LIDELL, MICHAEL COOK TONY RIVERS (T)		AIR TACTICAL GROUP SUPERVISOR		CHRIS WORRELL
5. Resources Assigned this Period						
Strike Team / Task Force / Resource Designator		LWD	Leader	Number Persons	Drop Off PT./Time	Pick Up PT./Time
CREW - T2IA - PATRICK ENVIRONMENTAL, INC. - NCC - 20A C-11		05/22	AUSTIN HERGERT	19	ICP/0730	ICP/1930
ENG6 - WILDLANDS FIRE SRVC INC-162856 - 22 E-146		05/22	BRIAN TERRY	3	ICP/0730	ICP/1930
ENG6 E-454		05/21	TYLER GALLAGHER	2	ICP/0730	ICP/1930
ENG6 - 61 - VASHP E-450		05/21	JOE JARRELLS	3	ICP/0730	ICP/1930
ENG6-ATTACK-ONE FIRE MGMT SRVC INC E-457		05/21	WAYNE TAYLOR	2	ICP/0730	ICP/1930
ENG6 SHOAL CREEK - E651 E-78		05/24	WILLIAM LAYFIELD	3	ICP/0730	ICP/1930
ENG6 - WILDLANDS FIRE SRVC INC - A57267 - 8 E-459		05/21	DOUG SCOTT	3	ICP/0730	ICP/1930
ENG4 - NC-NCS - PP-1434 - D3 E-542		05/23	WALTER GORDON	2	ICP/0730	ICP/1930
WTS2 - SUPPORT TIPTON & YOUNG E-135		05/31	KEN SWAIN	1	ICP/0730	ICP/1930
WTS2 SUPPORT STRICKLANDS TRACTOR E-265		05/21	LUCIUS CORBITT	1	ICP/0730	ICP/1930
TFLD O-349		05/22	JEFF GOYINGS	1	ICP/0730	ICP/1930
TFLD O-418		05/23	PAUL AMUNDSON	1	ICP/0730	ICP/1930
DOZ2 E-512		05/24	WESLEY WHISENHUNT	1	ICP/0730	ICP/1930
STEQ O-558		05/25	DUKE CAMPBELL	1	ICP/0730	ICP/1930
TPL2 E-669		05/25	JIMMY ANDERSON	2	ICP/0730	ICP/1930
TPL2 E-668		05/25	CLIFF LEWIS	2	ICP/0730	ICP/1930
8. Division/Group Communication Summary						
Function	Channel	RX Frequency N/W	RX Tone/NAC	TX Frequency N/W	TX Tone/NAC	Mode
COMMAND	2	159.1200N	NONE	151.3700N	100.0	A
AIR TO GROUND	4	169.2000N	NONE	169.2000N	NONE	A
TACTICAL	12	159.4425N	NONE	159.4425N	NONE	A
AIR TO GROUND	14	166.6750N	NONE	166.6750N	NONE	A
AIR TO GROUND	15	169.1500N	NONE	169.1500N	NONE	A
AIR GUARD	16	168.6250N	NONE	168.6250N	110.9	A
9. Prepared By (Resource Unit Leader)			Approved By (Planning Section Chief)		Date	Time
DONNA THOMAS			BRIAN ELDREDGE		05/14/2017	2000

Division/Group Assignment List (ICS 204 WF)

1. Incident Name:			3.			
WEST MIMS			Branch:		Division/Group:	
2. Operational Period: DAY SHIFT 0830-2030			I		C	
Date/Time From: 05/15/2017 0730 MON		Date/Time To: 05/15/2017 1930 MON				
4. Operations Personnel						
PLANNING OPERATIONS CHIEF		STEVE WEAVER BEALE MONDAY (T)		OPERATIONS CHIEF		JIM DURRWACHTER L. SMITH (T), S. BOWMAN (T)
BRANCH DIRECTOR		DARRELL MILLER		DIVISION/GROUP SUPERVISOR		BERT PLANTE, ROBERT CLAYTOR (T)
SAFETY		BRAD LIDELL, MICHAEL COOK TONY RIVERS (T)		AIR TACTICAL GROUP SUPERVISOR		CHRIS WORRELL
5. Resources Assigned this Period						
Strike Team / Task Force / Resource Designator		LWD	Leader	Number Persons	Drop Off PT./Time	Pick Up PT./Time
TPL2 E-670		05/25	MATT DUGGAN	2	ICP/0730	ICP/1930
WATER TENDER, TYPE 1 SUPPORT - 39715 E-700		05/26	JAMES POWELL	1	ICP/0730	ICP/1930
STEQ O-564		05/26	RANDALL MOSLEY	1	ICP/0730	ICP/1930
TPL2 - GFC3230 E-688		05/27	DAVID MASON	1	ICP/0730	ICP/1930
TPL3 - GFC1536 E-689		05/27	WALTER BIRD	1	ICP/0730	ICP/1930
TPL3 - GFC3186 E-687		05/27	WILLIAM K BRADY	1	ICP/0730	ICP/1930
EMPF - E-316 619-933-5546		05/17	MARTIN CORRILO	1	ICP/0730	ICP/1930
SOF2 O-541		05/25	LOUIE CASAUS	1	ICP/0730	ICP/1930
6. Control Operations/Work Assignments:						
Purpose: Keep fire East of swamp edge break.						
Task: Patrol and mop up within 50 ft of fire perimeter. Respond to any new starts within Div. Prep fireline around logging debris as needed coordinating control operations with logging operators. Determine and report contained line to Planning OSC1.						
End State: Confine fire perimeter to reduce threats and minimize damage to private timberlands and resources values at risk.						
7. Special Instructions:						
8. Division/Group Communication Summary						
Function	Channel	RX Frequency N/W	RX Tone/NAC	TX Frequency N/W	TX Tone/NAC	Mode
COMMAND	2	159.1200N	NONE	151.3700N	100.0	A
AIR TO GROUND	4	169.2000N	NONE	169.2000N	NONE	A
TACTICAL	12	159.4425N	NONE	159.4425N	NONE	A
AIR TO GROUND	14	166.6750N	NONE	166.6750N	NONE	A
AIR TO GROUND	15	169.1500N	NONE	169.1500N	NONE	A
AIR GUARD	16	168.6250N	NONE	168.6250N	110.9	A
9. Prepared By (Resource Unit Leader)			Approved By (Planning Section Chief)		Date	Time
DONNA THOMAS			BRIAN ELDREDGE		05/14/2017	2000

Division/Group Assignment List (ICS 204 WF)

1. Incident Name:			3.			
WEST MIMS			I		C	
2. Operational Period: DAY SHIFT 0830-2030						
Date/Time From: 05/15/2017 0730 MON		Date/Time To: 05/15/2017 1930 MON				
4. Operations Personnel						
PLANNING OPERATIONS CHIEF		STEVE WEAVER BEALE MONDAY (T)		OPERATIONS CHIEF		JIM DURRWACHTER L. SMITH (T), S. BOWMAN (T)
BRANCH DIRECTOR		DARRELL MILLER		DIVISION/GROUP SUPERVISOR		BERT PLANTE, ROBERT CLAYTOR (T)
SAFETY		BRAD LIDELL, MICHAEL COOK TONY RIVERS (T)		AIR TACTICAL GROUP SUPERVISOR		CHRIS WORRELL
7. Special Instructions:						
<p>Ensure LCES is in place before operations begin and stay hydrated. Drive defensively and with lights on at all times. Identify escape routes. Logging operations are continuing. Stay clear of cutting areas. Please be mindful of logging operations that will be ongoing. Ensure that all personnel stay clear of felling operations. Pay attention for potential reburn in logging area. Work with Gilyard Logging foreman on any suppression actions within the logging area.</p> <p>Additional Resources: Superior Pine Tractor Plow D6; SP-83, SP-85, SP-87</p> <p>Medical Emergency Channel: Command ETA for Ambulance to Scene: Air: 10 mins Ground: 25 mins Approved Helispot: Drop Point 3 Lat: N 30 41.257 Long: W 82 28.833</p> <p>Primary - Ambulance is ground contact with air ambulance Secondary - IWI- IC or approved person will use channel 16 (Air Guard) for ground contact with air ambulance</p>						
8. Division/Group Communication Summary						
Function	Channel	RX Frequency N/W	RX Tone/NAC	TX Frequency N/W	TX Tone/NAC	Mode
COMMAND	2	159.1200N	NONE	151.3700N	100.0	A
AIR TO GROUND	4	169.2000N	NONE	169.2000N	NONE	A
TACTICAL	12	159.4425N	NONE	159.4425N	NONE	A
AIR TO GROUND	14	166.6750N	NONE	166.6750N	NONE	A
AIR TO GROUND	15	169.1500N	NONE	169.1500N	NONE	A
AIR GUARD	16	168.6250N	NONE	168.6250N	110.9	A
9. Prepared By (Resource Unit Leader)			Approved By (Planning Section Chief)		Date	Time
DONNA THOMAS			BRIAN ELDREDGE		05/14/2017	2000

Division/Group Assignment List (ICS 204 WF)

1. Incident Name:			3.			
WEST MIMS			I		D	
2. Operational Period: DAY SHIFT 0830-2030						
Date/Time From: 05/15/2017 0730 MON		Date/Time To: 05/15/2017 1930 MON				
4. Operations Personnel						
PLANNING OPERATIONS CHIEF		STEVE WEAVER BEALE MONDAY (T)		OPERATIONS CHIEF		JIM DURRWACHTER L. SMITH (T); S. BOWMAN; (T)
BRANCH DIRECTOR		DARRELL MILLER		DIVISION/GROUP SUPERVISOR		JOE BURGETTE HEATHER GRIFFIN (T)
SAFETY		BRAD LIDDEL, MICHAEL COOK TONY RIVERS (T)		AIR TACTICAL GROUP SUPERVISOR		CHRIS WORRELL
5. Resources Assigned this Period						
Strike Team / Task Force / Resource Designator		LWD	Leader	Number Persons	Drop Off PT./Time	Pick Up PT./Time
MODULE - WILDLAND FIRE - SW SAGUARO NP O-477		05/21	JASON THIVENER	10	ICP/0730	ICP/1930
COLQUIT 86 SUPPLY TRUCK 10-460 E-118		05/21	EDWARD WILEY	1	ICP/0730	ICP/1930
STEN O-360		05/21	ERIC WARD		ICP/0730	ICP/1930
ENG6 - OSCEOLA - 641 E-157		05/28	JASON MARTIN	3	ICP/0730	ICP/1930
ENG6 - WILDLANDS FIRE SERVICE E-262		06/03	CHAD ANDERSON	2	ICP/0730	ICP/1930
ENG6 - ATLANTIC WILDFIRE RESOURCES E-264		05/20	SAMUEL ELKINS	3	ICP/0730	ICP/1930
ENG6 - ENGINE - 4-87 E-613		05/26	JESSE CAUSER		ICP/0730	ICP/1930
ENG6 - WILDLANDS FIRE SERVICE INC - 339712-9 E-458		05/21	IRVIN SAUL	3	ICP/0730	ICP/1930
ENG6 - ENGINE - 4-86 E-610		05/26	MURRAY ROSENGARTEN	6	ICP/0730	ICP/1930
TFLD O-511		05/13	KEVIN TOMLINSON	1	ICP/0730	ICP/1930
DOZ3- WELBORN AQUA HAUL AND FIRE SERVICES, INC. E-514			JERRY WELBORN	2	ICP/0730	ICP/1930
DOZ2 OK-OKS ECU #2178 E-503		05/23	WILLIAM OWENS	1	ICP/0730	ICP/1930
TFLD O-419		05/22	GEORGE M LIBERCAJT	1	ICP/0730	ICP/1930
8. Division/Group Communication Summary						
Function	Channel	RX Frequency N/W	RX Tone/NAC	TX Frequency N/W	TX Tone/NAC	Mode
COMMAND	2	159.1200N	NONE	151.3700N	100.0	A
AIR TO GROUND	4	169.2000N	NONE	169.2000N	NONE	A
TACTICAL	13	159.4125N	NONE	159.4125N	NONE	A
AIR TO GROUND	14	166.6750N	NONE	166.6750N	NONE	A
AIR TO GROUND	15	169.1500N	NONE	169.1500N	NONE	A
AIR GUARD	16	168.6250N	NONE	168.6250N	110.9	A
9. Prepared By (Resource Unit Leader)			Approved By (Planning Section Chief)		Date	Time
DONNA THOMAS			BRIAN ELDREDGE		05/14/2017	2000

Division/Group Assignment List (ICS 204 WF)

1. Incident Name:			3.			
WEST MIMS			Branch:		Division/Group:	
2. Operational Period: DAY SHIFT 0830-2030			I		D	
Date/Time From: 05/15/2017 0730 MON		Date/Time To: 05/15/2017 1930 MON				
4. Operations Personnel						
PLANNING OPERATIONS CHIEF		STEVE WEAVER BEALE MONDAY (T)		OPERATIONS CHIEF		JIM DURRWACHTER L. SMITH (T); S. BOWMAN; (T)
BRANCH DIRECTOR		DARRELL MILLER		DIVISION/GROUP SUPERVISOR		JOE BURGETTE HEATHER GRIFFIN (T)
SAFETY		BRAD LIDDEL, MICHAEL COOK TONY RIVERS (T)		AIR TACTICAL GROUP SUPERVISOR		CHRIS WORRELL
5. Resources Assigned this Period						
Strike Team / Task Force / Resource Designator		LWD	Leader	Number Persons	Drop Off PT./Time	Pick Up PT./Time
STEQ O-548		05/26	PAUL OLTROGGE	1	ICP/0730	ICP/1930
EMPF E-375 470-532-8807		05/16	GARY FORD	1	ICP/0730	ICP/1930
SOF2 O-541		05/24	LOUIE CASAUS	1	ICP/0730	ICP/1930
6. Control Operations/Work Assignments:						
<p>Purpose: Keep fire South of Suwannee Canal.</p> <p>Task: Coordinate monitoring Billies Island by air with Air Tactical Group Supervisor. Assure structure protection is in place Patrol and mop up within 50' of fire perimeter Respond to any new starts within division Determine and report contained line to Planning Operations Section Chief. DIV F is to obtain situational awareness for their respective division that is currently unstaffed.</p> <p>End State: Confine fire perimeter to reduce threats and minimize damage to private timberlands and resource values at risk.</p>						
7. Special Instructions:						
<p>Ensure LCES is in place before operations begin and stay hydrated. Drive defensively and with lights on at all times. Identify escape routes.</p> <p>Medical Emergency Channel: Command ETA for Ambulance to Scene: Air: 10 mins Ground: 25 mins Approved Helispot: Drop Point 3 Lat: N 30 41.257 Long: W 82 28.833</p>						
8. Division/Group Communication Summary						
Function	Channel	RX Frequency N/W	RX Tone/NAC	TX Frequency N/W	TX Tone/NAC	Mode
COMMAND	2	159.1200N	NONE	151.3700N	100.0	A
AIR TO GROUND	4	169.2000N	NONE	169.2000N	NONE	A
TACTICAL	13	159.4125N	NONE	159.4125N	NONE	A
AIR TO GROUND	14	166.6750N	NONE	166.6750N	NONE	A
AIR TO GROUND	15	169.1500N	NONE	169.1500N	NONE	A
AIR GUARD	16	168.6250N	NONE	168.6250N	110.9	A
9. Prepared By (Resource Unit Leader)			Approved By (Planning Section Chief)		Date	Time
DONNA THOMAS			BRIAN ELDREDGE		05/14/2017	2000

Division/Group Assignment List (ICS 204 WF)

1. Incident Name:			3.			
WEST MIMS			I	D		
2. Operational Period: DAY SHIFT 0830-2030						
Date/Time From: 05/15/2017 0730 MON		Date/Time To: 05/15/2017 1930 MON				
4. Operations Personnel						
PLANNING OPERATIONS CHIEF	STEVE WEAVER BEALE MONDAY (T)		OPERATIONS CHIEF	JIM DURRWACHTER L. SMITH (T); S. BOWMAN; (T)		
BRANCH DIRECTOR	DARRELL MILLER		DIVISION/GROUP SUPERVISOR	JOE BURGETTE HEATHER GRIFFIN (T)		
SAFETY	BRAD LIDDEL, MICHAEL COOK TONY RIVERS (T)		AIR TACTICAL GROUP SUPERVISOR	CHRIS WORRELL		
7. Special Instructions:						
<p>Primary - Ambulance is ground contact with air ambulance Secondary - IWI- IC or approved person will use channel 16 (Air Guard) for ground contact with air ambulance</p>						
8. Division/Group Communication Summary						
Function	Channel	RX Frequency N/W	RX Tone/NAC	TX Frequency N/W	TX Tone/NAC	Mode
COMMAND	2	159.1200N	NONE	151.3700N	100.0	A
AIR TO GROUND	4	169.2000N	NONE	169.2000N	NONE	A
TACTICAL	13	159.4125N	NONE	159.4125N	NONE	A
AIR TO GROUND	14	166.6750N	NONE	166.6750N	NONE	A
AIR TO GROUND	15	169.1500N	NONE	169.1500N	NONE	A
AIR GUARD	16	168.6250N	NONE	168.6250N	110.9	A
9. Prepared By (Resource Unit Leader)			Approved By (Planning Section Chief)		Date	Time
DONNA THOMAS			BRIAN ELDREDGE		05/14/2017	2000

Division/Group Assignment List (ICS 204 WF)

1. Incident Name:			3.			
WEST MIMS			Branch:		Division/Group:	
2. Operational Period: DAY SHIFT 0830-2030			I		E	
Date/Time From: 05/15/2017 0730 MON		Date/Time To: 05/15/2017 1930 MON				
4. Operations Personnel						
PLANNING OPERATIONS CHIEF		STEVE WEAVER BEALE MONDAY (T)		BRANCH DIRECTOR		DARRELL MILLER
DIVISION/GROUP SUPERVISOR		GREG TOLL SHELLY CROOK		AIR TACTICAL GROUP SUPERVISOR		CHRIS WORRELL
OPERATIONS CHIEF		JIM DURRWACHTER L. SMITH (T), S. BOWMAN (T)		SAFETY		BRAD LIDELL, MIKE COOK TONY RIVERS
5. Resources Assigned this Period						
Strike Team / Task Force / Resource Designator		LWD	Leader	Number Persons	Drop Off PT./Time	Pick Up PT./Time
TFLD O-416		05/23	CHAD HYATT	1	ICP/0730	ICP/1930
TPL3 - WILDLANDS FIRE SRVS INC - 75659 E-525		05/24	RONNIE OUIMETTE	2	ICP/0730	ICP/1930
DO22 - TIPTON & YOUNG CONSTRUCTION COMP.INC - E-506		05/23	ETHAN TIPTON	2	ICP/0730	ICP/1930
TPL2 - TIPTON & YOUNG CONSTRUCTION COMP. E-509		05/23			ICP/0730	ICP/1930
DOZ3 - KY-KYS - 311 - 650J E-510		05/24	JERRY BROWN	2	ICP/0730	ICP/1930
KY DOZER - 312 - 650J E-511		05/24	CHRISTOPHER ADAMS	2	ICP/0730	ICP/1930
TPL3 - WILDLANDS FIRE SRVS INC - 83627 E-464		05/21	DAVID PLAGEMANN	2	ICP/0730	ICP/1930
TPL3 - WILDLANDS FIRE SRVS INC - 92622 E-466		05/21	CHADWICK SLAYTON	2	ICP/0730	ICP/1930
ATTACK ONE FIRE E-463		05/21	JEREMIAH CATES	1	ICP/0730	ICP/1930
STEQ O-376		05/22	JAMIE MILLER	1	ICP/0730	ICP/1930
STEQ O-498		05/25	WILLIE HOGGARD	1	ICP/0730	ICP/1930
WT2- BAKER CO. FL - T40 E-477		05/26	KELSEY ANDERSON	2	ICP/0730	ICP/1930
EMPF E-375 470-532-8807		05/24	GARY ALLEN FORD	1	ICP/0730	ICP/1930
SOF2 (T) O-281.59		05/16	CHARLIE PATTERSON (T)	1	ICP/0730	ICP/1930
SOF2 O-586		05/27	PHILLIP YOUNG	1	ICP/0730	ICP/1930
6. Control Operations/Work Assignments:						
8. Division/Group Communication Summary						
Function	Channel	RX Frequency N/W	RX Tone/NAC	TX Frequency N/W	TX Tone/NAC	Mode
COMMAND	2	159.1200N	NONE	151.3700N	100.0	A
AIR TO GROUND	4	169.2000N	NONE	169.2000N	NONE	A
TACTICAL	9	159.2850N	NONE	159.2850N	156.7	A
AIR TO GROUND	14	166.6750N	NONE	166.6750N	NONE	A
AIR TO GROUND	15	169.1500N	NONE	169.1500N	NONE	A
AIR GUARD	16	168.6250N	NONE	168.6250N	110.9	A
9. Prepared By (Resource Unit Leader)			Approved By (Planning Section Chief)		Date	Time
DONNA THOMAS			BRIAN ELDREDGE		05/14/2017	2000

Division/Group Assignment List (ICS 204 WF)

1. Incident Name:			3.			
WEST MIMS			Branch:		Division/Group:	
2. Operational Period:			I E			
DAY SHIFT 0830-2030						
Date/Time From: 05/15/2017 0730 MON		Date/Time To: 05/15/2017 1930 MON				
4. Operations Personnel						
PLANNING OPERATIONS CHIEF		STEVE WEAVER BEALE MONDAY (T)		BRANCH DIRECTOR		DARRELL MILLER
DIVISION/GROUP SUPERVISOR		GREG TOLL SHELLY CROOK		AIR TACTICAL GROUP SUPERVISOR		CHRIS WORRELL
OPERATIONS CHIEF		JIM DURRWACHTER L. SMITH (T), S. BOWMAN (T)		SAFETY		BRAD LIDELL, MIKE COOK TONY RIVERS
6. Control Operations/Work Assignments:						
Purpose: Keep fire East of Swamp Edge Break.						
Task: Coordinate monitoring with Div D of the "pocket" area and Billies Island by air with Air Tactical Group Supervisor. Assess protection needs of isolated structures. Respond to any new starts within Division as requested. Coordinate with private landowners for contingency and preventative control work. Assure swamps edge break is refreshed to mineral soil. DIV F is to obtain situational awareness for divisions that is currently unstaffed.						
End State: Swamps edge break is prepared and contingency control lines are established to reduce threats and minimize damage and resource values at risk to private timberlands.						
7. Special Instructions:						
8. Division/Group Communication Summary						
Function	Channel	RX Frequency N/W	RX Tone/NAC	TX Frequency N/W	TX Tone/NAC	Mode
COMMAND	2	159.1200N	NONE	151.3700N	100.0	A
AIR TO GROUND	4	169.2000N	NONE	169.2000N	NONE	A
TACTICAL	9	159.2850N	NONE	159.2850N	156.7	A
AIR TO GROUND	14	166.6750N	NONE	166.6750N	NONE	A
AIR TO GROUND	15	169.1500N	NONE	169.1500N	NONE	A
AIR GUARD	16	168.6250N	NONE	168.6250N	110.9	A
9. Prepared By (Resource Unit Leader)			Approved By (Planning Section Chief)		Date	Time
DONNA THOMAS			BRIAN ELDREDGE		05/14/2017	2000

Division/Group Assignment List (ICS 204 WF)

1. Incident Name:			3.						
WEST MIMS			I	Branch:		Division/Group:			
2. Operational Period: DAY SHIFT 0830-2030				FL FFS CONTINGENCY					
Date/Time From: 05/15/2017 0730 MON	Date/Time To: 05/15/2017 1930 MON								
4. Operations Personnel									
PLANNING OPERATIONS CHIEF		STEVE WEAVER BEALE MONDAY (T)		OPERATIONS CHIEF		JIM DURRWACHTER L. SMITH (T), S. BOWMAN (T)			
BRANCH DIRECTOR		DARRELL MILLER		DIVISION/GROUP SUPERVISOR		GLENN DAVIS JOHN RAULERSON			
SAFETY		BRAD LIDELL; MIKE COOK TONY RIVERS (T)		AIR TACTICAL GROUP SUPERVISOR		CHRIS WORRELL			
5. Resources Assigned this Period									
Strike Team / Task Force / Resource Designator		LWD	Leader	Number Persons	Drop Off PT./Time	Pick Up PT./Time			
STDZ			ANDY LAMBORN	1	EAST CAMP /0730	EAST CAMP /1930			
TPL2 JOHN BETHEA				1	EAST CAMP /0730	EAST CAMP /1930			
TPL2				1	EAST CAMP /0730	EAST CAMP /1930			
DOZ2				1	EAST CAMP /0730	EAST CAMP /1930			
DOZ2				1	EAST CAMP /0730	EAST CAMP /1930			
DOZ2				1	EAST CAMP /0730	EAST CAMP /1930			
DOZ1				1	EAST CAMP /0730	EAST CAMP /1930			
TPL CALHOUN 61		05/21	WHITE		EAST CAMP /0730	EAST CAMP /1930			
TPL DOOLY 62		05/21	HOLCUMB		EAST CAMP /0730	EAST CAMP /1930			
TPL HOUSTON 61		05/21	SIDLE		EAST CAMP /0730	EAST CAMP /1930			
ENG6				2	EAST CAMP /0730	EAST CAMP /1930			
STEQ		05/21	MARTY FORE		EAST CAMP /0730	EAST CAMP /1930			
6. Control Operations/Work Assignments:									
<p>Purpose: To provide suppression support for incident.</p> <p>Task: Resources are staged at John Bethea State Forest headquarters. Resources are ready upon calling for IA or extended attack.</p> <p>End State: Ready support resources to respond to protect structures, timberland and resource values at risk.</p>									
8. Division/Group Communication Summary									
Function	Channel	RX Frequency N/W	RX Tone/NAC	TX Frequency N/W	TX Tone/NAC	Mode			
COMMAND	2	159.1200N	NONE	151.3700N	100.0	A			
AIR TO GROUND	4	169.2000N	NONE	169.2000N	NONE	A			
TACTICAL	6	159.3900N	NONE	159.3900N	156.7	A			
AIR TO GROUND	14	166.6750N	NONE	166.6750N	NONE	A			
AIR TO GROUND	15	169.1500N	NONE	169.1500N	NONE	A			
AIR GUARD	16	168.6250N	NONE	168.6250N	110.9	A			
9. Prepared By (Resource Unit Leader)			Approved By (Planning Section Chief)			Date		Time	
DONNA THOMAS			BRIAN ELDREDGE			05/14/2017		2000	

Division/Group Assignment List (ICS 204 WF)

1. Incident Name:			3.			
WEST MIMS			I	Branch:		Division/Group:
2. Operational Period: DAY SHIFT 0830-2030						FL FFS CONTINGENCY
Date/Time From: 05/15/2017 0730 MON		Date/Time To: 05/15/2017 1930 MON				
4. Operations Personnel						
PLANNING OPERATIONS CHIEF		STEVE WEAVER BEALE MONDAY (T)		OPERATIONS CHIEF		JIM DURRWACHTER L. SMITH (T), S. BOWMAN (T)
BRANCH DIRECTOR		DARRELL MILLER		DIVISION/GROUP SUPERVISOR		GLENN DAVIS JOHN RAULERSON
SAFETY		BRAD LIDELL; MIKE COOK TONY RIVERS (T)		AIR TACTICAL GROUP SUPERVISOR		CHRIS WORRELL
6. Control Operations/Work Assignments:						
7. Special Instructions:						
<p>Ensure LCES are in place before operations begin. Drive defensively and with lights on at all times. Assure common communication per IAP Commo Plan is established before engagement.</p> <p>Contact Rick Dolan, FL FSS Unified IC 352-222-4420 when activating contingency resources.</p> <p>STEQ (Gregory) with 3 Type 4 Tractor Plows.</p>						
8. Division/Group Communication Summary						
Function	Channel	RX Frequency N/W	RX Tone/NAC	TX Frequency N/W	TX Tone/NAC	Mode
COMMAND	2	159.1200N	NONE	151.3700N	100.0	A
AIR TO GROUND	4	169.2000N	NONE	169.2000N	NONE	A
TACTICAL	6	159.3900N	NONE	159.3900N	156.7	A
AIR TO GROUND	14	166.6750N	NONE	166.6750N	NONE	A
AIR TO GROUND	15	169.1500N	NONE	169.1500N	NONE	A
AIR GUARD	16	168.6250N	NONE	168.6250N	110.9	A
9. Prepared By (Resource Unit Leader)			Approved By (Planning Section Chief)		Date	Time
DONNA THOMAS			BRIAN ELDREDGE		05/14/2017	2000

Division/Group Assignment List (ICS 204 WF)

1. Incident Name:			3.				
WEST MIMS			I	Branch:		Division/Group:	
2. Operational Period: DAY SHIFT 0830-2030				I		WEST ROAD MAINTENANCE	
Date/Time From: 05/15/2017 0730	MON	Date/Time To: 05/15/2017 1930	MON				
4. Operations Personnel							
OPERATIONS CHIEF		JIM DURRWACHTER L. SMITH (T), S. BOWMAN (T)		THSP ROADS			
BRANCH DIRECTOR				DIVISION/GROUP SUPERVISOR		ROB DAVIS	
AIR TACTICAL GROUP SUPERVISOR		CHRIS WORRELL		SAFETY		BRAD LIDELL, MIKE COOK TONY RIVERS (T)	
5. Resources Assigned this Period							
Strike Team / Task Force / Resource Designator		LWD	Leader	Number Persons	Drop Off PT./Time	Pick Up PT./Time	
GRADER - R.O.T. RANCH CONSTRUCTION E-234		05/20	ROBBY WORRELL	1	EAST CAMP/0730	EAST CAMP/1930	
TFLD - O-308		05/16	CHARLES DAVIS	1	EAST CAMP/0730	EAST CAMP/1930	
GRADER - WILDLANDS FIRE SERVICE INC - 6198TE E-136		05/22	CARSON SWEENEY	1	EAST CAMP/0730	EAST CAMP/1930	
ROAD GRADER - T1 - TIPTON & YOUNG CONSTRUCTION COMPANY E-419		05/20	MAC EVANS	1	EAST CAMP/0730	EAST CAMP/1930	
HEQB O-290		05/16	WES VANDENABEELE	1	EAST CAMP/0730	EAST CAMP/1930	
HEQB O-355		05/21	RON ROCKIS	1	EAST CAMP/0730	EAST CAMP/1930	
HEQB O-547		05/27	RODNEY G HELZER	1	EAST CAMP/0730	EAST CAMP/1930	
HEQB O-509		05/27	CANDICE KUTROSKY	1	EAST CAMP/0730	EAST CAMP/1930	
6. Control Operations/Work Assignments:							
<p>Purpose: To keep roads accessible for access to fire perimeter.</p> <p>Task: Assess single lane bridges and culverts for safety and maintenance needs. Provide adequate signage for traffic safety. All DIVS to assess Rd maintenance needs for OSC prioritization. OSC to give list of priority road needs to road maintenance leader / boss/.</p> <p>End State: Access Roads are in a safe, travel worthy condition for suppression activities, and coordinated with private landowners as appropriate.</p>							
7. Special Instructions:							
Check in and out with Division Supervisor when moving between divisions.							
8. Division/Group Communication Summary							
Function	Channel	RX Frequency N/W	RX Tone/NAC	TX Frequency N/W	TX Tone/NAC	Mode	
COMMAND	2	159.1200N	NONE	151.3700N	100.0	A	
AIR TO GROUND	4	169.2000N	NONE	169.2000N	NONE	A	
TACTICAL	6	159.3900N	NONE	159.3900N	156.7	A	
9. Prepared By (Resource Unit Leader)			Approved By (Planning Section Chief)		Date	Time	
DONNA THOMAS			BRIAN ELDREDGE		05/14/2017	2000	

Division/Group Assignment List (ICS 204 WF)

1. Incident Name:			3.			
WEST MIMS			III		INITIAL ATTACK	
2. Operational Period: DAY SHIFT 0830-2030						
Date/Time From: 05/15/2017 0730 MON		Date/Time To: 05/15/2017 1930 MON				
4. Operations Personnel						
PLANNING OPERATIONS CHIEF		STEVE WEAVER, BEALE MONDAY (T) DAVE WALKER, MIKE DAVIS (T)		OPERATIONS CHIEF		JIM DURRWACHTER L. SMITH(T), S. BOWMAN (T)
BRANCH DIRECTOR		RON SMITH		DIVISION/GROUP SUPERVISOR		GREGG BUCKALEW
SAFETY		LARRY CONNELL		AIR TACTICAL GROUP SUPERVISOR		CHRIS WORRELL
5. Resources Assigned this Period						
Strike Team / Task Force / Resource Designator		LWD	Leader	Number Persons	Drop Off PT./Time	Pick Up PT./Time
ICT4			CORY BRYANT	1	EAST CAMP/0730	EAST CAMP/1930
TFLD O-205		05/16	ADAM MCCULLOUGH	1	EAST CAMP/0730	EAST CAMP/1930
DO22 OKE-54 E-34 IA			F. PRIVETT	1	EAST CAMP/0730	EAST CAMP/1930
OKE 56 - TPL E-35 IA			WES ALLIE	1	EAST CAMP/0730	EAST CAMP/1930
ENGINE - T6 - OK-4261 E-36 IA		05/22	B. HORNSBY	2	EAST CAMP/0730	EAST CAMP/1930
SC-CSR - TPL 223 E-240 CONT			UNSTAFFED	1	EAST CAMP/0730	EAST CAMP/1930
NC PXI - TPL E-131 CONT		05/15	J. SWAIN	1	EAST CAMP/0730	EAST CAMP/1930
ENGINE - T6 - SC-CRR-E262 E-237 IA		05/21	ROBERT ASKINS	2	EAST CAMP/0730	EAST CAMP/1930
DO22 - GA-SAR-922 IA E-122		05/21	C. JOHNSON	1	EAST CAMP/0730	EAST CAMP/1930
SOF2 O-539		05/27	PAUL E BOUCHER	1	EAST CAMP/0730	EAST CAMP/1930
6. Control Operations/Work Assignments:						
8. Division/Group Communication Summary						
Function	Channel	RX Frequency N/W	RX Tone/NAC	TX Frequency N/W	TX Tone/NAC	Mode
COMMAND	3	159.1200N	NONE	151.3700N	82.5	A
AIR TO GROUND	4	169.2000N	NONE	169.2000N	NONE	A
TACTICAL	12	159.4425N	NONE	159.4425N	NONE	A
AIR TO GROUND	14	166.6750N	NONE	166.6750N	NONE	A
AIR TO GROUND	15	169.1500N	NONE	169.1500N	NONE	A
AIR GUARD	16	168.6250N	NONE	168.6250N	110.9	A
9. Prepared By (Resource Unit Leader)			Approved By (Planning Section Chief)		Date	Time
TIFFANY PATE			BRIAN ELDREDGE		05/14/2017	2000

Division/Group Assignment List (ICS 204 WF)

1. Incident Name:			3.			
WEST MIMS			III	Division/Group: INITIAL ATTACK		
2. Operational Period: DAY SHIFT 0830-2030						
Date/Time From: 05/15/2017 0730	MON	Date/Time To: 05/15/2017 1930	MON			
4. Operations Personnel						
PLANNING OPERATIONS CHIEF	STEVE WEAVER, BEALE MONDAY (T) DAVE WALKER, MIKE DAVIS (T)		OPERATIONS CHIEF	JIM DURRWACHTER L. SMITH(T), S. BOWMAN (T)		
BRANCH DIRECTOR	RON SMITH		DIVISION/GROUP SUPERVISOR	GREGG BUCKALEW		
SAFETY	LARRY CONNELL		AIR TACTICAL GROUP SUPERVISOR	CHRIS WORRELL		
6. Control Operations/Work Assignments:						
<p>Purpose: Establish communication with OKR/GA and FL State. Ensure timely response on any IA within OKR jurisdictional boundaries and vicinity. Assist as approved by Agency Administrators and Unified Incident Commanders.</p> <p>Task: Coordinate with OKR duty officer for notification of reported new ignitions. Coordinate initial attack action with assigned aviation and/or ground assets. Determine IA resource repositioning across OKR. Establish common communication per IAP before engagement.</p> <p>End State: Protect human life Minimize damage to public and private property Minimize environmental damage to protect threatened species.</p>						
7. Special Instructions:						
<p>Contact Resource Advisors for any cultural or archeological needs, as well as, RCW concerns. Ensure LCES is in place before operations begin & stay hydrated. Drive defensively and with lights on at all times. Communications: Use the tactical channel for the division you are in. Staging on east side at Refuge office.</p>						
8. Division/Group Communication Summary						
Function	Channel	RX Frequency N/W	RX Tone/NAC	TX Frequency N/W	TX Tone/NAC	Mode
COMMAND	3	159.1200N	NONE	151.3700N	82.5	A
AIR TO GROUND	4	169.2000N	NONE	169.2000N	NONE	A
TACTICAL	12	159.4425N	NONE	159.4425N	NONE	A
AIR TO GROUND	14	166.6750N	NONE	166.6750N	NONE	A
AIR TO GROUND	15	169.1500N	NONE	169.1500N	NONE	A
AIR GUARD	16	168.6250N	NONE	168.6250N	110.9	A
9. Prepared By (Resource Unit Leader)			Approved By (Planning Section Chief)		Date	Time
TIFFANY PATE			BRIAN ELDREDGE		05/14/2017	2000

Division/Group Assignment List (ICS 204 WF)

1. Incident Name:				3.			
WEST MIMS				III		M/N	
2. Operational Period: DAY SHIFT 0830-2030							
Date/Time From: 05/15/2017 0730 MON		Date/Time To: 05/15/2017 1930 MON					
4. Operations Personnel							
PLANNING OPERATIONS CHIEF		STEVE WEAVER, BEALE MONDAY (T) DAVE WALKER, MIKE DAVIS (T)		OPERATIONS CHIEF		JIM DURRWACHTER L. SMITH (T), S. BOWMAN (T)	
BRANCH DIRECTOR		RON SMITH		DIVISION/GROUP SUPERVISOR		BRIAN BROWNING, JASON LAGO (T) SAM MCFARLAND, SUNBEAR VIERRA	
SAFETY		LARRY CONNELL		AIR TACTICAL GROUP SUPERVISOR		CHRIS WORRELL	
5. Resources Assigned this Period							
Strike Team / Task Force / Resource Designator		LWD	Leader	Number Persons	Drop Off PT./Time	Pick Up PT./Time	
WT2 WET 'N RED, LLC - 58592 E-365		05/23	ALLEN WEST	2	EAST CAMP/0730	EAST CAMP/1930	
ENG6 - ATTACK ONE FIRE MGMT SERV E-257		05/28	STEVE HELM	2	EAST CAMP/0730	EAST CAMP/1930	
ENG6 - SCHOLL FIRE & FUELS MGMT. E-263		05/19	BEN HAYS	3	EAST CAMP/0730	EAST CAMP/1930	
ENG6 - AR-OZF - SYL - E-671 E-283		05/24	LARRY VANDIVER	3	EAST CAMP/0730	EAST CAMP/1930	
ENG6 - E-641 - LEE E-655		05/26	LINDSEY CURTIN	3	EAST CAMP/0730	EAST CAMP/1930	
ENG6 - MBF - ENGINE 694 E-776		05/20	JAELE CONSTANTINO	3	EAST CAMP/0730	EAST CAMP/1930	
ENG6 - VIN# C35321 E-723		05/27	JESSE SCHMIDT	3	EAST CAMP/0730	EAST CAMP/1930	
TFLD O-385		05/23	MARVIN ROYBAL	1	EAST CAMP/0730	EAST CAMP/1930	
TFLD O-591		05/28	CLAYTON SWANGER	1	EAST CAMP/0730	EAST CAMP/1930	
TPL4 - MSR2 E-594		05/20	JAMES BATES	1	EAST CAMP/0730	EAST CAMP/1930	
STEQ O-512		05/25	JASON HARRIS	1	EAST CAMP/0730	EAST CAMP/1930	
TPL2 E-666		05/25	STEVEN JOHNSON	2	EAST CAMP/0730	EAST CAMP/1930	
TPL2 E-665		05/25	ERIC SMITH	2	EAST CAMP/0730	EAST CAMP/1930	
TPL2 E-667		05/25	DAVIS STEEDLEY	2	EAST CAMP/0730	EAST CAMP/1930	
8. Division/Group Communication Summary							
Function	Channel	RX Frequency N/W	RX Tone/NAC	TX Frequency N/W	TX Tone/NAC	Mode	
COMMAND	3	159.1200N	NONE	151.3700N	82.5	A	
AIR TO GROUND	4	169.2000N	NONE	169.2000N	NONE	A	
TACTICAL	10	168.3500N	NONE	168.3500N	NONE	A	
AIR TO GROUND	14	166.6750N	NONE	166.6750N	NONE	A	
AIR TO GROUND	15	169.1500N	NONE	169.1500N	NONE	A	
AIR GUARD	16	168.6250N	NONE	168.6250N	110.9	A	
9. Prepared By (Resource Unit Leader)			Approved By (Planning Section Chief)			Date	Time
TIFFANY PATE			BRIAN ELDREDGE			05/14/2017	2000

Division/Group Assignment List (ICS 204 WF)

1. Incident Name:			3.			
WEST MIMS			Branch:		Division/Group:	
2. Operational Period: DAY SHIFT 0830-2030			III		M/N	
Date/Time From: 05/15/2017 0730 MON		Date/Time To: 05/15/2017 1930 MON				
4. Operations Personnel						
PLANNING OPERATIONS CHIEF		STEVE WEAVER, BEALE MONDAY (T) DAVE WALKER, MIKE DAVIS (T)		OPERATIONS CHIEF		JIM DURRWACHTER L. SMITH (T), S. BOWMAN (T)
BRANCH DIRECTOR		RON SMITH		DIVISION/GROUP SUPERVISOR		BRIAN BROWNING, JASON LAGO (T) SAM MCFARLAND, SUNBEAR VIERRA
SAFETY		LARRY CONNELL		AIR TACTICAL GROUP SUPERVISOR		CHRIS WORRELL
5. Resources Assigned this Period						
Strike Team / Task Force / Resource Designator		LWD	Leader	Number Persons	Drop Off PT./Time	Pick Up PT./Time
HEQB O-510		05/24	KEVIN J DITMANSON	1	EAST CAMP/0730	EAST CAMP/1930
TPL4 TX FOREST SERVICE E-471		05/24	TIM GILL	2	EAST CAMP/0730	EAST CAMP/1930
TPL4 - UNIT #8191 - HUNTSVILLE E-570		05/24	CROCKETT PEGODA	2	EAST CAMP/0730	EAST CAMP/1930
TPL4 - UNIT #7292 - JACKSONVILLE E-571		05/25	JACOB CROWLEY		EAST CAMP/0730	EAST CAMP/1930
TPL4 - UNIT #6192 - NEW BOSTON E-467		05/25	LEE ANDERSON	2	EAST CAMP/0730	EAST CAMP/1930
HEQB O-572		05/27	BERT SMITH	1	EAST CAMP/0730	EAST CAMP/1930
WT2 - AZCOF - WT-4-74 E-600		05/26	TRAVIS BEDLION	2	EAST CAMP/0730	EAST CAMP/1930
ENG6 - OH-OHS E-62 E-761		05/28	TOM SHUMAN	3		
HEQB O-601		05/28	JASON B FOREMAN	1		
EMPF O-174 616-403-1873			LINDA KRAMER	1	EAST CAMP/0730	EAST CAMP/1930
EMPF O-560 928-235-7059		05/25	LIONEL VAN GURP	1	EAST CAMP/0730	EAST CAMP/1930
SOF2 O-493		05/26	JAYMES SMITH	1	EAST CAMP/0730	EAST CAMP/1930
SKIDGINE - T4 - MS-MSR-E611 E-652		05/28	MICHAEL SEAL	2		
6. Control Operations/Work Assignments:						
Purpose: Keep fire West of Swamp edge break and South of Suwannee Canal in DIV M and South of Crawford Rd in DIV N.						
Task: Patrol and mop up within 50 ft of fire perimeter.						
8. Division/Group Communication Summary						
Function	Channel	RX Frequency N/W	RX Tone/NAC	TX Frequency N/W	TX Tone/NAC	Mode
COMMAND	3	159.1200N	NONE	151.3700N	82.5	A
AIR TO GROUND	4	169.2000N	NONE	169.2000N	NONE	A
TACTICAL	10	168.3500N	NONE	168.3500N	NONE	A
AIR TO GROUND	14	166.6750N	NONE	166.6750N	NONE	A
AIR TO GROUND	15	169.1500N	NONE	169.1500N	NONE	A
AIR GUARD	16	168.6250N	NONE	168.6250N	110.9	A
9. Prepared By (Resource Unit Leader)			Approved By (Planning Section Chief)		Date	Time
TIFFANY PATE			BRIAN ELDREDGE		05/14/2017	2000

Division/Group Assignment List (ICS 204 WF)

1. Incident Name:			3.			
WEST MIMS			III	Division/Group: M/N		
2. Operational Period: DAY SHIFT 0830-2030						
Date/Time From:	MON	Date/Time To:	MON			
05/15/2017 0730		05/15/2017 1930				
4. Operations Personnel						
PLANNING OPERATIONS CHIEF		STEVE WEAVER, BEALE MONDAY (T) DAVE WALKER, MIKE DAVIS (T)		OPERATIONS CHIEF		JIM DURRWACHTER L. SMITH (T), S. BOWMAN (T)
BRANCH DIRECTOR		RON SMITH		DIVISION/GROUP SUPERVISOR		BRIAN BROWNING, JASON LAGO (T) SAM MCFARLAND, SUNBEAR VIERRA
SAFETY		LARRY CONNELL		AIR TACTICAL GROUP SUPERVISOR		CHRIS WORRELL
6. Control Operations/Work Assignments:						
<p>Respond to any new starts within Div. Prep for strategic firing of control lines. Determine and report contained line to Planning OSC1. DIV L and DIV K are to obtain situational awareness for their respective divisions that are currently unstaffed.</p> <p>End State: Confine fire perimeter to reduce threats and minimize damage to private timberlands and resources values at risk.</p>						
7. Special Instructions:						
<p>Ensure LCES is in place before operations begin and stay hydrated. Drive defensively and with lights on at all times. Identify escape routes.</p> <p>Medical Emergency Channel: Command ETA for Ambulance to Scene: Air: 7 mins Ground: 15 mins Approved Helispot: POGO Helibase Lat: N 30 44.26 Long: W 82 07.69 Primary - Ambulance is ground contact with air ambulance Secondary - IWI- IC or approved person will use channel 16 (Air Guard) for ground contact with air ambulance</p>						
8. Division/Group Communication Summary						
Function	Channel	RX Frequency N/W	RX Tone/NAC	TX Frequency N/W	TX Tone/NAC	Mode
COMMAND	3	159.1200N	NONE	151.3700N	82.5	A
AIR TO GROUND	4	169.2000N	NONE	169.2000N	NONE	A
TACTICAL	10	168.3500N	NONE	168.3500N	NONE	A
AIR TO GROUND	14	166.6750N	NONE	166.6750N	NONE	A
AIR TO GROUND	15	169.1500N	NONE	169.1500N	NONE	A
AIR GUARD	16	168.6250N	NONE	168.6250N	110.9	A
9. Prepared By (Resource Unit Leader)			Approved By (Planning Section Chief)		Date	Time
TIFFANY PATE			BRIAN ELDREDGE		05/14/2017	2000

Division/Group Assignment List (ICS 204 WF)

1. Incident Name:				3.					
WEST MIMS				III		O			
2. Operational Period: DAY SHIFT 0830-2030									
Date/Time From: 05/15/2017 0730 MON		Date/Time To: 05/15/2017 1930 MON							
4. Operations Personnel									
PLANNING OPERATIONS CHIEF		STEVE WEAVER, BEALE MONDAY (T) DAVE WALKER, MIKE DAVIS (T)		OPERATIONS CHIEF		JIM DURRWACHTER L. SMITH (T), S. BOWMAN (T)			
BRANCH DIRECTOR		RON SMITH		DIVISION/GROUP SUPERVISOR		ROBERT THORP BRANDON HUGHES (T)			
SAFETY		LARRY CONNELL		AIR TACTICAL GROUP SUPERVISOR		CHRIS WORRELL			
5. Resources Assigned this Period									
Strike Team / Task Force / Resource Designator		LWD	Leader	Number Persons	Drop Off PT./Time	Pick Up PT./Time			
TFLD O-260		05/18	CODY HOLLOWAY	1	EAST CAMP/0730	EAST CAMP/1930			
ENG6 - UNIT #9060 - AMARILLO E-119		05/18	RANDALL FUCHS	3	EAST CAMP/0730	EAST CAMP/1930			
ENG3 - UNIT #9830 - LUBBOCK TF8 E-121		05/17	JEFF WEBB	5	EAST CAMP/0730	EAST CAMP/1930			
TPL5 - UNIT #9892 - WOLFFORTH TF8 E-123		05/18	NATHAN SMITH	2	EAST CAMP/0730	EAST CAMP/1930			
TPL5 - UNIT #9693 - SMITHVILLE E-124		05/18	MIKE ADAMS	2	EAST CAMP/0730	EAST CAMP/1930			
ENG6 - FWS - 462 E-261		05/21	REBECCA GOOSMAN	3	EAST CAMP/0730	EAST CAMP/1930			
TFLD O-274 325-276-1713		05/17	SHANE CRIMM	1	EAST CAMP/0730	EAST CAMP/1930			
ENG6 - UNIT #9360 - MCGREGOR TF3 E-120		05/17	JASON MYERS	3	EAST CAMP/0730	EAST CAMP/1930			
ENG3 - UNIT #9530 - FT STOCKTON TF5 E-122		05/17	JARED BURCHETT	5	EAST CAMP/0730	EAST CAMP/1930			
ENG6 - 151 TEXAS FIRE RESOURCES E-260		05/19	LARRY WEAVER	3	EAST CAMP/0730	EAST CAMP/1930			
ENG6 - 161 E-656		05/27	JEFFERY BENNETT	3	EAST CAMP/0730	EAST CAMP/1930			
TPL4 - UNIT #8394 - JASPER E-125		05/17	JOSH MIZRANY	2	EAST CAMP/0730	EAST CAMP/1930			
TPL5 - UNIT #8591 - WOODVILLE E-126		05/17	CHARLES CORLEY	2	EAST CAMP/0730	EAST CAMP/1930			
8. Division/Group Communication Summary									
Function	Channel	RX Frequency N/W	RX Tone/NAC	TX Frequency N/W	TX Tone/NAC	Mode			
COMMAND	3	159.1200N	NONE	151.3700N	82.5	A			
AIR TO GROUND	4	169.2000N	NONE	169.2000N	NONE	A			
TACTICAL	11	163.7125N	NONE	163.7125N	NONE	A			
AIR TO GROUND	14	166.6750N	NONE	166.6750N	NONE	A			
AIR TO GROUND	15	169.1500N	NONE	169.1500N	NONE	A			
AIR GUARD	16	168.6250N	NONE	168.6250N	110.9	A			
9. Prepared By (Resource Unit Leader)			Approved By (Planning Section Chief)			Date		Time	
TIFFANY PATE			BRIAN ELDREDGE			05/14/2017		2000	

Division/Group Assignment List (ICS 204 WF)

1. Incident Name:				3.					
WEST MIMS				III		O			
2. Operational Period: DAY SHIFT 0830-2030									
Date/Time From: 05/15/2017 0730 MON		Date/Time To: 05/15/2017 1930 MON							
4. Operations Personnel									
PLANNING OPERATIONS CHIEF		STEVE WEAVER, BEALE MONDAY (T) DAVE WALKER, MIKE DAVIS (T)		OPERATIONS CHIEF		JIM DURRWACHTER L. SMITH (T), S. BOWMAN (T)			
BRANCH DIRECTOR		RON SMITH		DIVISION/GROUP SUPERVISOR		ROBERT THORP BRANDON HUGHES (T)			
SAFETY		LARRY CONNELL		AIR TACTICAL GROUP SUPERVISOR		CHRIS WORRELL			
5. Resources Assigned this Period									
Strike Team / Task Force / Resource Designator		LWD	Leader	Number Persons	Drop Off PT./Time	Pick Up PT./Time			
STEQ O-371		05/19	MICHAEL HENDERSON	1	EAST CAMP/0730	EAST CAMP/1930			
TPL3 - GFC3266 E-370		05/20	KEVIN ANDERSON	1	EAST CAMP/0730	EAST CAMP/1930			
TPL2 - GFC3307 E-371		05/29	BENJI ANDERSON	1	EAST CAMP/0730	EAST CAMP/1930			
TPL2 - GFC3295 E-372		05/19	SAMUEL LITTLE	1	EAST CAMP/0730	EAST CAMP/1930			
WT2 - BONNELL SAND & GRAVEL I E-366		05/22	JOE BONNELL	1	EAST CAMP/0730	EAST CAMP/1930			
MODULE - SUPPRESSION - BIA SUPPRESSION MODULE #2 O-522		05/25	SCOTTY KOPEPAWSSAH	12	EAST CAMP/0730	EAST CAMP/1930			
CREW - T2IA - NMCIF - ACOMA #1 C-12		05/24	ANDREW M HENRY	21	EAST CAMP/0730	EAST CAMP/1930			
EMPF W/UTV O-346 229--561-4224		05/20	DEAN CARPENTER	1	EAST CAMP/0730	EAST CAMP/1930			
HEQB O-573		05/26	OLIVER M WAHLQUIST	1	EAST CAMP/0730	EAST CAMP/1930			
SOF2 O-493		05/26	JAMES SMITH	1	EAST CAMP/0730	EAST CAMP/1930			
ENG6 - 2661 - BRAZORIA REFUGE E-657		05/28	DAVID SIGAFOOSE	2	EAST CAMP/0730	EAST CAMP/1930			
8. Division/Group Communication Summary									
Function	Channel	RX Frequency N/W	RX Tone/NAC	TX Frequency N/W	TX Tone/NAC	Mode			
COMMAND	3	159.1200N	NONE	151.3700N	82.5	A			
AIR TO GROUND	4	169.2000N	NONE	169.2000N	NONE	A			
TACTICAL	11	163.7125N	NONE	163.7125N	NONE	A			
AIR TO GROUND	14	166.6750N	NONE	166.6750N	NONE	A			
AIR TO GROUND	15	169.1500N	NONE	169.1500N	NONE	A			
AIR GUARD	16	168.6250N	NONE	168.6250N	110.9	A			
9. Prepared By (Resource Unit Leader)			Approved By (Planning Section Chief)			Date		Time	
TIFFANY PATE			BRIAN ELDREDGE			05/14/2017		2000	

Division/Group Assignment List (ICS 204 WF)

1. Incident Name:			3.				
WEST MIMS			III		O		
2. Operational Period: DAY SHIFT 0830-2030							
Date/Time From: 05/15/2017 0730 MON		Date/Time To: 05/15/2017 1930 MON					
4. Operations Personnel							
PLANNING OPERATIONS CHIEF		STEVE WEAVER, BEALE MONDAY (T) DAVE WALKER, MIKE DAVIS (T)		OPERATIONS CHIEF		JIM DURRWACHTER L. SMITH (T), S. BOWMAN (T)	
BRANCH DIRECTOR		RON SMITH		DIVISION/GROUP SUPERVISOR		ROBERT THORP BRANDON HUGHES (T)	
SAFETY		LARRY CONNELL		AIR TACTICAL GROUP SUPERVISOR		CHRIS WORRELL	
6. Control Operations/Work Assignments:							
<p>Task: Anchor suppression work at fire perimeter in O. Prep lines and coordinate strategic firing with Unified IC's, as appropriate. Coordinate with Structure Protection group supervisor on triage of structures for point protection. Continue dozer line construction as appropriate to establish or strengthen containment lines.</p> <p>Purpose: To keep fire confined and contained. Keep fire West of St Mary's River. To protect outlying structures.</p> <p>End State: Contain fire perimeter within boundaries of DIV O. Protect City of St. George residents and private property. Minimize damage to both public and private infrastructure. Protect resource values at risk.</p>							
7. Special Instructions:							
<p>Ensure LCES are in place before operations begin and stay hydrated. Drive defensively and with lights on at all times. Identify escape routes.</p> <p>Medical Emergency Channel: Command ETA for Ambulance to Scene: Air: 10 mins Ground: 15 mins Approved Helispot: POGO Helibase Lat: N 30 44.26 Long: W 82 07.69</p> <p>Primary - Ambulance is ground contact with air ambulance Secondary - IWI- IC or approved person will use channel 16 (Air Guard) for ground contact with air ambulance</p>							
8. Division/Group Communication Summary							
Function		Channel	RX Frequency N/W	RX Tone/NAC	TX Frequency N/W	TX Tone/NAC	Mode
COMMAND		3	159.1200N	NONE	151.3700N	82.5	A
AIR TO GROUND		4	169.2000N	NONE	169.2000N	NONE	A
TACTICAL		11	163.7125N	NONE	163.7125N	NONE	A
AIR TO GROUND		14	166.6750N	NONE	166.6750N	NONE	A
AIR TO GROUND		15	169.1500N	NONE	169.1500N	NONE	A
AIR GUARD		16	168.6250N	NONE	168.6250N	110.9	A
9. Prepared By (Resource Unit Leader)			Approved By (Planning Section Chief)			Date	Time
TIFFANY PATE			BRIAN ELDREDGE			05/14/2017	2000

Division/Group Assignment List (ICS 204 WF)

1. Incident Name:			3.			
WEST MIMS			IV		A	
2. Operational Period: DAY SHIFT 0830-2030						
Date/Time From: 05/15/2017 0730 MON		Date/Time To: 05/15/2017 1930 MON				
4. Operations Personnel						
PLANNING OPERATIONS CHIEF		STEVE WEAVER, BEALE MONDAY (T) DAVE WALKER, MIKE DAVIS (T)		OPERATIONS CHIEF		JIM DURRWACHTER L. SMITH (T), S. BOWMAN (T)
BRANCH DIRECTOR		RON SMITH		DIVISION/GROUP SUPERVISOR		JAMES ROURKS
SAFETY		LARRY CONNELL		AIR TACTICAL GROUP SUPERVISOR		CHRIS WORRELL
5. Resources Assigned this Period						
Strike Team / Task Force / Resource Designator		LWD	Leader	Number Persons	Drop Off PT./Time	Pick Up PT./Time
TFLD O-358		05/22	HANS RUDOLF	1	EAST CAMP/0730	EAST CAMP/1930
MODULE O-311		05/17	RONALD ESQUIBEL	10	EAST CAMP/0730	EAST CAMP/1930
ENG3 - WEST METRO - BRUSH 39 E-277		05/21	BRADLEY NELSON	4	EAST CAMP/0730	EAST CAMP/1930
ENG3 - DEER MOUNTAIN FPD - ENGINE 12 E-280		06/05	JOSEPH CRAIG WATTS	3	EAST CAMP/0730	EAST CAMP/1930
ENG6 - KNF - FSD3 - 631 E-285		05/16	EDWIN FARRAND	5	EAST CAMP/0730	EAST CAMP/1930
ENG6 - TGF FORESTRY AND FIRE, INC. - C94783 - E E-287		05/22	JASON SARTIN	3	EAST CAMP/0730	EAST CAMP/1930
WTS2 - SUPPORT TIPTON & YOUNG CONSTRUCT E-347		05/25	ROBERT COYLE	1	EAST CAMP/0730	EAST CAMP/1930
ENG6 - WILDLANDS FIRE SERVICE INC - C93328 - 5 E-539		05/23	DAVID HOGREFE	3	EAST CAMP/0730	EAST CAMP/1930
TFLD - O-256		05/15	ANDREW PASCARELLA, JASON GILLIS (T)	1	EAST CAMP/0730	EAST CAMP/1930
ENG6 - GFC4201278 E-706		05/26		3	EAST CAMP/0730	EAST CAMP/1930
ENG6 - 6171 E-77		05/21	MARK CLAY	3	EAST CAMP/0730	EAST CAMP/1930
ENG6 - NC-NCS - PK-7795 E-533		05/23	MICHAEL BLAKE	2	EAST CAMP/0730	EAST CAMP/1930
ENG6 - WILLIAMS WILDLAND FIRE SERVICES, LLC - C E-143		05/16	MICHAEL MCNAUGHTON	3	EAST CAMP/0730	EAST CAMP/1930
8. Division/Group Communication Summary						
Function	Channel	RX Frequency N/W	RX Tone/NAC	TX Frequency N/W	TX Tone/NAC	Mode
AIR TO GROUND	4	169.2000N	NONE	169.2000N	NONE	A
COMMAND	5	159.4650N	NONE	151.1450N	123.0	A
TACTICAL	11	163.7125N	NONE	163.7125N	NONE	A
AIR TO GROUND	14	166.6750N	NONE	166.6750N	NONE	A
AIR TO GROUND	15	169.1500N	NONE	169.1500N	NONE	A
AIR GUARD	16	168.6250N	NONE	168.6250N	110.9	A
9. Prepared By (Resource Unit Leader)			Approved By (Planning Section Chief)		Date	Time
TIFFANY PATE			BRIAN ELDREDGE		05/14/2017	2000

Division/Group Assignment List (ICS 204 WF)

1. Incident Name:			3.			
WEST MIMS			IV		A	
2. Operational Period: DAY SHIFT 0830-2030						
Date/Time From: 05/15/2017 0730 MON		Date/Time To: 05/15/2017 1930 MON				
4. Operations Personnel						
PLANNING OPERATIONS CHIEF		STEVE WEAVER, BEALE MONDAY (T) DAVE WALKER, MIKE DAVIS (T)		OPERATIONS CHIEF		JIM DURRWACHTER L. SMITH (T), S. BOWMAN (T)
BRANCH DIRECTOR		RON SMITH		DIVISION/GROUP SUPERVISOR		JAMES ROURKS
SAFETY		LARRY CONNELL		AIR TACTICAL GROUP SUPERVISOR		CHRIS WORRELL
5. Resources Assigned this Period						
Strike Team / Task Force / Resource Designator		LWD	Leader	Number Persons	Drop Off PT./Time	Pick Up PT./Time
STEQ O-258		05/16	TODD M MILAM	1	EAST CAMP/0730	EAST CAMP/1930
TPL2 - ORANGE SPRINGS CONST., INC - E-460		05/20	HUGH MATCHETT	1	EAST CAMP/0730	EAST CAMP/1930
TPL4 - GFC3204 E-404		05/16	DAVID COTTLES	1	EAST CAMP/0730	EAST CAMP/1930
TPL4 - GFC3226 E-405		05/16	BRANDON CHAFIN	1	EAST CAMP/0730	EAST CAMP/1930
TPL4 - GFC1467 E-406		05/25	BRYANT JENSON	1	EAST CAMP/0730	EAST CAMP/1930
TFLD E-56.10		05/23	DANIEL CASTO	1	EAST CAMP/0730	EAST CAMP/1930
ENG6-E631 E-56		05/23	TERRY HOPE	3	EAST CAMP/0730	EAST CAMP/1930
DOZ3 - VIN# 302873 E-623		05/24	KELLY PITTMAN	1	EAST CAMP/0730	EAST CAMP/1930
EXCAVATOR T3 - VIN# GXHFE E-622		05/24	BUCK TODDENBERRY	1	EAST CAMP/0730	EAST CAMP/1930
STAM O-532		05/25	ADAM DUMMER	1	EAST CAMP/0730	EAST CAMP/1930
STAM O-534		05/26	CHRISTOPHER RUDD	1	EAST CAMP/0730	EAST CAMP/1930
EMPF E-374 6 602-376-9812		05/16	PAUL PUGH	1	EAST CAMP/0730	EAST CAMP/1930
SOF2 O-516		05/24	RON GARCIA	1	EAST CAMP/0730	EAST CAMP/1930
SOF2 O-540		05/27	JACK BENZILIO	1	EAST CAMP/0730	EAST CAMP/1930
8. Division/Group Communication Summary						
Function	Channel	RX Frequency N/W	RX Tone/NAC	TX Frequency N/W	TX Tone/NAC	Mode
AIR TO GROUND	4	169.2000N	NONE	169.2000N	NONE	A
COMMAND	5	159.4650N	NONE	151.1450N	123.0	A
TACTICAL	11	163.7125N	NONE	163.7125N	NONE	A
AIR TO GROUND	14	166.6750N	NONE	166.6750N	NONE	A
AIR TO GROUND	15	169.1500N	NONE	169.1500N	NONE	A
AIR GUARD	16	168.6250N	NONE	168.6250N	110.9	A
9. Prepared By (Resource Unit Leader)			Approved By (Planning Section Chief)		Date	Time
TIFFANY PATE			BRIAN ELDREDGE		05/14/2017	2000

Division/Group Assignment List (ICS 204 WF)

1. Incident Name:			3.				
WEST MIMS			IV		A		
2. Operational Period: DAY SHIFT 0830-2030							
Date/Time From: 05/15/2017 0730 MON		Date/Time To: 05/15/2017 1930 MON					
4. Operations Personnel							
PLANNING OPERATIONS CHIEF		STEVE WEAVER, BEALE MONDAY (T) DAVE WALKER, MIKE DAVIS (T)		OPERATIONS CHIEF		JIM DURRWACHTER L. SMITH (T), S. BOWMAN (T)	
BRANCH DIRECTOR		RON SMITH		DIVISION/GROUP SUPERVISOR		JAMES ROURKS	
SAFETY		LARRY CONNELL		AIR TACTICAL GROUP SUPERVISOR		CHRIS WORRELL	
6. Control Operations/Work Assignments:							
<p>Purpose: Keep fire North of FL 2 between DP1 and DP46. Task: Patrol and mop up within 50 ft of fire perimeter. Respond to any new starts within Div. Determine and report contained line to Planning OSC1. End State: Confine fire perimeter to reduce threats and minimize damage to private timberlands and resources values at risk.</p>							
7. Special Instructions:							
<p>Ensure LCES is in place before operations begin and stay hydrated. Drive defensively and with lights on at all times. Identify escape routes. Bridge near DP 9 restricted to pickups - No engines. Bridge on swamp perimeter road just east of first Branch has steep drop offs - 1 lane travel - watch for barricades.</p> <p>DIVS Chad Williamson STEQ with 3 T2 Tractor Plow STEQ with 4 T3 Tractor Plow</p> <p>Medical Emergency Channel: Command ETA for Ambulance to Scene: Air: 10 mins Ground: 15 mins Approved Helispot: Drop Point 1 Lat: N 30 30.929 Long: W 82 14.174</p> <p>Primary - Ambulance is ground contact with air ambulance Secondary - IWI- IC or approved person will use channel 16 (Air Guard) for ground contact with air ambulance</p>							
8. Division/Group Communication Summary							
Function		Channel	RX Frequency N/W	RX Tone/NAC	TX Frequency N/W	TX Tone/NAC	Mode
AIR TO GROUND		4	169.2000N	NONE	169.2000N	NONE	A
COMMAND		5	159.4650N	NONE	151.1450N	123.0	A
TACTICAL		11	163.7125N	NONE	163.7125N	NONE	A
AIR TO GROUND		14	166.6750N	NONE	166.6750N	NONE	A
AIR TO GROUND		15	169.1500N	NONE	169.1500N	NONE	A
AIR GUARD		16	168.6250N	NONE	168.6250N	110.9	A
9. Prepared By (Resource Unit Leader)			Approved By (Planning Section Chief)			Date	Time
TIFFANY PATE			BRIAN ELDREDGE			05/14/2017	2000

Division/Group Assignment List (ICS 204 WF)

1. Incident Name:			3.			
WEST MIMS			IV		CONTINGENCY	
2. Operational Period: DAY SHIFT 0830-2030						
Date/Time From: 05/15/2017 0730 MON		Date/Time To: 05/15/2017 1930 MON				
4. Operations Personnel						
PLANNING OPERATIONS CHIEF		STEVE WEAVER, BEALE MONDAY (T) DAVE WALKER, MIKE DAVIS (T)		OPERATIONS CHIEF		
				JIM DURRWACHTER L. SMITH (T), S. BOWMAN (T)		
BRANCH DIRECTOR		STEVE MILLER		DIVISION/GROUP SUPERVISOR		
				BLAIR JOINER (GA) CHAD WILLIAMSON (FL)		
SAFETY		BRAD LIDELL, MIKE COOK TONY RIVERS (T)		AIR TACTICAL GROUP SUPERVISOR		
				CHRIS WORRELL		
5. Resources Assigned this Period						
Strike Team / Task Force / Resource Designator		LWD	Leader	Number Persons	Drop Off PT./Time	Pick Up PT./Time
GEORGIA					DP 10/0730	DP 10/1930
STEQ			JAMEY SMITH	1	DP 10/0730	DP 10/1930
TPL ATKINSON 60/70			HARPER	1	DP 10/0730	DP 10/1930
TPL BRANTLEY 62/72			EDGY	1	DP 10/0730	DP 10/1930
TPL CLINCH 62/72			BROWN	1	DP 10/0730	DP 10/1930
STEQ			THEO CRADDOCK	1	DP 10/0730	DP 10/1930
TPL BEH HILL 60/70			ASH	1	DP 10/0730	DP 10/1930
TPL MITCHELL 60/70			SINGLETON	1	DP 10/0730	DP 10/1930
TPL EARLY 60/70			STANIFER	1	DP 10/0730	DP 10/1930
TPL BROOKS 62/72			HARDEN	1	DP 10/0730	DP 10/1930
ENG6 COWETTA 86			EVANS & BUTTS	2	DP 10/0730	DP 10/1930
ENG6 JONES 86			SAUNDERS & PRESCOTT	2	DP 10/0730	DP 10/1930
ENG6 MCDUFFIE 86			PEEBLES & ELLSION	2	DP 10/0730	DP 10/1930
STEQ			TIM CROSBY	1	DP 10/0730	DP 10/1930
TPL APPLING 62/72			YAWN	1	DP 10/0730	DP 10/1930
TPL LOWNDES 63/73			STONE	1	DP 10/0730	DP 10/1930
TPL BACON 61/71			TAYLOR	1	DP 10/0730	DP 10/1930
8. Division/Group Communication Summary						
Function	Channel	RX Frequency N/W	RX Tone/NAC	TX Frequency N/W	TX Tone/NAC	Mode
AIR TO GROUND	4	169.2000N	NONE	169.2000N	NONE	A
TACTICAL	11	163.7125N	NONE	163.7125N	NONE	A
AIR TO GROUND	14	166.6750N	NONE	166.6750N	NONE	A
AIR TO GROUND	15	169.1500N	NONE	169.1500N	NONE	A
AIR GUARD	16	168.6250N	NONE	168.6250N	110.9	A
9. Prepared By (Resource Unit Leader)			Approved By (Planning Section Chief)		Date	Time
TIFFANY PATE			BRIAN ELDREDGE		05/14/2017	2000

Division/Group Assignment List (ICS 204 WF)

1. Incident Name:			3.			
WEST MIMS			IV		CONTINGENCY	
2. Operational Period: DAY SHIFT 0830-2030						
Date/Time From: 05/15/2017 0730 MON		Date/Time To: 05/15/2017 1930 MON				
4. Operations Personnel						
PLANNING OPERATIONS CHIEF		STEVE WEAVER, BEALE MONDAY (T) DAVE WALKER, MIKE DAVIS (T)		OPERATIONS CHIEF		JIM DURRWACHTER L. SMITH (T), S. BOWMAN (T)
BRANCH DIRECTOR		STEVE MILLER		DIVISION/GROUP SUPERVISOR		BLAIR JOINER (GA) CHAD WILLIAMSON (FL)
SAFETY		BRAD LIDELL, MIKE COOK TONY RIVERS (T)		AIR TACTICAL GROUP SUPERVISOR		CHRIS WORRELL
5. Resources Assigned this Period						
Strike Team / Task Force / Resource Designator		LWD	Leader	Number Persons	Drop Off PT./Time	Pick Up PT./Time
FLORIDA					DP 10/0730	DP 10/1930
STEQ			SMITHERMAN	1	DP 10/0730	DP 10/1930
TPL GAINESVILLE 50			SMITH	1	DP 10/0730	DP 10/1930
TPL GAINESVILLE 36			DISNEY	1	DP 10/0730	DP 10/1930
TPL FIELD OPS 36			WILLIAMS	1	DP 10/0730	DP 10/1930
TPL FIELD OPS 34			DEHOFF	1	DP 10/0730	DP 10/1930
ENG6 HAMBERSHAM 86			ANDERSON & BROWN	2	DP 10/0730	DP 10/1930
ENG6 POLK 86			RUMLEY & ROLAND	2	DP 10/0730	DP 10/1930
ENG6 TATTNAIL 86			BOULINEAU & JONES	2	DP 10/0730	DP 10/1930
6. Control Operations/Work Assignments:						
Purpose: To provide suppression support for incident.						
Task: Resources are ready upon call for IA or extended attack.						
End Shift: Ready support resources available to respond to protect structures, timberland and other resource values at risk.						
7. Special Instructions:						
<ul style="list-style-type: none"> Staged at Jon Bethea (DP 10), resources are assigned as needed. GA resources report to staging on swing shift hours 1200-2400. 						
8. Division/Group Communication Summary						
Function	Channel	RX Frequency N/W	RX Tone/NAC	TX Frequency N/W	TX Tone/NAC	Mode
AIR TO GROUND	4	169.2000N	NONE	169.2000N	NONE	A
TACTICAL	11	163.7125N	NONE	163.7125N	NONE	A
AIR TO GROUND	14	166.6750N	NONE	166.6750N	NONE	A
AIR TO GROUND	15	169.1500N	NONE	169.1500N	NONE	A
AIR GUARD	16	168.6250N	NONE	168.6250N	110.9	A
9. Prepared By (Resource Unit Leader)			Approved By (Planning Section Chief)		Date	Time
TIFFANY PATE			BRIAN ELDREDGE		05/14/2017	2000

Division/Group Assignment List (ICS 204 WF)

1. Incident Name:			3.			
WEST MIMS			IV		Division/Group:	
2. Operational Period: DAY SHIFT 0830-2030					STRUCTURE PROTECTION	
Date/Time From: 05/15/2017 0730 MON		Date/Time To: 05/15/2017 1930 MON				
4. Operations Personnel						
PLANNING OPERATIONS CHIEF				OPERATIONS CHIEF JIM DURRWACHTER, SHANNON BOWMAN (T) , L. SMITH (T)		
BRANCH DIRECTOR RON SMITH				STRUCTURE PROTECTION CRAIG ROBERTSON; RANDY JONES		
SAFETY LARRY CONNELL						
5. Resources Assigned this Period						
Strike Team / Task Force / Resource Designator		LWD	Leader	Number Persons	Drop Off PT./Time	Pick Up PT./Time
STEN O-327		05/19	LARRY BLYTHE	1	EAST CAMP/0730	EAST CAMP/1930
ENG6 - OK-CNA #0861 E-411		05/19	RUBEN CHUCKLUCK	3	EAST CAMP/0730	EAST CAMP/1930
ENG6 - OK-OSA #0661 E-412		05/19	ROSS WALKER	3	EAST CAMP/0730	EAST CAMP/1930
ENG6 OK-WEA #1061 E-413		05/19	ALAN PRATT	3	EAST CAMP/0730	EAST CAMP/1930
ENG6 NC-ECA #5261 E-414		05/19	CHARLES PARRISH	3	EAST CAMP/0730	EAST CAMP/1930
ENG6 - NC-ECA #5262 E-415		05/19	MARIO ESQUIVEL	3	EAST CAMP/0730	EAST CAMP/1930
ENG6 - E483		05/24	TONY REBO	4	EAST CAMP/0730	EAST CAMP/1930
TFLD O-352		05/20	DENNIS WILSON	1	EAST CAMP/0730	EAST CAMP/1930
ENG3 E-422		05/20	BRENT KISSICK	5	EAST CAMP/0730	EAST CAMP/1930
ENG3 E-423		05/19	DUSTIN LOPEZ	5	EAST CAMP/0730	EAST CAMP/1930
DOZ3 E-449		05/20	STEVE BATTLE	1	EAST CAMP/0730	EAST CAMP/1930
HEQB O-275		05/14	CHARLES DANIELS	1	EAST CAMP/0730	EAST CAMP/1930
JD 6415 - ROT RANCH E-73		05/14	DARYL	1	EAST CAMP/0730	EAST CAMP/1930
MAST ROT RANCH E-74		05/14	PARISH	1	EAST CAMP/0730	EAST CAMP/1930
LOWBOY - ROT RANCH E-75		05/14			EAST CAMP/0730	EAST CAMP/1930
FUEL TRUCK		05/14		1	EAST CAMP/0730	EAST CAMP/1930
STEQ O-421		05/23	MARIO MARQUEZ	1	EAST CAMP/0730	EAST CAMP/1930
8. Division/Group Communication Summary						
Function	Channel	RX Frequency N/W	RX Tone/NAC	TX Frequency N/W	TX Tone/NAC	Mode
AIR TO GROUND	4	169.2000N	NONE	169.2000N	NONE	A
TACTICAL	11	163.7125N	NONE	163.7125N	NONE	A
TACTICAL	13	159.4125N	NONE	159.4125N	NONE	A
AIR TO GROUND	14	166.6750N	NONE	166.6750N	NONE	A
AIR TO GROUND	15	169.1500N	NONE	169.1500N	NONE	A
AIR GUARD	16	168.6250N	NONE	168.6250N	110.9	A
9. Prepared By (Resource Unit Leader)			Approved By (Planning Section Chief)		Date	Time
TIFFANY PATE			BRIAN ELDREDGE		05/14/2017	2000

Division/Group Assignment List (ICS 204 WF)

1. Incident Name:			3.			
WEST MIMS			IV	Branch:		Division/Group:
2. Operational Period: DAY SHIFT 0830-2030				STRUCTURE PROTECTION		
Date/Time From: 05/15/2017 0730	MON	Date/Time To: 05/15/2017 1930		MON		
4. Operations Personnel						
PLANNING OPERATIONS CHIEF			OPERATIONS CHIEF	JIM DURRWACHTER, SHANNON BOWMAN (T) , L. SMITH (T)		
BRANCH DIRECTOR	RON SMITH		STRUCTURE PROTECTION	CRAIG ROBERTSON;RANDY JONES		
SAFETY	LARRY CONNELL					
5. Resources Assigned this Period						
Strike Team / Task Force / Resource Designator	LWD	Leader	Number Persons	Drop Off PT./Time	Pick Up PT./Time	
TPL3 - ORANGE SPRINGS CONSTRUCTION, INC - E-481	05/19	LESLIE JETER	2	EAST CAMP/0730	EAST CAMP/1930	
SOF2 O-539	05/27	PAUL BOUCHER	1	EAST CAMP/0730	EAST CAMP/1930	
6. Control Operations/Work Assignments:						
Purpose: Ensure timely response to protect human life, property and public and private infrastructure.						
Task: Protect city of St. George residents and private property. Affirm contact procedures with Charlton County and Sheriff Dept to assure effective communication in event of or post community evacuation needs. Implement structure protection efforts within DIV Z, A, Y and Branch III, DIV O, N and M as needed. Coordinate with County EMS to determine special needs for road access.						
End State: Maintain communications with appropriate emergency management and Law Enforcement to protect public. Confine fire perimeter to reduce threats to structures, utilities and other values at risk.						
7. Special Instructions:						
Coordinate with Charlton County Structure Group. Jesse Jordon 912-816-6063 located at St George Elementary School.						
8. Division/Group Communication Summary						
Function	Channel	RX Frequency N/W	RX Tone/NAC	TX Frequency N/W	TX Tone/NAC	Mode
AIR TO GROUND	4	169.2000N	NONE	169.2000N	NONE	A
TACTICAL	11	163.7125N	NONE	163.7125N	NONE	A
TACTICAL	13	159.4125N	NONE	159.4125N	NONE	A
AIR TO GROUND	14	166.6750N	NONE	166.6750N	NONE	A
AIR TO GROUND	15	169.1500N	NONE	169.1500N	NONE	A
AIR GUARD	16	168.6250N	NONE	168.6250N	110.9	A
9. Prepared By (Resource Unit Leader)			Approved By (Planning Section Chief)		Date	Time
TIFFANY PATE			BRIAN ELDREDGE		05/14/2017	2000

Division/Group Assignment List (ICS 204 WF)

1. Incident Name:			3.			
WEST MIMS			IV		Y	
2. Operational Period: DAY SHIFT 0830-2030						
Date/Time From: 05/15/2017 0730 MON		Date/Time To: 05/15/2017 1930 MON				
4. Operations Personnel						
PLANNING OPERATIONS CHIEF		STEVE WEAVER, BEALE MONDAY (T) DAVE WALKER, MIKE DAVIS (T)		OPERATIONS CHIEF		
				JIM DURRWACHTER L. SMITH (T), S. BOWMAN (T)		
BRANCH DIRECTOR		STEVE MILLER		DIVISION/GROUP SUPERVISOR		
				JOE MORRIS		
SAFETY		LARRY CONNELL		AIR TACTICAL GROUP SUPERVISOR		
				CHRIS WORRELL		
5. Resources Assigned this Period						
Strike Team / Task Force / Resource Designator		LWD	Leader	Number Persons	Drop Off PT./Time	Pick Up PT./Time
TFLD O-508		05/25	LISA M GOWE	1	EAST CAMP/0730	EAST CAMP/1930
MODULE FWS - BALCONES O-440		05/23	ROB VERNACHIA	7	EAST CAMP/0730	EAST CAMP/1930
STEN O-423		05/23	MATT SMITH	1	EAST CAMP/0730	EAST CAMP/1930
ENG6 MURRAY 86 - 4201016 E-61		05/26	KENNETH HARKINS	2	EAST CAMP/0730	EAST CAMP/1930
ENG6 FRANKLIN 86 - GFC4202065 E-59		05/26	DOUGLAS SLAY	2	EAST CAMP/0730	EAST CAMP/1930
ENG6 CHATTOOGA 86 E-60		05/26	ETHAN BEAID	2	EAST CAMP/0730	EAST CAMP/1930
ENG6 NMSNF - ENGINE 661 E-604		05/26	LARRY MARTINEZ	3	EAST CAMP/0730	EAST CAMP/1930
ENGINE - T6 - BANKHEAD E611 E-654		05/26	GARY CRAIG MOORE	3	EAST CAMP/0730	EAST CAMP/1930
STEQ O-357		05/20	JASON ODOM	1	EAST CAMP/0730	EAST CAMP/1930
STEQ (T) O-372		05/19	JOE N BRINSON JR	1	EAST CAMP/0730	EAST CAMP/1930
DOZ2 - 750K - VIN# 242515 E-505		05/25	BRIAN JENKINS	1	EAST CAMP/0730	EAST CAMP/1930
DOZER - T2 - 650K - VIN# 271777 E-528		05/25	KURT HALL	1	EAST CAMP/0730	EAST CAMP/1930
DOZ2 - 750K - VIN# 271777 E-530		05/25	GREG DAVIS	1	EAST CAMP/0730	EAST CAMP/1930
WT - 357 - PB 350505 HASSELL E-476		05/26	ROBERT EDENFIELD		EAST CAMP/0730	EAST CAMP/1930
ENG6 - LANE ENTERPRISES, INC. - A05558 - 217 E-608		05/26	DAVID LANE	3	EAST CAMP/0730	EAST CAMP/1930
DOZ2 - JD 750K - VIN# 268173 E-504		05/25	JAIME EDENFIELD	1	EAST CAMP/0730	EAST CAMP/1930
ENGINE - T6 - DODGE 5500 ENGINE - T6 - ENGINE 603 E-662		05/27	MARK FRIZZELL	3	EAST CAMP/0730	EAST CAMP/1930
8. Division/Group Communication Summary						
Function	Channel	RX Frequency N/W	RX Tone/NAC	TX Frequency N/W	TX Tone/NAC	Mode
AIR TO GROUND	4	169.2000N	NONE	169.2000N	NONE	A
COMMAND	5	159.4650N	NONE	151.1450N	123.0	A
TACTICAL	9	159.2850N	NONE	159.2850N	156.7	A
AIR TO GROUND	14	166.6750N	NONE	166.6750N	NONE	A
AIR TO GROUND	15	169.1500N	NONE	169.1500N	NONE	A
AIR GUARD	16	168.6250N	NONE	168.6250N	110.9	A
9. Prepared By (Resource Unit Leader)			Approved By (Planning Section Chief)		Date	Time
TIFFANY PATE			BRIAN ELDREDGE		05/14/2017	2000

Division/Group Assignment List (ICS 204 WF)

1. Incident Name:			3.			
WEST MIMS			IV		Y	
2. Operational Period: DAY SHIFT 0830-2030						
Date/Time From: 05/15/2017 0730 MON		Date/Time To: 05/15/2017 1930 MON				
4. Operations Personnel						
PLANNING OPERATIONS CHIEF		STEVE WEAVER, BEALE MONDAY (T) DAVE WALKER, MIKE DAVIS (T)		OPERATIONS CHIEF		JIM DURRWACHTER L. SMITH (T), S. BOWMAN (T)
BRANCH DIRECTOR		STEVE MILLER		DIVISION/GROUP SUPERVISOR		JOE MORRIS
SAFETY		LARRY CONNELL		AIR TACTICAL GROUP SUPERVISOR		CHRIS WORRELL
5. Resources Assigned this Period						
Strike Team / Task Force / Resource Designator		LWD	Leader	Number Persons	Drop Off PT./Time	Pick Up PT./Time
WATER TENDER (TACTICAL) - VIN# 4723 E-575		06/01	JAMES SILVER	1	EAST CAMP/0730	EAST CAMP/1930
WT1 - VIN# E-588		05/27	HUBERT EDENFIELD	1	EAST CAMP/0730	EAST CAMP/1930
ENG6 - NMCIF - ENGINE 631 E-612		05/26	RICK F LUCERO		EAST CAMP/0730	EAST CAMP/1930
ENG6 - LANE ENTERPRISES, INC. - D07568 - 218 E-609		05/26	BARBARA STEPHENS	3	EAST CAMP/0730	EAST CAMP/1930
EMPF O-543 470-366-6301		05/27	PENNY MCDONAGH	1	EAST CAMP/0730	EAST CAMP/1930
SOF2 O-461		05/24	LARRY KLOCK	1	EAST CAMP/0730	EAST CAMP/1930
6. Control Operations/Work Assignments:						
Purpose: Keep fire East and North of DP 46 to DP 47						
Patrol and mop up within 50 ft of fire perimeter. Respond to any new starts within Div. Determine and report contained line to Planning OSC1.						
End State: Confine fire perimeter to reduce threats and minimize damage to private timberlands and resources values at risk.						
7. Special Instructions:						
Ensure LCES is in place before operations begin and stay hydrated. Drive defensively and with lights on at all times. Identify escape routes. Bridge near DP 9 restricted to pickups - No engines. Bridge on swamp perimeter road just east of first Branch has steep drop offs - 1 lane travel - watch for barricades.						
Medical Emergency Channel: Command ETA for Ambulance to Scene: Air: 10 mins						
8. Division/Group Communication Summary						
Function	Channel	RX Frequency N/W	RX Tone/NAC	TX Frequency N/W	TX Tone/NAC	Mode
AIR TO GROUND	4	169.2000N	NONE	169.2000N	NONE	A
COMMAND	5	159.4650N	NONE	151.1450N	123.0	A
TACTICAL	9	159.2850N	NONE	159.2850N	156.7	A
AIR TO GROUND	14	166.6750N	NONE	166.6750N	NONE	A
AIR TO GROUND	15	169.1500N	NONE	169.1500N	NONE	A
AIR GUARD	16	168.6250N	NONE	168.6250N	110.9	A
9. Prepared By (Resource Unit Leader)			Approved By (Planning Section Chief)		Date	Time
TIFFANY PATE			BRIAN ELDREDGE		05/14/2017	2000

Division/Group Assignment List (ICS 204 WF)

1. Incident Name:			3.			
WEST MIMS			IV	Y		
2. Operational Period: DAY SHIFT 0830-2030						
Date/Time From:	MON	Date/Time To:	MON			
05/15/2017 0730		05/15/2017 1930				
4. Operations Personnel						
PLANNING OPERATIONS CHIEF	STEVE WEAVER, BEALE MONDAY (T) DAVE WALKER, MIKE DAVIS (T)		OPERATIONS CHIEF	JIM DURRWACHTER L. SMITH (T), S. BOWMAN (T)		
BRANCH DIRECTOR	STEVE MILLER		DIVISION/GROUP SUPERVISOR	JOE MORRIS		
SAFETY	LARRY CONNELL		AIR TACTICAL GROUP SUPERVISOR	CHRIS WORRELL		
7. Special Instructions:						
<p>Ground: 15 mins Approved Helispot: Drop Point 1 Lat: N 30 30.929 Long: W 82 14.174 Primary - Ambulance is ground contact with air ambulance Secondary - IWI- IC or approved person will use channel 16 (Air Guard) for ground contact with air ambulance</p>						
8. Division/Group Communication Summary						
Function	Channel	RX Frequency N/W	RX Tone/NAC	TX Frequency N/W	TX Tone/NAC	Mode
AIR TO GROUND	4	169.2000N	NONE	169.2000N	NONE	A
COMMAND	5	159.4650N	NONE	151.1450N	123.0	A
TACTICAL	9	159.2850N	NONE	159.2850N	156.7	A
AIR TO GROUND	14	166.6750N	NONE	166.6750N	NONE	A
AIR TO GROUND	15	169.1500N	NONE	169.1500N	NONE	A
AIR GUARD	16	168.6250N	NONE	168.6250N	110.9	A
9. Prepared By (Resource Unit Leader)			Approved By (Planning Section Chief)		Date	Time
TIFFANY PATE			BRIAN ELDREDGE		05/14/2017	2000

Division/Group Assignment List (ICS 204 WF)

1. Incident Name:			3.			
WEST MIMS			IV		Z	
2. Operational Period: DAY SHIFT 0830-2030						
Date/Time From: 05/15/2017 0730 MON		Date/Time To: 05/15/2017 1930 MON				
4. Operations Personnel						
PLANNING OPERATIONS CHIEF		STEVE WEAVER; BEALE MONDAY (T) DAVE WALKER, MIKE DAVIS (T)		OPERATIONS CHIEF		JAMES DURRWACHTER LARRY SMITH (T), SHANNON BOWMAN
BRANCH DIRECTOR		STEVE MILLER		DIVISION/GROUP SUPERVISOR		JIMMY FLANIGAN
SAFETY		LARRY CONNELL		AIR TACTICAL GROUP SUPERVISOR		CHRIS WORRELL
5. Resources Assigned this Period						
Strike Team / Task Force / Resource Designator		LWD	Leader	Number Persons	Drop Off PT./Time	Pick Up PT./Time
STEN O-354		05/20	MARTIN CASSELLIUS	1	EAST CAMP/0730	EAST CAMP/1930
ENG6 - NC-NCS - PJ-9126 E-455		05/21	ASHLEY KING	2	EAST CAMP/0730	EAST CAMP/1930
ENG6 - NC-NCS - PJ-9244 E-485		05/21	JASON O'NEAL	2	EAST CAMP/0730	EAST CAMP/1930
HEQB O-356		05/19	LANDON CHASE BASS	1	EAST CAMP/0730	EAST CAMP/1930
TFLD O-350		05/19	NATHANIEL TODD NIGHTINGALE	1	EAST CAMP/0730	EAST CAMP/1930
TFLD (T) O-513		05/24	NEIL CLINEMAN	1	EAST CAMP/0730	EAST CAMP/1930
TFLD O-351		05/20	MICHAEL SEAN STANAWAY	1	EAST CAMP/0730	EAST CAMP/1930
TPL3 - WILDLANDS FIRE SRVC INC - 99744 E-465		05/20	NIC COOKSEY	2	EAST CAMP/0730	EAST CAMP/1930
STEN O-414		05/23	TIEGE DOWNES	1	EAST CAMP/0730	EAST CAMP/1930
ENG6 - REDBIRD E6171 E-447		05/20	RUPERT NOWLIN	2	EAST CAMP/0730	EAST CAMP/1930
ENG6 - NC-NCS - PP-7115 E-456		05/20	ROBERT WHITE	2	EAST CAMP/0730	EAST CAMP/1930
ENG6 - OLF - E-692 E-482		05/21	LYNDSEY KUPFER	4	EAST CAMP/0730	EAST CAMP/1930
ENG6 - NC-NCS - PJ-7956 E-484		05/20	JOSEPH BRANDON WEBB	2	EAST CAMP/0730	EAST CAMP/1930
ENGINE - T6 - NC-NCS - PJ-9218 E-486		05/20	JOHN KESSLER	2	EAST CAMP/0730	EAST CAMP/1930
8. Division/Group Communication Summary						
Function	Channel	RX Frequency N/W	RX Tone/NAC	TX Frequency N/W	TX Tone/NAC	Mode
AIR TO GROUND	4	169.2000N	NONE	169.2000N	NONE	A
COMMAND	5	159.4650N	NONE	151.1450N	123.0	A
TACTICAL	10	168.3500N	NONE	168.3500N	NONE	A
AIR TO GROUND	14	166.6750N	NONE	166.6750N	NONE	A
AIR TO GROUND	15	169.1500N	NONE	169.1500N	NONE	A
AIR GUARD	16	168.6250N	NONE	168.6250N	110.9	A
9. Prepared By (Resource Unit Leader)			Approved By (Planning Section Chief)		Date	Time
TIFFANY PATE			BRIAN ELDREDGE		05/14/2017	2000

Division/Group Assignment List (ICS 204 WF)

1. Incident Name:			3.			
WEST MIMS			IV		Z	
2. Operational Period: DAY SHIFT 0830-2030						
Date/Time From: 05/15/2017 0730 MON		Date/Time To: 05/15/2017 1930 MON				
4. Operations Personnel						
PLANNING OPERATIONS CHIEF		STEVE WEAVER; BEALE MONDAY (T) DAVE WALKER, MIKE DAVIS (T)		OPERATIONS CHIEF		
				JAMES DURRWACHTER LARRY SMITH (T), SHANNON BOWMAN		
BRANCH DIRECTOR		STEVE MILLER		DIVISION/GROUP SUPERVISOR		
				JIMMY FLANIGAN		
SAFETY		LARRY CONNELL		AIR TACTICAL GROUP SUPERVISOR		
				CHRIS WORRELL		
5. Resources Assigned this Period						
Strike Team / Task Force / Resource Designator		LWD	Leader	Number Persons	Drop Off PT./Time	Pick Up PT./Time
STEQ O-357		05/20	JASON ODOM	1	EAST CAMP/0730	EAST CAMP/1930
STEQ O-300		05/16	JAMES MASHBURN	1	EAST CAMP/0730	EAST CAMP/1930
HEQB (T) O-372		05/18	JOE N BRINSON JR	1	EAST CAMP/0730	EAST CAMP/1930
TPL3 - GFC3288 E-367		05/16	ROB MORE	1	EAST CAMP/0730	EAST CAMP/1930
TPL3 - GFC3234 E-368		05/16	BRANDON DAVIS	1	EAST CAMP/0730	EAST CAMP/1930
TPL5 - GFC3219 E-369		05/16	RUSSELL FOWLER	1	EAST CAMP/0730	EAST CAMP/1930
WTT2 - VIN# 009542 E-409		05/22	DALE GAY	1	EAST CAMP/0730	EAST CAMP/1930
ENG6 - ATTACK-ONE FIRE MANAGEMENT SERVICES INC E-537		05/22	WES COLEMAN	2	EAST CAMP/0730	EAST CAMP/1930
ENG6 - NC-NCS - PJ-7577 E-532		05/22	BRETT EVANS	2	EAST CAMP/0730	EAST CAMP/1930
TPL3 - NC-NCS - 3X65 E-569		05/23	DANIEL TAYLER	2	EAST CAMP/0730	EAST CAMP/1930
TPL3 - NC-NCS - 3X77 E-568		05/23	DENNIS LEE REES	2	EAST CAMP/0730	EAST CAMP/1930
ENG6 - BOULDER COUNTY SHERIFF - ENGINE 6532 E-538		05/23	PETER KORETZ	3	EAST CAMP/0730	EAST CAMP/1930
ENG6 - FOUR MILE FD - BRUSH 4632 E-540		05/23	ZACH LITTLEFIELD	3	EAST CAMP/0730	EAST CAMP/1930
TFLD O-417		05/23	ERIC R HUGHES	1	EAST CAMP/0730	EAST CAMP/1930
ENG6 - BUSH FIRE - VIN# 260743 E-541		05/23	ROBBIE ROBERTSON	3	EAST CAMP/0730	EAST CAMP/1930
8. Division/Group Communication Summary						
Function	Channel	RX Frequency N/W	RX Tone/NAC	TX Frequency N/W	TX Tone/NAC	Mode
AIR TO GROUND	4	169.2000N	NONE	169.2000N	NONE	A
COMMAND	5	159.4650N	NONE	151.1450N	123.0	A
TACTICAL	10	168.3500N	NONE	168.3500N	NONE	A
AIR TO GROUND	14	166.6750N	NONE	166.6750N	NONE	A
AIR TO GROUND	15	169.1500N	NONE	169.1500N	NONE	A
AIR GUARD	16	168.6250N	NONE	168.6250N	110.9	A
9. Prepared By (Resource Unit Leader)			Approved By (Planning Section Chief)		Date	Time
TIFFANY PATE			BRIAN ELDREDGE		05/14/2017	2000

Division/Group Assignment List (ICS 204 WF)

1. Incident Name:			3.			
WEST MIMS			IV		Z	
2. Operational Period: DAY SHIFT 0830-2030						
Date/Time From: 05/15/2017 0730 MON		Date/Time To: 05/15/2017 1930 MON				
4. Operations Personnel						
PLANNING OPERATIONS CHIEF		STEVE WEAVER; BEALE MONDAY (T) DAVE WALKER, MIKE DAVIS (T)		OPERATIONS CHIEF		JAMES DURRWACHTER LARRY SMITH (T), SHANNON BOWMAN
BRANCH DIRECTOR		STEVE MILLER		DIVISION/GROUP SUPERVISOR		JIMMY FLANIGAN
SAFETY		LARRY CONNELL		AIR TACTICAL GROUP SUPERVISOR		CHRIS WORRELL
5. Resources Assigned this Period						
Strike Team / Task Force / Resource Designator		LWD	Leader	Number Persons	Drop Off PT./Time	Pick Up PT./Time
EMPF E-314		05/17	STAN BANGS	1	EAST CAMP/0730	EAST CAMP/1930
WTT2 (TACTICAL) - VIN# 9250 E-574		06/01	TONY TIPTON	1	EAST CAMP/0730	EAST CAMP/1930
WTT2 - VIN# 557261 E-410		05/27	BENJAMIN JOHNS	1	EAST CAMP/0730	EAST CAMP/1930
SOF2 O-492		05/24	TIMOTHY OLIVERIUS	1	EAST CAMP/0730	EAST CAMP/1930
6. Control Operations/Work Assignments:						
Purpose: Keep fire North and West between DP 47 and DP 40.						
Task: Prep control lines with dozers to establish or strengthen containment. Coordinate strategic firing with unified ICs. Coordinate with Structure Protection specialist on triage of structures for point protection. Utilize aviation assets to protect human life and property supporting ground assets.						
End State: Contain fire perimeter to minimize damage to both public and private infrastructure and protect resource values at risk.						
7. Special Instructions:						
Medical Emergency Channel: Command ETA for Ambulance to Scene: Air: 7 mins Ground: 15 mins Approved Helispot: POGO Helibase Lat: N 30 44.26 Long: W 82 07.69 Primary - Ambulance is ground contact with air ambulance Secondary - IWI- IC or approved person will use channel 16 (Air Guard) for ground contact with air ambulance						
2 - TPL Okie - O/H Donnie Harris DIVS 1 - 1050 KG - with operator GFC						
8. Division/Group Communication Summary						
Function	Channel	RX Frequency N/W	RX Tone/NAC	TX Frequency N/W	TX Tone/NAC	Mode
AIR TO GROUND	4	169.2000N	NONE	169.2000N	NONE	A
COMMAND	5	159.4650N	NONE	151.1450N	123.0	A
TACTICAL	10	168.3500N	NONE	168.3500N	NONE	A
AIR TO GROUND	14	166.6750N	NONE	166.6750N	NONE	A
AIR TO GROUND	15	169.1500N	NONE	169.1500N	NONE	A
AIR GUARD	16	168.6250N	NONE	168.6250N	110.9	A
9. Prepared By (Resource Unit Leader)			Approved By (Planning Section Chief)		Date	Time
TIFFANY PATE			BRIAN ELDREDGE		05/14/2017	2000

Division/Group Assignment List (ICS 204 WF)

1. Incident Name:			3.			
WEST MIMS			IV	Z		
2. Operational Period: DAY SHIFT 0830-2030						
Date/Time From:	MON	Date/Time To:	MON			
05/15/2017 0730		05/15/2017 1930				
4. Operations Personnel						
PLANNING OPERATIONS CHIEF	STEVE WEAVER; BEALE MONDAY (T) DAVE WALKER, MIKE DAVIS (T)		OPERATIONS CHIEF	JAMES DURRWACHTER LARRY SMITH (T), SHANNON BOWMAN		
BRANCH DIRECTOR	STEVE MILLER		DIVISION/GROUP SUPERVISOR	JIMMY FLANIGAN		
SAFETY	LARRY CONNELL		AIR TACTICAL GROUP SUPERVISOR	CHRIS WORRELL		
7. Special Instructions:						
1 - Appalachia 750 (Lease) with operator DIVS Blair Joiner STEQ with 3-T2 Tractor Plow STEQ (Weaver) with 4-T3 Tractor Plow						
8. Division/Group Communication Summary						
Function	Channel	RX Frequency N/W	RX Tone/NAC	TX Frequency N/W	TX Tone/NAC	Mode
AIR TO GROUND	4	169.2000N	NONE	169.2000N	NONE	A
COMMAND	5	159.4650N	NONE	151.1450N	123.0	A
TACTICAL	10	168.3500N	NONE	168.3500N	NONE	A
AIR TO GROUND	14	166.6750N	NONE	166.6750N	NONE	A
AIR TO GROUND	15	169.1500N	NONE	169.1500N	NONE	A
AIR GUARD	16	168.6250N	NONE	168.6250N	110.9	A
9. Prepared By (Resource Unit Leader)			Approved By (Planning Section Chief)		Date	Time
TIFFANY PATE			BRIAN ELDREDGE		05/14/2017	2000

AIR OPERATIONS SUMMARY (ICS220)

Prepared by: Brad Bernardy

Prepared Date: 5/14/2017

Prepared Time: 17:00

1. INCIDENT NAME: West Mims	2. OPS PERIOD DATE: 5/15/17	START TIME: 0900	END TIME: 2030	SUNRISE: 0633	SUNSET TIME: 2016 (Folkston)
3. REMARKS Safety Notes: Hazards (SEE AND AVOID GENERAL AVIATION TRAFFIC AND AERIAL HAZARDS) -Maintain clear communications; confirm that drop location is clear; ground personnel state: "Clear to Drop" -Incident Aircraft conduct flight following with Pogo Helibase when ATGS is not up. -Aerial Ignition Group: Helicopter 7HX with PLDO; FIRB, Joe Chastain. ORDERING/FLIGHT REQUESTS -Request Helicopter water drops through Air Attack -Request aerial ignition through Operations -Request Tankers/Retardant through Air Attack -Requests for Reconnaissance missions must go through Operations for pre-approval E-MAIL AIRCRAFT COSTS DAILY AT END OF SHIFT TO: john_mason@fws.gov			4. READY ALERT AIRCRAFT: 7HX Call 911 to request LIFEFLIGHT aircraft.		5. TFR: 7/1766; Surface to 3500' MSL; See NOTAM for full description. Frequency 120.8500

6. PERSONNEL	NAME	PHONE #	7. FREQUENCIES	AM	FM	8. FIXED-WING- Type/ Make-Model/ N#/ Base
AOBD AOBD -Deputy	Tim Faust Brad Bernardy Air Ops Desk	702-271-6055 601-540-6528 912-637-5133	A/A - Fixed Wing A/A - Rotor / TFR A/G (Request) A/G 66 (Primary) A/G 72 (Secondary)	120.3500 120.8500	 169.2000 166.6750 169.1500	AIR ATTACK – ATGS – Mark Nunez / AC690 / N690RA / LCQ 805-975-5227 ATGS(T) – Derek Wheeler 530-355-3274 ATGS – Chris Worrel / Kodiak / N420Q / LCQ 850-447-4597
ASGS	John Mason	478-951-7319				LEAD – ASM – Bravo xx As assigned
HEB2 - Pogo HEB1 - Lake City HEB1(T) - Lake City	Marc 'Boomer' Rudkin Nate Alexander Kris Paxson	307-287-0440 406-491-0878 719-660-7975	Deck/TOLC (Pogo) Deck (Lake City)		168.0500 163.100	TANKERS – As available (T-1) BAE146 / N473NA / LCQ (Off Sundays) (T-2) BAE146 / N474NA / LCQ (Off Mondays) (T-164) RJ-85A / N374AC / LCQ (Off Thursdays) (T-911) DC-10 / N17085 / CHA
	Pogo Helibase	912-496-4415				
	Lake City Helibase	561-512-6333	Air Guard		168.625 (110.9)	

9. HELICOPTER Remarks Box Legend: C=Cargo P=Passengers B=Bucket SN=Snorkel R=Rappel H=Hoist SH=Short Haul ME=Medical Evacuation/ Extraction Exu=Exclusive Use

FAA N#	T Y	MAKE/ MODEL	BASE	START	READY to FLY	REMARKS	FAA N#	T Y	MAKE/ MODEL	BASE	START	READY to FLY	REMARKS
27HX	3	Bell 407	Pogo (3GE1)	0700	0830	P, B Exu	611CK (701)	1	SH-3H / S-61	Lake City (LCQ)	0700	0730	SN Exu
351FW	3	AS350 B-2	Pogo (3GE1)	0700	0830	P, B Exu	612CK (702)	1	SH-3H / S-61	Lake City (LCQ)	0700	0730	SN CWN
471CH	1	CH-47D	Lake City (LCQ)	0700	0730	SN Exu	13FH	1	UH-60A	Lake City (LCQ)	0700	0730	B Exu
161KA	1	K-1200	Lake City (LCQ)	0700	0730	B Exu	137BH	1	S70A-27	Lake City (LCQ)	0700	0730	B *On Loan
699RH	1	K-1200	Lake City (LCQ)	0700	0730	B Exu	472CH	1	CH-47D	Lake City (LCQ)	0700	0730	SN *On Loan
312KA	1	K-1200	Lake City (LCQ)	0700	0730	B CWN							

INCIDENT RADIO COMMUNICATIONS PLAN (ICS 205)

1. Incident Name:	2. Date/Time Prepared:	3. Operational Period: DAY SHIFT 0830-2030	
WEST MIMS	Date: 05/14/2017 Time: 1810	Date/Time From: 05/15/2017 0730 MON	Date/Time To: 05/15/2017 1930 MON

4. Basic Radio Channel Use:

Zone Group	Ch #	Function	Channel Name/Trunked Radio System Talkgroup	Assignment	RX Freq	RX Tone/NAC	TX Freq	TX Tone/NAC	Mode (A,D, or M)	Remarks
1 BRCH 1	1	COMMAND	WEST OKEE REP		167.1250N	156.7	163.1500N	156.7	M	STEPHEN FOSTER STATE PARK
1 BRCH 1	2	COMMAND	S. FOSTER	NIGHT B/E,C/D	159.1200N	NONE	151.3700N	100.0	A	DIV B,C,D,E,ROAD MAINT,FL FFS CONTING. NIGHT STRUC
1 BRCH 1	3	COMMAND	CORNELIA		159.1200N	NONE	151.3700N	82.5	A	
1 BRCH 1	4	AIR TO GROUND	A/G REQUEST	ALL DIVISIONS	169.2000N	NONE	169.2000N	NONE	A	
1 BRCH 1	5	COMMAND	GFC EDDY	NIGHT B/C,	159.4650N	NONE	151.1450N	123.0	A	NIGHT D/E, NIGHT STRUCTURE
1 BRCH 1	6	TACTICAL	GFC TAC 1	NIGHT DIV B/C	159.3900N	NONE	159.3900N	156.7	A	NIGHT D/E, NIGHT STRUC, RD MAINT. FL FFS CONTINGEN
1 BRCH 1	7	TACTICAL	V FIRE 26		154.3025N	NONE	154.3025N	156.7	A	
1 BRCH 1	8	TACTICAL	OSCEOLA PROJECT		163.7125N	NONE	163.7125N	NONE	A	
1 BRCH 1	9	TACTICAL	SE COMPACT	DIV B, E	159.2850N	NONE	159.2850N	156.7	A	
1 BRCH 1	10	TACTICAL	REFUGE TAC 1		168.3500N	NONE	168.3500N	NONE	A	
1 BRCH 1	11	TACTICAL	REFUGE TAC 2		163.1000N	NONE	163.1000N	NONE	A	
1 BRCH 1	12	TACTICAL	FFS 199	DIV C	159.4425N	NONE	159.4425N	NONE	A	
1 BRCH 1	13	TACTICAL	FFS 200	DIV D	159.4125N	NONE	159.4125N	NONE	A	
1 BRCH 1	14	AIR TO GROUND	AIR TO GRD 66	A/G PRIMARY	166.6750N	NONE	166.6750N	NONE	A	AIR TO GROUND PRIMARY
1 BRCH 1	15	AIR TO GROUND	AIR TO GRD 72	A/G SECONDARY	169.1500N	NONE	169.1500N	NONE	A	AIR / GROUND TACTICAL
1 BRCH 1	16	AIR GUARD	AIR GUARD	ALL DIVISIONS	168.6250N	NONE	168.6250N	110.9	A	EMERGENCY AIRCRAFT COMMUNICATIONS

5. Special Instructions:

6. Prepared By (Communications Unit Leader)	Name: JERRY W. PATRICK	Signature:
ICS 205	IAP Page	Date/Time: 05/14/2017 1810

INCIDENT RADIO COMMUNICATIONS PLAN (ICS 205)

1. Incident Name:	2. Date/Time Prepared:	3. Operational Period: DAY SHIFT 0830-2030		
WEST MIMS	Date: 05/14/2017 Time: 1810	Date/Time From: 05/15/2017 0730	MON	Date/Time To: 05/15/2017 1930

4. Basic Radio Channel Use:

Zone Group	Ch #	Function	Channel Name/Trunked Radio System Talkgroup	Assignment	RX Freq	RX Tone/NAC	TX Freq	TX Tone/NAC	Mode (A,D, or M)	Remarks
2 BRCH 3&4	1	TACTICAL	V FIRE 21	MUTUAL AID	154.2800N	NONE	154.2800N	156.7	A	MUTUAL AID CHANNEL
2 BRCH 3&4	2	COMMAND	S. FOSTER		159.1200N	NONE	151.3700N	100.0	A	WEST
2 BRCH 3&4	3	COMMAND	CORNELIA	DIV M/N, IA, O	159.1200N	NONE	151.3700N	82.5	A	NIGHT O, NIGHT M/N,
2 BRCH 3&4	4	AIR TO GROUND	A/G REQUEST	ALL DIVISIONS	169.2000N	NONE	169.2000N	NONE	A	BY REQUEST ONLY
2 BRCH 3&4	5	COMMAND	GFC EDDY	DIV A, Y, Z	159.4650N	NONE	151.1450N	123.0	A	NIGHT A, NIGHT Z, DAY AND NIGHT STRUCTURE
2 BRCH 3&4	6	COMMAND	GA BEND		159.2700N	156.7	151.1000N	156.7	A	
2 BRCH 3&4	7	COMMAND	FARGO RPT		159.2700N	156.7	151.1000N	100.0	A	
2 BRCH 3&4	8	COMMAND	BAKER RPT		159.2700N	156.7	151.1000N	123.0	A	
2 BRCH 3&4	9	TACTICAL	COMPACT	DIV Y	159.2850N	NONE	159.2850N	156.7	A	
2 BRCH 3&4	10	TACTICAL	REFUGE TAC 1	DIV M/N, Z	168.3500N	NONE	168.3500N	NONE	A	
2 BRCH 3&4	11	TACTICAL	OSCEOLA PROJECT	DIV O, A	163.7125N	NONE	163.7125N	NONE	A	DIV O, IA, STRUCTURE, NIGHT O, NIGHT Z, CONTINGEN
2 BRCH 3&4	12	TACTICAL	FFS 199	IA, NIGHT O	159.4425N	NONE	159.4425N	NONE	A	NIGHT-M/N,
2 BRCH 3&4	13	TACTICAL	FFS 200	NIGHT STRUCTURE	159.4125N	NONE	159.4125N	NONE	A	DAY STRUCTURE
2 BRCH 3&4	14	AIR TO GROUND	AIR TO GRD 66	A/G PRIMARY	166.6750N	NONE	166.6750N	NONE	A	AIR / GROUND PRIMARY
2 BRCH 3&4	15	AIR TO GROUND	AIR TO GRD 72	A/G SECONDARY	169.1500N	NONE	169.1500N	NONE	A	AIR / GROUND SECONDARY
2 BRCH 3&4	16	AIR GUARD	AIR GUARD	ALL DIVISIONS	168.6250N	NONE	168.6250N	110.9	A	EMERGENCY AIRCRAFT COMMUNICATIONS

5. Special Instructions:

6. Prepared By (Communications Unit Leader)	Name: JERRY W. PATRICK	Signature:
ICS 205	IAP Page	Date/Time: 05/14/2017 1810

PHONE LIST - WEST MIMS FIRE

Position	Name	Phone Number	Position	Name	Phone Number
UNIFIED COMMAND			Telephone lines at ICP		
Red Team IC	Mike Dueitt	850-228-0320	Information/PIO		912-637-5132
Red Team IC(t)	Michael Goicochea	406-865-0975	Air Ops		912-637-5133
GA Forest Commision IC	Buck Kline	912-678-2694	Ordering		912-637-5107
Florida Forest Service IC	Rick Dolan	352-353-5101	Ordering		912-637-5136
Liason Officer	Keith Lawrence	803-522-5264	Ordering Fax		912-637-5104
Liason Officer	J.D.Lee	239-340-4626	Supply		912-637-5138
Liason Officer	Andy Gaston	706-508-2363	Ground Support		912-637-5105
PUBLIC INFORMATION	Land Line	912-637-5108	Information		912-637-5108
Information Desk		904-452-4627	Finance		912-637-5109
Public Information	Catherine Hibbard	413-531-4276	Finance Fax		912-637-5110
Public Information	Bonnie Strawser	252-423-0815	Operations		912-637-5112
Refuge Public Info	Susie Heisey	912-286-3110	Plans FAX		912-637-5115
AGENCY REPRESENTATIVES			Checkin		912-637-5137
Refuge FMO	Reese Kerbow	912-276-0167	Demob		912-637-5113
Refuge AFMO	Reggie Forcine	912-614-4041	Communications		912-637-5116
Refuge Manager	Mike Lusk	912-390-2193			
DNR Agency Liaison	SGT. Patrick Dupree	404-694-5596			
Ware Co EMA	Bill Parham	229-425-4549	Telephone lines at Eastside Camp		
Clinch Co EMA	Will Joyce	912-520-8581	Plans/Demob		912-496-3114
Lanier Co EMA	Randy Patten	229-482-5070	Plans Fax		912-496-3115
Charlton Co EMA	Bruce Young	912-390-2022	Operations		912-496-2278
Charlton Co Sheriff's Office	Inv. Clay Burnsel	912-276-2628	Ground Support		912-496-4368
Georgia EMA	Diane Adams	912-266-5421	Supply		912-496-3116
PLANNING			Communications		912-496-2293
PSC ICP	Brian Eldredge	208-869-6362	Medical		912-496-2289
PSC Eastside Camp	Terry Pierce	423-596-2694			
Fire Behavior Analyst	Gary Jarvis	251-288-1084			
Fire Behavior Analyst(t)	Kelly Cagle	336-302-0343	LAND OWNERS AND OTHER CONTACTS		
IMET	Joe Guoudsward	240-778-5279	Steve Davis	Am Forest Mgmt	912-614-1828
THSP-ARA	Dan Byrd	240-778-5278	Allen C. Cross	Rayonier US Forest	904-796-7929
IMET	Angie Enyedi	904-318-4041	Dave Gather	Okie Electric	912-390-9755
READ	Rocky Chesser	912-276-3232	Chad Edwards	Railroad Contact	540-797-9918
FWS READ	Carl Schmidt	478-365-2088	Steve Magnolia	FD Coordinator	904-537-5853
FWS READ	Daniel Barrant	352-490-1959	Terri Jenkins	FWS FD/VFD Contact	912-313-4225
FWS READ	Howard McClough	912-276-0552	Ned Neenan	Legacy Forestry	352-317-0738
FWS READ	Erin Daughtrey	912-223-6752	Ken Zaydel	Social Circle FD	404-205-2738
SITL	Terry Bowerman	423-552-3323			
SITL(t)	Kevin Hiers	229-560-8861			
GISS	Andrew Thompson	706-399-6459			
Finance	General	912-637-5109			
Chief	Bonny Johnson	859-556-1572			
FSC2	Reggie Lanier	912-314-1085			
Comp/Claims	Verma Coleman	470-532-8798			
Procurment	James Meredith	470-532-8810			
Time	Jean Frick	828-361-5361			
Ver 14May17pm					


PHONE LIST --A1:F42 WEST MIMS FIRE

Position	Name	Phone Number	Position	Name	Phone Number
OPERATIONS	Land Line	912-637-5112	AIR OPERATIONS		
Lead Ops	Jim Durrwachter	229-561-3477	AOBD	Timothy Faust	702-271-6055
Lead Ops (t)	Larry Smith	337-526-0128	Deputy AOBD	Brad Bernardy	601-540-6528
Planning Ops	Steve Weaver	828-360-2476	ATGS	Chris Worrell	850-447-4597
Planning Ops	Dave Walker	401-536-4047	ATGS	Mark Nunez	805-975-5227
Planning Ops (t)	Mike Davis	936-219-7743	ATGS(t)	Derek Wheeler	530-355-3274
Planning Ops (t) On R&R	Jeremy Brand	256-589-5098	ATGS(t)	Mike Bot	623-696-8532
Planning Ops (t)	Beale Monday	928-699-5588	ASGS	John Mason	478-951-7319
Field Ops (t)	Shannon Bowman	850-490-0428	HEB2-Pogo	Marc "Boomer" Rudkin	307-287-0440
Branch I	Darrell Miller	520-604-7582	HEB1 - Lake City	Nate Alexander	406-491-0878
Division B	Tim Stiltner	904-210-6731	HEB1 (t) - Lake City	Angie Ruble	573-241-0604
Division C	Bert Plant	732-904-5935	SAFETY		
Division D	Joe Burgette	303-548-0854	Safety Officer	Mike Cook	205-272-2426
IA Group	Donnie Harris	252-475-8012	Safety Officer	Brad Lidell	812-583-5543
Road Maint Group	Rob Davis	252-548-4730	Safety Officer	Tony Rivers	318-771-1316
Branch I Night	Jamie Schwartz	540-903-7193	Safety Officer	Tommy Hawkins	706-676-7538
Division Night	Paul Mancuso	402-651-4068	LOGISTICS		
Division Night	Russell Copp	928-606-3820	Logistics Section Chief	John Smith	870-867-7254
Branch II			Logistics Chief East Camp	Michael Burchard	912-496-3116
Division G			Service Branch	Joe Walker	229-561-4378
Division H			Support Branch	John Bellemore	540-529-7697
Division I			Supply Unit	Teddy Messenger	270-784-0248
Division J			Ground Support Unit Leader	Pat Wright	803-295-2819
			Ordering Manager	Nina Gainey	205-243-8816
			Food Unit Leader	Andy Boggs	208-661-9451
Branch III	Ron Smith	601-466-7153	Security Manager	Tom Neal	618-201-2111
Division K	Sun Bear	505-908-0955	Medical Unit Leader	Fred Adler	479-238-6064
Division L	Sam Wefarian	580-380-9680	Communications Unit	24 Hour	912-637-5116
Division M/N	Brian Browning	828-200-0102	Communications Unit Ldr	Jerry Patrick	601-942-2786
Division O	Robert Thorp	719-207-0096	Communications Unit Ldr	Barry Stearns (t)	954-553-6544
IA Group	Donnie Harris	252-475-8012	INCM	Bill Atchley	530-320-7473
Structure Prot Specialist	Bill Kornrump	505-463-8412	East Camp Communications		470-366-6306
Structure Prot Specialist	Craig Robertson	505-353-7124			
Branch III Night	Robert Laeng	209-352-0432			
Division Night	Shane Sturgill	423-202-6567			
Division Night	Michael Cachero(t)	520-538-5382			
Branch IV	Steve Miller	386-937-0554			
Division A	James Rourkes	386-623-7137			
Division Z	Trent Ingram	229-726-0285			
Division Z	Joe Morris				
Division A Night	John Molve				
Division Z Night	Bryce Thomas				
Structure Group Night	Harold Kibbe	231-920-5085			
Refuge Advisor	Reggie Forcine	912-614-4041			
Florida Contingency	Keith Osteen				
FWS Contingency	Rocky Chesser	912-276-3232			
FFS Contingency	John Raulerson	386-292-5652			
FFS Contingency	Andy Lamborn	383-365-4441			
Stagging Mgr Bethea	Adam Dummer	831-238-0991			
Ver 13May17pm					



HEALTH AND SAFETY MESSAGE

“We don’t plan on luck to be safe, we plan on sound risk management and good decisions”....the Red Team

INCIDENT: West Mims Fire	DATE: Monday, May 15, 2017
Major Hazards & Risks: Initial Attack, WUI, Dehydration & Fire Behavior	
<p style="text-align: center;">Smooth is Fast</p> <p>Initial Attack: <i>Make sure to get a good size-up and thorough briefing. Determine travel routes, communications and rally points before you depart. Upon arrival, take time to adequately evaluate fire hazards, values at risk, and sound tactics before engaging.</i></p> <p>WUI: <i>Identify Wildland Urban Interface in existing fires and in initial attack areas. Size up WUI hazards – Take the time to read the IRPG pages 12-16.</i></p> <p>Dehydration: <i>Make sure you are drinking plenty of fluids. It’s recommended that sport drinks (e.g., Gatorade and Powerade) be mixed with water at a ratio of 1 part Gatorade to 3 parts water. Too much Gatorade/Powerade is not recommended.</i></p> <p>Fire Behavior: <i>The forecast shows continued fuels drying with continued low RH, slight increase in Temps and light winds tomorrow. There is no moisture in the forecast for the next week. With the lightning received Saturday, IA for the next couple of days is likely. Make sure LCES is in place before engaging in active fire and use sound operational tactics.</i></p>	
 <p style="text-align: center;">CleAr InsTructionS – Not</p>	<p style="text-align: center;">Fire Order of the Day:</p> <p><i>Give clear instructions and insure they are understood.</i></p> <ul style="list-style-type: none"> • Task = What is to be done • Purpose = Why it needs to be done • End State = How it should look when completed

Red Team Safety Officers: Brad, Mike, Tony, Larry & Ivan

INCIDENT SAFETY ANALYSIS 215a

West Mims Fire - Monday, May 15, 2017

8. Location	9. Hazard	6. Control or Abatement Action (Engineering, Administrative, PPE, Avoidance, Education, etc)
ALL	Helicopter Operations	<ul style="list-style-type: none"> ~ Helicopter operations should be used for priority missions. ~ Stay clear of all bucket drops when suppression actions are in place and allow 1 minute prior to re-entry. ~ Pilots or air supervisor ensure ground resources are clear before bucket drops. ~ Monitor A-G communications. ~ Follow aviation safety guidelines in IRPG and IHOG. ~ Ground resources advise pilot of local power lines and local visibility issues.
All	Train Traffic	<ul style="list-style-type: none"> ~Observe warning signs when crossing tracks. ~If no warning lights are posted, bring vehicle to a complete stop and check for incoming trains before crossing. ~Use caution when crossing tracks with low vehicles or trailers. ~Contact CSX to ensure awareness to fire resource locations.
A, B, C, D, O, Z, Contingency, IA	Power Utilities	<ul style="list-style-type: none"> ~ Notify all personnel of down electrical lines. ~ Refer to the IRPG page 24 for Power Line Safety. ~ Always treat downed wires as energized. ~ Identify and avoid high tension transmission lines. ~ In high winds or areas of dense smoke, avoid areas under power lines. ~ Be aware of utility restoration in your work area.
ALL	Air Operations	<ul style="list-style-type: none"> ~ Follow " Aviation Watch-Out Situations" on page 44, IRPG. ~ Don't plan on air resources for medical transport or resupply. ~ Ensure positive communication with all air resources. ~ Ensure communications are established with operators. ~ During airtanker operations clear the drop zone before approach of the lead plane.
All	Structure Protection & HAZMAT	<ul style="list-style-type: none"> ~ Review "Wildland Urban Interface" Watch outs, IRPG page 12. ~ Use "Structure Assessment" checklist, IRPG pages 13-15. ~ Follow "HAZMAT Incident Operations" on pages 34-36 in IRPG. ~ Identify and avoid damaged gas service near structures.
B, C	Logging Operations	<ul style="list-style-type: none"> ~Stay clear of active cutting operations. ~If re-burns occur, stop cutting operations before entering the area. ~Use caution when logging equipment is in the area or traveling on the roads. ~Maintain communication with logging operation during operational period.
ALL & ICPs	Driving & Traffic	<ul style="list-style-type: none"> ~ Practice "Defensive Driving" techniques traveling on all roads and city streets. ~ Use spotters when backing. ~ Honk horn to alert personnel when backing. ~ Keep clutter off dash and inside cab. ~ Follow Driving LCES (Lights, Chock blocks, Emergency brake, Seat belts. ~ Always use headlights. ~ Yield to pedestrians and bicycles. ~ Observe posted speed limits. ~ Use the 3 second rule for following distance when driving. ~ Use chock blocks, turn wheels into hill. ~ Avoid distractions (eating, cell phones, radio). ~ Ensure that windshields are kept clean of dust and bugs. ~Use caution when traveling on roads that are impacted by smoke or dusty conditions. ~When feasible, coordinate travel to and from the hotels to ensure two or more personnel travel together to mitigate long distances.
ALL	Hazard Trees	<ul style="list-style-type: none"> ~ Follow "Hazard Tree Safety" guidelines, IRPG page 22. ~ Post lookouts, or use a spotter in mop-up areas with personnel. ~ Don't park vehicles or take breaks in high concentrations of hazard trees. ~ Establish trigger points for disengagement during high wind events. ~ Remember that the hazard zone extends a minimum of 2 1/2 tree heights. ~ When working in bay areas, be aware of cypress trees. There are reports of them beginning to fall, due to burned out root systems.
ALL	Fireline Hazards	<ul style="list-style-type: none"> ~ Establish and continue to validate LCES. ~ Avoid radiant heat by wearing appropriate PPE correctly. ~ Use correct tool for task assigned. ~ Follow power line safety protocol as outlined on page 22 in IRPG. ~ Flag and isolate all HAZMAT and alert all personnel working in Division. ~ Follow WUI recommendations on pages 10-11 in IRPG.

INCIDENT SAFETY ANALYSIS 215a

ALL	Injury & Medical Emergency	<ul style="list-style-type: none"> ~ Assist injured employee and provide appropriate medical care. ~ Use EMT's on Division for initial care. ~ Follow medical protocol as outlined in ICS-206 & IRPG Pgs 99-108
ALL	Firing Operations & Devices	<ul style="list-style-type: none"> ~ Only personnel trained in the use of each device will be authorized to use firing equipment. ~ Ensure all personnel are aware of firing operation that may affect them. ~ Wear appropriate PPE. ~ Ensure aerial/ground ignition plans have been adequately developed and personnel are briefed.
ALL	Communications	<ul style="list-style-type: none"> ~ Maintain communication with aviation resources, and suppression organization. ~ Ensure all know frequency and protocol for contacting resources. ~ Use clear terminology, ask questions and ensure good understanding, especially with new resources. ~ Utilize the ICS 205. ~ Utilize human repeaters when working in dead spots. ~ Know who you will contact in case of an emergency and practice the IWI protocol and 9 Line
ALL	Heavy Equipment Operations	<ul style="list-style-type: none"> ~ Ensure communications are established with operators. ~ Use hand signals if other communications are unavailable. ~ Maintain a 50'-100' exclusion area around equipment and increase it to 1 1/2 times tree height when in timber. ~ Use a spotter when backing.
ALL	Poisonous Plants	<ul style="list-style-type: none"> ~ Identify and Avoid hazard areas. ~ Launder clothing. ~ Shower frequently.
ALL	Night Operations	<ul style="list-style-type: none"> ~ Maintain high visibility in work area and wear vest while in roadway. ~ Use glow sticks to mark hazards. ~ Ensure personnel have a personal light (headlamp) and red strobe to ensure visibility. ~ Watch for signs of fatigue. ~ Take breaks away from areas of known hazard.
ALL	Indirect Fire line	<ul style="list-style-type: none"> ~ Post lookouts, identify escape routes and safety zones (IRPG pg. 6). ~ Review "Strategy/Indirect Attack" (IRPG pg. 77).
ALL	Wildlife	<ul style="list-style-type: none"> ~ Watch out for wildlife inside fire area and along roadways including bears, alligators, snakes, hogs, and deer. ~ Clean up all debris and trash during each operational period. ~ Don't feed or harass the animals.
ALL	ATV/UTV use	<ul style="list-style-type: none"> ~ Ensure equipment is inspected and safe to use ~ Restrict UTV's to max width of 50" on ATV trails due to width and severe outsloped conditions. ~ Ensure operator is trained and certified to operate. ~ Ensure operator has proper PPE according to the Red Book and/or RMA. ~ At a minimum a hardhat should be worn at all times. If your agency requires more advanced helmets and protection, follow your agency policy.
ALL	Fog	<ul style="list-style-type: none"> ~ Obey posted speed limits at all times. Visibility may be limited to 1/2 mile in areas. ~ If driving in a convoy, maintain a safe distance between vehicles for emergency stops and distance. ~ Don't use high beam lights while driving, it can impair the vision of the driver and oncoming traffic.
ALL	Bees, Ticks, Mosquitoes, Spiders, Chiggers	<ul style="list-style-type: none"> ~ Canvas crew members for those with known allergic reactions to stings. ~ Ensure crew members have medication pens if needed. ~ Perform daily self inspection. ~ Use repellent as necessary. ~ Advanced Life Support, multi-dose epi and airway protection ~ Keep affected area clean and bandaged. ~ Be extra careful wen eating and/or drinkiing to avoid stings to mouth and throat.

MEDICAL PLAN (ICS 206 WF)

Incident/Project Name		1. Operational Period					
West Mims Fire		Date/Time 5/15/2017 0730hrs to 0730 hrs					
2. Ambulance Services							
Name	Complete Address	Phone	Advanced Life Support (ALS)				
Clinch County EMS	1050 Valdosta Highway Homerville GA	911	YES				
Charelston County EMS	321 Georgia Ave. St. George, GA	911	YES				
3. Air Ambulance Services							
Name	Phone	Type of Aircraft & Capability					
Air Methods	888-763-1010	AS 350 With night vision capabilities					
Air Evac	888-269-6006	206 L1+ With Night Vision capability					
Trauma 1	800-223-4878	Bell 407 & EC153 both with night vision capability					
4. Hospitals							
	DD° MM.MMM' N - Lat DD° MM.MMM' W - Long	Travel Time Air Gnd		Phone	Helipad Yes No	Level of Care Facility	
Satilla Regional 410 Darling Ave. Waycross GA 31501	Lat: N 31° 13.452	15 mins	45 mins	912-283-3030	<input checked="" type="checkbox"/>	<input type="checkbox"/>	Level III
	Long: W 82° 20.875						
	VHF:						
Clinch Memorial 1050 Valdosta Hwy Homerville GA 31634	Lat: N 31° 01.975	20 mins	30 mins	912-487-5211	<input checked="" type="checkbox"/>	<input type="checkbox"/>	Level IV
	Long: W 82° 45.850						
	VHF:						
Ed Frazier Hospital 159 N. 3 rd St. MacClenny FL 32063	Lat: N 30° 28.482	15 mins	45 mins	904-259-3151	<input checked="" type="checkbox"/>	<input type="checkbox"/>	Level IV
	Long: W 82° 11.896						
	VHF:						
Shands Jacksonville 655 West 8 th Str Jacksonville FL 32209	Lat: N 30° 20.890	45 mins	90 mins	904-383-1015	<input checked="" type="checkbox"/>	<input type="checkbox"/>	Level I Burn Center Level I Trauma Center
	Long: W 81° 39.862						
	VHF:						
5. Division Branch Group Area Location Capability							
Division A		Paul Pugh	EMPF	(602)376-9812			
Division B		Martin Carillo	EMPF	(619)933-5546			
Division C,D		Gary Allen Ford	EMPF	(470)532-8807			
Division M,N		Lionel Van Gurp	EMPF	(928)235-7059			
Division O		Dean Carpenter	EMPF with UTV	(229)561-4224			
Division Y		Penny McDonagh	EMPF	(470)366-6301			
Division Z		Stan Bangs	EMPF	(602)980-6108			
Branch 1 Amb./ 24 hr.		Clinch Co. EMS		(470)-532-8806			
Branch 3 Amb./24hr.		Golden Isles		(912)602-9224			

IWI IC Responsibilities:

- Take charge of the scene – inform the Division Supervisor and Communications that you are the IWI IC and establish radio communications (frequencies, channels). Identify the emergency name – Division A medical, Fish Meadows medical, Highway 21 accident.
- Assign or begin patient assessment (9 Line) and first aid. Request additional medical resources on division/branch or across incident. Transmit 9 Line patient information to Communications.
- Determine patient transportation through consultation with line medical personnel and Medical Unit Leader. Consider transportation time, risk to personnel, destination facility and available operational resources. If air transport is chosen, implement the plan for alternative transportation in the event aircraft cannot complete the mission. Order transportation resources through Communications as early as possible.
- Notify Communications as resources arrive and any patient status changes. Names of injured or deceased individuals will not be transmitted on the radio.
- Initiate documentation for future investigation; if a line safety officer is available, assign them to lead documentation. Do not move deceased individuals, gear or personal effects except to accomplish rescue work or protect the safety of others. Obtain written documentation of witnesses. The Unit Log, ICS 214, may be used for the initial documentation, but a subsequent narrative will be required.
- As appropriate, conduct an After Action Review to determine successes, areas to improve and lessons learned.

6. Prepared By (Medical Unit Leader)	7. Date/Time	8. Reviewed By (Safety Officer)	9. Date/Time
Fred Adler MEDL/ Matt Laricos MEDL(T)	5/14/2017	Brad Lidell SOF	5/14/2017



National Police Week 2017: May 15 - 21

National Police Week was signed into creation by President John F. Kennedy in 1962. May 15 is designated as Peace Officer Memorial day and the week of May 15 is designated as Police Week. Law enforcement officers from various agencies across the country pay honor to those who have paid the ultimate sacrifice in the line of duty

**Thank your law enforcement officers and
remember their sacrifices.**



Finance Notes

The following resources need to see equipment time:

E-538 - Boulder County Sheriff

Notes for All Resources:

- **Submit** CTRs and/or shift tickets **daily**. Ensure that each is dated, signed by the incident supervisor, and includes your name (or the identification information for your equipment).
- **Include** your request number (i.e., E-1, O-1, C-1) on CTRs and shift tickets. For shift tickets, put the number in the upper right hand corner.
- **Record** meal breaks taken during your operational period, with a minimum of one during each shift. If no meal break is recorded, justification must be included in remarks.
- **Document** the reason for Hazard Pay or other differential (i.e., Environmental Pay) in remarks. The most common reasons for Hazard Pay are:
 - Helicopter ground operations under hovering helicopter (attaching slingloads)
 - Uncontrolled fireline duty (line construction, patrol, mop up, felling, etc).
*(This **does not** include non-suppression activities, e.g., media tours, incident personnel driving to the fire to observe activities, and drivers delivering tools or personnel.)*
 - Limited control flights
- **Document and mitigate excessive shifts:** If you must work more than 16 hours in an operational period, record why in remarks. In succeeding shifts, show that you mitigated the fatigue by taking off one hour for each two that you worked over 16.

DEMOB LIST

05/15/2017

EQUIPMENT

E-157		(ENG6)	ENG6 – OSCEOLA – 641
E-263		(ENG6)	ENG6 – SCHOLL FIRE & FULES

OVERHEAD

O-176	after shift	(DIVS)	CACHERO, MICHAEL
O-212	after shift	(FDUL)	BOGGS, ANDREW WILLIAM
O-256		(TFLD)	PASCARELLA, ANDREW S
O-276		(PIO2)	BAYSINGER, RITA
O-278	after shift	(DIVS)	MANCUSO, PAUL
O-281.39	after shift	(RCDM)	MEEKINS, LISA R
O-294		(ATGS)	BOT, MICHAEL
O-435		(DIVS)	CLAYTOR JR, ROBERT EUGENE
O-511		(TFLD)	TOMLINSON, KEVIN

05/16/2017

EQUIPMENT

E-118		(ENG6)	ENG6 COLQUITT 86 STEPHEN
E-296		(TPL3)	TPL3 WORTH 71-GFC4203318
E-297		(TPL4)	TPL4 TIFT 70-GFC3212
E-298		(TPL5)	TPL5 MILLER 71-GFC1018

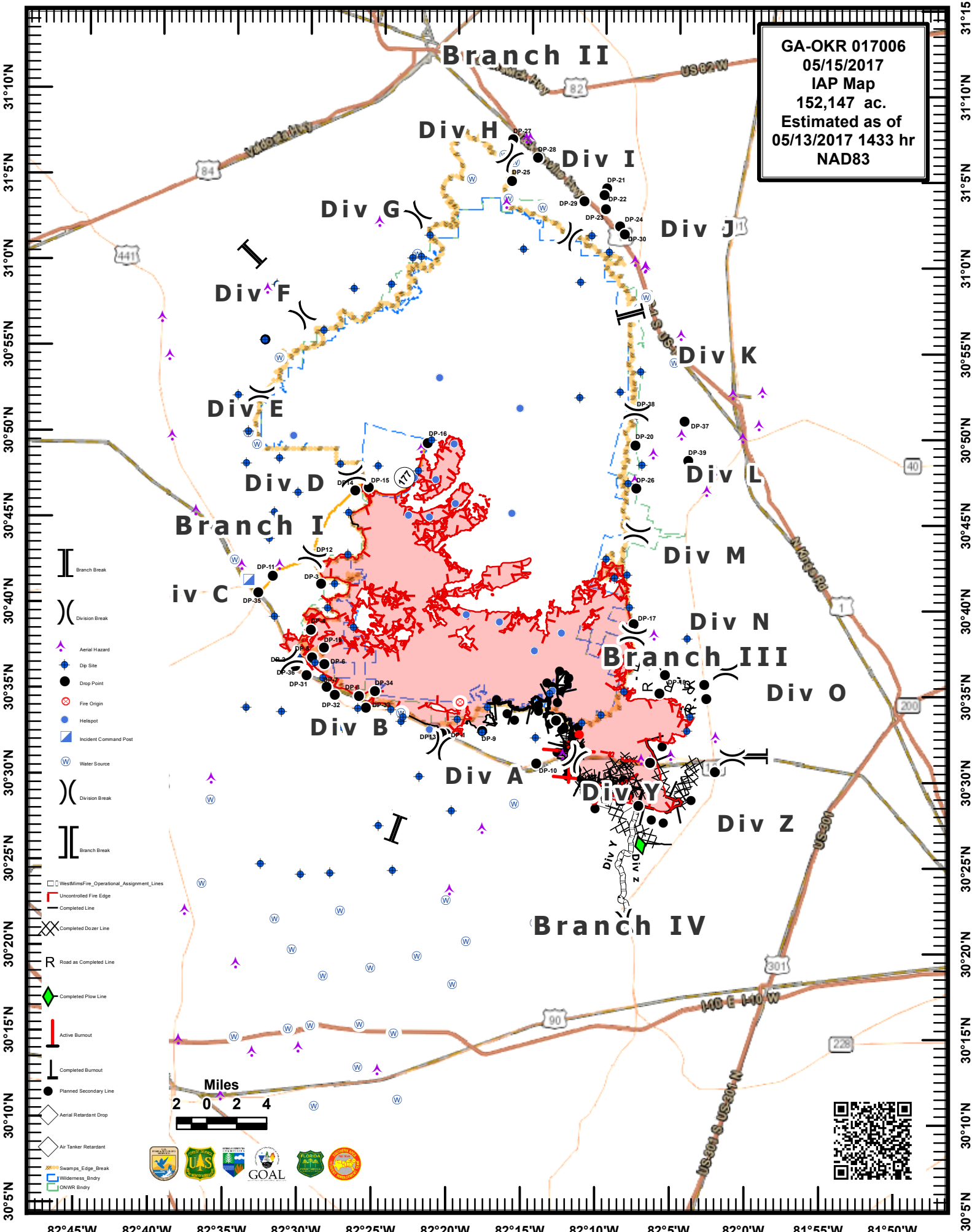
OVERHEAD

O-238		(PTRC)	STEELE, THOMAS H
O-275		(HEQB)	DANIELS, CHARLES
O-280		(RCDM)	GACEY, JIM
O-281.21		(SCKN)	SOBIESKI, SUE A
O-281.59		(SOF2)	PATTERSON, CHARLES E
O-288	after shift	(RADO)	FREY, ANTHONY T
O-295	after shift	(PIOF)	BANTON, MELANIE LYNN
O-302		(DIVS)	STILTNER, TIMOTHY PAUL
O-387		(HECM)	ODEGARD, DERRICK

IF YOU ARE TO FLY HOME PLEASE CONTACT DEMOB AT LEAST 3 DAYS BEFORE FLIGHT TIME.

PHONE # 1-912-637-5113 EMAIL demobwestmimsfire@gmail.com

GA-OKR 017006
05/15/2017
IAP Map
152,147 ac.
Estimated as of
05/13/2017 1433 hr
NAD83



31°10'N
31°5'N
31°0'N
30°55'N
30°50'N
30°45'N
30°40'N
30°35'N
30°30'N
30°25'N
30°20'N
30°15'N
30°10'N
30°5'N

31°15'N
31°10'N
31°5'N
31°0'N
30°55'N
30°50'N
30°45'N
30°40'N
30°35'N
30°30'N
30°25'N
30°20'N
30°15'N
30°10'N
30°5'N

MEDICAL PLAN (ICS 206 WF)

FOR ALL MEDICAL EMERGENCIES: IDENTIFY ON SCENE INCIDENT COMMANDER BY NAME AND POSITION AND ANNOUNCE "MEDICAL EMERGENCY" TO INITIATE RESPONSE FROM IMT COMMUNICATIONS/DISPATCH.

Use items one through nine to communicate situation to communications/dispatch.

1. CONTACT COMMUNICATIONS/DISPATCH

Ex: "Communications, Div. Alpha. Stand-by for Priority Medical Incident Report." (If life threatening request designated frequency be cleared for emergency traffic.)

2. INCIDENT STATUS: Provide incident summary and command structure.

Nature of Injury/Illness		<i>Describe the injury (Ex: Broken leg with bleeding)</i>
Incident Name		<i>Geographic Name + "Medical" (Ex: Trout Meadow Medical)</i>
Incident Commander		<i>Name of IC</i>
Patient Care		<i>Name of Care Provider (Ex: EMT Smith)</i>

3. INITIAL PATIENT ASSESSMENT: Complete this section for each patient. This is only a brief, initial assessment. Provide additional patient info after completing this 9 Line Report.

Number of Patients:	Male / Female	Age:	Weight:
Conscious? <input type="checkbox"/> YES <input type="checkbox"/> NO = MEDEVAC!			
Breathing? <input type="checkbox"/> YES <input type="checkbox"/> NO = MEDEVAC!			
Mechanism of Injury: <i>What caused the injury?</i>			
Lat/Long (Datum WGS84) <i>Ex: N 40° 42.45' x W 123° 03.24'</i>			

4. SEVERITY OF EMERGENCY, TRANSPORT PRIORITY

SEVERITY	TRANSPORT PRIORITY
<input type="checkbox"/> URGENT-RED Life threatening injury or illness. <i>Ex: Unconscious, difficulty breathing, bleeding severely, 2° – 3° burns more than 4 palm sizes, heat stroke, disoriented.</i>	Ambulance or MEDEVAC helicopter. Evacuation need is IMMEDIATE.
<input type="checkbox"/> PRIORITY-YELLOW Serious Injury or illness. <i>Ex: Significant trauma, not able to walk, 2° – 3° burns not more than 1-2 palm sizes.</i>	Ambulance or consider air transport if at remote location. Evacuation may be DELAYED.
<input type="checkbox"/> ROUTINE-GREEN Not a life threatening injury or illness. <i>Ex: Sprains, strains, minor heat-related illness.</i>	Non-Emergency. Evacuation considered Routine of Convenience.

5. TRANSPORT PLAN:

Air Transport: (Agency Aircraft Preferred)

<input type="checkbox"/> Helispot	<input type="checkbox"/> Short-haul/Hoist	<input type="checkbox"/> Life Flight	<input type="checkbox"/> Other
-----------------------------------	---	--------------------------------------	--------------------------------

Ground Transport:

<input type="checkbox"/> Self-Extract	<input type="checkbox"/> Carry-Out	<input type="checkbox"/> Ambulance	<input type="checkbox"/> Other
---------------------------------------	------------------------------------	------------------------------------	--------------------------------

6. ADDITIONAL RESOURCE/EQUIPMENT NEEDS:

<input type="checkbox"/> Paramedic/EMT(s)	<input type="checkbox"/> Crew(s)	<input type="checkbox"/> SKED/Backboard/C-Collar
<input type="checkbox"/> Burn Sheet(s)	<input type="checkbox"/> Oxygen	<input type="checkbox"/> Trauma Bag
<input type="checkbox"/> Medication(s)	<input type="checkbox"/> IV/Fluid(s)	<input type="checkbox"/> Cardiac Monitor/AED
<input type="checkbox"/> Other (i.e. splints, rope rescue, wheeled litter)		

7. COMMUNICATIONS:

Function	Channel Name/Number	Receive (Rx)	Tone/NAC *	Transmit (Tx)	Tone/NAC *
<i>Ex: Command</i>	<i>Forest Rpt, Ch. 2</i>	<i>168.3250</i>	<i>110.9</i>	<i>171.4325</i>	<i>110.9</i>
COMMAND					
AIR-TO-GRND					
TACTICAL					

*(NAC for digital radio system)

8. EVACUATION LOCATION:

Lat/Long (Datum WGS84) <i>EX: N 40 42.45' x W 123 03.24'</i>	
Patient's ETA to Evacuation Location:	
Helispot/Extraction Size and Hazards:	

9. CONTINGENCY:

Considerations: If primary options fail, what actions can be implemented in conjunction with primary evacuation method? Be thinking ahead...

REMEMBER: Confirm ETA's of resources ordered
Act according to your level of training
Be Alert. Keep Calm. Think Clearly. Act Decisively.