



Incident Action Plan Day West Mims Fire

Operational Period
May 21, 2017
SUNDAY
0730-1930

QR for IAP



GA-OKR-017006

FWS FFF2000000KYJ70

USFS PRKYJ717_1502 (P)

NPS PFFSKJ7017.00.1

QR for Maps



Schedule

0730 Morning Briefing
1200 C & G
1500 Pre Planning Meeting
1700 Planning Meeting
1800 Night Briefing @ Bethea



INCIDENT OBJECTIVES (ICS 202)

1. Incident Name:	2. Operational Period: DAY SHIFT 0730-1930	
WEST MIMS	Date/Time From: 05/21/2017 0730 SUN	Date/Time To: 05/21/2017 1930 SUN
3. Objective(s):		
<ul style="list-style-type: none"> • Provide for the safety and security of incident personnel and public in all incident operations through sound risk assessment and hazard mitigations. • Maintain a positive working relationship with all adjacent landowners, cooperators State and Federal partners. Inform, involve and communicate incident planning and operations with all partners. • Confine all fires that are within the Okefenokee National Wildlife Refuge, inside the Refuge and/or inside the swamp edge break if possible. Aggressively suppress all fire outside the swamp edge boundary. • In cooperation with local timberland owners, use full suppression strategies and tactics to minimize damage to private timberlands and improvements and to prevent fires outside the Refuge from entering the Refuge. • Assist in management and suppression of additional fires (new starts or breakouts) in the vicinity as approved by Agency Administrators and Unified Incident Commanders. • Protect all cultural and archeological sites and structures within the refuge. • Manage the fires cost-effectively consistent with the values at risk. • Implement structure protection as necessary for at-risk facilities and communities. • Coordinate suppression actions with assigned Refuge Resource Advisors to protect endangered species. • Conduct all operations in a harassment-free environment. There will be a no tolerance atmosphere for harassment, alcohol, or illegal drug use. Everyone will be treated with dignity and respect. 		
4. Operational Period Command Emphasis:		
Branch IV Keep fire East of the North Prong of St Mary's river; West of Nassau county Florida; and North of Baker county Florida Branch III Keep fire North of Hwy 94, West of St Mary's River, and South of #19 road Keep fire within the Okefenokee Refuge Swamp Edge Break Boundary. Respond to initial attack fires on new starts within: *South of Suwannee Canal *Within the Okefenokee jurisdictional boundaries *Within state properties inside Perimeter Road		
General Situational Awareness:		
Utilize confine, contain, and point source protection strategies and tactics that commit operations personnel only where and when they can be successful, under conditions where important values at risk are protected with the least exposure.		
5. Site Safety Plan Required? Yes <input type="checkbox"/> No <input checked="" type="checkbox"/>		
Approved Site Safety Plan(s) Located at:		
6. Incident Action Plan (the items checked below are included in this Incident Action Plan):		
<input checked="" type="checkbox"/> ICS 202 <input checked="" type="checkbox"/> ICS 203 <input checked="" type="checkbox"/> ICS 204 <input checked="" type="checkbox"/> ICS 205 <input type="checkbox"/> ICS 205A <input checked="" type="checkbox"/> ICS 206	<input type="checkbox"/> ICS 207 <input checked="" type="checkbox"/> ICS 208 <input checked="" type="checkbox"/> ICS 220 <input checked="" type="checkbox"/> Map/Chart <input checked="" type="checkbox"/> Weather Forecast/Tides/Currents	Other Attachments: <input checked="" type="checkbox"/> PIO MESSAGE <input checked="" type="checkbox"/> FINANCE MESSAGE <input checked="" type="checkbox"/> TENTATIVE DEMOB <input checked="" type="checkbox"/> MAP
7. Prepared by: BRIAN ELDREDGE Position/Title: PSC1	Signature:	
8. Approved by Incident Commander:	Name: MIKE DUEITT	Signature:
ICS 202	IAP Page	Date/Time: 05/20/2017 2000

ORGANIZATION ASSIGNMENT LIST (ICS 203)

1. Incident Name:		2. Operational Period: DAY SHIFT 0730-1930	
WEST MIMS		Date/Time From: 05/21/2017 0730	SUN Date/Time To: 05/21/2017 1930 SUN
3. Incident Commander(s) and Command Staff:		GIS SPECIALIST KEVIN WINTER	
IC/UC	MICHAEL DUEITT MIKE GOICOECHEA (T)	INCIDENT METEOROLOGIST	JOE GOUDSWARD
SAFETY OFFICER	BRAD LIDELL; MICHAEL COOK; IVAN CUPP, CLAY STEPHENS (T)	FIRE BEHAVIOR ANALYST; AIR RESOURCE ADVISOR	GARY JARVIS; KELLY CAGLE, MATT FILBERT (T) DAN BYRD; THSP-ARA
INFORMATION OFFICER	CATHERINE HIBBARD; BONNIE STRAWSER; MICHAEL DAVIS (T)	6. Logistics Section:	
LIAISON OFFICER	JD LEE, KEITH LAWRENCE PAUL STEVENS	CHIEF	JOHNNY SMITH
4. Agency/Organization Representative(s):		LOGS CHIEF EAST	MICHAEL BURCHARD HARV SKJARVEN
Agency/Organization	Name	SERVICE BRANCH DIRECTOR	JOE WALKER
GFC PROTECTION	FRANK SORRELLS	SUPPORT BRANCH DIRECTOR - NIGHT	JOHN BELLMORE
OKE REF MGR/ASSIST	MICHAEL LUSK; SARA CLARDY	SUPPLY UNIT	TEDDY MESSENGER - W RON ZABKA - E
OKE REF FMO	REESE KERBOW	FACILITIES UNIT	KEITH PLAGEMANN
GOAL	JIM BARRETT	GROUND SUPPORT UNIT	PATRICK WRIGHT; CHARLES WEATHERS - WEST MIKE NELSON - EAST
FLDOF	JOHN RAULERSON	COMMUNICATIONS UNIT	JERRY PATRICK;
GEMA	DIANE ADAMS	MEDICAL UNIT	RICH DORAZIO - WEST MATTHEW LARICOS (T) - EAST
NORFOLK SOUTHERN	CHAD EDWARDS	COMT	KELLY TOWE; ROGER MENARD - WEST STEVEN LANDON - EAST
CLINCH CO EMA	WILL JOYCE; RANDY PATTEN	FOOD UNIT	JIM LOWE
GADOT	TREVOR BROWN	ORDM	TAMARA KLINDT
CHARLTON CO EMA	BRUCE YOUNG	RCDM	JAKE CLEVENGER
NCFS	GREG SMITH	EQPM	KIRBY HENNINSSSEN; JASON MCHAN; JIM GACEY
NASSAU COUNTY EMS	BILLY E STEP	RADO	
5. Planning Section:		JOHN BETHEA STAGING AREA - BCMB (DAY)	RAY GONZALAS JAWANA STEPHENS (T)
CHIEF	BRIAN ELDREDGE TERRY PIERCE	JOHN BETHEA STAGING AREA - BCMG (NIGHT)	BEN REICK
PSC2	JASON BRAUNSTEIN (T)	JOHN BETHEA STAGING AREA - STAM	ADAM DRUMMER
RESOURCES UNIT	MISSY FORDER; DONNA THOMAS; TIFFANY PATE SCOTT WELLS; TOM WINSHIP; JEFF TURNER (T)	JOHN BETHEA STAGING AREA - EQMG	JOHN STRONG
STATUS CHECKIN	CARLA ROBERTS JESSICA VALDEZ SHANEEN MOORE (T), BRANDEN TOLVER (T)	JOHN BETHEA STAGING AREA CAMP CREW BOSS	JUWANNA SAMPSON
SITUATION UNIT	TERRY BOWERMAN	7. Operations Section:	
DEMOBILIZATION UNIT	KAREN DAVIS, DAVID BROWN DALE WINE (T)	OPS SECTION CHIEF	JIM DURRWACHTER; LARRY SMITH (T) SHANNON BOWMAN(T), BEALE
DOCUMENTATION UNIT	JAN FLEMING		
ITSS	TONY FARMER, CORY NICOLSON TERRANCE CHAPLIN (T)		
TRAINING SPECIALIST	LARRY MOORE, JR BRAD STEWART		
GIS SPECIALIST	ANDREW THOMPSON, DAVID JONES; CLINT ROBERTS		
9. Prepared By:	Name: DONNA THOMAS	Position/Title: RESL	Signature:
ICS 203	IAP Page	Date/Time: 05/20/2017 2000	

ORGANIZATION ASSIGNMENT LIST (ICS 203)

1. Incident Name:		2. Operational Period: DAY SHIFT 0730-1930	
WEST MIMS		Date/Time From: 05/21/2017 0730	SUN
		Date/Time To: 05/21/2017 1930	SUN
OPS SECTION CHIEF MONDAY (T)		DIVISION/GROUP	L
PLANNING OPS (BRANCH I)	STEVE WEAVER PHIL DANIELS (T), JEREMY BRAND (T)	DIVISION/GROUP	M
PLANNING OPS (BRANCH III AND IV)	MARK CRAIN MICHAEL DAVIS (T)	DIVISION/GROUP	N
SWING SHIFT OPS SECTION CHIEF (BRANCH I, III, IV)	JAMES SCHWARTZ	DIVISION/GROUP	O
Branch	I	DIVISION/GROUP	STAGING
BRANCH DIRECTOR DAY	RON GARCIA	DIVISION/GROUP	STRUCTURE PROTECTION
BRANCH DIRECTOR NIGHT	LANCE DELGADO	DIVISION/GROUP	
DIVISION/GROUP	DIV B	TIM STILTNER; RONNIE RUCKER KEITH FIELDS (T)	
DIVISION/GROUP	DIV C	BERT PLANTE PAUL AMUNDSON (T)	Branch IV
DIVISION/GROUP	DIV D	JOEL BURGETT; HEATHER GRIFFIN	PLANNING OPERATIONS CHIEF
DIVISION/GROUP	DIV E	GREG TOLL	BRANCH DIRECTOR
DIVISION/GROUP	DIV F	SHELLY CROOK CASEY O'CONNOR (T)	NIGHT BRANCH DIRECTOR
DIVISION/GROUP	FL FFS CONTINGENCY	GLEN DAVIS; JOHN RAULERSON	DIVISION/GROUP
DIVISION/GROUP	WEST ROAD MAINTENANCE	CANDICE KUTROSKY	DIVISION/GROUP
DIVISION/GROUP	SWING SHIFT	SHANE STURGILL BRYCE THOMAS	DIVISION/GROUP
			DIVISION/GROUP
Branch	II		
BRANCH DIRECTOR	NATE GOGNA	7b. Air Operations Branch:	
DIVISION/GROUP	J	AIR OPS BRANCH DIRECTOR	TIM FAUST
DIVISION/GROUP	DIV H/I	AIR SUPPORT GROUP SUPERVISOR	JOHN MASON
		AIR TACTICAL GROUP SUPERVISOR	MARK NUNEZ, KEN MCLAUGHLIN
Branch	III	HEB1 POGO	MARC RUDKIN
PLANNING OPERATIONS CHIEF	MARC CRAIN MIKE DAVIS (T)		
BRANCH DIRECTOR	RON SMITH		
BRANCH DIRECTOR NIGHT	ROBERT TRINCADO SCOTT THOMAS (T)		
DIVISION/GROUP	IA	GREGG BUCKALEW ARTURO GASDIK (T)	
DIVISION/GROUP	K	SUNBEAR VIERRA TOM ALLBRIGHT (T)	
8. Finance/Administration Section:			
		CHIEF	BONNY JOHNSON
		DEPUTY	JAMES MEREDITH
		PROCUREMENT UNIT	P. J. VILHAUER CRAIG ERICSON (T)
9. Prepared By:	Name: DONNA THOMAS	Position/Title: RESL	Signature:
ICS 203	IAP Page	Date/Time: 05/20/2017 2000	

ORGANIZATION ASSIGNMENT LIST (ICS 203)

1. Incident Name:		2. Operational Period: DAY SHIFT 0730-1930	
WEST MIMS		Date/Time From: 05/21/2017 0730 SUN	Date/Time To: 05/21/2017 1930 SUN
CONTRACTING OFFICER	THERESA HOOD		
EQUIPMENT TIME RECORDER	SONYA YARA, TAMMY RUSSELL RANDY TOTTON (T)		
COST UNIT	CAROLYN DETWILER; JENNY CROSS (T)		
TIME UNIT	JEAN FRICK		
PERSONNEL TIME RECORDER	BECKY HOPKINS, TRISH KITSMILLER SARA RANDOLPH (T)		
COMPENSATION UNIT	VERMA COLEMAN		
9. Prepared By:	Name: DONNA THOMAS	Position/Title: RESL	Signature:
ICS 203	IAP Page	Date/Time: 05/20/2017 2000	



To: All Incident Personnel, West Mims Fire 2017

As the Unified Command Incident Commanders, we have a policy of “zero tolerance” of inappropriate behavior during incident operations. Any form of harassment, discriminatory practices, or disrespectful behavior will not be tolerated. Known or reported acts will be dealt with appropriately.

We are particularly concerned about the perception that alcohol has a place in any of the Incident facilities. It is not appropriate to indulge in alcoholic beverages during any fire assignment.

The National Team from the Southern Region has a policy of “NO ALCOHOL” from the time of dispatch until the time of physical release from the Incident. Members of the Team voluntarily comply with this policy; all incident personnel will be expected to do so also.

We endorse, support, and expect an attitude of mutual respect for all Incident personnel and the public we serve. We also, endorse the attitude and work ethic that places “Safety First, every time on every Incident.” We expect nothing less.

/s/ Mike Dueitt
/s/ Rick Dolan
/s/ Buck Kline
Incident Commanders



Fire Weather Forecast



FORECAST NO: 44
PREDICTION FOR: Sunday Shift
SHIFT DATE: May 21, 2017
FORECAST ISSUED: 1800 May 20, 2017

NAME OF FIRE: West Mims Fire
UNIT: Okefenokee National Wildlife Refuge
Incident Meteorologist: Joe Goudsward 240-778-5279

DISCUSSION:

Another hot and humid day is expected across the incident. Scattered showers will be possible this morning with the precipitation becoming more numerous and widespread during the afternoon. Any thunderstorm will be capable of producing gusty and erratic outflow winds, locally heavy downpours and lightning. General winds will be from the SE once again with some higher gusts expected during the afternoon hours and early evening hours. Overnight temperatures will be up a little bit and expected to bottom out in the lower 70s

SUNDAY (SUNDAY DAY SHIFT):

- WEATHER: Patchy ground fog possible early, otherwise partly to mostly cloudy. Showers possible in the morning, showers and thunderstorms becoming more widespread and numerous in the afternoon.
- WIND (20 FT): SE 6 to 10 mph. Gusts up to 15 mph in the afternoon.
- MAX TEMPERATURES: 89-94
- LAL: 4
- MIXING HEIGHT: 5500
- CHANCE OF RAIN: 70%
- RAINFALL: .50" to .75"
- MIN RH: 45-50%
- DISPERSION (MAX): 40
- TRANSPORT WINDS: SSE 12 mph

TONIGHT (SUNDAY NIGHT SHIFT):

- WEATHER: Partly cloudy to mostly cloudy. A chance of showers through the night. Thunderstorms possible before midnight.
- WIND (20 FT): SE 5 to 10 mph in the evening with a few gusts near 15mph early. Winds decreasing to 3 to 6 mph by morning.
- MIN TEMPERATURES: 70 to 75
- LAL: 2
- MAX RH: 95-100%
- CHANCE OF RAIN: 50% ➡ 20%
- MAX LVORI: 10
- RAINFALL: .25"

HOURLY WEATHER FORECAST (LST) Sunday 1000 through Monday 0800

Time	1000	1200	1400	1600	1800	2000	2200	2400	0200	0400	0600	0800
Temp °F	82	88	91	91	88	83	77	75	73	71	70	72
RH %	69	58	54	47	50	58	70	83	87	94	100	97
Wind Dir	SE	SE	SE	SE	SE	SE	SE	SE	SE	SE	SE	SE
Wind Spd mph	5	5	7	8	9	9	8	6	4	3	3	3
Wind Gst mph	9	9	10	10	12	12						
Rain Chance%	20	40	60	70	70	50	30	30	20	20	20	20
Weather	Shwrs	Tstms	Tstms	Tstms	Tstms	Tstms	Tstms	Shwrs	Shwrs	Shwrs	Shwrs	Shwrs

MONDAY:

- WEATHER: Mostly cloudy with scattered showers and thunderstorms.
- WIND (20 FT): E 6 to 10 mph with gusts near 15.
- MAX TEMPERATURES: 85-90
- LAL: 4
- MIXING HEIGHT: 5100
- MIN RH: 44-49%
- DISPERSION (MAX): 40
- TRANSPORT WINDS: SE 10 mph
- CHANCE RAIN: 70%
- RAINFALL: .25" to .50"

Sunrise Sunday: 6:32 am **Sunset Sunday: 8:21 pm** **Sunrise Monday: 6:32 am**
Thunderstorms imply gusty and erratic winds, locally heavy rain and lightning

RAWS Observations:

Jones
Island



Eddy
Tower



OKE
East



OKE
NW



FIRE BEHAVIOR FORECAST	
FORECAST NUMBER: #34	TYPE OF FIRE: Wildland
FIRE NAME: West Mims	OPERATIONAL PERIOD: 05/21/2017 Day Operational Period
DATE ISSUED: 05/20/2017	TIME ISSUED: 1800
UNIT: Okefenokee National Wildlife Refuge	WRITTEN: Kelly Cagle FBAN (t) Signed: Gary Jarvis FBAN 336-302-0343 251-288-1084

FUEL ASSUMPTIONS: The major fuel types found in the West Mims Fire are fuel model SH3 (Brush), Fire Behavior Prediction System Fuel model 7 (Southern Rough) and fuel model 8 (Timber litter). High risk fuels include pine plantations with palmetto/gallberry understory (FM7). Current fuel conditions are favorable for very active fire behavior within all fuel types. Expect all fuels to burn readily, including those that appear green. Reburn will occur in areas where needle cast from scorch has occurred.

WEATHER SUMMARY: Patchy ground fog early, otherwise partly to mostly cloudy. Showers possible in the morning. Showers and T-storms becoming more widespread in the afternoon.
 WIND (20 FT): SE 6 to 10 mph with gusts to 15 in the afternoon.
 MAX TEMPERATURES: 89-94 MIN RH: 45-50%
 LAL: 4 CHANCE OF RAIN: 70% AMOUNT: .50" to .75" MAX DISPERSION:40
 MIXING HEIGHT:5500 TRANSPORT WINDS: SSE 12 mph

General Fire Behavior Forecast: Drought conditions persist across the fire area. Live fuel moistures continue to be low making the live shrubs and trees available to burn. Fire will easily spread into the canopy when ladder fuels are present; expect long range spotting when this occurs. Be very cautious when critical fire behavior thresholds are exceeded as fires will become very resistant to control with ground resources alone. Aerial resources will be required. Potential exists for rapid development and growth on any new starts unless precipitation is received.

Critical fire behavior thresholds:
 Temp >90°, RH < 40%, Dispersion index greater than 60

Specific: Branch 1 and 2 (west side)-Continued east winds could push fire activity from reburn and ground fire towards containment lines. If fuel conditions continue to dry, expect swampy areas that did not burn to heat back up.
 -Branch 3 and 4 (east side) - Potential for re-burn continues. Unburned pockets of interior fuels could begin to consume as well. Dozer berms, silviculture piles and other heavy's will continue to hold heat and be a potential spot producer.
 -Initial Attack could have increased activity. New fires have potential to develop quickly. Those divisions with ongoing salvage logging should consider initial attack potential from that equipment.

Fuel Type	Rates of Spread	Flame Length	Spotting Distance	Probability of Ignition	Torching / Crowning Potential / Flame Lengths
20' winds @ 8 and 12mph					
Southern Rough(pine w/palmetto/gallberry)	20-33 ch/hr.	6-8 feet	.2 mile	53%	Torching likely with 12 mph gust
Timber Litter (pine litter reburn)	2-3 ch/hr.	1-2 feet	100 feet	53%	Minor torching in shrub
Brush (Swamp)	6-9 ch/hr.	3-6 feet	.2 mile	53%	Possible torching if canopy exists

Calculated 1 hour fine dead fuel moisture: 7% 10 hour fuel moisture: 9% 100 hour fuel moisture: 15

AIR OPERATIONS: Patchy fog and low clouds could impact aviation early. Thunderstorms could impact operations late.

FIRE BEHAVIOR SAFETY: LAL of 4 today means lightning is likely. Florida leads the nation in lightning related incidents. Do not chance it – take cover when storms approach.

Reference: 1 chain = 66 feet, 20 chains = .25 mile, 40 chains = .50 mile, 60 chains = .75 mile, 80 chains = 1 Mile

IA Protocol

- Determine LAT/LONG.
- Notify OSC and/or OPBD.
- OSC/OPBD will notify Unified IC's for approval to assist with ground or aviation resources.

In Georgia:

Southern Response Dispatch (229) 386-3846

If no contact-Buck Kline (912) 678-2694

In Florida-

Lake City (Baker, Columbia, and Hamilton Counties): (386) 243-6243

Jacksonville (Nassau County): (904) 266-8351

If no contact-Rick Dolan (352) 353-5101

For OKR-

Brantley Boatright Dispatch (912) 496-7366 x 230
or (912) 276-0023

Division/Group Assignment List (ICS 204 WF)

1. Incident Name:				3.			
WEST MIMS				I		B	
2. Operational Period: DAY SHIFT 0730-1930							
Date/Time From: 05/21/2017 0730 SUN		Date/Time To: 05/21/2017 1930 SUN					
4. Operations Personnel							
PLANNING OPERATIONS CHIEFS		STEVE WEAVER, JEREMY BRAND (T) PHIL DANIELS (T)		OPERATIONS CHIEF		JIM DURRWACHTER L. SMITH (T); S. BOWMAN (T)	
BRANCH DIRECTOR		RON GARCIA		DIVISION/GROUP SUPERVISOR		TIM STILTNER RONNIE RUCKER, KEITH FIELDS (T)	
SAFETY		BRAD LIDELL; MIKE COOK CLAY STEPHENS (T)		AIR TACTICAL GROUP SUPERVISOR		MARK NUNEZ, KEN MCLAUGHLIN	
5. Resources Assigned this Period							
Strike Team / Task Force / Resource Designator		LWD	Leader	Number Persons	Drop Off PT./Time	Pick Up PT./Time	
ENG6 SOUTHEAST FOREST RESOURCES E-58		05/30	HAWTHORNE	3	ICP/0730	ICP/1930	
ENG6 - NC-POR PLE1 E-2		05/21	ANTHONY DAVIS	2	ICP/0730	ICP/1930	
ENG6- SMR #4461 E-1		05/26	MEGAN BIEBER	2	ICP/0730	ICP/1930	
ENG6 - AR-OZF - PH - E-641 E-76		05/21	MIKE KOCH	3	ICP/0730	ICP/1930	
ENG6 - WILDLANDS FIRE SERVICE - D65331 - 1 E-144		05/24	MICHAEL MADISON	2	ICP/0730	ICP/1930	
ENG6 - NMSNF - JEMEZ RD - ENGINE 631 E-763		05/29	KARL KEEMAN	6	ICP/0730	ICP/1930	
WTS1- SUPPORT WILDLANDS FIRE SERVICE I E-132		05/30	CARSON SWEENEY	1	ICP/0730	ICP/1930	
TFLD (T) O-701		05/30	TRAVIS CARSON	1	ICP/0730	ICP/1930	
STEN O-605		05/28	COURTNEY WENZEL	1	ICP/0730	ICP/1930	
STPS O-542		05/27	JAY T WALTER	1	ICP/0730	ICP/1930	
EMPF O-543 470-366-6301		05/26	PENNY MCDONAGH	1	ICP/0730	ICP/1930	
SOF2 O-252 208-954-4105		05/30	CHRIS CHURCH	1	ICP/0730	ICP/1930	
8. Division/Group Communication Summary							
Function	Channel	RX Frequency N/W	RX Tone/NAC	TX Frequency N/W	TX Tone/NAC	Mode	
AIR TO GROUND	4	169.2000N	NONE	169.2000N	NONE	A	
COMMAND	8	159.2700N	156.7	151.1000N	123.0	A	
TACTICAL	13	159.4125N	NONE	159.4125N	NONE	A	
AIR TO GROUND	14	166.6750N	NONE	166.6750N	NONE	A	
AIR TO GROUND	15	169.1500N	NONE	169.1500N	NONE	A	
AIR GUARD	16	168.6250N	NONE	168.6250N	110.9	A	
9. Prepared By (Resource Unit Leader)			Approved By (Planning Section Chief)			Date	Time
DONNA THOMAS			BRIAN ELDREDGE			05/20/2017	2000

Division/Group Assignment List (ICS 204 WF)

1. Incident Name:			3.			
WEST MIMS			I		B	
2. Operational Period: DAY SHIFT 0730-1930						
Date/Time From: 05/21/2017 0730 SUN		Date/Time To: 05/21/2017 1930 SUN				
4. Operations Personnel						
PLANNING OPERATIONS CHIEFS		STEVE WEAVER, JEREMY BRAND (T) PHIL DANIELS (T)		OPERATIONS CHIEF		JIM DURRWACHTER L. SMITH (T); S. BOWMAN (T)
BRANCH DIRECTOR		RON GARCIA		DIVISION/GROUP SUPERVISOR		TIM STILTNER RONNIE RUCKER, KEITH FIELDS (T)
SAFETY		BRAD LIDELL; MIKE COOK CLAY STEPHENS (T)		AIR TACTICAL GROUP SUPERVISOR		MARK NUNEZ, KEN MCLAUGHLIN
6. Control Operations/Work Assignments:						
Task						
<ul style="list-style-type: none"> • Patrol and mop up fuels appropriate to fuel type and anticipated weather and fire behavior. • Respond to any new starts within the division. 						
Purpose						
<ul style="list-style-type: none"> • Keep fire north of GA 94/FL 2. 						
End State						
<ul style="list-style-type: none"> • Fire is contained by adequate control line to reduce threat to escape; minimizing damage to private timberlands, private lands, and other resource values at risk. 						
7. Special Instructions:						
Ensure LCES is in place before operations begin and stay hydrated. Drive defensively and with lights on at all times. Identify escape routes.						
For IA protocol see page 8						
Medical Emergency Channel: Command ETA for Ambulance to Scene: Air: 20 – 30 mins Ground: 10 - 15 mins Paved roads only. IWI – IC or approved person will use Channel 16 (Air Guard) for contact with air ambulance Air Ambulance landing zone to be determined by IWI – IC Utilize engines to provide dust abatement, as needed, prior to air ambulance landing						
8. Division/Group Communication Summary						
Function	Channel	RX Frequency N/W	RX Tone/NAC	TX Frequency N/W	TX Tone/NAC	Mode
AIR TO GROUND	4	169.2000N	NONE	169.2000N	NONE	A
COMMAND	8	159.2700N	156.7	151.1000N	123.0	A
TACTICAL	13	159.4125N	NONE	159.4125N	NONE	A
AIR TO GROUND	14	166.6750N	NONE	166.6750N	NONE	A
AIR TO GROUND	15	169.1500N	NONE	169.1500N	NONE	A
AIR GUARD	16	168.6250N	NONE	168.6250N	110.9	A
9. Prepared By (Resource Unit Leader)			Approved By (Planning Section Chief)		Date	Time
DONNA THOMAS			BRIAN ELDREDGE		05/20/2017	2000

Division/Group Assignment List (ICS 204 WF)

1. Incident Name:			3.			
WEST MIMS			Branch:		Division/Group:	
2. Operational Period: DAY SHIFT 0730-1930			I		C	
Date/Time From: 05/21/2017 0730 SUN		Date/Time To: 05/21/2017 1930 SUN				
4. Operations Personnel						
PLANNING OPERATIONS CHIEF		STEVE WEAVER, JEREMY BRAND (T) PHIL DANIELS (T)		OPERATIONS CHIEF		JIM DURRWACHTER L. SMITH (T), S. BOWMAN (T)
BRANCH DIRECTOR		RON GARCIA		DIVISION/GROUP SUPERVISOR		BERT PLANTE, PAUL AMUNDSON (T)
SAFETY		BRAD LIDELL, MICHAEL COOK CLAY STEPHENS (T)		AIR TACTICAL GROUP SUPERVISOR		MARK NUNEZ, KEN MCLAUGHLIN
5. Resources Assigned this Period						
Strike Team / Task Force / Resource Designator		LWD	Leader	Number Persons	Drop Off PT./Time	Pick Up PT./Time
CREW - T2IA - PATRICK ENVIRONMENTAL, INC. - NCC - 20A C-11		05/22	AUSTIN HERGERT	19	ICP/0730	ICP/1930
ENG4 - NC-NCS - PP-1434 - D3 E-542		05/23	WALTER GORDON	2	ICP/0730	ICP/1930
ENG6 - WILDLANDS FIRE SRVC INC-162856 - 22 E-146		05/22	BRIAN TERRY	3	ICP/0730	ICP/1930
ENG6 E-454		05/21	TYLER GALLAGHER	2	ICP/0730	ICP/1930
ENG6 - 61 - VASHP E-450		05/21	JOE JARRELLS	3	ICP/0730	ICP/1930
ENG6-ATTACK-ONE FIRE MGMT SRVC INC E-457		05/21	WAYNE TAYLOR	2	ICP/0730	ICP/1930
ENG6 SHOAL CREEK - E651 E-78		05/24	WILLIAM LAYFIELD	3	ICP/0730	ICP/1930
ENG6 - WILDLANDS FIRE SRVC INC - A57267 - 8 E-459		05/21	DOUG SCOTT	3	ICP/0730	ICP/1930
ENG6 - WV-MOF - E-641 E-870		06/02	JARED D STAGGS	3	ICP/0730	ICP/1930
TPL2 E-669		05/25	JIMMY ANDERSON	2	ICP/0730	ICP/1930
TPL2 E-668		05/25	CLIFF LEWIS	2	ICP/0730	ICP/1930
TPL2 E-670		05/25	MATT DUGGAN	2	ICP/0730	ICP/1930
TPL2 - GFC3230 E-688		05/27	DAVID MASON	1	ICP/0730	ICP/1930
TPL3 - GFC1536 E-689		05/27	WALTER BIRD	1	ICP/0730	ICP/1930
8. Division/Group Communication Summary						
Function	Channel	RX Frequency N/W	RX Tone/NAC	TX Frequency N/W	TX Tone/NAC	Mode
AIR TO GROUND	4	169.2000N	NONE	169.2000N	NONE	A
COMMAND	8	159.2700N	156.7	151.1000N	123.0	A
TACTICAL	9	159.2850N	NONE	159.2850N	156.7	A
AIR TO GROUND	14	166.6750N	NONE	166.6750N	NONE	A
AIR TO GROUND	15	169.1500N	NONE	169.1500N	NONE	A
AIR GUARD	16	168.6250N	NONE	168.6250N	110.9	A
9. Prepared By (Resource Unit Leader)			Approved By (Planning Section Chief)		Date	Time
DONNA THOMAS			BRIAN ELDREDGE		05/20/2017	2000

Division/Group Assignment List (ICS 204 WF)

1. Incident Name:			3.			
WEST MIMS			Branch:		Division/Group:	
2. Operational Period: DAY SHIFT 0730-1930			I		C	
Date/Time From: 05/21/2017 0730 SUN		Date/Time To: 05/21/2017 1930 SUN				
4. Operations Personnel						
PLANNING OPERATIONS CHIEF		STEVE WEAVER, JEREMY BRAND (T) PHIL DANIELS (T)		OPERATIONS CHIEF		JIM DURRWACHTER L. SMITH (T), S. BOWMAN (T)
BRANCH DIRECTOR		RON GARCIA		DIVISION/GROUP SUPERVISOR		BERT PLANTE, PAUL AMUNDSON (T)
SAFETY		BRAD LIDELL, MICHAEL COOK CLAY STEPHENS (T)		AIR TACTICAL GROUP SUPERVISOR		MARK NUNEZ, KEN MCLAUGHLIN
5. Resources Assigned this Period						
Strike Team / Task Force / Resource Designator		LWD	Leader	Number Persons	Drop Off PT./Time	Pick Up PT./Time
TPL3 - GFC3186 E-687		05/27	WILLIAM K BRADY	1	ICP/0730	ICP/1930
WTS2 SUPPORT STRICKLANDS TRACTOR E-265		05/21	LUCIUS CORBITT	1	ICP/0730	ICP/1930
WTS2 - SUPPORT TIPTON & YOUNG E-135		05/31	KEN SWAIN	1	ICP/0730	ICP/1930
TFLD O-349		05/22	JEFF GOYINGS	1	ICP/0730	ICP/1930
TFLD O-597		05/29	CHAD R KIDD	1	ICP/0730	ICP/1930
STEQ O-558		05/25	DUKE CAMPBELL	1	ICP/0730	ICP/1930
STEQ O-564		05/26	RANDALL MOSLEY	1	ICP/0730	ICP/1930
EMPF E-375 470-532-8807		05/24	GARY ALLEN FORD	1	ICP/0730	ICP/1930
SOF2 O-541 470-366-6299		05/26	LOUIE CASAUS	1	ICP/0730	ICP/1930
8. Division/Group Communication Summary						
Function	Channel	RX Frequency N/W	RX Tone/NAC	TX Frequency N/W	TX Tone/NAC	Mode
AIR TO GROUND	4	169.2000N	NONE	169.2000N	NONE	A
COMMAND	8	159.2700N	156.7	151.1000N	123.0	A
TACTICAL	9	159.2850N	NONE	159.2850N	156.7	A
AIR TO GROUND	14	166.6750N	NONE	166.6750N	NONE	A
AIR TO GROUND	15	169.1500N	NONE	169.1500N	NONE	A
AIR GUARD	16	168.6250N	NONE	168.6250N	110.9	A
9. Prepared By (Resource Unit Leader)			Approved By (Planning Section Chief)		Date	Time
DONNA THOMAS			BRIAN ELDREDGE		05/20/2017	2000

Division/Group Assignment List (ICS 204 WF)

1. Incident Name:			3.			
WEST MIMS			Branch:		Division/Group:	
2. Operational Period: DAY SHIFT 0730-1930			I		C	
Date/Time From: 05/21/2017 0730 SUN		Date/Time To: 05/21/2017 1930 SUN				
4. Operations Personnel						
PLANNING OPERATIONS CHIEF		STEVE WEAVER, JEREMY BRAND (T) PHIL DANIELS (T)		OPERATIONS CHIEF		JIM DURRWACHTER L. SMITH (T), S. BOWMAN (T)
BRANCH DIRECTOR		RON GARCIA		DIVISION/GROUP SUPERVISOR		BERT PLANTE, PAUL AMUNDSON (T)
SAFETY		BRAD LIDELL, MICHAEL COOK CLAY STEPHENS (T)		AIR TACTICAL GROUP SUPERVISOR		MARK NUNEZ, KEN MCLAUGHLIN
6. Control Operations/Work Assignments:						
Task						
<ul style="list-style-type: none"> • Patrol and mop up fuels appropriate to fuel type and anticipated weather and fire behavior. • Respond to any new starts within the division. • Create or improve fireline around logging debris in coordination with logging operators. 						
Purpose						
<ul style="list-style-type: none"> • Keep fire east of swamp edge fire break. 						
End State						
<ul style="list-style-type: none"> • Fire is contained by adequate control line to reduce threat to escape; minimizing damage to private timberlands, private lands, and other resource values at risk. 						
7. Special Instructions:						
<p>Ensure LCES is in place before operations begin and stay hydrated. Drive defensively and with lights on at all times. Identify escape routes. Logging operations are continuing. Stay clear of cutting areas. Please be mindful of logging operations that will be ongoing. Ensure that all personnel stay clear of felling operations. Pay attention for potential reburn in logging area. Work with Gilyard Logging foreman on any suppression actions within the logging area.</p> <p>For IA protocol see page 8</p> <p>Additional Resources: Superior Pine Tractor Plow D6; SP-83, SP-85, SP-87</p> <p>Medical Emergency Channel: Command</p> <p>ETA for Ambulance to Scene: Air: 20 – 30 mins Ground: 10 - 15 mins Paved roads only.</p> <p>IWI – IC or approved person will use Channel 16 (Air Guard) for contact with air ambulance</p> <p>Air Ambulance landing zone to be determined by IWI – IC</p> <p>Utilize engines to provide dust abatement, as needed, prior to air ambulance landing</p>						
8. Division/Group Communication Summary						
Function	Channel	RX Frequency N/W	RX Tone/NAC	TX Frequency N/W	TX Tone/NAC	Mode
AIR TO GROUND	4	169.2000N	NONE	169.2000N	NONE	A
COMMAND	8	159.2700N	156.7	151.1000N	123.0	A
TACTICAL	9	159.2850N	NONE	159.2850N	156.7	A
AIR TO GROUND	14	166.6750N	NONE	166.6750N	NONE	A
AIR TO GROUND	15	169.1500N	NONE	169.1500N	NONE	A
AIR GUARD	16	168.6250N	NONE	168.6250N	110.9	A
9. Prepared By (Resource Unit Leader)			Approved By (Planning Section Chief)		Date	Time
DONNA THOMAS			BRIAN ELDREDGE		05/20/2017	2000

Division/Group Assignment List (ICS 204 WF)

1. Incident Name:			3.			
WEST MIMS			Branch:		Division/Group:	
2. Operational Period: DAY SHIFT 0730-1930			I		D	
Date/Time From: 05/21/2017 0730 SUN		Date/Time To: 05/21/2017 1930 SUN				
4. Operations Personnel						
PLANNING OPERATIONS CHIEF		STEVE WEAVER, JEREMY BRAND PHIL DANIELS (T)		OPERATIONS CHIEF		JIM DURRWACHTER L. SMITH (T); S. BOWMAN; (T)
BRANCH DIRECTOR		RON GARCIA		DIVISION/GROUP SUPERVISOR		JOE BURGETT HEATHER GRIFFIN (T)
SAFETY		BRAD LIDELL, MICHAEL COOK CLAY STEPHENS (T)		AIR TACTICAL GROUP SUPERVISOR		MARK NUNEZ, KEN MCLAUGHLIN
5. Resources Assigned this Period						
Strike Team / Task Force / Resource Designator		LWD	Leader	Number Persons	Drop Off PT./Time	Pick Up PT./Time
STEN O-360		05/21	ERIC WARD	1	ICP/0730	ICP/1930
ENG6 - OSCEOLA - 641 E-157		05/27	JUSTIN KNOWLES	3	ICP/0730	ICP/1930
ENG6 - WILDLANDS FIRE SERVICE E-262		06/02	CHAD ANDERSON	3	ICP/0730	ICP/1930
ENG6 - ENGINE - 4-87 E-613		05/25	JAMES HOONANIE	3	ICP/0730	ICP/1930
ENG6 - WILDLANDS FIRE SERVICE INC - 339712-9 E-458		05/21	IRVIN SAUL	3	ICP/0730	ICP/1930
ENG6 - ENGINE - 4-86 E-610		05/25	MURRAY ROSENGARTEN	3	ICP/0730	ICP/1930
ENG6 AR-OUF-PCS #691 E-838		05/29	LARRY SHORES	3	ICP/0730	ICP/1930
ENG6 WY-RSD 1602 E-849		05/29	RICHARD HOWE	3	ICP/0730	ICP/1930
DO22 OK-OKS ECU #2178 E-503		05/24	WILLIAM OWENS	1	ICP/0730	ICP/1930
DO23- WELBORN AQUA HAUL AND FIRE SERVICES, INC. E-514		05/25	JERRY WELBORN	2	ICP/0730	ICP/1930
WT - BAKER CO. FL - T40 E-477		05/26	BRADLEY CLARK	2	ICP/0730	ICP/1930
TFLD O-419		05/22	GEORGE M LIBERCAJT	1	ICP/0730	ICP/1930
TFLD (T) E-613.3		05/25	CHRIS BROOKS	1	ICP/0730	ICP/1930
8. Division/Group Communication Summary						
Function	Channel	RX Frequency N/W	RX Tone/NAC	TX Frequency N/W	TX Tone/NAC	Mode
COMMAND	2	159.1200N	NONE	151.3700N	100.0	A
AIR TO GROUND	4	169.2000N	NONE	169.2000N	NONE	A
TACTICAL	13	159.4125N	NONE	159.4125N	NONE	A
AIR TO GROUND	14	166.6750N	NONE	166.6750N	NONE	A
AIR TO GROUND	15	169.1500N	NONE	169.1500N	NONE	A
AIR GUARD	16	168.6250N	NONE	168.6250N	110.9	A
9. Prepared By (Resource Unit Leader)			Approved By (Planning Section Chief)		Date	Time
DONNA THOMAS			BRIAN ELDREDGE		05/20/2017	2000

Division/Group Assignment List (ICS 204 WF)

1. Incident Name:			3.			
WEST MIMS			I	D		
2. Operational Period: DAY SHIFT 0730-1930						
Date/Time From: 05/21/2017 0730 SUN		Date/Time To: 05/21/2017 1930 SUN				
4. Operations Personnel						
PLANNING OPERATIONS CHIEF		STEVE WEAVER, JEREMY BRAND PHIL DANIELS (T)		OPERATIONS CHIEF		JIM DURRWACHTER L. SMITH (T); S. BOWMAN; (T)
BRANCH DIRECTOR		RON GARCIA		DIVISION/GROUP SUPERVISOR		JOE BURGETT HEATHER GRIFFIN (T)
SAFETY		BRAD LIDELL, MICHAEL COOK CLAY STEPHENS (T)		AIR TACTICAL GROUP SUPERVISOR		MARK NUNEZ, KEN MCLAUGHLIN
6. Control Operations/Work Assignments:						
Purpose						
<ul style="list-style-type: none"> • Keep fire south of the Suwanee Canal. 						
End State						
<ul style="list-style-type: none"> • Fire activity north and west of Billies Island has been detected and appropriate action has been initiated. • Fire is contained by adequate control line to reduce threat to escape; minimizing damage to private timberlands, private lands, and other resource values at risk. 						
7. Special Instructions:						
Ensure LCES is in place before operations begin and stay hydrated. Drive defensively and with lights on at all times. Identify escape routes.						
For IA protocol see page 8						
Medical Emergency Channel: Command						
ETA for Ambulance to Scene:						
Air: 20 – 30 mins						
Ground: 10 - 15 mins Paved roads only.						
IWI – IC or approved person will use Channel 16 (Air Guard) for contact with air ambulance						
Air Ambulance landing zone to be determined by IWI – IC						
Utilize engines to provide dust abatement, as needed, prior to air ambulance landing						
8. Division/Group Communication Summary						
Function	Channel	RX Frequency N/W	RX Tone/NAC	TX Frequency N/W	TX Tone/NAC	Mode
COMMAND	2	159.1200N	NONE	151.3700N	100.0	A
AIR TO GROUND	4	169.2000N	NONE	169.2000N	NONE	A
TACTICAL	13	159.4125N	NONE	159.4125N	NONE	A
AIR TO GROUND	14	166.6750N	NONE	166.6750N	NONE	A
AIR TO GROUND	15	169.1500N	NONE	169.1500N	NONE	A
AIR GUARD	16	168.6250N	NONE	168.6250N	110.9	A
9. Prepared By (Resource Unit Leader)			Approved By (Planning Section Chief)		Date	Time
DONNA THOMAS			BRIAN ELDREDGE		05/20/2017	2000

Division/Group Assignment List (ICS 204 WF)

1. Incident Name:			3.			
WEST MIMS			Branch:		Division/Group:	
2. Operational Period: DAY SHIFT 0730-1930			I		E	
Date/Time From: 05/21/2017 0730 SUN		Date/Time To: 05/21/2017 1930 SUN				
4. Operations Personnel						
PLANNING OPERATIONS CHIEF		STEVE WEAVER, JEREMY BRAND (T) PHIL DANIELS (T)		OPERATIONS CHIEF		JIM DURRWACHTER L. SMITH (T), S. BOWMAN (T)
BRANCH DIRECTOR		RON GARCIA		DIVISION/GROUP SUPERVISOR		GREG TOLL
SAFETY		BRAD LIDELL, MIKE COOK CLAY STEPHENS (T)		AIR TACTICAL GROUP SUPERVISOR		MARK NUNEZ, KEN MCLAUGHLIN
5. Resources Assigned this Period						
Strike Team / Task Force / Resource Designator		LWD	Leader	Number Persons	Drop Off PT./Time	Pick Up PT./Time
ENGINE - T6 - MES #6198 E-871		06/02	DANIEL M PERKINS	3	ICP/0730	ICP/1930
DOZ1 UNIT #7699 - HUDSON E-788		05/30	CHAD WILEY	2	ICP/0730	ICP/1930
DOZ2 - TIPTON & YOUNG CONSTRUCTION COMP INC - E-506		05/23	ETHAN TIPTON	2	ICP/0730	ICP/1930
DOZ3 - KY-KYS - 311 - 650J E-510		05/24	JERRY BROWN	2	ICP/0730	ICP/1930
DOZ3 KY DOZER - 312 - 650J E-511		05/24	CHRISTOPHER ADAMS	2	ICP/0730	ICP/1930
TPL2 - TIPTON & YOUNG CONSTRUCTION COMP. E-509		05/23	AARON TIPTON	1	ICP/0730	ICP/1930
TPL3 - WILDLANDS FIRE SRVS INC - 75659 E-525		05/24	RONNIE OUIMETTE	2	ICP/0730	ICP/1930
TPL3 - WILDLANDS FIRE SRVS INC - 83627 E-464		05/21	PAUL MCDAVID	2	ICP/0730	ICP/1930
TPL3 - WILDLANDS FIRE SRVS INC - 92622 E-466		05/21	CHADWICK SLAYTON	2	ICP/0730	ICP/1930
TPL3 ATTACK ONE FIRE E-463		05/21	JEREMIAH CATES	1	ICP/0730	ICP/1930
TPL3 - NC-NCS - 3X77 E-568		05/24	DENNIS LEE REES	2	ICP/0730	ICP/1930
TPL3 - NC-NCS - 3X65 E-569		05/24	DANIEL TAYLER	2	ICP/0730	ICP/1930
TFLD O-416		05/23	CHAD HYATT	1	ICP/0730	ICP/1930
TFLD O-593		05/29	BRYAN ROSENOW	1	ICP/0730	ICP/1930
8. Division/Group Communication Summary						
Function	Channel	RX Frequency N/W	RX Tone/NAC	TX Frequency N/W	TX Tone/NAC	Mode
COMMAND	2	159.1200N	NONE	151.3700N	100.0	A
AIR TO GROUND	4	169.2000N	NONE	169.2000N	NONE	A
TACTICAL	10	168.3500N	NONE	168.3500N	NONE	A
AIR TO GROUND	14	166.6750N	NONE	166.6750N	NONE	A
AIR TO GROUND	15	169.1500N	NONE	169.1500N	NONE	A
AIR GUARD	16	168.6250N	NONE	168.6250N	110.9	A
9. Prepared By (Resource Unit Leader)			Approved By (Planning Section Chief)		Date	Time
DONNA THOMAS			BRIAN ELDREDGE		05/20/2017	2000

Division/Group Assignment List (ICS 204 WF)

1. Incident Name:			3.			
WEST MIMS			Branch:		Division/Group:	
2. Operational Period: DAY SHIFT 0730-1930			I		E	
Date/Time From: 05/21/2017 0730 SUN		Date/Time To: 05/21/2017 1930 SUN				
4. Operations Personnel						
PLANNING OPERATIONS CHIEF		STEVE WEAVER, JEREMY BRAND (T) PHIL DANIELS (T)		OPERATIONS CHIEF		JIM DURRWACHTER L. SMITH (T), S. BOWMAN (T)
BRANCH DIRECTOR		RON GARCIA		DIVISION/GROUP SUPERVISOR		GREG TOLL
SAFETY		BRAD LIDELL, MIKE COOK CLAY STEPHENS (T)		AIR TACTICAL GROUP SUPERVISOR		MARK NUNEZ, KEN MCLAUGHLIN
5. Resources Assigned this Period						
Strike Team / Task Force / Resource Designator		LWD	Leader	Number Persons	Drop Off PT./Time	Pick Up PT./Time
TFLD O-498		05/24	WILLIE HOGGARD	1	ICP/0730	ICP/1930
STEQ O-613		05/28	DAN GALLAGHER	1	ICP/0730	ICP/1930
STEQ O-376		05/22	JAMIE MILLER	1	ICP/0730	ICP/1930
HEQB E-569.4		05/23	BRANDON S VANBUREN	1	ICP/0730	ICP/1930
EMPF E-316 520-508-9807		05/30	STEVE WOLFSTICH	1	ICP/0730	ICP/1930
SOF2 O-586 505-690-9035		05/26	PHILLIP YOUNG	1	ICP/0730	ICP/1930
8. Division/Group Communication Summary						
Function	Channel	RX Frequency N/W	RX Tone/NAC	TX Frequency N/W	TX Tone/NAC	Mode
COMMAND	2	159.1200N	NONE	151.3700N	100.0	A
AIR TO GROUND	4	169.2000N	NONE	169.2000N	NONE	A
TACTICAL	10	168.3500N	NONE	168.3500N	NONE	A
AIR TO GROUND	14	166.6750N	NONE	166.6750N	NONE	A
AIR TO GROUND	15	169.1500N	NONE	169.1500N	NONE	A
AIR GUARD	16	168.6250N	NONE	168.6250N	110.9	A
9. Prepared By (Resource Unit Leader)			Approved By (Planning Section Chief)		Date	Time
DONNA THOMAS			BRIAN ELDREDGE		05/20/2017	2000

Division/Group Assignment List (ICS 204 WF)

1. Incident Name:			3.			
WEST MIMS			Branch:		Division/Group:	
2. Operational Period:			I			
DAY SHIFT 0730-1930			E			
Date/Time From: 05/21/2017 0730 SUN		Date/Time To: 05/21/2017 1930 SUN				
4. Operations Personnel						
PLANNING OPERATIONS CHIEF		STEVE WEAVER, JEREMY BRAND (T) PHIL DANIELS (T)		OPERATIONS CHIEF		JIM DURRWACHTER L. SMITH (T), S. BOWMAN (T)
BRANCH DIRECTOR		RON GARCIA		DIVISION/GROUP SUPERVISOR		GREG TOLL
SAFETY		BRAD LIDELL, MIKE COOK CLAY STEPHENS (T)		AIR TACTICAL GROUP SUPERVISOR		MARK NUNEZ, KEN MCLAUGHLIN
6. Control Operations/Work Assignments:						
Task						
<ul style="list-style-type: none"> Patrol and mop up fuels appropriate to fuel type and anticipated weather and fire behavior. Assist and coordinate preparation of plantations adjacent to the division. Respond to any new starts within the division. Monitor fire activity and location in the vicinity of Billies Island. Refresh Swamp Edge Break. 						
Purpose						
<ul style="list-style-type: none"> Keep fire east of Swamp Edge Break. 						
End State						
<ul style="list-style-type: none"> Fire activity north and west of Billies Island has been detected and appropriate action has been initiated. Fire is contained by adequate control line to reduce threat to escape; minimizing damage to private timberlands, private lands, and other resource values at risk. 						
7. Special Instructions:						
<p>Medical Emergency Channel: Command ETA for Ambulance to Scene: Air: 20 – 30 mins Ground: 10 - 15 mins Paved roads only. IWI – IC or approved person will use Channel 16 (Air Guard) for contact with air ambulance Air Ambulance landing zone to be determined by IWI – IC Utilize engines to provide dust abatement, as needed, prior to air ambulance landing</p> <p>For IA protocol see page 8</p>						
8. Division/Group Communication Summary						
Function	Channel	RX Frequency N/W	RX Tone/NAC	TX Frequency N/W	TX Tone/NAC	Mode
COMMAND	2	159.1200N	NONE	151.3700N	100.0	A
AIR TO GROUND	4	169.2000N	NONE	169.2000N	NONE	A
TACTICAL	10	168.3500N	NONE	168.3500N	NONE	A
AIR TO GROUND	14	166.6750N	NONE	166.6750N	NONE	A
AIR TO GROUND	15	169.1500N	NONE	169.1500N	NONE	A
AIR GUARD	16	168.6250N	NONE	168.6250N	110.9	A
9. Prepared By (Resource Unit Leader)			Approved By (Planning Section Chief)		Date	Time
DONNA THOMAS			BRIAN ELDREDGE		05/20/2017	2000

Division/Group Assignment List (ICS 204 WF)

1. Incident Name:			3.			
WEST MIMS			Branch:		Division/Group:	
2. Operational Period: DAY SHIFT 0730-1930			I		F	
Date/Time From: 05/21/2017 0730 SUN		Date/Time To: 05/21/2017 1930 SUN				
4. Operations Personnel						
PLANNING OPERATIONS CHIEF		STEVE WEAVER; JEREMY BRAND (T) PHIL DANIELS (T)		OPERATIONS CHIEF		JIM DURRWACHTER L. SMITH (T); S. BOWMAN (T)
BRANCH DIRECTOR		RON GARCIA		DIVISION/GROUP SUPERVISOR		SHELLY CROOK CASEY O'CONNOR (T)
SAFETY		BRAD LIDELL; MIKE COOK CLAY STEPHENS (T)		AIR TACTICAL GROUP SUPERVISOR		MARK NUNEZ, KEN MCLAUGHLIN
5. Resources Assigned this Period						
Strike Team / Task Force / Resource Designator		LWD	Leader	Number Persons	Drop Off PT./Time	Pick Up PT./Time
ENG6 - UT-FIF - ENG 612 E-843		06/11	JARED TEEPLES	8	ICP/0730	ICP/1930
TPL4-GFC3285 E-824		05/31	TERRY K HEARD	1	ICP/0730	ICP/1930
TPL4 - GFC3212 E-825		05/31	BRUCE E FREE	1	ICP/0730	ICP/1930
TPL4 - GFC2230 E-826		05/31	CHRISTOPHER SCOTT BRANNEN	1	ICP/0730	ICP/1930
TPL4 - GFC3254 E-876		06/01	MICHAEL YOKE JR	1	ICP/0730	ICP/1930
TPL4 TOMPKINS GFC3331 E-877		06/01	DAVID TOMPKINS	1	ICP/0730	ICP/1930
TPL5 - DAVIS GFC3219 E-878		06/01	PHILLIP B DAVIS	1	ICP/0730	ICP/1930
TFLD O-648		05/31	STEVE H YOUNG	1	ICP/0730	ICP/1930
TFLD O-653		05/31	RYAN M RAWLINSON	1	ICP/0730	ICP/1930
STEQ O-565		05/31	ALBERT POTTS	1	ICP/0730	ICP/1930
STEQ O-717		06/01	LONES WILLIAMS	1		
SOF2 O-586 505-690-9035		05/27	PHILLIP YOUNG	1	ICP/0730	ICP/1930
8. Division/Group Communication Summary						
Function	Channel	RX Frequency N/W	RX Tone/NAC	TX Frequency N/W	TX Tone/NAC	Mode
COMMAND	2	159.1200N	NONE	151.3700N	100.0	A
AIR TO GROUND	4	169.2000N	NONE	169.2000N	NONE	A
TACTICAL	11	163.1000N	NONE	163.1000N	NONE	A
AIR TO GROUND	14	166.6750N	NONE	166.6750N	NONE	A
AIR TO GROUND	15	169.1500N	NONE	169.1500N	NONE	A
AIR GUARD	16	168.6250N	NONE	168.6250N	110.9	A
9. Prepared By (Resource Unit Leader)			Approved By (Planning Section Chief)		Date	Time
MISSY FORDER			BRIAN ELDRIDGE		05/20/2017	2000

Division/Group Assignment List (ICS 204 WF)

1. Incident Name:			3.				
WEST MIMS			Branch:		Division/Group:		
2. Operational Period:			DAY SHIFT 0730-1930				
Date/Time From: 05/21/2017 0730 SUN		Date/Time To: 05/21/2017 1930 SUN		I		F	
4. Operations Personnel							
PLANNING OPERATIONS CHIEF		STEVE WEAVER; JEREMY BRAND (T) PHIL DANIELS (T)		OPERATIONS CHIEF		JIM DURRWACHTER L. SMITH (T); S. BOWMAN (T)	
BRANCH DIRECTOR		RON GARCIA		DIVISION/GROUP SUPERVISOR		SHELLY CROOK CASEY O'CONNOR (T)	
SAFETY		BRAD LIDELL; MIKE COOK CLAY STEPHENS (T)		AIR TACTICAL GROUP SUPERVISOR		MARK NUNEZ, KEN MCLAUGHLIN	
6. Control Operations/Work Assignments:							
Task							
<ul style="list-style-type: none"> • Assist private landowners and coordinate preparation of timberlands adjacent to the division. • Respond to any new starts within the division. • Monitor fire activity and location within the swamp. • Refresh Swamp Edge Break. 							
Purpose							
<ul style="list-style-type: none"> • Keep fire east of Swamp Edge Break. 							
End State							
<ul style="list-style-type: none"> • Fire activity that threatens Swamp Edge Break has been detected and appropriate action has been initiated. • Fire is contained by adequate control line to reduce threat to escape; minimizing damage to private timberlands, private lands, and other resource values at risk. 							
7. Special Instructions:							
<p>Medical Emergency Channel: Command ETA for Ambulance to Scene: Air: 20 – 30 mins Ground: 10 - 15 mins Paved roads only. IWI – IC or approved person will use Channel 16 (Air Guard) for contact with air ambulance Air Ambulance landing zone to be determined by IWI – IC Utilize engines to provide dust abatement, as needed, prior to air ambulance landing</p> <p>For IA protocol see page 8</p>							
8. Division/Group Communication Summary							
Function	Channel	RX Frequency N/W	RX Tone/NAC	TX Frequency N/W	TX Tone/NAC	Mode	
COMMAND	2	159.1200N	NONE	151.3700N	100.0	A	
AIR TO GROUND	4	169.2000N	NONE	169.2000N	NONE	A	
TACTICAL	11	163.1000N	NONE	163.1000N	NONE	A	
AIR TO GROUND	14	166.6750N	NONE	166.6750N	NONE	A	
AIR TO GROUND	15	169.1500N	NONE	169.1500N	NONE	A	
AIR GUARD	16	168.6250N	NONE	168.6250N	110.9	A	
9. Prepared By (Resource Unit Leader)			Approved By (Planning Section Chief)		Date	Time	
MISSY FORDER			BRIAN ELDRIDGE		05/20/2017	2000	

Division/Group Assignment List (ICS 204 WF)

1. Incident Name:			3.			
WEST MIMS			I		Division/Group: FL FFS CONTINGENCY	
2. Operational Period: DAY SHIFT 0730-1930						
Date/Time From: 05/21/2017 0730 SUN		Date/Time To: 05/21/2017 1930 SUN				
4. Operations Personnel						
PLANNING OPERATIONS CHIEF		STEVE WEAVER, JEREMY BRAND PHIL DANIELS (T)		OPERATIONS CHIEF		JIM DURRWACHTER L. SMITH (T), S. BOWMAN (T)
BRANCH DIRECTOR		RON GARCIA		DIVISION/GROUP SUPERVISOR		GLENN DAVIS JOHN RAULERSON
SAFETY		BRAD LIDELL; MIKE COOK CLAY STEPHENS (T)		AIR TACTICAL GROUP SUPERVISOR		MARK NUNEZ, KEN MCLAUGHLIN
5. Resources Assigned this Period						
Strike Team / Task Force / Resource Designator		LWD	Leader	Number Persons	Drop Off PT./Time	Pick Up PT./Time
ENG6				2	EAST CAMP /0730	EAST CAMP /1930
TPL2 JOHN BETHEA				1	EAST CAMP /0730	EAST CAMP /1930
TPL2				1	EAST CAMP /0730	EAST CAMP /1930
DOZ2				1	EAST CAMP /0730	EAST CAMP /1930
DOZ2				1	EAST CAMP /0730	EAST CAMP /1930
DOZ2				1	EAST CAMP /0730	EAST CAMP /1930
DOZ1				1	EAST CAMP /0730	EAST CAMP /1930
STDZ			ANDY LAMBORN	1	EAST CAMP /0730	EAST CAMP /1930
6. Control Operations/Work Assignments:						
Purpose:						
<ul style="list-style-type: none"> • To provide suppression support for incident. 						
Task:						
<ul style="list-style-type: none"> • Resources are staged at John Bethea State Forest headquarters. • Resources are ready upon calling for IA or extended attack. 						
End State:						
<ul style="list-style-type: none"> • Ready support resources to respond to protect structures, timberland and resource values at risk. 						
8. Division/Group Communication Summary						
Function	Channel	RX Frequency N/W	RX Tone/NAC	TX Frequency N/W	TX Tone/NAC	Mode
COMMAND	2	159.1200N	NONE	151.3700N	100.0	A
AIR TO GROUND	4	169.2000N	NONE	169.2000N	NONE	A
TACTICAL	6	159.3900N	NONE	159.3900N	156.7	A
AIR TO GROUND	14	166.6750N	NONE	166.6750N	NONE	A
AIR TO GROUND	15	169.1500N	NONE	169.1500N	NONE	A
AIR GUARD	16	168.6250N	NONE	168.6250N	110.9	A
9. Prepared By (Resource Unit Leader)			Approved By (Planning Section Chief)		Date	Time
TIFFANY PATE			BRIAN ELDREDGE		05/20/2017	2000

Division/Group Assignment List (ICS 204 WF)

1. Incident Name:			3.				
WEST MIMS			I	Branch:		Division/Group:	
2. Operational Period: DAY SHIFT 0730-1930				I		FL FFS CONTINGENCY	
Date/Time From: 05/21/2017 0730 SUN		Date/Time To: 05/21/2017 1930 SUN					
4. Operations Personnel							
PLANNING OPERATIONS CHIEF		STEVE WEAVER, JEREMY BRAND PHIL DANIELS (T)		OPERATIONS CHIEF		JIM DURRWACHTER L. SMITH (T), S. BOWMAN (T)	
BRANCH DIRECTOR		RON GARCIA		DIVISION/GROUP SUPERVISOR		GLENN DAVIS JOHN RAULERSON	
SAFETY		BRAD LIDELL; MIKE COOK CLAY STEPHENS (T)		AIR TACTICAL GROUP SUPERVISOR		MARK NUNEZ, KEN MCLAUGHLIN	
7. Special Instructions:							
<p>Ensure LCES is in place before operations begin. Drive defensively and with lights on at all times. Assure common communication per IAP Comm Plan is established before engagement.</p> <p>Medical Emergency Channel: Command ETA for Ambulance to Scene: Air: 20 – 30 mins Ground: 10 - 15 mins Paved roads only. IWI – IC or approved person will use Channel 16 (Air Guard) for contact with air ambulance Air Ambulance landing zone to be determined by IWI – IC Utilize engines to provide dust abatement, as needed, prior to air ambulance landing</p> <p>Contact Rick Dolan, FL FSS Unified IC 352-222-4420 when activating contingency resources.</p> <p>For IA protocol see page 8</p>							
8. Division/Group Communication Summary							
Function	Channel	RX Frequency N/W	RX Tone/NAC	TX Frequency N/W	TX Tone/NAC	Mode	
COMMAND	2	159.1200N	NONE	151.3700N	100.0	A	
AIR TO GROUND	4	169.2000N	NONE	169.2000N	NONE	A	
TACTICAL	6	159.3900N	NONE	159.3900N	156.7	A	
AIR TO GROUND	14	166.6750N	NONE	166.6750N	NONE	A	
AIR TO GROUND	15	169.1500N	NONE	169.1500N	NONE	A	
AIR GUARD	16	168.6250N	NONE	168.6250N	110.9	A	
9. Prepared By (Resource Unit Leader)			Approved By (Planning Section Chief)		Date	Time	
TIFFANY PATE			BRIAN ELDREDGE		05/20/2017	2000	

Division/Group Assignment List (ICS 204 WF)

1. Incident Name:			3.						
WEST MIMS			I		Branch:		Division/Group:		
2. Operational Period: DAY SHIFT 0730-1930					WEST ROAD MAINTENANCE				
Date/Time From: 05/21/2017 0730 SUN		Date/Time To: 05/21/2017 1930 SUN							
4. Operations Personnel									
OPERATIONS CHIEF		JIM DURRWACHTER L. SMITH (T), S. BOWMAN (T)		THSP ROADS					
BRANCH DIRECTOR		RON GARCIA		DIVISION/GROUP SUPERVISOR		CANDICE KUTROSKY			
SAFETY		BRAD LIDELL, MIKE COOK CLAY STEPHENS (T)		AIR TACTICAL GROUP SUPERVISOR		MARK NUNEZ, KEN MCLAUGHLIN			
5. Resources Assigned this Period									
Strike Team / Task Force / Resource Designator		LWD	Leader	Number Persons	Drop Off PT./Time	Pick Up PT./Time			
DOZ2 - AR # 6640 E-512		05/25	WESTLEY WHISENHUNT	1	EAST CAMP/0730	EAST CAMP/1930			
EXCA (ANY TYPE) - VIN# 500242 E-626		05/30	ALEX CORNEILIUS	1	EAST CAMP/0730	EAST CAMP/1930			
GRD - WILDLANDS FIRE SERVICE INC - 6198TE E-136		05/21	CARSON SWEENEY	1	EAST CAMP/0730	EAST CAMP/1930			
GRD1 - VIN# 625863 E-866		06/01	BRIAN JENKINS	1	EAST CAMP/0730	EAST CAMP/1930			
GRD2 - MOORE'S QUALITY EARTHMOVING, INC E-641		05/29	ERIC MOORE	2	EAST CAMP/0730	EAST CAMP/1930			
GRD2 - R.O.T. RANCH CONSTRUCTION, INC. - E-639		05/26	TRAVIS WORRELL	1	EAST CAMP/0730	EAST CAMP/1930			
TDMP - VIN# 54083 E-624		05/28	ALEX CORNEIL	2	EAST CAMP/0730	EAST CAMP/1930			
TDMP - VIN# 64094 E-625		05/30	WILLIAM DICKERSON	2	EAST CAMP/0730	EAST CAMP/1930			
WTS2 - VIN# 26825 E-408		05/28	RICHARD PETERS	1	EAST CAMP/0730	EAST CAMP/1930			
WTS2 - HOME STYLE WATER TENDIN' E-644		05/29	JOHNNY CASTILLO	1	EAST CAMP/0730	EAST CAMP/1930			
WT2 TIPTON & YOUNG CONST E-340		05/21	RICHARD JONES	1	EAST CAMP/0730	EAST CAMP/1930			
WTS2 - TIPTON & YOUNG CONSTRUCT E-347		05/26	ROBERT COYLE	1	EAST CAMP/0730	EAST CAMP/1930			
WTS2 E-746		05/31	DANNIE YOUMAS	1	EAST CAMP/0730	EAST CAMP/1930			
W TS2 - TIPTON & YOUNG CONSTRUCT E-313		05/25	WOODY BARGERON	1	EAST CAMP/0730	EAST CAMP/1930			
TFLD O-632		05/29	ANDREW V BRANSON	1	EAST CAMP/0730	EAST CAMP/1930			
8. Division/Group Communication Summary									
Function	Channel	RX Frequency N/W	RX Tone/NAC	TX Frequency N/W	TX Tone/NAC	Mode			
COMMAND	2	159.1200N	NONE	151.3700N	100.0	A			
AIR TO GROUND	4	169.2000N	NONE	169.2000N	NONE	A			
TACTICAL	6	159.3900N	NONE	159.3900N	156.7	A			
AIR TO GROUND	14	166.6750N	NONE	166.6750N	NONE	A			
AIR TO GROUND	15	169.1500N	NONE	169.1500N	NONE	A			
AIR GUARD	16	168.6250N	NONE	168.6250N	110.9	A			
9. Prepared By (Resource Unit Leader)			Approved By (Planning Section Chief)			Date		Time	
TIFFANY PATE			BRIAN ELDREDGE			05/20/2017		2000	

Division/Group Assignment List (ICS 204 WF)

1. Incident Name:				3.					
WEST MIMS				I		Division/Group: WEST ROAD MAINTENANCE			
2. Operational Period: DAY SHIFT 0730-1930									
Date/Time From: 05/21/2017 0730 SUN		Date/Time To: 05/21/2017 1930 SUN							
4. Operations Personnel									
OPERATIONS CHIEF		JIM DURRWACHTER L. SMITH (T), S. BOWMAN (T)		THSP ROADS					
BRANCH DIRECTOR		RON GARCIA		DIVISION/GROUP SUPERVISOR		CANDICE KUTROSKY			
SAFETY		BRAD LIDELL, MIKE COOK CLAY STEPHENS (T)		AIR TACTICAL GROUP SUPERVISOR		MARK NUNEZ, KEN MCLAUGHLIN			
5. Resources Assigned this Period									
Strike Team / Task Force / Resource Designator		LWD	Leader	Number Persons	Drop Off PT./Time	Pick Up PT./Time			
TFLD O-652		05/29	LONNY HAGEDON	1	EAST CAMP/0730	EAST CAMP/1930			
HEQB O-355		05/21	RON ROCKIS	1	EAST CAMP/0730	EAST CAMP/1930			
HEQB O-547		05/26	RODNEY G HELZER	1	EAST CAMP/0730	EAST CAMP/1930			
HEQB O-665		05/29	BOB LITTLE	1	EAST CAMP/0730	EAST CAMP/1930			
HEQB O-599		05/31	MARK J BASS	1	EAST CAMP/0730	EAST CAMP/1930			
HEQB O-688		05/30	GENE PHILLIPS	1	EAST CAMP/0730	EAST CAMP/1930			
HEQB O-600		05/29	SHANE FEIGHTNER	1	EAST CAMP/0730	EAST CAMP/1930			
HEQB O-647		05/31	BRANDON CREECH	1	EAST CAMP/0730	EAST CAMP/1930			
HEQB O-379		05/22	BRANDON COVILLE	1	EAST CAMP/0730	EAST CAMP/1930			
HEQB O-687		05/31	RUDY MEDRANO	1	EAST CAMP/0730	EAST CAMP/1930			
HEQB O-600		05/29	SHANE FEIGHTNER	1	EAST CAMP/0730	EAST CAMP/1930			
HEQB O-645		05/29	JONATHAN MCDUFFEY	1	EAST CAMP/0730	EAST CAMP/1930			
8. Division/Group Communication Summary									
Function	Channel	RX Frequency N/W	RX Tone/NAC	TX Frequency N/W	TX Tone/NAC	Mode			
COMMAND	2	159.1200N	NONE	151.3700N	100.0	A			
AIR TO GROUND	4	169.2000N	NONE	169.2000N	NONE	A			
TACTICAL	6	159.3900N	NONE	159.3900N	156.7	A			
AIR TO GROUND	14	166.6750N	NONE	166.6750N	NONE	A			
AIR TO GROUND	15	169.1500N	NONE	169.1500N	NONE	A			
AIR GUARD	16	168.6250N	NONE	168.6250N	110.9	A			
9. Prepared By (Resource Unit Leader)			Approved By (Planning Section Chief)			Date		Time	
TIFFANY PATE			BRIAN ELDREDGE			05/20/2017		2000	

Division/Group Assignment List (ICS 204 WF)

1. Incident Name:			3.			
WEST MIMS			I	Branch:		Division/Group:
2. Operational Period: DAY SHIFT 0730-1930						WEST ROAD MAINTENANCE
Date/Time From: 05/21/2017 0730 SUN		Date/Time To: 05/21/2017 1930 SUN				
4. Operations Personnel						
OPERATIONS CHIEF		JIM DURRWACHTER L. SMITH (T), S. BOWMAN (T)		THSP ROADS		
BRANCH DIRECTOR		RON GARCIA		DIVISION/GROUP SUPERVISOR		CANDICE KUTROSKY
SAFETY		BRAD LIDELL, MIKE COOK CLAY STEPHENS (T)		AIR TACTICAL GROUP SUPERVISOR		MARK NUNEZ, KEN MCLAUGHLIN
6. Control Operations/Work Assignments:						
Task						
<ul style="list-style-type: none"> • Assess access roads to fire perimeter; repair or maintain as necessary in accordance with priority list provided by Operations Section Chief. • Provide adequate signage for traffic safety. • Assess single lane bridges and culverts for safety and maintenance needs. 						
Purpose						
<ul style="list-style-type: none"> • To keep adequate vehicular access to the fire perimeter. 						
End State						
<ul style="list-style-type: none"> • Access roads are in a safe and travel worthy condition. • 						
7. Special Instructions:						
Check in and out with Division Supervisor when moving between divisions.						
Medical Emergency Channel: Command ETA for Ambulance to Scene: Air: 20 – 30 mins Ground: 10 - 15 mins Paved roads only. IWI – IC or approved person will use Channel 16 (Air Guard) for contact with air ambulance Air Ambulance landing zone to be determined by IWI – IC Utilize engines to provide dust abatement, as needed, prior to air ambulance landing						
For IA protocol see page 8						
8. Division/Group Communication Summary						
Function	Channel	RX Frequency N/W	RX Tone/NAC	TX Frequency N/W	TX Tone/NAC	Mode
COMMAND	2	159.1200N	NONE	151.3700N	100.0	A
AIR TO GROUND	4	169.2000N	NONE	169.2000N	NONE	A
TACTICAL	6	159.3900N	NONE	159.3900N	156.7	A
AIR TO GROUND	14	166.6750N	NONE	166.6750N	NONE	A
AIR TO GROUND	15	169.1500N	NONE	169.1500N	NONE	A
AIR GUARD	16	168.6250N	NONE	168.6250N	110.9	A
9. Prepared By (Resource Unit Leader)			Approved By (Planning Section Chief)		Date	Time
TIFFANY PATE			BRIAN ELDREDGE		05/20/2017	2000

Division/Group Assignment List (ICS 204 WF)

1. Incident Name:			3.			
WEST MIMS			Branch:		Division/Group:	
2. Operational Period:			I, III, IV		SWING SHIFT	
Date/Time From: 05/21/2017 1800 SUN			Date/Time To: 05/22/2017 0200 MON			
4. Operations Personnel						
PLANNING OPERATIONS CHIEF		STEVE WEAVER, MARC CRAIN J.BRAND (T), M.DAVIS (T), P.DANIELS		OPERATIONS CHIEF		JIM DURRWACHTER
BRANCH DIRECTOR		ROBERT TRINCADO		DIVISION/GROUP SUPERVISOR		SHANE STURGILL BRYCE THOMAS
SAFETY		BRAD LIDELL, MIKE COOK CLAY STEPHENS (T)		AIR TACTICAL SUPERVISOR		MARK NUNEZ KEN MCLAUGHLIN
5. Resources Assigned this Period						
Strike Team / Task Force / Resource Designator		LWD	Leader	Number Persons	Drop Off PT./Time	Pick Up PT./Time
TFLD O-384		05/21	RICHARD SACK	1	DP 10/1800	DP 10/0200
HEQB O-381		05/22	JOHN A KINDER	1	DP 10/1800	DP 10/0200
ENG6 - KY-KYS - 410 E-661		05/26	KEVIN RADSCHWEIT	2	DP 10/1800	DP 10/0200
ENG6 - KY-KYS - 110 E-658		05/26	DENNIS W WOOLARD	2	DP 10/1800	DP 10/0200
ENG6 - NC-NCF E-691 E-255		05/27	CODY TROUT THOMAS	3	DP 10/1800	DP 10/0200
ENG6 - NC-NCF E-621 E-256		05/27	JASON BOONE	3	DP 10/1800	DP 10/0200
TPL3 - GFC3195 E-684		05/26	MATTHEW DEAN WILSON	1	DP 10/1800	DP 10/0200
TFLD O-380		05/21	WILLIAM K HARRIS	1	DP 10/1800	DP 10/0200
ENG6 - KY-KYS - 111 E-659		05/26	STEPHEN HAMMOND	2	DP 10/1800	DP 10/0200
ENG6 - KY-KYS - 310 E-660		05/26	ADAM R MCGUIRE	2	DP 10/1800	DP 10/0200
ENG6 LNF621 E-765		05/30	TIM MCELHENY	7	DP 10/1800	DP 10/0200
ENG6 - STONEWALL FPD - ENGINE 435 E-772		05/29	KEVIN YEATTS	3	DP 10/1800	DP 10/0200
TPL4 - GFC3201 E-685		05/26	BILLY WENDELON BROWN II	1	DP 10/1800	DP 10/0200
STEQ O-563		05/26	DANIEL GORE	1	DP 10/1800	DP 10/0200
8. Division/Group Communication Summary						
Function	Channel	RX Frequency N/W	RX Tone/NAC	TX Frequency N/W	TX Tone/NAC	Mode
COMMAND	3	159.1200N	NONE	151.3700N	82.5	A
AIR TO GROUND	4	169.2000N	NONE	169.2000N	NONE	A
COMMAND	8	159.2700N	156.7	151.1000N	123.0	A
TACTICAL	12	159.4425N	NONE	159.4425N	NONE	A
AIR TO GROUND	14	166.6750N	NONE	166.6750N	NONE	A
AIR TO GROUND	15	169.1500N	NONE	169.1500N	NONE	A
AIR GUARD	16	168.6250N	NONE	168.6250N	110.9	A
9. Prepared By (Resource Unit Leader)			Approved By (Planning Section Chief)		Date	Time
DONNA THOMAS			BRAIN ELDREDGE		05/20/2017	2000

Division/Group Assignment List (ICS 204 WF)

1. Incident Name:			3.			
WEST MIMS			Branch:		Division/Group:	
2. Operational Period:			I, III, IV			
SWING SHIFT 1800 - 0200						
Date/Time From: 05/21/2017 1800 SUN		Date/Time To: 05/22/2017 0200 MON		SWING SHIFT		
4. Operations Personnel						
PLANNING OPERATIONS CHIEF		STEVE WEAVER, MARC CRAIN J.BRAND (T), M.DAVIS (T), P.DANIELS		OPERATIONS CHIEF		JIM DURRWACHTER
BRANCH DIRECTOR		ROBERT TRINCADO		DIVISION/GROUP SUPERVISOR		SHANE STURGILL BRYCE THOMAS
SAFETY		BRAD LIDELL, MIKE COOK CLAY STEPHENS (T)		AIR TACTICAL SUPERVISOR		MARK NUNEZ KEN MCLAUGHLIN
5. Resources Assigned this Period						
Strike Team / Task Force / Resource Designator		LWD	Leader	Number Persons	Drop Off PT./Time	Pick Up PT./Time
TFLD O-654		05/31	JOSH CANTRELL	1	DP 10/1800	DP 10/0200
ENG6 - UNIT #9663 - SMITHVILLE TF6 E-259		05/26	COLTON CURLES	3	DP 10/1800	DP 10/0200
ENG T6 - NMN6S - ENG 61 E-611		05/26	MICHAEL BALIZAN	3	DP 10/1800	DP 10/0200
ENG6 - NMN4S - LAS VEGAS STATE FORESTRY E-606		05/26	CODY ALCON	3	DP 10/1800	DP 10/0200
ENG6 - NMN4S - LAS VEGAS STATE FORESTRY E-605		05/26	JARROD DURAN	3	DP 10/1800	DP 10/0200
TPL4 - GFC1029 E-686		05/26	JUSTIN KEITH JORDAN	1	DP 10/1800	DP 10/0200
TFLD O-594		05/29	MICHAEL SMITH	1	DP 10/1800	DP 10/0200
ENG6 - FOUNTAIN FIRE - 243 E-770		05/29	JAMES ORTA	3	DP 10/1800	DP 10/0200
ENG6 - FIRE MNGMT SER 351086 E-286		05/31	STEVE NAJJAR	3	DP 10/1800	DP 10/0200
ENG6 GLENWOOD 632 E-796		05/29	CODY RUSSELL	4	DP 10/1800	DP 10/0200
TPL4 - SMR #4441 E-508		05/28	TRAVIS POLLARD	1	DP 10/1800	DP 10/0200
WTS2 -AZ-DSY #146 E-643		05/30	RANDY KENNEDY	1	DP 10/1800	DP 10/0200
8. Division/Group Communication Summary						
Function	Channel	RX Frequency N/W	RX Tone/NAC	TX Frequency N/W	TX Tone/NAC	Mode
COMMAND	3	159.1200N	NONE	151.3700N	82.5	A
AIR TO GROUND	4	169.2000N	NONE	169.2000N	NONE	A
COMMAND	8	159.2700N	156.7	151.1000N	123.0	A
TACTICAL	12	159.4425N	NONE	159.4425N	NONE	A
AIR TO GROUND	14	166.6750N	NONE	166.6750N	NONE	A
AIR TO GROUND	15	169.1500N	NONE	169.1500N	NONE	A
AIR GUARD	16	168.6250N	NONE	168.6250N	110.9	A
9. Prepared By (Resource Unit Leader)			Approved By (Planning Section Chief)		Date	Time
DONNA THOMAS			BRAIN ELDREDGE		05/20/2017	2000

Division/Group Assignment List (ICS 204 WF)

1. Incident Name:			3.			
WEST MIMS			Branch:		Division/Group:	
2. Operational Period:			I, III, IV		SWING SHIFT	
SWING SHIFT 1800 - 0200						
Date/Time From: 05/21/2017 1800 SUN		Date/Time To: 05/22/2017 0200 MON				
4. Operations Personnel						
PLANNING OPERATIONS CHIEF		STEVE WEAVER, MARC CRAIN J.BRAND (T), M.DAVIS (T), P.DANIELS		OPERATIONS CHIEF		JIM DURRWACHTER
BRANCH DIRECTOR		ROBERT TRINCADO		DIVISION/GROUP SUPERVISOR		SHANE STURGILL BRYCE THOMAS
SAFETY		BRAD LIDELL, MIKE COOK CLAY STEPHENS (T)		AIR TACTICAL SUPERVISOR		MARK NUNEZ KEN MCLAUGHLIN
6. Control Operations/Work Assignments:						
Task:						
<ul style="list-style-type: none"> • Patrol and mop up as appropriate in priority Divisions C, O, A, Y, and Z. • Monitor fire activity and take appropriate action to reduce hot spots and maintain containment. • Ensure structure protection measures are in place. • Respond to any new starts within Refuge vicinity. Follow IA protocol. 						
Purpose:						
<ul style="list-style-type: none"> • Keep fire within current containment lines. • Provide transitional support to day shift operations. 						
End State:						
<ul style="list-style-type: none"> • Confine fire consistent with protecting structures, private timberlands and other resource values at risk. 						
7. Special Instructions:						
<p>Medical Emergency Channel: Command ETA for Ambulance to Scene: Air: 20 – 30 mins Ground: 10 - 15 mins Paved roads only. IWI – IC or approved person will use Channel 16 (Air Guard) for contact with air ambulance Air Ambulance landing zone to be determined by IWI – IC Utilize engines to provide dust abatement, as needed, prior to air ambulance landing</p>						
8. Division/Group Communication Summary						
Function	Channel	RX Frequency N/W	RX Tone/NAC	TX Frequency N/W	TX Tone/NAC	Mode
COMMAND	3	159.1200N	NONE	151.3700N	82.5	A
AIR TO GROUND	4	169.2000N	NONE	169.2000N	NONE	A
COMMAND	8	159.2700N	156.7	151.1000N	123.0	A
TACTICAL	12	159.4425N	NONE	159.4425N	NONE	A
AIR TO GROUND	14	166.6750N	NONE	166.6750N	NONE	A
AIR TO GROUND	15	169.1500N	NONE	169.1500N	NONE	A
AIR GUARD	16	168.6250N	NONE	168.6250N	110.9	A
9. Prepared By (Resource Unit Leader)			Approved By (Planning Section Chief)		Date	Time
DONNA THOMAS			BRAIN ELDREDGE		05/20/2017	2000

Division/Group Assignment List (ICS 204 WF)

1. Incident Name:			3.			
WEST MIMS			II	H/I		
2. Operational Period: DAY SHIFT 0730-1930						
Date/Time From: 05/21/2017 0730	SUN	Date/Time To: 05/21/2017 1930	SUN			
4. Operations Personnel						
PLANNING OPERATIONS CHIEF		STEVE WEAVER, JEREMY BRAND PHIL DANIELS (T)		OPERATIONS CHIEF		JIM DURRWACHTER L. SMITH, S. BOWMAN (T)
BRANCH DIRECTOR		NATE GOGNA		DIVISION/GROUP SUPERVISOR		CHRIS LUNDGREN
SAFETY		IVAN CUPP		AIR TACTICAL GROUP SUPERVISOR		MARK NUNEZ, KELLY MCLAUGHLIN
6. Control Operations/Work Assignments:						
Task						
<ul style="list-style-type: none"> • Assist private landowners and coordinate preparation of timberlands adjacent to the division. • Respond to any new starts within the division. • Monitor fire activity and location within the swamp. • Refresh Swamp Edge Break. 						
Purpose						
<ul style="list-style-type: none"> • Keep fire west of Swamp Edge Break. 						
End State						
<ul style="list-style-type: none"> • Fire activity that threatens Swamp Edge Break has been detected and appropriate action has been initiated. • Fire is contained by adequate control line to reduce threat to escape; minimizing damage to private timberlands, private lands, and other resource values at risk. 						
7. Special Instructions:						
<p>For IA protocol see page 8</p> <p>Medical Emergency Channel: Command ETA for Ambulance to Scene: Air: 20 – 30 mins Ground: 10 - 15 mins Paved roads only. IWI – IC or approved person will use Channel 16 (Air Guard) for contact with air ambulance Air Ambulance landing zone to be determined by IWI – IC Utilize engines to provide dust abatement, as needed, prior to air ambulance landing</p>						
8. Division/Group Communication Summary						
Function	Channel	RX Frequency N/W	RX Tone/NAC	TX Frequency N/W	TX Tone/NAC	Mode
AIR TO GROUND	4	169.2000N	NONE	169.2000N	NONE	A
COMMAND	7	159.2700N	156.7	151.1000N	100.0	A
TACTICAL	10	168.3500N	NONE	168.3500N	NONE	A
AIR TO GROUND	14	166.6750N	NONE	166.6750N	NONE	A
AIR TO GROUND	15	169.1500N	NONE	169.1500N	NONE	A
AIR GUARD	16	168.6250N	NONE	168.6250N	110.9	A
9. Prepared By (Resource Unit Leader)			Approved By (Planning Section Chief)		Date	Time
MISSY FORDER			BRIAN ELDRIDGE		05/20/2017	2000

Division/Group Assignment List (ICS 204 WF)

1. Incident Name:			3.			
WEST MIMS			II		J	
2. Operational Period: DAY SHIFT 0730-1930						
Date/Time From: 05/21/2017 0730 SUN		Date/Time To: 05/21/2017 1930 SUN				
4. Operations Personnel						
PLANNING OPERATIONS CHIEF		STEVE WEAVER, JEREMY BRAND (T) PHIL DANIELS (T)		OPERATIONS CHIEF		J. DURRWACHTER L. SMITH (T), S. BOWMEN (T)
BRANCH DIRECTOR		NATE GOGNA		DIVISION/GROUP SUPERVISOR		JASON FORTHOFFER JOE BRINSON JR (T)
SAFETY		JAYMES SMITH		AIR ATTACK GROUP SUPERVISOR		MARK NUNEZ, KEN MCLAUGHLIN
6. Control Operations/Work Assignments:						
Task						
<ul style="list-style-type: none"> • Assist private landowners and coordinate preparation of timberlands adjacent to the division. • Respond to any new starts within the division. • Monitor fire activity and location within the swamp. • Refresh Swamp Edge Break. 						
Purpose						
<ul style="list-style-type: none"> • Keep fire west of Swamp Edge Break. 						
End State						
<ul style="list-style-type: none"> • Fire activity that threatens Swamp Edge Break has been detected and appropriate action has been initiated. • Fire is contained by adequate control line to reduce threat to escape; minimizing damage to private timberlands, private lands, and other resource values at risk. 						
7. Special Instructions:						
<p>For IA protocol see page 8</p> <p>Medical Emergency Channel: Command ETA for Ambulance to Scene: Air: 20 – 30 mins Ground: 10 - 15 mins Paved roads only. IWI – IC or approved person will use Channel 16 (Air Guard) for contact with air ambulance Air Ambulance landing zone to be determined by IWI – IC Utilize engines to provide dust abatement, as needed, prior to air ambulance landing</p>						
8. Division/Group Communication Summary						
Function	Channel	RX Frequency N/W	RX Tone/NAC	TX Frequency N/W	TX Tone/NAC	Mode
AIR TO GROUND	4	169.2000N	NONE	169.2000N	NONE	A
COMMAND	7	159.2700N	156.7	151.1000N	100.0	A
TACTICAL	12	159.4425N	NONE	159.4425N	NONE	A
AIR TO GROUND	14	166.6750N	NONE	166.6750N	NONE	A
AIR TO GROUND	15	169.1500N	NONE	169.1500N	NONE	A
AIR GUARD	16	168.6250N	NONE	168.6250N	110.9	A
9. Prepared By (Resource Unit Leader)			Approved By (Planning Section Chief)		Date	Time
MISSY FORDER			BRIAN ELDRIDGE		05/20/2017	2000

Division/Group Assignment List (ICS 204 WF)

1. Incident Name:			3.			
WEST MIMS			III		INITIAL ATTACK	
2. Operational Period: DAY SHIFT 0730-1930						
Date/Time From: 05/21/2017 0730 SUN		Date/Time To: 05/21/2017 1930 SUN				
4. Operations Personnel						
PLANNING OPERATIONS CHIEF		S. WEAVER, P. DANIELS (T), J. BRAND M. DAVIS (T), M. CRAIN		OPERATIONS CHIEF		J. DURRWACHTER, B. MONDAY (T) L. SMITH(T), S. BOWMAN (T)
BRANCH DIRECTOR		RON SMITH		DIVISION/GROUP SUPERVISOR		GREGG BUCKALEW ARTURO GASDIK (T)
SAFETY		IVAN CUPP		AIR TACTICAL GROUP SUPERVISOR		MARK NUNEZ, KEN MCLAUGHLIN
6. Control Operations/Work Assignments:						
Task						
<ul style="list-style-type: none"> • Respond to any new starts as requested by OKR duty officer. • Coordinate initial attack action with assigned aviation and/or ground assets. 						
Purpose						
<ul style="list-style-type: none"> • Ensure timely response on any initial attack within OKR jurisdictional boundaries and vicinity. 						
End State						
<ul style="list-style-type: none"> • Fire activity has been detected and appropriate action has been initiated. 						
7. Special Instructions:						
<p>Contact Resource Advisors for any cultural or archeological needs, as well as, RCW concerns. Ensure LCES is in place before operations begin and stay hydrated. Drive defensively and with lights on at all times. Communications: Use the tactical channel for the division you are in. Staging on east side at Refuge office.</p> <p>Medical Emergency Channel: Command ETA for Ambulance to Scene: Air: 20 – 30 mins Ground: 10 - 15 mins Paved roads only. IWI – IC or approved person will use Channel 16 (Air Guard) for contact with air ambulance Air Ambulance landing zone to be determined by IWI – IC Utilize engines to provide dust abatement, as needed, prior to air ambulance landing</p> <p>For IA protocol see page 8</p>						
8. Division/Group Communication Summary						
Function	Channel	RX Frequency N/W	RX Tone/NAC	TX Frequency N/W	TX Tone/NAC	Mode
COMMAND	3	159.1200N	NONE	151.3700N	82.5	A
AIR TO GROUND	4	169.2000N	NONE	169.2000N	NONE	A
TACTICAL	12	159.4425N	NONE	159.4425N	NONE	A
AIR TO GROUND	14	166.6750N	NONE	166.6750N	NONE	A
AIR TO GROUND	15	169.1500N	NONE	169.1500N	NONE	A
AIR GUARD	16	168.6250N	NONE	168.6250N	110.9	A
9. Prepared By (Resource Unit Leader)			Approved By (Planning Section Chief)		Date	Time
TIFFANY PATE			BRIAN ELDREDGE		05/20/2017	2000

Division/Group Assignment List (ICS 204 WF)

1. Incident Name:			3.			
WEST MIMS			III		K	
2. Operational Period: DAY SHIFT 0730-1930						
Date/Time From: 05/21/2017 0730 SUN		Date/Time To: 05/21/2017 1930 SUN				
4. Operations Personnel						
PLANNING OPERATIONS CHIEF		MARK CRAIN MIKE DAVIS (T)		OPERATIONS CHIEF		J. DURRWACHTER, B. MONDAY (T) S. BOWMAN (T); L. SMITH (T)
BRANCH DIRECTOR		RON SMITH		DIVISION/GROUP SUPERVISOR		SUNBEAR VIERRA TOM ALLBRIGHT (T)
SAFETY		IVAN CUPP		AIR TACTICAL GROUP SUPERVISOR		MARK NUNEZ, KEN MCLAUGHLIN
6. Control Operations/Work Assignments:						
Task						
<ul style="list-style-type: none"> • Assist private landowners and coordinate preparation of timberlands adjacent to the division. • Respond to any new starts within the division. • Monitor fire activity and location within the swamp. • Refresh Swamp Edge Break. 						
Purpose						
<ul style="list-style-type: none"> • Keep fire west of Swamp Edge Break. 						
End State						
<ul style="list-style-type: none"> • Fire activity that threatens Swamp Edge Break has been detected and appropriate action has been initiated. • Fire is contained by adequate control line to reduce threat to escape; minimizing damage to private timberlands, private lands, and other resource values at risk. 						
7. Special Instructions:						
<p>For IA protocol see page 8</p> <p>Medical Emergency Channel: Command ETA for Ambulance to Scene: Air: 20 – 30 mins Ground: 10 - 15 mins Paved roads only. IWI – IC or approved person will use Channel 16 (Air Guard) for contact with air ambulance Air Ambulance landing zone to be determined by IWI – IC Utilize engines to provide dust abatement, as needed, prior to air ambulance landing</p>						
8. Division/Group Communication Summary						
Function	Channel	RX Frequency N/W	RX Tone/NAC	TX Frequency N/W	TX Tone/NAC	Mode
COMMAND	3	159.1200N	NONE	151.3700N	82.5	A
AIR TO GROUND	4	169.2000N	NONE	169.2000N	NONE	A
TACTICAL	13	159.4125N	NONE	159.4125N	NONE	A
AIR TO GROUND	14	166.6750N	NONE	166.6750N	NONE	A
AIR TO GROUND	15	169.1500N	NONE	169.1500N	NONE	A
AIR GUARD	16	168.6250N	NONE	168.6250N	110.9	A
9. Prepared By (Resource Unit Leader)			Approved By (Planning Section Chief)		Date	Time
TIFFANY PATE			BRIAN ELDREDGE		05/20/2017	2000

Division/Group Assignment List (ICS 204 WF)

1. Incident Name:			3.			
WEST MIMS			III		L	
2. Operational Period: DAY SHIFT 0730-1930						
Date/Time From: 05/21/2017 0730 SUN		Date/Time To: 05/21/2017 1930 SUN				
4. Operations Personnel						
PLANNING OPERATIONS CHEIF		MARC CRAIN MIKE DAVIS (T)		OPERATIONS CHIEF		J. DURRWACHTER; B. MONDAY (T) S. BOWMAN; L. SMITH (T)
BRANCH DIRECTOR		RON SMITH		DIVISION/GROUP SUPERVISOR		SAMMY MCFARLAND, SEAN BASS (T)
SAFETY		IVAN CUPP		AIR TACTICAL GROUP SUPERVISOR		MARK NUNEZ, KEN MCLAUGHLIN
5. Resources Assigned this Period						
Strike Team / Task Force / Resource Designator		LWD	Leader	Number Persons	Drop Off PT./Time	Pick Up PT./Time
TPL4 - UNIT #8191 - HUNTSVILLE E-570		05/25	CROCKETT PEGODA	2	EAST CAMP/0730	EAST CAMP/1930
TPL4 TX FOREST SERVICE E-471		05/25	TIMOTHY GILL	2	EAST CAMP/0730	EAST CAMP/1930
TPL4 - UNIT #6192 - NEW BOSTON E-467		05/25	LEE ANDERSEN	2	EAST CAMP/0730	EAST CAMP/1930
TPL4 - UNIT #7292 - JACKSONVILLE E-571		05/26	JACOB CROWLEY	2	EAST CAMP/0730	EAST CAMP/1930
DOZ2 - VIN# 922092 E-584		05/26	JOHN SIMMON	1	EAST CAMP/0730	EAST CAMP/1930
TFLD O-417		05/24	ERIC R HUGHES	1	EAST CAMP/0730	EAST CAMP/1930
TFLD (T) O-672		05/30	JAMIE TYSON	1	EAST CAMP/0730	EAST CAMP/1930
TFLD (T) O-670		06/01	MIKE BROD	1	EAST CAMP/0730	EAST CAMP/1930
HEQB O-643		05/29	JACOB GOEBEL	1	EAST CAMP/0730	EAST CAMP/1930
HEQB O-644		05/29	NEIL TRENTON	1	EAST CAMP/0730	EAST CAMP/1930
HEQB O-510		05/24	KEVIN DITMANSON	1	EAST CAMP/0730	EAST CAMP/1930
STEQ O-656		05/31	KEN COOPER	1	EAST CAMP/0730	EAST CAMP/1930
EMPF O-588 530-925-1267		05/27	MIKE FINCHAM	1	EAST CAMP/0730	EAST CAMP/1930
SOF2 O-493 505-429-3397		05/27	JAYMES SMITH	1	EAST CAMP/0730	EAST CAMP/1930
6. Control Operations/Work Assignments:						
8. Division/Group Communication Summary						
Function	Channel	RX Frequency N/W	RX Tone/NAC	TX Frequency N/W	TX Tone/NAC	Mode
COMMAND	3	159.1200N	NONE	151.3700N	82.5	A
AIR TO GROUND	4	169.2000N	NONE	169.2000N	NONE	A
TACTICAL	9	159.2850N	NONE	159.2850N	156.7	A
AIR TO GROUND	14	166.6750N	NONE	166.6750N	NONE	A
AIR TO GROUND	15	169.1500N	NONE	169.1500N	NONE	A
AIR GUARD	16	168.6250N	NONE	168.6250N	110.9	A
9. Prepared By (Resource Unit Leader)			Approved By (Planning Section Chief)		Date	Time
DONNA THOMAS			BRIAN ELDREDGE		05/20/2017	2000

Division/Group Assignment List (ICS 204 WF)

1. Incident Name:			3.			
WEST MIMS			III		L	
2. Operational Period: DAY SHIFT 0730-1930						
Date/Time From: 05/21/2017 0730 SUN		Date/Time To: 05/21/2017 1930 SUN				
4. Operations Personnel						
PLANNING OPERATIONS CHEIF		MARC CRAIN MIKE DAVIS (T)		OPERATIONS CHIEF		J. DURRWACHTER; B. MONDAY (T) S. BOWMAN; L. SMITH (T)
BRANCH DIRECTOR		RON SMITH		DIVISION/GROUP SUPERVISOR		SAMMY MCFARLAND, SEAN BASS (T)
SAFETY		IVAN CUPP		AIR TACTICAL GROUP SUPERVISOR		MARK NUNEZ, KEN MCLAUGHLIN
6. Control Operations/Work Assignments:						
Task						
<ul style="list-style-type: none"> • Assist private landowners and coordinate preparation of timberlands adjacent to the division. • Respond to any new starts within the division. • Monitor fire activity and location within the swamp. • Refresh Swamp Edge Break. 						
Purpose						
<ul style="list-style-type: none"> • Keep fire west of Swamp Edge Break. 						
End State						
<ul style="list-style-type: none"> • Fire activity that threatens Swamp Edge Break has been detected and appropriate action has been initiated. • Fire is contained by adequate control line to reduce threat to escape; minimizing damage to private timberlands, private lands, and other resource values at risk. • 						
7. Special Instructions:						
For IA protocol see page 8						
<p>Medical Emergency Channel: Command ETA for Ambulance to Scene: Air: 20 – 30 mins Ground: 10 - 15 mins Paved roads only. IWI – IC or approved person will use Channel 16 (Air Guard) for contact with air ambulance Air Ambulance landing zone to be determined by IWI – IC Utilize engines to provide dust abatement, as needed, prior to air ambulance landing</p>						
8. Division/Group Communication Summary						
Function	Channel	RX Frequency N/W	RX Tone/NAC	TX Frequency N/W	TX Tone/NAC	Mode
COMMAND	3	159.1200N	NONE	151.3700N	82.5	A
AIR TO GROUND	4	169.2000N	NONE	169.2000N	NONE	A
TACTICAL	9	159.2850N	NONE	159.2850N	156.7	A
AIR TO GROUND	14	166.6750N	NONE	166.6750N	NONE	A
AIR TO GROUND	15	169.1500N	NONE	169.1500N	NONE	A
AIR GUARD	16	168.6250N	NONE	168.6250N	110.9	A
9. Prepared By (Resource Unit Leader)			Approved By (Planning Section Chief)		Date	Time
DONNA THOMAS			BRIAN ELDREDGE		05/20/2017	2000

Division/Group Assignment List (ICS 204 WF)

1. Incident Name:			3.			
WEST MIMS			Branch:		Division/Group:	
2. Operational Period: DAY SHIFT 0730-1930			III		M	
Date/Time From: 05/21/2017 0730 SUN		Date/Time To: 05/21/2017 1930 SUN				
4. Operations Personnel						
PLANNING OPERATIONS CHIEF		S. WEAVER, P. DANIELS (T) M. DAVIS (T), M. CRAIN		OPERATIONS CHIEF		J. DURRWACHTER, B. MONDAY (T) L. SMITH (T), S. BOWMAN (T)
BRANCH DIRECTOR		RON SMITH		DIVISION/GROUP SUPERVISOR		MARVIN ROYBAL, JASON LAGO (T)
SAFETY		IVAN CUPP		AIR TACTICAL GROUP SUPERVISOR		MARK NUNEZ, KEN MCLAUGHLIN
5. Resources Assigned this Period						
Strike Team / Task Force / Resource Designator		LWD	Leader	Number Persons	Drop Off PT./Time	Pick Up PT./Time
ENG6 - ATTACK ONE FIRE MGMT SERV E-257		05/28	JOHN HOELLERICH	2	EAST CAMP/0730	EAST CAMP/1930
ENG6 - AR-OZF - SYL - E-671 E-283		05/24	LARRY VANDIVER	3	EAST CAMP/0730	EAST CAMP/1930
ENG6 - NAX - BRUSH 7-4 E-848		05/31	MAX BORINO	3	EAST CAMP/0730	EAST CAMP/1930
ENG6 - SCHOLL FIRE & FUELS MANAGEMENT, INC. - 2 E-263		06/02	ROBERT MAHARREY	3	EAST CAMP/0730	EAST CAMP/1930
TPLW2 - GFC1417 E-665		05/24	ERIC SMITH	1	EAST CAMP/0730	EAST CAMP/1930
TPL3 - TRACTOR - GFC4202120 E-666		05/25	STEVEN JOHNSON	1	EAST CAMP/0730	EAST CAMP/1930
TPL3 - TRACTOR PLOW - T3 - GFC2623 E-667		05/25	DAVIS STEEDLEY	1	EAST CAMP/0730	EAST CAMP/1930
WTS2 WET 'N RED, LLC - 58592 E-365		05/23	ALLEN WEST	2	EAST CAMP/0730	EAST CAMP/1930
HEQB O-601		05/27	JASON B FOREMAN	1	EAST CAMP/0730	EAST CAMP/1930
STEQ O-512		05/25	JASON HARRIS	1	EAST CAMP/0730	EAST CAMP/1930
EMPF O-560 928-235-7059		05/26	LIONEL VAN GURP	1	EAST CAMP/0730	EAST CAMP/1930
SOF2 O-195 520-591-2434		05/26	JOHN MCGEE	1	EAST CAMP/0730	EAST CAMP/1930
8. Division/Group Communication Summary						
Function	Channel	RX Frequency N/W	RX Tone/NAC	TX Frequency N/W	TX Tone/NAC	Mode
COMMAND	3	159.1200N	NONE	151.3700N	82.5	A
AIR TO GROUND	4	169.2000N	NONE	169.2000N	NONE	A
TACTICAL	9	159.2850N	NONE	159.2850N	156.7	A
AIR TO GROUND	14	166.6750N	NONE	166.6750N	NONE	A
AIR TO GROUND	15	169.1500N	NONE	169.1500N	NONE	A
AIR GUARD	16	168.6250N	NONE	168.6250N	110.9	A
9. Prepared By (Resource Unit Leader)			Approved By (Planning Section Chief)		Date	Time
DONNA THOMAS			BRIAN ELDREDGE		05/20/2017	2000

Division/Group Assignment List (ICS 204 WF)

1. Incident Name:			3.			
WEST MIMS			III		M	
2. Operational Period: DAY SHIFT 0730-1930						
Date/Time From: 05/21/2017 0730 SUN		Date/Time To: 05/21/2017 1930 SUN				
4. Operations Personnel						
PLANNING OPERATIONS CHIEF		S. WEAVER, P. DANIELS (T) M. DAVIS (T), M. CRAIN		OPERATIONS CHIEF		J. DURRWACHTER, B. MONDAY (T) L. SMITH (T), S. BOWMAN (T)
BRANCH DIRECTOR		RON SMITH		DIVISION/GROUP SUPERVISOR		MARVIN ROYBAL, JASON LAGO (T)
SAFETY		IVAN CUPP		AIR TACTICAL GROUP SUPERVISOR		MARK NUNEZ, KEN MCLAUGHLIN
6. Control Operations/Work Assignments:						
Task						
<ul style="list-style-type: none"> • Prepare for strategic firing of control lines. • Respond to any new starts within the division. • Patrol and mop up fuels appropriate to fuel type and anticipated weather and fire behavior. 						
Purpose						
<ul style="list-style-type: none"> • Keep fire west of Swamp Edge Break. 						
End State						
<ul style="list-style-type: none"> • Fire is contained by adequate control line to reduce threat to escape; minimizing damage to private timberlands, private lands, and other resource values at risk. 						
7. Special Instructions:						
Ensure LCES is in place before operations begin and stay hydrated. Drive defensively and with lights on at all times. Identify escape routes.						
For IA protocol see page 8						
Medical Emergency Channel: Command ETA for Ambulance to Scene: Air: 20 – 30 mins Ground: 10 - 15 mins Paved roads only. IWI – IC or approved person will use Channel 16 (Air Guard) for contact with air ambulance Air Ambulance landing zone to be determined by IWI – IC Utilize engines to provide dust abatement, as needed, prior to air ambulance landing						
8. Division/Group Communication Summary						
Function	Channel	RX Frequency N/W	RX Tone/NAC	TX Frequency N/W	TX Tone/NAC	Mode
COMMAND	3	159.1200N	NONE	151.3700N	82.5	A
AIR TO GROUND	4	169.2000N	NONE	169.2000N	NONE	A
TACTICAL	9	159.2850N	NONE	159.2850N	156.7	A
AIR TO GROUND	14	166.6750N	NONE	166.6750N	NONE	A
AIR TO GROUND	15	169.1500N	NONE	169.1500N	NONE	A
AIR GUARD	16	168.6250N	NONE	168.6250N	110.9	A
9. Prepared By (Resource Unit Leader)			Approved By (Planning Section Chief)		Date	Time
DONNA THOMAS			BRIAN ELDREDGE		05/20/2017	2000

Division/Group Assignment List (ICS 204 WF)

1. Incident Name:			3.			
WEST MIMS			III	N		
2. Operational Period: DAY SHIFT 0730-1930						
Date/Time From: 05/21/2017 0730	SUN	Date/Time To: 05/21/2017 1930	SUN			
4. Operations Personnel						
PLANNING OPERATIONS CHIEF		S. WEAVER, M. CRAIN, P. DANIELS (T) M. DAVIS (T)		OPERATIONS CHIEF		J. DURRWACHTER; L. SMITH (T) S. BOWMAN, B. MONDAY (T)
BRANCH DIRECTOR		RON SMITH		DIVISION/GROUP SUPERVISOR		KAREN SCHOLL CHRIS RANKIN (T)
SAFETY		IVAN CUPP		AIR TACTICAL GROUP SUPERVISOR		MARK NUNEZ, KEN MCLAUGHLIN
6. Control Operations/Work Assignments:						
Task						
<ul style="list-style-type: none"> • Respond to any new starts within the division. • Patrol and mop up fuels appropriate to fuel type and anticipated weather and fire behavior. 						
Purpose						
<ul style="list-style-type: none"> • Keep fire west of Swamp Edge Break and south of Crawford Road. 						
End State						
<ul style="list-style-type: none"> • Fire is contained by adequate control line to reduce threat to escape; minimizing damage to private timberlands, private lands, and other resource values at risk. 						
7. Special Instructions:						
Ensure LCES is in place before operations begin and stay hydrated. Drive defensively and with lights on at all times. Identify escape routes.						
For IA protocol see page 8						
Medical Emergency Channel: Command ETA for Ambulance to Scene: Air: 20 – 30 mins Ground: 10 - 15 mins Paved roads only. IWI – IC or approved person will use Channel 16 (Air Guard) for contact with air ambulance Air Ambulance landing zone to be determined by IWI – IC Utilize engines to provide dust abatement, as needed, prior to air ambulance landing						
8. Division/Group Communication Summary						
Function	Channel	RX Frequency N/W	RX Tone/NAC	TX Frequency N/W	TX Tone/NAC	Mode
COMMAND	3	159.1200N	NONE	151.3700N	82.5	A
AIR TO GROUND	4	169.2000N	NONE	169.2000N	NONE	A
TACTICAL	10	168.3500N	NONE	168.3500N	NONE	A
AIR TO GROUND	14	166.6750N	NONE	166.6750N	NONE	A
AIR TO GROUND	15	169.1500N	NONE	169.1500N	NONE	A
AIR GUARD	16	168.6250N	NONE	168.6250N	110.9	A
9. Prepared By (Resource Unit Leader)			Approved By (Planning Section Chief)		Date	Time
DONNA THOMAS			BRIAN ELDREDGE		05/20/2017	2000

Division/Group Assignment List (ICS 204 WF)

1. Incident Name:			3.			
WEST MIMS			Branch:		Division/Group:	
2. Operational Period: DAY SHIFT 0730-1930			III		O	
Date/Time From: 05/21/2017 0730 SUN		Date/Time To: 05/21/2017 1930 SUN				
4. Operations Personnel						
PLANNING OPERATIONS CHIEF		S. WEAVER, M. CRAIN, P. DANIELS(T) M. DAVIS (T)		OPERATIONS CHIEF		J. DURRWACHTER, B. MONDAY (T) L. SMITH (T), S. BOWMAN (T)
BRANCH DIRECTOR		RON SMITH		DIVISION/GROUP SUPERVISOR		ROBERT THORP MICHAEL GUE (T)
SAFETY		IVAN CUPP		AIR TACTICAL GROUP SUPERVISOR		MARK NUNEZ, KEN MCLAUGHLIN
5. Resources Assigned this Period						
Strike Team / Task Force / Resource Designator		LWD	Leader	Number Persons	Drop Off PT./Time	Pick Up PT./Time
MODULE - SUPPRESSION - BIA SUPPRESSION MODULE #2 O-522		05/25	SCOTTY KOPEPASSAH	11	EAST CAMP/0730	EAST CAMP/1930
ENG6 - 161 E-656		05/26	TOD BENNETT	3	EAST CAMP/0730	EAST CAMP/1930
ENG6 - FWS - 462 E-261		05/21	REBECCA GOOSMAN	3	EAST CAMP/0730	EAST CAMP/1930
ENG6 - 2661 - BRAZORIA REFUGE E-657		05/27	DAVID SIGAFOOSE	2	EAST CAMP/0730	EAST CAMP/1930
ENG6 - 611 E-663		05/29	JORDAN BLACK	3	EAST CAMP/0730	EAST CAMP/1930
ENG6 - NMLNF621 - SACRAMENTO RD E-765		05/29	TIM MCELHNEY	4	EAST CAMP/0730	EAST CAMP/1930
ENG6 J3 CONTRACTING - 07 - VIN# UNLISTED E-732		05/30	ANTHONY PARLIC	3	EAST CAMP/0730	EAST CAMP/1930
ENG6 - BOULDER COUNTY SHERIFF - ENGINE 6531 E-847		05/30	KENYON SHEPHARD	6	EAST CAMP/0730	EAST CAMP/1930
ENG6 J3 CONTRACTING - 12 - VIN# 002974 E-733		05/30	LANCE WOLLEBAEK	3	EAST CAMP/0730	EAST CAMP/1930
ENG6 - 151 TEXAS FIRE RESOURCES E-260		06/04	LARRY WEAVER	3	EAST CAMP/0730	EAST CAMP/1930
WTS2 - BONNELL SAND & GRAVEL I E-366		05/22	JOE BONNELL	1	EAST CAMP/0730	EAST CAMP/1930
TFLD O-635		05/29	BRIAN ANDERSON	1	EAST CAMP/0730	EAST CAMP/1930
TFLD O-592		05/27	DALE E MIDDLETON	1	EAST CAMP/0730	EAST CAMP/1930
STEQ O-679		06/03	DAVID BROWN	1	EAST CAMP/0730	EAST CAMP/1930
STEQ (T) O-573		05/27	OLIVER M WAHLQUIST	1	EAST CAMP/0730	EAST CAMP/1930
TPL3 - TRACTOR PLOW - T3 - GFC3266 E-370		06/02	KEVIN LARRY ANDERSON	2	EAST CAMP/0730	EAST CAMP/1930
8. Division/Group Communication Summary						
Function	Channel	RX Frequency N/W	RX Tone/NAC	TX Frequency N/W	TX Tone/NAC	Mode
COMMAND	3	159.1200N	NONE	151.3700N	82.5	A
AIR TO GROUND	4	169.2000N	NONE	169.2000N	NONE	A
TACTICAL	11	163.7125N	NONE	163.7125N	NONE	A
AIR TO GROUND	14	166.6750N	NONE	166.6750N	NONE	A
AIR TO GROUND	15	169.1500N	NONE	169.1500N	NONE	A
AIR GUARD	16	168.6250N	NONE	168.6250N	110.9	A
9. Prepared By (Resource Unit Leader)			Approved By (Planning Section Chief)		Date	Time
DONNA THOMAS			BRIAN ELDREDGE		05/20/2017	2000

Division/Group Assignment List (ICS 204 WF)

1. Incident Name:			3.			
WEST MIMS			Branch:		Division/Group:	
2. Operational Period: DAY SHIFT 0730-1930			III		O	
Date/Time From: 05/21/2017 0730 SUN		Date/Time To: 05/21/2017 1930 SUN				
4. Operations Personnel						
PLANNING OPERATIONS CHIEF		S. WEAVER, M. CRAIN, P. DANIELS(T) M. DAVIS (T)		OPERATIONS CHIEF		J. DURRWACHTER, B. MONDAY (T) L. SMITH (T), S. BOWMAN (T)
BRANCH DIRECTOR		RON SMITH		DIVISION/GROUP SUPERVISOR		ROBERT THORP MICHAEL GUE (T)
SAFETY		IVAN CUPP		AIR TACTICAL GROUP SUPERVISOR		MARK NUNEZ, KEN MCLAUGHLIN
5. Resources Assigned this Period						
Strike Team / Task Force / Resource Designator		LWD	Leader	Number Persons	Drop Off PT./Time	Pick Up PT./Time
TPL2 - TRACTOR PLOW - T2 - GFC3307 E-371		06/03	CHRIS W MULLIS	2	EAST CAMP/0730	EAST CAMP/1930
TPL2 - TRACTOR PLOW - T2 - GFC3295 E-372		06/03	SAMUAL CHRISTOPHER LITTLE	2	EAST CAMP/0730	EAST CAMP/1930
EMPF W/UTV O-346 229--561-4224		05/25	DEAN CARPENTER	1	EAST CAMP/0730	EAST CAMP/1930
SOF2 O-195 520-591-2434		05/25	JOHN MCGEE	1	EAST CAMP/0730	EAST CAMP/1930
6. Control Operations/Work Assignments:						
Task						
<ul style="list-style-type: none"> • Respond to any new starts within the division. • Patrol and mop up fuels appropriate to fuel type and anticipated weather and fire behavior. • 						
Purpose						
<ul style="list-style-type: none"> • Keep fire within established fire containment lines. • 						
8. Division/Group Communication Summary						
Function	Channel	RX Frequency N/W	RX Tone/NAC	TX Frequency N/W	TX Tone/NAC	Mode
COMMAND	3	159.1200N	NONE	151.3700N	82.5	A
AIR TO GROUND	4	169.2000N	NONE	169.2000N	NONE	A
TACTICAL	11	163.7125N	NONE	163.7125N	NONE	A
AIR TO GROUND	14	166.6750N	NONE	166.6750N	NONE	A
AIR TO GROUND	15	169.1500N	NONE	169.1500N	NONE	A
AIR GUARD	16	168.6250N	NONE	168.6250N	110.9	A
9. Prepared By (Resource Unit Leader)			Approved By (Planning Section Chief)		Date	Time
DONNA THOMAS			BRIAN ELDREDGE		05/20/2017	2000

Division/Group Assignment List (ICS 204 WF)

1. Incident Name:			3.			
WEST MIMS			III		O	
2. Operational Period: DAY SHIFT 0730-1930						
Date/Time From: 05/21/2017 0730 SUN		Date/Time To: 05/21/2017 1930 SUN				
4. Operations Personnel						
PLANNING OPERATIONS CHIEF		S. WEAVER, M. CRAIN, P. DANIELS(T) M. DAVIS (T)		OPERATIONS CHIEF		J. DURRWACHTER, B. MONDAY (T) L. SMITH (T), S. BOWMAN (T)
BRANCH DIRECTOR		RON SMITH		DIVISION/GROUP SUPERVISOR		ROBERT THORP MICHAEL GUE (T)
SAFETY		IVAN CUPP		AIR TACTICAL GROUP SUPERVISOR		MARK NUNEZ, KEN MCLAUGHLIN
6. Control Operations/Work Assignments:						
End State						
<ul style="list-style-type: none"> • Fire is contained by adequate control line to reduce threat to escape; minimizing damage to private timberlands, private lands, and other resource values at risk. 						
7. Special Instructions:						
Ensure LCES are in place before operations begin and stay hydrated. Drive defensively and with lights on at all times. Identify escape routes.						
For IA protocol see page 8						
Medical Emergency Channel: Command ETA for Ambulance to Scene: Air: 20 – 30 mins Ground: 10 - 15 mins Paved roads only. IWI – IC or approved person will use Channel 16 (Air Guard) for contact with air ambulance Air Ambulance landing zone to be determined by IWI – IC Utilize engines to provide dust abatement, as needed, prior to air ambulance landing						
8. Division/Group Communication Summary						
Function	Channel	RX Frequency N/W	RX Tone/NAC	TX Frequency N/W	TX Tone/NAC	Mode
COMMAND	3	159.1200N	NONE	151.3700N	82.5	A
AIR TO GROUND	4	169.2000N	NONE	169.2000N	NONE	A
TACTICAL	11	163.7125N	NONE	163.7125N	NONE	A
AIR TO GROUND	14	166.6750N	NONE	166.6750N	NONE	A
AIR TO GROUND	15	169.1500N	NONE	169.1500N	NONE	A
AIR GUARD	16	168.6250N	NONE	168.6250N	110.9	A
9. Prepared By (Resource Unit Leader)			Approved By (Planning Section Chief)		Date	Time
DONNA THOMAS			BRIAN ELDREDGE		05/20/2017	2000

Division/Group Assignment List (ICS 204 WF)

1. Incident Name:			3.			
WEST MIMS			III		STAGING	
2. Operational Period: DAY SHIFT 0730-1930						
Date/Time From: 05/21/2017 0730 SUN		Date/Time To: 05/21/2017 1930 SUN				
4. Operations Personnel						
PLANNING OPERATIONS CHIEF		STEVE WEAVER, MARC CRAIN J.BRAND (T), M.DAVIS (T), P.DANIELS		OPERATIONS CHIEF		J. DURRWACHTER, B. MONDAY (T) S. BOWMAN, L. SMITH (T)
BRANCH DIRECTOR		RON SMITH		STAGING AREA MANAGER		ADAM DUMMER CHRISTOPHER RUDD
SAFETY		IVAN CUPP		AIR TACTICAL GROUP SUPERVISOR		MARK NUNEZ, KEN MCLAUGHLIN
5. Resources Assigned this Period						
Strike Team / Task Force / Resource Designator		LWD	Leader	Number Persons	Drop Off PT./Time	Pick Up PT./Time
CREW - T2IA - NMCIF - ACOMA #1 C-12		05/25	ANDREW M HENRY	21	EAST CAMP/0730	EAST CAMP/1930
ENG6 - BUSH FIRE - VIN# 260743 E-541		05/23	ROBBIE ROBERTSON	2	EAST CAMP/0730	EAST CAMP/1930
ENGINE - T6 - J3 CONTRACTING, LLC - B32076 - 08 E-768		05/28	REID BARNEY	6	EAST CAMP/0730	EAST CAMP/1930
ENG6 BRUSH 143 E-769		05/28	RICARDO RENTERIA	6	EAST CAMP/0730	EAST CAMP/1930
PICKUP E-651		05/24	KELLY TOWE	1	EAST CAMP/0730	EAST CAMP/1930
ENG6 COYOTE 612 E-762		05/28	RICHARD MARTINEZ	3	EAST CAMP/0730	EAST CAMP/1930
ENG6 - ATTACK-ONE FIRE MGMT SERVICES INC E-537		05/22	WES COLEMAN	2	EAST CAMP/0730	EAST CAMP/1930
ENG6 - VIN# C35321 E-723		05/26	JESSE SCHMIDT	3	EAST CAMP/0730	EAST CAMP/1930
ENG6 J3 CON 14 - VIN# 13309 E-734		05/30	MATT FREDERICK	3	EAST CAMP/0730	EAST CAMP/1930
ENG6 J3 CON 17 - VIN# 20193 E-735		05/30	BRIAN FERRENS	3	EAST CAMP/0730	EAST CAMP/1930
ENG5 - AMER WF SUPP E-757		05/29	JEFFERY STANOVICH	3	EAST CAMP/0730	EAST CAMP/1930
ENG6 COYOTE 612 E-762		05/28	RICHARD MARTINEZ	6	EAST CAMP/0730	EAST CAMP/1930
ENG6 6064 E-764		05/27	GEORGE GALLARDO	3	EAST CAMP/0730	EAST CAMP/1930
ENG6 - NMCIF - ENGINE 652 E-766		05/28	BRAD TAUSAN	3	EAST CAMP/0730	EAST CAMP/1930
ENG6 - TIMMERMANN WF B001 E-841		05/29	JEREMIAH VAN BLACK	3	EAST CAMP/0730	EAST CAMP/1930
8. Division/Group Communication Summary						
Function	Channel	RX Frequency N/W	RX Tone/NAC	TX Frequency N/W	TX Tone/NAC	Mode
COMMAND	3	159.1200N	NONE	151.3700N	82.5	A
AIR TO GROUND	4	169.2000N	NONE	169.2000N	NONE	A
TACTICAL	10	168.3500N	NONE	168.3500N	NONE	A
AIR TO GROUND	14	166.6750N	NONE	166.6750N	NONE	A
AIR TO GROUND	15	169.1500N	NONE	169.1500N	NONE	A
AIR GUARD	16	168.6250N	NONE	168.6250N	110.9	A
9. Prepared By (Resource Unit Leader)			Approved By (Planning Section Chief)		Date	Time
DONNA THOMAS			BRIAN ELDREDGE		05/20/2017	2000

Division/Group Assignment List (ICS 204 WF)

1. Incident Name:			3.			
WEST MIMS			III		STAGING	
2. Operational Period: DAY SHIFT 0730-1930						
Date/Time From: 05/21/2017 0730 SUN		Date/Time To: 05/21/2017 1930 SUN				
4. Operations Personnel						
PLANNING OPERATIONS CHIEF		STEVE WEAVER, MARC CRAIN J.BRAND (T), M.DAVIS (T), P.DANIELS		OPERATIONS CHIEF		J. DURRWACHTER, B. MONDAY (T) S. BOWMAN, L. SMITH (T)
BRANCH DIRECTOR		RON SMITH		STAGING AREA MANAGER		ADAM DUMMER CHRISTOPHER RUDD
SAFETY		IVAN CUPP		AIR TACTICAL GROUP SUPERVISOR		MARK NUNEZ, KEN MCLAUGHLIN
5. Resources Assigned this Period						
Strike Team / Task Force / Resource Designator		LWD	Leader	Number Persons	Drop Off PT./Time	Pick Up PT./Time
ENG6 - KANOUSE OUTDOOR RESTORATION - B50652 - K E-842		05/29	MATTHEW DAVIS	3	EAST CAMP/0730	EAST CAMP/1930
ENG6 - NC-NCF E-631 E-534		05/23	JAMES CHERRY	3	EAST CAMP/0730	EAST CAMP/1930
STEQ (T) O-573		05/26	OLIVER M WAHLQUIST	1	EAST CAMP/0730	EAST CAMP/1930
STEN O-605		05/28	COURTNEY WENZEL	1	EAST CAMP/0730	EAST CAMP/1930
EMPF E-375		05/23	PAUL PUGH	1	EAST CAMP/0730	EAST CAMP/1930
8. Division/Group Communication Summary						
Function	Channel	RX Frequency N/W	RX Tone/NAC	TX Frequency N/W	TX Tone/NAC	Mode
COMMAND	3	159.1200N	NONE	151.3700N	82.5	A
AIR TO GROUND	4	169.2000N	NONE	169.2000N	NONE	A
TACTICAL	10	168.3500N	NONE	168.3500N	NONE	A
AIR TO GROUND	14	166.6750N	NONE	166.6750N	NONE	A
AIR TO GROUND	15	169.1500N	NONE	169.1500N	NONE	A
AIR GUARD	16	168.6250N	NONE	168.6250N	110.9	A
9. Prepared By (Resource Unit Leader)			Approved By (Planning Section Chief)		Date	Time
DONNA THOMAS			BRIAN ELDREDGE		05/20/2017	2000

Division/Group Assignment List (ICS 204 WF)

1. Incident Name:			3.			
WEST MIMS			III	Division/Group: STAGING		
2. Operational Period: DAY SHIFT 0730-1930						
Date/Time From: 05/21/2017 0730 SUN		Date/Time To: 05/21/2017 1930 SUN				
4. Operations Personnel						
PLANNING OPERATIONS CHIEF		STEVE WEAVER, MARC CRAIN J.BRAND (T), M.DAVIS (T), P.DANIELS		OPERATIONS CHIEF		J. DURRWACHTER, B. MONDAY (T) S. BOWMAN, L. SMITH (T)
BRANCH DIRECTOR		RON SMITH		STAGING AREA MANAGER		ADAM DUMMER CHRISTOPHER RUDD
SAFETY		IVAN CUPP		AIR TACTICAL GROUP SUPERVISOR		MARK NUNEZ, KEN MCLAUGHLIN
6. Control Operations/Work Assignments:						
Task						
<ul style="list-style-type: none"> • Assess availability of surplus resources for reassignment. • Advise Planning Operations which resources are surplus and available to reallocate within incident. 						
Purpose						
<ul style="list-style-type: none"> • To provide logistical support for resources pending reassignment or demobilization. 						
End State						
<ul style="list-style-type: none"> • A pool of resources are readily available for reassignment or demobilization. 						
7. Special Instructions:						
<p>For IA protocol see page 8</p> <p>Staging Area Manager Phone Numbers:</p> <p>ADAM DUMMER 831-238-0991 CHRISTOPHER RUDD 541-660-0634</p> <p>Medical Emergency Channel: Command ETA for Ambulance to Scene: Air: 20 – 30 mins Ground: 10 - 15 mins Paved roads only. IWI – IC or approved person will use Channel 16 (Air Guard) for contact with air ambulance Air Ambulance landing zone to be determined by IWI – IC Utilize engines to provide dust abatement, as needed, prior to air ambulance landing</p>						
8. Division/Group Communication Summary						
Function	Channel	RX Frequency N/W	RX Tone/NAC	TX Frequency N/W	TX Tone/NAC	Mode
COMMAND	3	159.1200N	NONE	151.3700N	82.5	A
AIR TO GROUND	4	169.2000N	NONE	169.2000N	NONE	A
TACTICAL	10	168.3500N	NONE	168.3500N	NONE	A
AIR TO GROUND	14	166.6750N	NONE	166.6750N	NONE	A
AIR TO GROUND	15	169.1500N	NONE	169.1500N	NONE	A
AIR GUARD	16	168.6250N	NONE	168.6250N	110.9	A
9. Prepared By (Resource Unit Leader)			Approved By (Planning Section Chief)		Date	Time
DONNA THOMAS			BRIAN ELDREDGE		05/20/2017	2000

Division/Group Assignment List (ICS 204 WF)

1. Incident Name:			3.			
WEST MIMS			III		Division/Group: STRUCTURE PROTECTION	
2. Operational Period: DAY SHIFT 0730-1930						
Date/Time From: 05/21/2017 0730 SUN		Date/Time To: 05/21/2017 1930 SUN				
4. Operations Personnel						
PLANNING OPERATIONS CHIEF		S. WEAVER, M. CRAIN, P. DANIELS (T) M. DAVIS (T)		OPERATIONS CHIEF		J. DURRWACHTER, B. MONDAY (T) S. BOWMAN (T) , L. SMITH (T)
BRANCH DIRECTOR		RON SMITH		STRUCTURE PROTECTION		RANDY JONES AARON GAY (T)
SAFETY		IVAN CUPP		AIR TACTICAL GROUP SUPERVISOR		MARK NUNEZ, KEN MCLAUGHLIN
5. Resources Assigned this Period						
Strike Team / Task Force / Resource Designator		LWD	Leader	Number Persons	Drop Off PT./Time	Pick Up PT./Time
ENG6 OK-CNA #0861 E-411		05/23	RUBEN CHUCKLUCK	3	EAST CAMP/0730	EAST CAMP/1930
ENG6 #0661 E-412		06/02	ERIC EBY	3	EAST CAMP/0730	EAST CAMP/1930
ENG3 -361- CA-SHF E-423		06/02	JOHN WALKER	5	EAST CAMP/0730	EAST CAMP/1930
ENG3 - 51-CA-SHF E-422		06/03	RYAN MEANS	5	EAST CAMP/0730	EAST CAMP/1930
ENG6 E-483		05/24	TONY REBO	4	EAST CAMP/0730	EAST CAMP/1930
ENG6 - E2693 TWIN FALLS E-844		06/01	CHRIS BELLISTON	3	EAST CAMP/0730	EAST CAMP/1930
TPL3 ORANGE SPRINGS CONSTRUCTION, INC - E-481		05/22	LESLIE JETER	2	EAST CAMP/0730	EAST CAMP/1930
BHOE JD 6415 - ROT RANCH E-73		05/28	DARRELL CLARK	1	EAST CAMP/0730	EAST CAMP/1930
MAST ROT RANCH E-74		05/28	WESLEY WOOD	1	EAST CAMP/0730	EAST CAMP/1930
TFLD O-650		05/30	JAMES SPARROW	1	EAST CAMP/0730	EAST CAMP/1930
HEQB O-646		05/29	CHAD TUSS	1	EAST CAMP/0730	EAST CAMP/1930
STEQ O-421		05/23	MARIO MARQUEZ	1	EAST CAMP/0730	EAST CAMP/1930
STEN O-657		05/30	JERRY VAN DYNE	1	EAST CAMP/0730	EAST CAMP/1930
SOF2 O-539 575-574-2064		05/27	PAUL BOUCHER	1	EAST CAMP/0730	EAST CAMP/1930
8. Division/Group Communication Summary						
Function	Channel	RX Frequency N/W	RX Tone/NAC	TX Frequency N/W	TX Tone/NAC	Mode
COMMAND	3	159.1200N	NONE	151.3700N	82.5	A
AIR TO GROUND	4	169.2000N	NONE	169.2000N	NONE	A
COMMAND	8	159.2700N	156.7	151.1000N	123.0	A
TACTICAL	11	163.7125N	NONE	163.7125N	NONE	A
AIR TO GROUND	14	166.6750N	NONE	166.6750N	NONE	A
AIR TO GROUND	15	169.1500N	NONE	169.1500N	NONE	A
AIR GUARD	16	168.6250N	NONE	168.6250N	110.9	A
9. Prepared By (Resource Unit Leader)			Approved By (Planning Section Chief)		Date	Time
MISSY FORDER			BRIAN ELDREDGE		05/20/2017	2000

Division/Group Assignment List (ICS 204 WF)

1. Incident Name:			3.				
WEST MIMS			III	Branch:		Division/Group:	
2. Operational Period: DAY SHIFT 0730-1930				III		STRUCTURE PROTECTION	
Date/Time From: 05/21/2017 0730 SUN		Date/Time To: 05/21/2017 1930 SUN					
4. Operations Personnel							
PLANNING OPERATIONS CHIEF		S. WEAVER, M. CRAIN, P. DANIELS (T) M. DAVIS (T)		OPERATIONS CHIEF		J. DURRWACHTER, B. MONDAY (T) S. BOWMAN (T) , L. SMITH (T)	
BRANCH DIRECTOR		RON SMITH		STRUCTURE PROTECTION		RANDY JONES AARON GAY (T)	
SAFETY		IVAN CUPP		AIR TACTICAL GROUP SUPERVISOR		MARK NUNEZ, KEN MCLAUGHLIN	
6. Control Operations/Work Assignments:							
Task							
<ul style="list-style-type: none"> • Provide structure protection for the community of St. George. • Implement structure protection efforts within Branch III and IV as needed. 							
Purpose							
<ul style="list-style-type: none"> • Ensure timely response to protect human life, property, and infrastructure. 							
End State							
<ul style="list-style-type: none"> • Fire is contained by adequate control line to reduce threat to escape; minimizing damage to private timberlands, private lands, and other resource values at risk. 							
7. Special Instructions:							
Coordinate with Charlton County Emergency Management 912-390-2022.							
For IA protocol see page 8							
Medical Emergency Channel: Command							
ETA for Ambulance to Scene:							
Air: 20 – 30 mins							
Ground: 10 - 15 mins Paved roads only.							
IWI – IC or approved person will use Channel 16 (Air Guard) for contact with air ambulance							
Air Ambulance landing zone to be determined by IWI – IC							
Utilize engines to provide dust abatement, as needed, prior to air ambulance landing							
8. Division/Group Communication Summary							
Function	Channel	RX Frequency N/W	RX Tone/NAC	TX Frequency N/W	TX Tone/NAC	Mode	
COMMAND	3	159.1200N	NONE	151.3700N	82.5	A	
AIR TO GROUND	4	169.2000N	NONE	169.2000N	NONE	A	
COMMAND	8	159.2700N	156.7	151.1000N	123.0	A	
TACTICAL	11	163.7125N	NONE	163.7125N	NONE	A	
AIR TO GROUND	14	166.6750N	NONE	166.6750N	NONE	A	
AIR TO GROUND	15	169.1500N	NONE	169.1500N	NONE	A	
AIR GUARD	16	168.6250N	NONE	168.6250N	110.9	A	
9. Prepared By (Resource Unit Leader)			Approved By (Planning Section Chief)			Date	
MISSY FORDER			BRIAN ELDREDGE			05/20/2017	
						2000	

Division/Group Assignment List (ICS 204 WF)

1. Incident Name:			3.			
WEST MIMS			IV		A	
2. Operational Period: DAY SHIFT 0730-1930						
Date/Time From: 05/21/2017 0730 SUN		Date/Time To: 05/21/2017 1930 SUN				
4. Operations Personnel						
PLANNING OPERATIONS CHIEF		S. WEAVER, P. DANIELS (T) M. DAVIS (T), MARC CRAIN		OPERATIONS CHIEF		J. DURRWACHTER, B. MONDAY (T) L. SMITH (T), S. BOWMAN (T)
BRANCH DIRECTOR		STEVE MILLER		DIVISION/GROUP SUPERVISOR		HANS RUDOLF; MARVIN ROYBAL THOMAS TALBOT, JEFF BOSTWICK (T)
SAFETY		IVAN CUPP		AIR TACTICAL GROUP SUPERVISOR		MARK NUNEZ, KEN MCLAUGHLIN
5. Resources Assigned this Period						
Strike Team / Task Force / Resource Designator		LWD	Leader	Number Persons	Drop Off PT./Time	Pick Up PT./Time
ENG3 - WEST METRO - BRUSH 39 E-277		05/23	BRADLEY NELSON	4	EAST CAMP/0730	EAST CAMP/1930
ENG3 - DEER MOUNTAIN FPD - ENGINE 12 E-280		06/05	JOSEPH CRAIG WATTS	3	EAST CAMP/0730	EAST CAMP/1930
ENG6 - KNF - FSD3 - 631 E-285		05/31	ADAUTO, JULIAN	5	EAST CAMP/0730	EAST CAMP/1930
ENG6 - TGF FORESTRY AND FIRE, INC. - C94783 - E-287		05/22	JASON SARTIN	3	EAST CAMP/0730	EAST CAMP/1930
ENG6 - WILDLANDS FIRE SERVICE INC - C93328 - 5 E-539		05/24	DAVID HOGREFE	3	EAST CAMP/0730	EAST CAMP/1930
ENG6 - GFC4201278 E-706		05/25	DOUG ANDREWS	3	EAST CAMP/0730	EAST CAMP/1930
ENG6 - 6171 E-77		05/21	MARK CLAY	3	EAST CAMP/0730	EAST CAMP/1930
ENG6 - NC-NCS - PK-7795 E-533		05/23	MICHAEL BLAKE	2	EAST CAMP/0730	EAST CAMP/1930
ENG6-E631 E-56		05/23	TERRY HOPE	3	EAST CAMP/0730	EAST CAMP/1930
ENG6 J3 CONT 07 E-731		05/30	CURTIC PUMPHREY	3	EAST CAMP/0730	EAST CAMP/1930
TPL2 - ORANGE SPRINGS CONSTRUCTION, INC - E-460		05/21	HUGH MATELETT	1	EAST CAMP/0730	EAST CAMP/1930
WTS2 - STRICKLANDS E-272		05/30	LUCIUS CORBITT	1	EAST CAMP/0730	EAST CAMP/1930
TFLD E-56.10		05/23	DANIEL CASTO	1	EAST CAMP/0730	EAST CAMP/1930
8. Division/Group Communication Summary						
Function	Channel	RX Frequency N/W	RX Tone/NAC	TX Frequency N/W	TX Tone/NAC	Mode
AIR TO GROUND	4	169.2000N	NONE	169.2000N	NONE	A
COMMAND	8	159.2700N	156.7	151.1000N	123.0	A
TACTICAL	11	163.7125N	NONE	163.7125N	NONE	A
AIR TO GROUND	14	166.6750N	NONE	166.6750N	NONE	A
AIR TO GROUND	15	169.1500N	NONE	169.1500N	NONE	A
AIR GUARD	16	168.6250N	NONE	168.6250N	110.9	A
9. Prepared By (Resource Unit Leader)			Approved By (Planning Section Chief)		Date	Time
DONNA THOMAS			BRIAN ELDREDGE		05/20/2017	2000

Division/Group Assignment List (ICS 204 WF)

1. Incident Name:			3.			
WEST MIMS			IV		A	
2. Operational Period: DAY SHIFT 0730-1930						
Date/Time From: 05/21/2017 0730 SUN		Date/Time To: 05/21/2017 1930 SUN				
4. Operations Personnel						
PLANNING OPERATIONS CHIEF		S. WEAVER, P. DANIELS (T) M. DAVIS (T), MARC CRAIN		OPERATIONS CHIEF		J. DURRWACHTER, B. MONDAY (T) L. SMITH (T), S. BOWMAN (T)
BRANCH DIRECTOR		STEVE MILLER		DIVISION/GROUP SUPERVISOR		HANS RUDOLF; MARVIN ROYBAL THOMAS TALBOT, JEFF BOSTWICK (T)
SAFETY		IVAN CUPP		AIR TACTICAL GROUP SUPERVISOR		MARK NUNEZ, KEN MCLAUGHLIN
6. Control Operations/Work Assignments:						
Task						
<ul style="list-style-type: none"> • Patrol and mop up fuels appropriate to fuel type and anticipated weather and fire behavior. • Respond to any new starts within the division. 						
Purpose						
<ul style="list-style-type: none"> • Keep fire north of FL 2. 						
End State						
<ul style="list-style-type: none"> • Fire is contained by adequate control line to reduce threat to escape; minimizing damage to private timberlands, private lands, and other resource values at risk. 						
7. Special Instructions:						
<p>Ensure LCES is in place before operations begin and stay hydrated. Drive defensively and with lights on at all times. Identify escape routes. Bridge near DP 9 restricted to pickups - No engines. Bridge on swamp perimeter road just east of first Branch has steep drop offs - 1 lane travel - watch for barricades.</p> <p>For IA protocol see page 8</p> <p>Medical Emergency Channel: Command ETA for Ambulance to Scene: Air: 20 – 30 mins Ground: 10 - 15 mins Paved roads only. IWI – IC or approved person will use Channel 16 (Air Guard) for contact with air ambulance Air Ambulance landing zone to be determined by IWI – IC Utilize engines to provide dust abatement, as needed, prior to air ambulance landing</p>						
8. Division/Group Communication Summary						
Function	Channel	RX Frequency N/W	RX Tone/NAC	TX Frequency N/W	TX Tone/NAC	Mode
AIR TO GROUND	4	169.2000N	NONE	169.2000N	NONE	A
COMMAND	8	159.2700N	156.7	151.1000N	123.0	A
TACTICAL	11	163.7125N	NONE	163.7125N	NONE	A
AIR TO GROUND	14	166.6750N	NONE	166.6750N	NONE	A
AIR TO GROUND	15	169.1500N	NONE	169.1500N	NONE	A
AIR GUARD	16	168.6250N	NONE	168.6250N	110.9	A
9. Prepared By (Resource Unit Leader)			Approved By (Planning Section Chief)		Date	Time
DONNA THOMAS			BRIAN ELDREDGE		05/20/2017	2000

Division/Group Assignment List (ICS 204 WF)

1. Incident Name:			3.			
WEST MIMS			IV		CONTINGENCY	
2. Operational Period: DAY SHIFT 0730-1930						
Date/Time From: 05/21/2017 0730 SUN		Date/Time To: 05/21/2017 1930 SUN				
4. Operations Personnel						
PLANNING OPERATIONS CHIEF		S. WEAVER, M. CRAIN, P. DANIELS (T) M. DAVIS (T)		OPERATIONS CHIEF		J. DURRWACHTER, B. MONDAY (T) L. SMITH (T), S. BOWMAN (T)
BRANCH DIRECTOR		STEVE MILLER		DIVISION/GROUP SUPERVISOR		BLAIR JOINER (GA)
SAFETY		BRAD LIDELL, MIKE COOK CLAY STEPHENS (T)		AIR TACTICAL GROUP SUPERVISOR		MARK NUNEZ, KEN MCLAUGHLIN
5. Resources Assigned this Period						
Strike Team / Task Force / Resource Designator		LWD	Leader	Number Persons	Drop Off PT./Time	Pick Up PT./Time
GEORGIA					DP 10/0730	DP 10/1930
STEQ			JAMEY SMITH	1	DP 10/0730	DP 10/1930
TPL ATKINSON 60/70			HARPER	1	DP 10/0730	DP 10/1930
TPL BRANTLEY 62/72			EDGY	1	DP 10/0730	DP 10/1930
TPL CLINCH 62/72			BROWN	1	DP 10/0730	DP 10/1930
TPL BEH HILL 60/70			ASH	1	DP 10/0730	DP 10/1930
TPL MITCHELL 60/70			SINGLETON	1	DP 10/0730	DP 10/1930
TPL EARLY 60/70			STANIFER	1	DP 10/0730	DP 10/1930
TPL BROOKS 62/72			HARDEN	1	DP 10/0730	DP 10/1930
ENG6 COWETTA 86			EVANS & BUTTS	2	DP 10/0730	DP 10/1930
ENG6 JONES 86			SAUNDERS & PRESCOTT	2	DP 10/0730	DP 10/1930
ENG6 MCDUFFIE 86			PEEBLES & ELLSION	2	DP 10/0730	DP 10/1930
STEQ			TIM CROSBY	1	DP 10/0730	DP 10/1930
TPL APPLING 62/72			YAWN	1	DP 10/0730	DP 10/1930
TPL LOWNDES 63/73			STONE	1	DP 10/0730	DP 10/1930
TPL BACON 61/71			TAYLOR	1	DP 10/0730	DP 10/1930
8. Division/Group Communication Summary						
Function	Channel	RX Frequency N/W	RX Tone/NAC	TX Frequency N/W	TX Tone/NAC	Mode
COMMAND	3	159.1200N	NONE	151.3700N	82.5	A
AIR TO GROUND	4	169.2000N	NONE	169.2000N	NONE	A
COMMAND	8	159.2700N	156.7	151.1000N	123.0	A
TACTICAL	11	163.7125N	NONE	163.7125N	NONE	A
AIR TO GROUND	14	166.6750N	NONE	166.6750N	NONE	A
AIR TO GROUND	15	169.1500N	NONE	169.1500N	NONE	A
AIR GUARD	16	168.6250N	NONE	168.6250N	110.9	A
9. Prepared By (Resource Unit Leader)			Approved By (Planning Section Chief)		Date	Time
DONNA THOMAS			BRIAN ELDREDGE		05/20/2017	2000

Division/Group Assignment List (ICS 204 WF)

1. Incident Name:			3.			
WEST MIMS			IV		DIVISION/GROUP: CONTINGENCY	
2. Operational Period: DAY SHIFT 0730-1930						
Date/Time From: 05/21/2017 0730 SUN		Date/Time To: 05/21/2017 1930 SUN				
4. Operations Personnel						
PLANNING OPERATIONS CHIEF		S. WEAVER, M. CRAIN, P. DANIELS (T) M. DAVIS (T)		OPERATIONS CHIEF		J. DURRWACHTER, B. MONDAY (T) L. SMITH (T), S. BOWMAN (T)
BRANCH DIRECTOR		STEVE MILLER		DIVISION/GROUP SUPERVISOR		BLAIR JOINER (GA)
SAFETY		BRAD LIDELL, MIKE COOK CLAY STEPHENS (T)		AIR TACTICAL GROUP SUPERVISOR		MARK NUNEZ, KEN MCLAUGHLIN
5. Resources Assigned this Period						
Strike Team / Task Force / Resource Designator		LWD	Leader	Number Persons	Drop Off PT./Time	Pick Up PT./Time
FLORIDA					DP 10/0730	DP 10/1930
STEQ			SMITHERMAN	1	DP 10/0730	DP 10/1930
TPL GAINESVILLE 50			SMITH	1	DP 10/0730	DP 10/1930
TPL GAINESVILLE 36			DISNEY	1	DP 10/0730	DP 10/1930
TPL FIELD OPS 36			WILLIAMS	1	DP 10/0730	DP 10/1930
TPL FIELD OPS 34			DEHOFF	1	DP 10/0730	DP 10/1930
ENG6 HAMBERSHAM 86			ANDERSON & BROWN	2	DP 10/0730	DP 10/1930
ENG6 POLK 86			RUMLEY & ROLAND	2	DP 10/0730	DP 10/1930
ENG6 TATTNAIL 86			BOULINEAU & JONES	2	DP 10/0730	DP 10/1930
NC- D4 STRIKE TEAM E-468		05/22	RALPH WILLIAM DESTEUNDER	6	DP 10/0730	DP 10/1930
NC- D4 STRIKE TEAM E-469		05/22	TIMOTHY LEE GODWIN	1	DP 10/0730	DP 10/1930
TPL2 - NC-NCS - 5X35 E-470		05/22	MIKE BROWN	2	DP 10/0730	DP 10/1930
TPL 2 - PENDER LAND E-833		06/01	JOHN DUNN	1	DP 10/0730	DP 10/1930
STEQ E-468.4.1		05/23	KENNETH BELL	1	DP 10/0730	DP 10/1930
STEQ E-468.5.1		05/23	GREGORY RIGGS	1	DP 10/0730	DP 10/1930
8. Division/Group Communication Summary						
Function	Channel	RX Frequency N/W	RX Tone/NAC	TX Frequency N/W	TX Tone/NAC	Mode
COMMAND	3	159.1200N	NONE	151.3700N	82.5	A
AIR TO GROUND	4	169.2000N	NONE	169.2000N	NONE	A
COMMAND	8	159.2700N	156.7	151.1000N	123.0	A
TACTICAL	11	163.7125N	NONE	163.7125N	NONE	A
AIR TO GROUND	14	166.6750N	NONE	166.6750N	NONE	A
AIR TO GROUND	15	169.1500N	NONE	169.1500N	NONE	A
AIR GUARD	16	168.6250N	NONE	168.6250N	110.9	A
9. Prepared By (Resource Unit Leader)			Approved By (Planning Section Chief)		Date	Time
DONNA THOMAS			BRIAN ELDREDGE		05/20/2017	2000

Division/Group Assignment List (ICS 204 WF)

1. Incident Name:			3.			
WEST MIMS			IV	CONTINGENCY		
2. Operational Period: DAY SHIFT 0730-1930						
Date/Time From: 05/21/2017 0730 SUN		Date/Time To: 05/21/2017 1930 SUN				
4. Operations Personnel						
PLANNING OPERATIONS CHIEF		S. WEAVER, M. CRAIN, P. DANIELS (T) M. DAVIS (T)		OPERATIONS CHIEF		J. DURRWACHTER, B. MONDAY (T) L. SMITH (T), S. BOWMAN (T)
BRANCH DIRECTOR		STEVE MILLER		DIVISION/GROUP SUPERVISOR		BLAIR JOINER (GA)
SAFETY		BRAD LIDELL, MIKE COOK CLAY STEPHENS (T)		AIR TACTICAL GROUP SUPERVISOR		MARK NUNEZ, KEN MCLAUGHLIN
6. Control Operations/Work Assignments:						
Purpose:						
<ul style="list-style-type: none"> • To provide suppression support for incident. 						
Task:						
<ul style="list-style-type: none"> • Resources are ready upon call for IA or extended attack. 						
End Shift:						
<ul style="list-style-type: none"> • Ready support resources available to respond to protect structures, timberland and other resource values at risk. 						
7. Special Instructions:						
For IA protocol see page 8						
Staged at Jon Bethea (DP 10), resources are assigned as needed.						
Medical Emergency Channel: Command						
ETA for Ambulance to Scene:						
Air: 20 – 30 mins						
Ground: 10 - 15 mins Paved roads only.						
IWI – IC or approved person will use Channel 16 (Air Guard) for contact with air ambulance						
Air Ambulance landing zone to be determined by IWI – IC						
Utilize engines to provide dust abatement, as needed, prior to air ambulance landing						
8. Division/Group Communication Summary						
Function	Channel	RX Frequency N/W	RX Tone/NAC	TX Frequency N/W	TX Tone/NAC	Mode
COMMAND	3	159.1200N	NONE	151.3700N	82.5	A
AIR TO GROUND	4	169.2000N	NONE	169.2000N	NONE	A
COMMAND	8	159.2700N	156.7	151.1000N	123.0	A
TACTICAL	11	163.7125N	NONE	163.7125N	NONE	A
AIR TO GROUND	14	166.6750N	NONE	166.6750N	NONE	A
AIR TO GROUND	15	169.1500N	NONE	169.1500N	NONE	A
AIR GUARD	16	168.6250N	NONE	168.6250N	110.9	A
9. Prepared By (Resource Unit Leader)			Approved By (Planning Section Chief)		Date	Time
DONNA THOMAS			BRIAN ELDREDGE		05/20/2017	2000

Division/Group Assignment List (ICS 204 WF)

1. Incident Name:			3.			
WEST MIMS			IV		Y	
2. Operational Period: DAY SHIFT 0730-1930						
Date/Time From: 05/21/2017 0730 SUN		Date/Time To: 05/21/2017 1930 SUN				
4. Operations Personnel						
PLANNING OPERATIONS CHIEF		S. WEAVER, M. CRAIN, P. DANIELS (T) M. DAVIS (T)		OPERATIONS CHIEF		J. DURRWACHTER, B. MONDAY (T) L. SMITH (T), S. BOWMAN (T)
BRANCH DIRECTOR		STEVE MILLER		DIVISION/GROUP SUPERVISOR		JOE MORRIS
SAFETY		IVAN CUPP		AIR TACTICAL GROUP SUPERVISOR		MARK NUNEZ, KEN MCLAUGHLIN
5. Resources Assigned this Period						
Strike Team / Task Force / Resource Designator		LWD	Leader	Number Persons	Drop Off PT./Time	Pick Up PT./Time
MODULE - WILDLAND FIRE - SW SAGUARO NP O-477		05/28	JASON THIVENER	7	EAST CAMP/0730	EAST CAMP/1930
ENG6 MURRAY 86 - 4201016 E-61		05/25	KENNETH HARKINS	2	EAST CAMP/0730	EAST CAMP/1930
ENG6 FRANKLIN 86 - GFC4202065 E-59		05/25	DOUGLAS SLAY	2	EAST CAMP/0730	EAST CAMP/1930
ENG6 CHATTOOGA 86 E-60		05/25	ETHAN BEAID	2	EAST CAMP/0730	EAST CAMP/1930
ENG6 NMSNF - ENGINE 661 E-604		05/25	LARRY MARTINEZ	3	EAST CAMP/0730	EAST CAMP/1930
ENG6 - BANKHEAD E611 E-654		05/25	GARY CRAIG MOORE	3	EAST CAMP/0730	EAST CAMP/1930
ENG6 - NMCIF - ENGINE 631 E-612		05/25	RICK F LUCERO	3	EAST CAMP/0730	EAST CAMP/1930
ENG6 - DODGE 5500 ENGINE - T6 - ENGINE 603 E-662		05/26	MARK FRIZZELL	3	EAST CAMP/0730	EAST CAMP/1930
ENG6 AR-OZF BM - E-651 E-713		05/29	PAUL DZIEKAN	3	EAST CAMP/0730	EAST CAMP/1930
WTS1 - 357 - PB 350505 HASSELL E-476		05/25	ROBERT EDENFIELD	1	EAST CAMP/0730	EAST CAMP/1930
WT1 - VIN# 26825 E-408		05/27	RICHARD PETERS	1	EAST CAMP/0730	EAST CAMP/1930
WTT1 - VIN# E-588		05/25	HUBERT EDENFIELD HASSELLCO	1	EAST CAMP/0730	EAST CAMP/1930
DO22 - 750K - VIN# 242515 E-505		05/24	BRIAN JENKINS	1	EAST CAMP/0730	EAST CAMP/1930
DO22 - 650K - VIN# 271777 E-528		05/24	KURT HALL	1	EAST CAMP/0730	EAST CAMP/1930
8. Division/Group Communication Summary						
Function	Channel	RX Frequency N/W	RX Tone/NAC	TX Frequency N/W	TX Tone/NAC	Mode
AIR TO GROUND	4	169.2000N	NONE	169.2000N	NONE	A
COMMAND	8	159.2700N	156.7	151.1000N	123.0	A
TACTICAL	9	159.2850N	NONE	159.2850N	156.7	A
AIR TO GROUND	14	166.6750N	NONE	166.6750N	NONE	A
AIR TO GROUND	15	169.1500N	NONE	169.1500N	NONE	A
AIR GUARD	16	168.6250N	NONE	168.6250N	110.9	A
9. Prepared By (Resource Unit Leader)			Approved By (Planning Section Chief)		Date	Time
DONNA THOMAS			BRIAN ELDREDGE		05/20/2017	2000

Division/Group Assignment List (ICS 204 WF)

1. Incident Name:			3.			
WEST MIMS			Branch:		Division/Group:	
2. Operational Period: DAY SHIFT 0730-1930			IV		Y	
Date/Time From: 05/21/2017 0730 SUN		Date/Time To: 05/21/2017 1930 SUN				
4. Operations Personnel						
PLANNING OPERATIONS CHIEF		S. WEAVER, M. CRAIN, P. DANIELS (T) M. DAVIS (T)		OPERATIONS CHIEF		J. DURRWACHTER, B. MONDAY (T) L. SMITH (T), S. BOWMAN (T)
BRANCH DIRECTOR		STEVE MILLER		DIVISION/GROUP SUPERVISOR		JOE MORRIS
SAFETY		IVAN CUPP		AIR TACTICAL GROUP SUPERVISOR		MARK NUNEZ, KEN MCLAUGHLIN
5. Resources Assigned this Period						
Strike Team / Task Force / Resource Designator		LWD	Leader	Number Persons	Drop Off PT./Time	Pick Up PT./Time
DO22 - 750K - VIN# 271777 E-530		05/24	GREG DAVIS	1	EAST CAMP/0730	EAST CAMP/1930
DO22 - JD 750K - VIN# 268173 E-504		05/24	JAIME EDENFIELD	1	EAST CAMP/0730	EAST CAMP/1930
DO23 - VIN# 302873 E-623		05/25	KELLY PITTMAN	1	EAST CAMP/0730	EAST CAMP/1930
EXCA T1 - VIN# 470405 HASSELL E-620		05/25	GREG DAVIS	1	EAST CAMP/0730	EAST CAMP/1930
EXCA T3 - VIN# GXHFE E-622		05/25	BUCK TODDENBERRY	1	EAST CAMP/0730	EAST CAMP/1930
SKG4 - MS-MSR-E611 E-652		05/26	MICHAEL SEAL	2	EAST CAMP/0730	EAST CAMP/1930
GOAT 1 - UTV PENDER LAND E-797		05/31	KEVIN CROOM	1	EAST CAMP/0730	EAST CAMP/1930
GOAT 2 - UTV ENDICOTT E-798		05/31	THOMAS ENDICOTT	1	EAST CAMP/0730	EAST CAMP/1930
TFLD O-508		05/24	LISA M GOWE	1	EAST CAMP/0730	EAST CAMP/1930
TFLD O-619		05/28	JOSH GOLDSTEIN	1	EAST CAMP/0730	EAST CAMP/1930
STEN O-423		05/22	MATT SMITH	1	EAST CAMP/0730	EAST CAMP/1930
EMPF E-376 602-376-9812		05/23	PAUL PUGH	1	EAST CAMP/0730	EAST CAMP/1930
SOF2 O-461 719-289-4848		05/24	LARRY KLOCK	1	EAST CAMP/0730	EAST CAMP/1930
8. Division/Group Communication Summary						
Function	Channel	RX Frequency N/W	RX Tone/NAC	TX Frequency N/W	TX Tone/NAC	Mode
AIR TO GROUND	4	169.2000N	NONE	169.2000N	NONE	A
COMMAND	8	159.2700N	156.7	151.1000N	123.0	A
TACTICAL	9	159.2850N	NONE	159.2850N	156.7	A
AIR TO GROUND	14	166.6750N	NONE	166.6750N	NONE	A
AIR TO GROUND	15	169.1500N	NONE	169.1500N	NONE	A
AIR GUARD	16	168.6250N	NONE	168.6250N	110.9	A
9. Prepared By (Resource Unit Leader)			Approved By (Planning Section Chief)		Date	Time
DONNA THOMAS			BRIAN ELDREDGE		05/20/2017	2000

Division/Group Assignment List (ICS 204 WF)

1. Incident Name:			3.			
WEST MIMS			IV		Y	
2. Operational Period: DAY SHIFT 0730-1930						
Date/Time From: 05/21/2017 0730 SUN		Date/Time To: 05/21/2017 1930 SUN				
4. Operations Personnel						
PLANNING OPERATIONS CHIEF		S. WEAVER, M. CRAIN, P. DANIELS (T) M. DAVIS (T)		OPERATIONS CHIEF		J. DURRWACHTER, B. MONDAY (T) L. SMITH (T), S. BOWMAN (T)
BRANCH DIRECTOR		STEVE MILLER		DIVISION/GROUP SUPERVISOR		JOE MORRIS
SAFETY		IVAN CUPP		AIR TACTICAL GROUP SUPERVISOR		MARK NUNEZ, KEN MCLAUGHLIN
6. Control Operations/Work Assignments:						
Task						
<ul style="list-style-type: none"> • Respond to any new starts within the division. • Patrol and mop up fuels appropriate to fuel type and anticipated weather and fire behavior. Eliminate obvious smoke which will trigger unnecessary calls to 911 system. 						
Purpose						
<ul style="list-style-type: none"> • Keep fire within established fire containment lines. 						
End State						
<ul style="list-style-type: none"> • Fire is contained by adequate control line to reduce threat to escape; minimizing damage to private timberlands, private lands, and other resource values at risk. • 						
7. Special Instructions:						
<p>Ensure LCES is in place before operations begin and stay hydrated. Drive defensively and with lights on at all times. Identify escape routes. Bridge near DP 9 restricted to pickups - No engines. Bridge on swamp perimeter road just east of first Branch has steep drop offs - 1 lane travel - watch for barricades.</p> <p>For IA protocol see page 8</p> <p>Medical Emergency Channel: Command ETA for Ambulance to Scene: Air: 20 – 30 mins Ground: 10 - 15 mins Paved roads only. IWI – IC or approved person will use Channel 16 (Air Guard) for contact with air ambulance Air Ambulance landing zone to be determined by IWI – IC Utilize engines to provide dust abatement, as needed, prior to air ambulance landing</p>						
8. Division/Group Communication Summary						
Function	Channel	RX Frequency N/W	RX Tone/NAC	TX Frequency N/W	TX Tone/NAC	Mode
AIR TO GROUND	4	169.2000N	NONE	169.2000N	NONE	A
COMMAND	8	159.2700N	156.7	151.1000N	123.0	A
TACTICAL	9	159.2850N	NONE	159.2850N	156.7	A
AIR TO GROUND	14	166.6750N	NONE	166.6750N	NONE	A
AIR TO GROUND	15	169.1500N	NONE	169.1500N	NONE	A
AIR GUARD	16	168.6250N	NONE	168.6250N	110.9	A
9. Prepared By (Resource Unit Leader)			Approved By (Planning Section Chief)		Date	Time
DONNA THOMAS			BRIAN ELDREDGE		05/20/2017	2000

Division/Group Assignment List (ICS 204 WF)

1. Incident Name:				3.					
WEST MIMS				Branch:		Division/Group:			
2. Operational Period: DAY SHIFT 0730-1930				IV		Z			
Date/Time From: 05/21/2017 0730 SUN		Date/Time To: 05/21/2017 1930 SUN							
4. Operations Personnel									
PLANNING OPERATIONS CHIEF		S. WEAVER; M. CRAIN, P. DANIELS (T) M. DAVIS (T)		OPERATIONS CHIEF		J. DURRWACHTER, B. MONDAY (T) L. SMITH (T), S. BOWMAN (T)			
BRANCH DIRECTOR		STEVE MILLER		DIVISION/GROUP SUPERVISOR		JIMMY FLANIGAN JEFF NEAL (T)			
SAFETY		IVAN CUPP		AIR TACTICAL GROUP SUPERVISOR		MARK NUNEZ, KEN MCLAUGHLIN			
5. Resources Assigned this Period									
Strike Team / Task Force / Resource Designator		LWD	Leader	Number Persons	Drop Off PT./Time	Pick Up PT./Time			
ENG6 - NC-NCS - PJ-9126 E-455		05/21	ASHLEY KING	2	EAST CAMP/0730	EAST CAMP/1930			
ENG6 - NC-NCS - PJ-9244 E-485		05/21	JASON O'NEAL	2	EAST CAMP/0730	EAST CAMP/1930			
ENG6 - 361 E-775		05/29	DAVID T MARBERT	3	EAST CAMP/0730	EAST CAMP/1930			
ENG6 - NMN2S - E 2-2 E-767		05/28	MAYLON BERT BROWN	2	EAST CAMP/0730	EAST CAMP/1930			
ENG6 - NC-NCS - PP-7115 E-456		05/21	ROBERT WHITE	2	EAST CAMP/0730	EAST CAMP/1930			
ENG6 - OLF - E-692 E-482		05/21	LYNDSEY KUPFER	4	EAST CAMP/0730	EAST CAMP/1930			
ENG6 - NC-NCS - PJ-7956 E-484		05/21	JOSEPH BRANDON WEBB	2	EAST CAMP/0730	EAST CAMP/1930			
ENG6 - NC-NCS - PJ-9218-E486		05/21	JOHN JORDAN KESSLER	2	EAST CAMP/0730	EAST CAMP/1930			
ENG6 - NC-NCS - PJ-7577 E-532		05/22	BRETT EVANS	2	EAST CAMP/0730	EAST CAMP/1930			
ENG6 - BOULDER COUNTY SHERIFF - ENGINE 6532 E-538		05/23	PETER KORETZ	3	EAST CAMP/0730	EAST CAMP/1930			
ENG6 - FOUR MILE FD - BRUSH 4632 E-540		05/23	ZACH LITTLEFIELD	3	EAST CAMP/0730	EAST CAMP/1930			
ENG6 - OH-OHS E-62 E-761		05/28	JEFFREY G TUCKER	6	EAST CAMP/0730	EAST CAMP/1930			
ENG6 - AR-OUF - PCS - E-692 E-737		05/29	MATTHEW MICHAEL KAMPF	3	EAST CAMP/0730	EAST CAMP/1930			
8. Division/Group Communication Summary									
Function	Channel	RX Frequency N/W	RX Tone/NAC	TX Frequency N/W	TX Tone/NAC	Mode			
AIR TO GROUND	4	169.2000N	NONE	169.2000N	NONE	A			
COMMAND	8	159.2700N	156.7	151.1000N	123.0	A			
TACTICAL	10	168.3500N	NONE	168.3500N	NONE	A			
AIR TO GROUND	14	166.6750N	NONE	166.6750N	NONE	A			
AIR TO GROUND	15	169.1500N	NONE	169.1500N	NONE	A			
AIR GUARD	16	168.6250N	NONE	168.6250N	110.9	A			
9. Prepared By (Resource Unit Leader)			Approved By (Planning Section Chief)			Date		Time	
DONNA THOMAS			BRIAN ELDREDGE			05/20/2017		2000	

Division/Group Assignment List (ICS 204 WF)

1. Incident Name:			3.			
WEST MIMS			IV		Z	
2. Operational Period: DAY SHIFT 0730-1930						
Date/Time From: 05/21/2017 0730 SUN		Date/Time To: 05/21/2017 1930 SUN				
4. Operations Personnel						
PLANNING OPERATIONS CHIEF		S. WEAVER; M. CRAIN, P. DANIELS (T) M. DAVIS (T)		OPERATIONS CHIEF		J. DURRWACHTER, B. MONDAY (T) L. SMITH (T), S. BOWMAN (T)
BRANCH DIRECTOR		STEVE MILLER		DIVISION/GROUP SUPERVISOR		JIMMY FLANIGAN JEFF NEAL (T)
SAFETY		IVAN CUPP		AIR TACTICAL GROUP SUPERVISOR		MARK NUNEZ, KEN MCLAUGHLIN
5. Resources Assigned this Period						
Strike Team / Task Force / Resource Designator		LWD	Leader	Number Persons	Drop Off PT./Time	Pick Up PT./Time
ENG6 - REDBIRD E6171 E-447		05/21	RUPERT NOWLIN	2	EAST CAMP/0730	EAST CAMP/1930
WTT2 - VIN# 009542 E-409		05/22	ANTHONY PALVICK	1	EAST CAMP/0730	EAST CAMP/1930
WTT2 (TACTICAL) - VIN# 9250 E-574		06/01	TONY TIPTON	1	EAST CAMP/0730	EAST CAMP/1930
WTT2 - FARRELL TIMBER - VIN# 557261 E-410		05/26	BENJAMIN JOHNS	1	EAST CAMP/0730	EAST CAMP/1930
WTS2 - BLACK RANGE E-642		05/28	BRANDON SHEPPERD	1	EAST CAMP/0730	EAST CAMP/1930
TPL3 - WILDLANDS FIRE SRVC INC - 99744 E-465		06/02	SAM STRICKLAND	2	EAST CAMP/0730	EAST CAMP/1930
TFLD O-350		05/21	NATHANIEL TODD NIGHTINGALE	1	EAST CAMP/0730	EAST CAMP/1930
TFLD (T) O-513		05/23	NEIL CLINEMAN	1	EAST CAMP/0730	EAST CAMP/1930
STEN O-658		05/29	JAMES T ALLISON	1	EAST CAMP/0730	EAST CAMP/1930
STEN O-414		05/23	TIEGE DOWNES	1	EAST CAMP/0730	EAST CAMP/1930
STEQ O-662		05/30	WILLIAM BOJORQUES	1	EAST CAMP/0730	EAST CAMP/1930
EMPF E-314 602-571-2505		05/29	JOHN HECK	1	EAST CAMP/0730	EAST CAMP/1930
SOF2 O-461		05/24	LARRY KLOCK	1	EAST CAMP/0730	EAST CAMP/1930
6. Control Operations/Work Assignments:						
8. Division/Group Communication Summary						
Function	Channel	RX Frequency N/W	RX Tone/NAC	TX Frequency N/W	TX Tone/NAC	Mode
AIR TO GROUND	4	169.2000N	NONE	169.2000N	NONE	A
COMMAND	8	159.2700N	156.7	151.1000N	123.0	A
TACTICAL	10	168.3500N	NONE	168.3500N	NONE	A
AIR TO GROUND	14	166.6750N	NONE	166.6750N	NONE	A
AIR TO GROUND	15	169.1500N	NONE	169.1500N	NONE	A
AIR GUARD	16	168.6250N	NONE	168.6250N	110.9	A
9. Prepared By (Resource Unit Leader)			Approved By (Planning Section Chief)		Date	Time
DONNA THOMAS			BRIAN ELDREDGE		05/20/2017	2000

Division/Group Assignment List (ICS 204 WF)

1. Incident Name:			3.			
WEST MIMS			Branch:		Division/Group:	
2. Operational Period: DAY SHIFT 0730-1930			IV		Z	
Date/Time From: 05/21/2017 0730	SUN	Date/Time To: 05/21/2017 1930	SUN			
4. Operations Personnel						
PLANNING OPERATIONS CHIEF		S. WEAVER; M. CRAIN, P. DANIELS (T) M. DAVIS (T)		OPERATIONS CHIEF		
				J. DURRWACHTER, B. MONDAY (T) L. SMITH (T), S. BOWMAN (T)		
BRANCH DIRECTOR		STEVE MILLER		DIVISION/GROUP SUPERVISOR		
				JIMMY FLANIGAN JEFF NEAL (T)		
SAFETY		IVAN CUPP		AIR TACTICAL GROUP SUPERVISOR		
				MARK NUNEZ, KEN MCLAUGHLIN		
6. Control Operations/Work Assignments:						
Task						
<ul style="list-style-type: none"> • Respond to any new starts within the division. • Patrol and mop up fuels appropriate to fuel type and anticipated weather and fire behavior. 						
Purpose						
<ul style="list-style-type: none"> • Keep fire within established fire containment lines. 						
End State						
<ul style="list-style-type: none"> • Fire is contained by adequate control line to reduce threat to escape; minimizing damage to private timberlands, private lands, and other resource values at risk. 						
7. Special Instructions:						
Medical Emergency Channel: Command ETA for Ambulance to Scene: Air: 20 – 30 mins Ground: 10 - 15 mins Paved roads only. IWI – IC or approved person will use Channel 16 (Air Guard) for contact with air ambulance Air Ambulance landing zone to be determined by IWI – IC Utilize engines to provide dust abatement, as needed, prior to air ambulance landing						
For IA protocol see page 8						
2 - TPL Okie - O/H Donnie Harris DIVS 1 - 1050 KG - with operator GFC 1 - Appalachia 750 (Lease) with operator DIVS Blair Joiner STEQ with 3-T2 Tractor Plow STEQ (Weaver) with 4-T3 Tractor Plow						
8. Division/Group Communication Summary						
Function	Channel	RX Frequency N/W	RX Tone/NAC	TX Frequency N/W	TX Tone/NAC	Mode
AIR TO GROUND	4	169.2000N	NONE	169.2000N	NONE	A
COMMAND	8	159.2700N	156.7	151.1000N	123.0	A
TACTICAL	10	168.3500N	NONE	168.3500N	NONE	A
AIR TO GROUND	14	166.6750N	NONE	166.6750N	NONE	A
AIR TO GROUND	15	169.1500N	NONE	169.1500N	NONE	A
AIR GUARD	16	168.6250N	NONE	168.6250N	110.9	A
9. Prepared By (Resource Unit Leader)		Approved By (Planning Section Chief)		Date		Time
DONNA THOMAS		BRIAN ELDREDGE		05/20/2017		2000

AIR OPERATIONS SUMMARY (ICS220)

Prepared by: John Mason

Prepared Date: 5/20/2017

Prepared Time: 17:00

1. INCIDENT NAME: West Mims	2. OPS PERIOD DATE: 5/21/17	START TIME: 0900	END TIME: 2030	SUNRISE: 0630	SUNSET TIME: 2020 (Folkston)
3. REMARKS Safety Notes: Hazards (SEE AND AVOID GENERAL AVIATION TRAFFIC AND AERIAL HAZARDS) -Maintain clear communications; confirm that drop location is clear; ground personnel state: "Clear to Drop" -Incident Aircraft conduct flight following with Pogo Helibase when ATGS is not up. -Aerial Ignition Group: Helicopter 1FW with PLDO; FIRB, Jon King. ORDERING/FLIGHT REQUESTS -Request Helicopter water drops through Air Attack -Request aerial ignition through Operations -Request Tankers/Retardant through Air Attack -Requests for Reconnaissance missions must go through Operations for pre-approval E-MAIL AIRCRAFT COSTS DAILY AT END OF SHIFT TO: john_mason@fws.gov			4. READY ALERT AIRCRAFT: 2BH Call 911 to request LIFEFLIGHT aircraft.		5. TFR: 7/1766; Surface to 3500' MSL; See NOTAM for full description. Frequency 120.8500

6. PERSONNEL	NAME	PHONE #	7. FREQUENCIES	AM	FM	8. FIXED-WING- Type/ Make-Model/ N#/ Base
AOBD	Tim Faust Air Ops Desk	702-271-6055 912-637-5133	A/A - Fixed Wing A/A - Rotor / TFR A/G (Request) A/G 66 (Primary) A/G 72 (Secondary)	120.3500 120.8500	 169.2000 166.6750 169.1500	AIR ATTACK – ATGS – Mark Nunez / AC690 / N690RA / LCQ 805-975-5227 ATGS – Ken McLaughlin / Kodiak / N420Q / LCQ 813-997-0317
ASGS	John Mason	478-951-7319				LEAD – ASM – Bravo xx As assigned
HEB2 - Pogo HEB2(T) - Pogo HEB1 - Lake City	Marc 'Boomer' Rudkin David Aldrich Brad Nelson	307-287-0440 559-349-6793	Deck/TOLC (Pogo) Deck (Lake City)		168.0500 163.100	TANKERS – As available (T-01) BAE146 / N473NA / LCQ (Off Sundays) (T-02) BAE146 / N474NA / LCQ (Off Mondays) (T-164) RJ-85A / N374AC / LCQ (Off Thursdays) (T-911) DC-10 / N17085 / CHA (Off Sat. & Sun.)
	Pogo Helibase	912-496-4415				
	Lake City Helibase	561-512-6333	Air Guard		168.625 (110.9)	

9. HELICOPTER Remarks Box Legend: C=Cargo P=Passengers B=Bucket SN=Snorkel R=Rappel H=Hoist SH=Short Haul ME=Medical Evacuation/Extraction Exu=Exclusive Use

FAA N#	T Y	MAKE/ MODEL	BASE	START	READY to FLY	REMARKS	FAA N#	T Y	MAKE/ MODEL	BASE	START	READY to FLY	REMARKS
132BH	3	AS350 B3	Pogo (3GE1)	0700	0830	P, B Exu	13FH	1	UH-60A	Lake City (LCQ)	0700	0730	B Exu
351FW	3	AS350 B2	Pogo (3GE1)	0700	0830	P, B Exu	611CK (701)	1	SH-3H / S-61	Lake City (LCQ)	0700	0730	SN Exu
471CH	1	CH-47D	Lake City (LCQ)	0700	0730	SN Exu	612CK (702)	1	SH-3H / S-61	Lake City (LCQ)	0700	0730	SN *On Loan
161KA	1	K-1200	Lake City (LCQ)	0700	0730	B Exu	137BH	1	S70A-27	Lake City (LCQ)	0700	0730	B *On Loan
699RH	1	K-1200	Lake City (LCQ)	0700	0730	B Exu	472CH	1	CH-47D	Lake City (LCQ)	0700	0730	SN *On Loan

INCIDENT RADIO COMMUNICATIONS PLAN (ICS 205)

1. Incident Name:			2. Date/Time Prepared:			3. Operational Period: DAY SHIFT 0730-1930				
WEST MIMS			Date: 05/20/2017 Time: 1715			Date/Time From: 05/21/2017 0730 SUN			Date/Time To: 05/21/2017 1930 SUN	
4. Basic Radio Channel Use:										
Zone Group	Ch #	Function	Channel Name/Trunked Radio System Talkgroup	Assignment	RX Freq	RX Tone/NAC	TX Freq	TX Tone/NAC	Mode (A,D, or M)	Remarks
1 WEST	1	COMMAND	WEST OKEE REP		167.1250N	156.7	163.1500N	156.7	M	STEPHEN FOSTER STATE PARK
1 WEST	2	COMMAND	S. FOSTER	DIV D, DIV E, DIV F	159.1200N	NONE	151.3700N	100.0	A	WEST ROAD MAINTENANCE FL FFS CONTINGENCY
1 EAST	3	COMMAND	CORNELIA		159.1200N	NONE	151.3700N	82.5	A	
1 ALL DIVISIONS	4	AIR TO GROUND	A/G REQUEST	ALL DIVISIONS	169.2000N	NONE	169.2000N	NONE	A	
1	5	COMMAND	GFC EDDY	GA FORESTRY	159.4650N	NONE	151.1450N	123.0	A	GA FORESTRY ONLY
1	6	TACTICAL	GFC TAC 1	WEST ROAD MAINT	159.3900N	NONE	159.3900N	156.7	A	FL FFS CONTINGENCY
1	7	TACTICAL	V FIRE 26		154.3025N	NONE	154.3025N	156.7	A	
1	8	TACTICAL	OSCEOLA PROJECT		163.7125N	NONE	163.7125N	NONE	A	
1	9	TACTICAL	SE COMPACT		159.2850N	NONE	159.2850N	156.7	A	
1	10	TACTICAL	REFUGE TAC 1	DIV E	168.3500N	NONE	168.3500N	NONE	A	
1	11	TACTICAL	REFUGE TAC 2	DIV F	163.1000N	NONE	163.1000N	NONE	A	
1	12	TACTICAL	FFS 199		159.4425N	NONE	159.4425N	NONE	A	
1 WEST	13	TACTICAL	FFS 200	DIV D	159.4125N	NONE	159.4125N	NONE	A	
1 ALL DIVISIONS	14	AIR TO GROUND	AIR TO GRD 66	A/G PRIMARY	166.6750N	NONE	166.6750N	NONE	A	AIR TO GROUND PRIMARY
1 ALL DIVISIONS	15	AIR TO GROUND	AIR TO GRD 72	A/G SECONDARY	169.1500N	NONE	169.1500N	NONE	A	AIR / GROUND SECONDARY
1 ALL DIVISIONS	16	AIR GUARD	AIR GUARD	ALL DIVISIONS	168.6250N	NONE	168.6250N	110.9	A	EMERGENCY AIRCRAFT COMMUNICATIONS
5. Special Instructions:										
6. Prepared By (Communications Unit Leader)				Name: JERRY W. PATRICK				Signature:		
ICS 205				IAP Page				Date/Time: 05/20/2017 1715		

INCIDENT RADIO COMMUNICATIONS PLAN (ICS 205)

1. Incident Name:	2. Date/Time Prepared:	3. Operational Period: DAY SHIFT 0730-1930	
WEST MIMS	Date: 05/20/2017 Time: 1715	Date/Time From: 05/21/2017 0730 SUN	Date/Time To: 05/21/2017 1930 SUN

4. Basic Radio Channel Use:

Zone Group	Ch #	Function	Channel Name/Trunked Radio System Talkgroup	Assignment	RX Freq	RX Tone/NAC	TX Freq	TX Tone/NAC	Mode (A,D, or M)	Remarks
2	1	TACTICAL	V FIRE 21	MUTUAL AID	154.2800N	NONE	154.2800N		A	MUTUAL AID CHANNEL
2 WEST	2	COMMAND	S. FOSTER		159.1200N	NONE	151.3700N	100.0	A	
2 EAST	3	COMMAND	CORNELIA	DIV M, N, O, SWING	159.1200N	NONE	151.3700N	82.5	A	DIV K, DIV L, STAGING, IA, CONTINGENCY, STRUCTURE
2 ALL DIVISIONS	4	AIR TO GROUND	A/G REQUEST	ALL DIVISIONS	169.2000N	NONE	169.2000N	NONE	A	BY REQUEST ONLY
2	5	COMMAND	GFC EDDY	GA FORESTRY	159.4650N	NONE	151.1450N	123.0	A	GA FORESTRY ONLY
2 EAST	6	COMMAND	GA BEND	UNASSIGNED	159.2700N	156.7	151.1000N	156.7	A	
2 NORTH	7	COMMAND	FARGO RPT	DIV H/I, DIV J	159.2700N	156.7	151.1000N	100.0	A	
2 SOUTH	8	COMMAND	BAKER RPT	DIV A, Y, Z, DIV B	159.2700N	156.7	151.1000N	123.0	A	STRUCTURE, SWING CONTINGENCY, DIV C
2	9	TACTICAL	COMPACT	DIV L, DIV Y	159.2850N	NONE	159.2850N	156.7	A	DIV M, DIV C
2	10	TACTICAL	REFUGE TAC 1	DIV N, DIV Z	168.3500N	NONE	168.3500N	NONE	A	DIV H/I, STAGING
2	11	TACTICAL	OSCEOLA PROJECT	DIV A, DIV O	163.7125N	NONE	163.7125N	NONE	A	INITIAL ATTACK, CONTINGENCY STRUCTURE PROTECTION
2	12	TACTICAL	FFS 199	INITIAL ATTACK	159.4425N	NONE	159.4425N	NONE	A	DIV J, SWING
2	13	TACTICAL	FFS 200	DIV K, DIV B	159.4125N	NONE	159.4125N	NONE	A	STRUCTURE
2 ALL DIVISIONS	14	AIR TO GROUND	AIR TO GRD 66	A/G PRIMARY	166.6750N	NONE	166.6750N	NONE	A	AIR / GROUND PRIMARY
2 ALL DIVISIONS	15	AIR TO GROUND	AIR TO GRD 72	A/G SECONDARY	169.1500N	NONE	169.1500N	NONE	A	AIR / GROUND SECONDARY
2 ALL DIVISIONS	16	AIR GUARD	AIR GUARD	ALL DIVISIONS	168.6250N	NONE	168.6250N	110.9	A	EMERGENCY AIRCRAFT COMMUNICATIONS

5. Special Instructions:

WEST MIMS DAY PLAN

6. Prepared By (Communications Unit Leader)	Name: JERRY W. PATRICK	Signature:
ICS 205	IAP Page	Date/Time: 05/20/2017 1715

PHONE LIST - WEST MIMS FIRE

Position	Name	Phone Number	Position	Name	Phone Number
UNIFIED COMMAND			Telephone lines at ICP		
Red Team IC	Mike Dueitt	850-228-0320	Information/PIO		912-637-5132
Red Team IC(t)	Michael Goicochea	406-865-0975	Information		912-637-5108
Liason Officer	Keith Lawrence	803-522-5264	Air Ops		912-637-5133
Liason Officer	J.D.Lee	239-340-4626	Ordering		912-637-5107
Liason Officer	Paul Stevens	252-216-6316	Ordering		912-637-5136
			Ordering Fax		912-637-5104
PUBLIC INFORMATION	Land Line	912-637-5108	Supply		912-637-5138
Information Desk		904-452-4627	Ground Support		912-637-5105
Public Information	Catherine Hibbard	413-531-4276	Finance		912-637-5109
Public Information	Bonnie Strawser	252-423-0815	Finance Fax		912-637-5110
Refuge Public Info	Susie Heisey	912-286-3110	Operations		912-637-5112
AGENCY REPRESENTATIVES			Plans FAX		912-637-5115
Refuge FMO	Reese Kerbow	912-276-0167	Checkin		912-637-5137
Refuge AFMO	Reggie Forcine	912-614-4041	Demob		912-637-5113
Refuge Manager	Mike Lusk	912-390-2193	Communications		912-637-5116
DNR Agency Liaison	SGT. Patrick Dupree	404-694-5596			
Ware Co EMA	Bill Parham	229-425-4549			
Clinch Co EMA	Will Joyce	912-520-8581	Telephone lines at Eastside Camp		
Lanier Co EMA	Randy Patten	229-482-5070	Plans/Demob		912-496-3114
Charlton Co EMA	Bruce Young	912-390-2022	Plans Fax		912-496-3115
Charlton Co Sheriff's Office	Inv. Clay Burnsel	912-276-2628	Operations		912-496-2278
Georgia EMA	Diane Adams	912-266-5421	Ground Support		912-496-4368
NC-Forest Service	Greg Smith	828-230-8527	Supply		912-496-3116
PLANNING			Communications		912-496-2293
PSC ICP	Brian Eldredge	208-869-6362	Medical		912-496-2289
PSC Eastside Camp	Terry Pierce	423-596-2694			
PSC ICP (T)	Jason Braunstein	434-249-9915			
Fire Behavior Analyst	Gary Jarvis	251-288-1084	LAND OWNERS AND OTHER CONTACTS		
Fire Behavior Analyst(t)	Kelly Cagle	336-302-0343	Steve Davis	Am Forest Mgmt	912-614-1828
Fire Behavior Analyst(t)	Matt Filbert	208-720-7248	Allen C. Cross	Rayonier US Forest	904-796-7929
IMET	Joe Guoudsward	240-778-5279	Dave Gather	Okie Electric	912-390-9755
THSP-ARA	Dan Byrd	240-778-5278	Chad Edwards	Railroad Contact	540-797-9918
READ	Rocky Chesser	912-276-3232	Steve Magnolia	FD Coordinator	904-537-5853
FWS READ	Carl Schmidt	478-365-2088	Terri Jenkins	FWS FD/VFD Contact	912-313-4225
FWS READ	Daniel Barrand	352-490-1959	Ned Neenan	Legacy Forestry	352-317-0738
FWS READ	Howard McCllough	912-276-0552	Ken Zaydel	Social Circle FD	404-205-2738
FWS READ	Erin Daughtrey	912-223-6752	Royce Proctor	OKE Electric Coop	912-282-6873
SITL	Terry Bowerman	423-552-3323		Okefenokee NWR	912-496-7366
SITL(t)	Kevin Hiers	229-560-8861	Adam McCullough	NWR IA Duty Officer	912-496-4177
GISS	Andrew Thompson	706-399-6459	Billy Estep	EMS Dir/Nassau Coun	904-813-3476
Finance	General	912-637-5109			
Chief	Bonny Johnson	859-556-1572			
Comp/Claims	Verma Coleman	470-532-8798			
Procurment	James Meredith	470-532-8810			
Time	Jean Frick	828-361-5361			
					Ver 20May17


PHONE LIST WEST MIMS FIRE

Position	Name	Phone Number	Position	Name	Phone Number
OPERATIONS	Land Line	912-637-5112	Branch IV	Steve Miller	386-937-0554
Lead Ops	Jim Durrwachter	229-561-3477	Division A	Hans Ruder	541-969-0295
Lead Ops (t)	Larry Smith	337-526-0128	Division A(t)	Jeff Bostwich	575-694-0280
Planning Ops-Eastside	Marc Crain	720-315-4240	Division Y	Joe Morris	
Planning Ops	Steve Weaver	828-360-2476	Division Z	Jimmy Flanagan	775-296-0140
Planning Ops (t)	Mike Davis	936-219-7743	Division Z(t)	Jeff Neil	360-271-4231
Planning Ops (t)	Jeremy Brand	256-589-5098	Division A/Y/Z Night	John Molve	
East Operations	Beale Monday	928-699-5588	Structure Group Night	Harold Kibbe	231-920-5085
Planning Ops (t)	Phil Daniels	720-315-4240	Refuge Advisor	Reggie Forcine	912-614-4041
West Operations	Shannon Bowman	850-490-0428	Florida Contingency	Keith Osteen	
Structure	Aaron Guy	252-312-4369	FWS Contingency	Rocky Chesser	912-276-3232
			FFS Contingency	John Raulerson	386-292-5652
Branch I	Darrell Miller	520-604-7582	FFS Contingency	Andy Lamborn	383-365-4441
Division B	Tim Stiltner	904-210-6731	STAM Bethea	Adam Dummer	831-238-0991
Division C	Bert Plant	732-904-5935			
Division D	Joe Burgette	303-548-0854	AIR OPERATIONS		
Division E	Greg Toll	303-588-2673	AOBD	Timothy Faust	702-271-6055
Division F	Shelly Crook	575-313-6837	ATGS	Ken McLaughlin	813-997-0317
IA Group	Donnie Harris	252-475-8012	ATGS	Mark Nunez	805-975-5227
IA Group (t)	Arturo Gasdik	707-834-8205	ASGS	John Mason	478-951-7319
Road Maint Group	Candice Kutrosky	719-651-0669	HEB2-Pogo	Marc "Boomer" Rudkin	307-287-0440
Branch I Night	Jamie Schwartz	540-903-7193	HEB1 - Lake City	Brad Nelson	559-349-6793
Structure Group Night	Chris Obrien				
Division Night D/E	James Lico	303-817-6009	SAFETY		
Branch II	Nate Gogna	916-205-5033	Safety Officer	Mike Cook	205-272-2426
Division G			Safety Officer	Brad Lidell	812-583-5543
Division H			Safety Officer	Clay Stephens	702-575-0392
Division I	Chris Lundgren	815-922-2502	Safety Officer	Ivan Cupp	405-990-7155
Division J	Jason Forthofer	406-207-5587	Safety Officer	Larry Klock	719-289-4848
North Ambulance/Oken EMS		470-532-8797	Safety Officer	Tim Oliverius	229-561-4392
Branch III	Ron Smith	601-466-7153			
Division K	Sun Bear Vierra	505-908-0955	LOGISTICS		
Division K(t)	Tom Albright	719-659-0024	Logistics Section Chief	John Smith	870-867-7254
Division L	Sam McFarland	580-380-9680	Logistics Chief East Camp	Michael Burchard	719-334-6525
Division L(t)	Sean Basso	775-934-0544	Logistics Chief East Camp	Harv Skjarven	715-889-1539
Division M	Brian Browning	828-200-0102	Service Branch	Joe Walker	229-561-4378
Division N	Karen Scholl	909-553-7731	Support Branch	John Bellemore	540-529-7697
Division N (t)	Chris Rankin	307-359-1997	Facilities Unit Leader	Keith Plagemann	801-664-2781
Division O	Jason Kolb	928-699-4985	Supply Unit Leader	Teddy Messenger	270-784-0248
Division O(t)	Michael Gue	305-338-6069	Ground Support Unit Ldr	Pat Wright	803-295-2819
IA Group	Greg Buckalew		East Camp Grd Support		484-880-7494
Structure Prot Specialist	Randy Jones	352-267-7700	Ordering Manager	Tamara Klindt	512-762-3279
Structure Prot Specialist			Food Unit Leader	Jim Lowe	336-451-1782
Branch III Night	Robert Laeng	209-352-0432	Security Manager	Tom Neal	618-201-2111
Division Night K/L	Kris Craddy	520-275-6747	Medical Unit Leader	Rich Dorazio	470-366-6302
STAM Eastside Camp	Chris Rudd	541-660-0634	Communications Unit	24 Hour	912-637-5116
			Communications Unit Ldr	Jerry Patrick	601-942-2786
			INCM	Mike Shipley	678-357-9814
			East Camp Communications		470-366-6306
Ver 20May17					



HEALTH AND SAFETY MESSAGE

“We don’t plan on luck to be safe, we plan on sound risk management and good decisions”....the Red Team

INCIDENT: West Mims Fire	DATE: Sunday, May 21, 2017
Major Hazards & Risks: Driving, Thunderstorms, Wildlife	
<p>Driving: <i>Headlights are a good defensive driving measure that help other motorists see us on roads. On this incident we are required to drive with lights on. If you have a rental, check to see if headlights come on automatically and stay on through daylight hours. If they don’t, just manually switch them on when driving. Anticipate how rainfall may impact your travel routes, both paved and dirt. Move out of areas before you are stranded.</i></p> <p>Thunderstorms: <i>The weather forecast includes thunderstorms which may have lightning and erratic winds. Don’t be a lightning rod. Take shelter before the bolts arrive. If you respond to an initial attack, include erratic winds in your assessment. Stop, Think, Talk...then Act. Check out the IRPG page 21.</i></p> <p>Wildlife: <i>This ecosystem has an abundance of wildlife. Generally, if you leave them alone, they will do the same for you. Bears with cubs have been seen on the west side. Alligators, snakes and raccoons seem to be everywhere. Gnats, horse flies and ticks are abundant even at ICP. If you are allergic to stinging insects, inform your co-workers and supervisor what to do if you are stung.</i></p>	
<p style="text-align: center;">Watchout</p> <div style="text-align: center;">  </div> <p style="text-align: center; font-size: small;">7. NO COMMUNICATION LINK WITH CREW MEMBERS/SUPERVISOR</p>	<p style="text-align: center;">Snake Bite First Aid</p> <ul style="list-style-type: none"> • Be calm = Don't run. Walk to a vehicle, sit down and cool off. • Get medical aid = Call on radio for EMT/Medic, inform your leader, locate bite, draw a circle around with pen/marker & monitor swelling. • Identify snake = Take photo safely. • Transport = EMT determine if ground or air transport, call for assistance/vehicles. If air transport call for engine to wet down landing zone. • Use 9 line and Medical Plan 206...this is a medical emergency.

Red Team Safety Officers: Brad, Mike, Ivan & Clay (T)

INCIDENT SAFETY ANALYSIS 215a

West Mims Fire - Sunday, May 21, 2017

8. Location	9. Hazard	6. Control or Abatement Action (Engineering, Administrative, PPE, Avoidance, Education, etc)
ALL	Helicopter Operations	<ul style="list-style-type: none"> ~ Helicopter operations should be used for priority missions. ~ Stay clear of all bucket drops when suppression actions are in place and allow 1 minute prior to re-entry. ~ Pilots or air supervisor ensure ground resources are clear before bucket drops. ~ Monitor A-G communications. ~ Follow aviation safety guidelines in IRPG and IHOG. ~ Ground resources advise pilot of local power lines and local visibility issues.
ALL	Train Traffic	<ul style="list-style-type: none"> ~ Observe warning signs when crossing tracks. ~ If no warning lights are posted, bring vehicle to a complete stop and check for incoming trains before crossing. ~ Use caution when crossing tracks with low vehicles or trailers. ~ Contact CSX to ensure awareness to fire resource locations.
ALL	Significant Fire Behavior	<ul style="list-style-type: none"> ~ Pay attention to the predicted weather and any alerts that may be announced. ~ Establish "Trigger Points" to withdraw. ~ Have in place LCES before engaging in operations. ~ Know the location of your Escape Routes.
A, B, C, D, O, Z, Contingency, IA	Power Utilities	<ul style="list-style-type: none"> ~ Notify all personnel of down electrical lines. ~ Refer to the IRPG page 24 for Power Line Safety. ~ Always treat downed wires as energized. ~ Identify and avoid high tension transmission lines. ~ In high winds or areas of dense smoke, avoid areas under power lines. ~ Be aware of utility restoration in your work area.
ALL	Air Operations	<ul style="list-style-type: none"> ~ Follow "Aviation Watch-Out Situations" on page 44, IRPG. ~ Don't plan on air resources for medical transport or resupply. ~ Ensure positive communication with all air resources. ~ Ensure communications are established with operators. ~ During airtanker operations clear the drop zone
ALL	Structure Protection & HAZMAT	<ul style="list-style-type: none"> ~ Review "Wildland Urban Interface" Watch outs, IRPG page 12. ~ Use "Structure Assessment" checklist, IRPG pages 13-15. ~ Follow "HAZMAT Incident Operations" on pages 34-36 in IRPG. ~ Identify and avoid damaged gas service near structures.
B, C, E, F, O, Y, Z	Logging Operations	<ul style="list-style-type: none"> ~ Stay clear of active cutting operations. ~ If re-burns occur, stop cutting operations before entering the area. ~ Use caution when logging equipment is in the area or traveling on the roads. ~ Maintain communication with logging operation during operational period. ~ Have suppression resources available in case logging operations start new fires.
ALL & ICPs	Driving & Traffic	<ul style="list-style-type: none"> ~ Practice "Defensive Driving" techniques traveling on all roads and city streets. ~ Always use spotters when backing. ~ Honk horn to alert personnel when backing. ~ Keep clutter off dash and inside cab. ~ Follow Driving LCES (Lights, Chock blocks, Emergency brake, Seat belts). ~ Always use headlights. ~ Yield to pedestrians and bicycles. ~ Observe posted speed limits. ~ Use the 3 second rule for following distance when driving. ~ Use chock blocks, turn wheels into hill. ~ Avoid distractions (eating, cell phones, radio). ~ Ensure that windshields are kept clean of dust and bugs. ~ Use caution when traveling on roads that are impacted by smoke or dusty conditions. ~ When feasible, coordinate travel to and from the hotels to ensure two or more personnel travel together to mitigate long distances. ~ Utilize headlights for day and night driving.
ALL	Hazard Trees	<ul style="list-style-type: none"> ~ Follow "Hazard Tree Safety" guidelines, IRPG page 22. ~ Post lookouts, or use a spotter in mop-up areas with personnel. ~ Don't park vehicles or take breaks in high concentrations of hazard trees. ~ Establish trigger points for disengagement during high wind events. ~ Remember that the hazard zone extends a minimum of 2 1/2 tree heights. ~ When working in bay areas, be aware of cypress trees. There are reports of them beginning to fall, due to burned out root systems.
ALL	Fireline Hazards	<ul style="list-style-type: none"> ~ Establish and continue to validate LCES. ~ Avoid radiant heat by wearing appropriate PPE correctly. ~ Use correct tool for task assigned. ~ Follow power line safety protocol as outlined on page 24 in IRPG. ~ Flag and isolate all HAZMAT and alert all personnel working in Division. ~ Follow WUI recommendations on pages 10-11 in IRPG.
ALL	Injury & Medical Emergency	<ul style="list-style-type: none"> ~ Assist injured employee and provide appropriate medical care. ~ Use EMT's on Division for initial care. ~ Follow medical protocol as outlined in ICS-206 (IWI) & IRPG Pgs 99-108

INCIDENT SAFETY ANALYSIS 215a

ALL	Communications	<ul style="list-style-type: none"> ~ Maintain communication with aviation resources, and suppression organization. ~ Ensure all know frequency and protocol for contacting resources. ~ Use clear terminology, ask questions and ensure good understanding, especially with new resources. ~ Utilize the ICS 205. ~ Utilize human repeaters when working in dead spots. ~ Know who to contact in case of an emergency and practice the IWI protocol and 9 Line ~ Added Boom for Divisions E & F is necessary to improve communcations.
ALL	Heavy Equipment Operations	<ul style="list-style-type: none"> ~ Ensure communications are established with operators. ~ Use hand signals if other communications are unavailable. ~ Maintain a 50'-100' exclusion area around equipment and increase it to 1 1/2 times tree height when in timber. ~ Use a spotter when backing.
ALL	Poisonous Plants	<ul style="list-style-type: none"> ~ Identify and Avoid hazard areas. ~ Launder clothing. ~ Shower frequently.
ALL	Night Operations	<ul style="list-style-type: none"> ~ Maintain high visibility in work area and wear vest while in roadway. ~ Use glow sticks to mark hazards. ~ Ensure personnel have a personal light (headlamp) and red strobe to ensure visibility. ~ Watch for signs of fatigue. ~ Take breaks away from areas of known hazard.
ALL	Indirect Fire line	<ul style="list-style-type: none"> ~ Post lookouts, identify escape routes and safety zones (IRPG pg. 6). ~ Review "Strategy/Indirect Attack" (IRPG pg. 77).
ALL	Wildlife	<ul style="list-style-type: none"> ~ Watch out for wildlife inside fire area and along roadways including bears, alligators, snakes, hogs, and deer. ~ Clean up all debris and trash during each operational period. ~ Don't feed or harass the animals.
ALL	Fatigue & Over Exertion	<ul style="list-style-type: none"> ~ Drink 1 quart of water/sports drink each hour during and after work. ~ Rotate crews out of smoky areas. ~ Set a reasonable work pace and allow adequate rest breaks while on the project. ~ Use buddy system to monitor personnel of heat related and fatigue issues. ~ Follow work / rest guidelines. Mitigate before next shift.
ALL	Severe Weather	<ul style="list-style-type: none"> ~ Review and follow Thunderstorm Safety guidelines in IRPG page 21. ~ Observe 30/30 Rule for lightning safety.....page 21, IRPG. ~ Establish "Trigger Points" to withdraw, and ensure all know rally site. ~ Use "Risk Management" process to determine retreat criteria and actions. ~ Carry rain gear and extra food and water if weather limits retreat to ICP. Adhere to direction found in Tornadoe Safety and Evacuation Plan
ALL	ATV/UTV use	<ul style="list-style-type: none"> ~ Ensure equipment is inspected and safe to use ~ Restrict UTV's to max width of 50" on ATV trails due to width and severe outsloped conditions. ~ Ensure operator is trained and certified to operate. ~ Ensure operator has proper PPE according to the Red Book. ~ At a minimum a hardhat with chin strap secured should be worn at all times. If your agency requires more advanced helmets and protection, follow your agency policy.
ALL	Unburned Area/Reburn Potential	<ul style="list-style-type: none"> ~ With the drying trend continuing, reburn of areas will become more of an issue. ~ Base actions upon observed and predicted fire behavior. ~ LCES Checklist (IRPG pg. 6). ~ Look Up, Down and Around (IRPG pg. 2-3)
ALL	Bees, Ticks, Mosquitoes, Spiders, Chiggers	<ul style="list-style-type: none"> ~ Canvas crew members for those with known allergic reactions to stings. ~ Ensure crew members have medication pens if needed. ~ Perform daily self inspection. ~ Use repellent as necessary. ~ Advanced Life Support, multi-dose epi and airway protection ~ Keep affected area clean and bandaged. ~ Be extra careful wen eating and/or drinking to avoid stings to mouth and throat.
ALL	Fog	<ul style="list-style-type: none"> ~ Obey posted speed limits at all times. Visibility may be limited to 1/2 mile in areas. ~ If driving in a convoy, maintain a safe distance between vehicles for emergency stops and distance. ~ Don't use high beam lights while driving, it can impair the vision of the driver and oncoming traffic.
ALL	Bees, Ticks, Mosquitoes, Spiders, Chiggers	<ul style="list-style-type: none"> ~ Canvas crew members for those with known allergic reactions to stings. ~ Ensure crew members have medication pens if needed. ~ Perform daily self inspection. ~ Use repellent as necessary. ~ Advanced Life Support, multi-dose epi and airway protection ~ Keep affected area clean and bandaged. ~ Be extra careful wen eating and/or drinking to avoid stings to mouth and throat.

MEDICAL PLAN (ICS 206 WF)

Incident/Project Name		1. Operational Period							
West Mims Fire		Date/Time 5/21/2017 0730hrs to 0730 hrs							
2. Ambulance Services									
Name	Complete Address			Phone		Advanced Life Support (ALS)			
Clinch County EMS	1050 Valdosta Highway Homerville GA			911		YES			
Charlton County EMS	321 Georgia Ave. St. George, GA			911		YES			
3. Air Ambulance Services									
Name	Phone			Type of Aircraft & Capability					
Air Methods	888-763-1010			AS 350 With night vision capabilities					
Air Evac	888-269-6006			206 L1+ With Night Vision capability					
Trauma 1	800-223-4878			Bell 407 & EC153 both with night vision capability					
4. Hospitals									
	DD° MM.MMM' N - Lat		DD° MM.MMM' W - Long		Travel Time		Helipad		Level of Care Facility
					Air	Gnd	Yes	No	
Satilla Regional 410 Darling Ave. Waycross GA 31501	Lat:	N 31° 13.452		15 mins	45 mins	912-283-3030	<input checked="" type="checkbox"/>	<input type="checkbox"/>	Level III
	Long:	W 82° 20.875							
	VHF:								
Clinch Memorial 1050 Valdosta Hwy Homerville GA 31634	Lat:	N 31° 01.975		20 mins	30 mins	912-487-5211	<input checked="" type="checkbox"/>	<input type="checkbox"/>	Level IV
	Long:	W 82° 45.850							
	VHF:								
Ed Frazier Hospital 159 N. 3 rd St. MacClenny FL 32063	Lat:	N 30° 28.482		15 mins	45 mins	904-259-3151	<input checked="" type="checkbox"/>	<input type="checkbox"/>	Level IV
	Long:	W 82° 11.896							
	VHF:								
Shands Jacksonville 655 West 8 th Str Jacksonville FL 32209	Lat:	N 30° 20.890		45 mins	90 mins	1-800-223-4878	<input checked="" type="checkbox"/>	<input type="checkbox"/>	Level I Trauma Center
	Long:	W 81° 39.862							
	VHF:								
UF Shands Burn Center 1600 SW Archer Rd Gainesville, FL 32610	Lat:	N 29° 38.648		45 mins	105 mins	352-733-0111	<input checked="" type="checkbox"/>	<input type="checkbox"/>	Burn Center
	Long:	W 82° 21.189							
	VHF:								
5. Division Branch Group Area Location Capability									
Division A,Y		Paul Pugh		EMPF		(602)376-9812			
Division C,D		Gary Allen Ford		EMPF		(470)532-8807			
Division B		Penny McDonagh		EMPF		(470)366-6301			
Division E,F		Rodney Schmidt		EMPF		(406)261-9541			
Division M,N		Lionel Van Gurp		EMPF		(928)235-7059			
Division O		Dean Carpenter		EMPF with UTV		(229)561-4224			
Division K,L		Mike Fincham		EMPF		(530)925-1267			
Division Z		John Heck		EMPF		(602)571-2505			
Branch 1 Amb./ 24 hr.		Clinch Co. EMS				(470)-532-8806			
Branch 3 Amb./24hr.		Golden Isles				(912)602-9224			
Branch 3 Amb/24hr		Okefenokee EMS				(470) 532-8797			

IWI IC Responsibilities:

- Take charge of the scene – inform the Division Supervisor and Communications that you are the IWI IC and establish radio communications (frequencies, channels). Identify the emergency name – Division A medical, Fish Meadows medical, Highway 21 accident.
- Assign or begin patient assessment (9 Line) and first aid. Request additional medical resources on division/branch or across incident. Transmit 9 Line patient information to Communications.
- Determine patient transportation through consultation with line medical personnel and Medical Unit Leader. Consider transportation time, risk to personnel, destination facility and available operational resources. If air transport is chosen, implement the plan for alternative transportation in the event aircraft cannot complete the mission. Order transportation resources through Communications as early as possible.
- Notify Communications as resources arrive and any patient status changes. Names of injured or deceased individuals will not be transmitted on the radio.
- Initiate documentation for future investigation; if a line safety officer is available, assign them to lead documentation. Do not move deceased individuals, gear or personal effects except to accomplish rescue work or protect the safety of others. Obtain written documentation of witnesses. The Unit Log, ICS 214, may be used for the initial documentation, but a subsequent narrative will be required.
- As appropriate, conduct an After Action Review to determine successes, areas to improve and lessons learned.

6. Prepared By (Medical Unit Leader)	7. Date/Time	8. Reviewed By (Safety Officer)	9. Date/Time
Rich DORazio MEDL / Brad Burns MEDL(T)	5/20/2017		5/20/2017



West Mims Fire briefings often mention the use and availability of K-1200 K-Max helicopters. These heavy duty “aerial trucks” are designed for repetitive external lift operations and, vertical reference flight.

On this fire, the K-MAX has demonstrated the lifting capacity it is known for, dropping 700 gallons of water in one pass; that’s about 5,600 pounds.

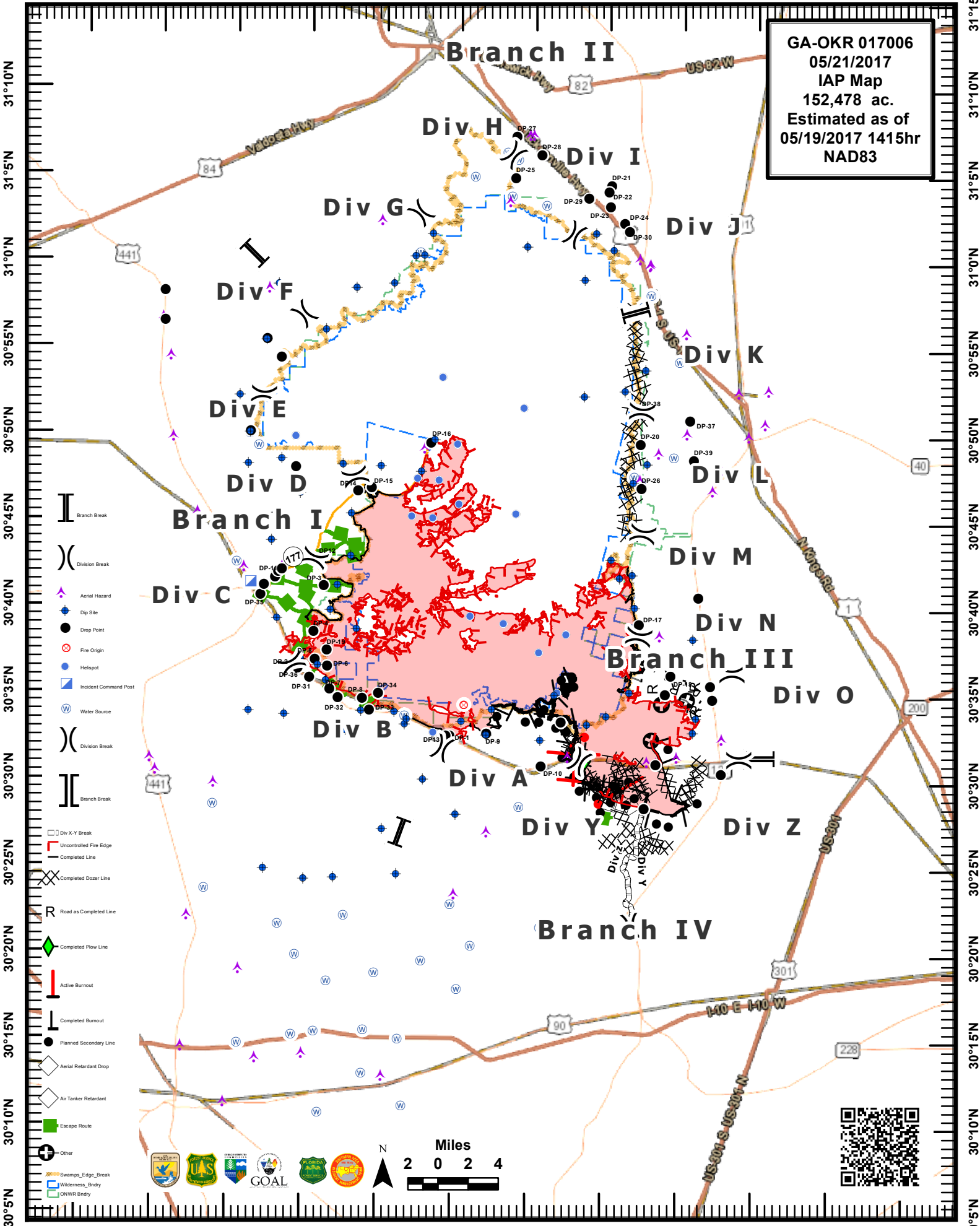
This unusual-looking helicopter has a set of two rotors that turn in opposite directions. Each rotor mast is mounted on a slight angle to the other.

Production was shut down in 2003 after the manufacture of thirty-eight K-1200 K-MAX’s. Inquiries for uses in firefighting, logging and, industrial transport prompted the company to resume commercial production of the K-MAX.

A successful first flight of the newly-produced model was announced by Kaman Corporation earlier this month. The first two K-MAX helicopters off of the line are reportedly going to China to be used in firefighting missions.



GA-OKR 017006
05/21/2017
IAP Map
152,478 ac.
Estimated as of
05/19/2017 1415hr
NAD83



31°10'N
31°05'N
31°00'N
30°55'N
30°50'N
30°45'N
30°40'N
30°35'N
30°30'N
30°25'N
30°20'N
30°15'N
30°10'N
30°5'N

31°15'N
31°10'N
31°05'N
31°00'N
30°55'N
30°50'N
30°45'N
30°40'N
30°35'N
30°30'N
30°25'N
30°20'N
30°15'N
30°10'N
30°5'N

This Page Intentionally left blank.

MEDICAL PLAN (ICS 206 WF)

FOR ALL MEDICAL EMERGENCIES: IDENTIFY ON SCENE INCIDENT COMMANDER BY NAME AND POSITION AND ANNOUNCE "MEDICAL EMERGENCY" TO INITIATE RESPONSE FROM IMT COMMUNICATIONS/DISPATCH.

Use items one through nine to communicate situation to communications/dispatch.

1. CONTACT COMMUNICATIONS/DISPATCH

Ex: "Communications, Div. Alpha. Stand-by for Priority Medical Incident Report." (If life threatening request designated frequency be cleared for emergency traffic.)

2. INCIDENT STATUS: *Provide incident summary and command structure.*

Nature of Injury/Illness		<i>Describe the injury (Ex: Broken leg with bleeding)</i>
Incident Name		<i>Geographic Name + "Medical" (Ex: Trout Meadow Medical)</i>
Incident Commander		<i>Name of IC</i>
Patient Care		<i>Name of Care Provider (Ex: EMT Smith)</i>

3. INITIAL PATIENT ASSESSMENT: *Complete this section for each patient. This is only a brief, initial assessment. Provide additional patient info after completing this 9 Line Report.*

Number of Patients:	Male / Female	Age:	Weight:
Conscious? <input type="checkbox"/> YES <input type="checkbox"/> NO = MEDEVAC!			
Breathing? <input type="checkbox"/> YES <input type="checkbox"/> NO = MEDEVAC!			
Mechanism of Injury: <i>What caused the injury?</i>			
Lat/Long (Datum WGS84) <i>Ex: N 40° 42.45' x W 123° 03.24'</i>			

4. SEVERITY OF EMERGENCY, TRANSPORT PRIORITY

SEVERITY	TRANSPORT PRIORITY
<input type="checkbox"/> URGENT-RED Life threatening injury or illness. <i>Ex: Unconscious, difficulty breathing, bleeding severely, 2° – 3° burns more than 4 palm sizes, heat stroke, disoriented.</i>	Ambulance or MEDEVAC helicopter. Evacuation need is IMMEDIATE.
<input type="checkbox"/> PRIORITY-YELLOW Serious Injury or illness. <i>Ex: Significant trauma, not able to walk, 2° – 3° burns not more than 1-2 palm sizes.</i>	Ambulance or consider air transport if at remote location. Evacuation may be DELAYED.
<input type="checkbox"/> ROUTINE-GREEN Not a life threatening injury or illness. <i>Ex: Sprains, strains, minor heat-related illness.</i>	Non-Emergency. Evacuation considered Routine of Convenience.

5. TRANSPORT PLAN:

Air Transport: (Agency Aircraft Preferred)

<input type="checkbox"/> Helispot	<input type="checkbox"/> Short-haul/Hoist	<input type="checkbox"/> Life Flight	<input type="checkbox"/> Other
-----------------------------------	---	--------------------------------------	--------------------------------

Ground Transport:

<input type="checkbox"/> Self-Extract	<input type="checkbox"/> Carry-Out	<input type="checkbox"/> Ambulance	<input type="checkbox"/> Other
---------------------------------------	------------------------------------	------------------------------------	--------------------------------

6. ADDITIONAL RESOURCE/EQUIPMENT NEEDS:

<input type="checkbox"/> Paramedic/EMT(s)	<input type="checkbox"/> Crew(s)	<input type="checkbox"/> SKED/Backboard/C-Collar
<input type="checkbox"/> Burn Sheet(s)	<input type="checkbox"/> Oxygen	<input type="checkbox"/> Trauma Bag
<input type="checkbox"/> Medication(s)	<input type="checkbox"/> IV/Fluid(s)	<input type="checkbox"/> Cardiac Monitor/AED
<input type="checkbox"/> Other (i.e. splints, rope rescue, wheeled litter)		

7. COMMUNICATIONS:

Function	Channel Name/Number	Receive (Rx)	Tone/NAC *	Transmit (Tx)	Tone/NAC *
<i>Ex: Command</i>	<i>Forest Rpt, Ch. 2</i>	<i>168.3250</i>	<i>110.9</i>	<i>171.4325</i>	<i>110.9</i>
COMMAND					
AIR-TO-GRND					
TACTICAL					

*(NAC for digital radio system)

8. EVACUATION LOCATION:

Lat/Long (Datum WGS84) <i>EX: N 40 42.45' x W 123 03.24'</i>	
Patient's ETA to Evacuation Location:	
Helispot/Extraction Size and Hazards:	

9. CONTINGENCY:

Considerations: *If primary options fail, what actions can be implemented in conjunction with primary evacuation method? Be thinking ahead...*

REMEMBER: **Confirm ETA's of resources ordered
Act according to your level of training
Be Alert. Keep Calm. Think Clearly. Act Decisively.**