

INCIDENT ACTION PLAN

WEST MIMS FIRE

OPERATIONAL PERIODS

MAY 23, 2017 TO MAY 24, 2017

0730-1930/1400-0200

SOUTHERN STATES TYPE-1 IMT

QR for IAP



GA-OKR-017006

FWS FFF2000000KYJ70
USFS PRKYJ717_1502 (P)
NPS PFFSKJ7017.00.1

QR for Maps



Schedule

0730 Morning Briefing
1200 C & G
1400 Swing Briefing @ Bethea
1500 Pre Planning Meeting
1700 Planning Meeting



INCIDENT OBJECTIVES (ICS 202)

1. Incident Name:	2. Operational Period: DAY SHIFT 0730-1930	
WEST MIMS	Date/Time From: 05/23/2017 0730 TUE	Date/Time To: 05/23/2017 1930 TUE
3. Objective(s):		
<ul style="list-style-type: none"> • Provide for the safety and security of incident personnel and public in all incident operations through sound risk assessment and hazard mitigations. • Maintain a positive working relationship with all adjacent landowners, cooperators State and Federal partners. Inform, involve and communicate incident planning and operations with all partners. • Confine all fires that are within the Okefenokee National Wildlife Refuge, inside the Refuge and/or inside the swamp edge break if possible. Aggressively suppress all fire outside the swamp edge boundary. • In cooperation with local timberland owners, use full suppression strategies and tactics to minimize damage to private timberlands and improvements and to prevent fires outside the Refuge from entering the Refuge. • Assist in management and suppression of additional fires (new starts or breakouts) in the vicinity as approved by Agency Administrators and Unified Incident Commanders. • Protect all cultural and archeological sites and structures within the refuge. • Manage the fires cost-effectively consistent with the values at risk. • Implement structure protection as necessary for at-risk facilities and communities. • Coordinate suppression actions with assigned Refuge Resource Advisors. • Conduct all operations in a harassment-free environment. There will be a no tolerance atmosphere for harassment, alcohol, or illegal drug use. Everyone will be treated with dignity and respect. • Identify and initiate suppression repair on all Divisions. 		
4. Operational Period Command Emphasis:		
Branch IV Keep fire East of the North Prong of St Mary's River; West of Nassau county Florida; and North of Baker county Florida Branch III Keep fire North of Rayonier Road 10, West of St Mary's River, and South of Stokes Road Keep fire within the Okefenokee Refuge Swamp Edge Break Boundary. Respond to initial attack fires on new starts within: *South of Suwannee Canal *Within the Okefenokee jurisdictional boundaries *Within state properties inside Perimeter Road		
General Situational Awareness:		
Utilize confine, contain, and point source protection strategies and tactics that commit operations personnel only where and when they can be successful, under conditions where important values at risk are protected with the least exposure.		
5. Site Safety Plan Required? Yes <input type="checkbox"/> No <input checked="" type="checkbox"/>		
Approved Site Safety Plan(s) Located at:		
6. Incident Action Plan (the items checked below are included in this Incident Action Plan):		
<input checked="" type="checkbox"/> ICS 202 <input checked="" type="checkbox"/> ICS 203 <input checked="" type="checkbox"/> ICS 204 <input checked="" type="checkbox"/> ICS 205 <input type="checkbox"/> ICS 205A <input checked="" type="checkbox"/> ICS 206	<input type="checkbox"/> ICS 207 <input checked="" type="checkbox"/> ICS 208 <input checked="" type="checkbox"/> ICS 220 <input checked="" type="checkbox"/> Map/Chart <input checked="" type="checkbox"/> Weather Forecast/Tides/Currents	Other Attachments: <input checked="" type="checkbox"/> PIO MESSAGE <input checked="" type="checkbox"/> FINANCE MESSAGE <input checked="" type="checkbox"/> TENTATIVE DEMOB <input checked="" type="checkbox"/> MAP
7. Prepared by: DUANE DURGEE	Position/Title: PSC1	Signature:
8. Approved by Incident Commander:	Name: KEITH MOUSEL	Signature:
ICS 202	IAP Page	Date/Time: 05/22/2017 2000

ORGANIZATION ASSIGNMENT LIST (ICS 203)

1. Incident Name:		2. Operational Period: DAY SHIFT 0730-1930	
WEST MIMS		Date/Time From: 05/23/2017 0730	Date/Time To: 05/23/2017 1930
		TUE	TUE
3. Incident Commander(s) and Command Staff:		FIRE BEHAVIOR ANALYST; AIR RESOURCE ADVISOR	
IC/UC	SAM LENEAVE, KEITH MOUSEL (T), MIKE QUESINBERRY	BRAD SMITH, MATT FILBERT (T) DAN BYRD; THSP-ARA	
6. Logistics Section:			
SAFETY OFFICER	LARRY CONNELL, LARRY GRUBBS CLAY STEPHENS (T)	CHIEF	JIM PETERS DAVID MCVAY (T)
INFORMATION OFFICER	ANNALEASA WINTER TODD SCHROEDER	SERVICE BRANCH DIRECTOR	
LIAISON OFFICER	ALAN DOZIER DANIEL STANLEY	SUPPORT BRANCH DIRECTOR - NIGHT	JOHN BELLMORE
4. Agency/Organization Representative(s):		SUPPLY UNIT	WEST-TRAVIS SHIDAL EAST-THOMAS NAPOLITANO, RON ZABKA
Agency/Organization	Name	FACILITIES UNIT	DENNIS EVANS WILLIA JACKSON (T)
GFC PROTECTION	FRANK SORRELLS	GROUND SUPPORT UNIT	WEST-DOUGLAS CROCKER; CHARLES WEATHERS EAST-GLENN SIMMONS, MIKE NELSON
OKE REF MGR/ASSIST	MICHAEL LUSK; SARA CLARDY		
OKE REF FMO	REESE KERBOW		
GOAL	JIM BARRETT		
FL-FFS	JOHN RAULERSON	COMMUNICATIONS UNIT	CHUCK RADCLIFF PAUL NOA (T)
GEMA	DIANE ADAMS	MEDICAL UNIT	WEST-STEPHEN RUSSO, RICH DORAZIO EAST-TRAVIS MCGOWEN, MATTHEW LARICOS (T)
NORFOLK SOUTHERN	CHAD EDWARDS	COMT	WEST-KELLY TOWE; ROGER MENARD EAST-STEVEN LANDON
CLINCH CO EMA	WILL JOYCE; RANDY PATTEN	FOOD UNIT	STEPHAN MARSHALL BRANTLEY SMITH (T)
CHARLTON CO EMA	BRUCE YOUNG	ORDM	MARK MCCLELLAN, MICHAEL STIGLER (T) TAMARA KLINDT
GADOT	TREVOR BROWN	RCDM	LAUREN SMITH, JAKE CLEVINGER
NCFS	GREG SMITH	EQPM	KIRBY HENNINSSSEN; JASON MCHAN; JIM GACEY
NASSAU COUNTY EMS	BILLY E STEP	RADO	
5. Planning Section:		JOHN BETHEA STAGING AREA - BCMB (DAY)	RAY GONZALAS JAWANA STEPHENS (T)
CHIEF	DUANE DURGEE JOE BISHOP (T)	JOHN BETHEA STAGING AREA - BCMG (NIGHT)	BEN REICK
PSC2	JASON BRAUNSTEIN (T)	JOHN BETHEA STAGING AREA - STAM	ADAM DRUMMER
RESOURCES UNIT	SHAUN STEWART; TIFFANY PATE TOM WINSHIP; JEFF TURNER (T)	JOHN BETHEA STAGING AREA - EQMG	JOHN STRONG
STATUS CHECKIN	CARLA ROBERTS JESSICA VALDEZ	JOHN BETHEA STAGING AREA CAMP CREW BOSS	JUWANNA SAMPSON
SITUATION UNIT	SCOTT CROSBY STUART COOMBS		
DEMOBILIZATION UNIT	BOBBY CAHAL, DALE WINE (T)		
DOCUMENTATION UNIT	JAN FLEMING		
ITSS	DEAN GROE RANDALL FOUNTAIN		
TRAINING SPECIALIST	BRAD STEWART DAVID HUNT		
GIS SPECIALIST	DOMINIC MARCANIO, BRENDAN MULHOLLAND (T), ANDREW THOMPSON CLINT ROBERTS, KEVIN WINTER		
INCIDENT METEOROLOGIST	JOE GOUDSWARD		
9. Prepared By:	Name: SHAUN STEWART	Position/Title: RESL	Signature:
ICS 203	IAP Page	Date/Time: 05/22/2017 2000	

ORGANIZATION ASSIGNMENT LIST (ICS 203)

1. Incident Name: WEST MIMS		2. Operational Period: DAY SHIFT 0730-1930	
		Date/Time From: 05/23/2017 0730	Date/Time To: 05/23/2017 1930
		TUE	TUE
7. Operations Section:		BRANCH DIRECTOR	STEVE MILLER
OPS SECTION CHIEF	RICK DOLAN EAST-FRED BOEHM, WEST-BUCK KLINE	DIVISION/GROUP	A TOM TIPTON; JASON FORTHOFER JEFF BOSTWICK (T)
PLANNING OPS	TRENT INGRAM PHIL DANIELS (T)	DIVISION/GROUP	Y RANDY GREGORY SEAN BASSO (T)
SWING SHIFT OPS SECTION CHIEF (BRANCH I, III, IV)		DIVISION/GROUP	Z JASON LONGFELLOW
STRUCTURE PROTECTION SPECIALIST	JAY WALKER	7b. Air Operations Branch:	
		AIR OPS BRANCH DIRECTOR	JOHN BRAGG
Branch I		AIR SUPPORT GROUP SUPERVISOR	AL DRIESBACH
BRANCH DIRECTOR DAY	RON GARCIA	AIR TACTICAL GROUP SUPERVISOR	MARK NUNEZ, KEN MCLAUGHLIN
DIVISION/GROUP	DIV B RON CALHOUN KEITH FIELDS (T)	HEB1 POGO	MARC RUDKIN
DIVISION/GROUP	DIV C CHRIS ROBERTS PAUL AMUNDSON (T)		
DIVISION/GROUP	DIV D WALTER BOWERS HEATHER GRIFFIN (T)		
		8. Finance/Administration Section:	
DIVISION/GROUP	FL FFS CONTINGENCY ANDY LAMBORN	CHIEF	BETTY PALMIOTTO
DIVISION/GROUP	ROAD MAINTENANCE CANDICE KUTROSKY CHAD STOVER (T), CASEY OCONNER (T)	DEPUTY	DAWN CROUCH (T)
BRANCH DIRECTOR SWING SHIFT	LANCE DELGADO	PROCUREMENT UNIT	TOMMY PRICE
DIVISION/GROUP	SWING SHIFT KRIS CRODDY BRYCE THOMAS	CONTRACTING OFFICER	
		EQUIPMENT TIME RECORDER	DOUG CHASSEREAU SONYA YARA, RANDY TOTTEN (T)
		COST UNIT	ROBERT JESSELL VICKI WILSON
Branch III		TIME UNIT	MARCI GLOVER
BRANCH DIRECTOR	MARC CRAIN; CHRIS LUNDGREN (T)	PERSONNEL TIME RECORDER	MARTHA MILLER, LINDA STARLING BECKY HOPKINS, TRISH KITSMILLER, SARA RANDOLPH (T)
DIVISION/GROUP	IA GREGG BUCKALEW ARTURO GASDIK (T)	COMPENSATION UNIT	BRETT STEFFEN
DIVISION/GROUP	M DAVID SMITH JASON LAGO (T)		
DIVISION/GROUP	N KAREN SCHOLL CHRIS RANKIN (T)		
DIVISION/GROUP	O SHAWN ALEXANDER; ROB THORPE MICHAEL GUE (T)		
DIVISION/GROUP	STAGING ADAM DUMMER		
Branch IV			
9. Prepared By:	Name: SHAUN STEWART	Position/Title: RESL	Signature:
ICS 203	IAP Page	Date/Time: 05/22/2017 2000	



To: All Incident Personnel, West Mims Fire 2017

As the Unified Command Incident Commanders, we have a policy of “zero tolerance” of inappropriate behavior during incident operations. Any form of harassment, discriminatory practices, or disrespectful behavior will not be tolerated. Known or reported acts will be dealt with appropriately.

We are particularly concerned about the perception that alcohol has a place in any of the Incident facilities. It is not appropriate to indulge in alcoholic beverages during any fire assignment.

The National Team from the Southern Region has a policy of “NO ALCOHOL” from the time of dispatch until the time of physical release from the Incident. Members of the Team voluntarily comply with this policy; all incident personnel will be expected to do so also.

We endorse, support, and expect an attitude of mutual respect for all Incident personnel and the public we serve. We also, endorse the attitude and work ethic that places “Safety First, every time on every Incident.” We expect nothing less.

<p>/s/ Keith Mousel /s/ Mike Quesinberry Incident Commanders</p>
--



Fire Weather Forecast



FORECAST NO: 46
PREDICTION FOR: Tuesday
SHIFT DATE: May 23, 2017
FORECAST ISSUED: 1800 May 22, 2017

NAME OF FIRE: West Mims Fire
UNIT: Okefenokee National Wildlife Refuge
Incident Meteorologist: Joe Goudswaard 240-778-5279

Widespread showers and thunderstorms expected Tuesday night through Thursday morning.

DISCUSSION:

Another warm and overall humid day is expected across the incident Tuesday as a strong storm system starts to work its way through the region. Scattered showers will be possible this morning with the precipitation becoming more widespread during the afternoon, primarily driven by the sea breeze front. Any thunderstorm will be capable of producing gusty and erratic outflow winds, locally heavy downpours and lightning. Precipitation will become heavier and widespread after dark as a strong upper level disturbance lifts through. Rain is expected Wednesday and Wednesday night.

TUESDAY:

- WEATHER: Partly to mostly cloudy. Showers possible in the morning, showers and thunderstorms becoming more widespread in the afternoon.
 - WIND (20 FT): SW 6 to 10 mph. Gusts up to 15 mph in the afternoon.
 - MAX TEMPERATURES: 84-89
 - LAL: 4
 - MIXING HEIGHT: 4100
- CHANCE OF RAIN: 30% ➔ 70%
 RAINFALL: .25" to .50"
- MIN RH: 48-53%
 DISPERSION (MAX): 70
 TRANSPORT WINDS: SW 30 mph

TUESDAY NIGHT:

- WEATHER: Cloudy. Showers and Thunderstorms likely.
 - WIND (20 FT): SW 10 to 15 mph with gusts near 20 mph.
 - MIN TEMPERATURES: 69 to 74
 - LAL: 4
- MAX RH: 95-100%
 CHANCE OF RAIN: 80%
 MAX LVORI: 10
 RAINFALL: .50 to 1.00"

HOURLY WEATHER FORECAST (LST) Tuesday 1000 through Wednesday 0800

Time	1000	1200	1400	1600	1800	2000	2200	2400	0200	0400	0600	0800
Temp °F	79	81	83	85	83	78	74	73	72	71	70	72
RH %	80	67	58	52	65	76	87	90	97	99	100	99
Wind Dir	SW	SW	SW	SW	SW	SW	SW	SW	SW	SW	SW	SW
Wind Spd mph	5	7	10	10	10	10	10	8	8	6	6	6
Wind Gst mph	9	9	15	15	15	12						
Rain Chance%	30	40	40	50	70	70	70	70	60	50	50	80
Weather	Shwrs	Shwrs	Tstms	Tstms	Tstms	Tstms	Tstms	Tstrms	Tstms	Tstms	Tstms	Tstms

WEDNESDAY:

- WEATHER: Cloudy. Showers and thunderstorms likely. Some storms may be strong with gusty winds and locally heavy rain.
 - WIND (20 FT): SW 10 to 15 mph with gusts near 20 mph.
 - MAX TEMPERATURES: 81-86
 - LAL: 3
 - MIXING HEIGHT: 3200
- CHANCE RAIN: 80%
 RAINFALL: .75" to 1.25"
- MIN RH: 57-62%
 DISPERSION (MAX): 50
 TRANSPORT WINDS: SW 40 mph

Sunrise Tuesday: 6:32 am Sunset Tuesday: 8:22 pm Sunrise Wednesday: 6:31 am
Thunderstorms imply gusty and erratic winds, locally heavy rain and lightning

RAWS Observations:

Jones
Island



Eddy
Tower



OKE
East



OKE
NW



FIRE BEHAVIOR FORECAST	
FORECAST NUMBER: #36	TYPE OF FIRE: Wildland
FIRE NAME: West Mims	OPERATIONAL PERIOD: 05/23/2017 Day Operational Period
DATE ISSUED: 05/22/2017	TIME ISSUED: 1800
UNIT: Okefenokee National Wildlife Refuge	WRITTEN: Signed: Brad Smith FBAN 470-366-6313

FUEL ASSUMPTIONS: The major fuel types found in the West Mims Fire are fuel model SH3 (Brush), fuel model 7 (Southern Rough) and fuel model 8 (Timber litter). High risk fuels (those that will support active crown fire) include pine plantations with a palmetto/gallberry brush understory (FM7). Live canopy fuel moistures in pine and brush are below average and will support active crown fire when critical fire weather is present. Current fuel dryness, as represented by KBDI and ERC G, is above average between the 75th and 90th percentiles. Both ERC and KBDI were above the critical 90th percentile on May 8th when fuel dryness supported active crown fire and large fire growth.

Calculated 1 hour fine dead fuel moisture: 8% 10 hour fuel moisture: 11% 100 hour fuel moisture: 15%

WEATHER SUMMARY: Afternoon thunderstorms will develop and coverage will increase into the overnight hours

WIND (20 FT): SW 6 to 10 mph with gusts to 15 in the afternoon.
 MAX TEMPERATURES: 84-89 MIN RH: 45-50%
 LAL: 4 CHANCE OF RAIN: 50% AMOUNT: .25" to .50" MAX DISPERSION:70
 MIXING HEIGHT:3000 TRANSPORT WINDS: SSW 30 mph

General Fire Behavior Forecast: Drought conditions persist across the fire area. Fire will easily transition from surface into the canopy when ladder fuels are present; Expect long range spotting from active crown fire. A fires resistance to control increases when one or more of the fire behavior thresholds are exceeded. Increased fire intensity, higher rate of spread and higher crown fire potential are possible when these thresholds are exceeded.

Critical fire behavior thresholds:
 Temp >90°, RH < 40%, Dispersion index greater than 60

Specific: All Branches: There will be a brief window of opportunity this afternoon as thunderstorms build in the area for active fire behavior to occur in the high risk southern rough fuel beds. If an ignition occurs in these fuel beds, the highly unstable conditions and outflow/inflow winds from nearby storms could produce fires with a moderate resistance to control. This window of fire potential will close as rain coverage increases into the evening and night time hours.

Fuel Type	Rates of Spread	Flame Length	Max Spot Distance	Probability of Ignition	Torching / Crowning Potential / Flame Lengths
20' winds @ 8 and 12mph					
Southern Rough(pine w/palmetto/gallberry)	20-30 ch/hr.	5-7 feet	.2 mile	40%	Torching likely with 12 mph gust
Timber Litter (pine litter reburn)	1-2 ch/hr.	1-2 feet	50 feet	40%	Minor torching in shrub
Brush (Swamp)	4-6 ch/hr.	2-4 feet	.2 mile	40%	Possible torching if canopy exists

AIR OPERATIONS: Thunderstorm activity will increase in the afternoon hours

FIRE BEHAVIOR SAFETY: Most folks are familiar with dangers of thunderstorm outflow winds. Developing Thunderstorms also draw in winds to feed their development. Thunderstorm inflow winds, while not as potentially strong as outflow winds, can still cause sudden and adverse changes in fire behavior.

Reference: 1 chain = 66 feet, 20 chains = .25 mile, 40 chains = .50 mile, 60 chains = .75 mile, 80 chains = 1 Mile

IA Protocol

- Determine LAT/LONG.
- Notify OSC and/or OPBD.
- OSC/OPBD will notify Unified IC's for approval to assist with ground or aviation resources.

In Georgia:

Southern Response Dispatch (229) 386-3846

If no contact-Buck Kline (912) 678-2694

In Florida-

Lake City (Baker, Columbia, and Hamilton Counties): (386) 243-6243

Jacksonville (Nassau County): (904) 266-8351

If no contact-Rick Dolan (352) 353-5101

For OKR-

Brantley Boatright Dispatch (912) 496-7366 x 230
or (912) 276-0023

Division/Group Assignment List (ICS 204 WF)

1. Incident Name:			3.			
WEST MIMS			Branch:		Division/Group:	
2. Operational Period: DAY SHIFT 0730-1930			I		B	
Date/Time From: 05/23/2017 0730 TUE		Date/Time To: 05/23/2017 1930 TUE				
4. Operations Personnel						
PLANNING OPERATIONS CHIEF		TRENT INGRAM PHIL DANIELS (T)		OPERATIONS CHIEF		RICK DOLAN BUCK KLINE
BRANCH DIRECTOR		RON GARCIA		DIVISION/GROUP SUPERVISOR		RON CALHOUN KEITH FIELDS (T)
SAFETY		LARRY GRUBBS CLAY STEPHENS (T)		AIR TACTICAL GROUP SUPERVISOR		MARK NUNEZ KEN MCLAUGHLIN
5. Resources Assigned this Period						
Strike Team / Task Force / Resource Designator		LWD	Leader	Number Persons	Drop Off PT./Time	Pick Up PT./Time
ENG6 - NC-POR PLE1 E-2		06/03	CORY WATERS	2	ICP/0730	ICP/1930
ENG6 SOUTHEAST FOREST RESOURCES E-58		05/30	HAWTHORNE	3	ICP/0730	ICP/1930
ENG6 - WILDLANDS FIRE SERVICE - D65331 - 1 E-144		05/24	MICHAEL MADISON	2	ICP/0730	ICP/1930
ENG6 - NMSNF - JEMEZ RD - ENGINE 631 E-763		05/29	KARL KEEMAN	6	ICP/0730	ICP/1930
WTS1- SUPPORT WILDLANDS FIRE SERVICE I E-132		05/30	CARSON SWEENEY	1	ICP/0730	ICP/1930
STEN O-605		05/28	COURTNEY WENZEL	1	ICP/0730	ICP/1930
STEQ O-656		05/31	KEN COOPER	1	ICP/0730	ICP/1930
TPL4 - UNIT #8191 - HUNTSVILLE E-570		05/25	CROCKETT PEGODA	2	ICP/0730	ICP/1930
TPL4 TX FOREST SERVICE TRACTOR PLOW E-471		05/25	TIMOTHY GILL	2	ICP/0730	ICP/1930
TPL4 - UNIT #6192 - NEW BOSTON E-467		05/25	LEE ANDERSEN	2	ICP/0730	ICP/1930
TPL4 - UNIT #7292 - JACKSONVILLE E-571		05/26	JACOB CROWLEY	2	ICP/0730	ICP/1930
EMPF O-543 470-366-6301		05/26	PENNY MCDONAGH	1	ICP/0730	ICP/1930
SOF2 O-252		05/30	CHRIS CHURCH	1	ICP/0730	ICP/1930
8. Division/Group Communication Summary						
Function	Channel	RX Frequency N/W	RX Tone/NAC	TX Frequency N/W	TX Tone/NAC	Mode
AIR TO GROUND	4	169.2000N	NONE	169.2000N	NONE	A
COMMAND	8	159.2700N	156.7	151.1000N	123.0	A
TACTICAL	13	159.4125N	NONE	159.4125N	NONE	A
AIR TO GROUND	14	166.6750N	NONE	166.6750N	NONE	A
AIR TO GROUND	15	169.1500N	NONE	169.1500N	NONE	A
AIR GUARD	16	168.6250N	NONE	168.6250N	110.9	A
9. Prepared By (Resource Unit Leader)			Approved By (Planning Section Chief)		Date	Time
SHAUN STEWART			DUANE DURGEE		05/22/2017	2000

Division/Group Assignment List (ICS 204 WF)

1. Incident Name:			3.			
WEST MIMS			I		B	
2. Operational Period: DAY SHIFT 0730-1930						
Date/Time From: 05/23/2017 0730 TUE		Date/Time To: 05/23/2017 1930 TUE				
4. Operations Personnel						
PLANNING OPERATIONS CHIEF		TRENT INGRAM PHIL DANIELS (T)		OPERATIONS CHIEF		RICK DOLAN BUCK KLINE
BRANCH DIRECTOR		RON GARCIA		DIVISION/GROUP SUPERVISOR		RON CALHOUN KEITH FIELDS (T)
SAFETY		LARRY GRUBBS CLAY STEPHENS (T)		AIR TACTICAL GROUP SUPERVISOR		MARK NUNEZ KEN MCLAUGHLIN
6. Control Operations/Work Assignments:						
Task						
<ul style="list-style-type: none"> • Patrol and mop up fuels appropriate to fuel type and anticipated weather and fire behavior. • Respond to any new starts within the division. 						
Purpose						
<ul style="list-style-type: none"> • Keep fire north of GA 94/FL 2. 						
End State						
<ul style="list-style-type: none"> • Fire is contained by adequate control line to reduce threat to escape; minimizing damage to private timberlands, private lands, and other resource values at risk. 						
7. Special Instructions:						
Ensure LCES is in place before operations begin and stay hydrated. Drive defensively and with lights on at all times. Identify escape routes.						
For IA protocol see page 7						
Medical Emergency Channel: Command						
ETA for Ambulance to Scene:						
Air: 20 – 30 mins						
Ground: 10 - 15 mins Paved roads only.						
IWI – IC or approved person will use Channel 16 (Air Guard) for contact with air ambulance						
Air Ambulance landing zone to be determined by IWI – IC						
Utilize engines to provide dust abatement, as needed, prior to air ambulance landing						
8. Division/Group Communication Summary						
Function	Channel	RX Frequency N/W	RX Tone/NAC	TX Frequency N/W	TX Tone/NAC	Mode
AIR TO GROUND	4	169.2000N	NONE	169.2000N	NONE	A
COMMAND	8	159.2700N	156.7	151.1000N	123.0	A
TACTICAL	13	159.4125N	NONE	159.4125N	NONE	A
AIR TO GROUND	14	166.6750N	NONE	166.6750N	NONE	A
AIR TO GROUND	15	169.1500N	NONE	169.1500N	NONE	A
AIR GUARD	16	168.6250N	NONE	168.6250N	110.9	A
9. Prepared By (Resource Unit Leader)			Approved By (Planning Section Chief)		Date	Time
SHAUN STEWART			DUANE DURGEE		05/22/2017	2000

Division/Group Assignment List (ICS 204 WF)

1. Incident Name:			3.			
WEST MIMS			Branch:		Division/Group:	
2. Operational Period: DAY SHIFT 0730-1930			I		C	
Date/Time From: 05/23/2017 0730 TUE		Date/Time To: 05/23/2017 1930 TUE				
4. Operations Personnel						
PLANNING OPERATIONS CHIEF		TRENT INGRAM PHIL DANIELS (T)		OPERATIONS CHIEF		RICK DOLAN BUCK KLINE
BRANCH DIRECTOR		RON GARCIA		DIVISION/GROUP SUPERVISOR		CHRIS ROBERTS PAUL AMUNDSON (T)
SAFETY		LARRY GRUBBS CLAY STEPHENS (T)		AIR TACTICAL GROUP SUPERVISOR		MARK NUNEZ KEN MCLAUGHLIN
5. Resources Assigned this Period						
Strike Team / Task Force / Resource Designator		LWD	Leader	Number Persons	Drop Off PT./Time	Pick Up PT./Time
WTS2 - STRICKLANDS TRACTOR & AUTO E-265		05/27	LUCIUS CORBITT	2	ICP/0730	ICP/1930
WTS2 - SUPPORT TIPTON & YOUNG E-135		05/30	KEN SWAIN	1	ICP/0730	ICP/1930
STEQ O-564		05/27	RANDALL MOSLEY	1	ICP/0730	ICP/1930
TPL2 - GFC3230 E-688		05/27	DAVID MASON	1	ICP/0730	ICP/1930
TPL3 - GFC1536 E-689		05/27	WALTER BIRD	1	ICP/0730	ICP/1930
TPL3 - GFC3186 E-687		05/27	WILLIAM K BRADY	1	ICP/0730	ICP/1930
STEQ O-512		05/25	DUKE CAMPBELL	1	ICP/0730	ICP/1930
TPL2 - GFC1074 E-669		05/25	JIMMY ANDERSON	1	ICP/0730	ICP/1930
TPL4 - GFC2672 E-668		05/25	CLIFF LEWIS	1	ICP/0730	ICP/1930
TPL3 - GFC1208 E-670		05/25	MATT DUGGAN		ICP/0730	ICP/1930
CREW - T2IA - PATRICK ENVIRONMENTAL, INC. - NCC - 20A C-11		05/29	AUSTIN HERGERT	19	ICP/0730	ICP/1930
TFLD O-597		05/29	CHAD KIDD	1	ICP/0730	ICP/1930
TFLD (T) O-701		05/30	TRAVIS CARSON	1	ICP/0730	ICP/1930
8. Division/Group Communication Summary						
Function	Channel	RX Frequency N/W	RX Tone/NAC	TX Frequency N/W	TX Tone/NAC	Mode
AIR TO GROUND	4	169.2000N	NONE	169.2000N	NONE	A
COMMAND	8	159.2700N	156.7	151.1000N	123.0	A
TACTICAL	9	159.2850N	NONE	159.2850N	156.7	A
AIR TO GROUND	14	166.6750N	NONE	166.6750N	NONE	A
AIR TO GROUND	15	169.1500N	NONE	169.1500N	NONE	A
AIR GUARD	16	168.6250N	NONE	168.6250N	110.9	A
9. Prepared By (Resource Unit Leader)			Approved By (Planning Section Chief)		Date	Time
SHAUN STEWART			DUANE DURGEE		05/22/2017	2000

Division/Group Assignment List (ICS 204 WF)

1. Incident Name:			3.			
WEST MIMS			Branch:		Division/Group:	
2. Operational Period: DAY SHIFT 0730-1930			I		C	
Date/Time From: 05/23/2017 0730 TUE		Date/Time To: 05/23/2017 1930 TUE				
4. Operations Personnel						
PLANNING OPERATIONS CHIEF		TRENT INGRAM PHIL DANIELS (T)		OPERATIONS CHIEF		RICK DOLAN BUCK KLINE
BRANCH DIRECTOR		RON GARCIA		DIVISION/GROUP SUPERVISOR		CHRIS ROBERTS PAUL AMUNDSON (T)
SAFETY		LARRY GRUBBS CLAY STEPHENS (T)		AIR TACTICAL GROUP SUPERVISOR		MARK NUNEZ KEN MCLAUGHLIN
5. Resources Assigned this Period						
Strike Team / Task Force / Resource Designator		LWD	Leader	Number Persons	Drop Off PT./Time	Pick Up PT./Time
ENG6 - WV-MOF - E-641 E-870		06/02	JARED D STAGGS	3	ICP/0730	ICP/1930
ENG4 - NC-NCS - PP-1434 - D3 E-542		06/06	WALTER GORDON	2	ICP/0730	ICP/1930
EMPF E-375 470-532-8807		05/23	GARY ALLEN FORD	1	ICP/0730	ICP/1930
SOF2 O-541 470-366-6299		05/25	LOUIE CASAUS	1	ICP/0730	ICP/1930
6. Control Operations/Work Assignments:						
Task						
<ul style="list-style-type: none"> • Patrol and mop up fuels appropriate to fuel type and anticipated weather and fire behavior. • Respond to any new starts within the division. • Create or improve fireline around logging debris in coordination with logging operators. 						
Purpose						
<ul style="list-style-type: none"> • Keep fire east of swamp edge fire break. 						
End State						
<ul style="list-style-type: none"> • Fire is contained by adequate control line to reduce threat to escape; minimizing damage to private timberlands, private lands, and other resource values at risk. 						
8. Division/Group Communication Summary						
Function	Channel	RX Frequency N/W	RX Tone/NAC	TX Frequency N/W	TX Tone/NAC	Mode
AIR TO GROUND	4	169.2000N	NONE	169.2000N	NONE	A
COMMAND	8	159.2700N	156.7	151.1000N	123.0	A
TACTICAL	9	159.2850N	NONE	159.2850N	156.7	A
AIR TO GROUND	14	166.6750N	NONE	166.6750N	NONE	A
AIR TO GROUND	15	169.1500N	NONE	169.1500N	NONE	A
AIR GUARD	16	168.6250N	NONE	168.6250N	110.9	A
9. Prepared By (Resource Unit Leader)			Approved By (Planning Section Chief)		Date	Time
SHAUN STEWART			DUANE DURGEE		05/22/2017	2000

Division/Group Assignment List (ICS 204 WF)

1. Incident Name:			3.			
WEST MIMS			Branch:		Division/Group:	
2. Operational Period: DAY SHIFT 0730-1930			I		C	
Date/Time From: 05/23/2017 0730 TUE		Date/Time To: 05/23/2017 1930 TUE				
4. Operations Personnel						
PLANNING OPERATIONS CHIEF		TRENT INGRAM PHIL DANIELS (T)		OPERATIONS CHIEF		RICK DOLAN BUCK KLINE
BRANCH DIRECTOR		RON GARCIA		DIVISION/GROUP SUPERVISOR		CHRIS ROBERTS PAUL AMUNDSON (T)
SAFETY		LARRY GRUBBS CLAY STEPHENS (T)		AIR TACTICAL GROUP SUPERVISOR		MARK NUNEZ KEN MCLAUGHLIN
7. Special Instructions:						
<p>Ensure LCES is in place before operations begin and stay hydrated. Drive defensively and with lights on at all times. Identify escape routes. Logging operations are continuing. Stay clear of cutting areas. Please be mindful of logging operations that will be ongoing. Ensure that all personnel stay clear of felling operations. Pay attention for potential reburn in logging area. Work with Gilyard Logging foreman on any suppression actions within the logging area.</p> <p>For IA protocol see page 7</p> <p>Additional Resources: Superior Pine Tractor Plow D6; SP-83, SP-85, SP-87 Medical Emergency Channel: Command ETA for Ambulance to Scene: Air: 20 – 30 mins Ground: 10 - 15 mins Paved roads only. IWI – IC or approved person will use Channel 16 (Air Guard) for contact with air ambulance Air Ambulance landing zone to be determined by IWI – IC Utilize engines to provide dust abatement, as needed, prior to air ambulance landing</p>						
8. Division/Group Communication Summary						
Function	Channel	RX Frequency N/W	RX Tone/NAC	TX Frequency N/W	TX Tone/NAC	Mode
AIR TO GROUND	4	169.2000N	NONE	169.2000N	NONE	A
COMMAND	8	159.2700N	156.7	151.1000N	123.0	A
TACTICAL	9	159.2850N	NONE	159.2850N	156.7	A
AIR TO GROUND	14	166.6750N	NONE	166.6750N	NONE	A
AIR TO GROUND	15	169.1500N	NONE	169.1500N	NONE	A
AIR GUARD	16	168.6250N	NONE	168.6250N	110.9	A
9. Prepared By (Resource Unit Leader)			Approved By (Planning Section Chief)		Date	Time
SHAUN STEWART			DUANE DURGEE		05/22/2017	2000

Division/Group Assignment List (ICS 204 WF)

1. Incident Name:				3.			
WEST MIMS				Branch:		Division/Group:	
2. Operational Period: DAY SHIFT 0730-1930				I		D	
Date/Time From: 05/23/2017 0730 TUE		Date/Time To: 05/23/2017 1930 TUE					
4. Operations Personnel							
PLANNING OPERATIONS CHIEF		TRENT INGRAM PHIL DANIELS (T)		OPERATIONS CHIEF		RICK DOLAN BUCK KLINE	
BRANCH DIRECTOR		RON GARCIA		DIVISION/GROUP SUPERVISOR		WALTER BOWERS HEATHER GRIFFIN (T)	
SAFETY		LARRY GRUBBS CLAY STEPHENS (T)		AIR TACTICAL GROUP SUPERVISOR		MARK NUNEZ, KEN MCLAUGHLIN	
5. Resources Assigned this Period							
Strike Team / Task Force / Resource Designator		LWD	Leader	Number Persons	Drop Off PT./Time	Pick Up PT./Time	
ENG6 - OSCEOLA - 641 E-157		05/27	JUSTIN KNOWLES	3	ICP/0730	ICP/1930	
ENG6 - WILDLANDS FIRE SERVICE E-262		06/02	CHAD ANDERSON	3	ICP/0730	ICP/1930	
ENG6 - ENGINE - 4-87 E-613		05/25	JAMES HOONANIE	3	ICP/0730	ICP/1930	
ENG6 - ENGINE - 4-86 E-610		05/25	MURRAY ROSENGARTEN	3	ICP/0730	ICP/1930	
ENG6 AR-OUF-PCS #691 E-838		05/29	LARRY SHORES	3	ICP/0730	ICP/1930	
ENG6 WY-RSD 1602 E-849		05/29	RICHARD HOWE	3	ICP/0730	ICP/1930	
DO22 OK-OKS ECU #2178 E-503		05/24	WILLIAM OWENS	1	ICP/0730	ICP/1930	
DO23- WELBORN AQUA HAUL AND FIRE SERVICES, INC. E-514		05/25	JERRY WELBORN	2	ICP/0730	ICP/1930	
TFLD O-419		05/23	GEORGE M LIBERCAJT	1	ICP/0730	ICP/1930	
TFLD (T) E-613.3		05/25	CHRIS BROOKS	1	ICP/0730	ICP/1930	
TFLD O-596		05/27	ALFRED ALLMAN	1	ICP/0730	ICP/1930	
TFLD O-649		05/28	RANDY OKON	1	ICP/0730	ICP/1930	
STEQ O-548		05/26	PAUL OLTROGGE	1	ICP/0730	ICP/1930	
EMPF E-375		05/24	GARY ALLEN FORD	1			
SOF2 O-541 470-366-6299		05/25	LOUIE CASAUS	1	ICP/0730	ICP/1930	
8. Division/Group Communication Summary							
Function	Channel	RX Frequency N/W	RX Tone/NAC	TX Frequency N/W	TX Tone/NAC	Mode	
COMMAND	2	159.1200N	NONE	151.3700N	100.0	A	
AIR TO GROUND	4	169.2000N	NONE	169.2000N	NONE	A	
TACTICAL	13	159.4125N	NONE	159.4125N	NONE	A	
AIR TO GROUND	14	166.6750N	NONE	166.6750N	NONE	A	
AIR TO GROUND	15	169.1500N	NONE	169.1500N	NONE	A	
AIR GUARD	16	168.6250N	NONE	168.6250N	110.9	A	
9. Prepared By (Resource Unit Leader)			Approved By (Planning Section Chief)			Date	Time
SHAUN STEWART			DUANE DURGEE			05/22/2017	2000

Division/Group Assignment List (ICS 204 WF)

1. Incident Name:			3.			
WEST MIMS			Branch:		Division/Group:	
2. Operational Period: DAY SHIFT 0730-1930			I		D	
Date/Time From: 05/23/2017 0730 TUE		Date/Time To: 05/23/2017 1930 TUE				
4. Operations Personnel						
PLANNING OPERATIONS CHIEF		TRENT INGRAM PHIL DANIELS (T)		OPERATIONS CHIEF		
BRANCH DIRECTOR		RON GARCIA		DIVISION/GROUP SUPERVISOR		
SAFETY		LARRY GRUBBS CLAY STEPHENS (T)		AIR TACTICAL GROUP SUPERVISOR		
				RICK DOLAN BUCK KLINE WALTER BOWERS HEATHER GRIFFIN (T) MARK NUNEZ, KEN MCLAUGHLIN		
6. Control Operations/Work Assignments:						
Task						
<ul style="list-style-type: none"> Patrol and mop up fuels appropriate to fuel type and anticipated weather and fire behavior. Respond to any new starts within the division. Monitor fire activity and location in the vicinity of Billies Island. 						
Purpose						
<ul style="list-style-type: none"> Keep fire south of the Suwannee Canal. 						
End State						
<ul style="list-style-type: none"> Fire activity north and west of Billy's Island has been detected and appropriate action has been initiated. Fire is contained by adequate control line to reduce threat to escape; minimizing damage to private timberlands, private lands, and other resource values at risk. 						
7. Special Instructions:						
Ensure LCES is in place before operations begin and stay hydrated. Drive defensively and with lights on at all times. Identify escape routes.						
For IA protocol see page 7						
Medical Emergency Channel: Command ETA for Ambulance to Scene: Air: 20 – 30 mins Ground: 10 - 15 mins Paved roads only. IWI – IC or approved person will use Channel 16 (Air Guard) for contact with air ambulance Air Ambulance landing zone to be determined by IWI – IC Utilize engines to provide dust abatement, as needed, prior to air ambulance landing						
8. Division/Group Communication Summary						
Function	Channel	RX Frequency N/W	RX Tone/NAC	TX Frequency N/W	TX Tone/NAC	Mode
COMMAND	2	159.1200N	NONE	151.3700N	100.0	A
AIR TO GROUND	4	169.2000N	NONE	169.2000N	NONE	A
TACTICAL	13	159.4125N	NONE	159.4125N	NONE	A
AIR TO GROUND	14	166.6750N	NONE	166.6750N	NONE	A
AIR TO GROUND	15	169.1500N	NONE	169.1500N	NONE	A
AIR GUARD	16	168.6250N	NONE	168.6250N	110.9	A
9. Prepared By (Resource Unit Leader)			Approved By (Planning Section Chief)		Date	Time
SHAUN STEWART			DUANE DURGEE		05/22/2017	2000

Division/Group Assignment List (ICS 204 WF)

1. Incident Name:			3.			
WEST MIMS			I		Division/Group: FL FFS CONTINGENCY	
2. Operational Period: DAY SHIFT 0730-1930						
Date/Time From: 05/23/2017 0730 TUE		Date/Time To: 05/23/2017 1930 TUE				
4. Operations Personnel						
PLANNING OPERATIONS CHEIF		TRENT INGRAM PHIL DANIELS (T)		OPERATIONS CHIEF		RICK DOLAN BUCK KLINE
BRANCH DIRECTOR		RON GARCIA		DIVISION/GROUP SUPERVISOR		ANDY LAMBORN
SAFETY		LARRY GRUBBS CLAY STEPHENS (T)		AIR TACTICAL GROUP SUPERVISOR		MARK NUNEZ KEN MCLAUGHLIN
5. Resources Assigned this Period						
Strike Team / Task Force / Resource Designator		LWD	Leader	Number Persons	Drop Off PT./Time	Pick Up PT./Time
ENG6				2	EAST CAMP/0730	EAST CAMP /1930
TPL2 JOHN BETHEA				1	EAST CAMP/0730	EAST CAMP /1930
TPL2				1	EAST CAMP/0730	EAST CAMP /1930
DOZ2				1	EAST CAMP/0730	EAST CAMP /1930
DOZ2				1	EAST CAMP/0730	EAST CAMP /1930
DOZ2				1	EAST CAMP/0730	EAST CAMP /1930
DOZ1				1	EAST CAMP/0730	EAST CAMP /1930
STDZ			ANDY LAMBORN	1	EAST CAMP/0730	EAST CAMP /1930
SOF2 O-586		05/27	PHILLIP YOUNG	1	EAST CAMP/0730	EAST CAMP /1930
NC- D4 STRIKE TEAM E-468		06/06		6	EAST CAMP/0730	EAST CAMP /1930
NC- D4 STRIKE TEAM E-469		06/06	TIMOTHY LEE GODWIN	1	EAST CAMP/0730	EAST CAMP /1930
TRACTOR PLOW - T2 - NC-NCS - 5X35 E-470		06/06		2	EAST CAMP/0730	EAST CAMP /1930
TPL 2 - PENDER LAND E-833		06/01	JOHN DUNN		EAST CAMP/0730	EAST CAMP /1930
STEQ E-468.4.2		06/06	RAYMOND STRICKLAND		EAST CAMP/0730	EAST CAMP /1930
STEQ E-468.5.2		06/06	BLAKE THOMAS		EAST CAMP/0730	EAST CAMP /1930
8. Division/Group Communication Summary						
Function	Channel	RX Frequency N/W	RX Tone/NAC	TX Frequency N/W	TX Tone/NAC	Mode
COMMAND	2	159.1200N	NONE	151.3700N	100.0	A
AIR TO GROUND	4	169.2000N	NONE	169.2000N	NONE	A
TACTICAL	6	159.3900N	NONE	159.3900N	156.7	A
AIR TO GROUND	14	166.6750N	NONE	166.6750N	NONE	A
AIR TO GROUND	15	169.1500N	NONE	169.1500N	NONE	A
AIR GUARD	16	168.6250N	NONE	168.6250N	110.9	A
9. Prepared By (Resource Unit Leader)			Approved By (Planning Section Chief)		Date	Time
SHAUN STEWART			DUANE DURGEE		05/22/2017	2000

Division/Group Assignment List (ICS 204 WF)

1. Incident Name:			3.				
WEST MIMS			I	Branch:		Division/Group:	
2. Operational Period: DAY SHIFT 0730-1930				I		FL FFS CONTINGENCY	
Date/Time From: 05/23/2017 0730 TUE		Date/Time To: 05/23/2017 1930 TUE					
4. Operations Personnel							
PLANNING OPERATIONS CHEIF		TRENT INGRAM PHIL DANIELS (T)		OPERATIONS CHIEF		RICK DOLAN BUCK KLINE	
BRANCH DIRECTOR		RON GARCIA		DIVISION/GROUP SUPERVISOR		ANDY LAMBORN	
SAFETY		LARRY GRUBBS CLAY STEPHENS (T)		AIR TACTICAL GROUP SUPERVISOR		MARK NUNEZ KEN MCLAUGHLIN	
6. Control Operations/Work Assignments:							
Purpose:							
<ul style="list-style-type: none"> • To provide suppression support for incident. 							
Task:							
<ul style="list-style-type: none"> • Resources are staged at John Bethea State Forest headquarters. • Resources are ready upon calling for IA or extended attack. 							
End State:							
<ul style="list-style-type: none"> • Ready support resources to respond to protect structures, timberland and resource values at risk. 							
7. Special Instructions:							
<p>Ensure LCES is in place before operations begin. Drive defensively and with lights on at all times. Assure common communication per IAP Comm Plan is established before engagement.</p> <p>Medical Emergency Channel: Command ETA for Ambulance to Scene: Air: 20 – 30 mins Ground: 10 - 15 mins Paved roads only. IWI – IC or approved person will use Channel 16 (Air Guard) for contact with air ambulance Air Ambulance landing zone to be determined by IWI – IC Utilize engines to provide dust abatement, as needed, prior to air ambulance landing</p> <p>Contact Rick Dolan, FL FSS Unified IC 352-222-4420 when activating contingency resources.</p> <p>For IA protocol see page 7</p>							
8. Division/Group Communication Summary							
Function	Channel	RX Frequency N/W	RX Tone/NAC	TX Frequency N/W	TX Tone/NAC	Mode	
COMMAND	2	159.1200N	NONE	151.3700N	100.0	A	
AIR TO GROUND	4	169.2000N	NONE	169.2000N	NONE	A	
TACTICAL	6	159.3900N	NONE	159.3900N	156.7	A	
AIR TO GROUND	14	166.6750N	NONE	166.6750N	NONE	A	
AIR TO GROUND	15	169.1500N	NONE	169.1500N	NONE	A	
AIR GUARD	16	168.6250N	NONE	168.6250N	110.9	A	
9. Prepared By (Resource Unit Leader)			Approved By (Planning Section Chief)		Date	Time	
SHAUN STEWART			DUANE DURGEE		05/22/2017	2000	

Division/Group Assignment List (ICS 204 WF)

1. Incident Name:			3.			
WEST MIMS			I		Branch:	
2. Operational Period: DAY SHIFT 0730-1930					Division/Group:	
Date/Time From: 05/23/2017 0730 TUE		Date/Time To: 05/23/2017 1930 TUE		WEST ROAD MAINTENANCE		
4. Operations Personnel						
OPERATIONS CHIEF		RICK DOLAN BUCK KLINE		THSP ROADS		
BRANCH DIRECTOR		RON GARCIA		DIVISION/GROUP SUPERVISOR		
SAFETY		LARRY GRUBBS CLAY STEPHENS (T)		AIR TACTICAL GROUP SUPERVISOR		
				CANDICE KUTROSKY, CHRIS CHAD STOVER (T), CASEY OCONNER		
				MARK NUNEZ KEN MCLAUGHLIN		
5. Resources Assigned this Period						
Strike Team / Task Force / Resource Designator		LWD	Leader	Number Persons	Drop Off PT./Time	Pick Up PT./Time
DOZ2 - AR # 6640 E-512		05/25	WESTLEY WHISENHUNT	1	EAST CAMP/0730	EAST CAMP/1930
EXCA (ANY TYPE) - VIN# 500242 E-626		05/30	ALEX CORNEILIUS	1	EAST CAMP/0730	EAST CAMP/1930
GRD1 - VIN# 625863 E-866		06/01	BRIAN JENKINS	1	EAST CAMP/0730	EAST CAMP/1930
GRD2 - MOORE'S QUALITY EARTHMOVING, INC E-641		05/29	ERIC MOORE	2	EAST CAMP/0730	EAST CAMP/1930
GRD2 - R.O.T. RANCH CONSTRUCTION E-639		05/26	TRAVIS WORRELL	1	EAST CAMP/0730	EAST CAMP/1930
GRD2 - R.O.T. RANCH CONSTRUCTION E-234		05/21	ROBBY WORRELL	1	EAST CAMP/0730	EAST CAMP/1930
GRD - CORNELIUS FARMS - DT01 E-941		05/31			EAST CAMP/0730	EAST CAMP/1930
TDMP - VIN# 54083 E-624		05/28	ALEX CORNEIL	2	EAST CAMP/0730	EAST CAMP/1930
TDMP - VIN# 64094 E-625		05/30	WILLIAM DICKERSON	2	EAST CAMP/0730	EAST CAMP/1930
TDMP - CORNELIUS FARMS # 17006 E-879		05/31	EDGAR DIXON	1	EAST CAMP/0730	EAST CAMP/1930
TDMP - CORNELIUS FARMS #633987 E-880		05/31	SAMMY HENDRIX	1	EAST CAMP/0730	EAST CAMP/1930
WTS2 - VIN# 26825 E-408		05/28	RICHARD PETERS	1	EAST CAMP/0730	EAST CAMP/1930
WTS2 - HOME STYLE WATER TENDIN' E-644		05/29	JOHNNY CASTILLO	1	EAST CAMP/0730	EAST CAMP/1930
WTS2 - TIPTON & YOUNG CONSTRUCT E-347		05/26	ROBERT COYLE	1	EAST CAMP/0730	EAST CAMP/1930
WTS2 E-746		05/31	DANNIE YOUMAS	1	EAST CAMP/0730	EAST CAMP/1930
WTS2 - TIPTON & YOUNG CONSTRUCT E-313		05/25	WOODY BARGERON	1	EAST CAMP/0730	EAST CAMP/1930
WT2 TIPTON & YOUNG CONST E-340		06/04	DEVIN MCHZLEY	1	EAST CAMP/0730	EAST CAMP/1930
8. Division/Group Communication Summary						
Function	Channel	RX Frequency N/W	RX Tone/NAC	TX Frequency N/W	TX Tone/NAC	Mode
COMMAND	2	159.1200N	NONE	151.3700N	100.0	A
AIR TO GROUND	4	169.2000N	NONE	169.2000N	NONE	A
TACTICAL	6	159.3900N	NONE	159.3900N	156.7	A
AIR TO GROUND	14	166.6750N	NONE	166.6750N	NONE	A
AIR TO GROUND	15	169.1500N	NONE	169.1500N	NONE	A
AIR GUARD	16	168.6250N	NONE	168.6250N	110.9	A
9. Prepared By (Resource Unit Leader)			Approved By (Planning Section Chief)		Date	Time
SHAUN STEWART			DUANE DURGEE		05/22/2017	2000

Division/Group Assignment List (ICS 204 WF)

1. Incident Name:			3.			
WEST MIMS			I		Division/Group: WEST ROAD MAINTENANCE	
2. Operational Period: DAY SHIFT 0730-1930						
Date/Time From: 05/23/2017 0730 TUE		Date/Time To: 05/23/2017 1930 TUE				
4. Operations Personnel						
OPERATIONS CHIEF		RICK DOLAN BUCK KLINE		THSP ROADS		
BRANCH DIRECTOR		RON GARCIA		DIVISION/GROUP SUPERVISOR		CANDICE KUTROSKY, CHRIS CHAD STOVER (T), CASEY OCONNER
SAFETY		LARRY GRUBBS CLAY STEPHENS (T)		AIR TACTICAL GROUP SUPERVISOR		MARK NUNEZ KEN MCLAUGHLIN
5. Resources Assigned this Period						
Strike Team / Task Force / Resource Designator		LWD	Leader	Number Persons	Drop Off PT./Time	Pick Up PT./Time
TFLD O-632		05/29	ANDREW V BRANSON	1	EAST CAMP/0730	EAST CAMP/1930
TFLD O-652		05/29	LONNY HAGEDON	1	EAST CAMP/0730	EAST CAMP/1930
HEQB O-547		05/26	RODNEY G HELZER	1	EAST CAMP/0730	EAST CAMP/1930
HEQB O-665		05/29	BOB LITTLE	1	EAST CAMP/0730	EAST CAMP/1930
HEQB O-599		05/31	MARK J BASS	1	EAST CAMP/0730	EAST CAMP/1930
HEQB O-600		05/28	SHANE FEIGHTNER	1	EAST CAMP/0730	EAST CAMP/1930
HEQB O-647		05/31	BRANDON CREECH	1	EAST CAMP/0730	EAST CAMP/1930
HEQB O-687		05/30	RUDY MEDRANO	1	EAST CAMP/0730	EAST CAMP/1930
HEQB O-645		05/28	JONATHAN MCDUFFEY	1	EAST CAMP/0730	EAST CAMP/1930
HEQB O-688		05/30	GENE PHILLIPS	1	EAST CAMP/0730	EAST CAMP/1930
HEQB O-631		06/02	SCOTT BURGHARDT	1	EAST CAMP/0730	EAST CAMP/1930
STEQ O-603		05/28	JAMES LICO	1	EAST CAMP/0730	EAST CAMP/1930
DUMP TRUCK - CORNELIUS FARMS E-938		06/04		1	EAST CAMP/0730	EAST CAMP/1930
DUMP TRUCK - CORNELIUS FARMS E-937		06/04		1	EAST CAMP/0730	EAST CAMP/1930
DUMP TRUCK - CORNELIUS FARMS E-937		06/04		1	EAST CAMP/0730	EAST CAMP/1930
SOF3 O-492		05/25	TIMOTHY OLIVERIUS	1	EAST CAMP/0730	EAST CAMP/1930
SOF2 O-493		06/03	JAYMES D SMITH	1	EAST CAMP/0730	EAST CAMP/1930
8. Division/Group Communication Summary						
Function	Channel	RX Frequency N/W	RX Tone/NAC	TX Frequency N/W	TX Tone/NAC	Mode
COMMAND	2	159.1200N	NONE	151.3700N	100.0	A
AIR TO GROUND	4	169.2000N	NONE	169.2000N	NONE	A
TACTICAL	6	159.3900N	NONE	159.3900N	156.7	A
AIR TO GROUND	14	166.6750N	NONE	166.6750N	NONE	A
AIR TO GROUND	15	169.1500N	NONE	169.1500N	NONE	A
AIR GUARD	16	168.6250N	NONE	168.6250N	110.9	A
9. Prepared By (Resource Unit Leader)			Approved By (Planning Section Chief)		Date	Time
SHAUN STEWART			DUANE DURGEE		05/22/2017	2000

Division/Group Assignment List (ICS 204 WF)

1. Incident Name:			3.			
WEST MIMS			I	Branch:		Division/Group:
2. Operational Period: DAY SHIFT 0730-1930						WEST ROAD MAINTENANCE
Date/Time From: 05/23/2017 0730 TUE		Date/Time To: 05/23/2017 1930 TUE				
4. Operations Personnel						
OPERATIONS CHIEF		RICK DOLAN BUCK KLINE		THSP ROADS		
BRANCH DIRECTOR		RON GARCIA		DIVISION/GROUP SUPERVISOR		CANDICE KUTROSKY, CHRIS CHAD STOVER (T), CASEY OCONNER
SAFETY		LARRY GRUBBS CLAY STEPHENS (T)		AIR TACTICAL GROUP SUPERVISOR		MARK NUNEZ KEN MCLAUGHLIN
6. Control Operations/Work Assignments:						
Task						
<ul style="list-style-type: none"> • Assess access roads to fire perimeter; repair or maintain as necessary in accordance with priority list provided by Operations Section Chief. • Provide adequate signage for traffic safety. • Assess single lane bridges and culverts for safety and maintenance needs. 						
Purpose						
<ul style="list-style-type: none"> • To keep adequate vehicular access to the fire perimeter. 						
End State						
<ul style="list-style-type: none"> • Access roads are in a safe and travel worthy condition. • 						
7. Special Instructions:						
Check in and out with Division Supervisor when moving between divisions.						
Medical Emergency Channel: Command ETA for Ambulance to Scene: Air: 20 – 30 mins Ground: 10 - 15 mins Paved roads only. IWI – IC or approved person will use Channel 16 (Air Guard) for contact with air ambulance Air Ambulance landing zone to be determined by IWI – IC Utilize engines to provide dust abatement, as needed, prior to air ambulance landing						
For IA protocol see page 7						
8. Division/Group Communication Summary						
Function	Channel	RX Frequency N/W	RX Tone/NAC	TX Frequency N/W	TX Tone/NAC	Mode
COMMAND	2	159.1200N	NONE	151.3700N	100.0	A
AIR TO GROUND	4	169.2000N	NONE	169.2000N	NONE	A
TACTICAL	6	159.3900N	NONE	159.3900N	156.7	A
AIR TO GROUND	14	166.6750N	NONE	166.6750N	NONE	A
AIR TO GROUND	15	169.1500N	NONE	169.1500N	NONE	A
AIR GUARD	16	168.6250N	NONE	168.6250N	110.9	A
9. Prepared By (Resource Unit Leader)			Approved By (Planning Section Chief)		Date	Time
SHAUN STEWART			DUANE DURGEE		05/22/2017	2000

Division/Group Assignment List (ICS 204 WF)

1. Incident Name:			3.			
WEST MIMS			Branch:		Division/Group:	
2. Operational Period: SWING SHIFT 1400 - 0200			I, III, IV		SWING SHIFT	
Date/Time From: 05/23/2017 1400 TUE		Date/Time To: 05/24/2017 0200 WED				
4. Operations Personnel						
PLANNING OPERATIONS CHIEF		STEVE WEAVER, MARC CRAIN J.BRAND (T), M.DAVIS (T), P.DANIELS		OPERATIONS CHIEF		RICK DOLAN
BRANCH DIRECTOR		LANCE DELGADO		DIVISION/GROUP SUPERVISOR		BRYCE THOMAS (T)
SAFETY		LARRY GRUBBS CLAY STEPHENS (T)		AIR TACTICAL SUPERVISOR		MARK NUNEZ KEN MCLAUGHLIN
5. Resources Assigned this Period						
Strike Team / Task Force / Resource Designator		LWD	Leader	Number Persons	Drop Off PT./Time	Pick Up PT./Time
TFLD CRODDY O-618		05/29	KRIS CRODDY	1	DP 10/1800	DP 10/0200
TFLD (T) O-671		05/30	JAMES E BARBERI (T)	1	DP 10/1800	DP 10/0200
HEQB O-381		05/22	JOHN A KINDER	1	DP 10/1800	DP 10/0200
ENG6 - KY-KYS - 410 E-661		05/26	KEVIN RADSCHWEIT	2	DP 10/1800	DP 10/0200
ENG6 - KY-KYS - 110 E-658		05/26	DENNIS W WOOLARD	2	DP 10/1800	DP 10/0200
ENG6 - NC-NCF E-691 E-255		05/27	CODY TROUT THOMAS	3	DP 10/1800	DP 10/0200
ENGINE - T6 - 5670 E-726		05/27	BRANDON RAMIREZ	2	DP 10/1800	DP 10/0200
TFLD O-654		05/30	JOSH CANTRELL	1	DP 10/1800	DP 10/0200
ENG6 - KY-KYS - 111 E-659		05/26	STEPHEN HAMMOND	2	DP 10/1800	DP 10/0200
ENG6 - KY-KYS - 310 E-660		05/26	ADAM R MCGUIRE	2	DP 10/1800	DP 10/0200
ENG6 LNF621 E-765		05/29	TIM MCELHENY	7	DP 10/1800	DP 10/0200
ENG6 - STONEWALL FPD - ENGINE 435 E-772		05/28	KEVIN YEATTS	3	DP 10/1800	DP 10/0200
ENG6 - IN ENGINE - 5671 E-727		05/27	MIKE GRISMER	2	DP 10/1800	DP 10/0200
8. Division/Group Communication Summary						
Function	Channel	RX Frequency N/W	RX Tone/NAC	TX Frequency N/W	TX Tone/NAC	Mode
COMMAND	3	159.1200N	NONE	151.3700N	82.5	A
AIR TO GROUND	4	169.2000N	NONE	169.2000N	NONE	A
COMMAND	8	159.2700N	156.7	151.1000N	123.0	A
TACTICAL	12	159.4425N	NONE	159.4425N	NONE	A
AIR TO GROUND	14	166.6750N	NONE	166.6750N	NONE	A
AIR TO GROUND	15	169.1500N	NONE	169.1500N	NONE	A
AIR GUARD	16	168.6250N	NONE	168.6250N	110.9	A
9. Prepared By (Resource Unit Leader)			Approved By (Planning Section Chief)		Date	Time
MISSY FORDER			BRAIN ELDREDGE		05/22/2017	0828

Division/Group Assignment List (ICS 204 WF)

1. Incident Name:			3.			
WEST MIMS			Branch:		Division/Group:	
2. Operational Period: SWING SHIFT 1400 - 0200			I, III, IV		SWING SHIFT	
Date/Time From: 05/23/2017 1400 TUE		Date/Time To: 05/24/2017 0200 WED				
4. Operations Personnel						
PLANNING OPERATIONS CHIEF		STEVE WEAVER, MARC CRAIN J.BRAND (T), M.DAVIS (T), P.DANIELS		OPERATIONS CHIEF RICK DOLAN		
BRANCH DIRECTOR		LANCE DELGADO		DIVISION/GROUP SUPERVISOR BRYCE THOMAS (T)		
SAFETY		LARRY GRUBBS CLAY STEPHENS (T)		AIR TACTICAL SUPERVISOR MARK NUNEZ KEN MCLAUGHLIN		
5. Resources Assigned this Period						
Strike Team / Task Force / Resource Designator		LWD	Leader	Number Persons	Drop Off PT./Time	Pick Up PT./Time
TFLD O-520		05/25	ROBERT LAENG	1	DP 10/1800	DP 10/0200
ENG6 - UNIT #9663 - SMITHVILLE TF6 E-259		05/25	COLTON CURLES	3	DP 10/1800	DP 10/0200
ENG 6 - NMN6S - ENG 61 E-611		05/25	MICHAEL BALIZAN	3	DP 10/1800	DP 10/0200
ENG6 - NMN4S - LAS VEGAS STATE FORESTRY E-606		05/25	CODY ALCON	3	DP 10/1800	DP 10/0200
ENG6 - NMN4S - LAS VEGAS STATE FORESTRY E-605		05/25	JARROD DURAN	3	DP 10/1800	DP 10/0200
TFLD O-594		05/28	MICHAEL SMITH	1	DP 10/1800	DP 10/0200
ENG6 - FIRE MNGMT SER 351086 E-286		05/30	STEVE NAJJAR	3	DP 10/1800	DP 10/0200
ENG6 GLENWOOD 632 E-796		05/28	CODY RUSSELL	4	DP 10/1800	DP 10/0200
ENG6 - FOUNTAIN FIRE - 243 E-770		05/28	JAMES ORTA	3	DP 10/1800	DP 10/0200
TPL4 - SMR #4441 E-508		05/27	TRAVIS POLLARD	1	DP 10/1800	DP 10/0200
WTS2 -AZ-DSY #146 E-643		05/29	RANDY KENNEDY	1	DP 10/1800	DP 10/0200
ENG6 - STH ARK 112 E-773		05/29	MELISSA FRIESS	3	DP10/1800	DP 10/0200
8. Division/Group Communication Summary						
Function	Channel	RX Frequency N/W	RX Tone/NAC	TX Frequency N/W	TX Tone/NAC	Mode
COMMAND	3	159.1200N	NONE	151.3700N	82.5	A
AIR TO GROUND	4	169.2000N	NONE	169.2000N	NONE	A
COMMAND	8	159.2700N	156.7	151.1000N	123.0	A
TACTICAL	12	159.4425N	NONE	159.4425N	NONE	A
AIR TO GROUND	14	166.6750N	NONE	166.6750N	NONE	A
AIR TO GROUND	15	169.1500N	NONE	169.1500N	NONE	A
AIR GUARD	16	168.6250N	NONE	168.6250N	110.9	A
9. Prepared By (Resource Unit Leader)			Approved By (Planning Section Chief)		Date	Time
MISSY FORDER			BRAIN ELDREDGE		05/22/2017	0828

Division/Group Assignment List (ICS 204 WF)

1. Incident Name:			3.			
WEST MIMS			Branch:		Division/Group:	
2. Operational Period: SWING SHIFT 1400 - 0200			I, III, IV		SWING SHIFT	
Date/Time From: 05/23/2017 1400 TUE		Date/Time To: 05/24/2017 0200 WED				
4. Operations Personnel						
PLANNING OPERATIONS CHIEF		STEVE WEAVER, MARC CRAIN J.BRAND (T), M.DAVIS (T), P.DANIELS		OPERATIONS CHIEF		RICK DOLAN
BRANCH DIRECTOR		LANCE DELGADO		DIVISION/GROUP SUPERVISOR		BRYCE THOMAS (T)
SAFETY		LARRY GRUBBS CLAY STEPHENS (T)		AIR TACTICAL SUPERVISOR		MARK NUNEZ KEN MCLAUGHLIN
5. Resources Assigned this Period						
Strike Team / Task Force / Resource Designator		LWD	Leader	Number Persons	Drop Off PT./Time	Pick Up PT./Time
STEQ O-563		05/25	DANIEL GORE	1	DP 10/1800	DP 10/0200
TPL3 - GFC3195 E-684		05/26	MATTHEW DEAN WILSON	1	DP 10/1800	DP 10/0200
TPL4 - GFC3201 E-685		05/25	BILLY WENDELON BROWN II	1	DP 10/1800	DP 10/0200
TPL4 - GFC1029 E-686		05/25	JUSTIN KEITH JORDAN	1	DP 10/1800	DP 10/0200
EMPF E-352		05/22	KATHY NEMMERS	1	DP 10/1800	DP 10/0200
EMPF E-315.2		05/29	ALYSE GUTIERREZ	1		
EMPF E-316.2		05/29	STEVE WOLFSTICH	1	DP 10/1800	DP 10/0200
EMPF O-388		05/22	KYLE PORT	1	DP 10/1800	DP 10/0200
SOF2 O-589		05/26	GALEN YOUNG	1	DP 10/1800	DP 10/0200
8. Division/Group Communication Summary						
Function	Channel	RX Frequency N/W	RX Tone/NAC	TX Frequency N/W	TX Tone/NAC	Mode
COMMAND	3	159.1200N	NONE	151.3700N	82.5	A
AIR TO GROUND	4	169.2000N	NONE	169.2000N	NONE	A
COMMAND	8	159.2700N	156.7	151.1000N	123.0	A
TACTICAL	12	159.4425N	NONE	159.4425N	NONE	A
AIR TO GROUND	14	166.6750N	NONE	166.6750N	NONE	A
AIR TO GROUND	15	169.1500N	NONE	169.1500N	NONE	A
AIR GUARD	16	168.6250N	NONE	168.6250N	110.9	A
9. Prepared By (Resource Unit Leader)			Approved By (Planning Section Chief)		Date	Time
MISSY FORDER			BRAIN ELDREDGE		05/22/2017	0828

Division/Group Assignment List (ICS 204 WF)

1. Incident Name:			3.			
WEST MIMS			Branch:		Division/Group:	
2. Operational Period: SWING SHIFT 1400 - 0200			I, III, IV		SWING SHIFT	
Date/Time From: 05/23/2017 1400 TUE	Date/Time To: 05/24/2017 0200 WED					
4. Operations Personnel						
PLANNING OPERATIONS CHIEF		STEVE WEAVER, MARC CRAIN J.BRAND (T), M.DAVIS (T), P.DANIELS		OPERATIONS CHIEF		RICK DOLAN
BRANCH DIRECTOR		LANCE DELGADO		DIVISION/GROUP SUPERVISOR		BRYCE THOMAS (T)
SAFETY		LARRY GRUBBS CLAY STEPHENS (T)		AIR TACTICAL SUPERVISOR		MARK NUNEZ KEN MCLAUGHLIN
6. Control Operations/Work Assignments:						
Task:						
<ul style="list-style-type: none"> • Patrol and mop up as appropriate in priority Divisions C, O, A, Y, and Z. • Monitor fire activity and take appropriate action to reduce hot spots and maintain containment. • Ensure structure protection measures are in place. • Respond to any new starts within Refuge vicinity. Follow IA protocol. 						
Purpose:						
<ul style="list-style-type: none"> • Keep fire within current containment lines. • Provide transitional support to day shift operations. 						
End State:						
<ul style="list-style-type: none"> • Confine fire consistent with protecting structures, private timberlands and other resource values at risk. 						
7. Special Instructions:						
<p>Medical Emergency Channel: Command ETA for Ambulance to Scene: Air: 20 – 30 mins Ground: 10 - 15 mins Paved roads only. IWI – IC or approved person will use Channel 16 (Air Guard) for contact with air ambulance Air Ambulance landing zone to be determined by IWI – IC Utilize engines to provide dust abatement, as needed, prior to air ambulance landing</p> <p>Branch 1 AMB (D/S) Clinch Co. EMS 470-532-8806 Branch 3 AMB (D/S) Golden Isles 912-602-9224 Swing Shift Div. C Alyse Guterrez EMPF 602-885-3115 Swing Shift Div. A/Y Stephen Wolfstich EMPF 520-508-9807 Swing Shift Div O/Z Kyle Port EMPF 602-910-6788</p>						
8. Division/Group Communication Summary						
Function	Channel	RX Frequency N/W	RX Tone/NAC	TX Frequency N/W	TX Tone/NAC	Mode
COMMAND	3	159.1200N	NONE	151.3700N	82.5	A
AIR TO GROUND	4	169.2000N	NONE	169.2000N	NONE	A
COMMAND	8	159.2700N	156.7	151.1000N	123.0	A
TACTICAL	12	159.4425N	NONE	159.4425N	NONE	A
AIR TO GROUND	14	166.6750N	NONE	166.6750N	NONE	A
AIR TO GROUND	15	169.1500N	NONE	169.1500N	NONE	A
AIR GUARD	16	168.6250N	NONE	168.6250N	110.9	A
9. Prepared By (Resource Unit Leader)			Approved By (Planning Section Chief)		Date	Time
MISSY FORDER			BRAIN ELDREDGE		05/22/2017	0828

Division/Group Assignment List (ICS 204 WF)

1. Incident Name:			3.			
WEST MIMS			III		INITIAL ATTACK	
2. Operational Period: DAY SHIFT 0730-1930						
Date/Time From: 05/23/2017 0730 TUE		Date/Time To: 05/23/2017 1930 TUE				
4. Operations Personnel						
PLANNING OPERATIONS CHIEF		TRENT INGRAM PHIL DANIELS (T)		OPERATIONS CHIEF		RICK DOLAN FRED BOEHM
BRANCH DIRECTOR		RON SMITH		DIVISION/GROUP SUPERVISOR		GREGG BUCKALEW ARTURO GASDIK (T)
SAFETY		LARRY CONNELL		AIR TACTICAL GROUP SUPERVISOR		MARK NUNEZ KEN MCLAUGHLIN
5. Resources Assigned this Period						
Strike Team / Task Force / Resource Designator		LWD	Leader	Number Persons	Drop Off PT./Time	Pick Up PT./Time
ENG6 - OK-4261 E-36 IA		05/22	B. HORNSBY	2	EAST CAMP/0730	EAST CAMP/1930
ENG6 - SC-CRR-E262 E-237 IA		05/22	ROBERT ASKINS	2	EAST CAMP/0730	EAST CAMP/1930
TPL2- D-223 E-240		05/24	UNSTAFFED	1	EAST CAMP/0730	EAST CAMP/1930
TPL2 DOZER - T2 - 750J PX3 E-131		05/24	ERIC MEEKINS	1	EAST CAMP/0730	EAST CAMP/1930
TPL2 OKE 56 - TPL E-35 IA		05/24	ERIC MEEKINS	1	EAST CAMP/0730	EAST CAMP/1930
DOZ2 OKE-54 E-34 IA		05/30	GEORGE PELT	1	EAST CAMP/0730	EAST CAMP/1930
DOZ2 - GA-SAR-922 IA E-122		05/30	C. JOHNSON	1	EAST CAMP/0730	EAST CAMP/1930
ICT4		05/30	CORY BRYANT	1	EAST CAMP/0730	EAST CAMP/1930
SOF2 O-539 575-574-2064		05/27	PAUL E BOUCHER	1	EAST CAMP/0730	EAST CAMP/1930
8. Division/Group Communication Summary						
Function	Channel	RX Frequency N/W	RX Tone/NAC	TX Frequency N/W	TX Tone/NAC	Mode
COMMAND	3	159.1200N	NONE	151.3700N	82.5	A
AIR TO GROUND	4	169.2000N	NONE	169.2000N	NONE	A
TACTICAL	12	159.4425N	NONE	159.4425N	NONE	A
AIR TO GROUND	14	166.6750N	NONE	166.6750N	NONE	A
AIR TO GROUND	15	169.1500N	NONE	169.1500N	NONE	A
AIR GUARD	16	168.6250N	NONE	168.6250N	110.9	A
9. Prepared By (Resource Unit Leader)			Approved By (Planning Section Chief)		Date	Time
SHAUN STEWART			DUANE DURGEE		05/22/2017	2000

Division/Group Assignment List (ICS 204 WF)

1. Incident Name:			3.			
WEST MIMS			III	INITIAL ATTACK		
2. Operational Period: DAY SHIFT 0730-1930						
Date/Time From: 05/23/2017 0730 TUE		Date/Time To: 05/23/2017 1930 TUE				
4. Operations Personnel						
PLANNING OPERATIONS CHIEF		TRENT INGRAM PHIL DANIELS (T)		OPERATIONS CHIEF		RICK DOLAN FRED BOEHM
BRANCH DIRECTOR		RON SMITH		DIVISION/GROUP SUPERVISOR		GREGG BUCKALEW ARTURO GASDIK (T)
SAFETY		LARRY CONNELL		AIR TACTICAL GROUP SUPERVISOR		MARK NUNEZ KEN MCLAUGHLIN
6. Control Operations/Work Assignments:						
Task						
<ul style="list-style-type: none"> • Respond to any new starts as requested by OKR duty officer. • Coordinate initial attack action with assigned aviation and/or ground assets. 						
Purpose						
<ul style="list-style-type: none"> • Ensure timely response on any initial attack within OKR jurisdictional boundaries and vicinity. 						
End State						
<ul style="list-style-type: none"> • Fire activity has been detected and appropriate action has been initiated. 						
7. Special Instructions:						
<p>Contact Resource Advisors for any cultural or archeological needs, as well as, RCW concerns. Ensure LCES is in place before operations begin and stay hydrated. Drive defensively and with lights on at all times. Communications: Use the tactical channel for the division you are in. Staging on east side at Refuge office.</p> <p>Medical Emergency Channel: Command ETA for Ambulance to Scene: Air: 20 – 30 mins Ground: 10 - 15 mins Paved roads only. IWI – IC or approved person will use Channel 16 (Air Guard) for contact with air ambulance Air Ambulance landing zone to be determined by IWI – IC Utilize engines to provide dust abatement, as needed, prior to air ambulance landing</p> <p>For IA protocol see page 7</p>						
8. Division/Group Communication Summary						
Function	Channel	RX Frequency N/W	RX Tone/NAC	TX Frequency N/W	TX Tone/NAC	Mode
COMMAND	3	159.1200N	NONE	151.3700N	82.5	A
AIR TO GROUND	4	169.2000N	NONE	169.2000N	NONE	A
TACTICAL	12	159.4425N	NONE	159.4425N	NONE	A
AIR TO GROUND	14	166.6750N	NONE	166.6750N	NONE	A
AIR TO GROUND	15	169.1500N	NONE	169.1500N	NONE	A
AIR GUARD	16	168.6250N	NONE	168.6250N	110.9	A
9. Prepared By (Resource Unit Leader)			Approved By (Planning Section Chief)		Date	Time
SHAUN STEWART			DUANE DURGEE		05/22/2017	2000

Division/Group Assignment List (ICS 204 WF)

1. Incident Name:				3.			
WEST MIMS				III		M	
2. Operational Period: DAY SHIFT 0730-1930							
Date/Time From: 05/23/2017 0730 TUE		Date/Time To: 05/23/2017 1930 TUE					
4. Operations Personnel							
PLANNING OPERATIONS CHIEF		TRENT INGRAM PHIL DANIELS (T)		OPERATIONS CHIEF		RICK DOLAN EAST - FRED BOEHM	
BRANCH DIRECTOR		RON SMITH		DIVISION/GROUP SUPERVISOR		DAVID SMITH JASON LAGO (T)	
SAFETY		LARRY CONNELL		AIR TACTICAL GROUP SUPERVISOR		MARK NUNEZ, KEN MCLAUGHLIN	
5. Resources Assigned this Period							
Strike Team / Task Force / Resource Designator		LWD	Leader	Number Persons	Drop Off PT./Time	Pick Up PT./Time	
ENG6 - ATTACK ONE FIRE MGMT SERV E-257		05/28	JOHN HOELLERICH	2	EAST CAMP/0730	EAST CAMP/1930	
ENG6 - AR-OZF - SYL - E-671 E-283		05/24	LARRY VANDIVER	3	EAST CAMP/0730	EAST CAMP/1930	
ENG6 - NAX - BRUSH 7-4 E-848		05/31	MAX BORINO	3	EAST CAMP/0730	EAST CAMP/1930	
ENG6 - SCHOLL FIRE & FUELS MANAGEMENT, INC. - 2 E-263		06/02	ROBERT MAHARREY	3	EAST CAMP/0730	EAST CAMP/1930	
TPLW2 - GFC1417 E-665		05/24	ERIC SMITH	1	EAST CAMP/0730	EAST CAMP/1930	
TPL3 - TRACTOR - GFC4202120 E-666		05/25	STEVEN JOHNSON	1	EAST CAMP/0730	EAST CAMP/1930	
TPL3 - TRACTOR PLOW - T3 - GFC2623 E-667		05/25	DAVIS STEEDLEY	1	EAST CAMP/0730	EAST CAMP/1930	
WTS2 WET 'N RED, LLC - 58592 E-365		05/23	ALLEN WEST	2	EAST CAMP/0730	EAST CAMP/1930	
HEQB O-601		05/27	JASON B FOREMAN	1	EAST CAMP/0730	EAST CAMP/1930	
STEQ O-512		05/25	JASON HARRIS	1	EAST CAMP/0730	EAST CAMP/1930	
EMPF O-560 928-235-7059		05/26	LIONEL VAN GURP	1	EAST CAMP/0730	EAST CAMP/1930	
SOF2 O-587		05/29	RONALD BERTSCH	1	EAST CAMP/0730	EAST CAMP/1930	
8. Division/Group Communication Summary							
Function	Channel	RX Frequency N/W	RX Tone/NAC	TX Frequency N/W	TX Tone/NAC	Mode	
COMMAND	3	159.1200N	NONE	151.3700N	82.5	A	
AIR TO GROUND	4	169.2000N	NONE	169.2000N	NONE	A	
TACTICAL	9	159.2850N	NONE	159.2850N	156.7	A	
AIR TO GROUND	14	166.6750N	NONE	166.6750N	NONE	A	
AIR TO GROUND	15	169.1500N	NONE	169.1500N	NONE	A	
AIR GUARD	16	168.6250N	NONE	168.6250N	110.9	A	
9. Prepared By (Resource Unit Leader)			Approved By (Planning Section Chief)			Date	Time
SHAUN STEWART			DUANE DURGEE			05/22/2017	2000

Division/Group Assignment List (ICS 204 WF)

1. Incident Name:			3.			
WEST MIMS			III		M	
2. Operational Period: DAY SHIFT 0730-1930						
Date/Time From: 05/23/2017 0730 TUE		Date/Time To: 05/23/2017 1930 TUE				
4. Operations Personnel						
PLANNING OPERATIONS CHIEF		TRENT INGRAM PHIL DANIELS (T)		OPERATIONS CHIEF		RICK DOLAN EAST - FRED BOEHM
BRANCH DIRECTOR		RON SMITH		DIVISION/GROUP SUPERVISOR		DAVID SMITH JASON LAGO (T)
SAFETY		LARRY CONNELL		AIR TACTICAL GROUP SUPERVISOR		MARK NUNEZ, KEN MCLAUGHLIN
6. Control Operations/Work Assignments:						
Task						
<ul style="list-style-type: none"> • Prepare for strategic firing of control lines. • Respond to any new starts within the division. • Patrol and mop up fuels appropriate to fuel type and anticipated weather and fire behavior. 						
Purpose						
<ul style="list-style-type: none"> • Keep fire west of Swamp Edge Break. 						
End State						
<ul style="list-style-type: none"> • Fire is contained by adequate control line to reduce threat to escape; minimizing damage to private timberlands, private lands, and other resource values at risk. 						
7. Special Instructions:						
Ensure LCES is in place before operations begin and stay hydrated. Drive defensively and with lights on at all times. Identify escape routes.						
For IA protocol see page 7						
Medical Emergency Channel: Command ETA for Ambulance to Scene: Air: 20 – 30 mins Ground: 10 - 15 mins Paved roads only. IWI – IC or approved person will use Channel 16 (Air Guard) for contact with air ambulance Air Ambulance landing zone to be determined by IWI – IC Utilize engines to provide dust abatement, as needed, prior to air ambulance landing						
8. Division/Group Communication Summary						
Function	Channel	RX Frequency N/W	RX Tone/NAC	TX Frequency N/W	TX Tone/NAC	Mode
COMMAND	3	159.1200N	NONE	151.3700N	82.5	A
AIR TO GROUND	4	169.2000N	NONE	169.2000N	NONE	A
TACTICAL	9	159.2850N	NONE	159.2850N	156.7	A
AIR TO GROUND	14	166.6750N	NONE	166.6750N	NONE	A
AIR TO GROUND	15	169.1500N	NONE	169.1500N	NONE	A
AIR GUARD	16	168.6250N	NONE	168.6250N	110.9	A
9. Prepared By (Resource Unit Leader)			Approved By (Planning Section Chief)		Date	Time
SHAUN STEWART			DUANE DURGEE		05/22/2017	2000

Division/Group Assignment List (ICS 204 WF)

1. Incident Name:			3.			
WEST MIMS			III	N		
2. Operational Period: DAY SHIFT 0730-1930						
Date/Time From: 05/23/2017 0730	TUE	Date/Time To: 05/23/2017 1930	TUE			
4. Operations Personnel						
PLANNING OPERATIONS CHIEF		TRENT INGRAM PHIL DANIELS (T)	OPERATIONS CHIEF		RICK DOLAN FRED BOEHM	
BRANCH DIRECTOR		RON SMITH	DIVISION/GROUP SUPERVISOR		KAREN SCHOLL CHRIS RANKIN (T)	
SAFETY		LARRY CONNELL	AIR TACTICAL GROUP SUPERVISOR		MARK NUNEZ, KEN MCLAUGHLIN	
6. Control Operations/Work Assignments:						
Task						
<ul style="list-style-type: none"> • Respond to any new starts within the division. • Patrol and mop up fuels appropriate to fuel type and anticipated weather and fire behavior. 						
Purpose						
<ul style="list-style-type: none"> • Keep fire west of Swamp Edge Break and south of Crawford Road. 						
End State						
<ul style="list-style-type: none"> • Fire is contained by adequate control line to reduce threat to escape; minimizing damage to private timberlands, private lands, and other resource values at risk. 						
7. Special Instructions:						
Ensure LCES is in place before operations begin and stay hydrated. Drive defensively and with lights on at all times. Identify escape routes.						
For IA protocol see page 7						
Medical Emergency Channel: Command ETA for Ambulance to Scene: Air: 20 – 30 mins Ground: 10 - 15 mins Paved roads only. IWI – IC or approved person will use Channel 16 (Air Guard) for contact with air ambulance Air Ambulance landing zone to be determined by IWI – IC Utilize engines to provide dust abatement, as needed, prior to air ambulance landing						
8. Division/Group Communication Summary						
Function	Channel	RX Frequency N/W	RX Tone/NAC	TX Frequency N/W	TX Tone/NAC	Mode
COMMAND	3	159.1200N	NONE	151.3700N	82.5	A
AIR TO GROUND	4	169.2000N	NONE	169.2000N	NONE	A
TACTICAL	10	168.3500N	NONE	168.3500N	NONE	A
AIR TO GROUND	14	166.6750N	NONE	166.6750N	NONE	A
AIR TO GROUND	15	169.1500N	NONE	169.1500N	NONE	A
AIR GUARD	16	168.6250N	NONE	168.6250N	110.9	A
9. Prepared By (Resource Unit Leader)			Approved By (Planning Section Chief)		Date	Time
SHAUN STEWART			DUANE DURGEE		05/22/2017	2000

Division/Group Assignment List (ICS 204 WF)

1. Incident Name:				3.					
WEST MIMS				III		O			
2. Operational Period: DAY SHIFT 0730-1930									
Date/Time From: 05/23/2017 0730 TUE		Date/Time To: 05/23/2017 1930 TUE							
4. Operations Personnel									
PLANNING OPERATIONS CHIEF		TRENT INGRAM PHIL DANIELS (T)		OPERATIONS CHIEF		RICK DOLAN EAST - FRED BOEHM			
BRANCH DIRECTOR		MARC CRAIN CHRIS LUNDGREN (T)		DIVISION/GROUP SUPERVISOR		SHAWN ALEXANDER, ROB THORPE MICHAEL GUE (T)			
SAFETY		LARRY CONNELL		AIR TACTICAL GROUP SUPERVISOR		MARK NUNEZ, KEN MCLAUGHLIN			
5. Resources Assigned this Period									
Strike Team / Task Force / Resource Designator		LWD	Leader	Number Persons	Drop Off PT./Time	Pick Up PT./Time			
HC2I - NMCIF - ACOMA #1 C-12		05/25	ANDREW M HENRY	21	EAST CAMP/0730	EAST CAMP/1930			
MODULE - SUPPRESSION - BIA SUPPRESSION MODULE #2 O-522		05/25	SCOTTY KOPEPASSAH	11	EAST CAMP/0730	EAST CAMP/1930			
ENG6 - 161 E-656		05/26	TOD BENNETT	3	EAST CAMP/0730	EAST CAMP/1930			
ENG6 - 2661 - BRAZORIA REFUGE E-657		05/27	NORTHSTONE	2	EAST CAMP/0730	EAST CAMP/1930			
ENG6 - 611 E-663		05/29	JORDAN BLACK	3	EAST CAMP/0730	EAST CAMP/1930			
ENG6 - NMLNF621 - SACRAMENTO RD E-765		05/29	TIM MCELHNEY	4	EAST CAMP/0730	EAST CAMP/1930			
ENG6 J3 CONTRACTING - 07 - VIN# UNLISTED E-732		05/30	ANTHONY PARLIC	3	EAST CAMP/0730	EAST CAMP/1930			
ENG6 - BOULDER COUNTY SHERIFF - ENGINE 6531 E-847		05/30	KENYON SHEPHARD	6	EAST CAMP/0730	EAST CAMP/1930			
ENG6 J3 CONTRACTING - 12 - VIN# 002974 E-733		05/30	LANCE WOLLEBAEK	3	EAST CAMP/0730	EAST CAMP/1930			
ENG6 - FWS - 462 E-261		06/04	CHRISTOPHER NOTHSTINE	3	EAST CAMP/0730	EAST CAMP/1930			
WTS2 - BONNELL SAND & GRAVEL I E-366		05/23	JOEL BONNELL	1	EAST CAMP/0730	EAST CAMP/1930			
TFLD O-635		05/29	BRIAN ANDERSON	1	EAST CAMP/0730	EAST CAMP/1930			
TFLD O-592		05/27	DALE E MIDDLETON	1	EAST CAMP/0730	EAST CAMP/1930			
8. Division/Group Communication Summary									
Function	Channel	RX Frequency N/W	RX Tone/NAC	TX Frequency N/W	TX Tone/NAC	Mode			
COMMAND	3	159.1200N	NONE	151.3700N	82.5	A			
AIR TO GROUND	4	169.2000N	NONE	169.2000N	NONE	A			
TACTICAL	11	163.7125N	NONE	163.7125N	NONE	A			
AIR TO GROUND	14	166.6750N	NONE	166.6750N	NONE	A			
AIR TO GROUND	15	169.1500N	NONE	169.1500N	NONE	A			
AIR GUARD	16	168.6250N	NONE	168.6250N	110.9	A			
9. Prepared By (Resource Unit Leader)			Approved By (Planning Section Chief)			Date		Time	
SHAUN STEWART			DUANE DURGEE			05/22/2017		2000	

Division/Group Assignment List (ICS 204 WF)

1. Incident Name:				3.			
WEST MIMS				III		O	
2. Operational Period: DAY SHIFT 0730-1930							
Date/Time From: 05/23/2017 0730 TUE		Date/Time To: 05/23/2017 1930 TUE					
4. Operations Personnel							
PLANNING OPERATIONS CHIEF		TRENT INGRAM PHIL DANIELS (T)		OPERATIONS CHIEF		RICK DOLAN EAST - FRED BOEHM	
BRANCH DIRECTOR		MARC CRAIN CHRIS LUNDGREN (T)		DIVISION/GROUP SUPERVISOR		SHAWN ALEXANDER, ROB THORPE MICHAEL GUE (T)	
SAFETY		LARRY CONNELL		AIR TACTICAL GROUP SUPERVISOR		MARK NUNEZ, KEN MCLAUGHLIN	
5. Resources Assigned this Period							
Strike Team / Task Force / Resource Designator		LWD	Leader	Number Persons	Drop Off PT./Time	Pick Up PT./Time	
STEQ O-679		06/02	DAVID BROWN	1	EAST CAMP/0730	EAST CAMP/1930	
STEQ (T) O-573		05/27	OLIVER M WAHLQUIST	1	EAST CAMP/0730	EAST CAMP/1930	
TPL3 - TRACTOR PLOW - T3 - GFC3266 E-370		06/01	SPENCER WOOD	2	EAST CAMP/0730	EAST CAMP/1930	
TPL2 - TRACTOR PLOW - T2 - GFC3307 E-371		06/02	CHRIS W MULLIS	2	EAST CAMP/0730	EAST CAMP/1930	
TPL2 - TRACTOR PLOW - T2 - GFC3295 E-372		06/02	BRIAN THOMPSON	2	EAST CAMP/0730	EAST CAMP/1930	
EMPF W/UTV O-346 229--561-4224		05/25	DEAN CARPENTER	1	EAST CAMP/0730	EAST CAMP/1930	
SOF2 O-195 520-591-2434		05/25	JOHN MCGEE	1	EAST CAMP/0730	EAST CAMP/1930	
6. Control Operations/Work Assignments:							
8. Division/Group Communication Summary							
Function	Channel	RX Frequency N/W	RX Tone/NAC	TX Frequency N/W	TX Tone/NAC	Mode	
COMMAND	3	159.1200N	NONE	151.3700N	82.5	A	
AIR TO GROUND	4	169.2000N	NONE	169.2000N	NONE	A	
TACTICAL	11	163.7125N	NONE	163.7125N	NONE	A	
AIR TO GROUND	14	166.6750N	NONE	166.6750N	NONE	A	
AIR TO GROUND	15	169.1500N	NONE	169.1500N	NONE	A	
AIR GUARD	16	168.6250N	NONE	168.6250N	110.9	A	
9. Prepared By (Resource Unit Leader)			Approved By (Planning Section Chief)			Date	Time
SHAUN STEWART			DUANE DURGEE			05/22/2017	2000

Division/Group Assignment List (ICS 204 WF)

1. Incident Name:			3.			
WEST MIMS			Branch:		Division/Group:	
2. Operational Period: DAY SHIFT 0730-1930			III		O	
Date/Time From: 05/23/2017 0730 TUE		Date/Time To: 05/23/2017 1930 TUE				
4. Operations Personnel						
PLANNING OPERATIONS CHIEF		TRENT INGRAM PHIL DANIELS (T)		OPERATIONS CHIEF		
BRANCH DIRECTOR		MARC CRAIN CHRIS LUNDGREN (T)		DIVISION/GROUP SUPERVISOR		
SAFETY		LARRY CONNELL		AIR TACTICAL GROUP SUPERVISOR		
				RICK DOLAN EAST - FRED BOEHM		
				SHAWN ALEXANDER, ROB THORPE MICHAEL GUE (T)		
				MARK NUNEZ, KEN MCLAUGHLIN		
6. Control Operations/Work Assignments:						
Task						
<ul style="list-style-type: none"> • Respond to any new starts within the division. • Patrol and mop up fuels appropriate to fuel type and anticipated weather and fire behavior. • 						
Purpose						
<ul style="list-style-type: none"> • Keep fire within established fire containment lines. • 						
End State						
<ul style="list-style-type: none"> • Fire is contained by adequate control line to reduce threat to escape; minimizing damage to private timberlands, private lands, and other resource values at risk. 						
7. Special Instructions:						
Ensure LCES are in place before operations begin and stay hydrated. Drive defensively and with lights on at all times. Identify escape routes.						
For IA protocol see page 7						
Medical Emergency Channel: Command ETA for Ambulance to Scene: Air: 20 – 30 mins Ground: 10 - 15 mins Paved roads only. IWI – IC or approved person will use Channel 16 (Air Guard) for contact with air ambulance Air Ambulance landing zone to be determined by IWI – IC Utilize engines to provide dust abatement, as needed, prior to air ambulance landing						
8. Division/Group Communication Summary						
Function	Channel	RX Frequency N/W	RX Tone/NAC	TX Frequency N/W	TX Tone/NAC	Mode
COMMAND	3	159.1200N	NONE	151.3700N	82.5	A
AIR TO GROUND	4	169.2000N	NONE	169.2000N	NONE	A
TACTICAL	11	163.7125N	NONE	163.7125N	NONE	A
AIR TO GROUND	14	166.6750N	NONE	166.6750N	NONE	A
AIR TO GROUND	15	169.1500N	NONE	169.1500N	NONE	A
AIR GUARD	16	168.6250N	NONE	168.6250N	110.9	A
9. Prepared By (Resource Unit Leader)			Approved By (Planning Section Chief)		Date	Time
SHAUN STEWART			DUANE DURGEE		05/22/2017	2000

Division/Group Assignment List (ICS 204 WF)

1. Incident Name:			3.			
WEST MIMS			III		STAGING	
2. Operational Period: DAY SHIFT 0730-1930						
Date/Time From: 05/23/2017 0730 TUE		Date/Time To: 05/23/2017 1930 TUE				
4. Operations Personnel						
PLANNING OPERATIONS CHIEF		TRENT INGRAM PHIL DANIELS (T)		OPERATIONS CHIEF		RICK DOLAN FRED BOEHM
BRANCH DIRECTOR		RON SMITH		STAGING AREA MANAGER		ADAM DUMMER
SAFETY		LARRY CONNELL		AIR TACTICAL GROUP SUPERVISOR		MARK NUNEZ, KEN MCLAUGHLIN
5. Resources Assigned this Period						
Strike Team / Task Force / Resource Designator		LWD	Leader	Number Persons	Drop Off PT./Time	Pick Up PT./Time
ENG6 - BUSH FIRE - VIN# 260743 E-541		05/24	ROBBIE ROBERTSON	2	EAST CAMP/0730	EAST CAMP/1930
ENG6 E-651		05/24	KELLY TOWE	3	EAST CAMP/0730	EAST CAMP/1930
ENG6 - NC-NCF E-631 E-534		05/23	JAMES CHERRY	3		
ENG7 - GFC4202610 E-711		05/25			EAST CAMP/0730	EAST CAMP/1930
EMPF E-376		05/24	PAUL PUGH	1		
SOF2 O-539		05/27	PAUL E BOUCHER	1	EAST CAMP/0730	EAST CAMP/1930
8. Division/Group Communication Summary						
Function	Channel	RX Frequency N/W	RX Tone/NAC	TX Frequency N/W	TX Tone/NAC	Mode
COMMAND	3	159.1200N	NONE	151.3700N	82.5	A
AIR TO GROUND	4	169.2000N	NONE	169.2000N	NONE	A
TACTICAL	10	168.3500N	NONE	168.3500N	NONE	A
AIR TO GROUND	14	166.6750N	NONE	166.6750N	NONE	A
AIR TO GROUND	15	169.1500N	NONE	169.1500N	NONE	A
AIR GUARD	16	168.6250N	NONE	168.6250N	110.9	A
9. Prepared By (Resource Unit Leader)			Approved By (Planning Section Chief)		Date	Time
SHAUN STEWART			DUANE DURGEE		05/22/2017	2000

Division/Group Assignment List (ICS 204 WF)

1. Incident Name:			3.			
WEST MIMS			III	STAGING		
2. Operational Period: DAY SHIFT 0730-1930						
Date/Time From: 05/23/2017 0730 TUE		Date/Time To: 05/23/2017 1930 TUE				
4. Operations Personnel						
PLANNING OPERATIONS CHIEF		TRENT INGRAM PHIL DANIELS (T)		OPERATIONS CHIEF		
BRANCH DIRECTOR		RON SMITH		STAGING AREA MANAGER		
SAFETY		LARRY CONNELL		AIR TACTICAL GROUP SUPERVISOR		
RICK DOLAN FRED BOEHM		ADAM DUMMER		MARK NUNEZ, KEN MCLAUGHLIN		
6. Control Operations/Work Assignments:						
Task						
<ul style="list-style-type: none"> • Assess availability of surplus resources for reassignment. • Advise Planning Operations which resources are surplus and available to reallocate within incident. 						
Purpose						
<ul style="list-style-type: none"> • To provide logistical support for resources pending reassignment or demobilization. 						
End State						
<ul style="list-style-type: none"> • A pool of resources are readily available for reassignment or demobilization. 						
7. Special Instructions:						
<p>For IA protocol see page 7</p> <p>Staging Area Manager Phone Numbers:</p> <p>ADAM DUMMER 831-238-0991 CHRISTOPHER RUDD 541-660-0634</p> <p>Medical Emergency Channel: Command ETA for Ambulance to Scene: Air: 20 – 30 mins Ground: 10 - 15 mins Paved roads only. IWI – IC or approved person will use Channel 16 (Air Guard) for contact with air ambulance Air Ambulance landing zone to be determined by IWI – IC Utilize engines to provide dust abatement, as needed, prior to air ambulance landing</p>						
8. Division/Group Communication Summary						
Function	Channel	RX Frequency N/W	RX Tone/NAC	TX Frequency N/W	TX Tone/NAC	Mode
COMMAND	3	159.1200N	NONE	151.3700N	82.5	A
AIR TO GROUND	4	169.2000N	NONE	169.2000N	NONE	A
TACTICAL	10	168.3500N	NONE	168.3500N	NONE	A
AIR TO GROUND	14	166.6750N	NONE	166.6750N	NONE	A
AIR TO GROUND	15	169.1500N	NONE	169.1500N	NONE	A
AIR GUARD	16	168.6250N	NONE	168.6250N	110.9	A
9. Prepared By (Resource Unit Leader)			Approved By (Planning Section Chief)		Date	Time
SHAUN STEWART			DUANE DURGEE		05/22/2017	2000

Division/Group Assignment List (ICS 204 WF)

1. Incident Name:			3.			
WEST MIMS			Branch:		Division/Group:	
2. Operational Period: DAY SHIFT 0730-1930			IV		A	
Date/Time From: 05/23/2017 0730 TUE		Date/Time To: 05/23/2017 1930 TUE				
4. Operations Personnel						
PLANNING OPERATIONS CHIEF		TRENT INGRAM PHIL DANIELS (T)		OPERATIONS CHIEF		RICK DOLAN FRED BOEHM
BRANCH DIRECTOR		STEVE MILLER		DIVISION/GROUP SUPERVISOR		TOM TIPTON, JASON FORTHOFFER JEFF BOSTWICK (T)
SAFETY		LARRY CONNELL		AIR TACTICAL GROUP SUPERVISOR		MARK NUNEZ, KEN MCLAUGHLIN
5. Resources Assigned this Period						
Strike Team / Task Force / Resource Designator		LWD	Leader	Number Persons	Drop Off PT./Time	Pick Up PT./Time
ENG3 - WEST METRO - BRUSH 39 E-277		05/23	BRADLEY NELSON	4	EAST CAMP/0730	EAST CAMP/1930
ENG3 - DEER MOUNTAIN FPD - ENGINE 12 E-280		06/05	JOSEPH CRAIG WATTS	3	EAST CAMP/0730	EAST CAMP/1930
ENG6 - KNF - FSD3 - 631 E-285		05/31	ADAUTO, JULIAN	5	EAST CAMP/0730	EAST CAMP/1930
ENG6 - TGF FORESTRY AND FIRE, INC. - C94783 - E E-287		05/23	JASON SARTIN	3	EAST CAMP/0730	EAST CAMP/1930
ENG6 - WILDLANDS FIRE SERVICE INC - C93328 - 5 E-539		05/24	DAVID HOGREFE	3	EAST CAMP/0730	EAST CAMP/1930
ENG6 - GFC4201278 E-706		05/25	DOUG ANDREWS	3	EAST CAMP/0730	EAST CAMP/1930
ENG6 - 6171 E-77		06/05	DAVID GIBSON	3	EAST CAMP/0730	EAST CAMP/1930
ENG6 - NC-NCS - PK-7795 E-533		05/24	MICHAEL BLAKE	2	EAST CAMP/0730	EAST CAMP/1930
ENG6-E631 E-56		06/05	DARRYL BRIGHTWELL	3	EAST CAMP/0730	EAST CAMP/1930
ENG6 J3 CONT 07 E-731		05/30	CURTIC PUMPHREY	3	EAST CAMP/0730	EAST CAMP/1930
WTS2 - STRICKLANDS E-272		05/30	LUCIUS CORBITT	1	EAST CAMP/0730	EAST CAMP/1930
TFLD E-56.10		05/24	DANIEL CASTO	1	EAST CAMP/0730	EAST CAMP/1930
TFLD O-606		05/28	DAREK PEPPE	1	EAST CAMP/0730	EAST CAMP/1930
EMPF E-376		05/24	PAUL PUGH	1		
SOF2 O-540 229-561-4259		05/28	JACK BENZILIO	1	EAST CAMP/0730	EAST CAMP/1930
8. Division/Group Communication Summary						
Function	Channel	RX Frequency N/W	RX Tone/NAC	TX Frequency N/W	TX Tone/NAC	Mode
AIR TO GROUND	4	169.2000N	NONE	169.2000N	NONE	A
COMMAND	8	159.2700N	156.7	151.1000N	123.0	A
TACTICAL	12	159.4425N	NONE	159.4425N	NONE	A
AIR TO GROUND	14	166.6750N	NONE	166.6750N	NONE	A
AIR TO GROUND	15	169.1500N	NONE	169.1500N	NONE	A
AIR GUARD	16	168.6250N	NONE	168.6250N	110.9	A
9. Prepared By (Resource Unit Leader)			Approved By (Planning Section Chief)		Date	Time
SHAUN STEWART			DUANE DURGEE		05/22/2017	2000

Division/Group Assignment List (ICS 204 WF)

1. Incident Name:			3.			
WEST MIMS			IV		A	
2. Operational Period: DAY SHIFT 0730-1930						
Date/Time From: 05/23/2017 0730 TUE		Date/Time To: 05/23/2017 1930 TUE				
4. Operations Personnel						
PLANNING OPERATIONS CHIEF		TRENT INGRAM PHIL DANIELS (T)		OPERATIONS CHIEF		RICK DOLAN FRED BOEHM
BRANCH DIRECTOR		STEVE MILLER		DIVISION/GROUP SUPERVISOR		TOM TIPTON, JASON FORTHOFFER JEFF BOSTWICK (T)
SAFETY		LARRY CONNELL		AIR TACTICAL GROUP SUPERVISOR		MARK NUNEZ, KEN MCLAUGHLIN
6. Control Operations/Work Assignments:						
Task						
<ul style="list-style-type: none"> • Patrol and mop up fuels appropriate to fuel type and anticipated weather and fire behavior. • Respond to any new starts within the division. 						
Purpose						
<ul style="list-style-type: none"> • Keep fire north of FL 2. 						
End State						
<ul style="list-style-type: none"> • Fire is contained by adequate control line to reduce threat to escape; minimizing damage to private timberlands, private lands, and other resource values at risk. 						
7. Special Instructions:						
<p>Ensure LCES is in place before operations begin and stay hydrated. Drive defensively and with lights on at all times. Identify escape routes. Bridge near DP 9 restricted to pickups - No engines. Bridge on swamp perimeter road just east of first Branch has steep drop offs - 1 lane travel - watch for barricades.</p> <p>For IA protocol see page 7</p> <p>Medical Emergency Channel: Command ETA for Ambulance to Scene: Air: 20 – 30 mins Ground: 10 - 15 mins Paved roads only. IWI – IC or approved person will use Channel 16 (Air Guard) for contact with air ambulance Air Ambulance landing zone to be determined by IWI – IC Utilize engines to provide dust abatement, as needed, prior to air ambulance landing</p>						
8. Division/Group Communication Summary						
Function	Channel	RX Frequency N/W	RX Tone/NAC	TX Frequency N/W	TX Tone/NAC	Mode
AIR TO GROUND	4	169.2000N	NONE	169.2000N	NONE	A
COMMAND	8	159.2700N	156.7	151.1000N	123.0	A
TACTICAL	12	159.4425N	NONE	159.4425N	NONE	A
AIR TO GROUND	14	166.6750N	NONE	166.6750N	NONE	A
AIR TO GROUND	15	169.1500N	NONE	169.1500N	NONE	A
AIR GUARD	16	168.6250N	NONE	168.6250N	110.9	A
9. Prepared By (Resource Unit Leader)			Approved By (Planning Section Chief)		Date	Time
SHAUN STEWART			DUANE DURGEE		05/22/2017	2000

Division/Group Assignment List (ICS 204 WF)

1. Incident Name:				3.					
WEST MIMS				Branch:		Division/Group:			
2. Operational Period: DAY SHIFT 0730-1930				IV		Y			
Date/Time From: 05/23/2017 0730 TUE		Date/Time To: 05/23/2017 1930 TUE							
4. Operations Personnel									
PLANNING OPERATIONS CHIEF		TRENT INGRAM PHIL DANIELS (T)		OPERATIONS CHIEF		RICK DOLAN EAST - FRED BOEHM			
BRANCH DIRECTOR		STEVE MILLER		DIVISION/GROUP SUPERVISOR		RANDY GREGORY SEAN BASSO (T)			
SAFETY		LARRY CONNELL		AIR TACTICAL GROUP SUPERVISOR		MARK NUNEZ, KEN MCLAUGHLIN			
5. Resources Assigned this Period									
Strike Team / Task Force / Resource Designator		LWD	Leader	Number Persons	Drop Off PT./Time	Pick Up PT./Time			
MODULE - WILDLAND FIRE - SW SAGUARO NP O-477		05/28	JASON THIVENER	7	EAST CAMP/0730	EAST CAMP/1930			
ENG3 - DURANGO FIRE - BRUSH 31 E-869		06/03	ALLEN R OTTMAN	4	EAST CAMP/0730	EAST CAMP/1930			
ENG6 MURRAY 86 - 4201016 E-61		05/26	KENNETH HARKINS	2	EAST CAMP/0730	EAST CAMP/1930			
ENG6 FRANKLIN 86 - GFC4202065 E-59		05/26	DOUGLAS SLAY	2	EAST CAMP/0730	EAST CAMP/1930			
ENG6 CHATTOOGA 86 E-60		05/26	ETHAN BEAID	2	EAST CAMP/0730	EAST CAMP/1930			
ENG6 NMSNF - ENGINE 661 E-604		05/26	LARRY MARTINEZ	3	EAST CAMP/0730	EAST CAMP/1930			
ENG6 - BANKHEAD E611 E-654		05/25	GARY CRAIG MOORE	3	EAST CAMP/0730	EAST CAMP/1930			
ENG6 - NMCIF - ENGINE 631 E-612		05/26	RICK F LUCERO	3	EAST CAMP/0730	EAST CAMP/1930			
ENG6 - DODGE 5500 ENGINE - T6 - ENGINE 603 E-662		05/26	MARK FRIZZELL	3	EAST CAMP/0730	EAST CAMP/1930			
ENG6 AR-OZF BM - E-651 E-713		05/29	PAUL DZIEKAN	3	EAST CAMP/0730	EAST CAMP/1930			
WTS1 - 357 - PB 350505 HASSELL E-476		05/25	ROBERT EDENFIELD	1	EAST CAMP/0730	EAST CAMP/1930			
WT1 - VIN# 26825 E-408		05/27	RICHARD PETERS	1	EAST CAMP/0730	EAST CAMP/1930			
WTT1 - VIN# E-588		05/25	HUBERT EDENFIELD HASSELLCO	1	EAST CAMP/0730	EAST CAMP/1930			
DO22 - 750K - VIN# 242515 E-505		05/24	BRIAN JENKINS	1	EAST CAMP/0730	EAST CAMP/1930			
8. Division/Group Communication Summary									
Function	Channel	RX Frequency N/W	RX Tone/NAC	TX Frequency N/W	TX Tone/NAC	Mode			
AIR TO GROUND	4	169.2000N	NONE	169.2000N	NONE	A			
COMMAND	8	159.2700N	156.7	151.1000N	123.0	A			
TACTICAL	9	159.2850N	NONE	159.2850N	156.7	A			
AIR TO GROUND	14	166.6750N	NONE	166.6750N	NONE	A			
AIR TO GROUND	15	169.1500N	NONE	169.1500N	NONE	A			
AIR GUARD	16	168.6250N	NONE	168.6250N	110.9	A			
9. Prepared By (Resource Unit Leader)			Approved By (Planning Section Chief)			Date		Time	
SHAUN STEWART			DUANE DURGEE			05/22/2017		2000	

Division/Group Assignment List (ICS 204 WF)

1. Incident Name:			3.			
WEST MIMS			IV		Y	
2. Operational Period: DAY SHIFT 0730-1930						
Date/Time From: 05/23/2017 0730 TUE		Date/Time To: 05/23/2017 1930 TUE				
4. Operations Personnel						
PLANNING OPERATIONS CHIEF		TRENT INGRAM PHIL DANIELS (T)		OPERATIONS CHIEF		RICK DOLAN EAST - FRED BOEHM
BRANCH DIRECTOR		STEVE MILLER		DIVISION/GROUP SUPERVISOR		RANDY GREGORY SEAN BASSO (T)
SAFETY		LARRY CONNELL		AIR TACTICAL GROUP SUPERVISOR		MARK NUNEZ, KEN MCLAUGHLIN
5. Resources Assigned this Period						
Strike Team / Task Force / Resource Designator		LWD	Leader	Number Persons	Drop Off PT./Time	Pick Up PT./Time
DO22 - 650K - VIN# 271777 E-528		05/24	KURT HALL	1	EAST CAMP/0730	EAST CAMP/1930
DO22 - 750K - VIN# 271777 E-530		05/24	GREG DAVIS	1	EAST CAMP/0730	EAST CAMP/1930
DO22 - JD 750K - VIN# 268173 E-504		05/24	JAIME EDENFIELD	1	EAST CAMP/0730	EAST CAMP/1930
EXCA T1 - VIN# 470405 HASSELL E-620		05/25	GREG DAVIS	1	EAST CAMP/0730	EAST CAMP/1930
SKG4 - MS-MSR-E611 E-652		05/26	REBECCA GOOSMAN	2	EAST CAMP/0730	EAST CAMP/1930
GOAT 1 - UTV PENDER LAND E-797		05/31	KEVIN CROOM	1	EAST CAMP/0730	EAST CAMP/1930
GOAT 2 - UTV ENDICOTT E-798		05/31	THOMAS ENDICOTT	1	EAST CAMP/0730	EAST CAMP/1930
TFLD O-508		05/25	LISA M GOWE	1	EAST CAMP/0730	EAST CAMP/1930
TFLD O-619		05/28	JOSH GOLDSTEIN	1	EAST CAMP/0730	EAST CAMP/1930
STEN O-423		05/22	MATT SMITH	1	EAST CAMP/0730	EAST CAMP/1930
EMPF E-376		05/24	PAUL PUGH	1	EAST CAMP/0730	EAST CAMP/1930
SOF2 O-461		05/24	LARRY KLOCK	1	EAST CAMP/0730	EAST CAMP/1930
8. Division/Group Communication Summary						
Function	Channel	RX Frequency N/W	RX Tone/NAC	TX Frequency N/W	TX Tone/NAC	Mode
AIR TO GROUND	4	169.2000N	NONE	169.2000N	NONE	A
COMMAND	8	159.2700N	156.7	151.1000N	123.0	A
TACTICAL	9	159.2850N	NONE	159.2850N	156.7	A
AIR TO GROUND	14	166.6750N	NONE	166.6750N	NONE	A
AIR TO GROUND	15	169.1500N	NONE	169.1500N	NONE	A
AIR GUARD	16	168.6250N	NONE	168.6250N	110.9	A
9. Prepared By (Resource Unit Leader)			Approved By (Planning Section Chief)		Date	Time
SHAUN STEWART			DUANE DURGEE		05/22/2017	2000

Division/Group Assignment List (ICS 204 WF)

1. Incident Name:			3.			
WEST MIMS			IV		Y	
2. Operational Period: DAY SHIFT 0730-1930						
Date/Time From: 05/23/2017 0730 TUE		Date/Time To: 05/23/2017 1930 TUE				
4. Operations Personnel						
PLANNING OPERATIONS CHIEF		TRENT INGRAM PHIL DANIELS (T)		OPERATIONS CHIEF		RICK DOLAN EAST - FRED BOEHM
BRANCH DIRECTOR		STEVE MILLER		DIVISION/GROUP SUPERVISOR		RANDY GREGORY SEAN BASSO (T)
SAFETY		LARRY CONNELL		AIR TACTICAL GROUP SUPERVISOR		MARK NUNEZ, KEN MCLAUGHLIN
6. Control Operations/Work Assignments:						
Task						
<ul style="list-style-type: none"> • Respond to any new starts within the division. • Patrol and mop up fuels appropriate to fuel type and anticipated weather and fire behavior. Eliminate obvious smoke which will trigger unnecessary calls to 911 system. 						
Purpose						
<ul style="list-style-type: none"> • Keep fire within established fire containment lines. 						
End State						
<ul style="list-style-type: none"> • Fire is contained by adequate control line to reduce threat to escape; minimizing damage to private timberlands, private lands, and other resource values at risk. • 						
7. Special Instructions:						
<p>Ensure LCES is in place before operations begin and stay hydrated. Drive defensively and with lights on at all times. Identify escape routes. Bridge near DP 9 restricted to pickups - No engines. Bridge on swamp perimeter road just east of first Branch has steep drop offs - 1 lane travel - watch for barricades.</p> <p>For IA protocol see page 7</p> <p>Medical Emergency Channel: Command ETA for Ambulance to Scene: Air: 20 – 30 mins Ground: 10 - 15 mins Paved roads only. IWI – IC or approved person will use Channel 16 (Air Guard) for contact with air ambulance Air Ambulance landing zone to be determined by IWI – IC Utilize engines to provide dust abatement, as needed, prior to air ambulance landing</p>						
8. Division/Group Communication Summary						
Function	Channel	RX Frequency N/W	RX Tone/NAC	TX Frequency N/W	TX Tone/NAC	Mode
AIR TO GROUND	4	169.2000N	NONE	169.2000N	NONE	A
COMMAND	8	159.2700N	156.7	151.1000N	123.0	A
TACTICAL	9	159.2850N	NONE	159.2850N	156.7	A
AIR TO GROUND	14	166.6750N	NONE	166.6750N	NONE	A
AIR TO GROUND	15	169.1500N	NONE	169.1500N	NONE	A
AIR GUARD	16	168.6250N	NONE	168.6250N	110.9	A
9. Prepared By (Resource Unit Leader)			Approved By (Planning Section Chief)		Date	Time
SHAUN STEWART			DUANE DURGEE		05/22/2017	2000

Division/Group Assignment List (ICS 204 WF)

1. Incident Name:			3.			
WEST MIMS			Branch:		Division/Group:	
2. Operational Period: DAY SHIFT 0730-1930			IV		Z	
Date/Time From: 05/23/2017 0730 TUE		Date/Time To: 05/23/2017 1930 TUE				
4. Operations Personnel						
PLANNING OPERATIONS CHIEF		TRENT INGRAM PHIL DAVIS (T)		OPERATIONS CHIEF		RICK DOLAN EAST - FRED BOEHM
BRANCH DIRECTOR		STEVE MILLER		DIVISION/GROUP SUPERVISOR		JASON LONGFELLOW
SAFETY		LARRY CONNELL		AIR TACTICAL GROUP SUPERVISOR		MARK NUNEZ, KEN MCLAUGHLIN
5. Resources Assigned this Period						
Strike Team / Task Force / Resource Designator		LWD	Leader	Number Persons	Drop Off PT./Time	Pick Up PT./Time
ENG6 - 361 E-775		05/28	DAVID T MARBERT	3	EAST CAMP/0730	EAST CAMP/1930
ENG6 - NMN2S - E 2-2 E-767		05/28	MAYLON BERT BROWN	2	EAST CAMP/0730	EAST CAMP/1930
ENG6 - OLF - E-692 E-482		05/21	LYNDSEY KUPFER	4	EAST CAMP/0730	EAST CAMP/1930
ENG6 - NC-NCS - PJ-7577 E-532		05/22	BRETT EVANS	2	EAST CAMP/0730	EAST CAMP/1930
ENG6 - BOULDER COUNTY SHERIFF - ENGINE 6532 E-538		05/23	PETER KORETZ	3	EAST CAMP/0730	EAST CAMP/1930
ENG6 - FOUR MILE FD - BRUSH 4632 E-540		05/23	ZACH LITTLEFIELD	3	EAST CAMP/0730	EAST CAMP/1930
ENG6 - OH-OHS E-62 E-761		05/27	JEFFREY G TUCKER	6	EAST CAMP/0730	EAST CAMP/1930
STEQ O-602		05/27	STEVE TEIGEN	1	EAST CAMP/0730	EAST CAMP/1930
EXCA T3 - VIN# GXHFE E-622		05/24	BUCK TODDENBERRY	1	EAST CAMP/0730	EAST CAMP/1930
DOZ3 - VIN# 302873 E-623		05/24	KELLY PITTMAN	1	EAST CAMP/0730	EAST CAMP/1930
ENG6 - AR-OUF - PCS - E-692 E-737		05/28	MATTHEW MICHAEL KAMPF	3	EAST CAMP/0730	EAST CAMP/1930
WTT2 - VIN# 009542 E-409		05/25	ANTHONY PALVICK	1	EAST CAMP/0730	EAST CAMP/1930
WTT2 (TACTICAL) - VIN# 9250 E-574		06/01	TONY TIPTON	1	EAST CAMP/0730	EAST CAMP/1930
8. Division/Group Communication Summary						
Function	Channel	RX Frequency N/W	RX Tone/NAC	TX Frequency N/W	TX Tone/NAC	Mode
AIR TO GROUND	4	169.2000N	NONE	169.2000N	NONE	A
COMMAND	8	159.2700N	156.7	151.1000N	123.0	A
TACTICAL	10	168.3500N	NONE	168.3500N	NONE	A
AIR TO GROUND	14	166.6750N	NONE	166.6750N	NONE	A
AIR TO GROUND	15	169.1500N	NONE	169.1500N	NONE	A
AIR GUARD	16	168.6250N	NONE	168.6250N	110.9	A
9. Prepared By (Resource Unit Leader)			Approved By (Planning Section Chief)		Date	Time
SHAUN STEWART			DUANE DURGEE		05/22/2017	2000

Division/Group Assignment List (ICS 204 WF)

1. Incident Name:			3.			
WEST MIMS			Branch:		Division/Group:	
2. Operational Period: DAY SHIFT 0730-1930			IV		Z	
Date/Time From: 05/23/2017 0730 TUE		Date/Time To: 05/23/2017 1930 TUE				
4. Operations Personnel						
PLANNING OPERATIONS CHIEF		TRENT INGRAM PHIL DAVIS (T)		OPERATIONS CHIEF		RICK DOLAN EAST - FRED BOEHM
BRANCH DIRECTOR		STEVE MILLER		DIVISION/GROUP SUPERVISOR		JASON LONGFELLOW
SAFETY		LARRY CONNELL		AIR TACTICAL GROUP SUPERVISOR		MARK NUNEZ, KEN MCLAUGHLIN
5. Resources Assigned this Period						
Strike Team / Task Force / Resource Designator		LWD	Leader	Number Persons	Drop Off PT./Time	Pick Up PT./Time
WTT2 - FARRELL TIMBER - VIN# 557261 E-410		05/26	BENJAMIN JOHNS	1	EAST CAMP/0730	EAST CAMP/1930
WTS2 - BLACK RANGE E-642		05/28	BRANDON SHEPPERD	1	EAST CAMP/0730	EAST CAMP/1930
TPL3 - WILDLANDS FIRE SRVC INC - 99744 E-465		06/01	SAM STRICKLAND	2	EAST CAMP/0730	EAST CAMP/1930
TFLD (T) O-513		05/23	NEIL CLINEMAN	1	EAST CAMP/0730	EAST CAMP/1930
STEN O-658		05/29	JAMES T ALLISON	1	EAST CAMP/0730	EAST CAMP/1930
STEN O-414		05/23	TIEGE DOWNES	1	EAST CAMP/0730	EAST CAMP/1930
STEQ O-662		05/30	WILLIAM BOJORQUES	1	EAST CAMP/0730	EAST CAMP/1930
EMPF E-314 602-571-2505		05/29	JOHN HECK	1	EAST CAMP/0730	EAST CAMP/1930
SOF2 505-470-2012 O-494		05/28	DARROLL ABEYTA	1	EAST CAMP/0730	EAST CAMP/1930
8. Division/Group Communication Summary						
Function	Channel	RX Frequency N/W	RX Tone/NAC	TX Frequency N/W	TX Tone/NAC	Mode
AIR TO GROUND	4	169.2000N	NONE	169.2000N	NONE	A
COMMAND	8	159.2700N	156.7	151.1000N	123.0	A
TACTICAL	10	168.3500N	NONE	168.3500N	NONE	A
AIR TO GROUND	14	166.6750N	NONE	166.6750N	NONE	A
AIR TO GROUND	15	169.1500N	NONE	169.1500N	NONE	A
AIR GUARD	16	168.6250N	NONE	168.6250N	110.9	A
9. Prepared By (Resource Unit Leader)			Approved By (Planning Section Chief)		Date	Time
SHAUN STEWART			DUANE DURGEE		05/22/2017	2000

Division/Group Assignment List (ICS 204 WF)

1. Incident Name:			3.			
WEST MIMS			Branch:		Division/Group:	
2. Operational Period: DAY SHIFT 0730-1930			IV		Z	
Date/Time From: 05/23/2017 0730 TUE		Date/Time To: 05/23/2017 1930 TUE				
4. Operations Personnel						
PLANNING OPERATIONS CHIEF		TRENT INGRAM PHIL DAVIS (T)		OPERATIONS CHIEF		RICK DOLAN EAST - FRED BOEHM
BRANCH DIRECTOR		STEVE MILLER		DIVISION/GROUP SUPERVISOR		JASON LONGFELLOW
SAFETY		LARRY CONNELL		AIR TACTICAL GROUP SUPERVISOR		MARK NUNEZ, KEN MCLAUGHLIN
6. Control Operations/Work Assignments:						
Task						
<ul style="list-style-type: none"> • Respond to any new starts within the division. • Patrol and mop up fuels appropriate to fuel type and anticipated weather and fire behavior. • Rehabilitate contingency line. 						
Purpose						
<ul style="list-style-type: none"> • Keep fire within established fire containment lines. 						
End State						
<ul style="list-style-type: none"> • Fire is contained by adequate control line to reduce threat to escape; minimizing damage to private timberlands, private lands, and other resource values at risk. 						
7. Special Instructions:						
Medical Emergency Channel: Command ETA for Ambulance to Scene: Air: 20 – 30 mins Ground: 10 - 15 mins Paved roads only. IWI – IC or approved person will use Channel 16 (Air Guard) for contact with air ambulance Air Ambulance landing zone to be determined by IWI – IC Utilize engines to provide dust abatement, as needed, prior to air ambulance landing						
For IA protocol see page 7						
2 - TPL Okie - O/H Donnie Harris DIVS 1 - 1050 KG - with operator GFC 1 - Appalachia 750 (Lease) with operator STEQ with 3-T2 Tractor Plow STEQ (Weaver) with 4-T3 Tractor Plow						
8. Division/Group Communication Summary						
Function	Channel	RX Frequency N/W	RX Tone/NAC	TX Frequency N/W	TX Tone/NAC	Mode
AIR TO GROUND	4	169.2000N	NONE	169.2000N	NONE	A
COMMAND	8	159.2700N	156.7	151.1000N	123.0	A
TACTICAL	10	168.3500N	NONE	168.3500N	NONE	A
AIR TO GROUND	14	166.6750N	NONE	166.6750N	NONE	A
AIR TO GROUND	15	169.1500N	NONE	169.1500N	NONE	A
AIR GUARD	16	168.6250N	NONE	168.6250N	110.9	A
9. Prepared By (Resource Unit Leader)			Approved By (Planning Section Chief)		Date	Time
SHAUN STEWART			DUANE DURGEE		05/22/2017	2000

AIR OPERATIONS SUMMARY (ICS220)

Prepared by: John Bragg

Prepared Date: 5/22/2017

Prepared Time: 17:00

1. INCIDENT NAME: West Mims	2. OPS PERIOD DATE: 5/23/17	START TIME: 0900	END TIME: 2030	SUNRISE: 0629	SUNSET TIME: 2021 (Folkston)
3. REMARKS Safety Notes: Hazards (SEE AND AVOID GENERAL AVIATION TRAFFIC AND AERIAL HAZARDS) -Maintain clear communications; confirm that drop location is clear; ground personnel state: "Clear to Drop" -Incident Aircraft conduct flight following with Pogo Helibase when ATGS is not up. -Aerial Ignition Group: Helicopter 1FW with PLDO; FIRB, Jon King. ORDERING/FLIGHT REQUESTS -Request Helicopter water drops through Air Attack -Request aerial ignition through Operations -Request Tankers/Retardant through Air Attack -Requests for Reconnaissance missions must go through Operations for pre-approval E-MAIL AIRCRAFT COSTS DAILY AT END OF SHIFT TO: al_d2011@yahoo.com			4. READY ALERT AIRCRAFT: 2BH Call 911 to request LIFEFLIGHT aircraft.		5. TFR: 7/1766; Surface to 3500' MSL; See NOTAM for full description. Frequency 120.8500

6. PERSONNEL	NAME	PHONE #	7. FREQUENCIES	AM	FM	8. FIXED-WING- Type/ Make-Model/ N#/ Base
AOBD	John Bragg Air Ops Desk	423-483-2798 912-637-5133	A/A - Fixed Wing A/A - Rotor / TFR A/G (Request) A/G 66 (Primary) A/G 72 (Secondary)	120.3500 120.8500	 169.2000 166.6750 169.1500	AIR ATTACK – ATGS – Mark Nunez / AC690 / N690RA / LCQ 805-975-5227 ATGS – Ken McLaughlin / Kodiak / N420Q / LCQ 813-997-0317
ASGS	Al Driesbach	805-703-0649				LEAD – ASM – Bravo xx As assigned
HEB2 - Pogo HEB2(T) - Pogo HEB1 - Lake City	Marc 'Boomer' Rudkin David Aldrich Brad Nelson	307-287-0440 520-490-8638 559-349-6793	Deck/TOLC (Pogo) Deck (Lake City)		168.0500 163.100	TANKERS – As available (T-01) BAE146 / N473NA / LCQ (Off Sundays) (T-02) BAE146 / N474NA / LCQ (Off Mondays) (T-164) RJ-85A / N374AC / LCQ (Off Thursdays) (T-911) DC-10 / N17085 / CHA (Off Sat. & Sun.)
	Pogo Helibase	912-496-4415				
	Lake City Helibase	561-512-6333	Air Guard		168.625 (110.9)	

9. HELICOPTER Remarks Box Legend: C=Cargo P=Passengers B=Bucket SN=Snorkel R=Rappel H=Hoist SH=Short Haul ME=Medical Evacuation/Extraction Exu=Exclusive Use

FAA N#	T Y	MAKE/ MODEL	BASE	START	READY to FLY	REMARKS	FAA N#	T Y	MAKE/ MODEL	BASE	START	READY to FLY	REMARKS
132BH	3	AS350 B3	Pogo (3GE1)	0700	0830	P, B Exu	13FH	1	UH-60A	Lake City (LCQ)	0700	0730	B Exu
351FW	3	AS350 B2	Pogo (3GE1)	0700	0830	P, B Exu	611CK (701)	1	SH-3H / S-61	Lake City (LCQ)	0700	0730	SN Exu
471CH	1	CH-47D	Lake City (LCQ)	0700	0730	SN Exu	612CK (702)	1	SH-3H / S-61	Lake City (LCQ)	0700	0730	SN *On Loan
161KA	1	K-1200	Lake City (LCQ)	0700	0730	B Exu	137BH	1	S70A-27	Lake City (LCQ)	0700	0730	B *On Loan
699RH	1	K-1200	Lake City (LCQ)	0700	0730	B Exu	472CH	1	CH-47D	Lake City (LCQ)	0700	0730	SN *On Loan

INCIDENT RADIO COMMUNICATIONS PLAN (ICS 205)

1. Incident Name:			2. Date/Time Prepared:			3. Operational Period: DAY SHIFT 0730-1930				
WEST MIMS			Date: 05/22/2017 Time: 1200			Date/Time From: 05/23/2017 0730 TUE			Date/Time To: 05/23/2017 1930 TUE	
4. Basic Radio Channel Use:										
Zone Group	Ch #	Function	Channel Name/Trunked Radio System Talkgroup	Assignment	RX Freq	RX Tone/NAC	TX Freq	TX Tone/NAC	Mode (A,D, or M)	Remarks
1 WEST	1	COMMAND	WEST OKEE REP		167.1250N	156.7	163.1500N	156.7	M	STEPHEN FOSTER STATE PARK
1 WEST	2	COMMAND	S. FOSTER	DIV D	159.1200N	NONE	151.3700N	100.0	A	WEST ROAD MAINTENANCE FL FFS CONTINGENCY
1 EAST	3	COMMAND	CORNELIA		159.1200N	NONE	151.3700N	82.5	A	
1 ALL DIVISIONS	4	AIR TO GROUND	A/G REQUEST	ALL DIVISIONS	169.2000N	NONE	169.2000N	NONE	A	
1	5	COMMAND	GFC EDDY	GA FORESTRY	159.4650N	NONE	151.1450N	123.0	A	GA FORESTRY ONLY
1	6	TACTICAL	GFC TAC 1	WEST ROAD MAINT	159.3900N	NONE	159.3900N	156.7	A	FL FFS CONTINGENCY
1	7	TACTICAL	V FIRE 26		154.3025N	NONE	154.3025N	156.7	A	
1	8	TACTICAL	OSCEOLA PROJECT		163.7125N	NONE	163.7125N	NONE	A	
1	9	TACTICAL	SE COMPACT		159.2850N	NONE	159.2850N	156.7	A	
1	10	TACTICAL	REFUGE TAC 1		168.3500N	NONE	168.3500N	NONE	A	
1	11	TACTICAL	REFUGE TAC 2		163.1000N	NONE	163.1000N	NONE	A	
1	12	TACTICAL	FFS 199		159.4425N	NONE	159.4425N	NONE	A	
1 WEST	13	TACTICAL	FFS 200	DIV D	159.4125N	NONE	159.4125N	NONE	A	
1 ALL DIVISIONS	14	AIR TO GROUND	AIR TO GRD 66	A/G PRIMARY	166.6750N	NONE	166.6750N	NONE	A	AIR TO GROUND PRIMARY
1 ALL DIVISIONS	15	AIR TO GROUND	AIR TO GRD 72	A/G SECONDARY	169.1500N	NONE	169.1500N	NONE	A	AIR / GROUND SECONDARY
1 ALL DIVISIONS	16	AIR GUARD	AIR GUARD	ALL DIVISIONS	168.6250N	NONE	168.6250N	110.9	A	EMERGENCY AIRCRAFT COMMUNICATIONS
5. Special Instructions:										
6. Prepared By (Communications Unit Leader)				Name: CHARLES J. RADCLIFF				Signature:		
ICS 205				IAP Page				Date/Time: 05/22/2017 1200		

INCIDENT RADIO COMMUNICATIONS PLAN (ICS 205)

1. Incident Name:	2. Date/Time Prepared:	3. Operational Period: DAY SHIFT 0730-1930	
WEST MIMS	Date: 05/22/2017 Time: 1200	Date/Time From: 05/23/2017 0730 TUE	Date/Time To: 05/23/2017 1930 TUE

4. Basic Radio Channel Use:

Zone Group	Ch #	Function	Channel Name/Trunked Radio System Talkgroup	Assignment	RX Freq	RX Tone/NAC	TX Freq	TX Tone/NAC	Mode (A,D, or M)	Remarks
2	1	TACTICAL	V FIRE 21	MUTUAL AID	154.2800N	NONE	154.2800N		A	MUTUAL AID CHANNEL
2 WEST	2	COMMAND	S. FOSTER		159.1200N	NONE	151.3700N	100.0	A	
2 EAST	3	COMMAND	CORNELIA	DIV M, N, O, SWING	159.1200N	NONE	151.3700N	82.5	A	STAGING, INITIAL ATTACK
2 ALL DIVISIONS	4	AIR TO GROUND	A/G REQUEST	ALL DIVISIONS	169.2000N	NONE	169.2000N	NONE	A	BY REQUEST ONLY
2	5	COMMAND	GFC EDDY	GA FORESTRY	159.4650N	NONE	151.1450N	123.0	A	GA FORESTRY ONLY
2 EAST	6	COMMAND	GA BEND	UNASSIGNED	159.2700N	156.7	151.1000N	156.7	A	
2 NORTH	7	COMMAND	FARGO RPT		159.2700N	156.7	151.1000N	100.0	A	
2 SOUTH	8	COMMAND	BAKER RPT	DIV A, Y, Z, DIV B	159.2700N	156.7	151.1000N	123.0	A	SWING, DIV C
2	9	TACTICAL	COMPACT	DIV Y	159.2850N	NONE	159.2850N	156.7	A	DIV M, DIV C
2	10	TACTICAL	REFUGE TAC 1	DIV N, DIV Z	168.3500N	NONE	168.3500N	NONE	A	STAGING
2	11	TACTICAL	OSCEOLA PROJECT	DIV O	163.7125N	NONE	163.7125N	NONE	A	
2	12	TACTICAL	FFS 199	INITIAL ATTACK	159.4425N	NONE	159.4425N	NONE	A	SWING, DIV A
2	13	TACTICAL	FFS 200	DIV B	159.4125N	NONE	159.4125N	NONE	A	
2 ALL DIVISIONS	14	AIR TO GROUND	AIR TO GRD 66	A/G PRIMARY	166.6750N	NONE	166.6750N	NONE	A	AIR / GROUND PRIMARY
2 ALL DIVISIONS	15	AIR TO GROUND	AIR TO GRD 72	A/G SECONDARY	169.1500N	NONE	169.1500N	NONE	A	AIR / GROUND SECONDARY
2 ALL DIVISIONS	16	AIR GUARD	AIR GUARD	ALL DIVISIONS	168.6250N	NONE	168.6250N	110.9	A	EMERGENCY AIRCRAFT COMMUNICATIONS

5. Special Instructions:

WEST MIMS DAY PLAN

6. Prepared By (Communications Unit Leader)	Name: CHARLES J. RADCLIFF	Signature:
ICS 205	IAP Page	Date/Time: 05/22/2017 1200

PHONE LIST - WEST MIMS FIRE


Position	Name	Phone Number	Position	Name	Phone Number
UNIFIED COMMAND			GISS	Brenda Mullholland	352-255-9094
NIMO IC	Mike Quesinberry	540-230-1262	ITSS	Randy Fountain	850-591-9130
Gold Team IC	Keith Mousel	352-442-2891	ITSS	Dean Groe	407-617-7342
Liason Officer	Daniel Stanley	850-661-1674			
Liason Officer	Mark Allen Dozier	478-251-4015	Telephone lines at ICP		
Liason Officer	Paul Stevens	252-216-6316	Information/PIO		912-637-5132
PUBLIC INFORMATION	Land Line	912-637-5108	Information		912-637-5108
Information Desk		904-452-4627	Air Ops		912-637-5133
NIMO Public Information	Judith Downing	530-908-5128	Ordering		912-637-5107
Public Information	Annaleasa Winter	904-705-3931	Ordering		912-637-5136
Refuge Public Info	Susie Heisey	912-286-3110	Ordering Fax		912-637-5104
AGENCY REPRESENTATIVES			Supply		912-637-5138
Refuge FMO	Reese Kerbow	912-276-0167	Ground Support		912-637-5105
Refuge AFMO	Reggie Forcine	912-614-4041	Finance		912-637-5109
Refuge Manager	Mike Lusk	912-390-2193	Finance Fax		912-637-5110
DNR Agency Liaison	SGT. Patrick Dupree	404-694-5596	Operations		912-637-5112
Ware Co EMA	Bill Parham	229-425-4549	Plans FAX		912-637-5115
Clinch Co EMA	Will Joyce	912-520-8581	Plans / Checkin		912-637-5137
Lanier Co EMA	Randy Patten	229-482-5070	Demob		912-637-5113
Charlton Co EMA	Bruce Young	912-390-2022	Communications		912-637-5116
Charlton Co Sheriff's Office	Inv. Clay Burnsel	912-276-2628			
Georgia EMA	Diane Adams	912-266-5421	Telephone lines at Eastside Camp		
NC-Forest Service	Greg Smith	828-230-8527	Operations		912-496-2278
PLANNING			Supply		912-496-3116
NIMO PSC	Darrel Schwilling	404-805-3159	Communications		912-496-2293
PSC ICP	Duane Durgee	352-278-0446	Medical		912-496-2289
PSC Eastside Camp	Joe Bishop	352-516-9767			
PSC ICP (T)	Jason Braunstein	434-249-9915	LAND OWNERS AND OTHER CONTACTS		
Fire Behavior Analyst	Bradley Smith	229-309-9077	Steve Davis	Am Forest Mgmt	912-614-1828
Fire Behavior Analyst(t)	Matt Filbert	208-720-7248	Allen C. Cross	Rayonier US Forest	904-796-7929
IMET	Joe Guoudward	240-778-5279	Dave Gather	Okie Electric	912-390-9755
THSP-ARA	Dan Byrd	240-778-5278	Chad Edwards	Railroad Contact	540-797-9918
READ	Rocky Chesser	912-276-3232	Steve Magnolia	FD Coordinator	904-537-5853
FWS READ	Carl Schmidt	478-365-2088	Terri Jenkins	FWS FD/VFD Contact	912-313-4225
FWS READ	Daniel Barrand	352-490-1959	Ned Neenan	Legacy Forestry	352-317-0738
FWS READ	Howard McClough	912-276-0552	Ken Zaydel	Social Circle FD	404-205-2738
FWS READ	Erin Daughtrey	912-223-6752	Royce Proctor	OKE Electric Coop	912-282-6873
SITL	Scott Crosby	352-275-4332		Okefenokee NWR	912-496-7366
SITL	Stuart Coombs	936-827-4233	Adam McCullough	NWR IA Duty Officer	912-496-4177
GISS	Domonic Marcanio	850-380-1656	Billy Estep	EMS Dir/Nassau Coun	904-813-3476
Training Specialist	David Hunt	863-221-6146			
Finance	General	912-637-5109			
NIMO Fin Chief	Carla Schamber	202-631-2254			
Fin Chief	Betty Palmiotto	850-408-6564			
Dep Fin Chief	Dawn Croch	352-206-5634			
Comp/Claims	Brett Steffen	941-531-0053			
Procurment	Tommy Price	863-661-4019			Ver 22May17
Time	Marci Glover	850-373-8254			

PHONE LIST WEST MIMS FIRE

Position	Name	Phone Number	Position	Name	Phone Number
OPERATIONS	Land Line	912-637-5112	SAFETY		
NIMO Ops	Kyle Smith	540-855-0233	NIMO Safety Officer	Gene Madden	404-805-7970
Lead Ops	Rick Dolan	352-353-5101	Safety Officer	Larry Grubbs	850-228-7755
West Field Lead Ops	Buck Kline	912-678-2694	Safety Officer	Larry Connell	352-303-3921
East Field Lead Ops	Fred Boehm	954-347-8071	Safety Officer (t)	Clay Stephens	702-575-0392
Planning Ops	Trent Ingram	229-726-0285	LOGISTICS		
Planning Ops (t)	Phil Daniels	720-315-4240	NIMO Logistics Chief	Sally Browning	404-805-5063
Structure	Aaron Guy	252-312-4369	Logistics Chief East Camp	Jim Peters	352-942-7218
Branch I	Ron Garcia	559-392-1045	Logistics Section Chief (t)	David McVay	850-625-5140
Division B	Ron Calhoun	478-290-9755	Facilities Unit Leader	Dennis Evans	478-957-9709
Division C	Chris Roberts	912-213-3138	Supply Unit Leader	Travis Shidal	
Division D	Walter Bowers	850-625-6630	Ground Spt Unit Ldr	Douglas Crocker	352-235-2352
IA Group	Greg Buckalew	252-475-8012	Ground Spt Unit Ldr	Charles Weathers (nights)	
IA Group (t)	Arturo Gasdik	707-834-8205	Ground Spt Unit Ldr	Mike Stigler	386-837-2289
Road Maint Group	Candice Kutrosky	719-651-0669	East Camp Grd Support	Glen Simmons	386-855-0379
			East Camp Grd Support	Mike Nelson	484-880-7494
Branch III	Marc Crain	720-315-4240	Ordering Manager	Mark McClellan	478-733-2606
Division M	David Smith	850-686-2970	Food Unit Leader	Steve Marshall	352-464-2721
Division N	Karen Scholl	909-553-7731	Security Manager	Greg Blanks	912-346-7367
Division N (t)	Chris Rankin	307-359-1997	Medical Unit Leader	Steve Russo	917-923-3980
Division O	Shawn Alexander	678-897-9137	Medical Unit Leader	Rich Dorazio	470-366-6302
Division O(t)	Michael Gue	305-338-6069	East Medical Unit Leader	Travis McGowen	321-863-7566
IA Group	Greg Buckalew		Communications Unit	24 Hour	912-637-5116
STAM Eastside Camp	Chris Rudd	541-660-0634	Communications Unit Ldr	Charles Radcliff	386-330-4162
North Ambulance/Oken EMS		470-532-8797	Communications Unit Ldr (t)	Paul Noa	850-276-5428
Branch IV	Steve Miller	386-937-0554	INCM	Mike Shipley	678-357-9814
			East Camp Communications		470-366-6306
Division A(t)	Jeff Bostwick	575-694-0280			
Division Y	Randy Gregory	850-519-3330			
Division Z	Jason Longfellow	386-212-9871			
Division Z(t)					
Division A/Y/Z Swing					
Structure Group Swing					
Refuge Advisor	Reggie Forcine	912-614-4041			
Florida Contingency	Keith Osteen				
FWS Contingency	Rocky Chesser	912-276-3232			
FFS Contingency	John Raulerson	386-292-5652			
FFS Contingency	Andy Lamborn	383-365-4441			
STAM Bethea	Adam Dummer	831-238-0991			
AIR OPERATIONS					
AOBD	John Bragg	423-483-2798			
ATGS	Ken McLaughlin	813-997-0317			
ATGS	Mark Nunez	805-975-5227			
ASGS	Al Driesback	805-703-0649			
HEB2-Pogo	Marc "Boomer" Rudkin	307-287-0440			
HEB1 - Lake City	Brad Nelson	559-349-6793			
Pogo Helibase (Hardline)		912-496-4415			
Lake City Helibase (Hardline)		561-512-6333			
Ver 22May17					

HEALTH AND SAFETY MESSAGE

Practice "Safety First" today because it may be too late to practice it tomorrow!

INCIDENT: West Mims Fire	DATE: Tuesday Day/Swing, May 23, 2017
Major Hazards & Risks: Logging Operations, Personal Hygiene, Driving	
<p>Logging Operations: <i>Timber logging is a major part of the local economy and provides us all with the paper products we need. Timber logging requires a lot of big equipment...feller bunchers, skidders, haul trucks, etc. If you have logging operations going on in your division give them the right of way and use alternate access roads when possible.</i></p> <p>Personal Hygiene: <i>The nature of the work we do sometimes makes it difficult to stay up on our hygiene. When we have poor hygiene a host of other issues can arise...respiratory problems, colds, flus, and other ailments. Take the time to wash your hands with soap and water before you eat and after you use the restroom. When you return to your hotel or home take advantage of a daily shower. The incident also provides a laundry service with drop off and pick up at the briefing area and ICP.</i></p> <p>Driving: <i>Driving continues to be one of the most hazardous things that we do. Just because the smoke has cleared doesn't mean the hazards have. Make sure you have your headlights on for day and night driving, eliminate distractions when you're behind the wheel, and watch for road hazards.</i></p>	
<p>80% of infectious diseases are</p>  <p>transmitted by touch...Wash up!</p>	<p>Fire Order of the Day:</p> <p><u>Give clear instructions and be sure they are understood.</u></p> <ul style="list-style-type: none">• Task - what is the job do be done?• Purpose - Why does this job need to be done?• End State - What should this job look like when it is done?

Gold Team Safety Officers: Larry, Larry, Gene, Clay(t)

INCIDENT SAFETY ANALYSIS 215a

West Mims Fire - Tuesday, May 23, 2017

8. Location	9. Hazard	6. Control or Abatement Action (Engineering, Administrative, PPE, Avoidance, Education, etc)
ALL	Helicopter Operations	<ul style="list-style-type: none"> ~ Helicopter operations should be used for priority missions. ~ Stay clear of all bucket drops when suppression actions are in place and allow 1 minute prior to re-entry. ~ Pilots or air supervisor ensure ground resources are clear before bucket drops. ~ Monitor A-G communications. ~ Follow aviation safety guidelines in IRPG and IHOG. ~ Ground resources advise pilot of local power lines and local visibility issues.
ALL	Train Traffic	<ul style="list-style-type: none"> ~ Observe warning signs when crossing tracks. ~ If no warning lights are posted, bring vehicle to a complete stop and check for incoming trains before crossing. ~ Use caution when crossing tracks with low vehicles or trailers. ~ Contact CSX to ensure awareness to fire resource locations.
A, B, C, D, O, Z, Contingency, IA	Power Utilities	<ul style="list-style-type: none"> ~ Notify all personnel of down electrical lines. ~ Refer to the IRPG page 24 for Power Line Safety. ~ Always treat downed wires as energized. ~ Identify and avoid high tension transmission lines. ~ In high winds or areas of dense smoke, avoid areas under power lines. ~ Be aware of utility restoration in your work area.
ALL	Air Operations	<ul style="list-style-type: none"> ~ Follow "Aviation Watch-Out Situations" on page 44, IRPG. ~ Don't plan on air resources for medical transport or resupply. ~ Ensure positive communication with all air resources. ~ Ensure communications are established with operators. ~ During airtanker operations clear the drop zone before approach of the lead plane.
ALL	Structure Protection & HAZMAT	<ul style="list-style-type: none"> ~ Review "Wildland Urban Interface" Watch outs, IRPG page 12. ~ Use "Structure Assessment" checklist, IRPG pages 13-15. ~ Follow "HAZMAT Incident Operations" on pages 34-36 in IRPG. ~ Identify and avoid damaged gas service near structures.
B, C, E, F, O, Y	Logging Operations	<ul style="list-style-type: none"> ~ Stay clear of active cutting operations. ~ If re-burns occur, stop cutting operations before entering the area. ~ Use caution when logging equipment is in the area or traveling on the roads. ~ Maintain communication with logging operation during operational period. ~ Logging operations have the potential to create new fire starts.
ALL & ICPs	Driving & Traffic	<ul style="list-style-type: none"> ~ Practice "Defensive Driving" techniques traveling on all roads and city streets. ~ Always use spotters when backing. ~ Honk horn to alert personnel when backing. ~ Keep clutter off dash and inside cab. ~ Follow Driving LCES (Lights, Chock blocks, Emergency brake, Seat belts). ~ Always use headlights. ~ Yield to pedestrians and bicycles. ~ Observe posted speed limits. ~ Use the 3 second rule for following distance when driving. ~ Use chock blocks, turn wheels into hill. ~ Avoid distractions (eating, cell phones, radio). ~ Ensure that windshields are kept clean of dust and bugs. ~ Use caution when traveling on roads that are impacted by smoke or dusty conditions. ~ When feasible, coordinate travel to and from the hotels to ensure two or more personnel travel together to mitigate long distances.
ALL	Personal Hygiene	<ul style="list-style-type: none"> ~ Don't share personal items such as water bottles communication devices and utensils. ~ Wash hands before meals, and after use of rest room facilities.
ALL	Hazard Trees	<ul style="list-style-type: none"> ~ Follow "Hazard Tree Safety" guidelines, IRPG page 22. ~ Post lookouts, or use a spotter in mop-up areas with personnel. ~ Don't park vehicles or take breaks in high concentrations of hazard trees. ~ Establish trigger points for disengagement during high wind events. ~ Remember that the hazard zone extends a minimum of 2 1/2 tree heights. ~ When working in bay areas, be aware of cypress trees. There are reports of them beginning to fall, due to burned out root systems.
ALL	Swing Shift	<ul style="list-style-type: none"> ~ Maintain high visibility in work area and wear vest while in roadway. ~ Use glow sticks to mark hazards that are readily visible. ~ Ensure personnel have a personal light (headlamp). ~ Watch for signs of fatigue. ~ Take breaks away from areas of known hazards.
ALL	Fireline Hazards	<ul style="list-style-type: none"> ~ Establish and continue to validate LCES. ~ Avoid radiant heat by wearing appropriate PPE correctly. ~ Use correct tool for task assigned. ~ Follow power line safety protocol as outlined on page 24 in IRPG. ~ Flag and isolate all HAZMAT and alert all personnel working in Division. ~ Follow WUI recommendations on pages 10-11 in IRPG.

INCIDENT SAFETY ANALYSIS 215a

ALL	Injury & Medical Emergency	<ul style="list-style-type: none"> ~ Assist injured employee and provide appropriate medical care. ~ Use EMT's on Division for initial care. ~ Follow medical protocol as outlined in ICS-206 (IWI) & IRPG Pgs 99-108
ALL	Communications	<ul style="list-style-type: none"> ~ Maintain communication with aviation resources, and suppression organization. ~ Ensure all know frequency and protocol for contacting resources. ~ Use clear terminology, ask questions and ensure good understanding, especially with new resources. ~ Utilize the ICS 205. ~ Utilize human repeaters when working in dead spots. ~ Know who to contact in case of an emergency and practice the IWI protocol and 9 Line ~ Add Boom for Divisions E & F is necessary to improve communcations.
ALL	Heavy Equipment Operations	<ul style="list-style-type: none"> ~ Ensure communications are established with operators. ~ Use hand signals if other communications are unavailable. ~ Maintain a 50'-100' exclusion area around equipment and increase it to 1 1/2 times tree height when in timber. ~ Use a spotter when backing.
ALL	Poisonous Plants	<ul style="list-style-type: none"> ~ Identify and Avoid hazard areas. ~ Launder clothing. ~ Shower frequently.
ALL	Indirect Fire line	<ul style="list-style-type: none"> ~ Post lookouts, identify escape routes and safety zones (IRPG pg. 6). ~ Review "Strategy/Indirect Attack" (IRPG pg. 77).
ALL	Severe Weather	<ul style="list-style-type: none"> ~ Review and follow Thunderstorm Safety guidelines in IRPG page 21. ~ Observe 30/30 Rule for lightning safety.....page 21, IRPG. ~ Establish "Trigger Points" to withdraw, and ensure all know rally site. ~ Use "Risk Management" process to determine retreat criteria and actions. ~ Carry rain gear and extra food and water if weather limits retreat to ICP. Adhere to direction found in Tornadoe Safety and Evacuation Plan
ALL	Wildlife	<ul style="list-style-type: none"> ~ Watch out for wildlife inside fire area and along roadways including bears, alligators, snakes, hogs, and deer. ~ Clean up all debris and trash during each operational period. ~ Don't feed or harass the animals.
ALL	Fatigue & Over Exertion	<ul style="list-style-type: none"> ~ Drink 1 quart of water/sports drink each hour during and after work. ~ Rotate crews out of smoky areas. ~ Set a reasonable work pace and allow adequate rest breaks while on the project. ~ Use buddy system to monitor personnel of heat related and fatigue issues. ~ Follow work / rest guidelines. Mitigate before next shift.
ALL	ATV/UTV use	<ul style="list-style-type: none"> ~ Ensure equipment is inspected and safe to use ~ Restrict UTV's to max width of 50" on ATV trails due to width and severe outsloped conditions. ~ Ensure operator is trained and certified to operate. ~ Ensure operator has proper PPE according to the Red Book. ~ At a minimum a hardhat with chin strap secured should be worn at all times. If your agency requires more advanced helmets and protection, follow your agency policy.
ALL	Unburned Area/Reburn Potential	<ul style="list-style-type: none"> ~ With the drying trend continuing, reburn of areas will become more of an issue. ~ Base actions upon observed and predicted fire behavior. ~ LCES Checklist (IRPG pg. 6). ~ Look Up, Down and Around (IRPG pg. 2-3)
ALL	Fog	<ul style="list-style-type: none"> ~ Obey posted speed limits at all times. Visibility may be limited to 1/2 mile in areas. ~ If driving in a convoy, maintain a safe distance between vehicles for emergency stops and distance. ~ Don't use high beam lights while driving, it can impair the vision of the driver and oncoming traffic.
ALL	Bees, Ticks, Mosquitoes, Spiders, Chiggers	<ul style="list-style-type: none"> ~ Canvas crew members for those with known allergic reactions to stings. ~ Ensure crew members have medication pens if needed. ~ Perform daily self inspection. ~ Use repellent as necessary. ~ Advanced Life Support, multi-dose epi and airway protection ~ Keep affected area clean and bandaged. ~ Be extra careful wen eating and/or drinkiing to avoid stings to mouth and throat.
ALL	Bees, Ticks, Mosquitoes, Spiders, Chiggers	<ul style="list-style-type: none"> ~ Canvas crew members for those with known allergic reactions to stings. ~ Ensure crew members have medication pens if needed. ~ Perform daily self inspection. ~ Use repellent as necessary. ~ Advanced Life Support, multi-dose epi and airway protection ~ Keep affected area clean and bandaged. ~ Be extra careful wen eating and/or drinkiing to avoid stings to mouth and throat.

1. Incident/Project Name		2. Operational Period						
West Mims Fire		Date/Time 5/23/17-5/24/17 0730 - 0200						
3. Ambulance Services								
Name	Complete Address	Phone & EMS Frequency		Advanced Life Support (ALS) Yes No				
Clinch County EMS	1050 Valdosta Hwy Homerville Ga	911		YES				
Charlton County EMS	321 Georgia Ave. St. George GA	911		YES				
4. Air Ambulance Services								
Name	Phone	Type of Aircraft & Capability						
Air Methods	888-763-1010	AS 350 with night vision capabilities						
Air Evac	888-269-6006	206 L1 + with night vision capabilities						
Trauma	800-223-4878	Bell 407 & EC153 both with night vision capabilities						
5. Hospitals								
Name Complete Address	GPS Datum – WGS 84 Coordinate Standard Degrees Decimal Minutes DD° MM.MMM' N - Lat DD° MM.MMM' W - Long		Travel Time Air Gnd		Phone	Helipad Yes No		Level of Care Facility
	Lat:	Long:						
Memorial Satilla Health 1900 Teveau St. Waycross GA 31501	Lat:	N 31' 13.452	15 mins	45 mins	912-283-3030	<input checked="" type="checkbox"/>	<input type="checkbox"/>	Level III
	Long:	W 82' 20.875						
	VHF:							
Clinch Memorial 1050 Valdosta Hwy Homerville Ga 31634	Lat:	N 31' 01.975	20 mins	30 mins	912-487-5211	<input checked="" type="checkbox"/>	<input type="checkbox"/>	Level IV
	Long:	W 82' 45.850						
	VHF:							
Ed Frazier Hospital N. 3 rd Street MacClenny Fl 32036	Lat:	N 30' 28.482	15 mins	45 mins	904-259-3151	<input checked="" type="checkbox"/>	<input type="checkbox"/>	Level IV
	Long:	W 82' 11.896						
	VHF:							
Shands Jacksonville 655 West 8 th Street Jacksonville Fl 32209	Lat:	N 30' 20.890	45 mins	90 mins	904-224-0411	<input checked="" type="checkbox"/>	<input type="checkbox"/>	Level I Trauma Center
	Long:	W 81' 39.862						
	VHF:							
UF Shands Burn Center 1600 SW Archer Rd. Gainesville Fl 32610	Lat:	N 29' 38.648	45 mins	105 mins	352-265-8932	<input checked="" type="checkbox"/>	<input type="checkbox"/>	Burn Center
	Long:	W 82' 21.189						
	VHF:							
Notes:								
Transport decisions will be made in consultation with the MEDL after report of patient condition through communications and 9-line protocol								

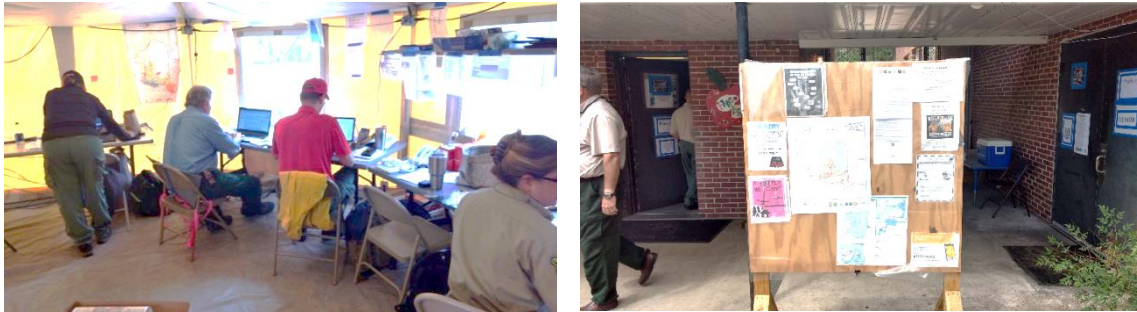
6. Division Branch Group	Area Location Capability	
Division B/C (DAY) -Penny McDonagh 470-366-6301	EMS Responders & Capability:	<u>EMPF</u>
	Equipment Available on Scene:	
	Medical Emergency Channel:	Command
	ETA for Ambulance to Scene:	
	Air:	20-30 mins
	Ground:	10-15 mins paved roads only
	Approved Helispot:	To be determined by the IC of the IWI
	Lat:	
	Long:	
Division C/D (DAY) -Gary Allen Ford 470-532-8807	EMS Responders & Capability:	<u>EMPF</u>
	Equipment Available on Scene:	
	Medical Emergency Channel:	Command
	ETA for Ambulance to Scene:	
	Air:	20-30 mins
	Ground:	10-15 mins paved roads only
	Approved Helispot:	To be determined by the IC of the IWI
	Lat:	
	Long:	
Division M/N (DAY) -Lionel Van Group 928-235-7059	EMS Responders & Capability:	<u>EMPF</u>
	Equipment Available on Scene:	
	Medical Emergency Channel:	Command
	ETA for Ambulance to Scene:	
	Air:	20-30 mins
	Ground:	10-15 mins paved roads only
	Approved Helispot:	To be determined by the IC of the IWI
	Lat:	
	Long:	
Division O (DAY) -Dean Carpenter 229-561-4224	EMS Responders & Capability:	<u>EMPF</u>
	Equipment Available on Scene:	UTV
	Medical Emergency Channel:	Command
	ETA for Ambulance to Scene:	
	Air:	20-30 mins
	Ground:	10-15 mins paved roads only
	Approved Helispot:	To be determined by the IC of the IWI
	Lat:	
	Long:	
Division A/Y (DAY) -Paul Pugh 602-376-9812	EMS Responders & Capability:	<u>EMPF</u>
	Equipment Available on Scene:	
	Medical Emergency Channel:	Command
	ETA for Ambulance to Scene:	
	Air:	20-30 mins
	Ground:	10-15 mins paved roads only
	Approved Helispot:	To be determined by the IC of the IWI
	Lat:	
	Long:	
Division Z -John Heck 602-571-2505	EMS Responders & Capability:	<u>EMPF</u>
	Equipment Available on Scene:	
	Medical Emergency Channel:	Command
	ETA for Ambulance to Scene:	
	Air:	20-30 mins
	Ground:	10-15 mins paved roads only
	Approved Helispot:	To be determined by the IC of the IWI
	Lat:	
	Long:	

Division C (SWING) -Kathy Nemmers 602-885-3115	EMS Responders & Capability:	<u>EMPF</u>
	Equipment Available on Scene:	
	Medical Emergency Channel:	Command
	ETA for Ambulance to Scene:	
	Air:	20-30 mins
	Ground:	10-15 mins paved roads only
	Approved Helispot:	To be determined by the IC of the IWI
	Lat:	
	Long:	
Division A/Y (SWING) -Stephen Wolfstich 520-508-9807	EMS Responders & Capability:	<u>EMPF</u>
	Equipment Available on Scene:	
	Medical Emergency Channel:	Command
	ETA for Ambulance to Scene:	
	Air:	20-30 mins
	Ground:	10-15 mins paved roads only
	Approved Helispot:	To be determined by the IC of the IWI
	Lat:	
	Long:	
Division O/Z (SWING) -Alyse Guterrez 602-999-8011	EMS Responders & Capability:	<u>EMPF</u>
	Equipment Available on Scene:	
	Medical Emergency Channel:	Command
	ETA for Ambulance to Scene:	
	Air:	20-30 mins
	Ground:	10-15 mins paved roads only
	Approved Helispot:	To be determined by the IC of the IWI
	Lat:	
	Long:	
Branch I Ambulance (DAY/SWING) -Clinch County EMS 470-532-8806	EMS Responders & Capability:	<u>ALS</u>
	Equipment Available on Scene:	ALS Ambulance
	Medical Emergency Channel:	Command
	ETA for Ambulance to Scene:	
	Air:	20-30 mins
	Ground:	10-15 mins paved roads only
	Approved Helispot:	To be determined by the IC of the IWI
	Lat:	
	Long:	
Branch III Ambulance (DAY/SWING) -Golden Isle 912-602-9224	EMS Responders & Capability:	<u>ALS</u>
	Equipment Available on Scene:	ALS Ambulance
	Medical Emergency Channel:	Command
	ETA for Ambulance to Scene:	
	Air:	20-30 mins
	Ground:	10-15 mins paved roads only
	Approved Helispot:	To be determined by the IC of the IWI
	Lat:	
	Long:	
Branch IV Ambulance (DAY/SWING) -Okefenokee EMS	EMS Responders & Capability:	<u>ALS</u>
	Equipment Available on Scene:	ALS Ambulance
	Medical Emergency Channel:	Command
	ETA for Ambulance to Scene:	
	Air:	20-30 mins
	Ground:	10-15 mins paved roads only
	Approved Helispot:	To be determined by the IC of the IWI
	Lat:	
	Long:	

7. Prepared By (Medical Unit Leader)	8. Date/Time	9. Reviewed By (Safety Officer)	10. Date/Time
Steve Russo MEDL Travis McGowen MEDL (T)	5/22/17		

What does a Public Information Officer do??inform people.....

- Media
- Communities
- Incident Personnel
- Agencies
- Organizations



How can You Help??



1. Continue to Follow Us on Facebook
#WestMimsFire
#Okefenokee
@OkefenokeeWildlifeRefuge
On Facebook search Okefenokee Wildlife Refuge and “like us
2. Send us pictures and videos to OkeFirePIO@gmail.com
3. Tell us your home unit Facebook page so we can share some of your posts.

**DEMOB LIST
05/23/2017**

EQUIPMENT

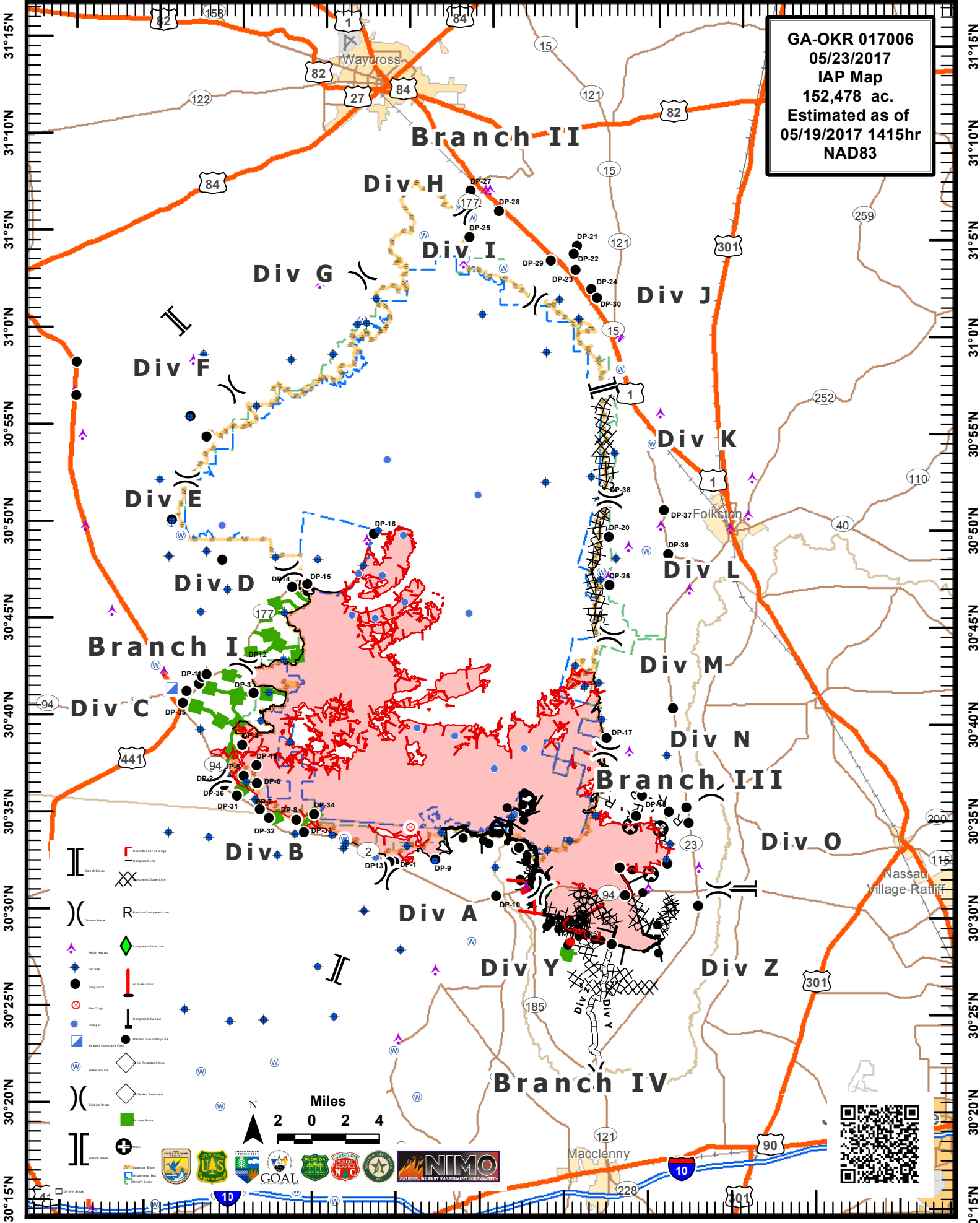
E-58	(ENG6)	ENG6-SE FOREST RESOURCES
E-77	(ENG6)	ENG6-6171
E-144	(ENG6)	ENG6-WILDLANDS FIRE SERVICE
E-147	(ENG6)	PATRICK-E95
E-237	(ENG6)	ENG6-FWS E262
E-257	(ENG6)	ENG6-ATTACK ONE FIRE MGMT
E-262	(ENG6)	ENG6-WILDLANDS FIRE SERVICE
E-263	(ENG6)	ENG6-SCHOLL FIRE & FUELS
E-264	(ENG6)	ENG6-E264 - ATWILDFIRE
E-277	(ENG6)	ENG6-WEST METRO – BRUSH 39
E-284	(ENG6)	ENG6-CROSS TIMBERS FIRE
E-286	(ENG6)	ENG6-FIRE MNGMT SER 351086
E-287	(ENG6)	ENG6-TGF FORESTRY AND FIRE
E-451	(ENG6)	ENGINE-T6-OK-#4
E-452	(ENG6)	ENGINE-T6-OK-#1
E-453	(ENG6)	ENG6-OK-OKS SE 372
E-482	(ENG6)	ENG6-OLF-E-692
E-535	(ENG6)	ENGINE- T6-BALDWIN
E-536	(ENG6)	FIRE TRAX LLC-#610
E-539	(ENG6)	ENGINE-T6-WILDLANDS FIRE
E-541	(ENG6)	ENG-T6-BRUSH FIRE
E-572	(PU)	PICK UP ACS29235
E-723	(ENG6)	ENG6-VIN#C35321
E-731	(ENG6)	J3 CONT 07
E-732	(ENG6)	J3 CONT 07
E-733	(ENG6)	J3 CONT 12
E-768	(ENG6)	ENGINE-T6-J3 CONTRACTING
E-608	(ENG6)	ENGINE-T6- LANE
E-609	(ENG6)	ENGINE-T6-LANE

OVERHEAD

O-503	(SEC1)	FLEMING, ROBERT
O-349	(TFLD)	GOYINGS, JEFF
O-409	(TPOP)	JOHNSON, CHARLES
O-381	(HEQB)	KINDER, JOHN
O-339	(DIVS)	LAGO, JASON
O-389	(MEDL)	LARICOS, MATTHEW CURTIS
O-411	(DIVS)	MOLVE, JUAN
O-361	(TNSP)	MOORE JR, LAWRENCE
O-395	(SOF2)	WILLIAMS, JAMES DANIEL
O-382	(TFLD)	GERMAN, BRIAN V
O-415	(TFLD)	PORCHAS, ADRIAN
O-358	(STEN)	RUDOLF, HANS
O-423	(STEQ)	SMITH, MATT
O-418	end of shift (TFLD)	AMUNDSON, PAUL
O-420	end of shift (TFLD)	HASKINS, MATTHEW R
O-394	end of shift (FOBS)	MACHADO, WHITNEY G
O-421	end of shift (STEQ)	MARQUEZ, MARIO
O-424	end of shift (DIVS)	MORRIS, JOE C
O-433	end of shift (EQPM)	STRONG, JOHN E
O-430	end of shift (RCDM)	SKJERVEN, JOEL H
O-414	end of shift (STEN)	DOWNES, TIEGE
O-419	end of shift (TFLD)	LIBERCAJT, GEORGE M

IF YOU ARE FLYING HOME PLEASE CONTACT DEMOB AT LEAST 3 DAYS BEFORE FLIGHT FOR ARRANGEMENTS.
PHONE # 1-912-637-5113 EMAIL demobwestmimsfire@gmail.com

GA-OKR 017006
05/23/2017
IAP Map
152,478 ac.
Estimated as of
05/19/2017 1415hr
NAD83



This Page Intentionally left blank.

Medical Incident Report

FOR ALL MEDICAL EMERGENCIES: IDENTIFY ON SCENE INCIDENT COMMANDER BY NAME AND POSITION AND ANNOUNCE "MEDICAL EMERGENCY" TO INITIATE RESPONSE FROM IMT COMMUNICATIONS/DISPATCH.

Use items one through nine to communicate situation to communications/dispatch.

1. CONTACT COMMUNICATIONS/DISPATCH

Ex: "Communications, Div. Alpha. Stand-by for Priority Medical Incident Report." (If life threatening request designated frequency be cleared for emergency traffic.)

2. INCIDENT STATUS: Provide incident summary and command structure.

Nature of Injury/Illness		<i>Describe the injury (Ex: Broken leg with bleeding)</i>
Incident Name		<i>Geographic Name + "Medical" (Ex: Trout Meadow Medical)</i>
Incident Commander		<i>Name of IC</i>
Patient Care		<i>Name of Care Provider (Ex: EMT Smith)</i>

3. INITIAL PATIENT ASSESSMENT: Complete this section for each patient. This is only a brief, initial assessment. Provide additional patient info after completing this 9 Line Report.

Number of Patients:	Male / Female	Age:	Weight:
Conscious? <input type="checkbox"/> YES <input type="checkbox"/> NO = MEDEVAC!			
Breathing? <input type="checkbox"/> YES <input type="checkbox"/> NO = MEDEVAC!			
Mechanism of Injury: <i>What caused the injury?</i>			
Lat/Long (Datum WGS84) <i>Ex: N 40° 42.45' x W 123° 03.24'</i>			

4. SEVERITY OF EMERGENCY, TRANSPORT PRIORITY

SEVERITY	TRANSPORT PRIORITY
<input type="checkbox"/> URGENT-RED Life threatening injury or illness. <i>Ex: Unconscious, difficulty breathing, bleeding severely, 2° – 3° burns more than 4 palm sizes, heat stroke, disoriented.</i>	Ambulance or MEDEVAC helicopter. Evacuation need is IMMEDIATE.
<input type="checkbox"/> PRIORITY-YELLOW Serious injury or illness. <i>Ex: Significant trauma, not able to walk, 2° – 3° burns not more than 1-2 palm sizes.</i>	Ambulance or consider air transport if at remote location. Evacuation may be DELAYED.
<input type="checkbox"/> ROUTINE-GREEN Not a life threatening injury or illness. <i>Ex: Sprains, strains, minor heat-related illness.</i>	Non-Emergency. Evacuation considered Routine of Convenience.

5. TRANSPORT PLAN:

Air Transport: (Agency Aircraft Preferred)

<input type="checkbox"/> Helispot	<input type="checkbox"/> Short-haul/Hoist	<input type="checkbox"/> Life Flight	<input type="checkbox"/> Other
Ground Transport:			
<input type="checkbox"/> Self-Extract	<input type="checkbox"/> Carry-Out	<input type="checkbox"/> Ambulance	<input type="checkbox"/> Other

6. ADDITIONAL RESOURCE/EQUIPMENT NEEDS:

<input type="checkbox"/> Paramedic/EMT(s)	<input type="checkbox"/> Crew(s)	<input type="checkbox"/> SKED/Backboard/C-Collar
<input type="checkbox"/> Burn Sheet(s)	<input type="checkbox"/> Oxygen	<input type="checkbox"/> Trauma Bag
<input type="checkbox"/> Medication(s)	<input type="checkbox"/> IV/Fluid(s)	<input type="checkbox"/> Cardiac Monitor/AED
<input type="checkbox"/> Other (i.e. splints, rope rescue, wheeled litter)		

7. COMMUNICATIONS:

Function	Channel Name/Number	Receive (Rx)	Tone/NAC *	Transmit (Tx)	Tone/NAC *
<i>Ex: Command</i>	<i>Forest Rpt, Ch. 2</i>	<i>168.3250</i>	<i>110.9</i>	<i>171.4325</i>	<i>110.9</i>
COMMAND					
AIR-TO-GRND					
TACTICAL					

*(NAC for digital radio system)

8. EVACUATION LOCATION:

Lat/Long (Datum WGS84) <i>EX: N 40 42.45' x W 123 03.24'</i>	
Patient's ETA to Evacuation Location:	
Helispot/Extraction Size and Hazards:	

9. CONTINGENCY:

Considerations: <i>If primary options fail, what actions can be implemented in conjunction with primary evacuation method? Be thinking ahead...</i>	REMEMBER: Confirm ETA's of resources ordered Act according to your level of training Be Alert. Keep Calm. Think Clearly. Act Decisively.
--	--