

GPS Position: Datum: WGS 84 Coordinate System: DD MM.mm'

INCIDENT ACTION PLAN WEST MIMS FIRE OPERATIONAL PERIODS MAY 24, 2017 TO MAY 25, 2017 0730-1930/1400-0200

SOUTHERN STATES TYPE-1 IMT

QR for IAP
Maps



GA-OKR-017006

FWS FFF2000000KYJ70
USFS PRKYJ717_1502 (P)
NPS PFFSKJ7017.00.1

QR for



Schedule

0730 Pre-Op Briefing
0800 Morning Briefing
1100 C & G
1400 Swing Briefing @ Bethea
1600 Pre Planning Meeting
1700 Planning Meeting



INCIDENT OBJECTIVES (ICS 202)

1. Incident Name:	2. Operational Period: DAY SHIFT 0730-1930	
WEST MIMS	Date/Time From: 05/24/2017 0730 WED	Date/Time To: 05/24/2017 1930 WED
3. Objective(s):		
<ul style="list-style-type: none"> • Provide for the safety and security of incident personnel and public in all incident operations through sound risk assessment and hazard mitigations. • Maintain a positive working relationship with all adjacent landowners, cooperators State and Federal partners. Inform, involve and communicate incident planning and operations with all partners. • Confine all fires that are within the Okefenokee National Wildlife Refuge, inside the Refuge and/or inside the swamp edge break if possible. Aggressively suppress all fire outside the swamp edge boundary. • In cooperation with local timberland owners, use full suppression strategies and tactics to minimize damage to private timberlands and improvements and to prevent fires outside the Refuge from entering the Refuge. • Assist in management and suppression of additional fires (new starts or breakouts) in the vicinity as approved by Agency Administrators and Unified Incident Commanders. • Protect all cultural and archeological sites and structures within the refuge. • Manage the fires cost-effectively consistent with the values at risk. • Implement structure protection as necessary for at-risk facilities and communities. • Coordinate suppression actions with assigned Refuge Resource Advisors. • Conduct all operations in a harassment-free environment. There will be a no tolerance atmosphere for harassment, alcohol, or illegal drug use. Everyone will be treated with dignity and respect. • Identify and initiate suppression repair on all Divisions. 		
4. Operational Period Command Emphasis:		
Branch IV Keep fire East of the North Prong of St Mary's River; West of Nassau county Florida; and North of Baker county Florida Branch III Keep fire North of Rayonier Road 10, West of St Mary's River, and South of Stokes Road Keep fire within the Okefenokee Refuge Swamp Edge Break Boundary. Respond to initial attack fires on new starts within: *South of Suwannee Canal *Within the Okefenokee jurisdictional boundaries *Within state properties inside Perimeter Road		
General Situational Awareness:		
Utilize confine, contain, and point source protection strategies and tactics that commit operations personnel only where and when they can be successful, under conditions where important values at risk are protected with the least exposure.		
5. Site Safety Plan Required? Yes <input type="checkbox"/> No <input checked="" type="checkbox"/>		
Approved Site Safety Plan(s) Located at:		
6. Incident Action Plan (the items checked below are included in this Incident Action Plan):		
<input checked="" type="checkbox"/> ICS 202 <input checked="" type="checkbox"/> ICS 203 <input checked="" type="checkbox"/> ICS 204 <input checked="" type="checkbox"/> ICS 205 <input type="checkbox"/> ICS 205A <input checked="" type="checkbox"/> ICS 206	<input type="checkbox"/> ICS 207 <input checked="" type="checkbox"/> ICS 208 <input checked="" type="checkbox"/> ICS 220 <input checked="" type="checkbox"/> Map/Chart <input checked="" type="checkbox"/> Weather Forecast/Tides/Currents	Other Attachments: <input checked="" type="checkbox"/> PIO MESSAGE <input checked="" type="checkbox"/> TENTATIVE DEMOB <input checked="" type="checkbox"/> SAFETY MESSAGE <input type="checkbox"/> _____
7. Prepared by: DUANE DURGEE	Position/Title: PSC1	Signature:
8. Approved by Incident Commander:		Signature:
ICS 202 IAP Page		Date/Time: 05/23/2017 2000

ORGANIZATION ASSIGNMENT LIST (ICS 203)

1. Incident Name:		2. Operational Period: DAY SHIFT 0730-1930	
WEST MIMS		Date/Time From: 05/24/2017 0730	Date/Time To: 05/24/2017 1930
		WED	WED
3. Incident Commander(s) and Command Staff:		GIS SPECIALIST CLINT ROBERTS, KEVIN WINTER	
IC/UC	SAM LENEAVE, KEITH MOUSEL (T), MIKE QUESINBERRY	INCIDENT METEOROLOGIST	JOE GOUDSWARD
SAFETY OFFICER	LARRY CONNELL, LARRY GRUBBS CLAY STEPHENS (T)	FIRE BEHAVIOR ANALYST; AIR RESOURCE ADVISOR	BRAD SMITH, MATT FILBERT (T) , ANDREW TAYLOR (T) DAN BYRD, THSP-ARA,
INFORMATION OFFICER	ANNALEASA WINTER TODD SCHROEDER	6. Logistics Section:	
LIAISON OFFICER	ALAN DOZIER DANIEL STANLEY	CHIEF	EAST - JIM PETERS WEST - DAVID MCVAY (T)
4. Agency/Organization Representative(s):		SUPPORT BRANCH DIRECTOR - NIGHT	JOHN BELLMORE
Agency/Organization	Name	SUPPLY UNIT	WEST-LAUREN SMITH EAST-TRAVIS SHIDAL
GFC PROTECTION	FRANK SORRELLS	FACILITIES UNIT	WEST-DENNIS EVANS EAST-CURTIS ASAY
OKE REF MGR/ASSIST	MICHAEL LUSK; SARA CLARDY	GROUND SUPPORT UNIT	WEST-GLENN SIMMONS, MIKE NELSON EAST-DOUGLAS CROCKER, CHARLES WEATHERS
OKE REF FMO	REESE KERBOW		
GOAL	JIM BARRETT		
FL FFS	JOHN RAULERSON		
GEMA	DIANE ADAMS	COMMUNICATIONS UNIT	CHUCK RADCLIFF PAUL NOA (T)
NORFOLK SOUTHERN	CHAD EDWARDS	MEDICAL UNIT	WEST-STEPHEN RUSSO, TRAVIS MCGOWEN EAST-BRAD BURNS, MATTHEW LARICOS (T)
CLINCH CO EMA	WILL JOYCE; RANDY PATTEN	COMT	WEST-KELLY TOWE; ROGER MENARD EAST-STEVEN LANDON
CHARLTON CO EMA	BRUCE YOUNG	FOOD UNIT	STEPHEN MARSHALL BRANTLEY SMITH (T)
WARE CO EMA	BILLY PARHAM	SECURITY UNIT	GREG BLANKS
NCFS	GREG SMITH	ORDM	MARK MCCLELLAN, MICHAEL STIGLER (T) TAMARA KLINDT
NASSAU COUNTY EMS	BILLY E STEP	RCDM	LAUREN SMITH, JAKE CLEVINGER
BAKER CO SO	BECK PARKER 904-955-6454	EQPM	KIRBY HENNINSEN; JASON MCHAN
5. Planning Section:		RADO	
CHIEF	DUANE DURGEE JOE BISHOP (T)	JOHN BETHEA STAGING AREA - BCMG (DAY)	RAY GONZALAS; BOB EMRICK JAWANA STEPHENS (T)
PSC2	JASON BRAUNSTEIN (T)	JOHN BETHEA STAGING AREA - BCMG (NIGHT)	BEN REICK
RESOURCES UNIT	SHAUN STEWART; TIFFANY PATE TOM WINSHIP; JEFF TURNER (T)	JOHN BETHEA STAGING AREA - STAM	ADAM DUMMER CHRIS RUDD
STATUS CHECKIN	CARLA ROBERTS JESSICA VALDEZ	JOHN BETHEA STAGING AREA - EQMG	JOHN STRONG
SITUATION UNIT	SCOTT CROSBY STUART COOMBS	JOHN BETHEA STAGING AREA CAMP	JUWANNA SAMPSON
DEMOBILIZATION UNIT	BOBBY CAHAL DAVID BROWN		
DOCUMENTATION UNIT	JAN FLEMING		
ITSS	DEAN GROE RANDALL FOUNTAIN		
TRAINING SPECIALIST	BRAD STEWART DAVID HUNT		
GIS SPECIALIST	DOMINIC MARCANIO, BRENDAN MULHOLLAND (T), ANDREW THOMPSON		
9. Prepared By:	Name: SHAUN STEWART	Position/Title: RESL	Signature:
ICS 203	IAP Page	Date/Time: 05/23/2017 1128	

ORGANIZATION ASSIGNMENT LIST (ICS 203)

1. Incident Name:		2. Operational Period: DAY SHIFT 0730-1930	
WEST MIMS		Date/Time From: 05/24/2017 0730	WED
		Date/Time To: 05/24/2017 1930	WED
CREW BOSS JUWANNA SAMPSON		DIVISION/GROUP	Y
			RANDY GREGORY SEAN BASSO (T)
7. Operations Section:			
OPS SECTION CHIEF	RICK DOLAN EAST-FRED BOEHM, WEST-BUCK KLINE	DIVISION/GROUP	Z
			JASON LONGFELLOW
7b. Air Operations Branch:			
PLANNING OPS	TRENT INGRAM PHIL DANIELS (T)	AIR OPS BRANCH DIRECTOR	JOHN BRAGG
SWING SHIFT OPS SECTION CHIEF (BRANCH I, III, IV)		AIR SUPPORT GROUP SUPERVISOR	AL DRIESBACH
		AIR TACTICAL GROUP SUPERVISOR	MARK NUNEZ, KEN MCLAUGHLIN
Branch	I	HEB1 POGO	MARC RUDKIN
BRANCH DIRECTOR DAY	RON GARCIA		
DIVISION/GROUP	DIV B		
DIVISION/GROUP	DIV C	CHRIS ROBERTS PAUL AMUNDSON (T)	
DIVISION/GROUP	DIV D	WALTER BOWERS HEATHER GRIFFIN (T)	
DIVISION/GROUP	FL FFS CONTINGENCY	ANDY LAMBORN	
DIVISION/GROUP	ROAD MAINTENANCE	CANDICE KUTROSKY CHAD STOVER (T), CASEY OCONNER (T)	
BRANCH DIRECTOR SWING SHIFT	LANCE DELGADO		
DIVISION/GROUP	SWING SHIFT	KRIS CRODDY BRYCE THOMAS	
Branch	III		
BRANCH DIRECTOR	MARC CRAIN; CHRIS LUNDGREN (T)		
DIVISION/GROUP	IA	GREGG BUCKALEW ARTURO GASDIK (T)	
DIVISION/GROUP	J/K/L	JASON FORTHOFFER	
DIVISION/GROUP	M	DAVID SMITH JASON LAGO (T)	
DIVISION/GROUP	N	KAREN SCHOLL CHRIS RANKIN (T)	
DIVISION/GROUP	O	SHAWN ALEXANDER MICHAEL GUE (T)	
DIVISION/GROUP	STRUCTURE PROTECTION	RANDY JONES	
DIVISION/GROUP	STAGING	ADAM DUMMER	
Branch	IV		
BRANCH DIRECTOR	STEVE MILLER		
DIVISION/GROUP	A	TOM TALBOT JEFF BOSTWICK (T)	
8. Finance/Administration Section:			
		CHIEF	BETTY PALMIOTTO
		DEPUTY	DAWN CROUCH (T)
		PROCUREMENT UNIT	TOMMY PRICE
		CONTRACTING OFFICER	
		EQUIPMENT TIME RECORDER	DOUG CHASSEREAU SONYA YARA, RANDY TOTTEN (T)
		COST UNIT	ROBERT JESSELL VICKI WILSON
		TIME UNIT	MARCI GLOVER
		PERSONNEL TIME RECORDER	MARTHA MILLER, LINDA STARLING BECKY HOPKINS, TRISH KITSMILLER, SARA RANDOLPH (T)
		COMPENSATION UNIT	BRETT STEFFEN
9. Prepared By: Name: SHAUN STEWART Position/Title: RESL Signature:			
ICS 203	IAP Page	Date/Time: 05/23/2017 1128	



To: All Incident Personnel, West Mims Fire 2017

As the Unified Command Incident Commanders, we have a policy of “zero tolerance” of inappropriate behavior during incident operations. Any form of harassment, discriminatory practices, or disrespectful behavior will not be tolerated. Known or reported acts will be dealt with appropriately.

We are particularly concerned about the perception that alcohol has a place in any of the Incident facilities. It is not appropriate to indulge in alcoholic beverages during any fire assignment.

The National Team from the Southern Region has a policy of “NO ALCOHOL” from the time of dispatch until the time of physical release from the Incident. Members of the Team voluntarily comply with this policy; all incident personnel will be expected to do so also.

We endorse, support, and expect an attitude of mutual respect for all Incident personnel and the public we serve. We also, endorse the attitude and work ethic that places “Safety First, every time on every Incident.” We expect nothing less.

<p>/s/ Keith Mousel /s/ Mike Quesinberry Incident Commanders</p>
--



Fire Weather Forecast



FORECAST NO: 47
PREDICTION FOR: Wednesday
SHIFT DATE: May 24, 2017
FORECAST ISSUED: 1800 May 23, 2017

NAME OF FIRE: West Mims Fire
UNIT: Okefenokee National Wildlife Refuge
Incident Meteorologist: Joe Goudsward 240-778-5279

Widespread showers and thunderstorms expected today and tonight.

DISCUSSION:

A strong storm system will continue to make its way across the region today and tonight. As the system passes, several waves of heavy rain are expected. The atmosphere is very moist and unstable and several of the storms will be strong to possibly severe, especially during the afternoon. In this environment, strong gusty winds, lightning and heavy rain is possible with any thunderstorm. Breezy conditions are still expected outside of thunderstorm activity. Much drier conditions return Thursday and beyond. Breezy conditions will continue Thursday.

WEDNESDAY:

- WEATHER: Cloudy. Showers and thunderstorms likely. Some storms may be strong with gusty winds and locally heavy rain.
- WIND (20 FT): SW 12 to 20 mph with gusts near 25 mph.
- MAX TEMPERATURES: 80-85
- LAL: 4
- MIXING HEIGHT: 3200
- CHANCE RAIN: 90%
- RAINFALL: 1.00" to 1.50"
- MIN RH: 59-64%
- DISPERSION (MAX): 70
- TRANSPORT WINDS: SW 40 mph

WEDNESDAY NIGHT:

- WEATHER: Showers and Thunderstorms likely in the evening, precipitation chances decreasing towards morning. Gusty SW winds will continue through the night.
- WIND (20 FT): SW 10 to 15 mph with gusts near 20 mph, decreasing towards morning.
- MIN TEMPERATURES: 60 to 65
- LAL: 3
- MAX RH: 95-100%
- CHANCE OF RAIN: 90% early
- MAX LVORI: 10
- RAINFALL: .50 to .75"

HOURLY WEATHER FORECAST (LST) Wednesday 1000 through Thursday 0800

Time	1000	1200	1400	1600	1800	2000	2200	2400	0200	0400	0600	0800
Temp °F	77	80	82	82	80	74	68	66	64	62	61	63
RH %	85	77	67	63	72	84	95	100	100	100	100	90
Wind Dir	SW	SW	SW	SW	SW	SW	SW	SW	SW	SW	SW	W
Wind Spd mph	10	12	15	12	12	12	12	10	9	9	8	8
Wind Gst mph	15	20	22	22	20	18	18	14	12			
Rain Chance%	60	80	90	80	70	60	60	50	40	40	30	30
Weather	Tstms	Tstms	Tstms	Tstms	Tstms	Tstms	Tstms	Tstrms	Tstms	Tstms	Shwrs	Shwrs

THURSDAY:

- WEATHER: Mostly cloudy early with a chance of showers and isolated thunderstorms. Becoming partly sunny. Breezy with winds turning to the west.
- WIND (20 FT): Becoming West 10 to 15 mph with gusts near 20 mph.
- MAX TEMPERATURES: 81-86
- LAL: 2 early
- MIXING HEIGHT: 3200
- MIN RH: 57-62%
- CHANCE RAIN: 30% early
- RAINFALL: <.10
- DISPERSION (MAX): 50
- TRANSPORT WINDS: SW 30 mph

Sunrise Tuesday: 6:32 am **Sunset Tuesday: 8:22 pm** **Sunrise Wednesday: 6:31 am**
Thunderstorms imply gusty and erratic winds, locally heavy rain and lightning

RAWS Observations:

Jones
Island



Eddy
Tower



OKE
East



OKE
NW



FIRE BEHAVIOR FORECAST

FORECAST NUMBER: #37	TYPE OF FIRE: Wildland
FIRE NAME: West Mims	OPERATIONAL PERIOD: 05/24/2017 Day Operational Period
DATE ISSUED: 05/23/2017	TIME ISSUED: 1800
UNIT: Okefenokee National Wildlife Refuge	WRITTEN: Signed: Brad Smith FBAN 470-366-6313

FUEL ASSUMPTIONS: The major fuel types found in the West Mims Fire are fuel model SH3 (Brush), fuel model 7 (Southern Rough) and fuel model 8 (Timber litter). High risk fuels (those that will support active crown fire) include pine plantations with a palmetto/gallberry brush understory (FM7). Live canopy fuel moistures in pine and brush are below average and will support active crown fire when critical fire weather and above average fuel dryness is present. Current fuel dryness, as represented by KBDI and ERC G, has been above average between the 75th and 90th percentiles but is currently dropping with the ongoing rain event. Fuel dryness will drop to near normal with the current and forecast rainfall. Calculated 1 hour fine dead fuel moisture: 25% 10 hour fuel moisture: 25% 100 hour fuel moisture: 18%

WEATHER SUMMARY: Rain and thunderstorms off and on through the day

WIND (20 FT): SW 15 mph with gusts to 25 in the afternoon.
 MAX TEMPERATURES: 82 MIN RH: 60%
 LAL: 4 CHANCE OF RAIN: 80% AMOUNT: .50" to 1.50" MAX DISPERSION:70
 MIXING HEIGHT:3000 TRANSPORT WINDS: SSW 30 mph

General observed fire behavior prior to rain: Drought conditions exist across the fire area. Fire will easily transition from surface into the canopy when ladder fuels are present; Expect long range spotting from active crown fire. A fires resistance to control increases when one or more of the fire behavior thresholds are exceeded and fuel dryness is above average. Increased fire intensity, higher rate of spread and higher crown fire potential are possible when these thresholds are exceeded.

Critical fire behavior thresholds when fuels are dry:
 Temp >90°, RH < 40%, Dispersion index greater than 60

Specific: All Branches: Surface fuels will be wet from rain. Surface spread is unlikely. Heat will retreat to heavy dead fuels in piles or in stumps and root systems. Heat will also retreat and hibernate in the organic or muck fuels found in bays and swamps. Ignitions are unlikely with a probability of ignition of 5%.

Fuel Type	Rates of Spread	Flame Length	Max Spot Distance	Probability of Ignition	Torching / Crowning Potential / Flame Lengths
20' winds @ 8 and 12mph					
Southern Rough(pine w/palmetto/gallberry)	1 ch/hr.	1 feet	0 feet	5%	No torching potential
Timber Litter (pine litter reburn)	< 1 ch/hr.	<1 feet	0 feet	5%	No torching potential
Brush (Swamp)	<1 ch/hr.	<1 feet	0 mile	5%	No torching potential

AIR OPERATIONS: Rain and thunderstorms likely through the day

FIRE BEHAVIOR SAFETY: Wet soils and fire weakened root systems could contribute to trees falling in thunderstorm winds.

Reference: 1 chain = 66 feet, 20 chains = .25 mile, 40 chains = .50 mile, 60 chains = .75 mile, 80 chains = 1 Mile

IA Protocol

- Determine LAT/LONG.
- Notify OSC and/or OPBD.
- OSC/OPBD will notify Unified IC's for approval to assist with ground or aviation resources.

In Georgia:

Southern Response Dispatch (229) 386-3846

If no contact-Buck Kline (912) 678-2694

In Florida-

Lake City (Baker, Columbia, and Hamilton Counties):
(386) 243-6243

Jacksonville (Nassau County): (904) 266-8351

If no contact-Rick Dolan (352) 353-5101

Osceola National Forest-Any starts south of Florida State Highway 2 under USFS jurisdiction are the responsibility of the Osceola NF. Contact Tallahassee Dispatch at 850-523-8600 or Forest Duty Officer Drew Page at 850-523-8600. Tractor plow units should not engage (unless life or property is threatened) before contact with Osceola NF (Chris Lydick at 850-264-3209 or Scott Hussey at 352-215-5722).

For OKR-

Brantley Boatright Dispatch (912) 496-7366 x 230
or (912) 276-0023

Division/Group Assignment List (ICS 204 WF)

1. Incident Name:			3.			
WEST MIMS			Branch:		Division/Group:	
2. Operational Period: DAY SHIFT 0730-1930			I		B	
Date/Time From: 05/24/2017 0730 WED		Date/Time To: 05/24/2017 1930 WED				
4. Operations Personnel						
PLANNING OPERATIONS CHIEF		TRENT INGRAM PHIL DANIELS (T)		OPERATIONS CHIEF		RICK DOLAN BUCK KLINE
BRANCH DIRECTOR		RON GARCIA		DIVISION/GROUP SUPERVISOR		RON CALHOUN KEITH FIELDS (T)
SAFETY		LARRY GRUBBS CLAY STEPHENS (T)		AIR TACTICAL GROUP SUPERVISOR		MARK NUNEZ KEN MCLAUGHLIN
5. Resources Assigned this Period						
Strike Team / Task Force / Resource Designator		LWD	Leader	Number Persons	Drop Off PT./Time	Pick Up PT./Time
STEN O-605		05/29	COURTNEY WENZEL	1	ICP/0730	ICP/1930
ENG6 NM-SNF - JEMEZ RD - 631 E-763		05/29	KARL KEEMAN	6	ICP/0730	ICP/1930
ENG6 AR-OZF - PH - E-641 E-76		05/29	MICHAEL W KOCH	3	ICP/0730	ICP/1930
ENG6 UT-FIF - ENG 612 E-843		06/11	JARAD TEEPLES	8	ICP/0730	ICP/1930
WTS1 WILDLANDS FIRE SERVICE E-132		05/31	CARSON SWEENEY	1	ICP/0730	ICP/1930
STEQ O-656		05/31	KEN COOPER	1	ICP/0730	ICP/1930
TPL4 - UNIT #8191 - HUNTSVILLE E-570		05/25	CROCKETT PEGODA	2	ICP/0730	ICP/1930
TPL4 TX FOREST SERVICE TRACTOR PLOW E-471		05/25	TIMOTHY GILL	2	ICP/0730	ICP/1930
TPL4 - UNIT #6192 - NEW BOSTON E-467		05/25	LEE ANDERSEN	2	ICP/0730	ICP/1930
TPL4 - UNIT #7292 - JACKSONVILLE E-571		05/26	JACOB CROWLEY	2	ICP/0730	ICP/1930
STEQ O-565		05/31	ALBERT POTTS	1	ICP/0730	ICP/1930
TPL4 GFC 3285 E-824		05/31	TERRY K HEARD	1	ICP/0730	ICP/1930
TPL4 GFC 3212 E-825		05/31	BRUCE E FREE	1	ICP/0730	ICP/1930
TPL4 GFC 2230 E-826		05/31	CHRISTOPHER SCOTT BRANNEN		ICP/0730	ICP/1930
8. Division/Group Communication Summary						
Function	Channel	RX Frequency N/W	RX Tone/NAC	TX Frequency N/W	TX Tone/NAC	Mode
AIR TO GROUND	4	169.2000N	NONE	169.2000N	NONE	A
COMMAND	8	159.2700N	156.7	151.1000N	123.0	A
TACTICAL	13	159.4125N	NONE	159.4125N	NONE	A
AIR TO GROUND	14	166.6750N	NONE	166.6750N	NONE	A
AIR TO GROUND	15	169.1500N	NONE	169.1500N	NONE	A
AIR GUARD	16	168.6250N	NONE	168.6250N	110.9	A
9. Prepared By (Resource Unit Leader)			Approved By (Planning Section Chief)		Date	Time
SHAUN STEWART			DUANE DURGEE		05/23/2017	1128

Division/Group Assignment List (ICS 204 WF)

1. Incident Name:			3.			
WEST MIMS			Branch:		Division/Group:	
2. Operational Period: DAY SHIFT 0730-1930			I		B	
Date/Time From: 05/24/2017 0730 WED		Date/Time To: 05/24/2017 1930 WED				
4. Operations Personnel						
PLANNING OPERATIONS CHIEF		TRENT INGRAM PHIL DANIELS (T)		OPERATIONS CHIEF		RICK DOLAN BUCK KLINE
BRANCH DIRECTOR		RON GARCIA		DIVISION/GROUP SUPERVISOR		RON CALHOUN KEITH FIELDS (T)
SAFETY		LARRY GRUBBS CLAY STEPHENS (T)		AIR TACTICAL GROUP SUPERVISOR		MARK NUNEZ KEN MCLAUGHLIN
6. Control Operations/Work Assignments:						
Task						
<ul style="list-style-type: none"> • Patrol and mop up fuels appropriate to fuel type and anticipated weather and fire behavior. • Respond to any new starts within the division. 						
Purpose						
<ul style="list-style-type: none"> • Keep fire north of GA 94/FL 2. 						
End State						
<ul style="list-style-type: none"> • Fire is contained by adequate control line to reduce threat to escape; minimizing damage to private timberlands, private lands, and other resource values at risk. 						
7. Special Instructions:						
Ensure LCES is in place before operations begin and stay hydrated. Drive defensively and with lights on at all times. Identify escape routes.						
Use caution when working around logging operations.						
For IA protocol see page 7						
Medical Emergency Channel: Command ETA for Ambulance to Scene: Air: 20 – 30 mins Ground: 10 - 15 mins Paved roads only. IWI – IC or approved person will use Channel 16 (Air Guard) for contact with air ambulance Air Ambulance landing zone to be determined by IWI – IC Utilize engines to provide dust abatement, as needed, prior to air ambulance landing						
8. Division/Group Communication Summary						
Function	Channel	RX Frequency N/W	RX Tone/NAC	TX Frequency N/W	TX Tone/NAC	Mode
AIR TO GROUND	4	169.2000N	NONE	169.2000N	NONE	A
COMMAND	8	159.2700N	156.7	151.1000N	123.0	A
TACTICAL	13	159.4125N	NONE	159.4125N	NONE	A
AIR TO GROUND	14	166.6750N	NONE	166.6750N	NONE	A
AIR TO GROUND	15	169.1500N	NONE	169.1500N	NONE	A
AIR GUARD	16	168.6250N	NONE	168.6250N	110.9	A
9. Prepared By (Resource Unit Leader)			Approved By (Planning Section Chief)		Date	Time
SHAUN STEWART			DUANE DURGEE		05/23/2017	1128

Division/Group Assignment List (ICS 204 WF)

1. Incident Name:			3.			
WEST MIMS			Branch:		Division/Group:	
2. Operational Period: DAY SHIFT 0730-1930			I		C	
Date/Time From: 05/24/2017 0730 WED		Date/Time To: 05/24/2017 1930 WED				
4. Operations Personnel						
PLANNING OPERATIONS CHIEF		TRENT INGRAM PHIL DANIELS (T)		OPERATIONS CHIEF		RICK DOLAN BUCK KLINE
BRANCH DIRECTOR		RON GARCIA		DIVISION/GROUP SUPERVISOR		CHRIS ROBERTS PAUL AMUNDSON (T)
SAFETY		LARRY GRUBBS CLAY STEPHENS (T)		AIR TACTICAL GROUP SUPERVISOR		MARK NUNEZ KEN MCLAUGHLIN
5. Resources Assigned this Period						
Strike Team / Task Force / Resource Designator		LWD	Leader	Number Persons	Drop Off PT./Time	Pick Up PT./Time
CREW - T2IA - PATRICK ENVIRONMENTAL, INC. - NCC - 20A C-11		05/29	AUSTIN HERGERT	19	ICP/0730	ICP/1930
ENG4 - NC-NCS - PP-1434 - D3 E-542		06/06	MATT GARNER	2	ICP/0730	ICP/1930
ENG6 - WV-MOF - E-641 E-870		06/02	JARED D STAGGS	3	ICP/0730	ICP/1930
ENG6 AL-ALF SHOAL CREEK - 651 E-78		06/05	SCOTT LAYFIELD	3	ICP/0730	ICP/1930
WTS2 - STRICKLANDS TRACTOR & AUTO E-265		05/28	LUCIUS CORBITT	1	ICP/0730	ICP/1930
WTS2 - SUPPORT TIPTON & YOUNG E-135		05/30	KEN SWAIN	1	ICP/0730	ICP/1930
STEQ O-564		05/26	RANDALL MOSLEY	1	ICP/0730	ICP/1930
TPL2 - GFC3230 E-688		05/27	DAVID MASON	1	ICP/0730	ICP/1930
TPL3 - GFC1536 E-689		05/27	WALTER BIRD	1	ICP/0730	ICP/1930
TPL3 - GFC3186 E-687		05/26	WILLIAM K BRADDDY	1	ICP/0730	ICP/1930
STEQ O-512		05/25	DUKE CAMPBELL	1	ICP/0730	ICP/1930
TPL2 - GFC1074 E-669		05/24	JIMMY ANDERSON	1	ICP/0730	ICP/1930
TPL4 - GFC2672 E-668		05/25	CLIFF LEWIS	1	ICP/0730	ICP/1930
TPL3 - GFC1208 E-670		05/25	MATT DUGGAN		ICP/0730	ICP/1930
8. Division/Group Communication Summary						
Function	Channel	RX Frequency N/W	RX Tone/NAC	TX Frequency N/W	TX Tone/NAC	Mode
AIR TO GROUND	4	169.2000N	NONE	169.2000N	NONE	A
COMMAND	8	159.2700N	156.7	151.1000N	123.0	A
TACTICAL	9	159.2850N	NONE	159.2850N	156.7	A
AIR TO GROUND	14	166.6750N	NONE	166.6750N	NONE	A
AIR TO GROUND	15	169.1500N	NONE	169.1500N	NONE	A
AIR GUARD	16	168.6250N	NONE	168.6250N	110.9	A
9. Prepared By (Resource Unit Leader)			Approved By (Planning Section Chief)		Date	Time
SHAUN STEWART			DUANE DURGEE		05/23/2017	1128

Division/Group Assignment List (ICS 204 WF)

1. Incident Name:			3.			
WEST MIMS			Branch:		Division/Group:	
2. Operational Period: DAY SHIFT 0730-1930			I		C	
Date/Time From: 05/24/2017 0730 WED		Date/Time To: 05/24/2017 1930 WED				
4. Operations Personnel						
PLANNING OPERATIONS CHIEF		TRENT INGRAM PHIL DANIELS (T)		OPERATIONS CHIEF		RICK DOLAN BUCK KLINE
BRANCH DIRECTOR		RON GARCIA		DIVISION/GROUP SUPERVISOR		CHRIS ROBERTS PAUL AMUNDSON (T)
SAFETY		LARRY GRUBBS CLAY STEPHENS (T)		AIR TACTICAL GROUP SUPERVISOR		MARK NUNEZ KEN MCLAUGHLIN
5. Resources Assigned this Period						
Strike Team / Task Force / Resource Designator		LWD	Leader	Number Persons	Drop Off PT./Time	Pick Up PT./Time
TFLD O-717		06/01	MYRON WILLIAMS	1	ICP/0730	ICP/1930
TPL4 - YOKE GFC3254 E-876		06/01	MICHAEL YOKE JR	1	ICP/0730	ICP/1930
TPL4 TOMPKINS GFC3331 E-877		06/01	DAVID TOMPKINS	1	ICP/0730	ICP/1930
TPL5 - DAVIS GFC3219 E-878		06/01	PHILLIP B DAVIS	1	ICP/0730	ICP/1930
TFLD O-597		05/29	CHAD KIDD	1	ICP/0730	ICP/1930
TFLD (T) O-701		05/30	TRAVIS CARSON	1	ICP/0730	ICP/1930
EMPF E-375 470-532-8807		05/24	GARY ALLEN FORD	1	ICP/0730	ICP/1930
SOF2 O-541 470-366-6299		06/11	LOUIE CASAUS	1	ICP/0730	ICP/1930
6. Control Operations/Work Assignments:						
8. Division/Group Communication Summary						
Function	Channel	RX Frequency N/W	RX Tone/NAC	TX Frequency N/W	TX Tone/NAC	Mode
AIR TO GROUND	4	169.2000N	NONE	169.2000N	NONE	A
COMMAND	8	159.2700N	156.7	151.1000N	123.0	A
TACTICAL	9	159.2850N	NONE	159.2850N	156.7	A
AIR TO GROUND	14	166.6750N	NONE	166.6750N	NONE	A
AIR TO GROUND	15	169.1500N	NONE	169.1500N	NONE	A
AIR GUARD	16	168.6250N	NONE	168.6250N	110.9	A
9. Prepared By (Resource Unit Leader)			Approved By (Planning Section Chief)		Date	Time
SHAUN STEWART			DUANE DURGEE		05/23/2017	1128

Division/Group Assignment List (ICS 204 WF)

1. Incident Name:			3.			
WEST MIMS			Branch:		Division/Group:	
2. Operational Period: DAY SHIFT 0730-1930			I		C	
Date/Time From: 05/24/2017 0730	WED	Date/Time To: 05/24/2017 1930	WED			
4. Operations Personnel						
PLANNING OPERATIONS CHIEF		TRENT INGRAM PHIL DANIELS (T)		OPERATIONS CHIEF		
BRANCH DIRECTOR		RON GARCIA		DIVISION/GROUP SUPERVISOR		
SAFETY		LARRY GRUBBS CLAY STEPHENS (T)		AIR TACTICAL GROUP SUPERVISOR		
				RICK DOLAN BUCK KLINE CHRIS ROBERTS PAUL AMUNDSON (T) MARK NUNEZ KEN MCLAUGHLIN		
6. Control Operations/Work Assignments:						
Task						
<ul style="list-style-type: none"> • Patrol and mop up fuels appropriate to fuel type and anticipated weather and fire behavior. • Respond to any new starts within the division. • Create or improve fireline around logging debris in coordination with logging operators. 						
Purpose						
<ul style="list-style-type: none"> • Keep fire east of swamp edge fire break. 						
End State						
<ul style="list-style-type: none"> • Fire is contained by adequate control line to reduce threat to escape; minimizing damage to private timberlands, private lands, and other resource values at risk. 						
7. Special Instructions:						
<p>Ensure LCES is in place before operations begin and stay hydrated. Drive defensively and with lights on at all times. Identify escape routes. Logging operations are continuing. Stay clear of cutting areas. Please be mindful of logging operations that will be ongoing. Ensure that all personnel stay clear of felling operations. Pay attention for potential reburn in logging area. Work with Gilyard Logging foreman on any suppression actions within the logging area.</p> <p>Use caution when working around logging operations.</p> <p><u>For IA protocol see page 7</u></p> <p>Additional Resources: Superior Pine Tractor Plow D6; SP-83, SP-85, SP-87 Medical Emergency Channel: Command ETA for Ambulance to Scene: Air: 20 – 30 mins Ground: 10 - 15 mins Paved roads only. IWI – IC or approved person will use Channel 16 (Air Guard) for contact with air ambulance Air Ambulance landing zone to be determined by IWI – IC Utilize engines to provide dust abatement, as needed, prior to air ambulance landing</p>						
8. Division/Group Communication Summary						
Function	Channel	RX Frequency N/W	RX Tone/NAC	TX Frequency N/W	TX Tone/NAC	Mode
AIR TO GROUND	4	169.2000N	NONE	169.2000N	NONE	A
COMMAND	8	159.2700N	156.7	151.1000N	123.0	A
TACTICAL	9	159.2850N	NONE	159.2850N	156.7	A
AIR TO GROUND	14	166.6750N	NONE	166.6750N	NONE	A
AIR TO GROUND	15	169.1500N	NONE	169.1500N	NONE	A
AIR GUARD	16	168.6250N	NONE	168.6250N	110.9	A
9. Prepared By (Resource Unit Leader)		Approved By (Planning Section Chief)		Date	Time	
SHAUN STEWART		DUANE DURGEE		05/23/2017	1128	

Division/Group Assignment List (ICS 204 WF)

1. Incident Name:			3.			
WEST MIMS			Branch:		Division/Group:	
2. Operational Period: DAY SHIFT 0730-1930			I		D	
Date/Time From: 05/24/2017 0730 WED		Date/Time To: 05/24/2017 1930 WED				
4. Operations Personnel						
PLANNING OPERATIONS CHIEF		TRENT INGRAM PHIL DANIELS (T)		OPERATIONS CHIEF		RICK DOLAN BUCK KLINE
BRANCH DIRECTOR		RON GARCIA		DIVISION/GROUP SUPERVISOR		WALTER BOWERS HEATHER GRIFFIN (T)
SAFETY		LARRY GRUBBS CLAY STEPHENS (T)		AIR TACTICAL GROUP SUPERVISOR		MARK NUNEZ, KEN MCLAUGHLIN
5. Resources Assigned this Period						
Strike Team / Task Force / Resource Designator		LWD	Leader	Number Persons	Drop Off PT./Time	Pick Up PT./Time
TFLD O-548		05/27	PAUL OLTROGGE	1	ICP/0730	ICP/1930
TFLD (T) E-613.3		05/26	CHRIS BROOKS	1	ICP/0730	ICP/1930
DOZ2 OK-OKS ECU #2178 E-503		05/24	WILLIAM OWENS	1	ICP/0730	ICP/1930
DOZ3 WELBORN AQUA HAUL AND FIRE SERVICES, INC. E-514		05/26	JERRY WELBORN	2	ICP/0730	ICP/1930
ENG6 AR-OUF-PCS #691 E-838		05/30	LARRY SHORES	3	ICP/0730	ICP/1930
ENG6 WY-RSD 1602 E-849		05/31	RICHARD HOWE	3	ICP/0730	ICP/1930
TFLD O-596		05/28	ALFRED ALLMAN	1	ICP/0730	ICP/1930
ENG6 FL-FNF-641 E-157		05/28	JUSTIN KNOWLES	3	ICP/0730	ICP/1930
ENG6 WILDLANDS FIRE SERVICE E-262		06/03	CHAD ANDERSON	3	ICP/0730	ICP/1930
TFLD O-649		05/29	RANDY OKON	1	ICP/0730	ICP/1930
ENG6 MES #6198 E-871		06/02	DANIEL PERKINS	3	ICP/0730	ICP/1930
ENG6 AZ-COF-4-87 E-613		05/26	JAMES HOONANIE	3	ICP/0730	ICP/1930
ENG6 AZ-COF-4-86 E-610		05/26	MURRAY ROSENGARTEN	3	ICP/0730	ICP/1930
8. Division/Group Communication Summary						
Function	Channel	RX Frequency N/W	RX Tone/NAC	TX Frequency N/W	TX Tone/NAC	Mode
COMMAND	2	159.1200N	NONE	151.3700N	100.0	A
AIR TO GROUND	4	169.2000N	NONE	169.2000N	NONE	A
TACTICAL	13	159.4125N	NONE	159.4125N	NONE	A
AIR TO GROUND	14	166.6750N	NONE	166.6750N	NONE	A
AIR TO GROUND	15	169.1500N	NONE	169.1500N	NONE	A
AIR GUARD	16	168.6250N	NONE	168.6250N	110.9	A
9. Prepared By (Resource Unit Leader)			Approved By (Planning Section Chief)		Date	Time
SHAUN STEWART			DUANE DURGEE		05/23/2017	1128

Division/Group Assignment List (ICS 204 WF)

1. Incident Name:			3.			
WEST MIMS			Branch:		Division/Group:	
2. Operational Period: DAY SHIFT 0730-1930			I		D	
Date/Time From: 05/24/2017 0730 WED		Date/Time To: 05/24/2017 1930 WED				
4. Operations Personnel						
PLANNING OPERATIONS CHIEF		TRENT INGRAM PHIL DANIELS (T)		OPERATIONS CHIEF		
BRANCH DIRECTOR		RON GARCIA		DIVISION/GROUP SUPERVISOR		
SAFETY		LARRY GRUBBS CLAY STEPHENS (T)		AIR TACTICAL GROUP SUPERVISOR		
				RICK DOLAN BUCK KLINE		
				WALTER BOWERS HEATHER GRIFFIN (T)		
				MARK NUNEZ, KEN MCLAUGHLIN		
5. Resources Assigned this Period						
Strike Team / Task Force / Resource Designator		LWD	Leader	Number Persons	Drop Off PT./Time	Pick Up PT./Time
TFLD O-593		05/29	BRYAN ROSENOW	1	ICP/0730	ICP/1930
DOZ3 KY-KYS 311 - 650J E-510		05/24	JERRY BROWN	2	ICP/0730	ICP/1930
DOZ3 KY-KYS 312 - 650J E-511		05/24	CHRISTOPHER ADAMS	2	ICP/0730	ICP/1930
DOZ1 TX-TXS HUDSON 7699 E-788		05/30	CHAD WILEY	2	ICP/0730	ICP/1930
EMPF E-375		05/24	GARY ALLEN FORD	1	ICP/0730	ICP/1930
SOF2 O-541 470-366-6299		06/11	LOUIE CASAUS	1	ICP/0730	ICP/1930
ENG6 COLQUITT 86 STEPHEN FOSTER E-118		06/05	DEAN WILEY/CHAD PRITCHETT	1		
6. Control Operations/Work Assignments:						
Task						
<ul style="list-style-type: none"> Patrol and mop up fuels appropriate to fuel type and anticipated weather and fire behavior. Respond to any new starts within the division. Monitor fire activity and location in the vicinity of Billies Island. 						
Purpose						
<ul style="list-style-type: none"> Keep fire south of the Suwannee Canal. 						
End State						
<ul style="list-style-type: none"> Fire activity north and west of Billy's Island has been detected and appropriate action has been initiated. Fire is contained by adequate control line to reduce threat to escape; minimizing damage to private timberlands, private lands, and other resource values at risk. 						
8. Division/Group Communication Summary						
Function	Channel	RX Frequency N/W	RX Tone/NAC	TX Frequency N/W	TX Tone/NAC	Mode
COMMAND	2	159.1200N	NONE	151.3700N	100.0	A
AIR TO GROUND	4	169.2000N	NONE	169.2000N	NONE	A
TACTICAL	13	159.4125N	NONE	159.4125N	NONE	A
AIR TO GROUND	14	166.6750N	NONE	166.6750N	NONE	A
AIR TO GROUND	15	169.1500N	NONE	169.1500N	NONE	A
AIR GUARD	16	168.6250N	NONE	168.6250N	110.9	A
9. Prepared By (Resource Unit Leader)			Approved By (Planning Section Chief)		Date	Time
SHAUN STEWART			DUANE DURGEE		05/23/2017	1128

Division/Group Assignment List (ICS 204 WF)

1. Incident Name:			3.			
WEST MIMS			I	D		
2. Operational Period: DAY SHIFT 0730-1930						
Date/Time From:	Date/Time To:					
05/24/2017 0730 WED	05/24/2017 1930 WED					
4. Operations Personnel						
PLANNING OPERATIONS CHIEF	TRENT INGRAM PHIL DANIELS (T)	OPERATIONS CHIEF	RICK DOLAN BUCK KLINE			
BRANCH DIRECTOR	RON GARCIA	DIVISION/GROUP SUPERVISOR	WALTER BOWERS HEATHER GRIFFIN (T)			
SAFETY	LARRY GRUBBS CLAY STEPHENS (T)	AIR TACTICAL GROUP SUPERVISOR	MARK NUNEZ, KEN MCLAUGHLIN			
7. Special Instructions:						
Ensure LCES is in place before operations begin and stay hydrated. Drive defensively and with lights on at all times. Identify escape routes.						
For IA protocol see page 7						
Medical Emergency Channel: Command ETA for Ambulance to Scene: Air: 20 – 30 mins Ground: 10 - 15 mins Paved roads only. IWI – IC or approved person will use Channel 16 (Air Guard) for contact with air ambulance Air Ambulance landing zone to be determined by IWI – IC Utilize engines to provide dust abatement, as needed, prior to air ambulance landing						
8. Division/Group Communication Summary						
Function	Channel	RX Frequency N/W	RX Tone/NAC	TX Frequency N/W	TX Tone/NAC	Mode
COMMAND	2	159.1200N	NONE	151.3700N	100.0	A
AIR TO GROUND	4	169.2000N	NONE	169.2000N	NONE	A
TACTICAL	13	159.4125N	NONE	159.4125N	NONE	A
AIR TO GROUND	14	166.6750N	NONE	166.6750N	NONE	A
AIR TO GROUND	15	169.1500N	NONE	169.1500N	NONE	A
AIR GUARD	16	168.6250N	NONE	168.6250N	110.9	A
9. Prepared By (Resource Unit Leader)		Approved By (Planning Section Chief)		Date	Time	
SHAUN STEWART		DUANE DURGEE		05/23/2017	1128	

Division/Group Assignment List (ICS 204 WF)

1. Incident Name:			3.				
WEST MIMS			I	Branch:		Division/Group:	
2. Operational Period: DAY SHIFT 0730-1930				I		FL FFS CONTINGENCY	
Date/Time From: 05/24/2017 0730 WED		Date/Time To: 05/24/2017 1930 WED					
4. Operations Personnel							
PLANNING OPERATIONS CHEIF		TRENT INGRAM PHIL DANIELS (T)		OPERATIONS CHIEF		RICK DOLAN BUCK KLINE	
BRANCH DIRECTOR		RON GARCIA		DIVISION/GROUP SUPERVISOR		ANDY LAMBORN	
SAFETY		LARRY GRUBBS CLAY STEPHENS (T)		AIR TACTICAL GROUP SUPERVISOR		MARK NUNEZ KEN MCLAUGHLIN	
6. Control Operations/Work Assignments:							
Purpose:							
<ul style="list-style-type: none"> To provide suppression support for incident. 							
Task:							
<ul style="list-style-type: none"> Resources are staged at John Bethea State Forest headquarters. Resources are ready upon calling for IA or extended attack. 							
End State:							
<ul style="list-style-type: none"> Ready support resources to respond to protect structures, timberland and resource values at risk. 							
7. Special Instructions:							
<p>Ensure LCES is in place before operations begin. Drive defensively and with lights on at all times. Assure common communication per IAP Comm Plan is established before engagement.</p> <p>Medical Emergency Channel: Command ETA for Ambulance to Scene: Air: 20 – 30 mins Ground: 10 - 15 mins Paved roads only. IWI – IC or approved person will use Channel 16 (Air Guard) for contact with air ambulance Air Ambulance landing zone to be determined by IWI – IC Utilize engines to provide dust abatement, as needed, prior to air ambulance landing</p> <p>Contact Rick Dolan, FL FSS Unified IC 352-222-4420 when activating contingency resources.</p> <p>For IA protocol see page 7</p>							
8. Division/Group Communication Summary							
Function	Channel	RX Frequency N/W	RX Tone/NAC	TX Frequency N/W	TX Tone/NAC	Mode	
COMMAND	2	159.1200N	NONE	151.3700N	100.0	A	
AIR TO GROUND	4	169.2000N	NONE	169.2000N	NONE	A	
TACTICAL	6	159.3900N	NONE	159.3900N	156.7	A	
AIR TO GROUND	14	166.6750N	NONE	166.6750N	NONE	A	
AIR TO GROUND	15	169.1500N	NONE	169.1500N	NONE	A	
AIR GUARD	16	168.6250N	NONE	168.6250N	110.9	A	
9. Prepared By (Resource Unit Leader)			Approved By (Planning Section Chief)		Date	Time	
SHAUN STEWART			DUANE DURGEE		05/23/2017	1128	

Division/Group Assignment List (ICS 204 WF)

1. Incident Name:				3.			
WEST MIMS				I		Division/Group: ROAD MAINTENANCE	
2. Operational Period: DAY SHIFT 0730-1930							
Date/Time From: 05/24/2017 0730		Date/Time To: 05/24/2017 1930					
WED		WED					
4. Operations Personnel							
OPERATIONS CHIEF		RICK DOLAN BUCK KLINE		THSP ROADS			
BRANCH DIRECTOR		RON GARCIA		DIVISION/GROUP SUPERVISOR		CANDICE KUTROSKY, CHRIS CHAD STOVER (T), CASEY OCONNER	
SAFETY		LARRY GRUBBS CLAY STEPHENS (T)		AIR TACTICAL GROUP SUPERVISOR		MARK NUNEZ KEN MCLAUGHLIN	
5. Resources Assigned this Period							
Strike Team / Task Force / Resource Designator		LWD	Leader	Number Persons	Drop Off PT./Time	Pick Up PT./Time	
CLAY GROUP							
HEQB O-665		05/30	BOB LITTLE	1	EAST CAMP/0730	EAST CAMP/1930	
EXCA (ANY TYPE) - VIN# 500242 E-626		05/30	ALEX CORNEILIUS	1	EAST CAMP/0730	EAST CAMP/1930	
TDMP - VIN# 54083 E-624		05/28	ALEX CORNEIL	2	EAST CAMP/0730	EAST CAMP/1930	
TDMP - VIN# 64094 E-625		05/30	WILLIAM DICKERSON	2	EAST CAMP/0730	EAST CAMP/1930	
TDMP - CORNELIUS FARMS # 17006 E-879		05/31	EDGAR DIXON	1	EAST CAMP/0730	EAST CAMP/1930	
TDMP - CORNELIUS FARMS #633987 E-880		05/31	SAMMY HENDRIX	1	EAST CAMP/0730	EAST CAMP/1930	
TDMP - CORNELIUS FARMS E-937		06/04	DAVID GARNER	1	EAST CAMP/0730	EAST CAMP/1930	
TDMP - CORNELIUS FARMS E-938		06/04	JOE JOHNSON	1	EAST CAMP/0730	EAST CAMP/1930	
TDMP - CORNELIUS FARMS E-939		06/04	RONALD NUTTY	1	EAST CAMP/0730	EAST CAMP/1930	
TDMP - CORNELIUS FARMS E-940		06/04	EDDIE JOHNSON	1	EAST CAMP/0730	EAST CAMP/1930	
8. Division/Group Communication Summary							
Function	Channel	RX Frequency N/W	RX Tone/NAC	TX Frequency N/W	TX Tone/NAC	Mode	
COMMAND	2	159.1200N	NONE	151.3700N	100.0	A	
AIR TO GROUND	4	169.2000N	NONE	169.2000N	NONE	A	
TACTICAL	6	159.3900N	NONE	159.3900N	156.7	A	
AIR TO GROUND	14	166.6750N	NONE	166.6750N	NONE	A	
AIR TO GROUND	15	169.1500N	NONE	169.1500N	NONE	A	
AIR GUARD	16	168.6250N	NONE	168.6250N	110.9	A	
9. Prepared By (Resource Unit Leader)			Approved By (Planning Section Chief)			Date	Time
SHAUN STEWART			DUANE DURGEE			05/23/2017	1128

Division/Group Assignment List (ICS 204 WF)

1. Incident Name:				3.					
WEST MIMS				I		Branch:		Division/Group:	
2. Operational Period: DAY SHIFT 0730-1930						ROAD MAINTENANCE			
Date/Time From: 05/24/2017 0730 WED		Date/Time To: 05/24/2017 1930 WED							
4. Operations Personnel									
OPERATIONS CHIEF		RICK DOLAN BUCK KLINE		THSP ROADS					
BRANCH DIRECTOR		RON GARCIA		DIVISION/GROUP SUPERVISOR		CANDICE KUTROSKY, CHRIS CHAD STOVER (T), CASEY OCONNER			
SAFETY		LARRY GRUBBS CLAY STEPHENS (T)		AIR TACTICAL GROUP SUPERVISOR		MARK NUNEZ KEN MCLAUGHLIN			
5. Resources Assigned this Period									
Strike Team / Task Force / Resource Designator		LWD	Leader	Number Persons	Drop Off PT./Time	Pick Up PT./Time			
WEST GROUP									
STEQ O-603		05/28	JAMES LICO	1	EAST CAMP/0730	EAST CAMP/1930			
WTS2 - VIN# 26825 E-408		05/28	RICHARD PETERS	1	EAST CAMP/0730	EAST CAMP/1930			
HEQB O-688		05/31	GENE PHILLIPS	1	EAST CAMP/0730	EAST CAMP/1930			
HEQB O-647		05/30	BRANDON CREECH	1	EAST CAMP/0730	EAST CAMP/1930			
HEQB O-687		05/31	RUDY MEDRANO	1	EAST CAMP/0730	EAST CAMP/1930			
HEQB O-645		05/29	JONATHAN MCDUFFEY	1	EAST CAMP/0730	EAST CAMP/1930			
HEQB O-631		06/03	SCOTT BURGHARDT	1	EAST CAMP/0730	EAST CAMP/1930			
SOF2 O-492		05/25	TIMOTHY OLIVERIUS	1	EAST CAMP/0730	EAST CAMP/1930			
TPL2 - TIPTON & YOUNG CONSTRUCTION COMPAN E-509		05/23			EAST CAMP/0730	EAST CAMP/1930			
DOZ2 - TIPTON & YOUNG CONSTRUCTION COMPANY INC - E-506		05/23	ETHAN TIPTON	2	EAST CAMP/0730	EAST CAMP/1930			
TFLD O-383		05/28	HAROLD KIBBE	1	EAST CAMP/0730	EAST CAMP/1930			
GRD2 - MOORE'S QUALITY EARTHMOVING, INC E-641		05/29	ERIC MOORE	2	EAST CAMP/0730	EAST CAMP/1930			
GRD1 - VIN# 625863 E-866		06/01	BRIAN JENKINS	1	EAST CAMP/0730	EAST CAMP/1930			
WT2 TIPTON & YOUNG CONST E-340		06/04	DEVIN MCHZLEY	1	EAST CAMP/0730	EAST CAMP/1930			
8. Division/Group Communication Summary									
Function	Channel	RX Frequency N/W	RX Tone/NAC	TX Frequency N/W	TX Tone/NAC	Mode			
COMMAND	2	159.1200N	NONE	151.3700N	100.0	A			
AIR TO GROUND	4	169.2000N	NONE	169.2000N	NONE	A			
TACTICAL	6	159.3900N	NONE	159.3900N	156.7	A			
AIR TO GROUND	14	166.6750N	NONE	166.6750N	NONE	A			
AIR TO GROUND	15	169.1500N	NONE	169.1500N	NONE	A			
AIR GUARD	16	168.6250N	NONE	168.6250N	110.9	A			
9. Prepared By (Resource Unit Leader)			Approved By (Planning Section Chief)			Date		Time	
SHAUN STEWART			DUANE DURGEE			05/23/2017		1128	

Division/Group Assignment List (ICS 204 WF)

1. Incident Name:			3.				
WEST MIMS			I	Branch:		Division/Group:	
2. Operational Period: DAY SHIFT 0730-1930				ROAD MAINTENANCE			
Date/Time From: 05/24/2017 0730 WED		Date/Time To: 05/24/2017 1930 WED					
4. Operations Personnel							
OPERATIONS CHIEF		RICK DOLAN BUCK KLINE		THSP ROADS			
BRANCH DIRECTOR		RON GARCIA		DIVISION/GROUP SUPERVISOR		CANDICE KUTROSKY, CHRIS CHAD STOVER (T), CASEY OCONNER	
SAFETY		LARRY GRUBBS CLAY STEPHENS (T)		AIR TACTICAL GROUP SUPERVISOR		MARK NUNEZ KEN MCLAUGHLIN	
6. Control Operations/Work Assignments:							
Task							
<ul style="list-style-type: none"> • Assess access roads to fire perimeter; repair or maintain as necessary in accordance with priority list provided by Operations Section Chief. • Provide adequate signage for traffic safety. • Assess single lane bridges and culverts for safety and maintenance needs. 							
Purpose							
<ul style="list-style-type: none"> • To keep adequate vehicular access to the fire perimeter. 							
End State							
<ul style="list-style-type: none"> • Access roads are in a safe and travel worthy condition. • 							
7. Special Instructions:							
Check in and out with Division Supervisor when moving between divisions.							
Medical Emergency Channel: Command ETA for Ambulance to Scene: Air: 20 – 30 mins Ground: 10 - 15 mins Paved roads only. IWI – IC or approved person will use Channel 16 (Air Guard) for contact with air ambulance Air Ambulance landing zone to be determined by IWI – IC Utilize engines to provide dust abatement, as needed, prior to air ambulance landing							
For IA protocol see page 7							
8. Division/Group Communication Summary							
Function	Channel	RX Frequency N/W	RX Tone/NAC	TX Frequency N/W	TX Tone/NAC	Mode	
COMMAND	2	159.1200N	NONE	151.3700N	100.0	A	
AIR TO GROUND	4	169.2000N	NONE	169.2000N	NONE	A	
TACTICAL	6	159.3900N	NONE	159.3900N	156.7	A	
AIR TO GROUND	14	166.6750N	NONE	166.6750N	NONE	A	
AIR TO GROUND	15	169.1500N	NONE	169.1500N	NONE	A	
AIR GUARD	16	168.6250N	NONE	168.6250N	110.9	A	
9. Prepared By (Resource Unit Leader)			Approved By (Planning Section Chief)		Date	Time	
SHAUN STEWART			DUANE DURGEE		05/23/2017	1128	

Division/Group Assignment List (ICS 204 WF)

1. Incident Name:			3.			
WEST MIMS			Branch:		Division/Group:	
2. Operational Period: SWING SHIFT 1400 - 0200			I, III, IV		SWING SHIFT	
Date/Time From: 05/24/2017 1400 WED		Date/Time To: 05/25/2017 0200 THU				
4. Operations Personnel						
PLANNING OPERATIONS CHIEF		STEVE WEAVER, MARC CRAIN J.BRAND (T), M.DAVIS (T), P.DANIELS		OPERATIONS CHIEF		RICK DOLAN
BRANCH DIRECTOR		LANCE DELGADO		DIVISION/GROUP SUPERVISOR		BRYCE THOMAS
SAFETY		LARRY GRUBBS CLAY STEPHENS (T)		AIR TACTICAL SUPERVISOR		MARK NUNEZ KEN MCLAUGHLIN
5. Resources Assigned this Period						
Strike Team / Task Force / Resource Designator		LWD	Leader	Number Persons	Drop Off PT./Time	Pick Up PT./Time
TFLD CRODDY O-618		05/29	KRIS CRODDY	1	DP 10/1800	DP 10/0200
TFLD (T) O-671		05/30	JAMES E BARBERI (T)	1	DP 10/1800	DP 10/0200
ENG6 - KY-KYS - 410 E-661		05/26	KEVIN RADSCHWEIT	2	DP 10/1800	DP 10/0200
ENG6 - KY-KYS - 110 E-658		05/26	DENNIS W WOOLARD	2	DP 10/1800	DP 10/0200
ENG6 - NC-NCF E-691 E-255		05/27	CODY TROUT THOMAS	3	DP 10/1800	DP 10/0200
ENGINE - T6 - 5670 E-726		05/27	BRANDON RAMIREZ	2	DP 10/1800	DP 10/0200
TFLD O-654		05/30	JOSH CANTRELL	1	DP 10/1800	DP 10/0200
ENG6 - KY-KYS - 111 E-659		05/25	STEPHEN HAMMOND	2	DP 10/1800	DP 10/0200
ENG6 - KY-KYS - 310 E-660		05/25	ADAM R MCGUIRE	2	DP 10/1800	DP 10/0200
ENG6 - STONEWALL FPD - ENGINE 435 E-772		05/28	KEVIN YEATTS	3	DP 10/1800	DP 10/0200
ENG6 - IN ENGINE - 5671 E-727		05/26	MIKE GRISMER	2	DP 10/1800	DP 10/0200
TFLD O-520		05/24	ROBERT LAENG	1	DP 10/1800	DP 10/0200
ENG6 - UNIT #9663 - SMITHVILLE TF6 E-259		05/26	COLTON CURLES	3	DP 10/1800	DP 10/0200
8. Division/Group Communication Summary						
Function	Channel	RX Frequency N/W	RX Tone/NAC	TX Frequency N/W	TX Tone/NAC	Mode
COMMAND	3	159.1200N	NONE	151.3700N	82.5	A
AIR TO GROUND	4	169.2000N	NONE	169.2000N	NONE	A
COMMAND	8	159.2700N	156.7	151.1000N	123.0	A
TACTICAL	12	159.4425N	NONE	159.4425N	NONE	A
AIR TO GROUND	14	166.6750N	NONE	166.6750N	NONE	A
AIR TO GROUND	15	169.1500N	NONE	169.1500N	NONE	A
AIR GUARD	16	168.6250N	NONE	168.6250N	110.9	A
9. Prepared By (Resource Unit Leader)			Approved By (Planning Section Chief)		Date	Time
SHAUN STEWART			DUANE DURGEE		05/23/2017	2000

Division/Group Assignment List (ICS 204 WF)

1. Incident Name:			3.			
WEST MIMS			Branch:		Division/Group:	
2. Operational Period:			I, III, IV		SWING SHIFT	
Date/Time From: 05/24/2017 1400 WED			Date/Time To: 05/25/2017 0200 THU			
4. Operations Personnel						
PLANNING OPERATIONS CHIEF		STEVE WEAVER, MARC CRAIN J.BRAND (T), M.DAVIS (T), P.DANIELS		OPERATIONS CHIEF		RICK DOLAN
BRANCH DIRECTOR		LANCE DELGADO		DIVISION/GROUP SUPERVISOR		BRYCE THOMAS
SAFETY		LARRY GRUBBS CLAY STEPHENS (T)		AIR TACTICAL SUPERVISOR		MARK NUNEZ KEN MCLAUGHLIN
5. Resources Assigned this Period						
Strike Team / Task Force / Resource Designator		LWD	Leader	Number Persons	Drop Off PT./Time	Pick Up PT./Time
ENG 6 - NMN6S - ENG 61 E-611		05/25	MICHAEL BALIZAN	3	DP 10/1800	DP 10/0200
ENG6 - NMN4S - LAS VEGAS STATE FORESTRY E-606		05/26	CODY ALCON	3	DP 10/1800	DP 10/0200
ENG6 - NMN4S - LAS VEGAS STATE FORESTRY E-605		05/26	JARROD DURAN	3	DP 10/1800	DP 10/0200
TFLD O-594		05/29	MICHAEL SMITH	1	DP 10/1800	DP 10/0200
ENG6 - FIRE MNGMT SER 351086 E-286		05/30	STEVE NAJJAR	3	DP 10/1800	DP 10/0200
ENG6 GLENWOOD 632 E-796		05/28	CODY RUSSELL	4	DP 10/1800	DP 10/0200
ENG6 - FOUNTAIN FIRE - 243 E-770		05/28	JAMES ORTA	3	DP 10/1800	DP 10/0200
WTS2 -AZ-DSY #146 E-643		05/30	RANDY KENNEDY	1	DP 10/1800	DP 10/0200
ENG6 - STH ARK 112 E-773		05/28	MELISSA FRIESS	3	DP10/1800	DP 10/0200
STEQ O-563		05/26	DANIEL GORE	1	DP 10/1800	DP 10/0200
TPL3 - GFC3195 E-684		05/25	MATTHEW DEAN WILSON	1	DP 10/1800	DP 10/0200
TPL4 - GFC3201 E-685		05/26	BILLY BROWN	1	DP 10/1800	DP 10/0200
8. Division/Group Communication Summary						
Function	Channel	RX Frequency N/W	RX Tone/NAC	TX Frequency N/W	TX Tone/NAC	Mode
COMMAND	3	159.1200N	NONE	151.3700N	82.5	A
AIR TO GROUND	4	169.2000N	NONE	169.2000N	NONE	A
COMMAND	8	159.2700N	156.7	151.1000N	123.0	A
TACTICAL	12	159.4425N	NONE	159.4425N	NONE	A
AIR TO GROUND	14	166.6750N	NONE	166.6750N	NONE	A
AIR TO GROUND	15	169.1500N	NONE	169.1500N	NONE	A
AIR GUARD	16	168.6250N	NONE	168.6250N	110.9	A
9. Prepared By (Resource Unit Leader)			Approved By (Planning Section Chief)		Date	Time
SHAUN STEWART			DUANE DURGEE		05/23/2017	2000

Division/Group Assignment List (ICS 204 WF)

1. Incident Name:			3.			
WEST MIMS			Branch:		Division/Group:	
2. Operational Period: SWING SHIFT 1400 - 0200			I, III, IV		SWING SHIFT	
Date/Time From: 05/24/2017 1400 WED		Date/Time To: 05/25/2017 0200 THU				
4. Operations Personnel						
PLANNING OPERATIONS CHIEF		STEVE WEAVER, MARC CRAIN J.BRAND (T), M.DAVIS (T), P.DANIELS		OPERATIONS CHIEF		RICK DOLAN
BRANCH DIRECTOR		LANCE DELGADO		DIVISION/GROUP SUPERVISOR		BRYCE THOMAS
SAFETY		LARRY GRUBBS CLAY STEPHENS (T)		AIR TACTICAL SUPERVISOR		MARK NUNEZ KEN MCLAUGHLIN
5. Resources Assigned this Period						
Strike Team / Task Force / Resource Designator		LWD	Leader	Number Persons	Drop Off PT./Time	Pick Up PT./Time
TPL4 - GFC1029 E-686		05/26	JUSTIN KEITH JORDAN	1	DP 10/1800	DP 10/0200
TPL4 - SMR #4441 E-508		05/28	TRAVIS POLLARD	1	DP 10/1800	DP 10/0200
EMPF E-352		05/22	KATHY NEMMERS	1	DP 10/1800	DP 10/0200
EMPF E-315.2		05/28	ALYSE GUTIERREZ	1		
EMPF E-316.2		05/29	STEVE WOLFSTICH	1	DP 10/1800	DP 10/0200
EMPF O-388		05/22	KYLE PORT	1	DP 10/1800	DP 10/0200
SOF2 O-589		05/26	GALEN YOUNG	1	DP 10/1800	DP 10/0200
6. Control Operations/Work Assignments:						
8. Division/Group Communication Summary						
Function	Channel	RX Frequency N/W	RX Tone/NAC	TX Frequency N/W	TX Tone/NAC	Mode
COMMAND	3	159.1200N	NONE	151.3700N	82.5	A
AIR TO GROUND	4	169.2000N	NONE	169.2000N	NONE	A
COMMAND	8	159.2700N	156.7	151.1000N	123.0	A
TACTICAL	12	159.4425N	NONE	159.4425N	NONE	A
AIR TO GROUND	14	166.6750N	NONE	166.6750N	NONE	A
AIR TO GROUND	15	169.1500N	NONE	169.1500N	NONE	A
AIR GUARD	16	168.6250N	NONE	168.6250N	110.9	A
9. Prepared By (Resource Unit Leader)			Approved By (Planning Section Chief)		Date	Time
SHAUN STEWART			DUANE DURGEE		05/23/2017	2000

Division/Group Assignment List (ICS 204 WF)

1. Incident Name:			3.			
WEST MIMS			Branch:		Division/Group:	
2. Operational Period:			I, III, IV		SWING SHIFT	
SWING SHIFT 1400 - 0200						
Date/Time From: 05/24/2017 1400 WED		Date/Time To: 05/25/2017 0200 THU				
4. Operations Personnel						
PLANNING OPERATIONS CHIEF		STEVE WEAVER, MARC CRAIN J.BRAND (T), M.DAVIS (T), P.DANIELS		OPERATIONS CHIEF		RICK DOLAN
BRANCH DIRECTOR		LANCE DELGADO		DIVISION/GROUP SUPERVISOR		BRYCE THOMAS
SAFETY		LARRY GRUBBS CLAY STEPHENS (T)		AIR TACTICAL SUPERVISOR		MARK NUNEZ KEN MCLAUGHLIN
6. Control Operations/Work Assignments:						
Task:						
<ul style="list-style-type: none"> • Patrol and mop up as appropriate in priority Divisions C, O, A, Y, and Z. • Monitor fire activity and take appropriate action to reduce hot spots and maintain containment. • Ensure structure protection measures are in place. • Respond to any new starts within Refuge vicinity. Follow IA protocol. 						
Purpose:						
<ul style="list-style-type: none"> • Keep fire within current containment lines. • Provide transitional support to day shift operations. 						
End State:						
<ul style="list-style-type: none"> • Confine fire consistent with protecting structures, private timberlands and other resource values at risk. 						
7. Special Instructions:						
<p>Medical Emergency Channel: Command ETA for Ambulance to Scene: Air: 20 – 30 mins Ground: 10 - 15 mins Paved roads only. IWI – IC or approved person will use Channel 16 (Air Guard) for contact with air ambulance Air Ambulance landing zone to be determined by IWI – IC Utilize engines to provide dust abatement, as needed, prior to air ambulance landing</p> <p>Branch 1 AMB (D/S) Clinch Co. EMS 470-532-8806 Branch 3 AMB (D/S) Golden Isles 912-602-9224 Swing Shift Div. C Alyse Guterrez EMPF 602-885-3115 Swing Shift Div. A/Y Stephen Wolfstich EMPF 520-508-9807 Swing Shift Div O/Z Kyle Port EMPF 602-910-6788</p>						
8. Division/Group Communication Summary						
Function	Channel	RX Frequency N/W	RX Tone/NAC	TX Frequency N/W	TX Tone/NAC	Mode
COMMAND	3	159.1200N	NONE	151.3700N	82.5	A
AIR TO GROUND	4	169.2000N	NONE	169.2000N	NONE	A
COMMAND	8	159.2700N	156.7	151.1000N	123.0	A
TACTICAL	12	159.4425N	NONE	159.4425N	NONE	A
AIR TO GROUND	14	166.6750N	NONE	166.6750N	NONE	A
AIR TO GROUND	15	169.1500N	NONE	169.1500N	NONE	A
AIR GUARD	16	168.6250N	NONE	168.6250N	110.9	A
9. Prepared By (Resource Unit Leader)			Approved By (Planning Section Chief)		Date	Time
SHAUN STEWART			DUANE DURGEE		05/23/2017	2000

Division/Group Assignment List (ICS 204 WF)

1. Incident Name:			3.			
WEST MIMS			III		INITIAL ATTACK	
2. Operational Period: DAY SHIFT 0730-1930						
Date/Time From: 05/24/2017 0730 WED		Date/Time To: 05/24/2017 1930 WED				
4. Operations Personnel						
PLANNING OPERATIONS CHIEF		TRENT INGRAM PHIL DANIELS (T)		OPERATIONS CHIEF		RICK DOLAN FRED BOEHM
BRANCH DIRECTOR		RON SMITH		DIVISION/GROUP SUPERVISOR		GREGG BUCKALEW ARTURO GASDIK (T)
SAFETY		LARRY CONNELL		AIR TACTICAL GROUP SUPERVISOR		MARK NUNEZ KEN MCLAUGHLIN
5. Resources Assigned this Period						
Strike Team / Task Force / Resource Designator		LWD	Leader	Number Persons	Drop Off PT./Time	Pick Up PT./Time
ENG6 - NC-POR PLE1 E-2		06/03	AIMEE MIDGETT	2		
ENG6 - OK-4261 E-36 IA		05/23	ANDY HEISEY	2	EAST CAMP/0730	EAST CAMP/1930
ENG6 - SC-CRR-E262 E-237 IA		05/22	ROBERT ASKINS	2	EAST CAMP/0730	EAST CAMP/1930
ENG6 - WILDLANDS FIRE SERVICE INC - D65324 - 4 E-262		06/03	CHAD ANDERSON	3		
TPL2- D-223 E-240		05/27	UNSTAFFED	1	EAST CAMP/0730	EAST CAMP/1930
TPL2 DOZER - T2 - 750J PX3 E-131		05/24	ERIC MEEKINS	1	EAST CAMP/0730	EAST CAMP/1930
TPL2 OKE 56 - TPL E-35 IA		05/26	GEORGE PELT	1	EAST CAMP/0730	EAST CAMP/1930
DOZ2 OKE-54 E-34 IA		05/30	FED PRIVETT	1	EAST CAMP/0730	EAST CAMP/1930
DOZ2 - GA-SAR-922 IA E-122		05/30	C. JOHNSON	1	EAST CAMP/0730	EAST CAMP/1930
ICT4		05/30	CORY BRYANT	1	EAST CAMP/0730	EAST CAMP/1930
SOF2 O-539 575-574-2064		05/27	PAUL E BOUCHER	1	EAST CAMP/0730	EAST CAMP/1930
8. Division/Group Communication Summary						
Function	Channel	RX Frequency N/W	RX Tone/NAC	TX Frequency N/W	TX Tone/NAC	Mode
COMMAND	3	159.1200N	NONE	151.3700N	82.5	A
AIR TO GROUND	4	169.2000N	NONE	169.2000N	NONE	A
TACTICAL	1	154.2800N	NONE	154.2800N	NONE	A
AIR TO GROUND	14	166.6750N	NONE	166.6750N	NONE	A
AIR TO GROUND	15	169.1500N	NONE	169.1500N	NONE	A
AIR GUARD	16	168.6250N	NONE	168.6250N	110.9	A
9. Prepared By (Resource Unit Leader)			Approved By (Planning Section Chief)		Date	Time
SHAUN STEWART			DUANE DURGEE		05/23/2017	1128

Division/Group Assignment List (ICS 204 WF)

1. Incident Name:			3.			
WEST MIMS			III	INITIAL ATTACK		
2. Operational Period: DAY SHIFT 0730-1930						
Date/Time From: 05/24/2017 0730 WED		Date/Time To: 05/24/2017 1930 WED				
4. Operations Personnel						
PLANNING OPERATIONS CHIEF		TRENT INGRAM PHIL DANIELS (T)		OPERATIONS CHIEF		RICK DOLAN FRED BOEHM
BRANCH DIRECTOR		RON SMITH		DIVISION/GROUP SUPERVISOR		GREGG BUCKALEW ARTURO GASDIK (T)
SAFETY		LARRY CONNELL		AIR TACTICAL GROUP SUPERVISOR		MARK NUNEZ KEN MCLAUGHLIN
6. Control Operations/Work Assignments:						
Task						
<ul style="list-style-type: none"> • Respond to any new starts as requested by OKR duty officer. • Coordinate initial attack action with assigned aviation and/or ground assets. 						
Purpose						
<ul style="list-style-type: none"> • Ensure timely response on any initial attack within OKR jurisdictional boundaries and vicinity. 						
End State						
<ul style="list-style-type: none"> • Fire activity has been detected and appropriate action has been initiated. 						
7. Special Instructions:						
<p>Contact Resource Advisors for any cultural or archeological needs, as well as, RCW concerns. Ensure LCES is in place before operations begin and stay hydrated. Drive defensively and with lights on at all times. Communications: Use the tactical channel for the division you are in. Staging on east side at Refuge office.</p> <p>Use caution when working around logging operations.</p> <p>Medical Emergency Channel: Command ETA for Ambulance to Scene: Air: 20 – 30 mins Ground: 10 - 15 mins Paved roads only. IWI – IC or approved person will use Channel 16 (Air Guard) for contact with air ambulance Air Ambulance landing zone to be determined by IWI – IC Utilize engines to provide dust abatement, as needed, prior to air ambulance landing</p> <p>For IA protocol see page 7</p>						
8. Division/Group Communication Summary						
Function	Channel	RX Frequency N/W	RX Tone/NAC	TX Frequency N/W	TX Tone/NAC	Mode
COMMAND	3	159.1200N	NONE	151.3700N	82.5	A
AIR TO GROUND	4	169.2000N	NONE	169.2000N	NONE	A
TACTICAL	1	154.2800N	NONE	154.2800N	NONE	A
AIR TO GROUND	14	166.6750N	NONE	166.6750N	NONE	A
AIR TO GROUND	15	169.1500N	NONE	169.1500N	NONE	A
AIR GUARD	16	168.6250N	NONE	168.6250N	110.9	A
9. Prepared By (Resource Unit Leader)			Approved By (Planning Section Chief)		Date	Time
SHAUN STEWART			DUANE DURGEE		05/23/2017	1128

Division/Group Assignment List (ICS 204 WF)

1. Incident Name:			3.			
WEST MIMS			III		J/K/L	
2. Operational Period: DAY SHIFT 0730-1930						
Date/Time From: 05/24/2017 0730 WED		Date/Time To: 05/24/2017 1930 WED				
4. Operations Personnel						
OPERATIONS CHIEF		RICK DOLAN FRED BOEHM		BRANCH DIRECTOR		MARK CRAIN CHRIS LUNDGREN (T)
DIVISION/GROUP SUPERVISOR		JASON FORTHOFFER JEFF COBURN (T)		AIR ATTACK SUPERVISOR		
5. Resources Assigned this Period						
Strike Team / Task Force / Resource Designator		LWD	Leader	Number Persons	Drop Off PT./Time	Pick Up PT./Time
ENG6 BRUSH 143 E-769		05/29	RICARDO RENTERIA	6	EAST CAMP/0730	EAST CAMP/1930
ENG6 CO-PBS - 603 E-771		05/29	KEVIN EVANS	4	EAST CAMP/0730	EAST CAMP/1930
ENG6 VA-VAF - 641 - LEE E-655		05/26	JANET HERRING	3	EAST CAMP/0730	EAST CAMP/1930
MAST WESTCO E-865		06/05			EAST CAMP/0730	EAST CAMP/1930
MAST MULCHER/MASTICATOR VIN# B0062 E-834		06/05		1	EAST CAMP/0730	EAST CAMP/1930
MAST ROT RANCH E-74		05/28	MIKE PARRISH	1	EAST CAMP/0730	EAST CAMP/1930
BHOE ROT RANCH JD 6415 (MOWER) E-73		05/28	DARRELL CLARK	1	EAST CAMP/0730	EAST CAMP/1930
HEQB O-646		05/29	CHAD TUSS	1	EAST CAMP/0730	EAST CAMP/1930
EMPF O-560		05/26	LIONEL VAN GRUP	1	EAST CAMP/0730	EAST CAMP/1930
SOFS O-539		05/27	PAUL BOUCHER	1		
8. Division/Group Communication Summary						
Function	Channel	RX Frequency N/W	RX Tone/NAC	TX Frequency N/W	TX Tone/NAC	Mode
COMMAND	3	159.1200N	NONE	151.3700N	82.5	A
AIR TO GROUND	4	169.2000N	NONE	169.2000N	NONE	A
TACTICAL	13	159.4125N	NONE	159.4125N	NONE	A
AIR TO GROUND	14	166.6750N	NONE	166.6750N	NONE	A
AIR TO GROUND	15	169.1500N	NONE	169.1500N	NONE	A
AIR GUARD	16	168.6250N	NONE	168.6250N	110.9	A
9. Prepared By (Resource Unit Leader)			Approved By (Planning Section Chief)		Date	Time
SHAUN STEWART			DUANE DURGEE		05/23/2017	0800

Division/Group Assignment List (ICS 204 WF)

1. Incident Name:			3.			
WEST MIMS			III		J/K/L	
2. Operational Period: DAY SHIFT 0730-1930						
Date/Time From: 05/24/2017 0730 WED		Date/Time To: 05/24/2017 1930 WED				
4. Operations Personnel						
OPERATIONS CHIEF		RICK DOLAN FRED BOEHM		BRANCH DIRECTOR		MARK CRAIN CHRIS LUNDGREN (T)
DIVISION/GROUP SUPERVISOR		JASON FORTHOFFER JEFF COBURN (T)		AIR ATTACK SUPERVISOR		
5. Resources Assigned this Period						
Strike Team / Task Force / Resource Designator		LWD	Leader	Number Persons	Drop Off PT./Time	Pick Up PT./Time
6. Control Operations/Work Assignments:						
Task						
<ul style="list-style-type: none"> • Assist private landowners and coordinate preparation of timberlands adjacent to the division. • Respond to any new starts within the division. • Monitor fire activity and location within the swamp. • Refresh Swamp Edge Break. 						
Purpose						
<ul style="list-style-type: none"> • Keep fire west of Swamp Edge Break. 						
End State						
<ul style="list-style-type: none"> • Fire activity that threatens Swamp Edge Break has been detected and appropriate action has been initiated. • Fire is contained by adequate control line to reduce threat to escape; minimizing damage to private timberlands, private lands, and other resource values at risk. 						
7. Special Instructions:						
Use caution when working around logging operations.						
For IA protocol see page 8						
Medical Emergency Channel: Command						
ETA for Ambulance to Scene:						
Air: 20 – 30 mins						
Ground: 10 - 15 mins Paved roads only.						
IWI – IC or approved person will use Channel 16 (Air Guard) for contact with air ambulance						
Air Ambulance landing zone to be determined by IWI – IC						
Utilize engines to provide dust abatement, as needed, prior to air ambulance landing						
8. Division/Group Communication Summary						
Function	Channel	RX Frequency N/W	RX Tone/NAC	TX Frequency N/W	TX Tone/NAC	Mode
COMMAND	3	159.1200N	NONE	151.3700N	82.5	A
AIR TO GROUND	4	169.2000N	NONE	169.2000N	NONE	A
TACTICAL	13	159.4125N	NONE	159.4125N	NONE	A
AIR TO GROUND	14	166.6750N	NONE	166.6750N	NONE	A
AIR TO GROUND	15	169.1500N	NONE	169.1500N	NONE	A
AIR GUARD	16	168.6250N	NONE	168.6250N	110.9	A
9. Prepared By (Resource Unit Leader)			Approved By (Planning Section Chief)		Date	Time
SHAUN STEWART			DUANE DURGEE		05/23/2017	0800

Division/Group Assignment List (ICS 204 WF)

1. Incident Name:			3.			
WEST MIMS			Branch:		Division/Group:	
2. Operational Period: DAY SHIFT 0730-1930			III		M	
Date/Time From: 05/24/2017 0730 WED		Date/Time To: 05/24/2017 1930 WED				
4. Operations Personnel						
PLANNING OPERATIONS CHIEF		TRENT INGRAM PHIL DANIELS (T)		OPERATIONS CHIEF		RICK DOLAN EAST - FRED BOEHM
BRANCH DIRECTOR		RON SMITH		DIVISION/GROUP SUPERVISOR		DAVID SMITH JASON LAGO (T)
SAFETY		LARRY CONNELL		AIR TACTICAL GROUP SUPERVISOR		MARK NUNEZ, KEN MCLAUGHLIN
5. Resources Assigned this Period						
Strike Team / Task Force / Resource Designator		LWD	Leader	Number Persons	Drop Off PT./Time	Pick Up PT./Time
ENG6 - ATTACK ONE FIRE MGMT SERV E-257		05/28	JOHN HOELLERICH	2	EAST CAMP/0730	EAST CAMP/1930
ENG6 - AR-OZF - SYL - E-671 E-283		05/24	LARRY VANDIVER	3	EAST CAMP/0730	EAST CAMP/1930
ENG6 - NAX - BRUSH 7-4 E-848		05/31	MAX BORINO	3	EAST CAMP/0730	EAST CAMP/1930
ENG6 - SCHOLL FIRE & FUELS MANAGEMENT, INC. - 2 E-263		06/02	ROBERT MAHARREY	3	EAST CAMP/0730	EAST CAMP/1930
TPL2 - GFC1417 E-665		05/24	ERIC SMITH	1	EAST CAMP/0730	EAST CAMP/1930
TPL3 - TRACTOR - GFC4202120 E-666		05/25	STEVEN JOHNSON	1	EAST CAMP/0730	EAST CAMP/1930
TPL3 - TRACTOR PLOW - T3 - GFC2623 E-667		05/25	DAVIS STEEDLEY	1	EAST CAMP/0730	EAST CAMP/1930
WTS2 WET 'N RED, LLC - 58592 E-365		05/23	ALLEN WEST	2	EAST CAMP/0730	EAST CAMP/1930
TFLD O-385		06/08	MARVIN ROYBAL	1		
TFLD O-670		06/01	MIKE BROD	1		
HEQB O-601		05/28	JASON B FOREMAN	1	EAST CAMP/0730	EAST CAMP/1930
STEQ O-512		05/25	JASON HARRIS	1	EAST CAMP/0730	EAST CAMP/1930
EMPF O-560 928-235-7059		05/26	LIONEL VAN GURP	1	EAST CAMP/0730	EAST CAMP/1930
SOF2 O-587		05/29	RON BERTSCH	1	EAST CAMP/0730	EAST CAMP/1930
8. Division/Group Communication Summary						
Function	Channel	RX Frequency N/W	RX Tone/NAC	TX Frequency N/W	TX Tone/NAC	Mode
COMMAND	3	159.1200N	NONE	151.3700N	82.5	A
AIR TO GROUND	4	169.2000N	NONE	169.2000N	NONE	A
TACTICAL	9	159.2850N	NONE	159.2850N	156.7	A
AIR TO GROUND	14	166.6750N	NONE	166.6750N	NONE	A
AIR TO GROUND	15	169.1500N	NONE	169.1500N	NONE	A
AIR GUARD	16	168.6250N	NONE	168.6250N	110.9	A
9. Prepared By (Resource Unit Leader)			Approved By (Planning Section Chief)		Date	Time
SHAUN STEWART			DUANE DURGEE		05/23/2017	1128

Division/Group Assignment List (ICS 204 WF)

1. Incident Name:			3.			
WEST MIMS			III		M	
2. Operational Period: DAY SHIFT 0730-1930						
Date/Time From: 05/24/2017 0730 WED		Date/Time To: 05/24/2017 1930 WED				
4. Operations Personnel						
PLANNING OPERATIONS CHIEF		TRENT INGRAM PHIL DANIELS (T)		OPERATIONS CHIEF		RICK DOLAN EAST - FRED BOEHM
BRANCH DIRECTOR		RON SMITH		DIVISION/GROUP SUPERVISOR		DAVID SMITH JASON LAGO (T)
SAFETY		LARRY CONNELL		AIR TACTICAL GROUP SUPERVISOR		MARK NUNEZ, KEN MCLAUGHLIN
6. Control Operations/Work Assignments:						
Task						
<ul style="list-style-type: none"> • Prepare for strategic firing of control lines. • Respond to any new starts within the division. • Patrol and mop up fuels appropriate to fuel type and anticipated weather and fire behavior. 						
Purpose						
<ul style="list-style-type: none"> • Keep fire west of Swamp Edge Break. 						
End State						
<ul style="list-style-type: none"> • Fire is contained by adequate control line to reduce threat to escape; minimizing damage to private timberlands, private lands, and other resource values at risk. 						
7. Special Instructions:						
Ensure LCES is in place before operations begin and stay hydrated. Drive defensively and with lights on at all times. Identify escape routes.						
Use caution when working around logging operations.						
For IA protocol see page 7						
Medical Emergency Channel: Command ETA for Ambulance to Scene: Air: 20 – 30 mins Ground: 10 - 15 mins Paved roads only. IWI – IC or approved person will use Channel 16 (Air Guard) for contact with air ambulance Air Ambulance landing zone to be determined by IWI – IC Utilize engines to provide dust abatement, as needed, prior to air ambulance landing						
8. Division/Group Communication Summary						
Function	Channel	RX Frequency N/W	RX Tone/NAC	TX Frequency N/W	TX Tone/NAC	Mode
COMMAND	3	159.1200N	NONE	151.3700N	82.5	A
AIR TO GROUND	4	169.2000N	NONE	169.2000N	NONE	A
TACTICAL	9	159.2850N	NONE	159.2850N	156.7	A
AIR TO GROUND	14	166.6750N	NONE	166.6750N	NONE	A
AIR TO GROUND	15	169.1500N	NONE	169.1500N	NONE	A
AIR GUARD	16	168.6250N	NONE	168.6250N	110.9	A
9. Prepared By (Resource Unit Leader)			Approved By (Planning Section Chief)		Date	Time
SHAUN STEWART			DUANE DURGEE		05/23/2017	1128

Division/Group Assignment List (ICS 204 WF)

1. Incident Name:			3.			
WEST MIMS			III		N	
2. Operational Period: DAY SHIFT 0730-1930						
Date/Time From: 05/24/2017 0730 WED		Date/Time To: 05/24/2017 1930 WED				
4. Operations Personnel						
PLANNING OPERATIONS CHIEF		TRENT INGRAM PHIL DANIELS (T)		OPERATIONS CHIEF		RICK DOLAN FRED BOEHM
BRANCH DIRECTOR		RON SMITH		DIVISION/GROUP SUPERVISOR		KAREN SCHOLL CHRIS RANKIN (T)
SAFETY		LARRY CONNELL		AIR TACTICAL GROUP SUPERVISOR		MARK NUNEZ, KEN MCLAUGHLIN
5. Resources Assigned this Period						
Strike Team / Task Force / Resource Designator		LWD	Leader	Number Persons	Drop Off PT./Time	Pick Up PT./Time
TFLD O-591		05/28	CLAYTON W SWANGER	1	EAST CAMP/0730	EAST CAMP/1930
ENG3 - 335 E-756		05/31	WILLIAM F MARCKS	5	EAST CAMP/0730	EAST CAMP/1930
ENG6 TRINIDAD FIRE 2930 E-774		05/29	MIGUEL ORTIZ	3	EAST CAMP/0730	EAST CAMP/1930
ENG6 - MBF - ENGINE 694 E-776		06/03	JOSH MCGEE	3	EAST CAMP/0730	EAST CAMP/1930
WT2 - AZCOF - WT-4-74 E-600		05/26	JASON KOLB	2	EAST CAMP/0730	EAST CAMP/1930
EMPF O-560 928-235-7059		05/26	LIONEL VAN GURP	1	EAST CAMP/0730	EAST CAMP/1930
SOF2 O-587		05/29	RON BERTSCH	1	EAST CAMP/0730	EAST CAMP/1930
8. Division/Group Communication Summary						
Function	Channel	RX Frequency N/W	RX Tone/NAC	TX Frequency N/W	TX Tone/NAC	Mode
COMMAND	3	159.1200N	NONE	151.3700N	82.5	A
AIR TO GROUND	4	169.2000N	NONE	169.2000N	NONE	A
TACTICAL	10	168.3500N	NONE	168.3500N	NONE	A
AIR TO GROUND	14	166.6750N	NONE	166.6750N	NONE	A
AIR TO GROUND	15	169.1500N	NONE	169.1500N	NONE	A
AIR GUARD	16	168.6250N	NONE	168.6250N	110.9	A
9. Prepared By (Resource Unit Leader)			Approved By (Planning Section Chief)		Date	Time
SHAUN STEWART			DUANE DURGEE		05/23/2017	1128

Division/Group Assignment List (ICS 204 WF)

1. Incident Name:			3.			
WEST MIMS			III	N		
2. Operational Period: DAY SHIFT 0730-1930						
Date/Time From: 05/24/2017 0730	WED	Date/Time To: 05/24/2017 1930	WED			
4. Operations Personnel						
PLANNING OPERATIONS CHIEF		TRENT INGRAM PHIL DANIELS (T)	OPERATIONS CHIEF		RICK DOLAN FRED BOEHM	
BRANCH DIRECTOR		RON SMITH	DIVISION/GROUP SUPERVISOR		KAREN SCHOLL CHRIS RANKIN (T)	
SAFETY		LARRY CONNELL	AIR TACTICAL GROUP SUPERVISOR		MARK NUNEZ, KEN MCLAUGHLIN	
6. Control Operations/Work Assignments:						
Task						
<ul style="list-style-type: none"> • Respond to any new starts within the division. • Patrol and mop up fuels appropriate to fuel type and anticipated weather and fire behavior. 						
Purpose						
<ul style="list-style-type: none"> • Keep fire west of Swamp Edge Break and south of Crawford Road. 						
End State						
<ul style="list-style-type: none"> • Fire is contained by adequate control line to reduce threat to escape; minimizing damage to private timberlands, private lands, and other resource values at risk. 						
7. Special Instructions:						
Ensure LCES is in place before operations begin and stay hydrated. Drive defensively and with lights on at all times. Identify escape routes.						
Use caution when working around logging operations.						
For IA protocol see page 7						
Medical Emergency Channel: Command						
ETA for Ambulance to Scene:						
Air: 20 – 30 mins						
Ground: 10 - 15 mins Paved roads only.						
IWI – IC or approved person will use Channel 16 (Air Guard) for contact with air ambulance						
Air Ambulance landing zone to be determined by IWI – IC						
Utilize engines to provide dust abatement, as needed, prior to air ambulance landing						
8. Division/Group Communication Summary						
Function	Channel	RX Frequency N/W	RX Tone/NAC	TX Frequency N/W	TX Tone/NAC	Mode
COMMAND	3	159.1200N	NONE	151.3700N	82.5	A
AIR TO GROUND	4	169.2000N	NONE	169.2000N	NONE	A
TACTICAL	10	168.3500N	NONE	168.3500N	NONE	A
AIR TO GROUND	14	166.6750N	NONE	166.6750N	NONE	A
AIR TO GROUND	15	169.1500N	NONE	169.1500N	NONE	A
AIR GUARD	16	168.6250N	NONE	168.6250N	110.9	A
9. Prepared By (Resource Unit Leader)			Approved By (Planning Section Chief)		Date	Time
SHAUN STEWART			DUANE DURGEE		05/23/2017	1128

Division/Group Assignment List (ICS 204 WF)

1. Incident Name:			3.			
WEST MIMS			Branch:		Division/Group:	
2. Operational Period: DAY SHIFT 0730-1930			III		O	
Date/Time From: 05/24/2017 0730	WED	Date/Time To: 05/24/2017 1930	WED			
4. Operations Personnel						
PLANNING OPERATIONS CHIEF		TRENT INGRAM PHIL DANIELS (T)		OPERATIONS CHIEF		
BRANCH DIRECTOR		MARC CRAIN CHRIS LUNDGREN (T)		DIVISION/GROUP SUPERVISOR		
SAFETY		LARRY CONNELL		AIR TACTICAL GROUP SUPERVISOR		
				RICK DOLAN EAST - FRED BOEHM		
				SHAWN ALEXANDER, ROB THORPE MICHAEL GUE (T)		
				MARK NUNEZ, KEN MCLAUGHLIN		
5. Resources Assigned this Period						
Strike Team / Task Force / Resource Designator		LWD	Leader	Number Persons	Drop Off PT./Time	Pick Up PT./Time
HC2I - NMCIF - ACOMA #1 C-12		05/25	ANDREW M HENRY	21	EAST CAMP/0730	EAST CAMP/1930
MODULE - SUPPRESSION - BIA SUPPRESSION MODULE #2 O-522		05/26	SCOTTY KOPEPASSAH	11	EAST CAMP/0730	EAST CAMP/1930
ENG6 - 161 E-656		05/27	TOD BENNETT	3	EAST CAMP/0730	EAST CAMP/1930
ENG6 - 2661 - BRAZORIA REFUGE E-657		05/27	NORTHSTONE	2	EAST CAMP/0730	EAST CAMP/1930
ENG6 - 611 E-663		05/29	JORDAN BLACK	3	EAST CAMP/0730	EAST CAMP/1930
ENG6 - NMLNF621 - SACRAMENTO RD E-765		05/30	TIM MCELHNEY	4	EAST CAMP/0730	EAST CAMP/1930
ENG6 J3 CONTRACTING - 07 - VIN# UNLISTED E-732		05/31	ANTHONY PARLIC	3	EAST CAMP/0730	EAST CAMP/1930
ENG6 - BOULDER COUNTY SHERIFF - ENGINE 6531 E-847		05/31	KENYON SHEPHARD	6	EAST CAMP/0730	EAST CAMP/1930
ENG6 J3 CONTRACTING - 12 - VIN# 002974 E-733		05/31	LANCE WOLLEBAEK	3	EAST CAMP/0730	EAST CAMP/1930
ENG6 - FWS - 462 E-261		06/03	CHRISTOPHER NOTHSTINE	3	EAST CAMP/0730	EAST CAMP/1930
WTS2 - BONNELL SAND & GRAVEL I E-366		05/23	JOEL BONNELL	1	EAST CAMP/0730	EAST CAMP/1930
TFLD O-635		05/31	BRIAN ANDERSON	1	EAST CAMP/0730	EAST CAMP/1930
TFLD O-592		05/28	DALE E MIDDLETON	1	EAST CAMP/0730	EAST CAMP/1930
8. Division/Group Communication Summary						
Function	Channel	RX Frequency N/W	RX Tone/NAC	TX Frequency N/W	TX Tone/NAC	Mode
COMMAND	3	159.1200N	NONE	151.3700N	82.5	A
AIR TO GROUND	4	169.2000N	NONE	169.2000N	NONE	A
TACTICAL	11	163.7125N	NONE	163.7125N	NONE	A
AIR TO GROUND	14	166.6750N	NONE	166.6750N	NONE	A
AIR TO GROUND	15	169.1500N	NONE	169.1500N	NONE	A
AIR GUARD	16	168.6250N	NONE	168.6250N	110.9	A
9. Prepared By (Resource Unit Leader)			Approved By (Planning Section Chief)		Date	Time
SHAUN STEWART			DUANE DURGEE		05/23/2017	1128

Division/Group Assignment List (ICS 204 WF)

1. Incident Name:			3.			
WEST MIMS			III		O	
2. Operational Period: DAY SHIFT 0730-1930						
Date/Time From: 05/24/2017 0730 WED		Date/Time To: 05/24/2017 1930 WED				
4. Operations Personnel						
PLANNING OPERATIONS CHIEF		TRENT INGRAM PHIL DANIELS (T)		OPERATIONS CHIEF		RICK DOLAN EAST - FRED BOEHM
BRANCH DIRECTOR		MARC CRAIN CHRIS LUNDGREN (T)		DIVISION/GROUP SUPERVISOR		SHAWN ALEXANDER, ROB THORPE MICHAEL GUE (T)
SAFETY		LARRY CONNELL		AIR TACTICAL GROUP SUPERVISOR		MARK NUNEZ, KEN MCLAUGHLIN
6. Control Operations/Work Assignments:						
Task						
<ul style="list-style-type: none"> • Respond to any new starts within the division. • Patrol and mop up fuels appropriate to fuel type and anticipated weather and fire behavior. • 						
Purpose						
<ul style="list-style-type: none"> • Keep fire within established fire containment lines. • 						
End State						
<ul style="list-style-type: none"> • Fire is contained by adequate control line to reduce threat to escape; minimizing damage to private timberlands, private lands, and other resource values at risk. 						
7. Special Instructions:						
Ensure LCES are in place before operations begin and stay hydrated. Drive defensively and with lights on at all times. Identify escape routes.						
Use caution when working around logging operations.						
For IA protocol see page 7						
Medical Emergency Channel: Command ETA for Ambulance to Scene: Air: 20 – 30 mins Ground: 10 - 15 mins Paved roads only. IWI – IC or approved person will use Channel 16 (Air Guard) for contact with air ambulance Air Ambulance landing zone to be determined by IWI – IC Utilize engines to provide dust abatement, as needed, prior to air ambulance landing						
8. Division/Group Communication Summary						
Function	Channel	RX Frequency N/W	RX Tone/NAC	TX Frequency N/W	TX Tone/NAC	Mode
COMMAND	3	159.1200N	NONE	151.3700N	82.5	A
AIR TO GROUND	4	169.2000N	NONE	169.2000N	NONE	A
TACTICAL	11	163.7125N	NONE	163.7125N	NONE	A
AIR TO GROUND	14	166.6750N	NONE	166.6750N	NONE	A
AIR TO GROUND	15	169.1500N	NONE	169.1500N	NONE	A
AIR GUARD	16	168.6250N	NONE	168.6250N	110.9	A
9. Prepared By (Resource Unit Leader)			Approved By (Planning Section Chief)		Date	Time
SHAUN STEWART			DUANE DURGEE		05/23/2017	1128

Division/Group Assignment List (ICS 204 WF)

1. Incident Name:			3.			
WEST MIMS			III	STAGING		
2. Operational Period: DAY SHIFT 0730-1930						
Date/Time From: 05/24/2017 0730 WED		Date/Time To: 05/24/2017 1930 WED				
4. Operations Personnel						
PLANNING OPERATIONS CHIEF		TRENT INGRAM PHIL DANIELS (T)		OPERATIONS CHIEF		
BRANCH DIRECTOR		RON SMITH		STAGING AREA MANAGER		
SAFETY		LARRY CONNELL		AIR TACTICAL GROUP SUPERVISOR		
RICK DOLAN FRED BOEHM		ADAM DUMMER		MARK NUNEZ, KEN MCLAUGHLIN		
6. Control Operations/Work Assignments:						
Task						
<ul style="list-style-type: none"> • Assess availability of surplus resources for reassignment. • Advise Planning Operations which resources are surplus and available to reallocate within incident. 						
Purpose						
<ul style="list-style-type: none"> • To provide logistical support for resources pending reassignment or demobilization. 						
End State						
<ul style="list-style-type: none"> • A pool of resources are readily available for reassignment or demobilization. 						
7. Special Instructions:						
For IA protocol see page 7						
Use caution when working around logging operations.						
Staging Area Manager Phone Numbers:						
ADAM DUMMER 831-238-0991 CHRISTOPHER RUDD 541-660-0634						
Medical Emergency Channel: Command ETA for Ambulance to Scene: Air: 20 – 30 mins Ground: 10 - 15 mins Paved roads only. IWI – IC or approved person will use Channel 16 (Air Guard) for contact with air ambulance Air Ambulance landing zone to be determined by IWI – IC Utilize engines to provide dust abatement, as needed, prior to air ambulance landing						
8. Division/Group Communication Summary						
Function	Channel	RX Frequency N/W	RX Tone/NAC	TX Frequency N/W	TX Tone/NAC	Mode
COMMAND	3	159.1200N	NONE	151.3700N	82.5	A
AIR TO GROUND	4	169.2000N	NONE	169.2000N	NONE	A
TACTICAL	10	168.3500N	NONE	168.3500N	NONE	A
AIR TO GROUND	14	166.6750N	NONE	166.6750N	NONE	A
AIR TO GROUND	15	169.1500N	NONE	169.1500N	NONE	A
AIR GUARD	16	168.6250N	NONE	168.6250N	110.9	A
9. Prepared By (Resource Unit Leader)			Approved By (Planning Section Chief)		Date	Time
SHAUN STEWART			DUANE DURGEE		05/23/2017	1128

Division/Group Assignment List (ICS 204 WF)

1. Incident Name:			3.			
WEST MIMS			III		Division/Group: STRUCTURE PROTECTION	
2. Operational Period: DAY SHIFT 0730-1930						
Date/Time From: 05/24/2017 0730 WED		Date/Time To: 05/24/2017 1930 WED				
4. Operations Personnel						
OPERATIONS CHIEF		RICK DOLAN FRED BOEHM		BRANCH DIRECTOR		MARC CRAIN CHRIS LUNDGREN (T)
DIVISION/GROUP SUPERVISOR		RANDY GREGORY		AIR ATTACK SUPERVISOR		
5. Resources Assigned this Period						
Strike Team / Task Force / Resource Designator		LWD	Leader	Number Persons	Drop Off PT./Time	Pick Up PT./Time
TFLD O-650		05/30	JAMES SPARROW	1	EAST CAMP/0730	EAST CAMP/1930
STEN O-657		05/30	JERRY VAN DYNE	1	EAST CAMP/0730	EAST CAMP/1930
ENG3 -361- CA-SHF E-423		06/01	JOHN WALKER	5	EAST CAMP/0730	EAST CAMP/1930
ENG3 CA-SHF-51 E-422		06/03	RYAN MEANS	5	EAST CAMP/0730	EAST CAMP/1930
ENG6 MT-KNF E-483		05/24	TONY REBO		EAST CAMP/0730	EAST CAMP/1930
ENG6 #0661 E-412		06/02	ERIK EBY	3	EAST CAMP/0730	EAST CAMP/1930
ENG6 - E2693 TWIN FALLS E-844		06/01	CHRIS BELLISTON	3	EAST CAMP/0730	EAST CAMP/1930
DOZER - T3 - CONECUH 4054 E-449		05/20			EAST CAMP/0730	EAST CAMP/1930
EMPF O-560		05/26	LIONEL VAN GRUP	1	EAST CAMP/0730	EAST CAMP/1930
SOF2 O-539		05/27	PAUL BOUCHER	1	EAST CAMP/0730	EAST CAMP/1930
8. Division/Group Communication Summary						
Function	Channel	RX Frequency N/W	RX Tone/NAC	TX Frequency N/W	TX Tone/NAC	Mode
COMMAND	3	159.1200N	NONE	151.3700N	82.5	A
AIR TO GROUND	4	169.2000N	NONE	169.2000N	NONE	A
TACTICAL	12	159.4425N	NONE	159.4425N	NONE	A
AIR TO GROUND	14	166.6750N	NONE	166.6750N	NONE	A
AIR TO GROUND	15	169.1500N	NONE	169.1500N	NONE	A
AIR GUARD	16	168.6250N	NONE	168.6250N	110.9	A
9. Prepared By (Resource Unit Leader)			Approved By (Planning Section Chief)		Date	Time
SHAUN STEWART			DUANE DURGEE		05/23/2017	2000

Division/Group Assignment List (ICS 204 WF)

1. Incident Name:			3.				
WEST MIMS			III	Branch:		Division/Group:	
2. Operational Period: DAY SHIFT 0730-1930				III		STRUCTURE PROTECTION	
Date/Time From: 05/24/2017 0730 WED		Date/Time To: 05/24/2017 1930 WED					
4. Operations Personnel							
OPERATIONS CHIEF		RICK DOLAN FRED BOEHM		BRANCH DIRECTOR		MARC CRAIN CHRIS LUNDGREN (T)	
DIVISION/GROUP SUPERVISOR		RANDY GREGORY		AIR ATTACK SUPERVISOR			
5. Resources Assigned this Period							
Strike Team / Task Force / Resource Designator		LWD	Leader	Number Persons	Drop Off PT./Time	Pick Up PT./Time	
6. Control Operations/Work Assignments:							
Task <ul style="list-style-type: none"> Provide structure protection for the community of St. George. Implement structure protection efforts within Branch III and IV as needed. Purpose <ul style="list-style-type: none"> Ensure timely response to protect human life, property, and infrastructure. End State <ul style="list-style-type: none"> Fire is contained by adequate control line to reduce threat to escape; minimizing damage to private timberlands, private lands, and other resource values at risk. 							
7. Special Instructions:							
Coordinate with Charlton County Emergency Management 912-390-2022. For IA protocol see page 8 Medical Emergency Channel: Command ETA for Ambulance to Scene: Air: 20 – 30 mins Ground: 10 - 15 mins Paved roads only. IWI – IC or approved person will use Channel 16 (Air Guard) for contact with air ambulance Air Ambulance landing zone to be determined by IWI – IC Utilize engines to provide dust abatement, as needed, prior to air ambulance landing							
8. Division/Group Communication Summary							
Function	Channel	RX Frequency N/W	RX Tone/NAC	TX Frequency N/W	TX Tone/NAC	Mode	
COMMAND	3	159.1200N	NONE	151.3700N	82.5	A	
AIR TO GROUND	4	169.2000N	NONE	169.2000N	NONE	A	
TACTICAL	12	159.4425N	NONE	159.4425N	NONE	A	
AIR TO GROUND	14	166.6750N	NONE	166.6750N	NONE	A	
AIR TO GROUND	15	169.1500N	NONE	169.1500N	NONE	A	
AIR GUARD	16	168.6250N	NONE	168.6250N	110.9	A	
9. Prepared By (Resource Unit Leader)			Approved By (Planning Section Chief)		Date	Time	
SHAUN STEWART			DUANE DURGEE		05/23/2017	2000	

Division/Group Assignment List (ICS 204 WF)

1. Incident Name:			3.			
WEST MIMS			IV		A	
2. Operational Period: DAY SHIFT 0730-1930						
Date/Time From: 05/24/2017 0730 WED		Date/Time To: 05/24/2017 1930 WED				
4. Operations Personnel						
PLANNING OPERATIONS CHIEF		TRENT INGRAM PHIL DANIELS (T)		OPERATIONS CHIEF		RICK DOLAN FRED BOEHM
BRANCH DIRECTOR		STEVE MILLER		DIVISION/GROUP SUPERVISOR		TOM TALBOT JEFF BOSTWICK (T)
SAFETY		LARRY CONNELL		AIR TACTICAL GROUP SUPERVISOR		MARK NUNEZ, KEN MCLAUGHLIN
5. Resources Assigned this Period						
Strike Team / Task Force / Resource Designator		LWD	Leader	Number Persons	Drop Off PT./Time	Pick Up PT./Time
ENG3 - DEER MOUNTAIN FPD - ENGINE 12 E-280		06/06	JOSEPH CRAIG WATTS	3	EAST CAMP/0730	EAST CAMP/1930
ENG6 - KNF - FSD3 - 631 E-285		05/31	ADAUTO, JULIAN	5	EAST CAMP/0730	EAST CAMP/1930
ENG6 - WILDLANDS FIRE SERVICE INC - C93328 - 5 E-539		05/24	DAVID HOGREFE	3	EAST CAMP/0730	EAST CAMP/1930
ENG6 - GFC4201278 E-706		05/26	DOUG ANDREWS	3	EAST CAMP/0730	EAST CAMP/1930
ENG6 - 6171 E-77		06/05	DAVID GIBSON	3	EAST CAMP/0730	EAST CAMP/1930
ENG6 - NC-NCS - PK-7795 E-533		05/24	MICHAEL BLAKE	2	EAST CAMP/0730	EAST CAMP/1930
ENG6-E631 E-56		06/04	DARRYL BRIGHTWELL	3	EAST CAMP/0730	EAST CAMP/1930
ENG6 J3 CONT 07 E-731		05/31	CURTIC PUMPHREY	3	EAST CAMP/0730	EAST CAMP/1930
WATER TENDER - SUPPORT - T2 - TIPTON & YOUNG CONSTRUCT E-347		05/26	ROBERT COYLE	1		
WTS2 - STRICKLANDS E-272		06/05	JOHN TINER	1	EAST CAMP/0730	EAST CAMP/1930
TFLD E-56.10		05/24	DANIEL CASTO	1	EAST CAMP/0730	EAST CAMP/1930
TFLD O-606		05/28	DAREK PEPPE	1	EAST CAMP/0730	EAST CAMP/1930
EMPF E-376		05/24	PAUL PUGH	1		
SOF2 O-540 229-561-4259		06/12	JACK BENZILIO	1	EAST CAMP/0730	EAST CAMP/1930
8. Division/Group Communication Summary						
Function	Channel	RX Frequency N/W	RX Tone/NAC	TX Frequency N/W	TX Tone/NAC	Mode
AIR TO GROUND	4	169.2000N	NONE	169.2000N	NONE	A
COMMAND	8	159.2700N	156.7	151.1000N	123.0	A
TACTICAL	1	154.2800N	NONE	154.2800N	NONE	A
AIR TO GROUND	14	166.6750N	NONE	166.6750N	NONE	A
AIR TO GROUND	15	169.1500N	NONE	169.1500N	NONE	A
AIR GUARD	16	168.6250N	NONE	168.6250N	110.9	A
9. Prepared By (Resource Unit Leader)			Approved By (Planning Section Chief)		Date	Time
SHAUN STEWART			DUANE DURGEE		05/23/2017	1128

Division/Group Assignment List (ICS 204 WF)

1. Incident Name:			3.			
WEST MIMS			IV		A	
2. Operational Period: DAY SHIFT 0730-1930						
Date/Time From: 05/24/2017 0730 WED		Date/Time To: 05/24/2017 1930 WED				
4. Operations Personnel						
PLANNING OPERATIONS CHIEF		TRENT INGRAM PHIL DANIELS (T)		OPERATIONS CHIEF		RICK DOLAN FRED BOEHM
BRANCH DIRECTOR		STEVE MILLER		DIVISION/GROUP SUPERVISOR		TOM TALBOT JEFF BOSTWICK (T)
SAFETY		LARRY CONNELL		AIR TACTICAL GROUP SUPERVISOR		MARK NUNEZ, KEN MCLAUGHLIN
6. Control Operations/Work Assignments:						
Task						
<ul style="list-style-type: none"> • Patrol and mop up fuels appropriate to fuel type and anticipated weather and fire behavior. • Respond to any new starts within the division. 						
Purpose						
<ul style="list-style-type: none"> • Keep fire north of FL 2. 						
End State						
<ul style="list-style-type: none"> • Fire is contained by adequate control line to reduce threat to escape; minimizing damage to private timberlands, private lands, and other resource values at risk. 						
7. Special Instructions:						
<p>Ensure LCES is in place before operations begin and stay hydrated. Drive defensively and with lights on at all times. Identify escape routes. Bridge near DP 9 restricted to pickups - No engines. Bridge on swamp perimeter road just east of first Branch has steep drop offs - 1 lane travel - watch for barricades.</p> <p>Use caution when working around logging operations.</p> <p>For IA protocol see page 7</p> <p>Medical Emergency Channel: Command ETA for Ambulance to Scene: Air: 20 – 30 mins Ground: 10 - 15 mins Paved roads only. IWI – IC or approved person will use Channel 16 (Air Guard) for contact with air ambulance Air Ambulance landing zone to be determined by IWI – IC Utilize engines to provide dust abatement, as needed, prior to air ambulance landing</p>						
8. Division/Group Communication Summary						
Function	Channel	RX Frequency N/W	RX Tone/NAC	TX Frequency N/W	TX Tone/NAC	Mode
AIR TO GROUND	4	169.2000N	NONE	169.2000N	NONE	A
COMMAND	8	159.2700N	156.7	151.1000N	123.0	A
TACTICAL	1	154.2800N	NONE	154.2800N	NONE	A
AIR TO GROUND	14	166.6750N	NONE	166.6750N	NONE	A
AIR TO GROUND	15	169.1500N	NONE	169.1500N	NONE	A
AIR GUARD	16	168.6250N	NONE	168.6250N	110.9	A
9. Prepared By (Resource Unit Leader)			Approved By (Planning Section Chief)		Date	Time
SHAUN STEWART			DUANE DURGEE		05/23/2017	1128

Division/Group Assignment List (ICS 204 WF)

1. Incident Name:				3.			
WEST MIMS				Branch:		Division/Group:	
2. Operational Period: DAY SHIFT 0730-1930				IV		Y	
Date/Time From: 05/24/2017 0730 WED		Date/Time To: 05/24/2017 1930 WED					
4. Operations Personnel							
PLANNING OPERATIONS CHIEF		TRENT INGRAM PHIL DANIELS (T)		OPERATIONS CHIEF		RICK DOLAN EAST - FRED BOEHM	
BRANCH DIRECTOR		STEVE MILLER		DIVISION/GROUP SUPERVISOR		RANDY GREGORY SEAN BASSO (T)	
SAFETY		LARRY CONNELL		AIR TACTICAL GROUP SUPERVISOR		MARK NUNEZ, KEN MCLAUGHLIN	
5. Resources Assigned this Period							
Strike Team / Task Force / Resource Designator		LWD	Leader	Number Persons	Drop Off PT./Time	Pick Up PT./Time	
MODULE - WILDLAND FIRE - SW SAGUARO NP O-477		05/28	JASON THIVENER	7	EAST CAMP/0730	EAST CAMP/1930	
ENG3 - DURANGO FIRE - BRUSH 31 E-869		06/03	ALLEN R OTTMAN	4	EAST CAMP/0730	EAST CAMP/1930	
ENG6 MURRAY 86 - 4201016 E-61		05/26	KENNETH HARKINS	2	EAST CAMP/0730	EAST CAMP/1930	
ENG6 FRANKLIN 86 - GFC4202065 E-59		05/26	DOUGLAS SLAY	2	EAST CAMP/0730	EAST CAMP/1930	
ENG6 CHATTOOGA 86 E-60		05/26	ETHAN BEAID	2	EAST CAMP/0730	EAST CAMP/1930	
ENG6 NMSNF - ENGINE 661 E-604		05/26	LARRY MARTINEZ	3	EAST CAMP/0730	EAST CAMP/1930	
ENG6 - BANKHEAD E611 E-654		05/26	GARY CRAIG MOORE	3	EAST CAMP/0730	EAST CAMP/1930	
ENG6 - NMCIF - ENGINE 631 E-612		05/26	RICK F LUCERO	3	EAST CAMP/0730	EAST CAMP/1930	
ENG6 - DODGE 5500 ENGINE - T6 - ENGINE 603 E-662		05/27	MARK FRIZZELL	3	EAST CAMP/0730	EAST CAMP/1930	
ENG6 AR-OZF BM - E-651 E-713		05/29	PAUL DZIEKAN	3	EAST CAMP/0730	EAST CAMP/1930	
WTS1 - 357 - PB 350505 HASSELL E-476		05/26	ROBERT EDENFIELD	1	EAST CAMP/0730	EAST CAMP/1930	
WT1 - VIN# 26825 E-408		05/28	RICHARD PETERS	1	EAST CAMP/0730	EAST CAMP/1930	
WTT1 - VIN# E-588		05/26	HUBERT EDENFIELD HASSELLCO	1	EAST CAMP/0730	EAST CAMP/1930	
DO22 - 750K - VIN# 242515 E-505		05/24	BRIAN JENKINS	1	EAST CAMP/0730	EAST CAMP/1930	
8. Division/Group Communication Summary							
Function	Channel	RX Frequency N/W	RX Tone/NAC	TX Frequency N/W	TX Tone/NAC	Mode	
AIR TO GROUND	4	169.2000N	NONE	169.2000N	NONE	A	
COMMAND	8	159.2700N	156.7	151.1000N	123.0	A	
TACTICAL	9	159.2850N	NONE	159.2850N	156.7	A	
AIR TO GROUND	14	166.6750N	NONE	166.6750N	NONE	A	
AIR TO GROUND	15	169.1500N	NONE	169.1500N	NONE	A	
AIR GUARD	16	168.6250N	NONE	168.6250N	110.9	A	
9. Prepared By (Resource Unit Leader)			Approved By (Planning Section Chief)			Date	Time
SHAUN STEWART			DUANE DURGEE			05/23/2017	1128

Division/Group Assignment List (ICS 204 WF)

1. Incident Name:			3.			
WEST MIMS			Branch:		Division/Group:	
2. Operational Period: DAY SHIFT 0730-1930			IV		Y	
Date/Time From: 05/24/2017 0730 WED		Date/Time To: 05/24/2017 1930 WED				
4. Operations Personnel						
PLANNING OPERATIONS CHIEF		TRENT INGRAM PHIL DANIELS (T)		OPERATIONS CHIEF		RICK DOLAN EAST - FRED BOEHM
BRANCH DIRECTOR		STEVE MILLER		DIVISION/GROUP SUPERVISOR		RANDY GREGORY SEAN BASSO (T)
SAFETY		LARRY CONNELL		AIR TACTICAL GROUP SUPERVISOR		MARK NUNEZ, KEN MCLAUGHLIN
5. Resources Assigned this Period						
Strike Team / Task Force / Resource Designator		LWD	Leader	Number Persons	Drop Off PT./Time	Pick Up PT./Time
DO22 - 650K - VIN# 271777 E-528		05/25	KURT HALL	1	EAST CAMP/0730	EAST CAMP/1930
DO22 - 750K - VIN# 271777 E-530		05/26	GREG DAVIS	1	EAST CAMP/0730	EAST CAMP/1930
DO22 - JD 750K - VIN# 268173 E-504		05/25	JAIME EDENFIELD	1	EAST CAMP/0730	EAST CAMP/1930
EXCA T1 - VIN# 470405 HASSELL E-620		05/26	GREG DAVIS	1	EAST CAMP/0730	EAST CAMP/1930
SKG4 - MS-MSR-E611 E-652		05/28	REBECCA GOOSMAN	2	EAST CAMP/0730	EAST CAMP/1930
GOAT 1 - UTV PENDER LAND E-797		06/01	KEVIN CROOM	1	EAST CAMP/0730	EAST CAMP/1930
GOAT 2 - UTV ENDICOTT E-798		06/01	THOMAS ENDICOTT	1	EAST CAMP/0730	EAST CAMP/1930
TFLD O-508		05/30	LISA M GOWE	1	EAST CAMP/0730	EAST CAMP/1930
TFLD O-619		05/29	JOSH GOLDSTEIN	1	EAST CAMP/0730	EAST CAMP/1930
STEN O-423		05/22	MATT SMITH	1	EAST CAMP/0730	EAST CAMP/1930
EMPF E-376		05/24	PAUL PUGH	1	EAST CAMP/0730	EAST CAMP/1930
SOF2 O-461		05/24	LARRY KLOCK	1	EAST CAMP/0730	EAST CAMP/1930
SOF2 O-494		05/29	DARROLL ABEYTA	1	EAST CAMP/0730	EAST CAMP/1930
8. Division/Group Communication Summary						
Function	Channel	RX Frequency N/W	RX Tone/NAC	TX Frequency N/W	TX Tone/NAC	Mode
AIR TO GROUND	4	169.2000N	NONE	169.2000N	NONE	A
COMMAND	8	159.2700N	156.7	151.1000N	123.0	A
TACTICAL	9	159.2850N	NONE	159.2850N	156.7	A
AIR TO GROUND	14	166.6750N	NONE	166.6750N	NONE	A
AIR TO GROUND	15	169.1500N	NONE	169.1500N	NONE	A
AIR GUARD	16	168.6250N	NONE	168.6250N	110.9	A
9. Prepared By (Resource Unit Leader)			Approved By (Planning Section Chief)		Date	Time
SHAUN STEWART			DUANE DURGEE		05/23/2017	1128

Division/Group Assignment List (ICS 204 WF)

1. Incident Name:			3.			
WEST MIMS			Branch:		Division/Group:	
2. Operational Period: DAY SHIFT 0730-1930			IV		Y	
Date/Time From: 05/24/2017 0730	WED	Date/Time To: 05/24/2017 1930	WED			
4. Operations Personnel						
PLANNING OPERATIONS CHIEF		TRENT INGRAM PHIL DANIELS (T)		OPERATIONS CHIEF		
BRANCH DIRECTOR		STEVE MILLER		DIVISION/GROUP SUPERVISOR		
SAFETY		LARRY CONNELL		AIR TACTICAL GROUP SUPERVISOR		
				RICK DOLAN EAST - FRED BOEHM		
				RANDY GREGORY SEAN BASSO (T)		
				MARK NUNEZ, KEN MCLAUGHLIN		
6. Control Operations/Work Assignments:						
Task						
<ul style="list-style-type: none"> • Respond to any new starts within the division. • Patrol and mop up fuels appropriate to fuel type and anticipated weather and fire behavior. Eliminate obvious smoke which will trigger unnecessary calls to 911 system. 						
Purpose						
<ul style="list-style-type: none"> • Keep fire within established fire containment lines. 						
End State						
<ul style="list-style-type: none"> • Fire is contained by adequate control line to reduce threat to escape; minimizing damage to private timberlands, private lands, and other resource values at risk. • 						
7. Special Instructions:						
<p>Ensure LCES is in place before operations begin and stay hydrated. Drive defensively and with lights on at all times. Identify escape routes. Bridge near DP 9 restricted to pickups - No engines. Bridge on swamp perimeter road just east of first Branch has steep drop offs - 1 lane travel - watch for barricades.</p> <p>Use caution when working around logging operations.</p> <p>For IA protocol see page 7</p> <p>Medical Emergency Channel: Command ETA for Ambulance to Scene: Air: 20 – 30 mins Ground: 10 - 15 mins Paved roads only. IWI – IC or approved person will use Channel 16 (Air Guard) for contact with air ambulance Air Ambulance landing zone to be determined by IWI – IC Utilize engines to provide dust abatement, as needed, prior to air ambulance landing</p>						
8. Division/Group Communication Summary						
Function	Channel	RX Frequency N/W	RX Tone/NAC	TX Frequency N/W	TX Tone/NAC	Mode
AIR TO GROUND	4	169.2000N	NONE	169.2000N	NONE	A
COMMAND	8	159.2700N	156.7	151.1000N	123.0	A
TACTICAL	9	159.2850N	NONE	159.2850N	156.7	A
AIR TO GROUND	14	166.6750N	NONE	166.6750N	NONE	A
AIR TO GROUND	15	169.1500N	NONE	169.1500N	NONE	A
AIR GUARD	16	168.6250N	NONE	168.6250N	110.9	A
9. Prepared By (Resource Unit Leader)			Approved By (Planning Section Chief)		Date	Time
SHAUN STEWART			DUANE DURGEE		05/23/2017	1128

Division/Group Assignment List (ICS 204 WF)

1. Incident Name:			3.			
WEST MIMS			IV		Z	
2. Operational Period: DAY SHIFT 0730-1930						
Date/Time From: 05/24/2017 0730 WED		Date/Time To: 05/24/2017 1930 WED				
4. Operations Personnel						
PLANNING OPERATIONS CHIEF		TRENT INGRAM PHIL DAVIS (T)		OPERATIONS CHIEF		RICK DOLAN EAST - FRED BOEHM
BRANCH DIRECTOR		STEVE MILLER		DIVISION/GROUP SUPERVISOR		JASON LONGFELLOW
SAFETY		LARRY CONNELL		AIR TACTICAL GROUP SUPERVISOR		MARK NUNEZ, KEN MCLAUGHLIN
5. Resources Assigned this Period						
Strike Team / Task Force / Resource Designator		LWD	Leader	Number Persons	Drop Off PT./Time	Pick Up PT./Time
ENG6 - 361 E-775		05/29	DAVID T MARBERT	3	EAST CAMP/0730	EAST CAMP/1930
ENG6 - NMN2S - E 2-2 E-767		05/29	MAYLON BERT BROWN	2	EAST CAMP/0730	EAST CAMP/1930
ENG6 - OLF - E-692 E-482		06/06	JODI STONE	4	EAST CAMP/0730	EAST CAMP/1930
ENG6 - BOULDER COUNTY SHERIFF - ENGINE 6532 E-538		05/24	PETER KORETZ	3	EAST CAMP/0730	EAST CAMP/1930
ENG6 - FOUR MILE FD - BRUSH 4632 E-540		05/24	ZACH LITTLEFIELD	3	EAST CAMP/0730	EAST CAMP/1930
ENG6 - OH-OHS E-62 E-761		05/28	JEFFREY G TUCKER	6	EAST CAMP/0730	EAST CAMP/1930
ENG6 - AR-OUF - PCS - E-692 E-737		05/29	MATTHEW MICHAEL KAMPF	3	EAST CAMP/0730	EAST CAMP/1930
EXCA T3 - VIN# GXHFE E-622		05/25	BUCK TODDENBERRY	1	EAST CAMP/0730	EAST CAMP/1930
DOZ3 - VIN# 302873 E-623		05/25	KELLY PITTMAN	1	EAST CAMP/0730	EAST CAMP/1930
WTT2 - VIN# 009542 E-409		05/26	ANTHONY PALVICK	1	EAST CAMP/0730	EAST CAMP/1930
WTT2 (TACTICAL) - VIN# 9250 E-574		06/02	TONY TIPTON	1	EAST CAMP/0730	EAST CAMP/1930
WTT2 - FARRELL TIMBER - VIN# 557261 E-410		05/27	BENJAMIN JOHNS	1	EAST CAMP/0730	EAST CAMP/1930
WTS2 - BLACK RANGE E-642		05/29	BRANDON SHEPPERD	1	EAST CAMP/0730	EAST CAMP/1930
TPL3 NC-NCS - 3X77 E-568		06/06	DENNIS REES	2		
8. Division/Group Communication Summary						
Function	Channel	RX Frequency N/W	RX Tone/NAC	TX Frequency N/W	TX Tone/NAC	Mode
AIR TO GROUND	4	169.2000N	NONE	169.2000N	NONE	A
COMMAND	8	159.2700N	156.7	151.1000N	123.0	A
TACTICAL	10	168.3500N	NONE	168.3500N	NONE	A
AIR TO GROUND	14	166.6750N	NONE	166.6750N	NONE	A
AIR TO GROUND	15	169.1500N	NONE	169.1500N	NONE	A
AIR GUARD	16	168.6250N	NONE	168.6250N	110.9	A
9. Prepared By (Resource Unit Leader)			Approved By (Planning Section Chief)		Date	Time
SHAUN STEWART			DUANE DURGEE		05/23/2017	1128

Division/Group Assignment List (ICS 204 WF)

1. Incident Name:			3.			
WEST MIMS			Branch:		Division/Group:	
2. Operational Period: DAY SHIFT 0730-1930			IV		Z	
Date/Time From: 05/24/2017 0730 WED		Date/Time To: 05/24/2017 1930 WED				
4. Operations Personnel						
PLANNING OPERATIONS CHIEF		TRENT INGRAM PHIL DAVIS (T)		OPERATIONS CHIEF		RICK DOLAN EAST - FRED BOEHM
BRANCH DIRECTOR		STEVE MILLER		DIVISION/GROUP SUPERVISOR		JASON LONGFELLOW
SAFETY		LARRY CONNELL		AIR TACTICAL GROUP SUPERVISOR		MARK NUNEZ, KEN MCLAUGHLIN
5. Resources Assigned this Period						
Strike Team / Task Force / Resource Designator		LWD	Leader	Number Persons	Drop Off PT./Time	Pick Up PT./Time
TPL3 NC-NCS - 3X65 E-569		06/06		2		
TPL3 - WILDLANDS FIRE SRVC INC - 99744 E-465		05/29	SAM STRICKLAND	2	EAST CAMP/0730	EAST CAMP/1930
TFLD (T) O-513		05/24	NEIL CLINEMAN	1	EAST CAMP/0730	EAST CAMP/1930
STEN O-658		05/29	JAMES T ALLISON	1	EAST CAMP/0730	EAST CAMP/1930
STEN O-414		05/23	TIEGE DOWNES	1	EAST CAMP/0730	EAST CAMP/1930
STEQ O-662		05/31	WILLIAM BOJORQUES	1	EAST CAMP/0730	EAST CAMP/1930
STEQ O-602		05/28	STEVE TEIGEN	1	EAST CAMP/0730	EAST CAMP/1930
STEQ (T) O-613		05/28	DANIEL GALLAGHER	1	EAST CAMP/0730	EAST CAMP/1930
EMPF E-314 602-571-2505		05/30	JOHN HECK	1	EAST CAMP/0730	EAST CAMP/1930
SOF2 505-470-2012 O-494		05/29	DARROLL ABEYTA	1	EAST CAMP/0730	EAST CAMP/1930
8. Division/Group Communication Summary						
Function	Channel	RX Frequency N/W	RX Tone/NAC	TX Frequency N/W	TX Tone/NAC	Mode
AIR TO GROUND	4	169.2000N	NONE	169.2000N	NONE	A
COMMAND	8	159.2700N	156.7	151.1000N	123.0	A
TACTICAL	10	168.3500N	NONE	168.3500N	NONE	A
AIR TO GROUND	14	166.6750N	NONE	166.6750N	NONE	A
AIR TO GROUND	15	169.1500N	NONE	169.1500N	NONE	A
AIR GUARD	16	168.6250N	NONE	168.6250N	110.9	A
9. Prepared By (Resource Unit Leader)			Approved By (Planning Section Chief)		Date	Time
SHAUN STEWART			DUANE DURGEE		05/23/2017	1128

Division/Group Assignment List (ICS 204 WF)

1. Incident Name:			3.			
WEST MIMS			Branch:		Division/Group:	
2. Operational Period: DAY SHIFT 0730-1930			IV		Z	
Date/Time From: 05/24/2017 0730 WED		Date/Time To: 05/24/2017 1930 WED				
4. Operations Personnel						
PLANNING OPERATIONS CHIEF		TRENT INGRAM PHIL DAVIS (T)		OPERATIONS CHIEF		RICK DOLAN EAST - FRED BOEHM
BRANCH DIRECTOR		STEVE MILLER		DIVISION/GROUP SUPERVISOR		JASON LONGFELLOW
SAFETY		LARRY CONNELL		AIR TACTICAL GROUP SUPERVISOR		MARK NUNEZ, KEN MCLAUGHLIN
6. Control Operations/Work Assignments:						
Task						
<ul style="list-style-type: none"> Respond to any new starts within the division. Patrol and mop up fuels appropriate to fuel type and anticipated weather and fire behavior. Rehabilitate contingency line. 						
Purpose						
<ul style="list-style-type: none"> Keep fire within established fire containment lines. 						
End State						
<ul style="list-style-type: none"> Fire is contained by adequate control line to reduce threat to escape; minimizing damage to private timberlands, private lands, and other resource values at risk. 						
7. Special Instructions:						
Use caution when working around logging operations.						
Medical Emergency Channel: Command ETA for Ambulance to Scene: Air: 20 – 30 mins Ground: 10 - 15 mins Paved roads only. IWI – IC or approved person will use Channel 16 (Air Guard) for contact with air ambulance Air Ambulance landing zone to be determined by IWI – IC Utilize engines to provide dust abatement, as needed, prior to air ambulance landing						
For IA protocol see page 7						
2 - TPL Okie - O/H Donnie Harris DIVS 1 - 1050 KG - with operator GFC 1 - Appalachia 750 (Lease) with operator STEQ with 3-T2 Tractor Plow STEQ (Weaver) with 4-T3 Tractor Plow						
8. Division/Group Communication Summary						
Function	Channel	RX Frequency N/W	RX Tone/NAC	TX Frequency N/W	TX Tone/NAC	Mode
AIR TO GROUND	4	169.2000N	NONE	169.2000N	NONE	A
COMMAND	8	159.2700N	156.7	151.1000N	123.0	A
TACTICAL	10	168.3500N	NONE	168.3500N	NONE	A
AIR TO GROUND	14	166.6750N	NONE	166.6750N	NONE	A
AIR TO GROUND	15	169.1500N	NONE	169.1500N	NONE	A
AIR GUARD	16	168.6250N	NONE	168.6250N	110.9	A
9. Prepared By (Resource Unit Leader)			Approved By (Planning Section Chief)		Date	Time
SHAUN STEWART			DUANE DURGEE		05/23/2017	1128

AIR OPERATIONS SUMMARY (ICS220)

Prepared by: John Bragg

Prepared Date: 5/23/2017

Prepared Time: 17:00

1. INCIDENT NAME: West Mims	2. OPS PERIOD DATE: 5/24/17	START TIME: 0900	END TIME: 1900	SUNRISE: 0628	SUNSET TIME: 2021 (Folkston)
3. REMARKS Safety Notes: Hazards (SEE AND AVOID GENERAL AVIATION TRAFFIC AND AERIAL HAZARDS) -Maintain clear communications; confirm that drop location is clear; ground personnel state: "Clear to Drop" -Incident Aircraft conduct flight following with Pogo Helibase when ATGS is not up. -Aerial Ignition Group: Helicopter 1FW with PLDO; FIRB, Jon King. ORDERING/FLIGHT REQUESTS -Request Helicopter water drops through Air Attack -Request aerial ignition through Operations -Request Tankers/Retardant through Air Attack -Requests for Reconnaissance missions must go through Operations for pre-approval E-MAIL AIRCRAFT COSTS DAILY AT END OF SHIFT TO: al_d2011@yahoo.com			4. READY ALERT AIRCRAFT: 2BH Call 911 to request LIFEFLIGHT aircraft.		5. TFR: 7/1766; Surface to 3500' MSL; See NOTAM for full description. Frequency 120.8500

6. PERSONNEL	NAME	PHONE #	7. FREQUENCIES	AM	FM	8. FIXED-WING- Type/ Make-Model/ N#/ Base
AOBD	John Bragg Air Ops Desk	423-483-2798 912-637-5133	A/A - Fixed Wing A/A - Rotor / TFR A/G (Request) A/G 66 (Primary) A/G 72 (Secondary)	120.3500 120.8500	 169.2000 166.6750 169.1500	AIR ATTACK – ATGS – Mark Nunez / AC690 / N690RA / LCQ 805-975-5227 ATGS – Ken McLaughlin / Kodiak / N420Q / LCQ 813-997-0317
ASGS	Al Driesbach	805-703-0649				LEAD – ASM – Bravo xx As assigned
HEB2 - Pogo HEB2(T) - Pogo HEB1 - Lake City	Grady Wilson David Aldrich Brad Nelson	208-880-1725 520-490-8638 559-349-6793	Deck/TOLC (Pogo) Deck (Lake City)		168.0500 163.100	TANKERS – As available (T-01) BAE146 / N473NA / LCQ (Off Sundays) (T-02) BAE146 / N474NA / LCQ (Off Mondays) (T-164) RJ-85A / N374AC / LCQ (Off Thursdays) (T-911) DC-10 / N17085 / CHA (Off Sat. & Sun.)
	Pogo Helibase	912-496-4415				
	Lake City Helibase	561-512-6333	Air Guard		168.625 (110.9)	

9. HELICOPTER Remarks Box Legend: C=Cargo P=Passengers B=Bucket SN=Snorkel R=Rappel H=Hoist SH=Short Haul ME=Medical Evacuation/Extraction Exu=Exclusive Use

FAA N#	T Y	MAKE/ MODEL	BASE	START	READY to FLY	REMARKS	FAA N#	T Y	MAKE/ MODEL	BASE	START	READY to FLY	REMARKS
132BH	3	AS350 B3	Pogo (3GE1)	0700	0830	P, B Exu	13FH	1	UH-60A	Lake City (LCQ)	0700	0730	B Exu
351FW	3	AS350 B2	Pogo (3GE1)	0700	0830	P, B Exu	611CK (701)	1	SH-3H / S-61	Lake City (LCQ)	0700	0730	SN Exu
471CH	1	CH-47D	Lake City (LCQ)	0700	0730	SN Exu	612CK (702)	1	SH-3H / S-61	Lake City (LCQ)	0700	0730	SN *On Loan
161KA	1	K-1200	Lake City (LCQ)	0700	0730	B Exu	137BH	1	S70A-27	Lake City (LCQ)	0700	0730	B *On Loan
699RH	1	K-1200	Lake City (LCQ)	0700	0730	B Exu	472CH	1	CH-47D	Lake City (LCQ)	0700	0730	SN *On Loan

INCIDENT RADIO COMMUNICATIONS PLAN (ICS 205)

1. Incident Name:			2. Date/Time Prepared:			3. Operational Period: DAY SHIFT 0730-1930				
WEST MIMS			Date: 05/23/2017 Time: 1620			Date/Time From: 05/24/2017 0730 WED			Date/Time To: 05/24/2017 1930 WED	
4. Basic Radio Channel Use:										
Zone Group	Ch #	Function	Channel Name/Trunked Radio System Talkgroup	Assignment	RX Freq	RX Tone/NAC	TX Freq	TX Tone/NAC	Mode (A,D, or M)	Remarks
1 WEST	1	COMMAND	WEST OKEE REP		167.1250N	156.7	163.1500N	156.7	M	STEPHEN FOSTER STATE PARK
1 WEST	2	COMMAND	S. FOSTER	DIV D	159.1200N	NONE	151.3700N	100.0	A	WEST ROAD MAINTENANCE FL FFS CONTINGENCY
1 EAST	3	COMMAND	CORNELIA		159.1200N	NONE	151.3700N	82.5	A	
1 ALL DIVISIONS	4	AIR TO GROUND	A/G REQUEST	ALL DIVISIONS	169.2000N	NONE	169.2000N	NONE	A	
1	5	COMMAND	GFC EDDY	GA FORESTRY	159.4650N	NONE	151.1450N	123.0	A	GA FORESTRY ONLY
1	6	TACTICAL	GFC TAC 1	WEST ROAD MAINT	159.3900N	NONE	159.3900N	156.7	A	FL FFS CONTINGENCY
1	7	TACTICAL	V FIRE 26		154.3025N	NONE	154.3025N	156.7	A	
1	8	TACTICAL	OSCEOLA PROJECT		163.7125N	NONE	163.7125N	NONE	A	
1	9	TACTICAL	SE COMPACT		159.2850N	NONE	159.2850N	156.7	A	
1	10	TACTICAL	REFUGE TAC 1		168.3500N	NONE	168.3500N	NONE	A	
1	11	TACTICAL	REFUGE TAC 2		163.1000N	NONE	163.1000N	NONE	A	
1	12	TACTICAL	FFS 199		159.4425N	NONE	159.4425N	NONE	A	
1 WEST	13	TACTICAL	FFS 200	DIV D	159.4125N	NONE	159.4125N	NONE	A	
1 ALL DIVISIONS	14	AIR TO GROUND	AIR TO GRD 66	A/G PRIMARY	166.6750N	NONE	166.6750N	NONE	A	AIR TO GROUND PRIMARY
1 ALL DIVISIONS	15	AIR TO GROUND	AIR TO GRD 72	A/G SECONDARY	169.1500N	NONE	169.1500N	NONE	A	AIR / GROUND SECONDARY
1 ALL DIVISIONS	16	AIR GUARD	AIR GUARD	ALL DIVISIONS	168.6250N	NONE	168.6250N	110.9	A	EMERGENCY AIRCRAFT COMMUNICATIONS
5. Special Instructions:										
6. Prepared By (Communications Unit Leader)				Name: PAUL NOA				Signature:		
ICS 205				IAP Page				Date/Time: 05/23/2017 1620		

INCIDENT RADIO COMMUNICATIONS PLAN (ICS 205)

1. Incident Name:	2. Date/Time Prepared:	3. Operational Period: DAY SHIFT 0730-1930	
WEST MIMS	Date: 05/23/2017 Time: 1605	Date/Time From: 05/24/2017 0730 WED	Date/Time To: 05/24/2017 1930 WED

4. Basic Radio Channel Use:

Zone Group	Ch #	Function	Channel Name/Trunked Radio System Talkgroup	Assignment	RX Freq	RX Tone/NAC	TX Freq	TX Tone/NAC	Mode (A,D, or M)	Remarks
2	1	TACTICAL	V FIRE 21	INITIAL ATTACK	154.2800N	NONE	154.2800N		A	INITIAL ATTACK W/ OSCEOLA NF
2 WEST	2	COMMAND	S. FOSTER		159.1200N	NONE	151.3700N	100.0	A	
2 EAST	3	COMMAND	CORNELIA	J,K,L,M,N,O, SWING	159.1200N	NONE	151.3700N	82.5	A	STAGING, INITIAL ATTACK
2 ALL DIVISIONS	4	AIR TO GROUND	A/G REQUEST	ALL DIVISIONS	169.2000N	NONE	169.2000N	NONE	A	BY REQUEST ONLY
2	5	COMMAND	GFC EDDY	GA FORESTRY	159.4650N	NONE	151.1450N	123.0	A	GA FORESTRY ONLY
2 EAST	6	COMMAND	GA BEND	UNASSIGNED	159.2700N	156.7	151.1000N	156.7	A	
2 NORTH	7	COMMAND	FARGO RPT		159.2700N	156.7	151.1000N	100.0	A	
2 SOUTH	8	COMMAND	BAKER RPT	DIV A, Y, Z, DIV B	159.2700N	156.7	151.1000N	123.0	A	SWING, DIV C
2	9	TACTICAL	COMPACT	DIV Y	159.2850N	NONE	159.2850N	156.7	A	DIV M, DIV C
2	10	TACTICAL	REFUGE TAC 1	DIV N, DIV Z	168.3500N	NONE	168.3500N	NONE	A	STAGING
2	11	TACTICAL	OSCEOLA PROJECT	DIV O	163.7125N	NONE	163.7125N	NONE	A	
2	12	TACTICAL	FFS 199	INITIAL ATTACK	159.4425N	NONE	159.4425N	NONE	A	SWING, DIV A, STRUCTURE PROTECTION GROUP
2	13	TACTICAL	FFS 200	DIV B, J, K, L	159.4125N	NONE	159.4125N	NONE	A	
2 ALL DIVISIONS	14	AIR TO GROUND	AIR TO GRD 66	A/G PRIMARY	166.6750N	NONE	166.6750N	NONE	A	AIR / GROUND PRIMARY
2 ALL DIVISIONS	15	AIR TO GROUND	AIR TO GRD 72	A/G SECONDARY	169.1500N	NONE	169.1500N	NONE	A	AIR / GROUND SECONDARY
2 ALL DIVISIONS	16	AIR GUARD	AIR GUARD	ALL DIVISIONS	168.6250N	NONE	168.6250N	110.9	A	EMERGENCY AIRCRAFT COMMUNICATIONS

5. Special Instructions:

WEST MIMS DAY PLAN

6. Prepared By (Communications Unit Leader)	Name: PAUL NOA	Signature:
ICS 205	IAP Page	Date/Time: 05/23/2017 1605

PHONE LIST - WEST MIMS FIRE

Position	Name	Phone Number	Position	Name	Phone Number
UNIFIED COMMAND			Finance	General	912-637-5109
NIMO IC	Mike Quesinberry	540-230-1262	NIMO Fin Chief	Carla Schamber	202-631-2254
Southern States IC	Keith Mousel	352-442-2891	Fin Chief	Betty Palmiotto	850-408-6564
Liason Officer	Daniel Stanley	850-661-1674	Dep Fin Chief	Dawn Croch	352-206-5634
Liason Officer	Mark Allen Dozier	478-251-4015	Comp/Claims	Brett Steffen	941-531-0053
Liason Officer	Paul Stevens	252-216-6316	Procurment	Tommy Price	863-661-4019
PUBLIC INFORMATION			Time	Marci Glover	850-373-8254
Information Desk					
NIMO Public Information	Judith Downing	530-908-5128	Telephone lines at ICP		
Public Information	Annaleasa Winter	904-705-3931	Information/PIO		912-637-5132
Refuge Public Info	Susie Heisey	912-286-3110	Information		912-637-5108
AGENCY REPRESENTATIVES			Air Ops		912-637-5133
Refuge FMO	Reese Kerbow	912-276-0167	Ordering		912-637-5107
Refuge AFMO	Reggie Forcine	912-614-4041	Ordering		912-637-5136
Refuge Manager	Mike Lusk	912-390-2193	Ordering Fax		912-637-5104
DNR Agency Liaison	SGT. Patrick Dupree	404-694-5596	Supply		912-637-5138
Ware Co EMA	Bill Parham	229-425-4549	Ground Support		912-637-5105
Clinch Co EMA	Will Joyce	912-520-8581	Finance		912-637-5109
Lanier Co EMA	Randy Patten	229-482-5070	Finance Fax		912-637-5110
Charlton Co EMA	Bruce Young	912-390-2022	Operations		912-637-5112
Charlton Co Sheriff's Office	Inv. Clay Burnsel	912-276-2628	Plans FAX		912-637-5115
Georgia EMA	Diane Adams	912-266-5421	Plans / Checkin		912-637-5137
NC-Forest Service	Greg Smith	828-230-8527	Demob		912-637-5113
Billy Estep	EMS Dir/Nassau Coun	904-813-3476	Communications		912-637-5116
Baker Co EMA	Beck Parker	904-955-6454			
PLANNING			Telephone lines at Eastside Camp		
NIMO PSC	Darrel Schwillig	404-805-3159	Operations		912-496-2278
PSC ICP	Duane Durgee	352-278-0446	Supply		912-496-3116
PSC Eastside Camp	Joe Bishop	352-516-9767	Communications		912-496-2293
PSC ICP (T)	Jason Braunstein	434-249-9915	Medical		912-496-2289
Fire Behavior Analyst	Bradley Smith	470-366-6313			
Fire Behavior Analyst(t)	Matt Filbert	208-720-7248	LAND OWNERS AND OTHER CONTACTS		
Fire Behavior Analyst(t)	Andrew Taylor	541-219-1205	Steve Davis	Am Forest Mgmt	912-614-1828
IMET	Joe Guoudsward	240-778-5279	Allen C. Cross	Rayonier US Forest	904-796-7929
THSP-ARA	Dan Byrd	240-778-5278	Dave Gather	Okie Electric	912-390-9755
READ	Rocky Chesser	912-276-3232	Chad Edwards	N Fork Southern RR	540-797-9918
FWS READ	Carl Schmidt	478-365-2088	Bryan Robbins	CSX RR	912-387-3910
FWS READ	Daniel Barrand	352-490-1959	Steve Magnolia	FD Coordinator	904-537-5853
FWS READ	Howard McClough	912-276-0552	Terri Jenkins	FWS FD/VFD Contact	912-313-4225
FWS READ	Erin Daughtrey	912-223-6752	Ned Neenan	Legacy Forestry	352-317-0738
SITL	Scott Crosby	352-275-4332	Ken Zaydel	Social Circle FD	404-205-2738
SITL	Stuart Coombs	936-827-4233	Royce Proctor	OKE Electric Coop	912-282-6873
GISS	Domonic Marcanio	850-380-1656		Okefenokee NWR	912-496-7366
Training Specialist	David Hunt	863-221-6146	Adam McCullough	NWR IA Duty Off	912-496-4177
GISS	Brendan Mullholland	352-255-9094	SFSP	Bryan Grey	912-637-5274
ITSS	Randy Fountain	850-591-9130	GOAL	Jim Barrett	229-356-1993
ITSS	Dean Groe	407-617-7342			Ver 24May17

PHONE LIST WEST MIMS FIRE

Position	Name	Phone Number	Position	Name	Phone Number
OPERATIONS	Land Line	912-637-5112	SAFETY		
NIMO Ops	Kyle Smith	540-855-0233	NIMO Safety Officer	Gene Madden	404-805-7970
Lead Ops	Rick Dolan	352-353-5101	Safety Officer	Larry Grubbs	850-228-7755
West Field Lead Ops	Buck Kline	912-678-2694	Safety Officer	Larry Connell	352-303-3921
East Field Lead Ops	Fred Boehm	954-347-8071	Safety Officer (t)	Clay Stephens	702-575-0392
Planning Ops	Trent Ingram	229-726-0285	LOGISTICS		
Planning Ops (t)	Phil Daniels	720-315-4240	NIMO Logistics Chief	Sally Browning	404-805-5063
Structure	Aaron Guy	252-312-4369	Logistics Chief East Camp	Jim Peters	352-942-7218
Branch I	Ron Garcia	559-392-1045	Logistics Section Chief (t)	David McVay	850-625-5142
Division B	Ron Calhoun	478-290-9755	Facilities Unit Leader	Dennis Evans	478-957-9709
Division C	Chris Roberts	912-213-3138	Supply Unit Leader	Travis Shidal	
Division D	Walter Bowers	850-625-6630	East Camp Grd Support	Douglas Crocker	352-235-2352
IA Group	Greg Buckalew	252-475-8012	Ground Spt Unit Ldr	Charles Weathers (nights)	
IA Group (t)	Arturo Gasdik	707-834-8205	Ground Spt Unit Ldr	Mike Stigler	386-837-2289
Road Maint Group	Candice Kutrosky	719-651-0669	Ground Spt Unit Ldr	Glen Simmons	386-855-0379
			East Camp Grd Support	Mike Nelson	484-880-7494
Branch III	Marc Crain	720-315-4240	Ordering Manager	Mark McClellan	478-733-2606
Division M	David Smith	850-686-2970	Food Unit Leader	Steve Marshall	352-464-2721
Division N	Karen Scholl	909-553-7731	Security Manager	Greg Blanks	912-346-7367
Division N (t)	Chris Rankin	307-359-1997	Medical Unit Leader	Steve Russo	917-923-3980
Division O	Shawn Alexander	678-897-9137	Medical Unit Leader	Rich Dorazio	470-366-6302
Division O(t)	Michael Gue	305-338-6069	East Medical Unit Leader	Travis McGowen	321-863-7566
IA Group	Greg Buckalew		Communications Unit	24 Hour	912-637-5116
STAM Eastside Camp	Chris Rudd	541-660-0634	Communications Unit Ldr	Charles Radcliff	386-330-4162
North Ambulance/Oken EMS		470-532-8797	Communications Unit Ldr (t)	Paul Noa	850-276-5428
Branch IV	Steve Miller	386-937-0554	INCM	Mike Shipley	678-357-9814
			East Camp Communications		470-366-6306
Division A(t)	Jeff Bostwick	575-694-0280			
Division Y	Randy Gregory	850-519-3330	FOBS Lead	Lew Becker	541-815-2909
Division Z	Jason Longfellow	386-212-9871	FOBS	Brad Schuette	530-351-5306
Division Z(t)			FOBS	Reed Heckly	509-690-1242
Division A/Y/Z Swing			FOBS	Evan Haugan	406-788-9983
Structure Group Swing			FOBS	Brian Boatman	
Refuge Advisor	Reggie Forcine	912-614-4041	FOBS	Jason Kanmann	
Florida Contingency	Keith Osteen		FOBS	Happy Hoppe	
FWS Contingency	Rocky Chesser	912-276-3232			
FFS Contingency	John Raulerson	386-292-5652			
FFS Contingency	Andy Lamborn	383-365-4441			
STAM Bethea	Adam Dummer	831-238-0991			
AIR OPERATIONS					
AOBD	John Bragg	423-483-2798			
ATGS	Ken McLaughlin	813-997-0317			
ATGS	Mark Nunez	805-975-5227			209-559-8184
ASGS	Al Driesback	805-703-0649			775-815-8050
HEB2-Pogo	Marc "Boomer" Rudkin	307-287-0440			530-921-4431
HEB1 - Lake City	Brad Nelson	559-349-6793			
Pogo Helibase (Hardline)		912-496-4415			
Lake City Helibase (Hardline)		561-512-6333			
		850-276-5428			
Ver 24May17					

HEALTH AND SAFETY MESSAGE

SAFETY starts with *YOU*

Every person must have a briefing prior to going on line

INCIDENT: West Mims Fire

DATE: Wednesday Day/Swing, May 24, 2017

- SITUATIONAL AWARENESS
- FATIGUE
- DRIVING & TRAFFIC
- SEVERE WEATHER
- RISK MANAGEMENT

The fire is much quieter now but one of the common denominators of tragedy fires is "...deceptively quiet areas of large fires". Keep situational awareness in place throughout the entire operational period as your location changes.

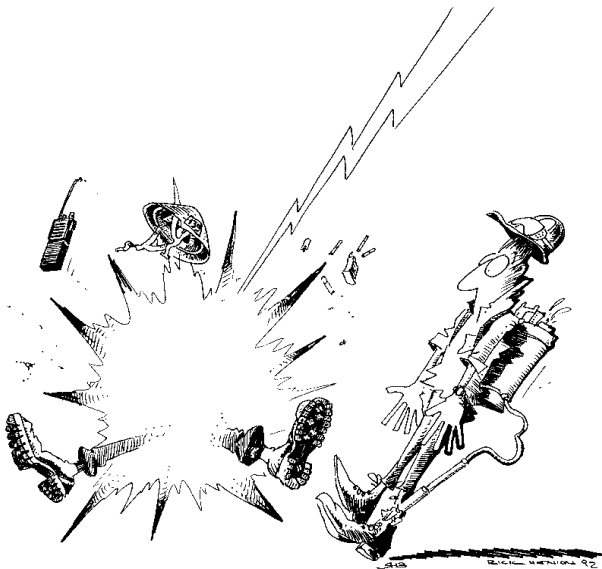
Fatigue starts to affect an individual after only a few days. Follow the work/rest guidelines and mitigate longer shifts as soon as possible.

We are driving many miles on this incident. Non-fire traffic won't pay sufficient attention to us so drive defensively with lights and seatbelts on at all times.

When thunderstorm development is likely, lookouts should be posted and aware of signs of a developing storm. A sudden reversal in wind direction, a noticeable rise in wind speed, and a sharp drop in temperature may note the mature stage of a storm.

Practice intentional risk management: assess hazards, identify consequences and the risk of occurrence, develop and implement controls....review your IRPG, Green Section, Page 1.

Severe Weather



4. UNFAMILIAR WITH WEATHER AND LOCAL FACTORS INFLUENCING FIRE BEHAVIOR

Happy Wednesday



INCIDENT SAFETY ANALYSIS 215a

West Mims Fire - Wednesday, May 24, 2017

8. Location	9. Hazard	6. Control or Abatement Action (Engineering, Administrative, PPE, Avoidance, Education, etc)
ALL	Train Traffic	<ul style="list-style-type: none"> ~Observe warning signs when crossing tracks. ~If no warning lights are posted, bring vehicle to a complete stop and check for incoming trains before crossing. ~Use caution when crossing tracks with low vehicles or trailers. ~Contact CSX to ensure awareness to fire resource locations.
ALL	Helicopter Operations	<ul style="list-style-type: none"> ~ Helicopter operations should be used for priority missions. ~ Stay clear of all bucket drops when suppression actions are in place and allow 1 minute prior to re-entry. ~ Pilots or air supervisor ensure ground resources are clear before bucket drops. ~ Monitor A-G communications. ~ Follow aviation safety guidelines in IRPG and IHOG. ~ Ground resources advise pilot of local power lines and local visibility issues.
A, B, C, D, O, Z, Contingency, IA	Power Utilities	<ul style="list-style-type: none"> ~ Notify all personnel of down electrical lines. ~ Refer to the IRPG page 24 for Power Line Safety. ~ Always treat downed wires as energized. ~ Identify and avoid high tension transmission lines. ~ In high winds or areas of dense smoke, avoid areas under power lines. ~ Be aware of utility restoration in your work area.
ALL	Air Operations	<ul style="list-style-type: none"> ~ Follow "Aviation Watch-Out Situations" on page 44, IRPG. ~ Don't plan on air resources for medical transport or resupply. ~ Ensure positive communication with all air resources. ~ Ensure communications are established with operators. ~ During airtanker operations clear the drop zone before approach of the lead plane.
ALL	Structure Protection & HAZMAT	<ul style="list-style-type: none"> ~ Review "Wildland Urban Interface" Watch outs, IRPG page 12. ~ Use "Structure Assessment" checklist, IRPG pages 13-15. ~ Follow "HAZMAT Incident Operations" on pages 34-36 in IRPG. ~ Identify and avoid damaged gas service near structures.
ALL & ICPs	Tornado	<ul style="list-style-type: none"> ~Take shelter immediately. ~Go to a pre-designated area such as a safe room, basement, storm cellar, or the lowest building level. ~Most injuries associated with high winds are from flying debris, so remember to protect your head. ~Wear your PPE. ~If shelter is unavailable or there is no time to get indoors, lie in a ditch or low-lying area or crouch near a strong building. ~get out of the vehicle and lie in a ditch or low-lying area away from the vehicle. ~Stay alert to the potential for flooding
B, C, O, Y	Logging Operations	<ul style="list-style-type: none"> ~Stay clear of active cutting operations. ~If re-burns occur, stop cutting operations before entering the area. ~Use caution when logging equipment is in the area or traveling on the roads. ~Maintain communication with logging operation during operational period. ~Logging operations have the potential to create new fire starts.
ALL & ICPs	Driving & Traffic	<ul style="list-style-type: none"> ~ Practice "Defensive Driving" techniques traveling on all roads and city streets. ~ Always use spotters when backing. ~ Honk horn to alert personnel when backing. ~ Keep clutter off dash and inside cab. ~ Follow Driving LCES (Lights, Chock blocks, Emergency brake, Seat belts. ~ Always use headlights. ~ Yield to pedestrians and bicycles. ~ Observe posted speed limits. ~ Use the 3 second rule for following distance when driving. ~ Use chock blocks, turn wheels into hill. ~ Avoid distractions (eating, cell phones, radio). ~ Ensure that windshields are kept clean of dust and bugs. ~Use caution when traveling on roads that are impacted by smoke or dusty conditions. ~When feasible, coordinate travel to and from the hotels to ensure two or more personnel travel together to mitigate long distances.
ALL	Cold Front Passage	<ul style="list-style-type: none"> ~Watch for wind shifts during the frontal passage. ~Be prepared for heavy rains associated with a wet cold front. ~Cold fronts generally move from northwest to southeast. ~The air behind a cold front is noticeably colder and drier than the air ahead of it.
ALL	Personal Hygiene	<ul style="list-style-type: none"> ~ Don't share personal items such as water bottles communication devices and utensils. ~ Wash hands before meals, and after use of rest room facilities.
ALL	Hazard Trees	<ul style="list-style-type: none"> ~ Follow "Hazard Tree Safety" guidelines, IRPG page 22. ~ Post lookouts, or use a spotter in mop-up areas with personnel. ~ Don't park vehicles or take breaks in high concentrations of hazard trees. ~ Establish trigger points for disengagement during high wind events. ~ Remember that the hazard zone extends a minimum of 2 1/2 tree heights. ~ When working in bay areas, be aware of cypress trees. There are reports of them beginning to fall, due to burned out root systems.

INCIDENT SAFETY ANALYSIS 215a

ALL	Swing Shift	<ul style="list-style-type: none"> ~ Maintain high visibility in work area and wear vest while in roadway. ~ Use glow sticks to mark hazards that are readily visible. ~ Ensure personnel have a personal light (headlamp). ~ Watch for signs of fatigue. ~ Take breaks away from areas of known hazards.
ALL	Fireline Hazards	<ul style="list-style-type: none"> ~ Establish and continue to validate LCES. ~ Avoid radiant heat by wearing appropriate PPE correctly. ~ Use correct tool for task assigned. ~ Follow power line safety protocol as outlined on page 24 in IRPG. ~ Flag and isolate all HAZMAT and alert all personnel working in Division. ~ Follow WUI recommendations on pages 10-11 in IRPG.
ALL	Injury & Medical Emergency	<ul style="list-style-type: none"> ~ Assist injured employee and provide appropriate medical care. ~ Use EMT's on Division for initial care. ~ Follow medical protocol as outlined in ICS-206 (IWI) & IRPG Pgs 99-108
ALL	Communications	<ul style="list-style-type: none"> ~ Maintain communication with aviation resources, and suppression organization. ~ Ensure all know frequency and protocol for contacting resources. ~ Use clear terminology, ask questions and ensure good understanding, especially with new resources. ~ Utilize the ICS 205. ~ Utilize human repeaters when working in dead spots. ~ Know who to contact in case of an emergency and practice the IWI protocol and 9 Line ~ Add Boom for Divisions E & F is necessary to improve communcations.
ALL	Heavy Equipment Operations	<ul style="list-style-type: none"> ~ Ensure communications are established with operators. ~ Use hand signals if other communications are unavailable. ~ Maintain a 50'-100' exclusion area around equipment and increase it to 1 1/2 times tree height when in timber. ~ Use a spotter when backing.
ALL	Poisonous Plants	<ul style="list-style-type: none"> ~ Identify and Avoid hazard areas. ~ Launder clothing. ~ Shower frequently.
ALL	Indirect Fire line	<ul style="list-style-type: none"> ~ Post lookouts, identify escape routes and safety zones (IRPG pg. 6). ~ Review "Strategy/Indirect Attack" (IRPG pg. 77).
ALL	Severe Weather	<ul style="list-style-type: none"> ~ Review and follow Thunderstorm Safety guidelines in IRPG page 21. ~ Observe 30/30 Rule for lightning safety.....page 21, IRPG. ~ Establish "Trigger Points" to withdraw, and ensure all know rally site. ~ Use "Risk Management" process to determine retreat criteria and actions. ~ Carry rain gear and extra food and water if weather limits retreat to ICP. Adhere to direction found in Tornadoe Safety and Evacuation Plan
ALL	Wildlife	<ul style="list-style-type: none"> ~ Watch out for wildlife inside fire area and along roadways including bears, alligators, snakes, hogs, and deer. ~ Clean up all debris and trash during each operational period. ~ Don't feed or harass the animals.
ALL	Fatigue & Over Exertion	<ul style="list-style-type: none"> ~ Drink 1 quart of water/sports drink each hour during and after work. ~ Rotate crews out of smoky areas. ~ Set a reasonable work pace and allow adequate rest breaks while on the project. ~ Use buddy system to monitor personnel of heat related and fatigue issues. ~ Follow work / rest guidelines. Mitigate before next shift.
ALL	ATV/UTV use	<ul style="list-style-type: none"> ~ Ensure equipment is inspected and safe to use ~ Restrict UTV's to max width of 50" on ATV trails due to width and severe outsloped conditions. ~ Ensure operator is trained and certified to operate. ~ Ensure operator has proper PPE according to the Red Book. ~ At a minimum a hardhat with chin strap secured should be worn at all times. If your agency requires more advanced helmets and protection, follow your agency policy.
ALL	Fog	<ul style="list-style-type: none"> ~ Obey posted speed limits at all times. Visibility may be limited to 1/2 mile in areas. ~ If driving in a convoy, maintain a safe distance between vehicles for emergency stops and distance. ~ Don't use high beam lights while driving, it can impair the vision of the driver and oncoming traffic.
ALL	Bees, Ticks, Mosquitoes, Spiders, Chiggers	<ul style="list-style-type: none"> ~ Canvas crew members for those with known allergic reactions to stings. ~ Ensure crew members have medication pens if needed. ~ Perform daily self inspection. ~ Use repellent as necessary. ~ Advanced Life Support, multi-dose epi and airway protection ~ Keep affected area clean and bandaged. ~ Be extra careful wen eating and/or drinking to avoid stings to mouth and throat.

MEDICAL PLAN (ICS 206 WF)

1. Incident/Project Name		2. Operational Period						
West Mims Fire		Date/Time 5/24/17-5/25/17 0730 – 0200						
3. Ambulance Services								
Name	Complete Address	Phone & EMS Frequency		Advanced Life Support (ALS) Yes No				
Clinch County EMS	1050 Valdosta Hwy Homerville Ga	911		YES				
Charlton County EMS	321 Georgia Ave. St. George GA	911		YES				
4. Air Ambulance Services								
Name	Phone	Type of Aircraft & Capability						
Air Methods	888-763-1010	AS 350 with night vision capabilities						
Air Evac	888-269-6006	206 L1 + with night vision capabilities						
Trauma	800-223-4878	Bell 407 & EC153 both with night vision capabilities						
5. Hospitals								
Name Complete Address	GPS Datum – WGS 84 Coordinate Standard Degrees Decimal Minutes DD° MM.MMM' N - Lat DD° MM.MMM' W - Long		Travel Time Air Gnd		Phone	Helipad Yes No		Level of Care Facility
	Lat:	Long:						
Memorial Satilla Health 1900 Teveau St. Waycross GA 31501	Lat:	N 31' 13.452	15 mins	45 mins	912-283-3030	<input checked="" type="checkbox"/>	<input type="checkbox"/>	Level III
	Long:	W 82' 20.875						
	VHF:							
Clinch Memorial 1050 Valdosta Hwy Homerville Ga 31634	Lat:	N 31' 01.975	20 mins	30 mins	912-487-5211	<input checked="" type="checkbox"/>	<input type="checkbox"/>	Level IV
	Long:	W 82' 45.850						
	VHF:							
Ed Frazier Hospital N. 3 rd Street MacClenny Fl 32036	Lat:	N 30' 28.482	15 mins	45 mins	904-259-3151	<input checked="" type="checkbox"/>	<input type="checkbox"/>	Level IV
	Long:	W 82' 11.896						
	VHF:							
Shands Jacksonville 655 West 8 th Street Jacksonville Fl 32209	Lat:	N 30' 20.890	45 mins	90 mins	904-224-0411	<input checked="" type="checkbox"/>	<input type="checkbox"/>	Level I Trauma Center
	Long:	W 81' 39.862						
	VHF:							
UF Shands Burn Center 1600 SW Archer Rd. Gainesville Fl 32610	Lat:	N 29' 38.648	45 mins	105 mins	352-265-8932	<input checked="" type="checkbox"/>	<input type="checkbox"/>	Burn Center
	Long:	W 82' 21.189						
	VHF:							
IWI IC Responsibilities: -Take charge of the scene – inform the Division Supervisor and Communications that you are the IWI IC and establish radio communications -Assign or begin patient assessment (9 Line) and first aid. -Determine patient transportation through consultation with line medical personnel and Medical Unit Leader. -Order transportation resources through Communications as early as possible. -Notify Communications as resources arrive and any patient status changes. -Names of injured or deceased individuals will not be transmitted on the radio. -Initiate documentation for future investigation; if a line safety officer is available, assign them to lead documentation. -Conduct an After Action Review to determine successes, areas to improve and lessons learned.								

MEDICAL PLAN (ICS 206 WF)

6. Division Branch Group	
DAY MEDIC	
Division A- Paul Pugh	602-376-9812
Division B -Penny McDonagh	470-366-6301
Division C/D -Gary Allen Ford	470-532-8807
Division J/K/L -Lionel Van Gurp	928-235-7059
Division M/N/O -Dean Carpenter w/UTV	229-561-4224
Division Y/Z -John Heck	602-571-2505
SWING MEDIC	
Division A/Y - Stephen Wolfstich	520-508-9807
Division C – Colin Stackhouse	602-885-3115
Division O/Z - Alyse Guitierrez	602-999-8011
Division O Kyle Port	602-410-6788
Medical Station WEST	
MEDL office - Rod Schmidt	470-366-6317
Medical Station EAST	
MEDL Station - Mike Fincham	530-925-1267
Branch I	
Clinch County EMS Ambulance (DAY/SWING)	470-532-8806
Branch III	
Golden Isle Ambulance (DAY/SWING)	912-602-9224
Branch IV	
Okefenokee EMS Ambulance (DAY)	470-532-8797

7. Prepared By (Medical Unit Leader)	8. Date/Time	9. Reviewed By (Safety Officer)	10. Date/Time
Steve Russo MEDL Travis McGowen MEDL (T)	5/23/17		5/23/2017

Fire Information needs your photos to tell the story of the West Mims Fire.

Your photos tell the story best!

If you have an iPhone, there will be an information officer in attendance at each briefing that can collect your photos via AirDrop.

It takes second and will help us IMMENSELY!



AirDrop

If you do not have an iPhone, please send us your photos via email to:

OkeFirePIO@gmail.com

05/24/2017

TENTATIVE RELEASE

WEST MIMS US-GA-OKR-017006

OVERHEAD

O-510	0000	(HEQB)	DITMANSON, KEVIN
O-476	0800	(ITSS)	NICOLSON, CORY JON
O-451	1700	(EDSD)	ROBISON, CAITLIN M
O-412	1800	(STEN)	FARRELL, JAMES
O-417	1800	(TFLD)	HUGHES, ERIC R
O-461	1800	(SOF2)	KLOCK, LARRY
O-473	1800	(RESL)	PATE, TIFFANY
O-388	1800	(EMPF)	PORT, KYLE
O-453	1800	(PTRC)	RANDOLPH, SARA

05/25/2017

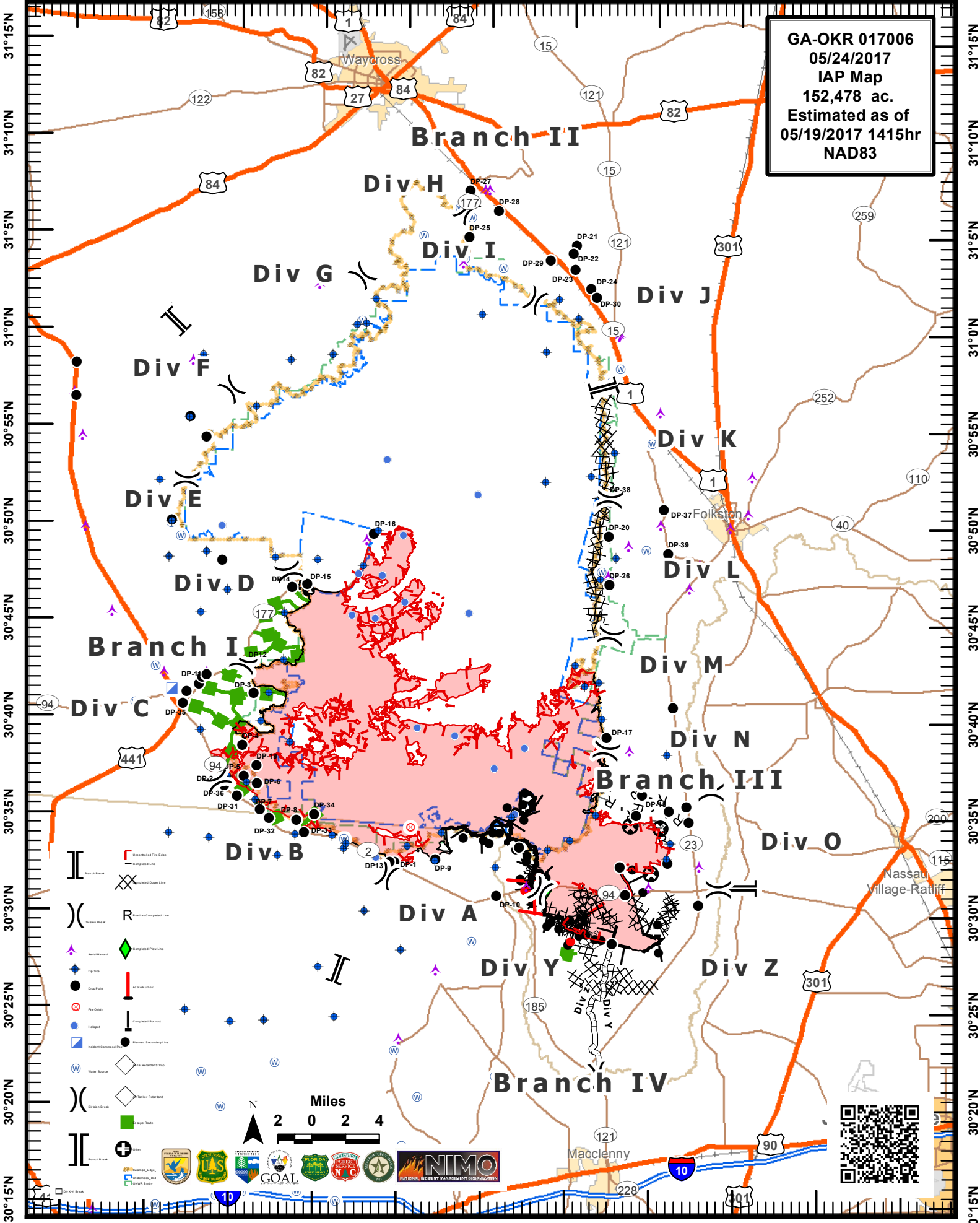
TENTATIVE RELEASE

WEST MIMS US-GA-OKR-017006

OVERHEAD

O-520	0800	(OPBD)	LAENG, ROBERT
O-317	1700	(FBAN)	FILBERT, MATT
O-434	1700	(DOCL)	FLEMING, JANIS
O-515	1700	(DIVS)	MCFARLAND, SAMMY E
O-532	1800	(STAM)	DUMMER, ADAM
O-399	1800	(IMET)	GOUDSWARD, JOSEPH
O-517	1800	(DIVS)	TOLL, GREG R

GA-OKR 017006
05/24/2017
IAP Map
152,478 ac.
Estimated as of
05/19/2017 1415hr
NAD83



31°15'N
31°10'N
31°05'N
31°00'N
30°55'N
30°50'N
30°45'N
30°40'N
30°35'N
30°30'N
30°25'N
30°20'N
30°15'N

31°15'N
31°10'N
31°05'N
31°00'N
30°55'N
30°50'N
30°45'N
30°40'N
30°35'N
30°30'N
30°25'N
30°20'N
30°15'N

This Page Intentionally left blank.

MEDICAL PLAN (ICS 206 WF)

Medical Incident Report

FOR ALL MEDICAL EMERGENCIES: IDENTIFY ON SCENE INCIDENT COMMANDER BY NAME AND POSITION AND ANNOUNCE "MEDICAL EMERGENCY" TO INITIATE RESPONSE FROM IMT COMMUNICATIONS/DISPATCH.

Use items one through nine to communicate situation to communications/dispatch.

1. CONTACT COMMUNICATIONS/DISPATCH

Ex: "Communications, Div. Alpha. Stand-by for Priority Medical Incident Report." (If life threatening request designated frequency be cleared for emergency traffic.)

2. INCIDENT STATUS: Provide incident summary and command structure.

Nature of Injury/Illness		<i>Describe the injury (Ex: Broken leg with bleeding)</i>
Incident Name		<i>Geographic Name + "Medical" (Ex: Trout Meadow Medical)</i>
Incident Commander		<i>Name of IC</i>
Patient Care		<i>Name of Care Provider (Ex: EMT Smith)</i>

3. INITIAL PATIENT ASSESSMENT: Complete this section for each patient. This is only a brief, initial assessment. Provide additional patient info after completing this 9 Line Report.

Number of Patients:	Male / Female	Age:	Weight:
Conscious? <input type="checkbox"/> YES <input type="checkbox"/> NO = MEDEVAC!			
Breathing? <input type="checkbox"/> YES <input type="checkbox"/> NO = MEDEVAC!			
Mechanism of Injury: <i>What caused the injury?</i>			
Lat/Long (Datum WGS84) <i>Ex: N 40° 42.45' x W 123° 03.24'</i>			

4. SEVERITY OF EMERGENCY, TRANSPORT PRIORITY

SEVERITY	TRANSPORT PRIORITY
<input type="checkbox"/> URGENT-RED Life threatening injury or illness. <i>Ex: Unconscious, difficulty breathing, bleeding severely, 2° – 3° burns more than 4 palm sizes, heat stroke, disoriented.</i>	Ambulance or MEDEVAC helicopter. Evacuation need is IMMEDIATE.
<input type="checkbox"/> PRIORITY-YELLOW Serious injury or illness. <i>Ex: Significant trauma, not able to walk, 2° – 3° burns not more than 1-2 palm sizes.</i>	Ambulance or consider air transport if at remote location. Evacuation may be DELAYED.
<input type="checkbox"/> ROUTINE-GREEN Not a life threatening injury or illness. <i>Ex: Sprains, strains, minor heat-related illness.</i>	Non-Emergency. Evacuation considered Routine of Convenience.

5. TRANSPORT PLAN:

Air Transport: (Agency Aircraft Preferred)

<input type="checkbox"/> Helispot	<input type="checkbox"/> Short-haul/Hoist	<input type="checkbox"/> Life Flight	<input type="checkbox"/> Other
Ground Transport:			
<input type="checkbox"/> Self-Extract	<input type="checkbox"/> Carry-Out	<input type="checkbox"/> Ambulance	<input type="checkbox"/> Other

6. ADDITIONAL RESOURCE/EQUIPMENT NEEDS:

<input type="checkbox"/> Paramedic/EMT(s)	<input type="checkbox"/> Crew(s)	<input type="checkbox"/> SKED/Backboard/C-Collar
<input type="checkbox"/> Burn Sheet(s)	<input type="checkbox"/> Oxygen	<input type="checkbox"/> Trauma Bag
<input type="checkbox"/> Medication(s)	<input type="checkbox"/> IV/Fluid(s)	<input type="checkbox"/> Cardiac Monitor/AED
<input type="checkbox"/> Other (i.e. splints, rope rescue, wheeled litter)		

7. COMMUNICATIONS:

Function	Channel Name/Number	Receive (Rx)	Tone/NAC *	Transmit (Tx)	Tone/NAC *
<i>Ex: Command</i>	<i>Forest Rpt, Ch. 2</i>	<i>168.3250</i>	<i>110.9</i>	<i>171.4325</i>	<i>110.9</i>
COMMAND					
AIR-TO-GRND					
TACTICAL					

*(NAC for digital radio system)

8. EVACUATION LOCATION:

Lat/Long (Datum WGS84) <i>EX: N 40 42.45' x W 123 03.24'</i>	
Patient's ETA to Evacuation Location:	
Helispot/Extraction Size and Hazards:	

9. CONTINGENCY:

Considerations: <i>If primary options fail, what actions can be implemented in conjunction with primary evacuation method? Be thinking ahead...</i>	REMEMBER: Confirm ETA's of resources ordered Act according to your level of training Be Alert. Keep Calm. Think Clearly. Act Decisively.
--	--