

INCIDENT ACTION PLAN

WEST MIMS FIRE

OPERATIONAL PERIOD

MAY 26, 2017

0730-1930

SOUTHERN STATES TYPE-1 IMT

QR for IAP



GA-OKR-017006

FWS FFF2000000KYJ70

USFS PRKYJ717_1502 (P)

NPS PFFSKJ7017.00.1

QR for Maps



Schedule

0730 Pre-Op Briefing
0800 Morning Briefing
1100 C & G
1600 Pre Planning Meeting
1700 Planning Meeting



INCIDENT OBJECTIVES (ICS 202)

1. Incident Name:	2. Operational Period: DAY SHIFT 0730-1930	
WEST MIMS	Date/Time From: 05/26/2017 0730 FRI	Date/Time To: 05/26/2017 1930 FRI
3. Objective(s):		
<ul style="list-style-type: none"> • Provide for the safety and security of incident personnel and public in all incident operations through sound risk assessment and hazard mitigations. • Maintain a positive working relationship with all adjacent landowners, cooperators State and Federal partners. Inform, involve and communicate incident planning and operations with all partners. • Confine all fires that are within the Okefenokee National Wildlife Refuge, inside the Refuge and/or inside the swamp edge break if possible. Aggressively suppress all fire outside the swamp edge boundary. • In cooperation with local timberland owners, use full suppression strategies and tactics to minimize damage to private timberlands and improvements and to prevent fires outside the Refuge from entering the Refuge. • Assist in management and suppression of additional fires (new starts or breakouts) in the vicinity as approved by Agency Administrators and Unified Incident Commanders. • Protect all cultural and archeological sites and structures within the refuge. • Manage the fires cost-effectively consistent with the values at risk. • Implement structure protection as necessary for at-risk facilities and communities. • Coordinate suppression actions with assigned Refuge Resource Advisors. • Conduct all operations in a harassment-free environment. There will be a no tolerance atmosphere for harassment, alcohol, or illegal drug use. Everyone will be treated with dignity and respect. • Identify and initiate suppression repair on all Divisions. 		
4. Operational Period Command Emphasis:		
Branch IV Keep fire East of the North Prong of St Mary's River; West of Nassau county Florida; and North of Baker county Florida Branch III Keep fire North of Rayonier Road 10, West of St Mary's River, and South of Stokes Road Keep fire within the Okefenokee Refuge Swamp Edge Break Boundary. Respond to initial attack fires on new starts within: *South of Suwannee Canal *Within the Okefenokee jurisdictional boundaries *Within state properties inside Perimeter Road		
General Situational Awareness:		
Utilize confine, contain, and point source protection strategies and tactics that commit operations personnel only where and when they can be successful, under conditions where important values at risk are protected with the least exposure.		
5. Site Safety Plan Required? Yes <input type="checkbox"/> No <input checked="" type="checkbox"/>		
Approved Site Safety Plan(s) Located at:		
6. Incident Action Plan (the items checked below are included in this Incident Action Plan):		
<input checked="" type="checkbox"/> ICS 202 <input checked="" type="checkbox"/> ICS 203 <input checked="" type="checkbox"/> ICS 204 <input checked="" type="checkbox"/> ICS 205 <input type="checkbox"/> ICS 205A <input checked="" type="checkbox"/> ICS 206	<input type="checkbox"/> ICS 207 <input checked="" type="checkbox"/> ICS 208 <input checked="" type="checkbox"/> ICS 220 <input checked="" type="checkbox"/> Map/Chart <input checked="" type="checkbox"/> Weather Forecast/Tides/Currents	Other Attachments: <input checked="" type="checkbox"/> <u>PIO MESSAGE</u> <input checked="" type="checkbox"/> <u>TENTATIVE DEMOB</u> <input checked="" type="checkbox"/> <u>SAFETY MESSAGE</u> <input checked="" type="checkbox"/> <u>RESTAURANT LIST</u>
7. Prepared by: DUANE DURGEE	Position/Title: PSC2	Signature:
8. Approved by Incident Commander:		Signature:
ICS 202	IAP Page	Date/Time:

ORGANIZATION ASSIGNMENT LIST (ICS 203)

1. Incident Name:		2. Operational Period: DAY SHIFT 0730-1930	
WEST MIMS		Date/Time From: 05/26/2017 0730	FRI
		Date/Time To: 05/26/2017 1930	FRI
3. Incident Commander(s) and Command Staff:			
IC/UC	SAM LENEAVE, KEITH MOUSEL (T), MIKE QUESINBERRY	GIS SPECIALIST	DOMINIC MARCANIO, BRENDAN MULHOLLAND (T) CLINT ROBERTS, KEVIN WINTER
SAFETY OFFICER	LARRY CONNELL, LARRY GRUBBS, GENE MADDEN CLAY STEPHENS (T)	INCIDENT METEOROLOGIST	SCOTT KENNEDY
INFORMATION OFFICER	ANNALEASA WINTER TODD SCHROEDER; JUDITH DOWNING	FIRE BEHAVIOR ANALYST; AIR RESOURCE ADVISOR	BRAD SMITH, MIKE WARD (T) , ANDREW TAYLOR (T) SEAN LUCHS, THSP-ARA,
LIAISON OFFICER	ALAN DOZIER DANIEL STANLEY	6. Logistics Section:	
4. Agency/Organization Representative(s):		CHIEF	EAST - JIM PETERS; SALLY BROWNING WEST - DAVID MCVAY (T)
Agency/Organization	Name	SUPPLY UNIT	WEST-LAUREN SMITH EAST-TRAVIS SHIDAL
GFC PROTECTION	FRANK SORRELLS	FACILITIES UNIT	WEST-DENNIS EVANS EAST-CURTIS ASAY
OKE REF MGR/ASSIST	MICHAEL LUSK; SARA CLARDY	GROUND SUPPORT UNIT	WEST-GLENN SIMMONS EAST-DOUGLAS CROCKER
OKE REF FMO	REESE KERBOW	COMMUNICATIONS UNIT	CHUCK RADCLIFF PAUL NOA (T)
GOAL	JIM BARRETT	MEDICAL UNIT	WEST-STEPHEN RUSSO, TRAVIS MCGOWEN EAST-BRAD BURNS, MATTHEW LARICOS (T)
FL FFS	JOHN RAULERSON	COMT	WEST-KELLY TOWE; ROGER MENARD EAST-STEVEN LANDON
GEMA	DIANE ADAMS	FOOD UNIT	WEST-STEPHEN MARSHALL EAST-BRANTLEY SMITH (T)
NORFOLK SOUTHERN	CHAD EDWARDS	SECURITY UNIT	GREG BLANKS
CLINCH CO EMA	WILL JOYCE; RANDY PATTEN	ORDM	MARK MCCLELLAN, MICHAEL STIGLER (T) TAMARA KLINDT
CHARLTON CO EMA	BRUCE YOUNG	RCDM	LAUREN SMITH, JAKE CLEVENER
WARE CO EMA	BILLY PARHAM	EQPM	KIRBY HENNINSSSEN; JASON MCHAN
NCFS	GREG SMITH	RADO	
NASSAU COUNTY EMS	BILLY E STEP	BCMG (DAY)	WEST-BOB EMRICK EAST-JAWANA STEPHENS (T)
BAKER CO SO	BECK PARKER	JOHN BETHEA STAGING AREA - BCMG (NIGHT)	BEN REICK
5. Planning Section:		JOHN BETHEA STAGING AREA - EQMG	JOHN STRONG
CHIEF	DUANE DURGEE; DARREL SCHWILLING JOE BISHOP (T)	JOHN BETHEA STAGING AREA CAMP CREW BOSS	JUWANNA SAMPSON
PSC2	JASON BRAUNSTEIN (T)		
RESOURCES UNIT	SHAUN STEWART TOM WINSHIP; JEFF TURNER (T)		
STATUS CHECKIN	CARLA ROBERTS; JESSICA VALDEZ		
SITUATION UNIT	SCOTT CROSBY STUART COOMBS		
DEMOBILIZATION UNIT	BOBBY CAHAL DAVID BROWN		
DOCUMENTATION UNIT	JAN FLEMING		
ITSS	DEAN GROE RANDALL FOUNTAIN		
TRAINING SPECIALIST	BRAD STEWART DAVID HUNT		
9. Prepared By:		Position/Title: RESL	Signature:
ICS 203	Name: SHAUN STEWART	Date/Time: 05/25/2017 1203	
	IAP Page		

ORGANIZATION ASSIGNMENT LIST (ICS 203)

1. Incident Name:		2. Operational Period: DAY SHIFT 0730-1930	
WEST MIMS		Date/Time From: 05/26/2017 0730	Date/Time To: 05/26/2017 1930
		FRI	FRI
		DIVISION/GROUP	Z JASON LONGFELLOW
7b. Air Operations Branch:			
		AIR OPS BRANCH DIRECTOR	JOHN BRAGG
7. Operations Section:		AIR SUPPORT GROUP SUPERVISOR	AL DRIESBACH
OPS SECTION CHIEF	RICK DOLAN; KYLE SMITH EAST-FRED BOEHM, WEST-BUCK KLINE		AIR TACTICAL GROUP SUPERVISOR
PLANNING OPS	TRENT INGRAM PHIL DANIELS (T)		HEB1 POGO
STRUCTURE PROTECTION	RANDY JONES		
Branch I		8. Finance/Administration Section:	
BRANCH DIRECTOR	RON GARCIA LANCE DELGADO		CHIEF
DIVISION/GROUP	B	RON CALHOUN; RON RUCKER KEITH FIELDS (T)	DEPUTY
DIVISION/GROUP	C	CHRIS ROBERTS PAUL AMUNDSON (T)	PROCUREMENT UNIT
DIVISION/GROUP	D	WALTER BOWERS HEATHER GRIFFIN (T)	CONTRACTING OFFICER
DIVISION/GROUP	F	JASON FORTHOFFER	EQUIPMENT TIME RECORDER
DIVISION/GROUP	ROAD MAINTENANCE	CANDICE KUTROSKY CHAD STOVER (T)	COST UNIT
Branch III		TIME UNIT	
BRANCH DIRECTOR	MARC CRAIN; CHRIS LUNDGREN (T)		PERSONNEL TIME RECORDER
DIVISION/GROUP	IA	GREGG BUCKALEW ARTURO GASDIK (T)	MARTHA MILLER, LINDA STARLING BECKY HOPKINS, TRISH KITSMILLER, SARA RANDOLPH (T)
DIVISION/GROUP	M	DAVID SMITH JASON LAGO (T)	COMPENSATION UNIT
DIVISION/GROUP	N	KAREN SCHOLL CHRIS RANKIN (T)	BRETT STEFFEN
DIVISION/GROUP	O	SHAWN ALEXANDER MICHAEL GUE (T)	
DIVISION/GROUP	STAGING	ADAM DUMMER CHRIS RUDD	
Branch IV			
BRANCH DIRECTOR	STEVE MILLER		
DIVISION/GROUP	A	TOM TALBOT JEFF BOSTWICK (T)	
DIVISION/GROUP	Y	RANDY GREGORY SEAN BASSO (T)	
9. Prepared By:	Name: SHAUN STEWART	Position/Title: RESL	Signature:
ICS 203	IAP Page	Date/Time: 05/25/2017 1203	



To: All Incident Personnel, West Mims Fire 2017

As the Unified Command Incident Commanders, we have a policy of “zero tolerance” of inappropriate behavior during incident operations. Any form of harassment, discriminatory practices, or disrespectful behavior will not be tolerated. Known or reported acts will be dealt with appropriately.

We are particularly concerned about the perception that alcohol has a place in any of the Incident facilities. It is not appropriate to indulge in alcoholic beverages during any fire assignment.

The National Team from the Southern Region has a policy of “NO ALCOHOL” from the time of dispatch until the time of physical release from the Incident. Members of the Team voluntarily comply with this policy; all incident personnel will be expected to do so also.

We endorse, support, and expect an attitude of mutual respect for all Incident personnel and the public we serve. We also, endorse the attitude and work ethic that places “Safety First, every time on every Incident.” We expect nothing less.

<p>/s/ Keith Mousel /s/ Mike Quesinberry Incident Commanders</p>



Fire Weather Forecast



FORECAST NO: 49
PREDICTION FOR: Friday
SHIFT DATE: May 26, 2017
FORECAST ISSUED: 1800 May 25, 2017

NAME OF FIRE: West Mims Fire
UNIT: Okefenokee National Wildlife Refuge
Incident Meteorologist: Scott Kennedy 252-269-9497

DISCUSSION:

High pressure will build into the area today continuing to bring a warming and drying trend. Temperatures will climb to around 90 with very dry RH values around 25 percent. West winds will be lighter today, mainly less than 10 mph.

FRIDAY:

- WEATHER: Sunny.
 - WIND (20 FT): W 4 to 8.
 - MAX TEMPERATURES: 89-92
 - LAL: 1
 - MIXING HEIGHT: 5000
- CHANCE RAIN: 0%
 RAINFALL: 0"
- MIN RH: 25-30%
 DISPERSION (MAX): 50
 TRANSPORT WINDS: W 10 mph

FRIDAY NIGHT:

- WEATHER: Clear.
 - WIND (20 FT): SW 1 to 3 mph.
 - MIN TEMPERATURES: 60 to 65
 - LAL: 1
- MAX RH: 90-100%
 CHANCE OF RAIN: 0%
 MAX LVORI: 9
 RAINFALL: 0"

HOURLY WEATHER FORECAST (LST) Friday 1000 through Saturday 0800

Time	1000	1200	1400	1600	1800	2000	2200	2400	0200	0400	0600	0800
Temp °F	75	86	90	91	87	80	72	69	66	63	61	65
RH %	52	35	27	28	34	48	65	77	82	86	100	97
Wind Dir	W	W	W	W	W	SW	SW	SW	SW	SW	SW	SW
Wind Spd mph	3	5	6	7	5	3	2	2	2	1	1	1
Wind Gst mph	-	-	-	-	-	-	-	-	-	-	-	-
Rain Chance%	0	0	0	0	0	0	0	0	0	0	0	0
Weather	-	-	-	-	-	-	-	-	-	-	-	-

SATURDAY:

- WEATHER: Mostly sunny.
 - WIND (20 FT): West around 4 to 7 mph.
 - MAX TEMPERATURES: 92 to 96.
 - LAL: 1
 - MIXING HEIGHT: 5500
- CHANCE RAIN: 0%
 RAINFALL: 0"
- MIN RH: 30-35%
 DISPERSION (MAX): 60
 TRANSPORT WINDS: W 15 mph

Sunrise Friday: 6:30 am

Sunset Friday: 8:25 pm

Sunrise Saturday: 6:30 am

RAWS Observations:

Jones Island



Eddy Tower



OKE East



OKE NW



FIRE BEHAVIOR FORECAST

FORECAST NUMBER: #39	TYPE OF FIRE: Wildland
FIRE NAME: West Mims	OPERATIONAL PERIOD: 05/26/2017 Day Operational Period
DATE ISSUED: 05/25/2017	TIME ISSUED: 1800
UNIT: Okefenokee National Wildlife Refuge	WRITTEN: Andrew Taylor FBAN(t) Signed: Brad Smith FBAN

FUEL ASSUMPTIONS: The major fuel types found in the West Mims Fire are fuel model SH3 (Brush), fuel model 7 (Southern Rough) and fuel model 8 (Timber litter). High risk fuels (those that will support active crown fire) include pine plantations with a palmetto/gallberry brush understory (FM7). Live canopy fuel moistures in pine and brush are below average and will support active crown fire when critical fire weather and above average fuel dryness is present. Current fuel dryness, as represented by KBDI and ERC G, have dropped with KBDI still above normal and ERC G near normal. Fuel dryness will increase with the current drying trend.

Calculated 1 hour fine dead fuel moisture: 4% 10 hour fuel moisture: 6% 100 hour fuel moisture: 16%

WEATHER SUMMARY: The cold front that passed through over the fire on Tuesday and Wednesday has left the area giving way to clear and sunny skies bringing in warming and drying conditions.

WIND (20 FT): W 4-8 mph.
 MAX TEMPERATURES: 89-92 MIN RH: 25-30%
 LAL: 1 CHANCE OF RAIN: 0 MAX DISPERSION: 50
 MIXING HEIGHT: 5000 TRANSPORT WINDS: W 10 mph

General observed fire behavior prior to rain: Drought conditions exist across the fire area. Fire will easily transition from surface into the canopy when ladder fuels are present; Expect long range spotting from active crown fire. A fires resistance to control increases when one or more of the fire behavior thresholds are exceeded and fuel dryness is above average. Increased fire intensity, higher rate of spread and higher crown fire potential are possible when these thresholds are exceeded.

Critical fire behavior thresholds when fuels are dry:
 Temp >90°, RH < 40%, Dispersion index greater than 60

Specific: All Branches: Surface fuels will continue to dry out and become available to burn. Piles and muck soils will continue to hold heat and burn. Needle cast in previously burnt areas will re-burn where ignitions occur. New starts are possible from lightning hold overs from the recent lightning activity as fuels dry out and temperature increases and RH decreases. Both temperature and RH will exceed critical fire behavior thresholds.

Fuel Type	Rates of Spread	Flame Length	Max Spot Distance	Probability of Ignition	Torching / Crowning Potential / Flame Lengths
20' winds @ 6					
Southern Rough(pine w/palmetto/gallberry)	8-12 ch/hr.	3-5 feet	0 feet	80%	Torching not predicted
Timber Litter (pine litter reburn)	1 ch/hr.	1 feet	0 feet	80%	Torching not predicted
Brush (Swamp)	2 ch/hr.	2 feet	0 feet	80%	Torching not predicted

AIR OPERATIONS: There will be very light winds making for favorable conditions for air operations.

FIRE BEHAVIOR SAFETY: Standard Fire Order #3 Base all actions on current and expected behavior of the fire.

Reference: 1 chain = 66 feet, 20 chains = .25 mile, 40 chains = .50 mile, 60 chains = .75 mile, 80 chains = 1 Mile

IA Protocol

- Determine LAT/LONG.
- Notify OSC and/or OPBD.
- OSC/OPBD will notify Unified IC's for approval to assist with ground or aviation resources.

In Georgia:

Southern Response Dispatch (229) 386-3846

If no contact-Buck Kline (912) 678-2694

In Florida-

Lake City (Baker, Columbia, and Hamilton Counties):
(386) 243-6243

Jacksonville (Nassau County): (904) 266-8351

If no contact-Rick Dolan (352) 353-5101

Osceola National Forest- Any starts south of Florida State Highway 2 under USFS jurisdiction are the responsibly of the Osceola NF. Contact Tallahassee Dispatch at 850-523-8600 or Forest Duty Officer Drew Page at 850-523-8600. Tractor plow units should not engage (unless life or property is threatened) before contact with Osceola NF (Chris Lydick at 850-264-3209 or Scott Hussey at 352-215-5722).

For OKR-

Brantley Boatright Dispatch (912) 496-7366 x 230
or (912) 276-0023

Division/Group Assignment List (ICS 204 WF)

1. Incident Name:			3.			
WEST MIMS			Branch:		Division/Group:	
2. Operational Period: DAY SHIFT 0730-1930			I		B	
Date/Time From: 05/26/2017 0730 FRI		Date/Time To: 05/26/2017 1930 FRI				
4. Operations Personnel						
PLANNING OPERATIONS CHIEF		TRENT INGRAM PHIL DANIELS (T)		OPERATIONS CHIEF		RICK DOLAN BUCK KLINE
BRANCH DIRECTOR		RON GARCIA LANCE DELGADO		DIVISION/GROUP SUPERVISOR		RON CALHOUN, RON RUCKER KEITH FIELDS (T)
SAFETY		LARRY GRUBBS CLAY STEPHENS (T)		AIR TACTICAL GROUP SUPERVISOR		MARK NUNEZ KEN MCLAUGHLIN
5. Resources Assigned this Period						
Strike Team / Task Force / Resource Designator		LWD	Leader	Number Persons	Drop Off PT./Time	Pick Up PT./Time
STEN O-605		05/29	COURTNEY WENZEL	1	ICP/0730	ICP/1930
ENG6 NM-SNF - JEMEZ RD - 631 E-763		05/29	KARL KEEMAN	6	ICP/0730	ICP/1930
ENG6 AR-OZF - PH - E-641 E-76		05/29	MICHAEL W KOCH	3	ICP/0730	ICP/1930
ENG6 UT-FIF - ENG 612 E-843		06/02	JARAD TEEPLES	8	ICP/0730	ICP/1930
WTS1 WILDLANDS FIRE SERVICE E-132		06/02	DAVID SWEENEY	1	ICP/0730	ICP/1930
TFLD O-656		05/31	KEN COOPER	1	ICP/0730	ICP/1930
TFLD(T) O-672		05/30	JAMIE TYSON	1	ICP/0730	ICP/1930
HEQB O-572		05/27	BERT SMITH	1	ICP/0730	ICP/1930
TPL4 UNIT #8191 - HUNTSVILLE E-570		05/25	CROCKETT PEGODA	2	ICP/0730	ICP/1930
TPL4 TX-TXS E-471		05/25	TIMOTHY GILL	2	ICP/0730	ICP/1930
TPL4 UNIT #6192 - NEW BOSTON E-467		05/25	LEE ANDERSEN	2	ICP/0730	ICP/1930
TPL4 UNIT #7292 - JACKSONVILLE E-571		05/26	JACOB CROWLEY	2	ICP/0730	ICP/1930
8. Division/Group Communication Summary						
Function	Channel	RX Frequency N/W	RX Tone/NAC	TX Frequency N/W	TX Tone/NAC	Mode
AIR TO GROUND	4	169.2000N	NONE	169.2000N	NONE	A
COMMAND	8	159.2700N	156.7	151.1000N	123.0	A
TACTICAL	13	159.4125N	NONE	159.4125N	NONE	A
AIR TO GROUND	14	166.6750N	NONE	166.6750N	NONE	A
AIR TO GROUND	15	169.1500N	NONE	169.1500N	NONE	A
AIR GUARD	16	168.6250N	NONE	168.6250N	110.9	A
9. Prepared By (Resource Unit Leader)			Approved By (Planning Section Chief)		Date	Time
SHAUN STEWART			DUANE DURGEE		05/25/2017	1203

Division/Group Assignment List (ICS 204 WF)

1. Incident Name:			3.			
WEST MIMS			Branch:		Division/Group:	
2. Operational Period: DAY SHIFT 0730-1930			I		B	
Date/Time From: 05/26/2017 0730 FRI		Date/Time To: 05/26/2017 1930 FRI				
4. Operations Personnel						
PLANNING OPERATIONS CHIEF		TRENT INGRAM PHIL DANIELS (T)		OPERATIONS CHIEF		RICK DOLAN BUCK KLINE
BRANCH DIRECTOR		RON GARCIA LANCE DELGADO		DIVISION/GROUP SUPERVISOR		RON CALHOUN, RON RUCKER KEITH FIELDS (T)
SAFETY		LARRY GRUBBS CLAY STEPHENS (T)		AIR TACTICAL GROUP SUPERVISOR		MARK NUNEZ KEN MCLAUGHLIN
5. Resources Assigned this Period						
Strike Team / Task Force / Resource Designator		LWD	Leader	Number Persons	Drop Off PT./Time	Pick Up PT./Time
STEQ O-565		05/31	ALBERT POTTS	1	ICP/0730	ICP/1930
TPL4 GFC 3285 E-824		05/31	TERRY K HEARD	1	ICP/0730	ICP/1930
TPL4 GFC 3212 E-825		05/31	BRUCE E FREE	1	ICP/0730	ICP/1930
TPL4 GFC 2230 E-826		05/31	CHRISTOPHER SCOTT BRANNEN		ICP/0730	ICP/1930
EMPF O-543 470-366-6301		05/27	PENNY MCDONAGH	1	ICP/0730	ICP/1930
SOF2 O-252		05/31	CHRIS CHURCH	1	ICP/0730	ICP/1930
6. Control Operations/Work Assignments:						
Task						
<ul style="list-style-type: none"> • Patrol and mop up fuels appropriate to fuel type and anticipated weather and fire behavior. • Respond to any new starts within the division. 						
Purpose						
<ul style="list-style-type: none"> • Keep fire north of GA 94/FL 2. 						
End State						
<ul style="list-style-type: none"> • Fire is contained by adequate control line to reduce threat to escape; minimizing damage to private timberlands, private lands, and other resource values at risk. 						
8. Division/Group Communication Summary						
Function	Channel	RX Frequency N/W	RX Tone/NAC	TX Frequency N/W	TX Tone/NAC	Mode
AIR TO GROUND	4	169.2000N	NONE	169.2000N	NONE	A
COMMAND	8	159.2700N	156.7	151.1000N	123.0	A
TACTICAL	13	159.4125N	NONE	159.4125N	NONE	A
AIR TO GROUND	14	166.6750N	NONE	166.6750N	NONE	A
AIR TO GROUND	15	169.1500N	NONE	169.1500N	NONE	A
AIR GUARD	16	168.6250N	NONE	168.6250N	110.9	A
9. Prepared By (Resource Unit Leader)			Approved By (Planning Section Chief)		Date	Time
SHAUN STEWART			DUANE DURGEE		05/25/2017	1203

Division/Group Assignment List (ICS 204 WF)

1. Incident Name:			3.			
WEST MIMS			Branch:		Division/Group:	
2. Operational Period: DAY SHIFT 0730-1930			I		B	
Date/Time From: 05/26/2017 0730 FRI		Date/Time To: 05/26/2017 1930 FRI				
4. Operations Personnel						
PLANNING OPERATIONS CHIEF		TRENT INGRAM PHIL DANIELS (T)		OPERATIONS CHIEF		RICK DOLAN BUCK KLINE
BRANCH DIRECTOR		RON GARCIA LANCE DELGADO		DIVISION/GROUP SUPERVISOR		RON CALHOUN, RON RUCKER KEITH FIELDS (T)
SAFETY		LARRY GRUBBS CLAY STEPHENS (T)		AIR TACTICAL GROUP SUPERVISOR		MARK NUNEZ KEN MCLAUGHLIN
7. Special Instructions:						
Ensure LCES is in place before operations begin and stay hydrated. Drive defensively and with lights on at all times. Identify escape routes.						
Use caution when working around logging operations.						
For IA protocol see page 7						
Medical Emergency Channel: Command						
ETA for Ambulance to Scene:						
Air: 20 – 30 mins						
Ground: 10 - 15 mins Paved roads only.						
IWI – IC or approved person will use Channel 16 (Air Guard) for contact with air ambulance						
Air Ambulance landing zone to be determined by IWI – IC						
Utilize engines to provide dust abatement, as needed, prior to air ambulance landing						
8. Division/Group Communication Summary						
Function	Channel	RX Frequency N/W	RX Tone/NAC	TX Frequency N/W	TX Tone/NAC	Mode
AIR TO GROUND	4	169.2000N	NONE	169.2000N	NONE	A
COMMAND	8	159.2700N	156.7	151.1000N	123.0	A
TACTICAL	13	159.4125N	NONE	159.4125N	NONE	A
AIR TO GROUND	14	166.6750N	NONE	166.6750N	NONE	A
AIR TO GROUND	15	169.1500N	NONE	169.1500N	NONE	A
AIR GUARD	16	168.6250N	NONE	168.6250N	110.9	A
9. Prepared By (Resource Unit Leader)			Approved By (Planning Section Chief)			Date
SHAUN STEWART			DUANE DURGEE			05/25/2017
						Time
						1203

Division/Group Assignment List (ICS 204 WF)

1. Incident Name:			3.			
WEST MIMS			Branch:		Division/Group:	
2. Operational Period: DAY SHIFT 0730-1930			I		C	
Date/Time From: 05/26/2017 0730 FRI		Date/Time To: 05/26/2017 1930 FRI				
4. Operations Personnel						
PLANNING OPERATIONS CHIEF		TRENT INGRAM PHIL DANIELS (T)		OPERATIONS CHIEF		RICK DOLAN BUCK KLINE
BRANCH DIRECTOR		RON GARCIA LANCE DELGADO		DIVISION/GROUP SUPERVISOR		CHRIS ROBERTS
SAFETY		LARRY GRUBBS CLAY STEPHENS (T)		AIR TACTICAL GROUP SUPERVISOR		MARK NUNEZ KEN MCLAUGHLIN
5. Resources Assigned this Period						
Strike Team / Task Force / Resource Designator		LWD	Leader	Number Persons	Drop Off PT./Time	Pick Up PT./Time
HC2IA PATRICK ENVIRONMENTAL C-11		05/29	AUSTIN HERGERT	19	ICP/0730	ICP/1930
TFLD O-597		05/29	CHAD KIDD	1	ICP/0730	ICP/1930
TFLD (T) O-701		05/30	TRAVIS CARSON	1	ICP/0730	ICP/1930
ENG4 NC-NCS - PP-1434 - D3 E-542		06/06	MATT GARNER	2	ICP/0730	ICP/1930
ENG6 WV-MOF 641 E-870		06/02	JARED D STAGGS	3	ICP/0730	ICP/1930
ENG6 AL-ALF SHOAL CREEK 651 E-78		06/06	SCOTT LAYFIELD	3	ICP/0730	ICP/1930
ENG6 - KY-KYS - 111 E-659		05/26	STEPHEN HAMMOND	2	ICP/0730	ICP/1930
ENG6 - KY-KYS - 110 E-658		05/26	DENNIS W WOOLARD	2	ICP/0730	ICP/1930
WTS2 STRICKLANDS TRACTOR & AUTO E-265		05/28	LUCIUS CORBITT	1	ICP/0730	ICP/1930
WTS2 TIPTON & YOUNG E-135		06/07	KEN SWAIN	1	ICP/0730	ICP/1930
STEQ O-564		05/26	RANDALL MOSLEY	1	ICP/0730	ICP/1930
TPL2 GFC 3230 E-688		05/27	DAVID MASON	1	ICP/0730	ICP/1930
TPL3 GFC 1536 E-689		05/27	WALTER BIRD	1	ICP/0730	ICP/1930
TPL3 GFC 3186 E-687		05/26	WILLIAM K BRADY	1	ICP/0730	ICP/1930
8. Division/Group Communication Summary						
Function	Channel	RX Frequency N/W	RX Tone/NAC	TX Frequency N/W	TX Tone/NAC	Mode
AIR TO GROUND	4	169.2000N	NONE	169.2000N	NONE	A
COMMAND	8	159.2700N	156.7	151.1000N	123.0	A
TACTICAL	9	159.2850N	NONE	159.2850N	156.7	A
AIR TO GROUND	14	166.6750N	NONE	166.6750N	NONE	A
AIR TO GROUND	15	169.1500N	NONE	169.1500N	NONE	A
AIR GUARD	16	168.6250N	NONE	168.6250N	110.9	A
9. Prepared By (Resource Unit Leader)			Approved By (Planning Section Chief)		Date	Time
SHAUN STEWART			DUANE DURGEE		05/25/2017	1203

Division/Group Assignment List (ICS 204 WF)

1. Incident Name:			3.			
WEST MIMS			Branch:		Division/Group:	
2. Operational Period: DAY SHIFT 0730-1930			I		C	
Date/Time From: 05/26/2017 0730 FRI		Date/Time To: 05/26/2017 1930 FRI				
4. Operations Personnel						
PLANNING OPERATIONS CHIEF		TRENT INGRAM PHIL DANIELS (T)		OPERATIONS CHIEF		RICK DOLAN BUCK KLINE
BRANCH DIRECTOR		RON GARCIA LANCE DELGADO		DIVISION/GROUP SUPERVISOR		CHRIS ROBERTS
SAFETY		LARRY GRUBBS CLAY STEPHENS (T)		AIR TACTICAL GROUP SUPERVISOR		MARK NUNEZ KEN MCLAUGHLIN
5. Resources Assigned this Period						
Strike Team / Task Force / Resource Designator		LWD	Leader	Number Persons	Drop Off PT./Time	Pick Up PT./Time
TFLD O-717		06/01	MYRON WILLIAMS	1	ICP/0730	ICP/1930
TPL4 GFC 3254 E-876		06/01	MICHAEL YOKE JR	1	ICP/0730	ICP/1930
TPL4 GFC 3331 E-877		06/01	DAVID TOMPKINS	1	ICP/0730	ICP/1930
TPL5 GFC 3219 E-878		06/01	PHILLIP B DAVIS	1	ICP/0730	ICP/1930
EMPF E-352.2		06/13	COLIN STENHOUSE	1	ICP/0730	ICP/1930
SOF2 O-252		05/31	CHRIS CHURCH	1	ICP/0730	ICP/1930
6. Control Operations/Work Assignments:						
Task						
<ul style="list-style-type: none"> • Patrol and mop up fuels appropriate to fuel type and anticipated weather and fire behavior. • Respond to any new starts within the division. • Create or improve fireline around logging debris in coordination with logging operators. 						
Purpose						
8. Division/Group Communication Summary						
Function	Channel	RX Frequency N/W	RX Tone/NAC	TX Frequency N/W	TX Tone/NAC	Mode
AIR TO GROUND	4	169.2000N	NONE	169.2000N	NONE	A
COMMAND	8	159.2700N	156.7	151.1000N	123.0	A
TACTICAL	9	159.2850N	NONE	159.2850N	156.7	A
AIR TO GROUND	14	166.6750N	NONE	166.6750N	NONE	A
AIR TO GROUND	15	169.1500N	NONE	169.1500N	NONE	A
AIR GUARD	16	168.6250N	NONE	168.6250N	110.9	A
9. Prepared By (Resource Unit Leader)			Approved By (Planning Section Chief)		Date	Time
SHAUN STEWART			DUANE DURGEE		05/25/2017	1203

Division/Group Assignment List (ICS 204 WF)

1. Incident Name:			3.			
WEST MIMS			Branch:		Division/Group:	
2. Operational Period:			I			
DAY SHIFT 0730-1930			C			
Date/Time From: 05/26/2017 0730 FRI		Date/Time To: 05/26/2017 1930 FRI				
4. Operations Personnel						
PLANNING OPERATIONS CHIEF		TRENT INGRAM PHIL DANIELS (T)		OPERATIONS CHIEF		RICK DOLAN BUCK KLINE
BRANCH DIRECTOR		RON GARCIA LANCE DELGADO		DIVISION/GROUP SUPERVISOR		CHRIS ROBERTS
SAFETY		LARRY GRUBBS CLAY STEPHENS (T)		AIR TACTICAL GROUP SUPERVISOR		MARK NUNEZ KEN MCLAUGHLIN
6. Control Operations/Work Assignments:						
<ul style="list-style-type: none"> Keep fire east of swamp edge fire break. <p>End State</p> <ul style="list-style-type: none"> Fire is contained by adequate control line to reduce threat to escape; minimizing damage to private timberlands, private lands, and other resource values at risk. 						
7. Special Instructions:						
<p>Ensure LCES is in place before operations begin and stay hydrated. Drive defensively and with lights on at all times. Identify escape routes. Logging operations are continuing. Stay clear of cutting areas. Please be mindful of logging operations that will be ongoing. Ensure that all personnel stay clear of felling operations. Pay attention for potential reburn in logging area. Work with Gilyard Logging foreman on any suppression actions within the logging area.</p> <p>Use caution when working around logging operations.</p> <p><u>For IA protocol see page 7</u></p> <p>Additional Resources: Superior Pine Tractor Plow D6; SP-83, SP-85, SP-87 Medical Emergency Channel: Command ETA for Ambulance to Scene: Air: 20 – 30 mins Ground: 10 - 15 mins Paved roads only. IWI – IC or approved person will use Channel 16 (Air Guard) for contact with air ambulance Air Ambulance landing zone to be determined by IWI – IC Utilize engines to provide dust abatement, as needed, prior to air ambulance landing</p>						
8. Division/Group Communication Summary						
Function	Channel	RX Frequency N/W	RX Tone/NAC	TX Frequency N/W	TX Tone/NAC	Mode
AIR TO GROUND	4	169.2000N	NONE	169.2000N	NONE	A
COMMAND	8	159.2700N	156.7	151.1000N	123.0	A
TACTICAL	9	159.2850N	NONE	159.2850N	156.7	A
AIR TO GROUND	14	166.6750N	NONE	166.6750N	NONE	A
AIR TO GROUND	15	169.1500N	NONE	169.1500N	NONE	A
AIR GUARD	16	168.6250N	NONE	168.6250N	110.9	A
9. Prepared By (Resource Unit Leader)			Approved By (Planning Section Chief)		Date	Time
SHAUN STEWART			DUANE DURGEE		05/25/2017	1203

Division/Group Assignment List (ICS 204 WF)

1. Incident Name:			3.			
WEST MIMS			Branch:		Division/Group:	
2. Operational Period: DAY SHIFT 0730-1930			I		D	
Date/Time From: 05/26/2017 0730 FRI		Date/Time To: 05/26/2017 1930 FRI				
4. Operations Personnel						
PLANNING OPERATIONS CHIEF		TRENT INGRAM PHIL DANIELS (T)		OPERATIONS CHIEF		RICK DOLAN BUCK KLINE
BRANCH DIRECTOR		RON GARCIA LANCE DELGADO		DIVISION/GROUP SUPERVISOR		WALTER BOWERS HEATHER GRIFFIN (T)
SAFETY		LARRY GRUBBS CLAY STEPHENS (T)		AIR TACTICAL GROUP SUPERVISOR		MARK NUNEZ, KEN MCLAUGHLIN
5. Resources Assigned this Period						
Strike Team / Task Force / Resource Designator		LWD	Leader	Number Persons	Drop Off PT./Time	Pick Up PT./Time
TFLD O-596		05/28	ALFRED ALLMAN	1	ICP/0730	ICP/1930
TFLD(T) E-613.3		05/26	CHRIS BROOKS	1	ICP/0730	ICP/1930
HEQB O-662		05/31	WILLIAM BOJORQUES	1	ICP/0730	ICP/1930
DO22 OK-OKS ECU #2178 E-503		05/24	WILLIAM OWENS	1	ICP/0730	ICP/1930
DO23 WELBORN AQUA HAUL AND FIRE SERVICES E-514		05/26	JERRY WELBORN	2	ICP/0730	ICP/1930
ENG6 AR-OUF-PCS #691 E-838		05/30	LARRY SHORES	3	ICP/0730	ICP/1930
ENG6 FL-FNF-641 E-157		05/27	JUSTIN KNOWLES	3	ICP/0730	ICP/1930
ENG6 WY-RSD 1602 E-849		05/31	RICHARD HOWE	3	ICP/0730	ICP/1930
TFLD O-649		05/29	RANDY OKON	1	ICP/0730	ICP/1930
TFLD(T) O-730		06/07	JOEY SILVA	1	ICP/0730	ICP/1930
ENG6 AZ-COF-4-87 E-613		05/26	JAMES HOONANIE	6	ICP/0730	ICP/1930
ENG6 AZ-COF-4-86 E-610		05/26	MURRAY ROSENGARTEN	6	ICP/0730	ICP/1930
ENG6 ME-MES 6198 E-871		06/02	DANIEL PERKINS	3	ICP/0730	ICP/1930
ENG6 COLQUITT 86 STEPHEN FOSTER E-118		06/05	CHAD PRITCHETT	1	ICP/0730	ICP/1930
TFLD O-593		05/29	BRYAN ROSENOW	1	ICP/0730	ICP/1930
8. Division/Group Communication Summary						
Function	Channel	RX Frequency N/W	RX Tone/NAC	TX Frequency N/W	TX Tone/NAC	Mode
COMMAND	2	159.1200N	NONE	151.3700N	100.0	A
AIR TO GROUND	4	169.2000N	NONE	169.2000N	NONE	A
TACTICAL	13	159.4125N	NONE	159.4125N	NONE	A
AIR TO GROUND	14	166.6750N	NONE	166.6750N	NONE	A
AIR TO GROUND	15	169.1500N	NONE	169.1500N	NONE	A
AIR GUARD	16	168.6250N	NONE	168.6250N	110.9	A
9. Prepared By (Resource Unit Leader)			Approved By (Planning Section Chief)		Date	Time
SHAUN STEWART			DUANE DURGEE		05/25/2017	1203

Division/Group Assignment List (ICS 204 WF)

1. Incident Name:			3.			
WEST MIMS			Branch:		Division/Group:	
2. Operational Period: DAY SHIFT 0730-1930			I		D	
Date/Time From: 05/26/2017 0730 FRI		Date/Time To: 05/26/2017 1930 FRI				
4. Operations Personnel						
PLANNING OPERATIONS CHIEF		TRENT INGRAM PHIL DANIELS (T)		OPERATIONS CHIEF		RICK DOLAN BUCK KLINE
BRANCH DIRECTOR		RON GARCIA LANCE DELGADO		DIVISION/GROUP SUPERVISOR		WALTER BOWERS HEATHER GRIFFIN (T)
SAFETY		LARRY GRUBBS CLAY STEPHENS (T)		AIR TACTICAL GROUP SUPERVISOR		MARK NUNEZ, KEN MCLAUGHLIN
5. Resources Assigned this Period						
Strike Team / Task Force / Resource Designator		LWD	Leader	Number Persons	Drop Off PT./Time	Pick Up PT./Time
DOZ3 KY-KYS 311 - 650J E-510			UNSTAFFED	2	ICP/0730	ICP/1930
DOZ3 KY-KYS 312 - 650J E-511			UNSTAFFED	2	ICP/0730	ICP/1930
DOZ1 TX-TXS HUDSON 7699 E-788		05/30	CHAD WILEY	2	ICP/0730	ICP/1930
EMPF E-342.2		06/01	ROD SCHMIDT	1	ICP/0730	ICP/1930
SOF2 O-252		05/31	CHRIS CHURCH	1	ICP/0730	ICP/1930
6. Control Operations/Work Assignments:						
Task						
<ul style="list-style-type: none"> Patrol and mop up fuels appropriate to fuel type and anticipated weather and fire behavior. Respond to any new starts within the division. Monitor fire activity and location in the vicinity of Billies Island. 						
Purpose						
<ul style="list-style-type: none"> Keep fire south of the Suwannee Canal. 						
End State						
<ul style="list-style-type: none"> Fire activity north and west of Billy's Island has been detected and appropriate action has been initiated. Fire is contained by adequate control line to reduce threat to escape; minimizing damage to private timberlands, private lands, and other resource values at risk. 						
8. Division/Group Communication Summary						
Function	Channel	RX Frequency N/W	RX Tone/NAC	TX Frequency N/W	TX Tone/NAC	Mode
COMMAND	2	159.1200N	NONE	151.3700N	100.0	A
AIR TO GROUND	4	169.2000N	NONE	169.2000N	NONE	A
TACTICAL	13	159.4125N	NONE	159.4125N	NONE	A
AIR TO GROUND	14	166.6750N	NONE	166.6750N	NONE	A
AIR TO GROUND	15	169.1500N	NONE	169.1500N	NONE	A
AIR GUARD	16	168.6250N	NONE	168.6250N	110.9	A
9. Prepared By (Resource Unit Leader)			Approved By (Planning Section Chief)		Date	Time
SHAUN STEWART			DUANE DURGEE		05/25/2017	1203

Division/Group Assignment List (ICS 204 WF)

1. Incident Name:			3.			
WEST MIMS			I	D		
2. Operational Period: DAY SHIFT 0730-1930						
Date/Time From: 05/26/2017 0730 FRI		Date/Time To: 05/26/2017 1930 FRI				
4. Operations Personnel						
PLANNING OPERATIONS CHIEF	TRENT INGRAM PHIL DANIELS (T)			OPERATIONS CHIEF	RICK DOLAN BUCK KLINE	
BRANCH DIRECTOR	RON GARCIA LANCE DELGADO			DIVISION/GROUP SUPERVISOR	WALTER BOWERS HEATHER GRIFFIN (T)	
SAFETY	LARRY GRUBBS CLAY STEPHENS (T)			AIR TACTICAL GROUP SUPERVISOR	MARK NUNEZ, KEN MCLAUGHLIN	
7. Special Instructions:						
<p>Ensure LCES is in place before operations begin and stay hydrated. Drive defensively and with lights on at all times. Identify escape routes.</p> <p>For IA protocol see page 7</p> <p>Medical Emergency Channel: Command ETA for Ambulance to Scene: Air: 20 – 30 mins Ground: 10 - 15 mins Paved roads only. IWI – IC or approved person will use Channel 16 (Air Guard) for contact with air ambulance Air Ambulance landing zone to be determined by IWI – IC Utilize engines to provide dust abatement, as needed, prior to air ambulance landing</p>						
8. Division/Group Communication Summary						
Function	Channel	RX Frequency N/W	RX Tone/NAC	TX Frequency N/W	TX Tone/NAC	Mode
COMMAND	2	159.1200N	NONE	151.3700N	100.0	A
AIR TO GROUND	4	169.2000N	NONE	169.2000N	NONE	A
TACTICAL	13	159.4125N	NONE	159.4125N	NONE	A
AIR TO GROUND	14	166.6750N	NONE	166.6750N	NONE	A
AIR TO GROUND	15	169.1500N	NONE	169.1500N	NONE	A
AIR GUARD	16	168.6250N	NONE	168.6250N	110.9	A
9. Prepared By (Resource Unit Leader)			Approved By (Planning Section Chief)		Date	Time
SHAUN STEWART			DUANE DURGEE		05/25/2017	1203

Division/Group Assignment List (ICS 204 WF)

1. Incident Name:			3.			
WEST MIMS			Branch:		Division/Group:	
2. Operational Period: DAY SHIFT 0730-1930			I		F	
Date/Time From: 05/26/2017 0730 FRI		Date/Time To: 05/26/2017 1930 FRI				
4. Operations Personnel						
PLANNING OPERATIONS CHIEF		TRENT INGRAM		OPERATIONS CHIEF		RICK DOLAN FRED BOEHM
BRANCH DIRECTOR		RON GARCIA LANCE DELGADO		DIVISION/GROUP SUPERVISOR		JASON FORTHOFFER JEFF COBURN (T)
SAFETY		LARRY GRUBBS		AIR TACTICAL GROUP SUPERVISOR		MARK NUNEZ KEN MCLAUGHLIN
5. Resources Assigned this Period						
Strike Team / Task Force / Resource Designator		LWD	Leader	Number Persons	Drop Off PT./Time	Pick Up PT./Time
ENG6 BRUSH 143 E-769		05/29	RICARDO RENTERIA	6	ICP/0730	ICP/1930
ENG6 CO-PBS - 603 E-771		05/29	KEVIN EVANS	4	ICP/0730	ICP/1930
ENG6 VA-VAF - 641 - LEE E-655		05/26	JANET HERRING	3	ICP/0730	ICP/1930
HEQB O-642		05/29	HUNTER BELL	1	ICP/0730	ICP/1930
MAST WESTCO E-865		06/05		1	ICP/0730	ICP/1930
MAST MULCHER/MASTICATOR VIN# B0062 E-834		06/05		1	ICP/0730	ICP/1930
MAST ROT RANCH E-74		05/28	MIKE PARRISH	1	ICP/0730	ICP/1930
BHOE ROT RANCH JD 6415 (MOWER) E-73		05/28	DARRELL CLARK	1	ICP/0730	ICP/1930
EMPF O-560		05/26	LIONEL VAN GRUP	1	ICP/0730	ICP/1930
SOF2 O-587		05/29	RON BERTSCH	1	ICP/0730	ICP/1930
8. Division/Group Communication Summary						
Function	Channel	RX Frequency N/W	RX Tone/NAC	TX Frequency N/W	TX Tone/NAC	Mode
COMMAND	7	159.2700N	156.7	151.100N	100.0	A
AIR TO GROUND	4	169.2000N	NONE	169.2000N	NONE	A
TACTICAL	13	159.4125N	NONE	159.4125N	NONE	A
AIR TO GROUND	14	166.6750N	NONE	166.6750N	NONE	A
AIR TO GROUND	15	169.1500N	NONE	169.1500N	NONE	A
AIR GUARD	16	168.6250N	NONE	168.6250N	110.9	A
9. Prepared By (Resource Unit Leader)			Approved By (Planning Section Chief)		Date	Time
SHAUN STEWART			DUANE DURGEE		05/25/2017	1203

Division/Group Assignment List (ICS 204 WF)

1. Incident Name:			3.			
WEST MIMS			Branch:		Division/Group:	
2. Operational Period: DAY SHIFT 0730-1930			I		F	
Date/Time From: 05/26/2017 0730 FRI		Date/Time To: 05/26/2017 1930 FRI				
4. Operations Personnel						
PLANNING OPERATIONS CHIEF		TRENT INGRAM		OPERATIONS CHIEF		
				RICK DOLAN FRED BOEHM		
BRANCH DIRECTOR		RON GARCIA LANCE DELGADO		DIVISION/GROUP SUPERVISOR		
				JASON FORTHOFFER JEFF COBURN (T)		
SAFETY		LARRY GRUBBS		AIR TACTICAL GROUP SUPERVISOR		
				MARK NUNEZ KEN MCLAUGHLIN		
6. Control Operations/Work Assignments:						
Task						
<ul style="list-style-type: none"> • Assist private landowners and coordinate preparation of timberlands adjacent to the division. • Respond to any new starts within the division. • Monitor fire activity and location within the swamp. • Refresh Swamp Edge Break. 						
Purpose						
<ul style="list-style-type: none"> • Keep fire west of Swamp Edge Break. 						
End State						
<ul style="list-style-type: none"> • Fire activity that threatens Swamp Edge Break has been detected and appropriate action has been initiated. • Fire is contained by adequate control line to reduce threat to escape; minimizing damage to private timberlands, private lands, and other resource values at risk. 						
7. Special Instructions:						
Use caution when working around logging operations.						
For IA protocol see page 8						
Medical Emergency Channel: Command						
ETA for Ambulance to Scene:						
Air: 20 – 30 mins						
Ground: 10 - 15 mins Paved roads only.						
IWI – IC or approved person will use Channel 16 (Air Guard) for contact with air ambulance						
Air Ambulance landing zone to be determined by IWI – IC						
Utilize engines to provide dust abatement, as needed, prior to air ambulance landing						
8. Division/Group Communication Summary						
Function	Channel	RX Frequency N/W	RX Tone/NAC	TX Frequency N/W	TX Tone/NAC	Mode
COMMAND	7	159.2700N	156.7	151.100N	100.0	A
AIR TO GROUND	4	169.2000N	NONE	169.2000N	NONE	A
TACTICAL	13	159.4125N	NONE	159.4125N	NONE	A
AIR TO GROUND	14	166.6750N	NONE	166.6750N	NONE	A
AIR TO GROUND	15	169.1500N	NONE	169.1500N	NONE	A
AIR GUARD	16	168.6250N	NONE	168.6250N	110.9	A
9. Prepared By (Resource Unit Leader)			Approved By (Planning Section Chief)		Date	Time
SHAUN STEWART			DUANE DURGEE		05/25/2017	1203

Division/Group Assignment List (ICS 204 WF)

1. Incident Name:			3.			
WEST MIMS			I		Division/Group: ROAD MAINTENANCE	
2. Operational Period: DAY SHIFT 0730-1930						
Date/Time From: 05/26/2017 0730 FRI		Date/Time To: 05/26/2017 1930 FRI				
4. Operations Personnel						
PLANNING OPERATIONS CHIEF		TRENT INGRAM PHIL DANIELS (T)		OPERATIONS CHIEF		
BRANCH DIRECTOR		RON GARCIA LANCE DELGADO		DIVISION/GROUP SUPERVISOR		
SAFETY		LARRY GRUBBS CLAY STEPHENS (T)		AIR TACTICAL GROUP SUPERVISOR		
				RICK DOLAN BUCK KLINE		
				CANDICE KUTROSKY CHAD STOVER (T)		
				MARK NUNEZ KEN MCLAUGHLIN		
5. Resources Assigned this Period						
Strike Team / Task Force / Resource Designator		LWD	Leader	Number Persons	Drop Off PT./Time	Pick Up PT./Time
CLAY GROUP					ICP/0730	ICP/1930
EXCA - VIN# 500242 E-626		05/30	ALEX CORNEILIUS	1	ICP/0730	ICP/1930
TDMP - VIN# 54083 E-624		05/28	ALEX CORNEIL	2	ICP/0730	ICP/1930
TDMP - VIN# 64094 E-625		05/30	WILLIAM DICKERSON	2	ICP/0730	ICP/1930
TDMP - CORNELIUS FARMS # 17006 E-879		05/31	EDGAR DIXON	1	ICP/0730	ICP/1930
TDMP - CORNELIUS FARMS #633987 E-880		05/31	SAMMY HENDRIX	1	ICP/0730	ICP/1930
TDMP - CORNELIUS FARMS E-937		06/04	DAVID GARNER	1	ICP/0730	ICP/1930
TDMP - CORNELIUS FARMS E-938		06/04	JOE JOHNSON	1	ICP/0730	ICP/1930
TDMP - CORNELIUS FARMS E-939		06/04	RONALD NUTTY	1	ICP/0730	ICP/1930
TDMP - CORNELIUS FARMS E-940		06/04	EDDIE JOHNSON	1	ICP/0730	ICP/1930
HEQB O-646		05/29	CHAD TUSS	1	ICP/0730	ICP/1930
HEQB O-665		05/30	BOB LITTLE	1	ICP/0730	ICP/1930
TFLD O-618		05/29	KRIS CRODDY	1	ICP/0730	ICP/1930
TFLD O-650		05/30	JAMES SPARROW	1	ICP/0730	ICP/1930
8. Division/Group Communication Summary						
Function	Channel	RX Frequency N/W	RX Tone/NAC	TX Frequency N/W	TX Tone/NAC	Mode
COMMAND	2	159.1200N	NONE	151.3700N	100.0	A
AIR TO GROUND	4	169.2000N	NONE	169.2000N	NONE	A
TACTICAL	6	159.3900N	NONE	159.3900N	156.7	A
AIR TO GROUND	14	166.6750N	NONE	166.6750N	NONE	A
AIR TO GROUND	15	169.1500N	NONE	169.1500N	NONE	A
AIR GUARD	16	168.6250N	NONE	168.6250N	110.9	A
9. Prepared By (Resource Unit Leader)			Approved By (Planning Section Chief)		Date	Time
SHAUN STEWART			DUANE DURGEE		05/25/2017	1203

Division/Group Assignment List (ICS 204 WF)

1. Incident Name:				3.			
WEST MIMS				I		Division/Group: ROAD MAINTENANCE	
2. Operational Period: DAY SHIFT 0730-1930							
Date/Time From: 05/26/2017 0730 FRI		Date/Time To: 05/26/2017 1930 FRI					
4. Operations Personnel							
PLANNING OPERATIONS CHIEF		TRENT INGRAM PHIL DANIELS (T)		OPERATIONS CHIEF		RICK DOLAN BUCK KLINE	
BRANCH DIRECTOR		RON GARCIA LANCE DELGADO		DIVISION/GROUP SUPERVISOR		CANDICE KUTROSKY CHAD STOVER (T)	
SAFETY		LARRY GRUBBS CLAY STEPHENS (T)		AIR TACTICAL GROUP SUPERVISOR		MARK NUNEZ KEN MCLAUGHLIN	
5. Resources Assigned this Period							
Strike Team / Task Force / Resource Designator		LWD	Leader	Number Persons	Drop Off PT./Time	Pick Up PT./Time	
EAST SIDE					ICP/0730	ICP/1930	
TFLD O-640		05/31	CASEY A O'CONNOR	1	ICP/0730	ICP/1930	
TFLD O-652		05/30	LONNY HAGEDON	1	ICP/0730	ICP/1930	
WTS2 - TIPTON & YOUNG E-313		05/25	WOODY BARGERON	1	ICP/0730	ICP/1930	
WTS1 - WT - 357 - PB 350505 HASSELL E-746		05/31	DANNIE YUMAS	1	ICP/0730	ICP/1930	
WTS2 - HOME STYLE WATER TENDIN' E-644		05/29	JOHNNY CASTILLO	1	ICP/0730	ICP/1930	
HEQB O-547		05/27	RODNEY G HELZER	1	ICP/0730	ICP/1930	
GRD2 - R.O.T. RANCH CONSTRUCTION E-234		06/05	ROBBY WORRELL	1	ICP/0730	ICP/1930	
GRD2 - R.O.T. RANCH CONSTRUCTION E-639		05/26	TRAVIS WORRELL	1	ICP/0730	ICP/1930	
8. Division/Group Communication Summary							
Function	Channel	RX Frequency N/W	RX Tone/NAC	TX Frequency N/W	TX Tone/NAC	Mode	
COMMAND	2	159.1200N	NONE	151.3700N	100.0	A	
AIR TO GROUND	4	169.2000N	NONE	169.2000N	NONE	A	
TACTICAL	6	159.3900N	NONE	159.3900N	156.7	A	
AIR TO GROUND	14	166.6750N	NONE	166.6750N	NONE	A	
AIR TO GROUND	15	169.1500N	NONE	169.1500N	NONE	A	
AIR GUARD	16	168.6250N	NONE	168.6250N	110.9	A	
9. Prepared By (Resource Unit Leader)			Approved By (Planning Section Chief)			Date	Time
SHAUN STEWART			DUANE DURGEE			05/25/2017	1203

Division/Group Assignment List (ICS 204 WF)

1. Incident Name:			3.			
WEST MIMS			I		Division/Group: ROAD MAINTENANCE	
2. Operational Period: DAY SHIFT 0730-1930						
Date/Time From: 05/26/2017 0730 FRI		Date/Time To: 05/26/2017 1930 FRI				
4. Operations Personnel						
PLANNING OPERATIONS CHIEF		TRENT INGRAM PHIL DANIELS (T)		OPERATIONS CHIEF		RICK DOLAN BUCK KLINE
BRANCH DIRECTOR		RON GARCIA LANCE DELGADO		DIVISION/GROUP SUPERVISOR		CANDICE KUTROSKY CHAD STOVER (T)
SAFETY		LARRY GRUBBS CLAY STEPHENS (T)		AIR TACTICAL GROUP SUPERVISOR		MARK NUNEZ KEN MCLAUGHLIN
5. Resources Assigned this Period						
Strike Team / Task Force / Resource Designator		LWD	Leader	Number Persons	Drop Off PT./Time	Pick Up PT./Time
SOUTH SIDE					ICP/0730	ICP/1930
TFLD O-632		05/29	ANDREW V BRANSON	1	ICP/0730	ICP/1930
HEQB O-599		05/31	MARK J BASS	1	ICP/0730	ICP/1930
GRD2 WILDLANDS FIRE SERVICES 6198TE E-136		06/04	JUSTIN BARBER	1	ICP/0730	ICP/1930
WTS2 AZ-DSY #146 E-643		05/30	RANDY KENNEDY	1	ICP/0730	ICP/1930
HEQB O-600		05/28	SHANE FEIGHTNER	1	ICP/0730	ICP/1930
GRD CORNELIUS FARMS DT01 E-941		05/31			ICP/0730	ICP/1930
TFLD O-654		05/31	JOSH CANTRELL	1	ICP/0730	ICP/1930
TFLD (T) O-671		05/29	JAMES BARBERI	1	ICP/0730	ICP/1930
SOF2 O-586		05/27	PHILLIP YOUNG	1	ICP/0730	ICP/1930
8. Division/Group Communication Summary						
Function	Channel	RX Frequency N/W	RX Tone/NAC	TX Frequency N/W	TX Tone/NAC	Mode
COMMAND	2	159.1200N	NONE	151.3700N	100.0	A
AIR TO GROUND	4	169.2000N	NONE	169.2000N	NONE	A
TACTICAL	6	159.3900N	NONE	159.3900N	156.7	A
AIR TO GROUND	14	166.6750N	NONE	166.6750N	NONE	A
AIR TO GROUND	15	169.1500N	NONE	169.1500N	NONE	A
AIR GUARD	16	168.6250N	NONE	168.6250N	110.9	A
9. Prepared By (Resource Unit Leader)			Approved By (Planning Section Chief)		Date	Time
SHAUN STEWART			DUANE DURGEE		05/25/2017	1203

Division/Group Assignment List (ICS 204 WF)

1. Incident Name:			3.			
WEST MIMS			I		Division/Group: ROAD MAINTENANCE	
2. Operational Period: DAY SHIFT 0730-1930						
Date/Time From: 05/26/2017 0730 FRI		Date/Time To: 05/26/2017 1930 FRI				
4. Operations Personnel						
PLANNING OPERATIONS CHIEF		TRENT INGRAM PHIL DANIELS (T)		OPERATIONS CHIEF		RICK DOLAN BUCK KLINE
BRANCH DIRECTOR		RON GARCIA LANCE DELGADO		DIVISION/GROUP SUPERVISOR		CANDICE KUTROSKY CHAD STOVER (T)
SAFETY		LARRY GRUBBS CLAY STEPHENS (T)		AIR TACTICAL GROUP SUPERVISOR		MARK NUNEZ KEN MCLAUGHLIN
5. Resources Assigned this Period						
Strike Team / Task Force / Resource Designator		LWD	Leader	Number Persons	Drop Off PT./Time	Pick Up PT./Time
WEST GROUP					ICP/0730	ICP/1930
STEQ O-603		05/28	JAMES LICO	1	ICP/0730	ICP/1930
HEQB O-647		05/30	BRANDON CREECH	1	ICP/0730	ICP/1930
GRD2 - MOORE'S QUALITY EARTHMOVING E-641		05/29	ERIC MOORE	2	ICP/0730	ICP/1930
HEQB O-687		05/31	RUDY MEDRANO	1	ICP/0730	ICP/1930
GRD1 - VIN# 625863 E-866		06/01	BRIAN JENKINS	1	ICP/0730	ICP/1930
HEQB O-688		05/31	GENE PHILLIPS	1	ICP/0730	ICP/1930
DOZ2 - TIPTON & YOUNG CONSTRUCTION COMPANY INC - E-506		05/25	ETHAN TIPTON	2	ICP/0730	ICP/1930
HEQB O-631		06/03	SCOTT BURGHARDT	1	ICP/0730	ICP/1930
TPL2 - TIPTON & YOUNG CONSTRUCTION COMPAN E-509		05/23			ICP/0730	ICP/1930
8. Division/Group Communication Summary						
Function	Channel	RX Frequency N/W	RX Tone/NAC	TX Frequency N/W	TX Tone/NAC	Mode
COMMAND	2	159.1200N	NONE	151.3700N	100.0	A
AIR TO GROUND	4	169.2000N	NONE	169.2000N	NONE	A
TACTICAL	6	159.3900N	NONE	159.3900N	156.7	A
AIR TO GROUND	14	166.6750N	NONE	166.6750N	NONE	A
AIR TO GROUND	15	169.1500N	NONE	169.1500N	NONE	A
AIR GUARD	16	168.6250N	NONE	168.6250N	110.9	A
9. Prepared By (Resource Unit Leader)			Approved By (Planning Section Chief)		Date	Time
SHAUN STEWART			DUANE DURGEE		05/25/2017	1203

Division/Group Assignment List (ICS 204 WF)

1. Incident Name:			3.				
WEST MIMS			I	Branch:		Division/Group:	
2. Operational Period: DAY SHIFT 0730-1930				ROAD MAINTENANCE			
Date/Time From: 05/26/2017 0730 FRI	Date/Time To: 05/26/2017 1930 FRI						
4. Operations Personnel							
PLANNING OPERATIONS CHIEF		TRENT INGRAM PHIL DANIELS (T)		OPERATIONS CHIEF		RICK DOLAN BUCK KLINE	
BRANCH DIRECTOR		RON GARCIA LANCE DELGADO		DIVISION/GROUP SUPERVISOR		CANDICE KUTROSKY CHAD STOVER (T)	
SAFETY		LARRY GRUBBS CLAY STEPHENS (T)		AIR TACTICAL GROUP SUPERVISOR		MARK NUNEZ KEN MCLAUGHLIN	
5. Resources Assigned this Period							
Strike Team / Task Force / Resource Designator		LWD	Leader	Number Persons	Drop Off PT./Time	Pick Up PT./Time	
HEQB O-645		05/29	JONATHAN MCDUFFEY	1	ICP/0730	ICP/1930	
WT2 TIPTON & YOUNG CONST E-340		06/04	DEVIN MCHZLEY	1	ICP/0730	ICP/1930	
SOF2 O-492		05/25	TIMOTHY OLIVERIUS	1	ICP/0730	ICP/1930	
6. Control Operations/Work Assignments:							
Task <ul style="list-style-type: none"> Assess access roads to fire perimeter; repair or maintain as necessary in accordance with priority list provided by Operations Section Chief. Provide adequate signage for traffic safety. Assess single lane bridges and culverts for safety and maintenance needs. Purpose <ul style="list-style-type: none"> To keep adequate vehicular access to the fire perimeter. End State <ul style="list-style-type: none"> Access roads are in a safe and travel worthy condition. 							
7. Special Instructions:							
8. Division/Group Communication Summary							
Function	Channel	RX Frequency N/W	RX Tone/NAC	TX Frequency N/W	TX Tone/NAC	Mode	
COMMAND	2	159.1200N	NONE	151.3700N	100.0	A	
AIR TO GROUND	4	169.2000N	NONE	169.2000N	NONE	A	
TACTICAL	6	159.3900N	NONE	159.3900N	156.7	A	
AIR TO GROUND	14	166.6750N	NONE	166.6750N	NONE	A	
AIR TO GROUND	15	169.1500N	NONE	169.1500N	NONE	A	
AIR GUARD	16	168.6250N	NONE	168.6250N	110.9	A	
9. Prepared By (Resource Unit Leader)			Approved By (Planning Section Chief)		Date	Time	
SHAUN STEWART			DUANE DURGEE		05/25/2017	1203	

Division/Group Assignment List (ICS 204 WF)

1. Incident Name:			3.						
WEST MIMS			I	Branch:		Division/Group:			
2. Operational Period: DAY SHIFT 0730-1930				ROAD MAINTENANCE					
Date/Time From: 05/26/2017 0730 FRI		Date/Time To: 05/26/2017 1930 FRI							
4. Operations Personnel									
PLANNING OPERATIONS CHIEF		TRENT INGRAM PHIL DANIELS (T)		OPERATIONS CHIEF		RICK DOLAN BUCK KLINE			
BRANCH DIRECTOR		RON GARCIA LANCE DELGADO		DIVISION/GROUP SUPERVISOR		CANDICE KUTROSKY CHAD STOVER (T)			
SAFETY		LARRY GRUBBS CLAY STEPHENS (T)		AIR TACTICAL GROUP SUPERVISOR		MARK NUNEZ KEN MCLAUGHLIN			
7. Special Instructions:									
<p>Check in and out with Division Supervisor when moving between divisions.</p> <p>Medical Emergency Channel: Command ETA for Ambulance to Scene: Air: 20 – 30 mins Ground: 10 - 15 mins Paved roads only. IWI – IC or approved person will use Channel 16 (Air Guard) for contact with air ambulance Air Ambulance landing zone to be determined by IWI – IC Utilize engines to provide dust abatement, as needed, prior to air ambulance landing</p> <p>For IA protocol see page 7</p>									
8. Division/Group Communication Summary									
Function	Channel	RX Frequency N/W	RX Tone/NAC	TX Frequency N/W	TX Tone/NAC	Mode			
COMMAND	2	159.1200N	NONE	151.3700N	100.0	A			
AIR TO GROUND	4	169.2000N	NONE	169.2000N	NONE	A			
TACTICAL	6	159.3900N	NONE	159.3900N	156.7	A			
AIR TO GROUND	14	166.6750N	NONE	166.6750N	NONE	A			
AIR TO GROUND	15	169.1500N	NONE	169.1500N	NONE	A			
AIR GUARD	16	168.6250N	NONE	168.6250N	110.9	A			
9. Prepared By (Resource Unit Leader)			Approved By (Planning Section Chief)			Date		Time	
SHAUN STEWART			DUANE DURGEE			05/25/2017		1203	

Division/Group Assignment List (ICS 204 WF)

1. Incident Name:			3.			
WEST MIMS			III		INITIAL ATTACK	
2. Operational Period: DAY SHIFT 0730-1930						
Date/Time From: 05/26/2017 0730 FRI		Date/Time To: 05/26/2017 1930 FRI				
4. Operations Personnel						
PLANNING OPERATIONS CHIEF		TRENT INGRAM PHIL DANIELS (T)		OPERATIONS CHIEF		RICK DOLAN FRED BOEHM
BRANCH DIRECTOR		MARC CRAIN CHRIS LUNDGREN (T)		DIVISION/GROUP SUPERVISOR		GREGG BUCKALEW ARTURO GASDIK (T)
SAFETY		LARRY CONNELL		AIR TACTICAL GROUP SUPERVISOR		MARK NUNEZ KEN MCLAUGHLIN
5. Resources Assigned this Period						
Strike Team / Task Force / Resource Designator		LWD	Leader	Number Persons	Drop Off PT./Time	Pick Up PT./Time
TFLD O-205		05/16	ADAM MCCULLOUGH	1	EAST CAMP/0730	EAST CAMP/1930
TFLD(T) E-35.3		06/06	RANDALL MCLAIN	1	EAST CAMP/0730	EAST CAMP/1930
ENG6 NC-POR PLE1 E-2		06/03	AIMEE MIDGETT	2	EAST CAMP/0730	EAST CAMP/1930
ENG6 OK-4261 E-36		05/23	ANDY HEISEY	2	EAST CAMP/0730	EAST CAMP/1930
ENG6 SC-CRR-E262 E-237		05/22	ROBERT ASKINS	2	EAST CAMP/0730	EAST CAMP/1930
TPL2 SC-CRR D-223 E-240		05/27	UNSTAFFED	1	EAST CAMP/0730	EAST CAMP/1930
TPL2 NC-POR 750J PX3 E-131		05/24	ERIC MEEKINS	1	EAST CAMP/0730	EAST CAMP/1930
TPL2 OKE 56 - TPL E-35		05/26	GEORGE PELT	1	EAST CAMP/0730	EAST CAMP/1930
DOZ2 OKE-54 E-34		05/30	FED PRIVETT	1	EAST CAMP/0730	EAST CAMP/1930
DOZ2 GA-SAR-922 E-122		05/30	C. JOHNSON	1	EAST CAMP/0730	EAST CAMP/1930
ICT4		05/30	CORY BRYANT	1	EAST CAMP/0730	EAST CAMP/1930
SOF2 O-539		05/27	PAUL BOUCHER	1		
8. Division/Group Communication Summary						
Function	Channel	RX Frequency N/W	RX Tone/NAC	TX Frequency N/W	TX Tone/NAC	Mode
COMMAND	3	159.1200N	NONE	151.3700N	82.5	A
AIR TO GROUND	4	169.2000N	NONE	169.2000N	NONE	A
TACTICAL	1	154.2800N	NONE	154.2800N	NONE	A
AIR TO GROUND	14	166.6750N	NONE	166.6750N	NONE	A
AIR TO GROUND	15	169.1500N	NONE	169.1500N	NONE	A
AIR GUARD	16	168.6250N	NONE	168.6250N	110.9	A
9. Prepared By (Resource Unit Leader)			Approved By (Planning Section Chief)		Date	Time
SHAUN STEWART			DUANE DURGEE		05/25/2017	1203

Division/Group Assignment List (ICS 204 WF)

1. Incident Name:			3.			
WEST MIMS			III		INITIAL ATTACK	
2. Operational Period: DAY SHIFT 0730-1930						
Date/Time From: 05/26/2017 0730 FRI		Date/Time To: 05/26/2017 1930 FRI				
4. Operations Personnel						
PLANNING OPERATIONS CHIEF		TRENT INGRAM PHIL DANIELS (T)		OPERATIONS CHIEF		RICK DOLAN FRED BOEHM
BRANCH DIRECTOR		MARC CRAIN CHRIS LUNDGREN (T)		DIVISION/GROUP SUPERVISOR		GREGG BUCKALEW ARTURO GASDIK (T)
SAFETY		LARRY CONNELL		AIR TACTICAL GROUP SUPERVISOR		MARK NUNEZ KEN MCLAUGHLIN
6. Control Operations/Work Assignments:						
Task						
<ul style="list-style-type: none"> • Respond to any new starts as requested by OKR duty officer. • Coordinate initial attack action with assigned aviation and/or ground assets. 						
Purpose						
<ul style="list-style-type: none"> • Ensure timely response on any initial attack within OKR jurisdictional boundaries and vicinity. 						
End State						
<ul style="list-style-type: none"> • Fire activity has been detected and appropriate action has been initiated. 						
7. Special Instructions:						
<p>Contact Resource Advisors for any cultural or archeological needs, as well as, RCW concerns. Ensure LCES is in place before operations begin and stay hydrated. Drive defensively and with lights on at all times. Communications: Use the tactical channel for the division you are in. Staging on east side at Refuge office.</p> <p>Use caution when working around logging operations.</p> <p>Medical Emergency Channel: Command ETA for Ambulance to Scene: Air: 20 – 30 mins Ground: 10 - 15 mins Paved roads only. IWI – IC or approved person will use Channel 16 (Air Guard) for contact with air ambulance Air Ambulance landing zone to be determined by IWI – IC Utilize engines to provide dust abatement, as needed, prior to air ambulance landing</p> <p>For IA protocol see page 7</p>						
8. Division/Group Communication Summary						
Function	Channel	RX Frequency N/W	RX Tone/NAC	TX Frequency N/W	TX Tone/NAC	Mode
COMMAND	3	159.1200N	NONE	151.3700N	82.5	A
AIR TO GROUND	4	169.2000N	NONE	169.2000N	NONE	A
TACTICAL	1	154.2800N	NONE	154.2800N	NONE	A
AIR TO GROUND	14	166.6750N	NONE	166.6750N	NONE	A
AIR TO GROUND	15	169.1500N	NONE	169.1500N	NONE	A
AIR GUARD	16	168.6250N	NONE	168.6250N	110.9	A
9. Prepared By (Resource Unit Leader)			Approved By (Planning Section Chief)		Date	Time
SHAUN STEWART			DUANE DURGEE		05/25/2017	1203

Division/Group Assignment List (ICS 204 WF)

1. Incident Name:			3.			
WEST MIMS			III		M	
2. Operational Period: DAY SHIFT 0730-1930						
Date/Time From: 05/26/2017 0730 FRI		Date/Time To: 05/26/2017 1930 FRI				
4. Operations Personnel						
PLANNING OPERATIONS CHIEF		TRENT INGRAM PHIL DANIELS (T)		OPERATIONS CHIEF		RICK DOLAN FRED BOEHM
BRANCH DIRECTOR		MARC CRAIN CHRIS LUNDGREN (T)		DIVISION/GROUP SUPERVISOR		DAVID SMITH JASON LAGO (T)
SAFETY		LARRY CONNELL		AIR TACTICAL GROUP SUPERVISOR		MARK NUNEZ, KEN MCLAUGHLIN
5. Resources Assigned this Period						
Strike Team / Task Force / Resource Designator		LWD	Leader	Number Persons	Drop Off PT./Time	Pick Up PT./Time
TFLD O-385		06/08	MARVIN ROYBAL	1	EAST CAMP/0730	EAST CAMP/1930
TFLD (T) O-670		06/01	MIKE BROD	1	EAST CAMP/0730	EAST CAMP/1930
ENG6 AR-OZF - SYL - E-671 E-283			UNSTAFFED	3	EAST CAMP/0730	EAST CAMP/1930
ENG6 NAX - BRUSH 7-4 E-848		05/31	MAX BORINO	3	EAST CAMP/0730	EAST CAMP/1930
ENG6 UNIT #9663 - SMITHVILLE TF6 E-259		05/26	COLTON CURLES	3	EAST CAMP/0730	EAST CAMP/1930
ENG6 NMN4S - LAS VEGAS STATE FORESTRY - ENGIN E-605		05/26	JARROD DURAN	3	EAST CAMP/0730	EAST CAMP/1930
TPL2 GFC 1417 E-665		05/24	ERIC SMITH	1	EAST CAMP/0730	EAST CAMP/1930
TPL3 GFC 4202120 E-666		05/25	STEVEN JOHNSON	1	EAST CAMP/0730	EAST CAMP/1930
WTS2 WET 'N RED, LLC - 58592 E-365		05/23	ALLEN WEST	2	EAST CAMP/0730	EAST CAMP/1930
HEQB O-601		05/28	JASON B FOREMAN	1	EAST CAMP/0730	EAST CAMP/1930
EMPF O-560		06/02	LIONEL VAN GURP	1		
SOF2 O-195		05/27	JOHN MICHAEL MCGEE	1	EAST CAMP/0730	EAST CAMP/1930
SOF2 O-589		05/27	GALEN R YOUNG	1	EAST CAMP/0730	EAST CAMP/1930
SOF2(T) O-279		06/01	ROBERT THORP	1	EAST CAMP/0730	EAST CAMP/1930
8. Division/Group Communication Summary						
Function	Channel	RX Frequency N/W	RX Tone/NAC	TX Frequency N/W	TX Tone/NAC	Mode
COMMAND	3	159.1200N	NONE	151.3700N	82.5	A
AIR TO GROUND	4	169.2000N	NONE	169.2000N	NONE	A
TACTICAL	9	159.2850N	NONE	159.2850N	156.7	A
AIR TO GROUND	14	166.6750N	NONE	166.6750N	NONE	A
AIR TO GROUND	15	169.1500N	NONE	169.1500N	NONE	A
AIR GUARD	16	168.6250N	NONE	168.6250N	110.9	A
9. Prepared By (Resource Unit Leader)			Approved By (Planning Section Chief)		Date	Time
SHAUN STEWART			DUANE DURGEE		05/25/2017	1203

Division/Group Assignment List (ICS 204 WF)

1. Incident Name:			3.			
WEST MIMS			III	M		
2. Operational Period: DAY SHIFT 0730-1930						
Date/Time From:	Date/Time To:					
05/26/2017 0730 FRI	05/26/2017 1930 FRI					
4. Operations Personnel						
PLANNING OPERATIONS CHIEF	TRENT INGRAM PHIL DANIELS (T)		OPERATIONS CHIEF	RICK DOLAN FRED BOEHM		
BRANCH DIRECTOR	MARC CRAIN CHRIS LUNDGREN (T)		DIVISION/GROUP SUPERVISOR	DAVID SMITH JASON LAGO (T)		
SAFETY	LARRY CONNELL		AIR TACTICAL GROUP SUPERVISOR	MARK NUNEZ, KEN MCLAUGHLIN		
6. Control Operations/Work Assignments:						
Task						
<ul style="list-style-type: none"> • Prepare for strategic firing of control lines. • Respond to any new starts within the division. • Patrol and mop up fuels appropriate to fuel type and anticipated weather and fire behavior. 						
Purpose						
<ul style="list-style-type: none"> • Keep fire west of Swamp Edge Break. 						
End State						
<ul style="list-style-type: none"> • Fire is contained by adequate control line to reduce threat to escape; minimizing damage to private timberlands, private lands, and other resource values at risk. 						
7. Special Instructions:						
Ensure LCES is in place before operations begin and stay hydrated. Drive defensively and with lights on at all times. Identify escape routes.						
Use caution when working around logging operations.						
For IA protocol see page 7						
Medical Emergency Channel: Command						
ETA for Ambulance to Scene:						
Air: 20 – 30 mins						
Ground: 10 - 15 mins Paved roads only.						
IWI – IC or approved person will use Channel 16 (Air Guard) for contact with air ambulance						
Air Ambulance landing zone to be determined by IWI – IC						
Utilize engines to provide dust abatement, as needed, prior to air ambulance landing						
8. Division/Group Communication Summary						
Function	Channel	RX Frequency N/W	RX Tone/NAC	TX Frequency N/W	TX Tone/NAC	Mode
COMMAND	3	159.1200N	NONE	151.3700N	82.5	A
AIR TO GROUND	4	169.2000N	NONE	169.2000N	NONE	A
TACTICAL	9	159.2850N	NONE	159.2850N	156.7	A
AIR TO GROUND	14	166.6750N	NONE	166.6750N	NONE	A
AIR TO GROUND	15	169.1500N	NONE	169.1500N	NONE	A
AIR GUARD	16	168.6250N	NONE	168.6250N	110.9	A
9. Prepared By (Resource Unit Leader)			Approved By (Planning Section Chief)		Date	Time
SHAUN STEWART			DUANE DURGEE		05/25/2017	1203

Division/Group Assignment List (ICS 204 WF)

1. Incident Name:			3.			
WEST MIMS			III		N	
2. Operational Period: DAY SHIFT 0730-1930						
Date/Time From: 05/26/2017 0730 FRI		Date/Time To: 05/26/2017 1930 FRI				
4. Operations Personnel						
PLANNING OPERATIONS CHIEF		TRENT INGRAM PHIL DANIELS (T)		OPERATIONS CHIEF		RICK DOLAN FRED BOEHM
BRANCH DIRECTOR		MARC CRAIN CHRIS LUNDGREN (T)		DIVISION/GROUP SUPERVISOR		KAREN SCHOLL CHRIS RANKIN (T)
SAFETY		LARRY CONNELL		AIR TACTICAL GROUP SUPERVISOR		MARK NUNEZ, KEN MCLAUGHLIN
5. Resources Assigned this Period						
Strike Team / Task Force / Resource Designator		LWD	Leader	Number Persons	Drop Off PT./Time	Pick Up PT./Time
TFLD O-591		05/28	CLAYTON W SWANGER	1	EAST CAMP/0730	EAST CAMP/1930
ENG3 - 335 E-756		05/31	WILLIAM F MARCKS	5	EAST CAMP/0730	EAST CAMP/1930
ENG6 TRINIDAD FIRE 2930 E-774		05/29	MIGUEL ORTIZ	3	EAST CAMP/0730	EAST CAMP/1930
ENG6 - MBF - ENGINE 694 E-776		06/03	JOSH MCGEE	3	EAST CAMP/0730	EAST CAMP/1930
WT2 - AZCOF - WT-4-74 E-600		05/26	JASON KOLB	2	EAST CAMP/0730	EAST CAMP/1930
EMPF WITH UTV O-346		05/26	DEAN CARPENTER	1	EAST CAMP/0730	EAST CAMP/1930
SOF2 O-195		05/27	JOHN MCGEE	1	EAST CAMP/0730	EAST CAMP/1930
SOF2 O-589		05/27	GALEN YOUNG	1	EAST CAMP/0730	EAST CAMP/1930
SOF2 (T) O-279		06/01	ROBERT THORP	1	EAST CAMP/0730	EAST CAMP/1930
8. Division/Group Communication Summary						
Function	Channel	RX Frequency N/W	RX Tone/NAC	TX Frequency N/W	TX Tone/NAC	Mode
COMMAND	3	159.1200N	NONE	151.3700N	82.5	A
AIR TO GROUND	4	169.2000N	NONE	169.2000N	NONE	A
TACTICAL	10	168.3500N	NONE	168.3500N	NONE	A
AIR TO GROUND	14	166.6750N	NONE	166.6750N	NONE	A
AIR TO GROUND	15	169.1500N	NONE	169.1500N	NONE	A
AIR GUARD	16	168.6250N	NONE	168.6250N	110.9	A
9. Prepared By (Resource Unit Leader)			Approved By (Planning Section Chief)		Date	Time
SHAUN STEWART			DUANE DURGEE		05/25/2017	1203

Division/Group Assignment List (ICS 204 WF)

1. Incident Name:			3.			
WEST MIMS			Branch:		Division/Group:	
2. Operational Period: DAY SHIFT 0730-1930			III		N	
Date/Time From: 05/26/2017 0730 FRI		Date/Time To: 05/26/2017 1930 FRI				
4. Operations Personnel						
PLANNING OPERATIONS CHIEF		TRENT INGRAM PHIL DANIELS (T)		OPERATIONS CHIEF		
BRANCH DIRECTOR		MARC CRAIN CHRIS LUNDGREN (T)		DIVISION/GROUP SUPERVISOR		
SAFETY		LARRY CONNELL		AIR TACTICAL GROUP SUPERVISOR		
				RICK DOLAN FRED BOEHM		
				KAREN SCHOLL CHRIS RANKIN (T)		
				MARK NUNEZ, KEN MCLAUGHLIN		
6. Control Operations/Work Assignments:						
Task						
<ul style="list-style-type: none"> • Respond to any new starts within the division. • Patrol and mop up fuels appropriate to fuel type and anticipated weather and fire behavior. 						
Purpose						
<ul style="list-style-type: none"> • Keep fire west of Swamp Edge Break and south of Crawford Road. 						
End State						
<ul style="list-style-type: none"> • Fire is contained by adequate control line to reduce threat to escape; minimizing damage to private timberlands, private lands, and other resource values at risk. 						
7. Special Instructions:						
Ensure LCES is in place before operations begin and stay hydrated. Drive defensively and with lights on at all times. Identify escape routes.						
Use caution when working around logging operations.						
For IA protocol see page 7						
Medical Emergency Channel: Command						
ETA for Ambulance to Scene:						
Air: 20 – 30 mins						
Ground: 10 - 15 mins Paved roads only.						
IWI – IC or approved person will use Channel 16 (Air Guard) for contact with air ambulance						
Air Ambulance landing zone to be determined by IWI – IC						
Utilize engines to provide dust abatement, as needed, prior to air ambulance landing						
8. Division/Group Communication Summary						
Function	Channel	RX Frequency N/W	RX Tone/NAC	TX Frequency N/W	TX Tone/NAC	Mode
COMMAND	3	159.1200N	NONE	151.3700N	82.5	A
AIR TO GROUND	4	169.2000N	NONE	169.2000N	NONE	A
TACTICAL	10	168.3500N	NONE	168.3500N	NONE	A
AIR TO GROUND	14	166.6750N	NONE	166.6750N	NONE	A
AIR TO GROUND	15	169.1500N	NONE	169.1500N	NONE	A
AIR GUARD	16	168.6250N	NONE	168.6250N	110.9	A
9. Prepared By (Resource Unit Leader)			Approved By (Planning Section Chief)		Date	Time
SHAUN STEWART			DUANE DURGEE		05/25/2017	1203

Division/Group Assignment List (ICS 204 WF)

1. Incident Name:			3.			
WEST MIMS			Branch:		Division/Group:	
2. Operational Period: DAY SHIFT 0730-1930			III		O	
Date/Time From: 05/26/2017 0730 FRI		Date/Time To: 05/26/2017 1930 FRI				
4. Operations Personnel						
PLANNING OPERATIONS CHIEF		TRENT INGRAM PHIL DANIELS (T)		OPERATIONS CHIEF		
BRANCH DIRECTOR		MARC CRAIN CHRIS LUNDGREN (T)		DIVISION/GROUP SUPERVISOR		
SAFETY		LARRY CONNELL		AIR TACTICAL GROUP SUPERVISOR		
				RICK DOLAN FRED BOEHM		
				SHAWN ALEXANDER, ROB THORPE MICHAEL GUE (T)		
				MARK NUNEZ, KEN MCLAUGHLIN		
5. Resources Assigned this Period						
Strike Team / Task Force / Resource Designator		LWD	Leader	Number Persons	Drop Off PT./Time	Pick Up PT./Time
ICT4 (T) E-657.2		05/27	SAM I MARKSON	1	EAST CAMP/0730	EAST CAMP/1930
HC2I - NMCIF - ACOMA #1 C-12		05/25	ANDREW M HENRY	21	EAST CAMP/0730	EAST CAMP/1930
ENG6 - 2661 - BRAZORIA REFUGE E-657		05/27	NORTHSTONE	2	EAST CAMP/0730	EAST CAMP/1930
ENG6 - FWS - 462 E-261		06/03	CHRISTOPHER NOTHSTINE	3	EAST CAMP/0730	EAST CAMP/1930
ENGINE - T6 - 5670 E-726		05/27	BRANDON RAMIREZ	2	EAST CAMP/0730	EAST CAMP/1930
TFLD O-635		05/31	BRIAN ANDERSON	1	EAST CAMP/0730	EAST CAMP/1930
MODULE - SUPPRESSION - BIA SUPPRESSION MODULE #2 O-522		05/26	SCOTTY KOPEPASSAH	11	EAST CAMP/0730	EAST CAMP/1930
ENG6 - 611 E-663		05/29	JORDAN BLACK	3	EAST CAMP/0730	EAST CAMP/1930
ENG6 - NMLNF621 - SACRAMENTO RD E-765		05/30	TIM MCELHNEY	4	EAST CAMP/0730	EAST CAMP/1930
ENG6 J3 CONTRACTING - 07 - VIN# UNLISTED E-732		05/31	ANTHONY PARLIC	3	EAST CAMP/0730	EAST CAMP/1930
ENG6 J3 CONTRACTING - 12 - VIN# 002974 E-733		05/31	LANCE WOLLEBAEK	3	EAST CAMP/0730	EAST CAMP/1930
8. Division/Group Communication Summary						
Function	Channel	RX Frequency N/W	RX Tone/NAC	TX Frequency N/W	TX Tone/NAC	Mode
COMMAND	3	159.1200N	NONE	151.3700N	82.5	A
AIR TO GROUND	4	169.2000N	NONE	169.2000N	NONE	A
TACTICAL	11	163.7125N	NONE	163.7125N	NONE	A
AIR TO GROUND	14	166.6750N	NONE	166.6750N	NONE	A
AIR TO GROUND	15	169.1500N	NONE	169.1500N	NONE	A
AIR GUARD	16	168.6250N	NONE	168.6250N	110.9	A
9. Prepared By (Resource Unit Leader)			Approved By (Planning Section Chief)		Date	Time
SHAUN STEWART			DUANE DURGEE		05/25/2017	1203

Division/Group Assignment List (ICS 204 WF)

1. Incident Name:			3.			
WEST MIMS			III		O	
2. Operational Period: DAY SHIFT 0730-1930						
Date/Time From: 05/26/2017 0730 FRI		Date/Time To: 05/26/2017 1930 FRI				
4. Operations Personnel						
PLANNING OPERATIONS CHIEF		TRENT INGRAM PHIL DANIELS (T)		OPERATIONS CHIEF		RICK DOLAN FRED BOEHM
BRANCH DIRECTOR		MARC CRAIN CHRIS LUNDGREN (T)		DIVISION/GROUP SUPERVISOR		SHAWN ALEXANDER, ROB THORPE MICHAEL GUE (T)
SAFETY		LARRY CONNELL		AIR TACTICAL GROUP SUPERVISOR		MARK NUNEZ, KEN MCLAUGHLIN
5. Resources Assigned this Period						
Strike Team / Task Force / Resource Designator		LWD	Leader	Number Persons	Drop Off PT./Time	Pick Up PT./Time
TFLD O-592		05/28	DALE E MIDDLETON	1	EAST CAMP/0730	EAST CAMP/1930
ENG6 - 161 E-656		05/27	TOD BENNETT	3	EAST CAMP/0730	EAST CAMP/1930
ENG6 - BOULDER COUNTY SHERIFF - ENGINE 6531 E-847		05/31	KENYON SHEPHARD	6	EAST CAMP/0730	EAST CAMP/1930
WTS2 - BONNELL SAND & GRAVEL I E-366		06/07	HARLIN VINCENT	1	EAST CAMP/0730	EAST CAMP/1930
STEQ O-679		06/03	DAVID BROWN	1	EAST CAMP/0730	EAST CAMP/1930
STEQ (T) O-573		05/27	OLIVER M WAHLQUIST	1	EAST CAMP/0730	EAST CAMP/1930
TPL3 - TRACTOR PLOW - T3 - GFC3266 E-370		06/03	SPENCER WOOD	2	EAST CAMP/0730	EAST CAMP/1930
TPL2 - TRACTOR PLOW - T2 - GFC3307 E-371		06/03	CHRIS W MULLIS	2	EAST CAMP/0730	EAST CAMP/1930
TPL2 - TRACTOR PLOW - T2 - GFC3295 E-372		06/03	BRIAN THOMPSON	2	EAST CAMP/0730	EAST CAMP/1930
TRACTOR PLOW - T4 - MSR2 E-594		06/03		1	EAST CAMP/0730	EAST CAMP/1930
EMPF O-388		05/27	KYLE PORT	1	EAST CAMP/0730	EAST CAMP/1930
SOF2 O-195 520-591-2434		05/27	JOHN MCGEE	1	EAST CAMP/0730	EAST CAMP/1930
SOF2 (T) O-279		06/01	ROBERT THORP	1	EAST CAMP/0730	EAST CAMP/1930
SOF2 O-589		05/27	GALEN R YOUNG	1	EAST CAMP/0730	EAST CAMP/0730
6. Control Operations/Work Assignments:						
8. Division/Group Communication Summary						
Function	Channel	RX Frequency N/W	RX Tone/NAC	TX Frequency N/W	TX Tone/NAC	Mode
COMMAND	3	159.1200N	NONE	151.3700N	82.5	A
AIR TO GROUND	4	169.2000N	NONE	169.2000N	NONE	A
TACTICAL	11	163.7125N	NONE	163.7125N	NONE	A
AIR TO GROUND	14	166.6750N	NONE	166.6750N	NONE	A
AIR TO GROUND	15	169.1500N	NONE	169.1500N	NONE	A
AIR GUARD	16	168.6250N	NONE	168.6250N	110.9	A
9. Prepared By (Resource Unit Leader)			Approved By (Planning Section Chief)		Date	Time
SHAUN STEWART			DUANE DURGEE		05/25/2017	1203

Division/Group Assignment List (ICS 204 WF)

1. Incident Name:			3.			
WEST MIMS			Branch:		Division/Group:	
2. Operational Period: DAY SHIFT 0730-1930			III		O	
Date/Time From: 05/26/2017 0730 FRI		Date/Time To: 05/26/2017 1930 FRI				
4. Operations Personnel						
PLANNING OPERATIONS CHIEF		TRENT INGRAM PHIL DANIELS (T)		OPERATIONS CHIEF		
BRANCH DIRECTOR		MARC CRAIN CHRIS LUNDGREN (T)		DIVISION/GROUP SUPERVISOR		
SAFETY		LARRY CONNELL		AIR TACTICAL GROUP SUPERVISOR		
				RICK DOLAN FRED BOEHM		
				SHAWN ALEXANDER, ROB THORPE MICHAEL GUE (T)		
				MARK NUNEZ, KEN MCLAUGHLIN		
6. Control Operations/Work Assignments:						
Task						
<ul style="list-style-type: none"> • Respond to any new starts within the division. • Patrol and mop up fuels appropriate to fuel type and anticipated weather and fire behavior. • 						
Purpose						
<ul style="list-style-type: none"> • Keep fire within established fire containment lines. • 						
End State						
<ul style="list-style-type: none"> • Fire is contained by adequate control line to reduce threat to escape; minimizing damage to private timberlands, private lands, and other resource values at risk. 						
7. Special Instructions:						
Ensure LCES are in place before operations begin and stay hydrated. Drive defensively and with lights on at all times. Identify escape routes.						
Use caution when working around logging operations.						
For IA protocol see page 7						
Medical Emergency Channel: Command						
ETA for Ambulance to Scene:						
Air: 20 – 30 mins						
Ground: 10 - 15 mins Paved roads only.						
IWI – IC or approved person will use Channel 16 (Air Guard) for contact with air ambulance						
Air Ambulance landing zone to be determined by IWI – IC						
Utilize engines to provide dust abatement, as needed, prior to air ambulance landing						
8. Division/Group Communication Summary						
Function	Channel	RX Frequency N/W	RX Tone/NAC	TX Frequency N/W	TX Tone/NAC	Mode
COMMAND	3	159.1200N	NONE	151.3700N	82.5	A
AIR TO GROUND	4	169.2000N	NONE	169.2000N	NONE	A
TACTICAL	11	163.7125N	NONE	163.7125N	NONE	A
AIR TO GROUND	14	166.6750N	NONE	166.6750N	NONE	A
AIR TO GROUND	15	169.1500N	NONE	169.1500N	NONE	A
AIR GUARD	16	168.6250N	NONE	168.6250N	110.9	A
9. Prepared By (Resource Unit Leader)			Approved By (Planning Section Chief)		Date	Time
SHAUN STEWART			DUANE DURGEE		05/25/2017	1203

Division/Group Assignment List (ICS 204 WF)

1. Incident Name:			3.			
WEST MIMS			III		STAGING	
2. Operational Period: DAY SHIFT 0730-1930						
Date/Time From: 05/26/2017 0730 FRI		Date/Time To: 05/26/2017 1930 FRI				
4. Operations Personnel						
PLANNING OPERATIONS CHIEF		TRENT INGRAM PHIL DANIELS (T)		OPERATIONS CHIEF		RICK DOLAN FRED BOEHM
BRANCH DIRECTOR		MARC CRAIN CHRIS LUNDGREN (T)		STAGING AREA MANAGER		CHRIS RUDD
SAFETY		LARRY CONNELL		AIR TACTICAL GROUP SUPERVISOR		MARK NUNEZ, KEN MCLAUGHLIN
5. Resources Assigned this Period						
Strike Team / Task Force / Resource Designator		LWD	Leader	Number Persons	Drop Off PT./Time	Pick Up PT./Time
ENG7 - GFC4202610 E-711		05/26			EAST CAMP/0730	EAST CAMP/1930
ENG6 - REDBIRD E6171 E-447		06/06	RUPERT NOWLIN	2	EAST CAMP/0730	EAST CAMP/1930
EMPF E-376		05/24	PAUL PUGH	1	EAST CAMP/0730	EAST CAMP/1930
STEN O-563		05/26	DANIEL GORE	1	JOHN BETHEA/0730	JOHN BETHEA/1930
TRACTOR PLOW - T3 - GFC3195 E-684		05/26	MATTHEW DEAN WILSON		JOHN BETHEA/0730	JOHN BETHEA/1930
TRACTOR PLOW - T4 - GFC3201 E-685		05/26	BILLY WENDELON BROWN II		JOHN BETHEA/0730	JOHN BETHEA/1930
TRACTOR PLOW - T4 - GFC1029 E-686		05/26	JUSTIN KEITH JORDAN		JOHN BETHEA/0730	JOHN BETHEA/1930
TPL4 - SMR #4441 E-508		05/28		1	JOHN BETHEA/0730	JOHN BETHEA/1930
STEN O-594		05/29	MICHAEL SMITH	1	JOHN BETHEA/0730	JOHN BETHEA/1930
ENG6 - STH ARK 112 E-773		05/29	MELISSA FRIESS	3	JOHN BETHEA/0730	JOHN BETHEA/1930
ENG6 - NC-NCF E-691 E-255		05/27	CODY TROUT THOMAS	3	JOHN BETHEA/0730	JOHN BETHEA/1930
ENGINE - T6 - KY-KYS - 310 E-660		05/26	ADAM R MCGUIRE	2	JOHN BETHEA/0730	JOHN BETHEA/1930
STEN O-657		05/30	JERRY VAN DYNE	1	JOHN BETHEA/0730	JOHN BETHEA/1930
8. Division/Group Communication Summary						
Function	Channel	RX Frequency N/W	RX Tone/NAC	TX Frequency N/W	TX Tone/NAC	Mode
COMMAND	3	159.1200N	NONE	151.3700N	82.5	A
AIR TO GROUND	4	169.2000N	NONE	169.2000N	NONE	A
TACTICAL	10	168.3500N	NONE	168.3500N	NONE	A
AIR TO GROUND	14	166.6750N	NONE	166.6750N	NONE	A
AIR TO GROUND	15	169.1500N	NONE	169.1500N	NONE	A
AIR GUARD	16	168.6250N	NONE	168.6250N	110.9	A
9. Prepared By (Resource Unit Leader)			Approved By (Planning Section Chief)		Date	Time
SHAUN STEWART			DUANE DURGEE		05/25/2017	1203

Division/Group Assignment List (ICS 204 WF)

1. Incident Name:			3.			
WEST MIMS			III	STAGING		
2. Operational Period: DAY SHIFT 0730-1930						
Date/Time From: 05/26/2017 0730 FRI		Date/Time To: 05/26/2017 1930 FRI				
4. Operations Personnel						
PLANNING OPERATIONS CHIEF		TRENT INGRAM PHIL DANIELS (T)		OPERATIONS CHIEF		RICK DOLAN FRED BOEHM
BRANCH DIRECTOR		MARC CRAIN CHRIS LUNDGREN (T)		STAGING AREA MANAGER		CHRIS RUDD
SAFETY		LARRY CONNELL		AIR TACTICAL GROUP SUPERVISOR		MARK NUNEZ, KEN MCLAUGHLIN
6. Control Operations/Work Assignments:						
Task						
<ul style="list-style-type: none"> • Assess availability of surplus resources for reassignment. • Advise Planning Operations which resources are surplus and available to reallocate within incident. 						
Purpose						
<ul style="list-style-type: none"> • To provide logistical support for resources pending reassignment or demobilization. 						
End State						
<ul style="list-style-type: none"> • A pool of resources are readily available for reassignment or demobilization. 						
7. Special Instructions:						
For IA protocol see page 7						
Use caution when working around logging operations.						
Staging Area Manager Phone Numbers:						
ADAM DUMMER 831-238-0991 CHRISTOPHER RUDD 541-660-0634						
Medical Emergency Channel: Command						
ETA for Ambulance to Scene:						
Air: 20 – 30 mins						
Ground: 10 - 15 mins Paved roads only.						
IWI – IC or approved person will use Channel 16 (Air Guard) for contact with air ambulance						
Air Ambulance landing zone to be determined by IWI – IC						
Utilize engines to provide dust abatement, as needed, prior to air ambulance landing						
8. Division/Group Communication Summary						
Function	Channel	RX Frequency N/W	RX Tone/NAC	TX Frequency N/W	TX Tone/NAC	Mode
COMMAND	3	159.1200N	NONE	151.3700N	82.5	A
AIR TO GROUND	4	169.2000N	NONE	169.2000N	NONE	A
TACTICAL	10	168.3500N	NONE	168.3500N	NONE	A
AIR TO GROUND	14	166.6750N	NONE	166.6750N	NONE	A
AIR TO GROUND	15	169.1500N	NONE	169.1500N	NONE	A
AIR GUARD	16	168.6250N	NONE	168.6250N	110.9	A
9. Prepared By (Resource Unit Leader)			Approved By (Planning Section Chief)		Date	Time
SHAUN STEWART			DUANE DURGEE		05/25/2017	1203

Division/Group Assignment List (ICS 204 WF)

1. Incident Name:			3.			
WEST MIMS			Branch:		Division/Group:	
2. Operational Period: DAY SHIFT 0730-1930			IV		A	
Date/Time From: 05/26/2017 0730 FRI		Date/Time To: 05/26/2017 1930 FRI				
4. Operations Personnel						
PLANNING OPERATIONS CHIEF		TRENT INGRAM PHIL DANIELS (T)		OPERATIONS CHIEF		RICK DOLAN FRED BOEHM
BRANCH DIRECTOR		STEVE MILLER		DIVISION/GROUP SUPERVISOR		TOM TALBOT JEFF BOSTWICK (T)
SAFETY		LARRY CONNELL		AIR TACTICAL GROUP SUPERVISOR		MARK NUNEZ, KEN MCLAUGHLIN
5. Resources Assigned this Period						
Strike Team / Task Force / Resource Designator		LWD	Leader	Number Persons	Drop Off PT./Time	Pick Up PT./Time
TFLD O-606		05/28	DAREK PEPPE	1	EAST CAMP/0730	EAST CAMP 1930/
ENG3 CO-PBS DEER MOUNTAIN FPD 12 E-280		06/06	JOSEPH CRAIG WATTS	3	EAST CAMP/0730	EAST CAMP 1930/
ENG6 MT-KNF 631 E-285		05/31	JULIAN ADAUTO	5	EAST CAMP/0730	EAST CAMP 1930/
ENG6 GFC 4201278 E-706		05/26	DOUG ANDREWS	3	EAST CAMP/0730	EAST CAMP 1930/
ENG6 MS-MNF 6171 E-77		06/05	DAVID GIBSON	3	EAST CAMP/0730	EAST CAMP 1930/
ENG6 AR-OZF 631 E-56		06/04	DARRYL BRIGHTWELL	3	EAST CAMP/0730	EAST CAMP 1930/
ENG6 J3 CONTSTRUCTION 07 E-731		05/31	CURTIC PUMPHREY	3	EAST CAMP/0730	EAST CAMP 1930/
ENG6 KY-KYS 410 E-661		05/26	KEVIN RADSCHWEIT	2	EAST CAMP/0730	EAST CAMP 1930/
WTS2 TIPTON & YOUNG E-347		06/05	ROBERT COYLE	1	EAST CAMP/0730	EAST CAMP 1930/
WTS2 STRICKLANDS E-272		06/04	JOHN TINER	1	EAST CAMP/0730	EAST CAMP 1930/
EMPF E-375.2		06/14	MARTIN CARRILLO	1	EAST CAMP/0730	EAST CAMP 1930/
SOF2 O-540 229-561-4259		06/12	JACK BENZILIO	1	EAST CAMP/0730	EAST CAMP 1930/
6. Control Operations/Work Assignments:						
Task						
<ul style="list-style-type: none"> • Patrol and mop up fuels appropriate to fuel type and anticipated weather and fire behavior. 						
8. Division/Group Communication Summary						
Function	Channel	RX Frequency N/W	RX Tone/NAC	TX Frequency N/W	TX Tone/NAC	Mode
AIR TO GROUND	4	169.2000N	NONE	169.2000N	NONE	A
COMMAND	8	159.2700N	156.7	151.1000N	123.0	A
TACTICAL	12	159.4425N	NONE	159.4425N	NONE	A
AIR TO GROUND	14	166.6750N	NONE	166.6750N	NONE	A
AIR TO GROUND	15	169.1500N	NONE	169.1500N	NONE	A
AIR GUARD	16	168.6250N	NONE	168.6250N	110.9	A
9. Prepared By (Resource Unit Leader)			Approved By (Planning Section Chief)		Date	Time
SHAUN STEWART			DUANE DURGEE		05/25/2017	1203

Division/Group Assignment List (ICS 204 WF)

1. Incident Name:			3.			
WEST MIMS			IV		A	
2. Operational Period: DAY SHIFT 0730-1930						
Date/Time From: 05/26/2017 0730 FRI		Date/Time To: 05/26/2017 1930 FRI				
4. Operations Personnel						
PLANNING OPERATIONS CHIEF		TRENT INGRAM PHIL DANIELS (T)		OPERATIONS CHIEF		RICK DOLAN FRED BOEHM
BRANCH DIRECTOR		STEVE MILLER		DIVISION/GROUP SUPERVISOR		TOM TALBOT JEFF BOSTWICK (T)
SAFETY		LARRY CONNELL		AIR TACTICAL GROUP SUPERVISOR		MARK NUNEZ, KEN MCLAUGHLIN
6. Control Operations/Work Assignments:						
<ul style="list-style-type: none"> • Respond to any new starts within the division. Purpose <ul style="list-style-type: none"> • Keep fire north of FL 2. End State <ul style="list-style-type: none"> • Fire is contained by adequate control line to reduce threat to escape; minimizing damage to private timberlands, private lands, and other resource values at risk. 						
7. Special Instructions:						
<p>Ensure LCES is in place before operations begin and stay hydrated. Drive defensively and with lights on at all times. Identify escape routes. Bridge near DP 9 restricted to pickups - No engines. Bridge on swamp perimeter road just east of first Branch has steep drop offs - 1 lane travel - watch for barricades.</p> <p>Use caution when working around logging operations.</p> <p>For IA protocol see page 7</p> <p>Medical Emergency Channel: Command ETA for Ambulance to Scene: Air: 20 – 30 mins Ground: 10 - 15 mins Paved roads only. IWI – IC or approved person will use Channel 16 (Air Guard) for contact with air ambulance Air Ambulance landing zone to be determined by IWI – IC Utilize engines to provide dust abatement, as needed, prior to air ambulance landing</p>						
8. Division/Group Communication Summary						
Function	Channel	RX Frequency N/W	RX Tone/NAC	TX Frequency N/W	TX Tone/NAC	Mode
AIR TO GROUND	4	169.2000N	NONE	169.2000N	NONE	A
COMMAND	8	159.2700N	156.7	151.1000N	123.0	A
TACTICAL	12	159.4425N	NONE	159.4425N	NONE	A
AIR TO GROUND	14	166.6750N	NONE	166.6750N	NONE	A
AIR TO GROUND	15	169.1500N	NONE	169.1500N	NONE	A
AIR GUARD	16	168.6250N	NONE	168.6250N	110.9	A
9. Prepared By (Resource Unit Leader)			Approved By (Planning Section Chief)		Date	Time
SHAUN STEWART			DUANE DURGEE		05/25/2017	1203

Division/Group Assignment List (ICS 204 WF)

1. Incident Name:			3.			
WEST MIMS			Branch:		Division/Group:	
2. Operational Period: DAY SHIFT 0730-1930			IV		Y	
Date/Time From: 05/26/2017 0730 FRI		Date/Time To: 05/26/2017 1930 FRI				
4. Operations Personnel						
PLANNING OPERATIONS CHIEF		TRENT INGRAM PHIL DANIELS (T)		OPERATIONS CHIEF		RICK DOLAN FRED BOEHM
BRANCH DIRECTOR		STEVE MILLER		DIVISION/GROUP SUPERVISOR		RANDY GREGORY SEAN BASSO (T)
SAFETY		LARRY CONNELL		AIR TACTICAL GROUP SUPERVISOR		MARK NUNEZ, KEN MCLAUGHLIN
5. Resources Assigned this Period						
Strike Team / Task Force / Resource Designator		LWD	Leader	Number Persons	Drop Off PT./Time	Pick Up PT./Time
MODULE - WILDLAND FIRE - SW SAGUARO NP O-477		05/28	JASON THIVENER	7	EAST CAMP/0730	EAST CAMP/1930
TFLD O-508		05/30	LISA M GOWE	1	EAST CAMP/0730	EAST CAMP/1930
ENG3 CO-DRS DURANGO BRUSH 31 E-869		06/03	ALLEN R OTTMAN	4	EAST CAMP/0730	EAST CAMP/1930
ENG6 MURRAY 86 - 4201016 E-61		05/26	KENNETH HARKINS	2	EAST CAMP/0730	EAST CAMP/1930
ENG6 CHATTOOGA 86 E-60		05/26	ETHAN BEAID	2	EAST CAMP/0730	EAST CAMP/1930
ENG6 - BANKHEAD E611 E-654		05/26	GARY CRAIG MOORE	3	EAST CAMP/0730	EAST CAMP/1930
ENG6 NM-CIF 631 E-612		05/26	RICK LUCERO	3	EAST CAMP/0730	EAST CAMP/1930
ENG6 AR-OZF BM - E-651 E-713		05/29	PAUL DZIEKAN	3	EAST CAMP/0730	EAST CAMP/1930
WTS1 - 357 - PB 350505 HASSELL E-476		05/26	ROBERT EDENFIELD	1	EAST CAMP/0730	EAST CAMP/1930
GOAT 1 - UTV PENDER LAND E-797		06/01	KEVIN CROOM	1	EAST CAMP/0730	EAST CAMP/1930
GOAT 2 - UTV ENDICOTT E-798		06/01	THOMAS ENDICOTT	1	EAST CAMP/0730	EAST CAMP/1930
8. Division/Group Communication Summary						
Function	Channel	RX Frequency N/W	RX Tone/NAC	TX Frequency N/W	TX Tone/NAC	Mode
AIR TO GROUND	4	169.2000N	NONE	169.2000N	NONE	A
COMMAND	8	159.2700N	156.7	151.1000N	123.0	A
TACTICAL	9	159.2850N	NONE	159.2850N	156.7	A
AIR TO GROUND	14	166.6750N	NONE	166.6750N	NONE	A
AIR TO GROUND	15	169.1500N	NONE	169.1500N	NONE	A
AIR GUARD	16	168.6250N	NONE	168.6250N	110.9	A
9. Prepared By (Resource Unit Leader)			Approved By (Planning Section Chief)		Date	Time
SHAUN STEWART			DUANE DURGEE		05/25/2017	1203

Division/Group Assignment List (ICS 204 WF)

1. Incident Name:			3.			
WEST MIMS			IV		Y	
2. Operational Period: DAY SHIFT 0730-1930						
Date/Time From: 05/26/2017 0730 FRI		Date/Time To: 05/26/2017 1930 FRI				
4. Operations Personnel						
PLANNING OPERATIONS CHIEF		TRENT INGRAM PHIL DANIELS (T)		OPERATIONS CHIEF		
				RICK DOLAN FRED BOEHM		
BRANCH DIRECTOR		STEVE MILLER		DIVISION/GROUP SUPERVISOR		
				RANDY GREGORY SEAN BASSO (T)		
SAFETY		LARRY CONNELL		AIR TACTICAL GROUP SUPERVISOR		
				MARK NUNEZ, KEN MCLAUGHLIN		
5. Resources Assigned this Period						
Strike Team / Task Force / Resource Designator		LWD	Leader	Number Persons	Drop Off PT./Time	Pick Up PT./Time
TFLD O-619		05/29	JOSH GOLDSTEIN	1	EAST CAMP/0730	EAST CAMP/1930
TFLD O-648		05/31	STEVE YOUNG	1	EAST CAMP/0730	EAST CAMP/1930
ENG6 FRANKLIN 86 - GFC4202065 E-59		05/26	DOUGLAS SLAY	2	EAST CAMP/0730	EAST CAMP/1930
ENG6 NMSNF - ENGINE 661 E-604		05/26	LARRY MARTINEZ	3	EAST CAMP/0730	EAST CAMP/1930
ENG6 SC-SRF 603 E-662		05/27	BRIAN GORMAN	3	EAST CAMP/0730	EAST CAMP/1930
WTT1 - VIN# E-588		05/26	HUBERT EDENFIELD HASSELLCO	1	EAST CAMP/0730	EAST CAMP/1930
SKG4 - MS-MSR-E611 E-652		05/28	REBECCA GOOSMAN	2	EAST CAMP/0730	EAST CAMP/1930
EXCA T1 - VIN# 470405 HASSELL E-620		05/26	GREG DAVIS	1	EAST CAMP/0730	EAST CAMP/1930
EMPF E-315.2		05/29	ALYSE GUTIERREZ	1	EAST CAMP/0730	EAST CAMP/1930
SOF2 O-494		05/29	DARROLL ABEYTA	1	EAST CAMP/0730	EAST CAMP/1930
6. Control Operations/Work Assignments:						
Task						
<ul style="list-style-type: none"> • Respond to any new starts within the division. • Patrol and mop up fuels appropriate to fuel type and anticipated weather and fire behavior. Eliminate obvious smoke which will trigger unnecessary calls to 911 system. 						
8. Division/Group Communication Summary						
Function	Channel	RX Frequency N/W	RX Tone/NAC	TX Frequency N/W	TX Tone/NAC	Mode
AIR TO GROUND	4	169.2000N	NONE	169.2000N	NONE	A
COMMAND	8	159.2700N	156.7	151.1000N	123.0	A
TACTICAL	9	159.2850N	NONE	159.2850N	156.7	A
AIR TO GROUND	14	166.6750N	NONE	166.6750N	NONE	A
AIR TO GROUND	15	169.1500N	NONE	169.1500N	NONE	A
AIR GUARD	16	168.6250N	NONE	168.6250N	110.9	A
9. Prepared By (Resource Unit Leader)			Approved By (Planning Section Chief)		Date	Time
SHAUN STEWART			DUANE DURGEE		05/25/2017	1203

Division/Group Assignment List (ICS 204 WF)

1. Incident Name:			3.			
WEST MIMS			IV		Y	
2. Operational Period: DAY SHIFT 0730-1930						
Date/Time From: 05/26/2017 0730 FRI		Date/Time To: 05/26/2017 1930 FRI				
4. Operations Personnel						
PLANNING OPERATIONS CHIEF		TRENT INGRAM PHIL DANIELS (T)		OPERATIONS CHIEF		RICK DOLAN FRED BOEHM
BRANCH DIRECTOR		STEVE MILLER		DIVISION/GROUP SUPERVISOR		RANDY GREGORY SEAN BASSO (T)
SAFETY		LARRY CONNELL		AIR TACTICAL GROUP SUPERVISOR		MARK NUNEZ, KEN MCLAUGHLIN
6. Control Operations/Work Assignments:						
Purpose						
<ul style="list-style-type: none"> • Keep fire within established fire containment lines. 						
End State						
<ul style="list-style-type: none"> • Fire is contained by adequate control line to reduce threat to escape; minimizing damage to private timberlands, private lands, and other resource values at risk. 						
7. Special Instructions:						
<p>Ensure LCES is in place before operations begin and stay hydrated. Drive defensively and with lights on at all times. Identify escape routes. Bridge near DP 9 restricted to pickups - No engines. Bridge on swamp perimeter road just east of first Branch has steep drop offs - 1 lane travel - watch for barricades.</p> <p>Use caution when working around logging operations.</p> <p>For IA protocol see page 7</p> <p>Medical Emergency Channel: Command ETA for Ambulance to Scene: Air: 20 – 30 mins Ground: 10 - 15 mins Paved roads only. IWI – IC or approved person will use Channel 16 (Air Guard) for contact with air ambulance Air Ambulance landing zone to be determined by IWI – IC Utilize engines to provide dust abatement, as needed, prior to air ambulance landing</p>						
8. Division/Group Communication Summary						
Function	Channel	RX Frequency N/W	RX Tone/NAC	TX Frequency N/W	TX Tone/NAC	Mode
AIR TO GROUND	4	169.2000N	NONE	169.2000N	NONE	A
COMMAND	8	159.2700N	156.7	151.1000N	123.0	A
TACTICAL	9	159.2850N	NONE	159.2850N	156.7	A
AIR TO GROUND	14	166.6750N	NONE	166.6750N	NONE	A
AIR TO GROUND	15	169.1500N	NONE	169.1500N	NONE	A
AIR GUARD	16	168.6250N	NONE	168.6250N	110.9	A
9. Prepared By (Resource Unit Leader)			Approved By (Planning Section Chief)		Date	Time
SHAUN STEWART			DUANE DURGEE		05/25/2017	1203

Division/Group Assignment List (ICS 204 WF)

1. Incident Name:			3.			
WEST MIMS			Branch:		Division/Group:	
2. Operational Period: DAY SHIFT 0730-1930			IV		Z	
Date/Time From: 05/26/2017 0730 FRI		Date/Time To: 05/26/2017 1930 FRI				
4. Operations Personnel						
PLANNING OPERATIONS CHIEF		TRENT INGRAM PHIL DAVIS (T)		OPERATIONS CHIEF		
BRANCH DIRECTOR		STEVE MILLER		DIVISION/GROUP SUPERVISOR		
SAFETY		LARRY CONNELL		AIR TACTICAL GROUP SUPERVISOR		
				RICK DOLAN FRED BOEHM		
				JASON LONGFELLOW		
				MARK NUNEZ, KEN MCLAUGHLIN		
5. Resources Assigned this Period						
Strike Team / Task Force / Resource Designator		LWD	Leader	Number Persons	Drop Off PT./Time	Pick Up PT./Time
TFLD O-653		05/31	RYAN RAWLINSON	1	EAST CAMP/0730	EAST CAMP/1930
ENG6 - OLF - E-692 E-482		06/06	JODI STONE	4	EAST CAMP/0730	EAST CAMP/1930
ENG6 - OH-OHS E-62 E-761		05/28	JEFFREY G TUCKER	6	EAST CAMP/0730	EAST CAMP/1930
ENG6 - AR-OUF - PCS - E-692 E-737		05/29	MATTHEW MICHAEL KAMPF	3	EAST CAMP/0730	EAST CAMP/1930
ENG6 IN 5671 E-727		05/27	MIKE GRISMER	2	EAST CAMP/0730	EAST CAMP/1930
WTT2 - VIN# 009542 E-409		05/26	ANTHONY PALVICK	1	EAST CAMP/0730	EAST CAMP/1930
WTT2 - FARRELL TIMBER - VIN# 557261 E-410		05/26	BENJAMIN JOHNS	1	EAST CAMP/0730	EAST CAMP/1930
WTS2 - BLACK RANGE E-642		05/29	BRANDON SHEPPERD	1	EAST CAMP/0730	EAST CAMP/1930
STEN O-658		05/29	JAMES T ALLISON	1	EAST CAMP/0730	EAST CAMP/1930
ENG6 - 361 E-775		05/29	DAVID T MARBERT	3	EAST CAMP/0730	EAST CAMP/1930
ENG6 - NMN2S - E 2-2 E-767		05/29	MAYLON BERT BROWN	2	EAST CAMP/0730	EAST CAMP/1930
WTT2 - VIN# 9250 E-574		06/02	TONY TIPTON	1	EAST CAMP/0730	EAST CAMP/1930
STEQ O-602		05/28	STEVE TEIGEN	1	EAST CAMP/0730	EAST CAMP/1930
EXCA T3 - VIN# GXHFE E-622		05/25	BUCK TODDENBERRY	1	EAST CAMP/0730	EAST CAMP/1930
DOZ3 - VIN# 302873 E-623		05/25	KELLY PITTMAN	1	EAST CAMP/0730	EAST CAMP/1930
8. Division/Group Communication Summary						
Function	Channel	RX Frequency N/W	RX Tone/NAC	TX Frequency N/W	TX Tone/NAC	Mode
AIR TO GROUND	4	169.2000N	NONE	169.2000N	NONE	A
COMMAND	8	159.2700N	156.7	151.1000N	123.0	A
TACTICAL	10	168.3500N	NONE	168.3500N	NONE	A
AIR TO GROUND	14	166.6750N	NONE	166.6750N	NONE	A
AIR TO GROUND	15	169.1500N	NONE	169.1500N	NONE	A
AIR GUARD	16	168.6250N	NONE	168.6250N	110.9	A
9. Prepared By (Resource Unit Leader)			Approved By (Planning Section Chief)		Date	Time
SHAUN STEWART			DUANE DURGEE		05/25/2017	1203

Division/Group Assignment List (ICS 204 WF)

1. Incident Name:			3.			
WEST MIMS			IV		Z	
2. Operational Period: DAY SHIFT 0730-1930						
Date/Time From: 05/26/2017 0730 FRI		Date/Time To: 05/26/2017 1930 FRI				
4. Operations Personnel						
PLANNING OPERATIONS CHIEF		TRENT INGRAM PHIL DAVIS (T)		OPERATIONS CHIEF		
				RICK DOLAN FRED BOEHM		
BRANCH DIRECTOR		STEVE MILLER		DIVISION/GROUP SUPERVISOR		
				JASON LONGFELLOW		
SAFETY		LARRY CONNELL		AIR TACTICAL GROUP SUPERVISOR		
				MARK NUNEZ, KEN MCLAUGHLIN		
5. Resources Assigned this Period						
Strike Team / Task Force / Resource Designator		LWD	Leader	Number Persons	Drop Off PT./Time	Pick Up PT./Time
STEQ O-736		06/06	JEREMY CALLICUTT	1	EAST CAMP/0730	EAST CAMP/1930
TPL3 NC-NCS - 3X77 E-568		06/06	JACK FRANKLIN	2	EAST CAMP/0730	EAST CAMP/1930
TPL3 NC-NCS - 3X65 E-569		06/06	MARK ALLEN	2	EAST CAMP/0730	EAST CAMP/1930
EMPF E-314 602-571-2505		04/30	JOHN HECK	1	EAST CAMP/0730	EAST CAMP/1930
SOF2 O-494 505-470-2012		05/29	DARROLL ABEYTA	1	EAST CAMP/0730	EAST CAMP/1930
6. Control Operations/Work Assignments:						
Task						
<ul style="list-style-type: none"> • Respond to any new starts within the division. • Patrol and mop up fuels appropriate to fuel type and anticipated weather and fire behavior. • Rehabilitate contingency line. 						
8. Division/Group Communication Summary						
Function	Channel	RX Frequency N/W	RX Tone/NAC	TX Frequency N/W	TX Tone/NAC	Mode
AIR TO GROUND	4	169.2000N	NONE	169.2000N	NONE	A
COMMAND	8	159.2700N	156.7	151.1000N	123.0	A
TACTICAL	10	168.3500N	NONE	168.3500N	NONE	A
AIR TO GROUND	14	166.6750N	NONE	166.6750N	NONE	A
AIR TO GROUND	15	169.1500N	NONE	169.1500N	NONE	A
AIR GUARD	16	168.6250N	NONE	168.6250N	110.9	A
9. Prepared By (Resource Unit Leader)			Approved By (Planning Section Chief)		Date	Time
SHAUN STEWART			DUANE DURGEE		05/25/2017	1203

Division/Group Assignment List (ICS 204 WF)

1. Incident Name:			3.			
WEST MIMS			IV		Z	
2. Operational Period: DAY SHIFT 0730-1930						
Date/Time From: 05/26/2017 0730 FRI		Date/Time To: 05/26/2017 1930 FRI				
4. Operations Personnel						
PLANNING OPERATIONS CHIEF		TRENT INGRAM PHIL DAVIS (T)		OPERATIONS CHIEF		RICK DOLAN FRED BOEHM
BRANCH DIRECTOR		STEVE MILLER		DIVISION/GROUP SUPERVISOR		JASON LONGFELLOW
SAFETY		LARRY CONNELL		AIR TACTICAL GROUP SUPERVISOR		MARK NUNEZ, KEN MCLAUGHLIN
6. Control Operations/Work Assignments:						
Purpose						
<ul style="list-style-type: none"> • Keep fire within established fire containment lines. 						
End State						
<ul style="list-style-type: none"> • Fire is contained by adequate control line to reduce threat to escape; minimizing damage to private timberlands, private lands, and other resource values at risk. 						
7. Special Instructions:						
Use caution when working around logging operations.						
Medical Emergency Channel: Command ETA for Ambulance to Scene: Air: 20 – 30 mins Ground: 10 - 15 mins Paved roads only. IWI – IC or approved person will use Channel 16 (Air Guard) for contact with air ambulance Air Ambulance landing zone to be determined by IWI – IC Utilize engines to provide dust abatement, as needed, prior to air ambulance landing						
For IA protocol see page 7						
2 - TPL Okie - O/H Donnie Harris DIVS 1 - 1050 KG - with operator GFC 1 - Appalachia 750 (Lease) with operator STEQ with 3-T2 Tractor Plow STEQ (Weaver) with 4-T3 Tractor Plow						
8. Division/Group Communication Summary						
Function	Channel	RX Frequency N/W	RX Tone/NAC	TX Frequency N/W	TX Tone/NAC	Mode
AIR TO GROUND	4	169.2000N	NONE	169.2000N	NONE	A
COMMAND	8	159.2700N	156.7	151.1000N	123.0	A
TACTICAL	10	168.3500N	NONE	168.3500N	NONE	A
AIR TO GROUND	14	166.6750N	NONE	166.6750N	NONE	A
AIR TO GROUND	15	169.1500N	NONE	169.1500N	NONE	A
AIR GUARD	16	168.6250N	NONE	168.6250N	110.9	A
9. Prepared By (Resource Unit Leader)			Approved By (Planning Section Chief)		Date	Time
SHAUN STEWART			DUANE DURGEE		05/25/2017	1203

AIR OPERATIONS SUMMARY (ICS220)

Prepared by: John Bragg

Prepared Date: 5/25/2017

Prepared Time: 17:00

1. INCIDENT NAME: West Mims	2. OPS PERIOD DATE: 5/26/17	START TIME: 0900	END TIME: 1900	SUNRISE: 0627	SUNSET TIME: 2023 (Folkston)
3. REMARKS Safety Notes: Hazards (SEE AND AVOID GENERAL AVIATION TRAFFIC AND AERIAL HAZARDS) -Maintain clear communications; confirm that drop location is clear; ground personnel state: "Clear to Drop" -Incident Aircraft conduct flight following with Pogo Helibase when ATGS is not up. -Aerial Ignition Group: Helicopter 1FW with PLDO; FIRB, Jon King. -CEASE ALL FIRE OPERATIONS AT SUNSET -ALL AIRCRAFT SQUAWK 1255 ORDERING/FLIGHT REQUESTS -Request Helicopter water drops through Air Attack -Request Tankers/Retardant through Air Attack -Requests for Reconnaissance missions must go through Operations for pre-approval E-MAIL AIRCRAFT COSTS DAILY AT END OF SHIFT TO: al_d2011@yahoo.com			4. READY ALERT AIRCRAFT: N-132BH N-351FW		5. TFR: (A-160) 7/1205; Surface to 3500' MSL; See NOTAM for full description. Frequency 120.8500 Expires 6/06/17 @ 2100hrs.

6. PERSONNEL	NAME	PHONE #	7. FREQUENCIES	AM	FM	8. FIXED-WING- Type/ Make-Model/ N#/ Base
AOBD	John Bragg Air Ops Desk	423-483-2798 912-637-5133	A/A - Fixed Wing (A-17) A/A - Rotor / TFR (A-37) A/G (Request) (A-111) A/G 66 (Primary) (A-5) A/G 72 (Secondary) (A-16)	120.3500 120.8500	 169.2000 166.6750 169.1500	AIR ATTACK : ATGS – Mark Nunez / AC690 / N690RA / LCQ 805-975-5227 ATGS – Ken McLaughlin / Kodiak / N420Q / LCQ 813-997-0317
ASGS	Al Driesbach	805-703-0649				LEAD – ASM – Bravo xx As assigned
HEB2 - Pogo HEB2(T) - Pogo HEB1 - Lake City	Marc 'Boomer' Rudkin David Aldrich Brad Nelson	307-287-0440 520-490-8638 559-349-6793	Deck/TOLC (Pogo) Deck (Lake City)		168.0500 163.100	TANKERS – As available (T-01) BAE146 / N473NA / LCQ (Off Sundays) (T-02) BAE146 / N474NA / LCQ (Off Mondays) (T-164) RJ-85A / N374AC / LCQ (Off Thursdays) (T-911) DC-10 / N17085 / CHA (Off Sat. & Sun.)
	Pogo Helibase	912-496-4415				
	Lake City Helibase	561-512-6333	Air Guard		168.625 (110.9)	

9. HELICOPTER Remarks Box Legend: C=Cargo P=Passengers B=Bucket SN=Snorkel R=Rappel H=Hoist SH=Short Haul ME=Medical Evacuation/Extraction Exu=Exclusive Use

FAA N#	T Y	MAKE/ MODEL	BASE	START	READY to FLY	REMARKS	FAA N#	T Y	MAKE/ MODEL	BASE	START	READY to FLY	REMARKS
132BH	3	AS350 B3	Pogo (3GE1)	0800	0830	P, B Exu	13FH	1	UH-60A	Lake City (LCQ)	0800	0830	B Exu
351FW	3	AS350 B2	Pogo (3GE1)	0800	0830	P, B Exu							
471CH	1	CH-47D	Lake City (LCQ)	0800	0830	SN Exu	612CK (702)	1	SH-3H / S-61	Lake City (LCQ)	0800	0830	SN *On Loan
611CK	1	SH-3H / S-61	Lake City (LCQ)	0800	0830	SN Exu	137BH	1	S70A-27	Lake City (LCQ)	0800	0830	B *On Loan
699RH	1	K-1200	Lake City (LCQ)	0800	0830	B Exu	472CH	1	CH-47D	Lake City (LCQ)	0800	0830	SN *On Loan

INCIDENT RADIO COMMUNICATIONS PLAN (ICS 205)

1. Incident Name:			2. Date/Time Prepared:			3. Operational Period: DAY SHIFT 0730-1930				
WEST MIMS			Date: 05/25/2017 Time: 1733			Date/Time From: 05/26/2017 0730 FRI			Date/Time To: 05/26/2017 1930 FRI	
4. Basic Radio Channel Use:										
Zone Group	Ch #	Function	Channel Name/Trunked Radio System Talkgroup	Assignment	RX Freq	RX Tone/NAC	TX Freq	TX Tone/NAC	Mode (A,D, or M)	Remarks
1 WEST	1	COMMAND	WEST OKEE REP		167.1250N	156.7	163.1500N	156.7	M	STEPHEN FOSTER STATE PARK
1 WEST	2	COMMAND	S. FOSTER	DIV D	159.1200N	NONE	151.3700N	100.0	A	WEST ROAD MAINTENANCE FL FFS CONTINGENCY
1 EAST	3	COMMAND	CORNELIA		159.1200N	NONE	151.3700N	82.5	A	
1 ALL DIVISIONS	4	AIR TO GROUND	A/G REQUEST	ALL DIVISIONS	169.2000N	NONE	169.2000N	NONE	A	
1	5	COMMAND	GFC EDDY	GA FORESTRY	159.4650N	NONE	151.1450N	123.0	A	GA FORESTRY ONLY
1	6	TACTICAL	GFC TAC 1	WEST ROAD MAINT	159.3900N	NONE	159.3900N	156.7	A	FL FFS CONTINGENCY
1	7	TACTICAL	V FIRE 26		154.3025N	NONE	154.3025N	156.7	A	
1	8	TACTICAL	OSCEOLA PROJECT		163.7125N	NONE	163.7125N	NONE	A	
1	9	TACTICAL	SE COMPACT		159.2850N	NONE	159.2850N	156.7	A	
1	10	TACTICAL	REFUGE TAC 1		168.3500N	NONE	168.3500N	NONE	A	
1	11	TACTICAL	REFUGE TAC 2		163.1000N	NONE	163.1000N	NONE	A	
1	12	TACTICAL	FFS 199		159.4425N	NONE	159.4425N	NONE	A	
1 WEST	13	TACTICAL	FFS 200	DIV D	159.4125N	NONE	159.4125N	NONE	A	
1 ALL DIVISIONS	14	AIR TO GROUND	AIR TO GRD 66	A/G PRIMARY	166.6750N	NONE	166.6750N	NONE	A	AIR TO GROUND PRIMARY
1 ALL DIVISIONS	15	AIR TO GROUND	AIR TO GRD 72	A/G SECONDARY	169.1500N	NONE	169.1500N	NONE	A	AIR / GROUND SECONDARY
1 ALL DIVISIONS	16	AIR GUARD	AIR GUARD	ALL DIVISIONS	168.6250N	NONE	168.6250N	110.9	A	EMERGENCY AIRCRAFT COMMUNICATIONS
5. Special Instructions:										
6. Prepared By (Communications Unit Leader)				Name: PAUL NOA, COML (T)				Signature:		
ICS 205				IAP Page				Date/Time: 05/25/2017 1733		

INCIDENT RADIO COMMUNICATIONS PLAN (ICS 205)

1. Incident Name:	2. Date/Time Prepared:	3. Operational Period: DAY SHIFT 0730-1930	
WEST MIMS	Date: 05/25/2017 Time: 1717	Date/Time From: 05/26/2017 0730 FRI	Date/Time To: 05/26/2017 1930 FRI

4. Basic Radio Channel Use:

Zone Group	Ch #	Function	Channel Name/Trunked Radio System Talkgroup	Assignment	RX Freq	RX Tone/NAC	TX Freq	TX Tone/NAC	Mode (A,D, or M)	Remarks
2	1	TACTICAL	V FIRE 21	INITIAL ATTACK	154.2800N	NONE	154.2800N		A	INITIAL ATTACK W/ OSCEOLA NF
2 WEST	2	COMMAND	S. FOSTER		159.1200N	NONE	151.3700N	100.0	A	
2 EAST	3	COMMAND	CORNELIA	DIV M,N,O	159.1200N	NONE	151.3700N	82.5	A	STAGING, INITIAL ATTACK
2 ALL DIVISIONS	4	AIR TO GROUND	A/G REQUEST	ALL DIVISIONS	169.2000N	NONE	169.2000N	NONE	A	BY REQUEST ONLY
2	5	COMMAND	GFC EDDY	GA FORESTRY	159.4650N	NONE	151.1450N	123.0	A	GA FORESTRY ONLY
2 EAST	6	COMMAND	GA BEND	UNASSIGNED	159.2700N	156.7	151.1000N	156.7	A	
2 NORTH	7	COMMAND	FARGO RPT	DIV F	159.2700N	156.7	151.1000N	100.0	A	
2 SOUTH	8	COMMAND	BAKER RPT	DIV A, B, C, Y, Z	159.2700N	156.7	151.1000N	123.0	A	
2	9	TACTICAL	COMPACT	DIV C, M, Y	159.2850N	NONE	159.2850N	156.7	A	
2	10	TACTICAL	REFUGE TAC 1	DIV N, DIV Z	168.3500N	NONE	168.3500N	NONE	A	STAGING
2	11	TACTICAL	OSCEOLA PROJECT	DIV O	163.7125N	NONE	163.7125N	NONE	A	
2	12	TACTICAL	FFS 199	INITIAL ATTACK	159.4425N	NONE	159.4425N	NONE	A	DIV A
2	13	TACTICAL	FFS 200	DIV B, DIV F	159.4125N	NONE	159.4125N	NONE	A	
2 ALL DIVISIONS	14	AIR TO GROUND	AIR TO GRD 66	A/G PRIMARY	166.6750N	NONE	166.6750N	NONE	A	AIR / GROUND PRIMARY
2 ALL DIVISIONS	15	AIR TO GROUND	AIR TO GRD 72	A/G SECONDARY	169.1500N	NONE	169.1500N	NONE	A	AIR / GROUND SECONDARY
2 ALL DIVISIONS	16	AIR GUARD	AIR GUARD	ALL DIVISIONS	168.6250N	NONE	168.6250N	110.9	A	EMERGENCY AIRCRAFT COMMUNICATIONS

5. Special Instructions:

WEST MIMS DAY PLAN

6. Prepared By (Communications Unit Leader)	Name: PAUL NOA, COML (T)	Signature:
ICS 205	IAP Page	Date/Time: 05/25/2017 1717

PHONE LIST - WEST MIMS FIRE

Position	Name	Phone Number	Position	Name	Phone Number
UNIFIED COMMAND			Finance	General	912-637-5109
NIMO IC	Mike Quesinberry	540-230-1262	NIMO Fin Chief	Carla Schamber	202-631-2254
Southern States IC	Keith Mousel	352-442-2891	Fin Chief	Betty Palmiotto	850-408-6564
Liason Officer	Daniel Stanley	850-661-1674	Dep Fin Chief	Dawn Croch	352-206-5634
Liason Officer	Mark Allen Dozier	478-251-4015	Comp/Claims	Brett Steffen	229-561-4378
Liason Officer	Paul Stevens	252-216-6316	Procurment	Tommy Price	863-661-4019
PUBLIC INFORMATION			Time	Marci Glover	850-373-8254
Information Desk					
NIMO Public Information	Judith Downing	530-908-5128	Telephone lines at ICP		
Public Information	Annaleasa Winter	904-705-3931	Information/PIO		912-637-5132
Refuge Public Info	Susie Heisey	912-286-3110	Information		912-637-5108
AGENCY REPRESENTATIVES			Air Ops		912-637-5133
Refuge FMO	Reese Kerbow	912-276-0167	Ordering		912-637-5107
Refuge AFMO	Reggie Forcine	912-614-4041	Ordering		912-637-5136
Refuge Manager	Mike Lusk	912-390-2193	Ordering Fax		912-637-5104
DNR Agency Liaison	SGT. Patrick Dupree	404-694-5596	Supply		912-637-5138
Ware Co EMA	Bill Parham	229-425-4549	Ground Support		912-637-5105
Clinch Co EMA	Will Joyce	912-520-8581	Finance		912-637-5109
Lanier Co EMA	Randy Patten	229-482-5070	Finance Fax		912-637-5110
Charlton Co EMA	Bruce Young	912-390-2022	Operations		912-637-5112
Charlton Co Sheriff's Office	Inv. Clay Burnsel	912-276-2628	Plans FAX		912-637-5115
Georgia EMA	Kristen Higgs	912-387-5490	Plans / Checkin		912-637-5137
NC-Forest Service	Robbie Perry	910-995-2572	Demob		912-637-5113
Billy Estep	EMS Dir/Nassau Coun	904-813-3476	Communications		912-637-5116
Baker Co EMA	Beck Parker	904-955-6454	Telephone lines at Eastside Camp		
Columbia Co S.O.	Shayne Morgan	386-693-2248	Operations		912-496-2278
Clinch CO Fire Chief	Danny Strickland	912-487-6493	Supply		912-496-3116
PLANNING			Communications		912-496-2293
NIMO PSC	Darrel Schwilling	404-805-3159	Medical		912-496-2289
PSC ICP	Duane Durgee	352-278-0446	LAND OWNERS AND OTHER CONTACTS		
PSC Eastside Camp	Joe Bishop	352-516-9767	Steve Davis	Am Forest Mgmt	912-614-1828
PSC ICP (T)	Jason Braunstein	434-249-9915	Allen C. Cross	Rayonier US Forest	904-796-7929
Fire Behavior Analyst	Bradley Smith	470-366-6313	Dave Gather	Okie Electric	912-390-9755
Fire Behavior Analyst(t)	Andrew Taylor	541-219-1205	Chad Edwards	N Fork Southern RR	540-797-9918
IMET	Scott Kennedy	252-269-9497	Bryan Robbins	CSX RR	912-387-3910
THSP-ARA	Sean Luchs	240-499-6654	Steve Magnolia	FD Coordinator	904-537-5853
READ	Rocky Chesser	912-276-3232	Terri Jenkins	FWS FD/VFD Contact	912-313-4225
FWS READ	Howard McClough	912-276-0552	Ned Neenan	Legacy Forestry	352-317-0738
RESL	Shawn Stewart	352-428-7453	Ken Zaydel	Social Circle FD	404-205-2738
RESL (t)	Jeff Turner	865-684-0093	Royce Proctor	OKE Electric Coop	912-282-6873
SITL	Scott Crosby	352-275-4332		Okefenokee NWR	912-496-7366
SITL	Stuart Coombs	470-366-6309	Adam McCullough	NWR IA Duty Off	912-496-4177
SITL	Stuart Coombs	936-827-4233	SFSP	Bryan Grey	912-637-5274
GISS	Clint Roberts	601-408-4226	GOAL	Jim Barrett	229-356-1993
GISS	Domonic Marcanio	850-380-1656	SOPL	Mark Hale	406-861-4876
Training Specialist	David Hunt	863-221-6146	LTAN (t)	Wesley Hall	575-973-0726
					Ver 26May17

PHONE LIST WEST MIMS FIRE

Position	Name	Phone Number	Position	Name	Phone Number
OPERATIONS	Land Line	912-637-5112	SAFETY		
NIMO Ops	Kyle Smith	540-855-0233	NIMO Safety Officer	Gene Madden	404-805-7970
Lead Ops	Rick Dolan	352-353-5101	Safety Officer	Larry Grubbs	850-228-7755
West Field Lead Ops	Buck Kline	912-678-2694	Safety Officer	Larry Connell	352-303-3921
East Field Lead Ops	Fred Boehm	954-347-8071	Safety Officer (t)	Clay Stephens	702-575-0392
Planning Ops	Trent Ingram	229-726-0285	LOGISTICS		
Planning Ops (t)	Phil Daniels	720-315-4240	NIMO Logistics Chief	Sally Browning	404-805-5063
Structure	Aaron Guy	252-312-4369	Logistics Chief East Camp	Jim Peters	352-942-7218
Branch I	Ron Garcia	559-392-1045	Logistics Section Chief (t)	David McVay	850-625-5142
Division B	Ron Calhoun	478-290-9755	Facilities Unit Leader	Dennis Evans	478-957-9709
Division C	Chris Roberts	912-213-3138	Supply Unit Leader	Travis Shidal	
Division D	Walter Bowers	850-625-6630	East Camp Grd Support	Douglas Crocker	352-235-2352
IA Group	Greg Buckalew	252-475-8012	Ground Spt Unit Ldr	Charles Weathers (nights)	
IA Group (t)	Arturo Gasdik	707-834-8205	Ground Spt Unit Ldr	Mike Stigler	386-837-2289
Road Maint Group	Candice Kutrosky	719-651-0669	Ground Spt Unit Ldr	Glen Simmons	386-855-0379
			East Camp Grd Support	Mike Nelson	484-880-7494
Branch III	Marc Crain	503-307-9023	Ordering Manager	Mark McClellan	478-733-2606
Division M	David Smith	850-686-2970	Food Unit Leader	Steve Marshall	352-464-2721
Division N	Karen Scholl	909-553-7731	Security Manager	Greg Blanks	912-346-7367
Division N (t)	Chris Rankin	307-359-1997	Medical Unit Leader	Steve Russo	917-923-3980
Division O	Shawn Alexander	678-897-9137	East Medical Unit Leader	Brad Burns	470-366-6318
Division O(t)	Michael Gue	305-338-6069	West Medical Unit Leader	Travis McGowen	470-532-8809
IA Group	Greg Buckalew		Communications Unit	24 Hour	912-637-5116
STAM Eastside Camp	Chris Rudd	541-660-0634	Communications Unit Ldr	Charles Radcliff	386-330-4162
North Ambulance/Oken EMS		470-532-8797	Communications Unit Ldr (t)	Paul Noa	850-276-5428
Branch IV	Steve Miller	386-937-0554	INCM	Mike Shipley	678-357-9814
			East Camp Communications		470-366-6306
Division A(t)	Jeff Bostwick	575-694-0280	PLANNING		
Division Y	Randy Gregory	850-519-3330	FOBS Lead	Lew Becker	541-815-2909
Division Z	Jason Longfellow	386-212-9871	FOBS	Brad Schuette	530-351-5306
Division Z(t)			FOBS	Reed Heckly	509-690-1242
Division A/Y/Z Swing			FOBS	Evan Haugan	406-788-9983
Structure Group Swing			FOBS	Brian Boatman	209-559-8184
Refuge Advisor	Reggie Forcine	912-614-4041	FOBS	Jason Kanmann	775-815-8050
Florida Contingency	Keith Osteen		FOBS	Happy Hoppe	530-921-4431
FWS Contingency	Rocky Chesser	912-276-3232	GISS	Brendan Mullholland	352-255-9094
FFS Contingency	John Raulerson	386-292-5652	ITSS	Randy Fountain	470-366-6310
FFS Contingency	Andy Lamborn	383-365-4441	ITSS	Dean Groe	470-366-6311
STAM Bethea	Adam Dummer	831-238-0991			
AIR OPERATIONS					
AOBD	John Bragg	423-483-2798			
ATGS	Ken McLaughlin	813-997-0317			
ATGS	Mark Nunez	805-975-5227			
ASGS	Al Driesback	805-703-0649			
HEB2-Pogo	Marc "Boomer" Rudkin	307-287-0440			
HEB1 - Lake City	Brad Nelson	559-349-6793			
Pogo Helibase (Hardline)		912-496-4415			
Lake City Helibase (Hardline)		561-512-6333			
		850-276-5428			
Ver 26May17					

HEALTH AND SAFETY MESSAGE

SAFETY starts with *YOU*

Every person must have a briefing prior to going on line

INCIDENT: West Mims Fire

DATE: 05/26/2017 0730-1930

HAZARDS AND RISKS NEED TO BE IDENTIFIED FOR EACH ASSIGNMENT

Fireline: The fire is not out. Personnel need to know their Escape Routes and where their Safety Zones are at all times. Good black burned areas may not always be available to use for safety zones.

Common Denominators of Fire Behavior on Tragedy Fires: In some cases, tragedies occur in the mop-up stage. Maintain your situational awareness. Focus on your assignment.

Communications: With less people covering more ground, the need to effectively communicate locations on the fire is important. Know where your folks are at all times.

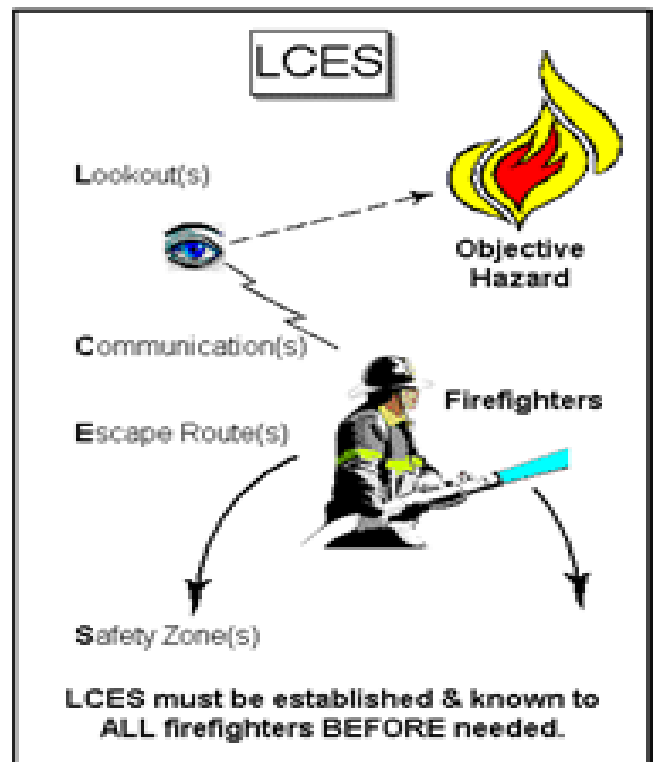
Slips, Trips, & Falls: Take the best routes. Go Slow, Watch out for stump holes.

Dehydration: Water is best – drink a little on frequent intervals, rather than a lot infrequently. Drink 5+ quarts of water / day under current weather conditions.



Increased technology doesn't increase situational awareness.

www.chaimcartoons.com



MEDICAL PLAN (ICS 206 WF)

1. Incident/Project Name			2. Operational Period					
West Mims Fire			Date/Time 5/26/17 0730 - 1930					
3. Ambulance Services								
Name	Complete Address		Phone		Advanced Life Support (ALS)			
					Yes No			
Clinch County EMS	1050 Valdosta Hwy Homerville Ga		229-569-9280		YES			
Golden Isle EMS	210 West Park Ave. Valdosta Ga		229-300-0619		YES			
Okefenokee EMS	611 Riverside Ave. Waycross Ga		912-288-5703		YES			
4. Air Ambulance Services								
Name	Phone		Type of Aircraft & Capability					
Air Methods	888-763-1010		AS 350 with night vision capabilities					
Air Evac	888-269-6006		206 L1 + with night vision capabilities					
Trauma	800-223-4878		Bell 407 & EC153 both with night vision capabilities					
5. Hospitals								
Name Complete Address	GPS Datum – WGS 84 Coordinate Standard Degrees Decimal Minutes DD° MM.MMM' N - Lat DD° MM.MMM' W - Long		Travel Time Air Gnd		Phone	Helipad Yes No		Level of Care Facility
	Lat:	Long:						
Memorial Satilla Health 1900 Teveau St. Waycross GA 31501	N 31' 13.452	W 82' 20.875	15 mins	45 mins	912-283-3030	<input checked="" type="checkbox"/>	<input type="checkbox"/>	Level III
Clinch Memorial 1050 Valdosta Hwy Homerville Ga 31634	N 31' 01.975	W 82' 45.850	20 mins	30 mins	912-487-5211	<input checked="" type="checkbox"/>	<input type="checkbox"/>	Level IV
Ed Frazier Hospital N. 3 rd Street MacClenny Fl 32036	N 30' 28.482	W 82' 11.896	15 mins	45 mins	904-259-3151	<input checked="" type="checkbox"/>	<input type="checkbox"/>	Level IV
Shands Jacksonville 655 West 8 th Street Jacksonville Fl 32209	N 30' 20.890	W 81' 39.862	45 mins	90 mins	904-224-0411	<input checked="" type="checkbox"/>	<input type="checkbox"/>	Level I Trauma Center
UF Shands Burn Center 1600 SW Archer Rd. Gainesville Fl 32610	N 29' 38.648	W 82' 21.189	45 mins	105 mins	352-265-8932	<input checked="" type="checkbox"/>	<input type="checkbox"/>	Burn Center
IWI IC Responsibilities:								
<ul style="list-style-type: none"> -Take charge of the scene – inform the Division Supervisor and Communications that you are the IWI IC and establish radio communications -Assign or begin patient assessment (9 Line) and first aid. -Determine patient transportation through consultation with line medical personnel and Medical Unit Leader. -Order transportation resources through Communications as early as possible. -Notify Communications as resources arrive and any patient status changes. -Names of injured or deceased individuals will not be transmitted on the radio. -Initiate documentation for future investigation; if a line safety officer is available, assign them to lead documentation. -Conduct an After Action Review to determine successes, areas to improve and lessons learned 								

MEDICAL PLAN (ICS 206 WF)

6. Division Branch Group	
DAY MEDIC	
Division A - Martin Carrillo-EMPF	619-933-5546-Channel-8 COMMAND
Division B - Penny McDonagh-EMPF	470-366-6301-Channel-8-COMMAND
Division C - Colin Stenhouse EMPF	470-366-6308-Channel-8-COMMAND
Division D - Rodney Schmidt EMPF	470-366-6317-Channel-2-COMMAND
Division F - Lionel Van Gorp - EMPF	470-5328799-Channel-7-COMMAND
Division M - Stephen Wolfstich- EMPF	520-508-9807-Channel-3-COMMAND
Division N - Dean Carpenter w/UTV- EMPF	229-561-4224-Channel-3-COMMAND
Division O Kyle Port - EMPF	602-410-6788-Channel-3-COMMAND
Division Y – Alyse Guiterriiz - EMPF	602-999-8011-Channel -8-COMMAND
Division Z – John Heck - EMPF	602-571-2505-Channel -8-COMMAND
Medical Station WEST	
MEDL office – Jill Hempelman- EMPF	623-986-1587
Medical Station EAST	
MEDL Station - Mike Fincham- EMPF	530-925-1267
Branch I	
Clinch County EMS Ambulance -ALS-(DAY/SWING)	470-532-8806
Branch III	
Golden Isle Ambulance -ALS-(DAY/SWING)	912-602-9224
Branch IV	
Okefenokee EMS Ambulance-ALS- (DAY)	470-532-8797

7. Prepared By (Medical Unit Leader)	8. Date/Time	9. Reviewed By (Safety Officer)	10. Date/Time
Stephen Russo MEDL (917) 923 3980 West Medical Travis McGowen MEDL (T) 470-532-8809 East Medical Brad Burns MEDL (T) 470-366-6318	5/25/17	Larry Grubbs SOF1 850-228-7755	5/25/2017

Fire Information needs your photos to tell the story of the West Mims Fire.

Your photos tell the story best!

If you have an iPhone, there will be an information officer in attendance at each briefing that can collect your photos via AirDrop.

It takes second and will help us IMMENSELY!



AirDrop

If you do not have an iPhone, please send us your photos via email to:

OkeFirePIO@gmail.com

WEST MIMS FIRE RESTAURANT SERVICE
Friday, May 26, 2017
Breakfast \$11.00 Lunch \$12.00 Dinner \$23.00

Valdosta:

- Waffle House (S193) – 1819 W. Hill Dr., Valdosta, GA 31601 (229) 834-4907
- Mama Junes (S503) – 3286 Inner Perimeter Road, Valdosta, GA 31602 (229) 292-4491 (Hours: 1000-2130 Mon.-Sat., 1030-2000 Sun.)
- Cracker Barrel – 1195 St. Augustine Rd., Valdosta, GA (229) 244-5258 (6 a.m. - 10 p.m.)
- Sonny's BBQ -1701 Norman Dr., Valdosta, GA (229)241-8090 (Mon.-Thur. 11:00 a.m. - 9:30 p.m.) (Fri.-Sun. 11:00 a.m.-10.00 p.m.)
- Chick-Fil-A – 1100 N St. Augustine Rd., Valdosta, GA (229)247-2625 (Mon.-Sat. 6:00 a.m. - 10:00 p.m.) Closed on Sundays.

Fargo:

- Suwannee River Outfitters (S117) - P.O. Box 94 Fargo, Ga 31631 Store# (912) 637-5114 Bonnie Griffis (Owner) Cell# (229)460-6465 (6 a.m. – 8 p.m. Mon.-Sat., 6 a.m.- 3 p.m. Sun)
- Suwannee River Café (S118) - 190 Day Ave Fargo, GA 31631 Store# (912) 637-5307 Lorene Odom (Owner) (6 a.m. – 8 p.m. Mon.-Sat., closed Sun)

Lake City:

- Waffle House (S940) – 3639 W. US Hwy. 90 Lake City, FL 32055 Store# (385) 755-9066, Marilyn (Manager) (386) 344-2365
- Waffle House (S976) – 2963 W. US Hwy. 90 Lake City, FL 32055 Store# (386) 752-7742
- Huddle House (S1333) – Store# (386) 466-1144
- Sonny's BBQ – 3177 W. Hwy. 90, Lake City, FL 32055 (386) 752-1117
- Texas Roadhouse – 3039 W. Hwy. 90, Lake City, FL 32055 (386) 758-0074. (Sun.-Thur. 11:00 a.m.-10:00 pm)(Fri.-Sat. 11:00 a.m.-11:00 pm)

Kingsland:

- Waffle House (S951) – 1201 East Kind Avenue, Kingsland, GA 31548 Store # (912) 729-5690 Allen Newcomb (Manager) (770) 330-4446

Waycross:

- Huddle House (S977) - 1010 Memorial Drive Waycross, GA 31501 Store# (912) 490-4353
- Hog-n-Bones – 1000 Memorial Drive, Waycross, GA 31501 (912) 285-3657 (Mon. –Sat. 6:00 a.m.-9:00 p.m.) Closed Sundays.

Homerville:

- Jerry J's (S716) – 89 E. Dame Avenue, Homerville, Ga 31634 Store# (912) 487-2232 Richard Crosby (Owner) (912) 286-6720
- Carters Fried Chicken (S741) – 277 Lakeview Drive Homerville, GA 31634 Store# (312) 487-2700 Lena Fitzgerald (912) 487-8402 Jeff Brown (912) 487-8004

Folkston:

- Okefenokee Adventures (S593) – 4159 Suwannee Canal Rd., Folkston, GA 31537 Store# (912) 496-7156 (temporarily closed)
- Okefenokee Restaurant (S596) – 1507 3rd Street, Folkston, Ga 31537 Store# (912) 496-3263 (Mon.-Sat. 7:00 a.m.-9:00 p.m.) Closed Sundays.
- Quick Chick (S595) – 107 2nd Street, Folkston, GA 31537 Store# (912) 496-7044 (Mon.-Sat. 10:00 a.m.-8:30 p.m.) Closed Sundays.

Macclenny, Fl:

- Chicken Coop 457 W. Macclenny Ave.
- Woody's 1482 S. 6th St.

WEST MIMS DEMOBE

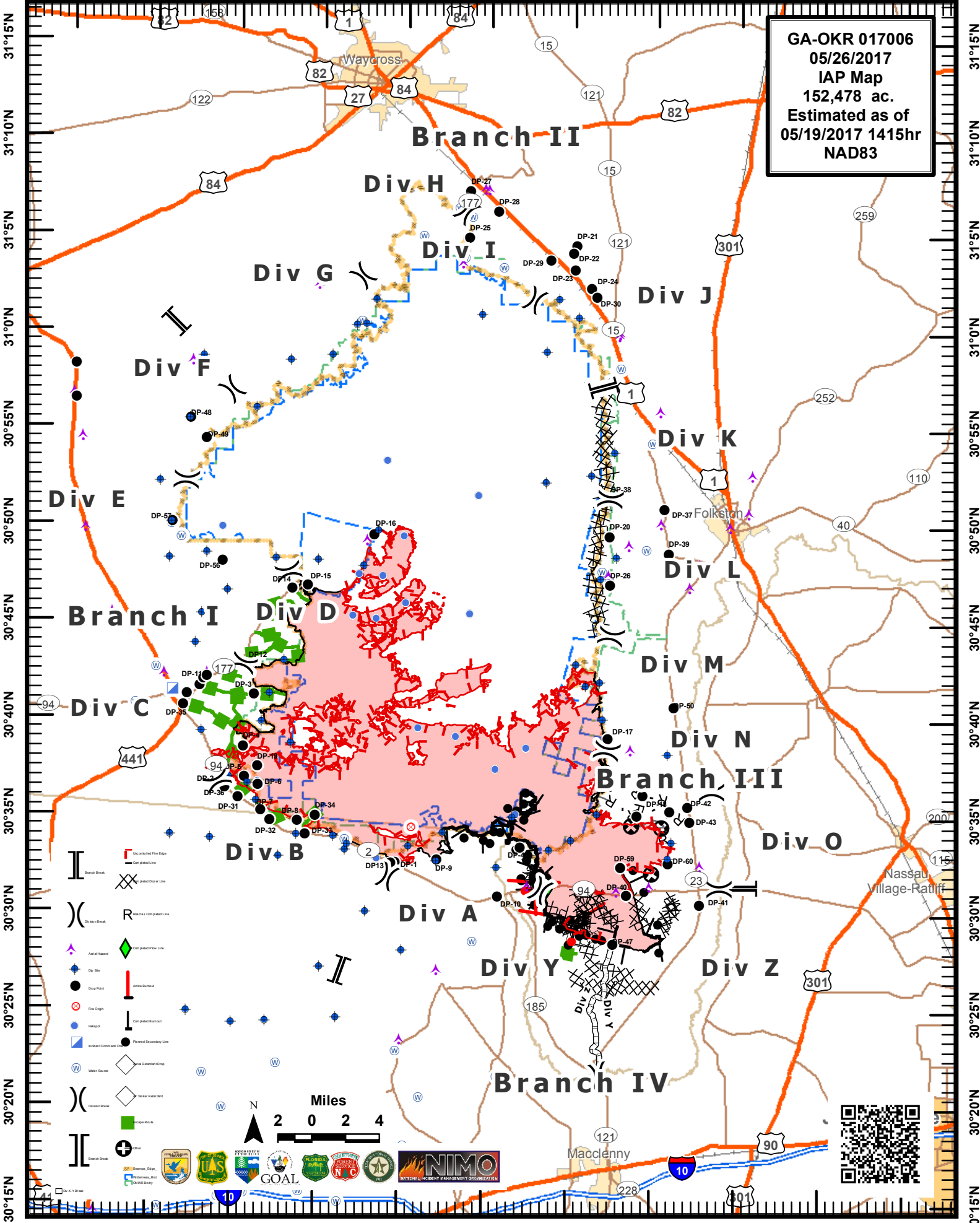
Friday, May 26, 2017

<u>Type</u>	<u>Request #</u>	<u>Name</u>
DOZ2	E-504	HASELL
DOZ2	E-505	HASELL
DOZ2	E-528	VIN #271777
ENG3	E-422	CA-SHF
ENG3	E-423	CA-SHF
ENG6	E-257	Attack One
ENG6	E-259	Smithville
ENG6	E-263	Scholl Fire
ENG6	E-286	Management Services
ENG6	E-412	#0661
ENG6	E-541	Bush Fire
ENG6	E-605	NM N4S
ENG6	E-606	NM N4S
ENG6	E-611	NM N6S
ENG6	E-651	GFC4202480
ENG6	E-770	Fountain
ENG6	E-772	Stonewall
ENG6	E-796	Glenwood
ENG6	E-844	Twin Falls - E2693
ENG7	E-671	GFC4201850
ENG7	E-672	GFC4202146
TPL2	E-833	Pinderland
TPL3	E-465	Vildlands Fire Svcs
TPL3	E-667	GFC2623
TPL3	E-670	GFC1208
TPL4	E-668	GFC2672
WTS2	E-408	VIN #26865
STEQ	O-498	Hoggard
STEQ	O-512	Campbell
DIVS	O-515	McFarland
TPOP	O-551	Duggan
TPOP	O-553	Lewis
TPOP	O-554	Steedley
TPOP	O-555	Johnson
STEQ	O-558	Harris
STEQ	O-613	Gallagher
TFLD	O-530	Jones

Saturday, May 27, 2017

<u>Type</u>	<u>Request #</u>	<u>Name</u>
DOZ3	E-514	Welborn Aqua
ENG6	E-59	GFC4202065
ENG6	E-60	Chattooga 86
ENG6	E-61	Murray 86
ENG6	E-604	NMSNF
ENG6	E-608	Lane Enterprises
ENG6	E-609	Lane Enterprises
ENG6	E-654	Bankhead
ENG6	E-655	Lee
ENG6	E-610	AZ-COF
ENG6	E-613	AZ-COF
ENG6	E-612	NM-CIF
DIVS	O-516	Garcia
DIVS	O-527	Griffin
ENGB	O-566	Douglas
ENOP	O-567	Merz
STEQ	O-563	Gore
PSC2	O-455	Braunstein

GA-OKR 017006
05/26/2017
IAP Map
152,478 ac.
Estimated as of
05/19/2017 1415hr
NAD83



This Page Intentionally left blank.

MEDICAL PLAN (ICS 206 WF)

Medical Incident Report

FOR ALL MEDICAL EMERGENCIES: IDENTIFY ON SCENE INCIDENT COMMANDER BY NAME AND POSITION AND ANNOUNCE "MEDICAL EMERGENCY" TO INITIATE RESPONSE FROM IMT COMMUNICATIONS/DISPATCH.

Use items one through nine to communicate situation to communications/dispatch.

1. CONTACT COMMUNICATIONS/DISPATCH

Ex: "Communications, Div. Alpha. Stand-by for Priority Medical Incident Report." (If life threatening request designated frequency be cleared for emergency traffic.)

2. INCIDENT STATUS: Provide incident summary and command structure.

Nature of Injury/Illness		<i>Describe the injury (Ex: Broken leg with bleeding)</i>
Incident Name		<i>Geographic Name + "Medical" (Ex: Trout Meadow Medical)</i>
Incident Commander		<i>Name of IC</i>
Patient Care		<i>Name of Care Provider (Ex: EMT Smith)</i>

3. INITIAL PATIENT ASSESSMENT: Complete this section for each patient. This is only a brief, initial assessment. Provide additional patient info after completing this 9 Line Report.

Number of Patients:	Male / Female	Age:	Weight:
Conscious? <input type="checkbox"/> YES <input type="checkbox"/> NO = MEDEVAC!			
Breathing? <input type="checkbox"/> YES <input type="checkbox"/> NO = MEDEVAC!			
Mechanism of Injury: <i>What caused the injury?</i>			
Lat/Long (Datum WGS84) <i>Ex: N 40° 42.45' x W 123° 03.24'</i>			

4. SEVERITY OF EMERGENCY, TRANSPORT PRIORITY

SEVERITY	TRANSPORT PRIORITY
<input type="checkbox"/> URGENT-RED Life threatening injury or illness. <i>Ex: Unconscious, difficulty breathing, bleeding severely, 2° – 3° burns more than 4 palm sizes, heat stroke, disoriented.</i>	Ambulance or MEDEVAC helicopter. Evacuation need is IMMEDIATE.
<input type="checkbox"/> PRIORITY-YELLOW Serious injury or illness. <i>Ex: Significant trauma, not able to walk, 2° – 3° burns not more than 1-2 palm sizes.</i>	Ambulance or consider air transport if at remote location. Evacuation may be DELAYED.
<input type="checkbox"/> ROUTINE-GREEN Not a life threatening injury or illness. <i>Ex: Sprains, strains, minor heat-related illness.</i>	Non-Emergency. Evacuation considered Routine of Convenience.

5. TRANSPORT PLAN:

Air Transport: (Agency Aircraft Preferred)

<input type="checkbox"/> Helispot	<input type="checkbox"/> Short-haul/Hoist	<input type="checkbox"/> Life Flight	<input type="checkbox"/> Other
Ground Transport:			
<input type="checkbox"/> Self-Extract	<input type="checkbox"/> Carry-Out	<input type="checkbox"/> Ambulance	<input type="checkbox"/> Other

6. ADDITIONAL RESOURCE/EQUIPMENT NEEDS:

<input type="checkbox"/> Paramedic/EMT(s)	<input type="checkbox"/> Crew(s)	<input type="checkbox"/> SKED/Backboard/C-Collar
<input type="checkbox"/> Burn Sheet(s)	<input type="checkbox"/> Oxygen	<input type="checkbox"/> Trauma Bag
<input type="checkbox"/> Medication(s)	<input type="checkbox"/> IV/Fluid(s)	<input type="checkbox"/> Cardiac Monitor/AED
<input type="checkbox"/> Other (i.e. splints, rope rescue, wheeled litter)		

7. COMMUNICATIONS:

Function	Channel Name/Number	Receive (Rx)	Tone/NAC *	Transmit (Tx)	Tone/NAC *
<i>Ex: Command</i>	<i>Forest Rpt, Ch. 2</i>	<i>168.3250</i>	<i>110.9</i>	<i>171.4325</i>	<i>110.9</i>
COMMAND					
AIR-TO-GRND					
TACTICAL					

*(NAC for digital radio system)

8. EVACUATION LOCATION:

Lat/Long (Datum WGS84) <i>EX: N 40 42.45' x W 123 03.24'</i>	
Patient's ETA to Evacuation Location:	
Helispot/Extraction Size and Hazards:	

9. CONTINGENCY:

Considerations: <i>If primary options fail, what actions can be implemented in conjunction with primary evacuation method? Be thinking ahead...</i>	REMEMBER: Confirm ETA's of resources ordered Act according to your level of training Be Alert. Keep Calm. Think Clearly. Act Decisively.
------------------------------------------------------------------------------------------------------------------------------------------------------------	----------------------------------------------------------------------------------------------------------------------------------------------------------------