

INCIDENT ACTION PLAN

WEST MIMS FIRE

OPERATIONAL PERIOD

MAY 27, 2017

0730-1930

SOUTHERN STATES TYPE-1 IMT

QR for IAP



GA-OKR-017006

FWS FFF2000000KYJ70

USFS PRKYJ717_1502 (P)

NPS PFFSKJ7017.00.1

QR for Maps



Schedule

0730 Pre-Op Briefing
0800 Morning Briefing
1100 C & G
1600 Pre Planning Meeting
1700 Planning Meeting



INCIDENT OBJECTIVES (ICS 202)

1. Incident Name:	2. Operational Period: DAY SHIFT 0730-1930	
WEST MIMS	Date/Time From: 05/27/2017 0730 SAT	Date/Time To: 05/27/2017 1930 SAT
3. Objective(s):		
<ul style="list-style-type: none"> • Provide for the safety and security of incident personnel and public in all incident operations through sound risk assessment and hazard mitigations. • Maintain a positive working relationship with all adjacent landowners, cooperators State and Federal partners. Inform, involve and communicate incident planning and operations with all partners. • Confine all fires that are within the Okefenokee National Wildlife Refuge, inside the Refuge and/or inside the swamp edge break if possible. Aggressively suppress all fire outside the swamp edge boundary. • In cooperation with local timberland owners, use full suppression strategies and tactics to minimize damage to private timberlands and improvements and to prevent fires outside the Refuge from entering the Refuge. • Assist in management and suppression of additional fires (new starts or breakouts) in the vicinity as approved by Agency Administrators and Unified Incident Commanders. • Protect all cultural and archeological sites and structures within the refuge. • Manage the fires cost-effectively consistent with the values at risk. • Implement structure protection as necessary for at-risk facilities and communities. • Coordinate suppression actions with assigned Refuge Resource Advisors. • Conduct all operations in a harassment-free environment. There will be a no tolerance atmosphere for harassment, alcohol, or illegal drug use. Everyone will be treated with dignity and respect. • Identify and initiate suppression repair on all Divisions. 		
4. Operational Period Command Emphasis:		
Branch IV Keep fire East of the North Prong of St Mary's River; West of Nassau county Florida; and North of Baker county Florida Branch III Keep fire North of Rayonier Road 10, West of St Mary's River, and South of Stokes Road Keep fire within the Okefenokee Refuge Swamp Edge Break Boundary. Respond to initial attack fires on new starts within: *South of Suwannee Canal *Within the Okefenokee jurisdictional boundaries *Within state properties inside Perimeter Road		
General Situational Awareness:		
Utilize confine, contain, and point source protection strategies and tactics that commit operations personnel only where and when they can be successful, under conditions where important values at risk are protected with the least exposure.		
5. Site Safety Plan Required? Yes <input type="checkbox"/> No <input checked="" type="checkbox"/>		
Approved Site Safety Plan(s) Located at:		
6. Incident Action Plan (the items checked below are included in this Incident Action Plan):		
<input checked="" type="checkbox"/> ICS 202 <input checked="" type="checkbox"/> ICS 203 <input checked="" type="checkbox"/> ICS 204 <input checked="" type="checkbox"/> ICS 205 <input type="checkbox"/> ICS 205A <input checked="" type="checkbox"/> ICS 206	<input type="checkbox"/> ICS 207 <input checked="" type="checkbox"/> ICS 208 <input checked="" type="checkbox"/> ICS 220 <input checked="" type="checkbox"/> Map/Chart <input checked="" type="checkbox"/> Weather Forecast/Tides/Currents	Other Attachments: <input checked="" type="checkbox"/> <u>PIO MESSAGE</u> <input checked="" type="checkbox"/> <u>TENTATIVE DEMOB</u> <input checked="" type="checkbox"/> <u>SAFETY MESSAGE</u> <input checked="" type="checkbox"/> <u>RESTAURANT LIST</u>
7. Prepared by: JOE BISHOP	Position/Title: PSC2 (T)	Signature:
8. Approved by Incident Commander:		Signature:
ICS 202	IAP Page	Date/Time: 05/26/2017 2030

ORGANIZATION ASSIGNMENT LIST (ICS 203)

1. Incident Name:		2. Operational Period: DAY SHIFT 0730-1930	
WEST MIMS		Date/Time From: 05/27/2017 0730 SAT	Date/Time To: 05/27/2017 1930 SAT
3. Incident Commander(s) and Command Staff:		INCIDENT METEOROLOGIST	SCOTT KENNEDY
IC/UC	SAM LENEAVE, KEITH MOUSEL (T), MIKE QUESINBERRY	FIRE BEHAVIOR ANALYST; AIR RESOURCE ADVISOR	BRAD SMITH, MIKE WARD (T) , ANDREW TAYLOR (T) SEAN LUCHS, THSP-ARA
SAFETY OFFICER	LARRY CONNELL, LARRY GRUBBS CLAY STEPHENS (T)	6. Logistics Section:	
INFORMATION OFFICER	ANNALEASA WINTER TODD SCHROEDER; JUDITH DOWNING	CHIEF	EAST - JIM PETERS WEST - DAVID MCVAY (T), SALLY BROWNING
LIAISON OFFICER	ALAN DOZIER DANIEL STANLEY	SUPPLY UNIT	WEST-LAUREN SMITH EAST-TRAVIS SHIDAL
TECHNICAL SPECIALIST	GENE MADDEN	FACILITIES UNIT	WEST-DENNIS EVANS EAST-CURTIS ASAY
4. Agency/Organization Representative(s):		GROUND SUPPORT UNIT	WEST-GLENN SIMMONS EAST-DOUGLAS CROCKER
Agency/Organization	Name	COMMUNICATIONS UNIT	CHUCK RADCLIFF PAUL NOA (T)
GFC PROTECTION	FRANK SORRELLS	MEDICAL UNIT	WEST-STEPHEN RUSSO, TRAVIS MCGOWEN EAST-BRAD BURNS, MATTHEW LARICOS (T)
OKE REF MGR/ASSIST	MICHAEL LUSK; SARA CLARDY	COMT	WEST-KELLY TOWE; ROGER MENARD EAST-STEVEN LANDON
OKE REF FMO	REESE KERBOW	FOOD UNIT	WEST-STEPHEN MARSHALL EAST-BRANTLEY SMITH (T)
GOAL	JIM BARRETT	SECURITY UNIT	GREG BLANKS
FL FFS	JOHN RAULERSON	ORDM	MARK MCCLELLAN, MICHAEL STIGLER (T) TAMARA KLINDT
GEMA	DIANE ADAMS	RCDM	LAUREN SMITH, JAKE CLEVINGER
NORFOLK SOUTHERN	CHAD EDWARDS	EQPM	KIRBY HENNINSEN; JASON MCHAN
CLINCH CO EMA	WILL JOYCE; RANDY PATTEN	RADO	
CHARLTON CO EMA	BRUCE YOUNG	BCMG (DAY)	WEST-BOB EMRICK EAST-JAWANA STEPHENS (T)
WARE CO EMA	BILLY PARHAM	JOHN BETHEA STAGING AREA - BCMG (NIGHT)	BEN REICK
NCFS	ROBBIE PERRY	JOHN BETHEA STAGING AREA - EQMG	JOHN STRONG
NASSAU COUNTY EMS	BILLY E STEP	JOHN BETHEA STAGING AREA CAMP CREW BOSS	JUWANNA SAMPSON
BAKER CO SO	BECK PARKER		
5. Planning Section:			
CHIEF	DUANE DURGEE JOE BISHOP (T), DARREL SCHWILLING		
RESOURCES UNIT	SHAUN STEWART TOM WINSHIP; JEFF TURNER (T)		
STATUS CHECKIN	CARLA ROBERTS; JESSICA VALDEZ		
SITUATION UNIT	SCOTT CROSBY STUART COOMBS		
DEMOBILIZATION UNIT	BOBBY CAHAL		
ITSS	DEAN GROE RANDALL FOUNTAIN		
TRAINING SPECIALIST	DAVID HUNT		
HUMAN RESOURCE SPECIALIST	LARRY SANDOVAL		
GIS SPECIALIST	DOMINIC MARCANIO, CLINT ROBERTS BRENDAN MULHOLLAND (T)		
9. Prepared By:	Name: JEFF TURNER	Position/Title: RESL (T)	Signature:
ICS 203	IAP Page	Date/Time: 05/26/2017 0931	

ORGANIZATION ASSIGNMENT LIST (ICS 203)

1. Incident Name:		2. Operational Period: DAY SHIFT 0730-1930	
WEST MIMS		Date/Time From: 05/27/2017 0730	Date/Time To: 05/27/2017 1930 SAT
		SAT	SAT
7. Operations Section:		7b. Air Operations Branch:	
OPS SECTION CHIEF	RICK DOLAN; WEST-BUCK KLINE EAST-FRED BOEHM, BRYCE THOMAS (T), KYLE SMITH		AIR OPS BRANCH DIRECTOR JOHN BRAGG
PLANNING OPS	TRENT INGRAM PHIL DANIELS (T)		AIR SUPPORT GROUP SUPERVISOR AL DRIESBACH
Branch	I		AIR TACTICAL GROUP SUPERVISOR MARK NUNEZ, KEN MCLAUGHLIN
BRANCH DIRECTOR	LANCE DELGADO		HEB1 POGO MARC RUDKIN
DIVISION/GROUP	B	RON RUCKER, JERRY VAN DYNE KEITH FIELDS (T)	
DIVISION/GROUP	C	CHRIS ROBERTS	8. Finance/Administration Section:
DIVISION/GROUP	D	WALTER BOWERS HEATHER GRIFFIN (T)	CHIEF BETTY PALMIOTTO
DIVISION/GROUP	F	JASON FORTHOFFER	DEPUTY DAWN CROUCH (T)
DIVISION/GROUP	IA WEST	RON CALHOUN	PROCUREMENT UNIT TOMMY PRICE BONNIE GRIFFIS (T)
Branch	III		CONTRACTING OFFICER
BRANCH DIRECTOR	MARC CRAIN; CHRIS LUNDGREN (T)		EQUIPMENT TIME RECORDER DOUG CHASSEREAU SONYA YARA, RANDY TOTTEN (T)
DIVISION/GROUP	IA EAST	GREGG BUCKALEW ARTURO GASDIK (T)	COST UNIT ROBERT JESSELL VICKI WILSON
DIVISION/GROUP	M/N	KAREN SCHOLL CHRIS RANKIN (T)	TIME UNIT MARC GLOVER
DIVISION/GROUP	O	SHAWN ALEXANDER MICHAEL GUE (T)	PERSONNEL TIME RECORDER MARTHA MILLER, LINDA STARLING BECKY HOPKINS, TRISH KITSMILLER, SARA RANDOLPH (T)
DIVISION/GROUP	STAGING	ADAM DUMMER CHRIS RUDD	COMPENSATION UNIT BRETT STEFFEN
Branch	ROAD MAINTENANCE		
BRANCH DIRECTOR	BOB LITTLE		
DIVISION/GROUP	WEST	DAVID SMITH, CANDICE KUTROSKY JASON LAGO (T)	
DIVISION/GROUP	SOUTH	ANDREW BRANSON	
DIVISION/GROUP	EAST	KRIS CRODDY	
Branch	IV		
BRANCH DIRECTOR	STEVE MILLER		
DIVISION/GROUP	A	TOM TALBOT JEFF BOSTWICK (T)	
DIVISION/GROUP	Y	RANDY GREGORY SEAN BASSO (T)	
DIVISION/GROUP	Z	JASON LONGFELLOW	
9. Prepared By:	Name: JEFF TURNER	Position/Title: RESL (T)	Signature:
ICS 203	IAP Page	Date/Time: 05/26/2017 0931	



To: All Incident Personnel, West Mims Fire 2017

As the Unified Command Incident Commanders, we have a policy of “zero tolerance” of inappropriate behavior during incident operations. Any form of harassment, discriminatory practices, or disrespectful behavior will not be tolerated. Known or reported acts will be dealt with appropriately.

We are particularly concerned about the perception that alcohol has a place in any of the Incident facilities. It is not appropriate to indulge in alcoholic beverages during any fire assignment.

The National Team from the Southern Region has a policy of “NO ALCOHOL” from the time of dispatch until the time of physical release from the Incident. Members of the Team voluntarily comply with this policy; all incident personnel will be expected to do so also.

We endorse, support, and expect an attitude of mutual respect for all Incident personnel and the public we serve. We also, endorse the attitude and work ethic that places “Safety First, every time on every Incident.” We expect nothing less.

<p>/s/ Keith Mousel /s/ Mike Quesinberry Incident Commanders</p>
--



Fire Weather Forecast



FORECAST NO: 50
PREDICTION FOR: Saturday
SHIFT DATE: May 27, 2017
FORECAST ISSUED: 1800 May 26, 2017

NAME OF FIRE: West Mims Fire
UNIT: Okefenokee National Wildlife Refuge
Incident Meteorologist: Scott Kennedy 252-269-9497

DISCUSSION:

High pressure continues across the area today with hot and dry conditions continuing. Temperatures will climb into the middle 90s with only slightly improved RH values around 30-35 percent. Southwest winds may gust up to 15 mph during the afternoon.

SATURDAY:

- WEATHER: Sunny.
 - WIND (20 FT): Southwest 4 to 8 mph with gusts to 15 mph.
 - MAX TEMPERATURES: 92-96
 - LAL: 1
 - MIXING HEIGHT: 5000
- CHANCE RAIN: 0%
 RAINFALL: 0"
- MIN RH: 30-35%
 DISPERSION (MAX): 60
 TRANSPORT WINDS: SW 15 mph

SATURDAY NIGHT:

- WEATHER: Clear.
 - WIND (20 FT): Southwest 2 to 5 mph.
 - MIN TEMPERATURES: 64 to 68
 - LAL: 1
- MAX RH: 90-100%
 CHANCE OF RAIN: 0%
 MAX LVORI: 9
 RAINFALL: 0"

HOURLY WEATHER FORECAST (LST) Saturday 1000 through Sunday 0800

Time	1000	1200	1400	1600	1800	2000	2200	2400	0200	0400	0600	0800
Temp °F	79	89	93	94	90	84	78	74	71	68	66	70
RH %	50	41	33	32	38	53	67	77	87	93	100	97
Wind Dir	SW	SW	SW	SW	SW	SW	SW	SW	SW	W	W	W
Wind Spd mph	5	6	6	7	7	6	5	5	3	3	3	3
Wind Gst mph	-	10	13	15	12	12	-	-	-	-	-	-
Rain Chance%	0	0	0	0	0	0	0	0	0	0	0	0
Weather	-	-	-	-	-	-	-	-	-	-	-	-

SUNDAY:

- WEATHER: Partly cloudy.
 - WIND (20 FT): Southwest 7 to 12 mph with gusts to 20 mph.
 - MAX TEMPERATURES: 92 to 96.
 - LAL: 1
 - MIXING HEIGHT: 4500
- CHANCE RAIN: 0%
 RAINFALL: 0"
- MIN RH: 40-45%
 DISPERSION (MAX): 70
 TRANSPORT WINDS: W 20 mph

Sunrise Saturday: 6:30 am

Sunset Saturday: 8:25 pm

Sunrise Sunday: 6:29 am

RAWS Observations:

Jones Island



Eddy Tower



OKE East



OKE NW



FIRE BEHAVIOR FORECAST

FORECAST NUMBER: #39	TYPE OF FIRE: Wildland
FIRE NAME: West Mims	OPERATIONAL PERIOD: 05/27/2017 Day Operational Period
DATE ISSUED: 05/26/2017	TIME ISSUED: 1800
UNIT: Okefenokee National Wildlife Refuge	Signed: Brad Smith FBAN

FUEL ASSUMPTIONS: Fuel types include timber litter (reburn fuels), brush fuels that represent the organic swamp and bayhead fuels. The high risk fuel is the pine plantation overstory with the palmetto/gallberry brush understory commonly referred to as southern rough. Live canopy fuel moistures in pine and brush are below average and will support active crown fire when critical fire weather and above average fuel dryness is present. Current fuel dryness, as represented by KBDI and ERC G, is currently above normal. KBDI is 564 or 80th percentile. ERC G is 32 or 75th percentile
 Calculated 1 hour fine dead fuel moisture: 5% 10 hour fuel moisture: 9% 100 hour fuel moisture: 17%

WEATHER SUMMARY: High pressure dominates with increasing temperatures
 WIND (20 FT): Southwest. 4-8 mph with gusts to 15
 MAX TEMPERATURES: 92-96 MIN RH: 30-35%
 LAL: 1 CHANCE OF RAIN: 0 AMOUNT: 0" MAX DISPERSION: 60
 MIXING HEIGHT: 5000 TRANSPORT WINDS: SW 15 mph

General observed fire behavior prior to rain: Drought conditions exist across the fire area. Fire will easily transition from surface litter fuels into the Palmetto brush which currently has a high percentage of dead material in the brush canopy. Large dead fuels and organic ground fuels are very dry and continue to be a source of holdover heat. A fire's resistance to control increases when one or more of the fire behavior thresholds are exceeded and fuel dryness is above average. Increased surface fire intensity will increase potential for surface fire to transition to brush canopy fuels.

Critical fire behavior thresholds when fuels are dry:
Temp >90°, RH < 35%, Dispersion index greater than 70

Specific: All Branches: Surface fuels continue to dry after Wednesday's rain. Surface spread is low to moderate and fire intensity is moderate in Palmetto brush. Holdover lightning ignitions from Wednesday could still emerge today. Reburn potential in pine needle cast continues to increase with the current drying trend. Potential ignition sources include slash piles, heavy dead fuels and organic fuels in upland bayheads.

Fuel Type	Rates of Spread	Flame Length	Max Spot Distance	Probability of Ignition	Torching / Crowning Potential / Flame Lengths
20' winds @ 8 and 12mph					
Southern Rough(pine w/palmetto/gallberry)	10-15 ch/hr.	2-4 feet	20 feet	70%	Torching in brush canopy
Timber Litter (pine litter reburn)	1-2 ch/hr.	1-2 feet	0 feet	70%	none
Brush (Swamp)	2-4 ch/hr.	2-4 feet	20 feet	70%	Torching in brush canopy

AIR OPERATIONS: Clear skies under high pressure influence

FIRE BEHAVIOR SAFETY: Crown fire is normally associated with a dominant conifer canopy. Fire that transitions from the surface into brush canopy fuels should also be considered crown fire with the same characteristics of high intensity fire and spotting potential.

Reference: 1 chain = 66 feet, 20 chains = .25 mile, 40 chains = .50 mile, 60 chains = .75 mile, 80 chains = 1 Mile

IA Protocol

- Determine LAT/LONG.
- Notify OSC and/or OPBD.
- OSC/OPBD will notify Unified IC's for approval to assist with ground or aviation resources.

In Georgia:

Southern Response Dispatch (229) 386-3846

If no contact-Buck Kline (912) 678-2694

In Florida-

Lake City (Baker, Columbia, and Hamilton Counties):
(386) 243-6243

Jacksonville (Nassau County): (904) 266-8351

If no contact-Rick Dolan (352) 353-5101

Osceola National Forest- Any starts south of Florida State Highway 2 under USFS jurisdiction are the responsibility of the Osceola NF. Contact Tallahassee Dispatch at 850-523-8600 or Forest Duty Officer Drew Page at 850-523-8600. Tractor plow units should not engage (unless life or property is threatened) before contact with Osceola NF (Chris Lydick at 850-264-3209 or Scott Hussey at 352-215-5722).

For OKR-

Brantley Boatright Dispatch (912) 496-7366 x 230
or (912) 276-0023

Division/Group Assignment List (ICS 204 WF)

1. Incident Name:			3.			
WEST MIMS			Branch:		Division/Group:	
2. Operational Period: DAY SHIFT 0730-1930			I		B	
Date/Time From: 05/27/2017 0730 SAT		Date/Time To: 05/27/2017 1930 SAT				
4. Operations Personnel						
PLANNING OPERATIONS CHIEF		TRENT INGRAM PHIL DANIELS (T)		OPERATIONS CHIEF		RICK DOLAN BUCK KLINE
BRANCH DIRECTOR		LANCE DELGADO		DIVISION/GROUP SUPERVISOR		RON RUCKER, JERRY VAN DYNE KEITH FIELDS (T)
SAFETY		LARRY GRUBBS CLAY STEPHENS (T)		AIR TACTICAL GROUP SUPERVISOR		MARK NUNEZ KEN MCLAUGHLIN
5. Resources Assigned this Period						
Strike Team / Task Force / Resource Designator		LWD	Leader	Number Persons	Drop Off PT./Time	Pick Up PT./Time
STEN O-605		05/29	COURTNEY WENZEL	1	ICP/0730	ICP/1930
ENG6 NM-SNF - JEMEZ RD - 631 E-763		05/29	KARL KEEMAN	6	ICP/0730	ICP/1930
ENG6 AR-OZF - PH - E-641 E-76		05/29	MICHAEL W KOCH	3	ICP/0730	ICP/1930
ENG6 UT-FIF - ENG 612 E-843		06/02	JARAD TEEPLES	8	ICP/0730	ICP/1930
WTS1 WILDLANDS FIRE SERVICE E-132		05/31	DAVID SWEENEY	1	ICP/0730	ICP/1930
FOBS (T) O-695		05/31	BRAD SCHUETTE	1	ICP/0730	ICP/1930
FOBS O-689		05/31	LEW BECKER	1	ICP/0730	ICP/1930
EMPF O-543 470-366-6301		05/27	PENNY MCDONAGH	1	ICP/0730	ICP/1930
SOF2 O-252		05/31	CHRIS CHURCH	1	ICP/0730	ICP/1930
6. Control Operations/Work Assignments:						
8. Division/Group Communication Summary						
Function	Channel	RX Frequency N/W	RX Tone/NAC	TX Frequency N/W	TX Tone/NAC	Mode
AIR TO GROUND	4	169.2000N	NONE	169.2000N	NONE	A
COMMAND	8	159.2700N	156.7	151.1000N	123.0	A
TACTICAL	13	159.4125N	NONE	159.4125N	NONE	A
AIR TO GROUND	14	166.6750N	NONE	166.6750N	NONE	A
AIR TO GROUND	15	169.1500N	NONE	169.1500N	NONE	A
AIR GUARD	16	168.6250N	NONE	168.6250N	110.9	A
9. Prepared By (Resource Unit Leader)			Approved By (Planning Section Chief)		Date	Time
JEFF TURNER, RESL (T)			JOE BISHOP, PSC2 (T)		05/26/2017	1900

Division/Group Assignment List (ICS 204 WF)

1. Incident Name:			3.			
WEST MIMS			I		B	
2. Operational Period: DAY SHIFT 0730-1930						
Date/Time From: 05/27/2017 0730 SAT		Date/Time To: 05/27/2017 1930 SAT				
4. Operations Personnel						
PLANNING OPERATIONS CHIEF		TRENT INGRAM PHIL DANIELS (T)		OPERATIONS CHIEF		RICK DOLAN BUCK KLINE
BRANCH DIRECTOR		LANCE DELGADO		DIVISION/GROUP SUPERVISOR		RON RUCKER, JERRY VAN DYNE KEITH FIELDS (T)
SAFETY		LARRY GRUBBS CLAY STEPHENS (T)		AIR TACTICAL GROUP SUPERVISOR		MARK NUNEZ KEN MCLAUGHLIN
6. Control Operations/Work Assignments:						
Task						
<ul style="list-style-type: none"> • Patrol and mop up fuels appropriate to fuel type and anticipated weather and fire behavior. • Respond to any new starts within the division. 						
Purpose						
<ul style="list-style-type: none"> • Keep fire north of GA 94/FL 2. 						
End State						
<ul style="list-style-type: none"> • Fire is contained by adequate control line to reduce threat to escape; minimizing damage to private timberlands, private lands, and other resource values at risk. 						
7. Special Instructions:						
Ensure LCES is in place before operations begin and stay hydrated. Drive defensively and with lights on at all times. Identify escape routes.						
Use caution when working around logging operations.						
For IA protocol see page 7						
Medical Emergency Channel: Command ETA for Ambulance to Scene: Air: 20 – 30 mins Ground: 10 - 15 mins Paved roads only. IWI – IC or approved person will use Channel 16 (Air Guard) for contact with air ambulance Air Ambulance landing zone to be determined by IWI – IC Utilize engines to provide dust abatement, as needed, prior to air ambulance landing						
8. Division/Group Communication Summary						
Function	Channel	RX Frequency N/W	RX Tone/NAC	TX Frequency N/W	TX Tone/NAC	Mode
AIR TO GROUND	4	169.2000N	NONE	169.2000N	NONE	A
COMMAND	8	159.2700N	156.7	151.1000N	123.0	A
TACTICAL	13	159.4125N	NONE	159.4125N	NONE	A
AIR TO GROUND	14	166.6750N	NONE	166.6750N	NONE	A
AIR TO GROUND	15	169.1500N	NONE	169.1500N	NONE	A
AIR GUARD	16	168.6250N	NONE	168.6250N	110.9	A
9. Prepared By (Resource Unit Leader)			Approved By (Planning Section Chief)		Date	Time
JEFF TURNER, RESL (T)			JOE BISHOP, PSC2 (T)		05/26/2017	1900

Division/Group Assignment List (ICS 204 WF)

1. Incident Name:			3.			
WEST MIMS			Branch:		Division/Group:	
2. Operational Period:			I			
DAY SHIFT 0730-1930			C			
Date/Time From: 05/27/2017 0730 SAT		Date/Time To: 05/27/2017 1930 SAT				
4. Operations Personnel						
PLANNING OPERATIONS CHIEF		TRENT INGRAM PHIL DANIELS (T)		OPERATIONS CHIEF		RICK DOLAN BUCK KLINE
BRANCH DIRECTOR		LANCE DELGADO		DIVISION/GROUP SUPERVISOR		CHRIS ROBERTS
SAFETY		LARRY GRUBBS CLAY STEPHENS (T)		AIR TACTICAL GROUP SUPERVISOR		MARK NUNEZ KEN MCLAUGHLIN
5. Resources Assigned this Period						
Strike Team / Task Force / Resource Designator		LWD	Leader	Number Persons	Drop Off PT./Time	Pick Up PT./Time
HC2IA PATRICK ENVIRONMENTAL C-11		05/29	AUSTIN HERGERT	14	ICP/0730	ICP/1930
TFLD O-597		05/29	CHAD KIDD	1	ICP/0730	ICP/1930
TFLD (T) O-701		05/30	TRAVIS CARSON	1	ICP/0730	ICP/1930
ENG4 NC-NCS - PP-1434 - D3 E-542		06/06	MATT GARNER	2	ICP/0730	ICP/1930
ENG6 WV-MOF 641 E-870		06/02	JARED D STAGGS	3	ICP/0730	ICP/1930
ENG6 AL-ALF SHOAL CREEK 651 E-78		06/06	SCOTT LAYFIELD	3	ICP/0730	ICP/1930
ENG6 - KY-KYS - 110 E-658			UNSTAFFED	2	ICP/0730	ICP/1930
ENG6 - KY-KYS - 111 E-659			UNSTAFFED	2	ICP/0730	ICP/1930
STEQ O-564		05/27	RANDALL MOSLEY	1	ICP/0730	ICP/1930
TPL2 GFC 3230 E-688		05/27	DAVID MASON	1	ICP/0730	ICP/1930
TPL3 GFC 1536 E-689		05/27	WALTER BIRD	1	ICP/0730	ICP/1930
TPL3 GFC 3186 E-687		05/27	WILLIAM K BRADY	1	ICP/0730	ICP/1930
8. Division/Group Communication Summary						
Function	Channel	RX Frequency N/W	RX Tone/NAC	TX Frequency N/W	TX Tone/NAC	Mode
AIR TO GROUND	4	169.2000N	NONE	169.2000N	NONE	A
COMMAND	8	159.2700N	156.7	151.1000N	123.0	A
TACTICAL	9	159.2850N	NONE	159.2850N	156.7	A
AIR TO GROUND	14	166.6750N	NONE	166.6750N	NONE	A
AIR TO GROUND	15	169.1500N	NONE	169.1500N	NONE	A
AIR GUARD	16	168.6250N	NONE	168.6250N	110.9	A
9. Prepared By (Resource Unit Leader)			Approved By (Planning Section Chief)		Date	Time
JEFF TURNER, RESL (T)			JOE BISHOP, PSC2 (T)		05/26/2017	1900

Division/Group Assignment List (ICS 204 WF)

1. Incident Name:			3.			
WEST MIMS			Branch:		Division/Group:	
2. Operational Period: DAY SHIFT 0730-1930			I		C	
Date/Time From: 05/27/2017 0730 SAT		Date/Time To: 05/27/2017 1930 SAT				
4. Operations Personnel						
PLANNING OPERATIONS CHIEF		TRENT INGRAM PHIL DANIELS (T)		OPERATIONS CHIEF		RICK DOLAN BUCK KLINE
BRANCH DIRECTOR		LANCE DELGADO		DIVISION/GROUP SUPERVISOR		CHRIS ROBERTS
SAFETY		LARRY GRUBBS CLAY STEPHENS (T)		AIR TACTICAL GROUP SUPERVISOR		MARK NUNEZ KEN MCLAUGHLIN
5. Resources Assigned this Period						
Strike Team / Task Force / Resource Designator		LWD	Leader	Number Persons	Drop Off PT./Time	Pick Up PT./Time
TFLD O-717		06/01	MYRON WILLIAMS	1	ICP/0730	ICP/1930
TPL4 GFC 3254 E-876		06/01	MICHAEL YOKE JR	1	ICP/0730	ICP/1930
TPL4 GFC 3331 E-877		06/01	DAVID TOMPKINS	1	ICP/0730	ICP/1930
TPL5 GFC 3219 E-878		06/01	PHILLIP B DAVIS	1	ICP/0730	ICP/1930
EMPF E-352.2		06/13	COLIN STENHOUSE	1	ICP/0730	ICP/1930
SOF2 O-252		05/31	CHRIS CHURCH	1	ICP/0730	ICP/1930
6. Control Operations/Work Assignments:						
Task						
<ul style="list-style-type: none"> Patrol and mop up fuels appropriate to fuel type and anticipated weather and fire behavior. Respond to any new starts within the division. Create or improve fireline around logging debris in coordination with logging operators. 						
Purpose						
8. Division/Group Communication Summary						
Function	Channel	RX Frequency N/W	RX Tone/NAC	TX Frequency N/W	TX Tone/NAC	Mode
AIR TO GROUND	4	169.2000N	NONE	169.2000N	NONE	A
COMMAND	8	159.2700N	156.7	151.1000N	123.0	A
TACTICAL	9	159.2850N	NONE	159.2850N	156.7	A
AIR TO GROUND	14	166.6750N	NONE	166.6750N	NONE	A
AIR TO GROUND	15	169.1500N	NONE	169.1500N	NONE	A
AIR GUARD	16	168.6250N	NONE	168.6250N	110.9	A
9. Prepared By (Resource Unit Leader)			Approved By (Planning Section Chief)		Date	Time
JEFF TURNER, RESL (T)			JOE BISHOP, PSC2 (T)		05/26/2017	1900

Division/Group Assignment List (ICS 204 WF)

1. Incident Name:			3.			
WEST MIMS			Branch:		Division/Group:	
2. Operational Period:			I			
DAY SHIFT 0730-1930			C			
Date/Time From: 05/27/2017 0730 SAT		Date/Time To: 05/27/2017 1930 SAT				
4. Operations Personnel						
PLANNING OPERATIONS CHIEF		TRENT INGRAM PHIL DANIELS (T)		OPERATIONS CHIEF		RICK DOLAN BUCK KLINE
BRANCH DIRECTOR		LANCE DELGADO		DIVISION/GROUP SUPERVISOR		CHRIS ROBERTS
SAFETY		LARRY GRUBBS CLAY STEPHENS (T)		AIR TACTICAL GROUP SUPERVISOR		MARK NUNEZ KEN MCLAUGHLIN
6. Control Operations/Work Assignments:						
<ul style="list-style-type: none"> • Keep fire east of swamp edge fire break. <p>End State</p> <ul style="list-style-type: none"> • Fire is contained by adequate control line to reduce threat to escape; minimizing damage to private timberlands, private lands, and other resource values at risk. 						
7. Special Instructions:						
<p>Ensure LCES is in place before operations begin and stay hydrated. Drive defensively and with lights on at all times. Identify escape routes. Logging operations are continuing. Stay clear of cutting areas. Please be mindful of logging operations that will be ongoing. Ensure that all personnel stay clear of felling operations. Pay attention for potential reburn in logging area. Work with Gilyard Logging foreman on any suppression actions within the logging area.</p> <p>Use caution when working around logging operations.</p> <p><u>For IA protocol see page 7</u></p> <p>Additional Resources: Superior Pine Tractor Plow D6; SP-83, SP-85, SP-87 Medical Emergency Channel: Command ETA for Ambulance to Scene: Air: 20 – 30 mins Ground: 10 - 15 mins Paved roads only. IWI – IC or approved person will use Channel 16 (Air Guard) for contact with air ambulance Air Ambulance landing zone to be determined by IWI – IC Utilize engines to provide dust abatement, as needed, prior to air ambulance landing</p>						
8. Division/Group Communication Summary						
Function	Channel	RX Frequency N/W	RX Tone/NAC	TX Frequency N/W	TX Tone/NAC	Mode
AIR TO GROUND	4	169.2000N	NONE	169.2000N	NONE	A
COMMAND	8	159.2700N	156.7	151.1000N	123.0	A
TACTICAL	9	159.2850N	NONE	159.2850N	156.7	A
AIR TO GROUND	14	166.6750N	NONE	166.6750N	NONE	A
AIR TO GROUND	15	169.1500N	NONE	169.1500N	NONE	A
AIR GUARD	16	168.6250N	NONE	168.6250N	110.9	A
9. Prepared By (Resource Unit Leader)			Approved By (Planning Section Chief)		Date	Time
JEFF TURNER, RESL (T)			JOE BISHOP, PSC2 (T)		05/26/2017	1900

Division/Group Assignment List (ICS 204 WF)

1. Incident Name:			3.			
WEST MIMS			Branch:		Division/Group:	
2. Operational Period: DAY SHIFT 0730-1930			I		D	
Date/Time From: 05/27/2017 0730 SAT		Date/Time To: 05/27/2017 1930 SAT				
4. Operations Personnel						
PLANNING OPERATIONS CHIEF		TRENT INGRAM PHIL DANIELS (T)		OPERATIONS CHIEF		
BRANCH DIRECTOR		LANCE DELGADO		DIVISION/GROUP SUPERVISOR		
SAFETY		LARRY GRUBBS CLAY STEPHENS (T)		AIR TACTICAL GROUP SUPERVISOR		
				RICK DOLAN BUCK KLINE		
				WALTER BOWERS HEATHER GRIFFIN (T)		
				MARK NUNEZ, KEN MCLAUGHLIN		
5. Resources Assigned this Period						
Strike Team / Task Force / Resource Designator		LWD	Leader	Number Persons	Drop Off PT./Time	Pick Up PT./Time
TFLD O-596		05/28	ALFRED ALLMAN	1	ICP/0730	ICP/1930
HEQB O-662		05/31	WILLIAM BOJORQUES	1	ICP/0730	ICP/1930
DOZ2 OK-OKS ECU #2178 E-503		06/08	AARON SUMPTER	1	ICP/0730	ICP/1930
ENG6 AR-OUF-PCS #691 E-838		05/30	LARRY SHORES	3	ICP/0730	ICP/1930
ENG6 FL-FNF-641 E-157		05/28	JUSTIN KNOWLES	3	ICP/0730	ICP/1930
ENG6 WY-RSD 1602 E-849		05/31	RICHARD HOWE	3	ICP/0730	ICP/1930
TFLD O-649		05/29	RANDY OKON	1	ICP/0730	ICP/1930
TFLD(T) O-730		06/07	JOEY SILVA	1	ICP/0730	ICP/1930
ENG6 ME-MES 6198 E-871		06/02	DANIEL PERKINS	3	ICP/0730	ICP/1930
ENG6 COLQUITT 86 STEPHEN FOSTER E-118		06/05	CHAD PRITCHETT	1	ICP/0730	ICP/1930
TFLD O-593		05/29	BRYAN ROSENOW	1	ICP/0730	ICP/1930
DOZ3 KY-KYS 311 - 650J E-510		06/09	JERRY BROWN	2	ICP/0730	ICP/1930
DOZ3 KY-KYS 312 - 650J E-511		06/09	CHRIS ADAMS	2	ICP/0730	ICP/1930
PATRICK (SAW) C-11		05/29	JOSHUA CHILDS	5	ICP/0730	ICP/1930
8. Division/Group Communication Summary						
Function	Channel	RX Frequency N/W	RX Tone/NAC	TX Frequency N/W	TX Tone/NAC	Mode
COMMAND	2	159.1200N	NONE	151.3700N	100.0	A
AIR TO GROUND	4	169.2000N	NONE	169.2000N	NONE	A
TACTICAL	13	159.4125N	NONE	159.4125N	NONE	A
AIR TO GROUND	14	166.6750N	NONE	166.6750N	NONE	A
AIR TO GROUND	15	169.1500N	NONE	169.1500N	NONE	A
AIR GUARD	16	168.6250N	NONE	168.6250N	110.9	A
9. Prepared By (Resource Unit Leader)			Approved By (Planning Section Chief)		Date	Time
JEFF TURNER, RESL (T)			JOE BISHOP, PSC2 (T)		05/26/2017	1900

Division/Group Assignment List (ICS 204 WF)

1. Incident Name:			3.			
WEST MIMS			Branch:		Division/Group:	
2. Operational Period: DAY SHIFT 0730-1930			I		D	
Date/Time From: 05/27/2017 0730 SAT		Date/Time To: 05/27/2017 1930 SAT				
4. Operations Personnel						
PLANNING OPERATIONS CHIEF		TRENT INGRAM PHIL DANIELS (T)		OPERATIONS CHIEF		RICK DOLAN BUCK KLINE
BRANCH DIRECTOR		LANCE DELGADO		DIVISION/GROUP SUPERVISOR		WALTER BOWERS HEATHER GRIFFIN (T)
SAFETY		LARRY GRUBBS CLAY STEPHENS (T)		AIR TACTICAL GROUP SUPERVISOR		MARK NUNEZ, KEN MCLAUGHLIN
5. Resources Assigned this Period						
Strike Team / Task Force / Resource Designator		LWD	Leader	Number Persons	Drop Off PT./Time	Pick Up PT./Time
EMPF E-342.2		06/01	ROD SCHMIDT	1	ICP/0730	ICP/1930
SOF2 O-252		05/31	CHRIS CHURCH	1	ICP/0730	ICP/1930
SOF2 O-492		06/10	TIMOTHY OLIVERIUS	1	ICP/0730	ICP/1930
6. Control Operations/Work Assignments:						
Task						
<ul style="list-style-type: none"> Patrol and mop up fuels appropriate to fuel type and anticipated weather and fire behavior. Respond to any new starts within the division. Monitor fire activity and location in the vicinity of Billies Island. 						
Purpose						
<ul style="list-style-type: none"> Keep fire south of the Suwannee Canal. 						
End State						
<ul style="list-style-type: none"> Fire activity north and west of Billy's Island has been detected and appropriate action has been initiated. Fire is contained by adequate control line to reduce threat to escape; minimizing damage to private timberlands, private lands, and other resource values at risk. 						
7. Special Instructions:						
8. Division/Group Communication Summary						
Function	Channel	RX Frequency N/W	RX Tone/NAC	TX Frequency N/W	TX Tone/NAC	Mode
COMMAND	2	159.1200N	NONE	151.3700N	100.0	A
AIR TO GROUND	4	169.2000N	NONE	169.2000N	NONE	A
TACTICAL	13	159.4125N	NONE	159.4125N	NONE	A
AIR TO GROUND	14	166.6750N	NONE	166.6750N	NONE	A
AIR TO GROUND	15	169.1500N	NONE	169.1500N	NONE	A
AIR GUARD	16	168.6250N	NONE	168.6250N	110.9	A
9. Prepared By (Resource Unit Leader)			Approved By (Planning Section Chief)		Date	Time
JEFF TURNER, RESL (T)			JOE BISHOP, PSC2 (T)		05/26/2017	1900

Division/Group Assignment List (ICS 204 WF)

1. Incident Name:			3.			
WEST MIMS			I		D	
2. Operational Period: DAY SHIFT 0730-1930						
Date/Time From: 05/27/2017 0730 SAT		Date/Time To: 05/27/2017 1930 SAT				
4. Operations Personnel						
PLANNING OPERATIONS CHIEF		TRENT INGRAM PHIL DANIELS (T)		OPERATIONS CHIEF		RICK DOLAN BUCK KLINE
BRANCH DIRECTOR		LANCE DELGADO		DIVISION/GROUP SUPERVISOR		WALTER BOWERS HEATHER GRIFFIN (T)
SAFETY		LARRY GRUBBS CLAY STEPHENS (T)		AIR TACTICAL GROUP SUPERVISOR		MARK NUNEZ, KEN MCLAUGHLIN
7. Special Instructions:						
Ensure LCES is in place before operations begin and stay hydrated. Drive defensively and with lights on at all times. Identify escape routes.						
Ensure all firefighters receive a safety briefing from Resource personnel and don PFDs before boarding the vessel.						
All personnel must receive a briefing and don all PPE, including a PFD, prior to boarding a water vessel.						
For IA protocol see page 7						
Medical Emergency Channel: Command						
ETA for Ambulance to Scene:						
Air: 20 – 30 mins						
Ground: 10 - 15 mins Paved roads only.						
IWI – IC or approved person will use Channel 16 (Air Guard) for contact with air ambulance						
Air Ambulance landing zone to be determined by IWI – IC						
Utilize engines to provide dust abatement, as needed, prior to air ambulance landing						
8. Division/Group Communication Summary						
Function	Channel	RX Frequency N/W	RX Tone/NAC	TX Frequency N/W	TX Tone/NAC	Mode
COMMAND	2	159.1200N	NONE	151.3700N	100.0	A
AIR TO GROUND	4	169.2000N	NONE	169.2000N	NONE	A
TACTICAL	13	159.4125N	NONE	159.4125N	NONE	A
AIR TO GROUND	14	166.6750N	NONE	166.6750N	NONE	A
AIR TO GROUND	15	169.1500N	NONE	169.1500N	NONE	A
AIR GUARD	16	168.6250N	NONE	168.6250N	110.9	A
9. Prepared By (Resource Unit Leader)			Approved By (Planning Section Chief)		Date	Time
JEFF TURNER, RESL (T)			JOE BISHOP, PSC2 (T)		05/26/2017	1900

Division/Group Assignment List (ICS 204 WF)

1. Incident Name:			3.			
WEST MIMS			Branch:		Division/Group:	
2. Operational Period: DAY SHIFT 0730-1930			I		F	
Date/Time From: 05/27/2017 0730 SAT		Date/Time To: 05/27/2017 1930 SAT				
4. Operations Personnel						
PLANNING OPERATIONS CHIEF		TRENT INGRAM PHIL DANIELS (T)		OPERATIONS CHIEF		RICK DOLAN FRED BOEHM
BRANCH DIRECTOR		LANCE DELGADO		DIVISION/GROUP SUPERVISOR		JASON FORTHOFFER JEFF COBURN (T)
SAFETY		LARRY GRUBBS CLAY STEPHENS (T)		AIR TACTICAL GROUP SUPERVISOR		MARK NUNEZ KEN MCLAUGHLIN
5. Resources Assigned this Period						
Strike Team / Task Force / Resource Designator		LWD	Leader	Number Persons	Drop Off PT./Time	Pick Up PT./Time
ENG6 BRUSH 143 E-769		05/29	RICARDO RENTERIA	6	ICP/0730	ICP/1930
ENG6 CO-PBS - 603 E-771		05/29	KEVIN EVANS	4	ICP/0730	ICP/1930
HEQB O-642		05/29	HUNTER BELL	1	ICP/0730	ICP/1930
MAST WESTCO E-865		06/05		1	ICP/0730	ICP/1930
MAST MULCHER/MASTICATOR VIN# B0062 E-834		06/05		1	ICP/0730	ICP/1930
MAST ROT RANCH E-74		05/28	MIKE PARRISH	1	ICP/0730	ICP/1930
BHOE ROT RANCH JD 6415 (MOWER) E-73		05/28	DARRELL CLARK	1	ICP/0730	ICP/1930
EMPF O-560		06/02	LIONEL VAN GRUP	1	ICP/0730	ICP/1930
SOF2 O-587		05/29	RON BERTSCH	1	ICP/0730	ICP/1930
6. Control Operations/Work Assignments:						
8. Division/Group Communication Summary						
Function	Channel	RX Frequency N/W	RX Tone/NAC	TX Frequency N/W	TX Tone/NAC	Mode
COMMAND	7	159.2700N	156.7	151.100N	100.0	A
AIR TO GROUND	4	169.2000N	NONE	169.2000N	NONE	A
TACTICAL	13	159.4125N	NONE	159.4125N	NONE	A
AIR TO GROUND	14	166.6750N	NONE	166.6750N	NONE	A
AIR TO GROUND	15	169.1500N	NONE	169.1500N	NONE	A
AIR GUARD	16	168.6250N	NONE	168.6250N	110.9	A
9. Prepared By (Resource Unit Leader)			Approved By (Planning Section Chief)		Date	Time
JEFF TURNER, RESL (T)			JOE BISHOP, PSC2 (T)		05/26/2017	1900

Division/Group Assignment List (ICS 204 WF)

1. Incident Name:			3.			
WEST MIMS			Branch:		Division/Group:	
2. Operational Period: DAY SHIFT 0730-1930			I		F	
Date/Time From: 05/27/2017 0730 SAT		Date/Time To: 05/27/2017 1930 SAT				
4. Operations Personnel						
PLANNING OPERATIONS CHIEF		TRENT INGRAM PHIL DANIELS (T)		OPERATIONS CHIEF		RICK DOLAN FRED BOEHM
BRANCH DIRECTOR		LANCE DELGADO		DIVISION/GROUP SUPERVISOR		JASON FORTHOFFER JEFF COBURN (T)
SAFETY		LARRY GRUBBS CLAY STEPHENS (T)		AIR TACTICAL GROUP SUPERVISOR		MARK NUNEZ KEN MCLAUGHLIN
6. Control Operations/Work Assignments:						
Task						
<ul style="list-style-type: none"> • Assist private landowners and coordinate preparation of timberlands adjacent to the division. • Respond to any new starts within the division. • Monitor fire activity and location within the swamp. • Refresh Swamp Edge Break. 						
Purpose						
<ul style="list-style-type: none"> • Keep fire west of Swamp Edge Break. 						
End State						
<ul style="list-style-type: none"> • Fire activity that threatens Swamp Edge Break has been detected and appropriate action has been initiated. • Fire is contained by adequate control line to reduce threat to escape; minimizing damage to private timberlands, private lands, and other resource values at risk. 						
7. Special Instructions:						
Use caution when working around logging operations.						
For IA protocol see page 8						
Medical Emergency Channel: Command ETA for Ambulance to Scene: Air: 20 – 30 mins Ground: 10 - 15 mins Paved roads only. IWI – IC or approved person will use Channel 16 (Air Guard) for contact with air ambulance Air Ambulance landing zone to be determined by IWI – IC Utilize engines to provide dust abatement, as needed, prior to air ambulance landing						
8. Division/Group Communication Summary						
Function	Channel	RX Frequency N/W	RX Tone/NAC	TX Frequency N/W	TX Tone/NAC	Mode
COMMAND	7	159.2700N	156.7	151.100N	100.0	A
AIR TO GROUND	4	169.2000N	NONE	169.2000N	NONE	A
TACTICAL	13	159.4125N	NONE	159.4125N	NONE	A
AIR TO GROUND	14	166.6750N	NONE	166.6750N	NONE	A
AIR TO GROUND	15	169.1500N	NONE	169.1500N	NONE	A
AIR GUARD	16	168.6250N	NONE	168.6250N	110.9	A
9. Prepared By (Resource Unit Leader)			Approved By (Planning Section Chief)		Date	Time
JEFF TURNER, RESL (T)			JOE BISHOP, PSC2 (T)		05/26/2017	1900

Division/Group Assignment List (ICS 204 WF)

1. Incident Name:			3.			
WEST MIMS			I		Division/Group: INITIAL ATTACK WEST	
2. Operational Period: DAY SHIFT 0730-1930						
Date/Time From: 05/27/2017 0730 SAT		Date/Time To: 05/27/2017 1930 SAT				
4. Operations Personnel						
PLANNING OPERATIONS CHIEF		TRENT INGRAM PHIL DANIELS (T)		OPERATIONS CHIEF		RICK DOLAN BUCK KLINE
BRANCH DIRECTOR		LANCE DELGADO		DIVISION/GROUP SUPERVISOR		RONALD L CALHOUN
SAFETY		LARRY GRUBBS CLAY STEPHENS (T)		AIR TACTICAL GROUP SUPERVISOR		MARK NUNEZ KEN MCLAUGHLIN
5. Resources Assigned this Period						
Strike Team / Task Force / Resource Designator		LWD	Leader	Number Persons	Drop Off PT./Time	Pick Up PT./Time
ENG6 KY-KYS - 310 E-660		06/09	ADAM R MCGUIRE	2	FARGO ICP/0730	FARGO ICP/1930
ENG6 NC-NCF E-691 E-255		05/27	CODY TROUT THOMAS	3	FARGO ICP/0730	FARGO ICP/1930
ENG6 STH ARK 112 E-773		05/29	MELISSA FRIESS	3	FARGO ICP/0730	FARGO ICP/1930
ENG6 REDBIRD E6171 E-447		06/06	RUPERT NOWLIN	2	FARGO ICP/0730	FARGO ICP/1930
STEQ O-565		05/31	AL POTTS	1	FARGO ICP/0730	FARGO ICP/1930
TPL4 GFC 3285 E-824		05/31	TERRY K HEARD	1	FARGO ICP/0730	FARGO ICP/1930
TPL4 GFC 3212 E-825		05/31	BRUCE E FREE	1	FARGO ICP/0730	FARGO ICP/1930
TPL4 GFC 2230 E-826		05/31	CHRISTOPHER SCOTT BRANNEN	1	FARGO ICP/0730	FARGO ICP/1930
STEQ O-762		06/08	HILTON BENNETT	1	FARGO ICP/0730	FARGO ICP/1930
TPL2 GFC 1413 E-981		06/08	SHAWN SPIKES	1	FARGO ICP/0730	FARGO ICP/1930
TPL2 GFC 1414 E-982		06/08	JASON BOHANNON	1	FARGO ICP/0730	FARGO ICP/1930
TPL3 GFC 1547 E-983		06/08	ORION GIBSON	1	FARGO ICP/0730	FARGO ICP/1930
DOZ1 HUDSON 7699 E-788		05/30	CHAD WILEY	2	FARGO ICP/0730	FARGO ICP/1930
8. Division/Group Communication Summary						
Function	Channel	RX Frequency N/W	RX Tone/NAC	TX Frequency N/W	TX Tone/NAC	Mode
COMMAND	7	159.2700N	156.7	151.1000N	100.0	A
COMMAND	8	159.2700N	156.7	151.1000N	123.0	A
TACTICAL	11	163.1000N	NONE	163.1000N	NONE	A
AIR TO GROUND	4	169.2000N	NONE	169.2000N	NONE	A
AIR TO GROUND	14	166.6750N	NONE	166.6750N	NONE	A
AIR TO GROUND	15	169.1500N	NONE	169.1500N	NONE	A
AIR GUARD	16	168.6250N	NONE	168.6250N	110.9	A
9. Prepared By (Resource Unit Leader)			Approved By (Planning Section Chief)		Date	Time
JEFF TURNER, RESL (T)			JOE BISHOP, PSC2 (T)		05/26/2017	1900

Division/Group Assignment List (ICS 204 WF)

1. Incident Name:			3.				
WEST MIMS			I	Branch:		Division/Group:	
2. Operational Period: DAY SHIFT 0730-1930				INITIAL ATTACK WEST			
Date/Time From: 05/27/2017 0730 SAT		Date/Time To: 05/27/2017 1930 SAT					
4. Operations Personnel							
PLANNING OPERATIONS CHIEF		TRENT INGRAM PHIL DANIELS (T)		OPERATIONS CHIEF		RICK DOLAN BUCK KLINE	
BRANCH DIRECTOR		LANCE DELGADO		DIVISION/GROUP SUPERVISOR		RONALD L CALHOUN	
SAFETY		LARRY GRUBBS CLAY STEPHENS (T)		AIR TACTICAL GROUP SUPERVISOR		MARK NUNEZ KEN MCLAUGHLIN	
6. Control Operations/Work Assignments:							
Task							
<ul style="list-style-type: none"> • Respond to any new starts as requested by OKR duty officer. • Coordinate initial attack action with assigned aviation and/or ground assets. 							
Purpose							
<ul style="list-style-type: none"> • Ensure timely response on any initial attack within OKR jurisdictional boundaries and vicinity. 							
End State							
<ul style="list-style-type: none"> • Fire activity has been detected and appropriate action has been initiated. 							
7. Special Instructions:							
<p>Contact Resource Advisors for any cultural or archeological needs, as well as, RCW concerns. Ensure LCES is in place before operations begin and stay hydrated. Drive defensively and with lights on at all times. Communications: Use the tactical channel for the division you are in. Staging on east side at Refuge office.</p> <p>Use caution when working around logging operations.</p> <p>Medical Emergency Channel: Command ETA for Ambulance to Scene: Air: 20 – 30 mins Ground: 10 - 15 mins Paved roads only. IWI – IC or approved person will use Channel 16 (Air Guard) for contact with air ambulance Air Ambulance landing zone to be determined by IWI – IC Utilize engines to provide dust abatement, as needed, prior to air ambulance landing</p> <p>For IA protocol see page 7</p>							
8. Division/Group Communication Summary							
Function	Channel	RX Frequency N/W	RX Tone/NAC	TX Frequency N/W	TX Tone/NAC	Mode	
COMMAND	7	159.2700N	156.7	151.1000N	100.0	A	
COMMAND	8	159.2700N	156.7	151.1000N	123.0	A	
TACTICAL	11	163.1000N	NONE	163.1000N	NONE	A	
AIR TO GROUND	4	169.2000N	NONE	169.2000N	NONE	A	
AIR TO GROUND	14	166.6750N	NONE	166.6750N	NONE	A	
AIR TO GROUND	15	169.1500N	NONE	169.1500N	NONE	A	
AIR GUARD	16	168.6250N	NONE	168.6250N	110.9	A	
9. Prepared By (Resource Unit Leader)			Approved By (Planning Section Chief)			Date	Time
JEFF TURNER, RESL (T)			JOE BISHOP, PSC2 (T)			05/26/2017	1900

Division/Group Assignment List (ICS 204 WF)

1. Incident Name:			3.			
WEST MIMS			Branch:		Division/Group:	
2. Operational Period: DAY SHIFT 0730-1930			III		M/N	
Date/Time From: 05/27/2017 0730 SAT		Date/Time To: 05/27/2017 1930 SAT				
4. Operations Personnel						
PLANNING OPERATIONS CHIEF		TRENT INGRAM PHIL DANIELS (T)		OPERATIONS CHIEF		RICK DOLAN, FRED BOEHM BRYCE THOMAS (T)
BRANCH DIRECTOR		MARC CRAIN CHRIS LUNDGREN (T)		DIVISION/GROUP SUPERVISOR		KAREN SCHOLL CHRIS RANKIN (T)
SAFETY		LARRY CONNELL		AIR TACTICAL GROUP SUPERVISOR		MARK NUNEZ, KEN MCLAUGHLIN
5. Resources Assigned this Period						
Strike Team / Task Force / Resource Designator		LWD	Leader	Number Persons	Drop Off PT./Time	Pick Up PT./Time
TFLD O-385		05/30	MARVIN ROYBAL	1	EAST CAMP/0730	EAST CAMP/1930
TFLD(T) O-670		06/01	MIKE BROD	1	EAST CAMP/0730	EAST CAMP/1930
ENG6 AR-OZF - SYL - E-671 E-283			UNSTAFFED	3	EAST CAMP/0730	EAST CAMP/1930
ENG6 NAX - BRUSH 7-4 E-848		05/31	MAX BORINO	3	EAST CAMP/0730	EAST CAMP/1930
WTS2 WET 'N RED, LLC - 58592 E-365		06/14	ALLEN WEST	2	EAST CAMP/0730	EAST CAMP/1930
HEQB O-601		05/27	JASON FOREMAN	1	EAST CAMP/0730	EAST CAMP/1930
TFLD O-725		06/02	JASON HAYWOOD	1	EAST CAMP/0730	EAST CAMP/1930
TFLD(T) O-643		05/29	JAKE GOEBEL	1	EAST CAMP/0730	EAST CAMP/1930
ENG3 - 335 E-756		05/31	WILLIAM MARCKS		EAST CAMP/0730	EAST CAMP/1930
ENG6 TRINIDAD FIRE 2930 E-774		05/29	MIGUEL ORTIZ	3	EAST CAMP/0730	EAST CAMP/1930
ENG6 WY-MBF - 694 E-776		06/03	JOSH MCGEE	3	EAST CAMP/0730	EAST CAMP/1930
WTT2 AZ-COF 4-74 E-600		05/28	JASON KOLB	2	EAST CAMP/0730	EAST CAMP/1930
EMPF O-753		06/08	WADE ALLEN	1	EAST CAMP/0730	EAST CAMP/1930
EMPF E-316.2		05/30	STEVE WOLFSTICH	1	EAST CAMP/0730	EAST CAMP/1930
8. Division/Group Communication Summary						
Function	Channel	RX Frequency N/W	RX Tone/NAC	TX Frequency N/W	TX Tone/NAC	Mode
COMMAND	3	159.1200N	NONE	151.3700N	82.5	A
AIR TO GROUND	4	169.2000N	NONE	169.2000N	NONE	A
TACTICAL	9	159.2850N	NONE	159.2850N	156.7	A
AIR TO GROUND	14	166.6750N	NONE	166.6750N	NONE	A
AIR TO GROUND	15	169.1500N	NONE	169.1500N	NONE	A
AIR GUARD	16	168.6250N	NONE	168.6250N	110.9	A
9. Prepared By (Resource Unit Leader)			Approved By (Planning Section Chief)		Date	Time
JEFF TURNER, RESL (T)			JOE BISHOP, PSC2 (T)		05/26/2017	1900

Division/Group Assignment List (ICS 204 WF)

1. Incident Name:			3.			
WEST MIMS			III		M/N	
2. Operational Period: DAY SHIFT 0730-1930						
Date/Time From: 05/27/2017 0730 SAT		Date/Time To: 05/27/2017 1930 SAT				
4. Operations Personnel						
PLANNING OPERATIONS CHIEF		TRENT INGRAM PHIL DANIELS (T)		OPERATIONS CHIEF		RICK DOLAN, FRED BOEHM BRYCE THOMAS (T)
BRANCH DIRECTOR		MARC CRAIN CHRIS LUNDGREN (T)		DIVISION/GROUP SUPERVISOR		KAREN SCHOLL CHRIS RANKIN (T)
SAFETY		LARRY CONNELL		AIR TACTICAL GROUP SUPERVISOR		MARK NUNEZ, KEN MCLAUGHLIN
5. Resources Assigned this Period						
Strike Team / Task Force / Resource Designator		LWD	Leader	Number Persons	Drop Off PT./Time	Pick Up PT./Time
SOF2 O-195		05/27	JOHN MCGEE	1	EAST CAMP/0730	EAST CAMP/1930
SOF2 O-589		05/27	GALEN YOUNG	1	EAST CAMP/0730	EAST CAMP/1930
SOF2(T) O-279		06/01	ROBERT THORP	1	EAST CAMP/0730	EAST CAMP/1930
FOBS O-691		05/30	BRYAN BOATMAN	1	EAST CAMP/0730	EAST CAMP/1930
FOBS(T) O-693		06/01	EVAN HAUGAN	1	EAST CAMP/0730	EAST CAMP/1930
FOBS(T) O-408		06/08	ADAM HUMBACH	1	EAST CAMP/0730	EAST CAMP/1930
FOBS O-690		06/01	REED HECKLY	1	EAST CAMP/0730	EAST CAMP/1930
6. Control Operations/Work Assignments:						
Task						
<ul style="list-style-type: none"> • Prepare for strategic firing of control lines. • Respond to any new starts within the division. • Patrol and mop up fuels appropriate to fuel type and anticipated weather and fire behavior. 						
Purpose						
<ul style="list-style-type: none"> • Keep fire west of Swamp Edge Break. 						
End State						
<ul style="list-style-type: none"> • Fire is contained by adequate control line to reduce threat to escape; minimizing damage to private timberlands, private lands, and other resource values at risk. 						
7. Special Instructions:						
8. Division/Group Communication Summary						
Function	Channel	RX Frequency N/W	RX Tone/NAC	TX Frequency N/W	TX Tone/NAC	Mode
COMMAND	3	159.1200N	NONE	151.3700N	82.5	A
AIR TO GROUND	4	169.2000N	NONE	169.2000N	NONE	A
TACTICAL	9	159.2850N	NONE	159.2850N	156.7	A
AIR TO GROUND	14	166.6750N	NONE	166.6750N	NONE	A
AIR TO GROUND	15	169.1500N	NONE	169.1500N	NONE	A
AIR GUARD	16	168.6250N	NONE	168.6250N	110.9	A
9. Prepared By (Resource Unit Leader)			Approved By (Planning Section Chief)		Date	Time
JEFF TURNER, RESL (T)			JOE BISHOP, PSC2 (T)		05/26/2017	1900

Division/Group Assignment List (ICS 204 WF)

1. Incident Name:			3.			
WEST MIMS			Branch:		Division/Group:	
2. Operational Period:			III			
DAY SHIFT 0730-1930			M/N			
Date/Time From: 05/27/2017 0730 SAT		Date/Time To: 05/27/2017 1930 SAT				
4. Operations Personnel						
PLANNING OPERATIONS CHIEF		TRENT INGRAM PHIL DANIELS (T)		OPERATIONS CHIEF		RICK DOLAN, FRED BOEHM BRYCE THOMAS (T)
BRANCH DIRECTOR		MARC CRAIN CHRIS LUNDGREN (T)		DIVISION/GROUP SUPERVISOR		KAREN SCHOLL CHRIS RANKIN (T)
SAFETY		LARRY CONNELL		AIR TACTICAL GROUP SUPERVISOR		MARK NUNEZ, KEN MCLAUGHLIN
7. Special Instructions:						
Ensure LCES is in place before operations begin and stay hydrated. Drive defensively and with lights on at all times. Identify escape routes.						
Use caution when working around logging operations.						
For IA protocol see page 7						
Medical Emergency Channel: Command						
ETA for Ambulance to Scene:						
Air: 20 – 30 mins						
Ground: 10 - 15 mins Paved roads only.						
IWI – IC or approved person will use Channel 16 (Air Guard) for contact with air ambulance						
Air Ambulance landing zone to be determined by IWI – IC						
Utilize engines to provide dust abatement, as needed, prior to air ambulance landing						
8. Division/Group Communication Summary						
Function	Channel	RX Frequency N/W	RX Tone/NAC	TX Frequency N/W	TX Tone/NAC	Mode
COMMAND	3	159.1200N	NONE	151.3700N	82.5	A
AIR TO GROUND	4	169.2000N	NONE	169.2000N	NONE	A
TACTICAL	9	159.2850N	NONE	159.2850N	156.7	A
AIR TO GROUND	14	166.6750N	NONE	166.6750N	NONE	A
AIR TO GROUND	15	169.1500N	NONE	169.1500N	NONE	A
AIR GUARD	16	168.6250N	NONE	168.6250N	110.9	A
9. Prepared By (Resource Unit Leader)			Approved By (Planning Section Chief)		Date	Time
JEFF TURNER, RESL (T)			JOE BISHOP, PSC2 (T)		05/26/2017	1900

Division/Group Assignment List (ICS 204 WF)

1. Incident Name:			3.			
WEST MIMS			Branch:		Division/Group:	
2. Operational Period: DAY SHIFT 0730-1930			III		O	
Date/Time From: 05/27/2017 0730 SAT		Date/Time To: 05/27/2017 1930 SAT				
4. Operations Personnel						
PLANNING OPERATIONS CHIEF		TRENT INGRAM PHIL DANIELS (T)		OPERATIONS CHIEF		RICK DOLAN FRED BOEHM, BRYCE THOMAS (T)
BRANCH DIRECTOR		MARC CRAIN CHRIS LUNDGREN (T)		DIVISION/GROUP SUPERVISOR		SHAWN ALEXANDER MICHAEL GUE (T)
SAFETY		LARRY CONNELL		AIR TACTICAL GROUP SUPERVISOR		MARK NUNEZ, KEN MCLAUGHLIN
5. Resources Assigned this Period						
Strike Team / Task Force / Resource Designator		LWD	Leader	Number Persons	Drop Off PT./Time	Pick Up PT./Time
ICT4 (T) E-657.2		05/27	SAM I MARKSON	1	EAST CAMP/0730	EAST CAMP/1930
ENG6 - 2661 - BRAZORIA REFUGE E-657		05/27	SIGAFOOSE	2	EAST CAMP/0730	EAST CAMP/1930
ENG6 - FWS - 462 E-261		06/03	CHRISTOPHER NOTHSTINE	3	EAST CAMP/0730	EAST CAMP/1930
ENGINE - T6 - 5670 E-726		05/27	BRANDON RAMIREZ	2	EAST CAMP/0730	EAST CAMP/1930
TFLD O-635		05/31	BRIAN ANDERSON	1	EAST CAMP/0730	EAST CAMP/1930
ENG6 - 611 E-663		05/29	JORDAN BLACK	3	EAST CAMP/0730	EAST CAMP/1930
ENG6 - NMLNF621 - SACRAMENTO RD E-765		05/30	TIM MCELHNEY	4	EAST CAMP/0730	EAST CAMP/1930
ENG6 J3 CONTRACTING - 07 E-732		05/31	ANTHONY PARLIC	3	EAST CAMP/0730	EAST CAMP/1930
ENG6 J3 CONTRACTING - 12 E-733		05/31	LANCE WOLLEBAEK	3	EAST CAMP/0730	EAST CAMP/1930
TFLD O-592		05/28	DALE E MIDDLETON	1	EAST CAMP/0730	EAST CAMP/1930
TFLD O-594		05/29	MICHAEL SMITH	1	EAST CAMP/0730	EAST CAMP/1930
ENG6 - 161 E-656		05/27	TOD BENNETT	3	EAST CAMP/0730	EAST CAMP/1930
ENG6 - BOULDER COUNTY SHERIFF - ENGINE 6531 E-847		05/31	KENYON SHEPHARD	6	EAST CAMP/0730	EAST CAMP/1930
WTS2 - BONNELL SAND & GRAVEL I E-366		06/06	HARLIN VINCENT	1	EAST CAMP/0730	EAST CAMP/1930
8. Division/Group Communication Summary						
Function	Channel	RX Frequency N/W	RX Tone/NAC	TX Frequency N/W	TX Tone/NAC	Mode
COMMAND	3	159.1200N	NONE	151.3700N	82.5	A
AIR TO GROUND	4	169.2000N	NONE	169.2000N	NONE	A
TACTICAL	11	163.7125N	NONE	163.7125N	NONE	A
AIR TO GROUND	14	166.6750N	NONE	166.6750N	NONE	A
AIR TO GROUND	15	169.1500N	NONE	169.1500N	NONE	A
AIR GUARD	16	168.6250N	NONE	168.6250N	110.9	A
9. Prepared By (Resource Unit Leader)			Approved By (Planning Section Chief)		Date	Time
JEFF TURNER, RESL(T)			JOE BISHOP, PSC2 (T)		05/26/2017	1900

Division/Group Assignment List (ICS 204 WF)

1. Incident Name:			3.			
WEST MIMS			III		O	
2. Operational Period: DAY SHIFT 0730-1930						
Date/Time From: 05/27/2017 0730 SAT		Date/Time To: 05/27/2017 1930 SAT				
4. Operations Personnel						
PLANNING OPERATIONS CHIEF		TRENT INGRAM PHIL DANIELS (T)		OPERATIONS CHIEF		RICK DOLAN FRED BOEHM, BRYCE THOMAS (T)
BRANCH DIRECTOR		MARC CRAIN CHRIS LUNDGREN (T)		DIVISION/GROUP SUPERVISOR		SHAWN ALEXANDER MICHAEL GUE (T)
SAFETY		LARRY CONNELL		AIR TACTICAL GROUP SUPERVISOR		MARK NUNEZ, KEN MCLAUGHLIN
5. Resources Assigned this Period						
Strike Team / Task Force / Resource Designator		LWD	Leader	Number Persons	Drop Off PT./Time	Pick Up PT./Time
STEQ O-679		06/03	DAVID BROWN	1	EAST CAMP/0730	EAST CAMP/1930
TPL3 - TRACTOR PLOW - T3 - GFC3266 E-370		06/03	SPENCER WOOD	2	EAST CAMP/0730	EAST CAMP/1930
TPL2 - TRACTOR PLOW - T2 - GFC3307 E-371		06/03	CHRIS W MULLIS	2	EAST CAMP/0730	EAST CAMP/1930
TPL2 - TRACTOR PLOW - T2 - GFC3295 E-372		06/03	BRIAN THOMPSON	2	EAST CAMP/0730	EAST CAMP/1930
TPL4 - MSR2 E-594		06/03		1	EAST CAMP/0730	EAST CAMP/1930
EMPF O-388		05/27	KYLE PORT	1	EAST CAMP/0730	EAST CAMP/1930
SOF2 O-195 520-591-2434			JOHN MCGEE	1	EAST CAMP/0730	EAST CAMP/1930
SOF2 (T) O-279		06/01	ROBERT THORP	1	EAST CAMP/0730	EAST CAMP/1930
SOF2 O-589			GALEN R YOUNG	1	EAST CAMP/0730	EAST CAMP/1930
FOBS O-691		05/30	BRYAN BOATMAN	1		
FOBS (T) O-693		06/01	EVAN JAMES HAUGAN	1		
8. Division/Group Communication Summary						
Function	Channel	RX Frequency N/W	RX Tone/NAC	TX Frequency N/W	TX Tone/NAC	Mode
COMMAND	3	159.1200N	NONE	151.3700N	82.5	A
AIR TO GROUND	4	169.2000N	NONE	169.2000N	NONE	A
TACTICAL	11	163.7125N	NONE	163.7125N	NONE	A
AIR TO GROUND	14	166.6750N	NONE	166.6750N	NONE	A
AIR TO GROUND	15	169.1500N	NONE	169.1500N	NONE	A
AIR GUARD	16	168.6250N	NONE	168.6250N	110.9	A
9. Prepared By (Resource Unit Leader)			Approved By (Planning Section Chief)		Date	Time
JEFF TURNER, RESL(T)			JOE BISHOP, PSC2 (T)		05/26/2017	1900

Division/Group Assignment List (ICS 204 WF)

1. Incident Name:			3.			
WEST MIMS			III		O	
2. Operational Period: DAY SHIFT 0730-1930						
Date/Time From: 05/27/2017 0730 SAT		Date/Time To: 05/27/2017 1930 SAT				
4. Operations Personnel						
PLANNING OPERATIONS CHIEF		TRENT INGRAM PHIL DANIELS (T)		OPERATIONS CHIEF		RICK DOLAN FRED BOEHM, BRYCE THOMAS (T)
BRANCH DIRECTOR		MARC CRAIN CHRIS LUNDGREN (T)		DIVISION/GROUP SUPERVISOR		SHAWN ALEXANDER MICHAEL GUE (T)
SAFETY		LARRY CONNELL		AIR TACTICAL GROUP SUPERVISOR		MARK NUNEZ, KEN MCLAUGHLIN
6. Control Operations/Work Assignments:						
Task						
<ul style="list-style-type: none"> • Respond to any new starts within the division. • Patrol and mop up fuels appropriate to fuel type and anticipated weather and fire behavior. 						
Purpose						
<ul style="list-style-type: none"> • Keep fire within established fire containment lines. • 						
End State						
<ul style="list-style-type: none"> • Fire is contained by adequate control line to reduce threat to escape; minimizing damage to private timberlands, private lands, and other resource values at risk. 						
7. Special Instructions:						
Ensure LCES are in place before operations begin and stay hydrated. Drive defensively and with lights on at all times. Identify escape routes.						
Use caution when working around logging operations.						
For IA protocol see page 7						
Medical Emergency Channel: Command ETA for Ambulance to Scene: Air: 20 – 30 mins Ground: 10 - 15 mins Paved roads only. IWI – IC or approved person will use Channel 16 (Air Guard) for contact with air ambulance Air Ambulance landing zone to be determined by IWI – IC Utilize engines to provide dust abatement, as needed, prior to air ambulance landing						
8. Division/Group Communication Summary						
Function	Channel	RX Frequency N/W	RX Tone/NAC	TX Frequency N/W	TX Tone/NAC	Mode
COMMAND	3	159.1200N	NONE	151.3700N	82.5	A
AIR TO GROUND	4	169.2000N	NONE	169.2000N	NONE	A
TACTICAL	11	163.7125N	NONE	163.7125N	NONE	A
AIR TO GROUND	14	166.6750N	NONE	166.6750N	NONE	A
AIR TO GROUND	15	169.1500N	NONE	169.1500N	NONE	A
AIR GUARD	16	168.6250N	NONE	168.6250N	110.9	A
9. Prepared By (Resource Unit Leader)			Approved By (Planning Section Chief)		Date	Time
JEFF TURNER, RESL(T)			JOE BISHOP, PSC2 (T)		05/26/2017	1900

Division/Group Assignment List (ICS 204 WF)

1. Incident Name:			3.			
WEST MIMS			III		Division/Group: INITIAL ATTACK EAST	
2. Operational Period: DAY SHIFT 0730-1930						
Date/Time From: 05/27/2017 0730 SAT		Date/Time To: 05/27/2017 1930 SAT				
4. Operations Personnel						
PLANNING OPERATIONS CHIEF		TRENT INGRAM PHIL DANIELS (T)		OPERATIONS CHIEF		
BRANCH DIRECTOR		MARC CRAIN CHRIS LUNDGREN (T)		DIVISION/GROUP SUPERVISOR		
SAFETY		LARRY CONNELL		AIR TACTICAL GROUP SUPERVISOR		
				RICK DOLAN FRED BOEHM, BRYCE THOMAS (T)		
				GREGG BUCKALEW ARTURO GASDIK (T)		
				MARK NUNEZ KEN MCLAUGHLIN		
5. Resources Assigned this Period						
Strike Team / Task Force / Resource Designator		LWD	Leader	Number Persons	Drop Off PT./Time	Pick Up PT./Time
TFLD O-205		06/06	ADAM MCCULLOUGH	1	EAST CAMP/0730	EAST CAMP/1930
TFLD(T) E-35.3		06/06	RANDALL MCLAIN	1	EAST CAMP/0730	EAST CAMP/1930
ENG6 NC-POR PLE1 E-2		06/03	AIMEE MIDGETT	2	EAST CAMP/0730	EAST CAMP/1930
ENG6 OK-4261 E-36		05/29	ANDY HEISEY	2	EAST CAMP/0730	EAST CAMP/1930
TPL2 SC-CRR D-223 E-240			UNSTAFFED	1	EAST CAMP/0730	EAST CAMP/1930
TPL2 NC-POR 750J PX3 E-131		06/07	KENNY POWELL	1	EAST CAMP/0730	EAST CAMP/1930
TPL2 OKE 56 - TPL E-35			UNSTAFFED	1	EAST CAMP/0730	EAST CAMP/1930
TPL4 SMR #4441 E-508		05/28		1	EAST CAMP/0730	EAST CAMP/1930
TPL2 GA-SAR D922 E-288		05/30	CHARLES JOHNSON	1	EAST CAMP/0730	EAST CAMP/1930
DOZ2 OKE-54 E-34		05/30	FED PRIVETT	1	EAST CAMP/0730	EAST CAMP/1930
ICT4		05/30	CORY BRYANT	1	EAST CAMP/0730	EAST CAMP/1930
SOF2 O-539		05/26	PAUL BOUCHER	1	EAST CAMP/0730	EAST CAMP/1930
6. Control Operations/Work Assignments:						
8. Division/Group Communication Summary						
Function	Channel	RX Frequency N/W	RX Tone/NAC	TX Frequency N/W	TX Tone/NAC	Mode
COMMAND	7	159.2700N	156.7	151.1000N	100.0	A
COMMAND	8	159.2700N	156.7	151.1000N	123.0	A
AIR TO GROUND	4	169.2000N	NONE	169.2000N	NONE	A
TACTICAL	12	159.4425N	NONE	159.4425N	NONE	A
AIR TO GROUND	14	166.6750N	NONE	166.6750N	NONE	A
AIR TO GROUND	15	169.1500N	NONE	169.1500N	NONE	A
AIR GUARD	16	168.6250N	NONE	168.6250N	110.9	A
9. Prepared By (Resource Unit Leader)			Approved By (Planning Section Chief)		Date	Time
JEFF TURNER, RESL (T)			JOE BISHOP, PSC2 (T)		05/26/2017	1900

Division/Group Assignment List (ICS 204 WF)

1. Incident Name:			3.				
WEST MIMS			III	Branch:		Division/Group:	
2. Operational Period: DAY SHIFT 0730-1930				INITIAL ATTACK EAST			
Date/Time From: 05/27/2017 0730 SAT	Date/Time To: 05/27/2017 1930 SAT						
4. Operations Personnel							
PLANNING OPERATIONS CHIEF		TRENT INGRAM PHIL DANIELS (T)		OPERATIONS CHIEF		RICK DOLAN FRED BOEHM, BRYCE THOMAS (T)	
BRANCH DIRECTOR		MARC CRAIN CHRIS LUNDGREN (T)		DIVISION/GROUP SUPERVISOR		GREGG BUCKALEW ARTURO GASDIK (T)	
SAFETY		LARRY CONNELL		AIR TACTICAL GROUP SUPERVISOR		MARK NUNEZ KEN MCLAUGHLIN	
6. Control Operations/Work Assignments:							
Task							
<ul style="list-style-type: none"> • Respond to any new starts as requested by OKR duty officer. • Coordinate initial attack action with assigned aviation and/or ground assets. 							
Purpose							
<ul style="list-style-type: none"> • Ensure timely response on any initial attack within OKR jurisdictional boundaries and vicinity. 							
End State							
<ul style="list-style-type: none"> • Fire activity has been detected and appropriate action has been initiated. 							
7. Special Instructions:							
<p>Contact Resource Advisors for any cultural or archeological needs, as well as, RCW concerns. Ensure LCES is in place before operations begin and stay hydrated. Drive defensively and with lights on at all times. Communications: Use the tactical channel for the division you are in. Staging on east side at Refuge office.</p> <p>Use caution when working around logging operations.</p> <p>Medical Emergency Channel: Command ETA for Ambulance to Scene: Air: 20 – 30 mins Ground: 10 - 15 mins Paved roads only. IWI – IC or approved person will use Channel 16 (Air Guard) for contact with air ambulance Air Ambulance landing zone to be determined by IWI – IC Utilize engines to provide dust abatement, as needed, prior to air ambulance landing</p> <p>For IA protocol see page 7</p>							
8. Division/Group Communication Summary							
Function	Channel	RX Frequency N/W	RX Tone/NAC	TX Frequency N/W	TX Tone/NAC	Mode	
COMMAND	7	159.2700N	156.7	151.1000N	100.0	A	
COMMAND	8	159.2700N	156.7	151.1000N	123.0	A	
AIR TO GROUND	4	169.2000N	NONE	169.2000N	NONE	A	
TACTICAL	12	159.4425N	NONE	159.4425N	NONE	A	
AIR TO GROUND	14	166.6750N	NONE	166.6750N	NONE	A	
AIR TO GROUND	15	169.1500N	NONE	169.1500N	NONE	A	
AIR GUARD	16	168.6250N	NONE	168.6250N	110.9	A	
9. Prepared By (Resource Unit Leader)			Approved By (Planning Section Chief)		Date	Time	
JEFF TURNER, RESL (T)			JOE BISHOP, PSC2 (T)		05/26/2017	1900	

Division/Group Assignment List (ICS 204 WF)

1. Incident Name:			3.			
WEST MIMS			IV		A	
2. Operational Period: DAY SHIFT 0730-1930						
Date/Time From: 05/27/2017 0730 SAT		Date/Time To: 05/27/2017 1930 SAT				
4. Operations Personnel						
PLANNING OPERATIONS CHIEF		TRENT INGRAM PHIL DANIELS (T)		OPERATIONS CHIEF		RICK DOLAN FRED BOEHM, BRYCE THOMAS (T)
BRANCH DIRECTOR		STEVE MILLER		DIVISION/GROUP SUPERVISOR		TOM TALBOT JEFF BOSTWICK (T)
SAFETY		LARRY CONNELL		AIR TACTICAL GROUP SUPERVISOR		MARK NUNEZ, KEN MCLAUGHLIN
5. Resources Assigned this Period						
Strike Team / Task Force / Resource Designator		LWD	Leader	Number Persons	Drop Off PT./Time	Pick Up PT./Time
TFLD O-606		06/04	DAREK PEPPL	1	EAST CAMP/0730	EAST CAMP 1930/
ENG3 CO-PBS DEER MOUNTAIN FPD 12 E-280		06/06	JOSEPH CRAIG WATTS	3	EAST CAMP/0730	EAST CAMP 1930/
ENG6 MT-KNF 631 E-285		05/31	JULIAN ADAUTO	5	EAST CAMP/0730	EAST CAMP 1930/
ENG6 MS-MNF 6171 E-77		06/05	DAVID GIBSON	3	EAST CAMP/0730	EAST CAMP 1930/
ENG6 AR-OZF 631 E-56		06/04	DARRYL BRIGHTWELL	3	EAST CAMP/0730	EAST CAMP 1930/
ENG6 J3 CONTSTRUCTION 07 E-731		05/31	CURTIC PUMPHREY	3	EAST CAMP/0730	EAST CAMP 1930/
ENG6 KY-KYS 410 E-661			UNSTAFFED	2	EAST CAMP/0730	EAST CAMP 1930/
WTS2 TIPTON & YOUNG E-347		06/05	ROBERT COYLE	1	EAST CAMP/0730	EAST CAMP 1930/
WTS2 STRICKLANDS E-272		06/05	JOHN TINER	1	EAST CAMP/0730	EAST CAMP 1930/
8. Division/Group Communication Summary						
Function	Channel	RX Frequency N/W	RX Tone/NAC	TX Frequency N/W	TX Tone/NAC	Mode
AIR TO GROUND	4	169.2000N	NONE	169.2000N	NONE	A
COMMAND	8	159.2700N	156.7	151.1000N	123.0	A
TACTICAL	12	159.4425N	NONE	159.4425N	NONE	A
AIR TO GROUND	14	166.6750N	NONE	166.6750N	NONE	A
AIR TO GROUND	15	169.1500N	NONE	169.1500N	NONE	A
AIR GUARD	16	168.6250N	NONE	168.6250N	110.9	A
9. Prepared By (Resource Unit Leader)			Approved By (Planning Section Chief)		Date	Time
JEFF TURNER, RESL (T)			JOE BISHOP, PSC2 (T)		05/26/2017	1900

Division/Group Assignment List (ICS 204 WF)

1. Incident Name:			3.			
WEST MIMS			IV		A	
2. Operational Period: DAY SHIFT 0730-1930						
Date/Time From: 05/27/2017 0730 SAT		Date/Time To: 05/27/2017 1930 SAT				
4. Operations Personnel						
PLANNING OPERATIONS CHIEF		TRENT INGRAM PHIL DANIELS (T)		OPERATIONS CHIEF		RICK DOLAN FRED BOEHM, BRYCE THOMAS (T)
BRANCH DIRECTOR		STEVE MILLER		DIVISION/GROUP SUPERVISOR		TOM TALBOT JEFF BOSTWICK (T)
SAFETY		LARRY CONNELL		AIR TACTICAL GROUP SUPERVISOR		MARK NUNEZ, KEN MCLAUGHLIN
5. Resources Assigned this Period						
Strike Team / Task Force / Resource Designator		LWD	Leader	Number Persons	Drop Off PT./Time	Pick Up PT./Time
TFLD O-656		05/31	KEN COOPER	1	EAST CAMP/0730	EAST CAMP 1930/
TFLD (T) O-672		05/30	JAMIE TYSON	1	EAST CAMP/0730	EAST CAMP 1930/
HEQB O-572		05/27	BERTRAM C SMITH	1	EAST CAMP/0730	EAST CAMP 1930/
TPL4 8191 - HUNTSVILLE E-570		06/07	BERNHARD BUCKNER	2	EAST CAMP/0730	EAST CAMP 1930/
TX FOREST SERVICE TRACTOR PLOW -T4 E-471		06/07	MAYNARD WILLIAMS	2	EAST CAMP/0730	EAST CAMP 1930/
TPL4 6192 - NEW BOSTON E-467		06/07	JONATHON KELLER	2	EAST CAMP/0730	EAST CAMP 1930/
TPL4 7292 - JACKSONVILLE E-571		05/26	TERRY RICHARDSON		EAST CAMP/0730	EAST CAMP 1930/
EMPF E-375.2		06/13	MARTIN CARRILLO	1	EAST CAMP/0730	EAST CAMP 1930/
SOF2 O-540 229-561-4259		06/11	JACK BENZILIO	1	EAST CAMP/0730	EAST CAMP 1930/
6. Control Operations/Work Assignments:						
Task						
<ul style="list-style-type: none"> • Patrol and mop up fuels appropriate to fuel type and anticipated weather and fire behavior. • Respond to any new starts within the division. 						
Purpose						
<ul style="list-style-type: none"> • Keep fire north of FL 2. 						
End State						
<ul style="list-style-type: none"> • Fire is contained by adequate control line to reduce threat to escape; minimizing damage to private timberlands, private lands, and other resource values at risk. 						
8. Division/Group Communication Summary						
Function	Channel	RX Frequency N/W	RX Tone/NAC	TX Frequency N/W	TX Tone/NAC	Mode
AIR TO GROUND	4	169.2000N	NONE	169.2000N	NONE	A
COMMAND	8	159.2700N	156.7	151.1000N	123.0	A
TACTICAL	12	159.4425N	NONE	159.4425N	NONE	A
AIR TO GROUND	14	166.6750N	NONE	166.6750N	NONE	A
AIR TO GROUND	15	169.1500N	NONE	169.1500N	NONE	A
AIR GUARD	16	168.6250N	NONE	168.6250N	110.9	A
9. Prepared By (Resource Unit Leader)			Approved By (Planning Section Chief)		Date	Time
JEFF TURNER, RESL (T)			JOE BISHOP, PSC2 (T)		05/26/2017	1900

Division/Group Assignment List (ICS 204 WF)

1. Incident Name:			3.			
WEST MIMS			IV		A	
2. Operational Period: DAY SHIFT 0730-1930						
Date/Time From: 05/27/2017 0730 SAT		Date/Time To: 05/27/2017 1930 SAT				
4. Operations Personnel						
PLANNING OPERATIONS CHIEF		TRENT INGRAM PHIL DANIELS (T)		OPERATIONS CHIEF		RICK DOLAN FRED BOEHM, BRYCE THOMAS (T)
BRANCH DIRECTOR		STEVE MILLER		DIVISION/GROUP SUPERVISOR		TOM TALBOT JEFF BOSTWICK (T)
SAFETY		LARRY CONNELL		AIR TACTICAL GROUP SUPERVISOR		MARK NUNEZ, KEN MCLAUGHLIN
7. Special Instructions:						
<p>Ensure LCES is in place before operations begin and stay hydrated. Drive defensively and with lights on at all times. Identify escape routes. Bridge near DP 9 restricted to pickups - No engines. Bridge on swamp perimeter road just east of first Branch has steep drop offs - 1 lane travel - watch for barricades.</p> <p>Use caution when working around logging operations.</p> <p>For IA protocol see page 7</p> <p>Medical Emergency Channel: Command ETA for Ambulance to Scene: Air: 20 – 30 mins Ground: 10 - 15 mins Paved roads only. IWI – IC or approved person will use Channel 16 (Air Guard) for contact with air ambulance Air Ambulance landing zone to be determined by IWI – IC Utilize engines to provide dust abatement, as needed, prior to air ambulance landing</p>						
8. Division/Group Communication Summary						
Function	Channel	RX Frequency N/W	RX Tone/NAC	TX Frequency N/W	TX Tone/NAC	Mode
AIR TO GROUND	4	169.2000N	NONE	169.2000N	NONE	A
COMMAND	8	159.2700N	156.7	151.1000N	123.0	A
TACTICAL	12	159.4425N	NONE	159.4425N	NONE	A
AIR TO GROUND	14	166.6750N	NONE	166.6750N	NONE	A
AIR TO GROUND	15	169.1500N	NONE	169.1500N	NONE	A
AIR GUARD	16	168.6250N	NONE	168.6250N	110.9	A
9. Prepared By (Resource Unit Leader)			Approved By (Planning Section Chief)		Date	Time
JEFF TURNER, RESL (T)			JOE BISHOP, PSC2 (T)		05/26/2017	1900

Division/Group Assignment List (ICS 204 WF)

1. Incident Name:				3.			
WEST MIMS				IV		Y	
2. Operational Period: DAY SHIFT 0730-1930							
Date/Time From: 05/27/2017 0730 SAT		Date/Time To: 05/27/2017 1930 SAT					
4. Operations Personnel							
PLANNING OPERATIONS CHIEF		TRENT INGRAM PHIL DANIELS (T)		OPERATIONS CHIEF		RICK DOLAN FRED BOEHM, BRYCE THOMAS (T)	
BRANCH DIRECTOR		STEVE MILLER		DIVISION/GROUP SUPERVISOR		RANDY GREGORY SEAN BASSO (T)	
SAFETY		LARRY CONNELL		AIR TACTICAL GROUP SUPERVISOR		MARK NUNEZ, KEN MCLAUGHLIN	
5. Resources Assigned this Period							
Strike Team / Task Force / Resource Designator		LWD	Leader	Number Persons	Drop Off PT./Time	Pick Up PT./Time	
MODULE - WILDLAND FIRE - SW SAGUARO NP O-477		05/28	JASON THIVENER	7	EAST CAMP/0730	EAST CAMP/1930	
TFLD O-508		05/30	LISA M GOWE	1	EAST CAMP/0730	EAST CAMP/1930	
ENG3 CO-DRS DURANGO BRUSH 31 E-869		06/03	ALLEN R OTTMAN	4	EAST CAMP/0730	EAST CAMP/1930	
ENG6 AR-OZF BM - E-651 E-713		05/29	PAUL DZIEKAN	3	EAST CAMP/0730	EAST CAMP/1930	
WTS1 - 357 - PB 350505 HASSELL E-476		06/09	ROBERT EDENFIELD	1	EAST CAMP/0730	EAST CAMP/1930	
GOAT 1 - UTV PENDER LAND E-797		06/01	KEVIN CROOM	1	EAST CAMP/0730	EAST CAMP/1930	
GOAT 2 - UTV ENDICOTT E-798		06/01	THOMAS ENDICOTT	1	EAST CAMP/0730	EAST CAMP/1930	
TFLD O-648		05/30	STEVE YOUNG	1	EAST CAMP/0730	EAST CAMP/1930	
ENG6 SC-SRF 603 E-662			BRIAN GORMAN	3	EAST CAMP/0730	EAST CAMP/1930	
WTT1 - VIN# E-588			HUBERT EDENFIELD HASSELLCO	1	EAST CAMP/0730	EAST CAMP/1930	
SKG4 - MS-MSR-E611 E-652		05/28	REBECCA GOOSMAN	2	EAST CAMP/0730	EAST CAMP/1930	
8. Division/Group Communication Summary							
Function	Channel	RX Frequency N/W	RX Tone/NAC	TX Frequency N/W	TX Tone/NAC	Mode	
AIR TO GROUND	4	169.2000N	NONE	169.2000N	NONE	A	
COMMAND	8	159.2700N	156.7	151.1000N	123.0	A	
TACTICAL	9	159.2850N	NONE	159.2850N	156.7	A	
AIR TO GROUND	14	166.6750N	NONE	166.6750N	NONE	A	
AIR TO GROUND	15	169.1500N	NONE	169.1500N	NONE	A	
AIR GUARD	16	168.6250N	NONE	168.6250N	110.9	A	
9. Prepared By (Resource Unit Leader)			Approved By (Planning Section Chief)			Date	Time
JEFF TURNER, RESL (T)			JOE BISHOP, PSC2 (T)			05/26/2017	1900

Division/Group Assignment List (ICS 204 WF)

1. Incident Name:			3.			
WEST MIMS			IV		Y	
2. Operational Period: DAY SHIFT 0730-1930						
Date/Time From: 05/27/2017 0730 SAT		Date/Time To: 05/27/2017 1930 SAT				
4. Operations Personnel						
PLANNING OPERATIONS CHIEF		TRENT INGRAM PHIL DANIELS (T)		OPERATIONS CHIEF		RICK DOLAN FRED BOEHM, BRYCE THOMAS (T)
BRANCH DIRECTOR		STEVE MILLER		DIVISION/GROUP SUPERVISOR		RANDY GREGORY SEAN BASSO (T)
SAFETY		LARRY CONNELL		AIR TACTICAL GROUP SUPERVISOR		MARK NUNEZ, KEN MCLAUGHLIN
5. Resources Assigned this Period						
Strike Team / Task Force / Resource Designator		LWD	Leader	Number Persons	Drop Off PT./Time	Pick Up PT./Time
HEQB O-644		05/29	TRENTON NEIL	1	EAST CAMP/0730	EAST CAMP/1930
DOZER T2 - VIN# 922092 E-584		05/26	SIMMONS	1	EAST CAMP/0730	EAST CAMP/1930
FOBS O-694		06/01	JASON KAMMANN	1	EAST CAMP/0730	EAST CAMP/1930
FOBS (T) O-696		06/01	HAPPY HOPPE	1	EAST CAMP/0730	EAST CAMP/1930
EMPF E-315.2		05/29	ALYSE GUTIERREZ	1	EAST CAMP/0730	EAST CAMP/1930
SOF2 O-494		05/29	DARROLL ABEYTA	1	EAST CAMP/0730	EAST CAMP/1930
6. Control Operations/Work Assignments:						
Task						
<ul style="list-style-type: none"> • Respond to any new starts within the division. • Patrol and mop up fuels appropriate to fuel type and anticipated weather and fire behavior. Eliminate obvious smoke which will trigger unnecessary calls to 911 system. 						
Purpose						
<ul style="list-style-type: none"> • Keep fire within established fire containment lines. 						
End State						
<ul style="list-style-type: none"> • Fire is contained by adequate control line to reduce threat to escape; minimizing damage to private timberlands, private lands, and other resource values at risk. 						
8. Division/Group Communication Summary						
Function	Channel	RX Frequency N/W	RX Tone/NAC	TX Frequency N/W	TX Tone/NAC	Mode
AIR TO GROUND	4	169.2000N	NONE	169.2000N	NONE	A
COMMAND	8	159.2700N	156.7	151.1000N	123.0	A
TACTICAL	9	159.2850N	NONE	159.2850N	156.7	A
AIR TO GROUND	14	166.6750N	NONE	166.6750N	NONE	A
AIR TO GROUND	15	169.1500N	NONE	169.1500N	NONE	A
AIR GUARD	16	168.6250N	NONE	168.6250N	110.9	A
9. Prepared By (Resource Unit Leader)			Approved By (Planning Section Chief)		Date	Time
JEFF TURNER, RESL (T)			JOE BISHOP, PSC2 (T)		05/26/2017	1900

Division/Group Assignment List (ICS 204 WF)

1. Incident Name:			3.			
WEST MIMS			Branch:		Division/Group:	
2. Operational Period: DAY SHIFT 0730-1930			IV		Y	
Date/Time From: 05/27/2017 0730 SAT		Date/Time To: 05/27/2017 1930 SAT				
4. Operations Personnel						
PLANNING OPERATIONS CHIEF		TRENT INGRAM PHIL DANIELS (T)		OPERATIONS CHIEF		RICK DOLAN FRED BOEHM, BRYCE THOMAS (T)
BRANCH DIRECTOR		STEVE MILLER		DIVISION/GROUP SUPERVISOR		RANDY GREGORY SEAN BASSO (T)
SAFETY		LARRY CONNELL		AIR TACTICAL GROUP SUPERVISOR		MARK NUNEZ, KEN MCLAUGHLIN
7. Special Instructions:						
<p>Ensure LCES is in place before operations begin and stay hydrated. Drive defensively and with lights on at all times. Identify escape routes. Bridge near DP 9 restricted to pickups - No engines. Bridge on swamp perimeter road just east of first Branch has steep drop offs - 1 lane travel - watch for barricades.</p> <p>Use caution when working around logging operations.</p> <p>For IA protocol see page 7</p> <p>Medical Emergency Channel: Command ETA for Ambulance to Scene: Air: 20 – 30 mins Ground: 10 - 15 mins Paved roads only. IWI – IC or approved person will use Channel 16 (Air Guard) for contact with air ambulance Air Ambulance landing zone to be determined by IWI – IC Utilize engines to provide dust abatement, as needed, prior to air ambulance landing</p>						
8. Division/Group Communication Summary						
Function	Channel	RX Frequency N/W	RX Tone/NAC	TX Frequency N/W	TX Tone/NAC	Mode
AIR TO GROUND	4	169.2000N	NONE	169.2000N	NONE	A
COMMAND	8	159.2700N	156.7	151.1000N	123.0	A
TACTICAL	9	159.2850N	NONE	159.2850N	156.7	A
AIR TO GROUND	14	166.6750N	NONE	166.6750N	NONE	A
AIR TO GROUND	15	169.1500N	NONE	169.1500N	NONE	A
AIR GUARD	16	168.6250N	NONE	168.6250N	110.9	A
9. Prepared By (Resource Unit Leader)			Approved By (Planning Section Chief)		Date	Time
JEFF TURNER, RESL (T)			JOE BISHOP, PSC2 (T)		05/26/2017	1900

Division/Group Assignment List (ICS 204 WF)

1. Incident Name:			3.			
WEST MIMS			IV		Z	
2. Operational Period: DAY SHIFT 0730-1930						
Date/Time From: 05/27/2017 0730 SAT		Date/Time To: 05/27/2017 1930 SAT				
4. Operations Personnel						
PLANNING OPERATIONS CHIEF		TRENT INGRAM PHIL DAVIS (T)		OPERATIONS CHIEF		
BRANCH DIRECTOR		STEVE MILLER		DIVISION/GROUP SUPERVISOR		
SAFETY		LARRY CONNELL		AIR TACTICAL GROUP SUPERVISOR		
5. Resources Assigned this Period						
Strike Team / Task Force / Resource Designator		LWD	Leader	Number Persons	Drop Off PT./Time	Pick Up PT./Time
TFLD O-653		05/31	RYAN RAWLINSON	1	EAST CAMP/0730	EAST CAMP/1930
ENG6 - OLF - E-692 E-482		06/06	JODI STONE	4	EAST CAMP/0730	EAST CAMP/1930
ENG6 - OH-OHS E-62 E-761		05/28	JEFFREY G TUCKER	6	EAST CAMP/0730	EAST CAMP/1930
ENG6 - AR-OUF - PCS - E-692 E-737		05/29	MATTHEW MICHAEL KAMPF	3	EAST CAMP/0730	EAST CAMP/1930
ENG6 IN 5671 E-727		05/27	MIKE GRISMER	2	EAST CAMP/0730	EAST CAMP/1930
WTT2 - VIN# 009542 E-409			ANTHONY PALVICK	1	EAST CAMP/0730	EAST CAMP/1930
WTT2 - FARRELL TIMBER - VIN# 557261 E-410			BENJAMIN JOHNS	1	EAST CAMP/0730	EAST CAMP/1930
STEN O-658		05/29	JAMES T ALLISON	1	EAST CAMP/0730	EAST CAMP/1930
ENG6 - 361 E-775		05/29	DAVID T MARBERT	3	EAST CAMP/0730	EAST CAMP/1930
ENG6 - NMN2S - E 2-2 E-767		05/29	MAYLON BERT BROWN	2	EAST CAMP/0730	EAST CAMP/1930
WTT2 - VIN# 9250 E-574		06/02	TONY TIPTON	1	EAST CAMP/0730	EAST CAMP/1930
STEQ O-736		06/06	JEREMY CALLICUTT	1	EAST CAMP/0730	EAST CAMP/1930
STEQ (T) O-613		05/28	DANIEL KEITH GALLAGHER II	1	EAST CAMP/0730	EAST CAMP/1930
TPL3 NC-NCS - 3X77 E-568		06/06	JACK FRANKLIN	2	EAST CAMP/0730	EAST CAMP/1930
TPL3 NC-NCS - 3X65 E-569		06/06	MARK ALLEN	2	EAST CAMP/0730	EAST CAMP/1930
8. Division/Group Communication Summary						
Function	Channel	RX Frequency N/W	RX Tone/NAC	TX Frequency N/W	TX Tone/NAC	Mode
AIR TO GROUND	4	169.2000N	NONE	169.2000N	NONE	A
COMMAND	8	159.2700N	156.7	151.1000N	123.0	A
TACTICAL	10	168.3500N	NONE	168.3500N	NONE	A
AIR TO GROUND	14	166.6750N	NONE	166.6750N	NONE	A
AIR TO GROUND	15	169.1500N	NONE	169.1500N	NONE	A
AIR GUARD	16	168.6250N	NONE	168.6250N	110.9	A
9. Prepared By (Resource Unit Leader)			Approved By (Planning Section Chief)		Date	Time
JEFF TURNER, RESL (T)			JOE BISHOP, PSC2 (T)		05/26/2017	1900

Division/Group Assignment List (ICS 204 WF)

1. Incident Name:			3.			
WEST MIMS			Branch:		Division/Group:	
2. Operational Period: DAY SHIFT 0730-1930			IV		Z	
Date/Time From: 05/27/2017 0730 SAT		Date/Time To: 05/27/2017 1930 SAT				
4. Operations Personnel						
PLANNING OPERATIONS CHIEF		TRENT INGRAM PHIL DAVIS (T)		OPERATIONS CHIEF		
BRANCH DIRECTOR		STEVE MILLER		DIVISION/GROUP SUPERVISOR		
SAFETY		LARRY CONNELL		AIR TACTICAL GROUP SUPERVISOR		
5. Resources Assigned this Period						
Strike Team / Task Force / Resource Designator		LWD	Leader	Number Persons	Drop Off PT./Time	Pick Up PT./Time
DOZ2 - 750K - 261627 HASSELL E-530		06/09		1	EAST CAMP/0730	EAST CAMP/1930
EXCA T1 - VIN# 470405 HASSELL E-620		06/09		1	EAST CAMP/0730	EAST CAMP/1930
FOBS O-477.1		05/28	JAY YANCICK	1	EAST CAMP/0730	EAST CAMP/1930
EMPF E-314 602-571-2505		05/30	JOHN HECK	1	EAST CAMP/0730	EAST CAMP/1930
SOF2 O-494 505-470-2012		05/29	DARROLL ABEYTA	1	EAST CAMP/0730	EAST CAMP/1930
6. Control Operations/Work Assignments:						
Task						
<ul style="list-style-type: none"> • Respond to any new starts within the division. • Patrol and mop up fuels appropriate to fuel type and anticipated weather and fire behavior. • Rehabilitate contingency line. 						
Purpose						
<ul style="list-style-type: none"> • Keep fire within established fire containment lines. 						
End State						
<ul style="list-style-type: none"> • Fire is contained by adequate control line to reduce threat to escape; minimizing damage to private timberlands, private lands, and other resource values at risk. 						
7. Special Instructions:						
8. Division/Group Communication Summary						
Function	Channel	RX Frequency N/W	RX Tone/NAC	TX Frequency N/W	TX Tone/NAC	Mode
AIR TO GROUND	4	169.2000N	NONE	169.2000N	NONE	A
COMMAND	8	159.2700N	156.7	151.1000N	123.0	A
TACTICAL	10	168.3500N	NONE	168.3500N	NONE	A
AIR TO GROUND	14	166.6750N	NONE	166.6750N	NONE	A
AIR TO GROUND	15	169.1500N	NONE	169.1500N	NONE	A
AIR GUARD	16	168.6250N	NONE	168.6250N	110.9	A
9. Prepared By (Resource Unit Leader)			Approved By (Planning Section Chief)		Date	Time
JEFF TURNER, RESL (T)			JOE BISHOP, PSC2 (T)		05/26/2017	1900

Division/Group Assignment List (ICS 204 WF)

1. Incident Name:			3.			
WEST MIMS			IV		Z	
2. Operational Period: DAY SHIFT 0730-1930						
Date/Time From: 05/27/2017 0730 SAT		Date/Time To: 05/27/2017 1930 SAT				
4. Operations Personnel						
PLANNING OPERATIONS CHIEF		TRENT INGRAM PHIL DAVIS (T)		OPERATIONS CHIEF		RICK DOLAN FRED BOEHM, BRYCE THOMAS (T)
BRANCH DIRECTOR		STEVE MILLER		DIVISION/GROUP SUPERVISOR		JASON LONGFELLOW
SAFETY		LARRY CONNELL		AIR TACTICAL GROUP SUPERVISOR		MARK NUNEZ, KEN MCLAUGHLIN
7. Special Instructions:						
<p>Use caution when working around logging operations.</p> <p>Medical Emergency Channel: Command ETA for Ambulance to Scene: Air: 20 – 30 mins Ground: 10 - 15 mins Paved roads only. IWI – IC or approved person will use Channel 16 (Air Guard) for contact with air ambulance Air Ambulance landing zone to be determined by IWI – IC Utilize engines to provide dust abatement, as needed, prior to air ambulance landing</p> <p>For IA protocol see page 7</p> <p>2 - TPL Okie - O/H Donnie Harris DIVS 1 - 1050 KG - with operator GFC 1 - Appalachia 750 (Lease) with operator STEQ with 3-T2 Tractor Plow STEQ (Weaver) with 4-T3 Tractor Plow</p>						
8. Division/Group Communication Summary						
Function	Channel	RX Frequency N/W	RX Tone/NAC	TX Frequency N/W	TX Tone/NAC	Mode
AIR TO GROUND	4	169.2000N	NONE	169.2000N	NONE	A
COMMAND	8	159.2700N	156.7	151.1000N	123.0	A
TACTICAL	10	168.3500N	NONE	168.3500N	NONE	A
AIR TO GROUND	14	166.6750N	NONE	166.6750N	NONE	A
AIR TO GROUND	15	169.1500N	NONE	169.1500N	NONE	A
AIR GUARD	16	168.6250N	NONE	168.6250N	110.9	A
9. Prepared By (Resource Unit Leader)			Approved By (Planning Section Chief)		Date	Time
JEFF TURNER, RESL (T)			JOE BISHOP, PSC2 (T)		05/26/2017	1900

Division/Group Assignment List (ICS 204 WF)

1. Incident Name:			3.			
WEST MIMS			Branch:		Division/Group:	
2. Operational Period: DAY SHIFT 0730-1930			ROAD MAINT		EAST	
Date/Time From: 05/27/2017 0730 SAT		Date/Time To: 05/27/2017 1930 SAT				
4. Operations Personnel						
PLANNING OPERATIONS CHIEF		TRENT INGRAM PHIL DANIELS (T)		OPERATIONS CHIEF		RICK DOLAN FRED BOEHM, BRYCE THOMAS (T)
BRANCH DIRECTOR		BOB LITTLE		DIVISION/GROUP SUPERVISOR		KRIS CRODDY
SAFETY		LARRY CONNELL		AIR TACTICAL GROUP SUPERVISOR		MARK NUNEZ KEN MCLAUGHLIN
5. Resources Assigned this Period						
Strike Team / Task Force / Resource Designator		LWD	Leader	Number Persons	Drop Off PT./Time	Pick Up PT./Time
TFLD O-652		05/30	LONNY HAGEDON	1	EAST CAMP/0730	EAST CAMP/1930
WTS2 - TIPTON & YOUNG E-313		06/03	WOODY BARGERON	1	EAST CAMP/0730	EAST CAMP/1930
WTS2 - VIN# Z73020 E-746				1	EAST CAMP/0730	EAST CAMP/1930
WTS2 - HOME STYLE E-644		06/05	JOHNNY CASTILLO	1	EAST CAMP/0730	EAST CAMP/1930
HEQB O-547		06/12	RODNEY HELZER	1	EAST CAMP/0730	EAST CAMP/1930
GRD2 - R.O.T. RANCH E-234		06/05	ROBBY WORRELL	1	EAST CAMP/0730	EAST CAMP/1930
GRD2 - R.O.T. RANCH E-639		05/26	WESLEY WOOD	1	EAST CAMP/0730	EAST CAMP/1930
TFLD O-640		05/31	CASEY O'CONNOR	1	EAST CAMP/0730	EAST CAMP/1930
TFLD (T) O-671		05/29	JAMES BARBERI	1	EAST CAMP/0730	EAST CAMP/1930
GRD2 CORNELIUS E-942		06/05	JASON MERRITT	1	EAST CAMP/0730	EAST CAMP/1930
EXCA V# 500242 E-626		05/30			EAST CAMP/0730	EAST CAMP/1930
TDMP - VIN# 54083 E-624		05/28		1	EAST CAMP/0730	EAST CAMP/1930
TRUCK DUMP - VIN# 64094 E-625		05/30			EAST CAMP/0730	EAST CAMP/1930
TDMP CORNELIUS FARMS # 17006 E-879		05/31	EDGAR DIXON		EAST CAMP/0730	EAST CAMP/1930
TDMP CORNELIUS FARMS #633987 E-880		05/31	SAMMY HENDRIX	1	EAST CAMP/0730	EAST CAMP/1930
TDMP CORNELIUS E-937		06/04			EAST CAMP/0730	EAST CAMP/1930
8. Division/Group Communication Summary						
Function	Channel	RX Frequency N/W	RX Tone/NAC	TX Frequency N/W	TX Tone/NAC	Mode
COMMAND	3	159.1200N	NONE	151.3700N	82.5	A
AIR TO GROUND	4	169.2000N	NONE	169.2000N	NONE	A
TACTICAL	10	168.3500N	NONE	168.3500N	NONE	A
AIR TO GROUND	14	166.6750N	NONE	166.6750N	NONE	A
AIR TO GROUND	15	169.1500N	NONE	169.1500N	NONE	A
AIR GUARD	16	168.6250N	NONE	168.6250N	110.9	A
9. Prepared By (Resource Unit Leader)			Approved By (Planning Section Chief)		Date	Time
JEFF TURNER, RESL (T)			JOE BISHOP, PSC2 (T)		05/26/2017	1900

Division/Group Assignment List (ICS 204 WF)

1. Incident Name:			3.			
WEST MIMS			Branch:		Division/Group:	
2. Operational Period: DAY SHIFT 0730-1930			ROAD MAINT		EAST	
Date/Time From: 05/27/2017 0730 SAT		Date/Time To: 05/27/2017 1930 SAT				
4. Operations Personnel						
PLANNING OPERATIONS CHIEF		TRENT INGRAM PHIL DANIELS (T)		OPERATIONS CHIEF		RICK DOLAN FRED BOEHM, BRYCE THOMAS (T)
BRANCH DIRECTOR		BOB LITTLE		DIVISION/GROUP SUPERVISOR		KRIS CRODDY
SAFETY		LARRY CONNELL		AIR TACTICAL GROUP SUPERVISOR		MARK NUNEZ KEN MCLAUGHLIN
5. Resources Assigned this Period						
Strike Team / Task Force / Resource Designator		LWD	Leader	Number Persons	Drop Off PT./Time	Pick Up PT./Time
TDMP CORNELIUS E-938		06/04			EAST CAMP/0730	EAST CAMP/1930
TDMP CORNELIUS E-939					EAST CAMP/0730	EAST CAMP/1930
TDMP CORNELIUS E-940		06/05			EAST CAMP/0730	EAST CAMP/1930
TFLD O-650		05/30	JAMES SPARROW	1	EAST CAMP/0730	EAST CAMP/1930
HEQB O-646		05/29	CHAD TUSS	1	EAST CAMP/0730	EAST CAMP/1930
6. Control Operations/Work Assignments:						
Task						
<ul style="list-style-type: none"> • Assess access roads to fire perimeter; repair or maintain as necessary in accordance with priority list provided by Operations Section Chief. • Provide adequate signage for traffic safety. • Assess single lane bridges and culverts for safety and maintenance needs. 						
Purpose						
<ul style="list-style-type: none"> • To keep adequate vehicular access to the fire perimeter. 						
End State						
<ul style="list-style-type: none"> • Access roads are in a safe and travel worthy condition. 						
7. Special Instructions:						
Check in and out with Division Supervisor when moving between divisions.						
Medical Emergency Channel: Command ETA for Ambulance to Scene: Air: 20-30 mins						
8. Division/Group Communication Summary						
Function	Channel	RX Frequency N/W	RX Tone/NAC	TX Frequency N/W	TX Tone/NAC	Mode
COMMAND	3	159.1200N	NONE	151.3700N	82.5	A
AIR TO GROUND	4	169.2000N	NONE	169.2000N	NONE	A
TACTICAL	10	168.3500N	NONE	168.3500N	NONE	A
AIR TO GROUND	14	166.6750N	NONE	166.6750N	NONE	A
AIR TO GROUND	15	169.1500N	NONE	169.1500N	NONE	A
AIR GUARD	16	168.6250N	NONE	168.6250N	110.9	A
9. Prepared By (Resource Unit Leader)			Approved By (Planning Section Chief)		Date	Time
JEFF TURNER, RESL (T)			JOE BISHOP, PSC2 (T)		05/26/2017	1900

Division/Group Assignment List (ICS 204 WF)

1. Incident Name:			3.			
WEST MIMS			ROAD MAINT	Division/Group: EAST		
2. Operational Period: DAY SHIFT 0730-1930						
Date/Time From:	05/27/2017 0730	SAT	Date/Time To:	05/27/2017 1930	SAT	
4. Operations Personnel						
PLANNING OPERATIONS CHIEF	TRENT INGRAM PHIL DANIELS (T)		OPERATIONS CHIEF	RICK DOLAN FRED BOEHM, BRYCE THOMAS (T)		
BRANCH DIRECTOR	BOB LITTLE		DIVISION/GROUP SUPERVISOR	KRIS CRODDY		
SAFETY	LARRY CONNELL		AIR TACTICAL GROUP SUPERVISOR	MARK NUNEZ KEN MCLAUGHLIN		
7. Special Instructions:						
<p>Ground: 10-15 mins Paved road only. IWI - IC or approved person will use Channel 16 (Air Guard) for contact with air ambulance. Air Ambulance landing zone to be determined by IWI - IC. Utilize engines to provide dust abatement, as needed, prior to air ambulance landing.</p>						
8. Division/Group Communication Summary						
Function	Channel	RX Frequency N/W	RX Tone/NAC	TX Frequency N/W	TX Tone/NAC	Mode
COMMAND	3	159.1200N	NONE	151.3700N	82.5	A
AIR TO GROUND	4	169.2000N	NONE	169.2000N	NONE	A
TACTICAL	10	168.3500N	NONE	168.3500N	NONE	A
AIR TO GROUND	14	166.6750N	NONE	166.6750N	NONE	A
AIR TO GROUND	15	169.1500N	NONE	169.1500N	NONE	A
AIR GUARD	16	168.6250N	NONE	168.6250N	110.9	A
9. Prepared By (Resource Unit Leader)			Approved By (Planning Section Chief)		Date	Time
JEFF TURNER, RESL (T)			JOE BISHOP, PSC2 (T)		05/26/2017	1900

Division/Group Assignment List (ICS 204 WF)

1. Incident Name:			3.			
WEST MIMS			ROAD MAINT		Division/Group: SOUTH	
2. Operational Period: DAY SHIFT 0730-1930						
Date/Time From: 05/27/2017 0730 SAT		Date/Time To: 05/27/2017 1930 SAT				
4. Operations Personnel						
PLANNING OPERATIONS CHIEF		TRENT INGRAM PHIL DANIELS (T)		OPERATIONS CHIEF		RICK DOLAN FRED BOEHM, BRYCE THOMAS (T)
BRANCH DIRECTOR		BOB LITTLE		DIVISION/GROUP SUPERVISOR		ANDREW BRANSON
SAFETY		LARRY GRUBBS CLAY STEPHENS (T)		AIR TACTICAL GROUP SUPERVISOR		MARK NUNEZ KEN MCLAUGHLIN
5. Resources Assigned this Period						
Strike Team / Task Force / Resource Designator		LWD	Leader	Number Persons	Drop Off PT./Time	Pick Up PT./Time
TFLD O-654		05/31	JOSH CANTRELL	1	EAST CAMP/0730	EAST CAMP/1930
HEQB O-599		06/01	MARK BASS	1	EAST CAMP/0730	EAST CAMP/1930
GRD2 - WFS 6198TE E-136		06/04	JUSTIN BARBER	1	EAST CAMP/0730	EAST CAMP/1930
HEQB O-600		05/29	SHANE FEIGHTNER	1	EAST CAMP/0730	EAST CAMP/1930
GRD2 - CORNELIUS FARMS E-941		05/31	ALEX CORNELIUS	1	EAST CAMP/0730	EAST CAMP/1930
SOF2 O-586		05/27	PHILLIP YOUNG	1	EAST CAMP/0730	EAST CAMP/1930
WTS2 -AZ-DSY #146 E-643		05/30	RANDY KENNEDY	1	EAST CAMP/0730	EAST CAMP/1930
TFLD O-615		05/29	CHAD D STOVER	1	EAST CAMP/0730	EAST CAMP/1930
EXCAVATOR T3 - VIN# GXHFE E-622		06/08	BUCK TODDENBERRY	1	EAST CAMP/0730	EAST CAMP/1930
DOZER T3 - VIN# 302873 E-623		06/08	KELLY PITTMAN	1	EAST CAMP/0730	EAST CAMP/1930
8. Division/Group Communication Summary						
Function	Channel	RX Frequency N/W	RX Tone/NAC	TX Frequency N/W	TX Tone/NAC	Mode
COMMAND	8	159.2700N	156.7	151.1000N	123.0	A
AIR TO GROUND	4	169.2000N	NONE	169.2000N	NONE	A
TACTICAL	10	168.3500N	NONE	168.3500N	NONE	A
AIR TO GROUND	14	166.6750N	NONE	166.6750N	NONE	A
AIR TO GROUND	15	169.1500N	NONE	169.1500N	NONE	A
AIR GUARD	16	168.6250N	NONE	168.6250N	110.9	A
9. Prepared By (Resource Unit Leader)			Approved By (Planning Section Chief)		Date	Time
JEFF TURNER, RESL (T)			JOE BISHOP, PSC2 (T)		05/26/2017	1900

Division/Group Assignment List (ICS 204 WF)

1. Incident Name:			3.			
WEST MIMS			Branch:		Division/Group:	
2. Operational Period: DAY SHIFT 0730-1930			ROAD MAINT		SOUTH	
Date/Time From: 05/27/2017 0730 SAT		Date/Time To: 05/27/2017 1930 SAT				
4. Operations Personnel						
PLANNING OPERATIONS CHIEF		TRENT INGRAM PHIL DANIELS (T)		OPERATIONS CHIEF		
				RICK DOLAN FRED BOEHM, BRYCE THOMAS (T)		
BRANCH DIRECTOR		BOB LITTLE		DIVISION/GROUP SUPERVISOR		
				ANDREW BRANSON		
SAFETY		LARRY GRUBBS CLAY STEPHENS (T)		AIR TACTICAL GROUP SUPERVISOR		
				MARK NUNEZ KEN MCLAUGHLIN		
6. Control Operations/Work Assignments:						
Task						
<ul style="list-style-type: none"> • Assess access roads to fire perimeter; repair or maintain as necessary in accordance with priority list provided by Operations Section Chief. • Provide adequate signage for traffic safety. • Assess single lane bridges and culverts for safety and maintenance needs. 						
Purpose						
<ul style="list-style-type: none"> • To keep adequate vehicular access to the fire perimeter. 						
End State						
<ul style="list-style-type: none"> • Access roads are in a safe and travel worthy condition. 						
7. Special Instructions:						
Check in and out with Division Supervisor when moving between divisions.						
Medical Emergency Channel: Command						
ETA for Ambulance to Scene:						
Air: 20-30 mins						
Ground: 10-15 mins Paved road only.						
IWI - IC or approved person will use Channel 16 (Air Guard) for contact with air ambulance.						
Air Ambulance landing zone to be determined by IWI - IC.						
Utilize engines to provide dust abatement, as needed, prior to air ambulance landing.						
8. Division/Group Communication Summary						
Function	Channel	RX Frequency N/W	RX Tone/NAC	TX Frequency N/W	TX Tone/NAC	Mode
COMMAND	8	159.2700N	156.7	151.1000N	123.0	A
AIR TO GROUND	4	169.2000N	NONE	169.2000N	NONE	A
TACTICAL	10	168.3500N	NONE	168.3500N	NONE	A
AIR TO GROUND	14	166.6750N	NONE	166.6750N	NONE	A
AIR TO GROUND	15	169.1500N	NONE	169.1500N	NONE	A
AIR GUARD	16	168.6250N	NONE	168.6250N	110.9	A
9. Prepared By (Resource Unit Leader)			Approved By (Planning Section Chief)		Date	Time
JEFF TURNER, RESL (T)			JOE BISHOP, PSC2 (T)		05/26/2017	1900

Division/Group Assignment List (ICS 204 WF)

1. Incident Name:			3.			
WEST MIMS			Branch:		Division/Group:	
2. Operational Period: DAY SHIFT 0730-1930			ROAD MAINT		WEST	
Date/Time From: 05/27/2017 0730 SAT		Date/Time To: 05/27/2017 1930 SAT				
4. Operations Personnel						
PLANNING OPERATIONS CHIEF		TRENT INGRAM PHIL DANIELS (T)		OPERATIONS CHIEF		
BRANCH DIRECTOR		BOB LITTLE		DIVISION/GROUP SUPERVISOR		
SAFETY		LARRY GRUBBS CLAY STEPHENS (T)		AIR TACTICAL GROUP SUPERVISOR		
				RICK DOLAN BUCK KLINE		
				DAVID SMITH, CANDICE KUTROSKY JASON LAGO (T)		
				MARK NUNEZ KEN MCLAUGHLIN		
5. Resources Assigned this Period						
Strike Team / Task Force / Resource Designator		LWD	Leader	Number Persons	Drop Off PT./Time	Pick Up PT./Time
STEQ O-603		05/28	JAMES LICO	1	ICP/0730	ICP/1930
HEQB O-647		05/30	BRANDON CREECH	1	ICP/0730	ICP/1930
GRD2 - MOORE'S - E-641		05/29	ERIC MOORE	1	ICP/0730	ICP/1930
HEQB O-687		05/31	RUDY MEDRANO	1	ICP/0730	ICP/1930
GRD1 - VIN# 625863 E-866		06/14	BRIAN JENKINS	1	ICP/0730	ICP/1930
HEQB O-688		05/31	GENE PHILLPS	1	ICP/0730	ICP/1930
DOZ2 - TIPTON & YOUNG E-506		06/04	ETHAN TIPTON	2	ICP/0730	ICP/1930
HEQB O-631		06/03	SCOTT BURGHARDT	1	ICP/0730	ICP/1930
TPL2 TIPTON & YOUNG E-509		05/23		1	ICP/0730	ICP/1930
8. Division/Group Communication Summary						
Function	Channel	RX Frequency N/W	RX Tone/NAC	TX Frequency N/W	TX Tone/NAC	Mode
COMMAND	7	159.2700N	156.7	151.1000N	100.0	A
AIR TO GROUND	4	169.2000N	NONE	169.2000N	NONE	A
TACTICAL	10	168.3500N	NONE	168.3500N	NONE	A
AIR TO GROUND	14	166.6750N	NONE	166.6750N	NONE	A
AIR TO GROUND	15	169.1500N	NONE	169.1500N	NONE	A
AIR GUARD	16	168.6250N	NONE	168.6250N	110.9	A
9. Prepared By (Resource Unit Leader)			Approved By (Planning Section Chief)		Date	Time
JEFF TURNER, RESL (T)			JOE BISHOP, PSC2 (T)		05/26/2017	1900

Division/Group Assignment List (ICS 204 WF)

1. Incident Name:			3.			
WEST MIMS			ROAD MAINT	Division/Group: WEST		
2. Operational Period: DAY SHIFT 0730-1930						
Date/Time From: 05/27/2017 0730	SAT	Date/Time To: 05/27/2017 1930				
4. Operations Personnel						
PLANNING OPERATIONS CHIEF		TRENT INGRAM PHIL DANIELS (T)	OPERATIONS CHIEF		RICK DOLAN BUCK KLINE	
BRANCH DIRECTOR		BOB LITTLE	DIVISION/GROUP SUPERVISOR		DAVID SMITH, CANDICE KUTROSKY JASON LAGO (T)	
SAFETY		LARRY GRUBBS CLAY STEPHENS (T)	AIR TACTICAL GROUP SUPERVISOR		MARK NUNEZ KEN MCLAUGHLIN	
6. Control Operations/Work Assignments:						
Task						
<ul style="list-style-type: none"> • Assess access roads to fire perimeter; repair or maintain as necessary in accordance with priority list provided by Operations Section Chief. • Provide adequate signage for traffic safety. • Assess single lane bridges and culverts for safety and maintenance needs. 						
Purpose						
<ul style="list-style-type: none"> • To keep adequate vehicular access to the fire perimeter. 						
End State						
<ul style="list-style-type: none"> • Access roads are in a safe and travel worthy condition. 						
7. Special Instructions:						
Check in and out with Division Supervisor when moving between divisions.						
Medical Emergency Channel: Command ETA for Ambulance to Scene: Air: 20-30 mins Ground: 10-15 mins Paved road only. IWI - IC or approved person will use Channel 16 (Air Guard) for contact with air ambulance. Air Ambulance landing zone to be determined by IWI - IC. Utilize engines to provide dust abatement, as needed, prior to air ambulance landing.						
8. Division/Group Communication Summary						
Function	Channel	RX Frequency N/W	RX Tone/NAC	TX Frequency N/W	TX Tone/NAC	Mode
COMMAND	7	159.2700N	156.7	151.1000N	100.0	A
AIR TO GROUND	4	169.2000N	NONE	169.2000N	NONE	A
TACTICAL	10	168.3500N	NONE	168.3500N	NONE	A
AIR TO GROUND	14	166.6750N	NONE	166.6750N	NONE	A
AIR TO GROUND	15	169.1500N	NONE	169.1500N	NONE	A
AIR GUARD	16	168.6250N	NONE	168.6250N	110.9	A
9. Prepared By (Resource Unit Leader)			Approved By (Planning Section Chief)		Date	Time
JEFF TURNER, RESL (T)			JOE BISHOP, PSC2 (T)		05/26/2017	1900

AIR OPERATIONS SUMMARY (ICS220)

Prepared by: John Bragg

Prepared Date: 5/26/2017

Prepared Time: 17:00

1. INCIDENT NAME: West Mims	2. OPS PERIOD DATE: 5/27/17	START TIME: 0600	END TIME: 1900	SUNRISE: 0627	SUNSET TIME: 2023 (Folkston)
3. REMARKS Safety Notes: Hazards (SEE AND AVOID GENERAL AVIATION TRAFFIC AND AERIAL HAZARDS) -Maintain clear communications; confirm that drop location is clear; ground personnel state: "Clear to Drop" -Incident Aircraft conduct flight following with Pogo Helibase when ATGS is not up. -Aerial Ignition Group: Helicopter 1FW with PLDO; FIRB, Jon King. -CEASE ALL FIRE OPERATIONS AT SUNSET -ALL AIRCRAFT SQUAWK 1255 ORDERING/FLIGHT REQUESTS -Request Helicopter water drops through Air Attack -Request Tankers/Retardant through Air Attack -Requests for Reconnaissance missions must go through Operations for pre-approval E-MAIL AIRCRAFT COSTS DAILY AT END OF SHIFT TO: al_d2011@yahoo.com			4. READY ALERT AIRCRAFT: N-132BH N-351FW		5. TFR: (A-160) 7/1205; Surface to 3500' MSL; See NOTAM for full description. Frequency 120.8500 Expires 6/06/17 @ 2100hrs.

6. PERSONNEL	NAME	PHONE #	7. FREQUENCIES	AM	FM	8. FIXED-WING- Type/ Make-Model/ N#/ Base
AOBD	John Bragg	423-483-2798	A/A - Fixed Wing (A-17)	120.3500		AIR ATTACK: ATGS – Mark Nunez / AC690 / N690RA / LCQ 805-975-5227 ATGS – Ken McLaughlin / Kodiak / N420Q / LCQ 813-997-0317
	Air Ops Desk	912-637-5133	A/A - Rotor / TFR (A-37)	120.8500		
			A/G (Request) (A-111)		169.2000	
			A/G 66 (Primary) (A-5)		166.6750	
			A/G 72 (Secondary) (A-16)		169.1500	
ASGS	Al Driesbach	805-703-0649				LEAD
HEB2 - Pogo	Marc 'Boomer' Rudkin	307-287-0440	Deck/TOLC (Pogo)		168.0500	TANKERS – As available (T-02) BAE146 / N474NA / LCQ (Off Mondays) (T-164) RJ-85A / N374AC / LCQ (Off Thursdays)
HEB2(T) - Pogo	David Aldrich	520-490-8638	Deck (Lake City)		163.100	
HEB1 - Lake City	Brad Nelson	559-349-6793				
	Pogo Helibase	912-496-4415				
	Lake City Helibase	561-512-6333	Air Guard		168.625 (110.9)	

9. HELICOPTER Remarks Box Legend: C=Cargo P=Passengers B=Bucket SN=Snorkel R=Rappel H=Hoist SH=Short Haul ME=Medical Evacuation/ Extraction Exu=Exclusive Use

FAA N#	T Y	MAKE/ MODEL	BASE	START	READY to FLY	REMARKS	FAA N#	T Y	MAKE/ MODEL	BASE	START	READY to FLY	REMARKS
132BH	3	AS350 B3	Pogo (3GE1)	0800	0830	P, B Exu	13FH	1	UH-60A	Lake City (LCQ)	0800	0830	B Exu
351FW	3	AS350 B2	Pogo (3GE1)	0600	0630	P, B Exu	612CK (702)	1	SH-3H / S-61	Lake City (LCQ)	0800	0830	SN * <u>On Loan</u>
471CH	1	CH-47D	Lake City (LCQ)	0800	0830	SN Exu	137BH	1	S70A-27	Lake City (LCQ)	0800	0830	B * <u>On Loan</u>
611CK	1	SH-3H / S-61	Lake City (LCQ)	0800	0830	SN Exu	472CH	1	CH-47D	Lake City (LCQ)	0800	0830	SN * <u>On Loan</u>

10. Mission Request

1. 0630 I.R. Recon 2px (Pogo);	2. 0900 Recon 3px (Pogo);	3. 1200 Recon 2px (Fargo);	4. 1400 Recon 2px (Pogo);	5. 1400 Recon 1px (Pogo);	6. Water drops as needed
--------------------------------	---------------------------	----------------------------	---------------------------	---------------------------	--------------------------

INCIDENT RADIO COMMUNICATIONS PLAN (ICS 205)

1. Incident Name:	2. Date/Time Prepared:	3. Operational Period: DAY SHIFT 0730-1930	
WEST MIMS	Date: 05/26/2017 Time: 1730	Date/Time From: 05/27/2017 0730 SAT	Date/Time To: 05/27/2017 1930 SAT

4. Basic Radio Channel Use:

Zone Group	Ch #	Function	Channel Name/Trunked Radio System Talkgroup	Assignment	RX Freq	RX Tone/NAC	TX Freq	TX Tone/NAC	Mode (A,D, or M)	Remarks
1 WEST	1	COMMAND	WEST OKEE REP		167.1250N	156.7	163.1500N	156.7	M	STEPHEN FOSTER STATE PARK
1 WEST	2	COMMAND	S. FOSTER	DIV D	159.1200N	NONE	151.3700N	100.0	A	WEST ROAD MAINTENANCE FL FFS CONTINGENCY
1 EAST	3	COMMAND	CORNELIA		159.1200N	NONE	151.3700N	82.5	A	
1 ALL DIVISIONS	4	AIR TO GROUND	A/G REQUEST	ALL DIVISIONS	169.2000N	NONE	169.2000N	NONE	A	
1	5	COMMAND	GFC EDDY	GA FORESTRY	159.4650N	NONE	151.1450N	123.0	A	GA FORESTRY ONLY
1	6	TACTICAL	GFC TAC 1	WEST ROAD MAINT	159.3900N	NONE	159.3900N	156.7	A	FL FFS CONTINGENCY
1	7	TACTICAL	V FIRE 26		154.3025N	NONE	154.3025N	156.7	A	
1	8	TACTICAL	OSCEOLA PROJECT		163.7125N	NONE	163.7125N	NONE	A	
1	9	TACTICAL	SE COMPACT		159.2850N	NONE	159.2850N	156.7	A	
1	10	TACTICAL	REFUGE TAC 1		168.3500N	NONE	168.3500N	NONE	A	
1	11	TACTICAL	REFUGE TAC 2		163.1000N	NONE	163.1000N	NONE	A	
1	12	TACTICAL	FFS 199		159.4425N	NONE	159.4425N	NONE	A	
1 WEST	13	TACTICAL	FFS 200	DIV D	159.4125N	NONE	159.4125N	NONE	A	
1 ALL DIVISIONS	14	AIR TO GROUND	AIR TO GRD 66	A/G PRIMARY	166.6750N	NONE	166.6750N	NONE	A	AIR TO GROUND PRIMARY
1 ALL DIVISIONS	15	AIR TO GROUND	AIR TO GRD 72	A/G SECONDARY	169.1500N	NONE	169.1500N	NONE	A	AIR / GROUND SECONDARY
1 ALL DIVISIONS	16	AIR GUARD	AIR GUARD	ALL DIVISIONS	168.6250N	NONE	168.6250N	110.9	A	EMERGENCY AIRCRAFT COMMUNICATIONS

5. Special Instructions:

6. Prepared By (Communications Unit Leader)	Name: CHUCK RADCLIFF, COML	Signature:
ICS 205	IAP Page	Date/Time: 05/26/2017 1730

INCIDENT RADIO COMMUNICATIONS PLAN (ICS 205)

1. Incident Name:	2. Date/Time Prepared:	3. Operational Period: DAY SHIFT 0730-1930	
WEST MIMS	Date: 05/26/2017 Time: 1730	Date/Time From: 05/27/2017 0730 SAT	Date/Time To: 05/27/2017 1930 SAT

4. Basic Radio Channel Use:

Zone Group	Ch #	Function	Channel Name/Trunked Radio System Talkgroup	Assignment	RX Freq	RX Tone/NAC	TX Freq	TX Tone/NAC	Mode (A,D, or M)	Remarks
2	1	TACTICAL	V FIRE 21	INITIAL ATTACK	154.2800N	NONE	154.2800N		A	INITIAL ATTACK W/ OSCEOLA NF
2 WEST	2	COMMAND	S. FOSTER		159.1200N	NONE	151.3700N	100.0	A	
2 EAST	3	COMMAND	CORNELIA	DIV M/N,O	159.1200N	NONE	151.3700N	82.5	A	STAGING, ROAD MAINT EAST
2 ALL DIVISIONS	4	AIR TO GROUND	A/G REQUEST	ALL DIVISIONS	169.2000N	NONE	169.2000N	NONE	A	BY REQUEST ONLY
2	5	COMMAND	GFC EDDY	GA FORESTRY	159.4650N	NONE	151.1450N	123.0	A	GA FORESTRY ONLY
2 EAST	6	COMMAND	GA BEND	UNASSIGNED	159.2700N	156.7	151.1000N	156.7	A	
2 NORTH	7	COMMAND	FARGO RPT	DIV F	159.2700N	156.7	151.1000N	100.0	A	IA WEST, IA EAST, ROAD MAINT WEST
2 SOUTH	8	COMMAND	BAKER RPT	DIV A, B, C, Y, Z	159.2700N	156.7	151.1000N	123.0	A	IA WEST, IA EAST, ROAD MAINTENANCE SOUTH
2	9	TACTICAL	COMPACT	DIV C, M/N, Y	159.2850N	NONE	159.2850N	156.7	A	
2	10	TACTICAL	REFUGE TAC 1	STAGING	168.3500N	NONE	168.3500N	NONE	A	DIV Z, ROAD MAINT EAST, WEST, SOUTH
2	11	TACTICAL	OSCEOLA PROJECT	DIV O, IA WEST	163.7125N	NONE	163.7125N	NONE	A	
2	12	TACTICAL	FFS 199	DIV A, IA EAST	159.4425N	NONE	159.4425N	NONE	A	
2	13	TACTICAL	FFS 200	DIV B, DIV F	159.4125N	NONE	159.4125N	NONE	A	
2 ALL DIVISIONS	14	AIR TO GROUND	AIR TO GRD 66	A/G PRIMARY	166.6750N	NONE	166.6750N	NONE	A	AIR / GROUND PRIMARY
2 ALL DIVISIONS	15	AIR TO GROUND	AIR TO GRD 72	A/G SECONDARY	169.1500N	NONE	169.1500N	NONE	A	AIR / GROUND SECONDARY
2 ALL DIVISIONS	16	AIR GUARD	AIR GUARD	ALL DIVISIONS	168.6250N	NONE	168.6250N	110.9	A	EMERGENCY AIRCRAFT COMMUNICATIONS

5. Special Instructions:

WEST MIMS DAY PLAN

6. Prepared By (Communications Unit Leader)	Name: CHUCK RADCLIFF, COML	Signature:
ICS 205	IAP Page	Date/Time: 05/26/2017 1730

PHONE LIST - WEST MIMS FIRE

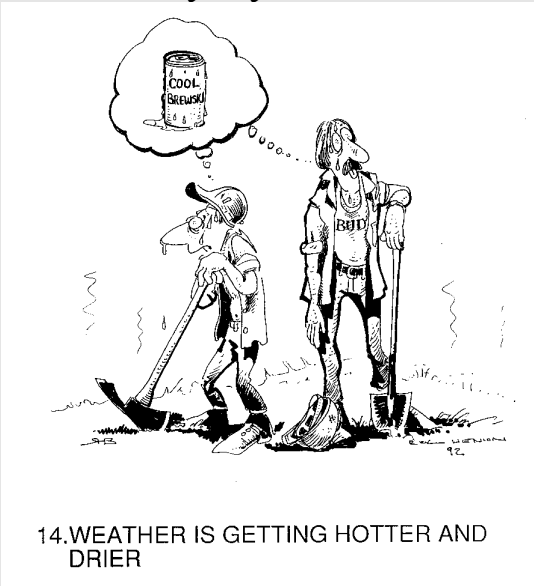
Position	Name	Phone Number	Position	Name	Phone Number
UNIFIED COMMAND			Finance	General	912-637-5109
NIMO IC	Mike Quesinberry	540-230-1262	NIMO Fin Chief	Carla Schamber	202-631-2254
Southern States IC (t)	Keith Mousel	352-442-2891	Fin Chief	Betty Palmiotto	850-408-6564
Southern States IC	Sam LeNeave	850-228-7778	Dep Fin Chief	Dawn Croch	352-206-5634
Liason Officer	Daniel Stanley	850-661-1674	Comp/Claims	Brett Steffen	229-561-4378
Liason Officer	Mark Allen Dozier	478-251-4015	Procurement	Tommy Price	863-661-4019
Liason Officer	Paul Stevens	252-216-6316	Time	Marci Glover	850-373-8254
Human Resources	Larry Sandoval	229-561-3477			
PUBLIC INFORMATION	Land Line	912-637-5108	Telephone lines at ICP		
Information Desk		904-452-4627	Information/PIO		912-637-5132
NIMO Public Information	Judith Downing	530-908-5128	Information		912-637-5108
Public Information	Annaleasa Winter	904-705-3931	Air Ops		912-637-5133
Refuge Public Info	Susie Heisey	912-286-3110	Ordering		912-637-5107
AGENCY REPRESENTATIVES			Ordering		912-637-5136
Refuge FMO	Reese Kerbow	912-276-0167	Ordering Fax		912-637-5104
Refuge AFMO	Reggie Forcine	912-614-4041	Supply		912-637-5138
Refuge Manager	Mike Lusk	912-390-2193	Ground Support		912-637-5105
DNR Agency Liaison	SGT. Patrick Dupree	404-694-5596	Finance		912-637-5109
Ware Co EMA	Bill Parham	229-425-4549	Finance Fax		912-637-5110
Clinch Co EMA	Will Joyce	912-520-8581	Operations		912-637-5112
Lanier Co EMA	Randy Patten	229-482-5070	Plans FAX		912-637-5115
Charlton Co EMA	Bruce Young	912-390-2022	Plans / Checkin		912-637-5137
Charlton Co Sheriff's Office	Inv. Clay Burnsel	912-276-2628	Demob		912-637-5113
Georgia EMA	Kristen Higgs	912-387-5490	Communications		912-637-5116
NC-Forest Service	Robbie Perry	910-995-2572	Telephone lines at Eastside Camp		
Billy Estep	EMS Dir/Nassau Coun	904-813-3476	Operations		912-496-2278
Baker Co EMA	Beck Parker	904-955-6454	Supply		912-496-3116
Columbia Co S.O.	Shayne Morgan	386-693-2248	Communications		912-496-2293
Clinch CO Fire Chief	Danny Strickland	912-487-6493	Medical		912-496-2289
PLANNING			LAND OWNERS AND OTHER CONTACTS		
NIMO PSC	Darrel Schwilling	404-805-3159	Steve Davis	Am Forest Mgmt	912-614-1828
PSC ICP	Duane Durgee	352-278-0446	Allen C. Cross	Rayonier US Forest	904-796-7929
PSC Eastside Camp	Joe Bishop	352-516-9767	Dave Gather	Okie Electric	912-390-9755
Fire Behavior Analyst	Bradley Smith	470-366-6313	Chad Edwards	N Fork Southern RR	540-797-9918
Fire Behavior Analyst(t)	Andrew Taylor	541-219-1205	Bryan Robbins	CSX RR	912-387-3910
IMET	Scott Kennedy	252-269-9497	Steve Magnolia	FD Coordinator	904-537-5853
THSP-ARA	Sean Luchs	240-499-6654	Terri Jenkins	FWS FD/VFD Contact	912-313-4225
READ	Rocky Chesser	912-276-3232	Ned Neenan	Legacy Forestry	352-317-0738
FWS READ	Howard McCllough	912-276-0552	Ken Zaydel	Social Circle FD	404-205-2738
RESL	Shawn Stewart	352-428-7453	Royce Proctor	OKE Electric Coop	912-282-6873
RESL (t)	Jeff Turner	865-684-0093		Okefenokee NWR	912-496-7366
SITL	Scott Crosby	352-275-4332	Adam McCullough	NWR IA Duty Off	912-496-4177
SITL	Stuart Coombs	470-366-6309	SFSP	Bryan Grey	912-637-5274
SITL	Stuart Coombs	936-827-4233	GOAL	Jim Barrett	229-356-1993
GISS	Clint Roberts	601-408-4226	SOPL	Mark Hale	406-861-4876
GISS	Domonic Marcanio	850-380-1656	LTAN (t)	Wesley Hall	575-973-0726
Training Specialist	David Hunt	863-221-6146			Ver 27May17

PHONE LIST WEST MIMS FIRE

Position	Name	Phone Number	Position	Name	Phone Number
OPERATIONS	Land Line	912-637-5112	SAFETY		
NIMO Ops	Kyle Smith	540-855-0233	NIMO Safety Officer	Gene Madden	404-805-7970
Lead Ops	Rick Dolan	352-353-5101	Safety Officer	Larry Grubbs	850-228-7755
West Field Lead Ops	Buck Kline	912-678-2694	Safety Officer	Larry Connell	352-303-3921
East Field Lead Ops	Fred Boehm	954-347-8071	Safety Officer (t)	Clay Stephens	702-575-0392
Planning Ops	Trent Ingram	229-726-0285	LOGISTICS		
Planning Ops (t)	Phil Daniels	720-315-4240	NIMO Logistics Chief	Sally Browning	404-805-5063
Branch I	Lance Delgado	541-639-2610	Logistics Chief East Camp	Jim Peters	352-942-7218
Division B	Jerry Van Dyme	503-580-8130	Logistics Section Chief (t)	David McVay	850-625-5142
Division C	Chris Roberts	912-213-3138	Facilities Unit Leader	Dennis Evans	478-957-9709
Division D	Walter Bowers	850-625-6630	Supply Unit Leader	Travis Shidal	
Division F	Jason Forthofer	406-207-5587	East Camp Grd Support	Douglas Crocker	352-235-2352
Division F	Jeff Coburn (t)	541-207-4066	Ground Spt Unit Ldr	Charles Weathers (nights)	
IA Group East	Greg Buckalew	252-475-8012	Ground Spt Unit Ldr	Mike Stigler	386-837-2289
IA Group (t)	Arturo Gasdik	707-834-8205	Ground Spt Unit Ldr	Glen Simmons	386-855-0379
Road Maint Group	Candice Kutrosky	719-651-0669	East Camp Grd Support	Mike Nelson	484-880-7494
Clinch EMS		229-569-9280	Ordering Manager	Mark McClellan	478-733-2606
Branch III	Marc Crain	503-307-9023	Food Unit Leader	Steve Marshall	352-464-2721
Division M/N	Karen Scholl	909-553-7731	Security Manager	Greg Blanks	912-346-7367
Division M/N (t)	Chris Rankin	307-359-1997	Medical Unit Leader	Steve Russo	917-923-3980
Division O	Shawn Alexander	678-897-9137	East Medical Unit Leader	Brad Burns	470-366-6318
Division O(t)	Michael Gue	305-338-6069	West Medical Unit Leader	Travis McGowen	470-532-8809
IA Group West	Ron Calhoun	478-290-9755	Communications Unit	24 Hour	912-637-5116
STAM Eastside Camp	Chris Rudd	541-660-0634	Communications Unit Ldr	Charles Radcliff	386-330-4162
Golden Isle EMS		229-300-0619	Communications Unit Ldr (t)	Paul Noa	850-276-5428
Branch IV	Steve Miller	386-937-0554	INCM	Gavin Walter	352-634-1174
Division A(t)	Jeff Bostwick	575-694-0280	East Camp Communications		470-366-6306
Division Y	Randy Gregory	850-519-3330	PLANNING		
Division Z	Jason Longfellow	386-212-9871	FOBS Lead	Lew Becker	541-815-2909
Refuge Advisor	Reggie Forcine	912-614-4041	FOBS	Brad Schuette	530-351-5306
Florida Contingency	Keith Osteen		FOBS	Reed Heckly	509-690-1242
FWS Contingency	Rocky Chesser	912-276-3232	FOBS	Evan Haugan	406-788-9983
FFS Contingency	John Raulerson	386-292-5652	FOBS	Brian Boatman	209-559-8184
FFS Contingency	Andy Lamborn	383-365-4441	FOBS	Jason Kanmann	775-815-8050
Okenfenokee EMS		912-288-5703	FOBS	Happy Hoppe	530-921-4431
STAM Bethea	Adam Dummer	831-238-0991	GISS	Brendan Mullholland	352-255-9094
Road Maint Branch	Bob Little	231-690-6426	ITSS	Randy Fountain	470-366-6310
West	David Smith	850-686-2970	ITSS	Dean Groe	470-366-6311
East	Chris Craddy	520-275-6747			
South	Andrew Branson	530-598-4126			
AIR OPERATIONS					
AOBD	John Bragg	423-483-2798			
ATGS	Ken McLaughlin	813-997-0317			
ATGS	Mark Nunez	805-975-5227			
ASGS	Al Driesback	805-703-0649			
HEB2-Pogo	Marc "Boomer" Rudkin	307-287-0440			
HEB1 - Lake City	Brad Nelson	559-349-6793			
Pogo Helibase (Hardline)		912-496-4415			
Lake City Helibase (Hardline)		561-512-6333			Ver 27May17

HEALTH AND SAFETY MESSAGE

Practice "Safety First" today because it may be too late to practice it tomorrow!

INCIDENT: West Mims Fire	DATE: Saturday, May 27, 2017
Major Hazards & Risks: Holiday Traffic, Increased Fire Behavior, Initial Attack	
<p>Holiday Traffic: <i>Holiday weekends mean an increase in the amount of vehicles on the road. They also increase the likelihood of drivers being distracted or impaired. Before you get on the road make sure you are focused on the task at hand, turn on your headlights, wear your seatbelts, and eliminate distractions.</i></p> <p>Increased Fire Behavior: <i>Fire behavior has been pretty minimal for the last several days, but now that the rains are over the weather is getting hotter and drier. The fire has the potential to stand up and make some runs. Be prepared to act swiftly and with purpose so you don't have to react with confusion.</i></p> <p>Initial Attack: <i>We had several lightning strikes from the last storm; couple that with the increased holiday traffic, the potential for new fire starts is high. If you are responding to a new start make sure you have LCES in place and are identifying and mitigating hazards before you engage. Pay special attention when working around heavy equipment in the timber!</i></p>	
<p>Stay Hydrated!</p>  <p>14.WEATHER IS GETTING HOTTER AND DRIER</p>	<p>Fire Order of the Day:</p> <p><u>Fight fire aggressively having provided for safety first.</u></p> <ul style="list-style-type: none">• <i>Risk Management - IRPG pg. 1</i>• <i>Common Denominators on Tragedy Fires - IRPG pg. 5</i>• <i>Safety Zones - IRPG pg. 8</i>• <i>Wildland Urban Interface Firefighting - IRPG pg. 12</i>

Southern Area State IMT Safety Officers: Larry, Larry, Gene, Clay(t)



Human Resource Message

Thought for Today

Remember, what is funny to you might not be funny to those around you.

Remember that someone will always be looking at you as an example of how to behave...don't let them down.

Remember to strive to become the most positive and enthusiastic person you know.

Remember that most of the things worth doing in the world has been declared impossible before they were done.

And lastly, early to bed and early to rise until you make enough money to do otherwise.

Incident: West Mims

Human Resource Specialist: Larry Sandoval

MEDICAL PLAN (ICS 206 WF)

1. Incident/Project Name			2. Operational Period					
West Mims Fire			Date/Time 5/27/17 0730 - 1930					
3. Ambulance Services								
Name	Complete Address		Phone		Advanced Life Support (ALS)			
					Yes	No		
Clinch County EMS	1050 Valdosta Hwy Homerville Ga		229-569-9280		YES			
Golden Isle EMS	210 West Park Ave. Valdosta Ga		229-300-0619		YES			
Okefenokee EMS	611 Riverside Ave. Waycross Ga		912-288-5703		YES			
4. Air Ambulance Services								
Name	Phone		Type of Aircraft & Capability					
Air Methods	888-763-1010		AS 350 with night vision capabilities					
Air Evac	888-269-6006		206 L1 + with night vision capabilities					
Trauma	800-223-4878		Bell 407 & EC153 both with night vision capabilities					
5. Hospitals								
Name Complete Address	GPS Datum – WGS 84 Coordinate Standard Degrees Decimal Minutes DD° MM.MMM' N - Lat DD° MM.MMM' W - Long		Travel Time Air Gnd		Phone	Helipad Yes No		Level of Care Facility
	Lat:	Long:						
Memorial Satilla Health 1900 Teveau St. Waycross GA 31501	N 31' 13.452	W 82' 20.875	15 mins	45 mins	912-283-3030	<input checked="" type="checkbox"/>	<input type="checkbox"/>	Level III
Clinch Memorial 1050 Valdosta Hwy Homerville Ga 31634	N 31' 01.975	W 82' 45.850	20 mins	30 mins	912-487-5211	<input checked="" type="checkbox"/>	<input type="checkbox"/>	Level IV
Ed Frazier Hospital N. 3 rd Street MacClenny Fl 32036	N 30' 28.482	W 82' 11.896	15 mins	45 mins	904-259-3151	<input checked="" type="checkbox"/>	<input type="checkbox"/>	Level IV
Shands Jacksonville 655 West 8 th Street Jacksonville Fl 32209	N 30' 20.890	W 81' 39.862	45 mins	90 mins	904-224-0411	<input checked="" type="checkbox"/>	<input type="checkbox"/>	Level I Trauma Center
UF Shands Burn Center 1600 SW Archer Rd. Gainesville Fl 32610	N 29' 38.648	W 82' 21.189	45 mins	105 mins	352-265-8932	<input checked="" type="checkbox"/>	<input type="checkbox"/>	Burn Center
IWI IC Responsibilities:								
<ul style="list-style-type: none"> -Take charge of the scene – inform the Division Supervisor and Communications that you are the IWI IC and establish radio communications -Assign or begin patient assessment (9 Line) and first aid. -Determine patient transportation through consultation with line medical personnel and Medical Unit Leader. -Order transportation resources through Communications as early as possible. -Notify Communications as resources arrive and any patient status changes. -Names of injured or deceased individuals will not be transmitted on the radio. -Initiate documentation for future investigation; if a line safety officer is available, assign them to lead documentation. -Conduct an After Action Review to determine successes, areas to improve and lessons learned 								

MEDICAL PLAN (ICS 206 WF)

6. Division Branch Group	
DAY MEDIC	
Division A - Martin Carrillo-EMPF	619-933-5546-Channel-8 COMMAND
Division B - Penny McDonagh-EMPF	470-366-6301-Channel-8-COMMAND
Division C - Colin Stenhouse EMPF	470-366-6308-Channel-8-COMMAND
Division D - Rodney Schmidt EMPF	470-366-6317-Channel-2-COMMAND
Division F - Lionel Van Gorp - EMPF	470-5328799-Channel-7-COMMAND
Division M/N - Stephen Wolfstich- EMPF	520-508-9807-Channel-3-COMMAND
Division M/N – Wade Allen - EMPF	928-240-0106-Channel-3-COMMAND
Division O Kyle Port - EMPF	602-410-6788-Channel-3-COMMAND
Division Y – Alyse Guiterriiz - EMPF	602-999-8011-Channel -8-COMMAND
Division Z – John Heck - EMPF	602-571-2505-Channel -8-COMMAND
Medical Station WEST	
MEDL office – Jill Hempelman- EMPF	623-986-1587
Medical Station EAST	
MEDL Station - Mike Fincham- EMPF	530-925-1267
Branch I	
Clinch County EMS Ambulance – ALS - 0730-1930	470-532-8806
Branch III	
Golden Isle Ambulance – ALS - 0730-1930	912-602-9224
Branch IV	
Okefenokee EMS Ambulance – ALS - 0730-1930	470-532-8797

7. Prepared By (Medical Unit Leader)	8. Date/Time	9. Reviewed By (Safety Officer)	10. Date/Time
Stephen Russo MEDL (917) 923 3980 West Medical Travis McGowen MEDL (T) 470-532-8809 East Medical Brad Burns MEDL (T) 470-366-6318	5/26/17	Larry Grubbs SOF1 850-228-7755	5/26/2017

Fire Information needs your photos to tell the story of the West Mims Fire.

Your photos tell the story best!

If you have an iPhone, there will be an information officer in attendance at each briefing that can collect your photos via AirDrop.

It takes second and will help us IMMENSELY!



AirDrop

If you do not have an iPhone, please send us your photos via email to:

OkeFirePIO@gmail.com

WEST MIMS FIRE RESTAURANT SERVICE
Friday, May 26, 2017
Breakfast \$11.00 Lunch \$12.00 Dinner \$23.00

Valdosta:

- Waffle House (S193) – 1819 W. Hill Dr., Valdosta, GA 31601 (229) 834-4907
- Mama Junes (S503) – 3286 Inner Perimeter Road, Valdosta, GA 31602 (229) 292-4491 (Hours: 1000-2130 Mon.-Sat., 1030-2000 Sun.)
- Cracker Barrel – 1195 St. Augustine Rd., Valdosta, GA (229) 244-5258 (6 a.m. - 10 p.m.)
- Sonny's BBQ -1701 Norman Dr., Valdosta, GA (229)241-8090 (Mon.-Thur. 11:00 a.m. - 9:30 p.m.) (Fri.-Sun. 11:00 a.m.-10.00 p.m.)
- Chick-Fil-A – 1100 N St. Augustine Rd., Valdosta, GA (229)247-2625 (Mon.-Sat. 6:00 a.m. - 10:00 p.m.) Closed on Sundays.

Fargo:

- Suwannee River Outfitters (S117) - P.O. Box 94 Fargo, Ga 31631 Store# (912) 637-5114 Bonnie Griffis (Owner) Cell# (229)460-6465 (6 a.m. – 8 p.m. Mon.-Sat., 6 a.m.- 3 p.m. Sun)
- Suwannee River Café (S118) - 190 Day Ave Fargo, GA 31631 Store# (912) 637-5307 Lorene Odom (Owner) (6 a.m. – 8 p.m. Mon.-Sat., closed Sun)

Lake City:

- Waffle House (S940) – 3639 W. US Hwy. 90 Lake City, FL 32055 Store# (385) 755-9066, Marilyn (Manager) (386) 344-2365
- Waffle House (S976) – 2963 W. US Hwy. 90 Lake City, FL 32055 Store# (386) 752-7742
- Huddle House (S1333) – Store# (386) 466-1144
- Sonny's BBQ – 3177 W. Hwy. 90, Lake City, FL 32055 (386) 752-1117
- Texas Roadhouse – 3039 W. Hwy. 90, Lake City, FL 32055 (386) 758-0074. (Sun.-Thur. 11:00 a.m.-10:00 pm)(Fri.-Sat. 11:00 a.m.-11:00 pm)

Kingsland:

- Waffle House (S951) – 1201 East Kind Avenue, Kingsland, GA 31548 Store # (912) 729-5690 Allen Newcomb (Manager) (770) 330-4446

Waycross:

- Huddle House (S977) - 1010 Memorial Drive Waycross, GA 31501 Store# (912) 490-4353
- Hog-n-Bones – 1000 Memorial Drive, Waycross, GA 31501 (912) 285-3657 (Mon. –Sat. 6:00 a.m.-9:00 p.m.) Closed Sundays.

Homerville:

- Jerry J's (S716) – 89 E. Dame Avenue, Homerville, Ga 31634 Store# (912) 487-2232 Richard Crosby (Owner) (912) 286-6720
- Carters Fried Chicken (S741) – 277 Lakeview Drive Homerville, GA 31634 Store# (312) 487-2700 Lena Fitzgerald (912) 487-8402 Jeff Brown (912) 487-8004

Folkston:

- Okefenokee Adventures (S593) – 4159 Suwannee Canal Rd., Folkston, GA 31537 Store# (912) 496-7156 (temporarily closed)
- Okefenokee Restaurant (S596) – 1507 3rd Street, Folkston, Ga 31537 Store# (912) 496-3263 (Mon.-Sat. 7:00 a.m.-9:00 p.m.) Closed Sundays.
- Quick Chick (S595) – 107 2nd Street, Folkston, GA 31537 Store# (912) 496-7044 (Mon.-Sat. 10:00 a.m.-8:30 p.m.) Closed Sundays.

Macclenny, Fl:

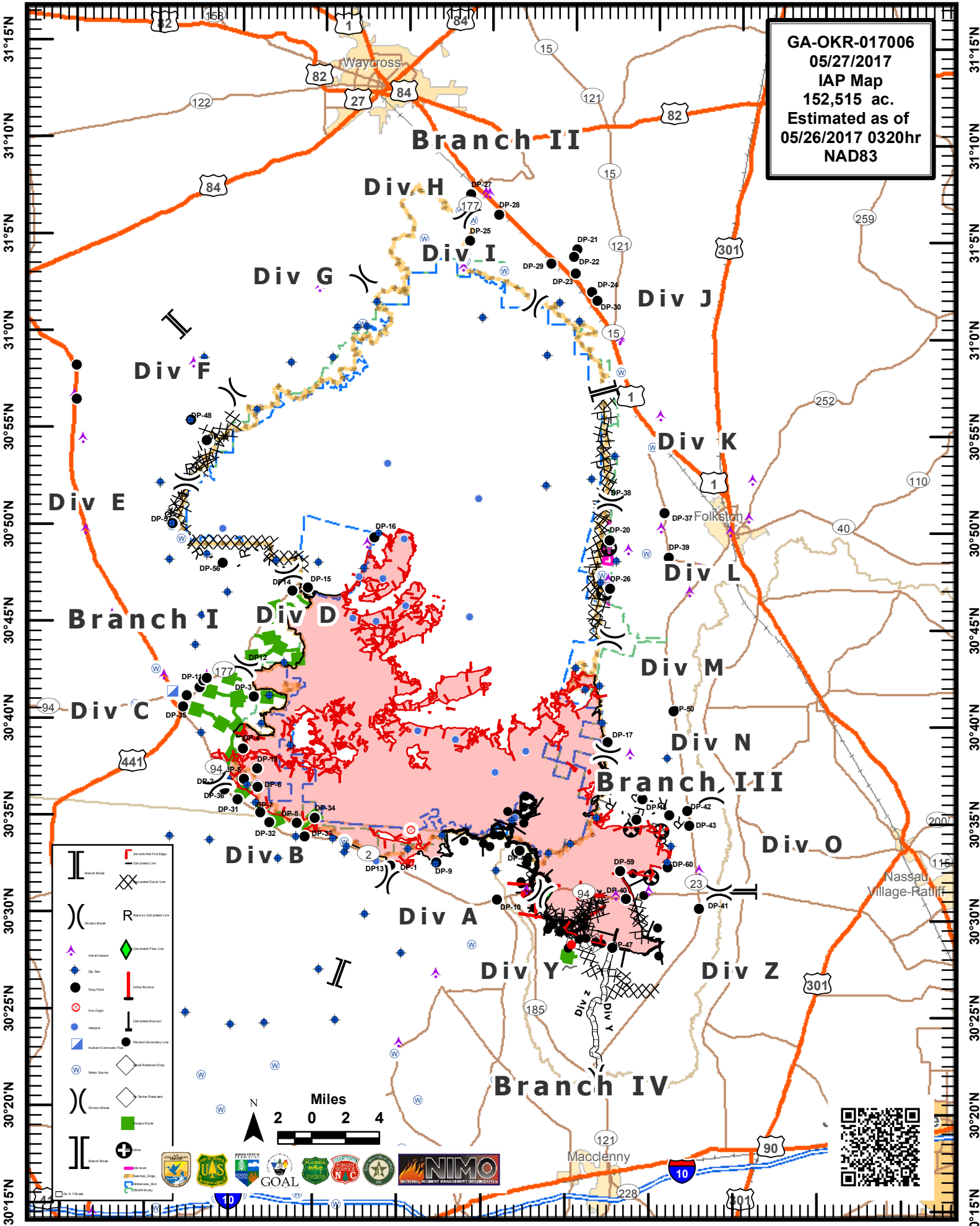
- Chicken Coop 457 W. Macclenny Ave.
- Woody's 1482 S. 6th St.

WEST MIMS DEMOBE

<u>Demob Date</u>	<u>Type</u>	<u>Request #</u>	<u>Name</u>	<u>Demob Date</u>	<u>Type</u>	<u>Request #</u>	<u>Name</u>
5/27/2017	DOZ3	E-514	Welborn Aqua	5/28/2017	ENG6	E-656	T6-161
	ENG6	E-59	GFC4202065		ENG6	E-657	2661 Brazoria Refuge
	ENG6	E-60	Chattooga 86		ENG6	E-662	Engine 603
	ENG6	E-61	Murray 86		ENG6	E-726	Engine 5670
	ENG6	E-604	NMSNF		ENG6	E727	IN Engine 5671
	ENG6	E-608	Lane Enterprises		WTS2	E-347	Tipton
	ENG6	E-609	Lane Enterprises		WTS2	E-588	Hassell
	ENG6	E-654	Bankhead				
	ENG6	E-655	Lee				
	ENG6	E-610	AZ-COF		DIVS	O-514	Buckalew
	ENG6	E-613	AZ-COF		FFT2	O-315	Meadows
	ENG6	E-612	NM-CIF		HEQB	O-509	Kutrosky
	WTS2	E-135	Tipton		HEQB	O-572	Smith
	WTS2	E-642	Black Range		HEQB	O-573	Wahlquist
					STEQ	O-548	Oltrogge
	DIVS	O-516	Garcia		OSC2	O-626	Daniels
	DIVS	O-527	Griffin		HEQB	O-601	Foreman
	ENGB	O-566	Douglas		SPUL	O-544	Zabka
	ENOP	O-567	Merz		SOF2	O-586	Young
	STEQ	O-563	Gore				
	STEQ	O-564	Mosley				

End of Shift

GA-OKR-017006
05/27/2017
IAP Map
152,515 ac.
Estimated as of
05/26/2017 0320hr
NAD83



ACTIVITY LOG (ICS 214)

1. Incident Name:	2. Operational Period:	Date From:	Date To:
		Time From:	Time To:

7. Activity Log (continuation):	
Date/Time	Notable Activities

8. Prepared by: Name: _____	Position/Title: _____	Signature: _____
ICS 214, Page 2	Date/Time: _____	

This Page Intentionally left blank.

MEDICAL PLAN (ICS 206 WF)

Medical Incident Report

FOR ALL MEDICAL EMERGENCIES: IDENTIFY ON SCENE INCIDENT COMMANDER BY NAME AND POSITION AND ANNOUNCE "MEDICAL EMERGENCY" TO INITIATE RESPONSE FROM IMT COMMUNICATIONS/DISPATCH.

Use items one through nine to communicate situation to communications/dispatch.

1. CONTACT COMMUNICATIONS/DISPATCH

Ex: "Communications, Div. Alpha. Stand-by for Priority Medical Incident Report." (If life threatening request designated frequency be cleared for emergency traffic.)

2. INCIDENT STATUS: Provide incident summary and command structure.

Nature of Injury/Illness		Describe the injury (Ex: Broken leg with bleeding)
Incident Name		Geographic Name + "Medical" (Ex: Trout Meadow Medical)
Incident Commander		Name of IC
Patient Care		Name of Care Provider (Ex: EMT Smith)

3. INITIAL PATIENT ASSESSMENT: Complete this section for each patient. This is only a brief, initial assessment. Provide additional patient info after completing this 9 Line Report.

Number of Patients:	Male / Female	Age:	Weight:
Conscious? <input type="checkbox"/> YES <input type="checkbox"/> NO = MEDEVAC!			
Breathing? <input type="checkbox"/> YES <input type="checkbox"/> NO = MEDEVAC!			
Mechanism of Injury: <i>What caused the injury?</i>			
Lat/Long (Datum WGS84) <i>Ex: N 40° 42.45' x W 123° 03.24'</i>			

4. SEVERITY OF EMERGENCY, TRANSPORT PRIORITY

SEVERITY	TRANSPORT PRIORITY
<input type="checkbox"/> URGENT-RED Life threatening injury or illness. <i>Ex: Unconscious, difficulty breathing, bleeding severely, 2° – 3° burns more than 4 palm sizes, heat stroke, disoriented.</i>	Ambulance or MEDEVAC helicopter. Evacuation need is IMMEDIATE.
<input type="checkbox"/> PRIORITY-YELLOW Serious injury or illness. <i>Ex: Significant trauma, not able to walk, 2° – 3° burns not more than 1-2 palm sizes.</i>	Ambulance or consider air transport if at remote location. Evacuation may be DELAYED.
<input type="checkbox"/> ROUTINE-GREEN Not a life threatening injury or illness. <i>Ex: Sprains, strains, minor heat-related illness.</i>	Non-Emergency. Evacuation considered Routine of Convenience.

5. TRANSPORT PLAN:

Air Transport: (Agency Aircraft Preferred)

<input type="checkbox"/> Helispot	<input type="checkbox"/> Short-haul/Hoist	<input type="checkbox"/> Life Flight	<input type="checkbox"/> Other
Ground Transport:			
<input type="checkbox"/> Self-Extract	<input type="checkbox"/> Carry-Out	<input type="checkbox"/> Ambulance	<input type="checkbox"/> Other

6. ADDITIONAL RESOURCE/EQUIPMENT NEEDS:

<input type="checkbox"/> Paramedic/EMT(s)	<input type="checkbox"/> Crew(s)	<input type="checkbox"/> SKED/Backboard/C-Collar
<input type="checkbox"/> Burn Sheet(s)	<input type="checkbox"/> Oxygen	<input type="checkbox"/> Trauma Bag
<input type="checkbox"/> Medication(s)	<input type="checkbox"/> IV/Fluid(s)	<input type="checkbox"/> Cardiac Monitor/AED
<input type="checkbox"/> Other (i.e. splints, rope rescue, wheeled litter)		

7. COMMUNICATIONS:

Function	Channel Name/Number	Receive (Rx)	Tone/NAC *	Transmit (Tx)	Tone/NAC *
<i>Ex: Command</i>	<i>Forest Rpt, Ch. 2</i>	<i>168.3250</i>	<i>110.9</i>	<i>171.4325</i>	<i>110.9</i>
COMMAND					
AIR-TO-GRND					
TACTICAL					

*(NAC for digital radio system)

8. EVACUATION LOCATION:

Lat/Long (Datum WGS84) <i>EX: N 40 42.45' x W 123 03.24'</i>	
Patient's ETA to Evacuation Location:	
Helispot/Extraction Size and Hazards:	

9. CONTINGENCY:

Considerations: <i>If primary options fail, what actions can be implemented in conjunction with primary evacuation method? Be thinking ahead...</i>	REMEMBER: Confirm ETA's of resources ordered Act according to your level of training Be Alert. Keep Calm. Think Clearly. Act Decisively.
--	--