

# INCIDENT ACTION PLAN

## WEST MIMS FIRE

### OPERATIONAL PERIOD

#### MAY 28, 2017

#### 0730-1930

## SOUTHERN STATES TYPE-1 IMT

QR for IAP



GA-OKR-017006

FWS FFF2000000KYJ70

USFS PRKYJ717\_1502 (P)

NPS PFFSKJ7017.00.1

QR for Maps



#### Schedule

0730 Pre-Op Briefing  
0800 Morning Briefing  
1100 C & G  
1600 Pre Planning Meeting  
1700 Planning Meeting



## INCIDENT OBJECTIVES (ICS 202)

<b>1. Incident Name:</b>		<b>2. Operational Period:</b> DAY SHIFT 0730-1930	
WEST MIMS		Date/Time From: 05/28/2017 0730      SUN	Date/Time To: 05/28/2017 1930      SUN
<b>3. Objective(s):</b>			
<ul style="list-style-type: none"> <li>• Provide for the safety and security of incident personnel and public in all incident operations through sound risk assessment and hazard mitigations.</li> <li>• Maintain a positive working relationship with all adjacent landowners, cooperators State and Federal partners. Inform, involve and communicate incident planning and operations with all partners.</li> <li>• Confine all fires that are within the Okefenokee National Wildlife Refuge, inside the Refuge and/or inside the swamp edge break if possible. Aggressively suppress all fire outside the swamp edge boundary.</li> <li>• In cooperation with local timberland owners, use full suppression strategies and tactics to minimize damage to private timberlands and improvements and to prevent fires outside the Refuge from entering the Refuge.</li> <li>• Assist in management and suppression of additional fires (new starts or breakouts) in the vicinity as approved by Agency Administrators and Unified Incident Commanders.</li> <li>• Protect all cultural and archeological sites and structures within the refuge.</li> <li>• Manage the fires cost-effectively consistent with the values at risk.</li> <li>• Implement structure protection as necessary for at-risk facilities and communities.</li> <li>• Coordinate suppression actions with assigned Refuge Resource Advisors, and/or adjoining landowners.</li> <li>• Conduct all operations in a harassment-free environment. There will be a no tolerance atmosphere for harassment, alcohol, or illegal drug use. Everyone will be treated with dignity and respect.</li> <li>• Identify and initiate suppression repair on all Divisions.</li> </ul>			
<b>4. Operational Period Command Emphasis:</b>			
Branch IV Keep fire East of the North Prong of St Mary's River; West of Nassau county Florida; and North of Baker county Florida			
Branch III Keep fire North of Rayonier Road 10, West of St Mary's River, and South of Stokes Road			
Keep fire within the Okefenokee Refuge Swamp Edge Break Boundary. Respond to initial attack fires on new starts within: *South of Suwannee Canal *Within the Okefenokee jurisdictional boundaries *Within state properties inside Perimeter Road			
<b>General Situational Awareness:</b>			
Utilize confine, contain, and point source protection strategies and tactics that commit operations personnel only where and when they can be successful, under conditions where important values at risk are protected with the least exposure.			
<b>5. Site Safety Plan Required?</b> Yes <input type="checkbox"/> No <input checked="" type="checkbox"/>			
<b>Approved Site Safety Plan(s) Located at:</b>			
<b>6. Incident Action Plan</b> (the items checked below are included in this Incident Action Plan):			
<input checked="" type="checkbox"/> ICS 202	<input type="checkbox"/> ICS 207	Other Attachments:	
<input checked="" type="checkbox"/> ICS 203	<input checked="" type="checkbox"/> ICS 208	<input checked="" type="checkbox"/> <u>PIO MESSAGE</u>	
<input checked="" type="checkbox"/> ICS 204	<input checked="" type="checkbox"/> ICS 220	<input checked="" type="checkbox"/> <u>TENTATIVE DEMOB</u>	
<input checked="" type="checkbox"/> ICS 205	<input checked="" type="checkbox"/> Map/Chart	<input checked="" type="checkbox"/> <u>SAFETY MESSAGE</u>	
<input type="checkbox"/> ICS 205A	<input checked="" type="checkbox"/> Weather Forecast/Tides/Currents	<input checked="" type="checkbox"/> <u>RESTAURANT LIST</u>	
<input checked="" type="checkbox"/> ICS 206			
<b>7. Prepared by:</b> JOE BISHOP		<b>Position/Title:</b> PSC2 (T)	<b>Signature:</b>
<b>8. Approved by Incident Commander:</b>		<b>Name:</b>	<b>Signature:</b>
<b>ICS 202</b>		<b>IAP Page</b>	<b>Date/Time:</b>

## ORGANIZATION ASSIGNMENT LIST (ICS 203)

<b>1. Incident Name:</b>		<b>2. Operational Period:</b> DAY SHIFT 0730-1930	
WEST MIMS		Date/Time From: 05/28/2017 0730	SUN Date/Time To: 05/28/2017 1930 SUN
<b>3. Incident Commander(s) and Command Staff:</b>		GIS SPECIALIST DOMINIC MARCANIO; CLINT ROBERTS BRENDAN MULHOLLAND (T)	
IC/UC	SAM LENEAVE; KEITH MOUSEL (T); MIKE QUESINBERRY		
SAFETY OFFICER	LARRY CONNELL; LARRY GRUBBS CLAY STEPHENS (T)	INCIDENT METEOROLOGIST	SCOTT KENNEDY
INFORMATION OFFICER	ANNALEASA WINTER TODD SCHROEDER; JUDITH DOWNING	FIRE BEHAVIOR ANALYST	BRAD SMITH MIKE WARD (T); ANDREW TAYLOR (T)
		AIR RESOURCE ADVISOR	SEAN LUCHS
LIAISON OFFICER	ALAN DOZIER DANIEL STANLEY; PAUL STEVENS	<b>6. Logistics Section:</b>	
TECHNICAL SPECIALIST	GENE MADDEN	CHIEF	EAST - JIM PETERS WEST - DAVID MCVAY (T); SALLY BROWNING
<b>4. Agency/Organization Representative(s):</b>		SUPPLY UNIT	WEST-LAUREN SMITH EAST-TRAVIS SHIDAL
<b>Agency/Organization</b>	<b>Name</b>	FACILITIES UNIT	WEST-DENNIS EVANS EAST-CURTIS ASAY
GFC PROTECTION	FRANK SORRELLS	GROUND SUPPORT UNIT	WEST-GLENN SIMMONS EAST-DOUGLAS CROCKER
OKE REF MGR/ASSIST	MICHAEL LUSK; SARA CLARDY		
OKE REF FMO	REESE KERBOW	COMMUNICATIONS UNIT	CHUCK RADCLIFF PAUL NOA (T)
GOAL	JIM BARRETT	MEDICAL UNIT	WEST-STEPHEN RUSSO; TRAVIS MCGOWEN EAST-BRAD BURNS; MATTHEW LARICOS (T)
FL FFS	JOHN RAULERSON		
GEMA	KRISTEN HIGGS		
NORFOLK SOUTHERN	CHAD EDWARDS	COMT	WEST-KELLY TOWE; KEVIN THROOP EAST-DAVID RADZIVILL
CLINCH CO EMA	WILL JOYCE; RANDY PATTEN	FOOD UNIT	WEST-STEPHEN MARSHALL EAST-BRANTLEY SMITH (T)
CHARLTON CO EMA	BRUCE YOUNG		
WARE CO EMA	BILLY PARHAM	SECURITY UNIT	GREG BLANKS
NASSAU COUNTY	BILLY E STEP	ORDM	MARK MCCLELLAN; TAMARA KLINDT MICHAEL STIGLER (T)
COLUMBIA COUNTY	SHAYNE MORGAN	RCDM	LAUREN SMITH; JAKE CLEVINGER
BAKER CO SO	BECK PARKER	EQPM	KIRBY HENNINSSSEN; JASON MCHAN
<b>5. Planning Section:</b>		INCM	GAVIN WALTER
CHIEF	DUANE DURGEE JOE BISHOP (T); DARREL SCHWILLING	NIGHT RADO	LORI GOROSPE RICHARD DODSON
RESOURCES UNIT	SHAUN STEWART TOM WINSHIP; JEFF TURNER (T)	BCMG (DAY)	WEST-BOB EMRICK EAST-JAWANA STEPHENS (T)
STATUS CHECKIN	JESSICA VALDEZ STACEY CLEMENSON	RADO	JOHN BURCH; DAVID POWELL HANNAH JOHNSON
DOCUMENTATION UNIT	TERI PARVIN		
SITUATION UNIT	SCOTT CROSBY STUART COOMBS		
DEMOBILIZATION UNIT	BOBBY CAHAL MEREDITH BUTCHER (T)		
ITSS	DEAN GROE; RANDALL FOUNTAIN CORY NICHOLSON (T)		
TRAINING SPECIALIST	DAVID HUNT		
HUMAN RESOURCE SPECIALIST	LARRY SANDOVAL		
<b>9. Prepared By:</b>	<b>Name:</b> SHAUN STEWART	<b>Position/Title:</b> RESL	<b>Signature:</b>
ICS 203	IAP Page	<b>Date/Time:</b> 05/27/2017 0942	





## **To: All Incident Personnel, West Mims Fire 2017**

As the Unified Command Incident Commanders, we have a policy of “zero tolerance” of inappropriate behavior during incident operations. Any form of harassment, discriminatory practices, or disrespectful behavior will not be tolerated. Known or reported acts will be dealt with appropriately.

We are particularly concerned about the perception that alcohol has a place in any of the Incident facilities. It is not appropriate to indulge in alcoholic beverages during any fire assignment.

The National Team from the Southern Region has a policy of “NO ALCOHOL” from the time of dispatch until the time of physical release from the Incident. Members of the Team voluntarily comply with this policy; all incident personnel will be expected to do so also.

We endorse, support, and expect an attitude of mutual respect for all Incident personnel and the public we serve. We also, endorse the attitude and work ethic that places “Safety First, every time on every Incident.” We expect nothing less.

<p>/s/ Keith Mousel /s/ Mike Quesinberry Incident Commanders</p>
--



# Fire Weather Forecast



**FORECAST NO: 51**  
**PREDICTION FOR: Sunday**  
**SHIFT DATE: May 28, 2017**  
**FORECAST ISSUED: 1800 May 27, 2017**

**NAME OF FIRE: West Mims Fire**  
**UNIT: Okefenokee National Wildlife Refuge**  
**Incident Meteorologist: Scott Kennedy 252-269-9497**

## DISCUSSION:

High pressure continues across the area today with hot and dry conditions continuing. Temperatures will climb into the middle 90s with heat index values around 100 degrees. Minimum RH values will be around 40 percent with southwest winds gusting as high as 20 mph during the afternoon.

## SUNDAY:

- WEATHER: Partly cloudy.
- WIND (20 FT): West 7 to 12 mph with gusts up to 20 mph.
- MAX TEMPERATURES: 92-96    MAX HEAT INDEX: 98-101    MIN RH: 40-45%
- LAL: 1    CHANCE RAIN: 0%    DISPERSION (MAX): 70
- MIXING HEIGHT: 5000    RAINFALL: 0"    TRANSPORT WINDS: W 20 mph

## SUNDAY NIGHT:

- WEATHER: Partly cloudy.
- WIND (20 FT): Southwest 2 to 5 mph.
- MIN TEMPERATURES: 69 to 72    MAX RH: 95-100%    MAX LVORI: 10
- LAL: 1    CHANCE OF RAIN: 0%    RAINFALL: 0"

## HOURLY WEATHER FORECAST (LST) Sunday 1000 through Monday 0800

Time	1000	1200	1400	1600	1800	2000	2200	2400	0200	0400	0600	0800
Temp °F	85	92	95	94	91	85	79	76	73	71	70	72
RH %	63	49	42	41	47	59	72	79	87	93	100	95
Wind Dir	W	W	W	W	W	SW	SW	SW	SW	SW	W	W
Wind Spd mph	6	7	8	10	8	6	3	3	2	2	1	2
Wind Gst mph	12	13	15	18	14	10	-	-	-	-	-	-
Rain Chance%	0	0	0	0	0	0	0	0	0	0	0	0
Weather	-	-	-	-	-	-	-	-	-	-	-	-

## MONDAY:

- WEATHER: Partly cloudy.
- WIND (20 FT): Southwest 4 to 8 mph with gusts to 15 mph.
- MAX TEMPERATURES: 93-97    MAX HEAT INDEX: 99-103    MIN RH: 40-45%
- LAL: 1    CHANCE RAIN: 10%    DISPERSION (MAX): 70
- MIXING HEIGHT: 6000    RAINFALL: 0"    TRANSPORT WINDS: W 20 mph

**Sunrise Sunday: 6:29 am**

**Sunset Sunday: 8:26 pm**

**Sunrise Monday: 6:29 am**

## RAWS Observations:

Jones Island



Eddy Tower



OKE East



OKE NW



**FIRE BEHAVIOR FORECAST**

<b>FORECAST NUMBER: #41</b>	<b>TYPE OF FIRE: Wildland</b>
<b>FIRE NAME: West Mims</b>	<b>OPERATIONAL PERIOD: 05/28/2017 Day Operational Period</b>
<b>DATE ISSUED: 05/27/2017</b>	<b>TIME ISSUED: 1800</b>
<b>UNIT: Okefenokee National Wildlife Refuge</b>	<b>WRITTEN: Michael Ward FBAN(t) Signed: Brad Smith FBAN</b>

**FUEL ASSUMPTIONS:** Fuel types include timber litter (reburn fuels), brush fuels that represent the organic swamp and bayhead fuels. The high risk fuel is the pine plantation overstory with the palmetto/gallberry brush understory commonly referred to as southern rough. Live canopy fuel moistures in pines and brush are below average and will support active crown fire when critical fire weather and above fuel dryness is present. Current fuel dryness, as represented by KBDI and ERC G, currently above normal. KBDI is 571 or 80<sup>th</sup> percentile and ERC G is 35 or above the 75<sup>th</sup> percentile.  
 Calculated 1 hour fine dead fuel moisture: 6%      10 hour fuel moisture: 8%      100 hour fuel moisture: 14%

**WEATHER SUMMARY:** The cold front that passed through over the fire on Tuesday and Wednesday has left the area giving way to clear and sunny skies bringing in warming and drying conditions.

WIND (20 FT): W 7-12 gust 20 mph.  
 MAX TEMPERATURES: 89-92      MIN RH: 40-45%  
 LAL: 1      CHANCE OF RAIN: 0      MAX DISPERSION: 70  
 MIXING HEIGHT: 5000      TRANSPORT WINDS: W 20 mph

**General observed fire behavior prior to rain:** Drought conditions exist across the fire area. Fire will easily transition from surface into the canopy when ladder fuels are present; Expect long range spotting from active crown fire. A fires resistance to control increases when one or more of the fire behavior thresholds are exceeded and fuel dryness is above average. Increased fire intensity, higher rate of spread and higher crown fire potential are possible when these thresholds are exceeded.

**Critical fire behavior thresholds when fuels are dry:**  
 Temp >90°,      RH < 40%,      Dispersion index greater than 60

**Specific:** All Branches: Surface fuels will continue to dry out and become available to burn. Piles and muck soils will continue to hold heat and burn. Needle cast in previously burnt areas will re-burn where ignitions occur. New starts are possible from lightning hold overs from the recent lightning activity as fuels dry out and temperature increases and RH decreases. Both temperature and RH will exceed critical fire behavior thresholds.

Fuel Type	Rates of Spread	Flame Length	Max Spot Distance	Probability of Ignition	Torching / Crowning Potential / Flame Lengths
20' winds @ 7-12					
<b>Southern Rough(pine w/palmetto/gallberry)(FM7)</b>	12-24 ch/hr.	5-8 feet	500 feet	60%	Torching and Short Crown Runs predicted in young plantations (5-15 yr).
<b>Timber Litter (pine litter reburn) (FM8)</b>	1-2 ch/hr.	1 feet	0 feet	60%	Torching not predicted
<b>Brush (Swamp SH8)</b>	13-24 ch/hr.	8-11 feet	0 feet	60%	Torching in shrub component predicted
<b>Brush (Swamp SH3)</b>	2-4 ch/hr.	2-3 feet	0 feet	60%	Torching not predicted

**AIR OPERATIONS:** Winds will be light with moderate gusts making for favorable conditions for air operations.

**FIRE BEHAVIOR SAFETY:** Beware of heat in stump holes and piles while mopping up. Use equipment to break down piles.

Reference: 1 chain = 66 feet, 20 chains = .25 mile, 40 chains = .50 mile, 60 chains = .75 mile, 80 chains = 1 Mile

# IA Protocol

- Determine LAT/LONG.
- Notify OSC and/or OPBD.
- OSC/OPBD will notify Unified IC's for approval to assist with ground or aviation resources.

## In Georgia:

Southern Response Dispatch (229) 386-3846

**If no contact**-Buck Kline (912) 678-2694

## In Florida-

Lake City (Baker, Columbia, and Hamilton Counties):  
(386) 243-6243

Jacksonville (Nassau County): (904) 266-8351

**If no contact**-Rick Dolan (352) 353-5101

Osceola National Forest- Any starts south of Florida State Highway 2 under USFS jurisdiction are the responsibility of the Osceola NF. Contact Tallahassee Dispatch at 850-523-8600 or Forest Duty Officer Drew Page at 850-523-8600. Tractor plow units should not engage (unless life or property is threatened) before contact with Osceola NF (Chris Lydick at 850-264-3209 or Scott Hussey at 352-215-5722).

## For OKR-

Brantley Boatright Dispatch (912) 496-7366 x 230  
or (912) 276-0023



## Division/Group Assignment List (ICS 204 WF)

<b>1. Incident Name:</b>			<b>3.</b>			
WEST MIMS			<b>Branch:</b>		<b>Division/Group:</b>	
<b>2. Operational Period:</b> DAY SHIFT 0730-1930			<b>I</b>		<b>B</b>	
Date/Time From: 05/28/2017 0730      SUN		Date/Time To: 05/28/2017 1930      SUN				
<b>4. Operations Personnel</b>						
<b>PLANNING OPERATIONS CHIEF</b>		TRENT INGRAM PHIL DANIELS (T)		<b>OPERATIONS CHIEF</b>		RICK DOLAN BUCK KLINE
<b>BRANCH DIRECTOR</b>		LANCE DELGADO		<b>DIVISION/GROUP SUPERVISOR</b>		RON RUCKER, JERRY VAN DYNE KEITH FIELDS (T)
<b>SAFETY</b>		LARRY GRUBBS CLAY STEPHENS (T)		<b>AIR TACTICAL GROUP SUPERVISOR</b>		MARK NUNEZ KEN MCLAUGHLIN
<b>5. Resources Assigned this Period</b>						
Strike Team / Task Force / Resource Designator		LWD	Leader	Number Persons	Drop Off PT./Time	Pick Up PT./Time
STEN O-605		05/29	COURTNEY WENZEL	1	ICP/0730	ICP/1930
ENG6 NM-SNF - JEMEZ RD - 631 E-763		05/29	KARL KEEMAN	6	ICP/0730	ICP/1930
ENG6 AR-OZF - PH - E-641 E-76		05/29	MICHAEL W KOCH	3	ICP/0730	ICP/1930
ENG6 UT-FIF - ENG 612 E-843		06/02	JARAD TEEPLES	8	ICP/0730	ICP/1930
WTS1 WILDLANDS FIRE SERVICE E-132		05/30	DAVID SWEENEY	1	ICP/0730	ICP/1930
FOBS O-689		05/31	LEW BECKER	1	ICP/0730	ICP/1930
FOBS (T) O-695		05/31	BRAD SCHUETTE	1	ICP/0730	ICP/1930
EMPF O-754		06/09	COBY SAUREY	1	ICP/0730	ICP/1930
SOF2 O-252		05/31	CHRIS CHURCH	1	ICP/0730	ICP/1930
<b>6. Control Operations/Work Assignments:</b>						
<b>8. Division/Group Communication Summary</b>						
Function	Channel	RX Frequency N/W	RX Tone/NAC	TX Frequency N/W	TX Tone/NAC	Mode
AIR TO GROUND	ZONE 2 / CH4	169.2000N	NONE	169.2000N	NONE	A
COMMAND	ZONE 2 / CH8	159.2700N	156.7	151.1000N	123.0	A
TACTICAL	ZONE 2 / CH13	159.4125N	NONE	159.4125N	NONE	A
AIR TO GROUND	ZONE 2 / CH14	166.6750N	NONE	166.6750N	NONE	A
AIR TO GROUND	ZONE 2 / CH15	169.1500N	NONE	169.1500N	NONE	A
AIR GUARD	ZONE 2 / CH16	168.6250N	NONE	168.6250N	110.9	A
<b>9. Prepared By (Resource Unit Leader)</b>			<b>Approved By (Planning Section Chief)</b>		<b>Date</b>	<b>Time</b>
JEFF TURNER, RESL (T)			JOE BISHOP, PSC2 (T)		05/27/2017	0942

## Division/Group Assignment List (ICS 204 WF)

<b>1. Incident Name:</b>			<b>3.</b>			
WEST MIMS			<b>I</b>	<b>B</b>		
<b>2. Operational Period:</b> DAY SHIFT 0730-1930						
Date/Time From: 05/28/2017 0730	SUN	Date/Time To: 05/28/2017 1930	SUN			
<b>4. Operations Personnel</b>						
<b>PLANNING OPERATIONS CHIEF</b>	TRENT INGRAM PHIL DANIELS (T)		<b>OPERATIONS CHIEF</b>	RICK DOLAN BUCK KLINE		
<b>BRANCH DIRECTOR</b>	LANCE DELGADO		<b>DIVISION/GROUP SUPERVISOR</b>	RON RUCKER, JERRY VAN DYNE KEITH FIELDS (T)		
<b>SAFETY</b>	LARRY GRUBBS CLAY STEPHENS (T)		<b>AIR TACTICAL GROUP SUPERVISOR</b>	MARK NUNEZ KEN MCLAUGHLIN		
<b>6. Control Operations/Work Assignments:</b>						
<b>Task</b>						
<ul style="list-style-type: none"> <li>• Patrol and mop up fuels appropriate to fuel type and anticipated weather and fire behavior.</li> <li>• Respond to any new starts within the division.</li> </ul>						
<b>Purpose</b>						
<ul style="list-style-type: none"> <li>• Keep fire north of GA 94/FL 2.</li> </ul>						
<b>End State</b>						
<ul style="list-style-type: none"> <li>• Fire is contained by adequate control line to reduce threat to escape; minimizing damage to private timberlands, private lands, and other resource values at risk.</li> </ul>						
<b>7. Special Instructions:</b>						
Ensure LCES is in place before operations begin and stay hydrated. Drive defensively and with lights on at all times. Identify escape routes.						
Use caution when working around logging operations.						
<b>For IA protocol see page 7</b>						
<b>Medical Emergency Channel: Command</b> <b>ETA for Ambulance to Scene:</b> <b>Air: 20 – 30 mins</b> <b>Ground: 10 - 15 mins Paved roads only.</b> <b>IWI – IC or approved person will use Channel 16 (Air Guard) for contact with air ambulance</b> <b>Air Ambulance landing zone to be determined by IWI – IC</b> <b>Utilize engines to provide dust abatement, as needed, prior to air ambulance landing</b>						
<b>8. Division/Group Communication Summary</b>						
Function	Channel	RX Frequency N/W	RX Tone/NAC	TX Frequency N/W	TX Tone/NAC	Mode
AIR TO GROUND	ZONE 2 / CH4	169.2000N	NONE	169.2000N	NONE	A
COMMAND	ZONE 2 / CH8	159.2700N	156.7	151.1000N	123.0	A
TACTICAL	ZONE 2 / CH13	159.4125N	NONE	159.4125N	NONE	A
AIR TO GROUND	ZONE 2 / CH14	166.6750N	NONE	166.6750N	NONE	A
AIR TO GROUND	ZONE 2 / CH15	169.1500N	NONE	169.1500N	NONE	A
AIR GUARD	ZONE 2 / CH16	168.6250N	NONE	168.6250N	110.9	A
<b>9. Prepared By (Resource Unit Leader)</b>			<b>Approved By (Planning Section Chief)</b>		<b>Date</b>	<b>Time</b>
JEFF TURNER, RESL (T)			JOE BISHOP, PSC2 (T)		05/27/2017	0942

## Division/Group Assignment List (ICS 204 WF)

<b>1. Incident Name:</b>			<b>3.</b>			
WEST MIMS			<b>Branch:</b>		<b>Division/Group:</b>	
<b>2. Operational Period:</b> <b>DAY SHIFT 0730-1930</b>			<b>I</b>		<b>C</b>	
Date/Time From: 05/28/2017 0730                   SUN		Date/Time To: 05/28/2017 1930                   SUN				
<b>4. Operations Personnel</b>						
<b>PLANNING OPERATIONS CHIEF</b>		TRENT INGRAM PHIL DANIELS (T)		<b>OPERATIONS CHIEF</b>		RICK DOLAN BUCK KLINE
<b>BRANCH DIRECTOR</b>		LANCE DELGADO		<b>DIVISION/GROUP SUPERVISOR</b>		CHRIS ROBERTS
<b>SAFETY</b>		LARRY GRUBBS CLAY STEPHENS (T)		<b>AIR TACTICAL GROUP SUPERVISOR</b>		MARK NUNEZ KEN MCLAUGHLIN
<b>5. Resources Assigned this Period</b>						
Strike Team / Task Force / Resource Designator		LWD	Leader	Number Persons	Drop Off PT./Time	Pick Up PT./Time
HC2IA PATRICK ENVIRONMENTAL C-11		05/29	AUSTIN HERGERT	19	ICP/0730	ICP/1930
TFLD O-597		05/29	CHAD KIDD	1	ICP/0730	ICP/1930
TFLD (T) O-701		05/30	TRAVIS CARSON	1	ICP/0730	ICP/1930
ENG4 NC-NCS - PP-1434 - D3 E-542		06/06	MATT GARNER	2	ICP/0730	ICP/1930
ENG6 WV-MOF 641 E-870		06/02	JARED STAGGS	3	ICP/0730	ICP/1930
ENG6 AL-ALF SHOAL CREEK 651 E-78		06/06	SCOTT LAYFIELD	3	ICP/0730	ICP/1930
STEQ O-717		06/01	MYRON WILLIAMS	1	ICP/0730	ICP/1930
TPL4 GFC 3254 E-876		06/01	MICHAEL YOKE JR	1	ICP/0730	ICP/1930
TPL4 GFC 3331 E-877		06/01	DAVID THOMPkins	1	ICP/0730	ICP/1930
TPL5 GFC 3219 E-878		06/01	PHIL DAVIS	1	ICP/0730	ICP/1930
EMPF E-352.2		06/13	COLIN STENHOUSE	1	ICP/0730	ICP/1930
SOF2 O-541		06/11	LOUIE CASAUS	1	ICP/0730	ICP/1930
<b>6. Control Operations/Work Assignments:</b>						
<b>8. Division/Group Communication Summary</b>						
Function	Channel	RX Frequency N/W	RX Tone/NAC	TX Frequency N/W	TX Tone/NAC	Mode
AIR TO GROUND	ZONE 2 / CH4	169.2000N	NONE	169.2000N	NONE	A
COMMAND	ZONE 2 / CH8	159.2700N	156.7	151.1000N	123.0	A
TACTICAL	ZONE 2 / CH9	159.2850N	NONE	159.2850N	156.7	A
AIR TO GROUND	ZONE 2 / CH14	166.6750N	NONE	166.6750N	NONE	A
AIR TO GROUND	ZONE 2 / CH15	169.1500N	NONE	169.1500N	NONE	A
AIR GUARD	ZONE 2 / CH16	168.6250N	NONE	168.6250N	110.9	A
<b>9. Prepared By (Resource Unit Leader)</b>			<b>Approved By (Planning Section Chief)</b>		<b>Date</b>	<b>Time</b>
JEFF TURNER, RESL (T)			JOE BISHOP, PSC2 (T)		05/27/2017	0942

## Division/Group Assignment List (ICS 204 WF)

<b>1. Incident Name:</b>			<b>3.</b>			
WEST MIMS			<b>Branch:</b>		<b>Division/Group:</b>	
<b>2. Operational Period:</b> DAY SHIFT 0730-1930			<b>I</b>		<b>C</b>	
Date/Time From: 05/28/2017 0730      SUN		Date/Time To: 05/28/2017 1930      SUN				
<b>4. Operations Personnel</b>						
<b>PLANNING OPERATIONS CHIEF</b>		TRENT INGRAM PHIL DANIELS (T)		<b>OPERATIONS CHIEF</b>		RICK DOLAN BUCK KLINE
<b>BRANCH DIRECTOR</b>		LANCE DELGADO		<b>DIVISION/GROUP SUPERVISOR</b>		CHRIS ROBERTS
<b>SAFETY</b>		LARRY GRUBBS CLAY STEPHENS (T)		<b>AIR TACTICAL GROUP SUPERVISOR</b>		MARK NUNEZ KEN MCLAUGHLIN
<b>6. Control Operations/Work Assignments:</b>						
<b>Task</b>						
<ul style="list-style-type: none"> <li>• Patrol and mop up fuels appropriate to fuel type and anticipated weather and fire behavior.</li> <li>• Respond to any new starts within the division.</li> <li>• Create or improve fireline around logging debris in coordination with logging operators.</li> </ul>						
<b>Purpose</b>						
<ul style="list-style-type: none"> <li>• Keep fire east of swamp edge fire break.</li> </ul>						
<b>End State</b>						
<ul style="list-style-type: none"> <li>• Fire is contained by adequate control line to reduce threat to escape; minimizing damage to private timberlands, private lands, and other resource values at risk.</li> </ul>						
<b>7. Special Instructions:</b>						
<p>Ensure LCES is in place before operations begin and stay hydrated. Drive defensively and with lights on at all times. Identify escape routes. Logging operations are continuing. Stay clear of cutting areas. Please be mindful of logging operations that will be ongoing. Ensure that all personnel stay clear of felling operations. Pay attention for potential reburn in logging area. Work with Gilyard Logging foreman on any suppression actions within the logging area.</p> <p>Use caution when working around logging operations.</p> <p><b><u>For IA protocol see page 7</u></b></p> <p><b>Additional Resources:</b>          Superior Pine Tractor Plow D6; SP-83, SP-85, SP-87          Medical Emergency Channel: Command          ETA for Ambulance to Scene:          Air: 20 – 30 mins          Ground: 10 - 15 mins Paved roads only.          IWI – IC or approved person will use Channel 16 (Air Guard) for contact with air ambulance          Air Ambulance landing zone to be determined by IWI – IC          Utilize engines to provide dust abatement, as needed, prior to air ambulance landing</p>						
<b>8. Division/Group Communication Summary</b>						
Function	Channel	RX Frequency N/W	RX Tone/NAC	TX Frequency N/W	TX Tone/NAC	Mode
AIR TO GROUND	ZONE 2 / CH4	169.2000N	NONE	169.2000N	NONE	A
COMMAND	ZONE 2 / CH8	159.2700N	156.7	151.1000N	123.0	A
TACTICAL	ZONE 2 / CH9	159.2850N	NONE	159.2850N	156.7	A
AIR TO GROUND	ZONE 2 / CH14	166.6750N	NONE	166.6750N	NONE	A
AIR TO GROUND	ZONE 2 / CH15	169.1500N	NONE	169.1500N	NONE	A
AIR GUARD	ZONE 2 / CH16	168.6250N	NONE	168.6250N	110.9	A
<b>9. Prepared By (Resource Unit Leader)</b>			<b>Approved By (Planning Section Chief)</b>		<b>Date</b>	<b>Time</b>
JEFF TURNER, RESL (T)			JOE BISHOP, PSC2 (T)		05/27/2017	0942

## Division/Group Assignment List (ICS 204 WF)

<b>1. Incident Name:</b>			<b>3.</b>			
WEST MIMS			<b>Branch:</b>		<b>Division/Group:</b>	
<b>2. Operational Period:</b> <b>DAY SHIFT 0730-1930</b>			<b>I</b>		<b>D</b>	
Date/Time From: 05/28/2017 0730                   SUN		Date/Time To: 05/28/2017 1930                   SUN				
<b>4. Operations Personnel</b>						
<b>PLANNING OPERATIONS CHIEF</b>		TRENT INGRAM PHIL DANIELS (T)		<b>OPERATIONS CHIEF</b>		RICK DOLAN BUCK KLINE
<b>BRANCH DIRECTOR</b>		LANCE DELGADO		<b>DIVISION/GROUP SUPERVISOR</b>		WALTER BOWERS HEATHER GRIFFIN (T)
<b>SAFETY</b>		LARRY GRUBBS CLAY STEPHENS (T)		<b>AIR TACTICAL GROUP SUPERVISOR</b>		MARK NUNEZ, KEN MCLAUGHLIN
<b>5. Resources Assigned this Period</b>						
Strike Team / Task Force / Resource Designator		LWD	Leader	Number Persons	Drop Off PT./Time	Pick Up PT./Time
TFLD O-596		05/28	ALFRED ALLMAN	1	ICP/0730	ICP/1930
HEQB O-662		05/31	WILLIAM BOJORQUES	1	ICP/0730	ICP/1930
DOZ2 OK-OKS ECU #2178 E-503		06/08	AARON SUMPTER	1	ICP/0730	ICP/1930
ENG6 AR-OUF-PCS #691 E-838		05/30	LARRY SHORES	3	ICP/0730	ICP/1930
ENG6 FL-FNF-641 E-157		05/28	JUSTIN KNOWLES	3	ICP/0730	ICP/1930
ENG6 WY-RSD 1602 E-849		05/31	RICHARD HOWE	3	ICP/0730	ICP/1930
TFLD O-649		05/29	RANDY OKON	1	ICP/0730	ICP/1930
TFLD(T) O-730		06/07	JOEY SILVA	1	ICP/0730	ICP/1930
COLQUITT SFSP E-118		06/05	CHAD PRITCHETT	1	ICP/0730	ICP/1930
TFLD O-593		05/29	BRYAN ROSENOW	1	ICP/0730	ICP/1930
DOZ3 KY-KYS 311 - 650J E-510		06/09	JERRY BROWN	2	ICP/0730	ICP/1930
DOZ3 KY-KYS 312 - 650J E-511		06/09	CHRIS ADAMS	2	ICP/0730	ICP/1930
FOBS O-541		06/11	LOUIE CASAUS	1	ICP/0730	ICP/1930
FOBS O-689		05/31	LEW BECKER	1	ICP/0730	ICP/1930
<b>8. Division/Group Communication Summary</b>						
Function	Channel	RX Frequency N/W	RX Tone/NAC	TX Frequency N/W	TX Tone/NAC	Mode
COMMAND	ZONE 1 / CH2	159.1200N	NONE	151.3700N	100.0	A
AIR TO GROUND	ZONE 1 / CH4	169.2000N	NONE	169.2000N	NONE	A
TACTICAL	ZONE 1 / CH13	159.4125N	NONE	159.4125N	NONE	A
AIR TO GROUND	ZONE 1 / CH14	166.6750N	NONE	166.6750N	NONE	A
AIR TO GROUND	ZONE 1 / CH15	169.1500N	NONE	169.1500N	NONE	A
AIR GUARD	ZONE 1 / CH16	168.6250N	NONE	168.6250N	110.9	A
<b>9. Prepared By (Resource Unit Leader)</b>			<b>Approved By (Planning Section Chief)</b>		<b>Date</b>	<b>Time</b>
JEFF TURNER, RESL (T)			JOE BISHOP, PSC2 (T)		05/27/2017	0942

## Division/Group Assignment List (ICS 204 WF)

<b>1. Incident Name:</b>			<b>3.</b>			
WEST MIMS			<b>Branch:</b>		<b>Division/Group:</b>	
<b>2. Operational Period:</b> DAY SHIFT 0730-1930			<b>I</b>		<b>D</b>	
Date/Time From: 05/28/2017 0730      SUN		Date/Time To: 05/28/2017 1930      SUN				
<b>4. Operations Personnel</b>						
<b>PLANNING OPERATIONS CHIEF</b>		TRENT INGRAM PHIL DANIELS (T)		<b>OPERATIONS CHIEF</b>		RICK DOLAN BUCK KLINE
<b>BRANCH DIRECTOR</b>		LANCE DELGADO		<b>DIVISION/GROUP SUPERVISOR</b>		WALTER BOWERS HEATHER GRIFFIN (T)
<b>SAFETY</b>		LARRY GRUBBS CLAY STEPHENS (T)		<b>AIR TACTICAL GROUP SUPERVISOR</b>		MARK NUNEZ, KEN MCLAUGHLIN
<b>5. Resources Assigned this Period</b>						
Strike Team / Task Force / Resource Designator		LWD	Leader	Number Persons	Drop Off PT./Time	Pick Up PT./Time
EMPF E-342.2		06/01	ROD SCHMIDT	1	ICP/0730	ICP/1930
TFLD (T) O-695		05/31	BRADLEY SCHUETTE	1	ICP/0730	ICP/1930
<b>6. Control Operations/Work Assignments:</b>						
Task						
<ul style="list-style-type: none"> <li>Patrol and mop up fuels appropriate to fuel type and anticipated weather and fire behavior.</li> <li>Respond to any new starts within the division.</li> <li>Monitor fire activity and location in the vicinity of Billies Island.</li> </ul>						
Purpose						
<ul style="list-style-type: none"> <li>Keep fire south of the Suwannee Canal.</li> </ul>						
End State						
<ul style="list-style-type: none"> <li>Fire activity north and west of Billy's Island has been detected and appropriate action has been initiated.</li> <li>Fire is contained by adequate control line to reduce threat to escape; minimizing damage to private timberlands, private lands, and other resource values at risk.</li> </ul>						
<b>7. Special Instructions:</b>						
Ensure LCES is in place before operations begin and stay hydrated. Drive defensively and with lights on at all times. Identify escape routes.						
Ensure all firefighters receive a safety briefing from Resource personnel and don PFDs before boarding the vessel.						
All personnel must receive a briefing and don all PPE, including a PFD, prior to boarding a water vessel.						
<b>8. Division/Group Communication Summary</b>						
Function	Channel	RX Frequency N/W	RX Tone/NAC	TX Frequency N/W	TX Tone/NAC	Mode
COMMAND	ZONE 1 / CH2	159.1200N	NONE	151.3700N	100.0	A
AIR TO GROUND	ZONE 1 / CH4	169.2000N	NONE	169.2000N	NONE	A
TACTICAL	ZONE 1 / CH13	159.4125N	NONE	159.4125N	NONE	A
AIR TO GROUND	ZONE 1 / CH14	166.6750N	NONE	166.6750N	NONE	A
AIR TO GROUND	ZONE 1 / CH15	169.1500N	NONE	169.1500N	NONE	A
AIR GUARD	ZONE 1 / CH16	168.6250N	NONE	168.6250N	110.9	A
<b>9. Prepared By (Resource Unit Leader)</b>			<b>Approved By (Planning Section Chief)</b>		<b>Date</b>	<b>Time</b>
JEFF TURNER, RESL (T)			JOE BISHOP, PSC2 (T)		05/27/2017	0942

## Division/Group Assignment List (ICS 204 WF)

<b>1. Incident Name:</b>			<b>3.</b>			
WEST MIMS			<b>I</b>	<b>D</b>		
<b>2. Operational Period:</b> DAY SHIFT 0730-1930						
Date/Time From: 05/28/2017 0730      SUN		Date/Time To: 05/28/2017 1930      SUN				
<b>4. Operations Personnel</b>						
<b>PLANNING OPERATIONS CHIEF</b>	TRENT INGRAM PHIL DANIELS (T)			<b>OPERATIONS CHIEF</b>	RICK DOLAN BUCK KLINE	
<b>BRANCH DIRECTOR</b>	LANCE DELGADO			<b>DIVISION/GROUP SUPERVISOR</b>	WALTER BOWERS HEATHER GRIFFIN (T)	
<b>SAFETY</b>	LARRY GRUBBS CLAY STEPHENS (T)			<b>AIR TACTICAL GROUP SUPERVISOR</b>	MARK NUNEZ, KEN MCLAUGHLIN	
<b>7. Special Instructions:</b>						
<p><b>For IA protocol see page 7</b></p> <p>Medical Emergency Channel: Command  ETA for Ambulance to Scene:  Air: 20 – 30 mins  Ground: 10 - 15 mins Paved roads only.  IWI – IC or approved person will use Channel 16 (Air Guard) for contact with air ambulance  Air Ambulance landing zone to be determined by IWI – IC  Utilize engines to provide dust abatement, as needed, prior to air ambulance landing</p>						
<b>8. Division/Group Communication Summary</b>						
Function	Channel	RX Frequency N/W	RX Tone/NAC	TX Frequency N/W	TX Tone/NAC	Mode
COMMAND	ZONE 1 / CH2	159.1200N	NONE	151.3700N	100.0	A
AIR TO GROUND	ZONE 1 / CH4	169.2000N	NONE	169.2000N	NONE	A
TACTICAL	ZONE 1 / CH13	159.4125N	NONE	159.4125N	NONE	A
AIR TO GROUND	ZONE 1 / CH14	166.6750N	NONE	166.6750N	NONE	A
AIR TO GROUND	ZONE 1 / CH15	169.1500N	NONE	169.1500N	NONE	A
AIR GUARD	ZONE 1 / CH16	168.6250N	NONE	168.6250N	110.9	A
<b>9. Prepared By (Resource Unit Leader)</b>			<b>Approved By (Planning Section Chief)</b>		<b>Date</b>	<b>Time</b>
JEFF TURNER, RESL (T)			JOE BISHOP, PSC2 (T)		05/27/2017	0942

## Division/Group Assignment List (ICS 204 WF)

<b>1. Incident Name:</b>			<b>3.</b>			
WEST MIMS			<b>Branch:</b>		<b>Division/Group:</b>	
<b>2. Operational Period:</b> DAY SHIFT 0730-1930			<b>I</b>		<b>F</b>	
Date/Time From: 05/28/2017 0730      SUN		Date/Time To: 05/28/2017 1930      SUN				
<b>4. Operations Personnel</b>						
<b>PLANNING OPERATIONS CHIEF</b>		TRENT INGRAM PHIL DANIELS (T)		<b>OPERATIONS CHIEF</b>		RICK DOLAN FRED BOEHM
<b>BRANCH DIRECTOR</b>		LANCE DELGADO		<b>DIVISION/GROUP SUPERVISOR</b>		JASON FORTHOFFER JEFF COBURN (T)
<b>SAFETY</b>		LARRY GRUBBS CLAY STEPHENS (T)		<b>AIR TACTICAL GROUP SUPERVISOR</b>		MARK NUNEZ KEN MCLAUGHLIN
<b>5. Resources Assigned this Period</b>						
Strike Team / Task Force / Resource Designator		LWD	Leader	Number Persons	Drop Off PT./Time	Pick Up PT./Time
ENG6 BRUSH 143 E-769		05/29	RICARDO RENTERIA	6	ICP/0730	ICP/1930
ENG6 CO-PBS - 603 E-771		05/29	KEVIN EVANS	4	ICP/0730	ICP/1930
HEQB O-642		05/29	HUNTER BELL	1	ICP/0730	ICP/1930
MAST WESTCO E-865		06/05		1	ICP/0730	ICP/1930
MAST MULCHER/MASTICATOR VIN# B0062 E-834		06/05		1	ICP/0730	ICP/1930
MAST ROT RANCH E-74		05/30	MIKE PARRISH	1	ICP/0730	ICP/1930
BHOE ROT RANCH JD 6415 (MOWER) E-73		05/28	DARRELL CLARK	1	ICP/0730	ICP/1930
EMPF O-560		06/02	LIONEL VAN GRUP	1	ICP/0730	ICP/1930
SOF2 O-587		05/29	RON BERTSCH	1	ICP/0730	ICP/1930
<b>8. Division/Group Communication Summary</b>						
Function	Channel	RX Frequency N/W	RX Tone/NAC	TX Frequency N/W	TX Tone/NAC	Mode
COMMAND	ZONE 2 / CH 7	159.2700N	156.7	151.100N	100.0	A
AIR TO GROUND	ZONE 2 / CH 4	169.2000N	NONE	169.2000N	NONE	A
TACTICAL	ZONE 2 / CH 13	159.4125N	NONE	159.4125N	NONE	A
AIR TO GROUND	ZONE 2 / CH 14	166.6750N	NONE	166.6750N	NONE	A
AIR TO GROUND	ZONE 2 / CH 15	169.1500N	NONE	169.1500N	NONE	A
AIR GUARD	ZONE 2 / CH 16	168.6250N	NONE	168.6250N	110.9	A
<b>9. Prepared By (Resource Unit Leader)</b>			<b>Approved By (Planning Section Chief)</b>		<b>Date</b>	<b>Time</b>
JEFF TURNER, RESL (T)			JOE BISHOP, PSC2 (T)		05/27/2017	0942



## Division/Group Assignment List (ICS 204 WF)

<b>1. Incident Name:</b>			<b>3.</b>			
WEST MIMS			<b>Branch:</b>		<b>Division/Group:</b>	
<b>2. Operational Period:</b>			<b>I</b>			
<b>DAY SHIFT 0730-1930</b>			<b>F</b>			
Date/Time From: 05/28/2017 0730      SUN		Date/Time To: 05/28/2017 1930      SUN				
<b>4. Operations Personnel</b>						
<b>PLANNING OPERATIONS CHIEF</b>		TRENT INGRAM PHIL DANIELS (T)		<b>OPERATIONS CHIEF</b>		RICK DOLAN FRED BOEHM
<b>BRANCH DIRECTOR</b>		LANCE DELGADO		<b>DIVISION/GROUP SUPERVISOR</b>		JASON FORTHOFFER JEFF COBURN (T)
<b>SAFETY</b>		LARRY GRUBBS CLAY STEPHENS (T)		<b>AIR TACTICAL GROUP SUPERVISOR</b>		MARK NUNEZ KEN MCLAUGHLIN
<b>6. Control Operations/Work Assignments:</b>						
<b>Task</b>						
<ul style="list-style-type: none"> <li>• Assist private landowners and coordinate preparation of timberlands adjacent to the division.</li> <li>• Respond to any new starts within the division.</li> <li>• Monitor fire activity and location within the swamp.</li> <li>• Refresh Swamp Edge Break.</li> </ul>						
<b>Purpose</b>						
<ul style="list-style-type: none"> <li>• Keep fire west of Swamp Edge Break.</li> </ul>						
<b>End State</b>						
<ul style="list-style-type: none"> <li>• Fire activity that threatens Swamp Edge Break has been detected and appropriate action has been initiated.</li> <li>• Fire is contained by adequate control line to reduce threat to escape; minimizing damage to private timberlands, private lands, and other resource values at risk.</li> </ul>						
<b>7. Special Instructions:</b>						
Use caution when working around logging operations.						
<b>For IA protocol see page 8</b>						
Medical Emergency Channel: Command ETA for Ambulance to Scene: Air: 20 – 30 mins Ground: 10 - 15 mins Paved roads only. IWI – IC or approved person will use Channel 16 (Air Guard) for contact with air ambulance Air Ambulance landing zone to be determined by IWI – IC Utilize engines to provide dust abatement, as needed, prior to air ambulance landing						
<b>8. Division/Group Communication Summary</b>						
Function	Channel	RX Frequency N/W	RX Tone/NAC	TX Frequency N/W	TX Tone/NAC	Mode
COMMAND	ZONE 2 / CH 7	159.2700N	156.7	151.100N	100.0	A
AIR TO GROUND	ZONE 2 / CH 4	169.2000N	NONE	169.2000N	NONE	A
TACTICAL	ZONE 2 / CH 13	159.4125N	NONE	159.4125N	NONE	A
AIR TO GROUND	ZONE 2 / CH 14	166.6750N	NONE	166.6750N	NONE	A
AIR TO GROUND	ZONE 2 / CH 15	169.1500N	NONE	169.1500N	NONE	A
AIR GUARD	ZONE 2 / CH 16	168.6250N	NONE	168.6250N	110.9	A
<b>9. Prepared By (Resource Unit Leader)</b>			<b>Approved By (Planning Section Chief)</b>		<b>Date</b>	<b>Time</b>
JEFF TURNER, RESL (T)			JOE BISHOP, PSC2 (T)		05/27/2017	0942

## Division/Group Assignment List (ICS 204 WF)

<b>1. Incident Name:</b>			<b>3.</b>				
WEST MIMS			<b>III</b>	<b>Branch:</b>		<b>Division/Group:</b>	
<b>2. Operational Period:</b> DAY SHIFT 0730-1930				<b>INITIAL ATTACK EAST</b>			
Date/Time From: 05/28/2017 0730      SUN	Date/Time To: 05/28/2017 1930      SUN						
<b>4. Operations Personnel</b>							
<b>PLANNING OPERATIONS CHIEF</b>		TRENT INGRAM PHIL DANIELS (T)		<b>OPERATIONS CHIEF</b>		RICK DOLAN FRED BOEHM, BRYCE THOMAS (T)	
<b>BRANCH DIRECTOR</b>		MARC CRAIN CHRIS LUNDGREN (T)		<b>DIVISION/GROUP SUPERVISOR</b>		ROCKY CHESSER ARTURO GASDIK (T)	
<b>SAFETY</b>		LARRY CONNELL		<b>AIR TACTICAL GROUP SUPERVISOR</b>		MARK NUNEZ KEN MCLAUGHLIN	
<b>5. Resources Assigned this Period</b>							
Strike Team / Task Force / Resource Designator		LWD	Leader	Number Persons	Drop Off PT./Time	Pick Up PT./Time	
TFLD O-205		06/06	ADAM MCCULLOUGH	1	EAST CAMP/0730	EAST CAMP/1930	
TFLD(T) E-35.3		06/06	RANDALL MCLAIN	1	EAST CAMP/0730	EAST CAMP/1930	
ENG6 NC-POR PLE1 E-2		06/03	AIMEE MIDGETT	2	EAST CAMP/0730	EAST CAMP/1930	
ENG6 OK-4261 E-36		05/29	ANDY HEISEY	2	EAST CAMP/0730	EAST CAMP/1930	
TPL2 SC-CRR D-223 E-240			UNSTAFFED	1	EAST CAMP/0730	EAST CAMP/1930	
TPL2 NC-POR 750J PX3 E-131		06/07	KENNY POWELL	1	EAST CAMP/0730	EAST CAMP/1930	
TPL2 OKE 56 - TPL E-35		06/06	TRAVIS POLLARD	1	EAST CAMP/0730	EAST CAMP/1930	
TPL4 SMR #4441 E-508		05/28		1	EAST CAMP/0730	EAST CAMP/1930	
TPL2 GA-SAR D922 E-288		05/30	CHARLES JOHNSON	1	EAST CAMP/0730	EAST CAMP/1930	
DOZ2 OKE-54 E-34		05/30	FED PRIVETT	1	EAST CAMP/0730	EAST CAMP/1930	
ICT4		05/30	CORY BRYANT	1	EAST CAMP/0730	EAST CAMP/1930	
<b>8. Division/Group Communication Summary</b>							
Function	Channel	RX Frequency N/W	RX Tone/NAC	TX Frequency N/W	TX Tone/NAC	Mode	
COMMAND	ZONE 2 / CH 7	159.2700N	156.7	151.1000N	100.0	A	
COMMAND	ZONE 2 / CH 8	159.2700N	156.7	151.1000N	123.0	A	
AIR TO GROUND	ZONE 2 / CH 4	169.2000N	NONE	169.2000N	NONE	A	
TACTICAL	ZONE 2 / CH 12	159.4425N	NONE	159.4425N	NONE	A	
AIR TO GROUND	ZONE 2 / CH 14	166.6750N	NONE	166.6750N	NONE	A	
AIR TO GROUND	ZONE 2 / CH 15	169.1500N	NONE	169.1500N	NONE	A	
AIR GUARD	ZONE 2 / CH 16	168.6250N	NONE	168.6250N	110.9	A	
<b>9. Prepared By (Resource Unit Leader)</b>			<b>Approved By (Planning Section Chief)</b>			<b>Date</b>	<b>Time</b>
JEFF TURNER, RESL (T)			JOE BISHOP, PSC2 (T)			05/27/2017	0942

## Division/Group Assignment List (ICS 204 WF)

<b>1. Incident Name:</b>		<b>3.</b>				
WEST MIMS		<b>III</b>		<b>Division/Group:</b>  <b>INITIAL ATTACK EAST</b>		
<b>2. Operational Period:</b> <b>DAY SHIFT 0730-1930</b>						
Date/Time From: 05/28/2017 0730                   SUN	Date/Time To: 05/28/2017 1930                   SUN					
<b>4. Operations Personnel</b>						
<b>PLANNING OPERATIONS CHIEF</b>	TRENT INGRAM PHIL DANIELS (T)	<b>OPERATIONS CHIEF</b>	RICK DOLAN FRED BOEHM, BRYCE THOMAS (T)			
<b>BRANCH DIRECTOR</b>	MARC CRAIN CHRIS LUNDGREN (T)	<b>DIVISION/GROUP SUPERVISOR</b>	ROCKY CHESSEY ARTURO GASDIK (T)			
<b>SAFETY</b>	LARRY CONNELL	<b>AIR TACTICAL GROUP SUPERVISOR</b>	MARK NUNEZ KEN MCLAUGHLIN			
<b>6. Control Operations/Work Assignments:</b>						
<b>Task</b>						
<ul style="list-style-type: none"> <li>• Respond to any new starts as requested by OKR duty officer.</li> <li>• Coordinate initial attack action with assigned aviation and/or ground assets.</li> </ul>						
<b>Purpose</b>						
<ul style="list-style-type: none"> <li>• Ensure timely response on any initial attack within OKR jurisdictional boundaries and vicinity.</li> </ul>						
<b>End State</b>						
<ul style="list-style-type: none"> <li>• Fire activity has been detected and appropriate action has been initiated.</li> </ul>						
<b>7. Special Instructions:</b>						
<p>Contact Resource Advisors for any cultural or archeological needs, as well as, RCW concerns.          Ensure LCES is in place before operations begin and stay hydrated.          Drive defensively and with lights on at all times.          Communications: Use the tactical channel for the division you are in.          Staging on east side at Refuge office.</p> <p>Use caution when working around logging operations.</p> <p>Medical Emergency Channel: Command          ETA for Ambulance to Scene:          Air: 20 – 30 mins          Ground: 10 - 15 mins Paved roads only.          IWI – IC or approved person will use Channel 16 (Air Guard) for contact with air ambulance          Air Ambulance landing zone to be determined by IWI – IC          Utilize engines to provide dust abatement, as needed, prior to air ambulance landing</p> <p><b>For IA protocol see page 7</b></p>						
<b>8. Division/Group Communication Summary</b>						
Function	Channel	RX Frequency N/W	RX Tone/NAC	TX Frequency N/W	TX Tone/NAC	Mode
COMMAND	ZONE 2 / CH 7	159.2700N	156.7	151.1000N	100.0	A
COMMAND	ZONE 2 / CH 8	159.2700N	156.7	151.1000N	123.0	A
AIR TO GROUND	ZONE 2 / CH 4	169.2000N	NONE	169.2000N	NONE	A
TACTICAL	ZONE 2 / CH 12	159.4425N	NONE	159.4425N	NONE	A
AIR TO GROUND	ZONE 2 / CH 14	166.6750N	NONE	166.6750N	NONE	A
AIR TO GROUND	ZONE 2 / CH 15	169.1500N	NONE	169.1500N	NONE	A
AIR GUARD	ZONE 2 / CH 16	168.6250N	NONE	168.6250N	110.9	A
<b>9. Prepared By (Resource Unit Leader)</b>		<b>Approved By (Planning Section Chief)</b>			<b>Date</b>	<b>Time</b>
JEFF TURNER, RESL (T)		JOE BISHOP, PSC2 (T)			05/27/2017	0942

## Division/Group Assignment List (ICS 204 WF)

<b>1. Incident Name:</b>			<b>3.</b>			
WEST MIMS			<b>III</b>		<b>M/N</b>	
<b>2. Operational Period:</b> DAY SHIFT 0730-1930						
Date/Time From: 05/28/2017 0730      SUN		Date/Time To: 05/28/2017 1930      SUN				
<b>4. Operations Personnel</b>						
<b>PLANNING OPERATIONS CHIEF</b>		TRENT INGRAM PHIL DANIELS (T)		<b>OPERATIONS CHIEF</b>		RICK DOLAN, FRED BOEHM BRYCE THOMAS (T)
<b>BRANCH DIRECTOR</b>		MARC CRAIN CHRIS LUNDGREN (T)		<b>DIVISION/GROUP SUPERVISOR</b>		KAREN SCHOLL CHRIS RANKIN (T)
<b>SAFETY</b>		LARRY CONNELL		<b>AIR TACTICAL GROUP SUPERVISOR</b>		MARK NUNEZ, KEN MCLAUGHLIN
<b>5. Resources Assigned this Period</b>						
Strike Team / Task Force / Resource Designator		LWD	Leader	Number Persons	Drop Off PT./Time	Pick Up PT./Time
TFLD O-385		05/30	MARVIN ROYBAL	1	EAST CAMP/0730	EAST CAMP/1930
TFLD(T) O-670		06/01	MIKE BROD	1	EAST CAMP/0730	EAST CAMP/1930
ENG6 AR-OZF - SYL - E-671 E-283			UNSTAFFED	3	EAST CAMP/0730	EAST CAMP/1930
ENG6 NAX - BRUSH 7-4 E-848		05/31	MAX BORINO	3	EAST CAMP/0730	EAST CAMP/1930
WTS2 WET 'N RED, LLC - 58592 E-365		06/14	ALLEN WEST	2	EAST CAMP/0730	EAST CAMP/1930
TFLD O-725		06/02	JASON HAYWOOD	1	EAST CAMP/0730	EAST CAMP/1930
TFLD(T) O-643		05/29	JAKE GOEBEL	1	EAST CAMP/0730	EAST CAMP/1930
ENG3 - 335 E-756		05/31	WILLIAM MARCKS		EAST CAMP/0730	EAST CAMP/1930
ENG6 TRINIDAD FIRE 2930 E-774		05/29	MIGUEL ORTIZ	3	EAST CAMP/0730	EAST CAMP/1930
ENG6 WY-MBF - 694 E-776		06/03	JOSH MCGEE	3	EAST CAMP/0730	EAST CAMP/1930
WTT2 AZ-COF 4-74 E-600		05/28	JASON KOLB	2	EAST CAMP/0730	EAST CAMP/1930
STEQ O-761		06/08	DERRICK W DUNCAN	1	EAST CAMP/0730	EAST CAMP/1930
<b>8. Division/Group Communication Summary</b>						
Function	Channel	RX Frequency N/W	RX Tone/NAC	TX Frequency N/W	TX Tone/NAC	Mode
COMMAND	ZONE 2 / CH 3	159.1200N	NONE	151.3700N	82.5	A
AIR TO GROUND	ZONE 2 / CH 4	169.2000N	NONE	169.2000N	NONE	A
TACTICAL	ZONE 2 / CH 9	159.2850N	NONE	159.2850N	156.7	A
AIR TO GROUND	ZONE 2 / CH 14	166.6750N	NONE	166.6750N	NONE	A
AIR TO GROUND	ZONE 2 / CH 15	169.1500N	NONE	169.1500N	NONE	A
AIR GUARD	ZONE 2 / CH 16	168.6250N	NONE	168.6250N	110.9	A
<b>9. Prepared By (Resource Unit Leader)</b>			<b>Approved By (Planning Section Chief)</b>		<b>Date</b>	<b>Time</b>
JEFF TURNER, RESL (T)			JOE BISHOP, PSC2 (T)		05/27/2017	0942

## Division/Group Assignment List (ICS 204 WF)

<b>1. Incident Name:</b>			<b>3.</b>			
WEST MIMS			<b>III</b>		<b>M/N</b>	
<b>2. Operational Period:</b> DAY SHIFT 0730-1930						
Date/Time From: 05/28/2017 0730      SUN		Date/Time To: 05/28/2017 1930      SUN				
<b>4. Operations Personnel</b>						
<b>PLANNING OPERATIONS CHIEF</b>		TRENT INGRAM PHIL DANIELS (T)		<b>OPERATIONS CHIEF</b>		RICK DOLAN, FRED BOEHM BRYCE THOMAS (T)
<b>BRANCH DIRECTOR</b>		MARC CRAIN CHRIS LUNDGREN (T)		<b>DIVISION/GROUP SUPERVISOR</b>		KAREN SCHOLL CHRIS RANKIN (T)
<b>SAFETY</b>		LARRY CONNELL		<b>AIR TACTICAL GROUP SUPERVISOR</b>		MARK NUNEZ, KEN MCLAUGHLIN
<b>5. Resources Assigned this Period</b>						
Strike Team / Task Force / Resource Designator		LWD	Leader	Number Persons	Drop Off PT./Time	Pick Up PT./Time
FOBS O-690		06/01	REED HECKLY	1	ICP/0730	ICP/1930
FOBS(T) O-408		06/08	ADAM HUMBACH	1	ICP/0730	ICP/1930
FOBS (T) O-573		05/27	OLIVER WAHLQUIST	1	ICP/0730	ICP/1930
EMPF O-753		06/08	WADE ALLEN	1	EAST CAMP/0730	EAST CAMP/1930
EMPF E-316.2		05/30	STEVE WOLFSTICH	1	EAST CAMP/0730	EAST CAMP/1930
SOF2 O-589		05/27	GALEN YOUNG	1	EAST CAMP/0730	EAST CAMP/1930
<b>6. Control Operations/Work Assignments:</b>						
<b>Task</b>						
<ul style="list-style-type: none"> <li>• Prepare for strategic firing of control lines.</li> <li>• Respond to any new starts within the division.</li> <li>• Patrol and mop up fuels appropriate to fuel type and anticipated weather and fire behavior.</li> </ul>						
<b>Purpose</b>						
<ul style="list-style-type: none"> <li>• Keep fire west of Swamp Edge Break.</li> </ul>						
<b>End State</b>						
<ul style="list-style-type: none"> <li>• Fire is contained by adequate control line to reduce threat to escape; minimizing damage to private timberlands, private lands, and other resource values at risk.</li> </ul>						
<b>8. Division/Group Communication Summary</b>						
Function	Channel	RX Frequency N/W	RX Tone/NAC	TX Frequency N/W	TX Tone/NAC	Mode
COMMAND	ZONE 2 / CH 3	159.1200N	NONE	151.3700N	82.5	A
AIR TO GROUND	ZONE 2 / CH 4	169.2000N	NONE	169.2000N	NONE	A
TACTICAL	ZONE 2 / CH 9	159.2850N	NONE	159.2850N	156.7	A
AIR TO GROUND	ZONE 2 / CH 14	166.6750N	NONE	166.6750N	NONE	A
AIR TO GROUND	ZONE 2 / CH 15	169.1500N	NONE	169.1500N	NONE	A
AIR GUARD	ZONE 2 / CH 16	168.6250N	NONE	168.6250N	110.9	A
<b>9. Prepared By (Resource Unit Leader)</b>			<b>Approved By (Planning Section Chief)</b>		<b>Date</b>	<b>Time</b>
JEFF TURNER, RESL (T)			JOE BISHOP, PSC2 (T)		05/27/2017	0942

## Division/Group Assignment List (ICS 204 WF)

<b>1. Incident Name:</b>			<b>3.</b>			
WEST MIMS			<b>Branch:</b>		<b>Division/Group:</b>	
<b>2. Operational Period:</b> <b>DAY SHIFT 0730-1930</b>			<b>III</b>		<b>M/N</b>	
Date/Time From: 05/28/2017 0730	SUN	Date/Time To: 05/28/2017 1930	SUN			
<b>4. Operations Personnel</b>						
<b>PLANNING OPERATIONS CHIEF</b>		TRENT INGRAM PHIL DANIELS (T)		<b>OPERATIONS CHIEF</b>		
<b>BRANCH DIRECTOR</b>		MARC CRAIN CHRIS LUNDGREN (T)		<b>DIVISION/GROUP SUPERVISOR</b>		
<b>SAFETY</b>		LARRY CONNELL		<b>AIR TACTICAL GROUP SUPERVISOR</b>		
				RICK DOLAN, FRED BOEHM BRYCE THOMAS (T)		
				KAREN SCHOLL CHRIS RANKIN (T)		
				MARK NUNEZ, KEN MCLAUGHLIN		
<b>7. Special Instructions:</b>						
Ensure LCES is in place before operations begin and stay hydrated. Drive defensively and with lights on at all times. Identify escape routes.						
Use caution when working around logging operations.						
<b>For IA protocol see page 7</b>						
Medical Emergency Channel: Command						
ETA for Ambulance to Scene:						
Air: 20 – 30 mins						
Ground: 10 - 15 mins Paved roads only.						
IWI – IC or approved person will use Channel 16 (Air Guard) for contact with air ambulance						
Air Ambulance landing zone to be determined by IWI – IC						
Utilize engines to provide dust abatement, as needed, prior to air ambulance landing						
<b>8. Division/Group Communication Summary</b>						
Function	Channel	RX Frequency N/W	RX Tone/NAC	TX Frequency N/W	TX Tone/NAC	Mode
COMMAND	ZONE 2 / CH 3	159.1200N	NONE	151.3700N	82.5	A
AIR TO GROUND	ZONE 2 / CH 4	169.2000N	NONE	169.2000N	NONE	A
TACTICAL	ZONE 2 / CH 9	159.2850N	NONE	159.2850N	156.7	A
AIR TO GROUND	ZONE 2 / CH 14	166.6750N	NONE	166.6750N	NONE	A
AIR TO GROUND	ZONE 2 / CH 15	169.1500N	NONE	169.1500N	NONE	A
AIR GUARD	ZONE 2 / CH 16	168.6250N	NONE	168.6250N	110.9	A
<b>9. Prepared By (Resource Unit Leader)</b>			<b>Approved By (Planning Section Chief)</b>		<b>Date</b>	<b>Time</b>
JEFF TURNER, RESL (T)			JOE BISHOP, PSC2 (T)		05/27/2017	0942

## Division/Group Assignment List (ICS 204 WF)

<b>1. Incident Name:</b>			<b>3.</b>			
WEST MIMS			<b>Branch:</b>		<b>Division/Group:</b>	
<b>2. Operational Period:</b> DAY SHIFT 0730-1930			<b>III</b>		<b>O</b>	
Date/Time From: 05/28/2017 0730      SUN		Date/Time To: 05/28/2017 1930      SUN				
<b>4. Operations Personnel</b>						
<b>PLANNING OPERATIONS CHIEF</b>		TRENT INGRAM PHIL DANIELS (T)		<b>OPERATIONS CHIEF</b>		RICK DOLAN FRED BOEHM, BRYCE THOMAS (T)
<b>BRANCH DIRECTOR</b>		MARC CRAIN CHRIS LUNDGREN (T)		<b>DIVISION/GROUP SUPERVISOR</b>		SHAWN ALEXANDER MICHAEL GUE (T)
<b>SAFETY</b>		LARRY CONNELL		<b>AIR TACTICAL GROUP SUPERVISOR</b>		MARK NUNEZ, KEN MCLAUGHLIN
<b>5. Resources Assigned this Period</b>						
Strike Team / Task Force / Resource Designator		LWD	Leader	Number Persons	Drop Off PT./Time	Pick Up PT./Time
TFLD O-592		05/28	DALE MIDDLETON	1	EAST CAMP/0730	EAST CAMP/1930
ENG6 - STH ARK 112 E-773		05/29	MELISSA FRIESS	3	EAST CAMP/0730	EAST CAMP/1930
ENG6 - MES #6198 E-871		06/02	DANIEL PERKINS		EAST CAMP/0730	EAST CAMP/1930
ENG6 - FWS - 462 E-261		06/03	CHRISTOPHER NOTHSTINE	3	EAST CAMP/0730	EAST CAMP/1930
ENG6 REDBIRD E6171 E-447		06/06	RUPERT NOWLIN	2	EAST CAMP/0730	EAST CAMP/1930
TFLD O-635		05/31	BRIAN ANDERSON	1	EAST CAMP/0730	EAST CAMP/1930
ENG6 - 611 E-663		05/29	JORDAN BLACK	3	EAST CAMP/0730	EAST CAMP/1930
ENG6 - NMLNF621 - SACRAMENTO RD E-765		05/30	TIM MCELHNEY	4	EAST CAMP/0730	EAST CAMP/1930
ENG6 J3 CONTRACTING - 07 E-732		05/31	ANTHONY PARLIC	3	EAST CAMP/0730	EAST CAMP/1930
ENG6 J3 CONTRACTING - 12 E-733		05/31	LANCE WOLLEBAEK	3	EAST CAMP/0730	EAST CAMP/1930
TFLD O-594		06/05	MICHAEL SMITH	1	EAST CAMP/0730	EAST CAMP/1930
ENG6 - 161 E-656		05/28	TOD BENNETT	3	EAST CAMP/0730	EAST CAMP/1930
ENG6 - BOULDER COUNTY SHERIFF - 6531 E-847		05/31	KENYON SHEPHARD	6	EAST CAMP/0730	EAST CAMP/1930
WTS2 - BONNELL SAND & GRAVEL I E-366		06/06	HARLIN VINCENT	1	EAST CAMP/0730	EAST CAMP/1930
<b>8. Division/Group Communication Summary</b>						
Function	Channel	RX Frequency N/W	RX Tone/NAC	TX Frequency N/W	TX Tone/NAC	Mode
COMMAND	ZONE 2 / CH 3	159.1200N	NONE	151.3700N	82.5	A
AIR TO GROUND	ZONE 2 / CH 4	169.2000N	NONE	169.2000N	NONE	A
TACTICAL	ZONE 2 / CH 11	163.7125N	NONE	163.7125N	NONE	A
AIR TO GROUND	ZONE 2 / CH 14	166.6750N	NONE	166.6750N	NONE	A
AIR TO GROUND	ZONE 2 / CH 15	169.1500N	NONE	169.1500N	NONE	A
AIR GUARD	ZONE 2 / CH 16	168.6250N	NONE	168.6250N	110.9	A
<b>9. Prepared By (Resource Unit Leader)</b>			<b>Approved By (Planning Section Chief)</b>		<b>Date</b>	<b>Time</b>
JEFF TURNER, RESL(T)			JOE BISHOP, PSC2 (T)		05/27/2017	0942

## Division/Group Assignment List (ICS 204 WF)

<b>1. Incident Name:</b>			<b>3.</b>			
WEST MIMS			<b>III</b>		<b>O</b>	
<b>2. Operational Period:</b> <b>DAY SHIFT 0730-1930</b>						
Date/Time From: 05/28/2017 0730                    SUN		Date/Time To: 05/28/2017 1930                    SUN				
<b>4. Operations Personnel</b>						
<b>PLANNING OPERATIONS CHIEF</b>		TRENT INGRAM PHIL DANIELS (T)		<b>OPERATIONS CHIEF</b>		RICK DOLAN FRED BOEHM, BRYCE THOMAS (T)
<b>BRANCH DIRECTOR</b>		MARC CRAIN CHRIS LUNDGREN (T)		<b>DIVISION/GROUP SUPERVISOR</b>		SHAWN ALEXANDER MICHAEL GUE (T)
<b>SAFETY</b>		LARRY CONNELL		<b>AIR TACTICAL GROUP SUPERVISOR</b>		MARK NUNEZ, KEN MCLAUGHLIN
<b>5. Resources Assigned this Period</b>						
Strike Team / Task Force / Resource Designator		LWD	Leader	Number Persons	Drop Off PT./Time	Pick Up PT./Time
STEQ O-679		06/03	DAVID BROWN	1	EAST CAMP/0730	EAST CAMP/1930
TPL3 GFC 3266 E-370		06/03	SPENCER WOOD	2	EAST CAMP/0730	EAST CAMP/1930
TPL2 GFC 3307 E-371		06/03	CHRIS W MULLIS	2	EAST CAMP/0730	EAST CAMP/1930
TPL2 GFC 3295 E-372		06/03	BRIAN THOMPSON	2	EAST CAMP/0730	EAST CAMP/1930
TPL4 MSR2 E-594		06/03		1	EAST CAMP/0730	EAST CAMP/1930
DO22 650K - VIN# 271777 E-528		06/08		1	EAST CAMP/0730	EAST CAMP/1930
FOBS O-691		05/30	BRYAN BOATMAN	1	ICP/0730	ICP/1930
FOBS (T) O-693		06/01	EVAN HAUGAN	1	ICP/0730	ICP/1930
EMPF O-752		06/09	BRYAN WARNER	1	EAST CAMP/0730	EAST CAMP/1930
SOF2 O-589		06/03	GALEN R YOUNG	1	EAST CAMP/0730	EAST CAMP/1930
<b>6. Control Operations/Work Assignments:</b>						
<b>Task</b>						
<ul style="list-style-type: none"> <li>• Respond to any new starts within the division.</li> <li>• Patrol and mop up fuels appropriate to fuel type and anticipated weather and fire behavior.</li> </ul>						
<b>Purpose</b>						
<ul style="list-style-type: none"> <li>• Keep fire within established fire containment lines.</li> </ul>						
<b>8. Division/Group Communication Summary</b>						
Function	Channel	RX Frequency N/W	RX Tone/NAC	TX Frequency N/W	TX Tone/NAC	Mode
COMMAND	ZONE 2 / CH 3	159.1200N	NONE	151.3700N	82.5	A
AIR TO GROUND	ZONE 2 / CH 4	169.2000N	NONE	169.2000N	NONE	A
TACTICAL	ZONE 2 / CH 11	163.7125N	NONE	163.7125N	NONE	A
AIR TO GROUND	ZONE 2 / CH 14	166.6750N	NONE	166.6750N	NONE	A
AIR TO GROUND	ZONE 2 / CH 15	169.1500N	NONE	169.1500N	NONE	A
AIR GUARD	ZONE 2 / CH 16	168.6250N	NONE	168.6250N	110.9	A
<b>9. Prepared By (Resource Unit Leader)</b>			<b>Approved By (Planning Section Chief)</b>		<b>Date</b>	<b>Time</b>
JEFF TURNER, RESL(T)			JOE BISHOP, PSC2 (T)		05/27/2017	0942



## Division/Group Assignment List (ICS 204 WF)

<b>1. Incident Name:</b>			<b>3.</b>			
WEST MIMS			<b>III</b>	<b>O</b>		
<b>2. Operational Period:</b> DAY SHIFT 0730-1930						
Date/Time From: 05/28/2017 0730	SUN	Date/Time To: 05/28/2017 1930	SUN			
<b>4. Operations Personnel</b>						
<b>PLANNING OPERATIONS CHIEF</b>	TRENT INGRAM PHIL DANIELS (T)		<b>OPERATIONS CHIEF</b>	RICK DOLAN FRED BOEHM, BRYCE THOMAS (T)		
<b>BRANCH DIRECTOR</b>	MARC CRAIN CHRIS LUNDGREN (T)		<b>DIVISION/GROUP SUPERVISOR</b>	SHAWN ALEXANDER MICHAEL GUE (T)		
<b>SAFETY</b>	LARRY CONNELL		<b>AIR TACTICAL GROUP SUPERVISOR</b>	MARK NUNEZ, KEN MCLAUGHLIN		
<b>6. Control Operations/Work Assignments:</b>						
<p><b>End State</b></p> <ul style="list-style-type: none"> <li>• Fire is contained by adequate control line to reduce threat to escape; minimizing damage to private timberlands, private lands, and other resource values at risk.</li> </ul>						
<b>7. Special Instructions:</b>						
<p>Ensure LCES are in place before operations begin and stay hydrated. Drive defensively and with lights on at all times. Identify escape routes.</p> <p>Use caution when working around logging operations.</p> <p><b>For IA protocol see page 7</b></p> <p>Medical Emergency Channel: Command  ETA for Ambulance to Scene:  Air: 20 – 30 mins  Ground: 10 - 15 mins Paved roads only.  IWI – IC or approved person will use Channel 16 (Air Guard) for contact with air ambulance  Air Ambulance landing zone to be determined by IWI – IC  Utilize engines to provide dust abatement, as needed, prior to air ambulance landing</p>						
<b>8. Division/Group Communication Summary</b>						
Function	Channel	RX Frequency N/W	RX Tone/NAC	TX Frequency N/W	TX Tone/NAC	Mode
COMMAND	ZONE 2 / CH 3	159.1200N	NONE	151.3700N	82.5	A
AIR TO GROUND	ZONE 2 / CH 4	169.2000N	NONE	169.2000N	NONE	A
TACTICAL	ZONE 2 / CH 11	163.7125N	NONE	163.7125N	NONE	A
AIR TO GROUND	ZONE 2 / CH 14	166.6750N	NONE	166.6750N	NONE	A
AIR TO GROUND	ZONE 2 / CH 15	169.1500N	NONE	169.1500N	NONE	A
AIR GUARD	ZONE 2 / CH 16	168.6250N	NONE	168.6250N	110.9	A
<b>9. Prepared By (Resource Unit Leader)</b>			<b>Approved By (Planning Section Chief)</b>		<b>Date</b>	<b>Time</b>
JEFF TURNER, RESL(T)			JOE BISHOP, PSC2 (T)		05/27/2017	0942

## Division/Group Assignment List (ICS 204 WF)

<b>1. Incident Name:</b>			<b>3.</b>			
WEST MIMS			<b>I</b>		<b>Division/Group: INITIAL ATTACK WEST</b>	
<b>2. Operational Period:</b> DAY SHIFT 0730-1930						
Date/Time From: 05/28/2017 0730      SUN		Date/Time To: 05/28/2017 1930      SUN				
<b>4. Operations Personnel</b>						
<b>PLANNING OPERATIONS CHIEF</b>		TRENT INGRAM PHIL DANIELS (T)		<b>OPERATIONS CHIEF</b>		
<b>BRANCH DIRECTOR</b>		LANCE DELGADO		<b>DIVISION/GROUP SUPERVISOR</b>		
<b>SAFETY</b>		LARRY GRUBBS CLAY STEPHENS (T)		<b>AIR TACTICAL GROUP SUPERVISOR</b>		
				RICK DOLAN BUCK KLINE		
				RONALD L CALHOUN		
				MARK NUNEZ KEN MCLAUGHLIN		
<b>5. Resources Assigned this Period</b>						
Strike Team / Task Force / Resource Designator		LWD	Leader	Number Persons	Drop Off PT./Time	Pick Up PT./Time
ENG6 KY-KYS - 310 E-660			UNSTAFFED		FARGO ICP/0730	FARGO ICP/1930
STEQ O-565		05/31	AL POTTS	1	FARGO ICP/0730	FARGO ICP/1930
TPL4 GFC 3285 E-824		05/31	TERRY K HEARD	1	FARGO ICP/0730	FARGO ICP/1930
TPL4 GFC 3212 E-825		05/31	BRUCE E FREE	1	FARGO ICP/0730	FARGO ICP/1930
TPL4 GFC 2230 E-826		05/31	CHRISTOPHER SCOTT BRANNEN	1	FARGO ICP/0730	FARGO ICP/1930
STEQ O-762		06/08	HILTON BENNETT	1	FARGO ICP/0730	FARGO ICP/1930
TPL2 GFC 1413 E-981		06/08	SHAWN SPIKES	1	FARGO ICP/0730	FARGO ICP/1930
TPL2 GFC 1414 E-982		06/08	JASON BOHANNON	1	FARGO ICP/0730	FARGO ICP/1930
TPL3 GFC 1547 E-983		06/08	ORION GIBSON	1	FARGO ICP/0730	FARGO ICP/1930
DOZ1 HUDSON 7699 E-788		05/30	CHAD WILEY	2	FARGO ICP/0730	FARGO ICP/1930
<b>8. Division/Group Communication Summary</b>						
Function	Channel	RX Frequency N/W	RX Tone/NAC	TX Frequency N/W	TX Tone/NAC	Mode
COMMAND	ZONE 2 / CH 7	159.2700N	156.7	151.1000N	100.0	A
COMMAND	ZONE 2 / CH 8	159.2700N	156.7	151.1000N	123.0	A
TACTICAL	ZONE 2 / CH 11	163.1000N	NONE	163.1000N	NONE	A
AIR TO GROUND	ZONE 2 / CH 4	169.2000N	NONE	169.2000N	NONE	A
AIR TO GROUND	ZONE 2 / CH 14	166.6750N	NONE	166.6750N	NONE	A
AIR TO GROUND	ZONE 2 / CH 15	169.1500N	NONE	169.1500N	NONE	A
AIR GUARD	ZONE 2 / CH 16	168.6250N	NONE	168.6250N	110.9	A
<b>9. Prepared By (Resource Unit Leader)</b>			<b>Approved By (Planning Section Chief)</b>		<b>Date</b>	<b>Time</b>
JEFF TURNER, RESL (T)			JOE BISHOP, PSC2 (T)		05/27/2017	0942



## Division/Group Assignment List (ICS 204 WF)

<b>1. Incident Name:</b>		<b>3.</b>				
WEST MIMS		<b>I</b>		<b>Division/Group: INITIAL ATTACK WEST</b>		
<b>2. Operational Period:</b> DAY SHIFT 0730-1930						
Date/Time From: 05/28/2017 0730	SUN	Date/Time To: 05/28/2017 1930	SUN			
<b>4. Operations Personnel</b>						
<b>PLANNING OPERATIONS CHIEF</b>		TRENT INGRAM PHIL DANIELS (T)		<b>OPERATIONS CHIEF</b>		RICK DOLAN BUCK KLINE
<b>BRANCH DIRECTOR</b>		LANCE DELGADO		<b>DIVISION/GROUP SUPERVISOR</b>		RONALD L CALHOUN
<b>SAFETY</b>		LARRY GRUBBS CLAY STEPHENS (T)		<b>AIR TACTICAL GROUP SUPERVISOR</b>		MARK NUNEZ KEN MCLAUGHLIN
<b>6. Control Operations/Work Assignments:</b>						
<b>Task</b>						
<ul style="list-style-type: none"> <li>• Respond to any new starts as requested by OKR duty officer.</li> <li>• Coordinate initial attack action with assigned aviation and/or ground assets.</li> </ul>						
<b>Purpose</b>						
<ul style="list-style-type: none"> <li>• Ensure timely response on any initial attack within OKR jurisdictional boundaries and vicinity.</li> </ul>						
<b>End State</b>						
<ul style="list-style-type: none"> <li>• Fire activity has been detected and appropriate action has been initiated.</li> </ul>						
<b>7. Special Instructions:</b>						
<p>Contact Resource Advisors for any cultural or archeological needs, as well as, RCW concerns.                  Ensure LCES is in place before operations begin and stay hydrated.                  Drive defensively and with lights on at all times.                  Communications: Use the tactical channel for the division you are in.                  Staging on east side at Refuge office.</p> <p>Use caution when working around logging operations.</p> <p>Medical Emergency Channel: Command                  ETA for Ambulance to Scene:                  Air: 20 – 30 mins                  Ground: 10 - 15 mins Paved roads only.                  IWI – IC or approved person will use Channel 16 (Air Guard) for contact with air ambulance                  Air Ambulance landing zone to be determined by IWI – IC                  Utilize engines to provide dust abatement, as needed, prior to air ambulance landing</p> <p><b>For IA protocol see page 7</b></p>						
<b>8. Division/Group Communication Summary</b>						
Function	Channel	RX Frequency N/W	RX Tone/NAC	TX Frequency N/W	TX Tone/NAC	Mode
COMMAND	ZONE 2 / CH 7	159.2700N	156.7	151.1000N	100.0	A
COMMAND	ZONE 2 / CH 8	159.2700N	156.7	151.1000N	123.0	A
TACTICAL	ZONE 2 / CH 11	163.1000N	NONE	163.1000N	NONE	A
AIR TO GROUND	ZONE 2 / CH 4	169.2000N	NONE	169.2000N	NONE	A
AIR TO GROUND	ZONE 2 / CH 14	166.6750N	NONE	166.6750N	NONE	A
AIR TO GROUND	ZONE 2 / CH 15	169.1500N	NONE	169.1500N	NONE	A
AIR GUARD	ZONE 2 / CH 16	168.6250N	NONE	168.6250N	110.9	A
<b>9. Prepared By (Resource Unit Leader)</b>			<b>Approved By (Planning Section Chief)</b>		<b>Date</b>	<b>Time</b>
JEFF TURNER, RESL (T)			JOE BISHOP, PSC2 (T)		05/27/2017	0942

## Division/Group Assignment List (ICS 204 WF)

<b>1. Incident Name:</b>			<b>3.</b>			
WEST MIMS			<b>IV</b>		<b>A</b>	
<b>2. Operational Period:</b> DAY SHIFT 0730-1930						
Date/Time From: 05/28/2017 0730      SUN		Date/Time To: 05/28/2017 1930      SUN				
<b>4. Operations Personnel</b>						
<b>PLANNING OPERATIONS CHIEF</b>		TRENT INGRAM PHIL DANIELS (T)		<b>OPERATIONS CHIEF</b>		
				RICK DOLAN FRED BOEHM, BRYCE THOMAS (T)		
<b>BRANCH DIRECTOR</b>		STEVE MILLER		<b>DIVISION/GROUP SUPERVISOR</b>		
				TOM TALBOT JEFF BOSTWICK (T)		
<b>SAFETY</b>		LARRY CONNELL		<b>AIR TACTICAL GROUP SUPERVISOR</b>		
				MARK NUNEZ, KEN MCLAUGHLIN		
<b>5. Resources Assigned this Period</b>						
Strike Team / Task Force / Resource Designator		LWD	Leader	Number Persons	Drop Off PT./Time	Pick Up PT./Time
TFLD O-606		06/04	DAREK PEPPE	1	EAST CAMP/0730	EAST CAMP 1930/
ENG3 CO-PBS DEER MOUNTAIN FPD 12 E-280		06/06	JOSEPH CRAIG WATTS	3	EAST CAMP/0730	EAST CAMP 1930/
ENG6 MT-KNF 631 E-285		05/31	JULIAN ADAUTO	5	EAST CAMP/0730	EAST CAMP 1930/
ENG6 MS-MNF 6171 E-77		06/05	DAVID GIBSON	3	EAST CAMP/0730	EAST CAMP 1930/
ENG6 AR-OZF 631 E-56		06/04	DARRYL BRIGHTWELL	3	EAST CAMP/0730	EAST CAMP 1930/
ENG6 J3 PVT 07 E-731		05/31	JACOB VAVRICKA	3	EAST CAMP/0730	EAST CAMP 1930/
ENG6 KY-KYS 410 E-661			UNSTAFFED		EAST CAMP/0730	EAST CAMP/1930
WTS2 TIPTON & YOUNG E-347		06/05	ROBERT COYLE	1	EAST CAMP/0730	EAST CAMP 1930/
WTS2 STRICKLANDS E-272		06/05	JOHN TINER	1	EAST CAMP/0730	EAST CAMP 1930/
TFLD O-656		05/31	KEN COOPER	1	EAST CAMP/0730	EAST CAMP 1930/
TFLD (T) O-672		05/30	JAMIE TYSON	1	EAST CAMP/0730	EAST CAMP 1930/
TPL4 8191 - HUNTSVILLE E-570		06/07	BERNHARD BUCKNER	2	EAST CAMP/0730	EAST CAMP 1930/
TX FOREST SERVICE TRACTOR PLOW -T4 E-471		06/07	MAYNARD WILLIAMS	2	EAST CAMP/0730	EAST CAMP 1930/
TPL4 6192 - NEW BOSTON E-467		06/07	JONATHON KELLER	2	EAST CAMP/0730	EAST CAMP 1930/
TPL4 7292 - JACKSONVILLE E-571		05/26	TERRY RICHARDSON		EAST CAMP/0730	EAST CAMP 1930/
<b>8. Division/Group Communication Summary</b>						
Function	Channel	RX Frequency N/W	RX Tone/NAC	TX Frequency N/W	TX Tone/NAC	Mode
AIR TO GROUND	ZONE 2 / CH 4	169.2000N	NONE	169.2000N	NONE	A
COMMAND	ZONE 2 / CH 8	159.2700N	156.7	151.1000N	123.0	A
TACTICAL	ZONE 2 / CH 12	159.4425N	NONE	159.4425N	NONE	A
AIR TO GROUND	ZONE 2 / CH 14	166.6750N	NONE	166.6750N	NONE	A
AIR TO GROUND	ZONE 2 / CH 15	169.1500N	NONE	169.1500N	NONE	A
AIR GUARD	ZONE 2 / CH 16	168.6250N	NONE	168.6250N	110.9	A
<b>9. Prepared By (Resource Unit Leader)</b>			<b>Approved By (Planning Section Chief)</b>		<b>Date</b>	<b>Time</b>
JEFF TURNER, RESL (T)			JOE BISHOP, PSC2 (T)		05/27/2017	0942

## Division/Group Assignment List (ICS 204 WF)

<b>1. Incident Name:</b>			<b>3.</b>			
WEST MIMS			<b>IV</b>		<b>A</b>	
<b>2. Operational Period:</b> DAY SHIFT 0730-1930						
Date/Time From: 05/28/2017 0730      SUN		Date/Time To: 05/28/2017 1930      SUN				
<b>4. Operations Personnel</b>						
<b>PLANNING OPERATIONS CHIEF</b>		TRENT INGRAM PHIL DANIELS (T)		<b>OPERATIONS CHIEF</b>		RICK DOLAN FRED BOEHM, BRYCE THOMAS (T)
<b>BRANCH DIRECTOR</b>		STEVE MILLER		<b>DIVISION/GROUP SUPERVISOR</b>		TOM TALBOT JEFF BOSTWICK (T)
<b>SAFETY</b>		LARRY CONNELL		<b>AIR TACTICAL GROUP SUPERVISOR</b>		MARK NUNEZ, KEN MCLAUGHLIN
<b>5. Resources Assigned this Period</b>						
Strike Team / Task Force / Resource Designator		LWD	Leader	Number Persons	Drop Off PT./Time	Pick Up PT./Time
FOBS O-694		06/01	JASON KAMMANN	1	ICP/0730	ICP/1930
FOBS (T) O-696		06/01	HAPPY HOPPE	1	IPC/0730	ICP/1930
EMPF E-375.2		06/13	MARTIN CARRILLO	1	EAST CAMP/0730	EAST CAMP 1930/
SOF2 O-540 229-561-4259		06/11	JACK BENZILIO	1	EAST CAMP/0730	EAST CAMP 1930/
<b>6. Control Operations/Work Assignments:</b>						
<b>Task</b>						
<ul style="list-style-type: none"> <li>• Patrol and mop up fuels appropriate to fuel type and anticipated weather and fire behavior.</li> <li>• Respond to any new starts within the division.</li> </ul>						
<b>Purpose</b>						
<ul style="list-style-type: none"> <li>• Keep fire north of FL 2.</li> </ul>						
<b>End State</b>						
<ul style="list-style-type: none"> <li>• Fire is contained by adequate control line to reduce threat to escape; minimizing damage to private timberlands, private lands, and other resource values at risk.</li> </ul>						
<b>8. Division/Group Communication Summary</b>						
Function	Channel	RX Frequency N/W	RX Tone/NAC	TX Frequency N/W	TX Tone/NAC	Mode
AIR TO GROUND	ZONE 2 / CH 4	169.2000N	NONE	169.2000N	NONE	A
COMMAND	ZONE 2 / CH 8	159.2700N	156.7	151.1000N	123.0	A
TACTICAL	ZONE 2 / CH 12	159.4425N	NONE	159.4425N	NONE	A
AIR TO GROUND	ZONE 2 / CH 14	166.6750N	NONE	166.6750N	NONE	A
AIR TO GROUND	ZONE 2 / CH 15	169.1500N	NONE	169.1500N	NONE	A
AIR GUARD	ZONE 2 / CH 16	168.6250N	NONE	168.6250N	110.9	A
<b>9. Prepared By (Resource Unit Leader)</b>			<b>Approved By (Planning Section Chief)</b>		<b>Date</b>	<b>Time</b>
JEFF TURNER, RESL (T)			JOE BISHOP, PSC2 (T)		05/27/2017	0942

## Division/Group Assignment List (ICS 204 WF)

<b>1. Incident Name:</b>			<b>3.</b>			
WEST MIMS			<b>IV</b>		<b>A</b>	
<b>2. Operational Period:</b> DAY SHIFT 0730-1930						
Date/Time From: 05/28/2017 0730      SUN		Date/Time To: 05/28/2017 1930      SUN				
<b>4. Operations Personnel</b>						
<b>PLANNING OPERATIONS CHIEF</b>		TRENT INGRAM PHIL DANIELS (T)		<b>OPERATIONS CHIEF</b>		RICK DOLAN FRED BOEHM, BRYCE THOMAS (T)
<b>BRANCH DIRECTOR</b>		STEVE MILLER		<b>DIVISION/GROUP SUPERVISOR</b>		TOM TALBOT JEFF BOSTWICK (T)
<b>SAFETY</b>		LARRY CONNELL		<b>AIR TACTICAL GROUP SUPERVISOR</b>		MARK NUNEZ, KEN MCLAUGHLIN
<b>7. Special Instructions:</b>						
<p>Ensure LCES is in place before operations begin and stay hydrated. Drive defensively and with lights on at all times. Identify escape routes. Bridge near DP 9 restricted to pickups - No engines. Bridge on swamp perimeter road just east of first Branch has steep drop offs - 1 lane travel - watch for barricades.</p> <p>Use caution when working around logging operations.</p> <p><b>For IA protocol see page 7</b></p> <p>Medical Emergency Channel: Command  ETA for Ambulance to Scene:  Air: 20 – 30 mins  Ground: 10 - 15 mins Paved roads only.  IWI – IC or approved person will use Channel 16 (Air Guard) for contact with air ambulance  Air Ambulance landing zone to be determined by IWI – IC  Utilize engines to provide dust abatement, as needed, prior to air ambulance landing</p>						
<b>8. Division/Group Communication Summary</b>						
Function	Channel	RX Frequency N/W	RX Tone/NAC	TX Frequency N/W	TX Tone/NAC	Mode
AIR TO GROUND	ZONE 2 / CH 4	169.2000N	NONE	169.2000N	NONE	A
COMMAND	ZONE 2 / CH 8	159.2700N	156.7	151.1000N	123.0	A
TACTICAL	ZONE 2 / CH 12	159.4425N	NONE	159.4425N	NONE	A
AIR TO GROUND	ZONE 2 / CH 14	166.6750N	NONE	166.6750N	NONE	A
AIR TO GROUND	ZONE 2 / CH 15	169.1500N	NONE	169.1500N	NONE	A
AIR GUARD	ZONE 2 / CH 16	168.6250N	NONE	168.6250N	110.9	A
<b>9. Prepared By (Resource Unit Leader)</b>			<b>Approved By (Planning Section Chief)</b>		<b>Date</b>	<b>Time</b>
JEFF TURNER, RESL (T)			JOE BISHOP, PSC2 (T)		05/27/2017	0942







## Division/Group Assignment List (ICS 204 WF)

<b>1. Incident Name:</b>			<b>3.</b>			
WEST MIMS			<b>Branch:</b>		<b>Division/Group:</b>	
<b>2. Operational Period:</b> <b>DAY SHIFT 0730-1930</b>			<b>IV</b>		<b>Y</b>	
Date/Time From: 05/28/2017 0730	SUN	Date/Time To: 05/28/2017 1930	SUN			
<b>4. Operations Personnel</b>						
<b>PLANNING OPERATIONS CHIEF</b>		TRENT INGRAM PHIL DANIELS (T)		<b>OPERATIONS CHIEF</b>		
				RICK DOLAN FRED BOEHM, BRYCE THOMAS (T)		
<b>BRANCH DIRECTOR</b>		STEVE MILLER		<b>DIVISION/GROUP SUPERVISOR</b>		
				RANDY GREGORY SEAN BASSO (T)		
<b>SAFETY</b>		LARRY CONNELL		<b>AIR TACTICAL GROUP SUPERVISOR</b>		
				MARK NUNEZ, KEN MCLAUGHLIN		
<b>6. Control Operations/Work Assignments:</b>						
<b>Task</b>						
<ul style="list-style-type: none"> <li>• Respond to any new starts within the division.</li> <li>• Patrol and mop up fuels appropriate to fuel type and anticipated weather and fire behavior. Eliminate obvious smoke which will trigger unnecessary calls to 911 system.</li> </ul>						
<b>Purpose</b>						
<ul style="list-style-type: none"> <li>• Keep fire within established fire containment lines.</li> </ul>						
<b>End State</b>						
<ul style="list-style-type: none"> <li>• Fire is contained by adequate control line to reduce threat to escape; minimizing damage to private timberlands, private lands, and other resource values at risk.</li> </ul>						
<b>7. Special Instructions:</b>						
<p>Ensure LCES is in place before operations begin and stay hydrated. Drive defensively and with lights on at all times. Identify escape routes. Bridge near DP 9 restricted to pickups - No engines. Bridge on swamp perimeter road just east of first Branch has steep drop offs - 1 lane travel - watch for barricades.</p> <p>Use caution when working around logging operations.</p> <p><b>For IA protocol see page 7</b></p> <p><b>Medical Emergency Channel: Command</b>  <b>ETA for Ambulance to Scene:</b>  <b>Air: 20 – 30 mins</b>  <b>Ground: 10 - 15 mins Paved roads only.</b>  <b>IWI – IC or approved person will use Channel 16 (Air Guard) for contact with air ambulance</b>  <b>Air Ambulance landing zone to be determined by IWI – IC</b>  <b>Utilize engines to provide dust abatement, as needed, prior to air ambulance landing</b></p>						
<b>8. Division/Group Communication Summary</b>						
Function	Channel	RX Frequency N/W	RX Tone/NAC	TX Frequency N/W	TX Tone/NAC	Mode
AIR TO GROUND	ZONE 2 / CH 4	169.2000N	NONE	169.2000N	NONE	A
COMMAND	ZONE 2 / CH 8	159.2700N	156.7	151.1000N	123.0	A
TACTICAL	ZONE 2 / CH 9	159.2850N	NONE	159.2850N	156.7	A
AIR TO GROUND	ZONE 2 / CH 14	166.6750N	NONE	166.6750N	NONE	A
AIR TO GROUND	ZONE 2 / CH 15	169.1500N	NONE	169.1500N	NONE	A
AIR GUARD	ZONE 2 / CH 16	168.6250N	NONE	168.6250N	110.9	A
<b>9. Prepared By (Resource Unit Leader)</b>		<b>Approved By (Planning Section Chief)</b>		<b>Date</b>		<b>Time</b>
JEFF TURNER, RESL (T)		JOE BISHOP, PSC2 (T)		05/27/2017		0942

## Division/Group Assignment List (ICS 204 WF)

<b>1. Incident Name:</b>			<b>3.</b>			
WEST MIMS			<b>Branch:</b>		<b>Division/Group:</b>	
<b>2. Operational Period:</b> DAY SHIFT 0730-1930			<b>IV</b>		<b>Z</b>	
Date/Time From: 05/28/2017 0730      SUN		Date/Time To: 05/28/2017 1930      SUN				
<b>4. Operations Personnel</b>						
<b>PLANNING OPERATIONS CHIEF</b>		TRENT INGRAM PHIL DAVIS (T)		<b>OPERATIONS CHIEF</b>		
<b>BRANCH DIRECTOR</b>		STEVE MILLER		<b>DIVISION/GROUP SUPERVISOR</b>		
<b>SAFETY</b>		LARRY CONNELL		<b>AIR TACTICAL GROUP SUPERVISOR</b>		
				RICK DOLAN FRED BOEHM, BRYCE THOMAS (T)		
				JASON LONGFELLOW		
				MARK NUNEZ, KEN MCLAUGHLIN		
<b>5. Resources Assigned this Period</b>						
Strike Team / Task Force / Resource Designator		LWD	Leader	Number Persons	Drop Off PT./Time	Pick Up PT./Time
TFLD O-653		05/31	RYAN RAWLINSON	1	EAST CAMP/0730	EAST CAMP/1930
ENG6 - OLF - E-692 E-482		06/06	JODI STONE	4	EAST CAMP/0730	EAST CAMP/1930
ENG6 - OH-OHS E-62 E-761		05/28	JEFFREY G TUCKER	6	EAST CAMP/0730	EAST CAMP/1930
ENG6 - AR-OUF - PCS - E-692 E-737		05/29	MATTHEW MICHAEL KAMPF	3	EAST CAMP/0730	EAST CAMP/1930
WTT2 - VIN# 009542 E-409			ANTHONY PALVICK	1	EAST CAMP/0730	EAST CAMP/1930
WTT2 - FARRELL TIMBER - VIN# 557261 E-410		06/04	DON WILSON	1	EAST CAMP/0730	EAST CAMP/1930
STEN O-658		05/29	JAMES T ALLISON	1	EAST CAMP/0730	EAST CAMP/1930
ENG6 - 361 E-775		05/29	DAVID T MARBERT	3	EAST CAMP/0730	EAST CAMP/1930
ENG6 - NMN2S - E 2-2 E-767		05/29	MAYLON BERT BROWN	2	EAST CAMP/0730	EAST CAMP/1930
WTT2 - VIN# 9250 E-574		06/02	TONY TIPTON	1	EAST CAMP/0730	EAST CAMP/1930
STEQ O-736		06/06	JEREMY CALLICUTT	1	EAST CAMP/0730	EAST CAMP/1930
STEQ (T) O-613		05/28	DANIEL KEITH GALLAGHER II	1	EAST CAMP/0730	EAST CAMP/1930
TPL3 NC-NCS - 3X77 E-568		06/06	JACK FRANKLIN	2	EAST CAMP/0730	EAST CAMP/1930
TPL3 NC-NCS - 3X65 E-569		06/06	MARK ALLEN	2	EAST CAMP/0730	EAST CAMP/1930
DOZ2 - 750K - 261627 HASSELL E-530		06/09		1	EAST CAMP/0730	EAST CAMP/1930
<b>8. Division/Group Communication Summary</b>						
Function	Channel	RX Frequency N/W	RX Tone/NAC	TX Frequency N/W	TX Tone/NAC	Mode
AIR TO GROUND	ZONE 2 / CH 4	169.2000N	NONE	169.2000N	NONE	A
COMMAND	ZONE 2 / CH 8	159.2700N	156.7	151.1000N	123.0	A
TACTICAL	ZONE 2 / CH 10	168.3500N	NONE	168.3500N	NONE	A
AIR TO GROUND	ZONE 2 / CH 14	166.6750N	NONE	166.6750N	NONE	A
AIR TO GROUND	ZONE 2 / CH 15	169.1500N	NONE	169.1500N	NONE	A
AIR GUARD	ZONE 2 / CH 16	168.6250N	NONE	168.6250N	110.9	A
<b>9. Prepared By (Resource Unit Leader)</b>			<b>Approved By (Planning Section Chief)</b>		<b>Date</b>	<b>Time</b>
JEFF TURNER, RESL (T)			JOE BISHOP, PSC2 (T)		05/27/2017	0942

## Division/Group Assignment List (ICS 204 WF)

<b>1. Incident Name:</b>			<b>3.</b>			
WEST MIMS			<b>Branch:</b>  <b>IV</b>		<b>Division/Group:</b>  <b>Z</b>	
<b>2. Operational Period:</b> <b>DAY SHIFT 0730-1930</b>						
Date/Time From: 05/28/2017 0730                    SUN		Date/Time To: 05/28/2017 1930                    SUN				
<b>4. Operations Personnel</b>						
<b>PLANNING OPERATIONS CHIEF</b>		TRENT INGRAM PHIL DAVIS (T)		<b>OPERATIONS CHIEF</b>		RICK DOLAN FRED BOEHM, BRYCE THOMAS (T)
<b>BRANCH DIRECTOR</b>		STEVE MILLER		<b>DIVISION/GROUP SUPERVISOR</b>		JASON LONGFELLOW
<b>SAFETY</b>		LARRY CONNELL		<b>AIR TACTICAL GROUP SUPERVISOR</b>		MARK NUNEZ, KEN MCLAUGHLIN
<b>5. Resources Assigned this Period</b>						
Strike Team / Task Force / Resource Designator		LWD	Leader	Number Persons	Drop Off PT./Time	Pick Up PT./Time
EXCA T1 - VIN# 470405 HASSELL E-620		06/09		1	EAST CAMP/0730	EAST CAMP/1930
EMPF E-314 602-571-2505		05/30	JOHN HECK	1	EAST CAMP/0730	EAST CAMP/1930
SOF2 O-494            505-470-2012		05/29	DARROLL ABEYTA	1	EAST CAMP/0730	EAST CAMP/1930
<b>6. Control Operations/Work Assignments:</b>						
<b>Task</b>						
<ul style="list-style-type: none"> <li>• Respond to any new starts within the division.</li> <li>• Patrol and mop up fuels appropriate to fuel type and anticipated weather and fire behavior.</li> <li>• Rehabilitate contingency line.</li> </ul>						
<b>Purpose</b>						
<ul style="list-style-type: none"> <li>• Keep fire within established fire containment lines.</li> </ul>						
<b>End State</b>						
<ul style="list-style-type: none"> <li>• Fire is contained by adequate control line to reduce threat to escape; minimizing damage to private timberlands, private lands, and other resource values at risk.</li> </ul>						
<b>7. Special Instructions:</b>						
Use caution when working around logging operations.						
<b>Medical Emergency Channel: Command</b> <b>ETA for Ambulance to Scene:</b> <b>Air: 20 – 30 mins</b> <b>Ground: 10 - 15 mins Paved roads only.</b>						
<b>8. Division/Group Communication Summary</b>						
Function	Channel	RX Frequency N/W	RX Tone/NAC	TX Frequency N/W	TX Tone/NAC	Mode
AIR TO GROUND	ZONE 2 / CH 4	169.2000N	NONE	169.2000N	NONE	A
COMMAND	ZONE 2 / CH 8	159.2700N	156.7	151.1000N	123.0	A
TACTICAL	ZONE 2 / CH 10	168.3500N	NONE	168.3500N	NONE	A
AIR TO GROUND	ZONE 2 / CH 14	166.6750N	NONE	166.6750N	NONE	A
AIR TO GROUND	ZONE 2 / CH 15	169.1500N	NONE	169.1500N	NONE	A
AIR GUARD	ZONE 2 / CH 16	168.6250N	NONE	168.6250N	110.9	A
<b>9. Prepared By (Resource Unit Leader)</b>			<b>Approved By (Planning Section Chief)</b>		<b>Date</b>	<b>Time</b>
JEFF TURNER, RESL (T)			JOE BISHOP, PSC2 (T)		05/27/2017	0942

## Division/Group Assignment List (ICS 204 WF)

<b>1. Incident Name:</b>			<b>3.</b>			
WEST MIMS			<b>IV</b>		<b>Z</b>	
<b>2. Operational Period:</b> DAY SHIFT 0730-1930						
Date/Time From: 05/28/2017 0730      SUN		Date/Time To: 05/28/2017 1930      SUN				
<b>4. Operations Personnel</b>						
<b>PLANNING OPERATIONS CHIEF</b>		TRENT INGRAM PHIL DAVIS (T)		<b>OPERATIONS CHIEF</b>		RICK DOLAN FRED BOEHM, BRYCE THOMAS (T)
<b>BRANCH DIRECTOR</b>		STEVE MILLER		<b>DIVISION/GROUP SUPERVISOR</b>		JASON LONGFELLOW
<b>SAFETY</b>		LARRY CONNELL		<b>AIR TACTICAL GROUP SUPERVISOR</b>		MARK NUNEZ, KEN MCLAUGHLIN
<b>7. Special Instructions:</b>						
<p>IWI – IC or approved person will use Channel 16 (Air Guard) for contact with air ambulance                      Air Ambulance landing zone to be determined by IWI – IC                      Utilize engines to provide dust abatement, as needed, prior to air ambulance landing</p> <p><b>For IA protocol see page 7</b></p> <p>2 - TPL Okie - O/H Donnie Harris DIVS                      1 - 1050 KG - with operator GFC                      1 - Appalachia 750 (Lease) with operator STEQ with 3-T2 Tractor Plow                      STEQ (Weaver) with 4-T3 Tractor Plow</p>						
<b>8. Division/Group Communication Summary</b>						
Function	Channel	RX Frequency N/W	RX Tone/NAC	TX Frequency N/W	TX Tone/NAC	Mode
AIR TO GROUND	ZONE 2 / CH 4	169.2000N	NONE	169.2000N	NONE	A
COMMAND	ZONE 2 / CH 8	159.2700N	156.7	151.1000N	123.0	A
TACTICAL	ZONE 2 / CH 10	168.3500N	NONE	168.3500N	NONE	A
AIR TO GROUND	ZONE 2 / CH 14	166.6750N	NONE	166.6750N	NONE	A
AIR TO GROUND	ZONE 2 / CH 15	169.1500N	NONE	169.1500N	NONE	A
AIR GUARD	ZONE 2 / CH 16	168.6250N	NONE	168.6250N	110.9	A
<b>9. Prepared By (Resource Unit Leader)</b>			<b>Approved By (Planning Section Chief)</b>		<b>Date</b>	<b>Time</b>
JEFF TURNER, RESL (T)			JOE BISHOP, PSC2 (T)		05/27/2017	0942

## Division/Group Assignment List (ICS 204 WF)

<b>1. Incident Name:</b>			<b>3.</b>			
WEST MIMS			<b>Branch:</b>		<b>Division/Group:</b>	
<b>2. Operational Period:</b> DAY SHIFT 0730-1930			<b>ROAD MAINT</b>		<b>EAST</b>	
Date/Time From: 05/28/2017 0730      SUN		Date/Time To: 05/28/2017 1930      SUN				
<b>4. Operations Personnel</b>						
<b>PLANNING OPERATIONS CHIEF</b>		TRENT INGRAM PHIL DANIELS (T)		<b>OPERATIONS CHIEF</b>		RICK DOLAN FRED BOEHM, BRYCE THOMAS (T)
<b>BRANCH DIRECTOR</b>		BOB LITTLE		<b>DIVISION/GROUP SUPERVISOR</b>		KRIS CRODDY CASEY A O'CONNOR (T)
<b>SAFETY</b>		LARRY CONNELL		<b>AIR TACTICAL GROUP SUPERVISOR</b>		MARK NUNEZ KEN MCLAUGHLIN
<b>5. Resources Assigned this Period</b>						
Strike Team / Task Force / Resource Designator		LWD	Leader	Number Persons	Drop Off PT./Time	Pick Up PT./Time
TFLD O-652		05/30	LONNY HAGEDON	1	EAST CAMP/0730	EAST CAMP/1930
TFLD (T) O-671		05/29	JAMES BARBERI	1	EAST CAMP/0730	EAST CAMP/1930
HEQB O-646		05/29	CHAD TUSS	1	EAST CAMP/0730	EAST CAMP/1930
WTS2 - TIPTON & YOUNG E-313		06/03	WOODY BARGERON	1	EAST CAMP/0730	EAST CAMP/1930
WTS2 - VIN# Z73020 E-746				1	EAST CAMP/0730	EAST CAMP/1930
WTS2 - HOME STYLE E-644		06/05	JOHNNY CASTILLO	1	EAST CAMP/0730	EAST CAMP/1930
TIPTON & YOUNG CONST E-340		06/04	DEVIN MCHZLEY	1	EAST CAMP/0730	EAST CAMP/1930
GRD2 CORNELIUS E-942		06/05	JASON MERRITT	1	EAST CAMP/0730	EAST CAMP/1930
HEQB O-547		06/12	RODNEY HELZER	1	EAST CAMP/0730	EAST CAMP/1930
GRD2 - R.O.T. RANCH E-234		06/05	ROBBY WORRELL	1	EAST CAMP/0730	EAST CAMP/1930
GRD2 - R.O.T. RANCH E-639		05/26	WESLEY WOOD	1	EAST CAMP/0730	EAST CAMP/1930
<b>8. Division/Group Communication Summary</b>						
Function	Channel	RX Frequency N/W	RX Tone/NAC	TX Frequency N/W	TX Tone/NAC	Mode
COMMAND	ZONE 2 / CH 3	159.1200N	NONE	151.3700N	82.5	A
AIR TO GROUND	ZONE 2 / CH 4	169.2000N	NONE	169.2000N	NONE	A
TACTICAL	ZONE 2 / CH 10	168.3500N	NONE	168.3500N	NONE	A
AIR TO GROUND	ZONE 2 / CH 14	166.6750N	NONE	166.6750N	NONE	A
AIR TO GROUND	ZONE 2 / CH 15	169.1500N	NONE	169.1500N	NONE	A
AIR GUARD	ZONE 2 / CH 16	168.6250N	NONE	168.6250N	110.9	A
<b>9. Prepared By (Resource Unit Leader)</b>			<b>Approved By (Planning Section Chief)</b>		<b>Date</b>	<b>Time</b>
JEFF TURNER, RESL (T)			JOE BISHOP, PSC2 (T)		05/27/2017	0942



## Division/Group Assignment List (ICS 204 WF)

<b>1. Incident Name:</b>			<b>3.</b>			
WEST MIMS			<b>Branch:</b>		<b>Division/Group:</b>	
<b>2. Operational Period:</b> DAY SHIFT 0730-1930			<b>ROAD MAINT</b>		<b>EAST</b>	
Date/Time From: 05/28/2017 0730      SUN		Date/Time To: 05/28/2017 1930      SUN				
<b>4. Operations Personnel</b>						
<b>PLANNING OPERATIONS CHIEF</b>		TRENT INGRAM PHIL DANIELS (T)		<b>OPERATIONS CHIEF</b>		RICK DOLAN FRED BOEHM, BRYCE THOMAS (T)
<b>BRANCH DIRECTOR</b>		BOB LITTLE		<b>DIVISION/GROUP SUPERVISOR</b>		KRIS CRODDY CASEY A O'CONNOR (T)
<b>SAFETY</b>		LARRY CONNELL		<b>AIR TACTICAL GROUP SUPERVISOR</b>		MARK NUNEZ KEN MCLAUGHLIN
<b>6. Control Operations/Work Assignments:</b>						
<b>Task</b>						
<ul style="list-style-type: none"> <li>• Assess access roads to fire perimeter; repair or maintain as necessary in accordance with priority list provided by Operations Section Chief.</li> <li>• Provide adequate signage for traffic safety.</li> <li>• Assess single lane bridges and culverts for safety and maintenance needs.</li> </ul>						
<b>Purpose</b>						
<ul style="list-style-type: none"> <li>• To keep adequate vehicular access to the fire perimeter.</li> </ul>						
<b>End State</b>						
<ul style="list-style-type: none"> <li>• Access roads are in a safe and travel worthy condition.</li> </ul>						
<b>7. Special Instructions:</b>						
Check in and out with Division Supervisor when moving between divisions.						
<b>Medical Emergency Channel: Command</b> <b>ETA for Ambulance to Scene:</b> <b>Air: 20-30 mins</b> <b>Ground: 10-15 mins Paved road only.</b> <b>IWI - IC or approved person will use Channel 16 (Air Guard) for contact with air ambulance.</b> <b>Air Ambulance landing zone to be determined by IWI - IC.</b> <b>Utilize engines to provide dust abatement, as needed, prior to air ambulance landing.</b>						
<b>8. Division/Group Communication Summary</b>						
Function	Channel	RX Frequency N/W	RX Tone/NAC	TX Frequency N/W	TX Tone/NAC	Mode
COMMAND	ZONE 2 / CH 3	159.1200N	NONE	151.3700N	82.5	A
AIR TO GROUND	ZONE 2 / CH 4	169.2000N	NONE	169.2000N	NONE	A
TACTICAL	ZONE 2 / CH 10	168.3500N	NONE	168.3500N	NONE	A
AIR TO GROUND	ZONE 2 / CH 14	166.6750N	NONE	166.6750N	NONE	A
AIR TO GROUND	ZONE 2 / CH 15	169.1500N	NONE	169.1500N	NONE	A
AIR GUARD	ZONE 2 / CH 16	168.6250N	NONE	168.6250N	110.9	A
<b>9. Prepared By (Resource Unit Leader)</b>			<b>Approved By (Planning Section Chief)</b>		<b>Date</b>	<b>Time</b>
JEFF TURNER, RESL (T)			JOE BISHOP, PSC2 (T)		05/27/2017	0942



## Division/Group Assignment List (ICS 204 WF)

<b>1. Incident Name:</b>			<b>3.</b>			
WEST MIMS			<b>Branch:</b>		<b>Division/Group:</b>	
<b>2. Operational Period:</b> DAY SHIFT 0730-1930			<b>ROAD MAINT</b>		<b>SOUTH</b>	
Date/Time From: 05/28/2017 0730      SUN		Date/Time To: 05/28/2017 1930      SUN				
<b>4. Operations Personnel</b>						
<b>PLANNING OPERATIONS CHIEF</b>		TRENT INGRAM PHIL DANIELS (T)		<b>OPERATIONS CHIEF</b>		RICK DOLAN FRED BOEHM, BRYCE THOMAS (T)
<b>BRANCH DIRECTOR</b>		BOB LITTLE		<b>DIVISION/GROUP SUPERVISOR</b>		ANDREW BRANSON
<b>SAFETY</b>		LARRY GRUBBS CLAY STEPHENS (T)		<b>AIR TACTICAL GROUP SUPERVISOR</b>		MARK NUNEZ KEN MCLAUGHLIN
<b>5. Resources Assigned this Period</b>						
Strike Team / Task Force / Resource Designator		LWD	Leader	Number Persons	Drop Off PT./Time	Pick Up PT./Time
TFLD O-654		05/31	JOSH CANTRELL	1	EAST CAMP/0730	EAST CAMP/1930
HEQB O-599		06/01	MARK BASS	1	EAST CAMP/0730	EAST CAMP/1930
GRD2 - WFS 6198TE E-136		06/04	JUSTIN BARBER	1	EAST CAMP/0730	EAST CAMP/1930
HEQB O-600		05/29	SHANE FEIGHTNER	1	EAST CAMP/0730	EAST CAMP/1930
GRD2 - CORNELIUS FARMS E-941		05/31	ALEX CORNELIUS	1	EAST CAMP/0730	EAST CAMP/1930
WTS2 -AZ-DSY #146 E-643		05/29	RANDY KENNEDY	1	EAST CAMP/0730	EAST CAMP/1930
TFLD O-615		05/29	CHAD D STOVER	1	EAST CAMP/0730	EAST CAMP/1930
EXCAVATOR T3 - VIN# GXHFE E-622		06/08	BUCK TODDENBERRY	1	EAST CAMP/0730	EAST CAMP/1930
DOZER T3 - VIN# 302873 E-623		06/08	KELLY PITTMAN	1	EAST CAMP/0730	EAST CAMP/1930
<b>8. Division/Group Communication Summary</b>						
Function	Channel	RX Frequency N/W	RX Tone/NAC	TX Frequency N/W	TX Tone/NAC	Mode
COMMAND	ZONE 2 / CH 8	159.2700N	156.7	151.1000N	123.0	A
AIR TO GROUND	ZONE 2 / CH 4	169.2000N	NONE	169.2000N	NONE	A
TACTICAL	ZONE 2 / CH 10	168.3500N	NONE	168.3500N	NONE	A
AIR TO GROUND	ZONE 2 / CH 14	166.6750N	NONE	166.6750N	NONE	A
AIR TO GROUND	ZONE 2 / CH 15	169.1500N	NONE	169.1500N	NONE	A
AIR GUARD	ZONE 2 / CH 16	168.6250N	NONE	168.6250N	110.9	A
<b>9. Prepared By (Resource Unit Leader)</b>			<b>Approved By (Planning Section Chief)</b>		<b>Date</b>	<b>Time</b>
JEFF TURNER, RESL (T)			JOE BISHOP, PSC2 (T)		05/27/2017	0942

## Division/Group Assignment List (ICS 204 WF)

<b>1. Incident Name:</b>			<b>3.</b>			
WEST MIMS			<b>Branch:</b>		<b>Division/Group:</b>	
<b>2. Operational Period:</b> DAY SHIFT 0730-1930			<b>ROAD MAINT</b>		<b>SOUTH</b>	
Date/Time From: 05/28/2017 0730      SUN		Date/Time To: 05/28/2017 1930      SUN				
<b>4. Operations Personnel</b>						
<b>PLANNING OPERATIONS CHIEF</b>		TRENT INGRAM PHIL DANIELS (T)		<b>OPERATIONS CHIEF</b>		
				RICK DOLAN FRED BOEHM, BRYCE THOMAS (T)		
<b>BRANCH DIRECTOR</b>		BOB LITTLE		<b>DIVISION/GROUP SUPERVISOR</b>		
				ANDREW BRANSON		
<b>SAFETY</b>		LARRY GRUBBS CLAY STEPHENS (T)		<b>AIR TACTICAL GROUP SUPERVISOR</b>		
				MARK NUNEZ KEN MCLAUGHLIN		
<b>6. Control Operations/Work Assignments:</b>						
<b>Task</b>						
<ul style="list-style-type: none"> <li>• Assess access roads to fire perimeter; repair or maintain as necessary in accordance with priority list provided by Operations Section Chief.</li> <li>• Provide adequate signage for traffic safety.</li> <li>• Assess single lane bridges and culverts for safety and maintenance needs.</li> </ul>						
<b>Purpose</b>						
<ul style="list-style-type: none"> <li>• To keep adequate vehicular access to the fire perimeter.</li> </ul>						
<b>End State</b>						
<ul style="list-style-type: none"> <li>• Access roads are in a safe and travel worthy condition.</li> </ul>						
<b>7. Special Instructions:</b>						
Check in and out with Division Supervisor when moving between divisions.						
<b>Medical Emergency Channel: Command</b> <b>ETA for Ambulance to Scene:</b> <b>Air: 20-30 mins</b> <b>Ground: 10-15 mins Paved road only.</b> <b>IWI - IC or approved person will use Channel 16 (Air Guard) for contact with air ambulance.</b> <b>Air Ambulance landing zone to be determined by IWI - IC.</b> <b>Utilize engines to provide dust abatement, as needed, prior to air ambulance landing.</b>						
<b>8. Division/Group Communication Summary</b>						
Function	Channel	RX Frequency N/W	RX Tone/NAC	TX Frequency N/W	TX Tone/NAC	Mode
COMMAND	ZONE 2 / CH 8	159.2700N	156.7	151.1000N	123.0	A
AIR TO GROUND	ZONE 2 / CH 4	169.2000N	NONE	169.2000N	NONE	A
TACTICAL	ZONE 2 / CH 10	168.3500N	NONE	168.3500N	NONE	A
AIR TO GROUND	ZONE 2 / CH 14	166.6750N	NONE	166.6750N	NONE	A
AIR TO GROUND	ZONE 2 / CH 15	169.1500N	NONE	169.1500N	NONE	A
AIR GUARD	ZONE 2 / CH 16	168.6250N	NONE	168.6250N	110.9	A
<b>9. Prepared By (Resource Unit Leader)</b>		<b>Approved By (Planning Section Chief)</b>		<b>Date</b>		<b>Time</b>
JEFF TURNER, RESL (T)		JOE BISHOP, PSC2 (T)		05/27/2017		0942

## Division/Group Assignment List (ICS 204 WF)

<b>1. Incident Name:</b>			<b>3.</b>			
WEST MIMS			<b>Branch:</b>		<b>Division/Group:</b>	
<b>2. Operational Period:</b> DAY SHIFT 0730-1930			<b>ROAD MAINT</b>		<b>WEST</b>	
Date/Time From: 05/28/2017 0730      SUN		Date/Time To: 05/28/2017 1930      SUN				
<b>4. Operations Personnel</b>						
<b>PLANNING OPERATIONS CHIEF</b>		TRENT INGRAM PHIL DANIELS (T)		<b>OPERATIONS CHIEF</b>		RICK DOLAN BUCK KLINE
<b>BRANCH DIRECTOR</b>		BOB LITTLE		<b>DIVISION/GROUP SUPERVISOR</b>		DAVID SMITH
<b>SAFETY</b>		LARRY GRUBBS CLAY STEPHENS (T)		<b>AIR TACTICAL GROUP SUPERVISOR</b>		MARK NUNEZ KEN MCLAUGHLIN
<b>5. Resources Assigned this Period</b>						
Strike Team / Task Force / Resource Designator		LWD	Leader	Number Persons	Drop Off PT./Time	Pick Up PT./Time
STEQ O-603		05/28	JAMES LICO	1	ICP/0730	ICP/1930
HEQB O-647		05/30	BRANDON CREECH	1	ICP/0730	ICP/1930
GRD2 - MOORE'S - E-641		05/29	ERIC MOORE	1	ICP/0730	ICP/1930
HEQB O-645		05/29	JONATHAN MCDUFFEY	1	ICP/0730	ICP/1930
GRD1 - VIN# 625863 E-866		06/14	BRIAN JENKINS	1	ICP/0730	ICP/1930
HEQB O-688		05/31	GENE PHILLPS	1	ICP/0730	ICP/1930
DOZ2 - TIPTON & YOUNG E-506		06/04	ETHAN TIPTON	2	ICP/0730	ICP/1930
HEQB O-631		06/03	SCOTT BURGHARDT	1	ICP/0730	ICP/1930
TPL2 TIPTON & YOUNG E-509		06/06		1	ICP/0730	ICP/1930
SOF2 O-492		06/10	TIMOTHY OLIVERIUS	1	ICP/0730	ICP/1930
<b>8. Division/Group Communication Summary</b>						
Function	Channel	RX Frequency N/W	RX Tone/NAC	TX Frequency N/W	TX Tone/NAC	Mode
COMMAND	ZONE 2 / CH 7	159.2700N	156.7	151.1000N	100.0	A
AIR TO GROUND	ZONE 2 / CH 4	169.2000N	NONE	169.2000N	NONE	A
TACTICAL	ZONE 2 / CH 10	168.3500N	NONE	168.3500N	NONE	A
AIR TO GROUND	ZONE 2 / CH 14	166.6750N	NONE	166.6750N	NONE	A
AIR TO GROUND	ZONE 2 / CH 15	169.1500N	NONE	169.1500N	NONE	A
AIR GUARD	ZONE 2 / CH 16	168.6250N	NONE	168.6250N	110.9	A
<b>9. Prepared By (Resource Unit Leader)</b>			<b>Approved By (Planning Section Chief)</b>		<b>Date</b>	<b>Time</b>
JEFF TURNER, RESL (T)			JOE BISHOP, PSC2 (T)		05/27/2017	0942

## Division/Group Assignment List (ICS 204 WF)

<b>1. Incident Name:</b>			<b>3.</b>			
WEST MIMS			<b>Branch:</b>		<b>Division/Group:</b>	
<b>2. Operational Period:</b> DAY SHIFT 0730-1930			<b>ROAD MAINT</b>		<b>WEST</b>	
Date/Time From: 05/28/2017 0730      SUN		Date/Time To: 05/28/2017 1930      SUN				
<b>4. Operations Personnel</b>						
<b>PLANNING OPERATIONS CHIEF</b>		TRENT INGRAM PHIL DANIELS (T)		<b>OPERATIONS CHIEF</b>		
<b>BRANCH DIRECTOR</b>		BOB LITTLE		<b>DIVISION/GROUP SUPERVISOR</b>		
<b>SAFETY</b>		LARRY GRUBBS CLAY STEPHENS (T)		<b>AIR TACTICAL GROUP SUPERVISOR</b>		
				RICK DOLAN BUCK KLINE DAVID SMITH MARK NUNEZ KEN MCLAUGHLIN		
<b>5. Resources Assigned this Period</b>						
Strike Team / Task Force / Resource Designator		LWD	Leader	Number Persons	Drop Off PT./Time	Pick Up PT./Time
<b>6. Control Operations/Work Assignments:</b>						
<p><b>Task</b></p> <ul style="list-style-type: none"> <li>• Assess access roads to fire perimeter; repair or maintain as necessary in accordance with priority list provided by Operations Section Chief.</li> <li>• Provide adequate signage for traffic safety.</li> <li>• Assess single lane bridges and culverts for safety and maintenance needs.</li> </ul> <p><b>Purpose</b></p> <ul style="list-style-type: none"> <li>• To keep adequate vehicular access to the fire perimeter.</li> </ul> <p><b>End State</b></p> <ul style="list-style-type: none"> <li>• Access roads are in a safe and travel worthy condition.</li> </ul>						
<b>7. Special Instructions:</b>						
<p>Check in and out with Division Supervisor when moving between divisions.</p> <p>Medical Emergency Channel: Command ETA for Ambulance to Scene: Air: 20-30 mins Ground: 10-15 mins Paved road only. IWI - IC or approved person will use Channel 16 (Air Guard) for contact with air ambulance. Air Ambulance landing zone to be determined by IWI - IC. Utilize engines to provide dust abatement, as needed, prior to air ambulance landing.</p>						
<b>8. Division/Group Communication Summary</b>						
Function	Channel	RX Frequency N/W	RX Tone/NAC	TX Frequency N/W	TX Tone/NAC	Mode
COMMAND	ZONE 2 / CH 7	159.2700N	156.7	151.1000N	100.0	A
AIR TO GROUND	ZONE 2 / CH 4	169.2000N	NONE	169.2000N	NONE	A
TACTICAL	ZONE 2 / CH 10	168.3500N	NONE	168.3500N	NONE	A
AIR TO GROUND	ZONE 2 / CH 14	166.6750N	NONE	166.6750N	NONE	A
AIR TO GROUND	ZONE 2 / CH 15	169.1500N	NONE	169.1500N	NONE	A
AIR GUARD	ZONE 2 / CH 16	168.6250N	NONE	168.6250N	110.9	A
<b>9. Prepared By (Resource Unit Leader)</b>			<b>Approved By (Planning Section Chief)</b>		<b>Date</b>	<b>Time</b>
JEFF TURNER, RESL (T)			JOE BISHOP, PSC2 (T)		05/27/2017	0942

**AIR OPERATIONS SUMMARY (ICS220)**

Prepared by: John Bragg

Prepared Date: 5/27/2017

Prepared Time: 17:00

<b>1. INCIDENT NAME:</b> West Mims	<b>2. OPS PERIOD DATE:</b> 5/28/17	<b>START TIME:</b> 0800	<b>END TIME:</b> 1900	<b>SUNRISE:</b> 0627	<b>SUNSET TIME:</b> 2024 (Folkston)
<b>3. REMARKS Safety Notes: Hazards (SEE AND AVOID GENERAL AVIATION TRAFFIC AND AERIAL HAZARDS)</b> -Maintain clear communications; confirm that drop location is clear; ground personnel state: "Clear to Drop" -Incident Aircraft conduct flight following with Pogo Helibase when ATGS is not up. -Aerial Ignition Group: Helicopter 1FW with PLDO; FIRB, Jon King. -CEASE ALL FIRE OPERATIONS AT SUNSET -ALL AIRCRAFT SQUAWK 1255  <b>ORDERING/FLIGHT REQUESTS</b> -Request Helicopter water drops through Air Attack -Request Tankers/Retardant through Air Attack -Requests for Reconnaissance missions must go through Operations for pre-approval  <b>E-MAIL AIRCRAFT COSTS DAILY AT END OF SHIFT TO: al_d2011@yahoo.com</b>			<b>4. READY ALERT AIRCRAFT:</b>  N-132BH N-351FW		<b>5. TFR: (A-160)</b> 7/1205; Surface to 3500' MSL; See NOTAM for full description. Frequency 120.8500 Expires 6/06/17 @ 2100hrs.

6. PERSONNEL	NAME	PHONE #	7. FREQUENCIES	AM	FM	8. FIXED-WING- Type/ Make-Model/ N#/ Base
AOBD	John Bragg  Air Ops Desk	423-483-2798  912-637-5133	A/A - Fixed Wing (A-17) A/A - Rotor / TFR (A-37)  A/G (Request) (A-111) A/G 66 (Primary) (A-5) A/G 72 (Secondary) (A-16)	120.3500 120.8500	   169.2000 166.6750 169.1500	<b>AIR ATTACK:</b> ATGS – Mark Nunez / AC690 / N690RA / LCQ 805-975-5227 ATGS – Ken McLaughlin / Kodiak / N420Q / LCQ 813-997-0317
ASGS	Al Driesbach	805-703-0649				MMA -- Craig Hall/ Pilatus12 /N328SF/GNV 970-799-1231
HEB2 - Pogo HEB2(T) - Pogo HEB1 - Lake City	Marc 'Boomer' Rudkin David Aldrich Brad Nelson	307-287-0440 520-490-8638 559-349-6793	Deck/TOLC (Pogo) Deck (Lake City)		168.0500 163.100	<b>TANKERS – As available</b> (T-02) BAE146 / N474NA / LCQ (Off Mondays) (T-164) RJ-85A / N374AC / LCQ (Off Thursdays)
	Pogo Helibase	912-496-4415				
	Lake City Helibase	561-512-6333	Air Guard		168.625 (110.9)	

**9. HELICOPTER** Remarks Box Legend: C=Cargo P=Passengers B=Bucket SN=Snorkel R=Rappel H=Hoist SH=Short Haul ME=Medical Evacuation/ Extraction Exu=Exclusive Use

FAA N#	T Y	MAKE/ MODEL	BASE	START	READY to FLY	REMARKS	FAA N#	T Y	MAKE/ MODEL	BASE	START	READY to FLY	REMARKS
132BH	3	AS350 B3	Pogo (3GE1)	0800	0830	P, B Exu	13FH	1	UH-60A	Lake City (LCQ)	0800	0830	B Exu
351FW	3	AS350 B2	Pogo (3GE1)	0800	0830	P, B Exu	612CK (702)	1	SH-3H / S-61	Lake City (LCQ)	0800	0830	SN * <u>On Loan</u>
471CH	1	CH-47D	Lake City (LCQ)	0800	0830	SN Exu	137BH	1	S70A-27	Lake City (LCQ)	0800	0830	B * <u>On Loan</u>
611CK	1	SH-3H / S-61	Lake City (LCQ)	0800	0830	SN Exu	472CH	1	CH-47D	Lake City (LCQ)	0800	0830	SN * <u>On Loan</u>

**10. Mission Request**

1. /; 2. ; 3. ; 4. ; 5. ;
---------------------------

## INCIDENT RADIO COMMUNICATIONS PLAN (ICS 205)

<b>1. Incident Name:</b>			<b>2. Date/Time Prepared:</b>			<b>3. Operational Period: DAY SHIFT 0730-1930</b>				
WEST MIMS			Date: 05/27/2017 Time: 1717			Date/Time From: 05/28/2017 0730      SUN			Date/Time To: 05/28/2017 1930      SUN	
<b>4. Basic Radio Channel Use:</b>										
Zone Group	Ch #	Function	Channel Name/Trunked Radio System Talkgroup	Assignment	RX Freq	RX Tone/NAC	TX Freq	TX Tone/NAC	Mode (A,D, or M)	Remarks
1 WEST	1	COMMAND	WEST OKEE REP		167.1250N	156.7	163.1500N	156.7	M	STEPHEN FOSTER STATE PARK
1 WEST	2	COMMAND	S. FOSTER	DIV D	159.1200N	NONE	151.3700N	100.0	A	
1 EAST	3	COMMAND	CORNELIA		159.1200N	NONE	151.3700N	82.5	A	
1 ALL DIVISIONS	4	AIR TO GROUND	A/G REQUEST	ALL DIVISIONS	169.2000N	NONE	169.2000N	NONE	A	
1	5	COMMAND	GFC EDDY	GA FORESTRY	159.4650N	NONE	151.1450N	123.0	A	GA FORESTRY ONLY
1	6	TACTICAL	GFC TAC 1		159.3900N	NONE	159.3900N	156.7	A	
1	7	TACTICAL	V FIRE 26		154.3025N	NONE	154.3025N	156.7	A	
1	8	TACTICAL	OSCEOLA PROJECT		163.7125N	NONE	163.7125N	NONE	A	
1	9	TACTICAL	SE COMPACT		159.2850N	NONE	159.2850N	156.7	A	
1	10	TACTICAL	REFUGE TAC 1		168.3500N	NONE	168.3500N	NONE	A	
1	11	TACTICAL	REFUGE TAC 2		163.1000N	NONE	163.1000N	NONE	A	
1	12	TACTICAL	FFS 199		159.4425N	NONE	159.4425N	NONE	A	
1 WEST	13	TACTICAL	FFS 200	DIV D	159.4125N	NONE	159.4125N	NONE	A	
1 ALL DIVISIONS	14	AIR TO GROUND	AIR TO GRD 66	A/G PRIMARY	166.6750N	NONE	166.6750N	NONE	A	AIR TO GROUND PRIMARY
1 ALL DIVISIONS	15	AIR TO GROUND	AIR TO GRD 72	A/G SECONDARY	169.1500N	NONE	169.1500N	NONE	A	AIR / GROUND SECONDARY
1 ALL DIVISIONS	16	AIR GUARD	AIR GUARD	ALL DIVISIONS	168.6250N	NONE	168.6250N	110.9	A	EMERGENCY AIRCRAFT COMMUNICATIONS
<b>5. Special Instructions:</b>										
<b>6. Prepared By</b> (Communications Unit Leader)				Name: PAUL NOA, COML-T				Signature:		
<b>ICS 205</b>				<b>IAP Page</b>				Date/Time: 05/27/2017 1717		

# INCIDENT RADIO COMMUNICATIONS PLAN (ICS 205)

<b>1. Incident Name:</b>	<b>2. Date/Time Prepared:</b>	<b>3. Operational Period: DAY SHIFT 0730-1930</b>	
WEST MIMS	Date: 05/27/2017 Time: 1718	Date/Time From: 05/28/2017 0730      SUN	Date/Time To: 05/28/2017 1930      SUN

**4. Basic Radio Channel Use:**

Zone Group	Ch #	Function	Channel Name/Trunked Radio System Talkgroup	Assignment	RX Freq	RX Tone/NAC	TX Freq	TX Tone/NAC	Mode (A,D, or M)	Remarks
2	1	TACTICAL	V FIRE 21	INITIAL ATTACK	154.2800N	NONE	154.2800N		A	INITIAL ATTACK W/ OSCEOLA NF
2 WEST	2	COMMAND	S. FOSTER		159.1200N	NONE	151.3700N	100.0	A	
2 EAST	3	COMMAND	CORNELIA	DIV M/N,O	159.1200N	NONE	151.3700N	82.5	A	STAGING, ROAD MAINT EAST
2 ALL DIVISIONS	4	AIR TO GROUND	A/G REQUEST	ALL DIVISIONS	169.2000N	NONE	169.2000N	NONE	A	BY REQUEST ONLY
2	5	COMMAND	GFC EDDY	GA FORESTRY	159.4650N	NONE	151.1450N	123.0	A	GA FORESTRY ONLY
2 EAST	6	COMMAND	GA BEND	UNASSIGNED	159.2700N	156.7	151.1000N	156.7	A	
2 NORTH	7	COMMAND	FARGO RPT	DIV F	159.2700N	156.7	151.1000N	100.0	A	IA WEST, IA EAST, ROAD MAINT WEST
2 SOUTH	8	COMMAND	BAKER RPT	DIV A, B, C, Y, Z	159.2700N	156.7	151.1000N	123.0	A	IA WEST, IA EAST, ROAD MAINTENANCE SOUTH
2	9	TACTICAL	COMPACT	DIV C, M/N, Y	159.2850N	NONE	159.2850N	156.7	A	
2	10	TACTICAL	REFUGE TAC 1	STAGING	168.3500N	NONE	168.3500N	NONE	A	DIV Z, ROAD MAINT EAST, WEST, SOUTH
2	11	TACTICAL	OSCEOLA PROJECT	DIV O, IA WEST	163.7125N	NONE	163.7125N	NONE	A	
2	12	TACTICAL	FFS 199	DIV A, IA EAST	159.4425N	NONE	159.4425N	NONE	A	
2	13	TACTICAL	FFS 200	DIV B, DIV F	159.4125N	NONE	159.4125N	NONE	A	
2 ALL DIVISIONS	14	AIR TO GROUND	AIR TO GRD 66	A/G PRIMARY	166.6750N	NONE	166.6750N	NONE	A	AIR / GROUND PRIMARY
2 ALL DIVISIONS	15	AIR TO GROUND	AIR TO GRD 72	A/G SECONDARY	169.1500N	NONE	169.1500N	NONE	A	AIR / GROUND SECONDARY
2 ALL DIVISIONS	16	AIR GUARD	AIR GUARD	ALL DIVISIONS	168.6250N	NONE	168.6250N	110.9	A	EMERGENCY AIRCRAFT COMMUNICATIONS

**5. Special Instructions:**

**WEST MIMS DAY PLAN**

<b>6. Prepared By</b> (Communications Unit Leader)	Name: PAUL NOA, COML-T	Signature:
<b>ICS 205</b>	<b>IAP Page</b>	Date/Time: 05/27/2017 1718

## PHONE LIST - WEST MIMS FIRE

Position	Name	Phone Number	Position	Name	Phone Number
<b>UNIFIED COMMAND</b>			<b>Finance</b>	General	912-637-5109
NIMO IC	Mike Quesinberry	540-230-1262	IBA	Carla Schamber	202-631-2254
Southern States IC (t)	Keith Mousel	352-442-2891	Fin Chief	Betty Palmiotto	850-408-6564
Southern States IC	Sam LeNeave	850-228-7778	Dep Fin Chief	Dawn Crouch	352-206-5634
Liason Officer	Daniel Stanley	850-661-1674	Comp/Claims	Brett Steffen	229-561-4378
Liason Officer	Mark Allen Dozier	478-251-4015	Procurement	Tommy Price	863-661-4019
Liason Officer	Paul Stevens	252-216-6316	Time	Marci Glover	850-373-8254
Human Resources	Larry Sandoval	229-561-3477			
<b>PUBLIC INFORMATION</b>	Land Line	912-637-5108	<b>Telephone lines at ICP</b>		
<b>Information Desk</b>		904-452-4627	<b>Information/PIO</b>		912-637-5132
NIMO Public Information	Judith Downing	530-908-5128	<b>Information</b>		912-637-5108
Public Information	Annaleasa Winter	904-705-3931	<b>Air Ops</b>		912-637-5133
Refuge Public Info	Susie Heisey	912-286-3110	<b>Ordering</b>		912-637-5107
<b>AGENCY REPRESENTATIVES</b>			<b>Ordering</b>		912-637-5136
Refuge FMO	Reese Kerbow	912-276-0167	<b>Ordering Fax</b>		912-637-5104
Refuge AFMO	Reggie Forcine	912-614-4041	<b>Supply</b>		912-637-5138
Refuge Manager	Mike Lusk	912-390-2193	<b>Ground Support</b>		912-637-5105
DNR Agency Liaison	SGT. Patrick Dupree	404-694-5596	<b>Finance</b>		912-637-5109
Ware Co EMA	Bill Parham	229-425-4549	<b>Finance Fax</b>		912-637-5110
Clinch Co EMA	Will Joyce	912-520-8581	<b>Operations</b>		912-637-5112
Lanier Co EMA	Randy Patten	229-482-5070	<b>Plans FAX</b>		912-637-5115
Charlton Co EMA	Bruce Young	912-390-2022	<b>Plans / Checkin</b>		912-637-5137
Charlton Co Sheriff's Office	Inv. Clay Burnsel	912-276-2628	<b>Demob</b>		912-637-5113
Georgia EMA	Kristen Higgs	912-387-5490	<b>Communications</b>		912-637-5116
NC-Forest Service	Robbie Perry	910-995-2572	<b>Telephone lines at Eastside Camp</b>		
Billy Estep	EMS Dir/Nassau Coun	904-813-3476	<b>Operations</b>		912-496-2278
Baker Co EMA	Beck Parker	904-955-6454	<b>Supply</b>		912-496-3116
Columbia Co S.O.	Shayne Morgan	386-693-2248	<b>Communications</b>		912-496-2293
Clinch CO Fire Chief	Danny Strickland	912-487-6493	<b>Medical</b>		912-496-2289
<b>PLANNING</b>			<b>LAND OWNERS AND OTHER CONTACTS</b>		
NIMO PSC	Darrel Schwilling	404-805-3159	Steve Davis	Am Forest Mgmt	912-614-1828
PSC ICP	Duane Durgee	352-278-0446	Allen C. Cross	Rayonier US Forest	904-796-7929
PSC Eastside Camp	Joe Bishop	352-516-9767	Dave Gather	Okie Electric	912-390-9755
Fire Behavior Analyst	Bradley Smith	470-366-6313	Chad Edwards	N Fork Southern RR	540-797-9918
Fire Behavior Analyst(t)	Andrew Taylor	541-219-1205	Bryan Robbins	CSX RR	912-387-3910
IMET	Scott Kennedy	252-269-9497	Steve Magnolia	FD Coordinator	904-537-5853
THSP-ARA	Sean Luchs	240-499-6654	Terri Jenkins	FWS FD/VFD Contact	912-313-4225
READ	Rocky Chesser	912-276-3232	Ned Neenan	Legacy Forestry	352-317-0738
FWS READ	Howard McCllough	912-276-0552	Ken Zaydel	Social Circle FD	404-205-2738
RESL	Shaun Stewart	352-428-7453	Royce Proctor	OKE Electric Coop	912-282-6873
RESL (t)	Jeff Turner	865-684-0093		Okefenokee NWR	912-496-7366
SITL	Scott Crosby	352-275-4332	Adam McCullough	NWR IA Duty Off	912-496-4177
SITL 1	Stuart Coombs	470-366-6309	SFSP	Bryan Grey	912-637-5274
SITL 2	Stuart Coombs	936-827-4233	GOAL	Jim Barrett	229-356-1993
GISS	Clint Roberts	601-408-4226	SOPL	Mark Hale	406-861-4876
GISS	Domonic Marcanio	850-380-1656	LTAN (t)	Wesley Hall	575-973-0726
Training Specialist	David Hunt	863-221-6146			Ver 27May17
Human Resources Sp	Larry Sandoval	229-561-3477			
Demob	Bobby Cahal	912-637-5113			
Demob(t)	Meredith Butcher	541-806-0822			



**PHONE LIST WEST MIMS FIRE**

<b>Position</b>	<b>Name</b>	<b>Phone Number</b>	<b>Position</b>	<b>Name</b>	<b>Phone Number</b>
<b>OPERATIONS</b>	Land Line	912-637-5112	<b>SAFETY</b>		
NIMO Ops	Kyle Smith	540-855-0233	IPA	Gene Madden	404-805-7970
Lead Ops	Rick Dolan	352-353-5101	Safety Officer	Larry Grubbs	850-228-7755
West Field Lead Ops	Buck Kline	912-678-2694	Safety Officer	Larry Connell	352-303-3921
East Field Lead Ops	Fred Boehm	954-347-8071	Safety Officer (t)	Clay Stephens	702-575-0392
Planning Ops	Trent Ingram	229-726-0285	<b>LOGISTICS</b>		
Planning Ops (t)	Phil Daniels	720-315-4240	NIMO Logistics Chief	Sally Browning	404-805-5063
<b>Branch I</b>	Lance Delgado	541-639-2610	Logistics Chief East Camp	Jim Peters	352-942-7218
Division B	Jerry Van Dyme	503-580-8130	Logistics Section Chief (t)	David McVay	850-625-5142
Division C	Chris Roberts	912-213-3138	Facilities Unit Leader	Dennis Evans	478-957-9709
Division D	Walter Bowers	850-625-6630	Supply Unit Leader	Travis Shidal	
Division F	Jason Forthofer	406-207-5587	East Camp Grd Support	Douglas Crocker	352-235-2352
Division F	Jeff Coburn (t)	541-207-4066	Ground Spt Unit Ldr	Charles Weathers (nights)	
IA Group East	Greg Buckalew	252-475-8012	Ground Spt Unit Ldr	Mike Stigler	386-837-2289
IA Group (t)	Arturo Gasdik	707-834-8205	Ground Spt Unit Ldr	Glen Simmons	386-855-0379
Road Maint Group	Candice Kutrosky	719-651-0669	East Camp Grd Support	Mike Nelson	484-880-7494
Clinch EMS		229-569-9280	Ordering Manager	Mark McClellan	478-733-2606
<b>Branch III</b>	Marc Crain	503-307-9023	Food Unit Leader	Steve Marshall	352-464-2721
Division M/N	Karen Scholl	909-553-7731	Security Manager	Greg Blanks	912-346-7367
Division M/N (t)	Chris Rankin	307-359-1997	Medical Unit Leader	Steve Russo	917-923-3980
Division O	Shawn Alexander	678-897-9137	East Medical Unit Leader	Brad Burns	470-366-6318
Division O(t)	Michael Gue	305-338-6069	West Medical Unit Leader	Travis McGowen	470-532-8809
IA Group West	Ron Calhoun	478-290-9755	<b>Communications Unit</b>	<b>24 Hour</b>	912-637-5116
STAM Eastside Camp	Chris Rudd	541-660-0634	Communications Unit Ldr	Charles Radcliff	386-330-4162
Golden Isle EMS		229-300-0619	Communications Unit Ldr (t)	Paul Noa	850-276-5428
<b>Branch IV</b>	Steve Miller	386-937-0554	INCM	Gavin Walter	352-634-1174
Division A(t)	Jeff Bostwick	575-694-0280	<b>East Camp Communications</b>		<b>470-366-6306</b>
Division Y	Randy Gregory	850-519-3330	<b>PLANNING</b>		
Division Z	Jason Longfellow	386-212-9871	FOBS Lead	Lew Becker	541-815-2909
Refuge Advisor	Reggie Forcine	912-614-4041	FOBS	Brad Schuette	530-351-5306
Florida Contingency	Keith Osteen		FOBS	Reed Heckly	509-690-1242
FWS Contingency	Rocky Chesser	912-276-3232	FOBS	Evan Haugan	470-366-6307
FFS Contingency	John Raulerson	386-292-5652	FOBS	Brian Boatman	209-559-8184
FFS Contingency	Andy Lamborn	383-365-4441	FOBS	Jason Kanmann	775-815-8050
Okenfenokee EMS		912-288-5703	FOBS	Happy Hoppe	530-921-4431
STAM Bethea	Adam Dummer	831-238-0991	GISS	Brendan Mullholland	352-255-9094
<b>Road Maint Branch</b>	Bob Little	231-690-6426	ITSS West	Randy Fountain	470-366-6310
West	David Smith	850-686-2970	ITSS West	Dean Groe	470-366-6311
East	Chris Craddy	520-275-6747			
South	Andrew Branson	530-598-4126			
<b>AIR OPERATIONS</b>					
AOBD	John Bragg	423-483-2798			
ATGS	Ken McLaughlin	813-997-0317			
ATGS	Mark Nunez	805-975-5227			
ASGS	Al Driesback	805-703-0649			
HEB2-Pogo	Marc "Boomer" Rudkin	307-287-0440			
HEB1 - Lake City	Brad Nelson	559-349-6793			
Pogo Helibase (Hardline)		912-496-4415			
Lake City Helibase (Hardline)		561-512-6333			Ver 27May17

# HEALTH AND SAFETY MESSAGE

*Remember – Safety is not a job; it is a way of life.*

**INCIDENT:** West Mims Fire      **DATE:** Sunday, May 28, 2017

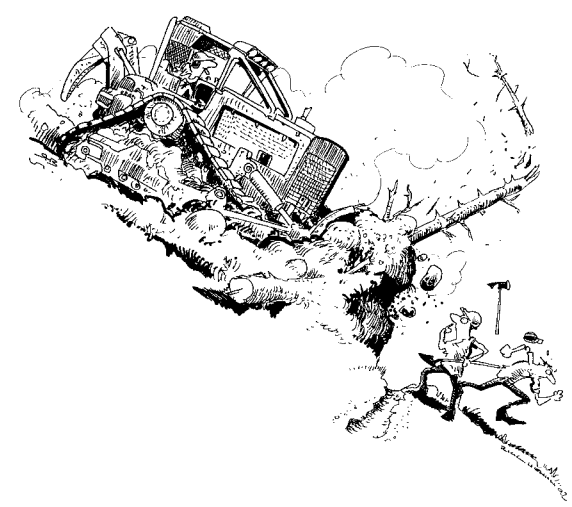
**Major Hazards & Risks**    Communications , Hydration, Heavy Equipment

**Communications:** *Communications are key to safe and effective fire fighting. Communications begin at the initial crew briefing. Know what command frequency to use and a cell phone number as a back-up for your supervisor.*

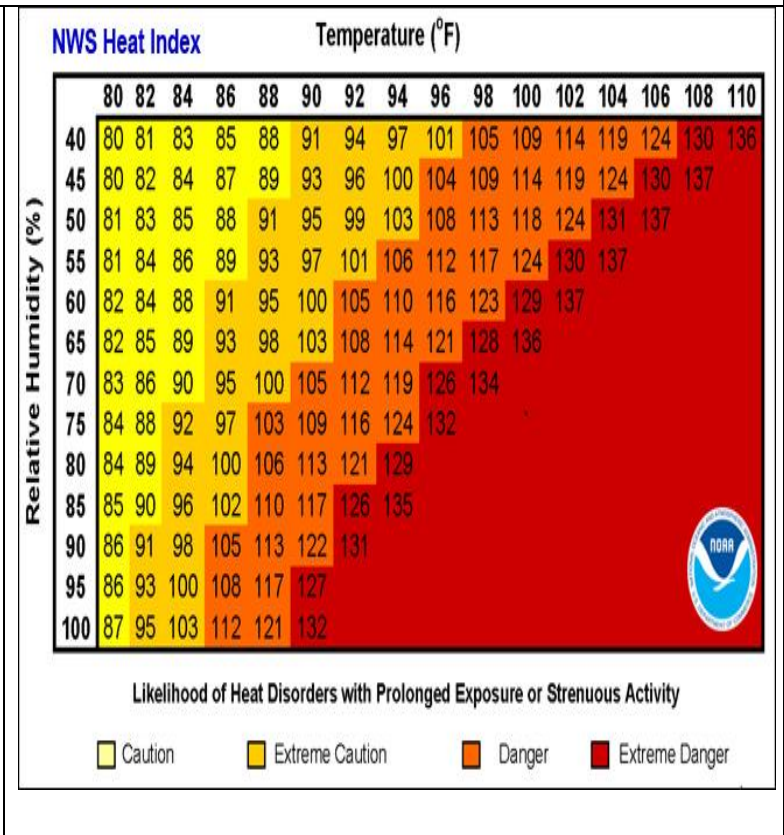
**Hydration:** *Conditions are getting hotter. The Heat Index is a measure of how hot it really feels when relative humidity is factored in with the actual air temperature. To find the Heat Index temperature, look at the Heat Index Chart below. Heat index will be up near 101 today. Drink 2 waters to every Gatorade. Never mix Bottled Gatorade with water; it upsets the formula that is designed for easy digestion.*

**Heavy Equipment:** *Tractor plows are essential on this fire, **but tractors need good operators!** If you are an operator, take care of your health and don't injure yourself. Logging operations adjacent to the incident are on-going and will increase in the near future. Be aware of all logging operations and vehicles exiting and entering highways. A lot of equipment is working in and around this incident. Know your travel routes, both capacity and clearances. **Stay clear of equipment work areas** – a minimum of 2.5 tree lengths. Use extra caution around logging equipment in the fire area.*

**Working with Heavy Equipment!**



5. UNINFORMED ON STRATEGY, TACTICS AND HAZARDS



*Southern Area State IMT Safety Officers: Larry, Larry, Rob(t), Luke(t)*



## Human Resource Message

### Deep Thought by Jack Handy

*“One thing vampire children have to be taught early on is, don’t run with wooden stakes.”*

Watch your thoughts;  
They become words.

Watch your words;  
They become actions.

Watch your actions;  
They become habits.

Watch your habits;  
They become character.

Watch your character, it becomes your destiny.

Be careful in what you say and do towards others. Protecting Civil Rights is everyone’s responsibility.

**Be safe and thank you for giving your best!!!**

Human Resource Specialist: Larry Sandoval  
Incident: West Mims

# MEDICAL PLAN (ICS 206 WF)

1. Incident/Project Name			2. Operational Period					
West Mims Fire			Date/Time 5/28/17 0730 - 1930					
3. Ambulance Services								
Name	Complete Address		Phone		Advanced Life Support (ALS)			
					Yes No			
Clinch County EMS	1050 Valdosta Hwy Homerville Ga		229-569-9280		YES			
Golden Isle EMS	210 West Park Ave. Valdosta Ga		229-300-0619		YES			
Okefenokee EMS	611 Riverside Ave. Waycross Ga		912-288-5703		YES			
4. Air Ambulance Services								
Name	Phone		Type of Aircraft & Capability					
Air Methods	888-763-1010		AS 350 with night vision capabilities					
Air Evac	888-269-6006		206 L1 + with night vision capabilities					
Trauma	800-223-4878		Bell 407 & EC153 both with night vision capabilities					
5. Hospitals								
Name Complete Address	GPS Datum – WGS 84 Coordinate Standard Degrees Decimal Minutes DD° MM.MMM' N - Lat DD° MM.MMM' W - Long		Travel Time Air Gnd		Phone	Helipad Yes No		Level of Care Facility
	Lat:	Long:						
Memorial Satilla Health 1900 Teveau St. Waycross GA 31501	N 31' 13.452	W 82' 20.875	15 mins	45 mins	912-283-3030	<input checked="" type="checkbox"/>	<input type="checkbox"/>	Level III
Clinch Memorial 1050 Valdosta Hwy Homerville Ga 31634	N 31' 01.975	W 82' 45.850	20 mins	30 mins	912-487-5211	<input checked="" type="checkbox"/>	<input type="checkbox"/>	Level IV
Ed Frazier Hospital N. 3 <sup>rd</sup> Street MacClenny Fl 32036	N 30' 28.482	W 82' 11.896	15 mins	45 mins	904-259-3151	<input checked="" type="checkbox"/>	<input type="checkbox"/>	Level IV
Shands Jacksonville 655 West 8 <sup>th</sup> Street Jacksonville Fl 32209	N 30' 20.890	W 81' 39.862	45 mins	90 mins	904-224-0411	<input checked="" type="checkbox"/>	<input type="checkbox"/>	Level I Trauma Center
UF Shands Burn Center 1600 SW Archer Rd. Gainesville Fl 32610	N 29' 38.648	W 82' 21.189	45 mins	105 mins	352-265-8932	<input checked="" type="checkbox"/>	<input type="checkbox"/>	Burn Center
<b>IWI IC Responsibilities:</b>								
<ul style="list-style-type: none"> <li>-Take charge of the scene – inform the Division Supervisor and Communications that you are the IWI IC and establish radio communications</li> <li>-Assign or begin patient assessment (9 Line) and first aid.</li> <li>-Determine patient transportation through consultation with line medical personnel and Medical Unit Leader.</li> <li>-Order transportation resources through Communications as early as possible.</li> <li>-Notify Communications as resources arrive and any patient status changes.</li> <li>-Names of injured or deceased individuals will not be transmitted on the radio.</li> <li>-Initiate documentation for future investigation; if a line safety officer is available, assign them to lead documentation.</li> <li>-Conduct an After Action Review to determine successes, areas to improve and lessons learned</li> </ul>								

## MEDICAL PLAN (ICS 206 WF)

6. Division   Branch   Group	
<b>DAY MEDIC</b>	
Division A - Martin Carrillo-EMPF	619-933-5546-Channel-8 COMMAND
Division B – Coby Saurey-EMPF	470-366-6302-Channel-8-COMMAND
Division C - Colin Stenhouse EMPF	470-366-6308-Channel-8-COMMAND
Division D - Rodney Schmidt EMPF	470-366-6317-Channel-2-COMMAND
Division F - Lionel Van Gorp - EMPF	470-5328799-Channel-7-COMMAND
Division M/N - Stephen Wolfstich- EMPF	520-508-9807-Channel-3-COMMAND
Division M/N – Wade Allen - EMPF	928-240-0106-Channel-3-COMMAND
Division O - Bryan Warner- EMPF	470-366-6263-Channel-3-COMMAND
Division Y – Alyse Guiterriez - EMPF	602-999-8011-Channel -8-COMMAND
Division Z – John Heck - EMPF	602-571-2505-Channel -8-COMMAND
<b>Medical Station WEST</b>	
MEDL office – Jill Hempelman- EMPF	623-986-1587
<b>Medical Station EAST</b>	
MEDL Station - Mike Fincham- EMPF	530-925-1267
<b>Branch I</b>	
Clinch County EMS Ambulance – ALS - 0730-1930	470-532-8806
<b>Branch III</b>	
Golden Isle Ambulance – ALS - 0730-1930	912-602-9224
<b>Branch IV</b>	
Okefenokee EMS Ambulance – ALS - 0730-1930	470-532-8797

7. Prepared By (Medical Unit Leader)	8. Date/Time	9. Reviewed By (Safety Officer)	10. Date/Time
Stephen Russo MEDL (917) 923 3980 West Medical Travis McGowen MEDL (T) 470-532-8809 East Medical Brad Burns MEDL (T) 470-366-6318	5/27/17	Larry Grubbs SOF1 850-228-7755	5/27/2017

## May 26<sup>th</sup> Photo of the Day Winner



After a long day... Smoke settles on the West Mims Fire

Please contact John @ (719) 569-6040

To claim your T- Shirt

There will be another T-Shirt winner tomorrow

So keep sending us pictures of what you are doing out there... You could be our next winner!!

## WEST MIMS FIRE - RESTAURANT SERVICE

Saturday, May 27, 2017

Breakfast \$11.00 Lunch \$12.00 Dinner \$23.00

### Valdosta:

- Waffle House (S193) – 1819 W. Hill Dr., Valdosta, GA 31601 (229) 834-4907
- Mama Junes (S503) – 3286 Inner Perimeter Road, Valdosta, GA 31602 (229) 292-4491 (Hours: 1000-2130 Mon.-Sat., 1030-2000 Sun.)
- Cracker Barrel – 1195 St. Augustine Rd., Valdosta, GA (229) 244-5258
- Sonny's BBQ -1701 Norman Dr., Valdosta, GA (229)241-8090 (Mon.-Thurs. 11:00 a.m.-9:30 p.m.) (Fri.-Sun. 11:00 a.m.-10.00 p.m.)
- Chick-Fil-A – 1100 N St. Augustine Rd., Valdosta, GA (229)247-2625 (Mon.-Sat. 6:00 a.m. 10:00 p.m.) Closed on Sundays.

### Fargo:

- Suwannee River Outfitters (S117) - P.O. Box 94 Fargo, Ga 31631  
Store# (912) 637-5114 Bonnie Griffis (Owner) Cell# (229)460-6465
- Suwannee River Café (S118) - 190 Day Ave Fargo, GA 31631  
Store# (912) 637-5307 Lorene Odom (Owner)

### Lake City:

- Waffle House (S940) – 3639 W. US Hwy. 90 Lake City, FL 32055  
Store# (385) 755-9066, Marilyn (Manager) (386) 344-2365
- Waffle House (S976) – 2963 W. US Hwy. 90 Lake City, FL 32055 Store# (386) 752-7742
- Huddle House (S1333) – Store# (386) 466-1144
- Sonny's BBQ – 3177 W. Hwy. 90, Lake City, FL 32055 (386) 752-1117
- Texas Roadhouse – 3039 W. Hwy. 90, Lake City, FL 32055 (386) 758-0074. (Sun.-Thurs. 11:00 a.m.-10:00 pm) (Fri.-Sat. 11:00 a.m.-11:00 pm)

### Kingsland:

- Waffle House (S951) – 1201 East Kind Avenue, Kingsland, GA 31548  
Store # (912) 729-5690 Allen Newcomb (Manager) (770) 330-4446
- Cracker Barrel – 1200 Boone Ave. (912) 576-1991 (Sun.-Thurs. 6:00 a.m. – 10:00 p.m.)(Fri. – Sat. 6:00 a.m. – 11:00 p.m.)
- Longhorn Steakhouse – 121 Crown Pointe Pkwy. (912) 576-2811 (Sun. – Thurs. 11:00 a.m. – 10:00 p.m.) (Fri. – Sat. 11:00 a.m. – 11:00 p.m.)

### Waycross:

- Huddle House (S977) - 1010 Memorial Drive Waycross, GA 31501  
Store# (912) 490-4353
- Hog-n-Bones – 1000 Memorial Drive, Waycross, GA 31501 (912) 285-3657 (Mon. –Sat. 6:00 a.m.-9:00 p.m.) Closed Sundays
- Applebee's – 1901 Memorial Dr. (912) 285-9359 (Sun. – Thurs. 11:00 a.m. - 10:00 p.m.) (Sat. – Sun 11:00 a.m. – 11:00 p.m.)

### Homerville:

- Jerry J's (S716) – 89 E. Dame Avenue, Homerville, Ga 31634  
Store# (912) 487-2232 Richard Crosby (Owner) (912) 286-6720
- Carters Fried Chicken (S741) – 277 Lakeview Drive Homerville, GA 31634  
Store# (312) 487-2700 Lena Fitzgerald (912) 487-8402 Jeff Brown (912) 487-8004

### Folkston:

- Okefenokee Adventures (S593) – 4159 Suwannee Canal Rd., Folkston, GA 31537  
Store# (912) 496-7156 (temporarily closed)
- Okefenokee Restaurant (S596) – 1507 3<sup>rd</sup> Street, Folkston, Ga 31537  
Store# (912) 496-3263 (Mon.-Sat. 7:00 a.m.-9:00 p.m.) Closed Sundays.
- Quick Chick (S595) – 107 2<sup>nd</sup> Street, Folkston, GA 31537 Store# (912) 496-7044 (Mon.-Sat. 10:00 a.m.-8:30 p.m.) Closed Sundays.

### Macclenny, Fl:

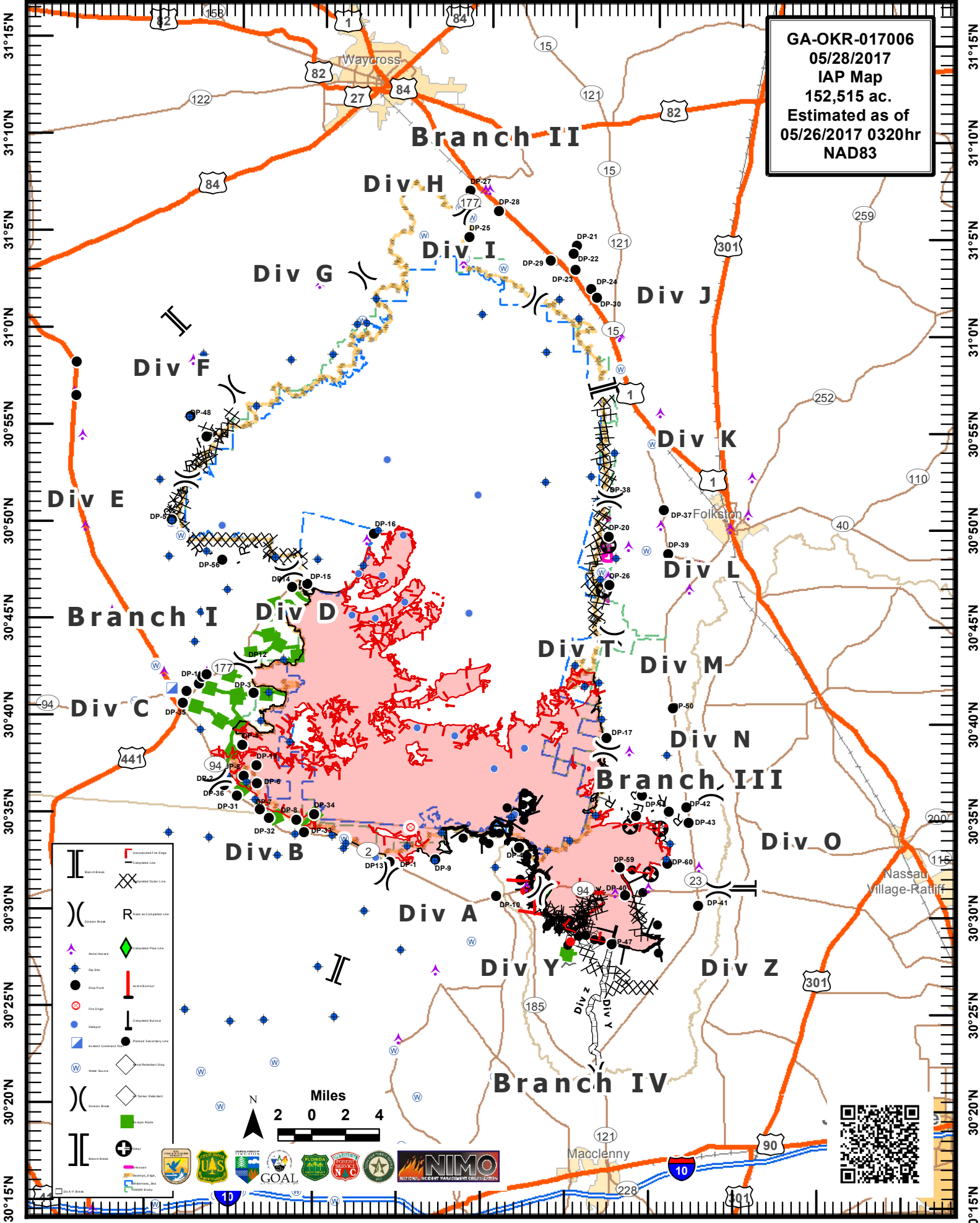
- Chicken Coop 457 W. Macclenny Ave. (904) 259-3200 (Mon. – Wed. 11:00 a.m. – 8:00 p.m.) (Thurs. – Fri. 11:00 a.m. – 9:00 p.m.) (Closed Sat. & Sun.)
- Woody's Bar-B-Q 1482 S. 6<sup>th</sup> St. (904) 259-5800 (Fri. – Sat. 11:00 a.m. – 11:00 p.m.) (Sun. 11:00 a.m. – 9:00 p.m.) (Mon. – Thurs. 11:00 a.m. – 10:00 p.m.)

**WEST MIMS DEMOB**

<u>Demob Date</u>	<u>Type</u>	<u>Request #</u>	<u>Name</u>	<u>Demob Date</u>	<u>Type</u>	<u>Request #</u>	<u>Name</u>	<u>Demob Date</u>	<u>Type</u>	<u>Request #</u>	<u>Name</u>
5/28/2017	ENG6	E-656	T6-161	5/29/2017	WTS2	E-600		5/29/2017	CACB	C-10.7	MCKENZIE
	ENG6	E-657	2661 Brazoria Refuge		WTS2	E-588			DRIV	E-73.1	CLARK
	ENG6	E-662	Engine 603		ENG6	E-761	OH-OHS-E62		DRIV	E-74.1	WOOD
	ENG6	E-726	Engine 5670		ENG6	E-652	MS-MSR-E611		DRIV	E-75.1	TANNER
	ENG6	E727	IN Engine 5671		ENG6	E-157	Osceola		ENGB	E-157.8	KNOWLES
	WTS2	E-347	Tipton						ENGB	E-157.9	ROOKER
	WTS2	E-588	Hassell		FFT1	O-585	Harris		FFT2	E-157.1	WASHINGTON
	ENG6	E-262	Wildland Svcs		HEQB	O-601	Foreman		WTOP	E-265.2	CORNITT
	DIVS	O-514	Buckalew		STEQ	O-602	Teigen		TTOP	E-508.4	POLLARD
	FFT2	O-315	Meadows		STEQ	O-603	Lico		EQTR	O-559	TOTTEN
	HEQB	O-509	Kutrosky		STEQ	O-613	Gallagher		RADO	O-574	GOROSPE
	HEQB	O-572	Smith		STOP	O-580	Seal		STOP	O-580	HARRIS
	STEQ	O-548	Oltrogge		STOP	O-733	Goosman		TFLD	O-592	MIDDLETON
	OSC2	O-626	Daniels		TFLD	O-592	Middleton		TFLD	O-595	STEPHENS
	HEQB	O-601	Foreman		TFLD	O-595	Stephens		TFLD	O-596	ALLMAN
	SPUL	O-544	Zabka		TFLD	O-596	Allman		STEQ	O-602	TEIGEN
	SOF2	O-586	Young		ENGB	E-656.1	Bennett		STEQ	O-603	LICO
					FFT2	E-656.2	Daughherty		FACL	O-607	BEE
	ENGB	E-255.4	Trout		FFT2	E-656.3	Mosley		PIO2	O-608	MCKENZIE
	ENGB	E-255.5	Emmons		FIRB	E-447.1	Yancick		RESL	O-611	WINSHIP
	FFT1	E-255.6	Phillips		CRWB	E-447.2	Thivener		RESL	O-612	TURNER
	TPOP	E-688.2	Mason		FFT2	E-447.3	Mackiewicz		STEQ	O-613	GALLAGHER II
	TPOP	E-689.2	Bird		ENGB	E-447.4	Freeman		SPUL	O-614	STILLER
	ENGB	E-726.1	Ramirez		ENGB	E-447.5	Perez		STOP	O-733	GOOSMAN
	FFT2	E-726.2	Derkacz		FEMO	E-447.6	Forget				
	ENGB	E-727.1	Grismer		FEMO	E-447.7	Malone				
	FFT2	E-727.2	Haberin		HMGB	480	Hunt				
	FFT2	O-315	Meadows		BUYM	496.2	Jenkins				
	DIVS	O-514	Buckalew		BUYM	496.3	Loth				
	RCDM	O-562	Chamberland		BUYM	496.2	Thompson				
					BUYM	496.6	McKelvey				
					SOF2	O-452	Walter				
					EQTR	O-599	Totten				



GA-OKR-017006  
05/28/2017  
IAP Map  
152,515 ac.  
Estimated as of  
05/26/2017 0320hr  
NAD83



31°15'N  
31°10'N  
31°5'N  
31°0'N  
30°55'N  
30°50'N  
30°45'N  
30°40'N  
30°35'N  
30°30'N  
30°25'N  
30°20'N  
30°15'N

31°15'N  
31°10'N  
31°5'N  
31°0'N  
30°55'N  
30°50'N  
30°45'N  
30°40'N  
30°35'N  
30°30'N  
30°25'N  
30°20'N  
30°15'N





This Page Intentionally left blank.

# MEDICAL PLAN (ICS 206 WF)

## Medical Incident Report

**FOR ALL MEDICAL EMERGENCIES: IDENTIFY ON SCENE INCIDENT COMMANDER BY NAME AND POSITION AND ANNOUNCE "MEDICAL EMERGENCY" TO INITIATE RESPONSE FROM IMT COMMUNICATIONS/DISPATCH.**

Use items one through nine to communicate situation to communications/dispatch.

**1. CONTACT COMMUNICATIONS/DISPATCH**

*Ex: "Communications, Div. Alpha. Stand-by for Priority Medical Incident Report." (If life threatening request designated frequency be cleared for emergency traffic.)*

**2. INCIDENT STATUS: Provide incident summary and command structure.**

Nature of Injury/Illness		Describe the injury (Ex: Broken leg with bleeding)
Incident Name		Geographic Name + "Medical" (Ex: Trout Meadow Medical)
Incident Commander		Name of IC
Patient Care		Name of Care Provider (Ex: EMT Smith)

**3. INITIAL PATIENT ASSESSMENT: Complete this section for each patient. This is only a brief, initial assessment. Provide additional patient info after completing this 9 Line Report.**

Number of Patients:	Male / Female	Age:	Weight:
Conscious? <input type="checkbox"/> YES <input type="checkbox"/> NO = MEDEVAC!			
Breathing? <input type="checkbox"/> YES <input type="checkbox"/> NO = MEDEVAC!			
Mechanism of Injury: <i>What caused the injury?</i>			
Lat/Long (Datum WGS84) <i>Ex: N 40° 42.45' x W 123° 03.24'</i>			

**4. SEVERITY OF EMERGENCY, TRANSPORT PRIORITY**

SEVERITY	TRANSPORT PRIORITY
<input type="checkbox"/> URGENT-RED Life threatening injury or illness. <i>Ex: Unconscious, difficulty breathing, bleeding severely, 2° – 3° burns more than 4 palm sizes, heat stroke, disoriented.</i>	Ambulance or MEDEVAC helicopter. Evacuation need is IMMEDIATE.
<input type="checkbox"/> PRIORITY-YELLOW Serious injury or illness. <i>Ex: Significant trauma, not able to walk, 2° – 3° burns not more than 1-2 palm sizes.</i>	Ambulance or consider air transport if at remote location. Evacuation may be DELAYED.
<input type="checkbox"/> ROUTINE-GREEN Not a life threatening injury or illness. <i>Ex: Sprains, strains, minor heat-related illness.</i>	Non-Emergency. Evacuation considered Routine of Convenience.

**5. TRANSPORT PLAN:**

Air Transport: (Agency Aircraft Preferred)

<input type="checkbox"/> Helispot	<input type="checkbox"/> Short-haul/Hoist	<input type="checkbox"/> Life Flight	<input type="checkbox"/> Other
Ground Transport:			
<input type="checkbox"/> Self-Extract	<input type="checkbox"/> Carry-Out	<input type="checkbox"/> Ambulance	<input type="checkbox"/> Other

**6. ADDITIONAL RESOURCE/EQUIPMENT NEEDS:**

<input type="checkbox"/> Paramedic/EMT(s)	<input type="checkbox"/> Crew(s)	<input type="checkbox"/> SKED/Backboard/C-Collar
<input type="checkbox"/> Burn Sheet(s)	<input type="checkbox"/> Oxygen	<input type="checkbox"/> Trauma Bag
<input type="checkbox"/> Medication(s)	<input type="checkbox"/> IV/Fluid(s)	<input type="checkbox"/> Cardiac Monitor/AED
<input type="checkbox"/> Other (i.e. splints, rope rescue, wheeled litter)		

**7. COMMUNICATIONS:**

Function	Channel Name/Number	Receive (Rx)	Tone/NAC *	Transmit (Tx)	Tone/NAC *
<i>Ex: Command</i>	<i>Forest Rpt, Ch. 2</i>	<i>168.3250</i>	<i>110.9</i>	<i>171.4325</i>	<i>110.9</i>
COMMAND					
AIR-TO-GRND					
TACTICAL					

\*(NAC for digital radio system)

**8. EVACUATION LOCATION:**

Lat/Long (Datum WGS84) <i>EX: N 40 42.45' x W 123 03.24'</i>	
Patient's ETA to Evacuation Location:	
Helispot/Extraction Size and Hazards:	

**9. CONTINGENCY:**

<b>Considerations:</b> <i>If primary options fail, what actions can be implemented in conjunction with primary evacuation method? Be thinking ahead...</i>	<b>REMEMBER:</b> <b>Confirm ETA's of resources ordered Act according to your level of training Be Alert. Keep Calm. Think Clearly. Act Decisively.</b>
--	--