

INCIDENT ACTION PLAN

WEST MIMS FIRE

OPERATIONAL PERIOD

MAY 29, 2017

0730-1930

SOUTHERN STATES TYPE-1 IMT

QR for IAP



GA-OKR-017006

FWS FFF2000000KYJ70

USFS PRKYJ717_1502 (P)

NPS PFFSKJ7017.00.1

QR for Maps

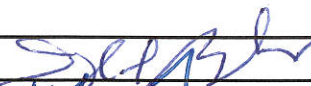



Schedule


0730 Pre-Op Briefing
0800 Morning Briefing
1100 C & G
1600 Pre Planning Meeting
1700 Planning Meeting



INCIDENT OBJECTIVES (ICS 202)

1. Incident Name:		2. Operational Period: DAY SHIFT 0730-1930	
WEST MIMS		Date/Time From: 05/29/2017 0730 MON	Date/Time To: 05/29/2017 1930 MON
3. Objective(s):			
<ul style="list-style-type: none"> • Provide for the safety and security of incident personnel and public in all incident operations through sound risk assessment and hazard mitigations. • Maintain a positive working relationship with all adjacent landowners, cooperators State and Federal partners. Inform, involve and communicate incident planning and operations with all partners. • Confine all fires that are within the Okefenokee National Wildlife Refuge, inside the Refuge and/or inside the swamp edge break if possible. Aggressively suppress all fire outside the swamp edge boundary. • In cooperation with local timberland owners, use full suppression strategies and tactics to minimize damage to private timberlands and improvements and to prevent fires outside the Refuge from entering the Refuge. • Assist in management and suppression of additional fires (new starts or breakouts) in the vicinity as approved by Agency Administrators and Unified Incident Commanders. • Protect all cultural and archeological sites and structures within the refuge. • Manage the fires cost-effectively consistent with the values at risk. • Implement structure protection as necessary for at-risk facilities and communities. • Coordinate suppression actions with assigned Refuge Resource Advisors, and/or adjoining landowners. • Conduct all operations in a harassment-free environment. There will be a no tolerance atmosphere for harassment, alcohol, or illegal drug use. Everyone will be treated with dignity and respect. • Identify and initiate suppression repair on all Divisions. 			
4. Operational Period Command Emphasis:			
Branch IV Keep fire East of the North Prong of St Mary's River; West of Nassau county Florida; and North of Baker county Florida Branch III Keep fire North of Rayonier Road 10, West of St Mary's River, and South of Stokes Road Keep fire within the Okefenokee Refuge Swamp Edge Break Boundary. Respond to initial attack fires on new starts within: *South of Suwannee Canal *Within the Okefenokee jurisdictional boundaries *Within state properties inside Perimeter Road			
General Situational Awareness:			
Utilize confine, contain, and point source protection strategies and tactics that commit operations personnel only where and when they can be successful, under conditions where important values at risk are protected with the least exposure.			
5. Site Safety Plan Required? Yes <input type="checkbox"/> No <input checked="" type="checkbox"/>			
Approved Site Safety Plan(s) Located at:			
6. Incident Action Plan (the items checked below are included in this Incident Action Plan):			
<input checked="" type="checkbox"/> ICS 202	<input type="checkbox"/> ICS 207	Other Attachments:	
<input checked="" type="checkbox"/> ICS 203	<input checked="" type="checkbox"/> ICS 208	<input checked="" type="checkbox"/> <u>PIO MESSAGE</u>	
<input checked="" type="checkbox"/> ICS 204	<input checked="" type="checkbox"/> ICS 220	<input checked="" type="checkbox"/> <u>TENTATIVE DEMOB</u>	
<input checked="" type="checkbox"/> ICS 205	<input checked="" type="checkbox"/> Map/Chart	<input checked="" type="checkbox"/> <u>SAFETY MESSAGE</u>	
<input type="checkbox"/> ICS 205A	<input checked="" type="checkbox"/> Weather Forecast/Tides/Currents	<input checked="" type="checkbox"/> <u>RESTAURANT LIST</u>	
<input checked="" type="checkbox"/> ICS 206			
7. Prepared by: JOE BISHOP	Position/Title: PSC2 (T)	Signature: 	
8. Approved by Incident Commander:		Signature: 	
ICS 202	IAP Page	Date/Time: 5/28/17 1930	

ORGANIZATION ASSIGNMENT LIST (ICS 203)

1. Incident Name:		2. Operational Period: DAY SHIFT 0730-1930	
WEST MIMS		Date/Time From: 05/29/2017 0730	Date/Time To: 05/29/2017 1930
		MON	MON
3. Incident Commander(s) and Command Staff:			
IC/UC	SAM LENEAVE; KEITH MOUSEL (T); MIKE QUESINBERRY	GIS SPECIALIST	DOMINIC MARCANIO; CLINT ROBERTS BRENDAN MULHOLLAND (T)
SAFETY OFFICER	LARRY CONNELL; LARRY GRUBBS ROB THORP (T); LUCAS MINTON (T)	INCIDENT METEOROLOGIST	SCOTT KENNEDY
INFORMATION OFFICER	ANNALEASA WINTER TODD SCHROEDER; JUDITH DOWNING	FIRE BEHAVIOR ANALYST	BRAD SMITH MIKE WARD (T); ANDREW TAYLOR (T)
LIAISON OFFICER	ALAN DOZIER DANIEL STANLEY; PAUL STEVENS	AIR RESOURCE ADVISOR	SEAN LUCHS
TECHNICAL SPECIALIST	GENE MADDEN	6. Logistics Section:	
4. Agency/Organization Representative(s):		CHIEF	EAST - JIM PETERS WEST-DAVID MCVAY (T) STEVE WEHERLY (T) SALLY BORWNING
Agency/Organization	Name	SUPPLY UNIT	WEST-LAUREN SMITH EAST-TRAVIS SHIDAL
GFC PROTECTION	FRANK SORRELLS	FACILITIES UNIT	WEST-DENNIS EVANS EAST-CURTIS ASAY
OKE REF MGR/ASSIST	MICHAEL LUSK; SARA CLARDY	GROUND SUPPORT UNIT	WEST-GLENN SIMMONS EAST-DOUGLAS CROCKER
OKE REF FMO	REESE KERBOW	COMMUNICATIONS UNIT	CHUCK RADCLIFF PAUL NOA (T)
GOAL	JIM BARRETT	MEDICAL UNIT	STEPHEN RUSSO WEST-TRAVIS MCGOWEN EAST-BRAD BURNS
FL FFS	JOHN RAULERSON	COMT	WEST-KELLY TOWE; KEVIN THROOP EAST-DAVID RADZIVILL
GEMA	KRISTEN HIGGS	FOOD UNIT	WEST-STEPHEN MARSHALL EAST-BRANTLEY SMITH (T)
NORFOLK SOUTHERN	CHAD EDWARDS	SECURITY UNIT	GREG BLANKS
CLINCH CO EMA	WILL JOYCE; RANDY PATTEN	ORDM	MARK MCCLELLAN
CHARLTON CO EMA	BRUCE YOUNG	RCDM	LAUREN SMITH; JAKE CLEVINGER
WARE CO EMA	BILLY PARHAM	EQPM	KIRBY HENNINSSSEN; JASON MCHAN
NASSAU COUNTY	BILLY E STEP	INCM	GAVIN WALTER
COLUMBIA COUNTY	SHAYNE MORGAN	NIGHT RADO	LORI GOROSPE RICHARD DODSON
BAKER CO SO	BECK PARKER	BCMG (DAY)	WEST-BOB EMRICK EAST-JAWANA STEPHENS (T)
5. Planning Section:		RADO	JOHN BURCH; DAVID POWELL HANNAH JOHNSON
CHIEF	DUANE DURGEE JOE BISHOP (T); DARREL SCHWILLING		
RESOURCES UNIT	SHAUN STEWART FRED NOACK; PEECH KELLER		
STATUS CHECKIN	JESSICA VALDEZ STACEY CLEMENSON		
DOCUMENTATION UNIT	TERI PARVIN		
SITUATION UNIT	SCOTT CROSBY STUART COOMBS		
DEMOBILIZATION UNIT	BOBBY CAHAL MEREDITH BUTCHER (T)		
ITSS	DEAN GROE; RANDALL FOUNTAIN CORY NICHOLSON (T)		
TRAINING SPECIALIST	DAVID HUNT		
HUMAN RESOURCE SPECIALIST	LARRY SANDOVAL		
		7. Operations Section:	
9. Prepared By:		Signature:	
Name: SHAUN STEWART	Position/Title: RESL		
ICS 203	Date/Time: 05/28/2017 1800		
IAP Page			

ORGANIZATION ASSIGNMENT LIST (ICS 203)

1. Incident Name:		2. Operational Period: DAY SHIFT 0730-1930	
WEST MIMS		Date/Time From: 05/29/2017 0730	Date/Time To: 05/29/2017 1930
		MON	MON
OPS SECTION CHIEF	RICK DOLAN; WEST-BUCK KLINE EAST-FRED BOEHM; BRYCE THOMAS (T); KYLE SMITH		AIR OPS BRANCH DIRECTOR JOHN BRAGG
PLANNING OPS	TRENT INGRAM		AIR SUPPORT GROUP SUPERVISOR AL DRIESBACH
Branch	I		AIR TACTICAL GROUP SUPERVISOR MARK NUNEZ; KEN MCLAUGHLIN
BRANCH DIRECTOR	LANCE DELGADO		HEB1 POGO MARC RUDKIN
DIVISION/GROUP	B	RON RUCKER; JERRY VAN DYNE KEITH FIELDS (T)	
DIVISION/GROUP	C	CHRIS ROBERTS	
DIVISION/GROUP	D	WALTER BOWERS	8. Finance/Administration Section:
DIVISION/GROUP	F	JASON FORTHOFFER	CHIEF BETTY PALMIOTTO
DIVISION/GROUP	IA WEST	RON CALHOUN	DEPUTY DAWN CROUCH (T)
			PROCUREMENT UNIT TOMMY PRICE BONNIE GRIFFIS (T)
Branch	III		COST UNIT VICKI WILSON ROBERT JESSELL (T)
BRANCH DIRECTOR	MARC CRAIN; CHRIS LUNDGREN (T)		TIME UNIT MARC GLOVER MARTI MILLER (T)
DIVISION/GROUP	IA EAST	ROCKY CHESSEY ARTURO GASDIK (T)	COMPENSATION UNIT EILEEN CROUSE BRETT STEFFEN (T)
DIVISION/GROUP	M/N	BUTCH GALBRAITH CHRIS RANKIN (T)	
DIVISION/GROUP	O	SHAWN ALEXANDER MICHAEL GUE (T)	
Branch	ROAD MAINTENANCE		
BRANCH DIRECTOR	BOB LITTLE		
DIVISION/GROUP	WEST	DAVID SMITH	
DIVISION/GROUP	SOUTH	ANDREW BRANSON	
DIVISION/GROUP	EAST	KRIS CRODDY	
Branch	IV		
BRANCH DIRECTOR	MIKE WORK KAREN SCHOLL (T)		
DIVISION/GROUP	A	TOM TALBOT JEFF BOSTWICK (T)	
DIVISION/GROUP	Y	RANDY GREGORY SEAN BASSO (T)	
DIVISION/GROUP	Z	JASON LONGFELLOW	
7b. Air Operations Branch:			
9. Prepared By:	Name: SHAUN STEWART	Position/Title: RESL	Signature:
ICS 203	IAP Page	Date/Time: 05/28/2017 1800	



To: All Incident Personnel, West Mims Fire 2017

As the Unified Command Incident Commanders, we have a policy of “zero tolerance” of inappropriate behavior during incident operations. Any form of harassment, discriminatory practices, or disrespectful behavior will not be tolerated. Known or reported acts will be dealt with appropriately.

We are particularly concerned about the perception that alcohol has a place in any of the Incident facilities. It is not appropriate to indulge in alcoholic beverages during any fire assignment.

The National Team from the Southern Region has a policy of “NO ALCOHOL” from the time of dispatch until the time of physical release from the Incident. Members of the Team voluntarily comply with this policy; all incident personnel will be expected to do so also.

We endorse, support, and expect an attitude of mutual respect for all Incident personnel and the public we serve. We also, endorse the attitude and work ethic that places “Safety First, every time on every Incident.” We expect nothing less.

<p>/s/ Keith Mousel /s/ Mike Quesinberry Incident Commanders</p>
--



Fire Weather Forecast



FORECAST NO: 52
PREDICTION FOR: Monday
SHIFT DATE: May 29, 2017
FORECAST ISSUED: 1800 May 28, 2017

NAME OF FIRE: West Mims Fire
UNIT: Okefenokee National Wildlife Refuge
Incident Meteorologist: Scott Kennedy 252-269-9497

DISCUSSION:

High pressure will continue across the Florida peninsula today with a frontal boundary dropping into central Georgia. Temperatures will again climb into the middle 90s with heat index values around 100 degrees. Minimum RH values will be around 40 to 45 percent with southwest winds gusting as high as 15 mph during the afternoon. There is a slight chance of a thunderstorm moving into the area during the evening. Patchy fog may also develop early Tuesday morning.

MONDAY:

- WEATHER: Partly cloudy.
- WIND (20 FT): Southwest 4 to 8 mph with gusts up to 15 mph.
- MAX TEMPERATURES: 93-97 MAX HEAT INDEX: 99-103 MIN RH: 40-45%
- LAL: 1 CHANCE RAIN: 10% DISPERSION (MAX): 60
- MIXING HEIGHT: 6000 RAINFALL: 0" TRANSPORT WINDS: W 20 mph

MONDAY NIGHT:

- WEATHER: Partly cloudy. A slight chance of a thunderstorm in the evening. Fog possible late.
- WIND (20 FT): Southwest 2 to 5 mph.
- MIN TEMPERATURES: 70 to 74 MAX RH: 95-100% MAX LVORI: 10
- LAL: 2 CHANCE OF RAIN: 20% RAINFALL: <0.10"

HOURLY WEATHER FORECAST (LST) Monday 1000 through Tuesday 0800

Time	1000	1200	1400	1600	1800	2000	2200	2400	0200	0400	0600	0800
Temp °F	84	91	94	96	91	86	80	77	75	73	71	74
RH %	65	50	44	42	47	57	72	79	84	93	100	95
Wind Dir	W	SW	SW	SW	SW	SW	SW	SW	W	W	W	W
Wind Spd mph	5	6	7	8	7	6	5	3	2	2	2	2
Wind Gst mph	-	12	12	15	13	-	-	-	-	-	-	-
Rain Chance%	0	0	0	10	20	20	10	10	10	10	10	10
Weather	-	-	-	-	Tstm	Tstm	Shwr	-	-	Fog	Fog	Fog

TUESDAY:

- WEATHER: Fog possible early. Partly cloudy. A chance of thunderstorms, mainly after 1700.
- WIND (20 FT): West-southwest 4 to 8 mph.
- MAX TEMPERATURES: 92-96 MAX HEAT INDEX: 99-103 MIN RH: 40-45%
- LAL: 3 CHANCE RAIN: 30% DISPERSION (MAX): 50
- MIXING HEIGHT: 6000 RAINFALL: <0.10" TRANSPORT WINDS: W 10 mph

Sunrise Monday: 6:29 am

Sunset Monday: 8:26 pm

Sunrise Tuesday: 6:29 am

Thunderstorms imply gusty and erratic winds, locally heavy rain and lightning

RAWS Observations:

Jones Island



Eddy Tower




OKE East



OKE NW



FIRE BEHAVIOR FORECAST

FORECAST NUMBER: #41	TYPE OF FIRE: Wildland
FIRE NAME: West Mims	OPERATIONAL PERIOD: 05/29/2017 Day Operational Period
DATE ISSUED: 05/28/2017	TIME ISSUED: 1800
UNIT: Okefenokee National Wildlife Refuge	Signed: Brad Smith FBAN 

FUEL ASSUMPTIONS: Fuel types include timber litter (reburn fuels), brush fuels that represent the organic swamp and bayhead fuels. The high risk fuel is the pine plantation overstory with the palmetto/gallberry brush understory commonly referred to as southern rough. Live canopy fuel moistures in pines and brush are below average and will support active crown fire when critical fire weather and above fuel dryness is present. Current fuel dryness as represented by KBDI and ERC G is above normal.

KBDI is 586 or 85th percentile and ERC G is 32 or 75th percentile.

Calculated 1 hour fine dead fuel moisture: 7% 10 hour fuel moisture 9% 100 hour fuel moisture: 16%

WEATHER SUMMARY: 20% chance for late afternoon thunderstorms.

WIND (20 FT): SW 6-8 gust 20 mph.
 MAX TEMPERATURES: 95 MIN RH: 40%
 LAL: 1 CHANCE OF RAIN: 20 MAX DISPERSION: 60
 MIXING HEIGHT: 5000 TRANSPORT WINDS: W 15 mph

Fire Environment Conditions present for large fire growth day on May 5th (run that threatened St. George)

Fuel dryness and fire weather combined to produce significant fire growth of 18,000 acres with an initial run that was 9 miles in length. This growth initiated in swamp brush fuels east of Soldier Camp and burned out of the refuge into high risk pine plantation fuels. Fuel dryness was extremely dry with KBDI over the 97th percentile at 720. ERC was at the 85th percentile at 37. Wind was the major weather driver of this fire growth. Windspeeds at Jacksonville Airport were sustained from the west at 28 mph with gusts to 40 mph. Max temperature was 75. Minimum RH was 30%. Burning index G was over the 97th percentile at 49. Average rate of spread was estimated at just over 1 mph. Active crown fire produced spotting out to 1 mile.

Specific: All Branches: Surface fuels will continue to dry out and become available to burn. Piles and muck fuels will continue to hold heat and smolder. Needle cast in previously burned areas will re-burn where ignitions occur. Today's combination of fuel dryness and fire weather will produce surface fires that are moderately resistant to control when in the high risk pine plantation fuels. Peak burning conditions are occurring late in the day between 1600 to 1800 hours. .

Fuel Type	Rates of Spread	Flame Length	Max Spot Distance	Probability of Ignition	Torching / Crowning Potential / Flame Lengths
20' winds @ 6-8					
Southern Rough(pine w/palmetto/gallberry)	10-15 ch/hr.	4-6 feet	50 feet	50%	Torching in brush canopy
Timber Litter (pine litter reburn)	1-2 ch/hr.	1 feet	0 feet	50%	No torching
Brush (Swamp SH3)	1-2 ch/hr.	2-3 feet	50 feet	50%	Torching in brush canopy

AIR OPERATIONS: 20% probability for thunderstorm activity in fire area

FIRE BEHAVIOR SAFETY:

Taking weather observations during the afternoon will allow firefighters to make adjustments to fire behavior and fire weather forecasts if needed. For example...if temperatures are higher than forecast and RH is lower than forecast then fine dead fuel moisture will be lower than forecast. Lower fine dead fuel moisture will produce higher rate of spread and flame lengths than forecast and ultimately increase the fires resistance to control.

Reference: 1 chain = 66 feet, 20 chains = .25 mile, 40 chains = .50 mile, 60 chains = .75 mile, 80 chains = 1 Mile

IA Protocol

- Determine LAT/LONG.
- Notify OSC and/or OPBD.
- OSC/OPBD will notify Unified IC's for approval to assist with ground or aviation resources.

In Georgia:

Southern Response Dispatch (229) 386-3846

If no contact-Buck Kline (912) 678-2694

In Florida-

Lake City (Baker, Columbia, and Hamilton Counties):
(386) 243-6243

Jacksonville (Nassau County): (904) 266-8351

If no contact-Rick Dolan (352) 353-5101

Osceola National Forest- Any starts south of Florida State Highway 2 under USFS jurisdiction are the responsibility of the Osceola NF. Contact Tallahassee Dispatch at 850-523-8600 or Forest Duty Officer Drew Page at 850-523-8600. Tractor plow units should not engage (unless life or property is threatened) before contact with Osceola NF (Chris Lydick at 850-264-3209 or Scott Hussey at 352-215-5722).

For OKR-

Brantley Boatright Dispatch (912) 496-7366 x 230
or (912) 276-0023

Division/Group Assignment List (ICS 204 WF)

1. Incident Name:			3.			
WEST MIMS			Branch:		Division/Group:	
2. Operational Period: DAY SHIFT 0730-1930			I		B	
Date/Time From: 05/29/2017 0730 MON		Date/Time To: 05/29/2017 1930 MON				
4. Operations Personnel						
PLANNING OPERATIONS CHIEF		TRENT INGRAM		OPERATIONS CHIEF		RICK DOLAN BUCK KLINE
BRANCH DIRECTOR		LANCE DELGADO		DIVISION/GROUP SUPERVISOR		JERRY VAN DYNE KEITH FIELDS (T)
SAFETY		LARRY GRUBBS ROB THORP (T); LUCAS MINTON (T)		AIR TACTICAL GROUP SUPERVISOR		MARK NUNEZ KEN MCLAUGHLIN
5. Resources Assigned this Period						
Strike Team / Task Force / Resource Designator		LWD	Leader	Number Persons	Drop Off PT./Time	Pick Up PT./Time
STEN O-605		05/29	COURTNEY WENZEL	1	ICP/0730	ICP/1930
ENG6 NM-SNF - JEMEZ RD - 631 E-763		05/29	KARL KEEMAN	6	ICP/0730	ICP/1930
ENG6 AR-OZF - PH - E-641 E-76		05/29	MICHAEL W KOCH	3	ICP/0730	ICP/1930
ENG6 UT-FIF - ENG 612 E-843		06/02	JARAD TEEPLES	8	ICP/0730	ICP/1930
WTS1 WILDLANDS FIRE SERVICE E-132		05/30	DAVID SWEENEY	1	ICP/0730	ICP/1930
EMPF O-754		06/09	COBY SAUREY	1	ICP/0730	ICP/1930
SOF2 O-252		05/31	CHRIS CHURCH	1	ICP/0730	ICP/1930
6. Control Operations/Work Assignments:						
Task						
<ul style="list-style-type: none"> • Patrol and mop up fuels appropriate to fuel type and anticipated weather and fire behavior. 						
8. Division/Group Communication Summary						
Function	Channel	RX Frequency N/W	RX Tone/NAC	TX Frequency N/W	TX Tone/NAC	Mode
AIR TO GROUND	ZONE 2 / CH4	169.2000N	NONE	169.2000N	NONE	A
COMMAND	ZONE 2 / CH8	159.2700N	156.7	151.1000N	123.0	A
TACTICAL	ZONE 2 / CH13	159.4125N	NONE	159.4125N	NONE	A
AIR TO GROUND	ZONE 2 / CH14	166.6750N	NONE	166.6750N	NONE	A
AIR TO GROUND	ZONE 2 / CH15	169.1500N	NONE	169.1500N	NONE	A
AIR GUARD	ZONE 2 / CH16	168.6250N	NONE	168.6250N	110.9	A
9. Prepared By (Resource Unit Leader)			Approved By (Planning Section Chief)		Date	Time
SHAUN STEWART, RESL			JOE BISHOP, PSC2 (T)		05/28/2017	1800

Division/Group Assignment List (ICS 204 WF)

1. Incident Name:			3.			
WEST MIMS			I	B		
2. Operational Period: DAY SHIFT 0730-1930						
Date/Time From: 05/29/2017 0730	MON	Date/Time To: 05/29/2017 1930				
4. Operations Personnel						
PLANNING OPERATIONS CHIEF	TRENT INGRAM		OPERATIONS CHIEF	RICK DOLAN BUCK KLINE		
BRANCH DIRECTOR	LANCE DELGADO		DIVISION/GROUP SUPERVISOR	JERRY VAN DYNE KEITH FIELDS (T)		
SAFETY	LARRY GRUBBS ROB THORP (T); LUCAS MINTON (T)		AIR TACTICAL GROUP SUPERVISOR	MARK NUNEZ KEN MCLAUGHLIN		
6. Control Operations/Work Assignments:						
<ul style="list-style-type: none"> • Respond to any new starts within the division. Purpose <ul style="list-style-type: none"> • Keep fire north of GA 94/FL 2. End State <ul style="list-style-type: none"> • Fire is contained by adequate control line to reduce threat to escape; minimizing damage to private timberlands, private lands, and other resource values at risk. 						
7. Special Instructions:						
<p>Ensure LCES is in place before operations begin and stay hydrated. Drive defensively and with lights on at all times. Identify escape routes.</p> <p>Use caution when working around logging operations.</p> <p>For IA protocol see page 7</p> <p>Medical Emergency Channel: Command ETA for Ambulance to Scene: Air: 20 – 30 mins Ground: 10 - 15 mins Paved roads only. IWI – IC or approved person will use Channel 16 (Air Guard) for contact with air ambulance Air Ambulance landing zone to be determined by IWI – IC Utilize engines to provide dust abatement, as needed, prior to air ambulance landing</p>						
8. Division/Group Communication Summary						
Function	Channel	RX Frequency N/W	RX Tone/NAC	TX Frequency N/W	TX Tone/NAC	Mode
AIR TO GROUND	ZONE 2 / CH4	169.2000N	NONE	169.2000N	NONE	A
COMMAND	ZONE 2 / CH8	159.2700N	156.7	151.1000N	123.0	A
TACTICAL	ZONE 2 / CH13	159.4125N	NONE	159.4125N	NONE	A
AIR TO GROUND	ZONE 2 / CH14	166.6750N	NONE	166.6750N	NONE	A
AIR TO GROUND	ZONE 2 / CH15	169.1500N	NONE	169.1500N	NONE	A
AIR GUARD	ZONE 2 / CH16	168.6250N	NONE	168.6250N	110.9	A
9. Prepared By (Resource Unit Leader)		Approved By (Planning Section Chief)		Date	Time	
SHAUN STEWART, RESL		JOE BISHOP, PSC2 (T)		05/28/2017	1800	

Division/Group Assignment List (ICS 204 WF)

1. Incident Name:			3.			
WEST MIMS			Branch:		Division/Group:	
2. Operational Period: DAY SHIFT 0730-1930			I		C	
Date/Time From: 05/29/2017 0730 MON		Date/Time To: 05/29/2017 1930 MON				
4. Operations Personnel						
PLANNING OPERATIONS CHIEF		TRENT INGRAM		OPERATIONS CHIEF		RICK DOLAN BUCK KLINE
BRANCH DIRECTOR		LANCE DELGADO		DIVISION/GROUP SUPERVISOR		CHRIS ROBERTS
SAFETY		LARRY GRUBBS ROB THORP (T); LUCAS MINTON (T)		AIR TACTICAL GROUP SUPERVISOR		MARK NUNEZ KEN MCLAUGHLIN
5. Resources Assigned this Period						
Strike Team / Task Force / Resource Designator		LWD	Leader	Number Persons	Drop Off PT./Time	Pick Up PT./Time
HC2IA PATRICK ENVIRONMENTAL C-11		05/29	AUSTIN HERGERT	19	ICP/0730	ICP/1930
TFLD O-788		06/11	NATHAN ALLEN	1	ICP/0730	ICP/1930
TFLD O-597		05/29	CHAD KIDD	1	ICP/0730	ICP/1930
TFLD (T) O-701		05/30	TRAVIS CARSON	1	ICP/0730	ICP/1930
ENG4 NC-NCS - PP-1434 - D3 E-542		06/06	MATT GARNER	2	ICP/0730	ICP/1930
ENG6 WV-MOF 641 E-870		06/02	JARED STAGGS	3	ICP/0730	ICP/1930
ENG6 AL-ALF SHOAL CREEK 651 E-78		06/06	SCOTT LAYFIELD	3	ICP/0730	ICP/1930
STEQ O-717		06/01	MYRON WILLIAMS	1	ICP/0730	ICP/1930
TPL4 GFC 3254 E-876		06/01	MICHAEL YOKE JR	1	ICP/0730	ICP/1930
TPL4 GFC 3331 E-877		06/01	DAVID THOMPkins	1	ICP/0730	ICP/1930
TPL5 GFC 3219 E-878		06/01	PHIL DAVIS	1	ICP/0730	ICP/1930
EMPF E-352.2		06/13	COLIN STENHOUSE	1	ICP/0730	ICP/1930
SOF2 O-541		06/11	LOUIE CASAUS	1	ICP/0730	ICP/1930
6. Control Operations/Work Assignments:						
8. Division/Group Communication Summary						
Function	Channel	RX Frequency N/W	RX Tone/NAC	TX Frequency N/W	TX Tone/NAC	Mode
AIR TO GROUND	ZONE 2 / CH4	169.2000N	NONE	169.2000N	NONE	A
COMMAND	ZONE 2 / CH8	159.2700N	156.7	151.1000N	123.0	A
TACTICAL	ZONE 2 / CH9	159.2850N	NONE	159.2850N	156.7	A
AIR TO GROUND	ZONE 2 / CH14	166.6750N	NONE	166.6750N	NONE	A
AIR TO GROUND	ZONE 2 / CH15	169.1500N	NONE	169.1500N	NONE	A
AIR GUARD	ZONE 2 / CH16	168.6250N	NONE	168.6250N	110.9	A
9. Prepared By (Resource Unit Leader)			Approved By (Planning Section Chief)		Date	Time
SHAUN STEWART, RESL			JOE BISHOP, PSC2 (T)		05/28/2017	1800

Division/Group Assignment List (ICS 204 WF)

1. Incident Name:			3.			
WEST MIMS			Branch:		Division/Group:	
2. Operational Period: DAY SHIFT 0730-1930			I		C	
Date/Time From: 05/29/2017 0730 MON		Date/Time To: 05/29/2017 1930 MON				
4. Operations Personnel						
PLANNING OPERATIONS CHIEF		TRENT INGRAM		OPERATIONS CHIEF		RICK DOLAN BUCK KLINE
BRANCH DIRECTOR		LANCE DELGADO		DIVISION/GROUP SUPERVISOR		CHRIS ROBERTS
SAFETY		LARRY GRUBBS ROB THORP (T); LUCAS MINTON (T)		AIR TACTICAL GROUP SUPERVISOR		MARK NUNEZ KEN MCLAUGHLIN
6. Control Operations/Work Assignments:						
Task						
<ul style="list-style-type: none"> • Patrol and mop up fuels appropriate to fuel type and anticipated weather and fire behavior. • Respond to any new starts within the division. • Create or improve fireline around logging debris in coordination with logging operators. 						
Purpose						
<ul style="list-style-type: none"> • Keep fire east of swamp edge fire break. 						
End State						
<ul style="list-style-type: none"> • Fire is contained by adequate control line to reduce threat to escape; minimizing damage to private timberlands, private lands, and other resource values at risk. 						
7. Special Instructions:						
<p>Ensure LCES is in place before operations begin and stay hydrated. Drive defensively and with lights on at all times. Identify escape routes. Logging operations are continuing. Stay clear of cutting areas. Please be mindful of logging operations that will be ongoing. Ensure that all personnel stay clear of felling operations. Pay attention for potential reburn in logging area. Work with Gilyard Logging foreman on any suppression actions within the logging area.</p> <p>Use caution when working around logging operations.</p> <p><u>For IA protocol see page 7</u></p> <p>Additional Resources: Superior Pine Tractor Plow D6; SP-83, SP-85, SP-87 Medical Emergency Channel: Command ETA for Ambulance to Scene: Air: 20 – 30 mins Ground: 10 - 15 mins Paved roads only. IWI – IC or approved person will use Channel 16 (Air Guard) for contact with air ambulance Air Ambulance landing zone to be determined by IWI – IC Utilize engines to provide dust abatement, as needed, prior to air ambulance landing</p>						
8. Division/Group Communication Summary						
Function	Channel	RX Frequency N/W	RX Tone/NAC	TX Frequency N/W	TX Tone/NAC	Mode
AIR TO GROUND	ZONE 2 / CH4	169.2000N	NONE	169.2000N	NONE	A
COMMAND	ZONE 2 / CH8	159.2700N	156.7	151.1000N	123.0	A
TACTICAL	ZONE 2 / CH9	159.2850N	NONE	159.2850N	156.7	A
AIR TO GROUND	ZONE 2 / CH14	166.6750N	NONE	166.6750N	NONE	A
AIR TO GROUND	ZONE 2 / CH15	169.1500N	NONE	169.1500N	NONE	A
AIR GUARD	ZONE 2 / CH16	168.6250N	NONE	168.6250N	110.9	A
9. Prepared By (Resource Unit Leader)			Approved By (Planning Section Chief)		Date	Time
SHAUN STEWART, RESL			JOE BISHOP, PSC2 (T)		05/28/2017	1800

Division/Group Assignment List (ICS 204 WF)

1. Incident Name:			3.			
WEST MIMS			I		D	
2. Operational Period: DAY SHIFT 0730-1930						
Date/Time From: 05/29/2017 0730 MON		Date/Time To: 05/29/2017 1930 MON				
4. Operations Personnel						
PLANNING OPERATIONS CHIEF		TRENT INGRAM		OPERATIONS CHIEF		RICK DOLAN BUCK KLINE
BRANCH DIRECTOR		LANCE DELGADO		DIVISION/GROUP SUPERVISOR		WALTER BOWERS
SAFETY		LARRY GRUBBS ROB THORP (T); LUCAS MINTON (T)		AIR TACTICAL GROUP SUPERVISOR		MARK NUNEZ, KEN MCLAUGHLIN
5. Resources Assigned this Period						
Strike Team / Task Force / Resource Designator		LWD	Leader	Number Persons	Drop Off PT./Time	Pick Up PT./Time
TFLD O-792		06/10	TOM ROACH	1	ICP/0730	ICP/1930
HEQB O-662		05/31	WILLIAM BOJORQUES	1	ICP/0730	ICP/1930
DOZ2 OK-OKS ECU #2178 E-503		06/08	AARON SUMPTER	1	ICP/0730	ICP/1930
ENG6 AR-OUF-PCS #691 E-838		05/30	LARRY SHORES	3	ICP/0730	ICP/1930
ENG6 WY-RSD 1602 E-849		05/31	RICHARD HOWE	3	ICP/0730	ICP/1930
WTS2 - STRICKLANDS E-265		05/28	LUCIOUS CORNITT	1	ICP/0730	ICP/1930
TFLD O-649		05/29	RANDY OKON	1	ICP/0730	ICP/1930
TFLD(T) O-730		06/07	JOEY SILVA	1	ICP/0730	ICP/1930
COLQUITT SFSP E-118		06/05	CHAD PRITCHETT	1	ICP/0730	ICP/1930
TFLD O-593		05/29	BRYAN ROSENOW	1	ICP/0730	ICP/1930
DOZ3 KY-KYS 311 - 650J E-510		06/09	JERRY BROWN	2	ICP/0730	ICP/1930
DOZ3 KY-KYS 312 - 650J E-511		06/09	CHRIS ADAMS	2	ICP/0730	ICP/1930
FOBS O-689		05/31	LEW BECKER	1	ICP/0730	ICP/1930
FOBS (T) O-695		05/31	BRADLEY SCHUETTE	1	ICP/0730	ICP/1930
8. Division/Group Communication Summary						
Function	Channel	RX Frequency N/W	RX Tone/NAC	TX Frequency N/W	TX Tone/NAC	Mode
COMMAND	ZONE 2 / CH2	159.1200N	NONE	151.3700N	100.0	A
AIR TO GROUND	ZONE 2 / CH4	169.2000N	NONE	169.2000N	NONE	A
TACTICAL	ZONE 2 / CH13	159.4125N	NONE	159.4125N	NONE	A
AIR TO GROUND	ZONE 2 / CH14	166.6750N	NONE	166.6750N	NONE	A
AIR TO GROUND	ZONE 2 / CH15	169.1500N	NONE	169.1500N	NONE	A
AIR GUARD	ZONE 2 / CH16	168.6250N	NONE	168.6250N	110.9	A
9. Prepared By (Resource Unit Leader)			Approved By (Planning Section Chief)		Date	Time
SHAUN STEWART, RESL			JOE BISHOP, PSC2 (T)		05/28/2017	1800

Division/Group Assignment List (ICS 204 WF)

1. Incident Name:			3.			
WEST MIMS			Branch:		Division/Group:	
2. Operational Period: DAY SHIFT 0730-1930			I		D	
Date/Time From: 05/29/2017 0730	MON	Date/Time To: 05/29/2017 1930	MON			
4. Operations Personnel						
PLANNING OPERATIONS CHIEF		TRENT INGRAM		OPERATIONS CHIEF		
				RICK DOLAN BUCK KLINE		
BRANCH DIRECTOR		LANCE DELGADO		DIVISION/GROUP SUPERVISOR		
				WALTER BOWERS		
SAFETY		LARRY GRUBBS ROB THORP (T); LUCAS MINTON (T)		AIR TACTICAL GROUP SUPERVISOR		
				MARK NUNEZ, KEN MCLAUGHLIN		
5. Resources Assigned this Period						
Strike Team / Task Force / Resource Designator		LWD	Leader	Number Persons	Drop Off PT./Time	Pick Up PT./Time
EMPF E-342.2		06/01	ROD SCHMIDT	1	ICP/0730	ICP/1930
SOF2 O-541		06/11	LOUIE CASAUS	1	ICP/0730	ICP/1930
6. Control Operations/Work Assignments:						
Task						
<ul style="list-style-type: none"> Patrol and mop up fuels appropriate to fuel type and anticipated weather and fire behavior. Respond to any new starts within the division. Monitor fire activity and location in the vicinity of Billies Island. 						
Purpose						
<ul style="list-style-type: none"> Keep fire south of the Suwannee Canal. 						
End State						
<ul style="list-style-type: none"> Fire activity north and west of Billy's Island has been detected and appropriate action has been initiated. Fire is contained by adequate control line to reduce threat to escape; minimizing damage to private timberlands, private lands, and other resource values at risk. 						
7. Special Instructions:						
Ensure LCES is in place before operations begin and stay hydrated. Drive defensively and with lights on at all times. Identify escape routes.						
Ensure all firefighters receive a safety briefing from Resource personnel and don PFDs before boarding the vessel.						
All personnel must receive a briefing and don all PPE, including a PFD, prior to boarding a water vessel.						
8. Division/Group Communication Summary						
Function	Channel	RX Frequency N/W	RX Tone/NAC	TX Frequency N/W	TX Tone/NAC	Mode
COMMAND	ZONE 2 / CH2	159.1200N	NONE	151.3700N	100.0	A
AIR TO GROUND	ZONE 2 / CH4	169.2000N	NONE	169.2000N	NONE	A
TACTICAL	ZONE 2 / CH13	159.4125N	NONE	159.4125N	NONE	A
AIR TO GROUND	ZONE 2 / CH14	166.6750N	NONE	166.6750N	NONE	A
AIR TO GROUND	ZONE 2 / CH15	169.1500N	NONE	169.1500N	NONE	A
AIR GUARD	ZONE 2 / CH16	168.6250N	NONE	168.6250N	110.9	A
9. Prepared By (Resource Unit Leader)			Approved By (Planning Section Chief)		Date	Time
SHAUN STEWART, RESL			JOE BISHOP, PSC2 (T)		05/28/2017	1800

Division/Group Assignment List (ICS 204 WF)

1. Incident Name:			3.			
WEST MIMS			I	D		
2. Operational Period: DAY SHIFT 0730-1930						
Date/Time From:	MON	Date/Time To:	MON			
05/29/2017 0730		05/29/2017 1930				
4. Operations Personnel						
PLANNING OPERATIONS CHIEF	TRENT INGRAM		OPERATIONS CHIEF	RICK DOLAN BUCK KLINE		
BRANCH DIRECTOR	LANCE DELGADO		DIVISION/GROUP SUPERVISOR	WALTER BOWERS		
SAFETY	LARRY GRUBBS ROB THORP (T); LUCAS MINTON (T)		AIR TACTICAL GROUP SUPERVISOR	MARK NUNEZ, KEN MCLAUGHLIN		
7. Special Instructions:						
<p>For IA protocol see page 7</p> <p>Medical Emergency Channel: Command ETA for Ambulance to Scene: Air: 20 – 30 mins Ground: 10 - 15 mins Paved roads only. IWI – IC or approved person will use Channel 16 (Air Guard) for contact with air ambulance Air Ambulance landing zone to be determined by IWI – IC Utilize engines to provide dust abatement, as needed, prior to air ambulance landing</p>						
8. Division/Group Communication Summary						
Function	Channel	RX Frequency N/W	RX Tone/NAC	TX Frequency N/W	TX Tone/NAC	Mode
COMMAND	ZONE 2 / CH2	159.1200N	NONE	151.3700N	100.0	A
AIR TO GROUND	ZONE 2 / CH4	169.2000N	NONE	169.2000N	NONE	A
TACTICAL	ZONE 2 / CH13	159.4125N	NONE	159.4125N	NONE	A
AIR TO GROUND	ZONE 2 / CH14	166.6750N	NONE	166.6750N	NONE	A
AIR TO GROUND	ZONE 2 / CH15	169.1500N	NONE	169.1500N	NONE	A
AIR GUARD	ZONE 2 / CH16	168.6250N	NONE	168.6250N	110.9	A
9. Prepared By (Resource Unit Leader)			Approved By (Planning Section Chief)		Date	Time
SHAUN STEWART, RESL			JOE BISHOP, PSC2 (T)		05/28/2017	1800

Division/Group Assignment List (ICS 204 WF)

1. Incident Name:			3.			
WEST MIMS			Branch:		Division/Group:	
2. Operational Period: DAY SHIFT 0730-1930			I		F	
Date/Time From: 05/29/2017 0730 MON		Date/Time To: 05/29/2017 1930 MON				
4. Operations Personnel						
PLANNING OPERATIONS CHIEF		TRENT INGRAM		OPERATIONS CHIEF		RICK DOLAN FRED BOEHM
BRANCH DIRECTOR		LANCE DELGADO		DIVISION/GROUP SUPERVISOR		JASON FORTHOFFER JEFF COBURN (T)
SAFETY		LARRY GRUBBS ROB THORP (T); LUCAS MINTON (T) (T)		AIR TACTICAL GROUP SUPERVISOR		MARK NUNEZ KEN MCLAUGHLIN
5. Resources Assigned this Period						
Strike Team / Task Force / Resource Designator		LWD	Leader	Number Persons	Drop Off PT./Time	Pick Up PT./Time
TFLD O-790		06/11	MATTHEW CASTELLON	1	ICP/0730	ICP/1930
ENG6 BRUSH 143 E-769		05/29	RICARDO RENTERIA	6	ICP/0730	ICP/1930
ENG6 CO-PBS - 603 E-771		05/29	KEVIN EVANS	4	ICP/0730	ICP/1930
HEQB O-642		05/29	HUNTER BELL	1	ICP/0730	ICP/1930
MAST WESTCO E-865		06/05		1	ICP/0730	ICP/1930
MAST MULCHER/MASTICATOR VIN# B0062 E-834		06/05		1	ICP/0730	ICP/1930
MAST ROT RANCH E-74		05/30	MIKE PARRISH	1	ICP/0730	ICP/1930
BHOE ROT RANCH JD 6415 (MOWER) E-73		05/28	DARRELL CLARK	1	ICP/0730	ICP/1930
EMPF O-560		06/02	LIONEL VAN GRUP	1	ICP/0730	ICP/1930
SOF2 O-587		05/29	RON BERTSCH	1	ICP/0730	ICP/1930
8. Division/Group Communication Summary						
Function	Channel	RX Frequency N/W	RX Tone/NAC	TX Frequency N/W	TX Tone/NAC	Mode
COMMAND	ZONE 2 / CH 7	159.2700N	156.7	151.100N	100.0	A
AIR TO GROUND	ZONE 2 / CH 4	169.2000N	NONE	169.2000N	NONE	A
TACTICAL	ZONE 2 / CH 13	159.4125N	NONE	159.4125N	NONE	A
AIR TO GROUND	ZONE 2 / CH 14	166.6750N	NONE	166.6750N	NONE	A
AIR TO GROUND	ZONE 2 / CH 15	169.1500N	NONE	169.1500N	NONE	A
AIR GUARD	ZONE 2 / CH 16	168.6250N	NONE	168.6250N	110.9	A
9. Prepared By (Resource Unit Leader)			Approved By (Planning Section Chief)		Date	Time
SHAUN STEWART, RESL			JOE BISHOP, PSC2 (T)		05/28/2017	1800

Division/Group Assignment List (ICS 204 WF)

1. Incident Name:			3.			
WEST MIMS			Branch:		Division/Group:	
2. Operational Period: DAY SHIFT 0730-1930			I		F	
Date/Time From: 05/29/2017 0730 MON		Date/Time To: 05/29/2017 1930 MON				
4. Operations Personnel						
PLANNING OPERATIONS CHIEF		TRENT INGRAM		OPERATIONS CHIEF		RICK DOLAN FRED BOEHM
BRANCH DIRECTOR		LANCE DELGADO		DIVISION/GROUP SUPERVISOR		JASON FORTHOFFER JEFF COBURN (T)
SAFETY		LARRY GRUBBS ROB THORP (T); LUCAS MINTON (T) (T)		AIR TACTICAL GROUP SUPERVISOR		MARK NUNEZ KEN MCLAUGHLIN
6. Control Operations/Work Assignments:						
Task						
<ul style="list-style-type: none"> • Assist private landowners and coordinate preparation of timberlands adjacent to the division. • Respond to any new starts within the division. • Monitor fire activity and location within the swamp. • Refresh Swamp Edge Break. 						
Purpose						
<ul style="list-style-type: none"> • Keep fire east of Swamp Edge Break. 						
End State						
<ul style="list-style-type: none"> • Fire activity that threatens Swamp Edge Break has been detected and appropriate action has been initiated. • Fire is contained by adequate control line to reduce threat to escape; minimizing damage to private timberlands, private lands, and other resource values at risk. 						
7. Special Instructions:						
Use caution when working around logging operations.						
For IA protocol see page 8						
Medical Emergency Channel: Command ETA for Ambulance to Scene: Air: 20 – 30 mins Ground: 10 - 15 mins Paved roads only. IWI – IC or approved person will use Channel 16 (Air Guard) for contact with air ambulance Air Ambulance landing zone to be determined by IWI – IC Utilize engines to provide dust abatement, as needed, prior to air ambulance landing						
8. Division/Group Communication Summary						
Function	Channel	RX Frequency N/W	RX Tone/NAC	TX Frequency N/W	TX Tone/NAC	Mode
COMMAND	ZONE 2 / CH 7	159.2700N	156.7	151.100N	100.0	A
AIR TO GROUND	ZONE 2 / CH 4	169.2000N	NONE	169.2000N	NONE	A
TACTICAL	ZONE 2 / CH 13	159.4125N	NONE	159.4125N	NONE	A
AIR TO GROUND	ZONE 2 / CH 14	166.6750N	NONE	166.6750N	NONE	A
AIR TO GROUND	ZONE 2 / CH 15	169.1500N	NONE	169.1500N	NONE	A
AIR GUARD	ZONE 2 / CH 16	168.6250N	NONE	168.6250N	110.9	A
9. Prepared By (Resource Unit Leader)			Approved By (Planning Section Chief)		Date	Time
SHAUN STEWART, RESL			JOE BISHOP, PSC2 (T)		05/28/2017	1800

Division/Group Assignment List (ICS 204 WF)

1. Incident Name:			3.				
WEST MIMS			I	Branch:		Division/Group:	
2. Operational Period: DAY SHIFT 0730-1930				I		INITIAL ATTACK WEST	
Date/Time From: 05/29/2017 0730	MON	Date/Time To: 05/29/2017 1930					
4. Operations Personnel							
PLANNING OPERATIONS CHIEF		TRENT INGRAM		OPERATIONS CHIEF		RICK DOLAN BUCK KLINE	
BRANCH DIRECTOR		LANCE DELGADO		DIVISION/GROUP SUPERVISOR		RONALD L CALHOUN	
SAFETY		LARRY GRUBBS CLAY STEPHENS (T)		AIR TACTICAL GROUP SUPERVISOR		MARK NUNEZ KEN MCLAUGHLIN	
5. Resources Assigned this Period							
Strike Team / Task Force / Resource Designator		LWD	Leader	Number Persons	Drop Off PT./Time	Pick Up PT./Time	
STEQ O-565		05/31	AL POTTS	1	ICP/0730	ICP/1930	
TPL4 GFC 3285 E-824		05/30	TERRY HEARD	1	ICP/0730	ICP/1930	
TPL4 GFC 3212 E-825		05/31	BRUCE FREE	1	ICP/0730	ICP/1930	
TPL4 GFC 2230 E-826		05/31	CHRISTOPHER BRANNEN	1	ICP/0730	ICP/1930	
STEQ O-762		06/08	HILTON BENNETT	1	ICP/0730	ICP/1930	
TPL2 GFC 1413 E-981		06/08	SHAWN SPIKES	1	ICP/0730	ICP/1930	
TPL2 GFC 1414 E-982		06/08	JASON BOHANNON	1	ICP/0730	ICP/1930	
TPL3 GFC 1547 E-983		06/08	ORION GIBSON	1	ICP/0730	ICP/1930	
DOZ1 HUDSON 7699 E-788		05/30	CHAD WILEY	2	ICP/0730	ICP/1930	
8. Division/Group Communication Summary							
Function	Channel	RX Frequency N/W	RX Tone/NAC	TX Frequency N/W	TX Tone/NAC	Mode	
COMMAND	ZONE 2 / CH 7	159.2700N	156.7	151.1000N	100.0	A	
COMMAND	ZONE 2 / CH 8	159.2700N	156.7	151.1000N	123.0	A	
TACTICAL	ZONE 2 / CH 11	163.1000N	NONE	163.1000N	NONE	A	
AIR TO GROUND	ZONE 2 / CH 4	169.2000N	NONE	169.2000N	NONE	A	
AIR TO GROUND	ZONE 2 / CH 14	166.6750N	NONE	166.6750N	NONE	A	
AIR TO GROUND	ZONE 2 / CH 15	169.1500N	NONE	169.1500N	NONE	A	
AIR GUARD	ZONE 2 / CH 16	168.6250N	NONE	168.6250N	110.9	A	
9. Prepared By (Resource Unit Leader)			Approved By (Planning Section Chief)		Date	Time	
SHAUN STEWART			JOE BISHOP, PSC2 (T)		05/28/2017	1800	

Division/Group Assignment List (ICS 204 WF)

1. Incident Name:		3.				
WEST MIMS		I	Branch:		Division/Group:	
2. Operational Period: DAY SHIFT 0730-1930			INITIAL ATTACK WEST			
Date/Time From: 05/29/2017 0730	MON	Date/Time To: 05/29/2017 1930	MON			
4. Operations Personnel						
PLANNING OPERATIONS CHIEF		TRENT INGRAM	OPERATIONS CHIEF		RICK DOLAN BUCK KLINE	
BRANCH DIRECTOR		LANCE DELGADO	DIVISION/GROUP SUPERVISOR		RONALD L CALHOUN	
SAFETY		LARRY GRUBBS CLAY STEPHENS (T)	AIR TACTICAL GROUP SUPERVISOR		MARK NUNEZ KEN MCLAUGHLIN	
5. Resources Assigned this Period						
Strike Team / Task Force / Resource Designator	LWD	Leader	Number Persons	Drop Off PT./Time	Pick Up PT./Time	
STEQ O-799	06/10	STEVEN CAMPBELL	1	ICP/0730	ICP/1930	
TRACTOR PLOW - T3 - GFC3186 E-687	06/10	CLARANCE THOMAS	1	ICP/0730	ICP/1930	
TRACTOR PLOW - T2 - GFC3230 E-688	06/10	WILLIAM LANE	1	ICP/0730	ICP/1930	
TRACTOR PLOW - T3 - GFC1536 E-689	06/10	BRIAN HARDEN	1	ICP/0730	ICP/1930	
8. Division/Group Communication Summary						
Function	Channel	RX Frequency N/W	RX Tone/NAC	TX Frequency N/W	TX Tone/NAC	Mode
COMMAND	ZONE 2 / CH 7	159.2700N	156.7	151.1000N	100.0	A
COMMAND	ZONE 2 / CH 8	159.2700N	156.7	151.1000N	123.0	A
TACTICAL	ZONE 2 / CH 11	163.1000N	NONE	163.1000N	NONE	A
AIR TO GROUND	ZONE 2 / CH 4	169.2000N	NONE	169.2000N	NONE	A
AIR TO GROUND	ZONE 2 / CH 14	166.6750N	NONE	166.6750N	NONE	A
AIR TO GROUND	ZONE 2 / CH 15	169.1500N	NONE	169.1500N	NONE	A
AIR GUARD	ZONE 2 / CH 16	168.6250N	NONE	168.6250N	110.9	A
9. Prepared By (Resource Unit Leader)		Approved By (Planning Section Chief)		Date	Time	
SHAUN STEWART		JOE BISHOP, PSC2 (T)		05/28/2017	1800	

Division/Group Assignment List (ICS 204 WF)

1. Incident Name:		3.					
WEST MIMS		I		Branch:		Division/Group:	
2. Operational Period: DAY SHIFT 0730-1930				INITIAL ATTACK WEST			
Date/Time From: 05/29/2017 0730 MON	Date/Time To: 05/29/2017 1930 MON						
4. Operations Personnel							
PLANNING OPERATIONS CHIEF		TRENT INGRAM		OPERATIONS CHIEF		RICK DOLAN BUCK KLINE	
BRANCH DIRECTOR		LANCE DELGADO		DIVISION/GROUP SUPERVISOR		RONALD L CALHOUN	
SAFETY		LARRY GRUBBS CLAY STEPHENS (T)		AIR TACTICAL GROUP SUPERVISOR		MARK NUNEZ KEN MCLAUGHLIN	
6. Control Operations/Work Assignments:							
Task							
<ul style="list-style-type: none"> Respond to any new starts as requested by OKR duty officer. Coordinate initial attack action with assigned aviation and/or ground assets. 							
Purpose							
<ul style="list-style-type: none"> Ensure timely response on any initial attack within OKR jurisdictional boundaries and vicinity. 							
End State							
<ul style="list-style-type: none"> Fire activity has been detected and appropriate action has been initiated. 							
7. Special Instructions:							
<p>Contact Resource Advisors for any cultural or archeological needs, as well as, RCW concerns. Ensure LCES is in place before operations begin and stay hydrated. Drive defensively and with lights on at all times. Communications: Use the tactical channel for the division you are in. Staging on east side at Refuge office.</p> <p>Use caution when working around logging operations.</p> <p>Medical Emergency Channel: Command ETA for Ambulance to Scene: Air: 20 – 30 mins Ground: 10 - 15 mins Paved roads only. IWI – IC or approved person will use Channel 16 (Air Guard) for contact with air ambulance Air Ambulance landing zone to be determined by IWI – IC Utilize engines to provide dust abatement, as needed, prior to air ambulance landing</p> <p>For IA protocol see page 7</p>							
8. Division/Group Communication Summary							
Function	Channel	RX Frequency N/W	RX Tone/NAC	TX Frequency N/W	TX Tone/NAC	Mode	
COMMAND	ZONE 2 / CH 7	159.2700N	156.7	151.1000N	100.0	A	
COMMAND	ZONE 2 / CH 8	159.2700N	156.7	151.1000N	123.0	A	
TACTICAL	ZONE 2 / CH 11	163.1000N	NONE	163.1000N	NONE	A	
AIR TO GROUND	ZONE 2 / CH 4	169.2000N	NONE	169.2000N	NONE	A	
AIR TO GROUND	ZONE 2 / CH 14	166.6750N	NONE	166.6750N	NONE	A	
AIR TO GROUND	ZONE 2 / CH 15	169.1500N	NONE	169.1500N	NONE	A	
AIR GUARD	ZONE 2 / CH 16	168.6250N	NONE	168.6250N	110.9	A	
9. Prepared By (Resource Unit Leader)			Approved By (Planning Section Chief)		Date	Time	
SHAUN STEWART			JOE BISHOP, PSC2 (T)		05/28/2017	1800	

Division/Group Assignment List (ICS 204 WF)

1. Incident Name:			3.			
WEST MIMS			III		Division/Group:	
2. Operational Period: DAY SHIFT 0730-1930					INITIAL ATTACK EAST	
Date/Time From: 05/29/2017 0730 MON		Date/Time To: 05/29/2017 1930 MON				
4. Operations Personnel						
PLANNING OPERATIONS CHIEF		TRENT INGRAM		OPERATIONS CHIEF		
BRANCH DIRECTOR		MARC CRAIN CHRIS LUNDGREN (T)		DIVISION/GROUP SUPERVISOR		
SAFETY		LARRY CONNELL		AIR TACTICAL GROUP SUPERVISOR		
				RICK DOLAN FRED BOEHM, BRYCE THOMAS (T)		
				ROCKY CHESSER ARTURO GASDIK (T)		
				MARK NUNEZ KEN MCLAUGHLIN		
5. Resources Assigned this Period						
Strike Team / Task Force / Resource Designator		LWD	Leader	Number Persons	Drop Off PT./Time	Pick Up PT./Time
TFLD O-205		06/06	ADAM MCCULLOUGH	1	EAST CAMP/0730	EAST CAMP/1930
TFLD(T) E-35.3		06/06	RANDALL MCLAIN	1	EAST CAMP/0730	EAST CAMP/1930
ENG6 NC-POR PLE1 E-2		06/03	AIMEE MIDGETT	2	EAST CAMP/0730	EAST CAMP/1930
ENG6 OK-4261 E-36		05/29	ANDY HEISEY	2	EAST CAMP/0730	EAST CAMP/1930
TPL2 SC-CRR D-223 E-240			UNSTAFFED	1	EAST CAMP/0730	EAST CAMP/1930
TPL2 NC-POR 750J PX3 E-131		06/07	KENNY POWELL	1	EAST CAMP/0730	EAST CAMP/1930
TPL2 OKE 56 - TPL E-35		06/06	RANDALL MCLAIN	1	EAST CAMP/0730	EAST CAMP/1930
TPL4 SMR #4441 E-508		05/28	BERT RAGER	1	EAST CAMP/0730	EAST CAMP/1930
TPL2 GA-SAR D922 E-288		05/30	CHARLES JOHNSON	1	EAST CAMP/0730	EAST CAMP/1930
TPL3 GFC1208 E-670		06/08	RANDALL G SPELL JR		EAST CAMP/0730	EAST CAMP/1930
TPL2 FC2331 E-979		06/08	GABRIEL CLUFF		EAST CAMP/0730	EAST CAMP/1930
TPL3 GFC1550 E-980		06/08	KYLE CRIBB		EAST CAMP/0730	EAST CAMP/1930
DOZ2 OKE-54 E-34		05/30	FED PRIVETT	1	EAST CAMP/0730	EAST CAMP/1930
ICT4		05/30	CORY BRYANT	1	EAST CAMP/0730	EAST CAMP/1930
8. Division/Group Communication Summary						
Function	Channel	RX Frequency N/W	RX Tone/NAC	TX Frequency N/W	TX Tone/NAC	Mode
COMMAND	ZONE 2 / CH 7	159.2700N	156.7	151.1000N	100.0	A
COMMAND	ZONE 2 / CH 8	159.2700N	156.7	151.1000N	123.0	A
AIR TO GROUND	ZONE 2 / CH 4	169.2000N	NONE	169.2000N	NONE	A
TACTICAL	ZONE 2 / CH 12	159.4425N	NONE	159.4425N	NONE	A
AIR TO GROUND	ZONE 2 / CH 14	166.6750N	NONE	166.6750N	NONE	A
AIR TO GROUND	ZONE 2 / CH 15	169.1500N	NONE	169.1500N	NONE	A
AIR GUARD	ZONE 2 / CH 16	168.6250N	NONE	168.6250N	110.9	A
9. Prepared By (Resource Unit Leader)			Approved By (Planning Section Chief)		Date	Time
SHAUN STEWART			JOE BISHOP, PSC2 (T)		05/28/2017	1800

Division/Group Assignment List (ICS 204 WF)

1. Incident Name:		3.				
WEST MIMS		III		Division/Group: INITIAL ATTACK EAST		
2. Operational Period: DAY SHIFT 0730-1930						
Date/Time From: 05/29/2017 0730 MON	Date/Time To: 05/29/2017 1930 MON					
4. Operations Personnel						
PLANNING OPERATIONS CHIEF	TRENT INGRAM	OPERATIONS CHIEF	RICK DOLAN FRED BOEHM, BRYCE THOMAS (T)			
BRANCH DIRECTOR	MARC CRAIN CHRIS LUNDGREN (T)	DIVISION/GROUP SUPERVISOR	ROCKY CHESSER ARTURO GASDIK (T)			
SAFETY	LARRY CONNELL	AIR TACTICAL GROUP SUPERVISOR	MARK NUNEZ KEN MCLAUGHLIN			
6. Control Operations/Work Assignments:						
Task						
<ul style="list-style-type: none"> Respond to any new starts as requested by OKR duty officer. Coordinate initial attack action with assigned aviation and/or ground assets. 						
Purpose						
<ul style="list-style-type: none"> Ensure timely response on any initial attack within OKR jurisdictional boundaries and vicinity. 						
End State						
<ul style="list-style-type: none"> Fire activity has been detected and appropriate action has been initiated. 						
7. Special Instructions:						
<p>Contact Resource Advisors for any cultural or archeological needs, as well as, RCW concerns. Ensure LCES is in place before operations begin and stay hydrated. Drive defensively and with lights on at all times. Communications: Use the tactical channel for the division you are in. Staging on east side at Refuge office.</p> <p>Use caution when working around logging operations.</p> <p>Medical Emergency Channel: Command ETA for Ambulance to Scene: Air: 20 – 30 mins Ground: 10 - 15 mins Paved roads only. IWI – IC or approved person will use Channel 16 (Air Guard) for contact with air ambulance Air Ambulance landing zone to be determined by IWI – IC Utilize engines to provide dust abatement, as needed, prior to air ambulance landing</p> <p>For IA protocol see page 7</p>						
8. Division/Group Communication Summary						
Function	Channel	RX Frequency N/W	RX Tone/NAC	TX Frequency N/W	TX Tone/NAC	Mode
COMMAND	ZONE 2 / CH 7	159.2700N	156.7	151.1000N	100.0	A
COMMAND	ZONE 2 / CH 8	159.2700N	156.7	151.1000N	123.0	A
AIR TO GROUND	ZONE 2 / CH 4	169.2000N	NONE	169.2000N	NONE	A
TACTICAL	ZONE 2 / CH 12	159.4425N	NONE	159.4425N	NONE	A
AIR TO GROUND	ZONE 2 / CH 14	166.6750N	NONE	166.6750N	NONE	A
AIR TO GROUND	ZONE 2 / CH 15	169.1500N	NONE	169.1500N	NONE	A
AIR GUARD	ZONE 2 / CH 16	168.6250N	NONE	168.6250N	110.9	A
9. Prepared By (Resource Unit Leader)		Approved By (Planning Section Chief)			Date	Time
SHAUN STEWART		JOE BISHOP, PSC2 (T)			05/28/2017	1800

Division/Group Assignment List (ICS 204 WF)

1. Incident Name:			3.			
WEST MIMS			III		M/N	
2. Operational Period: DAY SHIFT 0730-1930						
Date/Time From: 05/29/2017 0730 MON		Date/Time To: 05/29/2017 1930 MON				
4. Operations Personnel						
PLANNING OPERATIONS CHIEF		TRENT INGRAM		OPERATIONS CHIEF		RICK DOLAN, FRED BOEHM BRYCE THOMAS (T)
BRANCH DIRECTOR		MARC CRAIN CHRIS LUNDGREN (T)		DIVISION/GROUP SUPERVISOR		BUTCH GALBRAITH JR CHRIS RANKIN (T)
SAFETY		LARRY CONNELL		AIR TACTICAL GROUP SUPERVISOR		MARK NUNEZ, KEN MCLAUGHLIN
5. Resources Assigned this Period						
Strike Team / Task Force / Resource Designator		LWD	Leader	Number Persons	Drop Off PT./Time	Pick Up PT./Time
TFLD O-385		05/30	MARVIN ROYBAL	1	EAST CAMP/0730	EAST CAMP/1930
TFLD(T) O-670		06/01	MIKE BROD	1	EAST CAMP/0730	EAST CAMP/1930
ENG6 AR-OZF - SYL - E-671 E-283		06/09	ROBERT YONILES	3	EAST CAMP/0730	EAST CAMP/1930
ENG6 NAX - BRUSH 7-4 E-848		05/31	MAX BORINO	3	EAST CAMP/0730	EAST CAMP/1930
WTS2 WET 'N RED, LLC - 58592 E-365		06/14	ALLEN WEST	2	EAST CAMP/0730	EAST CAMP/1930
TFLD O-725		06/03	JASON HAYWOOD	1	EAST CAMP/0730	EAST CAMP/1930
TFLD(T) O-643		06/05	JAKE GOEBEL	1	EAST CAMP/0730	EAST CAMP/1930
ENG3 - 335 E-756		05/31	WILLIAM MARCKS		EAST CAMP/0730	EAST CAMP/1930
ENG6 TRINIDAD FIRE 2930 E-774		05/29	MIGUEL ORTIZ	3	EAST CAMP/0730	EAST CAMP/1930
ENG6 WY-MBF - 694 E-776		06/03	JOSH MCGEE	3	EAST CAMP/0730	EAST CAMP/1930
WTT2 AZ-COF 4-74 E-600		06/02	JASON KOLB	2	EAST CAMP/0730	EAST CAMP/1930
STEQ O-761		06/08	DERRICK W DUNCAN	1	EAST CAMP/0730	EAST CAMP/1930
8. Division/Group Communication Summary						
Function	Channel	RX Frequency N/W	RX Tone/NAC	TX Frequency N/W	TX Tone/NAC	Mode
COMMAND	ZONE 2 / CH 3	159.1200N	NONE	151.3700N	82.5	A
AIR TO GROUND	ZONE 2 / CH 4	169.2000N	NONE	169.2000N	NONE	A
TACTICAL	ZONE 2 / CH 9	159.2850N	NONE	159.2850N	156.7	A
AIR TO GROUND	ZONE 2 / CH 14	166.6750N	NONE	166.6750N	NONE	A
AIR TO GROUND	ZONE 2 / CH 15	169.1500N	NONE	169.1500N	NONE	A
AIR GUARD	ZONE 2 / CH 16	168.6250N	NONE	168.6250N	110.9	A
9. Prepared By (Resource Unit Leader)			Approved By (Planning Section Chief)		Date	Time
SHAUN STEWART			JOE BISHOP, PSC2 (T)		05/28/2017	1800

Division/Group Assignment List (ICS 204 WF)

1. Incident Name:			3.			
WEST MIMS			III		M/N	
2. Operational Period: DAY SHIFT 0730-1930						
Date/Time From: 05/29/2017 0730 MON		Date/Time To: 05/29/2017 1930 MON				
4. Operations Personnel						
PLANNING OPERATIONS CHIEF		TRENT INGRAM		OPERATIONS CHIEF		RICK DOLAN, FRED BOEHM BRYCE THOMAS (T)
BRANCH DIRECTOR		MARC CRAIN CHRIS LUNDGREN (T)		DIVISION/GROUP SUPERVISOR		BUTCH GALBRAITH JR CHRIS RANKIN (T)
SAFETY		LARRY CONNELL		AIR TACTICAL GROUP SUPERVISOR		MARK NUNEZ, KEN MCLAUGHLIN
5. Resources Assigned this Period						
Strike Team / Task Force / Resource Designator		LWD	Leader	Number Persons	Drop Off PT./Time	Pick Up PT./Time
FOBS O-690		06/01	REED HECKLY	1	EAST CAMP/0730	EAST CAMP/1930
FOBS(T) O-408		06/08	ADAM HUMBACH	1	EAST CAMP/0730	EAST CAMP/1930
FOBS (T) O-573		05/27	OLIVER WAHLQUIST	1	EAST CAMP/0730	EAST CAMP/1930
EMPF E-316.2		05/30	STEVE WOLFSTICH	1	EAST CAMP/0730	EAST CAMP/1930
SOF2 O-589		06/03	GALEN YOUNG	1	EAST CAMP/0730	EAST CAMP/1930
6. Control Operations/Work Assignments:						
Task						
<ul style="list-style-type: none"> • Prepare for strategic firing of control lines. • Respond to any new starts within the division. • Patrol and mop up fuels appropriate to fuel type and anticipated weather and fire behavior. 						
Purpose						
<ul style="list-style-type: none"> • Keep fire west of Swamp Edge Break. 						
End State						
<ul style="list-style-type: none"> • Fire is contained by adequate control line to reduce threat to escape; minimizing damage to private timberlands, private lands, and other resource values at risk. 						
7. Special Instructions:						
8. Division/Group Communication Summary						
Function	Channel	RX Frequency N/W	RX Tone/NAC	TX Frequency N/W	TX Tone/NAC	Mode
COMMAND	ZONE 2 / CH 3	159.1200N	NONE	151.3700N	82.5	A
AIR TO GROUND	ZONE 2 / CH 4	169.2000N	NONE	169.2000N	NONE	A
TACTICAL	ZONE 2 / CH 9	159.2850N	NONE	159.2850N	156.7	A
AIR TO GROUND	ZONE 2 / CH 14	166.6750N	NONE	166.6750N	NONE	A
AIR TO GROUND	ZONE 2 / CH 15	169.1500N	NONE	169.1500N	NONE	A
AIR GUARD	ZONE 2 / CH 16	168.6250N	NONE	168.6250N	110.9	A
9. Prepared By (Resource Unit Leader)			Approved By (Planning Section Chief)		Date	Time
SHAUN STEWART			JOE BISHOP, PSC2 (T)		05/28/2017	1800

Division/Group Assignment List (ICS 204 WF)

1. Incident Name:			3.			
WEST MIMS			III		M/N	
2. Operational Period: DAY SHIFT 0730-1930						
Date/Time From: 05/29/2017 0730 MON		Date/Time To: 05/29/2017 1930 MON				
4. Operations Personnel						
PLANNING OPERATIONS CHIEF		TRENT INGRAM		OPERATIONS CHIEF		RICK DOLAN, FRED BOEHM BRYCE THOMAS (T)
BRANCH DIRECTOR		MARC CRAIN CHRIS LUNDGREN (T)		DIVISION/GROUP SUPERVISOR		BUTCH GALBRAITH JR CHRIS RANKIN (T)
SAFETY		LARRY CONNELL		AIR TACTICAL GROUP SUPERVISOR		MARK NUNEZ, KEN MCLAUGHLIN
7. Special Instructions:						
Ensure LCES is in place before operations begin and stay hydrated. Drive defensively and with lights on at all times. Identify escape routes.						
Use caution when working around logging operations.						
For IA protocol see page 7						
Medical Emergency Channel: Command						
ETA for Ambulance to Scene:						
Air: 20 – 30 mins						
Ground: 10 - 15 mins Paved roads only.						
IWI – IC or approved person will use Channel 16 (Air Guard) for contact with air ambulance						
Air Ambulance landing zone to be determined by IWI – IC						
Utilize engines to provide dust abatement, as needed, prior to air ambulance landing						
8. Division/Group Communication Summary						
Function	Channel	RX Frequency N/W	RX Tone/NAC	TX Frequency N/W	TX Tone/NAC	Mode
COMMAND	ZONE 2 / CH 3	159.1200N	NONE	151.3700N	82.5	A
AIR TO GROUND	ZONE 2 / CH 4	169.2000N	NONE	169.2000N	NONE	A
TACTICAL	ZONE 2 / CH 9	159.2850N	NONE	159.2850N	156.7	A
AIR TO GROUND	ZONE 2 / CH 14	166.6750N	NONE	166.6750N	NONE	A
AIR TO GROUND	ZONE 2 / CH 15	169.1500N	NONE	169.1500N	NONE	A
AIR GUARD	ZONE 2 / CH 16	168.6250N	NONE	168.6250N	110.9	A
9. Prepared By (Resource Unit Leader)			Approved By (Planning Section Chief)		Date	Time
SHAUN STEWART			JOE BISHOP, PSC2 (T)		05/28/2017	1800

Division/Group Assignment List (ICS 204 WF)

1. Incident Name:			3.			
WEST MIMS			III		O	
2. Operational Period: DAY SHIFT 0730-1930						
Date/Time From: 05/29/2017 0730 MON		Date/Time To: 05/29/2017 1930 MON				
4. Operations Personnel						
PLANNING OPERATIONS CHIEF		TRENT INGRAM		OPERATIONS CHIEF		RICK DOLAN FRED BOEHM, BRYCE THOMAS (T)
BRANCH DIRECTOR		MARC CRAIN CHRIS LUNDGREN (T)		DIVISION/GROUP SUPERVISOR		SHAWN ALEXANDER MICHAEL GUE (T)
SAFETY		LARRY CONNELL		AIR TACTICAL GROUP SUPERVISOR		MARK NUNEZ, KEN MCLAUGHLIN
5. Resources Assigned this Period						
Strike Team / Task Force / Resource Designator		LWD	Leader	Number Persons	Drop Off PT./Time	Pick Up PT./Time
TFLD O-789		06/10	PAUL RYAN	1	EAST CAMP/0730	EAST CAMP/1930
ENG6 - STH ARK 112 E-773		05/29	MELISSA FRIESS	3	EAST CAMP/0730	EAST CAMP/1930
ENG6 - MES #6198 E-871		06/02	DANIEL PERKINS		EAST CAMP/0730	EAST CAMP/1930
ENG6 - FWS - 462 E-261		06/03	CHRISTOPHER NOTHSTINE	3	EAST CAMP/0730	EAST CAMP/1930
ENG6 REDBIRD E6171 E-447		06/06	RUPERT NOWLIN	2	EAST CAMP/0730	EAST CAMP/1930
TFLD O-635		05/31	BRIAN ANDERSON	1	EAST CAMP/0730	EAST CAMP/1930
ENG6 - 611 E-663		05/29	JORDAN BLACK	3	EAST CAMP/0730	EAST CAMP/1930
ENG6 - NMLNF621 - SACRAMENTO RD E-765		05/30	TIM MCELHNEY	4	EAST CAMP/0730	EAST CAMP/1930
ENG6 J3 CONTRACTING - 07 E-732		05/31	ANTHONY PARLIC	3	EAST CAMP/0730	EAST CAMP/1930
ENG6 J3 CONTRACTING - 12 E-733		05/31	LANCE WOLLEBAEK	3	EAST CAMP/0730	EAST CAMP/1930
TFLD O-594		06/05	MICHAEL SMITH	1	EAST CAMP/0730	EAST CAMP/1930
ENG6 - 161 E-656		06/10	CHARLES MCKINNEY	3	EAST CAMP/0730	EAST CAMP/1930
ENG6 - BOULDER COUNTY SHERIFF - 6531 E-847		05/31	KENYON SHEPHARD	6	EAST CAMP/0730	EAST CAMP/1930
WTS2 - BONNELL SAND & GRAVEL I E-366		06/06	HARLIN VINCENT	1	EAST CAMP/0730	EAST CAMP/1930
8. Division/Group Communication Summary						
Function	Channel	RX Frequency N/W	RX Tone/NAC	TX Frequency N/W	TX Tone/NAC	Mode
COMMAND	ZONE 2 / CH 3	159.1200N	NONE	151.3700N	82.5	A
AIR TO GROUND	ZONE 2 / CH 4	169.2000N	NONE	169.2000N	NONE	A
TACTICAL	ZONE 2 / CH 11	163.7125N	NONE	163.7125N	NONE	A
AIR TO GROUND	ZONE 2 / CH 14	166.6750N	NONE	166.6750N	NONE	A
AIR TO GROUND	ZONE 2 / CH 15	169.1500N	NONE	169.1500N	NONE	A
AIR GUARD	ZONE 2 / CH 16	168.6250N	NONE	168.6250N	110.9	A
9. Prepared By (Resource Unit Leader)			Approved By (Planning Section Chief)		Date	Time
SHAUN STEWART			JOE BISHOP, PSC2 (T)		05/28/2017	1800

Division/Group Assignment List (ICS 204 WF)

1. Incident Name:			3.			
WEST MIMS			III		O	
2. Operational Period: DAY SHIFT 0730-1930						
Date/Time From: 05/29/2017 0730 MON		Date/Time To: 05/29/2017 1930 MON				
4. Operations Personnel						
PLANNING OPERATIONS CHIEF		TRENT INGRAM		OPERATIONS CHIEF		
				RICK DOLAN FRED BOEHM, BRYCE THOMAS (T)		
BRANCH DIRECTOR		MARC CRAIN CHRIS LUNDGREN (T)		DIVISION/GROUP SUPERVISOR		
				SHAWN ALEXANDER MICHAEL GUE (T)		
SAFETY		LARRY CONNELL		AIR TACTICAL GROUP SUPERVISOR		
				MARK NUNEZ, KEN MCLAUGHLIN		
5. Resources Assigned this Period						
Strike Team / Task Force / Resource Designator		LWD	Leader	Number Persons	Drop Off PT./Time	Pick Up PT./Time
STEQ O-679		06/03	DAVID BROWN	1	EAST CAMP/0730	EAST CAMP/1930
TPL3 GFC 3266 E-370		06/03	SPENCER WOOD	2	EAST CAMP/0730	EAST CAMP/1930
TPL2 GFC 3307 E-371		06/03	CHRIS W MULLIS	2	EAST CAMP/0730	EAST CAMP/1930
TPL2 GFC 3295 E-372		06/03	BRIAN THOMPSON	2	EAST CAMP/0730	EAST CAMP/1930
TPL4 MSR2 E-594		06/03	MIKE SEAL	1	EAST CAMP/0730	EAST CAMP/1930
DO22 650K - VIN# 271777 E-528		06/08	JAMES DAVIS	1	EAST CAMP/0730	EAST CAMP/1930
DO22 - 750K - 261627 HASSELL E-530		06/09	JASON BOWEN		EAST CAMP/0730	EAST CAMP/1930
DO22 - HASSELL CO. - 278967 E-858		06/12		1	EAST CAMP/0730	EAST CAMP/1930
FOBS O-690		06/01	REED BRYAN HECKLY	1	EAST CAMP/0730	EAST CAMP/1930
FOBS O-691		05/30	BRYAN BOATMAN	1	EAST CAMP/0730	EAST CAMP/1930
FOBS (T) O-816		06/03	OLIVER M WAHLQUIST	1	EAST CAMP/0730	EAST CAMP/1930
FOBS (T) O-693		06/01	EVAN HAUGAN	1	EAST CAMP/0730	EAST CAMP/1930
EMPF O-752		06/09	BRYAN WARNER	1	EAST CAMP/0730	EAST CAMP/1930
SOF2 O-589		06/03	GALEN R YOUNG	1	EAST CAMP/0730	EAST CAMP/1930
8. Division/Group Communication Summary						
Function	Channel	RX Frequency N/W	RX Tone/NAC	TX Frequency N/W	TX Tone/NAC	Mode
COMMAND	ZONE 2 / CH 3	159.1200N	NONE	151.3700N	82.5	A
AIR TO GROUND	ZONE 2 / CH 4	169.2000N	NONE	169.2000N	NONE	A
TACTICAL	ZONE 2 / CH 11	163.7125N	NONE	163.7125N	NONE	A
AIR TO GROUND	ZONE 2 / CH 14	166.6750N	NONE	166.6750N	NONE	A
AIR TO GROUND	ZONE 2 / CH 15	169.1500N	NONE	169.1500N	NONE	A
AIR GUARD	ZONE 2 / CH 16	168.6250N	NONE	168.6250N	110.9	A
9. Prepared By (Resource Unit Leader)			Approved By (Planning Section Chief)		Date	Time
SHAUN STEWART			JOE BISHOP, PSC2 (T)		05/28/2017	1800

Division/Group Assignment List (ICS 204 WF)

1. Incident Name:			3.			
WEST MIMS			III		O	
2. Operational Period: DAY SHIFT 0730-1930						
Date/Time From: 05/29/2017 0730 MON		Date/Time To: 05/29/2017 1930 MON				
4. Operations Personnel						
PLANNING OPERATIONS CHIEF		TRENT INGRAM		OPERATIONS CHIEF		RICK DOLAN FRED BOEHM, BRYCE THOMAS (T)
BRANCH DIRECTOR		MARC CRAIN CHRIS LUNDGREN (T)		DIVISION/GROUP SUPERVISOR		SHAWN ALEXANDER MICHAEL GUE (T)
SAFETY		LARRY CONNELL		AIR TACTICAL GROUP SUPERVISOR		MARK NUNEZ, KEN MCLAUGHLIN
5. Resources Assigned this Period						
Strike Team / Task Force / Resource Designator		LWD	Leader	Number Persons	Drop Off PT./Time	Pick Up PT./Time
6. Control Operations/Work Assignments:						
Task						
<ul style="list-style-type: none"> • Respond to any new starts within the division. • Patrol and mop up fuels appropriate to fuel type and anticipated weather and fire behavior. 						
Purpose						
<ul style="list-style-type: none"> • Keep fire within established fire containment lines. 						
End State						
<ul style="list-style-type: none"> • Fire is contained by adequate control line to reduce threat to escape; minimizing damage to private timberlands, private lands, and other resource values at risk. 						
7. Special Instructions:						
Ensure LCES are in place before operations begin and stay hydrated. Drive defensively and with lights on at all times. Identify escape routes.						
Use caution when working around logging operations.						
For IA protocol see page 7						
Medical Emergency Channel: Command						
ETA for Ambulance to Scene:						
Air: 20 – 30 mins						
Ground: 10 - 15 mins Paved roads only.						
8. Division/Group Communication Summary						
Function	Channel	RX Frequency N/W	RX Tone/NAC	TX Frequency N/W	TX Tone/NAC	Mode
COMMAND	ZONE 2 / CH 3	159.1200N	NONE	151.3700N	82.5	A
AIR TO GROUND	ZONE 2 / CH 4	169.2000N	NONE	169.2000N	NONE	A
TACTICAL	ZONE 2 / CH 11	163.7125N	NONE	163.7125N	NONE	A
AIR TO GROUND	ZONE 2 / CH 14	166.6750N	NONE	166.6750N	NONE	A
AIR TO GROUND	ZONE 2 / CH 15	169.1500N	NONE	169.1500N	NONE	A
AIR GUARD	ZONE 2 / CH 16	168.6250N	NONE	168.6250N	110.9	A
9. Prepared By (Resource Unit Leader)			Approved By (Planning Section Chief)		Date	Time
SHAUN STEWART			JOE BISHOP, PSC2 (T)		05/28/2017	1800

Division/Group Assignment List (ICS 204 WF)

1. Incident Name:			3.			
WEST MIMS			III	O		
2. Operational Period: DAY SHIFT 0730-1930						
Date/Time From:	MON	Date/Time To:	MON			
05/29/2017 0730		05/29/2017 1930				
4. Operations Personnel						
PLANNING OPERATIONS CHIEF	TRENT INGRAM		OPERATIONS CHIEF	RICK DOLAN FRED BOEHM, BRYCE THOMAS (T)		
BRANCH DIRECTOR	MARC CRAIN CHRIS LUNDGREN (T)		DIVISION/GROUP SUPERVISOR	SHAWN ALEXANDER MICHAEL GUE (T)		
SAFETY	LARRY CONNELL		AIR TACTICAL GROUP SUPERVISOR	MARK NUNEZ, KEN MCLAUGHLIN		
7. Special Instructions:						
<p>IWI – IC or approved person will use Channel 16 (Air Guard) for contact with air ambulance Air Ambulance landing zone to be determined by IWI – IC Utilize engines to provide dust abatement, as needed, prior to air ambulance landing</p>						
8. Division/Group Communication Summary						
Function	Channel	RX Frequency N/W	RX Tone/NAC	TX Frequency N/W	TX Tone/NAC	Mode
COMMAND	ZONE 2 / CH 3	159.1200N	NONE	151.3700N	82.5	A
AIR TO GROUND	ZONE 2 / CH 4	169.2000N	NONE	169.2000N	NONE	A
TACTICAL	ZONE 2 / CH 11	163.7125N	NONE	163.7125N	NONE	A
AIR TO GROUND	ZONE 2 / CH 14	166.6750N	NONE	166.6750N	NONE	A
AIR TO GROUND	ZONE 2 / CH 15	169.1500N	NONE	169.1500N	NONE	A
AIR GUARD	ZONE 2 / CH 16	168.6250N	NONE	168.6250N	110.9	A
9. Prepared By (Resource Unit Leader)			Approved By (Planning Section Chief)		Date	Time
SHAUN STEWART			JOE BISHOP, PSC2 (T)		05/28/2017	1800

Division/Group Assignment List (ICS 204 WF)

1. Incident Name:			3.			
WEST MIMS			Branch:		Division/Group:	
2. Operational Period: DAY SHIFT 0730-1930			IV		A	
Date/Time From: 05/29/2017 0730 MON		Date/Time To: 05/29/2017 1930 MON				
4. Operations Personnel						
PLANNING OPERATIONS CHIEF		TRENT INGRAM		OPERATIONS CHIEF		RICK DOLAN FRED BOEHM, BRYCE THOMAS (T)
BRANCH DIRECTOR		MICHAEL WORK KAREN SCHOLL (T)		DIVISION/GROUP SUPERVISOR		TOM TALBOT JEFF BOSTWICK (T)
SAFETY		LARRY CONNELL		AIR TACTICAL GROUP SUPERVISOR		MARK NUNEZ, KEN MCLAUGHLIN
5. Resources Assigned this Period						
Strike Team / Task Force / Resource Designator		LWD	Leader	Number Persons	Drop Off PT./Time	Pick Up PT./Time
TFLD O-606		06/04	DAREK PEPPE	1	EAST CAMP/0730	EAST CAMP/1930
TFLD (T) O-672		05/30	JAMIE TYSON	1	EAST CAMP/0730	EAST CAMP/1930
ENG3 CO-PBS DEER MOUNTAIN FPD 12 E-280		06/06	JOSEPH CRAIG WATTS	3	EAST CAMP/0730	EAST CAMP/1930
ENG6 MT-KNF 631 E-285		05/31	JULIAN ADAUTO	5	EAST CAMP/0730	EAST CAMP/1930
ENG6 MS-MNF 6171 E-77		06/05	DAVID GIBSON	3	EAST CAMP/0730	EAST CAMP/1930
ENG6 AR-OZF 631 E-56		06/04	DARRYL BRIGHTWELL	3	EAST CAMP/0730	EAST CAMP/1930
ENG6 J3 PVT 07 E-731		05/31	JACOB VAVRICKA	3	EAST CAMP/0730	EAST CAMP/1930
ENG6 KY-KYS 410 E-661		06/11	KEVIN RADSCHWEIT	2	EAST CAMP/0730	EAST CAMP/1930
ENG6 - KY-KYS - 310 E-660		06/11	JOHN MINK	2	EAST CAMP/0730	EAST CAMP/1930
ENGINE - T6 - GFC4201452 E-1019		06/11	DON THOMAS			
WTS2 STRICKLANDS E-272		06/05	JOHN TINER	1	EAST CAMP/0730	EAST CAMP/1930
WTS2 TIPTON & YOUNG E-347		06/05	ROBERT COYLE	1	EAST CAMP/0730	EAST CAMP/1930
8. Division/Group Communication Summary						
Function	Channel	RX Frequency N/W	RX Tone/NAC	TX Frequency N/W	TX Tone/NAC	Mode
AIR TO GROUND	ZONE 2 / CH 4	169.2000N	NONE	169.2000N	NONE	A
COMMAND	ZONE 2 / CH 8	159.2700N	156.7	151.1000N	123.0	A
TACTICAL	ZONE 2 / CH 12	159.4425N	NONE	159.4425N	NONE	A
AIR TO GROUND	ZONE 2 / CH 14	166.6750N	NONE	166.6750N	NONE	A
AIR TO GROUND	ZONE 2 / CH 15	169.1500N	NONE	169.1500N	NONE	A
AIR GUARD	ZONE 2 / CH 16	168.6250N	NONE	168.6250N	110.9	A
9. Prepared By (Resource Unit Leader)			Approved By (Planning Section Chief)		Date	Time
PEECH KELLER			JOE BISHOP, PSC2 (T)		05/28/2017	1800

Division/Group Assignment List (ICS 204 WF)

1. Incident Name:			3.			
WEST MIMS			IV		A	
2. Operational Period: DAY SHIFT 0730-1930						
Date/Time From: 05/29/2017 0730 MON		Date/Time To: 05/29/2017 1930 MON				
4. Operations Personnel						
PLANNING OPERATIONS CHIEF		TRENT INGRAM		OPERATIONS CHIEF		RICK DOLAN FRED BOEHM, BRYCE THOMAS (T)
BRANCH DIRECTOR		MICHAEL WORK KAREN SCHOLL (T)		DIVISION/GROUP SUPERVISOR		TOM TALBOT JEFF BOSTWICK (T)
SAFETY		LARRY CONNELL		AIR TACTICAL GROUP SUPERVISOR		MARK NUNEZ, KEN MCLAUGHLIN
5. Resources Assigned this Period						
Strike Team / Task Force / Resource Designator		LWD	Leader	Number Persons	Drop Off PT./Time	Pick Up PT./Time
TFLD O-656		05/31	KEN COOPER	1	EAST CAMP/0730	EAST CAMP/1930
TPL4 8191 - HUNTSVILLE E-570		06/07	BERNHARD BUCKNER	2	EAST CAMP/0730	EAST CAMP/1930
TPL4 TX-TFS E-471		06/07	MAYNARD WILLIAMS	2	EAST CAMP/0730	EAST CAMP/1930
TPL4 6192 - NEW BOSTON E-467		06/07	JONATHON KELLER	2	EAST CAMP/0730	EAST CAMP/1930
TPL4 7292 - JACKSONVILLE E-571		05/26	TERRY RICHARDSON		EAST CAMP/0730	EAST CAMP/1930
FOBS O-694		06/01	JASON KAMMANN	1	ICP/0730	ICP/1930
FOBS (T) O-696		06/01	HAPPY HOPPE	1	ICP/0730	ICP/1930
EMPF E-375.2		06/13	MARTIN CARRILLO	1	EAST CAMP/0730	EAST CAMP/1930
SOF2 O-540 229-561-4259		06/12	JACK BENZILIO	1	EAST CAMP/0730	EAST CAMP/1930
6. Control Operations/Work Assignments:						
Task						
<ul style="list-style-type: none"> • Patrol and mop up fuels appropriate to fuel type and anticipated weather and fire behavior. • Respond to any new starts within the division. 						
Purpose						
<ul style="list-style-type: none"> • Keep fire north of FL 2. 						
End State						
<ul style="list-style-type: none"> • Fire is contained by adequate control line to reduce threat to escape; minimizing damage to private timberlands, private lands, and other resource values at risk. 						
8. Division/Group Communication Summary						
Function	Channel	RX Frequency N/W	RX Tone/NAC	TX Frequency N/W	TX Tone/NAC	Mode
AIR TO GROUND	ZONE 2 / CH 4	169.2000N	NONE	169.2000N	NONE	A
COMMAND	ZONE 2 / CH 8	159.2700N	156.7	151.1000N	123.0	A
TACTICAL	ZONE 2 / CH 12	159.4425N	NONE	159.4425N	NONE	A
AIR TO GROUND	ZONE 2 / CH 14	166.6750N	NONE	166.6750N	NONE	A
AIR TO GROUND	ZONE 2 / CH 15	169.1500N	NONE	169.1500N	NONE	A
AIR GUARD	ZONE 2 / CH 16	168.6250N	NONE	168.6250N	110.9	A
9. Prepared By (Resource Unit Leader)			Approved By (Planning Section Chief)		Date	Time
PEECH KELLER			JOE BISHOP, PSC2 (T)		05/28/2017	1800

Division/Group Assignment List (ICS 204 WF)

1. Incident Name:			3.			
WEST MIMS			IV		A	
2. Operational Period: DAY SHIFT 0730-1930						
Date/Time From: 05/29/2017 0730 MON		Date/Time To: 05/29/2017 1930 MON				
4. Operations Personnel						
PLANNING OPERATIONS CHIEF		TRENT INGRAM		OPERATIONS CHIEF		RICK DOLAN FRED BOEHM, BRYCE THOMAS (T)
BRANCH DIRECTOR		MICHAEL WORK KAREN SCHOLL (T)		DIVISION/GROUP SUPERVISOR		TOM TALBOT JEFF BOSTWICK (T)
SAFETY		LARRY CONNELL		AIR TACTICAL GROUP SUPERVISOR		MARK NUNEZ, KEN MCLAUGHLIN
7. Special Instructions:						
<p>Ensure LCES is in place before operations begin and stay hydrated. Drive defensively and with lights on at all times. Identify escape routes. Bridge near DP 9 restricted to pickups - No engines. Bridge on swamp perimeter road just east of first Branch has steep drop offs - 1 lane travel - watch for barricades.</p> <p>Use caution when working around logging operations.</p> <p>For IA protocol see page 7</p> <p>Medical Emergency Channel: Command ETA for Ambulance to Scene: Air: 20 – 30 mins Ground: 10 - 15 mins Paved roads only. IWI – IC or approved person will use Channel 16 (Air Guard) for contact with air ambulance Air Ambulance landing zone to be determined by IWI – IC Utilize engines to provide dust abatement, as needed, prior to air ambulance landing</p>						
8. Division/Group Communication Summary						
Function	Channel	RX Frequency N/W	RX Tone/NAC	TX Frequency N/W	TX Tone/NAC	Mode
AIR TO GROUND	ZONE 2 / CH 4	169.2000N	NONE	169.2000N	NONE	A
COMMAND	ZONE 2 / CH 8	159.2700N	156.7	151.1000N	123.0	A
TACTICAL	ZONE 2 / CH 12	159.4425N	NONE	159.4425N	NONE	A
AIR TO GROUND	ZONE 2 / CH 14	166.6750N	NONE	166.6750N	NONE	A
AIR TO GROUND	ZONE 2 / CH 15	169.1500N	NONE	169.1500N	NONE	A
AIR GUARD	ZONE 2 / CH 16	168.6250N	NONE	168.6250N	110.9	A
9. Prepared By (Resource Unit Leader)			Approved By (Planning Section Chief)		Date	Time
PEECH KELLER			JOE BISHOP, PSC2 (T)		05/28/2017	1800

Division/Group Assignment List (ICS 204 WF)

1. Incident Name:			3.			
WEST MIMS			Branch:		Division/Group:	
2. Operational Period: DAY SHIFT 0730-1930			IV		Y	
Date/Time From: 05/29/2017 0730 MON		Date/Time To: 05/29/2017 1930 MON				
4. Operations Personnel						
OPERATIONS CHIEF		TRENT INGRAM		OPERATIONS CHIEF		RICK DOLAN FRED BOEHM, BRYCE THOMAS (T)
BRANCH DIRECTOR		MICHAEL WORK KAREN SCHOLL (T)		DIVISION/GROUP SUPERVISOR		RANDY GREGORY SEAN BASSO (T)
SAFETY		LARRY CONNELL		AIR TACTICAL GROUP SUPERVISOR		MARK NUNEZ, KEN MCLAUGHLIN
5. Resources Assigned this Period						
Strike Team / Task Force / Resource Designator		LWD	Leader	Number Persons	Drop Off PT./Time	Pick Up PT./Time
STEQ O-797		06/11	JACOB ROBERT HOPPE	1	EAST CAMP/0730	EAST CAMP/1930
TFLD O-508		05/30	LISA M GOWE	1	EAST CAMP/0730	EAST CAMP/1930
ENG3 CO-DRS DURANGO BRUSH 31 E-869		06/03	ALLEN R OTTMAN	4	EAST CAMP/0730	EAST CAMP/1930
ENG6 AR-OZF BM - E-651 E-713		06/02	PAUL DZIEKAN	3	EAST CAMP/0730	EAST CAMP/1930
ENG6 - BANKHEAD E611 E654 E-654		06/08	JOHN EDWARD GARCIA	3	EAST CAMP/0730	EAST CAMP/1930
ENG6 - KY-KYS - 110 E-658		06/11	DENNIS WOOLARD	2	EAST CAMP/0730	EAST CAMP/1930
ENG6 - KY-KYS - 111 E-659		06/11	MICHAEL FROELICH	2	EAST CAMP/0730	EAST CAMP/1930
WTS1 - 357 - PB 350505 HASSELL E-476		06/09	ROBERT EDENFIELD	1	EAST CAMP/0730	EAST CAMP/1930
GOAT 1 - UTV PENDER LAND E-797		06/01	KEVIN CROOM	1	EAST CAMP/0730	EAST CAMP/1930
GOAT 2 - UTV ENDICOTT E-798		06/01	THOMAS ENDICOTT	1	EAST CAMP/0730	EAST CAMP/1930
8. Division/Group Communication Summary						
Function	Channel	RX Frequency N/W	RX Tone/NAC	TX Frequency N/W	TX Tone/NAC	Mode
AIR TO GROUND	ZONE 2 / CH 4	169.2000N	NONE	169.2000N	NONE	A
COMMAND	ZONE 2 / CH 8	159.2700N	156.7	151.1000N	123.0	A
TACTICAL	ZONE 2 / CH 9	159.2850N	NONE	159.2850N	156.7	A
AIR TO GROUND	ZONE 2 / CH 14	166.6750N	NONE	166.6750N	NONE	A
AIR TO GROUND	ZONE 2 / CH 15	169.1500N	NONE	169.1500N	NONE	A
AIR GUARD	ZONE 2 / CH 16	168.6250N	NONE	168.6250N	110.9	A
9. Prepared By (Resource Unit Leader)			Approved By (Planning Section Chief)		Date	Time
PEECH KELLER			JOE BISHOP, PSC2 (T)		05/28/2017	1800

Division/Group Assignment List (ICS 204 WF)

1. Incident Name:			3.			
WEST MIMS			IV		Y	
2. Operational Period: DAY SHIFT 0730-1930						
Date/Time From: 05/29/2017 0730 MON		Date/Time To: 05/29/2017 1930 MON				
4. Operations Personnel						
OPERATIONS CHIEF		TRENT INGRAM		OPERATIONS CHIEF		RICK DOLAN FRED BOEHM, BRYCE THOMAS (T)
BRANCH DIRECTOR		MICHAEL WORK KAREN SCHOLL (T)		DIVISION/GROUP SUPERVISOR		RANDY GREGORY SEAN BASSO (T)
SAFETY		LARRY CONNELL		AIR TACTICAL GROUP SUPERVISOR		MARK NUNEZ, KEN MCLAUGHLIN
5. Resources Assigned this Period						
Strike Team / Task Force / Resource Designator		LWD	Leader	Number Persons	Drop Off PT./Time	Pick Up PT./Time
TFLD O-648		05/30	STEVE YOUNG	1	EAST CAMP/0730	EAST CAMP/1930
ENG6 SC-SRF 603 E-662		06/09	SHAUN DEASON	3	EAST CAMP/0730	EAST CAMP/1930
WTT1 - VIN# E-588			HUBERT EDENFIELD HASSELLCO	1	EAST CAMP/0730	EAST CAMP/1930
HEQB O-644		05/29	TRENTON NEIL	1	EAST CAMP/0730	EAST CAMP/1930
DOZ2 - VIN# 922092 E-584		05/26	SIMMONS	1	EAST CAMP/0730	EAST CAMP/1930
EMPF O-753		06/08	WADE ALLEN	1	EAST CAMP/0730	EAST CAMP/1930
SOF2 O-494		06/14	DARROLL K ABEYTA	1	EAST CAMP/0730	EAST CAMP/1930
6. Control Operations/Work Assignments:						
Task						
<ul style="list-style-type: none"> • Respond to any new starts within the division. • Patrol and mop up fuels appropriate to fuel type and anticipated weather and fire behavior. Eliminate obvious smoke which will trigger unnecessary calls to 911 system. 						
Purpose						
<ul style="list-style-type: none"> • Keep fire within established fire containment lines. 						
End State						
<ul style="list-style-type: none"> • Fire is contained by adequate control line to reduce threat to escape; minimizing damage to private timberlands, private lands, and other resource values at risk. 						
8. Division/Group Communication Summary						
Function	Channel	RX Frequency N/W	RX Tone/NAC	TX Frequency N/W	TX Tone/NAC	Mode
AIR TO GROUND	ZONE 2 / CH 4	169.2000N	NONE	169.2000N	NONE	A
COMMAND	ZONE 2 / CH 8	159.2700N	156.7	151.1000N	123.0	A
TACTICAL	ZONE 2 / CH 9	159.2850N	NONE	159.2850N	156.7	A
AIR TO GROUND	ZONE 2 / CH 14	166.6750N	NONE	166.6750N	NONE	A
AIR TO GROUND	ZONE 2 / CH 15	169.1500N	NONE	169.1500N	NONE	A
AIR GUARD	ZONE 2 / CH 16	168.6250N	NONE	168.6250N	110.9	A
9. Prepared By (Resource Unit Leader)			Approved By (Planning Section Chief)		Date	Time
PEECH KELLER			JOE BISHOP, PSC2 (T)		05/28/2017	1800

Division/Group Assignment List (ICS 204 WF)

1. Incident Name:			3.				
WEST MIMS			IV		Y		
2. Operational Period: DAY SHIFT 0730-1930							
Date/Time From: 05/29/2017 0730 MON		Date/Time To: 05/29/2017 1930 MON					
4. Operations Personnel							
OPERATIONS CHIEF		TRENT INGRAM		OPERATIONS CHIEF		RICK DOLAN FRED BOEHM, BRYCE THOMAS (T)	
BRANCH DIRECTOR		MICHAEL WORK KAREN SCHOLL (T)		DIVISION/GROUP SUPERVISOR		RANDY GREGORY SEAN BASSO (T)	
SAFETY		LARRY CONNELL		AIR TACTICAL GROUP SUPERVISOR		MARK NUNEZ, KEN MCLAUGHLIN	
7. Special Instructions:							
<p>Ensure LCES is in place before operations begin and stay hydrated. Drive defensively and with lights on at all times. Identify escape routes. Bridge near DP 9 restricted to pickups - No engines. Bridge on swamp perimeter road just east of first Branch has steep drop offs - 1 lane travel - watch for barricades.</p> <p>Use caution when working around logging operations.</p> <p>For IA protocol see page 7</p> <p>Medical Emergency Channel: Command ETA for Ambulance to Scene: Air: 20 – 30 mins Ground: 10 - 15 mins Paved roads only. IWI – IC or approved person will use Channel 16 (Air Guard) for contact with air ambulance Air Ambulance landing zone to be determined by IWI – IC Utilize engines to provide dust abatement, as needed, prior to air ambulance landing</p>							
8. Division/Group Communication Summary							
Function		Channel	RX Frequency N/W	RX Tone/NAC	TX Frequency N/W	TX Tone/NAC	Mode
AIR TO GROUND		ZONE 2 / CH 4	169.2000N	NONE	169.2000N	NONE	A
COMMAND		ZONE 2 / CH 8	159.2700N	156.7	151.1000N	123.0	A
TACTICAL		ZONE 2 / CH 9	159.2850N	NONE	159.2850N	156.7	A
AIR TO GROUND		ZONE 2 / CH 14	166.6750N	NONE	166.6750N	NONE	A
AIR TO GROUND		ZONE 2 / CH 15	169.1500N	NONE	169.1500N	NONE	A
AIR GUARD		ZONE 2 / CH 16	168.6250N	NONE	168.6250N	110.9	A
9. Prepared By (Resource Unit Leader)			Approved By (Planning Section Chief)			Date	Time
PEECH KELLER			JOE BISHOP, PSC2 (T)			05/28/2017	1800

Division/Group Assignment List (ICS 204 WF)

1. Incident Name:			3.			
WEST MIMS			IV		Z	
2. Operational Period: DAY SHIFT 0730-1930						
Date/Time From: 05/29/2017 0730 MON		Date/Time To: 05/29/2017 1930 MON				
4. Operations Personnel						
OPERATIONS CHIEF		TRENT INGRAM		OPERATIONS CHIEF		
				RICK DOLAN FRED BOEHM, BRYCE THOMAS (T)		
BRANCH DIRECTOR		MICHAEL WORK KAREN SCHOLL (T)		DIVISION/GROUP SUPERVISOR		
				JASON LONGFELLOW		
SAFETY		LARRY CONNELL		AIR TACTICAL GROUP SUPERVISOR		
				MARK NUNEZ, KEN MCLAUGHLIN		
5. Resources Assigned this Period						
Strike Team / Task Force / Resource Designator		LWD	Leader	Number Persons	Drop Off PT./Time	Pick Up PT./Time
TFLD O-653		05/31	RYAN RAWLINSON	1	EAST CAMP/0730	EAST CAMP/1930
ENG6 - OLF - E-692 E-482		06/06	JODI STONE	4	EAST CAMP/0730	EAST CAMP/1930
ENG6 - AR-OUF - PCS - E-692 E-737		05/29	MATTHEW MICHAEL KAMPF	3	EAST CAMP/0730	EAST CAMP/1930
WTT2 - VIN# 009542 E-409			ANTHONY PALVICK	1	EAST CAMP/0730	EAST CAMP/1930
WTT2 - FARRELL TIMBER - VIN# 557261 E-410		06/04	DON WILSON	1	EAST CAMP/0730	EAST CAMP/1930
STEN O-658		05/29	JAMES T ALLISON	1	EAST CAMP/0730	EAST CAMP/1930
ENG6 - 361 E-775		05/29	DAVID T MARBERT	3	EAST CAMP/0730	EAST CAMP/1930
ENG6 - NMN2S - E 2-2 E-767		05/29	MAYLON BERT BROWN	2	EAST CAMP/0730	EAST CAMP/1930
WTT2 - VIN# 9250 E-574		06/02	TONY TIPTON	1	EAST CAMP/0730	EAST CAMP/1930
STEQ O-736		06/06	JEREMY CALLICUTT	1	EAST CAMP/0730	EAST CAMP/1930
TPL3 NC-NCS - 3X77 E-568		06/06	JACK FRANKLIN	2	EAST CAMP/0730	EAST CAMP/1930
TPL3 NC-NCS - 3X65 E-569		06/06	MARK ALLEN	2	EAST CAMP/0730	EAST CAMP/1930
EXCA T1 - VIN# 470405 HASSELL E-620		06/09		1	EAST CAMP/0730	EAST CAMP/1930
8. Division/Group Communication Summary						
Function	Channel	RX Frequency N/W	RX Tone/NAC	TX Frequency N/W	TX Tone/NAC	Mode
AIR TO GROUND	ZONE 2 / CH 4	169.2000N	NONE	169.2000N	NONE	A
COMMAND	ZONE 2 / CH 8	159.2700N	156.7	151.1000N	123.0	A
TACTICAL	ZONE 2 / CH 10	168.3500N	NONE	168.3500N	NONE	A
AIR TO GROUND	ZONE 2 / CH 14	166.6750N	NONE	166.6750N	NONE	A
AIR TO GROUND	ZONE 2 / CH 15	169.1500N	NONE	169.1500N	NONE	A
AIR GUARD	ZONE 2 / CH 16	168.6250N	NONE	168.6250N	110.9	A
9. Prepared By (Resource Unit Leader)			Approved By (Planning Section Chief)		Date	Time
PEECH KELLER			JOE BISHOP, PSC2 (T)		05/28/2017	1800

Division/Group Assignment List (ICS 204 WF)

1. Incident Name:			3.			
WEST MIMS			IV		Z	
2. Operational Period: DAY SHIFT 0730-1930						
Date/Time From: 05/29/2017 0730 MON		Date/Time To: 05/29/2017 1930 MON				
4. Operations Personnel						
OPERATIONS CHIEF		TRENT INGRAM		OPERATIONS CHIEF		RICK DOLAN FRED BOEHM, BRYCE THOMAS (T)
BRANCH DIRECTOR		MICHAEL WORK KAREN SCHOLL (T)		DIVISION/GROUP SUPERVISOR		JASON LONGFELLOW
SAFETY		LARRY CONNELL		AIR TACTICAL GROUP SUPERVISOR		MARK NUNEZ, KEN MCLAUGHLIN
5. Resources Assigned this Period						
Strike Team / Task Force / Resource Designator		LWD	Leader	Number Persons	Drop Off PT./Time	Pick Up PT./Time
EMPF E-314 602-571-2505		05/30	JOHN HECK	1	EAST CAMP/0730	EAST CAMP/1930
SOF2 O-494 505-470-2012		06/13	DARROLL ABEYTA	1	EAST CAMP/0730	EAST CAMP/1930
6. Control Operations/Work Assignments:						
<p>Task</p> <ul style="list-style-type: none"> • Respond to any new starts within the division. • Patrol and mop up fuels appropriate to fuel type and anticipated weather and fire behavior. • Rehabilitate contingency line. <p>Purpose</p> <ul style="list-style-type: none"> • Keep fire within established fire containment lines. <p>End State</p> <ul style="list-style-type: none"> • Fire is contained by adequate control line to reduce threat to escape; minimizing damage to private timberlands, private lands, and other resource values at risk. 						
7. Special Instructions:						
<p>Use caution when working around logging operations.</p> <p>Medical Emergency Channel: Command ETA for Ambulance to Scene: Air: 20 – 30 mins Ground: 10 - 15 mins Paved roads only. IWI – IC or approved person will use Channel 16 (Air Guard) for contact with air ambulance Air Ambulance landing zone to be determined by IWI – IC Utilize engines to provide dust abatement, as needed, prior to air ambulance landing</p>						
8. Division/Group Communication Summary						
Function	Channel	RX Frequency N/W	RX Tone/NAC	TX Frequency N/W	TX Tone/NAC	Mode
AIR TO GROUND	ZONE 2 / CH 4	169.2000N	NONE	169.2000N	NONE	A
COMMAND	ZONE 2 / CH 8	159.2700N	156.7	151.1000N	123.0	A
TACTICAL	ZONE 2 / CH 10	168.3500N	NONE	168.3500N	NONE	A
AIR TO GROUND	ZONE 2 / CH 14	166.6750N	NONE	166.6750N	NONE	A
AIR TO GROUND	ZONE 2 / CH 15	169.1500N	NONE	169.1500N	NONE	A
AIR GUARD	ZONE 2 / CH 16	168.6250N	NONE	168.6250N	110.9	A
9. Prepared By (Resource Unit Leader)			Approved By (Planning Section Chief)		Date	Time
PEECH KELLER			JOE BISHOP, PSC2 (T)		05/28/2017	1800

Division/Group Assignment List (ICS 204 WF)

1. Incident Name:			3.			
WEST MIMS			IV	Z		
2. Operational Period: DAY SHIFT 0730-1930						
Date/Time From: 05/29/2017 0730	MON	Date/Time To: 05/29/2017 1930	MON			
4. Operations Personnel						
OPERATIONS CHIEF	TRENT INGRAM		OPERATIONS CHIEF	RICK DOLAN FRED BOEHM, BRYCE THOMAS (T)		
BRANCH DIRECTOR	MICHAEL WORK KAREN SCHOLL (T)		DIVISION/GROUP SUPERVISOR	JASON LONGFELLOW		
SAFETY	LARRY CONNELL		AIR TACTICAL GROUP SUPERVISOR	MARK NUNEZ, KEN MCLAUGHLIN		
7. Special Instructions:						
<p>For IA protocol see page 7</p> <p>2 - TPL Okie - O/H Donnie Harris DIVS 1 - 1050 KG - with operator GFC 1 - Appalachia 750 (Lease) with operator STEQ with 3-T2 Tractor Plow STEQ (Weaver) with 4-T3 Tractor Plow</p>						
8. Division/Group Communication Summary						
Function	Channel	RX Frequency N/W	RX Tone/NAC	TX Frequency N/W	TX Tone/NAC	Mode
AIR TO GROUND	ZONE 2 / CH 4	169.2000N	NONE	169.2000N	NONE	A
COMMAND	ZONE 2 / CH 8	159.2700N	156.7	151.1000N	123.0	A
TACTICAL	ZONE 2 / CH 10	168.3500N	NONE	168.3500N	NONE	A
AIR TO GROUND	ZONE 2 / CH 14	166.6750N	NONE	166.6750N	NONE	A
AIR TO GROUND	ZONE 2 / CH 15	169.1500N	NONE	169.1500N	NONE	A
AIR GUARD	ZONE 2 / CH 16	168.6250N	NONE	168.6250N	110.9	A
9. Prepared By (Resource Unit Leader)			Approved By (Planning Section Chief)		Date	Time
PEECH KELLER			JOE BISHOP, PSC2 (T)		05/28/2017	1800

Division/Group Assignment List (ICS 204 WF)

1. Incident Name:			3.			
WEST MIMS			ROAD MAINT		Division/Group: EAST	
2. Operational Period: DAY SHIFT 0730-1930						
Date/Time From: 05/29/2017 0730 MON		Date/Time To: 05/29/2017 1930 MON				
4. Operations Personnel						
PLANNING OPERATIONS CHIEF		TRENT INGRAM		OPERATIONS CHIEF		RICK DOLAN FRED BOEHM, BRYCE THOMAS (T)
BRANCH DIRECTOR		BOB LITTLE		DIVISION/GROUP SUPERVISOR		KRIS CRODDY CASEY A O'CONNOR (T)
SAFETY		LARRY CONNELL		AIR TACTICAL GROUP SUPERVISOR		MARK NUNEZ KEN MCLAUGHLIN
5. Resources Assigned this Period						
Strike Team / Task Force / Resource Designator		LWD	Leader	Number Persons	Drop Off PT./Time	Pick Up PT./Time
TFLD O-652		05/30	LONNY HAGEDON	1	EAST CAMP/0730	EAST CAMP/1930
TFLD (T) O-671		05/29	JAMES BARBERI	1	EAST CAMP/0730	EAST CAMP/1930
HEQB O-646		05/29	CHAD TUSS	1	EAST CAMP/0730	EAST CAMP/1930
WTS2 - TIPTON & YOUNG E-313		06/03	WOODY BARGERON	1	EAST CAMP/0730	EAST CAMP/1930
WTS2 - VIN# Z73020 E-746				1	EAST CAMP/0730	EAST CAMP/1930
WTS2 - HOME STYLE E-644		06/05	JOHNNY CASTILLO	1	EAST CAMP/0730	EAST CAMP/1930
WTS2 - E-340		06/04	DEVIN MCHZLEY	1	EAST CAMP/0730	EAST CAMP/1930
GRD2 CORNELIUS E-942		06/05	JASON MERRITT	1	EAST CAMP/0730	EAST CAMP/1930
HEQB O-547		06/12	RODNEY HELZER	1	EAST CAMP/0730	EAST CAMP/1930
GRD2 - R.O.T. RANCH E-234		06/05	ROBBY WORRELL	1	EAST CAMP/0730	EAST CAMP/1930
GRD2 - R.O.T. RANCH E-639		05/26	WESLEY WOOD	1	EAST CAMP/0730	EAST CAMP/1930
8. Division/Group Communication Summary						
Function	Channel	RX Frequency N/W	RX Tone/NAC	TX Frequency N/W	TX Tone/NAC	Mode
COMMAND	ZONE 2 / CH 3	159.1200N	NONE	151.3700N	82.5	A
AIR TO GROUND	ZONE 2 / CH 4	169.2000N	NONE	169.2000N	NONE	A
TACTICAL	ZONE 2 / CH 10	168.3500N	NONE	168.3500N	NONE	A
AIR TO GROUND	ZONE 2 / CH 14	166.6750N	NONE	166.6750N	NONE	A
AIR TO GROUND	ZONE 2 / CH 15	169.1500N	NONE	169.1500N	NONE	A
AIR GUARD	ZONE 2 / CH 16	168.6250N	NONE	168.6250N	110.9	A
9. Prepared By (Resource Unit Leader)			Approved By (Planning Section Chief)		Date	Time
SHAUN STEWART			JOE BISHOP, PSC2 (T)		05/28/2017	1800

Division/Group Assignment List (ICS 204 WF)

1. Incident Name:			3.			
WEST MIMS			Branch:		Division/Group:	
2. Operational Period: DAY SHIFT 0730-1930			ROAD MAINT		EAST	
Date/Time From: 05/29/2017 0730 MON		Date/Time To: 05/29/2017 1930 MON				
4. Operations Personnel						
PLANNING OPERATIONS CHIEF		TRENT INGRAM		OPERATIONS CHIEF		RICK DOLAN FRED BOEHM, BRYCE THOMAS (T)
BRANCH DIRECTOR		BOB LITTLE		DIVISION/GROUP SUPERVISOR		KRIS CRODDY CASEY A O'CONNOR (T)
SAFETY		LARRY CONNELL		AIR TACTICAL GROUP SUPERVISOR		MARK NUNEZ KEN MCLAUGHLIN
5. Resources Assigned this Period						
Strike Team / Task Force / Resource Designator		LWD	Leader	Number Persons	Drop Off PT./Time	Pick Up PT./Time
TFLD O-650		05/30	JAMES SPARROW	1	EAST CAMP/0730	EAST CAMP/1930
EXCA V# 500242 E-626		05/30			EAST CAMP/0730	EAST CAMP/1930
TDMP - VIN# 54083 E-624		05/28		1	EAST CAMP/0730	EAST CAMP/1930
TRUCK DUMP - VIN# 64094 E-625		05/30			EAST CAMP/0730	EAST CAMP/1930
TDMP CORNELIUS FARMS # 17006 E-879		05/31	EDGAR DIXON		EAST CAMP/0730	EAST CAMP/1930
TDMP CORNELIUS FARMS #633987 E-880		05/31	SAMMY HENDRIX	1	EAST CAMP/0730	EAST CAMP/1930
TDMP CORNELIUS E-937		06/04			EAST CAMP/0730	EAST CAMP/1930
TDMP CORNELIUS E-938		06/04			EAST CAMP/0730	EAST CAMP/1930
TDMP CORNELIUS E-939					EAST CAMP/0730	EAST CAMP/1930
TDMP CORNELIUS E-940		06/05			EAST CAMP/0730	EAST CAMP/1930
8. Division/Group Communication Summary						
Function	Channel	RX Frequency N/W	RX Tone/NAC	TX Frequency N/W	TX Tone/NAC	Mode
COMMAND	ZONE 2 / CH 3	159.1200N	NONE	151.3700N	82.5	A
AIR TO GROUND	ZONE 2 / CH 4	169.2000N	NONE	169.2000N	NONE	A
TACTICAL	ZONE 2 / CH 10	168.3500N	NONE	168.3500N	NONE	A
AIR TO GROUND	ZONE 2 / CH 14	166.6750N	NONE	166.6750N	NONE	A
AIR TO GROUND	ZONE 2 / CH 15	169.1500N	NONE	169.1500N	NONE	A
AIR GUARD	ZONE 2 / CH 16	168.6250N	NONE	168.6250N	110.9	A
9. Prepared By (Resource Unit Leader)			Approved By (Planning Section Chief)		Date	Time
SHAUN STEWART			JOE BISHOP, PSC2 (T)		05/28/2017	1800

Division/Group Assignment List (ICS 204 WF)

1. Incident Name:			3.			
WEST MIMS			Branch:		Division/Group:	
2. Operational Period:			ROAD MAINT		EAST	
Date/Time From: 05/29/2017 0730 MON		Date/Time To: 05/29/2017 1930 MON				
4. Operations Personnel						
PLANNING OPERATIONS CHIEF		TRENT INGRAM		OPERATIONS CHIEF		RICK DOLAN FRED BOEHM, BRYCE THOMAS (T)
BRANCH DIRECTOR		BOB LITTLE		DIVISION/GROUP SUPERVISOR		KRIS CRODDY CASEY A O'CONNOR (T)
SAFETY		LARRY CONNELL		AIR TACTICAL GROUP SUPERVISOR		MARK NUNEZ KEN MCLAUGHLIN
6. Control Operations/Work Assignments:						
Task						
<ul style="list-style-type: none"> • Assess access roads to fire perimeter; repair or maintain as necessary in accordance with priority list provided by Operations Section Chief. • Provide adequate signage for traffic safety. • Assess single lane bridges and culverts for safety and maintenance needs. 						
Purpose						
<ul style="list-style-type: none"> • To keep adequate vehicular access to the fire perimeter. 						
End State						
<ul style="list-style-type: none"> • Access roads are in a safe and travel worthy condition. 						
7. Special Instructions:						
Check in and out with Division Supervisor when moving between divisions.						
Medical Emergency Channel: Command ETA for Ambulance to Scene: Air: 20-30 mins Ground: 10-15 mins Paved road only. IWI - IC or approved person will use Channel 16 (Air Guard) for contact with air ambulance. Air Ambulance landing zone to be determined by IWI - IC. Utilize engines to provide dust abatement, as needed, prior to air ambulance landing.						
8. Division/Group Communication Summary						
Function	Channel	RX Frequency N/W	RX Tone/NAC	TX Frequency N/W	TX Tone/NAC	Mode
COMMAND	ZONE 2 / CH 3	159.1200N	NONE	151.3700N	82.5	A
AIR TO GROUND	ZONE 2 / CH 4	169.2000N	NONE	169.2000N	NONE	A
TACTICAL	ZONE 2 / CH 10	168.3500N	NONE	168.3500N	NONE	A
AIR TO GROUND	ZONE 2 / CH 14	166.6750N	NONE	166.6750N	NONE	A
AIR TO GROUND	ZONE 2 / CH 15	169.1500N	NONE	169.1500N	NONE	A
AIR GUARD	ZONE 2 / CH 16	168.6250N	NONE	168.6250N	110.9	A
9. Prepared By (Resource Unit Leader)			Approved By (Planning Section Chief)		Date	Time
SHAUN STEWART			JOE BISHOP, PSC2 (T)		05/28/2017	1800

Division/Group Assignment List (ICS 204 WF)

1. Incident Name:			3.			
WEST MIMS			ROAD MAINT		Division/Group: SOUTH	
2. Operational Period: DAY SHIFT 0730-1930						
Date/Time From: 05/29/2017 0730 MON		Date/Time To: 05/29/2017 1930 MON				
4. Operations Personnel						
PLANNING OPERATIONS CHIEF		TRENT INGRAM		OPERATIONS CHIEF		RICK DOLAN FRED BOEHM, BRYCE THOMAS (T)
BRANCH DIRECTOR		BOB LITTLE		DIVISION/GROUP SUPERVISOR		ANDREW BRANSON
SAFETY		LARRY GRUBBS ROB THORP (T); LUCAS MINTON (T)		AIR TACTICAL GROUP SUPERVISOR		MARK NUNEZ KEN MCLAUGHLIN
5. Resources Assigned this Period						
Strike Team / Task Force / Resource Designator		LWD	Leader	Number Persons	Drop Off PT./Time	Pick Up PT./Time
TFLD O-654		05/31	JOSH CANTRELL	1	EAST CAMP/0730	EAST CAMP/1930
HEQB O-599		06/01	MARK BASS	1	EAST CAMP/0730	EAST CAMP/1930
GRD2 - WFS 6198TE E-136		06/04	JUSTIN BARBER	1	EAST CAMP/0730	EAST CAMP/1930
HEQB O-600		05/29	SHANE FEIGHTNER	1	EAST CAMP/0730	EAST CAMP/1930
GRD2 - CORNELIUS FARMS E-941		05/31	ALEX CORNELIUS	1	EAST CAMP/0730	EAST CAMP/1930
WTS2 -AZ-DSY #146 E-643		05/29	RANDY KENNEDY	1	EAST CAMP/0730	EAST CAMP/1930
TFLD O-615		05/29	CHAD D STOVER	1	EAST CAMP/0730	EAST CAMP/1930
STEQ O-798		06/10	JEROMY WILSON	1		
EXCAVATOR T3 - VIN# GXHFE E-622		06/08	BUCK TODDENBERRY	1	EAST CAMP/0730	EAST CAMP/1930
DOZER T3 - VIN# 302873 E-623		06/08	KELLY PITTMAN	1	EAST CAMP/0730	EAST CAMP/1930
8. Division/Group Communication Summary						
Function	Channel	RX Frequency N/W	RX Tone/NAC	TX Frequency N/W	TX Tone/NAC	Mode
COMMAND	ZONE 2 / CH 8	159.2700N	156.7	151.1000N	123.0	A
AIR TO GROUND	ZONE 2 / CH 4	169.2000N	NONE	169.2000N	NONE	A
TACTICAL	ZONE 2 / CH 10	168.3500N	NONE	168.3500N	NONE	A
AIR TO GROUND	ZONE 2 / CH 14	166.6750N	NONE	166.6750N	NONE	A
AIR TO GROUND	ZONE 2 / CH 15	169.1500N	NONE	169.1500N	NONE	A
AIR GUARD	ZONE 2 / CH 16	168.6250N	NONE	168.6250N	110.9	A
9. Prepared By (Resource Unit Leader)			Approved By (Planning Section Chief)		Date	Time
SHAUN STEWART			JOE BISHOP, PSC2 (T)		05/28/2017	1800

Division/Group Assignment List (ICS 204 WF)

1. Incident Name:			3.			
WEST MIMS			Branch:		Division/Group:	
2. Operational Period: DAY SHIFT 0730-1930			ROAD MAINT		SOUTH	
Date/Time From: 05/29/2017 0730	MON	Date/Time To: 05/29/2017 1930	MON			
4. Operations Personnel						
PLANNING OPERATIONS CHIEF		TRENT INGRAM		OPERATIONS CHIEF		
				RICK DOLAN FRED BOEHM, BRYCE THOMAS (T)		
BRANCH DIRECTOR		BOB LITTLE		DIVISION/GROUP SUPERVISOR		
				ANDREW BRANSON		
SAFETY		LARRY GRUBBS ROB THORP (T); LUCAS MINTON (T)		AIR TACTICAL GROUP SUPERVISOR		
				MARK NUNEZ KEN MCLAUGHLIN		
5. Resources Assigned this Period						
Strike Team / Task Force / Resource Designator		LWD	Leader	Number Persons	Drop Off PT./Time	Pick Up PT./Time
6. Control Operations/Work Assignments:						
Task						
<ul style="list-style-type: none"> • Assess access roads to fire perimeter; repair or maintain as necessary in accordance with priority list provided by Operations Section Chief. • Provide adequate signage for traffic safety. • Assess single lane bridges and culverts for safety and maintenance needs. 						
Purpose						
<ul style="list-style-type: none"> • To keep adequate vehicular access to the fire perimeter. 						
End State						
<ul style="list-style-type: none"> • Access roads are in a safe and travel worthy condition. 						
7. Special Instructions:						
Check in and out with Division Supervisor when moving between divisions.						
Medical Emergency Channel: Command						
ETA for Ambulance to Scene:						
Air: 20-30 mins						
Ground: 10-15 mins Paved road only.						
IWI - IC or approved person will use Channel 16 (Air Guard) for contact with air ambulance.						
Air Ambulance landing zone to be determined by IWI - IC.						
Utilize engines to provide dust abatement, as needed, prior to air ambulance landing.						
8. Division/Group Communication Summary						
Function	Channel	RX Frequency N/W	RX Tone/NAC	TX Frequency N/W	TX Tone/NAC	Mode
COMMAND	ZONE 2 / CH 8	159.2700N	156.7	151.1000N	123.0	A
AIR TO GROUND	ZONE 2 / CH 4	169.2000N	NONE	169.2000N	NONE	A
TACTICAL	ZONE 2 / CH 10	168.3500N	NONE	168.3500N	NONE	A
AIR TO GROUND	ZONE 2 / CH 14	166.6750N	NONE	166.6750N	NONE	A
AIR TO GROUND	ZONE 2 / CH 15	169.1500N	NONE	169.1500N	NONE	A
AIR GUARD	ZONE 2 / CH 16	168.6250N	NONE	168.6250N	110.9	A
9. Prepared By (Resource Unit Leader)			Approved By (Planning Section Chief)		Date	Time
SHAUN STEWART			JOE BISHOP, PSC2 (T)		05/28/2017	1800

Division/Group Assignment List (ICS 204 WF)

1. Incident Name:				3.			
WEST MIMS				Branch:		Division/Group:	
2. Operational Period: DAY SHIFT 0730-1930				ROAD MAINT		WEST	
Date/Time From: 05/29/2017 0730 MON		Date/Time To: 05/29/2017 1930 MON					
4. Operations Personnel							
PLANNING OPERATIONS CHIEF		TRENT INGRAM		OPERATIONS CHIEF		RICK DOLAN BUCK KLINE	
BRANCH DIRECTOR		BOB LITTLE		DIVISION/GROUP SUPERVISOR		DAVID SMITH	
SAFETY		LARRY GRUBBS ROB THORP (T); LUCAS MINTON (T)		AIR TACTICAL GROUP SUPERVISOR		MARK NUNEZ KEN MCLAUGHLIN	
5. Resources Assigned this Period							
Strike Team / Task Force / Resource Designator		LWD	Leader	Number Persons	Drop Off PT./Time	Pick Up PT./Time	
STEQ O-795		06/10	TROY L HELMS JR	1			
HEQB O-647		05/30	BRANDON CREECH	1	ICP/0730	ICP/1930	
GRD2 - MOORE'S - E-641		05/29	ERIC MOORE	1	ICP/0730	ICP/1930	
HEQB O-645		05/29	JONATHAN MCDUFFEY	1	ICP/0730	ICP/1930	
GRD1 - VIN# 625863 E-866		06/14	BRIAN JENKINS	1	ICP/0730	ICP/1930	
HEQB O-688		05/31	GENE PHILLPS	1	ICP/0730	ICP/1930	
DOZ2 - TIPTON & YOUNG E-506		06/04	ETHAN TIPTON	2	ICP/0730	ICP/1930	
HEQB O-631		06/03	SCOTT BURGHARDT	1	ICP/0730	ICP/1930	
TPL2 TIPTON & YOUNG E-509		06/06		1	ICP/0730	ICP/1930	
SOF2 O-492		06/10	TIMOTHY OLIVERIUS	1	ICP/0730	ICP/1930	
8. Division/Group Communication Summary							
Function	Channel	RX Frequency N/W	RX Tone/NAC	TX Frequency N/W	TX Tone/NAC	Mode	
COMMAND	ZONE 2 / CH 7	159.2700N	156.7	151.1000N	100.0	A	
AIR TO GROUND	ZONE 2 / CH 4	169.2000N	NONE	169.2000N	NONE	A	
TACTICAL	ZONE 2 / CH 10	168.3500N	NONE	168.3500N	NONE	A	
AIR TO GROUND	ZONE 2 / CH 14	166.6750N	NONE	166.6750N	NONE	A	
AIR TO GROUND	ZONE 2 / CH 15	169.1500N	NONE	169.1500N	NONE	A	
AIR GUARD	ZONE 2 / CH 16	168.6250N	NONE	168.6250N	110.9	A	
9. Prepared By (Resource Unit Leader)			Approved By (Planning Section Chief)			Date	Time
SHAUN STEWART			JOE BISHOP, PSC2 (T)			05/28/2017	1800

Division/Group Assignment List (ICS 204 WF)

1. Incident Name:			3.			
WEST MIMS			ROAD MAINT		Division/Group: WEST	
2. Operational Period: DAY SHIFT 0730-1930						
Date/Time From: 05/29/2017 0730 MON		Date/Time To: 05/29/2017 1930 MON				
4. Operations Personnel						
PLANNING OPERATIONS CHIEF		TRENT INGRAM		OPERATIONS CHIEF		RICK DOLAN BUCK KLINE
BRANCH DIRECTOR		BOB LITTLE		DIVISION/GROUP SUPERVISOR		DAVID SMITH
SAFETY		LARRY GRUBBS ROB THORP (T); LUCAS MINTON (T)		AIR TACTICAL GROUP SUPERVISOR		MARK NUNEZ KEN MCLAUGHLIN
5. Resources Assigned this Period						
Strike Team / Task Force / Resource Designator		LWD	Leader	Number Persons	Drop Off PT./Time	Pick Up PT./Time
6. Control Operations/Work Assignments:						
<p>Task</p> <ul style="list-style-type: none"> • Assess access roads to fire perimeter; repair or maintain as necessary in accordance with priority list provided by Operations Section Chief. • Provide adequate signage for traffic safety. • Assess single lane bridges and culverts for safety and maintenance needs. <p>Purpose</p> <ul style="list-style-type: none"> • To keep adequate vehicular access to the fire perimeter. <p>End State</p> <ul style="list-style-type: none"> • Access roads are in a safe and travel worthy condition. 						
7. Special Instructions:						
<p>Check in and out with Division Supervisor when moving between divisions.</p> <p>Medical Emergency Channel: Command ETA for Ambulance to Scene: Air: 20-30 mins Ground: 10-15 mins Paved road only. IWI - IC or approved person will use Channel 16 (Air Guard) for contact with air ambulance. Air Ambulance landing zone to be determined by IWI - IC. Utilize engines to provide dust abatement, as needed, prior to air ambulance landing.</p>						
8. Division/Group Communication Summary						
Function	Channel	RX Frequency N/W	RX Tone/NAC	TX Frequency N/W	TX Tone/NAC	Mode
COMMAND	ZONE 2 / CH 7	159.2700N	156.7	151.1000N	100.0	A
AIR TO GROUND	ZONE 2 / CH 4	169.2000N	NONE	169.2000N	NONE	A
TACTICAL	ZONE 2 / CH 10	168.3500N	NONE	168.3500N	NONE	A
AIR TO GROUND	ZONE 2 / CH 14	166.6750N	NONE	166.6750N	NONE	A
AIR TO GROUND	ZONE 2 / CH 15	169.1500N	NONE	169.1500N	NONE	A
AIR GUARD	ZONE 2 / CH 16	168.6250N	NONE	168.6250N	110.9	A
9. Prepared By (Resource Unit Leader)			Approved By (Planning Section Chief)		Date	Time
SHAUN STEWART			JOE BISHOP, PSC2 (T)		05/28/2017	1800

AIR OPERATIONS SUMMARY (ICS220)

Prepared by: John Bragg

Prepared Date: 5/28/2017

Prepared Time: 17:00

1. INCIDENT NAME: West Mims	2. OPS PERIOD DATE: 5/29/17	START TIME: 0800	END TIME: 2030	SUNRISE: 0626	SUNSET TIME: 2024 (Folkston)
3. REMARKS Safety Notes: Hazards (SEE AND AVOID GENERAL AVIATION TRAFFIC AND AERIAL HAZARDS) -Maintain clear communications; confirm that drop location is clear; ground personnel state: "Clear to Drop" -Incident Aircraft conduct flight following with Pogo Helibase when ATGS is not up. -Aerial Ignition Group: Helicopter 1FW with PLDO; FIRB, Jon King. -CEASE ALL FIRE OPERATIONS AT SUNSET -ALL AIRCRAFT SQUAWK 1255 ORDERING/FLIGHT REQUESTS -Request Helicopter water drops through Air Attack -Request Tankers/Retardant through Air Attack -Requests for Reconnaissance missions must go through Operations for pre-approval E-MAIL AIRCRAFT COSTS DAILY AT END OF SHIFT TO: al_d2011@yahoo.com			4. READY ALERT AIRCRAFT: N-132BH N-351FW		5. TFR: (A-160) 7/1205; Surface to 3500' MSL; See NOTAM for full description. Frequency 120.8500 Expires 6/06/17 @ 2100hrs.

6. PERSONNEL	NAME	PHONE #	7. FREQUENCIES	AM	FM	8. FIXED-WING- Type/ Make-Model/ N#/ Base
AOBD	John Bragg Air Ops Desk	423-483-2798 912-637-5133	A/A - Fixed Wing (A-17) A/A - Rotor / TFR (A-37) A/G (Request) (A-111) A/G 66 (Primary) (A-5) A/G 72 (Secondary) (A-16)	120.3500 120.8500	 169.2000 166.6750 169.1500	AIR ATTACK: ATGS – Mark Nunez / AC690 / N690RA / LCQ 805-975-5227 ATGS – Ken McLaughlin / Kodiak / N420Q / LCQ 813-997-0317
ASGS	Al Driesbach	805-703-0649				MMA -- Craig Hall/ Pilatus12 /N328SF/VQQ 970-799-1231
HEB2 - Pogo HEB2(T) - Pogo HEB1 - Lake City	Marc 'Boomer' Rudkin David Aldrich Brad Nelson	307-287-0440 520-490-8638 559-349-6793	Deck/TOLC (Pogo) Deck (Lake City)		168.0500 163.100	TANKERS – As available (T-02) BAE146 / N474NA / LCQ (Off Mondays) (T-164) RJ-85A / N374AC / LCQ (Off Thursdays)
	Pogo Helibase	912-496-4415				
	Lake City Helibase	561-512-6333	Air Guard		168.625 (110.9)	

9. HELICOPTER Remarks Box Legend: C=Cargo P=Passengers B=Bucket SN=Snorkel R=Rappel H=Hoist SH=Short Haul ME=Medical Evacuation/ Extraction Exu=Exclusive Use

FAA N#	T Y	MAKE/ MODEL	BASE	START	READY to FLY	REMARKS	FAA N#	T Y	MAKE/ MODEL	BASE	START	READY to FLY	REMARKS
132BH	3	AS350 B3	Pogo (3GE1)	0800	0830	P, B Exu	13FH	1	UH-60A	Lake City (LCQ)	0800	0830	B Exu
351FW	3	AS350 B2	Pogo (3GE1)	0800	0830	P, B Exu	612CK (702)	1	SH-3H / S-61	Lake City (LCQ)	0800	0830	SN * <u>On Loan</u>
471CH	1	CH-47D	Lake City (LCQ)	0800	0830	SN Exu	137BH	1	S70A-27	Lake City (LCQ)	0800	0830	B * <u>On Loan</u>
611CK	1	SH-3H / S-61	Lake City (LCQ)	0800	0830	SN Exu	472CH	1	CH-47D	Lake City (LCQ)	0800	0830	SN * <u>On Loan</u>

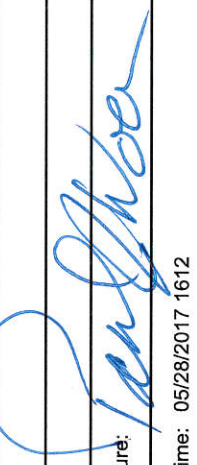
10. Mission Request

--

INCIDENT RADIO COMMUNICATIONS PLAN (ICS 205)

1. Incident Name: WEST MIMS		2. Date/Time Prepared: Date: 05/28/2017 Time: 1612		3. Operational Period: DAY SHIFT 0730-1930	
		Date/Time From: 05/29/2017 0730		Date/Time To: 05/29/2017 1930	
		MON		MON	

4. Basic Radio Channel Use:											
Zone Group	Ch #	Function	Channel Name/Trunked Radio System Talkgroup	Assignment	RX Freq	RX Tone/NAC	TX Freq	TX Tone/NAC	Mode (A, D, or M)	Remarks	
2	1	TACTICAL	V FIRE 21	INITIAL ATTACK	154.2800N	NONE	154.2800N		A	INITIAL ATTACK W/ OSCEOLA NF	
2 WEST	2	COMMAND	S. FOSTER	DIV D	159.1200N	NONE	151.3700N	100.0	A		
2 EAST	3	COMMAND	CORNELIA	DIV M/N,O	159.1200N	NONE	151.3700N	82.5	A	STAGING, ROAD MAINT EAST	
2 ALL DIVISIONS	4	AIR TO GROUND	A/G REQUEST	ALL DIVISIONS	169.2000N	NONE	169.2000N	NONE	A	BY REQUEST ONLY	
2	5	COMMAND	GFC EDDY	GA FORESTRY	159.4650N	NONE	151.1450N	123.0	A	GA FORESTRY ONLY	
2 EAST	6	COMMAND	GA BEND	UNASSIGNED	159.2700N	156.7	151.1000N	156.7	A		
2 NORTH	7	COMMAND	FARGO RPT	DIV F	159.2700N	156.7	151.1000N	100.0	A	IA WEST, IA EAST, ROAD MAINT WEST	
2 SOUTH	8	COMMAND	BAKER RPT	DIV A, B, C, Y, Z	159.2700N	156.7	151.1000N	123.0	A	IA WEST, IA EAST, ROAD MAINTENANCE SOUTH	
2	9	TACTICAL	COMPACT	DIV C, M/N, Y	159.2850N	NONE	159.2850N	156.7	A		
2	10	TACTICAL	REFUGE TAC 1	STAGING	168.3500N	NONE	168.3500N	NONE	A	DIV Z, ROAD MAINT EAST, WEST, SOUTH	
2	11	TACTICAL	OSCEOLA PROJECT	DIV O, IA WEST	163.7125N	NONE	163.7125N	NONE	A		
2	12	TACTICAL	FFS 199	DIV A, IA EAST	159.4425N	NONE	159.4425N	NONE	A		
2	13	TACTICAL	FFS 200	DIV B, DIV D, DIV F	159.4125N	NONE	159.4125N	NONE	A		
2 ALL DIVISIONS	14	AIR TO GROUND	AIR TO GRD 66	A/G PRIMARY	166.6750N	NONE	166.6750N	NONE	A	AIR / GROUND PRIMARY	
2 ALL DIVISIONS	15	AIR TO GROUND	AIR TO GRD 72	A/G SECONDARY	169.1500N	NONE	169.1500N	NONE	A	AIR / GROUND SECONDARY	
2 ALL DIVISIONS	16	AIR GUARD	AIR GUARD	ALL DIVISIONS	168.6250N	NONE	168.6250N	110.9	A	EMERGENCY AIRCRAFT COMMUNICATIONS	

5. Special Instructions: WEST MIMS DAY PLAN	
6. Prepared By (Communications Unit Leader)	Name: PAUL NOA, COM-L-T
ICS 205	IAP Page
Signature: 	
Date/Time: 05/28/2017 1612	

PHONE LIST WEST MIMS FIRE

Position	Name	Phone Number	Position	Name	Phone Number
UNIFIED COMMAND			PLANNING Continued		
NIMO IC	Mike Quesinberry	540-230-1262	Tech. Spec. Air Res. Adv.	Sean Luchs	240-499-6654
Southern States IC (t)	Keith Mousel	352-442-2891	Resource Advisor	Rocky Chesser	912-276-3232
Southern States IC	Sam LeNeave	850-228-7778	NWR Resource Advisor	Howard McClough	912-276-0552
Liason Officer	Daniel Stanley	850-661-1674	Field Observer Lead	Lew Becker	541-815-2909
Liason Officer	Mark Allen Dozier	478-251-4015	Field Observer	Brad Schuette	530-351-5306
Liason Officer	Paul Stevens	252-216-6316	Field Observer	Reed Heckly	509-690-1242
			Field Observer	Evan Haugan	470-366-6307
PUBLIC INFORMATION	Land Line	912-637-5108	Field Observer	Brian Boatman	209-559-8184
Information Desk		904-452-4627	Field Observer	Jason Kanmann	775-815-8050
NIMO Public Information	Judith Downing	530-908-5128	Field Observer	Happy Hoppe	530-921-4431
Public Information	Annaleasa Winter	904-705-3931	Training Specialist	David Hunt	863-221-6146
Refuge Public Info	Susie Heisey	912-286-3110	Human Resources Spec.	Larry Sandoval	229-561-3477
AGENCY REPRESENTATIVES			Info. Tech. Sys. Spec.	Randy Fountain	470-366-6310
Refuge FMO	Reese Kerbow	912-276-0167	Info. Tech. Sys. Spec.	Dean Groe	470-366-6311
Refuge AFMO	Reggie Forcine	912-614-4041	FINANCE	General	912-637-5109
Refuge Manager	Mike Lusk	912-390-2193	Incident Business Adv.	Carla Schamber	202-631-2254
DNR Agency Liaison	SGT. Patrick Dupree	404-694-5596	Finance Chief	Betty Palmiotto	850-408-6564
Ware Co EMA	Bill Parham	229-425-4549	Deputy Finance Chief	Dawn Crouch	352-206-5634
Clinch Co EMA	Will Joyce	912-520-8581	Comp/Claims	Brett Steffen	229-561-4378
Lanier Co EMA	Randy Patten	229-482-5070	Procurement	Tommy Price	863-661-4019
Charlton Co EMA	Bruce Young	912-390-2022	Time	Marci Glover	850-373-8254
Charlton Co Sheriff's Office	Inv. Clay Burnsel	912-276-2628			
Georgia EMA	Kristen Higgs	912-387-5490	Telephone lines at ICP		
NC-Forest Service	Robbie Perry	910-995-2572	Information/PIO		912-637-5132
Billy Estep	EMS Dir/Nassau Coun	904-813-3476	Information		912-637-5108
Baker Co EMA	Beck Parker	904-955-6454	Air Ops		912-637-5133
Columbia Co S.O.	Shayne Morgan	386-693-2248	Ordering		912-637-5107
Clinch CO Fire Chief	Danny Strickland	912-487-6493	Ordering		912-637-5136
PLANNING			Ordering Fax		912-637-5104
NIMO Plans Section Chief	Darrel Schwilling	404-805-3159	Supply		912-637-5138
Planning Section Chief ICP	Duane Durgee	352-278-0446	Ground Support		912-637-5105
Planning Section Chief (t)	Joe Bishop	352-516-9767	Finance		912-637-5109
Resource Unit Leader	Shaun Stewart	352-428-7453	Finance Fax		912-637-5110
Resource Unit Leader	Peach Keller	303-570-2059	Operations		912-637-5112
Resource Unit Leader (t)	Fred Noack	360-801-8471	Plans FAX		912-637-5115
Demob Unit Leader	Bobby Cahal	912-637-5113	Plans / Checkin		912-637-5137
Demob Unit Leader (t)	Meredith Butcher	541-806-0822	Demob		912-637-5113
Status Check-In	Jessica Valdez	817-915-9413	Communications		912-637-5116
Status Check-In	Stacey Clemenson	208-290-4669	Telephone lines at Eastside Camp		
Document Unit Leader	Teri Parvin	970-445-0038	Operations		912-496-2278
Situation Unit Leader	Scott Crosby	352-275-4332	Supply		912-496-3116
Situation Unit Leader	Stuart Coombs	470-366-6309	Communications		912-496-2293
Situation Unit Leader	Stuart Coombs	936-827-4233	Medical		912-496-2289
Geo Info System Spec.	Clint Roberts	601-408-4226			
Geo Info System Spec.	Domonic Marcanio	850-380-1656			
Geo Info System Spec.	Brendan Mullholland	352-255-9094			
Fire Behavior Analyst	Bradley Smith	470-366-6313			
Fire Behavior Analyst(t)	Andrew Taylor	541-219-1205			Updated 5/28/17
Fire Behavior Analyst(t)	Mike Ward	404-909-1196			
Incident Meteorologist	Scott Kennedy	252-269-9497			Page 1 of 2

PHONE LIST WEST MIMS FIRE

Position	Name	Phone Number	Position	Name	Phone Number
OPERATIONS	Land Line	912-637-5112	SAFETY		
NIMO Ops	Kyle Smith	540-855-0233	IPA	Gene Madden	404-805-7970
Lead Ops	Rick Dolan	352-353-5101	Safety Officer	Larry Grubbs	850-228-7755
West Field Lead Ops	Buck Kline	912-678-2694	Safety Officer	Larry Connell	352-303-3921
East Field Lead Ops	Fred Boehm	954-347-8071	Safety Officer (t)	Robert Thorp	719-207-0096
Planning Ops	Trent Ingram	229-726-0285	Safety Officer (t)	Lucas Minton	615-202-3264
Planning Ops (t)	Phil Daniels	720-315-4240	LOGISTICS		
Branch I	Lance Delgado	541-639-2610	NIMO Logistics Chief	Sally Browning	404-805-5063
Division B	Jerry Van Dyme	503-580-8130	Logistics Chief East Camp	Jim Peters	352-942-7218
Division C	Chris Roberts	912-213-3138	Logistics Section Chief (t)	David McVay	850-625-5142
Division D	Walter Bowers	850-625-6630	Facilities Unit Leader	Dennis Evans	478-957-9709
Division F	Jason Forthofer	406-207-5587	Supply Unit Leader	Travis Shidal	
Division F	Jeff Coburn (t)	541-207-4066	East Camp Grd Support	Douglas Crocker	352-235-2352
IA Group East	Greg Buckalew	252-475-8012	Ground Spt Unit Ldr	Charles Weathers (nights)	
IA Group (t)	Arturo Gasdik	707-834-8205	Ground Spt Unit Ldr	Mike Stigler	386-837-2289
Road Maint Group	Candice Kutrosky	719-651-0669	Ground Spt Unit Ldr	Glen Simmons	386-855-0379
Clinch EMS		229-569-9280	East Camp Grd Support	Mike Nelson	484-880-7494
Branch III	Marc Crain	503-307-9023	Ordering Manager	Mark McClellan	478-733-2606
Division M/N	Butch Galbraith	850-973-7778	Food Unit Leader	Steve Marshall	352-464-2721
Division M/N (t)	Chris Rankin	307-359-1997	Security Manager	Greg Blanks	912-346-7367
Division O	Shawn Alexander	678-897-9137	Medical Unit Leader	Steve Russo	917-923-3980
Division O(t)	Michael Gue	305-338-6069	East Medical Unit Leader	Brad Burns	470-366-6318
IA Group West	Ron Calhoun	478-290-9755	West Medical Unit Leader	Travis McGowen	470-532-8809
STAM Eastside Camp	Chris Rudd	541-660-0634	Communications Unit	24 Hour	912-637-5116
Golden Isle EMS		229-300-0619	Communications Unit Ldr	Charles Radcliff	386-330-4162
Branch IV	Mike Work	904-705-3926	Communications Unit Ldr (t)	Paul Noa	850-276-5428
Division A(t)	Jeff Bostwick	575-694-0280	Incident Comm. Mgr.	Gavin Walter	352-634-1174
Division Y	Randy Gregory	850-519-3330	East Camp Communications		470-366-6306
Division Z	Jason Longfellow	386-212-9871	LAND OWNERS AND OTHER CONTACTS		
Refuge Advisor	Reggie Forcine	912-614-4041	Steve Davis	Am Forest Mgmt	912-614-1828
Florida Contingency	Keith Osteen		Allen C. Cross	Rayonier US Forest	904-796-7929
FWS Contingency	Rocky Chesser	912-276-3232	Dave Gather	Okie Electric	912-390-9755
FFS Contingency	John Raulerson	386-292-5652	Chad Edwards	N Fork Southern RR	540-797-9918
FFS Contingency	Andy Lamborn	383-365-4441	Bryan Robbins	CSX RR	912-387-3910
Okefenokee EMS		912-288-5703	Steve Magnolia	FD Coordinator	904-537-5853
STAM Bethea	Adam Dummer	831-238-0991	Terri Jenkins	FWS FD/VFD Contact	912-313-4225
Road Maint Branch	Bob Little	231-690-6426	Ned Neenan	Legacy Forestry	352-317-0738
West	David Smith	850-686-2970	Ken Zaydel	Social Circle FD	404-205-2738
East	Chris Craddy	520-275-6747	Royce Proctor	OKE Electric Coop	912-282-6873
South	Andrew Branson	530-598-4126		Okefenokee NWR	912-496-7366
			Adam McCullough	NWR IA Duty Off	912-496-4177
AIR OPERATIONS			SFSP	Bryan Grey	912-637-5274
AOBD	John Bragg	423-483-2798	GOAL	Jim Barrett	229-356-1993
ATGS	Ken McLaughlin	813-997-0317	SOPL	Mark Hale	406-861-4876
ATGS	Mark Nunez	805-975-5227	LTAN (t)	Wesley Hall	575-973-0726
ASGS	Al Driesback	805-703-0649			
HEB2-Pogo	Marc "Boomer" Rudkin	307-287-0440			
HEB1 - Lake City	Brad Nelson	559-349-6793			Updated 5/28/17
Pogo Helibase (Hardline)		912-496-4415			
Lake City Helibase (Hardline)		561-512-6333			Page 2 of 2

HEALTH AND SAFETY MESSAGE

Safety Is a Choice You Make

INCIDENT: West Mims Fire

DATE: Monday, May 29, 2017

Major Hazards & Risks Driving , Fire Behavior, Unburned Fuel

Driving: *Driving is one of the most hazardous tasks that we perform when assigned to fires. Because of the fact that we perform the task literally hundreds of times in the course of our daily lives we tend to take it for granted. Based on recent accident trends, vehicle accidents are the source of more deaths and serious injuries to wildland firefighters than any other single cause. Try and recognize your own driving habits and strive to constantly evaluate and improve your driving techniques.*

Fire Behavior: *Potential for Significant Fire Behavior exists over the fire area today due to higher wind gusts, dry fuels, and lower relative humidity's. Make sure you have **LCES** in place before engaging. Set Management Action Points and be prepared to disengage early if necessary. Stay aware out there.*

UNBURNED FUEL BETWEEN YOU AND THE FIRE: *It is important for firefighters to recognize "unburned fuel between you and the fire". Refer to Watch out Situation #11, sometimes it is not possible or practical for direct attack on a fire. Make sure before attempting indirect attack to assess unburned fuel between yourself and the fire.*

Driving is one of the most hazardous tasks that we perform!!



VIII C-1

CONDUCTING SAFE OPERATIONS NEAR HAZARD TREES

Personnel should carry out a hazard assessment of any fire site that has potential for hazard trees.

Things to consider when assessing the potential hazards of trees are:

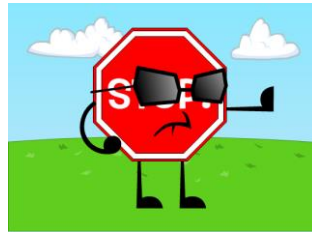
- Area and trees have been burning for an extended period.
- High-risk tree species (those that are known for rot and shallow root systems) are in the area.
- Numerous downed trees
- Dead or broken tops and limbs overhead
- Accumulation of downed limbs
- Absence of needles, bark, or limbs
- Leaning or hung-up trees
- Over mature trees with heavy cone loads on the tops
- If the root system has been burned and/or exposed due to ground and surface fire.
- Ash pits spotted throughout the area.

Southern Area State IMT Safety Officers: Larry, Larry, Rob(t), Luke(t)



HUMAN RESOURCE MESSAGE

STOP, THINK, TALK before ACTING !



Many times we skip right past the STOP sign.

Ever had a "slip of the tongue," later thinking I wish I could have taken that back. I wish I could reel back those hurtful words.

Inappropriate comments are difficult to identify because what is offensive to one person may be humorous or neutral to another. The key word is "Offensive".

Keep in mind, behavior that is cruel, blatant, or potentially destructive should not be tolerated just because no one complained.

I'm here to listen and help. And if I can't help you, I'll help you find someone who can.

Trivia of the day: February 1865 is the only month in recorded history to not have a full moon.

Incident Human Resource Specialist: Larry Sandoval

MEDICAL PLAN (ICS 206 WF)

1. Incident/Project Name	2. Operational Period
West Mims Fire	Date/Time 5/29/17 0730 - 1930

3. Ambulance Services			
Name	Complete Address	Phone	Advanced Life Support (ALS) Yes No
Clinch County EMS	1050 Valdosta Hwy Homerville Ga	229-569-9280	YES
Golden Isle EMS	210 West Park Ave. Valdosta Ga	229-300-0619	YES
Okefenokee EMS	611 Riverside Ave. Waycross Ga	912-288-5703	YES

4. Air Ambulance Services		
Name	Phone	Type of Aircraft & Capability
Air Methods	888-763-1010	AS 350 with night vision capabilities
Air Evac	888-269-6006	206 L1 + with night vision capabilities
Trauma	800-223-4878	Bell 407 & EC153 both with night vision capabilities


5. Hospitals								
Name Complete Address	GPS Datum – WGS 84 Coordinate Standard Degrees Decimal Minutes DD° MM.MMM' N - Lat DD° MM.MMM' W - Long		Travel Time Air Gnd		Phone	Helipad Yes No		Level of Care Facility
	Lat:	Long:	mins	mins		<input type="checkbox"/>	<input type="checkbox"/>	
Memorial Satilla Health 1900 Teveau St. Waycross GA 31501	N 31' 13.452	W 82' 20.875	15	45	912-283-3030	<input checked="" type="checkbox"/>	<input type="checkbox"/>	Level III
	VHF:							
Clinch Memorial 1050 Valdosta Hwy Homerville Ga 31634	N 31' 01.975	W 82' 45.850	20	30	912-487-5211	<input checked="" type="checkbox"/>	<input type="checkbox"/>	Level IV
	VHF:							
Ed Frazier Hospital N. 3 rd Street MacClenny Fl 32036	N 30' 28.482	W 82' 11.896	15	45	904-259-3151	<input checked="" type="checkbox"/>	<input type="checkbox"/>	Level IV
	VHF:							
Shands Jacksonville 655 West 8 th Street Jacksonville Fl 32209	N 30' 20.890	W 81' 39.862	45	90	904-224-0411	<input checked="" type="checkbox"/>	<input type="checkbox"/>	Level I Trauma Center
	VHF:							
UF Shands Burn Center 1600 SW Archer Rd. Gainesville Fl 32610	N 29' 38.648	W 82' 21.189	45	105	352-265-8932	<input checked="" type="checkbox"/>	<input type="checkbox"/>	Burn Center
	VHF:							

IWI IC Responsibilities:

- Take charge of the scene – inform the Division Supervisor and Communications that you are the IWI IC and establish radio communications
- Assign or begin patient assessment (9 Line) and first aid.
- Determine patient transportation through consultation with line medical personnel and Medical Unit Leader.
- Order transportation resources through Communications as early as possible.
- Notify Communications as resources arrive and any patient status changes.
- Names of injured or deceased individuals will not be transmitted on the radio.
- Initiate documentation for future investigation; if a line safety officer is available, assign them to lead documentation.
- Conduct an After Action Review to determine successes, areas to improve and lessons learned

MEDICAL PLAN (ICS 206 WF)

6. Division Branch Group	
DAY MEDIC	
Division A - Martin Carrillo-EMPF	619-933-5546-Channel-8 COMMAND
Division B - Coby Saurey-EMPF	470-366-6302-Channel-8-COMMAND
Division C - Colin Stenhouse EMPF	470-366-6308-Channel-8-COMMAND
Division D - Rodney Schmidt EMPF	470-366-6317-Channel-2-COMMAND
Division F - Lionel Van Gorp - EMPF	470-532-8799-Channel-7-COMMAND
Division M/N - Stephen Wolfstich- EMPF	520-508-9807-Channel-3-COMMAND
Division O - Bryan Warner- EMPF	470-366-6263-Channel-3-COMMAND
Division Y - Wade Allen - EMPF	928-240-0106-Channel -8-COMMAND
Division Z - John Heck - EMPF	602-571-2505-Channel -8-COMMAND
Medical Station WEST	
MEDL office - Jill Hempelman- EMPF	623-986-1587
Medical Station EAST	
MEDL Station - Mike Fincham- EMPF	530-925-1267
Branch I	
Clinch County EMS Ambulance - ALS - 0730-1930	470-532-8806
Branch III	
Golden Isle Ambulance - ALS - 0730-1930	912-602-9224
Branch IV	
Okefenokee EMS Ambulance - ALS - 0730-1930	470-532-8797

7. Prepared By (Medical Unit Leader)	8. Date/Time	9. Reviewed By (Safety Officer)	10. Date/Time
Stephen Russo MEDL (917) 923-3980 West Medical Travis McGowen MEDL (T) 470-532-8809 East Medical Brad Burns MEDL (T) 470-366-6318	5/28/17	Larry Grubbs SOF1 850-228-7755 	5/28/2017

WEST MIMS FIRE MEMORIAL DAY OBSERVATION

On Memorial Day we honor the more than one million men and women who died while serving in the US military.

In traditional observance, the flag is raised briskly to full-staff and then solemnly lowered to the half-staff. At noon it is raised to full-staff and remains there until it is taken down at dusk.

The half-staff position remind us of those who gave their lives. At the noontime raising to full-staff in their memory, we resolve that their sacrifice not be in vain,

In December 2000, the US Congress passed and the president signed into law “The National Moment of Remembrance Act,” which encourages all Americans to pause wherever they are at 3 pm local time on Memorial Day for a minute of silence to remember and honor those who have died serving the country.

The Southern States Type 1 Incident Management Team joins the residents of Fargo and surrounding communities in remembering and honoring the local residents who have given their lives in their country’s service.



Crosses line the main street of Fargo, GA, to honor local men and women who died serving the country.

WEST MIMS FIRE - RESTAURANT SERVICE

Saturday, May 27, 2017

Breakfast \$11.00 Lunch \$12.00 Dinner \$23.00

Valdosta:

- Waffle House (S193) – 1819 W. Hill Dr., Valdosta, GA 31601 (229) 834-4907
- Mama Junes (S503) – 3286 Inner Perimeter Road, Valdosta, GA 31602 (229) 292-4491 (Hours: 1000-2130 Mon.-Sat., 1030-2000 Sun.)
- Cracker Barrel – 1195 St. Augustine Rd., Valdosta, GA (229) 244-5258
- Sonny's BBQ -1701 Norman Dr., Valdosta, GA (229)241-8090 (Mon.-Thurs. 11:00 a.m.-9:30 p.m.) (Fri.-Sun. 11:00 a.m.-10.00 p.m.)
- Chick-Fil-A – 1100 N St. Augustine Rd., Valdosta, GA (229)247-2625 (Mon.-Sat. 6:00 a.m. 10:00 p.m.) Closed on Sundays.

Fargo:

- Suwannee River Outfitters (S117) - P.O. Box 94 Fargo, Ga 31631
Store# (912) 637-5114 Bonnie Griffis (Owner) Cell# (229)460-6465
- Suwannee River Café (S118) - 190 Day Ave Fargo, GA 31631
Store# (912) 637-5307 Lorene Odom (Owner)

Lake City:

- Waffle House (S940) – 3639 W. US Hwy. 90 Lake City, FL 32055
Store# (385) 755-9066, Marilyn (Manager) (386) 344-2365
- Waffle House (S976) – 2963 W. US Hwy. 90 Lake City, FL 32055 Store# (386) 752-7742
- Huddle House (S1333) – Store# (386) 466-1144
- Sonny's BBQ – 3177 W. Hwy. 90, Lake City, FL 32055 (386) 752-1117
- Texas Roadhouse – 3039 W. Hwy. 90, Lake City, FL 32055 (386) 758-0074. (Sun.-Thurs. 11:00 a.m.-10:00 pm) (Fri.-Sat. 11:00 a.m.-11:00 pm)

Kingsland:

- Waffle House (S951) – 1201 East Kind Avenue, Kingsland, GA 31548
Store # (912) 729-5690 Allen Newcomb (Manager) (770) 330-4446
- Cracker Barrel – 1200 Boone Ave. (912) 576-1991 (Sun.-Thurs. 6:00 a.m. – 10:00 p.m.)(Fri. – Sat. 6:00 a.m. – 11:00 p.m.)
- Longhorn Steakhouse – 121 Crown Pointe Pkwy. (912) 576-2811 (Sun. – Thurs. 11:00 a.m. – 10:00 p.m.) (Fri. – Sat. 11:00 a.m. – 11:00 p.m.)

Waycross:

- Huddle House (S977) - 1010 Memorial Drive Waycross, GA 31501
Store# (912) 490-4353
- Hog-n-Bones – 1000 Memorial Drive, Waycross, GA 31501 (912) 285-3657 (Mon. –Sat. 6:00 a.m.-9:00 p.m.) Closed Sundays
- Applebee's – 1901 Memorial Dr. (912) 285-9359 (Sun. – Thurs. 11:00 a.m. - 10:00 p.m.) (Sat. – Sun 11:00 a.m. – 11:00 p.m.)

Homerville:

- Jerry J's (S716) – 89 E. Dame Avenue, Homerville, Ga 31634
Store# (912) 487-2232 Richard Crosby (Owner) (912) 286-6720
- Carters Fried Chicken (S741) – 277 Lakeview Drive Homerville, GA 31634
Store# (312) 487-2700 Lena Fitzgerald (912) 487-8402 Jeff Brown (912) 487-8004

Folkston:

- Okefenokee Adventures (S593) – 4159 Suwannee Canal Rd., Folkston, GA 31537
Store# (912) 496-7156 (temporarily closed)
- Okefenokee Restaurant (S596) – 1507 3rd Street, Folkston, Ga 31537
Store# (912) 496-3263 (Mon.-Sat. 7:00 a.m.-9:00 p.m.) Closed Sundays.
- Quick Chick (S595) – 107 2nd Street, Folkston, GA 31537 Store# (912) 496-7044 (Mon.-Sat. 10:00 a.m.-8:30 p.m.) Closed Sundays.

Macclenny, Fl:

- Chicken Coop 457 W. Macclenny Ave. (904) 259-3200 (Mon. – Wed. 11:00 a.m. – 8:00 p.m.) (Thurs. – Fri. 11:00 a.m. – 9:00 p.m.) (Closed Sat. & Sun.)
- Woody's Bar-B-Q 1482 S. 6th St. (904) 259-5800 (Fri. – Sat. 11:00 a.m. – 11:00 p.m.) (Sun. 11:00 a.m. – 9:00 p.m.) (Mon. – Thurs. 11:00 a.m. – 10:00 p.m.)

WEST MIMS DEMOBE

5/29/2017

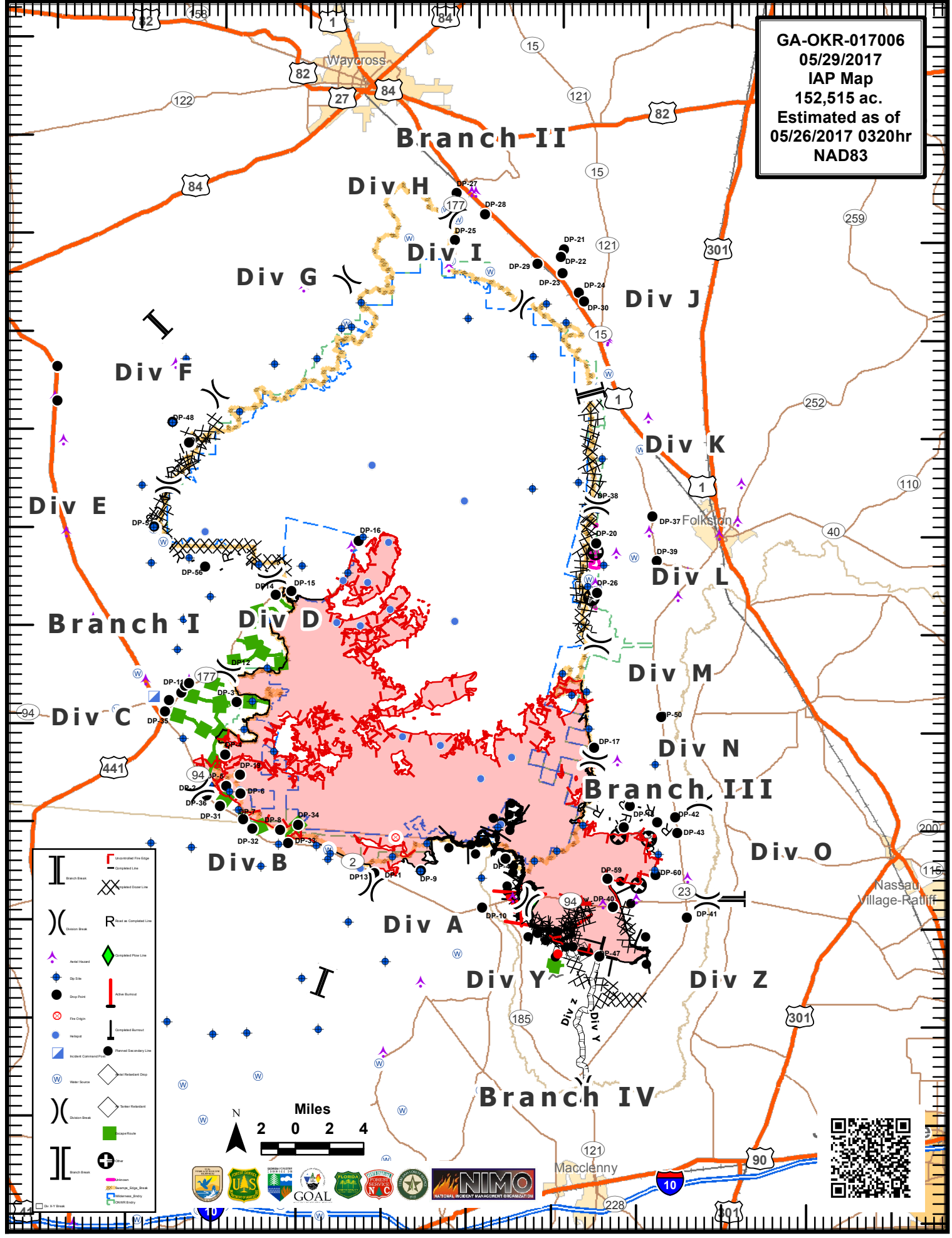
<u>Type</u>	<u>Request #</u>	<u>Name</u>	<u>Type</u>	<u>Request #</u>	<u>Name</u>	<u>Type</u>	<u>Request #</u>	<u>Name</u>
DRIV	E-73.1	CLARK	WTS2	E-600		BUYM	O-496.2	Jenkins
DRIV	E-74.1	WOOD	WTS2	E-588		BUYM	O-496.3	Loth
DRIV	E-75.1	TANNER	ENG6	E-761	OH-OHS-E62	BUYM	O-496.2	Thompson
ENGB	E-157.8	KNOWLES	ENG6	E-652	MS-MSR-E611	BUYM	O-496.6	McKelvey
ENGB	E-157.9	ROOKER	ENG6	E-157	Osceola	SOF2	O-452	Walter
FFT2	E-157.1	WASHINGTON				EQTR	O-599	Totten
WTOP	E-265.2	CORNITT	STEQ	O-603	Lico	FFT1	O-585	Harris
TTOP	E-508.4	POLLARD	STEQ	O-613	Gallagher	HEQB	O-601	Foreman
EQTR	O-559	TOTTEN	STOP	O-580	Seal	STEQ	O-602	Teigen
RADO	O-574	GOROSPE	STOP	O-733	Goosman	FIRB	E-447.1	Yancick
STOP	O-580	HARRIS	TFLD	O-592	Middleton	CRWB	E-447.2	Thivener
STEQ	O-602	TEIGEN	TFLD	O-595	Stephens	FFT2	E-447.3	Mackiewicz
PIO2	O-608	MCKENZIE	TFLD	O-596	Allman	ENGB	E-447.4	Freeman
RESL	O-611	WINSHIP	ENGB	E-656.1	Bennett	ENGB	E-447.5	Perez
RESL	O-612	TURNER	FFT2	E-656.2	Daughherty	FEMO	E-447.6	Forget
STEQ	O-613	GALLAGHER II	FFT2	E-656.3	Mosley	FEMO	E-447.7	Malone
SPUL	O-614	STILLER	TPOP	E-136.2	Parker	FFT2	E-761.2	Shuman
HMGB	O-480	Hunt	FFT2	E-761.5	Mulligan	FFT2	E-761.3	Bushong
FFT1	O-585	Harris	FFT2	E-761.6	Reynolds	ENGB	E-761.4	Komar
HEQB	O-601	Foreman						
STEQ	O-603	Lico	Module	O-477	SW Saguaro NP			

WEST MIMS DEMOBE

5/30/2017

<u>Type</u>	<u>Request #</u>	<u>Name</u>	<u>Type</u>	<u>Request #</u>	<u>Name</u>	<u>Type</u>	<u>Request #</u>	<u>Name</u>
ENGB	E-737.1	Kampf	HEQB	O-646	Tuss	SOF2	O-587	Bertsch
ENGB	E-737.2	Oak	TFLD	O-649	Okon	TFLD	O-593	Rosenow
ENGB	E-737.3	McMullough	MEDL	O-666	Burns	TFLD	O-597	Kidd
ENGB	E--769.1	Reneria	TFLD	O-671	Barberi	HEQB	O-600	Feighter
ENGB	E--769.2	James	ENGB	E-767.1	Lujan	STEN	O-605	Wenzel
FFT2	E-769.3	Chambers	ENGB	E-767.2	Brown	DIVS	O-615	Stover
FFT2	E-769.4	Karle	ENGB	E-771.1	Evans	DIVS	O-616	Rucker
FFT2	E-769.5	Palmer	ENGB	E-771.2	Rowe	DIVS	O-617	Forthofer
FFT2	E-769.6	Abendschein	ENGB	E-771.3	Vernetti	OSC2	O-627	Crain
FFT2	E-714.2	Jaume	FFT2	E-771.4	Freer	HEQB	O-642	Bell II
ENGB	E-714.3	Peters	ENGB	E-773.1	Friess	HEQB	O-644	Neil
ENGB	E-714.4	Vavricka	ENGB	E-773.2	Ottmer	HEQB	O-645	McDuffy
FFT2	E-714.1	McBroom	FFT2	E-773.3	Viola	HEQB	O-646	Tuss
ENGB	E-76.7	Koch	FFT1	E-774.1	Ortiz			
FFT2	E-76.8	Robertson	FFT2	E-774.2	Bacharach	ENG6	E-76	AR-OZF-PH-E641
ENGB	E-76.7	Koch	FFT2	E-774.3	Comden	ENG6	E-651	GFC 4202480
FFT2	E-76.8	Robertson	ENGB	E-796.4	Russell	ENG6	E-663	Cumberland 611
FFT2	E-76.9	Eubanks	DRIV	E-803.1	Clark	ENG6	E-713	AR-OZF-BM-E651
ENOP	E-663.1	Black	MISC	E-857.1	Gutierrez	ENG6	E-737	AR-OUF-PCS-E-692
FFT2	E-663.2	Seaborn	RADO	O-398	Dodson	ENG6	E-763	JEMEZ 631
FFT2	E-663.3	Farris	SEC1	O-406	Payne	ENG6	E-767	NMN2S E2-2
ENGB	E-713.1	Dziekan	DIVS	O-410	Thomas	ENG6	E-769	Brush 143
FFT2	E-713.2	Lewing	OSC2	O-454	Miller	ENG6	E-771	CO-PBS-603
FFT2	E-713.3	Huie	DRIV	O-457	Mundo	ENG6	E-773	STH ARK 112
ENGB	E-763.1	Bolser	SEC1	O-460	Tarver	ENG6	E-36	OK-4261
ENGB	E-763.2	Kecman	COMT	O-507	Towe	ENG6	E-774	Trinidad Fire-ENG 2930
FFT2	E-763.3	Buxman	ATGS	O-561	Mars			
FFT2	E-763.4	Lucero	GISS	O-579	Roberts	HC2IA	C-11	Patrick Environmental
FFT2	E-763.5	Salaz	HEQB	O-644	Neil			
FFT2	E-763.6	Vega	TFLD	O-649	Okon	TDLT (T)	O-671	Barberi
			TFLD	O-615	Stover	STEN	O-658	Allison

GA-OKR-017006
05/29/2017
IAP Map
152,515 ac.
Estimated as of
05/26/2017 0320hr
NAD83



I	Uncontrolled Fire Edge
II	Completed Line
III	Uncontrolled Fire Edge
IV	Completed Line
V	Uncontrolled Fire Edge
VI	Completed Line
VII	Uncontrolled Fire Edge
VIII	Completed Line
IX	Uncontrolled Fire Edge
X	Completed Line
XI	Uncontrolled Fire Edge
XII	Completed Line
XIII	Uncontrolled Fire Edge
XIV	Completed Line
XV	Uncontrolled Fire Edge
XVI	Completed Line
XVII	Uncontrolled Fire Edge
XVIII	Completed Line
XIX	Uncontrolled Fire Edge
XX	Completed Line
XXI	Uncontrolled Fire Edge
XXII	Completed Line
XXIII	Uncontrolled Fire Edge
XXIV	Completed Line
XXV	Uncontrolled Fire Edge
XXVI	Completed Line
XXVII	Uncontrolled Fire Edge
XXVIII	Completed Line
XXIX	Uncontrolled Fire Edge
XXX	Completed Line
XXXI	Uncontrolled Fire Edge
XXXII	Completed Line
XXXIII	Uncontrolled Fire Edge
XXXIV	Completed Line
XXXV	Uncontrolled Fire Edge
XXXVI	Completed Line
XXXVII	Uncontrolled Fire Edge
XXXVIII	Completed Line
XXXIX	Uncontrolled Fire Edge
XL	Completed Line
XL I	Uncontrolled Fire Edge
XL II	Completed Line
XL III	Uncontrolled Fire Edge
XL IV	Completed Line
XL V	Uncontrolled Fire Edge
XL VI	Completed Line
XL VII	Uncontrolled Fire Edge
XL VIII	Completed Line
XL IX	Uncontrolled Fire Edge
XL X	Completed Line
XL XI	Uncontrolled Fire Edge
XL XII	Completed Line
XL XIII	Uncontrolled Fire Edge
XL XIV	Completed Line
XL XV	Uncontrolled Fire Edge
XL XVI	Completed Line
XL XVII	Uncontrolled Fire Edge
XL XVIII	Completed Line
XL XIX	Uncontrolled Fire Edge
XL XX	Completed Line
XL XXI	Uncontrolled Fire Edge
XL XXII	Completed Line
XL XXIII	Uncontrolled Fire Edge
XL XXIV	Completed Line
XL XXV	Uncontrolled Fire Edge
XL XXVI	Completed Line
XL XXVII	Uncontrolled Fire Edge
XL XXVIII	Completed Line
XL XXIX	Uncontrolled Fire Edge
XL XXX	Completed Line
XL XXX I	Uncontrolled Fire Edge
XL XXX II	Completed Line
XL XXX III	Uncontrolled Fire Edge
XL XXX IV	Completed Line
XL XXX V	Uncontrolled Fire Edge
XL XXX VI	Completed Line
XL XXX VII	Uncontrolled Fire Edge
XL XXX VIII	Completed Line
XL XXX IX	Uncontrolled Fire Edge
XL XXX X	Completed Line
XL XXX XI	Uncontrolled Fire Edge
XL XXX XII	Completed Line
XL XXX XIII	Uncontrolled Fire Edge
XL XXX XIV	Completed Line
XL XXX XV	Uncontrolled Fire Edge
XL XXX XVI	Completed Line
XL XXX XVII	Uncontrolled Fire Edge
XL XXX XVIII	Completed Line
XL XXX XIX	Uncontrolled Fire Edge
XL XXX XX	Completed Line
XL XXX XXI	Uncontrolled Fire Edge
XL XXX XXII	Completed Line
XL XXX XXIII	Uncontrolled Fire Edge
XL XXX XXIV	Completed Line
XL XXX XXV	Uncontrolled Fire Edge
XL XXX XXVI	Completed Line
XL XXX XXVII	Uncontrolled Fire Edge
XL XXX XXVIII	Completed Line
XL XXX XXIX	Uncontrolled Fire Edge
XL XXX XXX	Completed Line



This Page Intentionally left blank.

MEDICAL PLAN (ICS 206 WF)

Medical Incident Report

FOR ALL MEDICAL EMERGENCIES: IDENTIFY ON SCENE INCIDENT COMMANDER BY NAME AND POSITION AND ANNOUNCE "MEDICAL EMERGENCY" TO INITIATE RESPONSE FROM IMT COMMUNICATIONS/DISPATCH.

Use items one through nine to communicate situation to communications/dispatch.

1. CONTACT COMMUNICATIONS/DISPATCH

Ex: "Communications, Div. Alpha. Stand-by for Priority Medical Incident Report." (If life threatening request designated frequency be cleared for emergency traffic.)

2. INCIDENT STATUS: Provide incident summary and command structure.

Nature of Injury/Illness		Describe the injury (Ex: Broken leg with bleeding)
Incident Name		Geographic Name + "Medical" (Ex: Trout Meadow Medical)
Incident Commander		Name of IC
Patient Care		Name of Care Provider (Ex: EMT Smith)

3. INITIAL PATIENT ASSESSMENT: Complete this section for each patient. This is only a brief, initial assessment. Provide additional patient info after completing this 9 Line Report.

Number of Patients:	Male / Female	Age:	Weight:
Conscious? <input type="checkbox"/> YES <input type="checkbox"/> NO = MEDEVAC!			
Breathing? <input type="checkbox"/> YES <input type="checkbox"/> NO = MEDEVAC!			
Mechanism of Injury: <i>What caused the injury?</i>			
Lat/Long (Datum WGS84) <i>Ex: N 40° 42.45' x W 123° 03.24'</i>			

4. SEVERITY OF EMERGENCY, TRANSPORT PRIORITY

SEVERITY	TRANSPORT PRIORITY
<input type="checkbox"/> URGENT-RED Life threatening injury or illness. <i>Ex: Unconscious, difficulty breathing, bleeding severely, 2° – 3° burns more than 4 palm sizes, heat stroke, disoriented.</i>	Ambulance or MEDEVAC helicopter. Evacuation need is IMMEDIATE.
<input type="checkbox"/> PRIORITY-YELLOW Serious injury or illness. <i>Ex: Significant trauma, not able to walk, 2° – 3° burns not more than 1-2 palm sizes.</i>	Ambulance or consider air transport if at remote location. Evacuation may be DELAYED.
<input type="checkbox"/> ROUTINE-GREEN Not a life threatening injury or illness. <i>Ex: Sprains, strains, minor heat-related illness.</i>	Non-Emergency. Evacuation considered Routine of Convenience.

5. TRANSPORT PLAN:

Air Transport: (Agency Aircraft Preferred)

<input type="checkbox"/> Helispot	<input type="checkbox"/> Short-haul/Hoist	<input type="checkbox"/> Life Flight	<input type="checkbox"/> Other
Ground Transport:			
<input type="checkbox"/> Self-Extract	<input type="checkbox"/> Carry-Out	<input type="checkbox"/> Ambulance	<input type="checkbox"/> Other

6. ADDITIONAL RESOURCE/EQUIPMENT NEEDS:

<input type="checkbox"/> Paramedic/EMT(s)	<input type="checkbox"/> Crew(s)	<input type="checkbox"/> SKED/Backboard/C-Collar
<input type="checkbox"/> Burn Sheet(s)	<input type="checkbox"/> Oxygen	<input type="checkbox"/> Trauma Bag
<input type="checkbox"/> Medication(s)	<input type="checkbox"/> IV/Fluid(s)	<input type="checkbox"/> Cardiac Monitor/AED
<input type="checkbox"/> Other (i.e. splints, rope rescue, wheeled litter)		

7. COMMUNICATIONS:

Function	Channel Name/Number	Receive (Rx)	Tone/NAC *	Transmit (Tx)	Tone/NAC *
<i>Ex: Command</i>	<i>Forest Rpt, Ch. 2</i>	<i>168.3250</i>	<i>110.9</i>	<i>171.4325</i>	<i>110.9</i>
COMMAND					
AIR-TO-GRND					
TACTICAL					

*(NAC for digital radio system)

8. EVACUATION LOCATION:

Lat/Long (Datum WGS84) <i>EX: N 40 42.45' x W 123 03.24'</i>	
Patient's ETA to Evacuation Location:	
Helispot/Extraction Size and Hazards:	

9. CONTINGENCY:

Considerations: <i>If primary options fail, what actions can be implemented in conjunction with primary evacuation method? Be thinking ahead...</i>	REMEMBER: Confirm ETA's of resources ordered Act according to your level of training Be Alert. Keep Calm. Think Clearly. Act Decisively.
--	--